

# MICKLEHAM PARISH Magazine


A community magazine for Mickleham and Westhumble



July - August 2018



  
**P.F. WINDIBANK**  
 FINE ART AUCTIONEERS & VALUERS  
 Buying and Selling Jewellery Silver Antiques and Collectables



*We offer comprehensive Probate and Insurance Valuations*

P F Windibank Auctioneers  
 The Dorking Halls Reigate Road Dorking Surrey RH4 1SG  
 01306 884556 sjw@windibank.co.uk www.windibank.co.uk

  
**Bullimores**  
 Chartered Accountants

**The Safe Pair of hands**  
 Tax • Accounts • Probate  
 Inheritance Tax & Executorship

For advice, please call us on: **01306 880880**  
 or email: [partners@bullimores.co.uk](mailto:partners@bullimores.co.uk)  
[www.bullimores.co.uk](http://www.bullimores.co.uk)

Bullimores LLP licenced to carry out the reserved legal activity of non-contentious probate in England and Wales by the ICAEW

  
**Stepping Stones**  
 Country Pub and Dining

**Food Served All Day – Free Wi-Fi**  
 Walkers – Muddy Boots – Cyclists – Families and dogs  
 All welcome

*Lovely function room available for meetings family and business events*

Near Box Hill and Westhumble Station  
 01306 889932 [www.steppingstonesdorking.com](http://www.steppingstonesdorking.com)  
[steppingstonespub@gmail.com](mailto:steppingstonespub@gmail.com)

**STEAK NIGHT EVERY TUESDAY**  
**TWO COURSE MEAL**  
**GLASS OF WINE**  
**£19**



**Please see website for special events**

*Sherlock Funeral Service*

*Sherlock Funeral Service is an Independent family owned business, established over 100 years*

- Private Service Chapel & Rest Rooms
- Home visits arranged if required
- Pre-Paid Funeral Plans available
- Free Parking

**Telephone: 01306 882266**  
 Trellis House, 190 South Street, Dorking RH4 2ES.  
 Email: [office@sherlockandsons.co.uk](mailto:office@sherlockandsons.co.uk)




**Funeral Directors & Monumental Masons**

# Mickleham Parish Magazine

July/August

## Mickleham Parish Magazine

A community magazine for Mickleham and Westhumble published under the auspices of Mickleham PCC with an independent editorial panel.

The magazine is published at the beginning of each month except January and August.

**COPY DEADLINE**  
 FOR THE  
**SEPTEMBER 2018**  
**MAGAZINE**  
 Sunday  
 12th August

send to:

Sue Tatham  
 St Anthony Pilgrim's Way  
 Westhumble  
 Dorking RH5 6AW  
 01306 882547

[editor@micklehammag.co.uk](mailto:editor@micklehammag.co.uk)

Contributions in any form are welcome as are good quality photographs. There is no charge for advertising local charity and community events. However the editors reserve the right to shorten omit or reformat articles submitted for publication depending on space.



Printed by Bishops Printers  
 Portsmouth

The Rectory, Mickleham

Dear friends

We live in a world that is often dominated by bad news and yet while the population of our troubled world increases at a staggering rate each year, it is fascinating to realise that the growth of Christianity also increases at a staggering rate too! In Africa alone for example about 50,000 Christians are being baptised every week as Christianity is and remains, the most popular religion in the world today with well over two billion Christians worldwide.

There is something about the appeal of the gospel message of Jesus Christ that despite every criticism and attempt to discredit it over the last 2,000 years, approximately one third of the people alive today find great relevance and hope in it, with many willing to suffer great hardships for their faith. Despite significant decline in the West, Christianity is still very much alive, dynamic, growing at an incredible rate and highly relevant to our damaged world today.

And one way that we can begin to grasp a little of how relevant that is to us personally is by looking at God's handbook, that manual for life, the Bible.

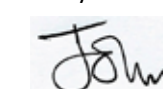
The Bible has been described as the single most important book ever written in the history of the world. It is an eyewitness account of historical events of such magnitude that they have literally shaped the world in which we live. Without this book the Western world and a good deal of the Eastern world would be completely different today than if the events of this book had never occurred. The Bible is foundational to just about everything humanity will ever know or accomplish, and has led directly to massive undertakings of good will and charity across the planet as individual lives have been transformed by God's revelation of Himself.

In a world which can at times seem to have lost its way a bit, millions of people have turned to God's Holy Bible and found in the person of Jesus a dynamic that is real and relevant to them, with good gifts that God has made freely available to every single one of us. Despite the bad news that often bombards us each day there is so much potential for good in every single person, and each of us has the freedom of choice of how to react to the challenges of our daily lives.

I heard once of a man who bought a new car and owned it for two years before it broke down. The mechanic at the garage who fixed it showed the owner the car manual which the man had never opened or read. When he did he found some amazing things that the car could do and for two years he had never even known about them - what a waste! The man now reads his manual carefully so as he puts it 'I can enjoy all the good gifts the manufacturer gave me when I purchased the car!'

May I encourage you this summer to see if you find a Bible translation you like, online or in a Christian Bookshop or library, and dip in! I pray you too will enjoy the many blessings Almighty God wants to pour out on your life. Have a lovely summer..

Every blessing



Reverend Canon John Harkin  
 Parish Priest





## Congratulations to Sue Tatham B.E.M.

It would seem that Queen's Honours are like buses in the Tatham household – with 2 arriving in quick succession. Within days of Ben picking up his 'gong' at Buckingham Palace we heard the marvellous news that Sue had been awarded the British Empire Medal for services to the community in Mickleham. The B.E.M. was reintroduced in 2011 to recognize the dedication and hard work that people devote to their communities – although maybe in Sue's case the citation should read 'For the outstanding dedication and ridiculous amount of hard work over many decades'.

It was in 1984 that Sue, despite having a full time career teaching nursing at the Nightingale School at St Thomas's Hospital in London, suggested replacing the Parish Magazine, which at that time amounted to little more than a brief newsletter, with a publication of

at least 24 pages produced monthly. Since then it has achieved a unique role in uniting all corners of the community both religious and secular. As well as containing informative articles, local events are publicised and reported on which generates a level of community involvement that would otherwise not happen. It really is the glue that connects us all together. In the 34 years of its existence more than 250 local people have been involved, in one way or another, ably guided by Sue. The magazine started before desktop publishing was available to home users; Sue and her then team typed up all the material and organised copying and printing before the days of cheap and easy photocopying. Not one to rest on her laurels, Sue has worked tirelessly to develop the colourful informative magazine that we have today. Her natural flair and an excellent eye for detail result in a very attractive magazine.

Despite the enormous demands of editing the magazine Sue has still found time to be involved in many other community activities, including being a Trustee of Mickleham Village Hall for 25 years and Chairman of its Management Committee for 10 years. During her time she led the planning and fundraising of £250,000 for the refurbishment of the Village Hall. This, as well as attracting many new users,

resulted in the creation of a delightful dedicated space for the nursery school which provides an outstanding start to the education of local children as well as a hub for their parents.

And there is more... using the publishing skills she has acquired as editor of the Parish Magazine, Sue has edited and desktop published 8 booklets for the Friends of Box Hill on the natural history of Box Hill as well as producing many of the posters, tickets and programmes for the Mickleham Choral Society of which she is an active member. She was also Chairman of Dorking NADFAS (now The Arts Society Dorking) for three years and co-founded the local history group of which she is currently secretary. She has organised the series of Heartstart CPR training sessions held in the Westhumble Chapel of Ease to educate and raise awareness of the treatment of medical emergencies.

There is no doubt we have an enormous amount to thank Sue for and offer our hearty congratulations on her award. When I wrote an article in the February edition of this magazine about Ben's award of an M.B.E. he accused me of writing his obituary – hopefully Sue will not think the same about this piece! We look forward to many more years with Sue at the heart of our community.

Roger Davis

## Congratulations to Rev David Ireland, B.E.M.

As many will by now know, our very own ex-parish priest has been awarded the British Empire Medal in the Queen's birthday honours list for services to the community in Mickleham. A richly deserved acknowledgement, both of his 8 years as our parish priest, but also his extensive charity work.

Apart from numerous residents of the Parish, past and present, his proposal was supported by the Royal School for the Blind SeeAbility, for whom as fundraiser, he raised over £20 million. While he was the main contact point with Patrons Diana, Princess of Wales and latterly HRH Duchess of Gloucester, he was also described as one of the team, involved fully with staff and patients, small and big sponsors alike. SeeAbility particularly praised his efforts in signing up about half of the lieutenants of southern England as patrons, thus vastly widening the charity's reach. One example given was his single-handed fundraising to establish Heather House, Tadley, which remains a Centre of Excellence for treatment of those with Batten's Disease.

Before that, fundraising at Trinity Hospice for 6 years, Lord Sainsbury noted that he became 'very much part of the community' and always had time for the individual, whatever level or role. For the Hospice, he managed to organise a service at Westminster Abbey with the Queen Mother in attendance, and a special BBC 'Songs of Praise' from the Hospice Chapel.

Subsequent, but no less important fund raising and support has been given with his usual vigour to 'Pitstop'/'Meeting Room' in Leatherhead, who mentioned

his 'tireless' efforts, and Leatherhead Start who noted that his work has 'benefitted many homeless people in a way that resonates daily'.

Apart from his role as Chaplain and Independent Listener at Box Hill School, described as 'all embracing' by former Head and several staff, David continues to act as Independent Listener to the Royal Ballet School, now for over 20 years: the Principal wrote 'all such schools have to have such Independent Listeners, but in my experience, not many listen. David does lots!'

A common theme was his contribution 'above and beyond the call of duty'. I am sure we parishioners would agree. Just in a Priest-for-Duty role, he seemed to be around and available all of the time. If you missed him in the shop, he would get you in the pub. I hid behind a hedge once but that is another story. He initiated or reinstated the Village Fête, music in the Church and throughout the wider community, the Youth group, a local kids football team, oversaw various major projects at the Church, largely through his inspiration and will, and other things too numerous to mention. His roles at all our schools has, both on a personal and wider level, been immense, though his participation in the St Michaels Sport's Day sprints (he should give the medal back, in my opinion) and the Nursery school as Father Christmas are probably best lost in the ravages of time. Then there was the day he turned up to 'The Sound of Music: Sing a Long', in a foot of snow, wearing no socks. I digress...

There were many, many personal letters of thanks/support from local residents which I know have pulled heartstrings.



David clearing weeds outside the churchyard

Common themes included his kindness; willingness to listen, particularly at times of personal difficulty, sadness or even happiness; his flexibility; his drive to get things done; his incredible memory for names and past situations; his inspiring and infectious enthusiasm, huge contributions to all he has committed to; his appeal to both churchgoers and 'heathens' alike (my words!), his substantial success in eradicating the separating effect of the A24 on the parish, and his quite extraordinary ability to be visible in the parish at all times. I suspect there is a twin.

In short, he has seemed to invest his whole self into everything he has been asked to do. He has not yet wound the village clock, which is disappointing (though, there is still time!) otherwise he would have been a Dame!

It is a mark of the man that he has been deeply embarrassed reading his supportive letters.

Thank you, David.

Mark Day



### JOIN US FOR BREAKFAST

THE RUNNING HORSES

9 – 10 A.M.

Please book by the Tuesday before

### MEN'S BREAKFASTS

THIRD SATURDAYS

21ST JULY

18TH AUGUST

Book with: Andy Diamond  
diamo1@hotmail.co.uk

### WOMEN'S BREAKFASTS

FOURTH SATURDAYS

28TH JULY

NO BREAKFAST IN AUGUST

Book with: Stephanie Randall  
0773 6933 482  
srandall55@gmail.com

**Tea @3**

Monday 23rd July Host: Alison Wood

Abbots Cottage, London Road, Mickleham.

There is no tea in August

ALL WELCOME TRANSPORT AVAILABLE

## Alternative Meanings

Those of us who listen to I'm Sorry I Haven't a Clue on Radio 4 will be familiar with Uxbridge English Dictionary, the round where panel members provide new definitions for old words. The Washington Post has a yearly contest on similar lines and has published the winning submissions for this year's contest, in which readers are asked to supply alternate meanings for common words.

Some of the winners:

1. flabbergasted, adj. appalled by discovering how much weight one has gained.
2. abdicate, v. to give up all hope of ever having a flat stomach.
3. negligent, adj. absentmindedly answering the door when wearing only a nightgown.
4. lymph, v. to walk with a lisp.

5. gargoyle, n. olive-flavoured mouthwash.

6. flatulence, n. emergency vehicle that picks up someone who has been run over by a steamroller.

7. balderdash, n. a rapidly receding hairline.

Readers of this magazine may be able to supply their own (polite) suggestions for future publication.



Superb professional  
cleaning of carpets  
oriental rugs  
upholstery curtains  
and leather  
Guardsman  
anti-stain protection

- spot stain and odour removal
- leather cleaning specialists
- flame retarding
- dust mite reduction service
- all work fully insured & guaranteed

For a free no obligation quotation call today  
Freephone 0808 144 9071  
John Joannides 28 Bracken Close Bookham

**Safeclean**  
*The furnishing care specialists from GUARDSMAN*



*Pinehurst  
Rest Home*

*We aim to provide an excellent service at  
competitive rates supporting emotional physical  
and social needs of our clients always respecting  
and protecting their status as adults.*

- Residential and 24-hour daycare
- Excellent cuisine
- Facilities for disabled: medic bath / lift
- Home doctor in attendance
- Single & sharing rooms
- Convalescent & short stays
- Lounge with TV & piano
- Separate dining room
- Physiotherapist chiropodist & hairdresser
- Entertainment: theatre visits / parties  
& cabarets held on premises

**National Trust Road Box Hill  
Mickleham Dorking Surrey RH5 6BY**  
Telephone: 01306 889942 / 888253

*Dorking Decorators*  
PROFESSIONAL PAINTERS & DECORATORS

**40 Years Experience**  
All aspects of painting and decorating

**01306 640418**

[www.dorkingdecorators.co.uk](http://www.dorkingdecorators.co.uk)

Approved by Trading Standards & Checkatrade



**CHRIS HULME**

*Garden Machinery*

*Service and repair of all makes and models of:*

- Ride-on mowers • Rotary mowers • Cylinder mowers
- Chainsaws • Strimmers • Hedge cutters
- Rotavators • Blower vacs

*Quality secondhand machinery*

*Collection and delivery service*

*The Barn Cowslip Lane Mickleham 01372 377757 / 07950 961606*

• Quality Flowers • Personal Service • Customer Satisfaction •

**FLOWERS by ELAINE**

- Wedding Specialists •
- Qualified Florists • Fresh Flowers & Plants • Local Delivery •
- Varied Gift Selection • Corporate Functions • Special Occasions •
- Funeral Tribute Specialists • Interflora Worldwide •

66 High Street, Dorking, Surrey RH4 1AY  
T: 01306 883511 • E: fbe@btconnect.com  
[www.flowersbyelaine.co.uk](http://www.flowersbyelaine.co.uk)



**SIMON HOOPER** For all  
your decorating needs...

Professional friendly and speedy service at all times

- |                          |                             |
|--------------------------|-----------------------------|
| Fully insured            | Insurance work              |
| Exterior painting        | Interior decorating         |
| Free quotes & advice     | Oil & Water-based products  |
| Commercial/Domestic work | Wallpaper hanging & removal |

07947 135 376 0208 3978 962  
[www.slhdecoratingservices.com](http://www.slhdecoratingservices.com)

## The Jekyll Garden at the Manor House, Upton Grey

My sister, Pat, who lives in Oregon visited us recently. As she is a Master Gardener\*, it was not difficult to guess what she wanted to see. In addition to visits to Kew, Wisley, Nymans, Polesden Lacey, Iford Manor and Borde Hill, Pat wanted to see Munstead Wood which had been Gertrude Jekyll's home. Unfortunately, the garden at Munstead Wood was fully booked, but thanks to Mr Google we found a garden reckoned to be 'The most authentic Gertrude Jekyll restoration' at The Manor House at Upton Grey, Hampshire. We were not disappointed. The garden was magnificent with gorgeous borders crammed with a wide range of flowers in swathes of colour in a perfect setting. The yew at the top of the drive is believed to be ore than 2,000 years old, probably planted as a 'waymarker tree' on the nearby Roman road running from Silchester (near Reading) to Chichester. Both the nearby church and a house on the site of the Manor House were listed in the Domesday book. The present-day Manor House, which is



*The bowling lawn border*

not open to the public, has roof truss timbers dating from 1440 and one of its rooms was used by Oliver Cromwell to try Royalists. In 1908 the building was extensively altered and extended for the then owner, Charles Holme, a prominent Arts and Crafts figure, and Gertrude Jekyll, at the height of her gardening career, was engaged to design the garden.

Unfortunately by 1984 the Manor House was almost derelict and the garden sadly neglected when the present owners moved in. That same year they obtained copies of the 19 original plans from the Jekyll Collection, now held at the University of California, and set about restoring the garden.

The guidebook describes how they set about the restoration and found the plants to fill the beds. It also includes a copy of Jekyll's 1908 plan for '4.75 Acres on Chalk' and an extensive plant list.

See [www.gertrudejekyllgarden.co.uk](http://www.gertrudejekyllgarden.co.uk) for information about visiting times etc or telephone 01256 862827.

Sue Tatham

\*The Master Gardener program, typically offered through universities in the United States and Canada, provides intensive horticultural training to individuals who then volunteer as Master Gardeners in their communities by giving lectures, creating gardens, conducting research, and many other projects.



*Can you translate this diagram  
into words? Say what you see.*

**FUNNY FUNNY  
WORD WORD  
WORD WORD**

*Answer on page 26*

## Can you help to identify these leaves?

**F**ound by Annie and Will Dennis near the Mole between Mickleham and Westhumble. Can anyone explain these white leaves growing from an otherwise normal sycamore tree.

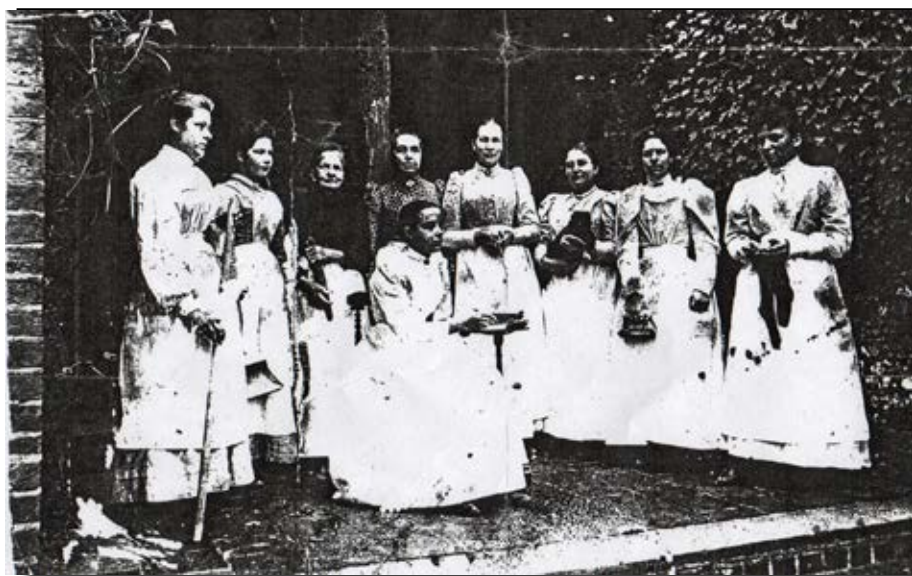




## The Laundry At Flint Cottage

There are three Flint Cottages in Mickleham but I think the earliest is situated high up on the London Road (A24), some distance from the Old School House. In 1841, James and Elizabeth Andrews (aged 20 and 25 respectively) from Headley arrived with their 1 year-old son. The family settled in Mickleham and had a total of 9 children. James is described as a carter or carman and we know he was respected in the village as he was voted on to the Parish Council. He died sometime in the 1860s and by 1871 Elizabeth is described as the head of the household with 3 sons working, one as a labourer and two as farm boys, two children at school and the youngest at home.

My information about the family and the laundry comes from Mrs Dorothea Puttock, born Zillah Dorothy Twort in 1896/7. As a young girl she used to visit her Uncle Jim (son of James) who was head of the family in 1881 and her Aunt Ann who at this time was running a flourishing laundry business, most likely for the Gordon Clark family at Mickleham Hall. About 6 or 7 girls were employed, 'mostly from the Home in Dorking'. Dorothea in her old age was an inveterate letter writer from her nursing home in Reigate and her letters make fascinating reading about her childhood in Dorking and visits to



Mickleham where a rabbit was always a present to take home.

Dorothea tells us how the cottage was organised. 'In the house was the washing room, all tubs and things; upstairs the ironing room, the stove in the centre and all the irons were around it.' Another letter describes how the house was fitted up as a laundry for the big mansion. 'First a room full of tubs for washing and coppers going to boil clothes and the long dolly sticks. I'd see them all but was not allowed to stay in there as it was all steam. We sat in the front room where the piano and organ was.' 'Myself I loved to go into the ironing room upstairs. Everything was scrubbed snow white, a big stove in the centre of the room and all the irons were around it as the stove was so hot all day. Long tables to iron on and the girls would talk to me as they ironed great long table cloths and then to goffer\* the lace with special tools

and to damp the starched things. Well I never seen anyone work so hard as those girls did'. Hard to imagine those conditions today.

The third generation, Eleanor (Nelly) died aged 76 in 1948 after playing a significant role in the life of the village. She was still at Flint Cottage in 1938. Her sister Kate died in 1944 in Thorn Cottage aged 71. Both married but Kate's husband was killed in 1941 on the London Road and Nelly's husband was a rogue who married her for her money. There is much more to tell about the Andrews family and I shall write more in future. The photograph shows the girls holding the tools of their trade, apart from the third on the right who holds a kitten!

Judy Kinloch

*Goffer - make wavy, flute or crimp (a lace edge, a trimming etc) with heated irons.*



If you are having work done on your house it could be an ideal opportunity to consider fitting a box or two.

If you would like to know more you can find full information at [www.swift-conservation.org](http://www.swift-conservation.org) or get in touch with me at [chardaruwalla@tiscali.co.uk](mailto:chardaruwalla@tiscali.co.uk).

Charlotte Daruwalla

## Party Time is Nearly Here

### WOT – Sweat Shops in Mickleham?

Reports have reached the Chairman of the Parish Council that sweat shops are in existence and need to be addressed. It was discovered that members of the organising committee for the Village Party on 21st July had set to converting metres of hessian into bespoke bunting, reflecting the 40s theme of the party.

The Parish Council has given its approval to this particular sweat shop on the grounds that it will be generating funds for a number of local charities.

A definite case of 'Rags to Riches'!

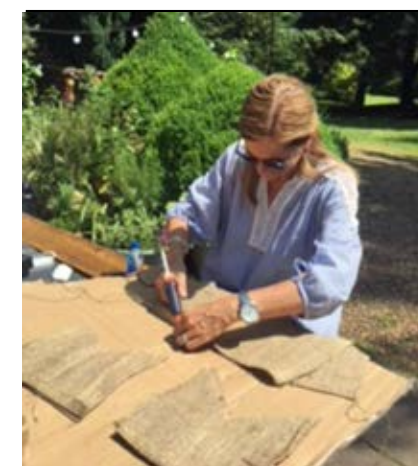


CELEBRATING THE  
**HALCYON DAYS**  
AT JUNIPER HALL  
MICKLEHAM

You are cordially invited to the  
**2018 MICKLEHAM VILLAGE  
SUMMER PARTY  
AT JUNIPER HALL  
SATURDAY 21ST JULY**  
7.00 PM - 12.30 AM

<b>£40 PER TICKET</b> Including: Welcome Cocktail Canapés 2-Course Dinner	<b>ENTERTAINMENT</b> Including: Pre-dinner Music & Swing Band Absolutely Vintage Raffle & Auction	<b>DRESS CODE</b> 1940's Post-War Celebration (optional)
---	--	--

RSVP and apply for tickets to Martine Brewer at:  
[mmhge.brewer@btinternet.com](mailto:mmhge.brewer@btinternet.com) or call her on 07890 322 254



The AGM for Mickleham Village Shop Limited will be held in St Michael's Church on Thursday 27th September at 5.30 p.m.





- Bespoke dress making
- Soft furnishings
- Clothing alterations
- Curtains
- Sewing lessons
- Roman Blinds

Contact Tracey: 07511 079441  
traceyssewingroom@gmail.com

**TreeLine** Services Ltd.  
**YOUR LOCAL PROFESSIONAL  
TREE HEALTH CARE SPECIALISTS**

Felling, Pruning, Stump Removal, Planting, Logs,  
Woodchip, Air Spade Services, Consultancy

Call us on **01306 741800**  
office@treeline.co.uk • www.treeline.co.uk

## We Clean Ovens ...so you don't have to!

Call us today to have your cooking appliances  
sparkling, using our own eco friendly products.



- **Range & Aga Specialists**
- Ovens & Hobs
- Extractor Hoods
- Microwave Ovens
- Traditional Stoves



Call TODAY for **01306 302021**  
LOCAL Service ovenudorking.co.uk

## EDE BROS

REMOVALS • STORAGE • SHIPPING •

- Since 1926, Capel-based and family owned
- STRESS-FREE, local, national & worldwide
- Contact us for your **FREE** estimate...

**01306 711293**  
edebros.co.uk



Gill and Paula would like to warmly welcome you to Aspen Care offering assistance to enable you to live in the comfort of your own home with care and companionship.

- A happy alternative to a care home
- Cover while your family or carer takes a holiday
- Recuperation and rehabilitation following a hospital stay
- All aspects of personal care medication and meal prep
- Dementia care disability chronic & critical conditions end of life care
- Accompaniment to appointments

Call for a chat to discuss your requirements.

We look forward to hearing from you.

01737 354821 info@aspensliveincare.co.uk www.aspensliveincare.co.uk

## ALFA CHIMNEY SWEEPS

- Clean prompt work
- 30 years' experience
- Specialist advice for old/problem chimneys
- Weekday and weekend service
- Fully insured

**01306 883455**



## YOUR LOCAL FARM SHOP ON DENBIES WINE ESTATE

farm shop deli plant centre

FREE PARKING www.vgfarmshop.com 01306 880720

Open 7 days 9.30 a.m. to 5.30 p.m.

- Fresh fruit & veg – local & home grown
- Great range of local cheese
- Fresh bread cakes croissants & pastries
- Cook ready meals; Bangers Galore sausages

LOCAL \* NATURAL \* ETHICAL

Food Fair  
Sunday 15th July 12 to 4 p.m.  
Local Strawberries  
Local gin

## Mickleham and Westhumble Horticultural Society

### Looking Forward – Village Show, Saturday, 1<sup>st</sup> September

Members will already have received the schedules outlining the classes and subjects for this year's show which does give you a chance to have a quick look through and decide what you might enter, given all sorts of circumstances such as the weather, eaten by slugs! If when the time comes, you cannot find your schedule, just look on-line for all the details. Remember, entries are what make the Show.

You will see what the titles are for the photography classes and the dates for the garden judging (below) but it could

be worth having a trial run to perfect your Farmhouse Fruit Cake or Tarte Tatin, both of which are certain to be appreciated by family and friends in advance of the day. We have introduced an innovation into the informal flower arrangement entitled 'Anything Goes' in which weeds\* are welcome, which also features in the children's section.

We very much hope that parents, grandparents, aunts and uncles – anyone who has a child in his or her life – will encourage them to get creative over the holidays and astonish the judges

with their talents! Remember young people are not limited to Section H but are free to enter any class.

As well as old favourites, we have some new stalls this year so do come to have a look, and enjoy tea and home-made cakes courtesy of the Community Nursery, quite apart from taking in the amazing display of flowers and produce in the village hall.

Judy Kinloch

\*Traditional wisdom tells us that a weed is just a plant in the wrong place, so absolutely anything goes!

## Mickleham and Westhumble Horticultural Society

# Summer Show

Saturday 1st September at 2.30 p.m.

Mickleham Village Hall, Dell Close

An amazing display of locally grown flowers, fruit & veg  
and very impressive produce

Stalls this year: owls, bees, Norbury cheese, local potter, botanical artist, items for sale, Dr. Barnardo cards, Garden Shed.

Delicious teas - Plant stalls *contributions of plants very welcome*

Plenty of children's classes both through St Michael's and the Nursery but also individual entries welcomed

### Garden Judging for the Summer Show

This year the The Paynter Cup will be awarded for 'An attractive and productive vegetable plot'.

The Aitken Cup will be awarded for 'A Late Summer Border'.

Judging will take place on the morning of Friday, 24th August. (Owners need not be present if access is available).

Feedback from the judges will be available.

Entries by 8 p.m. on 21st August, please, to Judith Long on 07904 160961 or judith.long2@btinternet.com

The judges are very friendly and enjoy looking round our gardens, large or small. Perfection is not expected!

Schedules have been delivered and are also be on our website at <http://www.surreycommunity.info/mwhs/>



Photography class titles:

'A moment to remember', 'A Waterscape',  
'Animal Magic', 'Down the Lane'.

Floral arrangements:

'Berried Treasure', 'Anything Goes' (informal, can include weeds!).

Keep your eyes open for original subjects.

## Mickleham and Westhumble Badminton Club

This club is now officially formed and the first club night was on 9<sup>th</sup> May in the splendid new Sports Centre at Box Hill School. All four courts are being used between 18.00 - 20.00 on Wednesday evenings until the beginning of July

when the hours will be reviewed. The club currently has 40 signed-up members. Should you be interested in learning more, please contact the Membership Secretary, Sarah Blake, on [sarah.blake1@uk.nestle.com](mailto:sarah.blake1@uk.nestle.com)





## Visit to Abinger



Left: Goddards courtyard; right: St John's, Abinger

On a warm, sunny morning in June, our group assembled outside St James's Church in Abinger. Inside, we were welcomed by Tony Berry, the Rector, and Peter Borrowdale, one of the churchwardens. The interior has a very light and airy feel and much of it is modern, for reasons that became clear when Tony gave us an overview of the history. A church in Abinger is recorded in the Domesday Book and it is thought there may have been a Saxon church on the site before the Norman Conquest. The oldest part of the current church is a 12<sup>th</sup> century wall opposite the entrance. Like St Michael's in Mickleham, St James's underwent extensive alterations and restorations, particularly in the 19<sup>th</sup> century. Unfortunately, the church suffered catastrophic damage on two separate occasions in the 20<sup>th</sup> century. In 1944 a flying bomb exploded nearby and brought down the roof of the nave, the belfry and part of the walls, leaving only the 13<sup>th</sup> century chapel intact. The organ and most of the furnishings were also destroyed. In 1964, only thirteen years after the church had been painstakingly restored, lightning struck the tower and the ensuing fire caused significant damage. Further restoration took place and modern stained glass was installed in the east window in an eye-catching contemporary design. More recently, the cedar shingles on the church spire have been replaced with oak because woodpeckers were causing extensive damage to the softer wood.

In the churchyard we looked at the war memorial, designed by Edwin Lutyens and particularly interesting because it includes the name of a woman, Grace King, "Dames des Cantines Anglaises". These "Cantines Anglaises" in France were organised by the Women's Emergency Corps during WW1 to provide allied troops with meals, accommodation, cigarettes and washing facilities. Grace King died in Paris in 1917 and was awarded the Medaille des Epidemies by France and the British War Medal. She was the daughter of an Abinger builder and is buried in the churchyard with several family members.

Following a pleasant lunch in the garden of the Abinger Hatch, conveniently situated directly across the road from the church, we continued down Abinger Lane to Goddards where our guide was waiting. We learned that Goddards was built by Edwin Lutyens between 1898 and 1900 for Frederick Mirrielees, a wealthy businessman who lived in a house nearby called Pasture Wood, where Gertrude Jekyll was making a rock garden for him. He wanted Lutyens to build a holiday home for 'ladies of small means', consisting of a Common Room with a cottage at each end, on a plot of land he had acquired called Goddards. The house had no bathrooms and was intended for summer use only. In 1910, Lutyens extended the house and modernised the facilities because Mirrielees was expecting his son and daughter-in-law to move in, although

it appears this never happened. The 'ladies of small means' were moved to a converted barn at Pasture Wood. Mirrielees died in 1914 and his widow leased the property to Arthur Gibbs who bought it after she died. Arthur Gibbs was a keen local historian and a churchwarden at St James's Church. He wrote a series of papers on the history of the church which have been transcribed and can be found on the church website. Both he and his wife are also buried in the churchyard. After his death, the Hall family bought Goddards in 1953. They were in the building trade and had re-roofed Buckingham Palace. In 1991 they gave Goddards to the Lutyens Trust in memory of their son Lee. To keep Goddards properly maintained it is now leased to the Landmark Trust and used for holiday lets.

Our visit was well-timed. The house was unoccupied and we were able to see the first-floor rooms, normally off-limits to tour parties, as well as the ground floor. Approaching the house from the rear we admired the courtyard garden planted by Gertrude Jekyll and surrounded on three sides by the house. At the time the house was built Gertrude Jekyll was writing *Old West Surrey*, which describes the rural way of life rapidly disappearing at the beginning of the 20<sup>th</sup> century. The influence of Jekyll and her book are apparent throughout the house, from

the combination of Horsham stone and clay tiles on the roof to the hole in one of the gables made for an owl.

Inside the house, the Common Room, which now functions as a dining room, was particularly impressive with a fireplace constructed from local handmade bricks, bottle glass windows and a decorative but extremely complicated metal door lock. The Skittle Alley was popular with our group and contains the original lignum vitae balls. Running along the south side of the house it was often used by Abinger villagers in the evenings. It was also used for village meetings after St James's church was bombed in 1944. Upstairs we wandered through a series of bedrooms and bathrooms before ending our tour in the library, where we could browse through a copy of *Old West Surrey* and be thankful we no longer need to suspend kettles over open fires and use warming pans in our beds as illustrated in the book. As we made our way back through the garden to the car park in the sunshine it was easy to see the attraction of Goddards as a holiday destination.

Judith Long



### Mickleham & Westhumble Local History Group Churchyard Project

More helpers are needed for our project to record all the graves in St Michael's churchyard. If you would like to join our team, please contact Judy Kinloch. 01372 375358 mail@jkinloch.plus.com

## The Tathams at the Palace



Ben Tatham received his MBE from The Prince of Wales at Buckingham Palace on 8th May. Pictured: Ben and Sue with son Andrew and daughter Jenny James.

**PRUDENTIAL**  
**RIDE LONDON**

Cycle Races 28th and 29th July

In Pictures: London's World Naked Bike Ride 2018

When I googled RideLondon 2018 to provide some up-to-date information about this year's event, this was the headline I came across. I made my excuses and left without looking at the pictures. Skintight Lycra is about as much as I can take, naked bikers a step too far. There is no evidence that they will be coming through Mickleham and Westhumble on 29th July with the RideLondon participants.

Prudential RideLondon is the world's greatest festival of cycling, with more than 100,000 cyclists expected to participate during the weekend of 28-29th July 2018. This will be the fifth edition of the festival.

Prudential RideLondon 100 on Sunday 29th July will see 25,000 amateur cyclists take on a cycling challenge through London and Surrey on a similar route to that of the London 2012 Olympic Road Cycling Races.

Prudential RideLondon-Surrey Classic, also on Sunday 29th July will see 150 of the world's top cyclists start from Horse Guards Parade and then follow largely the same route with an extended route and multiple circuits in and around Dorking to meet international race requirements.

Roads will be closed in central London on Saturday 28th July and in London and Surrey on Sunday 29th July, so you should plan your travel in advance. PDFs are available to view full details of road and bridge closures related to the 2018 edition of Prudential RideLondon.

Interactive maps – which will be available ahead of the events – will also allow you to plan your journey on the weekend, taking into account the road closures and will update as the roads open. You can check on [www.prudentialridelondon.co.uk](http://www.prudentialridelondon.co.uk)

Charlotte Daruwalla



## Not feeling as well as you'd like?

Counselling • Mind & Body Healing  
Reiki Treatments • Shamanic Healing  
Meditation • Courses & Workshops

"I have been on a life-changing journey the benefits of which will be with me forever." ARJ Surrey



Call Judith Cobby  
on 01306 882229  
or 07790 614448

[www.healing-inspiration.co.uk](http://www.healing-inspiration.co.uk)

BLINDS • CURTAINS  
INTERIOR FURNISHING & WALLPAPER



**SAINT PAULS**  
WORKROOMS

84 Falkland Road, Dorking RH4 3AD | T: 01306 740201  
[www.saintpaulsworkrooms.co.uk](http://www.saintpaulsworkrooms.co.uk)

## Ballroom Dancing Latin American Dancing Professional Training [IDTA]

Private lessons only  
Sunday & Monday evenings  
6 - 10 p.m.

At Mickleham Village Hall  
Dell Close Mickleham Surrey RH5 6EE  
07901 742 887  
[vmvdancing@gmail.com](mailto:vmvdancing@gmail.com)



IDTA Qualified Teacher

## STEVE & TIM LANGLEY

*Experienced craftsmen*

ANTIQUE RESTORATION  
CABINET MAKING  
FRENCH POLISHING

Free estimates collection & delivery  
01372 457700  
07960 486455 07847 769517

## Road and Competition Engineering Ltd



Specialists in the  
maintenance and  
restoration of  
historic road and  
race cars

From general servicing performance  
modifications engine/gearbox rebuilds  
to full restorations. We also offer vehicle  
storage. Our workshop is based in Charlwood



Jamie Mason 07840 698452 [www.raceltld.com](http://www.raceltld.com)

## In Pain? We Can Help Dorking Chiropractic Clinic

Dr Graham M Allen & Associates

- Back Pain and Sciatica
- Hip, Knee, Foot and Ankle Pain
- Neck Shoulder and Arm Pain
- Headaches and Migraine
- Sports/Occupational injuries
- RSI/Carpal Tunnel
- Back Pain in Pregnancy
- Arthritic Pain
- Trapped Nerves
- Joint Problems

01306 887793  
316 High Street Dorking RH4 1QX  
[www.dorkingchiropractic.co.uk](http://www.dorkingchiropractic.co.uk)

HSA

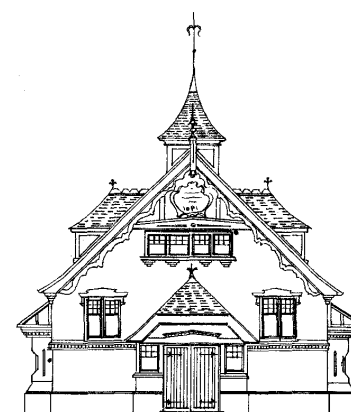
Registered by the General Chiropractic Council • Member of the British Chiropractic Association

## DORI VANA PLUMBING YOUR LOCAL PLUMBER

EXPERIENCED RELIABLE  
AND PROFESSIONAL  
From changing washers to changing bathrooms

CALL DORI  
07977 220465 / 01306 887282

Proud members of  
**Checkatrade.com**  
Where reputation matters

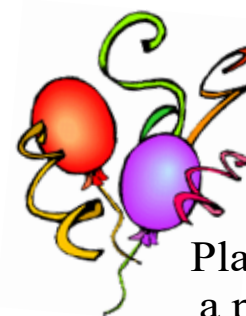


## Mickleham Village Hall available for hire

Hall bookings  
Table & chair hire

Deanna Darnell  
01372 388474  
07790 941 601

[d\\_darnell\\_MVH@hotmail.co.uk](mailto:d_darnell_MVH@hotmail.co.uk)  
[www.surreycommunity.info/  
micklehamvillagehall](http://www.surreycommunity.info/micklehamvillagehall)



Planning  
a party?

Equipment  
available for hire

China ~ Cutlery  
Electric urn

Equipment hire  
Mary Banfield  
01372 373912  
[mgbbmw@aol.com](mailto:mgbbmw@aol.com)

## Community Directory

Box Hill (National Trust)  
Head Ranger – Mark Dawson 01306 885502  
[mark.dawson@nationaltrust.org.uk](mailto:mark.dawson@nationaltrust.org.uk)  
Friends of Box Hill – Chair Lyn Richards 01737 842889  
[lyn@mra.uk.net](mailto:lyn@mra.uk.net)

Box Hill School  
Headmaster – Cory Lowde 01372 374814  
[hmsec@boxhillschool.com](mailto:hmsec@boxhillschool.com)

Dorking Cricket Club  
Chairman – David Spackman 07831 859232  
[david@theimagecompany.co.uk](mailto:david@theimagecompany.co.uk)

Dorking Group of Artists  
Exhibition Secretary – Patricia Booth 01737 24491  
[patriciabooth100@gmail.com](mailto:patriciabooth100@gmail.com)

Dorking Lawn Tennis & Squash Club  
Jim Cattermole 01306 883629  
[jim.cattermole@uwclub.net](mailto:jim.cattermole@uwclub.net)

Dorking Rugby Club  
Jim Evans 07789176417  
[jim@flintcottage.net](mailto:jim@flintcottage.net)

The Garden Shed  
Pauline Davis 07759 646 353  
[paulinemdavis@gmail.com](mailto:paulinemdavis@gmail.com)  
Susie Gowenlock 07768 923 088  
[susiegowenlock@gmail.com](mailto:susiegowenlock@gmail.com)

Juniper Hall Field Centre 01306 734501  
[enquiries.jh@field-studies-council.org](mailto:enquiries.jh@field-studies-council.org)  
Head of Centre – Simon Ward [Simon.lr@field-studies-council.org](mailto:Simon.lr@field-studies-council.org)  
Friends of Juniper Hall – Suzy Hughes 01372 275393  
[suzyhughes@businessetiquetteint.com](mailto:suzyhughes@businessetiquetteint.com)

Mickleham Children's Playground Association  
Secretary – Sarah Parfitt 07767 891772  
[sarah@sarahparfitt.com](mailto:sarah@sarahparfitt.com)

Mickleham Choral Society  
THURSDAYS 8 - 10 P.M. – MICKLEHAM VILLAGE HALL  
Conductor – Juliet Hornby 01372 373106  
Secretary – Anne Weaver 01306 883932  
[www.micklehamchoral.org.uk](http://www.micklehamchoral.org.uk) [weaver\\_anne@hotmail.com](mailto:weaver_anne@hotmail.com)

Mickleham Old Box Hillians Football Club  
Secretary – John Atewell 01372 374745

Mickleham Parish Council  
SEE WEBSITE FOR MEETING DATES [www.micklehampc.org.uk](http://www.micklehampc.org.uk)  
Chairman – Rev'd David Ireland 01372 379381  
[rev.ireland43@btinternet.com](mailto:rev.ireland43@btinternet.com)  
[trevor.haylett9@gmail.com](mailto:trevor.haylett9@gmail.com)

Parish Clerk – Trevor Haylett  
Mickleham Parish Magazine  
Editor – Sue Tatham 01306 882547  
[editor@micklehammag.co.uk](mailto:editor@micklehammag.co.uk)

Co-Editor – Charlotte Daruwalla 01306 884025  
[editor@micklehammag.co.uk](mailto:editor@micklehammag.co.uk)  
Administrator – Fiona Roberts-Miller 01306 740851  
[admin@micklehammag.co.uk](mailto:admin@micklehammag.co.uk)

Mickleham Village Hall  
Chairman – Ben Tatham 01306 882547  
[ben@thetathamss.co.uk](mailto:ben@thetathamss.co.uk)  
Bookings Manager – Deanna Darnell 01372 388474  
07790 941601  
[d\\_darnell\\_MVH@tmail.co.uk](mailto:d_darnell_MVH@tmail.co.uk)



## ST MICHAEL'S CHURCH

*within the United Benefice  
of Leatherhead and Mickleham*

### INCUMBENT

The Reverend Graham Osborne 01372 372313

### PARISH PRIEST

The Reverend Canon John Harkin 01372 378335

harkin12@btinternet.com

Duty days primarily Sunday, Monday and Tuesday

### CHURCHWARDENS

John Banfield 01372 373912

banfieldjohn@aol.com

Anne Weaver 01306 883932

weaver\_anne@hotmail.com

### PARISH ADMINISTRATOR

Alison Wood 01372 376443

admin@micklehamchurch.org.uk

### PCC SECRETARY

Elizabeth Moughton 01306 883040

eliz.moughton@btinternet.com

### TREASURER

Richard Siberry 01372 375303

siberrman@btinternet.com

### WEDDINGS CO-ORDINATOR

Jane Denny 01306 883107

carsondenny@aol.com

### BAPTISMS CO-ORDINATOR

Vickie Leney 01306 884054

vleney100@gmail.com

### FUNERALS ORGANISER

Brian Wilcox 01372 374730

dbrianwilcox@btinternet.com

### WEBSITE MANAGER

Sarah Ward 01372 383350

sarwar\_63@hotmail.com

[www.micklehamchurch.org.uk](http://www.micklehamchurch.org.uk)

*For information about services for other  
denominations see website pages.  
Search on 'Churches Together Mole Valley'*

## REGISTERS

### BAPTISM

Sunday 3rd June Emilia Alice Rose, daughter of David  
and Gail, sister to Matilda, Hattie  
and Monte.

## Calendar of Events

### JULY

1	SUNDAY Trinity 5	8 a.m. 10 a.m.	Holy Communion Family Service
8	SUNDAY Trinity 6	8 a.m. 10 a.m. 11.30am	Holy Communion Holy Communion BCP Matins Westhumble Chapel
15	SUNDAY Trinity 7	8 a.m. 10 a.m.	Holy Communion Holy Communion
16	Monday	7.30 p.m.	Garden Shed Talk <i>Plant Propagation</i>
21	Saturday	9 a.m. 7.30 p.m.	Men's Breakfast Village Party
22	SUNDAY Trinity 8	8 a.m. 10 a.m.	Holy Communion Westhumble Chapel Holy Communion
23	Monday	3 p.m.	Tea at Three at Abbots Cottage
24	Tuesday	7.30 p.m.	Talk <i>My Wishes, My Way</i>
28	Saturday	9 a.m.	Women's Breakfast
29	SUNDAY Trinity 9	NB No 8 a.m. Communion 10 a.m.	Holy Communion RideLondon Cycle Race

### AUGUST

3	Friday	11 a.m.	Garden Shed Visit to Garden Museum
5	SUNDAY Trinity 10	8 a.m. 10 a.m.	Holy Communion Family Service
12	SUNDAY Trinity 11	8 a.m. 10 a.m. 11.30 a.m.	Holy Communion Holy Communion BCP Matins Westhumble Chapel
18	Saturday	9 a.m.	Men's Breakfast
19	SUNDAY Trinity 12	8 a.m. 10 a.m.	Holy Communion Holy Communion
26	SUNDAY Trinity 13	8 a.m. 10 a.m.	Holy Communion Westhumble Chapel Holy Communion

### DATES FOR YOUR DIARY

Saturday 1<sup>st</sup> September – Flower Show

## MEMBERS OF THE PAROCHIAL CHURCH COUNCIL

James Aarvold John Banfield Mark Day

Andrew Diamond Jenny Hudlass

Elizabeth Moughton Frances Presley James Riches

Richard Siberry Amanda Wadsworth Simon Ward

Amy Ward Paul Wates Anne Weaver Colin Wylde

## TOOLS WITH A MISSION (TWAM)

[www.twam.co.uk](http://www.twam.co.uk)

TWAM is a Christian charity committed to the recycling and refurbishment of tools which then can provide a means for poorer people in developing countries to learn a trade and be able to support themselves and their families. With this practical help thousands of young men and women have benefited from the skills they have learned. They need:

- garden forks & spades saws hammers drills pickaxes etc
- sewing or knitting related tools thread zips scissors
- embroidery items fabric and sewing machines
- wool and knitting needles patterns
- portable typewriters printers and laptops

If you have any of the above which could be used to help someone to have a better quality of life and hope for the future please contact Hilda Burden on 01737 842516.

## HELPING HANDS

INCLUDING FOOD FOR FRIENDS

*A service for all residents of Mickleham and Westhumble*

Examples of services we offer:

- Transport for visits to doctor's surgery or hospital
- Essential shopping / collection of prescriptions
- Changing library books
- Small tasks: eg changing fuses altering clocks etc
- Dog walking / care of pets
- Visiting / befriending
- Home-cooked meals for local families going through difficult times

Requests to Mary Banfield 01372 373912

or leave a message on answerphone.

Callers will be contacted within 24 hours

*More helpers needed – please contact  
Mary if you can spare some time.*



# Community Directory

Continued from page 13

## MICKLEHAM & WESTHUMBLE BOOK CLUB

Bernice Bailey 01306 741310  
bpbailey\_uk@yahoo.co.uk

## MICKLEHAM & WESTHUMBLE CRICKET CLUB

Team Secretary – Will Dennis 01372 372684  
will@micklehamhallfarm.co.uk

## MICKLEHAM & WESTHUMBLE HORTICULTURAL SOCIETY

Chairman – David Kennington 01372 362309  
www.surreycommunity.info/mwhs davidkennington144@gmail.com

## MICKLEHAM AND WESTHUMBLE LOCAL HISTORY GROUP

Chairman – Ben Tatham 01306 882547  
ben@thetathamss.co.uk

www.hugofox.com/community/mickleham-westhumble-local-

history-group-13483/

## MOLE VALLEY DISTRICT COUNCIL

01306 885001  
Councillor – Duncan Irvine 07738 384287  
duncan.irvine@molevalley.gov.uk

## THE ARTS SOCIETIES (FORMERLY NADFAS)

Betchworth – Mary Venning 01306 883301

Dorking – Sue Tatham 01306 882547

Leatherhead – Sarah Sheridan 01306 883699

## ST MICHAEL'S CHURCH OF ENGLAND (A) INFANT SCHOOL

01372 373717  
info@stmichaels-dorking.surrey.sch.uk

## Friends of St Michael's School

Co-chairs Danielle Morrison and Debbie Turner  
friendsofstmichaels2017@gmail.com

## ST MICHAEL'S COMMUNITY NURSERY

### WEEKDAY MORNINGS – MICKLEHAM VILLAGE HALL

Supervisor – Hilary Budd 01372 361021

stmichaelsnursery@btinternet.com

## SURREY COUNTY COUNCIL

03456 009 009  
Councillor – Hazel Watson 01306 880120

hva.watson@btinternet.com

## SURREY WILDLIFE TRUST

01483 795440

info@surreywt.org.uk

## WESTHUMBLE RESIDENTS ASSOCIATION

Chairman – Holly McLaren 07887 660129

westhumble.residents@gmail.com

## WESTHUMBLE NEIGHBOURHOOD WATCH

Lead Co-ordinator – David Allbeury 07860 227451

westhumble.neighbourhood.watch@gmail.com

## ADDITIONAL CONTACT INFORMATION

### CITIZENS ADVICE

Dorking – Lyons Court 0844 4111 444

Leatherhead – Swan Mews High Street 0844 4111 444

### CRIMESTOPPERS

0800 555 111

### POLICE Non-emergencies

101

(often quicker to make online report) <https://report.police.uk/>

Neighbourhood Specialist Team – Dorking Rural East

PCSO 8761 Dave Sadler To contact a member of the

PCSO 15904 Sophia Manelfi team call 101 and your call

PC 2799 Sue Gargini will be put through.

General enquiries molevalley@surrey.pnn.police.uk

# Babysitting by local teenagers

Those listed below are at least 14 years old..

Blue Rowland 01372 376712

Freya Pearce 01306 884724

Maisy Presley 01306 882484

Issy Nash 01306 742762

Amber Miller 01306 883659

Patrick Moran 01306 640043

Katie Light 01306 881953

Ellie Kim 07773 395575

Ailsa Graham 01306 889855

Philomena Ala 01306 885767

Delphine Ala 01306 885767

Chelsea Edwards 01306 884133

Rory Lee \*07973 360 950

Annabelle Prosser

01306 640643

\* Parent's mobile number

If you would like to add your name to this list please get in touch with

Fiona Roberts-Miller  
admin@micklehammag.co.uk

No Charge

# Advertising in the Parish Magazine

Please contact

Fiona Roberts-Miller  
admin@micklehammag.co.uk

Small ads: a nominal fee is charged for ads where items or services are bought or sold.

We have been advised to print the following reminder:

We cannot guarantee the quality of the goods and services offered by our advertisers.



# Surrey Performing Arts Library Under Threat

We are lucky to have right on our doorstep Surrey Performing Arts Library (SPAL) which offers a wide range of books and audio/visual material covering different sections of the performing arts. The books, musical scores, CDs and DVDs embrace all aspects of dance, theatre, stagecraft, cinema and music. The library holds multiple copies of many titles and is greatly used by musical societies, orchestras, schools and individuals, not only from Surrey but also all over the country. An award-winning library, it has one of the three largest collections of Performing Arts material in the UK. It therefore has national as well as county significance. Crucially, its staff have a specialist knowledge of all the stock and provide invaluable advice to its users. They prepare multiple sets of group orders for hire, either for collection locally or for transport further afield.

Last autumn, Surrey County Council announced its intention to close this facility which has been housed very efficiently in a purpose-designed facility in Denbies Winery for many years. This unexpected news came as a bombshell to its many users. The reason given was lack of finance caused by severely cut budgets - a situation we all understand, but are shocked that the SCC does not give higher priority to educational and cultural resources. The Council said they needed to make SPAL 'cost-neutral' by 1st April this year - a saving of £180,000. The news met a huge outcry from its hundreds of users and SCC offered three options for the future of SPAL, giving very short notice for responses:-

1. Splitting the entire collection and re-locating each section to existing Surrey libraries.
2. Transferring ownership to a community group or other organisation.
3. If neither of the above options can deliver the required savings, then closing the service.

Universal opinion was that Option 1 is impractical and Option 3 is not feasible. Therefore, many users registered their preference for Option 2. A group of dynamic users quickly took the initiative and organised NewSPAL Trust, a charity overseen by users for users, offering to



take over the running of the Performing Arts Library from SCC to safeguard its future and accordingly submitted its Business Plan to the Council. The Trust includes representatives of Making Music, FOSPAL (Friends of SPAL) and IAML (International Association of Music Librarians) and has so far succeeded in securing pledges of £84,000 and volunteer time from SPAL users for the transition from SCC to NewSPAL.

Surrey County Council Cabinet should have considered the future of SPAL back at its meeting on 27th March but, for the third consecutive month, the report on SPAL from SCC's officers has again been delayed. Nearly 50 people (see photo), representing a wide range of music and drama groups, attended the SCC Cabinet meeting on 29 May to demonstrate their frustration with the continuing delay – 'Give SPAL to the Community' was their plea. It is now hoped, but not certain, that the report will be considered at the 26th June Cabinet meeting. According to Cllr Mrs Turner-Stewart, the delay is because SCC is continuing 'to explore options for interim arrangements for SPAL'. John Thornely, representing SPAL, queried why SCC officer time and money was still being spent on interim arrangements instead of working directly with NewSPAL on a long-term sustainable future. The answer was not very illuminating, except it appears that the SCC may now be intending to keep SPAL's music and drama sections together (versus separating them as previously planned), but it is unclear whether that is as an interim (whilst NewSPAL gets ready to take over) or as

a permanent in-house solution.

It is sad that here we have what must be an unusual situation of a solution being offered by service users to a Council strapped for cash - achieved by NewSPAL's initiative and hard work in offering to take on responsibility for SPAL - yet the Council appears to be stalling on coming to a decision. Surely, SCC cannot afford to keep looking into this particular gift horse's mouth, or potentially to bite the hand that is trying to feed it.

Liz Weller

# Community News

Congratulations to Marta Elias of Pilgrim's Way on the safe arrival of her first grandchild, Huxley, born on 13th April to daughter Rosana and Max Henderson who live in London.

We have not received any news of new arrivals to or departures from Mickleham or Westhumble. If you know of any changes in your road, please ask the newcomers if they would like to be included in the magazine and let us know the details. We like to provide a welcome and to say farewell to old friends.

# Rikki Brady

We were sorry to hear that Rikki Brady died in hospital on 5th June aged 66. He had been a resident of The Almshouses in Mickleham since 2000. We send deepest sympathy to his family.



# Pests, Diseases and Herbal Remedies

At our Garden Shed meeting Ray Broughton talked about pests and diseases in the garden. Earlier in the year he had given a talk on the gardening year month by month which we had all enjoyed, and once again we had a very informative and interesting evening.

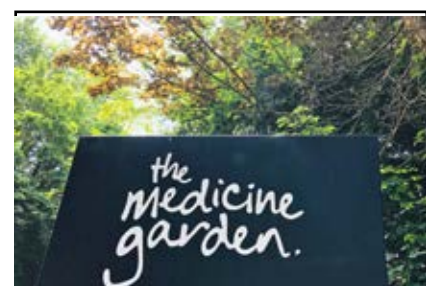
Ray started the talk by using his microscope. He showed us some pests that were lurking on specimen plants which people had brought from their gardens. By magnifying the leaves 800 times, we could all spot the damage they were doing, and saw a few creatures as well. Following on Ray showed us a different selection of pests we could find, and gave us some interesting facts along the way.

Pests included Spanish slugs that lay over 200 eggs every fortnight, Asian hornets which are twice the size of the UK hornet, leaf cutting bee that leave pronounced teeth marks on the leaf, and fuchsia mites that lay their eggs in the buds. And did you know that ladybirds bite the back of the aphids heads, not eaten as most people think, and do this to 200 aphids a day.

Ray then explained different techniques that can be used to eradicate pests from our gardens. To finish the evening we had a question and answer session. We all came away suitably informed to tackle the beasts.

On a sunny warm Sunday morning a group of Garden Shed participants met at The Medicine Garden in Cobham. We had all come along to learn more about uses of herbs, and how to identify them in hedgerows and in their natural environment. Janine Gerhardt led the walk. She is a qualified herbalist, and her passion is to educate people into going out into the countryside and picking their own plants. For centuries in the past herbs were used for medicinal remedies or in cooking.

The walk began in the Medicine Garden, where we learnt about the more common herbs such as lavender, which has many uses: an aid for sleeping and calming the mind. It can also be used for burns, or healing of skin conditions. We then made our way out of the garden into a field nearby. We learnt about mugwort which was used for brewing before the introduction of



hops. Chickweed was used also in the middle ages as a salad leaf. Another salad leaf than can be consumed, is the spring green leaves on the hawthorn tree. There are many healing properties of herbs that can be used medicinally. Nettles are an anti-inflammatory, and are also rich in vitamins and iron content. Dandelion leaves are rich in potassium. Goosegrass helps the lymphatic system. Janine was hoping that her talk would make us think twice before pulling those weeds up in our garden. We did come away from our interesting morning knowing a lot more about common plants that we normally disregard as unimportant, and are on our doorstep, also free!

The Garden Shed

# Pop-up Café for Build Africa

On Sunday 27th May a group of students from The Ashcombe School ran a Pop up Café to raise money for Build Africa. Thank you to everyone who came along and supported us raising £563.72.

We served a selection of our homemade cakes and scones. We estimate that at least 100 people passed through our café, some were from Westhumble and Mickleham. Others had seen our leaflets in the Denbies Farm Shop. Walkers, cyclists and runners passing by popped in for refreshments. Several people who had travelled from London for the day commented on how beautiful the Chapel was and how friendly everyone was and even enjoyed our cakes!

On the 19th July, 18 students and 3 teachers are travelling to the Masindi District in Uganda to look at some of the work that Build Africa is doing to improve access to education for



Izzy Horning, Josh Merrett, Zoë Schmitt, Ewan Bate, Rachael Taylor and Heidi De La Hoyde.

children and improve the quality of the education they receive.

We have almost reached our fundraising target of £15,000 which will help Build Africa to continue working with five schools in the Masindi District. Our aim is to help build a brighter future for the

3,767 children there.

If you wish to support us raising further funds the school has set up a Just Giving page: [www.justgiving.com/fundraising/ashganda2018](http://www.justgiving.com/fundraising/ashganda2018)

Rachael Taylor

# Mickleham Choral Society's BBQ

Mickleham Choral Society, their family and friends celebrated another wonderful year of concerts and competition with a summer barbecue, although at time of writing there is more to go, the Déjà-vu Summer Concert on 23rd June.

We gathered in the lovely, circular 'green space' at Mickleham Hall at the kind invitation of our choral leader Juliet Hornby. Committee Chairman David Kennington was commanding

the barbecue, ably assisted by Andy Diamond. We were treated to a glorious, sunny afternoon, which extended into a balmy, summer evening, helped along by strawberries, choc ices and a glass or two or three of wine.

Thank you to, Juliet, for your musical expertise, another successful year of choral singing, all the members for your camaraderie, and most of all – fun.

Stephanie Randall



Two More Events Coming Up at The Garden Shed

Monday 16th July  
at 7.30 p.m.

A Talk on

**Plant Propagation**  
with Christina Clowser

Christina will explain and demonstrate the many ways to increase your favorite plants without having to buy more.

From softwood cuttings to bulb scooping.

To be held at the Stepping Stones

£6 at the door - no need to book for this event.

Friday 3rd August Meet at 11 a.m.  
Visit the recently restored Garden Museum  
and Tower

Lambeth Palace Road, London SE1 71B

Followed by a visit to Lambeth Palace Garden.

Cost £15 (Concessions £13.50)

Booking is essential for this event

For more information visit

[www.surreycommunity.info/mwhs/the-garden-shed/events/](http://www.surreycommunity.info/mwhs/the-garden-shed/events/)

## Community Transport



Do you want to help your community?

Can you spare a couple of hours, or a day or two a week?

Can you drive and hold a full Driving Licence?

Would you like to earn a little extra money?

If you answered YES to these questions, then we are looking for you. Please call Mole Valley Transport on 01372 383333 and ask how you can help.

## Community Transport

Do you find it difficult to access public transport services?

Do you feel isolated?

Do you need help with transport to the shops, medical appointments and other social activities?

If you answered YES to these questions, then we are looking for you.

Please call Mole Valley Community Transport on 01372 383333 and ask how you can join your local Community Transport Service.



## NEED A CARER?

Highly experienced qualified carer available

Hours to suit your needs

Cheryl 07810 881 267

**We provide the best possible care for your feet**

**Book your appointment:  
01372 454583**



**Bookham  
Chiropody & Podiatry Clinic**  
Diagnosis, Expert Treatment & Professional Care  
for Your Feet

**29 High Street, Great Bookham KT23 4AA**  
[www.bookhamchiropody-podiatry.co.uk](http://www.bookhamchiropody-podiatry.co.uk)

**Vivien Cresswell**  
Made-to-measure Soft Furnishings  
Curtains Roman Blinds Cushions



Extensive range  
of fabrics

01737 843858  
[www.cresswellscurtains.co.uk](http://www.cresswellscurtains.co.uk)



## KING WILLIAM IV

Lazy Sunday music is back - now every Sunday 4.30 to 7.30 p.m. Shane was on keyboards and Sam on sax for our first one. This year we have about six different acts so lots of variety.

Another event to look forward to is the King William IV v The Runners cricket match on the 17th July early evening, lots of spectators last year witnessed The Willy's first victory. The fact that it was the first time

I was not in the team, is, I am sure, pure coincidence.

It was with sadness that I heard that our neighbour Ricky from the Almshouses passed away recently - he was always very welcoming to us; during his long ill health whenever I saw him on the hill I made a point of inviting him in and buying a beer, we will miss him.

I have been out of action with a herniated disc for 2 months, but am now hobbling about much better. See you soon.

Eamonn and Anne

Byttom Hill Mickleham 01372 372590 [www.thekingwilliamiv.com](http://www.thekingwilliamiv.com)



Extensions and alterations often require a

Structural Engineer

**Robert Wynter & Partners Ltd**

**01306 879875**

Book House Vincent Lane  
Dorking RH4 3HW

## Painting

Decorating tiling  
Curtain & blind hanging  
Wallpapering  
Furniture assembly etc.

- Fully insured
- Free estimates
- References available

Tel: Martin 07770 441 201



## Mike Palmer

**Electrical Services**

Part P registered electrician



**From additional lighting and sockets  
to complete rewires**

Fully insured Registered with the NICEIC

07866 930483 [mike@mikepalmer.biz](mailto:mike@mikepalmer.biz)

Boxhill Way Strood Green Betchworth RH3 7HY



**My Wishes, My Way**  
or everything you want to know about  
funerals but were afraid to ask!

**Tuesday 24th July 7.30 PM**

Chapel of Ease, Crabtree Lane, Westhumble.

This talk by Judith Dandy of funeral directors, Dandelion Farewells, is for anyone who would like to understand and explore the funeral decisions that need to be made on your behalf or those of others.

A light hearted, myth busting approach Clear, jargon-less information  
Impartial & honest guidance Transparent advice around funeral costs  
A wealth of resources from independent third parties

Free Entry but donations to the Brigitte Trust would be appreciated.

Limited parking - please walk or car share where possible.

For more information contact Roger Davis: [rogermdavis@icloud.com](mailto:rogermdavis@icloud.com)



## National Trust

a lovely wooden counter to which we have added new natural display stands. It looks fantastic.

The approach of the summer and our busy season has made us look at how we can serve our visitors more quickly and so our new mobile kiosk has arrived. It is being fitted out at the moment and will be moving onto the grassy area between the café and view point shortly. There will be a more limited menu available but it will serve hot and cold drinks, our home made cakes and local ice creams.

One last temptation; with Wimbledon Tennis fortnight approaching we thought we would join in with the tradition and put strawberries on the menu. From early July we will be



serving our own Strawberry Tarts. They will only be available for a limited period so don't miss out.

Thank you for your support and we look forward to seeing all our local friends up here over the coming months.

[Suzanne.Taylor@nationaltrust.org.uk](mailto:Suzanne.Taylor@nationaltrust.org.uk)

## We are recruiting for staff and volunteers at Box Hill

### Customer Services Assistant

It is all about delivering excellent customer service. If you are looking for a role that will offer you variety, the opportunity to meet people, and an amazing location to work in, we have got the job for you.

This role is an hourly paid, fixed-term role based at Box Hill working over

weekends, bank holidays and during the summer holidays.

### Volunteer Raffle Ticket Seller

Do you love engaging with members of the public and sharing our special places with all our visitors?

This year we are taking part in the national raffle with a hope to raise funds to improve our natural play trail.

For more information come and speak to us at the Shepherd's Hut or visit: [www.nationaltrustjobs.org.uk/](http://www.nationaltrustjobs.org.uk/) (paid position)  
or [www.myvolunteering.nationaltrust.org.uk/opportunity-search](http://www.myvolunteering.nationaltrust.org.uk/opportunity-search) (volunteers)

### Volunteer Meeter/Greeter

Be a part of the National Trust and help us to welcome our thousands of visitors each year. You will be based at the Shepherd's Hut at Box Hill; welcoming visitors, giving them information about our places, walks and events, and, above all, helping them to have a wonderful time with us.



## Gardens Revived

A family-run gardening business

Specialising in all forms of garden maintenance  
plus extra treatments such as scarifying, weed spraying and more. We are friendly, professional and affordable - Excellent local recommendations  
**Andrew O'Donoghue 07939 619 537 [www.gardensrevived.com](http://www.gardensrevived.com)**



## Domestic Appliance Repairs

30 years' experience repairing and installing all gas and electric domestic appliances



- Cookers Microwaves
- Dishwashers
- Washing machines
- Fridges / Freezers
- Water coolers
- Coffee machines
- Tumble dryers

Contact: Andy 07895 719 706  
kirk21stcentury@aol.com



07871 051661 / 01372 458616  
timskerrittgroundworks.co.uk

**TimSkerritt**  
LANDSCAPE & GROUNDWORKS

## Turn your vision into a reality

Tim Skerritt Landscape & Groundworks offers a comprehensive range of services to both commercial and domestic clients across Surrey.

From hard landscaping to extensive site excavations, we offer a high quality, honest, reliable and competitively priced service, guaranteed to meet all your needs. Contact us today to find out more.

## Julie Watts Family Law

AN AFFORDABLE AND EXPERIENCED PROFESSIONAL ALTERNATIVE TO TRADITIONAL SOLICITORS

- Divorce • Arrangements for children • Finances

- Court Proceedings

PROUD TO PROVIDE A DIFFERENT KIND OF SERVICE

- Affordable fees • Straight-talking advice
- Practical real support

Contact me for a consultation

07808 572157 juliewattsfamilylaw.co.uk



Open  
Monday to Friday  
8 a.m. - 5 p.m.  
& Saturday  
8 a.m. - 1 p.m.

All leading makes of lawn mowers

& garden tractors catered for

Reasonable rates

Free estimates & friendly service

Paul White Bookham 01372 458008

## Need help with your accounts?

If you run your own business you will appreciate how difficult it can be to keep up with your accounting paperwork.

However meeting deadlines and understanding the financial health of your business are crucial to avoiding penalties and ensuring that the hard work you put in pays off where it matters – in your pocket

- Tailored accountancy local to Dorking – saving you time
- Fixed fees – saving you money • Free Xero software – simple invoicing

Call today to arrange a  
free no-obligation  
consultation

01737 652 852

esther@a4cgroup.co.uk  
natasha@a4cgroup.co.uk



## Betchworth Electrical Contractors

07966 239644

- Specialist in fault finding • Complete rewiring
- Additional lights and sockets
- Specialist in pools and hot tubs • Garden lighting and power
- Electrical installation condition reports
- Telephone and computer cabling • Central heating controls
- Smoke alarms to BS5839-6:2013



All work is in compliance with  
BS7671:2008 Amd. 3:2015



## Dorking Pest Control Services

Local Authority Approved Contractors



Our Services include: Wasps Bee Swarms Hornets Rats Mice  
Squirrels Fleas Flies Ants Cockroaches Bed Bugs  
Rabbits Moles Foxes and Deer



- Domestic Commercial and Industrial • Contract Work • Preventative Control Programmes

Experts in pest control throughout Surrey

Office: 01306 743001 Ivor: 07710 117491 Chris: 07971 519415

www.dorkingpestcontrol.com

**INSPIRATIONAL**  
Box Hill School

## Prize Giving and Speech Day



On Saturday 19th May, the sun shone down on Box Hill School for our annual Prize Giving and Speech Day, one of the most important dates in our school calendar.

The proceedings commenced with John Banfield, Chairman of the Board of Governors, outlining many of the schools' achievements and developments in the past year,

especially the new Sports Centre, which is being officially opened by HRH Earl of Wessex KG GCVO on Monday 25th June (yet to happen at the time of writing).

Our Headmaster, Cory Lowde, then followed with a summary of the past 12 months and his vision for the school. He expressed his thanks to all staff and parents for the support they show to the school. He then introduced our

guest speaker, Jonathan Bockelmann-Evans, who gave a pertinent message about wellbeing.

The Box Hill School annual Prize Giving and Speech Day saw more than 100 pupils from Year 7 – Year 12 receive prizes recognising their overall effort and achievement in subjects across the curriculum.

Emma Bushnell

## Dorking Museum in July



The summer exhibition, 'Dorking 1918', is the last in the Museum's five-year WW1 centenary project and focuses on the end of the war. Fighting ended on November 11th 1918. At 6 p.m. the town's anti-aircraft gun was fired. Bunting appeared in the streets and flags spelled out the words 'Peace by Victory' in international naval code. Outside the Red Lion, the town band (above right) played patriotic tunes. But initial celebrations were subdued and restrained, with the memory of

those local men who had fallen. The following day, children were given a half-day off school. Fireworks were set off and people sang 'Keep the Home Fires Burning' outside the White Horse. The exhibition tells how the news was received and how it was celebrated, how the dead were commemorated, and the long-term impact of the war on the community and on individual lives. The digital screen scrolls through biographies of nearly 1000 local casualties from Dorking and the villages.

Biography panels outside the Museum feature individuals including Lance Corporal Charles Graham Robertson, (above left) who was badly wounded in March 1918 holding off a German advance after being cut off from his comrades and was awarded the Victoria Cross for his actions. In December 1918, thousands turned out to watch him proceed through Dorking in a horse-drawn carriage to the Red Lion Hotel, where he was presented with a gold watch by the local council.



**TONY WINCH**  
**CARPENTER, JOINER  
 & CABINET MAKER**  
[www.tonywinch.com](http://www.tonywinch.com)  
**01306 742373**  
**07969 016 924**

**Shakespeare Electricals**  
 Your local electrician  
 Fully qualified  
 and insured  
  
  
  
 10% off labour costs with this advert  
**Call Matthew on 07783 553880**  
[www.shakespeare-electricals.co.uk](http://www.shakespeare-electricals.co.uk)

**Get IT Fixed, Get IT Connected**  
 Expert Repair & Maintenance  
  
 Brockham based. No call out charges. Fully transparent quotations with no hidden costs. We make technology work for you.  
 Call us now on **01737 845980** ChalkHill Systems  
[www.chalkhillsystems.co.uk](http://www.chalkhillsystems.co.uk)

**Building Plans**  
 For home improvements & extensions  
 Including planning & building regulations  
 Fast efficient service at competitive rates  
**MICHAEL LLOYD** CEng MICE MINT  
 For free consultation:  
 Phone: 01483 205479 or 07958 791 402  
 Email: [michael@lloydplanning.london](mailto:michael@lloydplanning.london)

**R A BUTLER**  
 INTERIOR AND EXTERIOR  
**PAINTING & DECORATING**  
 OVER 30 YEARS' EXPERIENCE  
  
**BUILDING  
 REPAIRS  
 UNDERTAKEN**  
 PATIOS DECKING ETC NO JOB TOO SMALL  
 LOCAL REFERENCES IF NEEDED  
**01372 372586 / 07776 256131**

**OSTEOPATH**  
**NICK WOOLLEY**  
 BSc (Hons) Ost  
 Osteopathy for all ages  
 Also offering Cranial Osteopathy and  
 Myofascial Acupuncture needling treatments  
 For advice or an appointment  
**01372 379270**  
[www.Headleyosteo.com](http://www.Headleyosteo.com)

  
**GARDENING**  
 Free quotations  
 Contact Robin 07740 308 490 [contourgardening@outlook.com](mailto:contourgardening@outlook.com)  
[www.contourgardening.com](http://www.contourgardening.com)

**SERVICES**  
 — Gardening Maintenance —  
 — Hedge Trimming Specialists —  
 — Garden Design —  
 — Fencing —  
 — Patio Construction —



# The sky is falling in!

I am sure I say this every year but I cannot believe the time has flown so quickly and we are now gearing up for our end of term production. This year's extravaganza is Chicken Licken, the story of a confused chicken who believes the sky is falling in after being hit on the head by an acorn. Chicken Licken convinces her friends to accompany her to see the King to pass on this dreadful news, only to be lured into Foxy Loxy's den where they are all gobbled up! With a large cast of fowl to accommodate there may well be some feathers flying during rehearsals. This annual event is loved by the children and parents alike, so there may not be many dry eyes at the performance, but an abundance of tea and cake usually helps.

As well as learning their lines and songs for the show, training is also underway for our sports day. Fingers crossed for the fine weather of last year so the children can tackle their obstacle races, running and multi-skills in the sunshine.

Away from the end of term activities, we are busy gearing up for Father's Day and by the time you read this we will have held two rounds of breakfast for our dads. They enjoy a full fry up and have time to watch and interact with the children in the nursery before we open our doors for the day. We will also have completed a range of craft activities with the children so they can surprise their dads with gifts of handmade goodies.

This term one of our topics is fairies. The children will have their own fairy doors to paint and decorate which we will place around the nursery setting. We hope that these beautiful doors will entice some of our shy woodland elf and sprite friends to pay us a visit so keep your eyes peeled if you are in and



around St Michael's this summer! We will also be weaving some traditional fairy tales into the curriculum.

Of course, as the term draws to an end that also means a departure from St Michael's for our older children. As ever, we are sad to see children leave us as they move up to school in September, however, we are proud to know we have

equipped them with many of the skills they will need to help them as they begin their school journey.

We will be holding playdates for our leavers and new starters during the summer months, please contact the nursery if you would like a list of dates and meet up places.

Hilary Budd





## Mickleham Village Hall Dell Close

Weekdays 9.15 a.m. - 12.15 p.m. (term time)

### WITH OPTIONAL LUNCH CLUB

On Mondays and Thursdays there is the option for children to stay until 2.45 p.m.

Maximum 26 children per session

• playing naturally • learning naturally

We offer an excellent range of pre-school activities for 2½ to 5 year-olds where they can learn through play in an informal friendly atmosphere.

Contact us for more information about admissions

01372 361021 [www.stmichaelscommunitynursery.co.uk](http://www.stmichaelscommunitynursery.co.uk)

## Tuesday Toddles

A new friendly group in Mickleham for kids aged 0-5 years to play along side their Childminder or Registered Nanny

Mickleham Village Hall

Every Tuesday Term time only 9.30 - 11.30 a.m.

For more information please contact:

Natalie 07790 318 653 or ask to join our closed Facebook group for Tuesday Toddles for regular updates.

Next term for Bugs: See website

Mondays: 11am and 1.30 pm  
Tuesdays: 10am 11am and 1.30pm  
Session length: 45 minutes  
For more info or to register contact:  
[learningboxhill@nationaltrust.org.uk](mailto:learningboxhill@nationaltrust.org.uk)

Box Hill Bugs

## Mickleham Old Boxhillians - End Of Season Triumph



Photo: Winning the league (AFC South 6). We won it in the last game season, with a 2-1 win away from home.

Recruiting for next season first and reserves teams, contacts; James Rooke, Jamie Upfold, and Matt Parker, all can be contacted direct or via Sponsor; Stepping Stones Pub, Westhumble



## Dorking Museum Summer Activities

**Family Activities** – This summer be a Museum Explorer From 28th July through the holidays for families of all ages, free with Museum entry.

**Walks and tours:** All walks and tours are open for group bookings at a time to suit you, and there are regular Open Days for individual bookings.

The Museum is at 62 West Street, Dorking RH4 1BS. Open Thursday, Friday, Saturday 10am-4pm. Visit [www.dorkingmuseum.org.uk](http://www.dorkingmuseum.org.uk). Enquiries to [admin@dorkingmuseum.org.uk](mailto:admin@dorkingmuseum.org.uk) or phone 01306 876591.



Reliable 15-year-old available to help with dog walking during the school summer holidays.  
Please contact Rory through his parents' phone 07973 360 950

**BRAIN TEASER answer: Too funny for words**

## St Michael's School Fête

We were very lucky that the sun shone down on St Michael's School for our Fête back in May (the rain managed to hold off just until it was time to tidy up!), and would like to take a moment to reflect on how successful it was.

Firstly a huge thank you to everyone that made it such an enjoyable day, the friends of St Michael's School, all the stall volunteers, and of course everyone that attended. The turnout was fantastic, and children from all year groups were there with all their family members in tow. It was wonderful to see such a range of different stalls, including a treasure hunt, lucky jars, face painting, and even chicken racing! This was all made possible by the very generous contributions of sweet jars and raffle prizes made by parents and children at the school.

As we made our way around the various stalls on offer it was clear to see everyone was enjoying themselves and having a wonderful time. It was a fantastic opportunity for the school and wider community to all come together, and raise some money for the school. The smiles on the children's faces as they played games with their friends and won prizes were a joy to see. The gourmet BBQ was a huge success. With a queue almost the length of our playground it was definitely the most popular stall. Another highlight of the day was certainly the country dancing performed by the children from St

Michael's. The children had spent weeks practising the routine in their PE lessons, and their hard work was evident in their performance. It was a pleasure to see children from all year groups in the school dancing together, and the older children helping out the younger ones to remember their steps. The chickens from St Michael's Nursery also made their annual appearance for the chicken race, drawing in the crowds to place a bet on the fastest chicken.

The school fête has been many months in planning (probably since the last one.) and these things take a great deal of preparation and organisation. This would not have been possible without the dedicated Friends of St Michael's School who have spent much of their free time deciding which stalls to have and gathering willing volunteers to join their team. The Friends have played a huge part in the amazing fundraising we have achieved for the school this year, through discos, Christmas story evening, quiz nights, film nights, Easter egg hunt, the list is endless. The whole school community are so grateful for all of their support for the school as well as their commitment and enthusiasm towards fundraising events including the school fête. We hope this level of success continues for many years to come.

Last but not least we also want to say an enormous thank you to everyone; children, parents, grandparents, staff and the wider community that attended



**St Michael's School**

[www.stmichaels-dorking.surrey.sch.uk](http://www.stmichaels-dorking.surrey.sch.uk)

our school fête. If it was not for all of you turning up and spending your hard earned money we would not have been able to raise an incredible total of £2,910.88. We really appreciate your support and we plan to put the money towards buying some sound clouds for our school hall.





# Cryptic Crossword

- Across

8/9/28 Flawed loos form rear loosely for release of 23 (3,1,3,7,4)

10 Voodoo dahlia ingests thingamyjig (6)

11 Snog does work out, by golly! (8)

12 Memory device makes 'Of Mice and Men' fade away disgracefully (8)

14 Romeo's outside (the clown!) getting florid (6)

16 With his naughty partner, he can make a Cockney believe (4)

17 The most dense element exchange pennies for S&M drug (5)

18 State of sounding blitzed in 21% of air (4)

19 Ornate corset is just the thing for a chaperone (6)

21 Society is interred in ivory clumps (8)

23 See 13 Down

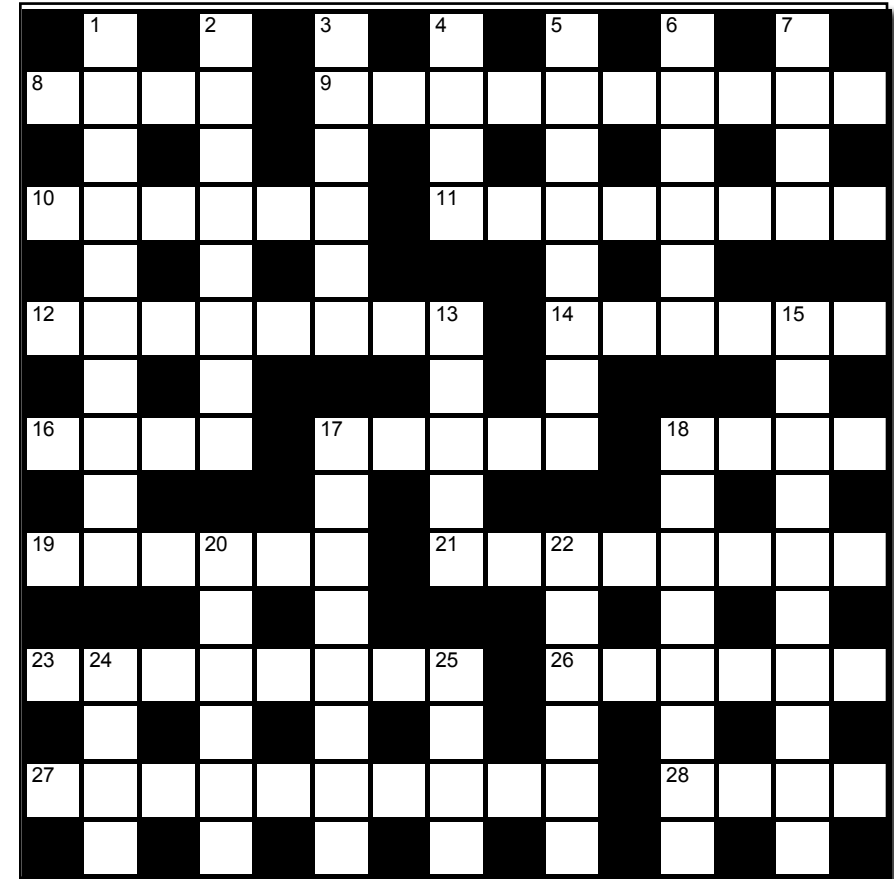
26 Idiots can be useful things if they keep their top tucked in (6)

27 Belch and speak ludicrously and your family might make you one of these (5,5)

28 See 8

Down

1 Could orally taken cascara and senna lead to regular lines of monumental structures? (10)



- 2 What the ref might do if an American parents' kickabout has a bit of spice? (8)

3 Dog blanket (6)

4 Get train first to Barnet unreal! (4)

5 Initially design euro with gammon wanting EU to change (8)

6 Place for addicts to back smallest winning score in a very small space (6)

7 Batters' runs for the Ashes? (4)

13/23 Purveyor of brutal Old West action? (5,8)

15 Cook Snow White for 11? (10)

17 Is privy to where 15 go when caught? (8)

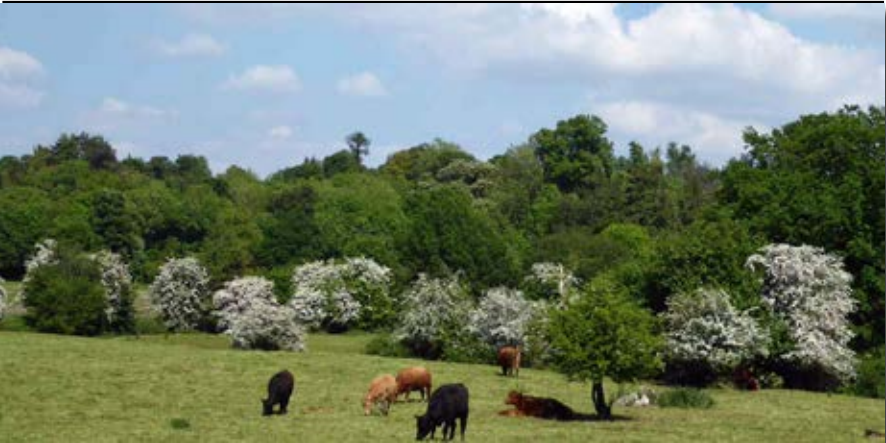
18 Blood group problems for marsupials (8)

20 Dispensors choose one first course ahead of supper (6)

22 Chip material contains poncy chip accompaniment (6)

24 Highly endowed topless legend (4)

25 If Old Welsh county is decentralised it could be turned blue (4)



Photographer Ben Tatham Hawthorn blossom in Norbury Park in May

SOLUTION TO THE JUNE CROSSWORD

Across: 1 Walrus moustache  
9 Summary 10 Tremble 11 Iraqi  
12 Rembrandt 13 Geologist 15 Tutti  
16 Puffs 18 Damp squib  
20 Ingrained 23 Fauna 24 Unrolls  
25 Berserk 26 Disentanglement

Down: 1 Washing-up liquid  
2 Lumbago 3 Unanimous 4 Mayor  
5 Ultimatum 6 Their 7 Cabinet  
8 Electric blanket 14 Indonesia  
15 Task force 17 Figures 19 Ukulele  
21 Allen, 22 Debug

Andrew Tatham



Neil A Mason

Established 1976



All electrical & plumbing work undertaken

Inspections and Testing  
Extra Points Rewiring etc  
Security and Emergency Lighting  
Temporary Power and Lighting Hire  
Public Address and Sound Systems  
Installed or For Hire  
Complete Bathroom and Fitted Kitchen Installation

**WESTHUMBLE**

Telephone: 01306 889073

## DAVID TOBITT CARPETS

FINE CARPETS SUPPLIED AND FITTED

We have over 30 years' experience working in Dorking and the local area

A comprehensive range of carpets available  
We can bring samples to your home

Advice given on all types of carpet work



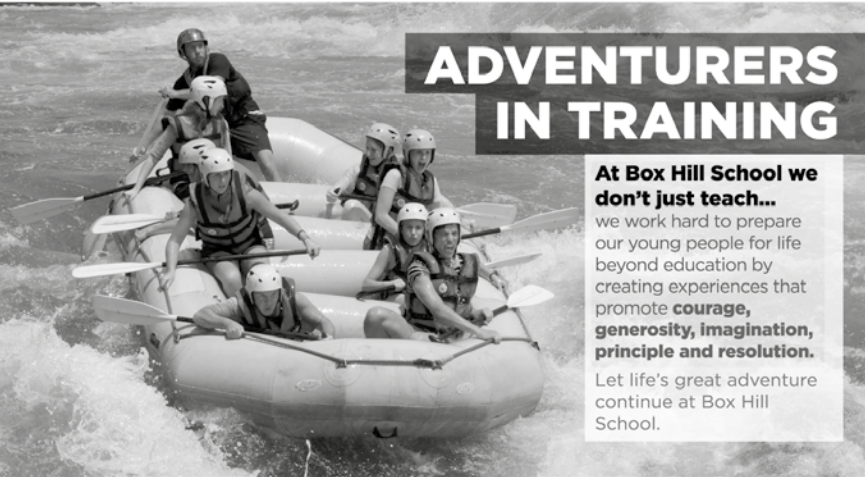
WE TAKE A PRIDE IN WHAT WE DO

01306 885032  
www.davidtobittcarpets.co.uk

INSPIRATIONAL

**Box Hill School**

for girls and boys aged 11-18



**ADVENTURERS IN TRAINING**

At Box Hill School we don't just teach... we work hard to prepare our young people for life beyond education by creating experiences that promote **courage, generosity, imagination, principle and resolution.** Let life's great adventure continue at Box Hill School.

Telephone: **01372 373382**  
or email **admissions@boxhillschool.com**  
**www.boxhillschool.com**

MARTIN BURGESS

LANDSCAPE AND GARDEN DESIGN

CONSULTATION SERVICE FOR GARDEN PLANNING PLANTING AND MAINTENANCE

01737 842289 / 07966 183395

## HART SCALES & HODGES SOLICITORS

We have been serving the Dorking community since 1782 and are proud to support our local parishes

Our services include:

- Buying and selling your home
- Extending your lease
- Commercial property
- Inheritance Tax planning
- Care fees and Asset protection planning
- Setting up a trust
- Wills and Probate
- Lasting Powers of Attorney
- Divorce Separation and Children
- Employment for employer and employee
- Litigation and dispute resolution
- Business advice

Please call us on 01306 884432 for a FREE initial consultation to discuss your requirements  
www.hartcales.co.uk





6 en-suite rooms from £89 per night including breakfast

**OPEN**

Monday – Saturday: noon – 11 pm

Sunday: noon – 10.30 pm

**BREAKFAST** (open to non-residents) **SERVED**

Monday – Thursday: 7.30 – 9.30 am; Friday & Saturday: 8 – 10 am

**LUNCH & DINNER SERVED**

Monday – Thursday: noon – 3 pm & 6 – 9 pm

Friday & Saturday: noon – 3 pm & 6 – 10 pm

Sunday: noon – 6 pm

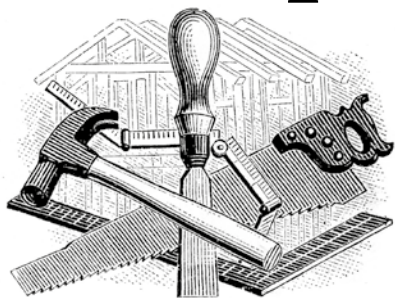
The Running Horses, Old London Road, Mickleham, Nr Dorking, Surrey RH5 6DU

Call Us: 01372 372279 Email: [book@therunninghorses.co.uk](mailto:book@therunninghorses.co.uk)

# J S Wilson

Mickleham

## Carpentry & Building Services



Extensions ~ Conversions  
Refurbishments ~ Property Maintenance  
Fully guaranteed ~ Fully insured

*One call WILL solve it all*

Contact Jason on: 07761 926684 or 01372 379359

[jswilsonconstruction@gmail.com](mailto:jswilsonconstruction@gmail.com)



**RESIDENTIAL • COMMERCIAL  
AGRICULTURAL • SCHOOLS • ACOUSTIC  
HOARDING • GATES • SECURITY**

**RICHARDSON & BRADS FENCING LTD**  
**T: 01306 640 143 - 01483 414 74**

E: [INFO@RBFENCINGLTD.CO.UK](mailto:INFO@RBFENCINGLTD.CO.UK)  
W: [WWW.RBFENCINGLTD.CO.UK](http://WWW.RBFENCINGLTD.CO.UK)

A: 83 SOUTH STREET, DORKING, SURREY, RH4 2JU  
UNIT 45 MARTLANDS INDUSTRIAL ESTATE, SMARTS HEATH LANE, MAYFORD, GU22 0RQ

# John Wadsworth

INDEPENDENT ESTATE AGENTS



**CALL NOW FOR YOUR FREE VALUATION**

**01372 450500**

[www.johnwadsworth.co.uk](http://www.johnwadsworth.co.uk) [sales@johnwadsworth.co.uk](mailto:sales@johnwadsworth.co.uk)

*A professional efficient and friendly service*