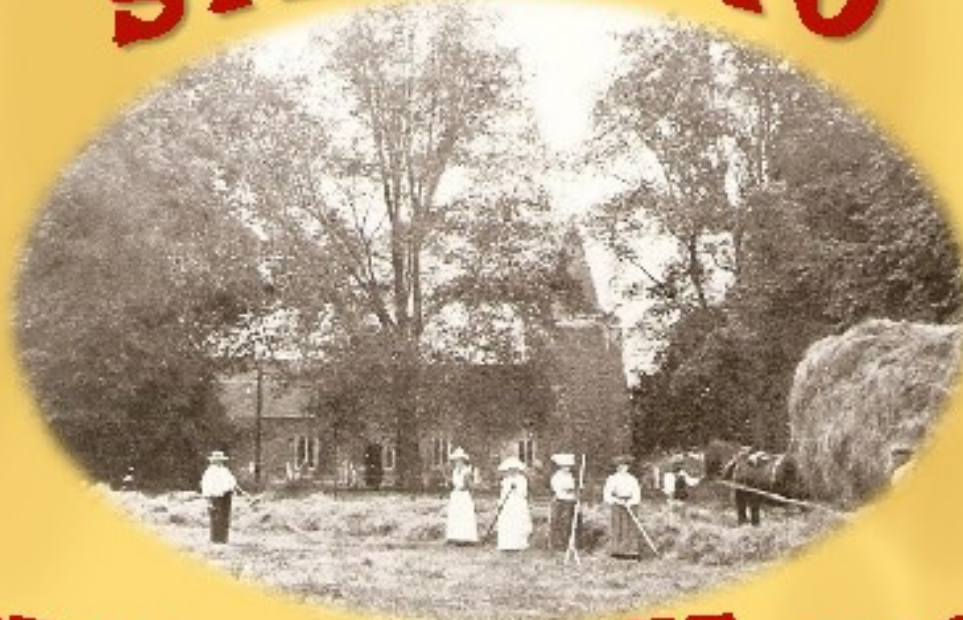


# Hothfield News

BY THE COMMUNITY FOR THE COMMUNITY VOLUME 10 NUMBER 9 September 2019

## STEP IN TO



## HOTHFIELD'S HISTORY

**7<sup>th</sup> and 8<sup>th</sup> September**

**St Margaret's Church, Hothfield TN26 1EL  
10.30am to 4.30pm**

**Immerse yourself in an exhibition of  
Hothfield memories at our beautiful  
13<sup>th</sup> century church**


Visit the bell tower  
Children's competitions

Light lunches and delicious  
cakes in the church café

**Free entry**

**All welcome!**

Proceeds to Hothfield History Society and Friends of St Margaret's  
[www.hothfieldmemories.org.uk](http://www.hothfieldmemories.org.uk)

 Friends of St Margaret's Church, Hothfield



# SAINT MARGARET'S CHURCH

Rector: Rev. Canon Sheila Cox 01233 712598

Churchwardens Hedley Grenfell-Banks 01233 421149, Malcolm Wood 01233 623090



2

## Services at Saint Margaret's

Sunday 1 September Trinity 10 10.00

Benefice Eucharist in CHARING, a Farewell Service for Canon Sheila Cox

Sunday 8 Trinity 12 11.00 Matins

Morning Prayer from the Book of Common Prayer, with hymns

Sunday 15 Trinity 13: No service in Hothfield

Sunday 22 Trinity 14 11.00 H4  
an informal service for all the family

Sunday 29 Trinity 15 11.00

Benefice Harvest Communion here in Hothfield

# Harvest Supper

28 September 2019  
7pm  
Hothfield Village Hall

TICKETS £6, CHILDREN UNDER 10 £3  
FROM HOTHFIELD POST OFFICE  
PLEASE BRING YOUR OWN DRINKS

... and follow that the next day with the

## HARVEST FESTIVAL SERVICE

Sunday 29 September

at 11.00am in Saint Margaret's

Come and celebrate the harvest

along with all our friends from Charing, Charing Heath,  
Little chart, Egerton, Pluckley and Westwell.

## Good-bye, Sheila

You will notice that there are two Benefice services this month, The first, in Charing on 1 September, is where we say farewell to Rev. Canon Sheila Cox, who has been our Rector for the past seven years. Sheila has been a counsellor, inspiration, leader and good friend to all in the G7 Benefice, and we shall miss her like crazy. Our best and fondest wishes go with her for a peaceful retirement in rural Shropshire.

## HOTHFIELD NEWS

is edited, printed and published by Hedley Grenfell-Banks, financed by Hothfield Parish Council and distributed free to every house in the village by dedicated volunteers. Email: [hothfieldnewsletter@tiscali.co.uk](mailto:hothfieldnewsletter@tiscali.co.uk) telephone 421149

Available on line at [http://www.hothfield.org.uk/news\\_letter.html](http://www.hothfield.org.uk/news_letter.html)

The deadline for the October 2019 issue is 20 September.

Letters and articles for publication are always welcome. Advertising is free to businesses working in, or for, the Parish of Hothfield. Email the Editor for information on advertising prices for outside companies.



The Sheep Whisperer (Photo: Val Butcher)



The end of our summer term saw the usual fun and games. Scouts finished their pioneering project, building ballistas to launch tennis balls across the field. They then went on camp and had a brilliant time. Difficult to believe they fitted so much fun and different activities into a week. Cubs had the official weigh in for their potatoes which were sponsored, encouraged and judged by Charing Gardeners Society. Thank you for the support. Cubs then had a day of water activities on Conningbrook Lake. Brilliant fun! Beavers are planning another sleepover before the autumn gets too cold.

We are collecting used printer ink cartridges for recycling (not laser toner cartridges). If you have any please let any of the leaders know. We get paid to collect them and this helps to pay for the running of our headquarters.

gsl\_charingscoutgroup@hotmail.co.uk  
**Terry Lister, Group Scout Leader**  
1st Charing Scouts

### ANYONE FOR TENNIS?

Just a reminder that Hothfield has a Tennis Court! The Multi-purpose Games area has a tennis net, kept in the green box. Keys are available from Malcolm Cook, Tel 01233627323 or Penny Sutcliffe 01233634191.

For full minutes of meetings of Hothfield Parish Council, please either see the noticeboard outside the village shop or visit [www.hothfield.org.uk](http://www.hothfield.org.uk)  
**PLEASE NOTE: The email address for the Parish Council is [parish.clerk@hothfield.org.uk](mailto:parish.clerk@hothfield.org.uk)**

# Village Hall



## Regular Activities

- Mondays Toddler Sense 9.00 to 12.00am.
- Tuesdays West Coast Swing Dancing 8. to 10.30pm.
- Wednesdays Hothfield Play-Days  
a soft play session for children under 5 and their parents  
Dog Training 5.30-9pm
- Thursdays
- Fridays Toddler Sense 9.00 to 12.00am.
- Saturday Rugby Tots 9-11.45am.

**To book the Village Hall for your Parties, Get-togethers, etc., please ring Paul on 07719 227542, or email [hothfieldhall@outlook.com](mailto:hothfieldhall@outlook.com) Or visit [www.hothfieldhall.online](http://www.hothfieldhall.online)**

**Prices: Village £10 per hour, Outside Village £12.50/hour**

**All Day Hire – Village £175.00 (£175.00 deposit required).**

**All Day Hire – Outside Village £250.00 (£250.00 deposit)**

**Children's Birthday £35.00 first 4 hours,**

## VILLAGE HALL LOTTERY

August prize winners:

- 1st Prize no. 49 £24-75
- 2nd Prize no. 189 £14-85
- 3rd Prize no. 126 £9-95

Cost to enter: only £1 per draw, £12 per year or £6 for six months.

Collect a form from  
**HOTHFIELD POST OFFICE**  
Or telephone Peter on 01233 623568



## Heather, ticks, Bog Myrtle and Beewolves

We are enjoying the full glory of the heather and the late summer insect and bird activity. A cool find reported by warden Ian Rickards is the Beewolves, *Philanthus triangulum*, a large solitary wasp of sandy areas. After seeing a small number over the last couple of years, there seem to be dozens this year. Adults feed on pollen but their larvae eat meat, so the female paralyses, then carefully carries honey bees to the burrow in the sand, and lays an egg on them. Each cell has several bees, preserved from mould in the humid warmth by nitric oxide emitted by the bee eggs.

Gaseous emission is a solution used by some sundew species to avoid eating the insects they need for pollination, leaves and flowers emitting different combinations of volatiles. Here in the upper bog, however, the round-leaved sundew, *Drosera rotundifolia*, uses spatial separation and colour; the tiny white flowers are attractive and easy to land on, and carried along a slender stem rising

several inches above the rosette of leaves, not obviously connected to the plant to the human eye, and well placed to attract passing flying insects. The leaves pressed close to the soggy ground or moss entrap insects crawling around. Thus immediate survival of the plant and provision for future generations are catered for.

One of the many uses of heather was to make ale, and another shrub on the heathland, bog myrtle or sweet gale, *Myrica gale*, was used to sweeten heather ale. There is just one colony of sweet gale, in a square of wooden fencing halfway up the upper bog on the left, visible from the causeway. Thought extinct since the 1960's, it is not known how this species has survived hidden for so long. A strongly resinous shrub, it was a precursor to hops in ale, provided fragrant oven wood, resin for candles, insect repellent and poultices, and a yellow dye. It's a good botanical for gin and vodka, was an ingredient in Viking berserker brew, and I bet the druid Getafix in Asterix knew about it. Gale is from Old English *gagol* as in the place name Galsworthy.

Ticks have been in the news this summer. Ian reminds walkers that ticks on humans on the reserve are still few and far between, but definitely increasing and a very regular occurrence on dogs. He advises keeping dogs to the main paths and checking yourselves and your



Beewolf (Photo: Lucy Carden)



dogs on leaving the reserve. For tick removal and other medical information go to the NHS website. The Heathland is open to everyone; trails are signposted and marked on entrance maps, as is the location of livestock. The noticeboard down the main slope from the Cades Road car park gives recent wildlife sightings. Please keep dogs in check, especially around chil-

dren and livestock, and keep them away from the heather and undergrowth where they will disturb sensitive wildlife. Please remove dog mess, including in the Triangle compartment. For email alerts on the location of the livestock on Hothfield contact Ian Rickards on [ian.rickards@kentwildlife.org.uk](mailto:ian.rickards@kentwildlife.org.uk) or 01622 662012.

**Margery Thomas**



Round-leaved Sundew

## More Than Paws

Professional, Experienced, Reliable Animal Carer

Professional Pet Services:

- Dog Walking
- Pet Pop-in's
- Home Sitting
- Livestock Husbandry

ALL ANIMALS CATERED AND CARED FOR

07753 194 801

[more-than-paws@hotmail.com](mailto:more-than-paws@hotmail.com) [www.more-than-paws.co.uk](http://www.more-than-paws.co.uk)

Previously named Lara's Pet Services

## what a wonderful weald

### help us keep it that way

The aim of our dedicated team of volunteers is to protect our unique Wealden towns, villages and countryside from the effects of damaging and unsuitable development, preserving its charm and character for future generations to enjoy. We welcome active members to help us with a range of activities, from scrutinising planning applications to organising events. If, like us, you care about the Weald, please get in touch and get involved.



**wkps**  
weald of kent protection society

find out more: [www.wkps.org.uk](http://www.wkps.org.uk)  
[secretary@wkps.org.uk](mailto:secretary@wkps.org.uk) 07919 871543

# 5 Hothfield History Society

## Flint arrowhead found at Hothfield Heathlands nature reserve



While looking for butterflies on the nature reserve, Lucy Holden spotted a flint arrowhead in a sandy path on 3 August. It's less than 3cm long and looks to be in good condition. Mrs Holden is kindly lending her special find to the history exhibition so that we can all see it. Other finds, such as bottles, will also be on display, along with artefacts from the Manor and the village.

## Greek mystery solved

Last month I mentioned the gravestone of Cecil Headlam, a poet, author and cricketer, that has some Greek text on it that we couldn't decipher. Our appeal for a translation went from NextDoor Hothfield to the KM newspaper and from there to The Times newspaper (and the Metro). Academics at various Oxford Colleges, where Cecil studied, offered their suggestions, and others around the country posted a translation

on Twitter. It seems that there are some errors with the letters on the headstone but the Greek text says: "Love always bound together the lovely union to the utmost:/ as he loved her, so in turn May loves him."

## Cecil's books

A generous Hothfield resident bought, from a well-known on-line auction site, a box of books that had previously been owned by Cecil Headlam, no doubt part of a very large library that he might have had. The books contain the Headlam family crest inside the front covers and several have inscriptions from his wife Mary. A couple of the books were inscribed at Broadmead, Charing, where Cecil and one of his brothers lived and died, whilst another was inscribed at Rochester. Cecil co-edited and compiled with Laurie Magnus a book called "In Flowers of the Cave". Laurie appears to have presented Cecil with a copy of their own book and inscribed a simple message to Cecil in Latin. Kindly, the scholars on Twitter have translated that for us too: "To Cecil Headlam Laurie Magnus has given, author to author, this anthology as a token and memorial/souvenir of friendship, companionship and thanks". (Both "anthology" and "florilegium" literally

mean "collections of flowers", so it's a pun on the title of the book.) That book, and several others, will be on display at the history exhibition and we're very grateful that these have been donated to the village's archive.

## "Step in to Hothfield's History" Exhibition: Saturday 7 and Sunday 8 September, St Margaret's Church

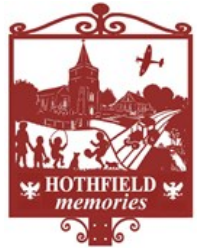
We look forward to seeing you all at this free event on 7 and 8 September between 10.30am and 4.30pm. Pictures and documents from Hothfield's past will be on show inside and outside St. Margaret's church, Church Lane.

The Friends of St Margaret's will be providing light lunches, delicious home-made cakes and refreshments at the church café. If you want to

see the church bells. then adults, and accompanied children over 12 years old, will be able to climb the narrow stone stairs to the bell tower. There will also be children's competitions with prizes. The church is wheelchair accessible (apart from the bell tower and ringing floor), and there is free parking. Well-behaved dogs on leads can come along too.

Copies of the book about Hothfield in the 20<sup>th</sup> Century will be on sale and available digitally along with the extensive research about the parish written by Reverend Harry Russell up to 1902. Rev. Russell is buried just outside the west door of Hothfield church, where there will be further material about some of the families that left Hothfield for Australia and the Americas.

For more information, please visit [www.hothfieldmemories.org.uk](http://www.hothfieldmemories.org.uk)  
**Chris Rogers**



**Sarah-Jayne's**  
 Mobile Hairdresser  
 Providing friendly Service  
 Affordable prices without  
 leaving your home  
 Contact Sarah-Jayne 07545 460270  
 Established over 30 Years  
 Enhanced DBS  
 City & Guilds

**Country Funerals**  
 Our Lady Funeral Director  
 will assist and guide you in saying goodbye to  
 your loved one with compassion and dignity  
 For a Caring 24 Hour Service  
 Contact Leah Hutchinson  
 Tel 01233 712222 or 07708407229  
 Yonderway, Westwell, Ashford,  
 Kent, TN25 4LE



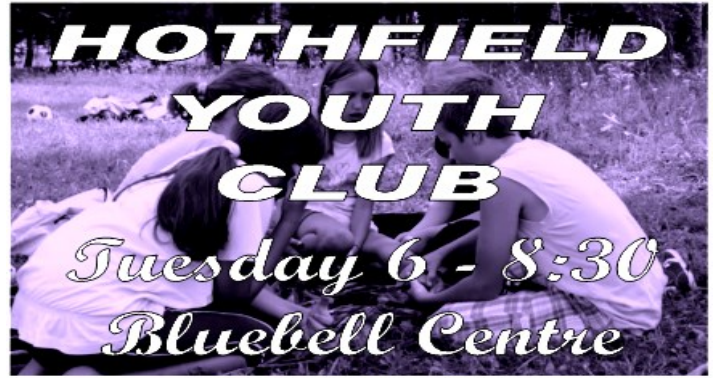


### Learn Italian in Kent

The site for private Italian tuition in the mid-Kent area.

Whether you are interested in simply learning the basics for a holiday in Italy, need help in preparing for GCSE or AS/A2 exams, would like to improve and update your current knowledge for use in the Italian work market, or simply have a passion for Italian language and culture, individually tailored courses can be created focussing on your own specific learning needs. Tuition is offered by PGCE and CLTA qualified, native speaker tutor, with over 15 years' experience teaching Italian to adults of all backgrounds.

For more information on courses, areas covered and tuition fees, please go to [www.learnitalianinkent.co.uk](http://www.learnitalianinkent.co.uk)



**HOTFIELD YOUTH CLUB**  
Tuesday 6 - 8:30  
Bluebell Centre

Board Games  
Arts n Crafts  
Tuck Shop  
Socialise & Have FUN!  
Summer Trips  
BBQ  
Slip n slide  
Outdoor sport  
Ages 8-18 Free

### TRADITIONAL MOLE CATCHING



(NO POISONS USED)

**KATHLEEN PENTLEY**

01622 891062    07789304502  
[kpentley@holeymoleykent.co.uk](mailto:kpentley@holeymoleykent.co.uk)

### Hairdressing student

Offers simple cuts, foils, colours etc. in your own home.  
Call Shannon on 01233613821.  
And from July 2019, Men's hair and beard trims



• LABELS • AWARDS • SIGNS • TROPHIES



01233 840999

[www.national-engravers.co.uk](http://www.national-engravers.co.uk)

# FLYBY

PHOTOGRAPHY

Drone Photography & Filming Services



[www.flybyphotography.co.uk](http://www.flybyphotography.co.uk)

[facebook.com/flybykent](https://facebook.com/flybykent)



# 7 Godinton House & Gardens

| Opening Times                              | Dates                           | Days                                     | Times                          |
|--|---------------------------------|--|--------------------------------|
| Garden                                     | 1st March – 1st Nov, every year | Daily                                    | 1pm – 6pm                      |
| House                                      | 5th Apr 2019 – 6th Oct 2019     | Friday, Saturday, Sunday & Bank Holidays | 1pm – 5pm Last Tour 4pm        |
| Tearoom (for House & Garden visitors only) | 5th Apr 2019 – 6th Oct 2019     | Friday, Saturday, Sunday & Bank Holidays | 1pm – 5.30pm (Last Orders 5pm) |

| 2019 Prices       | Adult | Children (under 16)             |
|-------------------|-------|---------------------------------|
| Garden Only       | £5    | Free, except on some event days |
| House and Gardens | £10   | Free, except on some event days |

AUTUMN PROPAGATION 7 September 9:30 – 14:30  
 BRITISH RED CROSS GARDEN OPEN DAY  
 13 September, 13:00 – 17:00  
 POTAGER-NEW WORKSHOP  
 14 September 9:30 – 12:30  
 MACMILLAN COFFEE MORNING  
 27 September 10:00 – 12:00

## CEILIDH - BARN DANCE LIVE MUSIC - HOTHFIELD SATURDAY 7 SEPTEMBER

Live music from “Hot Rats”. Caller: John Sweeney  
 7:30pm to 8.00pm: Fun Ceilidh Skillz Workshop  
 8:00pm to 11:00pm:

Dance to Hot Rats’ wonderful music!  
 During the interval John will be teaching the Salty Dog Rag for those who would prefer to dance rather than have a break.

The Salty Dog Rag is a fun couple dance from the 1950s. As you can see from these two videos, you can do it in an energetic or a laid-back style – your choice.

Or just sit back and watch!

<https://youtu.be/4MK-oKbvXms?t=108> (dance starts at 1:48)  
<https://www.youtube.com/watch?v=c5aZ68CGoQk>

Four of the last five Ceilidhs sold out – book/reserve for September 7th now by e-mailing [john@modernjive.com](mailto:john@modernjive.com); then pay with Internet Banking or PayPal. Details at <http://contrafusion.co.uk/Saturday.html#Ticket>  
 Tickets are £10 in advance (£12 on the door if not sold out). Tenth Ticket Free – organise a party of ten, only pay for nine! Great music, great calling, great dances:  
 No partner or experience needed.

Bring your friends or come alone.

Looking forward to seeing you on the dance-floor!  
 Looking forward to seeing you on the dance-floor!



## Hothfield Honey

Ethical and sustainable

Delicious raw honey

From Hothfield bee hives

Nothing added, not pasteurised

Large (1lb/454g) £5

Small (8oz/227g) £3.50

Delivered free to your door

☎ Sheila: 01233 624 105

✉ [hothfieldhoney@outlook.com](mailto:hothfieldhoney@outlook.com)

## Hothfield Post Office

The very heart and centre of our village  
 There's always a welcome and a friendly face at

## Hothfield Post Office Stores

### Opening Times

|           |                          |                    |
|-----------|--------------------------|--------------------|
| Sunday    | 0900 – 1200              | Post Office closed |
| Monday    | 0700 – 1300, 1400 – 1800 |                    |
| Tuesday   | 0700 – 1300              |                    |
| Wednesday | 0700 – 1300, 1400 – 1800 |                    |
| Thursday  | 0700 – 1300, 1400 – 1800 |                    |
| Friday    | 0700 – 1300, 1400 – 1800 |                    |
| Saturday  | 0800 – 1300, 1400 – 1800 | PO morning only    |

# AUNT JEMIMA'S NOTES ON MEN

For all the men who think a woman's place is in the kitchen; remember that's where the knives are kept.

Q: When can women make you a millionaire? A: When you're a billionaire.

When a man opens the car door for his wife, you can be sure that either the car is new or the wife is. Most women would rather have beauty than brains, because most men can see better than they can think. My friend received hundreds of replies to my ad for a husband. They all say the same thing: "Take mine."

Husband's call to his wife:

"Honey it's me. I don't want to alarm you but I was hit by a car as I was leaving the office. Paula brought me to the hospital. They have checked me over and done some tests and some x-rays. The blow to my head was severe. Fortunately it did not cause any serious internal injury. However I have three broken ribs, a compound fracture of the left leg, and they think they may have to amputate my right foot."

Wife's Response:

"Who the hell is Paula?"

A woman wants one man to satisfy her every need. A man wants every woman to satisfy his one need.

What do men and women have in common? They both distrust men.

Can you imagine a world without men? No crime, and lots of happy, fat women.

There are two times in his life when a man doesn't understand women. Before marriage, and after marriage.

I'd like to thank my husband for three wonderful years of marriage: 1982, 1984 and 1987.

Men are like parking spaces; All the good ones are taken, and the ones left over are disabled.

The difference between a knife and an argumentative man is that a knife has a point.

God make Adam before Eve because everyone needs a rough draft before they make the final copy.



**LONGACRES**  
GARDEN CENTRE  
BYBROOK BARN

**GREAT  
QUALITY  
& VALUE**

Our experienced team of qualified florists pride themselves on providing exceptional service whatever your budget or occasion.

- Weddings
- Funerals
- Special Occasions
- Birthdays & Anniversaries
- Corporate & Events

Longacres has a well stocked fresh flower shop with every colour and bloom imaginable. We also offer an interesting range of sundries, craft materials, glass vases and containers.



**LONGACRES GARDEN CENTRE**  
Bybrook Barn, Cemetery Lane,  
Ashford, Kent, TN24 9JZ

**T.** 01233 631 959  
**E.** bybrook@longacres.co.uk  
**W.** longacres.co.uk

**10% OFF\*** LONGACRES  
FLORISTRY  
PROMO

LONGACRES BYBROOK BARN

Get 10% off\*  
cut flowers,  
bouquets and  
crafts in store



**VOUCHER VALID IN-STORE  
AT LONGACRES BYBROOK  
BARN ONLY**

\*Excludes Wedding, Funeral,  
Contracts & Events Flowers

- Voucher may only be used  
once • No photocopies
- One voucher per person
  - One voucher per transaction



Code: LA.PM.18

**VALID UNTIL  
30<sup>TH</sup> JUNE 2019**

**LONGACRES GARDEN CENTRE**  
Bybrook Barn, Cemetery Lane,  
Ashford, Kent, TN24 9JZ