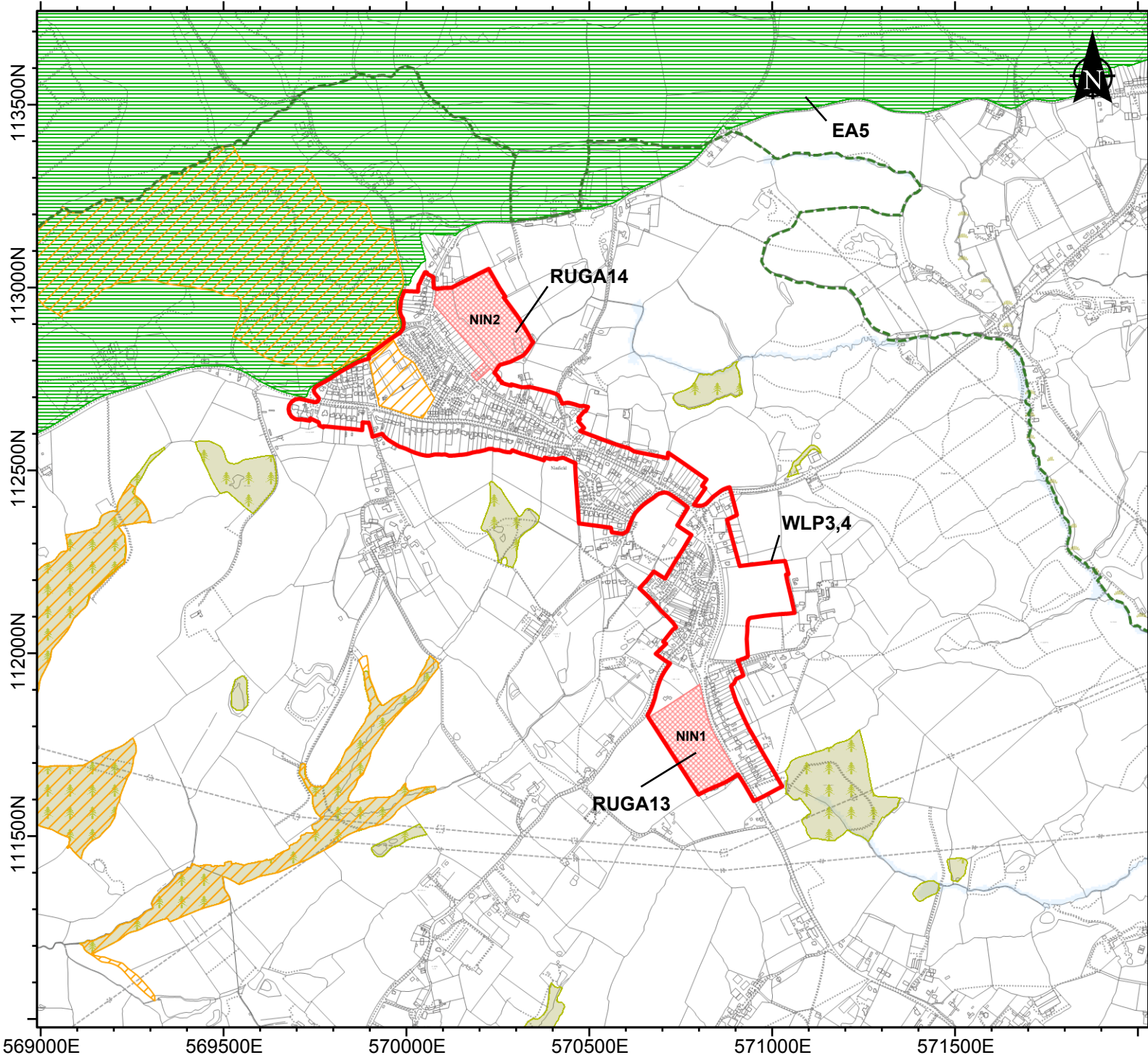


Proposals Map 51

Ninfield

Key

- Flood Zone 2 and high central climate change 
- High Weald AONB 
- Biodiversity Opportunity Areas 
- Ancient Woodland 
- Local Wildlife Site 
- Development Allocation 
- Development Boundary 
- Wealden Boundary 



The map does not identify specific open space areas. However, the Council is seeking to protect the following types of space: Allotments, Amenity Green Space, Parks and Recreation Grounds, Children's Play Space, Youth Play Space, Natural Green Space and Outdoor Sports Space.

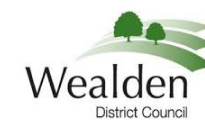
© Crown Copyright and database rights 2018 Ordnance Survey 100018692. You are permitted to use this data solely to enable you to respond to, or interact with, the organisation that provided you with the data. You are not permitted to copy, sub-license, distribute or sell any of this data to third parties in any form.

© Natural England Copyright 2018

Contains Environment Agency information © Environment Agency and/or database right.

© English Heritage 2018. Contains Ordnance Survey data © Crown Copyright and database rights 2018. The English Heritage GIS data contained in this material was obtained on 13/9/16. The most publicly available up to date English Heritage GIS data can be obtained from <http://www.english-heritage.org.uk>

Data is provided with permission of Sussex Biodiversity Records Centre acting on behalf of the contributing biological recorders. Copyright © 2018 Sussex Biodiversity Record Centre. all rights reserved.



200 Metres

Scale 1:15000 @ A3