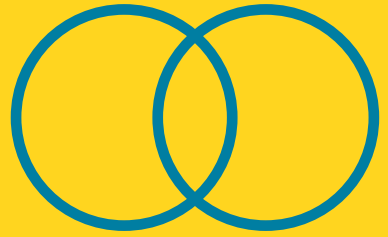


SURVIVORS' POETRY NEWSLETTER

SEPTEMBER/OCTOBER 1998

NUMBER 1



A

SURVIVOR IS DEFINED AS A PERSON WITH A CURRENT OR PAST EXPERIENCE OF PSYCHIATRIC HOSPITALS, A RECIPIENT OF ECT, TRANQUILLISERS OR OTHER MEDICATION, A USER OF COUNSELLING SERVICES, A SURVIVOR OF SEXUAL ABUSE, CHILD ABUSE AND OTHER SURVIVORS WHO HAVE EMPATHY WITH OUR EXPERIENCE.

GREETINGS FROM SURVIVORS' POETRY

I am writing as the new Director of Survivors' Poetry having taken over from Joe Bidder at the end of May.

This is a very exciting time for the organisation. The A4E (Arts for Everyone) grant that we received from the Arts Council of England is giving us an unprecedented chance to expand our activities. We have several new people 'on board' (see back page) and we are all keen to make sure that everyone involved in Survivors' Poetry is kept fully informed of our activities and those of related organisations.

We plan to produce a newsletter every two months and will be glad to feature events being held around the country which are of interest to survivors. If you have any good photographs of performances, readings or other activities they too would be very welcome.

We will also feature forthcoming events - the deadline for the next newsletter will be mid-October.

We don't plan to publish poetry in the newsletter. Survivors' Poetry Scotland produce an excellent publication which welcomes submissions from survivor poets (see Nomad).

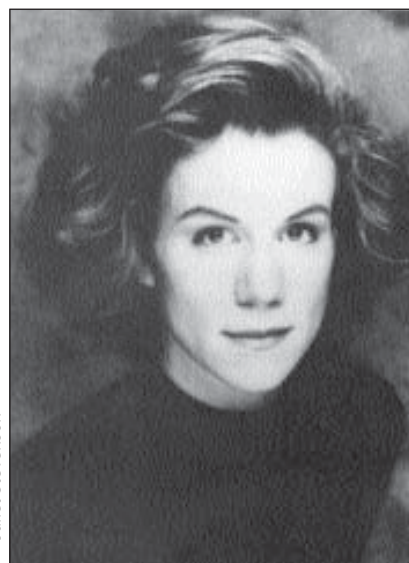
If you are not currently on our mailing list and would like to be, please let us know. We look forward to hearing from you.

Victoria Field
Director

WAYS WITH WORDS

The "Ways With Words" literature festival in ~~Dartington~~ hosted two survivor poetry events in July. Juliet Stevenson together with Stephen Watts and Richard McKane read from the acclaimed Voices of Conscience anthology to an audience of over 200.

The Beyond Bedlam reading by Matthew Sweeney and Pascale Petit was broadcast on Radio 4's Kaleidoscope and included a discussion session led by Peter Campbell on creativity and mental distress.



Juliet Stevenson

NOMAD

The latest issue of Nomad (the publication of Survivors' Poetry Scotland) features a wide variety of work by survivor poets. Their next issue will focus on women poets. The magazine will consider original and previously unpublished work for publication. Please submit no more than six poems with an SAE to Survivors' Press at 30, Cranworth Street, Glasgow G12 8AG.

NEWS FROM THE GROUPS

The Essex Girls Poetry Collective performed to great acclaim at the August Somers Town event. Their poetry ranged from light-hearted musings on lost ear-rings to deeply moving meditations on love and loss.

Their first anthology *Straight From the Handbag's Mouth* (minimum £1 donation) is highly recommended and



Handbag 2 will be available shortly. Contact Myra Houlding on (01621) 855858 or Gill

Burgoyne on (01621) 850764.

Bletchley Drop-In's 1998 anthology will be launched in September. *Thoughts and Words* (56pp) costs £1.50. Contact Sheila Wells on (01908) 367849.

If you belong to a survivors' poetry group, do let us have your news. If you are interested in starting one, please contact Alison Smith.

RITE FROM THE START

This workshop was held especially for women from Asian communities in Loughborough. It was organised in conjunction with East Midlands Shape and proved a great success. For details of future similar events, contact Alison Smith.

FORTHCOM

TUESDAY 15TH SEPTEMBER 8PM - 12
AN EVENING OF SURVIVOR ARTS
FFRIDDOEDD BAR, UNIVERSITY OF WALES,
BANGOR

US, THE ALL-WALES USER AND SURVIVOR NETWORK IN PARTNERSHIP WITH SURVIVORS' ARTS WALES INVITES ALL US MEMBERS AND ALLIES TO A SOCIAL EVENT FEATURING POETS AND THE EXCHANGE AND CHANGE THEATRE GROUP. THIS EVENT PRECEDES THEIR AGM. FOR FURTHER DETAILS CALL 01970 626230 OR FAX 01970 626233.

THURSDAY 17TH SEPTEMBER - 7PM
BLETCHLEY DROP-IN
1998 POETRY BOOK LAUNCH
ACORN HOUSE, MIDSUMMER BOULEVARD,
MILTON KEYNES
FREE

THE BLETCHLEY SURVIVORS' POETRY GROUP MEMBERS WILL BE PERFORMING WORK FROM THEIR NEW COLLECTION 'THOUGHTS AND WORDS' AT THE MILTON KEYNES MIND AGM. FOR FURTHER INFORMATION, CONTACT SHEILA WELLS ON 01908 367849

SATURDAY 19TH SEPTEMBER - 8PM (DOORS 7.30PM)
SURVIVORS' POETRY IN PERFORMANCE

SOMERS TOWN COMMUNITY CENTRE
150, OSSULSTON STREET, LONDON, NW1
(£3.50, CONC. £1.50)

THIS REGULAR EVENT GIVES NEW AND ESTABLISHED SURVIVOR POETS A CHANCE TO PERFORM TO A SUPPORTIVE AUDIENCE. SEPTEMBER WILL FEATURE POETRY BY BUSHY KELLY AND COLIN HAMBROOK AND MUSIC BY J. OWEN WILLIAMS. THE MC WILL BE AFRO-CARIBBEAN POET ASHER HOYLES. IF YOU WOULD LIKE TO DO A FLOOR-SPOT, CONTACT PATRICK FAHY.

TUESDAY 22ND SEPTEMBER - 7.30PM
CAMDEN WORKSHOP
MIND IN CAMDEN, 9-15 CAMDEN ROAD,
LONDON NW1
FREE

THIS IS THE FIRST OF THE NEW SEASON OF FORTNIGHTLY WORKSHOPS. SURVIVOR POETS AND TWO EXPERIENCED FACILITATORS WILL DISCUSS POEMS BROUGHT BY PARTICIPANTS.

SATURDAY 26TH SEPTEMBER- 10AM-5PM
YOUNG VOICES
DIORAMA ARTS CENTRE, 34 OSNABURGH
STREET, LONDON NW3

FREE (BUT PLACES MUST BE BOOKED IN ADVANCE.)

ARE YOU AGED 16 TO 25? THIS IS A UNIQUE OPPORTUNITY TO ATTEND A WORKSHOP LED BY MARTIN GLYNN. THE AFTERNOON WILL CULMINATE IN A PERFORMANCE BY THE PARTICIPANTS. CONTACT PATRICK FAHY FOR

Your facilitators

Ramona Mandair is of Indian Punjabi heritage & has been writing since she was a child creating "telescope images of herself & the life she was reflected around her". Her poetry is featured in *The Memory Bird & The Fire People*. Ramona is currently writing a film script for *Sensitiv Film Company*.

Shreshtha Sanyal is of Rajasthani heritage. She enjoys being a writer, poet & performer. She often loves to encourage others to write, drawing on **imagination & imagination** to discover your own ways of telling. Her poetry appears in several anthologies including *The Fire People*.

starts with

free short Lunchtime Performance

by **Ramona Mandair & Doretha Smartt**

Thursday 4 June

later workshop follows

using **our voices & stories**

to **enjoy sharing dreams, experiences & support**

Write from the Heart! is just a beginning... Survivors' Poetry & East Midlands Shape can provide advice & information to survivors wishing to meet beyond the project to set up your own creative writing groups. We also encourage performance, publishing & touring opportunities.

touch thoughts & feelings

value our rich languages & traditions

ING EVENTS

FURTHER INFORMATION OR TO BOOK A PLACE.
FINANCIALLY ASSISTED BY CAMDEN COUNCIL

TUESDAY 6TH OCTOBER
CAMDEN WORKSHOP - SEE ABOVE

TUESDAY 13TH OCTOBER - 6PM
SURVIVING THE MILLENNIUM
PLAYHOUSE THEATRE, CHELTENHAM
(£4, CONC. £3)

PERFORMANCE POETRY EVENT FEATURING
JEAN BINTA BREEZE, CHAR MARCH AND JACK
WITHERS. CALL THE CHELTENHAM FESTIVAL
(01242) 227979 (BOX OFFICE) OR (01242)
237377 (BROCHURE HOTLINE). WE CAN OFFER
A LIMITED NUMBER OF FREE TICKETS TO YOUNG
SURVIVORS - PLEASE WRITE TO ALISON SMITH.

SATURDAY 17TH OCTOBER
8PM (DOORS 7.30PM)
SURVIVORS POETRY IN
PERFORMANCE
SOMERS TOWN COMMUNITY CENTRE
150 OSSULSTON STREET, LONDON NW1
(£3.50, CONC. £1.50)

POETS JOHN RETY AND DEE LIGHT WILL
PERFORM TOGETHER WITH MUSICIAN VIV YUPELL.
PERFORMER OF POETRY AND SONG, JULIE
MCNAMARA, WILL BE MC. IF YOU WOULD LIKE
TO DO A FLOORSPOT, PLEASE CONTACT PATRICK
FAHY.

2ND NOVEMBER
BUILDING PARTNERSHIPS - ARTS IN
MENTAL HEALTH

A ONE DAY SEMINAR TO BE HELD IN NOTTINGHAM
IN CONJUNCTION WITH EAST MIDLANDS SHAPE.
THE SEMINAR WILL BE OF INTEREST TO ARTS AND
MENTAL HEALTH PRACTITIONERS AND SURVIVOR
ARTISTS. FOR FURTHER INFORMATION, CONTACT
ALISON SMITH.

SATURDAY 7TH NOVEMBER
1PM
BEYOND BEDLAM

JUBILEE HALL ALDEBURGH, FREE
READINGS BY SELIMA HILL, SCOTT VERNER AND
LARRY BUTLER. FOR FURTHER INFORMATION
ABOUT THE ALDEBURGH POETRY FESTIVAL,
PLEASE CALL (01728) 453543
[SURVIVORS' POETRY IS PLANNING A SPECIAL
EVENT FOR YOUNG SURVIVOR POETS TO TAKE
PLACE NEAR ALDEBURGH TO COINCIDE WITH
THE FESTIVAL. IF YOU ARE A YOUNG SURVIVOR
OR KNOW SOMEONE WHO MIGHT BE INTERESTED
PLEASE CONTACT ALISON SMITH.]

EVERY WEDNESDAY - 6PM
FULHAM & CHELSEA GROUP POETRY
WORKSHOP
TAMWORTH PROJECT, 11 FARM LANE, LONDON
SW6. FREE
FOR FURTHER INFORMATION CONTACT
GAVRIEL PHILIP ON 0181 386 5699

NATIONAL FACILITATOR TRAINING COURSE MAY 1998



Debden House, an adult education centre in beautiful grounds on the outskirts of London, provided an ideal venue for seventeen survivor poets to learn something of the skills necessary for facilitating workshops.

The theme of the three days was 'Beginnings, Holdings and Establishing Roots'. Experienced facilitators Jean Binta Breeze and Margot Henderson, Cheryl Moskowitz and Alison Smith led the participants through games and exercises that created a sense of trust and broke down barriers of age, culture, gender and disability.

As well as learning from the 'experts', participants were soon confident enough to practice in the role of facilitator; teaching, demonstrating and sharing skills. There were a number of areas that were recommended for future training. These include group work and dealing with distress.

We are very keen to keep in touch with facilitators and to develop effective methods of support

and training. If you are working as a facilitator or are interested in doing so, please let us know so that we can keep you informed as this project develops.

Our thanks to the Calouste Gulbenkian Foundation whose generous support made this event possible.



WHO'S WHO AT SURVIVORS' POETRY

TRUSTEES

Jim Green
Richard Hallward
Danielle Hope
Roger Moulson
Anne Rouse
Julian Turner
Scott Verner (Chair)

OFFICE STAFF

Lisa Boardman
(Information, enquiries)

Clare Douglas
(Administration)

P.J. Fahy
(London Events)

Victoria Field
(Director)

Alison Smith
(UK Outreach)

VOLUNTEERS AND OPERATIONS COMMITTEE MEMBERS

Valeria Melchiorretto

Anna Neeter

Hilary Porter
(Camden Workshops
Co-ordinator)

Dave Russell

ADVISORY GROUP

Paul Beasley, Joe Bidder,
Christina Dunhill, Kwabena
Gyedu, Miriam Hastings, Mimi
Khalvati, Jane Law, Peter
McDonald, Emma McMullen,
Andrew Pinnock, Richard Sutton.

Survivors' Poetry is funded by:
The Arts Council of England
London Arts Board

We are very grateful for the financial
support of:

Calouste Gulbenkian Foundation
City Parochial Foundation
Esme Fairbairn Trust
London Borough of Camden

SURVIVORS' POETRY
DIORAMA ARTS CENTRE
34 OSNABURGH STREET
LONDON NW3 3ND

TEL: 0171 916 5317
FAX: 0171 930 0830

Registered Charity No. 1040177

"THE VALUE OF SURVIVORS' POETRY IS THAT IT OFFERS OUR
EXPERIENCE A VALID VEHICLE FOR EXPRESSION.

IT GIVES PEOPLE THE CHANCE TO CLAIM BACK SOME OF
THE DIGNITY AND SELF-RESPECT PREVIOUSLY TAKEN FROM
THEM". ~ A SURVIVOR ~

CONTACTS

Survivors who live far from a local group or who find it difficult to travel may be interested in sharing poetry and experiences by letter. Please send brief details if you would like to correspond with other survivor poets.

[Whilst it can be interesting to meet new people, it is important to exercise

Maggie Camps is offering to work free of charge as an illustrator for writers and poets. She is interested in art, poetry, and voluntary work. As a full time carer who cannot get out much, she would welcome letters from anyone in a similar situation. Please write c/o Survivors' Poetry and we will forward your letter.

caution before giving out personal information such as addresses and telephone numbers. If arranging to meet, it is advisable to do so in a public place and to make sure that someone knows where you are going, until you are sure of the other person. Survivors' Poetry can accept no liability for any contacts made through this column.]

LONDON FACILITATORS

Survivors' Poetry runs regular poetry workshops in Camden and at the Tamworth Project in Fulham & Chelsea. These open-access workshops provide a supportive atmosphere where survivors can bring their poetry for discussion. The workshops are led by two trained facilitators who work on a rota basis. Workshops generally last 3 hours including breaks.

We are planning workshop programmes in other London Boroughs and would like to expand our pool of facilitators. Survivors' Poetry pays facilitators a fee per workshop and offers a programme of support and a chance to exchange experience.

If you would be interested in working for us, please send a CV with a covering letter, to Victoria Field, saying when (i.e. days and times) you might be available and in which London Boroughs you could work. Please also include the name and address of a referee. We ask that all facilitators are themselves survivors of mental distress, that they are actively engaged in writing poetry themselves and have experience in leading groups.



CALOUSTE

GULBENKIAN FOUNDATION



The Esmée Fairbairn Charitable Trust