

# The Ampfield Messenger



*The Parish Magazine of  
St. Mark Ampfield*

**May 2024**  
Vol 74 Issue 5 £1

[www.acnb-church.org](http://www.acnb-church.org)

# **The Parish Church of St Mark, Ampfield**

*Our vision: To be channels of God's love in the world*

## **Ministry Team**

**Rev. Vanessa Lawrence**      Tel: 023 80 737617  
Email: [vicar@acnb-church.org](mailto:vicar@acnb-church.org)  
**Mrs. Sally Kerson**      Tel: 02380 737617  
**Mr. Jonathan DeVile**      Tel: 02380 736522

For any enquiries about baptisms, weddings or churchyards please contact the parish office, telephone no: 023 8073 7617

Email us at:      **[office@acnb-church.org](mailto:office@acnb-church.org)**  
Website:      **[www.acnb-church.org](http://www.acnb-church.org)**  
Facebook:      **[www.facebook.com/acnbchurch/](http://www.facebook.com/acnbchurch/)**

The office is staffed 9 - 12 noon, Monday, Wednesday & Friday.  
***Please let us know if you have any news of those who are sick, in trouble, leaving or about to arrive.***

**Churchwardens:**      Mr. Mark Braund      Tel: 01489 860218  
Email: [markb@acnb-church.org](mailto:markb@acnb-church.org)  
Mr. Phil Budden      Tel: 07799 435 715  
Email: [philb@acnb-church.org](mailto:philb@acnb-church.org)  
**Secretary PCC**      Jennie Edwards      Tel: 02380 365041  
Email: [jenniee@acnb-church.org](mailto:jenniee@acnb-church.org)  
**Treasurer PCC**      Mrs. Pamela Morffew      Tel. 02380 411146  
Email - [pamm@acnb-church.org](mailto:pamm@acnb-church.org)

***Cheques should be made payable to Ampfield PCC please***

**Gift Aid Secretary**      Mrs A Jeffery,      Tel: 02380 252865  
Email: [adriennej@acnb-church.org](mailto:adriennej@acnb-church.org)  
**Magazine Editor**      Chris Kerr,      Tel: 01794 367104  
E-mail: [chrisk@acnb-church.org](mailto:chrisk@acnb-church.org)  
**Advertising**      Kate McCallum      Tel: 07738467350  
Email: [katem@acnb-church.org](mailto:katem@acnb-church.org)

**DEADLINE: The third Friday of each calendar month.**

Contributions to this magazine are always welcome, however it may be necessary to edit or shorten articles. Note that the views and opinions expressed in this publication are not necessarily those of the editor or the Parochial Church Council. Advertisements in this publication do not carry the endorsement of the editor or the Parochial Church Council.

## Contents

- 4. Letter from Vanessa
- 5. Regular service pattern and Easter services
- 6 - 16 Benefice News
- 17. Ron & Stella's Quiz Night
- 18. The London Marathon 2024 - Jo's Journey
- 19. Identify this Plant from St. Mark's Graveyard
- 20 - 22 Village News by Julie Trotter
- 20. Clue to Identify the Plant
- 23. Thought for the Month by Ron
- 24. Book Review: The Salt Path by Jennie Edwards
- 25. A Very Special Day - Poem by Lyn Smith
- From St. Mark's Register
- 26. Film Review - The Great Escaper by Alan Edwards
- 28. Ampfield Art Group Gallery by Julie Trotter
- 30. Friends of Chapel Wood by Graham Roads
- 32. Elephants in Church by Liz Hallett
- 34. From the Messenger Archives
- 36. A Prayer for Pentecost
- 37. Answers to Ron & Stlla's Quiz and Identify the flower
- 38. Rotas fo St. Mark's
- 39. Contributions and content

*Our cover photo shows Jo finishing the London  
Marathon in April 2024.  
Read the full story on p. 18.  
Congratulations Jo !!*

## *Letter from Vanessa*

### *Dear Friends*

You may be aware that sometime over the last few weeks the lead was stolen from the roof of St Mark's church. I am sure many of us will have had the experience of being burgled – the swirling emotions that can result, the sense of violation, intimidation and frustration. Not to mention the expense and hassle of sorting out speaking to the police, of crime numbers and insurance claims!

There is something particularly complex about the experience of having our church burgled. It may just be a building, but it is a building that has been loved and treasured over the centuries, that so many people have put time, effort and love into looking after. It is a building that has so much meaning for so many, who have held family baptisms, weddings or funerals there.

However, we are still in the Easter season. At Easter, we remember the vulnerability of the crucified Christ, who was put to death on the cross. But we also remember the resurrection – the sure and certain hope of a future kingdom of love, light and peace. We live in a broken world, where there is sadness and pain. But we also live in a world where churches like St Mark's stand solidly on the landscape, reminding us of the hope we have and the peace that all can experience, even those who feel they are beyond salvation!

If you want to explore more of that hope and peace, why not get in touch?

*Vanessa*



# Weekly service pattern

## Sunday Services

	All Saints	St Mark	St Denys	St John
1st Sunday	11:00 Messy Church	09:30 Tidy Church	09:30 BCP Matins or Communion	11:00 Communion or Morning Prayer
2nd Sunday	11:00 Communion	09:30 Communion	09:30 informal Morning Prayer	
3rd Sunday	11:00 Communion	09:30 Communion or Morning prayer	09:30 BCP Matins or Communion	
4th Sunday	11:00 Communion	09:30 Communion		
5th Sunday	11:00 Communion	09:30 Communion		

## Midweek Services

When	Where	What
Tuesday, 10:30	St Mark, Ampfield	Small group Communion in St Mark's room, followed by coffee
Wednesday, 19:00	All Saints, North Baddesley	Communion in a peaceful candle lit space in the midst of your busy week



## Benefice News

### Friends for Lunch - Next date Wednesday 15th May

In April Annie's famous lasagne which was enjoyed by all. This was followed by a delicious Tiramisu made by Victoria. If you'd like to join us please contact Pam on 02380 411146.

Book early - our numbers are rising.



### St. Mark's Stall at the Ampfield Market

Sat 4th May 10am - noon

£52.50 was raised at April's Market, thank you to Pam, Adrienne, Rosea and Agne for your hard work. We are grateful to everyone for their generous donations. If you have anything for the April market please contact Chris or Kate (see p.2 for contact nos.).

**Starts Wednesday 24th April**

**£2 Suggested Donation**

**at St Mark's Church, Ampfield**

**Sunshine Saints**

**Wednesdays in term time  
10:30am - 12noon  
All babies and toddlers welcome!**

 **ACNB CHURCH**  
THE CHURCH OF ENGLAND IN AMPFIELD,  
CHEWORTH AND NORTH BADDESLEY

St Mark's Church, Ampfield  
Romsey, SO51 9BU  
search online for @acnbchurch

# Benefice News

## St. Mark's Fête & Dog Show 11.30am Saturday 8th June

The annual St Mark's Summer Fete and Dog Show is to be held in the grounds of St. Mark's Church, Ampfield on 8th June 2024, starting at 11:30 am. The fete will include all the usual popular attractions - dog show, raffle, games and entertainment, BBQ, teas, beer tent and Pimms stall.

The cake stall will be returning this year. Please can you consider baking your favourite cake, or even two. If you can, it would be very helpful to advise Phil so that we know in advance how many cakes to expect.



The popular plant stall will return. With this in mind, people are kindly asked to consider donating plants, especially flowering plants and vegetables. Most garden centres offer trays of popular flowering plants in plugs, which is a very inexpensive way of buying plants for those who do not have the facilities to grow them. The plant stall is also grateful for any surplus 3" pots.





## ACNB Church – Single Parish Benefice Consultation

**A**s a Benefice, we are constantly seeking out where God is at work, and how we might join in. Our vision as a Ministry team is to provide the environment in which the work and mission of God can flourish – to be a distinctive presence in all our communities that points to the inclusive love of God, freely available to all.

In order for this vision to be effective we have been starting to consider our governance – how do our structures of governance help us to achieve our vision? We have three PCC's in the Benefice – each parish has a PCC made up of representatives of the church. Legally the PCC is responsible for the financial affairs of the church parish and the maintenance of its assets, such as churches and church halls. The principal function of the PCC is to promote in the parish the whole mission of the Church, pastoral, evangelistic, social and ecumenical, and so being a member of the PCC is a significant role, assisting the Incumbent (Vicar) with creating and executing the vision of the church as well as the legal and practical responsibilities around the fabric of our buildings.

As a ministry team, we are beginning to consider what governance structures are best for our Benefice, and we have had some initial meetings with the Archdeacon to look at potentially becoming a single parish benefice. This means that we would have one PCC for the whole Benefice, rather than three. We are considering whether this would help to streamline our governance – the financial and legal decisions would only need to happen in one place, rather than three. With declining congregations, and less availability of volunteers to take on roles, this would free up space and time for the mission and spiritual care.

Cont. ...



...Cont.

However, we need your help to discern if this is the direction God is calling us in! There are a number of documents to read – a number of Benefices have gone down this route already, and we can learn from their experiences. There is a FAQ document provided by the Diocese available for you to read here. We want to assure you that this is purely a governance issue, the service pattern will not change as a result. In terms of finances, it is the management of the finances that would be shared – local needs would continue to be prioritised.

In coming weeks we will have documents and feedback boxes at the back of each church, and do feel free to email comments and questions to [joinin@acnb-church.org](mailto:joinin@acnb-church.org) At a later date, there will be an open meeting to which you will be invited to contribute your comments and questions.

Do please continue to pray for us as a Ministry Team as we seek to discern the way forward for this Benefice.

## **Vanessa and the Ministry Team April 24**



## Benefice News



**INVITE YOU TO A FUN**

# Quiz Night

**and raffle**

**St. Mark's Church Room, SO51 9BU**

**on Friday 3rd May 7.30pm**



**Tickets £5 each including nibbles**



Teams of 6 (can be set up on the night)

Available on line [bit.ly/3PSXnQz](https://bit.ly/3PSXnQz)

(or call 07799 435715)

**Website: [acnb-church.org](http://acnb-church.org)**

## Benefice News



**St Mark's Church Ampfield**  
11.30am to 2.30pm  
Saturday 8<sup>th</sup> June

**CHURCH FETE & DOG SHOW**



 Afternoon tea

 Raffle  BBQ

 Side shows for the children

**In the church grounds and Chapel Wood**

Dog show entries email: [katem@acnb-church.org](mailto:katem@acnb-church.org) £2 per class. All other enquiries email: [sallyk@acnb-church.org](mailto:sallyk@acnb-church.org)

# Benefice News

## Study Course

The Rule of Life is a study course which takes place on a Wednesday evening 7.30pm at All Saints Church and will run for a further 4 weeks - all are welcome.

## Deanery Ascension Day Service

Will be on Thursday 9<sup>th</sup> May at Romsey Abbey 7.30pm. All are welcome, it is a great opportunity to worship with others across the Deanery. There will be refreshments after the service.

## St. John the Baptist Churchyard Tidy-up

It is that time of year to start thinking about organising a working party to tidy up the churchyard after the long Winter months. Therefore Saturday 25<sup>th</sup> May from 2 - 4pm has been allocated and we are hopeful that people will join us in helping with this task (weather permitting) and make a difference to the area.

## Social and Digital Hub

An opportunity to have a go at some crafts, do jigsaws or just relax with a book that has been borrowed from the Community Library (also open on a Wednesday morning) or just sit and chat. There are free drinks and biscuits and sometimes other treats! It continues to be 10am - 12pm every Wednesday at All Saints Church, North Baddesley.

From this coming Wednesday (1st May) we are expanding Wednesday mornings to include some support for those who have laptops, tablets or phones. If you need any advice then please bring them along and hopefully we can be of help. More information next week.

# Benefice News

## Memory Box

During the Social and Digital Hub on this coming Wednesday morning the [Memory Box](#) will be in attendance and they will have another box of interesting items from the past. A time to reminisce!

## Lunchtime Recital St. Denys Chilworth Wednesday 22nd May 1pm

### .Glorious Harmony:

A relaxed choir singing heart-warming meditative 3-part songs. The recitals start at 1pm. For further information please email [office@acnb-church.org](mailto:office@acnb-church.org) or phone [023 8073 7617](tel:02380737617). For dates of future concerts, please keep an eye on our [calendar](#) and [events page](#) on the ACNB website.

## Welcome Café Thursdays at All Saints Church

Thursdays 10am - 12 noon.

An opportunity for everyone, especially those lonely or bereaved to meet.

## Sunshine Saints - All Saints - Fridays 10am - 11.30am

Every Friday we welcome families to the **Sunshine Saints baby and toddler group** in All Saints Church.



The full moon on 23rd. April  
in Ampfield

## Benefice News



We are very excited about our new venture Forest Church, beginning on 19th May. This will be a short relaxed outdoor service, suitable for all ages, with space to engage with faith through nature, and be reminded of the beauty of creation that God provides for us to enjoy. Please dress for the weather - and you may want to bring something to sit on!



## Benefice News




Our *Café Church* is a short informal service, with coffee, tea and cake served before the service. It's available both on-site and online (streamed on our YouTube channel). We look at the same theme as *Messy Church* at All Saints but with a bit less mess (hence our previous name for the this service of *Tidy Church*)! There's an introduction, a reading, a short reflection on the reading, a choice of activity - something to think about, or do, or a Lego challenge, prayer, and songs. It's a chance to meet up and think about a Bible story and about God in an accessible and bite-sized way.



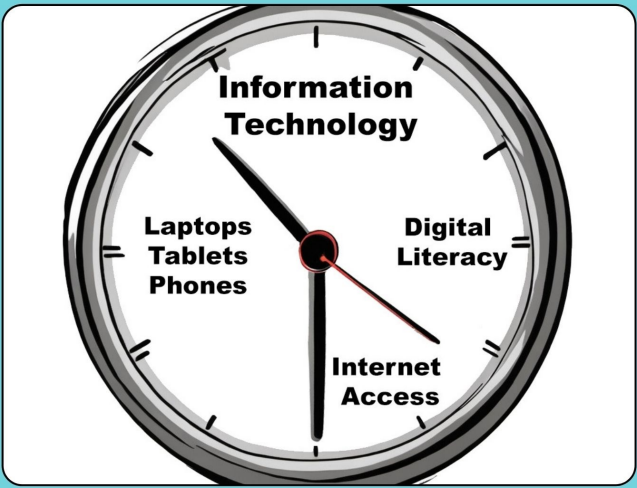
## Benefice News

This Digital Hub will be starting on Wednesday 1st May and is open to everyone who needs help with their digital devices.

Perhaps you would like to help those who come along to the hub asking for support? We are always looking for volunteers, especially if the hub gets very busy! Contact Sally at the office for more details.

**Do you need help with using your Digital Devices?** 


**Time to Learn**



**Wednesday mornings 10.30 - 12 noon  
at All Saints Church, North Baddesley**

£3 including drink and biscuits

for more information  
contact: 02380 737617  
office@acnb-church.org



## Ron and Stella's Quiz Night

1. Who was Henry VIII's first wife?
2. What is the smallest state in America?
3. Kangaroos can only jump forwards. True or False?
4. Saint Andrew, Saint David and St George are three of the Patron Saints of the UK. Can you name the fourth Saint?
5. What is the largest fish in the ocean?
6. What is the longest river in the USA?
7. Which country hosted the 2022 FIFA world cup?
8. How many squares does a chessboard have?
9. How many teeth does an adult human being have?
10. What is the name of the first Disney movie released in 1937?



**Answers on p.**

## The London Marathon 2024



As regular readers of The Messenger will know, the Benefice has been supporting and tracking the progress of Jo Hooper, who has been preparing to run the London Marathon this year. We are delighted to report that Jo completed the marathon on Sunday 21<sup>st</sup> April, in just over 6 hours! As well as wanting to complete this iconic event, Jo also ran to raise funds for the children's charity, the NSPCC. Jo said: "I couldn't believe it when I was offered a place to support this amazing charity, I was super excited and terrified, all in one go! I had never run a marathon

before but was determined to reach the finish line. The months of training were hard, but I had wonderful support from members of my running club, and, on the day my family and friends were there to cheer me on, around the course; it was a truly incredible experience."



Cont....

...Cont.

Jo added, “the fundraising was both remarkable and humbling; people were so generous with their donations and words of encouragement, at times it made me cry, this really has been a huge team effort, culminating in my run on Sunday. If I had to sum the event up in three words, I would say, tough, awesome and amazing. My dad, who is no longer with us, and who was my inspiration, would be so proud.” As we go to press Jo has raised in excess of £3,750, and the total is still rising, so she has smashed her target of £2,200.



Jo only started running a few years ago, using the Couch-to-5k App. She said: "Never in a million years did I think I could be taking part in such a momentous event, I just wanted to get to 5km. Now I am a member of the Halterworth Harriers running club, who have been a huge support with training runs, advice and encouragement. Everyone has been so lovely."

Well done, Jo, we are very proud of you!



**CAN YOU IDENTIFY THIS  
PLANT GROWING IN  
ST. MARK'S GRAVEYARD?**

**CLUE ON P. 20**

# Village News

Dates to save -

**Friday 26th July** - a summer quiz night .

**Saturday 26th October** - Party Night with the Empty Frets providing the entertainment. Come along and join us for an great evening of music, wine, food, fun and dancing !!

**Julie Trotter, Hall Secretary**

‘How to make a Scottish omelette.

First, borrow two eggs ... ’

Spike Milligan (attributed).

**CAN YOU IDENTIFY THIS PLANT?**

**HINT:**

***IT SOUNDS LIKE A DARK CONFINED SPACE AND YOU MIGHT EAT A MEAL.***

**GO TO P. 37 FOR THE SOLUTION.**

# **The Ampfield Market**

**(Established in 2000, now in its 24<sup>th</sup> year !)**

**will take place  
on**

**Saturday May 4th  
From 10am to 12noon  
in Ampfield Village Hall  
(SO51 9BJ)**

Our Market has a great reputation, we regularly sell fresh fruit and veg supplied by Hansards in Awbridge and delicious bread and cakes supplied by Matts Bakery. Honey, preserves, plants and fresh flowers. Cards, wrapping paper and books. Collectables, unusual crafts and jewellery. Clothes, toys and puzzles. Bric a brac, seasonal treats and much much more !

**We serve fresh coffee and a wonderful selection of cakes  
throughout the morning.**

**Come along with friends and family to enjoy this special  
monthly community event.**

Parking and admission are always FREE.

All proceeds support the Village Hall. Registered charity no.  
1057353

Contact Julie on 023 80254587 or [Julie@ampfield.org.uk](mailto:Julie@ampfield.org.uk) for  
table bookings etc.

**Next date: Saturday June 1<sup>st</sup> 2024**

## What happens in the Ampfield Village Hall every month?

### MONDAYS

**PILATES WITH HANNAH** – Two sessions in the morning. Details at [www.pilateswithaplomb.com](http://www.pilateswithaplomb.com)

**AMPFIELD PARISH COUNCIL** regularly meet on a Monday evening for their ordinary meetings, planning meetings and other meetings. Details at [www.Ampfield.org.uk](http://www.Ampfield.org.uk) .

**AMPFIELD CLICKERS** is an informal and friendly bunch of ladies who share their knitting, crocheting and chatting (!) skills etc. normally on the third Monday evening. Contact Jo on 07970 509450.

Email [joannehatley@aol.com](mailto:joannehatley@aol.com)

### TUESDAYS

**AMPFIELD BRIDGE CLUB** playing duplicate bridge. Every Tuesday from 7pm to 10pm. If you require a partner or want more information contact Janet Cox on 07879 915726 or email [janetwallace1@hotmail.co.uk](mailto:janetwallace1@hotmail.co.uk) New members always welcome.

### WEDNESDAYS

**TODDLER SENSE SALISBURY** – two morning sessions. 13 months to 4 years. Call Sian on 07984 051713 or Email: [salisbury@toddlersense.co.uk](mailto:salisbury@toddlersense.co.uk)

**1<sup>st</sup> AMPFIELD BROWNIES** meet every Wed. evening during term time.

6pm to 7.30pm Tel. Sue Moore 01794 523947

**ROMSEY MODELLERS** Build model kits? Join this club on the 1<sup>st</sup> and 3<sup>rd</sup>. Wed. of each month 8pm to 10pm.. [www.romseymodellers.co.uk](http://www.romseymodellers.co.uk)

### THURSDAYS

**YOGA MORNING with Diana Craven** . *Please note that this class for a little while is being covered by the very experienced Gem of Gem Yoga and Wellness. 10.30 to 12.30* Email: [gem@gemyogaandwellness.co.uk](mailto:gem@gemyogaandwellness.co.uk)

**AMPFIELD ART GROUP** meets Thurs. afternoons during term time 2pm to 4pm. Very friendly atmosphere. Beginners and those wishing to develop their skills welcome. Contact email: [Julie@ampfield.org.uk](mailto:Julie@ampfield.org.uk)

**NEW! A NEW SECOND PILATES CLASS** has just started up on Thursday evenings by Hannah Plomb.

For details visit [www.pilateswithaplomb.com](http://www.pilateswithaplomb.com)

### FRIDAYS

**YOGA ON FRIDAY MORNINGS with YogaByGaynor** 9.30 to 10.30am

All levels, Gentle, Vinyasa Flow Yoga. All welcome. Facebook:

@yogaByGaynor OR Email: [yogabygaynor@yahoo.com](mailto:yogabygaynor@yahoo.com)

### SATURDAYS

**VILLAGE MARKET (Established 2000)** The first Saturday of every month 10-12noon (except Jan. and Aug.). Entry free. Interested in renting a table? Tel. Julie on 02380 254587 or email [Julie@ampfield.org.uk](mailto:Julie@ampfield.org.uk).

**CARD MAKING WORKSHOP WITH VANESSA.** Normally on the second Saturday of each month from 10am to 4pm. Details: Vanessa 01794 515490 or email [Ampfielcards@gmail.com](mailto:Ampfielcards@gmail.com) .

**For general enquiries and hall bookings tel. Martin Hatley 07970 501050 Or visit our new website: [www.ampfieldvillagehall.org.uk](http://www.ampfieldvillagehall.org.uk) Or Email: [info@ampfieldvillagehall.org.uk](mailto:info@ampfieldvillagehall.org.uk)**



## Thought for the Month

**W**hy can't it be like the old days? A phrase often quoted by those amongst us of a more mature age. Were they really such good days? Undoubtably it was a quieter, more laidback time, especially the 1950's and 1960's, although the pop music frenzy began quite a step forward. Fish and chips on Friday, washing day on a Monday, bath days maybe once a week (where were all the showers?). Deodorant sales were good though.

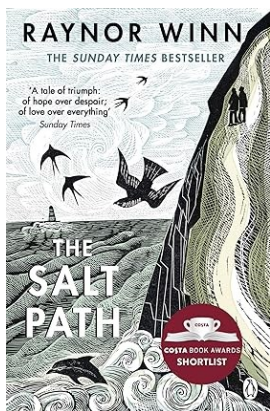
I well remember the small television sets, small amount of channel choices, radio Luxembourg, Dances on a Friday night (no night clubs) paying nearly everywhere with real cash (sometimes cheques) and a pint of beer going up to 10p a pint on 1st January 1971. Cigarettes were 25p a packet of 20 when I stopped smoking in 1973.

Can you imagine a time where people generally had one T.V set, no computers, no internet and heaven forbid, no mobile phone. Young people today would have no idea what it was like not having those things. Population explosion, massive increase in technology have helped push things forward. Alexa. Multiple T.V channels, online shopping, online banking and pretty much online everything have become the norm. We don't even need alarm clocks any more.

All that being said, I would not like to go back, as today's world, although hurtling forward, is much more exciting and generally, more hands on. Even I would hate to be without a mobile phone. Having said that, I would like to see people talking to each other more and not gazing at their phones so much. Its good to talk.

**Ron**





## Book Review **THE SALT PATH** by Raynor Winn

Two weeks ago we stayed in Winchester at our son and daughter-in-law's house to look after their Cocker Spaniel, Nelson. The weather that week was not good with lots of rain and when I found the book "The Salt Path" on the bedside table, I thought "oh good I will read that". I had heard of Raynor Winn, the author of this book, and had seen her several times on television being interviewed.

I could not put the book down, and was amazed and full of admiration for how this couple, who lost their home and everything in it through no fault of their own, before learning that Raynor's husband, Moth, was terminally ill. And yet they made the decision to walk the South West Coastal path (630 miles) with everything they needed in rucksacks on their backs. They loved the outdoors and nature and it seemed the only option for them. The weather they encountered was horrendous at times and they would be soaked to the skin, but each night they erected their tent and carried on, and oh how they enjoyed their cups of tea, usually sharing a teabag! They lived on a very small budget and sometimes just ate rice or noodles or fudge bars.

I found this book to be a beautiful love story; you could feel the love Raynor and Moth have for each other and no matter how they were feeling or what problems arose, they carried on with great hope together. Their journey was inspirational, and the book beautifully written. I am thrilled that she has written two more books to carry on their story; I can't wait to start reading them.

**Jennie Edwards**



is

## A VERY SPECIAL DAY

A beautiful bride  
marries her handsome groom  
A village setting  
enveloped in love  
A young bridesmaid  
having a wonderful time  
An emerald dress  
floats and swirls  
An old church and a  
welcoming vicar  
Close family celebrate  
but warm wishes  
come from far and wide  
and love surrounds this  
very special couple

Lyn



*From the St. Mark's*  
*Register*

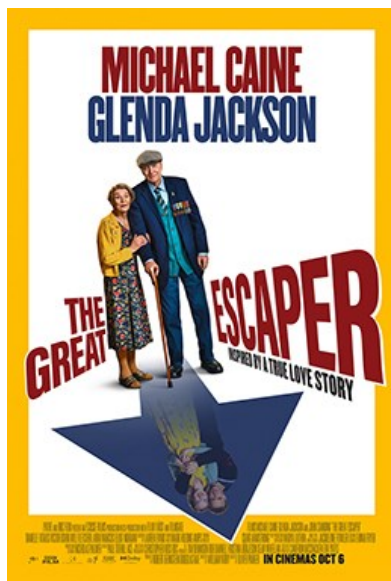


*Lizzie Kerr and Richard Price were married on*  
*9th April*

*We wish them health and happiness*

## THE GREAT ESCAPER

One of the joys of this winter (despite the weather, there have been a few!) has been going to Thornden Hall on occasion to watch films. The most uplifting screening was *The Great Escaper*. It has nothing to do with prisons, but tells the true story of Bernard Jordan, who unable to obtain a ticket for the 70<sup>th</sup> celebration of the D-Day Landings in Normandy, decides to leave his care home in Hove, and travel to the event on his own. He is encouraged to do so by his wife, Rene. Bernard is played by Sir Michael Caine; Rene is played by the great Glenda Jackson.



On one level, the film is a glorious love story. The pair have been married for 70 years. Rene is the more infirm; Bernard was assessed as being fit to live at home but he could not bear to be separated from his wife. It is she who makes it easy for him to make his decision. She covers for him whilst he makes his early morning journey to Dover by taxi. The main motivation for him to return afterwards, by which time the media have tracked him down, was to be reunited with his wife.

Besides the camaraderie, Bernard's main reason for attending the event was to exorcise his demons. As the film progresses, it becomes more evident, aided by a series of flashbacks, that he is still suffering from PTSD, following the death of a friend as he disembarked from their landing craft all those years before. His guilt complex was embedded in his psyche. He is befriended by an ex-officer, played by the equally venerable actor John Standing. He, too, has his demons. He is an alcoholic who lost his brother in the War. As the partnership develops, it is Bernard, an ex-rating, who starts to take the lead.

Cont. ...

...Cont.

It is also a tale of redemption. They go into a café for a drink where they find a group of Germans who have travelled to Normandy. Bernard wants to talk to them. His colleague shrinks from doing so. And likewise, the Germans from talking to their ex-enemies. It is Bernard who breaks the ice. He offers one of them his ticket, which he had now acquired. In a moving moment, the Germans stand to attention and salute him. The café proprietor catches the mood and conveys Bernard and his companion to the War Cemetery in Bayeux, where they find the graves each was seeking. Bernard feels that his mission has been accomplished and starts on his way home. The pair bid each other a fond farewell with a man hug. The gap in status and class has melted away. Bernard is recognised on the ferry, and is royally feted and dined, and then greeted warmly by the home's staff. He and Rene, who, despite her support, had been ailing during his absence, embrace.

In the final footage, the couple take a walk along the sea front. Bernard retains his sense of mischief; he feels a group of cyclists are being too noisy. With their backs turned, he lets down the tyres of one of their bicycles.

Michael Caine, after all those years since his appearance in *Alfie* still retains a commanding on-screen presence. However, the eternal memory will be of Glenda Jackson. Aged 87, with a heavily lined, drawn, face, and clearly ill, her performance is irresistible. Many will remember her appearances as Queen Elizabeth R in a tv series in the early 70's, and as Gudrun Brangwen in DH Lawrence's *Women in Love* a few years earlier, but posterity may regard her performance in this film as her best ever.

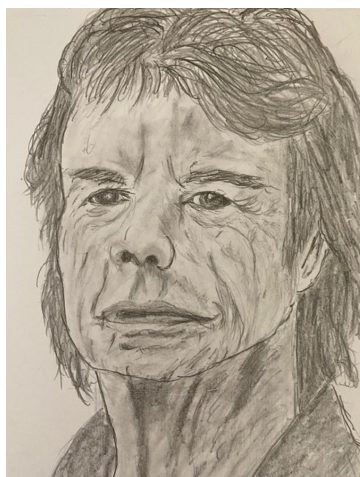
The film was never sentimental but there was an uncanny symmetry codicil. It was Michael Caine's last film. He retired from acting at the age of 90. Glenda Jackson died before seeing the final cut of the film. Bernard Jordan passed away three months after returning from Normandy. Rene followed him a week later.

**Alan Edwards**

## Ampfield Art Class Gallery



Reflections at the  
Vyne -  
Andy,  
watercolour.



.A portrait of Mick -  
David , pencil.



.Corfe Castle - Frank, pen and  
Watercolour.



# Ampfield Art Class Gallery



Autumn  
landscape -  
Nick,  
watercolour.



Waiting at the station -  
Carle, watercolour.



Sunrise over the shore - Sharon, oils.

**Julie Trotter's Art Class takes place  
on  
Thursday afternoons  
from  
2-4pm at the Village Hall**



# Friends of Chapel Wood

By Graham Roads

Originally, the idea was to have a bonfire during our April working party, but a chance meeting led to a change of plan. While walking through the wood, we were reminded just how environmentally friendly our natural hedge was believed to be. In light of this, it seemed odd that we should want to burn the various piles of arisings scattered around the bonfire area when we had gaps in the hedge that would benefit from filling.

As it happened, this month we had fewer than usual volunteers available, too few to set up a bonfire comfortably, so we decided that the hedge was the more sensible option. The first thing we had to do was to find some wooden posts which would keep the foliage in place. We had a few available from past activities but we still needed to find some more. We had already put coppicing holly on a future agenda, combining this with hedge building seemed a very



good option; so armed with no more than a saw, we set off to look.

After careful selection, we had the posts we needed in position so could now start to infill with the rhododendron arisings, cut during the previous work party. It is really surprising just how far a couple of piles of cuttings will go and just how quickly they will

collapse afterwards.

Cont. ...

...Cont.

However, the result is often spectacular. It is easy to forget how attractive open space in the woodland is and how easily it can be taken for granted.



Meanwhile, in the burial ground we needed to tidy up after tree surgeons had removed the split tree and ground out the roots. This also gave us the opportunity to get rid of a number of semi-rotted posts, which had been protecting the old box hedge. It has made a big difference to the

look of the area. We can now decide whether we want to plant two replacement trees, and what species they should be.

The Friends of Chapel Wood is a group of keen volunteers who look after Chapel Wood, the Ampfield community wood that surrounds St. Mark's church. New recruits are always welcomed, so if you fancy the idea of joining some like-minded neighbours for a few hours once a month, just turn up in the St. Mark's car park at 09:45 on the second Saturday of every month. Cakes are normally provided, simply bring your own tea or coffee.



**Graham Roads**

# Elephants in Church

by Liz Hallett



A famous elephant  
At Denston

Last month we looked at camels, this month elephants - another unlikely feature of old churches. No carver in the UK had seen an elephant until one was given to Henry III in 1255. It spent several years in the menagerie in the Tower and after that some elephant carvings became a bit more realistic. The earlier examples are charming. Apart from the fact that an elephant has a trunk and tusks, little was known, so some trunks are

enormous as on the Muchelney tile while others are almost non-existent, as at Carlisle. Tusks, where they are shown at all, often resemble those of a wild boar. The feet and ears vary enormously too. The Cashel elephant even appears to be feathered.

Almost all elephants are recognisable because they have a castle on their backs. This was because the Bestiaries recorded that Indians and Persians fought each other from these towers. It was believed that the

elephant was unable to bend its knees, so it had to sleep leaning against a tree. The huntsman would partially cut through the trunk which would then collapse causing the elephant to fall helpless to the ground.



Cashel. Ireland.  
More like a boar  
Than an elephant  
And what a huge  
castle topped by



Medieval floor tile at  
Muchelney

Cont. ...

...Cont.

**T**he other 12 elephants of the herd (the Law) could not raise him, but a tiny elephant (Christ) lifted the fallen animal easily, so the symbol here is of Salvation. The elephant was also believed to be relatively uninterested in sex, so is a symbol of Chastity (the Virgin Mary), but when it does give birth it



does so in water (a symbol of Baptism) to protect the baby from a fierce dragon. So, we have several things to learn from this creature.

Carlisle Cathedral, a virtually trunkless Elephant (behind) fighting a dragon

Enjoy some of the elephants we have discovered.



One of four galloping Elephants at Burwell



Chester Cathedral  
Elephant and castle



**Liz Hallett**



## FROM THE ARCHIVES 1954

### ALTAR SERVERS

I. T. CAWTE, M. H. FUSSELL, C. E. HAPPE, D. E. SLADE.

### BELL RINGERS

J. PACK, N. A. BETTRIDGE, P. DOWN, J. EARLE, C. B. HEMSTRITCH  
D. E. SLADE, D. S. BETTRIDGE, B. BARTER, C. JONES.

---

The COUNTY LIBRARY is open at 3.45 p.m. every Wednesday during term time at Ampfield School.

---

There is a Ministry of Food WELFARE FOOD CENTRE at EARLES MEAD, opposite the Church (Tel. Braishfield 336). National Dried Milk (Full Cream), Cod-Liver Oil, orange juice and vitamin tablets are obtainable any week-day when anyone is at home (which is nearly always).

---

Will local organisers, secretaries and correspondents please send to the Vicar by the 16th of each month information, notices, or reports to be included in the next month's Messenger?

## FROM THE ARCHIVES MAY 1977

### AMPFIELD PARISH COUNCIL

At the March meeting the Chairman, Miss Joan Cornwell, stated that consultation with the Hampshire Association of Parish Councils had reassured her that it was quite legal for the money in the Ampfield Parish Committee Fund to be used for the forthcoming Silver Jubilee. It was proposed that this should be used for some form of village commemoration, to be decided after discussion at the forthcoming Parish Assembly. (See announcement below). Mr. White stated that the recently held dance and social have raised approximately £120, and that draw tickets are now on sale. Almost 350 crowns are to be purchased for all the children under sixteen years of age in the parish.

Concern was expressed over the threatened closure of Ampfield school in July 1978. The Chairman read a letter sent out to the parents by the school managers. This stated that the Education Minister advises the closure of schools with less than 50 pupils, Ampfield falling well into this section. Also the school roof needs retiling, and it has been estimated that this could cost £11,000. A parent's committee has been formed, objecting to the closure, and the parish council unanimously agreed to support that committee.

It was stated that part of footpath No. 11 had been ploughed up, past recognition, in a field to the west of Knapp Lane. Dr. Machell, the newly appointed footpath representative, agreed to look into this. A complaint was also received on the amount of rotting garden waste in Baddesley woods, and this appears to be coming from the gardens of nearby residents. After last summer's drought the grass at the War Memorial garden has died. Mr. Faber kindly offered to supply new turves from his land and arrange for them to be laid.

Remember - THE ANNUAL PARISH ASSEMBLY WILL BE HELD AT  
THE SCHOOL, AMPFIELD, ON THURSDAY, 12th MAY at 7.30 p.m.

ALL PARISHIONERS ARE INVITED TO ATTEND

- - - - -

## *A Prayer for Pentecost*



Holy Spirit, sent by the Father,  
ignite in us your holy fire;  
strengthen your children with the gift of faith,  
revive your Church with the breath of love,  
and renew the face of the earth,  
through Jesus Christ our Lord.

**Amen**





## Answers to Ron & Stella's Quiz Night

1. Catherine of Aragon
2. Rhode Island
3. False
4. Saint Patrick
5. Whale Shark
6. The Missouri River
7. Qatar
8. 64
9. 32
10. Snow White

\*\*\*\*\*

### ANSWER TO IDENTIFY THE PLANT IN ST. MARK'S CHURCHYARD:

IT IS THE LESSER CELANDINE ( *RANUNCULUS FIGARIA*) – LOW GROWING  
HEART-SHAPED LEAVES. THE FLOWERS ARE GLOSSY YELLOW, USUALLY WITH  
8 – 12 PETALS THAT APPEAR MARCH – APRIL. FOUND MOSTLY IN SHADY  
DAMP PLACES AROUND GRAVES.

ANON.



## Rotas for St. Mark's in April

Date	1 <sup>st</sup> Reading	2 <sup>nd</sup> Reading	Intercessions	Sides	Coffee	Music
Sun 5th May 9.30	Tidy Church				Doreen	Mark & Abbie
Sun 12th May 9.30	Acts 1: 15 - 17, 21 - 26 Robyn	1 John 5 9 - 13 Heather C	Ron	Phil Sally C	Jennie E	Organist
Sun 19th May 9.30	Acts 2 1 - 21 Mark B	Romans 8 22 27 Heather S	Rob	Robyn Ron	Chris Cathy	Jean
Sun 26th May 9.30	Isaiah 6 1 - 8 Jennie E	Romans 8 12 - 17	Sally K	Mark B Stephen	Heather C	Organist

**Flowers: Diane**



## CONTRIBUTIONS and CONTENT

**DONATIONS** may be payable by cheque, please post to:

Attn. Adrienne, All Saints Church, Church Close, North Baddesley  
SO52 9EQ made out to **Ampfield PCC** and on the reverse please  
specify: 'THE MESSENGER MAGAZINE'.

Or paid directly:

Sort code: 30-92-94 Account No: 01254722

Account Name: St Marks Church PCC / Reference: Magazine

### ADVERTISING

Please send to: **Kate McCallum** at [Kathleen.mccallum@icloud.com](mailto:Kathleen.mccallum@icloud.com)

Application for designs and rates for both commercial and charity advertisements will be agreed before submitting copy/drafts for inclusion as JPEGs in high resolution not PDFs or for any graphic design work that you may require to be published. The quality, copyright and content are the sole and legal responsibility of the advertiser.

The views expressed by contributors are not necessarily those of Editors or PCCs nor will they accept any liability for such. They are not responsible for any of the views, statements or opinions expressed in the contributions and any reliance placed on them by the reader is at the readers sole risk.

Copyright is the legal responsibility of the contributor and not that of the editors or PCC with regard to any content. Advertisements are not endorsed or guaranteed on any product or services referred to in, or the content of, such contributions. Every care is taken on content, but possibly there could be cause for misunderstanding that was not intended.

### **AMPFIELD PARISH COUNCIL**

**Kate Orange - Clerk to Council**

2 The Square

Braishfield Road, Braishfield

Romsey SO51 0PQ

**Tel: 07922 118840**

**email: [clerk@ampfield.org.uk](mailto:clerk@ampfield.org.uk)**

**[www.ampfield.org.uk](http://www.ampfield.org.uk)**

# Simplify your life with our top-rated service

UW is the only home services provider to bundle everything onto one, simple, monthly bill. That includes gas, electricity, broadband, landline, mobile and insurance.

**And because we're Which? Utilities Brand of the Year 2020, you know you'll be in good hands.**



My name is Natalie and I help people save money on their boring old bills - for FREE. You may not have heard of Utility Warehouse before - but we've actually been around for over 24 years! We are a multi award winning British company with award winning customer service and a UK call centre.

**Find out more...Natalie Day**  
**natalie@dropintheocean.co.uk 07887602483**

Here for all of your grave care needs



## *The Graveside Sisters*

Head stone cleaning, Letter re-painting  
Weeding, Tidying and General care.

Tel 07810111592 or 07810810476

Email... Emma@thegravesidesisters.com

Visit.. Wwww.thegravesidesisters.com

Facebook.. Wwww.facebook.com/TheGraveSideSisters

# NIGEL GUILDER and family

## FAMILY OWNED FUNERAL DIRECTORS

Nathan House, 27 Hursley Road, Chandler's Ford, SO53 2FS



**Nigel Guilder Dip FDMBIFD**

**Lucy Guilder Dip FD MBIFD**

**John Firth Dip FD MBFID**

24 HOUR PERSONAL SERVICE

**02380 262 555**

**[www.nigelguilder.co.uk](http://www.nigelguilder.co.uk)**

Pre-paid Funeral Plans Available



**Blackwell & Moody Ltd.**

Monumental Masons and  
Restoration Specialists

**Jeffrey Higgins**

Magdalen Masonry Works,  
Alresford Road, Winchester,  
Hampshire. SO21 1HE

Tel: 01962 852 476

Fax: 01962 850 865

Email: [blackwellandmoody@gmail.com](mailto:blackwellandmoody@gmail.com)



**Over 100 years  
of service  
to the local  
community**



**The Family  
Owned Funeral  
Directors**

The Peace  
family have  
proudly served  
Romsey and  
the surrounding  
area for three  
generations.



**Experienced and Flexible**

Honesty, integrity and transparency are at  
the heart of our beliefs.

We understand every funeral is unique.

**Modern Professional Facilities**

Our premises have complete facilities on site  
and our dedicated team are available  
to support you 24 hours a day.

**[www.ahcheater.co.uk](http://www.ahcheater.co.uk)**

**ROMSEY**  
01794 513393

**NORTH BADDESLEY**  
02382 358860

**AVAILABLE 24 HOURS**

Computer Problems?	
	PC, Mac, iPads, Screens Windows XP 10 & add Menus Virus Fixes & Tune up Data recovery, Printing Broadband & Networking
Independent Impartial Advice Home Visits	
Laptops, Macs & Phones	PC's, viruses, Home setups
<b>Call Colin:</b> 01962 713890 07727 481220	<b>Call Gerry:</b> 01962 712674 07900 845814
10% off labour with Parish Magazine over	

**AMPFIELD to ROMSEY  
DIAL A RIDE**

A transport service for disabled or elderly people who cannot use ordinary buses. We provide a door to door service using specially adapted vehicles, for shopping trips and other individual transport needs.

**Tel: 01264 356808**  
**www.tvcs.org.uk**

\*\*\*\*\*

\* **Good Roots Garden Services** \*

\* I have 20 years experience in horticulture and specialise in garden maintenance, small landscaping & repair works' I can either work with you to improve your outside space or offer a 'spruce up' service. \*

\* Please get in touch so I can come and chat with you about what your garden needs with a free, no-obligation visit. \*

\* 07749 299227 \*

\* Tel. Pete Hale on :07749299227 or email [pete@goodrootsgardening.co.uk](mailto:pete@goodrootsgardening.co.uk) \*

\* \*\*\*\*\*



## Talk to us

If things are getting to you. Any time you like, in your own way - about whatever is on your mind.

- Free to phone 116 123

Email: [jo@samaritans.org](mailto:jo@samaritans.org)

- Visit us: 13 Upper High Street, Winchester SO23 8UT





**JO HOOPER**

HONS) RNMH REG.  
MBACP

**Counsellor, Psychotherapist, Coach**

Currently working online

[counselling@jlhooper.co.uk](mailto:counselling@jlhooper.co.uk)

<https://www.paranimo.co.uk/therapists/jo-hooper/profile>

*(click link for my video)*

023 8097 2243

WORKING WITH YOUR EMOTIONS, THOUGHTS  
AND FEELINGS

**CONTACT ME FOR AN INFORMAL CHAT TODAY**

