

STADHAMPTON ❄️ CHISELHAMPTON ❄️ NEWINGTON

Village Voice

December 2023 - January 2024

TAYLORS SERVICES

Extensions . Refurbishments

Kitchens . Bathrooms

Carpentry . Plumbing & Heating

Electrical . Solar PV

General Repairs & Maintenance

Landscaping . Fencing . Tiling

Roofing

01865 876004

www.taylors-services.co.uk





Woodcrafts
— OF OXFORD —
est. 1985

**Transform your home with
craftsmen built solutions**

E: mike@woodcraftsoxford.co.uk

T: 07800 731917

Chalgrove Based



STEVE WASHINGTON

Plumbing

Heating

Leadwork Specialist

Free Estimates given

T: 01865 873577

M: 07759 781 794

OXFORDSHIRE FENCING GROUP

All types of fencing
and gate work
undertaken

Free no obligation
quotes

Jack Sherwood

Wheatley, Oxford

Call: 07595 910559

Jacksherwood2008@hotmail.co.uk



A CLOSE FAMILY

The Close Care Home offers long term, short stay convalescent, respite and specialist care.

Situated close to Oxford and the picturesque market towns of Abingdon and Wallingford.

The Close is in the perfect location for a relaxing and sophisticated stay.



C THE CLOSE

01865 407343
theclosecarehome.co.uk



Wheatley Painters

Interior & Exterior painting and home repairs.

If it has a surface, then
we can paint it!

Info@wheatleypainter.co.uk

Free quote next working day!

07456816763

www.wheatleypainter.co.uk

A trusted locally-based family business, providing painting and decorating, as well as home-repair services, plastering, refurbishment and silicone rendering, to customers across Oxfordshire.



**Waterperry
Gardens**

CHRISTMAS AT WATERPERRY GARDENS

Trees and wreaths for sale. Fabulous gifts and decorations in our Christmas shop.

CHRISTMAS MARKET

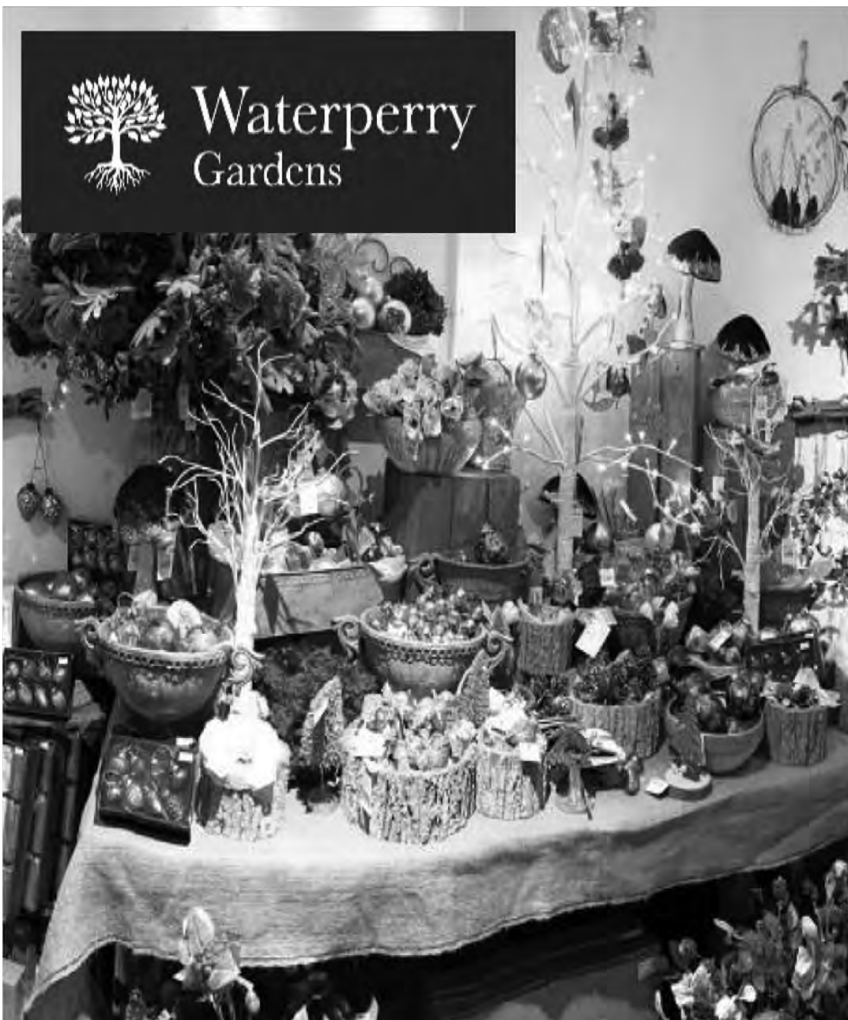
9th & 10th December
10 am-4 pm.

We have lots of local artisan traders selling gifts for all. Hot food and mulle wine are available. The tea shop will be selling delicious homemade food and taking orders for their Christmas puddings and cakes.

CHILDREN'S REINDEER TRAIL

25th November - 24th December.

Closed 25th December to 1st January
2024 Inclusive



CALL OUT PLUMBING

PLUMBING HEATING

TAPWASHERS & PLUMBING

Repairs • Installations

BOILERS, COOKERS, GASFIRES

Serviced • Repaired • Replaced

CENTRAL HEATING SYSTEMS

Installations • Cleansing • Servicing

FULL BATHROOM INSTALLATIONS

UNDERFLOOR HEATING

EMERGENCY REPAIRS

Best Prices, Service and Reliability



LEE BECKETT

**01491 614233 or
07773 168120**

Calloutplumbing.co.uk

STEVE WILKINSON & SON PROPERTY MAINTENANCE

- **PAINTING**
Interior & Exterior
- **PLASTERING**
- **REPOINTING**
Brick & Stone
- **PATIO'S**
- **FENCING**

TEL: 01865 891554

MOB : 07885 538514

Manor Café at Howbery

Open: 9am-4pm, Mon-Fri



Order online or at service counter
Outside and indoor seating areas
Takeaway service | Ample parking
Beautiful grounds.

www.howberypark.com

- ☛ Hot and cold drinks,
homemade cakes: all day
- ☛ Breakfast: 9.00am - 10.30am
- ☛ Paninis, baguettes and
baps: 11.00am - 2.00pm
- ☛ Hot and cold lunch options:
11.30am - 1.30pm



Formerly The Crazy Bear Farm Shop, we have rebranded as The Wild Pig.
So come and visit us for some Christmas inspiration!

CHRISTMAS TURKEYS £19.99kg

Our most succulent free-range bronze turkeys are orchard-reared in The Cotswolds and include cooking instructions and a complimentary thermometer

CHRISTMAS HAMPERS

Pre-order your Christmas dinner with all the trimmings!

For collection 22nd, 23rd, 24th December

Or create a bespoke gift hamper for your foodie friends

CHRISTMAS GIFTS

Browse our new luxury dog gifts by Stocky & Dee, our festive Cartwright & Butler range, Pure wool sheepskins, Alpaca wool socks, Tableware from our local wood turner, British cheeses & charcuterie, Champagnes, wines, spirits, and much more...

CHRISTMAS TREES £50

Our AI non-drop Nordmann trees and festive wreaths are available now

Happy Christmas!

Newells Lane, Stadhampton, Oxfordshire OX44 7XJ

T: 01865 893977 E: farmshop@thewildpig.com

www.thewildpig.com



Morland House Surgery, Morland Close, Wheatley OX33 1DP

The usual surgery opening hours are Monday to Friday 8am to 6.30pm
Saturday mornings (excluding Bank Holiday weekends) 8am to 10.30am,
for **prebooked** telephone consultations only

Enhanced access hours are offered outside these times, please speak to
one of the reception team on 01865 872448 for more information.

When the surgery is closed, please contact the Out of Hours service by
phoning 111

Dispensary is open during these hours:

Monday to Thursday 8.30am to 1.00pm, Friday 8.30am to 1pm and 2pm
to 6.30pm

Dispensary is closed on Saturday morning.



DIRTY CARPETS, UPHOLSTERY, RUGS

**Most carpets dry within the hour
Unbeatable Results & Competitive Rates
Call**

GRIMEBUSTERS

www.grimebusters.co.uk 01865 726983 01235 555533



MSM Electrical

Full Rewires
Extensions
Extra Sockets & Lights
Garden Lighting & Power
Electrical Vehicle Charging Points
Small jobs welcome

**REGISTERED PART P
LANDLORDS CERTIFICATES**

Contact Martin Shaw
07860 795605 / 01865 872681
msmelectrical61@gmail.com



The Lighthouse



Montessori Nursery providing loving caring childcare
Open 50 weeks a year

Extended days available 8.30am to 5.00 pm.

Large outside space and field

Nursery Funding accepted

In converted barn in countryside between Newington & Stadhampton
on A329 with easy access to Abingdon, Didcot, Henley, M40, Oxford, Thame,
Wallingford and Watlington

01865 891712 Sally@LighthouseNurserySchool.co.uk
www.lighthouseNurserySchool.co.uk



Window Cleaning Services

M. FRY

**Domestic & Commercial Window
Cleaning & Gutter Maintenance**

Fully Insured

**Member of the Federation of
Master Window Cleaners**

**1 Old London Road ,Wheatley,
Oxford OX33 1YW**

E: michael.fry4@btopenworld.com

MOBILE: 07887 515168

Sarah Massey

*Experienced local
garden designer*



**SOCIETY OF
GARDEN
DESIGNERS**

REGISTERED MEMBER



01865 400091

www.sarahmassey.co.uk

LOOKING FOR THE RIGHT PLACE FOR YOUR BUSINESS?

Where people and the planet matter.



Serviced Offices | Business Units | Meeting Rooms | Hot Desks | Virtual Support



Monument Park, Chalgrove OX44 7RW

01865 893200 | hello@jennings.co.uk | jennings.co.uk



Grant & Stone

The only trade account you'll ever need!

**SERVICE, PRODUCTS,
KNOWLEDGE, LOCAL
& INDEPENDENT**




✓ **Competitive Prices** ✓ **Comprehensive Range** ✓ **Experienced Teams**

Get all the **BUILDING, PLUMBING, and ELECTRICAL SUPPLIES** you need, with unbeatable customer service and competitive prices from your local Grant & Stone branches in Oxford

Find your local branch details

GRANTANDSTONE.CO.UK

Grant & Stone Ltd. Terms & Conditions apply.



An enormous **THANK YOU** to all the volunteers in our community who give up their time and effort to hold our surroundings and services together and endeavour to create a better world

VILLAGE VOICE ADVERTISEMENT RATES

Proportion of Page	Size of commercial advertisement	Price per issue
1/8	44mm deep x 61mm wide (no logos)	£4
1/4	91mm x 61mm	£8
1/2	91mm x 124.5mm	£16
1 full page	186mm x 124.5mm	£32

Adverts - We try and support publication costs by charging businesses for advertising. Buy a full year of advertising and get 10% off!

Flyers - delivery only. £20 flat rate. Flyers go out with the magazine and need to be with our distributors in time.

Deadlines - Please send files to stadhampton.vv@gmail.com by the 15th of the month. If you need any free help with artwork please contact Keith Hodges (printer) at Colourplus on 01865 890271 or at print@colourplus.co.uk.

Publishing dates - There are ten issues a year. Published monthly with two exceptions; July/August and December/January are double issues.

Notices - for village/community groups and events are free of charge. Other organisations at Editors discretion.

Personal announcements - about births, weddings, anniversaries or adverts for items for sale, wanted or "free to a good home" are free of charge to our community.

email: **Stadhampton.vv@gmail.com** **tel:** **891187**

Disclaimer—The views and opinions expressed in the articles published in the magazine do not necessarily reflect the views of the Editor or Publisher - Stadhampton Parochial Church Council. All articles submitted for publication are subject to editing.

Talking point by Rev'd Jane Willis

As I write it's not quite Advent, but Christmas lights are already appearing everywhere.

Christmas in the northern hemisphere comes at the darkest time of the year - with short days and long nights. Christmas lights are beautiful and decorative - but arriving home on a dark evening the first thing we will reach out for is the light switch. We will need that light for us to be able to do pretty much anything.

Our Christmas lights are symbolic of the one true light who has come into the world - and a world which seems to be becoming increasingly dark. In the epilogue to his gospel, John writes of Jesus: *'The true light that gives light to everyone was coming into the world.'* (John 1:9) Jesus himself declared, *'I am the light of the world. Whoever follows me will never walk in darkness, but will have the light of life.'* (John 8:12)

What does that mean? As a confused and rebellious teenager, my experience of coming to faith in Christ was like the light being turned on a dark room. By that light we can see God. Jesus is Emmanuel: 'God with us'. By that light we can also see the world better - in all its beauty and brokenness. CS Lewis wrote 'I believe in Christianity as I believe that the sun has risen: not only because I see it, but because by it I see everything else.' We see ourselves better: as beloved children of God, and yet falling so far short of his glory. Which leads us from the manger to the cross - Christ has come to be our saviour, taking upon himself the sins, the brokenness of the world. When Jesus died on the cross, darkness fell over the land (Matthew 27:45). The Light of the world descended into darkness in order to bring us into God's wonderful light. This is God's gift to us, which we celebrate at Christmas.

*The people walking in darkness
have seen a great light;
on those living in the land of deep darkness
a light has dawned...*

*⁶ For to us a child is born,
to us a son is given,
and the government will be on his shoulders.
And he will be called
Wonderful Counsellor, Mighty God,
Everlasting Father, Prince of Peace.*

*⁷ Of the greatness of his government and peace
there will be no end.*

So this is to offer the warmest invitation to any of our Christmas services and events across the Dorchester Team. There will be candles and fairy lights... But above all else may we discover or rediscover the wonder of light of Christ, in our world and in our lives.

Every blessing for Christmas and the New Year

Jane

Team Rector for the Dorchester Team

Events in the Abbey

Sat 2nd December, 10:00 am – 5:00 pm Dorchester Abbey Christmas Market Come and enjoy our lovely Christmas Market in the beautiful surroundings of Dorchester Abbey. Loads of stalls full of gifts and Christmas food, with wreaths to order or take away, all surrounded by the smell of bratwurst and mulled wine and Christmas music. As always, the highlight of the Market is the Tea Room stall packed full of home made Christmas cakes and food to take away!

Sunday 3rd December-7.30pm to 9.30pm A Jazzy Christmas at Dorchester Abbey with Jo Harrop and Paul Edis- A feast of festive favourites and jazzy Christmas classics performed by singer Jo Harrop and pianist Paul Edis alongside a world class nine-piece band. £22 - £27. Tickets online from Eventbrite

Monday 4th December- Church Conservation Trust- 7pm-9pm Gregoriana Concert- Join the Churches Conservation Trust for a festive evening, and a glass of wine in the breath taking surroundings of Dorchester Abbey, before listening to a performance from the Gregoriana choir. Tickets start from £17.50 per person and include a wine reception. All proceeds from this event will go towards supporting vital roof repair work to the nearby St Bartholomew's Church in Lower Basildon. Tickets can be purchased from: www.visitchurches.org.uk/DorchesterAbbeyChoir

Saturday 9 th December- 7:00 pm – 9:30 pm OSJ- Britten Saint Nicolas Cantata- Written in 1948, Britten's captivating Cantata conjures the adventures of St Nicholas, depicting the exploits, magic and miracles of this most beloved character. With its inclusion of popular hymns, OSJ Voices will join together with the audience to raise the roof in song, ensuring that the Christmas gift of music is delivered in perfect harmony. We start with a Sequence of Carols orchestrated by Jeremy Lubbock. Free tickets available for NHS workers and for the disabled. Please email admin@osj.org.uk. Tickets £5 to £30 from www.osj.org.uk

Thursday 14th December- 6pm- 9.30pm- The Coming of Christmas 2023 Home Farm Trust- Hft's festive celebration event, The Coming of Christmas, returns on Thursday 14th December for its 27th year, in the historic setting of Dorchester Abbey, Dorchester-on-Thames. See the historic Abbey bathed in the glow of candles and Christmas lights at this special evening of festive music and readings. Featuring: The Donaghue Choir and guest speakers. Tickets £20 to include a programme and festive refreshments. Or treat yourself to an extra special experience with a VIP ticket: enjoy pre-reserved priority seating and VIP refreshments. www.hft.org.uk/coming-of-christmas

Saturday 16th December- 7:00 pm – 9:30 pm OSJ- Handel Messiah- Christmas wouldn't be complete without Handel's great oratorio. This seasonal classic will be performed by renowned soloists and backed by the full forces of the Orchestra of St John's and OSJ Voices. Free tickets available for NHS workers and for the disabled. Please email admin@osj.org.uk. Tickets £5 to £30 from www.osj.org.uk

Wednesday 20th December- 7:00 pm – 9:00 pm- Nadia Eide – Winter Light-Soprano- A Classical Christmas Concert. This truly is a show for the whole family, featuring well-loved classic songs sure to bring the festive cheer! Tickets £25 (£20 concessions) Tickets online from Eventbrite

Sunday 31st December- 6pm- 8pm OSJ New Years Eve Concert - Get ready with the fizz! We welcome in 2024 with our ever-popular New Year's Eve concert – a highlight of our orchestral year. Full of toe-tapping favourites, this much-loved event with orchestra and choir is always a delightful way to usher in the New Year. Free tickets available for NHS workers and for the disabled. Please email admin@osj.org.uk. Tickets £5 to £30 from www.osj.org.uk

TEAM EVENTS

Sat 9 th Dec- Time TBC (AM) Berinsfield Church – Experience Christmas – A free event, suitable for all ages. Pet the live animals in the stables and enjoy a photobooth.

Stadhampton Carol Service



at St John the Baptist Church

Sunday 17 December, 6pm

ALL WELCOME

with refreshments served
after the service



livewell.oxfordshire.gov.uk

Live Well Oxfordshire has been developed by Oxfordshire County Council in partnership with Age UK Oxfordshire.

The directory has been designed to bring together information about groups and organisations offering services for adults with a variety of needs in one place.

You can search the directory to find information about services to help you live independently such as home care agencies, or organisations that can help with shopping or gardening. It also includes information about care homes and health services such as GPs or dentists.

You can also use Live Well Oxfordshire to look for a new hobby, find out where you can get information about benefits, or support groups for people with health conditions.

As a member of the public, you can easily save shortlists of services you are interested in. You can also leave feedback for us about any services you have used; this will not be published but will be passed on to the service provider.

As a Provider, you can advertise your services free of charge on the site to members of the public, local authority practitioners and other professionals.



Christmas Fayre

Stadhampton Village Hall

Saturday 2 December, 12pm (until 4)

A wonderful opportunity to catch up with friends
and neighbours in St John's Church Hall

Sue's Knit & Gifts

Hello Possum UK

Beth's Wishes

Sue Made This

**No.4 Children's Clothing
& Toys**

Porch Preserves


Bunnies Buntinz Body Shop @ Home

Lucky Dip

Memories Re-Stitched

Anna's Bears & Bits, and more...

Coffee, tea, mulled wine, cake, biscuits



Stadhampton Parish Council

Alternate Parish Council meetings have a limited agenda with a focus on planning applications. Therefore these are subject to cancellation. The next planning focus meetings will be held on Monday 18th December, and Monday 19th February 2024. The next full-agenda meeting will be on Monday 15th January 2024. There remains a vacancy on the Parish Council and if you are interested in this role, please get in touch with the Parish Clerk at clerk@stadhampton.org

Meetings usually commence promptly at 7.30pm in the Village Hall, St John the Baptist Church, and the agenda will be published on the website on the Wednesday prior to the meeting, and added to the notice boards as soon as possible afterwards. Residents are warmly invited to attend the monthly meetings, details of which are on the website www.stadhampton.org Every meeting includes a short public participation time at the start if you wish to raise any issue of Parish Council business.

Planning and licensing applications:

Details of all applications can be viewed by searching for the property or application reference using the planning tabs at <https://www.southoxon.gov.uk/>

In November the current application for the Parish is:

Newells Farm Shop Stadhampton OX44 7XJ application P23/S3697/LDE for a certificate of lawful development for a single-storey building in connection with established Class E use. This item is not open for comment, but relevant information can be submitted to the planning authority

Recent decisions on planning applications:

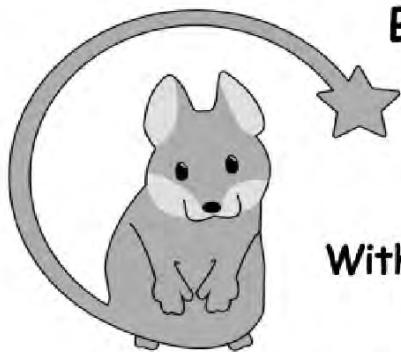
Wheatfield, Copson Lane Stadhampton OX44 7TZ application P23/S3018/S73 for Removal of condition 3 (occupation by agricultural worker etc only) of planning permission P73/M0767 (Erection of agricultural worker's bungalow access). Permission granted 01/11/23

Bev Field, Parish Clerk for Stadhampton Parish Council

Mobile: 07717 134606

Sports Pavilion, The Green, Stadhampton. OX44 7UL

Web: www.stadhampton.org Twitter: @StadhamptonPC



Beth's Wishes Foundation

presents...

WINTER SONGS

**With local A Cappella singers Shiraz
and community singing**



The Village Hall St John's

Sunday 10 December 2023, 7pm to 9pm

Tickets £10 (free for under-16s)
to include a drink & a delicious home-made mince pie
Further refreshments, with cheese & biscuits, will be available
for an additional voluntary donation

All proceeds donated to Beth's Wishes Foundation (charity number: 1190380)

See flyer for further details

SUDOKU

Answer p30

9				1				
		5	9	8				
	2				5		9	7
	6			7				
4	9		1					
		8				3	2	1
				1			5	3
		7		9		2		4
		4		2		8	1	

Carols by Candlelight

at St Katherine's,

Chiselhampton

Friday 22 December,

7pm

followed by refreshments

Please follow the signs for parking

We look forward to seeing you there!!

All enquiries please contact Stephen -07729 902427

s.dawson78@yahoo.co.uk

STADHAMPTON & CHISELHAMPTON 200 CLUB

NOVEMBER 2023

197.	1 ST prize	£50	Sarah Rogers
47.	2 nd prize	£20	Ken & Linda King
36.	3 rd prize	£15	M Pawley
168.	4 th prize	£10	Paul James
196.	5 th prize	£5	Tom Oliver

Thank you everyone who has re-subscribed to the 200 Club for the next 10 months. If you chose to pay by BACS please don't forget to do it!!

A big thank you also to my band of collectors

Cheryl Wilson

01865 400272



JOIN US ON THE FARM
FOR A FAMILY-FRIENDLY

Nativity Service and Carol Singing

Sunday 24 December 11.30am
Lane End Farm, Newington
OX10 7AE

Refreshments
Available

Free Entry
All Welcome

Meet and Feed Real
Farm Animals

In Aid of
St Giles Church



NewingtonHub@gmail.com

What's on

Regular Events

MONDAYS			
TUESDAYS			
WEDNESDAYS			
THURSDAYS	Tons Together WI (2nd of month)	19:30	Pine Lodge
FRIDAY	Pilates (beckyalanfitness.com)	10:15 20:00	Village Hall Village Hall
SATURDAYS			

DECEMBER & JANUARY EVENTS

Saturday 2nd December, Noon, Village Hall. Christmas Fayre

Sunday 10th 7-9pm Beth's Wishes "Winter Songs", Village Hall

Thursday 14th December at 7.30pm. Pine Lodge, WI, Christmas flower arranging

Sunday 17th December, 6pm Stadhampton Carol Service, St John's church

Monday 18th December, Stadhampton PC, Planning, 7.30pm in the Village Hall

Friday 22nd Dec, 7pm St Katherines Chiselhampton, Carols by Candlelight

Friday 22nd Dec, 8pm, Cinema Night "The Fabelmans" Village Hall

Sunday 24th Dec, 11.30, Lane End farm, Newington Nativity Service and Carols

Monday 15th January Stadhampton Parish Council, 7.30pm in the Village Hall,

Friday 26th January, 8pm, Cinema Night "The Unlikely Pilgrimage of Harold Fry"
Village Hall

DEC/JAN WASTE COLLECTIONS

GREY BINS - Tuesdays 5th and 19th December

Thursday 4th and Tuesdays 16th and 30th January

Grey weeks - food waste, rubbish, small electrical items in a carrier bag next to bin



GREEN BINS - Tuesday 12th and Thursday 28th December

Wednesday 10th and Tuesday 23rd January

Green weeks - food waste, recycling, batteries, garden waste, textiles in a tied carrier bag next to bin.

Plastic bags can now be used for food waste. **Cooking oil** can be recycled in the food caddy (use a plastic bottle if you like)

in December and January

Services St John's Stadhampton

3rd December, Advent Sunday 9.30am Family Service Christingle

10th December, Advent 2 9.30am Holy Communion

17th December, Advent 3 6pm Carol Service

22nd December, 7pm Candlelit carols St Katherine's, Chiselhampton

24th December, Advent 4/ Christmas Eve 4pm Crib Service

25th December, Christmas Day 9.30am Christmas Communion

31st December, New Years' s Eve (TEAM 10.30am at Toot Baldon)

7th January, 1st Sunday of Epiphany 9.30am Family Service

14th January, 2nd Sunday of Epiphany 9.30am Holy Communion

21st January, 3rd Sunday of Epiphany 9.30am Family Communion

28th January, 4th Sunday of Epiphany 9.30am Holy Communion (BCP)

(TEAM 10.30am at Culham)

Stadhampton Cinema Nights



Entranced by his first visit to a movie theatre and haunted by the powerful imagery of Cecil B. DeMille's Oscar-winning *The Greatest Show on Earth* (1952), young Sammy Fabelman returns home seeking to recreate it. And encouraged by Mitzi, his doting mother, Sammy discovers an irresistible passion for making home movies.

Showing Friday 22nd December



THE UNLIKELY PILGRIMAGE OF HAROLD FRY is the story of an unremarkable man who sets off on a remarkable journey. Harold lives a life without purpose until he learns an old friend is dying and vows that in walking across England to see her, his journey can keep her alive.

Showing Friday 26th January

**Both films start at 8:00pm
in the Stadhampton Village Hall**

Doors open at 7:00pm for those who would like to eat together beforehand.

The menu is still to be confirmed
To book, please contact Linda King 10 days before the screening at
linda@whereer.com



SMART New Years Resolutions

At the time of reading this most people will be thinking about Christmas, not New Years resolutions. But that time of year will soon come round. If you are serious about your goals for next year it is worth thinking about them now so that when you announce them to the world at the start of 2024 you have the best chance of achieving them.

Popular resolutions are to lose weight or to get fit but what do we mean by these goals, what do you actually want to achieve?

Whatever your resolution using SMART as a goal setting tool will get you one step closer to achieving it. Let us apply SMART to the goal of losing weight.

Specific: state exactly what your desired outcome is: *In our example of losing weight your specific goal might be - to lose one stone (14 pounds or 6.3kgs) in weight*

Measurable: what is your criteria for success, what does achievement look like. Where are you starting from and where do you want to be: *If you currently weigh 12 stone 7 pounds you know that your desired outcome is 11 stone 7 pounds.*

Achievable: do you have the knowledge, willpower, time, resources and support available to help you? *Think about how you are going to achieve this goal; are you going to join a slimming club, get a personal trainer, join a gym; whatever it is plan for success*

Realistic: can it be done? Have you tried before and not succeeded? If not, why not? *Work out your barriers and how you will overcome them.*

Time line: when do you want to do this by and what stage checks can you put in to show you are on course?

Think about ways to check you are on track on a weekly basis; this could be using a family member or friend to weigh you, slimming club or other support networks. If you planned on losing 1 pound a week your timeline would be 14 weeks long and you would be able to measure how you are doing at different stages.

To plan for success, tell your family, friends or work colleges your resolution – that way they can support you in achieving it, especially if you start to find it tough.

Whatever your resolution is going to be, think **SMART**, get others to support you and good luck! **Nige**.

TONS TOGETHER (LITTLE MILTON) WI



In November, local shanty band, Short Drag Roger entertained us with traditional shanty songs and tales of the sea, sailors and love. Thank you to Sharon & helpers for doing the teas.

In December, Melanie Dean will be demonstrating **Christmas flower arranging** on **Thursday 14 December** at **7.30pm**. We will be raffling the finished pieces afterwards so here's your chance to win some beautiful flowers. Everyone welcome (men too) - Visitors £5 or join up for £23.

On **Thursday 11 January**, we're out for our annual **New Year dinner**, this year to **The Lamb in Chalgrove**. Let me know if you'd like to come along and I'll book your place and send you a menu to choose from.

Do you live in Little Milton, Great Milton, The Haseleys, Stadhampton or surrounding villages, new to the area, want to meet new people, make new friends? Then join Tons Together WI and meet like-minded, local women of all ages in an informal, friendly group.

We meet every 2nd Thursday of the month in the Pine Lodge OX44 7PZ at 7.30pm

Too shy to come by yourself or need a lift? Contact us & we'll find you a WI buddy.

Like us at www.facebook.com/lmpinelodge

Details & news on the Pine Lodge page at www.littlemilton.org.uk

Kath Stacey 01844-279438 tonstogetherwi@oxfordshirewi.co.uk

The Last Supper Installation- at the Abbey for the next 6 months.



A sculpture made up of 50,000 keyboard keys, depicting one of Da Vinci's most recognisable paintings, has gone on display at Dorchester Abbey.

The keys create a mosaic effect on the artwork and also make up verses from the Bible as well as single words for visitors to discover. The sculpture, which took Peter Barnes five years to create, will be available during daylight hours at the abbey for the next six months.

Revd Jane Willis was delighted to welcome the artwork to the abbey. She said: "It is slightly larger than life size. The outline is the shape of Jesus and his disciples sitting round the table. It's quite dynamic – the way they are all moving and responding to one another in it. It is very rounded, very flowing in its appearance so it leaves your imagination to fill in the detail. It brings together the ancient and historic right into the here and now. When I saw it in real life it blew me away – quite surprisingly."

Revd Willis spotted the sculpture when she visited a church in Windsor and knew it was something she'd like to host at the Abbey. Plans moved quickly and within two and a half weeks she was watching it being unloaded! Using a system of winches, pulleys and ramps the sculpture was slowly manoeuvred into place – with just a few centimetres to spare.

Revd Willis added: "I'm excited that we have the Last Supper with us for Lent, Holy Week and Easter. There's so much we can do for adult discipleship, working with schools and beyond, as well as for day-to-day visitors. I'm finding seeing people engaging with the sculpture as fascinating as the piece itself! Every time I go into the Abbey I find myself having great conversations about it –

it's something you just want to reach out and touch."



VIEW FROM VIEWS.....Charles Peers

It's been a little wet of late! We have more water standing on our fields than I can remember, don't quite understand why. I think it must be that, although we have not had much more rain than other years, it has kept raining a little. Most crops now seem to be suffering from this continual wet. What I don't know is how much more they will stand. The wheat I told you about, last month, that we planted into a standing cover crop of some 18" tall, is through the ground and looking promising and, I hasten to add this is the one crop that does not seem to be suffering, it is on much drier ground. Oil seed rape (OSR) I fear a write-off. On reflection the slug problem in the OSR may be caused by the fact that, by trying to be green, we did not move the ground prior to planting, this gave the slugs a wonderful climate to breed; lots of trash from the previous crop, plus lumps of straw left by the baler. I think this illustrates that all the great benefit of leaving everything to nature does not necessarily work under all conditions. Some of the rewilding, nature friendly farming, is not always the answer, or practical. A learning curve, the jury is out, nothing is plain sailing in spite of all the environmental pressure by those who do not have to pay the bill and sit in an armchair pontificating.

Most migrating birds have now left us, including the swifts and swallows who I thought a little late this year. We now wait for our winter visitors to return. There are some good flocks of starlings, which is heartening, as they are supposed to be on the decline, and many large flocks of small birds, mainly tits I am informed. I would really like to know what they are, I do believe that these flocks contain many different species. I would like to think these include linnets, as I keep being asked, have you got any linnets, to which I have to answer I haven't a clue. The great news is that we now have barn owls in 2 parts of the farm, one seen near the village and the other by Cuddesdon Mill, (as seen on the front of Stahampton's November Village Voice). All these being accompanied by an explosion in the partridge population, also loads of sky larks all over the farm. It is very gratifying to us to think that some of the conservation measures we have taken could be having an effect. To add to this hares are once again on the increase as are the deer.

We are led to believe that our District Council, I have no reason to doubt this, is one of the best at recycling our waste. They have a very simple system and, it is a pity the rest of the country does not do the same. It, to me, is ridiculous that all councils don't use the same-coloured bins for the same uses. Here in South Oxfordshire, we are told that all the green bins are sorted and recycled, and the grey bins take all nonrecyclable waste which goes to be incinerated, (not ideal but at least it does generate electricity). Recently the bin men left a sticker on the lid of our green bins stating, use this QR code to understand what can and cannot be recycled, this is all very well and good but, not all understand a QR code. I cannot see what is wrong with a simple piece of paper that can be filed, or in our case put on the kitchen notice board for easy reference. Anything as important as this must be as simple as possible for everyone to understand.

Great news for the time being, as many by now will have heard Waterstock Golf Course development has been turned down. I guess it will only be a matter of time before it is revived again, and we will have to go through the whole process again. This application was accompanied by all sorts great works that the developers were going to include as a sop for us locals to make it look good and garner our support, like a forest school 150 sqm, about the area of the penalty area of a football pitch, a creche 600 sqm, not much bigger than about ½ a football pitch, 120,000sqm of amenity buildings. Who are they trying to impress? This just shows how developers try and show they are mitigating the impact on the area, in giving something to the community.

Recently the aerobic digester at Cassington was hit by lightning, we learnt that this was owned by a water company, why does a water company own a recycling plant, nothing to do with water supply, or sewage treatment, and now we the taxpayer have to pick up the bill to make improvements to the existing infrastructure, doesn't seem right to me.

Finally I wish all readers a Happy Christmas and more importantly a peaceful New Year!

Special Educational Needs and Disabilities service update

Steps are being taken to improve the support for children and young people with special educational needs and disabilities (SEND) in Oxfordshire following Ofsted and the Care Quality Commission's local area partnership inspection of SEND services in July.

Progress is already being made in improving the timeliness of education, health and care plans for those who need them. As of September 2023, 48 per cent of assessments were being processed within statutory time frames compared with 35 per cent in January 2023.

The local area partnership members have been working, together with the county parent carer forum and professional subject matter leads, to develop a priority action plan with clear and measurable service improvements.

A new director of children's services has been appointed by Oxfordshire County Council. Lisa Lyons, who will begin her new role in early February, will be coming to Oxfordshire from Stoke-on-Trent City Council, where she is director of children and family services. She has nearly 30 years' experience in children's and adult safeguarding, SEND, education and inclusion services.

Climate action:

In a recent independent process run by Climate Emergency UK, Oxfordshire was ranked the highest-rated county council in the UK for its work on tackling climate change, which is great news for the council. You can read about it in more detail at <https://councilclimatescorecards.uk/scoring/county/>

20mph zones approved in Nuneham Courtenay and Newington

At a recent highways decision meeting, after public consultation, 20mph zones were approved for the village centres of Nuneham Courtenay and Newington villages. The decision for Dorchester is pending in phase 2, which should be in early 2024.

<https://www.oxfordshire.gov.uk/residents/roads-and-transport/traffic/20mph-scale/20-limit-project-progress>

County of Sanctuary

I was glad that council voted through a motion at its November meeting agreeing to become a 'county of Sanctuary' for refugees, on a day when refugees were being evicted from an Oxford hotel to be transferred to the infamous Bibby Stockholm barge. This committed the council to work closely with the excellent refugee organisations in Oxfordshire and to promote the inclusion and welfare of people who are fleeing violence and persecution.

Morland House Surgery, Morland Close, Wheatley OX33 1DP

The usual surgery opening hours are Monday to Friday 8am to 6.30pm and Saturday mornings (excluding Bank Holiday weekends) 8am to 10.30am, for prebooked consultations only

Enhanced access hours are offered outside these times, please speak to one of the reception team on 01865 872448 for more information.

When the surgery is closed, please contact the Out of Hours service by phoning 111

The surgery's in-house dispensary closed permanently on Friday 29 September 2023

WHEATLEY PHARMACY REMAINS OPEN

There is no change to the process of ordering your repeat prescription. If you already collect your medication from Wheatley Pharmacy, then you need not do anything. If you have not yet nominated a pharmacy to pick up your medication, then please do so. Check or alter your nomination via your NHS login - NHS (www.nhs.uk) or contact our prescription clerk team via morland.dispensary@nhs.net Tel 01865 872448 (option 3)

Flu and Covid Vaccines - All eligible patients have been offered their flu and covid vaccines. If you are eligible and have not yet had yours then please contact your nearest pharmacy to make an appointment. To find out if you are eligible, please visit www.nhs.uk and search for "Covid Vaccination".

For a wealth of information and guidance on managing a vast number of health conditions, symptoms, and treatment, please visit www.morland-house.co.uk

Also on the website are details of the new rules relating to accessing your medical records - see <https://tinyurl.com/3879mz6p>

GUIDE DOGS

Hello, Guide Dogs are looking for Puppy Raiser Volunteers in your area and would greatly appreciate any help you could be by circulating these opportunity. Become a Puppy Raiser Are you a dog lover? Do you have a loving home for a puppy? If you have answered yes to these questions, then this role could be perfect for you! Being a Puppy Raiser means providing love, care and attention for a puppy in your home for approximately 12-16months. You will be teaching them basic commands, familiarising them with many different environments and caring for their every day needs. It is a hugely important role, as you are providing the puppy with the essential foundation for its future as a life-changing guide dog. Fear not though, Guide Dogs will be with you every step of your volunteer journey, providing you with world class training that you would even use with your own dog! Find out more There's more information on our website and make an initial application online here: www.guidedogs.org.uk/how-you-can-help/volunteering/volunteer-with-our-dogs/puppy-raiser/ You can also call us or email us with any questions or help with the application: Email: volunteer@guidedogs.org.uk Phone: 0345 143 0191 Please let me know if you would also like me to email you a poster advertising this wonderful opportunity. Many thanks Hannah, Volunteering Coordinator

District Councillor Report – Haseley Brook ward – Cllr Georgina Heritage

Real Living Wage

I'm delighted to report that a motion was passed at our Council meeting on 12th October to ensure all companies seeking to win council contracts are committed to paying, as a minimum, the Real Living Wage.

The cross-party motion was passed unanimously, and both SODC and Vale of White Horse councils are working towards accreditation as a Living Wage employer with the Living Wage Foundation.

SODC currently ensures all directly employed council staff receive at least the Real Living Wage and has done for several years. However it became evident that not all council contractors have been following this example. Whilst it is not in our power to change existing contracts, current suppliers and contractors are being urged to commit to the living wage, and all future companies seeking to win council contracts are now committed to paying the Real Living Wage as a minimum.

Affordable Housing Grant

A new improved grant process has been introduced which will encourage more affordable, energy efficient homes to be built in South Oxfordshire and the Vale of White Horse.

As part of both district councils' work to help meet the urgent need for genuinely affordable housing in the region, local developers, Community Land Trusts and self-builders can apply for a Section 106 affordable housing grant to build affordable homes that meet the councils' climate criteria.

Both councils approved an improvement to the existing affordable housing policy, to enable funds from Section 106 developer contributions to be used as a grant to build affordable homes that are energy efficient and cheaper to live in and heat. The policy includes a revamped application process which includes clear evaluation guidelines and free expert consultation services.

The new application form now includes questions which determine how projects will minimise energy use and carbon emissions, as well as how they have identified locally appropriate species and set up long term management plans when adding tree planting and biodiversity improvements.

Merry Christmas





John Howell MP writes...

The State Opening of Parliament marks the formal start of the parliamentary year and the Monarch's Speech sets out the government's agenda for the coming session. On 7th November the new session of Parliament was opened with a historic King's Speech. It was the first King's Speech for 70 years. The detail of the speech has been well covered in the media and there will be differing views on the Bills to be brought forward. In the Prime Minister's introduction to the King's Speech I was personally pleased to note mention of the Holocaust Memorial Bill which will progress the construction of a national Holocaust Memorial and Learning Centre in London. I have been a Trustee of the Holocaust Memorial Day Trust for some time. The centre will provide a focal point for national remembrance and help to promote learning the lessons of the past. As Leader of the UK Delegation to the Parliamentary Assembly of the Council of Europe I was also pleased to see the Prime Minister draw attention to the fact that he has ensured that illegal migration has been on the agenda of every international meeting that he has attended from the G7 to the Council of Europe. His attendance at the 4th Summit of the Council of Europe which was held in Reykjavik in May was very welcome.

Now to a much more local issue which is regularly raised with me, that of Royal Mail deliveries. In some specific post code areas across the constituency mail is not being delivered on a regular basis and indeed at times people have not received post for over a week. I have challenged Royal Mail on this on a number of occasions and in September met with senior staff to pursue matters further. A number of issues were explained as I set this out on my website at the time. In a recent follow up meeting I was advised that there have been some changes in senior personnel with someone specifically brought in to oversee improvements to delivery in this area. Where there are delivery problems in specific post codes Royal Mail has promised a local investigation if given the post code detail. Staff shortages remain and if anyone is interested do look online on the Royal Mail website where vacancies are advertised. It was also interesting to learn that some of the delays are with distribution via third party carriers before mail gets to Royal Mail itself for delivery. With sight of the envelope the team at Royal Mail can use the codes to track the precise journey of a letter to see where the delays are coming from. It was interesting to learn that organisations such as the NHS use these carriers which may explain why some important letters offering appointments are delayed. The situation will remain under review with Royal Mail.

If there is a particular issue that concerns you, please do share your thoughts. If you would like to know more about my work please do look at my website. The address is www.johnhowell.org.uk. My contact details are also on the website



Stadhampton Primary School



Warmly welcomes you to



Open days

Wednesday 27th September
9.30-11.30am

Thursday 19th October
9.30-11.30am

Thursday 16th November
1.15-.300pm

Friday 8th December
9.30-11.30am

Please contact school office to book an appointment

T: 01865 890370

E: office.2455@stadhampton.oxon.sch.uk



Hedgehog Class

This month we have been very busy learning lots of new ancient Greek facts, mainly all about the different Gods and Goddesses that the ancient Greek population believed in. In art we have been developing our craft skills by making poppy wreaths for remembrance day, we had lots of fun making them although it was quite difficult!

Otter Class

Otter Class finished their class novel *What's That in Dog Years?* and were blown away by the moving tale of George and his dog Gizmo. Eva said 'the ending was outstanding' and the whole class applauded a particularly spectacular event in the story.

The children have also enjoyed creating crafts inspired by Mayan civilisation as well as developing their printing techniques in art. Many of the class have been training hard for a football tournament and can't wait to showcase their skills later on in the half term.



Ladybird Class

We have been looking at festivals and events in Ladybird Class this November. Starting with finding out about Firework Night, what happens and why we celebrate it and making firework pictures. We then thought about Remembrance and made some poppies which we showed during our Remembrance assembly. We have also been looking at the festival

of Diwali, the story of Rama and Sita and finding out how it is celebrated and making some Diwali lamps.

Dragonfly Class

Dragonfly Class have been improving their strength, flexibility, balance and coordination through Gymnastics. Preparations for the school nativity are also underway and Dragonflies have been practicing the songs which will be performed next month.



Dragonfly Class have also begun learning about digital painting, using different tools to create digital art in the style of the artist Piet Mondrian. In addition to digital art, they've also begun designing their own teddy bears to plan for a textile project where they will be learning to sew!

SUDOKU Answer

9	3	5	2	1	7	4	8	5
7	4	5	9	8	6	1	3	2
8	2	1	3	4	5	6	9	7
1	6	2	5	7	3	9	4	8
4	9	3	1	2	8	5	7	6
5	7	8	6	9	4	3	2	1
2	8	9	4	6	1	7	5	3
3	1	7	8	5	9	2	6	4
6	5	4	7	3	2	8	1	9




01865 58 08 79

07411 606 609

www.privatecleaningoxfordshire.co.uk
privatecleaning_oxfordshire@yahoo.co.uk

- ✓ We are based in Wheatley
- ✓ We have 10 years experience
- ✓ We can provide excellent references
- ✓ We are fully insured
- ✓ We are family-run





DIGNITY

FUNERAL DIRECTORS

YOUR LOCAL FUNERAL DIRECTORS

Taking the greatest care



S & R CHILDS

Pharmacy House, 69 London Road, Headington,
Oxford OX3 9AA T. 01865 427 272

10 The Parade, Oxford Road, Kidlington,
Oxford OX5 1EE T. 01865 378 888

142 Oxford Road, Cowley, Oxford OX4 2EA T. 01865 714 007

4 Elms Parade, Botley, Oxford OX2 9LG T. 01865 245 464

1 Courtland Road, Rose Hill, Oxford OX4 4HZ T. 01865 772 780

For further information please visit: dignityfunerals.co.uk/local

Clive Parker

Painting and Decorating

40 years experience

Fully qualified and insured

T: 01865 400945 - 07715 627072

E: clivegrahamparker@hotmail.com

SANDRA

HOMWOOD

FUNERALS

We are a privately owned and managed family business with over 65 years experience. Our values are based on providing excellent service to our clients, transparency, fairness, good value and honesty.

Sandra, together with her principal funeral directors Darren Jeffs and Clare Hunter, offer bereaved families a unique, clear pricing structure with a refreshingly modern approach.



Sandra Homewood



Darren Jeffs

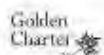


Clare Hunter



Headington: 01865 570 700 Marston: 01865 570 000

www.homewoodfunerals.co.uk





Self-Storage Containers 20 x 8 x 8 Foot

New with insulated roof
to prevent condensation

Easy access in Garsington
drive right up - Ideal storage for
Moving Home / Archiving / Cars

T&C's apply:
surmanagriculture@hotmail.com

GT Cars

Your Local Private Hire
& Taxi Service
(Formerly Courtesy Cars)



01865 343575

Email: gtcars36@gmail.com

Local & Long Distance Travel
Airports/Seaports
London City

Credit Card payments accepted in all vehicles

A lifestyle shop
& design studio
together at _____

Last

Whether you're looking for a
hand-poured, scented candle
to create a sense of calm,
or the bespoke, hand-crafted,
oak table to put it on.

**Everything comes together.
At Last.**

15 Churchway, Haddenham, HP178AB | 01844 393 633
Wed-Sat 10am-5pm & Sun 11am-2pm | www.lastineriordesign.com

JEM CHIMNEY SWEEPING

NO FUSS NO MESS NO PROBLEMS

Oxford	01865 772996
Stadhampton	01865 400244
Deddington	01869 337500
Mobile	07711 443050

CHIMNEY SWEEPING

≈ NO FUSS ≈

≈ NO MESS ≈

≈ NO PROBLEM ≈

REGISTERED MEMBER



A D OUSLEY Domestic & Commercial ELECTRICIAN



All types of electrical installation work including test and inspection and certification

Tel: Adam on 01844 339793 Worminghall

Mobile 07976352293 (8.00am 5.30pm)

Email: adousley01865@gmail.com

Registered member of the ECA and NIC EIC



D J Hazell

Property Maintenance Services (Stadhampton)

All Aspects of Maintenance Work catered for

No Job too small!

Painting and Decorating | Plumbing | Electrical | Tiling

For a free quotation please call 07899 993311 or Email: djh55@sky.com

COMMUNITY RESOURCES

VILLAGE HALL @ ST. JOHN'S (CHURCH)

Available for hire: **Everyday except Sunday morning and religious holidays.**
£13/hr-non commercial - £20/hr commercial use

- *Seating 100 people (without tables)*
- *Accessible toilet and baby change*
- *Kitchen including crockery, hob, oven, microwave, refrigerator and dishwasher*
- *Crockery for 48 full servings*
- *Cups and plates for buffet style for 100*
- *AV hire £20*
- *Saturday evening bookings will incur a cleaning fee*

Contact Jen Anderson on 07818 114 044

Email: stadhamptonvillagehall@gmail.com

Visit www.stadhampton.org or www.hallbookingonline.com/stadhampton to find out more or request a booking

TO BORROW:

Laminator—A3/A4
(for a donation to the WI) - Ann Stead, tel 891174

SPORTS PAVILION AVAILABLE for HIRE

Suitable for Meetings for Small Groups and Family/ Children's Parties.
Easy access to the Village Green for games and activities.
Charge £10.00 per hour includes use of the kitchen area, toilet facilities and heating when required

Contact Sue White 890880

TO HIRE:

Village Marquees
Sue White 890880

Village Organisations - contact details

Between the Wines Bookclub	Sally Adams	sallyeadams@btinternet.com	
Church Flower and Brass Rota	Rosalind Wilson	rosalindjwilson@btinternet.com	890535
Stadhampton Cinema Club	Ken King	ken@whereer.com	890829
Pavilion	Sue White	suzanne.white11@btinternet.com	890880
Village Ambassador	Edwina Humm	edwinahumm@talk21.com	890977
Village Ambassador	Pam Caudwell	pamnbill@hotmail.co.uk	890195
Village Hall Booking Clerk	Jen Anderson	stadhamptonvillagehall@gmail.com	07818 114044
Women's Institute	Kath Stacey	littlemiltonwi@oxfordshirewi.co.uk	
Village Voice parish magazine	Liz Eales	stadhampton.vv@gmail.com	07789 303966
	Viki Matthews	stadhampton.vv@gmail.com	07572 430339
Colourplus (Magazine Printer)	Keith Hodges	keith@colourplus.co.uk	890271
Stadhampton News (weekly)	Ken King	ken@whereer.com	890829

Cover picture. Paul Wilks. Sunrise over the Green 23/11/23

Local contact details			01865 unless stated	
Team Rector	Dorchester Abbey	Jane Willis		340007
Stadhampton with Chiselhampton PCC				
Vicar	Revd C King	teamvicarnsw@gmail.com	07534 930 147	858525
Churchwarden	Stephen Dawson	S.dawson78@yahoo.co.uk	07729 902 427	890079
Secretary	Jen Anderson	Jennifer.anderson42@icloud.com	07818 114044	-
Treasurer		treasurer.stadhamptonpcc@gmail.com		
Newington PCC		stgilesnewington@hotmail.com	-	-
Vicar	Revd C King	teamvicarnsw@gmail.com	07534 930 147	858525
Churchwardens	Alex Nettleton		-	890224
	Michael Jacques		-	400678
Secretary	Tina Derrick		-	890849
Treasurer	J. Sowik		-	-
Stadhampton Parish Council Officers				
Vice-Chair	Catherine Odell	cllrcatherineodell@stadhampton.org	07837 498 639	
Councillors	Omar Bayoumi	cllromarbayoumi@stadhampton.org	-	
	Bob Campbell	cllrbobcampbell@stadhampton.org	-	890922
	Neil Fitzgerald	cllrneilfitzgerald@stadhampton.org	07770 361 895	
	Ken Allen	cllrkenallen@stadhampton.org	07729 902 427	890079
Clerk	Bev Field	clerk@stadhampton.org	07717 134606	
Newington Parish Council Officers				
Chairman	James Nettleton		07703 341 857	890224
Councillors	Peter Ablett	peter.ablett@gmail.com	07427 592 189	
	Mike Black		-	890974
	Graham Howlett		07506 597543	891289
	Duncan Howlett		-	400305
Clerk	Eva Goble	newingtonparishclerk@gmail.com	-	
Other Numbers				
Emergency	Police/fire/ambulance - Immediately		999	
Police	Non emergency		101	
NHS	Non emergency		111	
Health Centres:	Berinsfield			340558
	Chalgrove			890760
	Clifton Hampden			407888
	Wheatley			872448
Minor Injuries:	Minor Injuries Unit - Abingdon			903476
	Wallingford First Wallingford			903471
Stadhampton Primary School	office.2455@stadhampton.oxon.sch.uk			890370
SODC	South Oxon District Council Offices		01235 422 422	
District Cllr SODC	Georgina Heritage	georgina.heritage@southoxon.gov.uk	07983 396 498	
County Cllr OCC	Robin Bennett	robin.bennett@oxfordshire.gov.uk	07979 646 815	
MP	John Howell	john.howell.mp@parliament.uk	01491 613 088	
Misc.	Acorn Barn Wedding Venue			891663
	Coach & Horses			890255
	Crazy Bear Hotel & Farm Shop			890714
	M&S shop/BP Gar-			891837
Animal Sanctuary	Iain Atkins	info@oascharity.org.uk		890239
Village Websites:	newington.org			
	Stadhampton.org	hugofox.com/community/stadhampton		



MORGAN & ASSOCIATES

VILLAGE PROPERTY CONSULTANTS

**BEST WISHES
TO YOU & YOURS FROM
ALL OF US
AT MORGAN & ASSOCIATES**

