

# MICKLEHAM PARISH Magazine

A community magazine for Mickleham and Westhumble



A.N. Colwell 1984

September 2022



## PROFESSIONAL CARPET & UPHOLSTERY CLEANING

- Local family running company
- Over 100's 5-star Reviews
- Award-Winning Customer Service
- Safe for Kids, Pets, and the Environment
- Effective against dirt & stains from drinks, food, makeup, pets & more

**SURREY  
MAIDS**

- |                                      |                                    |
|--------------------------------------|------------------------------------|
| <b>REGULAR CLEANING</b>              | <b>DEEP CLEANING</b>               |
| • Professional Equipment             | • Moving out/in services           |
| • Trained Staff • Task List Provided | • Seasonal Cleaning • Tenancy      |
| • DBS Checked • Fully Insured        | • Oven Cleaning • Windows Cleaning |
| • Flexible Hours • Easy Payments     | • Commercial Cleaning • Schools    |

**PATTY PLUS** 01306 866288  
SERVICES LTD OFFICE@PATTY.PLUS  
WWW.PATTY.PLUS

## Bullimores



Accountants for Life  
Tax • Accounts • Probate  
Inheritance Tax &  
Executorship

T: 01306 880880

E: partners@bullimores.co.uk

W: www.bullimores.co.uk

Bullimores LLP licensed to carry out the reserved legal activity of non-contentious probate in England & Wales by the ICAEW

# MICKLEHAM PARISH Magazine

September  
2022

## Mickleham Parish Magazine

A community magazine for Mickleham and Westhumble published under the auspices of Mickleham PCC with an independent editorial panel.

The magazine is published at the beginning of each month except January and August.

COPY DEADLINE  
OCTOBER MAGAZINE  
Sunday  
11<sup>th</sup> September

send to:  
Sue Tatham  
St Anthony Pilgrim's Way  
Westhumble  
Dorking RH5 6AW  
01306 882547  
editor@micklehammag.co.uk

Contributions in any form are welcome as are good quality photographs. There is no charge for advertising local charity and community events. However the editors reserve the right to shorten omit or reformat articles submitted for publication depending on space.

Printed by Holbrooks Printers  
Portsmouth

Mickleham Rectory

Hi everyone,

I hope you have all had a very enjoyable summer and been able to relax a little and see family and friends.

As I write this I am looking out on a very brown lawn and some struggling roses, and I feel very warm. It does remind me of the summer of 1976 when I was a student, and of course life was very different then. I had enjoyed the early part of that summer dressed in flared jeans with patches and t-shirts with interesting slogans. I remember going to my first beer festival which was great fun, and I went to see the sunrise at Stonehenge on the summer solstice after an all-night party. I don't remember any druids or fences then. Of course, I studied for my end of year exams, but while lying out in the sun. Later I endured a very hot commute to a temporary office job for the summer, where there was no air conditioning. Happy memories, but back then I had no idea about how increased carbon emissions would change our climate or result in so many damaging wildfires, droughts and floods to the extent we see today. My environmental concerns in those days were more focused on pesticides, oil tanker spills and litter.

Now I know so much more about global warming, my own contribution to it and of course the impact on wildlife and on the world's poorest. I am reminded by this exceptionally hot, dry summer that we can no longer continue to exploit our planet without seriously impacting our environment and those in extreme poverty. As a Christian I recognise my shortcomings and the failure of the western world to protect and nurture the beautiful and wonderful world that God has given us. I recognise He has also given us responsibility for its care. I am trying to change my lifestyle, hard though it is, to alter long-established habits. I am trying to respond in gratitude and in sadness and believe that any lifestyle change, even though it may be small, will help, such as eating less meat, reducing car use and energy consumption where I can. This may seem insignificant, but I trust that if we all join in with doing these things, we can halt the progress of the major disaster that awaits all of us, especially the world's poorest and the environment and wildlife that we so value.

I hope you will join us for our open-air service on Sunday 4<sup>th</sup> September and also for our Harvest Festival Service on 2<sup>nd</sup> October. In different ways these services will help us to be thankful for our world and to reflect on our environmental impact.

Finally, I would like to offer a warm welcome to the new Leatherhead Rector, Will Perry and his family.

Every blessing

*Sandra*

The Rev'd Dr Sandra Faccini Parish Priest

**Harvest Supper and Festival occur on 1<sup>st</sup> and 2<sup>nd</sup> October**  
**Please note details in this issue**



## Stepping Stones

MORE THAN JUST A PUB

CAFÉ-BAR  
Serving Morning Coffee and Afternoon Teas  
RESTAURANT & ALFRESCO DINING  
Serving fresh classic-style pub favourites

Live music events Take-aways available  
Available for functions / private parties / celebrations / family gatherings  
Dog friendly

Last Monday night of the  
month from 7.30 pm

01306 889932

steppingstonespub@gmail.com

www.steppingstonesdorking.co.uk

Please check website for up-to-date menus  
events and current opening times

## Sherlock Funeral Service

*Sherlock Funeral Service is an  
Independent family owned business,  
established over 100 years*

- Private Service Chapel & Rest Rooms
- Home visits arranged if required
- Pre-Paid Funeral Plans available
- Free Parking

Telephone: 01306 882266

Trellis House, 190 South Street, Dorking RH4 2ES.

Email: office@sherlockandsons.co.uk



Funeral Directors & Monumental Masons





## St Michael's Church Services

10 am Sunday Services available on Zoom

Joining information for both Zoom and telephone users is available in Pews News Online each week. If you would like to join us by Zoom then contact Alison Wood for the codes or to ask her to include you on the emailing list for Pews News: [admin@micklehamchurch.org.uk](mailto:admin@micklehamchurch.org.uk) / phone 01372 376443. We hope as many of you as possible will be able to join us for worship.

Please refer to Pews News Online for the latest information. If you missed any of the services or would like to revisit them all are available on the church YouTube channel: <https://youtube.com/channel/UCL4pbewCT91iZhcd0EjBlw>

### Confirmation



On Sunday 10<sup>th</sup> July Kelvin Pritchard and Rachel Ward took the next step in their journey of faith when they were confirmed in front of a congregation of well wishers and friends. We were delighted to welcome Bishop Jo to lead the service and would thank her for

helping to make this event so special. Thanks are also due to the team who laid on a wonderful spread afterwards and to all those who assisted in a variety of ways, making this a wonderful church family event. We ask that you remember Rachel and Kelvin in your prayers.

### Available for hire



like to find out more please contact Anne Weaver on 01306 883932.

The Chapel of Ease holds a unique position in Westhumble and has been serving the local community over many years. It holds a special place in local memory. Since its re-ordering in 2019 it now offers even greater flexibility to users and is available for hire to small groups for local events. If you would



### Men's and Women's Saturday Breakfasts at the Stepping Stones

9 – 10 AM

A social gathering open to everyone

#### WOMEN'S BREAKFAST

3<sup>RD</sup> SATURDAYS

17<sup>TH</sup> SEPTEMBER

Book with: Stephanie Randall  
0773 6933 482

[srandall55@gmail.com](mailto:srandall55@gmail.com)

#### MEN'S BREAKFAST

4<sup>TH</sup> SATURDAYS

24<sup>TH</sup> SEPTEMBER

Book with: Andy Diamond  
[diamo1@hotmail.co.uk](mailto:diamo1@hotmail.co.uk)



## Harvest Supper Saturday 1<sup>st</sup> October Village Hall 7.30 pm

ALL WELCOME

Tickets £10 adults and £5 for under 12s  
include a delicious meal, scrumptious puds and soft drinks. Pay bar.

Available from 4<sup>th</sup> September from:  
[churchwardens@micklehamchurch.org.uk](mailto:churchwardens@micklehamchurch.org.uk)

## Harvest Festival 11 am Sunday 2<sup>nd</sup> October in church Harvest gifts of non-perishable food welcome



### Bible Study at the Chapel

Thursday Morning  
Group

11 am - 12.30 pm

Contact Alison Wood  
01372 376443

[alison.wood29@btinternet.com](mailto:alison.wood29@btinternet.com)

ALL WELCOME

Monday Evening  
Group

8 - 9 pm

Contact Amanda Wadsworth  
[aewadsworth@hotmail.com](mailto:aewadsworth@hotmail.com)



Thursdays  
22<sup>nd</sup> September  
& 20<sup>th</sup> October

Mickleham Village Hall  
3.30 to 5 pm

Come along and join us for family fun,  
games, songs, food and crafts.  
For children aged 3 – 10

ALL ARE WELCOME

To reserve your place or find out  
more details, email Sarah Blake  
by Monday 19<sup>th</sup> September  
[SarahJbl@outlook.com](mailto:SarahJbl@outlook.com)

All children must  
be accompanied  
by an adult

ST MICHAEL AND ALL ANGELS CHURCH



Join our  
Prayer  
Group  
for

## Compline Night Prayer

Our prayer meetings, in St Michael's Church, are based around the very simple and lovely service of Compline or Night Prayer, which so lends itself to silent reflection and meditation. The next one will be on Tuesday 6<sup>th</sup> September at 7pm. Please do come and join us; there is absolutely no pressure to pray out loud, your supporting presence will be just as valuable! If you are not able to come, but would like us to pray for a particular person or situation in confidence, please get in touch on [prayers@micklehamchurch.org.uk](mailto:prayers@micklehamchurch.org.uk) Likewise, if you are not able to join us but would like to be part of the group of people praying for others, just let us know.

There will also be a second, slightly shorter Compline service Tuesday 20<sup>th</sup> September at 7 pm. Both sessions offer a beautiful, quiet, and calming close to the day. Everyone is welcome to come along whenever they can.

Amanda Wadsworth

### Showing support for Ukraine



St Michael's festooned with bunting  
formed of miniature Ukrainian flags  
knitted by Carole Brough Fuller  
and Frances Presley

### Open-air Service Sunday 4<sup>th</sup> September

The 10 am Family Service will be held in The Rectory garden



Superb professional  
cleaning of carpets  
oriental rugs  
upholstery curtains  
and leather  
Guardsman  
anti-stain protection

- spot stain and odour removal
- leather cleaning specialists
- flame retarding
- dust mite reduction service
- all work fully insured & guaranteed

For a free no obligation quotation call today  
Freephone 0808 144 9071  
John Joannides 28 Bracken Close Bookham

**Safeclean**  
*The furnishing care specialists from GUARDSMAN*



*Pinehurst  
Rest Home*

*We aim to provide an excellent service at  
competitive rates supporting emotional physical  
and social needs of our clients always respecting  
and protecting their status as adults.*

- Residential and 24-hour daycare
- Excellent *cuisine*
- Facilities for disabled: medic bath / lift
- Home doctor in attendance
- Single & sharing rooms
- Convalescent & short stays
- Lounge with TV & piano
- Separate dining room
- Physiotherapist chiropodist & hairdresser
- Entertainment: theatre visits / parties  
& cabarets held on premises

**National Trust Road Box Hill  
Mickleham Dorking Surrey RH5 6BY**  
Telephone: 01306 889942 / 888253

*Dorking  
Decorators*  
PROFESSIONAL  
PAINTERS & DECORATORS

**Established Local Family Business**

- Over 20 years' experience
- Internal & External
- Commercial & Domestic
- Friendly First Class Service
- Surrey / Sussex / Greater London

**FREE ESTIMATES  
01306 640418**  
**www.dorkingdecorators.co.uk**  
As approved by Checkatrade

**51**  
NORTH  
EAT • DRINK • SHOP

**An exciting new place  
to eat, drink, shop**

- Morning Coffee and pastries
- Breakfast choices
- Selection of lunch dishes
- Afternoon teas & cakes
- Selection of savouries
- Wander around our food store selection

fiftyone.degreesnorth@yahoo.com

01306 320455

@51.Degrees.North.Mickleham @51.degreesnorth

London Road  
(Bottom of Bytton Hill)  
Mickleham  
Surrey. RH5 6EH

**PRIVE**

LUXURY HAIR SALON

8 High Street Leatherhead  
01372 360302

www.privelondon.co.uk i prive\_leatherhead



**SIMON HOOPER**  
**For all your decorating needs...**

Professional friendly and speedy service at all times

Fully insured	Insurance work
Exterior painting	Interior decorating
Free quotes & advice	Oil & Water-based products
Commercial/Domestic work	Wallpaper hanging & removal
07947 135 376	0208 3978 962
www.slhdecoratingservices.com	



**St Michael's Church Community Group**



Sunday 18<sup>th</sup> September

St Michael's Church will be open to  
visitors from noon until 5pm, as part  
of Mole Valley DC's 'Heritage Event'.

Activities include:

- self-guided tours of church and  
graveyard
- 'The Bells of Mickleham' video
- An opportunity to 'Ring the Bells'  
between noon and 3pm.



**Heritage Concert 3 pm**

Elizabeth Searle mezzo-soprano  
Gillian Spragg piano  
David Fishwick organ

Works by Bach, Handel, Purcell,  
Viernes, Liszt, Gounod. and the world  
premiere of three piano preludes  
by Anthony Morris.

This will be a drop-in event, so anyone is  
welcome for five minutes or for the full  
hour or so, to appreciate the acoustics  
of our church.

Retiring collection for local charities.

### Food Bank

The need for increased efforts to  
supply our Food Bank has never been  
more clear, and this winter is likely to  
be a difficult one for many families.  
The weekly donations to each of  
our two collection points have been  
consistent and much appreciated by  
our local charities. At the moment, we

supply both Leatherhead Start and The  
Meeting Room, both in Leatherhead.  
(Do go on line to see what they do.)  
We also give to the Dorking and Epsom  
Foodbanks when required.

Help us make a greater WINTER EFFORT  
for this essential service, just tell Alexa to  
remind you or write it at the top of the  
shopping list. Generally needed items  
are listed on page 26 – particular needs  
are given in PewsNews every week.

### Scalextric Evening

Saturday 19<sup>th</sup> November

Following last year's very successful  
Skittles Evening, we are intending to try  
a more extravagant Scalextric Event at  
the village hall in November.

This will involve the hire of a large (4.5 x  
2.1m) track, together with electronic lap  
timing and managed by a professional  
race director. You will not be limited,  
except by common sense and fairness,  
to any number of timed laps, a bit like  
the practice events for Formula 1, and  
your 'personal best' will be recorded  
and displayed electronically. Finals  
sessions will follow.

We intend to run the event from 5.30  
until 9.30, with the first part aimed at  
kids and families and the second for  
the 'adult children' whose nostalgia for  
their childhood Scalextric experiences is  
high, though kids and families can carry  
on. There will be a bar.

This advance notice is because we  
want to make sure there is sufficient  
interest to cover costs, which as you  
can imagine, with a race manager,  
are higher than the bowls. The entry

charges may be of the order of: Adults  
£12, under 18s, students and those  
on benefits £6, and a family rate (4  
people) £24.

These may change dependent on  
the popularity of the Event. BUT WE  
REALLY NEED TO HAVE AN EARLY IDEA  
OF NUMBERS! So please email or  
otherwise communicate ASAP, and pay  
for your ticket up-front. Bank details  
are: Sort Code 04-00-04; Account  
Number 93513746, in name of Will  
Dennis; please use reference 'Scalextric'  
to assist. Contact for more details or an  
alternative method of payment: Annie  
Dennis: [annie@micklehamhallfarm.co.uk](mailto:annie@micklehamhallfarm.co.uk)

Payments will, of course be refunded  
in full if we find that we cannot raise  
sufficient funds.

IT SHOULD BE A FUN EVENT!

### Autumn Lunches

St Michael's Church Community Group  
intends to begin hosting soup and cheese  
lunches in Mickleham Village Hall on the  
first Thursday of each month, with a  
three month trial starting on Thursday  
6<sup>th</sup> October. We will need volunteers to  
set up, clear away, make soup and help  
in the kitchen. If you would like to be  
part of this community effort please sign  
up in the church or contact DM Mary  
Banfield (07733 322477). No charge will  
be made, but donations to cover the  
cost of the food will be welcome, with  
any profits going to charity. Please sign  
up at least five days before each event,  
so we know how many to cater for.

Mark Day

### Helping Hands

Following the piece in the magazine a little while ago about needing more names on the list for Helping Hands, at the risk of repeating myself, I ask please for more volunteers. I now have a list of four volunteers, so it is growing. It matters not whether you have a skill in plumbing, electrics, sewing, gardening, or even tiddleywinks, sometime, somewhere in Mickleham or Westhumble, a helping hand is needed.

The same requests can also be made on the Mickleham and Westhumble WhatsApp as this may go to a wider area than the magazine with quicker results. Of course, there is no charge for using either Helping Hands or WhatsApp.

Please contact me if you feel able to be added to my list of helpers, and/or contact:

- Will Dennis 07903 842674 [wddennis@icloud.com](mailto:wddennis@icloud.com) (who can put requests onto WhatsApp)
- Mary Banfield 01372 373912 [mgbbmw@aol.com](mailto:mgbbmw@aol.com)
- Frances Presley 01306 882473 [jasesmpres@gmail.com](mailto:jasesmpres@gmail.com)

Many thanks, Frances Presley





# 'The river runneth under': July 2022

*Pete Brown, author of The Vanishing River of Box Hill, reflects on a fascinating summer along the River Mole.*



Photograph: Ben Tatham

The dry riverbed south of Young Street on 27<sup>th</sup> July

That a river can sporadically disappear into the underworld then simply reappear again further downstream is almost beyond belief, yet we now know the local folklore to be true.

By mid-July 2022, the River Mole was running dry for about a quarter of a mile close to the Young Street parking area at Norbury Park. Many locals came out to see the spectacle. Upstream, 'dams' of gravel separated deep stagnant pools where herons and kingfishers were snapping up the fish as the waters slowly ebbed away. Soon, Pressforward Bridge had been

drained and Ben Tatham reported no discernible movement of water at the Weir Bridge.

The explanation for this curious phenomenon lies in the chalk bedrock of the Mole Gap. This is where water leaks through a series of ever-widening 'swallow holes' (chalk being slowly dissolved by the slightly acid water) into a labyrinth of uncharted subterranean streams, before resurfacing again as springs at Thorncroft. Gravity rules and water always finds the easiest way downhill. On its way through the Mole Gap, the underground streams cause

land to slump and, sometimes, collapse into cavities as sink holes.

Early maps labelled 'the river runneth under' provoked heated arguments because vanishing events are so rare. Daniel Defoe, who lived nearby at Burford Corner, didn't believe a word of it!

The first hard evidence came in 1949 when the late Christopher Fagg (surveyor and the first Warden of Juniper Hall Field Centre, known only as CC Fagg in his scientific papers) witnessed the entire river whirlpooling down single swallow hole at Ham Bank,



Photographs: David Kinloch



An active swallow hole taking in water. Detail above.

leaving the river dry for three miles. The riverbed collapsed almost in front of his eyes and water was pouring into (what he described as) 'a gaping hole'. The Geological Survey sent its top photographer to settle the matter. Many remember a similar vanishing in 1976, though it is difficult to be sure exactly how far upstream the river ran dry. Farmer, Nick Bullen, recalls once seeing a photo of children dancing around a whirlpool. Could this be at the same spot as the CC Fagg's whirlpool? So far, this picture has evaded us, so please do turn out your attics!

It is at the reaches that water can scour away at the cliff to get into cracks in the chalk. Some small bankside swallow holes were clearly visible in 2022 because, having played their part, they had been left high and dry. But where was the 'vanishing point'? The search was on.

**You can read the full story in: *The Vanishing River of Box Hill*, published by Dorking Museum's Cockerel Press, priced £6.**

*Ben Tatham writes ... The headline announcement by the Met Office about drought in the south of England was that it has been the driest July since records began. In Westhumble it has been worse than that: between 7<sup>th</sup> June and 12<sup>th</sup> August only 5 mm of rain has been recorded. The long-term average for this two month period is about 110 mm. No wonder that locally the River Mole has disappeared through the swallow holes!*



## The Oberammergau Passion Play

A recent visit to the Passion Play at Oberammergau was an event which will remain in my (failing) memory for the rest of my life.

Oberammergau is a small village in Bavaria which has performed a play based on the life of Jesus every ten years since 1633 when plague struck the village. The villagers vowed that 'if the killing stops, every ten years we will stage a play of the passion, death and resurrection of our Lord Jesus Christ'. The killing did stop and the villagers have kept their vow ever since. This year there are some 100 performances in which most of the villagers – men, women and children – take part.

In recent years the performances have taken place in a specially built theatre in the village which is itself truly memorable. It holds 4,000 seats in a hall sloping down to a stage the width of the building, behind which there

Fishermen and farmers know the river better than anyone. David Kinloch waded along the river and reported that water was still flowing at Ham Bank and Cowslip Reach. Downstream, Nick Bullen spotted an active swallow hole noisily taking in water and recorded video evidence. Interestingly, this was at the same location as a swallow surveyed by CC Fagg in 1948-49 and it is still active. Yet this was not the end of the story. The river, diminished, trickled on.

By the end of July, David Kinloch had narrowed down the vanishing point to Mickleham Reach and recorded video of the last waters pouring into a swallow hole. Two days later this location was dry. The vanishing was moving upstream. At the time of writing (1<sup>st</sup> August), the



Vanishing point

river had vanished underground for about one and a half miles.

With no rain, the show wasn't over, but this fascinating period had already added greatly to the knowledge of our extraordinary river. If the Met Office scientists are right, and hot dry summers are becoming the norm, these vanishing events are likely to occur more frequently. Keep watching the river.

Pete Brown

Jesus being beaten by the Roman soldiers and being nailed on the cross and you hear the crowds crying "crucify him" is so dramatic as to be almost unbearable.

We were provided with a text in English (127 pages long), but without the opportunity of reading it before the performance started. On the assumption that the English text is an accurate translation of the German, I would say that the story has been largely rewritten to increase the dramatic effect of the story. It is quite clear that Mary Magdalen was in love with Jesus but there is no suggestion that Jesus was in love with her. The Ascension does not appear in the story, but there is a reference to the empty tomb. On the difficult question of Jesus' last words from the cross, he is quoted as saying "My God, My God, why did you abandon me?", but in the original Aramaic without a translation into German. This typifies the emphasis on drama rather than theology.

If you have any chance of seeing the Oberammergau Passion Play, you really should go.

Barry Moughton



## Fully Experienced Carer/Companion

- PART-TIME LIVE-IN • DRIVING LICENCE HOLDER •
- HOURS to SUIT • BABY/CHILD SITTING •
- EXCELLENT REFERENCES • FULLY INSURED •

Reliable, Kind and Caring  
**07748 743 732**

High Quality, Professional Home Care and Companionship Enabling People in Mole Valley & Surrey to Remain Living Independently at Home

## **Treeline**™ Services Ltd. YOUR LOCAL PROFESSIONAL TREE HEALTH CARE SPECIALISTS

Felling, Pruning, Stump Removal, Planting, Logs,  
Woodchip, Air Spade Services, Consultancy

Call us on **01306 741800**  
**office@treeline.co.uk • www.treeline.co.uk**

Your visiting



**PHYSIOTHERAPIST**

**SUE JUDD** MCSP HCPC

40 years of experience.

All your requirements for elderly  
mobilisation & post-operative  
rehabilitation.

07834 227999 sue-judd@sky.com

## **EDE BROS**

• REMOVALS • STORAGE • SHIPPING •

- Since 1926, Capel-based and family owned
- STRESS-FREE, local, national & worldwide
- Contact us for your **FREE** estimate...

**01306 711293**  
**edebros.co.uk**



Gill and Paula would like to warmly welcome you to Aspen Care offering assistance to enable you to live in the comfort of your own home with care and companionship.

- A happy alternative to a care home
- Cover while your family or carer takes a holiday
- Recuperation and rehabilitation following a hospital stay
- All aspects of personal care medication and meal prep
- Dementia care disability chronic & critical conditions end of life care
- Accompaniment to appointments

Call for a chat to discuss your requirements.

We look forward to hearing from you.

01737 354821 info@aspensliveincare.co.uk www.aspensliveincare.co.uk

## **P J Oliver & Son**

Window cleaning  
House & Garden Maintenance  
Roof Repairs Guttering  
Painting & Decorating  
Ground works fencing hedge cutting  
and tree work  
Also Pest control

Call Phil on 07722 158111  
Email [Oliviagarrett79@gmail.com](mailto:Oliviagarrett79@gmail.com)



**YOUR LOCAL FARM SHOP  
ON DENBIES WINE ESTATE**  
farm shop deli plant centre

Open daily 9.30 to 5.30 and Sundays 10 to 5 Free parking

**Local produce, seasonal food, plants and flowers. English apples now in!**

We deliver veg bags and more to the local area on Tuesdays and Fridays

see [www.vgfarmshop.com](http://www.vgfarmshop.com) or email [vegbag@vgfarmshop.com](mailto:vegbag@vgfarmshop.com) for details

**LOCAL • NATURAL • ETHICAL** 01306 880720 [www.vgfarmshop.com](http://www.vgfarmshop.com)

## MICKLEHAM CHORAL SOCIETY

# Let's Party!



Mickleham Choral Society, having been largely silenced by the pandemic for so long, finally put on a much-awaited summer concert on 18<sup>th</sup> June. Audience and choir alike were somewhat decimated by Covid, which had rampaged through the village following the super-spreader Jubilee lunch, but this did not stop the rest of us having a swinging evening, built round an American theme.

The opener was a stylish arrangement of a Zambian folk song, *Bonse Aba*, followed by a modern calypso, *Under the Sea*, from *The Little Mermaid*. Then a wonderful piano solo of Gershwin's *I Got Rhythm*, beautifully played by the incredibly talented Judith Flint. It wasn't clear that the lighting technician had been told about this, as the lights went up on the choir, and then down again once it became apparent that they weren't actually singing...

The hoedown section contained a lovely Aaron Copeland number, *Ching-a-ring-chaw* as well as the timeless *Rhythm of Life* from *Sweet Charity*. Your correspondent remembers being taken to this show, aged 10, by his parents and asking them what Charity's profession was. Taxi dancer, they said. Sixty years on, it transpires they lied.

Look it up. The choir coped manfully (if that word is still acceptable) with the tongue-twister lyrics of this song, but dare one suggest it might have been taken a bit faster? There was also a bizarre song called *Bring me little water Silvy*, which appeared to include a lot of thigh slapping by the female singers. Actually I'm told the correct term is 'body percussion'. The mind boggles. Whatever, it was a lot of fun.

We waltzed next, to stunning versions of *Moon River* and the *Merry Widow Waltz*, both arranged from the original scores by MCS stalwart Neil MacKay, and the latter with lovely flute accompaniment from Helen Birchmore.

And then it was *Swing Time*. The choir's versions of *Every time I feel the Spirit* and *Rock my Soul in the Bosom of Abraham* would have got us on our feet, if we hadn't been a bunch of shy retiring Brits. It was terrific stuff, rhythmic and raunchy. MCS won a class at the Leith Hill Music Festival last time out with *Every time I feel the Spirit*. These were preceded by Billy Joel's *The Longest Time*, sung by what the programme notes called the 'boys' – none of whom looked in the first flush of youth and some looked decidedly female, but nowadays I

suppose anyone can self-identify as a 'boy'. The star of this piece was Rick Singh, whose tenor solo soared beautifully above the others. It takes great confidence to sing such a part, because any mistake is very obvious. But boy, he sure nailed it.

And, as musical director Juliet Hornby said, despite the war in Ukraine, the cost of living crisis, Covid and Partygate, we do live in a *Wonderful World*, and the choir nailed that one too, as their well-deserved encore. Eat your heart out, Louis Armstrong.

Thanks to Rod, Myles and Nick on the bar, Cathy, Anne and Mike on the tickets and the raffle, the Running Horses and Will P for generous donations. To pianist Judith and flautist Helen. And above all to Juliet, during whose tenure the number of singers in this choir has increased by 200%!

We are greatly looking forward to the autumn tour to Sinalunga, in Tuscany. Sinalunga is twinned with Dorking, and Mickleham Choral Society is doing two concerts there, on 28<sup>th</sup> and 29<sup>th</sup> October, one of secular music and one of sacred music. How about a weekend musical break in Italy?

Will Dennis

## Come and Sing

Thursday 1<sup>st</sup> September 7.30 for 8 pm Mickleham Village Hall

Mickleham Choral Society meets on Thursday evenings at 8 pm in Mickleham Village Hall. New members are always welcome – no audition is required. We do three concerts a year plus participating in the Leith Hill Music Festival in April. Just come along for an evening to sing with us and see how you like it. Our first rehearsal of the new season is on Thursday 1<sup>st</sup> September. Music and refreshments will be provided and of course we hope you have such a wonderful time you will come back for more.



For more information, please go to [www.micklehamchoral.org.uk](http://www.micklehamchoral.org.uk) or contact our conductor, [juliethornby@yahoo.co.uk](mailto:juliethornby@yahoo.co.uk)





## Mickleham and Westhumble Horticultural Society Summer Show 2022



I think we have to be thankful this year that our show fell on Saturday 9<sup>th</sup> July, because now, as I write this report, no significant drop of rain has fallen since. However, the produce on display this year was excellent, despite quite a cold start to the growing season. Doors opened to exhibitors at 8.30 sharp and when the judging began at 10 am there

were a good number of exhibits with a few new exhibitors, which is always encouraging. I am always impressed by the care and attention lavished by the judges on the different classes - they really give every exhibit their full care and attention. The potato judging took a full fifteen minutes before a decision was reached.

For a small community we certainly put on a good variety of high-quality produce and crafts, standouts being awarded cups as listed below. July is a bit early for many vegetables but people still managed to find outstanding specimens. Step forward Sarah Penry for spectacular spring onions! Of course, flowers abounded with single stems and arrangements making a colourful display. Arts, crafts and photographs all demonstrated the creativeness of our community. Well done to both the nursery and the infant school for entering classes and showing off the children's artwork. As ever, the person with the best task was the cookery judge, sampling his way

along the back wall. No exhibit went untasted or unappreciated, finishing as all good repasts do with a few sips from bottles of alcoholic beverages.

In the afternoon nursery mums and helpers provided great quantities of tea and cakes, especially welcome on such a hot day. Fortunately, there was always a shady area for people to sit and keep cool. In years to come we plan to increase the number of stalls to provide more variety and interest for all. Covid made an impact on stallholders' willingness to participate this year. However, our plant stall did well and there were many orders for reduced price manure and compost. Lucy and Sophie Adshead are the architects of a scheme to bulk buy both, with a sizeable reduction in cost. This is open to all members of the society. Do contact Lucy via [LucyAdshead@lapurple.co.uk](mailto:LucyAdshead@lapurple.co.uk) by 1<sup>st</sup> September if you wish to take advantage of this offer.

Thanks are due to all who took part in the show, which continues to be a successful and lovely local occasion.

David Kennington

### Winners

Paynter Cup, a vegetable garden full of promise	Pauline Davis
Aitken Cup, a garden area grown for your own enjoyment	Sophie Adshead
Ellman Cup, most outstanding exhibit—flowers	Judy Kinloch
Robson Cup, most outstanding entry—vegetables	Sarah Penry
Schreiber Cup, most outstanding entry—fruit	Val Hallett
Gordon Clark Cup, most outstanding entry—floral arrangements	Alison Walton
Dennis Trophy, most outstanding entry—cookery	Sophie Deeks
Vi Bullen Trophy, most outstanding entry—arts and crafts	Charlotte Daruwalla
Alan Huggett Memorial Cup, best dahlias	Sue Willis
Taylor Cup, most points—cookery	Sarah Blake
Colwell Cup, most points—arts and crafts	David Hall
Bronze Banksian Medal, most points—horticulture	Sue Willis
Salomons Cup, most points in show	Sophie Adshead
Irvine Cup, most outstanding children's 3-4 yrs	Bella Gill
Heygate Cup, most outstanding children's 5-8 yrs	Martha & Verity Ward
Wilkinson Cup, most outstanding children's 9 and over	Anthony Deeks
Hudlass Cup, best entry St Michael's School,	Ruby Toet



## Mickleham & Westhumble Local History Group Visit to Juniper Hill

When we arranged our first visit to Juniper Hill, eight years ago, eighteen people attended. This time we were pleasantly surprised when thirty people signed up, with more hoping a third visit might be arranged as they were unavailable on the date chosen. Covid however had other ideas and on the day of the visit we were down to fifteen, mostly a result of the Queen's Platinum Jubilee Lunch in the Village Hall, now more likely to be remembered as the Great Mickleham Superspreader Event.

On arrival at Juniper Hill, we were greeted by Estate Manager Chris Livett who introduced us to the owner Jan Murray. When Jan and his wife Jackie bought the house in 2000 they were faced with a huge restoration project, started by the previous owners Kiko Nakahara and her husband Jean-Paul Renoir but left unfinished as the couple faced criminal charges in the USA and France. They had also made themselves deeply unpopular locally for trying to re-route Stane Street.

Restoring the house has clearly been a labour of love for the Murrys (at least most of the time as they did at one point consider putting it up for sale again) and they have obviously enjoyed the search for their ideal furniture and fittings. A chandelier from Thame House hangs in the dining room above a table bought in Tuscany but made in England, while a snooker table made for the Sultan of Brunei has pride of place in a room containing panelling at one time part of



Juniper Hill 2014

a library in a house owned by the Bank of England.

Without doubt, our group found the Winter Garden the most intriguing part of the visit. When Theodore Bryant of the Bryant and May match company bought Juniper Hill in the 1880s the main entrance was at the front where it is today. Bryant constructed a new entrance at the back with a porte-cochère leading into a Winter Garden with a magnificent glass roof. The walls were covered with pulhamite, a man-made rock invented by James Pulham which became extremely popular as a result of the Victorian craze for ferneries and alpine gardens. The Murrys have restored this area and we were astonished to see how part of the floor can be lowered using an ingenious hydraulic system to form the bottom of a swimming pool with the water pumped in on top of it. Bryant's

photo album, now in the Surrey History Centre, is an invaluable resource for local history enthusiasts as it contains numerous photos of his family, friends and local residents, all neatly labelled with names, dates and locations.

Another notable resident was Viscount Bennett, the former Prime Minister of Canada and close friend of Lord Beaverbrook who owned Cherkley Court. Bennett moved to Mickleham in 1939 and lived there until his death in 1947. He installed the library in what had previously been the dining room and has unusual, curved doors dating back to the mid-19<sup>th</sup> century. As many readers will know Bennett is the only Canadian Prime Minister to be buried outside Canada.

We are all extremely grateful to Jan and Chris for giving up their time and also for allowing the visit to go ahead, given the prevalence of Covid at the time.

Judith Long



Archive photographs from the Bryant album. Left: Entrance to the Winter Garden 1887. Right: Inside the Winter Garden 1888



## A Confidential & Safe Space to Talk

Counselling • Mind & Body Healing  
Reiki • Relax into Nature Sessions  
Face to face/Online/Outdoors/Distance  
Supporting you with compassion and  
understanding through challenging times



Call Judith Cobby  
on 01306 882229  
or 07790 614448

[www.healing-inspiration.co.uk](http://www.healing-inspiration.co.uk)

## Ballroom Dancing Latin American Dancing Professional Training [IDTA]

Private lessons on  
Tuesday afternoons and  
Sunday evenings

At Mickleham Village Hall  
Dell Close Mickleham Surrey RH5 6EE  
07748 867 732  
[vmvdancing@gmail.com](mailto:vmvdancing@gmail.com)



IDTA Qualified Teacher

## Mike Palmer Electrical Services

Part P registered electrician

From additional lighting and  
sockets to complete rewires  
Fully insured Registered with the NICEIC

07866 930483 [mike@mikepalmer.biz](mailto:mike@mikepalmer.biz)  
Boxhill Way Strood Green Betchworth RH3 7HY



Regular Lawn Mowing  
Lawn Care & turfing  
Pressure Washing  
Hedge Trimming  
General Garden Maintenance

[phil@philsmowingdorking.co.uk](mailto:phil@philsmowingdorking.co.uk)  
07905 160765



## KING WILLIAM IV

Hello friends and neighbours

It has been a glorious summer thus far. Our bottom garden patio, with its 49ft<sup>2</sup> parasol was finished just in time. The area remains bright but also provides some lovely shade when the temperatures are in the mid-30's. This area will also come into its own on warm days when there is an unexpected shower.

I have been working on our Bavarian beer garden with an outside bar in an under-used space with probably the best views from the pub. At the moment there is a problem with the lager 'fobbing', as it is too far from our cellar keeping the kegs cool is an issue. I may have to dig a cellar pit to keep the barrels cool. My aim is to have this area ready for an 'Octoberfest', Bavarian-style beer festival. Our first Friday night music event was on 26<sup>th</sup> August. If this proves popular, it will continue.

See you soon, Eamonn

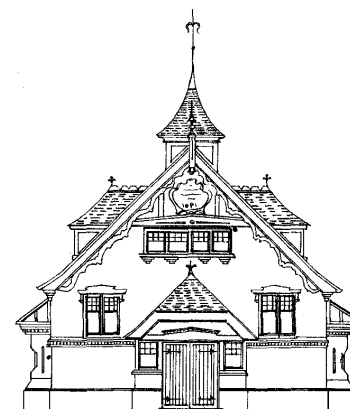
Byttom Hill Mickleham 01372 372590 [www.thekingwilliamiv.com](http://www.thekingwilliamiv.com)

## TIM LANGLEY

*Experienced craftsman*

ANTIQUE RESTORATION  
CABINET MAKING  
FRENCH POLISHING

Free estimates collection & delivery  
01372 457700 07960 486455



## Mickleham Village Hall available for hire

Hall bookings  
Table & chair hire

Deanna Darnell

07790 941 601

[bookings@micklehamvh.co.uk](mailto:bookings@micklehamvh.co.uk)

[www.micklehamvillagehall.org.uk](http://www.micklehamvillagehall.org.uk)



Planning  
a party?

Equipment  
available for hire

China ~ Cutlery

Electric urn

Equipment hire

Mary Banfield

01372 373912

[admin@micklehamvh.co.uk](mailto:admin@micklehamvh.co.uk)

## Community Directory

BOX HILL AND HEADLEY HEATH (National Trust) 01306 888793  
Lead Ranger – Federico Ghittoni (Fede) 07342 080109  
[Federico.Ghittoni@nationaltrust.org.uk](mailto:Federico.Ghittoni@nationaltrust.org.uk)  
Friends of Box Hill – Chair Lyn Richards 01737 842889  
[lyn@mra.uk.net](mailto:lyn@mra.uk.net)

BOX HILL SCHOOL 01372 374814  
Headmaster – Cory Lowde [HMPA@boxhillschool.com](mailto:HMPA@boxhillschool.com)

DORKING CRICKET CLUB  
Chairman – Andrew Homewood [homewooda@hotmail.co.uk](mailto:homewooda@hotmail.co.uk)

DORKING GROUP OF ARTISTS  
Exhibition Secretary – Patricia Booth [patriciabooth100@gmail.com](mailto:patriciabooth100@gmail.com)

DORKING LAWN TENNIS & SQUASH CLUB  
Jim Cattermole 01306 883629  
[jim.cattermole@uwclub.net](mailto:jim.cattermole@uwclub.net)

DORKING RUGBY CLUB 07789 176417  
Jim Evans [jim@flintcottage.net](mailto:jim@flintcottage.net)

THE GARDEN SHED 07759 646353  
Pauline Davis [paulinemdavis@gmail.com](mailto:paulinemdavis@gmail.com)  
Susie Gowenlock 07768 923088  
[susiegowenlock@gmail.com](mailto:susiegowenlock@gmail.com)

JUNIPER HALL FIELD CENTRE 01306 734501  
[enquiries.jh@field-studies-council.org](mailto:enquiries.jh@field-studies-council.org)  
Head of Centre – Maddy Jones [m.jones@field-studies-council.org](mailto:m.jones@field-studies-council.org)  
Friends of Juniper Hall – Suzy Hughes 01483 281935  
[suzy@suzyhughes.co.uk](mailto:suzy@suzyhughes.co.uk)

MICKLEHAM CHILDREN'S PLAYGROUND ASSOCIATION 07767 891772  
Secretary – Sarah Parfitt [sarah@sarahparfitt.com](mailto:sarah@sarahparfitt.com)  
[www.micklehamchoral.org.uk](http://www.micklehamchoral.org.uk)

MICKLEHAM CHORAL SOCIETY 01372 373106  
THURSDAYS 8 - 10 pm – MICKLEHAM VILLAGE HALL  
Conductor – Juliet Hornby  
Secretary – Mike Benson [mike\\_benson@btinternet.com](mailto:mike_benson@btinternet.com)

MICKLEHAM OLD BOX HILLIANS FOOTBALL CLUB 01372 374745  
Secretary – John Atewell

MICKLEHAM PARISH COUNCIL [www.micklehampc.org.uk](http://www.micklehampc.org.uk)  
SEE WEBSITE FOR MEETING DATES 01372 379381  
Chairman – Rev'd David Ireland [rev.ireland43@btinternet.com](mailto:rev.ireland43@btinternet.com)  
[clerkatmpc@gmail.com](mailto:clerkatmpc@gmail.com)

Parish Clerk – Feena Graham 01306 882547  
MICKLEHAM PARISH MAGAZINE [editor@micklehammag.co.uk](mailto:editor@micklehammag.co.uk)  
Editor – Sue Tatham 01306 884025  
[editor@micklehammag.co.uk](mailto:editor@micklehammag.co.uk)

Co-Editor – Charlotte Daruwalla  
MICKLEHAM VILLAGE HALL 01306 882547  
Chairman – Ben Tatham [chairman@micklehamvh.co.uk](mailto:chairman@micklehamvh.co.uk)  
Bookings Manager – Deanna Darnell 07790 941601  
[bookings@micklehamvh.co.uk](mailto:bookings@micklehamvh.co.uk)



## ST MICHAEL'S CHURCH

*within the United Benefice  
of Leatherhead and Mickleham*

INCUMBENT – VACANT

PARISH PRIEST

The Rev'd Dr Sandra Faccini \* 01372 417664  
NB Corrected mobile number 07763 488961

parishpriest@micklehamchurch.org.uk

\* Main working days: Monday Tuesday and Sunday

CHURCHWARDENS

Timothy Mathieson 07555 597163

TimothyMathieson@aol.com

Catherine Diffey 07790 473167

Mickleham@diffey.me.uk

PARISH ADMINISTRATOR

Alison Wood 01372 376443

admin@micklehamchurch.org.uk

PCC SECRETARY

VACANT

TREASURER

Richard Siberry 01372 375303

pcctreasurer@micklehamchurch.org.uk

ORGANIST

David Fishwick 0208 7732420

organist@micklehamchurch.org.uk

WEDDINGS CO-ORDINATOR

Elaine Machin 01372 724972

weddings@micklehamchurch.org.uk

BAPTISMS CO-ORDINATOR

Vickie Leney 01306 884054

baptisms@micklehamchurch.org.uk

FUNERALS ORGANISER

Brian Wilcox 01372 374730

dbrianwilcox@btinternet.com

WEBSITE MANAGER

Kelvin Pritchard 07770 280410

website@micklehamchurch.org.uk

[www.micklehamchurch.org.uk](http://www.micklehamchurch.org.uk)

For information about services for other  
denominations see website pages.  
Search on 'Churches Together Mole Valley'



## CALENDAR

### September

1	Thursday	7.30 pm	Choral Society's 'Come and Sing'. Village hall
3	Saturday	10 am	Coffee Morning at Westhumble Chapel
4	<b>SUNDAY – Trinity 12</b>	10 am	Family Service in Rectory garden
6	Tuesday	7 pm	Prayer Group Compline in church
8	Thursday	11 am	Thursday Bible Study Group starts
10	Saturday	9 am	Women's Breakfast at the Stepping Stones
11	<b>SUNDAY – Trinity 13</b>	8 am 11.30 am	Holy Communion in church Matins at Westhumble Chapel
<i>Copy deadline for October parish magazine</i>			
17	Saturday	9 am	Women's Breakfast at the Stepping Stones
18	<b>SUNDAY – Trinity 14</b>	8 am 10 am from noon 3 pm	Holy Communion Holy Communion in church Heritage Open Day in church Heritage Concert in church
19	Monday	3 pm	Tea@3 at Old House
20	Tuesday	7 pm	Prayer Group Compline in church
22	Thursday	3.30 pm	Messy Church in the village hall
23	Friday	10 am	Macmillan Coffee Morning at Chapel Farm
24	Saturday	9 am 10.30 pm	Men's Breakfast at the Stepping Stones Beating the Bounds from Westhumble Chapel
25	<b>SUNDAY - Trinity 15</b>	8 am 10 am	BCP Holy Communion at Chapel Holy Communion in church
27	Tuesday	7.30 pm	Garden Shed talk 'All about Roses' at the Stepping Stones
28	Wednesday	4 pm	Blessing of Marriage in church

### October

1	Saturday	7.30 pm	Harvest Supper at the village hall
2	<b>SUNDAY - Harvest Festival</b>	11 am	Family Service - <b>note later time</b>



#### Dates for your diary

Thursday 6 <sup>th</sup> October	October lunch
Sunday 9 <sup>th</sup> October	Sundays at Six
Saturday 15 <sup>th</sup> October	Beating the Bounds 2
Thursday 20 <sup>th</sup> October	Messy Church
Sunday 23 <sup>rd</sup> October	Church Tour Encore
Saturday 5 <sup>th</sup> November	Westhumble Bonfire & Fireworks
Saturday 19 <sup>th</sup> November	Scalextric Evening



## MEMBERS OF THE PAROCHIAL CHURCH COUNCIL

Sarah Blake	Elaine Machin
Mark Day	Tim Mathieson
Andy Diamond	Beverley Mehta
Catherine Diffey	Elizabeth Moughton
Caroline Jones	Kelvin Pritchard
Vickie Leney	Richard Siberry

## ST MICHAEL'S CHURCH COMMUNITY GROUP COMMITTEE

Mary Banfield	01372 373912 mgbbmw@aol.com
Kay Cain	07736 281752 kay__jay@hotmail.co.uk
Mark Day	07852 117249 mickleham@hotmail.com
Andy Diamond	07789 775354 diamo1@hotmail.co.uk
Frances Presley	01306 882473 jasempres@gmail.com
Amy Ward	07709 199292 amycatrionaward@gmail.com

## ST MICHAEL'S CHURCH COMMUNITY GROUP

### HELPING HANDS INCLUDING FOOD FOR FRIENDS

*A service for all residents of Mickleham and Westhumble*

Examples of services we offer:

- Essential shopping / collection of prescriptions
- Changing library books
- Small tasks: eg changing fuses, altering clocks etc
- Dog walking
- Visiting / befriending
- Home-cooked meals for local families going through difficult times

Requests to:

Will Dennis 07903 842674 [wdwdennis@icloud.com](mailto:wdwdennis@icloud.com)  
(who can put requests onto WhatsApp)  
Mary Banfield 01372 373912 [mgbbmw@aol.com](mailto:mgbbmw@aol.com)  
Frances Presley 01306 882473 [jasempres@gmail.com](mailto:jasempres@gmail.com)

*More helpers needed – please contact  
Frances if you can spare some time.*



# Community Directory

Continued from page 13

MICKLEHAM & WESTHUMBLE BADMINTON CLUB  
Membership Secretary Sarah Blake tinkerbelle0044@hotmail.com

MICKLEHAM CRICKET CLUB  
Membership contact Will Dennis 07903 842674  
will@micklehamhallfarm.co.uk

MICKLEHAM & WESTHUMBLE HORTICULTURAL SOCIETY  
Chairman – David Kennington 01372 362309  
www.surreycommunity.info/mwhs davidkennington144@gmail.com

MICKLEHAM AND WESTHUMBLE LOCAL HISTORY GROUP  
Chairman – Ben Tatham 01306 882547  
ben@thetatham.co.uk  
www.micklehamwesthumblehistory.co.uk

MOLE VALLEY DISTRICT COUNCIL 01306 885001  
Councillor Elsie Rosam 01306 885695  
elsierosam29@gmail.com

THE ARTS SOCIETIES (FORMERLY NADFAS)  
Betchworth – Mary Venning 01306 883301  
Dorking – Sue Tatham 01306 882547  
Leatherhead – Sarah Sheridan 01306 883699

ST MICHAEL'S CHURCH OF ENGLAND (A) INFANT SCHOOL 01372 373717  
info@stmichaels-dorking.surrey.sch.uk  
Friends of St Michael's School – friendsofstmichaels2017@gmail.com

ST MICHAEL'S COMMUNITY NURSERY  
WEEKDAY MORNINGS – MICKLEHAM VILLAGE HALL  
Supervisor – Hilary Budd 01372 361021  
stmichaelsnursery@btinternet.com

SURREY COUNTY COUNCIL 03456 009 009  
Councillor – Hazel Watson 01306 880120  
hva.watson@btinternet.com

SURREY WILDLIFE TRUST 01483 795440  
info@surreywt.org.uk

TREE WARDEN  
David Kennington 07546 952521  
davidkennington144@gmail.com

WESTHUMBLE NEIGHBOURHOOD WATCH  
Lead Co-ordinator – David Allbeury 07860 227451  
westhumble.neighbourhood.watch@gmail.com

## ADDITIONAL CONTACT INFORMATION

CITIZENS ADVICE  
Dorking – Lyons Court 01306 732302  
Leatherhead – Swan Mews High Street 01306 732301

CRIMESTOPPERS 0800 555 111  
POLICE Non-emergencies 101  
(often quicker to make online report) <https://report.police.uk/>

Neighbourhood Specialist Team – Dorking Rural East  
General enquiries molevalley@surrey.pnn.police.uk

NHS Urgent and emergency care 111

## Babysitting by local youngsters

Those listed below are at least  
14 years old.

Gracie Owen \*\*07790 900649  
Annabelle Prosser\*

07443 634179

Maisy Presley\* 07720 657327

Martha Pearce 07514 080005

Rory Lee \*\* 07973 360950

Ellie Kim 07773 395575

Chelsea Edwards 07834 695816

Edward Moran 07740 088124

Daisy Armitage \*\*07580 473812

\* Holidays only

\*\* Parent's mobile number

*If you would like to add your  
name to this list please get in  
touch with Sue Tatham*

01306 882547

editor@micklehammag.co.uk

No Charge

## Advertising in the Parish Magazine

Please contact

Sue Tatham (as above)

Small ads: a nominal fee is  
charged for ads where items or  
services are bought or sold.

We have been advised to print  
the following reminder:

*We cannot guarantee the  
quality of the goods and  
services offered by our  
advertisers.*



## Stan Piper 1935 – 2022

Stan was born and raised in Richmond where Kew Gardens was a playground for him and his friends. In later years swimming and water polo were important. National Service was mostly carried out in Kenya working with Survey of Kenya. Back in civilian life drawing maps became his occupation and, until his eyesight failed, looking at maps was a favourite pastime. He and Jaki were married in 1958 and their children were born in the sixties.

In 1966 the family moved to Zambia for eight wonderful years, where Stan passed on his knowledge of surveying and map-making. Upon their return to England, he and the family lived in Hampton Hill, but Heathrow noise drove them out to Mickleham. They lived in Dell Close where they spent many happy years. Stan's activities included settling footpath registration and a time on the parish council. He set up a sports shop but, for various reasons, he sold that and settled down to preparing bespoke squash rackets and gardening.

The family then moved to ruined farm buildings in Cornwall where Stan carried out all the work, from floors to roofs, to plumbing. He enjoyed very hard physical work. He also became a recorder for National Milk Records (early mornings with cows became a much-enjoyed time), where he found many new friendships. On becoming a grandfather to twins he decided to sell up and move east. After the twins' family went to Australia, France beckoned. A return to England a few years later resulted in many moves around the south of England until 2019 found him in Buckland. By that time dementia had got its grip which, with deafness and impaired eyesight, meant life became rather tedious. He spent his last four weeks in East Surrey Hospital following a bad fall. In all a happy and varied life with innumerable memories. He will be sorely missed.

Stan was 'planted' (Jaki's preferred term) at Clandonwood Natural Burial Ground. We send our condolences and love to Jaki and her family.

## Parish Magazine Staff Update

We are making progress toward securing the future of the magazine after my retirement at the end of the year. We now have a treasurer and Sarah Penry has agreed to deal with the advertising. Jan Budleigh has come forward to help Charlotte with the desktop publishing and we have a very professional proof-reader. There are still two main areas to be addressed.

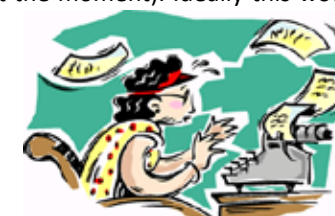
First of all, we need someone to oversee the magazine distribution. This would not be a big-time commitment as distribution and delivery teams are already in place. The distribution supervisor would update and manage the lists each month as well as deal with mailing list subscriptions (only 16 at the moment). Ideally this would be

someone who is happy working with spreadsheets. Once this role is filled the actual production and distribution of the magazine is covered. However, unless we can find people willing to join the editorial panel and generate the content the magazine cannot survive. We need a team of people who are active in the community and will commit to identifying what should be included each month and suggesting sources for the material. Members of the panel would not necessarily need to write the articles themselves. Several people have offered to help with this.

At the moment the editorial meets at 4 pm on the first Tuesday of the month when we review the last issue and identify items to be included in the coming mag, possible sources of information and future articles.

If you would like to help with the magazine in any way, please do get in touch with me on 01306 882547 or via [editor@micklehammag.co.uk](mailto:editor@micklehammag.co.uk)

Sue Tatham



From the Editor

## Community News

Congratulations to:

• Tracy and David Kennington on the arrival of their first granddaughter Otilie Grace Kennington McKellar. Born in Thonon les Bains, France on 10<sup>th</sup> June to Georgina and Mark McKellar who live in Morzine, France.

• Cathy Cain of Pilgrims Way on the arrival of her third granddaughter Amelia Catherine on 21<sup>st</sup> July, first child of daughter Rosie and Rob Whitham who live in Bristol.

• Diana and Robert Dyson of Burney Road on the arrival of grandson Leon Rye\* Cousins on 20<sup>th</sup> June. Born to daughter Rachel (former pupil at St Michael's School) and David Cousins, a brother for Joshua Cai Cousins. \*Leon Rye means a 'lion messenger'. The family live at Totterdown, Bristol.

• Greg Ayton of Bytton Hill on the arrival a grandson Henry on 10<sup>th</sup> May. Born to daughter Amber and partner Ollie who live in Leatherhead.

Farewell to:

• Jane and Graham Brown who have moved from School Lane to Chipstead. They will be much missed - Jane was a long-serving parish councillor and Graham helped with the Almshouses.

• Eva Dillon and son, Sage, who after many years in Mickleham have moved from Old London Road. Sage is now living in Dorking. Eva who has been very active in the church and community is currently living locally.

• The Forti family who have moved from Pilgrims Way and are presently living in Oxford.

Welcome to Eduard Popov, wife Tatiana and daughter Lisa who have moved to Mickleham from Nikolaev in Ukraine.

Congratulations to Andrew Tatham whose book *I Shall Not Be Away Long* was shortlisted in the non-fiction section for the Rubery Book Award. This is an international prize open to independently published books.

## Keeping in touch

If you would like to join the Mickleham and Westhumble WhatsApp Group please contact Will Dennis via [will@micklehamhallfarm.co.uk](mailto:will@micklehamhallfarm.co.uk)



## Westhumble Bonfire & Fireworks Saturday 5<sup>th</sup> November



Following the last couple of years, when sadly we have been unable to hold the bonfire due to Covid, plans are to hold This year's bonfire and fireworks will be on Saturday 5<sup>th</sup> November in the same field as previous years adjacent to the railway (Westhumble Field).

**Building the bonfire will begin on 15<sup>th</sup> October.**

Please don't leave it to the usual few to do the work. We need lots of new helpers so that the old-stagers can pass on their bonfire-building skills ensuring that this very popular community event

can continue. Everyone is welcome. Even if you can only spare a short amount of time please come along. Refreshments will be available.

Please remember that a bonfire is a dangerous place even before it is lit, so please keep small children and pets under supervision.

On the day the torchlight procession will leave at 5.45 pm from the junction of Burney Road, Chapel Lane and Adlers Lane. Soup and sausages will be available from the barbecue in the field for a small donation.

Everyone in Mickleham and Westhumble is welcome to attend along with their relatives and friends – with more people attending the charge per person can be kept down. Unfortunately costs have risen considerably, so we are asking for donations of £7 per head, including children. (Please make cheques payable to Neil Mason). Donations in advance would be appreciated, please deliver or send to:

Neil Mason  
Hillcrest, Chapel Lane  
Westhumble RH5 6AH

Neil Mason, Entertainments Secretary

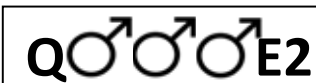
### Bonfire Building OCTOBER

Saturday 15<sup>th</sup> from 10 am  
Sunday 16<sup>th</sup> from 2 pm  
Saturday 22<sup>nd</sup> from 10 am  
Sunday 23<sup>rd</sup> from 2 pm  
FINISHING TOUCHES  
Saturday 5<sup>th</sup> November  
from 10 am

*If you have material for the bonfire (no rubbish, please) bring it to the field and leave it near the site BUT NOT BEFORE 15<sup>th</sup> OCTOBER. No YEW wood or timber with screws or nails, as these can be dangerous to animals. Unfortunately we do not have transport to collect material from around the houses.*



Can you translate this diagram into words? Say what you see.



Answer on page 26



## The Role of Tree Warden within the Parish

A year or so ago when Judy Kinloch left the parish council, she passed on the role of local Tree Warden to me – in fact, to be more accurate, she asked me if I was interested and then said she had not actually had to do anything during her tenure in the role. I accepted and so far have followed faithfully in her footsteps however, with trees coming under ever-increasing stresses from pests, diseases, our ever-drier summers and occasional storms, I thought I should make the community aware of what I can offer in the role.

To quote the Tree Council: 'The Tree Warden scheme was launched by the Tree Council in 1990 to harness the power of local volunteers for the good of their communities' trees.' It has co-ordinated it ever since, working with local authorities, voluntary organisations, parish councils and local partnerships, to set-up and develop tree warden networks in towns, cities and the countryside across the UK. Today there are many thousands of Tree Wardens throughout the country

forming a volunteer group of immense value to the environment.

The Tree Warden scheme gives people who feel that trees matter an opportunity to:

- champion their local trees and woods
- plant and care for trees
- carry out woodland management
- survey trees and gather information about them
- provide early warnings of threats, disease, decay or vandalism
- get involved with like-minded people for training and field trips
- spearhead Tree Council initiatives, such as its Hedge Tree Campaign to reverse the decline of trees in hedges

Personally, I do not profess to have the answers to all tree matters, but I can find out or point people in the right direction to find out for themselves. If you want advice on any of the above, or indeed on tree or hedges in general, please give me a call on 07546 952521 or email [davidkennington144@gmail.com](mailto:davidkennington144@gmail.com)

David Kennington

## Robust plastic carrier bags wanted for delivering parish magazines and food bank items

Please leave at food bank collection points – see page 26.

## Mickleham & Westhumble Local History Group and the St Michael's Church Community Group



Westhumble / Norbury Park  
Saturday 24<sup>th</sup> September  
and  
Mickleham / Box Hill  
Saturday 15<sup>th</sup> October

We are looking forward to seeing many of you on Saturday 24<sup>th</sup> September for the first part of our Mickleham/Westhumble Beating the Bounds. This is a custom that dates from Anglo-Saxon times when parishioners would walk around the parish boundary with the rector, to try and determine the position of the boundary for future generations. I hope that these details will help to remind you as to how you can join us.

On 24<sup>th</sup> September departure will be for those from Mickleham to leave at 9.45am from St Michael's Church to join with those starting from the Westhumble Chapel at 10.30. It is planned that there will be a lunch stop at 'Wild about Coffee', by the old sawmill in Norbury Park. The whole walk is about seven miles, but before you decide that distance is not for you, just as it may well not be for me, we

plan to arrange stopping off points and joining places for those who only want to walk part of the boundary.

Hopefully we shall arrive at the Crabtree Lane car park about 12.15 and about 1pm at the sawmill but this timing includes a stop at the viewpoint for a bit of bounds beating. Please remember to ring us if you are joining us at either of these places.

There is no need to register that you are coming but, if you decide to join at one of the stopping-off places we ask that you provide a phone number and details of your joining point. There will be guides at the front and back of the group and the pace will be that of the slowest walker. Please bring your own lunch and drink, the last is important, but we suggest you go easy on the alcohol. We would also encourage you to buy food and drinks at 'Wild about Coffee'

The walks will take place irrespective of the weather, that is unless another Storm Eunice is forecast or no-one turns up! Dogs are very welcome as long as they are under control, (please note that we may find livestock in one or two fields) and although we did consider whether this should be a fund-raising event it was felt that it was something to be left to the individual.

I hope that we have whetted your appetite to help us resurrect this ancient custom after an interval of twenty years. Please ring or email if you have any questions:

Roger Davis 07759 042406

Will Dennis 07903 842674.

Frances Presley 01306 882473

[jasempres@gmail.com](mailto:jasempres@gmail.com)

Please be aware that mobile phone reception is not reliable everywhere on the walk. Frances Presley

**Full details of Beating the Bounds around Mickleham, on Saturday 15<sup>th</sup> October will be included in the October parish magazine.**

## Macmillan Coffee Morning Friday 23<sup>rd</sup> September

10am – 1 pm

Chapel Farm, Chapel Lane, Westhumble, RH5 6AY

Once again I am holding a coffee morning as part of the Macmillan World's Biggest Coffee Morning event. Please come along, bring some friends, have a coffee and a slice of cake, and catch up with your neighbours. You are welcome to walk around the gardens and meet the animals. There will be plenty of tasty treats to take home for the weekend. We are hoping to pass the £10,000 mark this year on our fundraising, but

we cannot do this without your support. For further information please call me on 07801 791123. I look forward to seeing you in September. Liz Absalom



WE ARE  
MACMILLAN.  
CANCER SUPPORT

A series of recitals in St Michael's by talented local musicians and their friends

Sundays at Six  
9<sup>th</sup> October

## A Piano Evening

With Tracy Kennington, Caroline D'Criuz  
and other guests.

In aid of Chipembe Wildlife Education Trust,  
Luangwa National Park, Zambia

Come along at six o'clock on a Sunday evening and enjoy lovely music in the tranquil surroundings of our ancient parish church. No ticket needed – retiring collection.



## CARPET REVIVAL REVIVING CARPETS & UPHOLSTERY IN SURREY

Covering Dorking &  
all surrounding areas

We clean to a professional standard using eco-friendly chemicals and the latest equipment.

Offering a thorough survey, clean and customer satisfaction. Certified and insured.

Call 01306 740035 / 07747 122128  
or visit [www.carpetrevival.co.uk](http://www.carpetrevival.co.uk)  
to book a free home visit/quotation

## STEVE LAWRENCE

PLUMBING HEATING ELECTRICS  
Boiler installation, maintenance and repair

Based in Mickleham Local references  
30+ years' experience

07760 266718  
[stevenlaw37@hotmail.com](mailto:stevenlaw37@hotmail.com)

## Vivien Cresswell Made-to-measure Soft Furnishings

Curtains Roman Blinds Cushions

Extensive range  
of fabrics



01737 843858  
[info@cresswellscurtains.co.uk](mailto:info@cresswellscurtains.co.uk)  
[www.vivienecresswell.co.uk](http://www.vivienecresswell.co.uk)

## Rowlatt Garden Services

**RGS**  
EST.1985

**Gardens large and small  
we maintain them all**

All aspects of private and commercial garden  
and estate maintenance landscaping undertaken  
Fencing grass & hedge cutting

Telephone: 01737 841524 Mobile: 07887 838666  
References available upon request



Joseph

## De Decorators

• Painting • Decorating • Wallpapering • Plastering • Tiling  
Mickleham based 40 years' experience

01372 372331 07973 358 932



## Running for Charity

Immie Adshead is running in the  
London Marathon on Sunday 2<sup>nd</sup> October

This October I am running the London Marathon to raise money for Alopecia UK. This has a personal connection because my late aunt lost all her hair very suddenly and found herself alone with a condition that is little understood and needs much more support.

Alopecia can affect women and men at any point in life and losing your hair either slowly or abruptly is very distressing. For some the condition is temporary but for many it is permanent and can have a profound impact on confidence and all aspects of life. Alopecia UK provides support and funds research. Please support me running the London Marathon by donating to Alopecia UK through the link below.

<https://www alopecia.org.uk/Fundraisers/immies-fundrais-ing-page-for-alopecia-uk-london-marathon-2022>

## Garden Shed's Summer Activities

### Open Gardens

In June local residents and friends enjoyed visiting the seven Westhumble gardens – all diverse with different planting and ideas – open to the public (lovely and green before the drought took hold). Many took advantage of the bargains offered by the plant stalls and indulged in 'refreshments with a view' at 2 Crabtree Cottages. The event raised £825 for The Leatherhead Youth Project. A big thank you to all involved, especially those who kindly opened their gardens. Next year it will be Mickleham's turn to host this popular summer event.



### Visit to Plant Passion

Our July visit took us to a flower farm in East Clandon, where Claire warmly welcomed us and pointed out that this was a farm growing flowers as a crop and not a garden. We learned it is possible to provide stunning displays without using imported flowers, often grown using dangerous chemicals. Claire is passionate about growing flowers using sustainable methods such as no-dig beds, homemade plant feeds, no chemicals and minimal mowing. Her

aim is to be completely carbon neutral – electric vans are used for deliveries. When it was time for refreshments, she boiled the kettle by using a portable solar panel.

We were able to walk around her vast plot and wonder how she manages it all with a very small team. She grows by season, planting varieties selected for their suitability for her conditions and, where possible, scented. She takes orders for flowers and supplies

arrangements for weddings and events. In the winter she can supply dried flowers and foliage. She also offers a 'pick your own' service. See her website for more information: [www.plantpassion.co.uk](http://www.plantpassion.co.uk)

We all enjoyed the afternoon and found Claire to be a very enterprising and passionate woman who is strongly committed to her business and to the environment.

The Garden Shed team



## All About Roses

Please join us for a talk by Jacqueline Aviolet who runs a nursey in Kent.

She will cover the history of roses and all aspects of their care, including growing and pruning.

Jacqueline will be selling some of her plants on the night and those attending will have the chance to win a rose.

**Tuesday 27<sup>th</sup> September 7.30 pm The Stepping Stones Pub**

Tickets £6 on the door – all welcome – no need to book

See our website for details [www.gardenshed.club](http://www.gardenshed.club)

Booking and information

Pauline Davis 07759 646353 or [paulinemdavis@gmail.com](mailto:paulinemdavis@gmail.com)

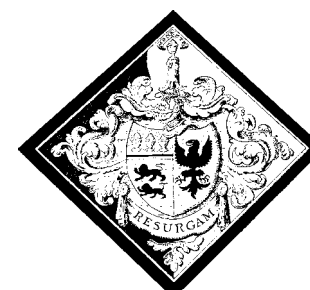


## Mickleham Choral Society's Marquee for Hire

White marquee, 10 m x 4 m  
with sides, pegs and instructions  
£50 per day (or £75 with advice)

Wine glass hire £6 per 2 doz

Call 07778 662338 or email  
[philrandles@talktalk.net](mailto:philrandles@talktalk.net)



## St Michael's Church Tour Encore Sunday 23<sup>rd</sup> October at 3 pm

Come and find out about the history of the church in Mickleham, its many artefacts and the interesting people who worshipped here.

By popular request Sue Tatham is repeating last May's church tour.

Tea and cake will be provided afterwards: please let Alison Wood know if you are planning to come on 01372 376443 or email [admin@micklehamchurch.org.uk](mailto:admin@micklehamchurch.org.uk)

No charge. Donations to St Michael's Church



## Do you need a plasterer?

Over 25 years' experience working on extensions, renovations, new-build and conversion projects for builders and domestic customers alike.



Our work is to a high standard and we are fast. Give Chris a call for a free no obligation quotation.

**CHRIS C GUY  
PLASTERING LTD**

ALL ASPECTS OF INTERNAL & EXTERNAL PLASTERING  
07740 860560 [chrisguyplastering@gmail.com](mailto:chrisguyplastering@gmail.com)

**We provide the best possible care for your feet**

**Book your appointment:  
01372 454583**



**Bookham  
Chiropody & Podiatry Clinic**  
Diagnosis, Expert Treatment & Professional Care  
for Your Feet

**29 High Street, Great Bookham KT23 4AA**  
[www.bookhamchiropody-podiatry.co.uk](http://www.bookhamchiropody-podiatry.co.uk)

## Domestic Appliance Repairs

30 years' experience repairing and installing  
all gas and electric domestic appliances



- Cookers Microwaves
- Dishwashers
- Washing machines
- Fridges / Freezers
- Water coolers
- Coffee machines
- Tumble dryers

**Contact: Andy 07895 719706**  
[andy@kirksdomestics.co.uk](mailto:andy@kirksdomestics.co.uk)



07871 051661 / 01372 458616  
[timskerrittgroundworks.co.uk](http://timskerrittgroundworks.co.uk)

**TimSkerritt**  
LANDSCAPE & GROUNDWORKS

**Turn your vision into a reality**

Tim Skerritt Landscape & Groundworks offers a comprehensive range of services to both commercial and domestic clients across Surrey.

From hard landscaping to extensive site excavations, we offer a high quality, honest, reliable and competitively priced service, guaranteed to meet all your needs. Contact us today to find out more.



**SURREY HILLS  
HEATING LTD**

**DOMESTIC BOILER SERVICING  
AND BREAKDOWN**

**OIL, LPG & GAS BOILERS**

Call Dathan on: 07944 575970  
[sales@surreyhillsh heating.co.uk](mailto:sales@surreyhillsh heating.co.uk)  
[www.surreyhillsh heating.co.uk](http://www.surreyhillsh heating.co.uk)



**PAINTING  
DECORATING**

ANDREW CLARK 07800 796 737

INTERIOR & EXTERIOR • CARPENTRY • HANDYMAN

## CRYPTIC DELICACIES

July's puzzle featured golden squares that when unscrambled gave you the theme of BUZZ ALDRIN and pointed to his involvement in the GEMINI and APOLLO space programs as well as the fact that after landing on the moon he went on to become a USED CAR SALESMAN. After leaving NASA he'd struggled with depression and alcoholism and his therapist encouraged him to get a regular job. This did not last. He had been able to get to the moon but in a period of six months he couldn't sell a single Cadillac in Beverly Hills. After managing to work his way through his troubles, he re-engaged with space and for the 40<sup>th</sup> anniversary of his moon landing he released a rap single called ROCKET EXPERIENCE— the video on YouTube showing him in the studio with Snoop Dogg is a thing of joy. He had two and a half hours on the moon, could have died at any moment (at one point he had to use a felt-tip pen as a circuit breaker when a switch broke in the lunar module), but 63 years later he's still here and still enthusiastic for space. And as if he's not immortal enough, Buzz Lightyear from Toy Story was named after the nickname that came from his sister only being able to say 'buzzer' instead of 'brother'.

Here are some of the clues worked out, with definitions underlined:

**23 God, it takes a mint to eat little starter! (6)**

**APOLLO**

'a mint' = A POLO, which eats or takes in 'little starter' = first letter of 'Little' = L.

**22 Belt the last character to join United (4)**

**ZONE**

'the last character' = Z (as in the end of the alphabet), 'United' = ONE. 'Belt' is as in 'green belt', i.e. the zone that is protected from development.

**13 Nancy's number can be derived from 22 - added to 23 it becomes significant to the one of the golden squares (4)**

**ONZE**

Nancy is as in the French city, so 'Nancy's number' is a French number (this trick is not of my invention! - see the Guardian crossword blog about Foreign Words, from February 2013). Clue 22 (as above) = ZONE – the only French number that can be derived from those letters is ONZE = 11. Added to clue 23 (as above) gives you Apollo 11 which is the mission that took Buzz Aldrin to the moon. (Both ONZE & ZONE got added at the last minute when I realised that I needed two Zs for the golden squares).

**18 Plant acorn whilst secretly holding a corn product (4)**

**TACO**

A hidden word held secretly within 'PlanT ACOrn'.

**8 Once had money to gobble soft cheese without needing head of bank's know-how (10)**

**EXPERIENCE**

'Once' = EX, 'money' = PENCE, 'soft cheese' = Brie, 'head of Bank' = B which is not needed in the cheese leaving RIE, which is then gobbled up



or taken in by PENCE to get EX-PE-RIE-NCE. I hope you appreciate me narrowing down the type of cheese to 'soft' which was almost a guarantee that it would be Brie (it wasn't going to be Camembert or Philadelphia).

**16 Son tests perverse items that hold 37.85411784 liters or 45.5609 litres (8) STETSONS**

'perverse' points to an anagram of SON TESTS, and then I was in a quandary about how to point to STETSONS, also known as ten gallon hats, given that 10 gallons is different in the USA & the UK, and no-one would know the conversion from the more relevant US gallons. In the end I included the conversions from US gallons and imperial gallons along with liters and litres to give some sort of clue to latch onto.

**21 Excuse me, source of illumination, can that get you drunk? (5)**

**OILED**

'Excuse me' = OI (though possibly exhibiting less politeness), 'source of illumination' = LED (light emitting diode). This one really tickled me – you'd have to be quite drunk to shout at a light: 'OI, LED!'

I hope this helps and it would be great to get any feedback via [andrewt@andrewtatham.co.uk](mailto:andrewt@andrewtatham.co.uk) Andrew

## Mickleham and Westhumble Badminton Club New Members Welcome

Mickleham and Westhumble Badminton Club has recently celebrated its fourth birthday and is a lively and welcoming club, meeting at the first-class facilities offered at Box Hill School's new Sports Centre. The club meets on Wednesday evenings between 6pm and 8pm in term time and 7pm to 9pm during the summer holidays. The club welcomes both those wishing to play badminton for the first time and also more experienced players. Social events are also held, including a Summer Barbecue and a Christmas Social. There are a few vacancies at present. The annual subscription is currently £105. If you are interested, please contact Sarah Blake on [tinkerbello044@hotmail.com](mailto:tinkerbello044@hotmail.com)



Photograph: Angela Ireland



**10 Year**  
Manufacturer's  
warranty available  
with any new boiler  
Oil, LPG and Gas Registered • Consult • Design • Install • Maintain

**SEENERGY**  
INNOVATIVE ENERGY SOLUTIONS

Call for a free quote on  
**01306 735499**  
[www.seenergy.co.uk](http://www.seenergy.co.uk)  
[enquiries@seenergy.co.uk](mailto:enquiries@seenergy.co.uk)

EMERGENCY  
24  
HOUR  
SERVICE

Best Buy  
Which?  
Gas Boilers September 2008

**Get IT Fixed, Get IT Connected**  
Expert Repair & Maintenance



Brockham based. No call out charges. Fully transparent quotations with no hidden costs. We make technology work for you.

Call us now on **01737 845980** ChalkHill Systems  
[www.chalkhillsystems.co.uk](http://www.chalkhillsystems.co.uk)

**M & R BUTLER**

- GENERAL HOUSE MAINTENANCE
- EXTERNAL & INTERNAL DECORATING
- BESPOKE CARPENTRY
- LOCAL REFERENCES
- 40+ YEARS EXPERIENCE

07776256131 / 07896015771



**TONY WINCH**  
CARPENTER, JOINER  
& CABINET MAKER  
[www.tonywinch.com](http://www.tonywinch.com)  
**01306 742373**  
**07969 016 924**

**Building Plans**  
For home improvements & extensions  
Including planning & building regulations  
Fast efficient service at competitive rates

**MICHAEL LLOYD** CEng MICE  
For free consultation:  
Phone: 01483 205479 or 07958 791 402

**RWP**  
Extensions and alterations often require a  
Structural Engineer

**Robert Wynter & Partners Ltd**  
**01306 879875**  
Book House Vincent Lane  
Dorking RH4 3HW

**remedial roofing**  
For people with roof issues and deficiencies

- New roofs – slate & tiled roof specialists
- All roof repairs moss removal & gutter clearance
- Flat roofs traditional felt & GRP fibreglass
- New uPVC Fascia soffit & guttering

Obtain an up-to-date report of remedial roofing on [www.checkatrade.com](http://www.checkatrade.com)

**ALL WORK GUARANTEED**  
Call us today for a FREE quotation on:  
**01306 304736 | 07852 833802**  
[info@remedialroofing.co.uk](mailto:info@remedialroofing.co.uk) [www.remedialroofing.co.uk](http://www.remedialroofing.co.uk)




Our final few days of the summer term had us trying to invent ways to keep cool. At nursery we don't require a uniform, so the children can don

their beachwear for morning activities, usually lots of water play and building sandcastles in our large sandpit. Utilising the shady grass area outside the nursery and with some time adjustment, we were able to continue with sports days and our Enormous Turnip play. We had several visits from Klara Taussig, local storyteller @dalewoodstudio, from Verity Holloway with her cello and also had some chill out time laying on the cool floor of the hall relaxing our bodies to Tai Chi music. A few children almost fell asleep, several more found being still most challenging. Finally, we welcomed Gordon the Magician for our leavers party.

I am sorry to say that unfortunately the Mickleham foxes did indeed realise that

the nursery chickens had returned. I suspect after several surveying visits they managed to find a weak point in our enclosure. Little children are surprisingly able to manage the matter-of-fact nature of life cycles and understand that foxes have babies that they need to feed too. However, some work will need to be carried out on our chicken enclosure before we replenish stock.

Not quite the same as replenishing stock, but we are excited to welcome 21 new children who are joining us during the autumn term. Some are siblings who already know the nursery well and some are families new to both the nursery and the delights of Mickleham and Westhumble. Welcome to you all!

Hilary Budd



Clockwise from top left: Verity Holloway, cellist; storyteller Klara Taussig; Gordon the Magician; and Hilary with two prize winners from the village horticultural show





## Mickleham Village Hall Dell Close

Weekdays 9.15 am - 12.15 pm (term time)

### WITH OPTIONAL LUNCH CLUB

On Mondays and Thursdays there is the option for children to stay until 2.45 p.m.

Maximum 26 children per session

• playing naturally • learning naturally

We offer an excellent range of pre-school activities for 2½ to 5 year-olds where they can learn through play in an informal friendly atmosphere.

Contact us for more information about admissions

01372 361021 [www.stmichaelscommunitynursery.co.uk](http://www.stmichaelscommunitynursery.co.uk)

## Solution to the July-August crossword

**Across:** 1 Bad egg 5 Unfasten 9 Consommé 10 Abrupt 11 Windcheaters 13 Onze 14 Ricochet 17 Dementia 18 Taco 20 Fly on the wall 23 Apollo 24 Mutation 25 Trades in 26 Rocket.

**Down:** 2 Amok 3 Elsewhere 4 Gemini 5 Used car salesman 6 Flamenco 7 Sprat 8 Experience 12 Interloper 15 Catalytic 16 Stetsons 19 Batter 21 Oiled 22 Zone.

## BRAIN TEASER answer: Three men in a boat

## Suitable items for the foodbank collection

Tinned veg / tomatoes / soup / sauces / baked beans	Washing-up and cleaning products
Powdered milk / UHT milk (green and blue only)	Tissues / paper towels / tampons
Rice pudding / long life sponge puddings	Men's / women's toiletries
Coffee / tea bags / long life fruit juice	Laundry products
Pasta / rice / pulses / instant mash	Nappies
Jam / honey / marmalade / spreads	Pet food
Sugar (500g bags only)	

**Please do not include  
out-of-date items or those  
that require refrigeration**



### LOCAL FOOD BANK COLLECTION POINTS

#### MICKLEHAM

Garden Corner off Old London Road  
Mary Banfield 01372 373912

#### WESTHUMBLE

St Anthony Pilgrims Way  
Sue Tatham 01306 882547



## Running for Charity

Gary Lloyd will be in action again but only a half marathon this time! He will be running the Great North Run, to be held in Newcastle on 11<sup>th</sup> September. He will be fundraising for Prostate Cancer UK and, if anyone would like to support this excellent charity, the link is:

<https://www.justgiving.com/fundraising/great-north-run-2022-9807>

On 16<sup>th</sup> October, Gary is due to take part in the Great South Run (10k) in Portsmouth. Then he plans to take a holiday!

## End of Year

What a wonderful end of term we had. Sports Day with a family picnic afterwards, a school trip to the Rural Life Centre in Telford and the end of term service at the church led by our Year 2 class. They did a fantastic job saying goodbye with lots of singing and retelling their favourite memories of their time at St Michael's. One recounted finding a slug in his salad!

The end of the summer term is always bittersweet. It is joyful to see how much the children have grown and progressed. They certainly seem ready to take that next step in their educational journey. It is also sad to see the Year 2s go as they have been such an important part of the school. We shall miss them.

We now start looking forward to a new academic year and welcoming our new cohort of reception children. They have had several visit days, and all seemed very relaxed and happy to spend time in their 'big' school.

Our current Year R and Year 1s, also enjoyed spending time in their new classrooms. At the beginning of the year all the children feel a little nervous to start with but soon warm up.

In the coming year we are planning a full calendar of events, many including families and there will be more visits to the church. Here's to a great academic year ahead!

As usual the summer break has been used to carry out work on the site. This



**St Michael's  
School**

[stmichaels-dorking.surrey.sch.uk/](http://stmichaels-dorking.surrey.sch.uk/)

year, with the help of a grant from the diocese, we have installed LED lighting throughout the building and grounds. Outside, the shed has been replaced. This was paid for by the Friends of St Michael's School who often supply equipment the school could not afford otherwise.

Nicola Cleather  
Head of School

## Summer Show Winner



First prize winning decorated fairy cakes  
by Verity Ward aged 5



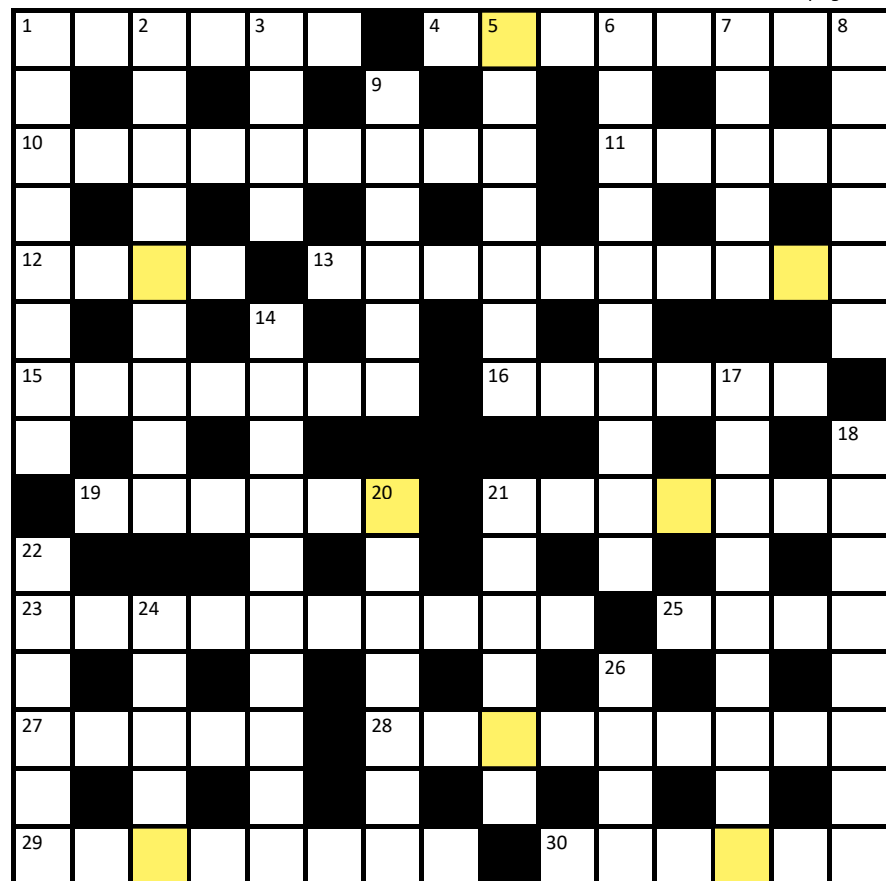


# Cryptic Crossword

Answers to last month's crossword are on page 26.

## Across

- 1 Wretched? Time to reverse to Havana (6)
- 4 Obviously he is able to be heard speaking with vulgarity from the island (8)
- 10 Sooty puts on lots of metal rings as protection from being exposed (9)
- 11 Quarrel resolved by using oversized courgette if not married (5)
- 12 Alone? Then moo like a cow loudly (4)
- 13 Pike often seems immature in the presence of this stalwart water bearer with a phone (10)
- 15 Burns diminutive fragments in little hoppers (7)
- 16 Esteemed colonisers, here is a display of oomph, greeting and bunkum (6)
- 19 What creates an image is hidden inside a secret in a mystery in an enigma (6)
- 21 Sprawling building for politician in merry royal times (7)
- 23 Sensual? Cultivate the novel if not a fan of submission (6,4)
- 25 For variety, put a load of words into a computer (4)
- 27 Former inhabitant of 11 is like a leprechaun that has placed its head in its behind (5)
- 28 Cover stretchers to provide suitable places for cases (4,5)



- 29 Restaurant visitor may do an impression of someone spectacular (8)
  - 30 Harry's lost money to those keeping safe in a bank (6)
- Down
- 1 Bees tour aberrant organisation. Indeed. (2,2,4)
  - 2 Free to misrepresent via a label (9)
  - 3 Being excessively meticulous about being guillotined is disgusting (4)

- 5 School alumnus pines for quadrangles (7)
- 6 Shame at toy being played with when not inclined to go into the office (4-2-4)
- 7 Love a duck, soldier - that's particularly what the queen likes! (5)
- 8 Recent weather is astrologically woo-woo (3,3)
- 9 Badger is acting in personnel department as head of security (6)
- 14 Confusingly I limit arms as well as glorifying the army (10)
- 17 Pain in the guts? Yell 'Beach!' with wild abandon (9)
- 18 Outgoings from old members having number one out of sight (8)
- 20 Initially two-times Andrew Tatham then finds it raises sir's temper (2,5)
- 21 Charlie gives you what puts lead in your pencil (6)
- 22 Feeling of loathing? It's essential to evaporate that red mist (6)
- 24 Brand created by him is found in 16' enclosure (5)
- 26 Pluck small pebbles from drive (4)

Andrew Tatham

Open Gardens visitors enjoying Pauline Davis' prize-winning garden, refreshments and the glorious view from the top of Crabtree Lane.

Photograph: Susie Gowenlock





**RESIDENTIAL • COMMERCIAL  
AGRICULTURAL • SCHOOLS • ACOUSTIC  
HOARDING • GATES • SECURITY**

**RICHARDSON & BRADS FENCING LTD**  
**T: 01306 640 143 - 01483 414 745**  
 E: [INFO@RBFENCINGLTD.CO.UK](mailto:INFO@RBFENCINGLTD.CO.UK)  
 W: [WWW.RBFENCINGLTD.CO.UK](http://WWW.RBFENCINGLTD.CO.UK)  
 A: 168 SOUTH STREET, DORKING, SURREY, RH4 2ES  
 UNIT 45 MARTLANDS INDUSTRIAL ESTATE, SMARTS HEATH LANE, MAYFORD, GU22 0RQ

**J S Wilson**  
 Mickleham

**Carpentry & Building  
Services**

Extensions ~ Conversions  
 Refurbishments ~ Property Maintenance  
 Fully guaranteed ~ Fully insured  
*One call WILL solve it all*

Contact Jason on: 07761 926684 or 01372 379359  
[info@jasonswilson.co.uk](mailto:info@jasonswilson.co.uk)



**MEABY&Co**  
 solicitors

**Strength & wisdom in law & business since 1848**

Meaby & Co Solicitors sits proudly in the heart of Dorking High Street providing expert legal advice to individuals and businesses throughout the town and its surrounding area. With additional offices throughout London, our experienced team, our 5\* Google reviews and award winning service will ensure that all of your legal needs are supported on your doorstep.

**Specialising in:**

Residential & Commercial Property	Fraud & Private Crime	Reputation Protection
Wills, Trusts & Probate	LGBT Experts	Commercial & Corporate Law
Litigation and Mediation	Employment Law	Media & Entertainment
Crisis Management	Family & Divorce Law	Lease Extensions

Drop by our offices at 159 High Street, Dorking RH4 1AD or contact our switchboard on 01306 884432. Need advice elsewhere? We can assist. We have branch offices in Camberwell, Soho & Chigwell.

**Switchboard:** 01306 884432 [www.meaby.co.uk](http://www.meaby.co.uk) @MeabyandCo meaby-&-co MeabyandCo meabyandco



## Need help with your accounts?

Running a business needs time and energy – don't waste your time working on your accounts when you can work on your business instead!

At a4c we provide fixed fee accountancy solutions with friendly support throughout the year. Services include accounts tax returns VAT payroll book-keeping etc.

Friendly approachable and local to Dorking – we enjoy getting to know our clients so call us today for a no obligation chat.

**We LOVE numbers so YOU don't have to!**

**01737 652852**

[esther@a4cgroup.co.uk](mailto:esther@a4cgroup.co.uk)

[www.a4cgroup.co.uk](http://www.a4cgroup.co.uk)



# 01306 88 55 33

**For quotes or to make a booking  
email us on: [Enquiries@dorkingtaxis.co.uk](mailto:Enquiries@dorkingtaxis.co.uk)**

**[www.dorkingtaxis.co.uk](http://www.dorkingtaxis.co.uk)**

- 4 / 6 / 8 Seaters
- Airport specialists
- Ferry ports & Eurostar
- Courier services available
- Home to School Transport service available
- Long distance journeys welcome
- All drivers & vehicles are fully vetted by MVDC & Surrey County Council
- Lady drivers available on request
- All major card payments accepted



**RANMORE  
RENOVATIONS**

## LOCAL BUILDER

New bathroom installation  
specialist

plumbing/heating

electrics plastering & tiling

decorating Karndean flooring.

All building works and property  
maintenance undertaken.

All works guaranteed

36 years' experience

Please contact Damian

07940 599845 / 01306 880332

[musgrovebuild@gmail.com](mailto:musgrovebuild@gmail.com)



# Home Instead®

A local award-winning business supporting people living in Epsom and Mole Valley enabling them to remain living independently AT HOME as well as providing companionship and colour to peoples lives.

**RATED AS OUTSTANDING BY CARE QUALITY COMMISSION**

Committed to providing a quality trusted and consistent home care service we only recruit local CareGivers and match every CareGiver to every client so the same person will call each time.

**01372 741544**

[simon.burrowes@homeinstead-epsom.co.uk](mailto:simon.burrowes@homeinstead-epsom.co.uk)

[www.homeinstead.co.uk/epsom](http://www.homeinstead.co.uk/epsom)

# John Wadsworth



**CALL NOW FOR YOUR FREE VALUATION**

**01372 450500**

[www.johnwadsworth.co.uk](http://www.johnwadsworth.co.uk) [sales@johnwadsworth.co.uk](mailto:sales@johnwadsworth.co.uk)

*A professional efficient and friendly service*