

# Housekeeping

- Please remain muted
- Please turn off video
- Please leave questions until the end of the presentation
  - Q & A session at the end will be open to all participants
  - Chat feature – use ‘everyone’
  - Raise hand feature also – host will invite you to talk
  - If dialled in via phone – listening only
- Slides will be shared via Woore Parish Website or by emailing [clerk@wooreparishcouncil.org](mailto:clerk@wooreparishcouncil.org)
- Recording
  - This is for the purpose of posting a digital recording of the event on the Woore Parish Website for residents to watch post event.
  - There is no obligation to appear or speak during the event.
  - Request that video is turned off to protect privacy
  - Option to participate under an alias – rename (top right)
  - If you choose to participate in an identifiable way, you are authorising the use of the recording as described.

18<sup>th</sup> February 2021, 7.00pm

# HS2 Phase 2a Consultation Community Update

On behalf of Woore Parish Action Group,  
with the support of Woore Parish Council

**HS2**





# Presenters

## **Gaynor Irwin**

Representative Woore Parish Action Group  
Councillor, Woore Parish Council (WPC)  
Representative, WPC HS2 Working Party

## **Michael Cowey**

Chairman, Woore Parish Council (WPC)  
Representative, WPC HS2 Working Party

# HS2 Phase 2a Consultation (West Midlands to Crewe)

## What is the consultation?

- Following the inclusion in the HS2 Phase 2 Hybrid Bill of amendments proposed in the House of Lords, HS2 started a new consultation with the affected residents of Staffordshire, South Cheshire and North Shropshire.
- Leaflets started to be delivered by post to households along the Phase 2a route during week commencing 1st February, inviting local people to provide feedback via the completion of an online questionnaire.
- Alternatively, residents could respond by email or post.

The 4th paragraph on page one of the leaflet contained the following statement, that undermined the consultation process:

Given the extensive consultation already undertaken for Phase 2a and consideration of the scheme by both Select Committees in Parliament, the Government does not intend to make changes to the Phase 2a scheme or to its planned construction programme in light of this consultation.

Following complaints by multiple organisations to local MPs, HS2 issued a second leaflet on Monday 8th February, which presented an entirely different tone.

# HS2

## HS2 Phase 2a Consultation

### West Midlands to Crewe

February 2021

High Speed Two (HS2) is the new high speed railway for Britain. Phase 2a is the section of the planned railway between the West Midlands and Crewe, passing through parts of Staffordshire and Cheshire. This leaflet explains the consultation that has been launched by the Government following an amendment to the Phase 2a hybrid Bill during its passage through the House of Lords. It also sets out where you can find more information about the consultation and how to respond to it.

During its passage through the House of Lords, an amendment to the Phase 2a Bill was made requiring a further consultation on a variety of topics including the impact of road traffic as a result of our work, the impact of our work on the natural environment, transport provisions for passengers connecting to Phase 2a, and whether new railway stations, improvements to existing railway stations, and the reopening of associated lines is necessary to support passenger connections to Phase 2a.


Responses to this consultation will help inform Government policy on HS2 Phase 2a and the environment and on future proposals for services on HS2 Phase 2a and the conventional rail (i.e. Network Rail network) and other transport networks.

Given the extensive consultation already undertaken for Phase 2a and consideration of the scheme by both Select Committees in Parliament, the Government does not intend to make changes to the Phase 2a scheme or to its planned construction programme in light of this consultation.

The consultation will close at 11:45pm on Friday, 26 February 2021.

#### Where to find more information

- You can access the consultation documents at: [www.hs2.org.uk/phase2a](http://www.hs2.org.uk/phase2a)
- You can respond to the consultation at: <https://ipsos.uk/hs2phase2aconsultation>
- Or by email to: [HS2Phase2aConsultation@ipsos-mori.com](mailto:HS2Phase2aConsultation@ipsos-mori.com)
- Or by post using: FREEPOST HS2 PHASE 2A CONSULTATION



P5

# HS2

## HS2 Phase 2a Consultation

West Midlands to Crewe  
February 2021

We recently sent you a leaflet about the consultation that has been launched by the Government regarding HS2 Phase 2a, the new high-speed railway between the West Midlands and Crewe.

This leaflet explains more about the purpose of the consultation and next steps.

After many years of development and extensive consultation, we expect the Phase 2a scheme to soon achieve Royal Assent and become an Act. However, the passing of the Bill does not mean the end of engagement with local communities. Indeed, it is only the beginning of a renewed effort to try to mitigate the impacts of the HS2 works on them.

After discussions with Parliamentarians, we have decided to undertake further consultation on a variety of issues. This includes the impact of HS2 on the natural environment, HS2 traffic due to the construction work and seeks views on local transport provision and whether upgrades to existing railway stations, new railway stations or new rail lines are needed to connect to the scheme.

### Have your say on HS2 in your area

Responses to this consultation will help us understand in more detail the environmental impacts of the scheme on local communities as we take the scheme forwards, and to identify and implement further mitigation measures.

As we move into detailed design of the Phase 2a scheme it is vital that we understand fully the concerns and needs of local communities. We want to work with them to design a scheme that addresses the concerns of residents and which results in a railway we can be proud of. HS2 Ltd's aspiration is to be a good neighbour every single day, by respecting the people and communities we impact and being sensitive to their needs.

Your responses will help us better understand the concerns of local communities on their local transport provision. It will help inform Government policy on HS2 Phase 2a and the environment, and on future proposals for services on HS2 Phase 2a and the conventional rail (i.e. the Network Rail network) and other transport networks.

Once the responses are analysed we will publish a summary report and set out how we propose to address the issues raised.

Engagement with affected communities is at the heart of our plans for HS2 and it is our commitment to ensure we listen to those affected by the scheme. We look forward to hearing your views in response to this consultation.

### Key information

The consultation will close at 11:45pm on Friday, 26 February 2021.

You can access the consultation documents at [www.hs2.org.uk/phase2a](https://www.hs2.org.uk/phase2a)

You can respond to the consultation at <https://ipsos.uk/hs2phase2aconsultation>

Or by email to [HS2Phase2aConsultation@ipsos-mori.com](mailto:HS2Phase2aConsultation@ipsos-mori.com)

Or by post using  
**FREEPOST  
HS2 PHASE 2A  
CONSULTATION**

# HS2

February 2021

## High Speed Two Phase 2a: West Midlands to Crewe

Consultation under clause 60 of the  
High Speed Rail (West Midlands – Crewe)  
Bill as amended in the House of Lords

### Response form

We are seeking your views under clause 60 of the High Speed Rail (West Midlands – Crewe) Bill as amended in the House of Lords.

You can respond to the consultation in the following ways:

Online: <https://ipsos.uk/hs2phase2aconsultation>

Email: [HS2Phase2aConsultation@ipsos-mori.com](mailto:HS2Phase2aConsultation@ipsos-mori.com)

Post: **FREEPOST HS2 PHASE 2A CONSULTATION**

This consultation will close at 11:45pm on Friday 26 February 2021.

For more information about the consultation, please visit our website [www.hs2.org.uk/phase2a](https://www.hs2.org.uk/phase2a) or call our Helpdesk on 08001 434 434.

Please write your response clearly in black ink within the boxes below and, if you need to, attach additional information to the response form ensuring you clearly state the question you are answering.



# Why should residents take part?

- WPAG and Woore Parish Council recommends that all residents take part in this consultation
- Need to show HS2 and the Government that the people affected by this project have a voice that should be listened to and taken into account
- Rt Hon Owen Paterson (MP), is scheduled a meeting with Andrew Stephenson (HS2 Minister) to discuss mitigations for the Parish. He is the only MP to be granted this meeting.
- Royal Ascent granted on 12<sup>th</sup> February 2021, securing the power to begin construction on the railway between West Midlands and Crewe

This is now more important than ever!

# Why is this happening now?

- WPAG and Woore Parish Council have campaigned for over four years, with the primary objective of altering the route for construction traffic.
- WPC have presented detailed petitions to the Select Committee in the House of Lords & House of Commons with evidence in support of an alternative route.
- Lobbied MPs for support of the amendment for consultation, as a last attempt to be heard.
- Residents can read the detailed background if they wish: <http://www.wooreparishcouncil.org/community/woore-parish-council-10149/high-speed-rail/>



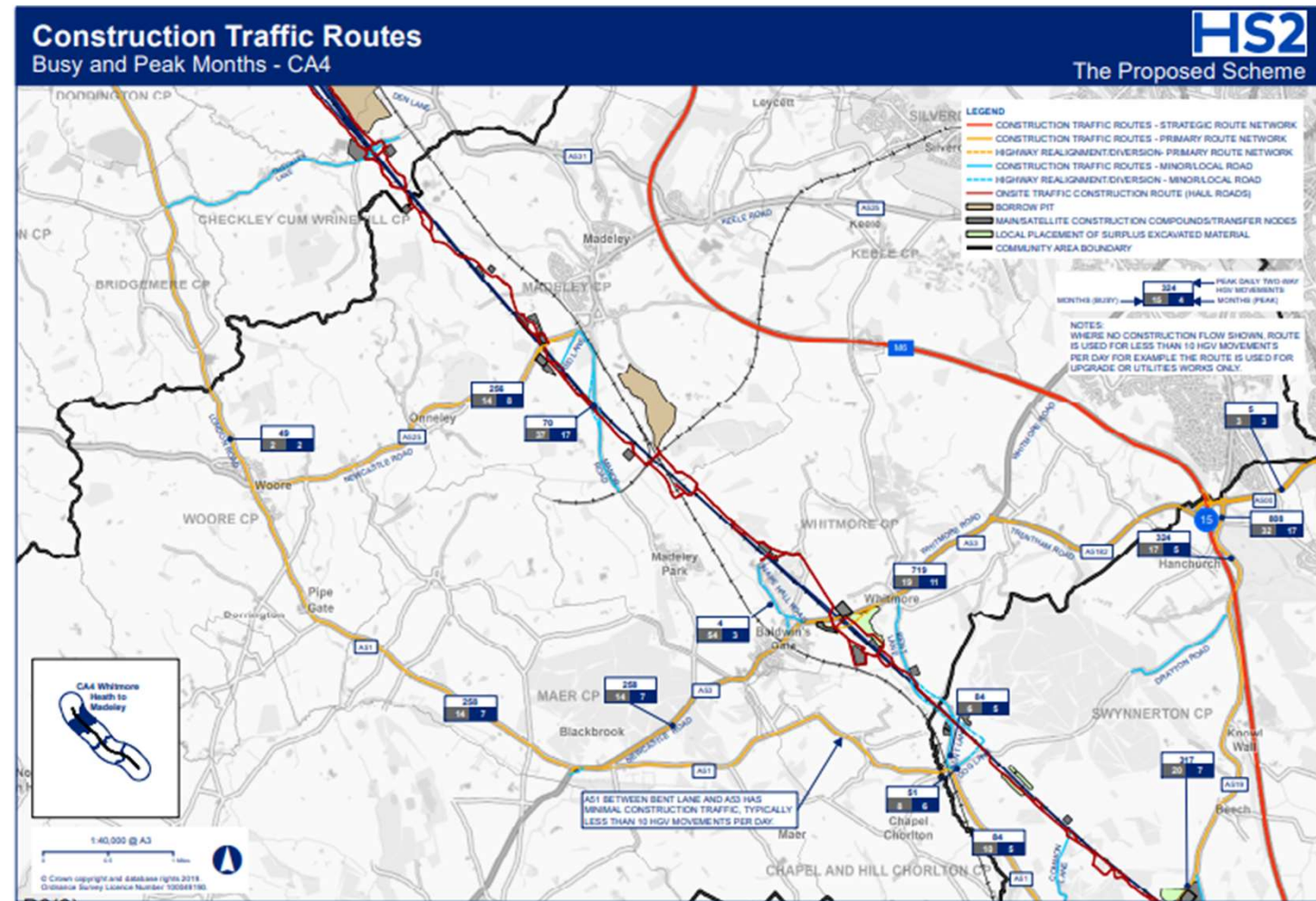
# What is Phase 2a?

- HS2 is a new high speed railway linking up London, the Midlands, the North and Scotland serving over 25 stations, including eight of Britain's 10 largest cities
- Phase 1 is well underway
- Preliminary work on the Phase 2a route has already begun, in the form of Ground Investigation work
  - Began in November 2020 and will take several months to complete
- In spring 2021 work will begin to prepare the land ready for the construction of the railway
  - Includes further surveys, utility diversions, archaeological digs, tree planting, ecological habitat creation and work on the highways
- The main construction programme is not due to start until 2023 and over the next two years HS2 will be preparing the final design of the railway
- Construction is scheduled to take 7-10 years in total

# What is Phase 2a?

- Phase 2a will consist of;
  - 36 miles of track
  - 1 maintenance base
  - 2 tunnels
  - 36 embankments
  - 26 cuttings
  - 17 viaducts
  - 65 bridges
- Woore Parish will be on the heavy vehicle construction route when work commences, meaning;
  - Unlimited number of trucks per day
  - 5.5 days per week, 10 hr working day
  - HS2 have the option to increase both!

What is the  
construction  
route through  
Woore Parish?



# What are our concerns?

- Safety of the Parishioners - school children, residents and vulnerable persons
- Traffic calming measures - speed & control
- Maintaining access to services - parking & access
- Providing safe routes through the Parish - crossings & pathways
- Ensuring safety of side roads/alternative routes
- Wildlife and environment protection
- Ongoing control and maintenance - deterioration of road & monitoring and reporting concerns

# Traffic Mitigation Measures in Woore Parish?

- Woore Parish Council is actively pursuing mitigation/intervention measures to protect the wellbeing and safety of Parishioners
- Ongoing discussions with HS2 and Shropshire Council to secure what it considers to be essential
- Ground gained to date and some are already approved
- Many still require the support of Shropshire Council and HS2

# Traffic Mitigation Measures in Woore Parish?

- Pedestrian Guardrail (pedestrian crossing near school)
- The existing signalised crossing outside school from pelican to puffin
- School roundel markings installed in carriageway
- Secondary school drop off & pick- up point
- Speed Limit at 30mph through Parish (20mph outside school)
- Flashing Ambers for 20mph school speed limit
- Traffic calming outside Woore Village (signs on road etc.)
- All entries to Parish have Gateways (5no)
- A51/A525 Junction Safety Improvements (still more requirements)
- Convex Mirrors exits at Pipe Gate

# Traffic Mitigation Measures in Woore Parish?

- Temporary Car Parking in Woore Village
- Crossing Points on A51 from Pipe Gate to Woore
- Crossing Points on A525 from Junction to Gravenhunger crossroad
- Crossing Point in Pipe Gate (possible zebra crossing)
- Traffic Control Measures at Gravenhunger Lane, Candle Lane, Cherry Tree Lane & Bearstone Lane
- Pollution Measurement Station
- Established replacement Hedges for Passing Points



# Traffic Mitigation Measures in Woore Parish?

- Hedges Overgrowing Footpaths (Shropshire Council agreed it was their responsibility)
- Road Safety Audit
- Accelerated deterioration of Highway, such as carriageway surfaces, gulley covers, manholes, kerbs, repair potholes etc.
- HGV's Compliant Spot Checks
- HGV Traffic Volume measurement against Histogram
- Joint Co-ordinated Committee (WPC/HS2/WM Police/LHA

# Completing the consultation form

- Question A - Road traffic - **FOCUS!**
- Question B - Environmental impact

Woodland Trust - <https://www.woodlandtrust.org.uk/>

Shropshire Wildlife Trust - <https://www.shropshirewildlifetrust.org.uk/>

Staffordshire Wildlife Trust - <https://www.staffs-wildlife.org.uk/>

Cheshire Wildlife Trust - <https://www.cheshirewildlifetrust.org.uk/>

- Question C - Rail connectivity
- Question D – Re-opening old railway lines and stations

# Completing the consultation form

## Question A

### Question A – Road Traffic

**Please let us know your comments on the impact of road traffic as a result of the HS2 Phase 2a works.**

Tick Box - **CA4 Whitmore Heath to Madeley**

#### **Header**

Woore Parish Shropshire includes Woore, Pipe Gate, Gravenhunger, Dorrington, Ireland's Cross, Bearstone and part of Onneley.

Woore Parish Council believes HS2 have underestimated the number of HGV movements on local roads including the A51 and A525. However even if we take HS2's own calculations on the last published Histogram, then the impact on these roads will be huge.

# Completing the consultation form

## Question A

To date, HS2 have given Undertakings and Assurances as gained in the House of Commons Select Committee Recommendations as well as the House of Lords Select Committee Recommendations, as follows:

C16.1 Restricted Vehicle Access Pipe Gate “slip road” old A51

C16.2 Traffic Calming Measures, no Agreement with WPC/SC then Design Package 2 to be installed for Village of Woore only:

- Road Marking and signage measures at school and uncontrolled crossing points
- Vehicle Activated Signs, road marking and coloured surfacing and speed gateway upgrades
- Modifications to A51/A525 junction to accommodate safe turning movements during construction
- A new zebra crossing close to the A51/A525 junction
- Upgrade of existing signalised crossing outside school from a pelican crossing to a puffin crossing
- Footway improvements close to the Falcon Inn (hedge cut back)

C16.3 Provision of School Crossing Patrol Officer

# Completing the consultation form

## Question A

Further requirements include;

- Pedestrian Guardrail (pedestrian crossing near school)
- The existing signalised crossing outside school from pelican to puffin
- School roundel markings installed in carriageway
- Secondary school drop off & pick- up point
- Speed Limit at 30mph through Parish (20mph outside school)
- Flashing Ambers for 20mph school speed limit
- Traffic calming outside Woore Village (signs on road etc.)
- All entries to Parish have Gateways (5no)
- A51/A525 Junction Safety Improvements (still more requirements)
- Convex Mirrors exits at Pipe Gate
- Temporary Car Parking in Woore Village
- Crossing Points on A51 from Pipe Gate to Woore
- Crossing Points on A525 from Junction to Gravenhunger crossroad
- Crossing Point in Pipe Gate (possible zebra crossing)
- Traffic Control Measures at Gravenhunger Lane, Candle Lane, Cherry Tree Lane & Bearstone Lane
- Pollution Measurement Station
- Established replacement Hedges for Passing Points
- Hedges Overgrowing Footpaths (Shropshire Council agreed it was their responsibility)
- Road Safety Audit
- Accelerated deterioration of Highway, such as carriageway surfaces, gulley covers, manholes, kerbs, repair potholes etc.
- HGV's Compliant Spot Checks
- HGV Traffic Volume measurement against Histogram
- Joint Co-ordinated Committee (WPC/HS2/WM Police/LHA)

Completing the  
consultation  
form

Submitting the  
form

- FREEPOST
  - No stamp required
  - Use capital letters
  - Responses considered as long as posted via FREEPOST before the deadline
- Online version of the form is available at
  - <https://ipsos.uk/hs2phase2aconsultation>
- Email response to
  - [HS2Phase2aConsultation@ipsos-mori.com](mailto:HS2Phase2aConsultation@ipsos-mori.com)

**Consultation closes at 11:45PM on Friday 26<sup>th</sup> February 2021.**

**Only use methods above.**

Completing the  
consultation  
form

Remain  
informed

- Website [www.hs2.org.uk](http://www.hs2.org.uk)
- Freephone 08081 434 434
- Email [hs2enquireies@hs2.org.uk](mailto:hs2enquireies@hs2.org.uk)
- Register for updates in your area: [www.hs2inyourarea.co.uk](http://www.hs2inyourarea.co.uk)
- Woore Parish Website [www.wooreparishcouncil.org](http://www.wooreparishcouncil.org)
  - HS2 tab
- Woore Parish Council Facebook page  
<https://www.facebook.com/woore.parish.1>
- Email [clerk@wooreparishcouncil.org](mailto:clerk@wooreparishcouncil.org)



Completing the  
consultation  
form

Background  
information

- Residents can read the detailed background if they wish:  
<http://www.wooreparishcouncil.org/community/woore-parish-council-10149/high-speed-rail/>

- Transport Committee, Wednesday 6 January 2021

Meeting started at 9.30am, ended 12.04pm

Please visit the following link to listen:

<https://www.parliamentlive.tv/Event/Index/758ddcb0-db0a-4b11-b07f-3067e1adc625>

## Further information

## Funding for communities & businesses

- Obtaining Royal Assent has triggered the launch of route-wide schemes targeted at assisting communities.
- Two funds, worth a combined £5 million, will soon be open for applications:
  - the Community and Environment Fund (CEF) will help enhance community facilities, improve access to the countryside and conserve the natural environment; and
  - the Business and Local Economy Fund (BLEF) will support local economies in areas where businesses may experience disruption from the construction of HS2.
- For more information visit [www.wooreparishcouncil.org](http://www.wooreparishcouncil.org)
  - HS2 / Community & Business tab



Thank you for listening

Please return your forms!



## Questions & Answers