

## Our Community— Forward Together

Autumn  
Edition 2012

### Building on Jubilee Success



Despite the rainy weather the Jubilee events in both Cliffe and Cliffe Woods were still a great success. In Cliffe Woods this was the first community event in many years and has inspired the Community Association to organise other events throughout the year and an Annual Summer Fair. (see page 2 for details).

In Cliffe the early Jubilee event meant there was no Cliffe Fayre this year, but an extra event is planned for Saturday 27th October at the Buttway and Church—see inside for more details.

The success of these events are also down to the support of local villagers like yourselves. It is this that makes it

worthwhile—can you help with future events?



### Estuary Airport Update

In the last edition of the Clarion we reported on the renewed interest in an airport in the Thames Estuary to replace Heathrow as a major hub airport. There has been publicity for an island in the Thames (Boris Island) and also at Grain (Foster's Folly), but less for a proposal that sites the airport between Cliffe and High Halstow.

We were promised consultation (again) in the spring, but this was delayed until after the London Mayoral Elections in May. They were then planned for the summer but postponed to avoid the Olympics. Although many people expected they would finally get underway in the Autumn there has been a further delay so that the conclusions are not published until after the 2015 General (and Local) Elections., so we will be watching out for 'calls for evidence' and 'scoping' reports which often start the process.

There is a real concern that the consultation will be unbalanced with big money commercial interests overpowering any discussion about the real concerns that this development would bring to the area that come from local groups, mainly unsponsored volunteers. But meantime the debate goes on and every opportunity is taken to explain the issues.

**BBC Radio Kent come to the Cliffe Memorial Hall to discuss the airport on Tuesday 30th October from 7pm,**

**This is a ticket only event, tickets are free and available from them on 01892 675607 (although it is likely that there will none left by the time you read this Clarion—still come along and meet outside to let them hear you—entertainment has been arranged. At present we expect Boris Johnson's Aviation Spokesman to attend (there was a quote that this was the monkey not the organ grinder- again).**

Follow the concerns on Twitter #NoEstuaryAirport . The Parish Chair has also published a summary of the pros and cons on a blog at [www.railandcountry.wordpress.com](http://www.railandcountry.wordpress.com) and will look to expand this in coming months.

**An airport development is so much more than just runways!**

## Cliffe and Cliffe Woods

### Jubilee Success Prompts More Events

#### CLIFFE WOODS

Cliffe Woods Community Association will be holding a Barn Dance in the Community Centre on Saturday 17 November at 7.30 pm. The bar will be open and dancing will be to local musicians, the Ian Petrie Band. With tickets priced at £7.50 this promises to be a lively and enjoyable evening.

Other events already planned for 2013 include a Quiz Night to be held in February and a Summer Fair in June.

Regular Boot Fairs take place on the first Sunday of each month from October to March. Tables are very reasonably priced at £6 and doors open for buyers at 9.30 am. Come along, you never know what you may find!

All proceeds from these events will go towards raising funds for an extension to the hall and to provide desperately needed storage facilities.

**For further information on any of the above events, to inquire about hiring the hall or the ask how you can help the Community Association, please contact Ian Downes at cliffewoodshall@hotmail.co.uk or 01474 824367**

Cliffe Woods Community Association Present

**The Cliffe Woods Village Barn Dance**  
with the Ian Petrie Big Band

Saturday 17th November  
In the Community Centre, Parkside, Cliffe Woods  
7:30 to 11:30 pm

Tickets \$7.50 each from Ian Downes 01474 824367  
Bar provided by Cliffe Woods Social Club

#### CLIFFE

Cliffe Memorial Hall continues with its refurbishment programme, having had a new heating system installed, new windows on the lower floor new kitchen facilities in the small hall and lots of decorating, they are now looking to install new windows at the top of the building.

Bookings are increasing with lots of enquiries from local people, which the hall committee would like to encourage, call on 07510676638 for more details..

There are 2 halls, the small hall that can seat approx. 70 people and the large hall that can seat 200.

The hall also has contacts for additional services such as bar hire or wedding planners, caterers and lots more.

A web site is currently being created.

There are lots of regular hirers, guides, dance, different types of fitness classes for all ages, several pre school groups, call on 07510676638 for more details.

The yearly Church Christmas Fayre takes place on Saturday 1 December, there's always lots on offer.

Saturday 1 December also has a fund raising evening for Cancer Research Tamla Motown tribute tickets £15 including supper

There will be a Christmas evening on Saturday 8 December with The Peninsula Big Band providing the music, tickets £10 mince pies sausage rolls and other nibbles included **call 01634 255299 for tickets and more details.** In the new year, a Quiz night, Curry night Summer Dance and lots more.

**Cliffe Memorial Hall is also looking for a booking secretary, they do pay a small salary monthly, ideally the person who takes this role on would live in Cliffe Village and would be community minded, full support from the committee would be given, if you would be interested or would like to help the Memorial Hall Committee in any way, contact the Hall Treasurer, Mary Hooper on 01634 255299.**

### Getting Ready for Winter

Are you someone who usually receives a reminder to make an appointment for a Flu Jab? If so, it's come to our attention that this year you won't be receiving such a reminder. So it's up to you to ring your surgery to make an appointment...don't wait! - The jabs are already available.

We have provided salt for the Cliffe Woods Car Park and shops to use when icy, but like most of public areas it often not possible to clear these properly. Take extra care and decide if you feel safe going out. If you can get out, think about your neighbours as well and offer to help them.

### Youth Club Progress

Both the Youth Clubs are beginning to operate successfully. We can now offer our young members Table Tennis, Pool and XBOX games at both venues. We also provide the facility for members to play their own music and there is a tuck-shop. We are short of girl members, so come on girls come and see what you are

missing. We can offer nail manicure and cooking lessons (Cliffe). Parents encourage your teenagers to come and take part and if you are able come and help out. Cliffe Woods meet on the first Monday of the month and Cliffe the third Monday.

# Community News

## Cliffe-at-Hoo Historical Society

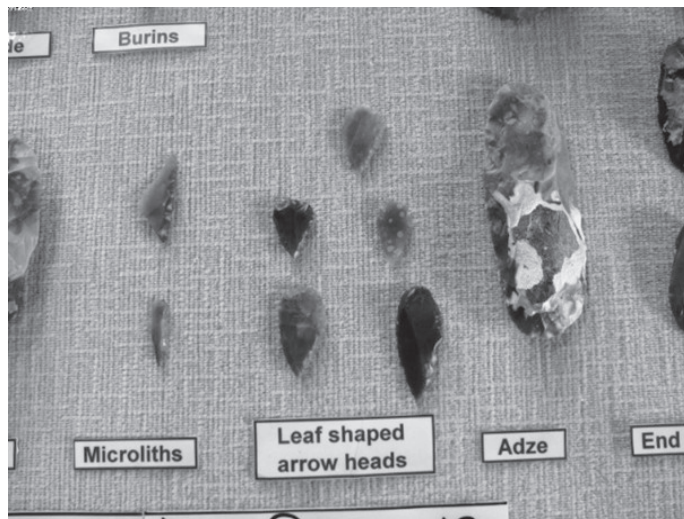
Over the summer months members of the Historical Society have been engrossed in the understanding of the area through its archaeology and has forged links with the Kent Archaeological Society, Wessex Archaeology (renowned for their work with Time Team), KCC's Archaeological team, R.S.P.B as well as working closely with archaeologists and museum staff in Kent.

One of the society's methods of understanding the archaeological and historical landscape of Cliffe and its surrounding area is through fieldwork. Fieldwork covers a number of aspects of tried and tested surveys of the land. The society makes use of aerial photography and satellite imagery to locate and record patterns seen from the air which could easily pass unnoticed from the ground, to support known sites and to cover a greater degree of the land, especially where it is difficult to gain access.

Another aspect of locating sites of interest is through documentary research. The study by the society of early maps and charters can reveal a great deal of information particularly those from the Saxon and early medieval periods. This, in conjunction with identifying the known sites that has already been recorded on HER, NMR and PAS, can aid in the pin-

pointing accordingly.

If you are ever out and make a find of interest please let us know – by all means records where you have found it and photograph it but **do not dig**. Firstly digging an object and removing it could destroy the evidence surrounding it (removing the context) and secondly, as it is on someone's land, you may need to have permission to do so.



### Searching the Archives

Due to the peculiarities of the history of Cliffe the records for its past have been spread across many areas. To study the documents, although very informative, is a very time-consuming affair especially when parts of the story may be located in various depositories.

We have members visiting the local archive centres at both Maidstone and Medway on a regular basis and interest in archival centres at Canterbury Cathedral and Lambeth Palace where the volume of information can be gained.

Some of the archival material that is of interest can also be found stored on-line – this is especially true of some of the early medieval charters, which are also translated so save us a great deal of extra work, and the more recent records of the inhabitants of Cliffe through census returns, Parish records, electoral rolls, trade directories, phone directories etc.

The Historical Society covers the whole of the ancient parish of Cliffe as well as the neighbouring villages on the Hoo Peninsula and, with over 200 members, is the largest historical society on the peninsula.

If you are interested in the history of our area or would like to find out more then please do get in touch. Our email address is: [info@cliffehistory.co.uk](mailto:info@cliffehistory.co.uk) or 'phone 01634 220853 or 01634 221173. You can also visit our website for more information at [www.cliffehistory.co.uk](http://www.cliffehistory.co.uk)



pointing of areas of specific interest.

*Aerial crop marks identifying a range of long lost buildings.*

Field walking is a well-established technique that we employ when an area of specific interest is highlighted: again, this is a non-intrusive method of surveying the land. The practice of field walking is one that we particularly enjoy (maybe because it is normally a group outing or a chance to get out in the fresh air!) and can be accomplished easily by all. It involves walking over the ground and identifying and recording finds in a systematic manner - **permission to walk the land is always sought beforehand**. On larger areas the 'field' may be divided into more manageable sections and the findings are plotted



## Cliffe & Cliffe Woods Parish Council

www.cliffeandcliffewoods-pc.gov.uk

17 Graveney Close  
Cliffe Woods, Rochester  
Kent, ME3 8LB  
**Clerks**

Mrs Alex Jack (PO)  
Mrs Laura Farrelly (RFO)

**Phone:**  
**01634 566166**

**Email :**  
**clerk@cliffeandcliffewoods-**  
**pc.gov.uk**

**Chair Chris Fribbins**  
5 Englefield Crescent  
Cliffe Woods, Rochester, Kent,  
ME3 8HB

**Email:**  
chair@cliffeandcliffewoods-pc.gov.uk

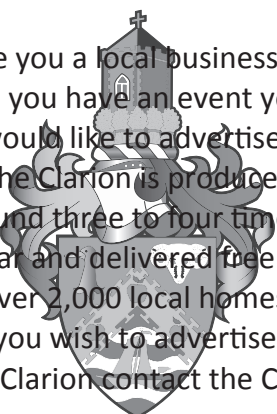
**Vice-Chair Ken Kentell**  
52 Englefield Crescent  
Cliffe Woods, Rochester, Kent  
ME3 8HD

**Email:**  
vicechair@cliffeandcliffewoods-  
pc.gov.uk

Are you a local business or  
do you have an event you  
would like to advertise?

The Clarion is produced  
around three to four times a  
year and delivered free to  
over 2,000 local homes.

If you wish to advertise in  
the Clarion contact the Clerk



## Cliffe & Cliffe Woods Parish Councillors

### Cliffe Village Ward

James Wenban	222620
Lynne Bush	222103
Jim Corrigan	220373
Gill Moore	222205
Colin Elliott	220877
Dave Green	221173
Joan Darwell	220121
Vivienne Walton	221710

### Cliffe Woods Ward

Margaret Emblin	220904
Chris Fribbins	566256
Ken Kentell	221434
Robert Hunt	222042
Alan Taylor	220689
Sue McDermid	220864
Ray Letheren	222224
Ian Petrie	221862

## Growing Your Own—Cliffe Allotments

There is something uniquely splendid about growing your own vegetables: whether it is the knowledge that the produce is fresh and untainted by chemicals, the fresh air and exercise in working the land (far more beneficial and cheaper than belonging to a gym), knowing that you rarely have to pay extortionate prices for less-than-average vegetables at the supermarket or just the superb and wonderful flavour you achieve by growing your own.

If your garden isn't large enough for your needs have you considered taking on an allotment?



Although there is a waiting list for an allotment to become available, since last May there has been thirteen new plots taken over out of the seventy-three plots in existence at the allotment grounds in Cliffe.

Even although this season has not seen the best weather for the growing of vegetables there have still been bumper crops raised by those who have been working their allotment plots. The allotment holders are a friendly and helpful group who are always willing to share their experience with newcomers, give a helping hand and make all feel very welcome.

If you would like to have your name added to the short waiting list for an allotment please give the Parish Clerk, Alex Jack, a call on: 01634 566166.

## Who we are and what we do

The Cliffe and Cliffe Woods Parish Council has existed for over 100 years. We are a nationally recognised, and most local level, of local government. There are 16 councillors, (8 for Cliffe Woods and 8 for Cliffe). The council meets monthly, alternately, in Cliffe and Cliffe Woods. There are a small number of committees that also meet to discuss specific issues in more detail before making recommendations to the Parish Council. The Clerks manage the parish on a day to day basis and the Caretaker looks after the recreation ground and play area in Cliffe and helps keep the Buttway and Cliffe Woods Car Park clean and tidy and helps with general maintenance.

The Parish is funded through the local council tax. Residents pay an extra amount on top of Medway Council, police and fire services—**this will raise £43,252 in 2012/2013**, and is, for band D, 45p per household per week! We also raise funds from other sources for large schemes such as the Cliffe Ball Court, Cliffe Play Area, BMX/Skatepark and the allotments and receive a Rural Liaison Grant from Medway Council to spend on other improvements.

We are consulted on planning applications in our parish and local, regional or national issues affecting our area. We also take an active part in liaising with Medway Council, the police and the longer term strategic plans for our area.

We also help fund Youth Clubs in both Cliffe and Cliffe Woods—and work is underway to get them restarted. Funds are also available to support neighbourhood watch schemes, the grass cutting in the churchyard of St. Helen's Church, Cliffe (£1,000 a year) and to support our two village halls (£5,000 a year, each).

All members have to stand for election every four years, if there are more nominations than positions, polling takes place on the same day as the Medway Council elections. (May 2015 is the next date). In between elections any vacancies can be filled by a by-election if sufficient local electors request it, but more commonly additional members are co-opted. **Why not take an active part in the community and join us?**



(Medway) Charity

Registration Number 09599

**Friends of Chernobyl's Children**  
A Registered Charity



**Would you be interested in hosting a child for four weeks during June and July 2013 from Belarus.**

The children would be aged between 7-8 years old.

**At present we have children waiting for host families.**

The trip will provide them with rest and a chance to breathe clean air and eat food that is not contaminated.

The children attend a programme of activities during the four weeks, with the weekends free for play and fun.

**Do you have space in your family to help another family in need. If you would like further information about being a host family or a helper during the four weeks then please contact Dian Fitter on 01634 222875**  
[dianefitter@btinternet.com](mailto:dianefitter@btinternet.com)

**FOCC (Medway) will undertake CRB checks as it is committed to safeguarding children**

## **Buckland Lake Reserve, Fishery & Dive Centre**

*something for all the family to enjoy*

\* SSSI nature reserve- 1.5 mile circular walk, bird hides & something new to see every season.

Dogs on leads welcome. Open 7 days a week.

\* Fishery - 2 mixed coarse lakes & a large trout lake

Tuition for individuals & groups, rod hire, bait, boat hire, group booking & gift vouchers available.

Wheelchair accessible fishing platforms, parking & toilets. Open 7 days a week all year round.

\* 5 star PADI Dive Centre which is the deepest inland dive facility in the S/E. Tuition for individuals & groups, kit hire & sales. Gift vouchers available.

\* A brand new cafeteria due to open spring 2013

Reserve – 07816437946 / 01959 523523

[bucklandlake@hotmail.com](mailto:bucklandlake@hotmail.com)

Fishery – 07827337424 / 01634 220005

[bucklandlake@btconnect.com](mailto:bucklandlake@btconnect.com)

Dive Centre – 07961077241

[info@bucklanddivecentre.co.uk](mailto:info@bucklanddivecentre.co.uk)

Buckland Road, Cliffe, Rochester, Kent, ME3 7RT



## **St Helen's Church, Cliffe CHRISTMAS TREE FESTIVAL**

The St Helen's Church Christmas Tree Festival is being planned to start on the 1st December. There were over 60 trees last year and we want this year to be even bigger!

If you are a member of any organization or business in Cliffe, Cooling or Cliffe Woods and would like to be involved then please contact Di Fitter on 01634 222875 or email [dianefitter@btinternet.com](mailto:dianefitter@btinternet.com) for further details.

This is a wonderful opportunity for your organization or business to spread the word about what you do or advertise your business. The Church will be open for people to come and see the trees during the whole of December. There will be further details soon about opening times for the festival.

**WINTER SALE!**

**Block Paving**

Supply and Install

From £30 per M<sup>2</sup>

**Decking**

Supply and Install

From £40 per M<sup>2</sup>



**Specialist Contractor**

- Garden Design
- Groundworks
- Block Paving
- Decking
- Patios, Driveways and Paving
- Planting and Horticulture
- Ponds
- Lawns
- Garden Structures
- Tree Removal, Pruning and Stump Grinding

Tel: 07815 438 993

Email: [office@thekmn.co.uk](mailto:office@thekmn.co.uk)

[www.thekmn.co.uk](http://www.thekmn.co.uk)

# ORCHARD

## Bed & Breakfast

Friends or family visiting area?

Business colleagues or guests need accommodation ?

Ideal pre wedding venue for brides & bridesmaids or grooms and ushers

Facilities available for bridal preparation including photographic opportunity

Orchard B&B is a completely self contained facility with five modern en suite bedrooms, TV with freeview & DAB radio, Wi Fi

Ground floor en suite bedroom available

Guaranteed free off road parking within a gated driveway

Extremely comfortable beds with fine linen

Four Star Silver Award Grading by Quality in Tourism

Breakfast Award by Quality in Tourism

**01634 222780**

[www.orchardcottagekent.co.uk](http://www.orchardcottagekent.co.uk)

Email : [enquiries@orchardcottagekent.co.uk](mailto:enquiries@orchardcottagekent.co.uk)

11 View Road, Cliffe Woods, Rochester, Kent, ME3 8JQ

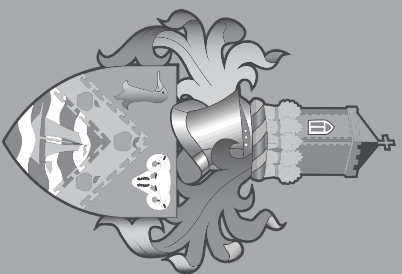
## VILLAGE PLASTERER

### CLEAN TIDY SERVICE

**FREE ADVICE AND QUOTATIONS  
MOULD AND DAMP SOLUTIONS**

**CALL AARON ON**

**07834 767 292**



Are you a local business or do you have an event you would like to organise?

The Clarions is produced around three to four times a year and is delivered to over 2,000 homes and is available

online at  
[www.cliffeandcliffewoods-pc.gov.uk](http://www.cliffeandcliffewoods-pc.gov.uk).

If you wish to advertise in the Clarion contact the Clerk by phone or email

01634 566166

[clerk@cliffeandcliffewoods-pc.gov.uk](mailto:clerk@cliffeandcliffewoods-pc.gov.uk)



## Cliffe Autumn Fayre

*'Spirit of the Forties'*

St Helens Church & Buttway

**Saturday 27<sup>th</sup> October 11am till 4.00pm**

- Children's Rides - Craft Stalls – Cake & Produce Stalls etc - Coconut Shy
- Bric-a-Brac – Plate Smash - Rifle Range –Spinners & Weavers
- See a Fine collection of Flint Tools
- St Helens 'Lyons' Tea Room with waitresses in 'Nippy' Uniform Tea & Homemade Cakes - 'Live' 40's Music with Rochester Swing Duo
- WWII displays, with stories from local people & community spirit bought about in such difficult times. Please come share your stories
- Vintage Army Vehicle Display & Home Guard Re-Enactment
- *Enjoy a walk with local enthusiasts in uniform at 11am to a WWII Pillbox plus Home Guard Re-enactment*
- **NO ESTUARY AIRPORT INFORMATION STAND**  
Free posters & Car Stickers
- 'Artists Against the Airport' artwork display
- *Stalls inside & out – fun for all the family whatever the weather!*

Proceeds to SHINE

Organised by Friends of the North Kent Marshes as part of Kent Coastal Week

[www.northkentmarshes.com](http://www.northkentmarshes.com)

