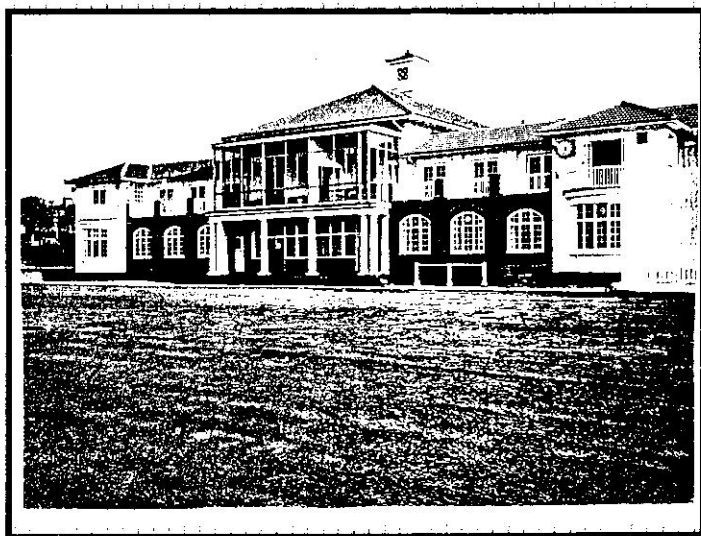


National Westminster Bank Sports & Recreation Club

Norbury Farewell Party
(1900 - 1998)

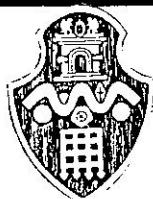


Saturday 25th April 1998

At the Pavilion

Turle Road, Norbury

Buffet - Fireworks - Disco - Bonhomie



A Brief History

In the beginning

In 1898 a group of men in the London & Westminster headed by A Podmore, JJ Brown and JI Challis made the proposal for the purchase of a ground and organisation of a regular club. A suitable piece of ground was found at Norbury, enough support promised from subscriptions and donations to cover running expenses and the Bank promised a loan for the purchase and development of the ground. To find money for the interest on the loan and its gradual repayment, enthusiastic members started an insurance agency which grew rapidly and a year after the loan was taken and the ground purchased. It was agreed that the first charge on the monies was for ground lay out, any pavilion to be built from whatever was left over. The ground, the first Bank ground, was opened on 5th May 1900 with a cricket match against a side brought by Major Philip Trevor. One of the directors Mr O. Benecke took great interest in the club and was present at the opening match. The Ground and pavilion provided for Cricket, Rugby, Football, Lawn Tennis, Bowls, Quoits, Skittles and Boxing.

Two Grounds - 'One' Club

In 1905 the London and County Bank acquired a sports ground at Highbury Ave, Norbury, a mile from the London and Westminster ground. Parrs Bank acquired a ground in 1914 near East Dulwich station.

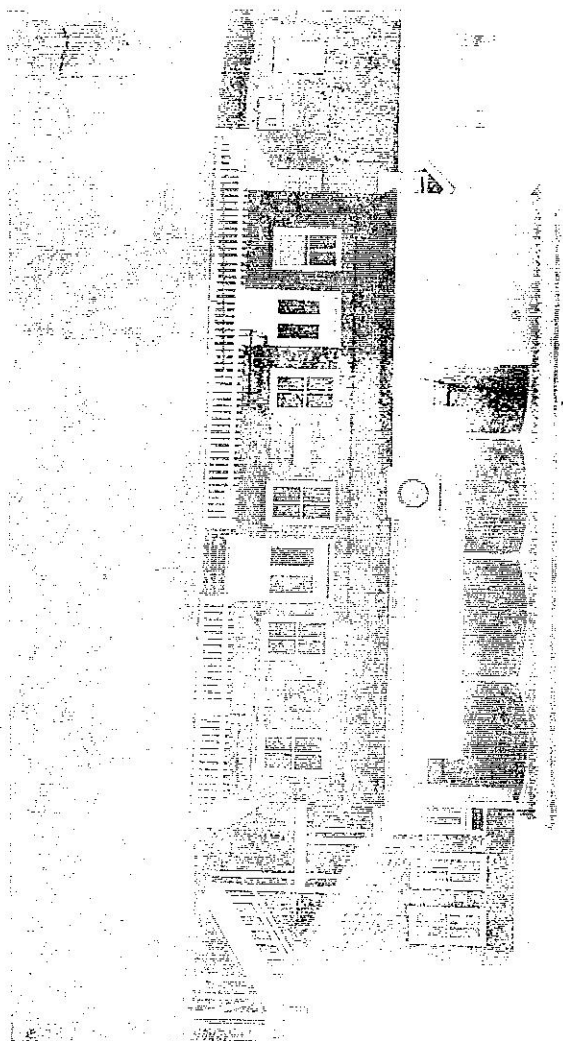
When the London & Westminster and London & County Banks amalgamated in 1909 it was soon decided to run the two clubs as one. The loan on the London & Westminster ground was cancelled and the profits on the insurance agency became available for general expenses. Separate cricket sides continued to play at each ground, though a joint tour was organised. Rugby Union Football remained entirely at the London & Westminster ground. Association Football and Hockey at the London & County ground. Lawn tennis was played at both. A ground secretary was appointed for each ground.

War stopped play

This arrangement continued until the war in 1914 when all activities ceased but most members continued their subscriptions during their absence.

Play resumed

In 1919 there was a tremendous enthusiasm for sport following the War break. The London County & Westminster Bank had amalgamated with Parrs Bank in 1917 and returned service men from both Banks were clamouring for playing facilities which could not be provided in full on the existing grounds. The directors offered to find money for extensions and as Parrs ground was still allotments and land adjoining the London & Westminster ground was available it was decided to sell the former and extend the original ground. There was a suggestion of selling the London & County ground and concentrating all activities of the club but sentiment was too strong and a great chance was lost. However 10 acres of farmland to the North of the existing ground was bought and developed and another five acres to the west of the



Norbury Pavilion - 1900

Opening of SPORTS CLUB & GROUND

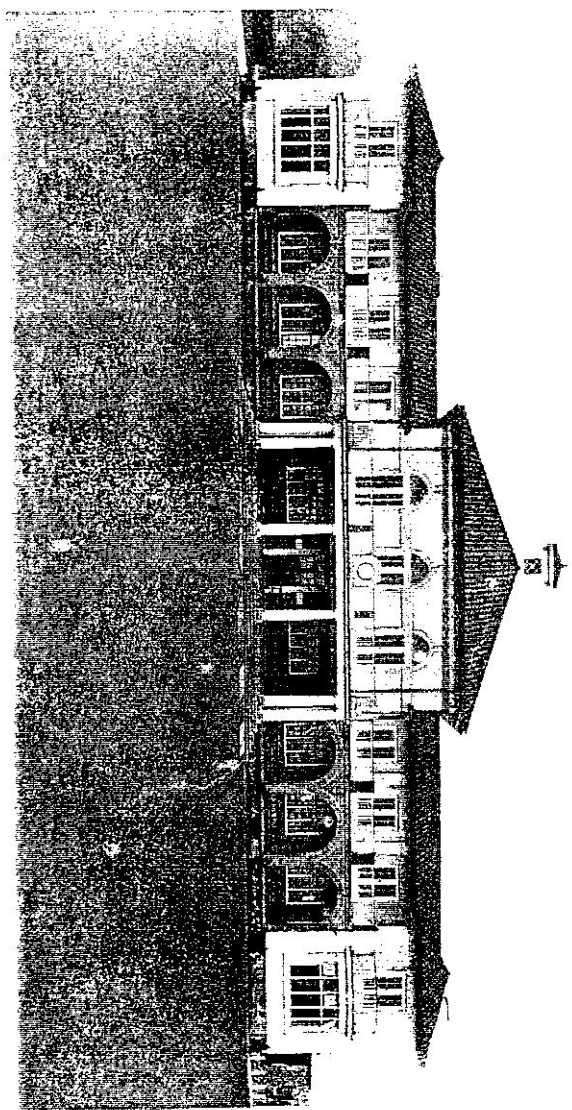
5TH MAY 1900



W. VALSTANTON		J. J. CHALUS	
J. T. HEARNE	E. A. WILLEDON	H. C. PRICHARD	J. J. BROWN
W. W. RUSSELL	W. W. JAMES	J. H. STODDON	K. E. M. BAKER
D. BRENNER	C. V. WEICALL	L. PITT BROOK	R. THOMS
A. G. GUGH	A. HEARNE	C. C. SIMPSON	C. J. BOWMAN
H. OMANFIELD	A. PODMORE	C. A. SNELL	B. OTO
C. J. DOUGLAS	C. T. LAWLESS	F. BUTLER	C. W. TREVOR
A. TREVOR	O. A. SEVECKE	A. STEWART	

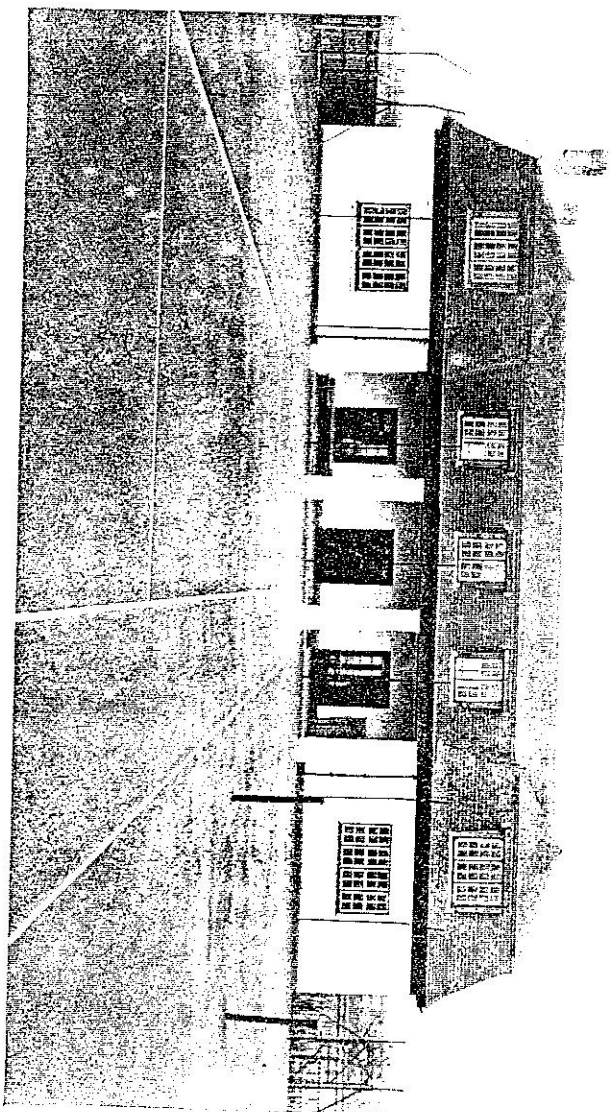
London and Westminster Bank

Cheque & Co. W. D. Dyer's XI.



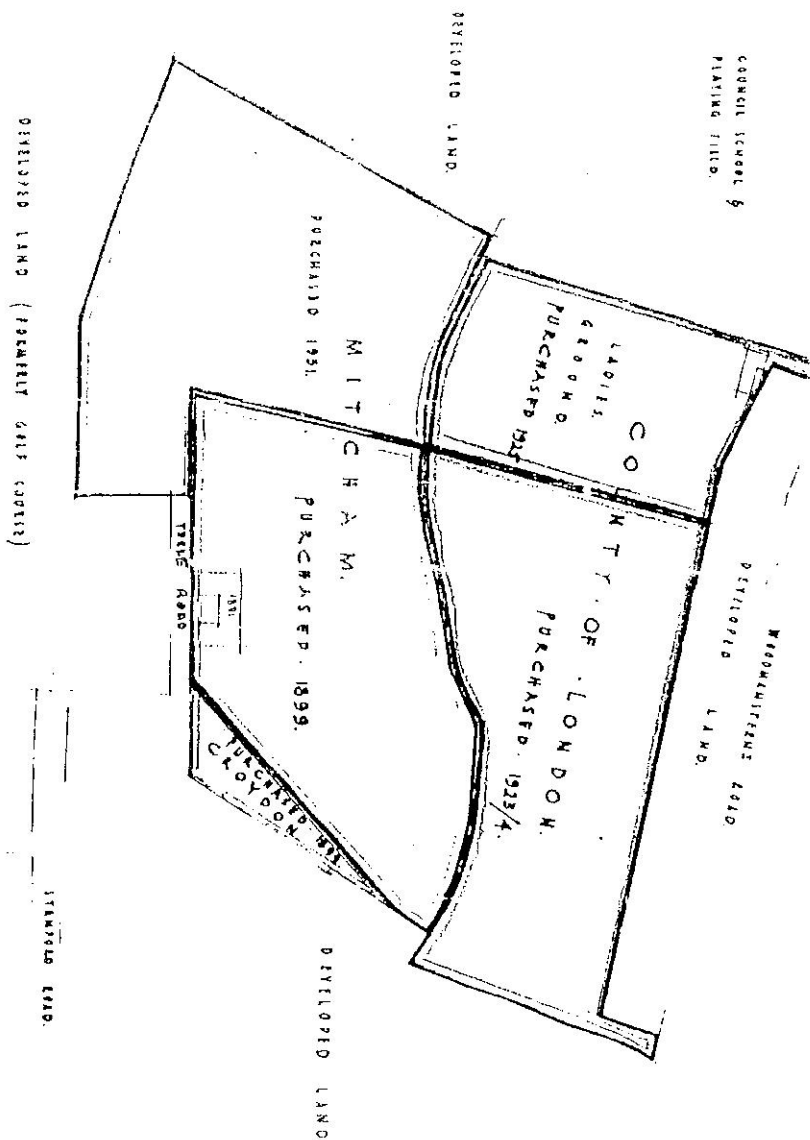
New Norbury Pavilion - 1926

OTO BY E. DOCKREE,

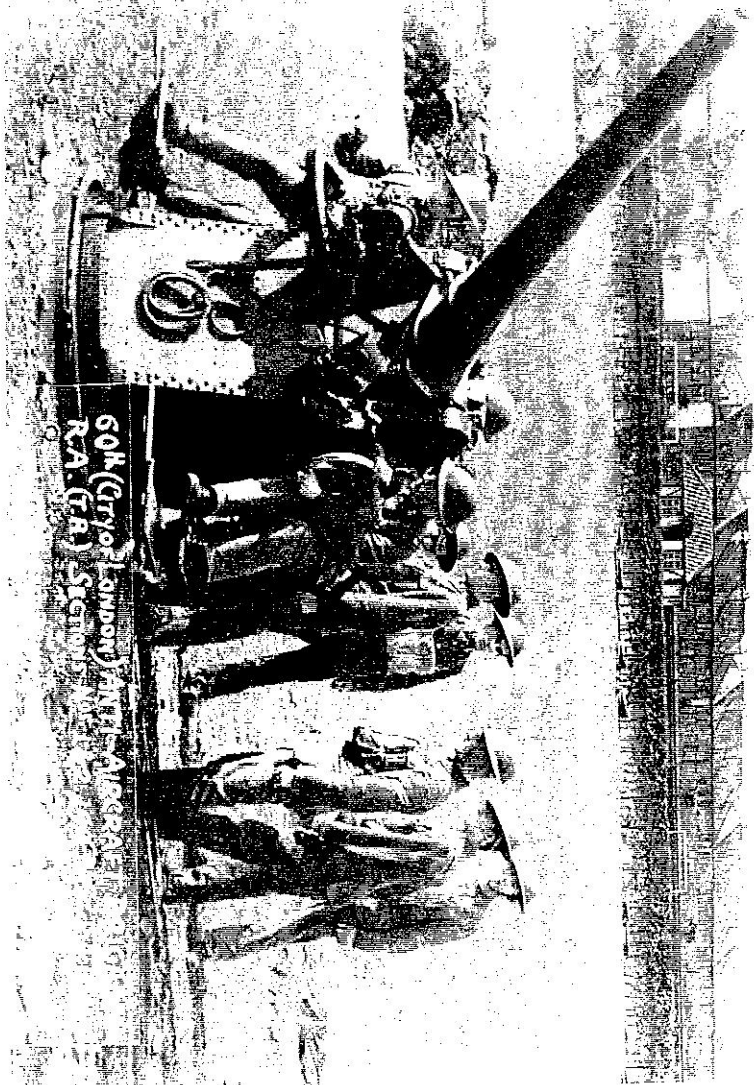


Ladies Pavilion - 1926

PHOTO BY E. HODGKINS



Norbury's Expansion 1900 -



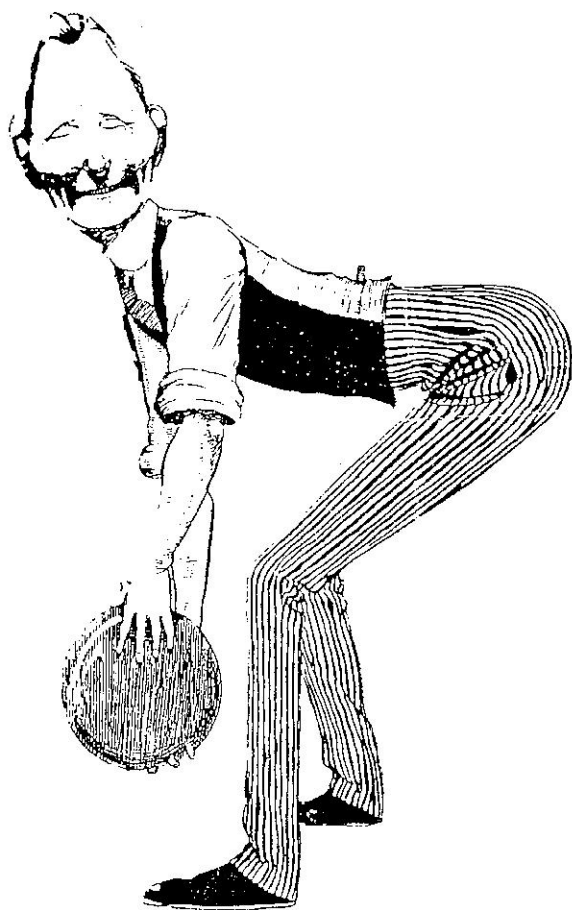
60th (City of London) Anti-Aircraft
R.A. (A) Squadron

Military Matters



The Norbury Pavilion today
incorporating The Ladies Pavilion

THE COUNTY AND WESTMINSTER MAGAZINE
VOL. VIII JULY 1, 1914 NO. 3.



SKITTLES.

extension were bought and laid out as a ground for the now large number of women staff. In 1926 the old pavilion was dismantled and a new one built, also a small pavilion on the women's ground.

One Ground

By the middle 1920's the division of the clubs activities between two grounds was causing increasing inconvenience in working and to visitors and much extra expense. In 1923 the Norbury Golf Club adjoining the old London & Westminster ground closed down and its land was for sale. This offered the last chance of concentrating the club and in spite of much opposition from loyal old 'County' members the long view was taken and it was agreed to try to get the whole club together. The directors were approached and agreed to purchase the new ground and finance the conversion on the understanding that the total cost did not exceed what might be expected to be realised by the sale of the London & County ground. A wet winter impeded the work and caused much discomfort whilst the necessary alterations were being made to the pavilion.

Military Occupation

The 1939-45 War saw the ground used as an anti-aircraft battery. However the Club was able to continue its activities on a reduced scale using the women's pavilion and that part of the Ground not used for military purposes.

Post War

After the War the requisitioned Ground needed complete reconstruction and the pitches were not completely ready for play until 1951. 1957 saw the new Ladies pavilion built on to the main pavilion. However the major post War development that took place was in 1970 when the Westminster, National Provincial and District Banks merged. Three sports grounds emerged from this union viz. the NP ground at Copers Cope Road Beckenham, Coult's (part of NP) interest in Private Banks ground at Catford and, of course, Norbury. Norbury remained the largest covering some 32 acres.

Not just Bank sport

Norbury, whilst being the home for Bank sport for some 98 years, has also provided facilities for local clubs/organisations among which are the Croydon Schools, and the London Schools both of which have held their cricket championship finals at the Ground for countless years. Crystal Palace Football Club have been regular visitors and have played many of their youth sides home games on Norbury turf and indeed the 'Eagles' 1st team has on occasions trained there too.

A place in history

There is no doubt that Norbury will always be fondly remembered by sports men and women and will be assured of a place in the history of the Bank's sporting life: a life very much conceived at Norbury a century ago!



THE CLUB was established in 1898 to purchase and maintain a Sports Ground for the use of Members of the various Athletic Clubs of the Bank.

The Committee congratulate the Members on the success of the first summer season. Since the opening on May 5th 2,500 railway tickets have been sold, though this in no way represents the total attendance.

There are 212 Full Members of the Club and 176 Honorary Subscribers.

The Income exceeds £800 per annum; of this sum £400, derived from the Insurance Fund, is pledged for the service of the Loan, and £400 from Subscriptions, &c., for the maintenance of the Ground.

The Ground and Pavilion now being in thorough working order, the Committee, while retaining the control of the Ground, will, at the same time, continue to act as Hon. Treasurers of the various Clubs, leaving otherwise the management to the several Committees.