



"We are very pleased to be working with Ares Landscape Design on our village centre regeneration project. We have been very impressed by their professional experience and flexible approach. These attributes, together with their enthusiasm, willingness to listen and attention to detail have proved ideal for creating the design required to move this complex project forward."

Hathersage Parish Council
Chris Winfield, Heart for Hathersage

Sheffield Office

Gatecrasher
51 Eyre Lane
Sheffield
S1 4RB

t: 0114 276 2000

e: sheffield@ares.eu.com

London Office

Unit G09, The Pill Box
115 Coventry Road
London
E2 6GG

t: 0207 254 3332

e: london@ares.eu.com

Cheltenham Office

Harley House
29 Cambray Place
Cheltenham
GL50 1JN

t: 01242 399 210

e: cheltenham@ares.eu.com

CONTENTS

1.0	Introduction	03
2.0	Practice background	04
3.0	Design Philosophy	06
4.0	Relevant experience	07
5.0	Programme and Resource	10
6.0	Deliverables	14

1.0 INTRODUCTION

Farnsfield Acres

In response to an invitation by Inspire Design & Development, we are very pleased to provide a fee proposal for the provision of landscape consultancy services for the feasibility study for the improvements at Farnsfield Acres.

In this document we have set out the background of our practice and our team, the experience we have built both collectively and individually since our establishment.

Our practice has delivered a number of public realm and community involvement projects throughout the country and abroad.

We've set out the brief as we understand it and put forward a scope of work and fee proposal broken down by RIBA work stages.

Some examples of directly relevant commissions that we have completed or are currently working on are included. Of particular relevance to this commission is Heart for Hathersage Community Scheme.

As a practice we are enthused about the opportunity to be involved with this project. We hope the information contained in this document gives you the confidence to choose us to take the scheme forward.



Associate

September 2020



Modular Temporary Landscape at Marshalls Mill in Leeds - **Winner of 2013 Leeds City Architectural Award for Landscape**

2.0 PRACTICE BACKGROUND



Our Approach and Design Philosophy

Since the inception of our Design Practice, we have been driven by a single attitude towards the design of landscapes and public spaces: we strive to create places which are sustainable, practical and beautiful.

We have created an open studio where the free flow of ideas is not stifled by hierarchy and all members of our team can focus on producing exciting and bold landscapes.

In order to achieve this, we treat every place we make as a unique opportunity to improve the experience of all who use it.

We delve deep to understand the unique combination of factors which have created the current circumstances, and armed with this knowledge formulate a tailored design response which not only meets our client's aspirations, but enhances our environment.

Who we are

Established in early 2011 by Ricardo and Ania Ares, Ares Landscape Architects are an award-winning design practice which offer landscape consultancy services which are personal and professional.

We are passionate about delivering design solutions which are imaginative, sustainable and robust - but principally meet our client's needs.

From our offices in London, Sheffield and Cheltenham we provide a comprehensive range of consultancy services relating to Landscape Architecture and Planning throughout the United Kingdom and overseas.

Drawing on the collective knowledge and experience of our staff, gained through years of private practice, we balance inspiration and critical thinking to deliver the right design for clients and end users. We strive to deliver solutions which respond to our client's needs, and develop information at all stages of the design process.

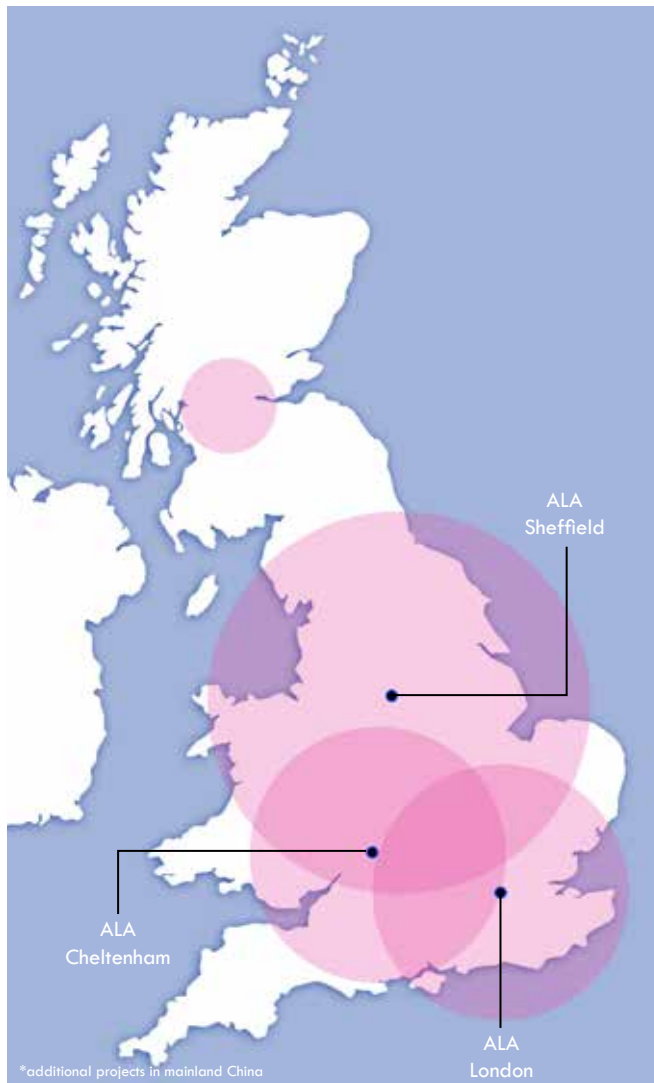
We offer the full range of services expected from a Chartered Landscape Consultancy Practice, and additionally can provide ecological consultancy as part of our commissions through our strategic partners.

In addition, we have particular skills in organising, managing and promoting community consultation and participation.

Unless otherwise stated, all plans, drawings and sketches shown in this document have been produced by members of the practice.



2.0 PRACTICE BACKGROUND



Our UK project distribution since Feb 2011*

With a large portfolio of completed projects since our establishment in February 2011, we can boast of a broad range of work throughout the UK and abroad. As a practice we are focussed above all on delivery - we estimate over 95% of the work we are commissioned to undertake results in the project being taken through to successful implementation on site.

The common threads that run through these are the strong working relationships we develop with Clients and Consultants in the course of delivering these schemes. So much so that the majority of our work comes from either repeat clients or referrals.

With extensive experience of complex landscape and public realm projects, we are passionate about delivering design solutions which are imaginative, sustainable and robust. Additionally, although a young practice, the more senior members of the practice have been involved in the profession for 20 years or more. In that time they have gained knowledge and experience of their discipline, and have been responsible for delivering schemes across all development sectors, for private and public sector clients, and of varying degrees of scale and complexity. In particular, we have nurtured a number of larger, complex masterplan projects over time, remaining closely involved from inception to multi-phase delivery.

The following pages set out in greater detail some of the project experience of the proposed team.



3.0 DESIGN PHILOSOPHY

Although the design process seldomly follows a perfectly linear path, there is a clear overall direction to the exercise, which begins at a point of prevailing uncertainty and moves towards a desired solution in a series of ever reducing, iterative steps.

In order to ensure the smoothest path and the optimum outcome, we underpin our approach on three fundamental building blocks :

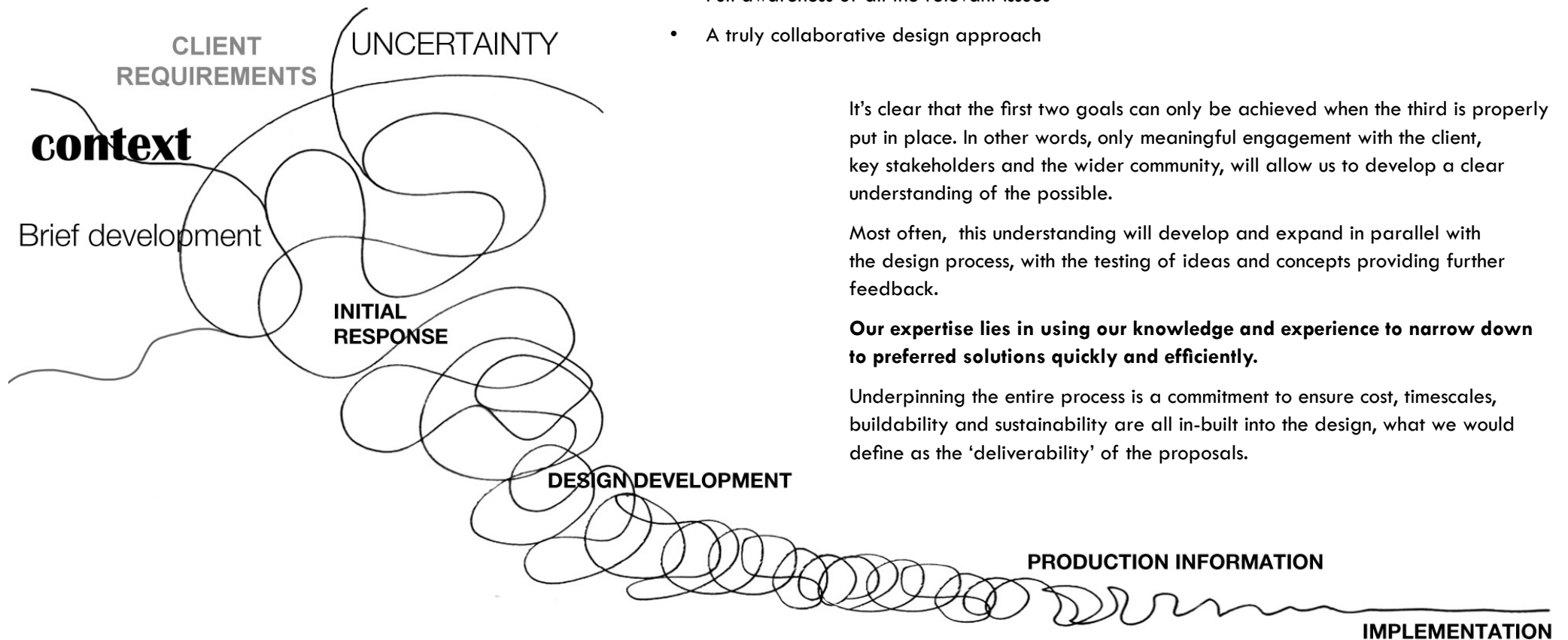
- A proper understanding of the brief
- Full awareness of all the relevant issues
- A truly collaborative design approach

It's clear that the first two goals can only be achieved when the third is properly put in place. In other words, only meaningful engagement with the client, key stakeholders and the wider community, will allow us to develop a clear understanding of the possible.

Most often, this understanding will develop and expand in parallel with the design process, with the testing of ideas and concepts providing further feedback.

Our expertise lies in using our knowledge and experience to narrow down to preferred solutions quickly and efficiently.

Underpinning the entire process is a commitment to ensure cost, timescales, buildability and sustainability are all in-built into the design, what we would define as the 'deliverability' of the proposals.



4.0 RELEVANT EXPERIENCE

HEART FOR HATHERSAGE Peak District National Park



Ares Landscape Architects were appointed in June 2011 to develop public realm proposals for a new public space at the heart of Hathersage, a Derbyshire village in the Peak District National Park.

Working closely with the Village Centre Group, we devised and managed a programme of extensive public engagement, which resulted in a proposal that was submitted for planning, obtained funding, tendered and delivered on site. This was a community led project, driven by the aspiration of the villagers to have a public space within their village

The project involved creating a public space to be the heart of Hathersage village within the built fabric where there was limited space. The design team explored reconfiguring the site using various methods and assessed optimal massing and ways to create a sense of place.

The project won the Peak District National Park Planning Award in 2018 and the East Midlands RIBA Award in 2019.

Client: Hathersage village centre group
Architect: Studio Gedye
Contractor: NT Killingley
Budget: £1 million
Stage: Completed 2017



4.0 RELEVANT EXPERIENCE

WICKERSLEY PARK Wickersley, Rotherham



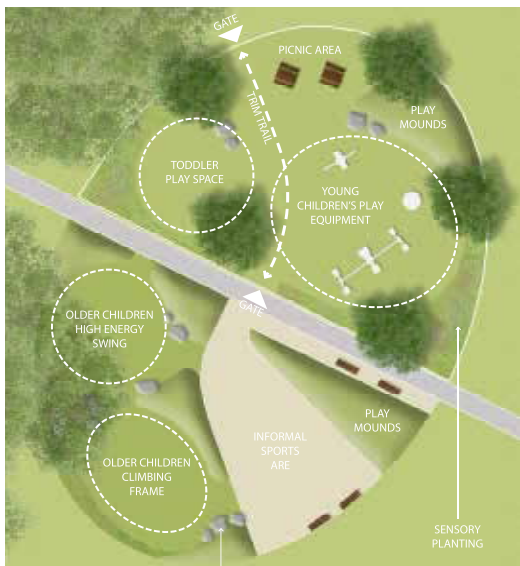
Ares were invited by Wickersley Parish Council to develop a landscape masterplan for Wickersley Park in order to assist them to raise funding for its development.



The proposal was for a series of improvements to the park to add to the Leisure activities for the local community. New facilities proposed in the masterplan include a running loop, dog walking tracks, two play areas, one for toddlers and one for older children, a community orchard, educational habitat areas and exercise equipment.

The proposals were developed after community consultation events held in the park and in close discussion with the Parish Council.

The masterplan has been divided into stages to assist with funding bids and the first phase, the play area at the centre of the park is due to be constructed during 2020.



Client: Wickersley Parish Council
Contractor: Jupiter Play
Budget: £200,000
Stage: Construction starts in 2020



4.0 RELEVANT EXPERIENCE

Fairchild's Garden Hackney, London



Fairchild's Garden is a park in a prime location, positioned centrally within Shoreditch. The project involved regenerating a semi-derelict public space and cemetery into a high quality pocket park and civic space that would improve the external environment of the immediate locale and act as a catalyst for further public realm improvements.

Ares developed a striking proposal that was not only sympathetic to the historic significance of the site but also portrayed the present character of Shoreditch as a vibrant, creative and social area.



The proposals include the installation of a kiosk and the widening of the main entrance, both helping to attract users to populate the space. An open area is positioned centrally which allows flexibility for additional seating or art installations. Secondary footpaths provide multiple routes through the space with occasional seating opportunities providing a range of intimate and public spaces. The overall outcome is a distinctive, high quality public space that subtly incorporates the heritage into the fabric of the design.

Client: London Borough of Hackney
Engineer: Pick Everard
Completion: Autumn 2017
Project Value: £400,000



4.0 RELEVANT EXPERIENCE

Ares Landscape Architects were engaged by **Enfield Council** to facilitate the design, documentation and planning services for the future expansion of the existing Edmonton Cemetery grounds.

At the time, the borough was undergoing numerous pressures associated with the demand and limitations of available space and diversity for burial types across the community.

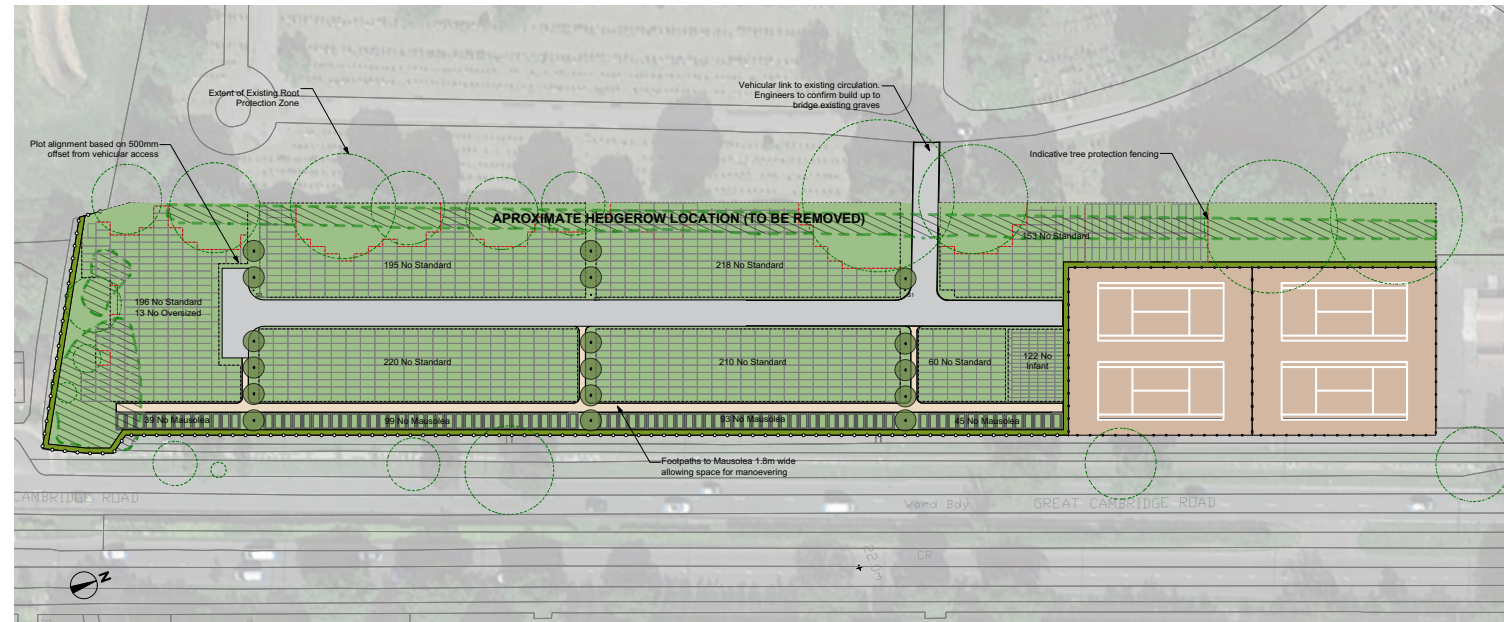
The landscape strategy utilises a number of severely aged tennis courts along Great Cambridge Road to accommodate for the cemetery's expansion. Interestingly, the overall site makes up part of the broader Metropolitan Open Land (MOL) Strategy and, as such, had to adhere to a number of design standards and requirements relating to the use and retention of landscape character as required in accordance with the National Planning Policy Framework.

One of the major impacts resulting from the proposed expansion was how the design would appropriately respond to a reduction or loss in current sporting facilities for the community. Ares, working cooperatively with Enfield Council, was able to generate an adaptive outcome that would not only facilitate for the necessary plot arrangements, but also restore a high quality refurbishment to a number of tennis courts.

Ares was able to successfully secure a permit for the proposed use and development within an efficient well organised time-frame. The design provides a fundamental reactivation to the area, whilst successfully fostering a cohesive balance between the broader MOL parklands and surrounding neighbourhood character.

Edmonton Cemetery London Borough of Enfield

Edmonton Cemetery London Borough of Enfield



Client : Enfield Council

Architect : Ares Landscape Architects

Budget : £3 m total project budget

Completion : Summer 2018

Project Manager : Pick Everard

5.0 PROGRAMME AND RESOURCE



Ricardo Ares
B.Eng PG DipLA CMLI

Director



Louis Ashford
BA(hons) PG Dip MA CMLI

Associate



Chris Fazakerley
BA MLA

**Landscape
Architect**



Laura Silva
BA MA PhD

**Landscape
Architect**

CLIENT

**PROJECT
LEAD**

**DESIGN +
TECHNICAL
REVIEW**

**LANDSCAPE
SUPPORT**

Project Team

One of the characteristics which sets us apart from other Landscape Design Practices is the quality of our staff.

Easy enough to say, but we take recruitment very seriously, and we believe in recruiting the very best. Every member of our team has been selected after a careful review process, often with a direct referral, and must possess the same passion for the profession and strive towards excellence.

The team we have selected for the delivery of this scheme has been chosen for its mix of experience and knowledge of residential developments and projects in Leeds.

Ricardo will be Director in charge with oversight of all aspects of the project and be a principle point of client contact throughout the process.

Louis will act as the project lead and will take responsibility for the internal management of the project.

Chris and Laura have a wealth of experience in delivering projects having both worked on regeneration schemes.



Ricardo Ares
 B.Eng (Hons) PG DipLA
 CMLI

Director

Ricardo established Ares Landscape Architects in 2011. He has a particular interest in the design of streets and urban spaces, and their fundamental role in how we experience public life. He has a passion for transformational design in our towns and cities.

Over his professional career he has developed extensive experience in the design and implementation of Housing, Commercial and Leisure developments, Business Parks, and Educational Landscapes. Most of these projects have been located in the UK, with a number also overseas. Additionally, he has a particular specialism in Landscape Planning, having produced numerous Landscape and Visual Impact Assessments, and appeared as Expert Witness at Public Inquiry.

Ricardo is heavily involved in promoting the profession. He has spoken at a number of events here and abroad, advocating the benefits of good design. He is also a past Chair of the University of Sheffield's Department of Landscape Professional Review Group.

KEY PROJECTS

Public Realm

- Olympic Legacy Park
- Paddington Place
- South Dalmarnock
- Doncaster Library
- HUBS Square
- Heart for Hathersage

- Sheffield
- Liverpool
- Glasgow
- Doncaster
- Sheffield
- Peak District

Institutional

- Southborough HUB
- Wellingborough Crematorium

- Kent
- W'borough



Olympic Legacy Park - Sheffield



Paddington Place - Liverpool



Sylvester Street - Sheffield

CAREER PATH

2011 - Present	Ares Landscape Architects Director
2008 - 2011	Whitelaw Turkington Director
2006 - 2008	Whitelaw Turkington Senior Associate
2004 - 2006	Whitelaw Turkington Associate
2002 - 2004	Whitelaw Turkington Senior Landscape Architect
2001 - 2002	Topia Design Principal
1998 - 2001	Hyland Edgar Driver Landscape Architect

QUALIFICATIONS

2000	Chartered member of the LI The Landscape Institute
1996 - 1998	PG DipLA Land. Architecture The University of Sheffield
2005 - 2008	B.Eng Civil and Struct. Eng. The University of Sheffield



Louis Ashford
 BA (Hons) PG DipLA
 MA CMLI

Associate

Louis is a Landscape Architect and Urban Designer with over 15 years experience in a varying range of projects in the UK, the US and China.

With a natural design flair combined with a team-spirited, results driven attitude, Louis is responsive and focused on delivery. He has had the opportunity to undertake different roles in multidisciplinary teams from designer, through to public consultation and community forum liaison. He has worked closely with clients and has experience working for consultants, public bodies and contractors. His significant experience includes public consultation, contract document preparation, environmental planning and preparing Landscape and Townscape Assessments.

Louis has delivered a number of public realm enhancement schemes and assisted in developing strategic plans. He acted as the project Landscape Architect and site advisor for the regeneration scheme for Glossop town centre. The scheme encompassed town centre, high street, station forecourt and rationalisation of the space around the Municipal Building.



Heart for Hathersage - Peak District National Park



South Dalmarnock - Glasgow



National College for Nuclear Energy - Lake District

CAREER PATH

2013 - Present	Ares Landscape Architects Associate
2012 - 2013	Barrat Developments Urban designer
2006 - 2012	Scott Wilson / URS Landscape Architect
2004 - 2005	HLM Architects Landscape Assistant
2003 - 2004	Dietz Hartlage Landscape Assistant

QUALIFICATIONS

2015	Chartered member of the LI The Landscape Institute
2007 - 2009	MA Urban Design Leeds Metropolitan University
2005 - 2006	PG DipLA Landscape Architecture The University of Sheffield
2001 - 2004	BA (Hons) Landscape Design and Planning The University of Sheffield

KEY PROJECTS

Public Realm	Heart for Hathersage South Dalmarnock Glossop Town Centre	Peak District Glasgow Glossop
Commercial	Borough Yards Holmewood Masterplan	London Chesterfield

6.0 DELIVERABLES

This sections sets out our anticipated activities and deliverables for RIBA Stages 1 through to 7. This is as per the services discussed in our conversations to date. These services are not exhaustive and we are very happy to review and respond to any formal scope of works and agree an exact information required schedule.



STAGE 1: Preparation and Brief

Visit site and carry out initial appraisal

Review current site and project information and carry out checks to verify accuracy and fitness for purpose

Advise on any surveys the client would need to carry out e.g. Topographic survey, underground investigations, Arboricultural survey, Ecology survey etc.

Meet with the client to discuss the site aspirations and finalise the brief.

1 no. engagement workshop with stakeholders to input into the design brief

Deliverables:

- Written design brief (A4 document)

STAGE 2: Concept Design

Discuss and clarify Client's requirements and agree detailed scope of work.

Review relevant information/studies prepared to date.

Site visit and site appraisal: analysis of existing site and surrounding landscape/townscape context.

Attend meetings with the client and design team (3no. Assumed)

Establish landscape constraints.

Develop initial sketch landscape proposals in discussion with the architect and design team, as design development progresses.

Liaise with the cost consultant as required in respect of their cost estimation of the landscape proposals.

Discuss with the team and investigate as appropriate the integration of practical sustainability issues within the/public realm

Deliverables:

- Landscape strategy at 1:500 or other appropriate scale indicating layout and character of main spaces, key landscape constraints and issues, precedent studies
- Key levels including site sections as appropriate.
- Indicative materials palette including hard and soft materials
- Input of graphics and text into Stage 2 report