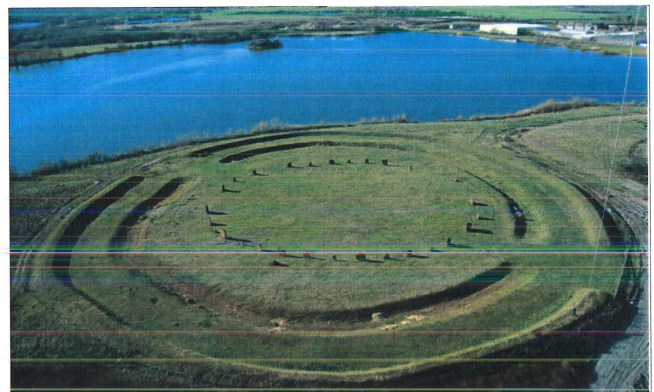


# Excavations at Butts Piece, Stanton Harcourt

Early Prehistoric Stanton

## Early Prehistoric

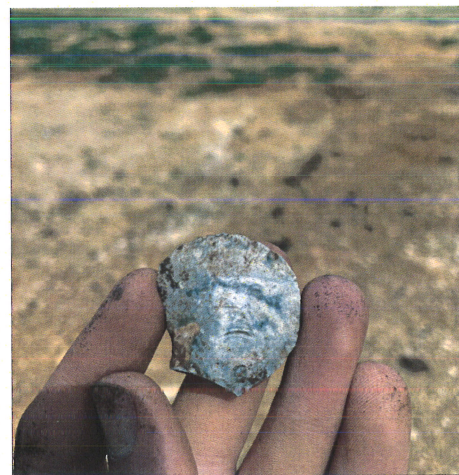
Only a small number of early prehistoric finds have been found on the site so far but the environs of Stanton are rich in Neolithic and Bronze Age sites. In particular is the spectacular Devil's Quoits stone circle (3000-2000 BC) to the southwest of site which lies within a zone containing numerous Bronze Age funerary monuments. The Devil's Quoits is open to visit.



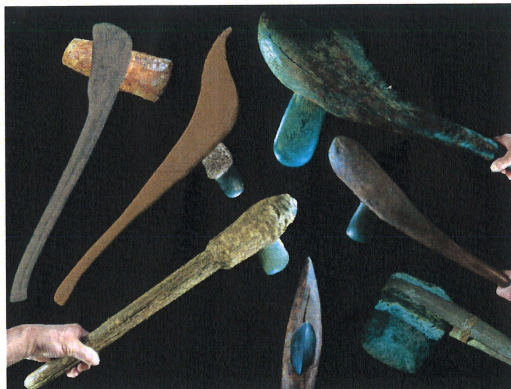
Devil's Quoits stone circle and henge monument.



Neolithic polished stone axe head found within a post-hole or small pit. Probably imported from Cornwall (to be confirmed).



Flint scraper, used for processing animal hides among other things



Examples of stone axeheads hafted into wooden shafts.