

## Sports Centre

Ash Green Sports Centre has a range of classes to attend for members and non-members with your first class FREE.

Also, easy to book racket facilities, just give us a call on **01474 707164** to enquire today.

### RACKET FACILITIES

Easy to book! Just ring us to book your spot. Members can book 7 days in advance. Non-members book 3 days in advance

#### EQUIPMENT HIRE INCLUDED

BADMINTON	£8.25-£10.00/HR
TENNIS	£5.50/ HR
SQUASH	£8.50/ ¾ HR
TABLE TENNIS	£8.50/ ¾ HR



### JOIN THE GYM AND GET A FREE


FULL INDUCTION, COMPLIMENTARY PROGRAMME, ONGOING SUPPORT AND FITBOOK

Our qualified trainer will take you through all the machines to make sure you are comfortable and ready to come to the gym confidently to reach your goals!

### HAVE YOUR FIRST CLASS ON US!

CALL OR EMAIL TO BOOK YOUR SPACE

Monday	10:00-11:00 Zumba Gold	18:00-19:00 Barre Fitness	18:50-19:50 Boxfit	20:00-21:00 Hatha Yoga
Tuesday	10:00-10:30 Gentle Circuits	10:45-11:15 Gentle Exercise	19:00-20:00 Circuits	
Wednesday	10:00-11:00 Pilates	19:00-20:00 Boxfit		
Thursday	10:00-11:00 Adult Ballet	18:15-19:15 Circuits		
Friday	10:00-10:30 Seated Zumba	10:45-11:15 Gentle Circuits		



## Thursday Lunch Club

Over 60? Come and dine with us at 12:00 noon every Thursday at the Youth & Community Centre. Our diners enjoy a freshly cooked quality two course meal prepared by our professional cook. The £7.00 charge includes tea or coffee.

We are also looking for an additional cook that would be available to cover holiday leave. This would be around 5 Thursdays a year.

For more information on joining the Lunch club or becoming our additional cook, please contact the Parish Clerk on 01474 702760.

# Ash-cum-Ridley Parish Council

AUTUMN 2023

Serving the local communities of Ash, Hodsoil Street, New Ash Green & Ridley

## FOR MICHAEL BROWN WITH GRATEFUL THANKS

Back in 1968, Mike and Pat Brown, with their young family, arrived in New Ash Green, bringing with them a passion for community involvement. Mike has continued to embrace the concept of New Ash Green wholeheartedly ever since that time. One of the first glimpses of Mike's community spirit was through the babysitting circle, where neighbours came together by taking turns to babysit for one another, earning points in return.

His involvement with New Ash Green Primary School began when he joined the Parent-Teacher Association, which was a vital link between parents and school staff. Eventually he became Chair of the Governors in the early 80s and remained as a Governor until December 2020. In this capacity, Mike oversaw and contributed to many pivotal changes within the school. Mike also sat on the Governing bodies of Longfield Comprehensive School and Milestone Academy.

In 1975 Mike was elected as a member of Ash cum Ridley Parish Council. By 1977 he had become Chair of the Council, which is a role he held until his retirement in May of this year. His legacy from all those years of service can be seen as a tireless commitment to enhancing the lives of local residents.

Amongst the most important and significant of his many achievements are:

- His crucial role in collaborating with various agencies, including the residents of Swan Farm, to establish Barnfield Park, a formal site for the Gypsy and Traveller Community.
- Securing Northfield, a 65-acre public open space on lease from NAG Village Association, and jointly managed by Ash cum Ridley and Hartley Parish Councils.
- Supporting the addition of a gym at Ash Green Sports Centre, which was completed in 1996.

Mike has a profound knowledge of the Parish, and this has always provided invaluable guidance to the Planning Committee. He has also chaired the Focus Group which addresses issues such as anti-social behaviour, crime, and concerns from residents in liaison with the Police, Community Safety Unit, Community Wardens and other agencies.

When he took early retirement from his position as an Engineer with the Electricity Board it gave him more time to be involved in various other community affairs. He gained a law degree, followed by a master's degree from the University of Kent, and served as a Magistrate until his retirement from that at the age of 70. He has participated on appeals panels for school admissions, ensuring that the principles of fairness and equity were upheld. Mike has served on the Capelands Residents' Society Committee, of which he was Chair for almost 20 years. Early meetings were enjoyable and convivial and served with Mike's homemade Elderberry wine. He has enjoyed frequent bike rides throughout the village and the wider parish which has enabled him to connect with residents whilst enjoying the natural beauty of the local countryside.

Thank you, Mike, for your time, expertise and dedication to the community.



## Remembrance Service

The Parish Council will hold its traditional service at **Ash War Memorial** on **Saturday 11<sup>th</sup> November**. Please gather at 10.45am. A 2-minute silence will be observed at 11.00am, followed by tea and coffee with all donations to the poppy appeal.



## Local Community Groups

### Simply Singing

A community initiative for those who enjoy singing for pleasure

Every 4th Tuesday of the Month  
10am until 12 noon  
New Ash Green Village Hall

Free to All  
**New Ash Green Community Hub**

Every 1st Tuesday of the Month  
10am until 12 noon  
New Ash Green Village Hall

Come and join us for the usual meet up over tea and cake.  
All are welcome to join.

### SOCIAL MEETING PLACE

What is it?

For those wishing to meet new people in FRIENDLY surroundings to ENJOY COMPANY, play pool, darts, PLAY board games and purchase refreshments.

Where is it?

New Ash Green Pavilion  
Punch Croft  
New Ash Green  
DA3 8HS

When is it?

LAUNCHING  
2nd JUNE 2023  
12.30pm – 2.30pm  
Every first Friday  
of the month

Please contact Jackie West – Community Warden for more information regarding these local groups.  
Contact Number **07811271259** or Email **Jackie.west@kent.gov.uk**

### Carers/Memory Café

Every 2nd Tuesday of the Month  
10am until 12 noon  
New Ash Green Village Hall

Free to All

Come along for free refreshments, information and support!

### Little Legs Community Hub

Free meeting place for those caring for children who may feel isolated or just want to meet other Parents/Grandparents/Carers for a chat over a cup of tea

Every 3rd Tuesday of the Month  
10am until 12 noon  
New Ash Green Village Hall

Everyone welcome

**NEW ASH GREEN SOUTH EAST WARD:** Councillors Roxana Brammer (Vice Chair), Jill Clucas, Chris Gorton, Anna Jauch, Mark Manley, Isabel MacLeod

**NEW ASH GREEN NORTH WEST WARD:** Councillors Matt Aspinall, Carol Clark, Sarah Hobbs, Shaun Fishenden (Chairman), Pat Kirtley, Vusi Ngwenya

**ASH WARD:** Councillors Jake Scott, George Pender

**HODSOLL STREET & RIDLEY WARD:** Councillors Frank Cottey, Margaret Howie

PARISH COUNCIL WEBSITE: [www.ashcumridley-pc.gov.uk](http://www.ashcumridley-pc.gov.uk)

PARISH CLERK: **01474 702760** EMAIL: [enquiries@ashcumridley-pc.gov.uk](mailto:enquiries@ashcumridley-pc.gov.uk)



## Memorial Garden

The Parish Council constructed a new memorial wall in 2020 due to the limited burial space in Ash Burial Ground.

The wall enables ashes to be interred in the adjoining memorial garden and a plaque placed on the wall to remember loved ones for eternity.

The cremated remains of persons, who, immediately before death, were inhabitants of the parish of Ash-cum Ridley, are eligible to be interred in the Memorial Garden. Persons, who were normally resident in the parish, but who immediately before death were being nursed or cared for outside the parish, are also eligible.

If you would like to include a loved one on our memorial wall and inter their ashes, please contact the Clerk on [enquiries@ashcumridley-pc.gov.uk](mailto:enquiries@ashcumridley-pc.gov.uk) or find further information on [www.ashcumridley-pc.gov.uk](http://www.ashcumridley-pc.gov.uk)



### Community Focus Group

Representatives from Kent Police, Sevenoaks District Council Community Safety Unit, the Anti-Social Behavior Officer, Kent Community Warden, Kent Fire & Rescue Service, the Parish Council, Village Association, Neighborhood Watch, New Ash Green Town Team and interested Residents Societies meet quarterly to discuss local concerns and issues such as Anti-social behavior, locations and issues, Parking, Youth Provision, neighborhood Watch.

If you have concerns that you would like to raise, please contact the Parish Clerk on 01474 702760, email [enquires@ashcumridley-pc.gov.uk](mailto:enquires@ashcumridley-pc.gov.uk) or Community Safety Unit direct on 01732 227000, email [community.safety@sevenoaks.gov.uk](mailto:community.safety@sevenoaks.gov.uk)

It has become apparent that the use of Nitrous Oxide has increased within the area. To Report the use of Nitrous Oxide sometimes referred to as laughing gas and the associated anti-social behaviour please see the below options:

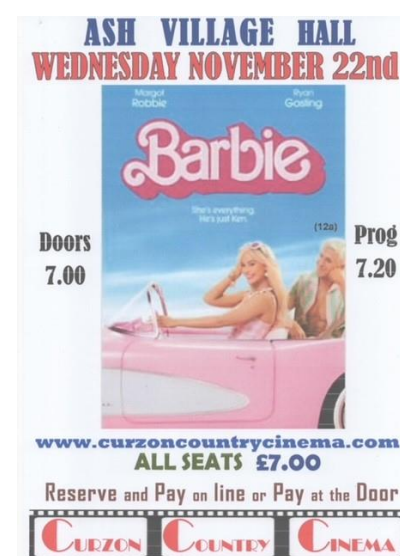
**Call 999 if you or someone else is in immediate danger.**

Call 101 to contact the police or report online if the crime is not an emergency.

Fill in an online report via Sevenoaks District council safety unit - [www.sevenoaks.gov.uk/info/communitysafety](http://www.sevenoaks.gov.uk/info/communitysafety)



### Movie Night at Ash Village Hall



### NORTHFIELD ANCIENT WOODLAND

The Northfield management committee have agreed that coppicing will take place within the ancient woodlands within Northfield.

#### What is coppicing?

Coppicing is a traditional woodland management technique that dates to the Stone Age. It involves felling trees at their base to create a 'stool' where new shoots will grow.

You can recognise a coppiced tree by the many thin trunks or 'poles' at its base. Most tree species can be coppiced but the best suited of our native trees are hazel, sweet chestnut, ash and lime.

#### What's it for?

Coppicing was originally used to ensure a regular source of firewood and timber. Traditionally, the long straight poles produced by coppicing would have been used for fencing, building and in the garden as bean poles.

These days, coppicing is primarily a way of improving the health and biodiversity of a woodland area by opening it up to the sunlight and allowing a wider range of plants to flourish.

We will share the dates this will take place when this has been confirmed.

### ADVICE, MEDIATION & USEFUL NUMBERS

Kent County Council .....	03000 418181
Sevenoaks District Council.....	01732 227000
Kent Police - Emergency Calls.....	999
Kent Police - Non Emergency Calls .....	101
KCC Community Warden .....	07811 271259
New Ash Green Village Association.....	01474 872691
New Ash Green Library.....	03000 413131
Doctors Surgery .....	01474 873828
Village Pharmacy .....	01474 873811
Citizens Advice.....	03003 309001
Arriva Northfleet .....	01474 535138
West Kent Mediation .....	01732 469696
Samaritans.....	116 123 (free)
Childline .....	0800 1111
Community Cupboard .....	07526 823122
Kent Integrated Domestic Abuse Service .....	08081 689111
Papyrus Suicide Prevention Under 35s.....	0800 0684141 (free)
Young Minds.....	<a href="http://www.youngminds.org.uk">www.youngminds.org.uk</a>

### Dementia Support Charity - ADSS

If you have been diagnosed with dementia or you are supporting a friend or family member with dementia, we can help you. We empower people affected by dementia to carry on their chosen lifestyle. We equip people with knowledge and practical support to live well with dementia and we also understand the impact of dementia on family and friends.

We will partner with you and discuss not only what your needs are but what you want out of life, make plans for the future and help you achieve this. We will help you to create an individual support plan and work with you to achieve the results you want. We can meet with you at your home, at our Safeharbour Memory Wellbeing Centre or somewhere else where you feel comfortable, alternatively we can discuss the support you need over the phone or via email. We will help you understand your diagnosis of dementia and signpost you to the right support for you.

This service is free, and anyone can refer to us. If you live in Dartford, Gravesham, Swanley, Medway, Swale or West Kent areas and want our support please contact us on **0800 035 2221** or email [referrals@alz-dem.org](mailto:referrals@alz-dem.org)

