

# MICKLEHAM PARISH Magazine

A community magazine for Mickleham and Westhumble



A.N. Colwell 1984

February 2022



## PROFESSIONAL CARPET & UPHOLSTERY CLEANING

- Local family running company
- Over 100's 5-star Reviews
- Award-Winning Customer Service
- Safe for Kids, Pets, and the Environment
- Effective against dirt & stains from drinks, food, makeup, pets & more

**SURREY  
MAIDS**

### REGULAR CLEANING

- Professional Equipment
- Trained Staff
- DBS Checked
- Flexible Hours

### DEEP CLEANING

- Moving out/in services
- Seasonal Cleaning
- Oven Cleaning
- Commercial Cleaning
- Tenancy
- Windows Cleaning
- Schools

**PATTY PLUS** 01306 866288  
SERVICES LTD OFFICE@PATTY.PLUS  
WWW.PATTY.PLUS

## Bullimores



Accountants for Life  
Tax • Accounts • Probate  
Inheritance Tax &  
Executorship

T: 01306 880880

E: partners@bullimores.co.uk

W: www.bullimores.co.uk

Bullimores LLP licensed to carry out the reserved legal activity of non-contentious probate in England & Wales by the ICAEW

# MICKLEHAM PARISH Magazine

February  
2022

## Mickleham Parish Magazine

A community magazine for Mickleham and Westhumble published under the auspices of Mickleham PCC with an independent editorial panel.

The magazine is published at the beginning of each month except January and August.

COPY DEADLINE  
MARCH MAGAZINE  
Sunday  
6<sup>th</sup> February

send to:

Sue Tatham  
St Anthony, Pilgrim's Way  
Westhumble  
Dorking RH5 6AW  
01306 882547  
editor@micklehammag.co.uk

Contributions in any form are welcome as are good quality photographs. There is no charge for advertising local charity and community events. However the editors reserve the right to shorten omit or reformat articles submitted for publication depending on space.



Printed by Holbrooks Printers  
Portsmouth

Mickleham Rectory

Dear friends

I want to acknowledge that there has been much doom and gloom over the past few months. Sadly, some have had to cope with bereavement or significant illness, while we have all faced rising cases of Covid, a virulent new strain, inflation on the rise, damp and dreary weather. I have even had to buy a pair of Wellington boots to cope with the mud. It has been hard sometimes to stay positive. Once again Christmas was overshadowed by the pandemic, although most of us were able to see family and friends, which was lovely. At the start of 2022 we may wonder if we will ever be able to enjoy more normal times, without masks or fear of catching Covid. So how do we cope? What helps me is having hope.

Most of us find we feel better when we have hope of a brighter tomorrow and something to look forward to. But true hope needs to be grounded in reality and based on more than just a wish. I need to have some confidence that the things I hope for will happen. Although I do think that vaccinations, boosters and medical advances will most likely reduce the impact of Covid, based on the evidence I have read, I am not completely certain. Certain enough to have the vaccinations but not sure enough to make any long-distance travel plans.

However I am looking forward to those things which seem certain such as the coming of spring. There are already signs it is beginning. Snowdrops appearing lift my spirits and give me hope of spring flowers, buds on trees, birds singing and warmer weather. As I moved to Mickleham in the autumn, I am looking forward to discovering what might be hidden in the Rectory garden in the way of bulbs, flowers and which trees might have blossom. Although not a great gardener, I enjoy watching nature green and bloom. Another joy this time of year is the longer hours of daylight. Lighter evenings give me hope of summer and the possibility of warmth and sunshine, although I hesitate to claim this as a certainty.

In the Bible the flourishing of nature is sometimes used as a metaphor for hope and in the book of Isaiah there are some lovely references including the desert rejoicing and blossoming like a crocus (35. 1-2). But as a Christian my true source of hope lies in my faith in Jesus. Interestingly Hebrews 11.1 describes faith as being confident of what we hope for and the assurance of what we do not see. Faith gives certainty. Faith is not seen as a blind step of wishful thinking but as trusting in the God who has promised us much. My Christian hope is not one that depends on things around me changing or improving but on the fulfilment of promises made by God, who has become one of us in Jesus. I cannot see God but through faith I trust he is at work in the world and in me. Lent approaches now with Ash Wednesday on 2<sup>nd</sup> March and it is an opportunity to both prepare for and look forward to Easter and to welcoming again the new life God freely offers us. A life given by the seemingly hopeless death of Jesus. A life arising from the resurrection of our Saviour. A life of joy and hope which we claim by faith.

God Bless

*Sandra*

The Rev Dr Sandra Faccini, Parish Priest

Main working days: Monday, Tuesday and Sunday  
01372 417664 and 07763 488861 parishpriest@micklehamchurch.org.uk



## Stepping Stones

MORE THAN JUST A PUB

### GENERAL STORE

SERVING ESSENTIAL BASIC ITEMS

### CAFÉ-BAR

SERVING BREAKFAST

MORNING COFFEE

SANDWICHES & CAKES

AFTERNOON TEA & SCONES

### RESTAURANT & AL FRESCO DINING

SERVING FRESH CLASSIC PUB-STYLE FAVOURITES

SUPPORTING LOCAL PRODUCE AND SUPPLIERS

### TAKE-AWAY

10% DISCOUNT FOR MICKLEHAM MAGAZINE READERS

### LIVE MUSIC EVENTS

Last Monday night of the  
month from 7.30 pm

01306 889932

steppingstonespub@gmail.com

www.steppingstonesdorking.co.uk

Please check website for up-to-date menus,  
events and current opening times

## Sherlock Funeral Service

*Sherlock Funeral Service is an  
Independent family owned business,  
established over 100 years*

- Private Service Chapel & Rest Rooms
- Home visits arranged if required
- Pre-Paid Funeral Plans available
- Free Parking

Telephone: 01306 882266

Trellis House, 190 South Street, Dorking RH4 2ES.

Email: office@sherlockandsons.co.uk



Funeral Directors & Monumental Masons





## St Michael's Church Services

See calendar on centre pages for details of all services

10 am Sunday Services also available on Zoom

Joining information for both Zoom and telephone users is available in Pews News Online each week. If you would like to join us by Zoom then contact Alison Wood for the codes or to ask her to include you on the emailing list for Pews News: [admin@micklehamchurch.org.uk](mailto:admin@micklehamchurch.org.uk) / phone 01372 376443. We hope as many of you as possible will be able to join us for worship.

Please refer to Pews News Online for the latest information. If you missed any of the services, or would like to revisit them, all are available on the church YouTube channel:

<https://youtube.com/channel/UCl4pbewCT91iZhcd0EjJBlw>



First Saturday of the month

## Coffee Morning at Westhumble Chapel

Come along between 10 am and noon for coffee and cake £1. Free drinks for children

Saturday  
5<sup>th</sup> February

Everyone welcome

For further information call Jonathan Blake 07787 126966



Sunday  
27<sup>th</sup> Feb

Mickleham Village Hall  
3.30 to 5 pm

Come along and join us for family fun,  
games, songs, food and crafts.

For children aged 3 – 10

All are Welcome

To reserve your place or find out

more details, email Sarah Blake

by Friday 25<sup>th</sup> February

[SarahJbl@outlook.com](mailto:SarahJbl@outlook.com)

All children must be  
accompanied by an adult.  
Please take a lateral flow  
test before arriving.

ST MICHAEL AND ALL ANGELS CHURCH



## Bible Study

Thursday Morning Group  
Continuing with the study of the Twelve Disciples  
in the Westhumble Chapel

11 am - 12.30 pm

Contact Alison Wood 01372 376443

[Alison.wood29@btinternet.com](mailto:Alison.wood29@btinternet.com)

Men's and Women's  
Saturday Breakfasts  
at the Stepping Stones

9 – 10 AM

A social gathering open to everyone

## WOMEN'S BREAKFAST

3<sup>RD</sup> SATURDAYS

19<sup>TH</sup> FEBRUARY

Book with: Stephanie Randall

0773 6933 482

[srandall55@gmail.com](mailto:srandall55@gmail.com)



## MEN'S BREAKFAST

4<sup>TH</sup> SATURDAYS

26<sup>TH</sup> FEBRUARY

Book with: Andy Diamond

[diamo1@hotmail.co.uk](mailto:diamo1@hotmail.co.uk)



## St Michael's Church Community Group

### Helping Hands

Helping Hands was started many years ago by St Michael's under the leadership of Mary Banfield, and was advertised through the parish magazine, hoping to reach as many people in the parish as possible. It offered transport maybe to a station, a doctor's appointment, or a meeting. And also for prescription collections, shopping, helping with odd jobs.

We feel that it is time to bring Helping Hands back into operation, in conjunction with the WhatsApp group. However, to make it work we need a list of drivers and anyone with expertise in plumbing, carpentry or such like, who would be willing to be contacted at any time to come to the aid of someone with a problem.

Before we advertise this service for local residents in need of some kind

help with either an odd or not-so-odd job, we need the volunteers who would be willing to volunteer their skills in such a way. We would be most grateful to hear from anyone who would be prepared to go to the rescue of a damsel or gentleman in distress who has a problem that needs solving.

If YOU feel that you can help us bring Helping Hands back to life please contact Mary Banfield [mgbbmw@aol.com](mailto:mgbbmw@aol.com) or Frances Presley [jasempres@gmail.com](mailto:jasempres@gmail.com)

### New Group Member

We are pleased to welcome Kay Cain who, apart from providing a much-needed direct link with Westhumble, will obviously bring the Group's average age significantly down and thus broaden our thinking...



### Jubilee Event

There is to be a four-day Bank Holiday weekend from 2nd-5th June (the latter also being the author's birthday... it was kind of Her Majesty to bear me in mind), and celebratory events are planned, although currently in their early stages. The Community Group will be heavily involved, but this is clearly a community-wide celebration which will need the involvement of other groups and organizations in the parish, and a separate organizing committee. More specifics in the next magazine. We have plenty of fun ideas already, to which we will now be adding the possibility of our own local competition for a new Platinum Pudding recipe. Mark Day



## Lent Lunches are Back

The Church Community Group has not been idle over the past few weeks. In spite of the Christmas break we have, or I should say Mary Banfield has, cajoled, forced, bribed, five very kind people to organise a Lent Lunch.

There will be one a week during the weeks of March 7<sup>th</sup>, 14<sup>th</sup>, 21<sup>st</sup>, 28<sup>th</sup> and April 4<sup>th</sup>, hosted by Mary Banfield, Liz Absalom, Jenny Hudlass, Alison Wood

and Wendy Wyatt respectively. At the time of writing it is difficult to state the final dates and venues which will depend upon the covid situation. There will be sheets in church to sign up for your preferred dates in the next couple of weeks, but the venues will not be known till nearer the time. If you are not coming to church at the moment please email either of us.

We shall print a full list of dates and venues in the March magazine, but as this only comes out shortly before the first date, we shall hope to have full details in Pews News as soon as we can.

Mary Banfield [mgbbmw@aol.com](mailto:mgbbmw@aol.com)  
Frances Presley [jasempres@gmail.com](mailto:jasempres@gmail.com)

Please support our Food Bank collection – see page 26



## Sausages and Skittles

Saturday 19<sup>th</sup> February

7.15 pm Mickleham Village Hall

The Village Hall is booked...the alley is ready. Teams of five are intended and potential team skippers are being lined up and identified by the Group. There may be teams representing different locations in the parish, or different clubs or societies. Entry fee £25 per team/£5 per head including sausages! Pay bar.

If you would like to take part, or skipper a team, please contact:

Mark Day [mickleham@hotmail.com](mailto:mickleham@hotmail.com) or Will Dennis [wdwdennis@icloud.com](mailto:wdwdennis@icloud.com)



Superb professional  
cleaning of carpets  
oriental rugs  
upholstery curtains  
and leather  
Guardsman  
anti-stain protection

- spot stain and odour removal
- leather cleaning specialists
- flame retarding
- dust mite reduction service
- all work fully insured & guaranteed

For a free no obligation quotation call today  
Freephone 0808 144 9071  
John Joannides 28 Bracken Close Bookham

**Safeclean**  
*The furnishing care specialists from GUARDSMAN*



*Pinehurst  
Rest Home*

*We aim to provide an excellent service at competitive rates supporting emotional physical and social needs of our clients always respecting and protecting their status as adults.*

- Residential and 24-hour daycare
- Excellent cuisine
- Facilities for disabled: medic bath / lift
- Home doctor in attendance
- Single & sharing rooms
- Convalescent & short stays
- Lounge with TV & piano
- Separate dining room
- Physiotherapist chiropodist & hairdresser
- Entertainment: theatre visits / parties & cabarets held on premises

**National Trust Road Box Hill**  
**Mickleham Dorking Surrey RH5 6BY**  
Telephone: 01306 889942 / 888253

*Dorking  
Decorators*  
PROFESSIONAL  
PAINTERS & DECORATORS

**Established Local Family Business**

- Over 20 years' experience
- Internal & External
- Commercial & Domestic
- Friendly, First Class Service
- Surrey / Sussex / Greater London

**FREE ESTIMATES**  
**01306 640418**  
**www.dorkingdecorators.co.uk**  
As approved by Checkatrade

**CHRIS HULME**  
*Garden Machinery*

*Service and repair of all makes and models of:*

- Ride-on mowers
- Rotary mowers
- Cylinder mowers
- Chainsaws
- Strimmers
- Hedge cutters
- Rotavators
- Blower vacs

*Quality secondhand machinery  
Collection and delivery service*

*The Barn Cowslip Lane Mickleham 01372 377757 / 07950 961606*

• Quality Flowers • Personal Service • Customer Satisfaction •

**FLOWERS by ELAINE**

- Wedding Specialists •
- Qualified Florists • Fresh Flowers & Plants • Local Delivery •
- Varied Gift Selection • Corporate Functions • Special Occasions •
- Funeral Tribute Specialists • Interflora Worldwide •

66 High Street, Dorking, Surrey RH4 1AY  
T: 01306 883511 • E: fbe@btconnect.com  
www.flowersbyelaine.co.uk



**SIMON HOOPER**

**For all your decorating needs...**

Professional friendly and speedy service at all times

- Fully insured
- Insurance work
- Exterior painting
- Interior decorating
- Free quotes & advice
- Oil & Water-based products
- Commercial / Domestic work
- Wallpaper hanging & removal

07947 135 376 0208 3978 962  
**www.slhdecoratingservices.com**



## St Michael's Church Community Group Carol Singing Pub Crawl

With the uncertainty about the new Covid variant there were reservations about events planned during the lead up to Christmas, but as it was essentially an outdoor event we decided to go ahead with the carolling round the pubs on the Friday evening before Christmas. When I walked down to the Stepping Stones for the start of the carolling I did not know how many people to expect. By 7.10 pm there were only six of us, but we were soon joined by more and we started singing in the rear garden, socially distanced as much as possible. The allocated half hour soon passed and after enjoying the Stepping Stones' mince pies (thank you, Tina) it was time to move on to Mickleham.

We congregated in front of the newly-refurbished Running Horses where we accepted requests for carols. By this time our initially rusty voices were well exercised. Thank you to Manu and the Runners for their hospitality. We then moved on to our final destination, the King William, where a number of people were eagerly awaiting our arrival. We sang a wide variety of carols in the garden and enjoyed a wonderful selection of refreshments provided by Eamonn and his staff – many thanks.

Thank you to all those who attended. Throughout the evening singers came and went, but we had about 35 at each venue. Considering the weather this was marvellous. We collected a very



welocme £84. (Several people remarked they did not carry cash anymore.)

For those that missed out the excitement this year you could always come along next year.

Jonathan Blake  
PS Many thanks to Jonathan for organising this popular annual event.

## Advent Windows

More than 40 people, most of whom were not regular churchgoers, attended this year's launching of the Community Advent Window event on Sunday 29<sup>th</sup> November with the switching on of the church's Christmas trees by our new parish priest Sandra Faccini. Thanks to Manu, new owner of the 'Runners' for sponsoring half of the cost of the trees and to Jason Wilson

for organising the trees, ably assisted by Jane Brown and Penny Butcher.

There were slightly fewer window participants this year, probably due to the novelty factor in last year's strict lockdown, but the quality of the 2021 windows more than made up for it. Thank you to all those who took part.

Most windows events were well attended and achieved their primary

purpose – the opportunity to meet people who otherwise may just be names on WhatsApp or in the mag.

I would add that the joint effects of the lighting at the 'Runners', the church, the Old Stores, the bus-stop and individual houses betwixt, made for a quite dazzling display at the core of Mickleham, an idea that perhaps we could build on in 2022.

Mark Day



*More photographs on page 17*



# St Michael's Church Community Group

## The Christmas Café

*O, Come all ye faithful*



We at The Meeting Room are very pleased that your community has chosen to support us. Two of our artistic and talented clients were thrilled to be invited by Andy Diamond to present a stall at the Christmas Café in your beautiful chapel. Such opportunities increase their self-esteem and confidence. The organisers made us feel very welcome and we were very surprised and delighted to receive a donation of £100. Thank You for your generosity.

Due to Omicron we had to adjust our Christmas Day plans and instead of a Christmas Party at Fetcham Village Hall we delivered 60 Christmas lunch boxes to people on their own or who would struggle to cook a meal for themselves. Eva Dillon helped with the preparations on Christmas Eve and Andy Diamond helped with deliveries on the day.

The Christmas Lunch boxes contained: roast turkey and ham plus all the trimmings along with Christmas pudding, a card, presents, and treats. We received many messages of thanks such as: 'Couldn't believe it!' 'So much!' 'Cream AND custard and the perfect size pudding!'

HAPPY NEW YEAR TO YOU ALL.

Once again the Chapel had become a place, where the community were making good use of this extraordinary building within their midst. And the weather? The rain held off until home time. Who cares when we had come together after months of uncertainty for a few hours of 'catch up' with friends and neighbours and warming mulled wine? All proceeds from this event were donated to The Meeting Room, Leatherhead (details of this charitable organisation below)

Jenny Hudlass

\*The Meeting Room is a registered charity operating in the Mole Valley and Epsom areas. The charity was founded in 2014 by Graham Peddie MBE, who was a leading advocate for assisting the most vulnerable people in our community. Clients are of all backgrounds and ages and our focus is to provide meaningful support to those with a wide variety of issues including homelessness, poverty, physical or mental health difficulties, breakdown of relationships, social exclusion and loneliness and issues with alcohol or drugs.

The Chapel Christmas Café was making a welcome return on 11<sup>th</sup> December, following a year out due to Covid restrictions in 2020. That is not to say we were not ready to cancel out once again this year, as we waited anxiously for government updates on social gathering plans.

The weather forecast promised to be okay, with a possible rain shower later in the day. At this point I have to add that the only person affected by rain would be ME. I was taking up my usual pitch on the Chapel patio serving oodles of mulled wine.

Our stalls included patchwork items, Alison's magnificent quilts, The Garden Shed, and a stall run by volunteers in aid of The Meeting Room, Leatherhead.\*

By opening time, a steady flow of people had begun to arrive. The aromatic mulled wine was proving to be a popular beverage, sorry Anne, who was doing a grand job with the tea urn, but no competition for the alcohol.

As daylight faded the Chapel took on a real Christmassy feel, with fairy lights both inside and out, and the chapel itself positively buzzing with shoppers.

## Carol singing in the Westhumble Chapel Ruins



Despite great uncertainty as to whether the event would run at all or whether anyone would feel confident coming out to join us we had an amazing turn out of more than 60 people. The singing was very enthusiastic although we did not stay out for a very long as it was the coldest night of the month, fingers and toes were soon going numb with the cold.

It was time to retire back to the garden of Chapel Farm for a warm up around the brazier, a warming mulled wine and mince pie. The horses and donkeys at the farm enjoyed seeing everyone and sharing in their carrot

treats. John added an extra treat this year by distributing some Connisbee chipolatas which went down well. He was also in charge of the collection for the Gambian Horse and Donkey Trust which this year took an amazing £277.00. Thank you very much for braving the cold and the Covid to support this event. It was wonderful to welcome you all back to Chapel Farm after a quiet year last year.

Thanks to the Blakes and the Venthams for their help in running this event. We hope that you all had a joyful Christmas and we wish you a happy and healthy new year.

Liz Absalom

## Christmas Eve Crib Service

'Twas the night before Christmas, when all through the street,  
costumed children shuffled their feet ...

Christmas Eve saw a fantastic turn out for the Crib Service. Even though the drizzle had set in, it did not dampen the spirit of the community and their families as we all paraded down Adlers Lane, while listening to the Christmas story.

The field (adorned with fertiliser for the occasion) was beautifully laid out with the shepherds' fire (complete with blow torch) ready to delight us, and a warm inn around the corner. Thanks to all the children who participated and for dressing up so wonderfully. There were angels, kings, shepherds, a shining star and a (very) well-behaved baby Jesus, who all helped to bring the Christmas story to life.

Thank you to all those who made a reading and to those who worked tirelessly to set up the service. It was so wonderful to meet everyone again and to even sing a few carols, which really lifted the spirits and readied us all for Christmas day.

## Anne Weaver writes ...

A huge thank you and a virtual hug to everyone who helped in organising the Crib Service, what a team! There were many who helped but I would like to thank especially Jonathan and Sarah Blake, and the Adshead family, all

of whom had pivotal roles and proved adept at chasing curious cows back into their part of the field. In addition, thank you to all the families who took part by reading or joining the tableau. This year more than one hundred adults

plus their children and grandchildren supported us despite the unreliable weather. It was a splendid occasion and a wonderful way to mark the start of Christmas. We look forward to seeing you all again next Christmas Eve.

Elly McIlwraith-Jay



New Year's Day was heralded by a kiss in the sky followed by the Coffee Morning at the Westhumble Chapel where bacon butties were on offer as well as cakes, mince pies, tea and coffee. An added bonus was the warm weather. People happily chatted outside in the sunshine.



## Fully Experienced Carer/Companion

- PART-TIME LIVE-IN • DRIVING LICENCE HOLDER •
- HOURS to SUIT • BABY/CHILD SITTING •
- EXCELLENT REFERENCES • FULLY INSURED •

Reliable, Kind and Caring

07748 743 732

High Quality, Professional Home Care and Companionship Enabling People in Mole Valley & Surrey to Remain Living Independently at Home



## YOUR LOCAL PROFESSIONAL TREE HEALTH CARE SPECIALISTS

Felling, Pruning, Stump Removal, Planting, Logs,  
Woodchip, Air Spade Services, Consultancy

Call us on 01306 741800  
office@treeline.co.uk • www.treeline.co.uk



Your visiting

PHYSIOTHERAPIST

SUE JUDD MCSP HCPC

40 years of experience.

All your requirements for elderly  
mobilisation & post-operative  
rehabilitation.

07834 227999 sue-judd@sky.com

## EDE BROS

REMOVALS • STORAGE • SHIPPING

- Since 1926, Capel-based and family owned
- STRESS-FREE, local, national & worldwide
- Contact us for your FREE estimate...

01306 711293  
edebros.co.uk

EDE BROS

REMOVALS • STORAGE • SHIPPING  
Dorking, Surrey, England  
01306 711293  
www.edebros.co.uk

EDE BROS

REMOVALS • STORAGE • SHIPPING  
Dorking, Surrey, England  
01306 711293  
www.edebros.co.uk

EDE BROS

REMOVALS • STORAGE • SHIPPING  
Dorking, Surrey, England  
01306 711293  
www.edebros.co.uk



Gill and Paula would like to warmly welcome you to Aspen Care offering assistance to enable you to live in the comfort of your own home with care and companionship.

- A happy alternative to a care home
- Cover while your family or carer takes a holiday
- Recuperation and rehabilitation following a hospital stay
- All aspects of personal care medication and meal prep
- Dementia care disability chronic & critical conditions end of life care
- Accompaniment to appointments

Call for a chat to discuss your requirements.

We look forward to hearing from you.

01737 354821 info@aspenliveincare.co.uk www.aspenliveincare.co.uk

## P J Oliver & Son

Window cleaning  
House & Garden Maintenance  
Roof Repairs, Guttering  
Painting & Decorating  
Ground works, fencing, hedge cutting,  
and tree work

Also Pest control

Call Phil on 07722 158111

Email Oliviagarrett79@gmail.com



## YOUR LOCAL FARM SHOP ON DENBIES WINE ESTATE

farm shop deli plant centre

Open daily 9.30 to 5.30 and Sundays 10 to 5 Free parking

LOCAL PRODUCE : Chalk Hills Bread; Mandiras Kitchen meals

Seasonal food : Seville Oranges, Blood Oranges, local marmalades

We deliver veg bags and more to the local area on Tuesdays and Fridays  
see [www.vgfarmshop.com](http://www.vgfarmshop.com) or email [vegbag@vgfarmshop.com](mailto:vegbag@vgfarmshop.com) for details

LOCAL • NATURAL • ETHICAL 01306 880720 [www.vgfarmshop.com](http://www.vgfarmshop.com)

## The Garden Shed's Christmas Craft Workshop



Our Christmas Craft Workshop was as popular and well attended as ever, proving that this time of year isn't just for children.

In response to feedback we offered more locally foraged, biodegradable

and recycled materials to work with and the hall was full of greenery. Following step-by-step-guidance and support from the organisers everyone was set to make a start on their chosen craft; Christmas wreath, table centrepiece or bottle

garden. Festive tunes and refreshments kept everyone in the Christmas spirit and inspired participants to add a touch of homemade charm to create colourful decorations and memorable gifts. The results were truly impressive.

Cathy Lee



## Fruit Tree Pruning Workshop

with Alex Valsecchi

Sunday 27<sup>th</sup> February

10 am - 1.30 pm £25

Chapel Farm, Westhumble

See our website for details  
[www.gardenshed.club](http://www.gardenshed.club)

Coffee and tea with cake and biscuits provided  
Booking Essential

Pauline Davis 07759 646353 [paulinemdavis@gmail.com](mailto:paulinemdavis@gmail.com)

Susie Gowenlock 07768 923088 [susiegowenlock@gmail.com](mailto:susiegowenlock@gmail.com) Cathy Lee 07500 767240 [cplee1603@gmail.com](mailto:cplee1603@gmail.com)



## Have you resolved to get fit this year?

Then look no further. The Mickleham and Westhumble Badminton Club has resumed play after the interruption due to Covid and would be delighted to welcome you. There are currently 40 members and a number of them meet every Wednesday between 6 and 8 pm to use the magnificent facilities of Box Hill School's Sports Centre which provides four badminton courts. Not

only are members fitter than they were but many have made new friends, reflected in the fact that 35 of us met for an excellent Christmas dinner at the Running Horses in December. If you are interested in joining, even if you have never played before, please contact our Club Secretary Sarah Blake on [tinkerbell0044@hotmail.com](mailto:tinkerbell0044@hotmail.com)

David Ireland







## Mickleham and Westhumble Horticultural Society 'Hosts of Golden Daffodils'

We shall soon be enjoying daffodils springing into flower in our gardens, in hedgerows and on roadside verges. Perhaps sadly, in spite of the huge number of amazing daffodil cultivars that have been raised, we shall see very few fields or orchards of *Narcissus pseudonarcissus*, the wild daffodil that William Wordsworth saw and described in his most famous poem 'I wandered lonely as a cloud'. It is this poem that links Wordsworth to the wild daffodil which inspired him as he walked with his sister Dorothy on the shores of Ullswater in the Lake District.

The wild daffodil or Lent lily is indigenous to northern Europe and is thought to have been introduced to gardens by the Romans in 300 BC. It is described early on by the Greek

botanist and philosopher Theophrastus in his 'Enquiry into Plants'. The myth of Narcissus, which gives the plant its name, tells of a young and beautiful Greek youth rejecting the love of a nymph called Echo. Heartbroken, she lived alone until nothing was left of her but an echo. Nemesis, God of Revenge, lures Narcissus to a pool where admiring his reflection in its surface he leans over too far, falls in and drowns. His fate is to become a flower.

*Narcissus pseudonarcissus* is smaller than the horticultural varieties we are used to. Its petals are pale yellow, and it has a dark yellow trumpet like tube. Leaves are grey-green, thin and flattened. It is now a rare plant although in some areas it can be abundant, as in the 'golden triangle' around the villages of Newent and Dymock in Gloucestershire where there are colonies that have built up over

hundreds of years. In western parts of the UK patchy populations may still be found, but numbers have declined although no real reason has been pinned down, picking by walkers passing-by not being considered significant.

There are a number of species and subspecies of this *Narcissus*, notably the Welsh Tenby *N. obvalaris*. Also well-known is 'Pheasant's Eye' which has nearly white petals and no trumpet but a central cup of gold and red which explains its name. *N. poeticus* var. *recurvus* (Old Pheasant's Eye) is highly scented and late flowering and grows well in grass. It is my absolute favourite.

But we should celebrate all daffodils/narcissi/jonquils in spring as Wordsworth did when he wrote, 'And then my heart with pleasure fills, / And dances with the daffodils'



Judy Kinloch

## Was the taxi empty?

I enjoyed reading Robert Dyson's article about his legal memories in the April 2021 magazine. It reminded me of at least one improbable tale my father Alan Hardwicke told. He was a solicitor specialising in criminal prosecution. He lived at Fairfield, Chapel Lane just above the station from 1948 and commuted to London until he retired. His firm handled shoplifting cases for Harrods. I well remember the phone ringing late in the afternoon on Saturdays. If I was the alone at home, I would have to take a note of the store detective's name, the accused name and the court and time that case was due to be heard. Marlborough Street Magistrates Court\*

was no problem for me. That was the usual one.

It always puzzled me that my father was able to turn up at the Court at 11 am on Monday morning and appear for the prosecution without any apparent preparation. I suppose he met up with the store detective shortly before the case was due to be heard and it all being pretty routine stuff and off he went.

His firm also acted for the London cab driver's association or union. Taxi drivers were not allowed to drive about with their meters showing they had a fare on board when they were in fact empty. One cabbie was stopped by the police for doing just that. But no, he had a fare

on board. He was taking the Chinese family ancestors to a funeral! The case went to court, but I cannot remember whether the cabbie got off. Barbara Jones

\* Some time ago a restaurant review *The Times Magazine* mentioned that Marlborough Street Magistrates Court is now a restaurant as is Bow Street Magistrates Court. Apparently, Giles Coren, the restaurant critic, has been up before the beak and eaten in both! If Pontifract Magistrates Court becomes a restaurant he could make it a hat trick!



### 2021 Poppy Appeal Report

The church contributed £166.50 towards a Mickleham total of £596.09. Westhumble's total was £693.21



## BRAIN TEASER

Can you translate this diagram into words? Say what you see.

CHA WHO RGE  
WHO

Answer on page 26

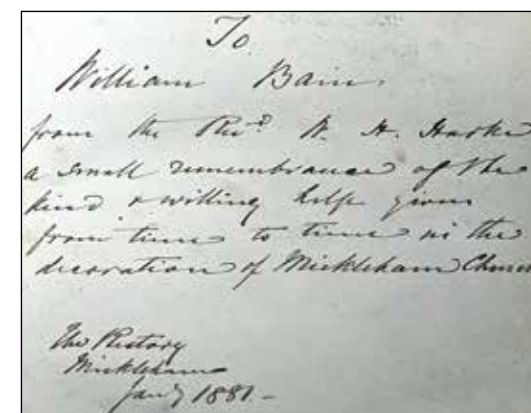
## Mickleham and Westhumble Local History Group William Bain's Bible

At the end of October, our Parish Administrator, Alison Wood, received an unusual email from the Gairloch Museum in the Highlands of Scotland. Someone had found a bible in the museum's collection with the following inscription, dated January 1881, from the Reverend W. H. Harke (Rector of Mickleham) to William Bain: 'a small remembrance of the kind and willing help given from time to time in the decoration of Mickleham Church'. The Bible had no obvious connection to Gairloch and the Museum wondered if it would be of interest to Mickleham.

Who was William Bain and how had he been involved with St Michael's? His name was unfamiliar to the Local History Group so it came as a surprise when the census returns between 1871 and 1911 informed us that he was a gardener, born about 1843 in Ross-shire, who had lived in Westhumble for at least 40 years. Conveniently, the 1911 census revealed that William lived at 4 Burford Cottages with his wife Esther and was born in Gairloch. This at least solved part of the mystery. Newspaper articles provided more information. In September 1893, the *Surrey Mirror* included a lengthy description of the Harvest Festival decorations in St Michael's Church where the name of Mr Bain of Burford Gardens was included in the list of people who decorated the church. There were numerous other references to his help with floral

decorations although we do not know if the date of 1881, when he received the bible, had any special significance. William was obviously a well-respected member of the community as he was elected to the Mickleham Parish Council on several occasions between 1894 and 1910.

For many years, William Bain's name appeared in newspaper reports of local horticultural shows, both as a judge and an exhibitor. More importantly he was described as head gardener to Sir Trevor Lawrence who lived at Burford Lodge. Sir Trevor was a keen horticulturalist with a particular interest in orchids and the Burford Lodge gardens were renowned throughout the country. William must have been especially proud of his position when Sir Trevor was elected president of the Royal Horticultural Society in 1885, an office he held for 28 years. After Sir Trevor died in December 1913 William remained at Burford as gardener to Lady Lawrence until her death in March 1916. When he retired six months later *The Dorking and Leatherhead Advertiser* noted that William had been the head gardener at Burford for more than 47 years. He was presented with a cheque by Sir William Lawrence, who had succeeded to the Burford Estate, and received a gold watch from Sir William's three siblings.



William Bain's wife had died in 1915 and as the couple had no children he moved back to Lechnasaide, South Gairloch to live with his nephew, William Morrison.

William died on 2<sup>nd</sup> February 1922 and his obituary in *The Gardeners' Chronicle* described the garden at Burford Lodge as 'not only full of interesting plants, but charmingly designed, and under Mr Bain's care maintained in great perfection'. Aubrey Lawrence, one of Sir Trevor's sons, referred to William as a devoted friend of the Lawrence family and noted that 'he was laid to rest in his mother's grave in one of the most beautiful spots in Gairloch'.

We are pleased to report that William Bain's bible will remain in the Gairloch Museum, where it obviously belongs, and the curator has asked one of her volunteers to see if she can track down any of William's descendants.

Judith Long



William Bain 1872 – 1922



Early 20<sup>th</sup> century postcard featuring Burford Lodge



## A Confidential & Safe Space to Talk

Counselling • Mind & Body Healing  
Reiki • Relax into Nature Sessions  
Face to face/Online/Outdoors/Distance

Supporting you with compassion and understanding through challenging times



Call Judith Cobby  
on 01306 882229  
or 07790 614448

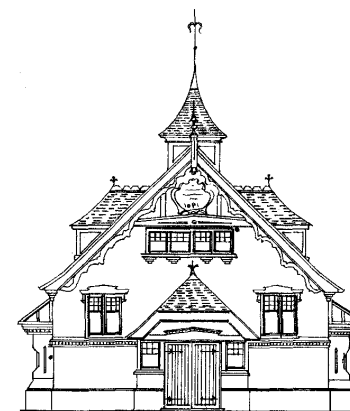
[www.healing-inspiration.co.uk](http://www.healing-inspiration.co.uk)

## TIM LANGLEY

*Experienced craftsman*

ANTIQUE RESTORATION  
CABINET MAKING  
FRENCH POLISHING

Free estimates collection & delivery  
01372 457700 07960 486455



## Mickleham Village Hall available for hire

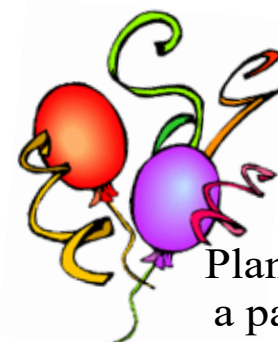
Hall bookings  
Table & chair hire

Deanna Darnell

07790 941 601

[bookings@micklehamvh.co.uk](mailto:bookings@micklehamvh.co.uk)

[www.micklehamvillagehall.org.uk](http://www.micklehamvillagehall.org.uk)



Planning a party?

Equipment available for hire

China ~ Cutlery

Electric urn

Equipment hire  
Mary Banfield

01372 373912

[admin@micklehamvh.co.uk](mailto:admin@micklehamvh.co.uk)

## Community Directory

BOX HILL AND HEADLEY HEATH (National Trust)

Lead Ranger – Mark Dawson

01306 885502

[mark.dawson@nationaltrust.org.uk](mailto:mark.dawson@nationaltrust.org.uk)

Friends of Box Hill – Chair Lyn Richards

01737 842889

[lyn@mra.uk.net](mailto:lyn@mra.uk.net)

BOX HILL SCHOOL

Headmaster – Cory Lowde

01372 374814

[HMPA@boxhillschool.com](mailto:HMPA@boxhillschool.com)

DORKING CRICKET CLUB

Chairman – Andrew Homewood

[homewooda@hotmail.co.uk](mailto:homewooda@hotmail.co.uk)

DORKING GROUP OF ARTISTS

Exhibition Secretary – Patricia Booth

01737 24491

[patriciabooth100@gmail.com](mailto:patriciabooth100@gmail.com)

DORKING LAWN TENNIS & SQUASH CLUB

Jim Cattermole

01306 883629

[jim.cattermole@uwclub.net](mailto:jim.cattermole@uwclub.net)

DORKING RUGBY CLUB

Jim Evans

07789 176417

[jim@flintcottage.net](mailto:jim@flintcottage.net)

THE GARDEN SHED

Pauline Davis

07759 646353

[paulinemdavis@gmail.com](mailto:paulinemdavis@gmail.com)

Susie Gowenlock

07768 923088

[susiegowenlock@gmail.com](mailto:susiegowenlock@gmail.com)

JUNIPER HALL FIELD CENTRE

01306 734501

[enquiries.jh@field-studies-council.org](mailto:enquiries.jh@field-studies-council.org)

Head of Centre – Maddy Jones

[m.jones@field-studies-council.org](mailto:m.jones@field-studies-council.org)

Friends of Juniper Hall – Suzy Hughes

01483 281935

[suzy@suzyhughes.co.uk](mailto:suzy@suzyhughes.co.uk)

MICKLEHAM CHILDREN'S PLAYGROUND ASSOCIATION

Secretary – Sarah Parfitt

07767 891772

[sarah@sarahparfitt.com](mailto:sarah@sarahparfitt.com)

MICKLEHAM CHORAL SOCIETY

THURSDAYS 8 - 10 pm – MICKLEHAM VILLAGE HALL

01372 373106

Conductor – Juliet Hornby

01306 883932

Secretary – Anne Weaver

[www.micklehamchoral.org.uk](http://www.micklehamchoral.org.uk)

[secretary@micklehamchoral.org.uk](mailto:secretary@micklehamchoral.org.uk)

MICKLEHAM OLD BOX HILLIANS FOOTBALL CLUB

Secretary – John Atewell

01372 374745

MICKLEHAM PARISH COUNCIL

SEE WEBSITE FOR MEETING DATES

[www.micklehampc.org.uk](http://www.micklehampc.org.uk)

Chairman – Rev'd David Ireland

01372 379381

[rev.ireland43@btinternet.com](mailto:rev.ireland43@btinternet.com)

Parish Clerk – Feena Graham

[clerkatmpc@gmail.com](mailto:clerkatmpc@gmail.com)

MICKLEHAM PARISH MAGAZINE

Editor – Sue Tatham

01306 882547

[editor@micklehammag.co.uk](mailto:editor@micklehammag.co.uk)

Co-Editor – Charlotte Daruwalla

01306 884025

[editor@micklehammag.co.uk](mailto:editor@micklehammag.co.uk)

Administrator – Vacant

MICKLEHAM VILLAGE HALL

Chairman – Ben Tatham

01306 882547

[chairman@micklehamvh.co.uk](mailto:chairman@micklehamvh.co.uk)

Bookings Manager – Deanna Darnell

07790 941601

[bookings@micklehamvh.co.uk](mailto:bookings@micklehamvh.co.uk)

## Ballroom Dancing Latin American Dancing Professional Training [IDTA]

Private lessons on  
Tuesday afternoons and  
Sunday evenings

At Mickleham Village Hall  
Dell Close Mickleham Surrey RH5 6EE  
07748 867 732

[vmvdancing@gmail.com](mailto:vmvdancing@gmail.com)



IDTA Qualified Teacher

## Rowlatt Garden Services

# RGS

EST.1985

*Gardens large and small  
we maintain them all*

All aspects of private and commercial garden  
and estate maintenance landscaping undertaken  
Fencing grass & hedge cutting

Telephone: 01737 841524 Mobile: 07887 838666

References available upon request



Joseph

## De Decorators

• Painting • Decorating • Wallpapering •  
Plastering • Tiling

Mickleham based 40 years' experience  
01372 372331 07973 358 932



Regular Lawn Mowing  
Lawn Care & turfing  
Pressure Washing  
Hedge Trimming

General Garden Maintenance

[phil@philsmowingdorking.co.uk](mailto:phil@philsmowingdorking.co.uk)

07905 160765



## KING WILLIAM IV

Goodbye 2021. The King Will sailed through more turbulent waters and came out the other side. We were strongly supported by the village and many new neighbours, which we really appreciated. Hope we continue to see you all in 2022

To thank the staff for their super support we treated them to the Hard Rock Cafe and *Phantom of the Opera* - copious amounts of cocktails were consumed. Best pub team in Surrey – thanks guys.

Anne and I are on a coach in the Gambia as I write taking a couple of weeks of chill before reopening  
See you soon, Eamonn and Anne

Byttom Hill Mickleham 01372 372590 [www.thekingwilliamiv.com](http://www.thekingwilliamiv.com)



## ST MICHAEL'S CHURCH

*within the United Benefice  
of Leatherhead and Mickleham*

INCUMBENT – VACANT

PARISH PRIEST

The Rev Dr Sandra Faccini 01372 417664  
parishpriest@micklehamchurch.org.uk

CHURCHWARDENS

Sarah Blake 07736 235709  
SarahJB1@outlook.com

Timothy Mathieson 07555 597163  
TimothyMathieson@aol.com

PARISH ADMINISTRATOR

Alison Wood 01372 376443  
admin@micklehamchurch.org.uk

PCC SECRETARY

Elizabeth Moughton 01306 883040  
pccsecretary@micklehamchurch.org.uk

TREASURER

Richard Siberry 01372 375303  
pcctreasurer@micklehamchurch.org.uk

ORGANIST

David Fishwick 0208 773 2420  
organist@micklehamchurch.org.uk

WEDDINGS CO-ORDINATOR

Elaine Machin 01372 724972  
weddings@micklehamchurch.org.uk

BAPTISMS CO-ORDINATOR

Vickie Leney 01306 884054  
baptisms@micklehamchurch.org.uk

FUNERALS ORGANISER

Brian Wilcox 01372 374730  
dbrianwilcox@btinternet.com

WEBSITE MANAGER

Sarah Ward 01372 383350  
website@micklehamchurch.org.uk

[www.micklehamchurch.org.uk](http://www.micklehamchurch.org.uk)

*For information about services for other  
denominations see website pages.  
Search on 'Churches Together Mole Valley'*

## REGISTERS

MARRIAGE BLESSING

9<sup>th</sup> December Stephanie Hill and  
Marc Broughton

FUNERAL AND BURIAL IN CHURCHYARD

14<sup>th</sup> December Jacqueline Ann Cox

## CALENDAR

### FEBRUARY

5 Saturday 10 am Coffee Morning at the Westhumble Chapel

6 SUNDAY – Fourth before Lent

10 am Family Service

*Copy deadline for FebrSdruary magazine*

7 Monday 7.30 pm Advent Course at Garden Corner

8 Tuesday 7.30 pm - 8.30 pm Prayer Meeting in Church

13 SUNDAY – Third before Lent

10 am

11.30 am

Holy Communion

Matins at Westhumble Chapel

Valentines Moon Walk

Local History Group's AGM. Village hall

Women's Breakfast at the Stepping Stones

14 Monday

18 Friday

19 Saturday

7.30 for 8 pm

9 am

20 SUNDAY – Second before Lent

8 am

10 am

Holy Communion in church

Holy Communion

Men's Breakfast at the Stepping Stones

26 Saturday

27 SUNDAY BEFORE LENT

8 am

10 am

10 am

3.30 pm

Holy Communion at the Westhumble Chapel

Holy Communion

Fruit Tree Pruning Workshop at Chapel Farm

Messy Church in the village hall

## MARCH

1 Tuesday 7.30 pm - 8.30 pm

2 ASH WEDNESDAY 7.30 pm

Prayer Meeting in Church

Ash Wednesday Service with Holy Communion

All welcome



## MEMBERS OF THE PAROCHIAL CHURCH COUNCIL

Sarah Blake Mark Day Andrew Diamond  
Caroline Jones Vicky Leney Elaine Machin  
Timothy Mathieson Elizabeth Moughton  
Frances Presley Richard Siberry  
Amanda Wadsworth Amy Ward

## ST MICHAEL'S COMMUNITY GROUP COMMITTEE

Mary Banfield 01372 373912  
mgbbmw@aol.com  
Kay Cain 07736281752  
kay\_jay@hotmail.co.uk  
Mark Day 07852 117249  
mickleham@hotmail.com  
Will Dennis 07903 842674  
wdwdennis@icloud.com  
Andy Diamond 07789 775354  
diamo1@hotmail.co.uk  
Tim Mathieson 07555 597163  
TimothyMathieson@aol.com  
Frances Presley 01306 882473  
jasempres@gmail.com  
Amy Ward 07709 199292  
amycatrionaward@gmail.com

## ST MICHAEL'S COMMUNITY GROUP HELPING HANDS

INCLUDING FOOD FOR FRIENDS

*A service for all residents  
of Mickleham and Westhumble*

Examples of services we offer:

- Essential shopping / collection of prescriptions
- Changing library books
- Small tasks: eg changing fuses, altering clocks etc
- Dog walking
- Visiting / befriending
- Home-cooked meals for local families going through difficult times

Requests to

Frances Presley 01306 882473

*More helpers needed – please contact  
Frances if you can spare some time.*



# Community Directory

Continued from page 13

MICKLEHAM & WESTHUMBLE BADMINTON CLUB  
Membership Secretary Sarah Blake tinkerbell0044@hotmail.com

MICKLEHAM & WESTHUMBLE CRICKET CLUB  
Membership contact Will Dennis 07903 842674  
will@micklehamhallfarm.co.uk

MICKLEHAM & WESTHUMBLE HORTICULTURAL SOCIETY  
Chairman – David Kennington 01372 362309  
www.surreycommunity.info/mwhs davidkennington144@gmail.com

MICKLEHAM AND WESTHUMBLE LOCAL HISTORY GROUP  
Chairman – Ben Tatham 01306 882547  
ben@thetathamss.co.uk  
www.micklehamwesthumblehistory.co.uk/community/mickleham-  
westhumble-local-history-group-13483/home/

MOLE VALLEY DISTRICT COUNCIL 01306 885001  
Councillor Elsie Rosam 01306 885695  
elsierosam29@gmail.com

THE ARTS SOCIETIES (FORMERLY NADFAS)  
Betchworth – Mary Venning 01306 883301  
Dorking – Sue Tatham 01306 882547  
Leatherhead – Sarah Sheridan 01306 883699

ST MICHAEL'S CHURCH OF ENGLAND (A) INFANT SCHOOL 01372 373717  
info@stmichaels-dorking.surrey.sch.uk  
Friends of St Michael's School – Chair Amy Rieley  
friendsofstmichaels2017@gmail.com

ST MICHAEL'S COMMUNITY NURSERY  
WEEKDAY MORNINGS – MICKLEHAM VILLAGE HALL  
Supervisor – Hilary Budd 01372 361021  
stmichaelsnursery@btinternet.com

SURREY COUNTY COUNCIL 03456 009 009  
Councillor – Hazel Watson 01306 880120  
hva.watson@btinternet.com

SURREY WILDLIFE TRUST 01483 795440  
info@surreywt.org.uk

WESTHUMBLE RESIDENTS ASSOCIATION  
David Allbeury 07860 227451  
westhumble.neighbourhood.watch@gmail.com

WESTHUMBLE NEIGHBOURHOOD WATCH  
Lead Co-ordinator – David Allbeury 07860 227451  
westhumble.neighbourhood.watch@gmail.com

## ADDITIONAL CONTACT INFORMATION

CITIZENS ADVICE  
Dorking – Lyons Court 01306 732302  
Leatherhead – Swan Mews High Street 01306 732301  
CRIMESTOPPERS 0800 555 111  
POLICE Non-emergencies 101

(often quicker to make online report) <https://report.police.uk/>

Neighbourhood Specialist Team – Dorking Rural East

General enquiries molevalley@surrey.pnn.police.uk

NHS Urgent and emergency care 111

## Babysitting by local youngsters

Those listed below are at least  
14 years old.

Annabelle Prosser\* 07443 634179  
Maisy Presley\* 07720 657327  
Martha Pearce 07514 080005  
Rory Lee \*\* 07973 360 950  
Ellie Kim 07773 395 575  
Chelsea Edwards 07834 695816  
Edward Moran 07740 088124

\* Holidays only  
\*\* Parent's mobile number

If you would like to add your  
name to this list please get in  
touch with Sue Tatham

01306 882547  
editor@micklehammag.co.uk  
No Charge

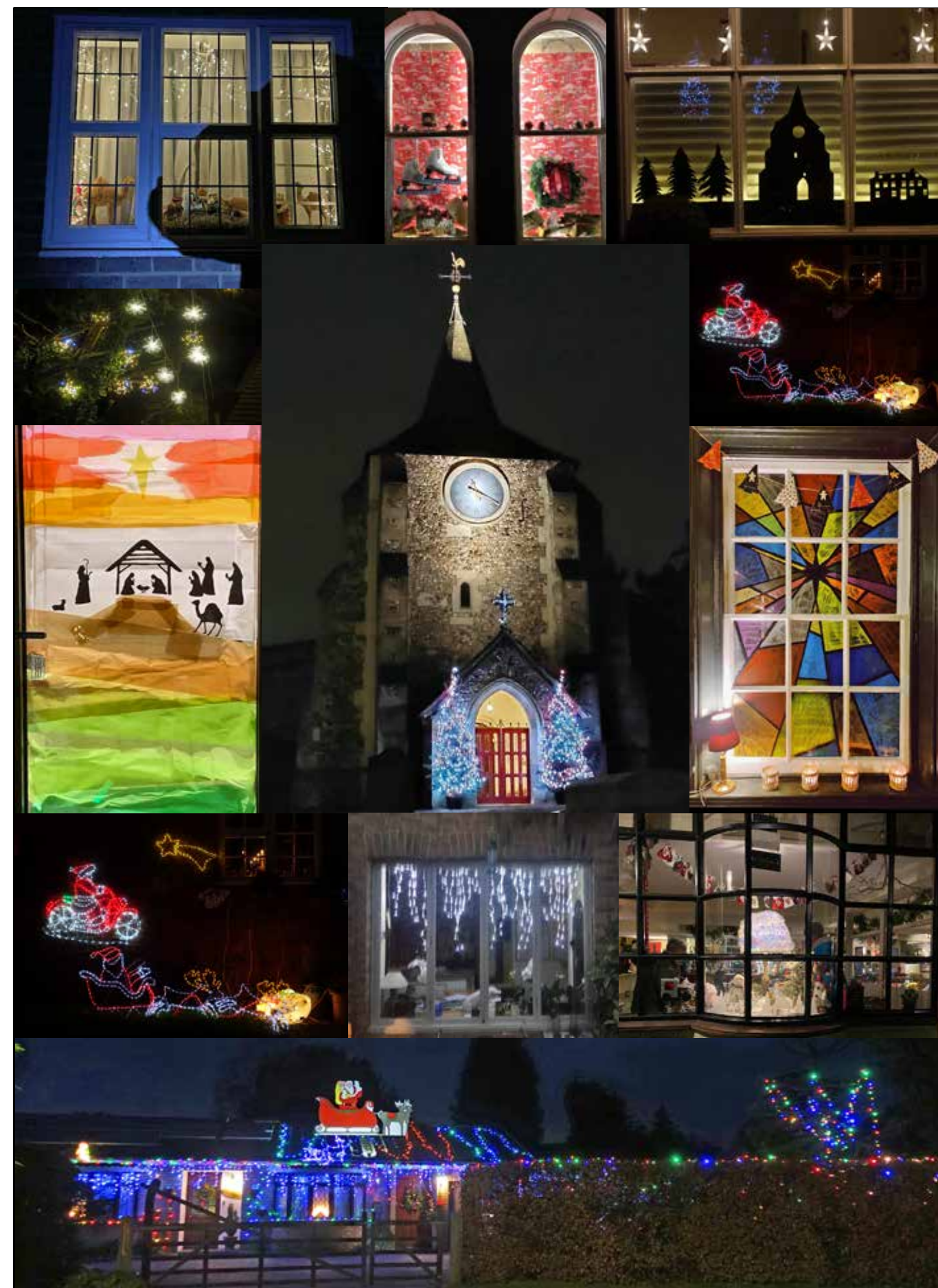
## Advertising in the Parish Magazine

Please contact  
Sue Tatham (as above)  
Small ads: a nominal fee is  
charged for ads where items or  
services are bought or sold.

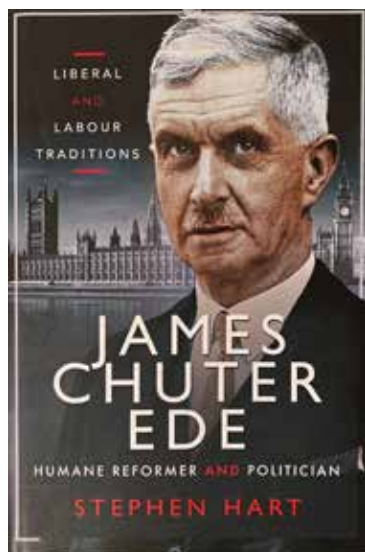
We have been advised to print  
the following reminder:  
*We cannot guarantee the  
quality of the goods and  
services offered by our  
advertisers.*



## Advent Windows and Lights







## Mickleham & Westhumble Local History Group AGM Friday 18<sup>th</sup> February 2022

7.30 for 8 pm Mickleham Village Hall

followed by

*James Chuter Ede*

A talk by Stephen Hart

All welcome. £3 for non-members

For further information please contact Judith Long

judith.long2@btinternet.com or 07904 160961

Last September I received an email from Kate Ashbrook, General Secretary of the Open Spaces Society, reminding me that the 75th anniversary of the reopening of the stepping stones over the Mole, by the Prime Minister Clement Attlee was on 11th September. She added 'our executive committee member, James Chuter Ede, paid for them to be replaced after they were damaged in the war'. In return I sent her an account of the event from our archives. Kate forwarded my reply to Stephen Hart who had recently written a biography of James Chuter Ede who offered to come and tell us about him.

Chuter Ede attended Dorking High School for Boys and won a scholarship to Cambridge. He was an MP and in WW2 was second-in-command to R A Butler in the Education Department and played an important role in the preparation of the 1944 Education Act. He went on to be Home Secretary in the Attlee government from 1945 to 1951 which was responsible for many important pieces of legislation.

Before the war Chuter Ede was also a member of Surrey County Council. During this time he was involved in the acquisition of Norbury Park by the County Council and promoting the construction of by-passes for

various Surrey towns. He was a very keen walker – hence his involvement in the Open Spaces Society and the reinstatement of the Stepping Stones.

The re-opening of the Stepping Stones was followed by a dinner at the Railway Arms pub – now the Stepping Stones. After the dinner Clement Attlee gave a speech in which he recalled that his father was born in Dorking.

Please come and hear James Chuter Ede's biographer, Stephen Hart, talk about this distinguished man with his many local connections.

Ben Tatham  
M&WLHG Chairman

## Community News

Congratulations and best wishes to Sarah Blake and Kelvin Pritchard who announced their engagement on New Year's Day.

Congratulations to Stewart and Lyn MacLean of Adlers Lane on the arrival of their grandson, Freddy, born on 29<sup>th</sup> November. Son of Oliver and Jessy MacLean, who live in Henley. Oliver grew up in Westhumble.

Farewell to Rob and Jo Slade who have moved from Adlers Lane to Fetcham.



## December Moonwalk Leopard slugs and puff balls

On Saturday, 17 December, a group of intrepid walkers headed up towards the Mickleham Downs led by an enthusiastic undergraduate student from the University of Exeter. What was different about this was that it was during the night.

Despite the initial climb of 100m, we were focused less on breathlessness and more on any tiny rustle in the undergrowth indicating a little creature disturbed on its usual nocturnal ramble. Touch and hearing become so much more important on a night walk. The ground beneath our feet became so noticeable – each knobbly flint seemed even more so - branches loomed out of nowhere and every little sound was amplified. It all made us smile though as we were sharing it with our friends and family.

The real stars in a night-time walk are the trees that are revealed in torchlight as weird and wonderful shapes, their shadows reached up into darkness, while in crevices we found their silent 8-legged inhabitants weaving intricate webs or noticed spotted leopard slugs (google them and you will see they are a gardener's friend) inching their way along leaving a glistening trail.

The youngest member of the group, a 5-year-old, and was as transfixed as the rest of us by the cloud of spores released into our torchlight as the lightest touch was given to a puffball fungus.

Returning to a starlit café at the village hall, we chose from homemade treats including hot chocolate with cream and marshmallow, owl cupcakes and generous hunks of warming ginger



Moonwalk photos of an ant hill and a spider

cake. All could eat as allergies were well catered for. We bade each other farewell, pleasantly tired but smiling after a fun and refreshing night out.

If you are intrigued, book a place on our Valentine's Night Walk in the Woods on Monday, 14<sup>th</sup> February.

Francesca Simpson

Vivien Cresswell  
Made-to-measure Soft Furnishings

Curtains Roman Blinds Cushions



Extensive range  
of fabrics

01737 843858

info@cresswellscurtains.co.uk

www.vivienecresswell.co.uk

Mike Palmer  
Electrical Services

Part P registered electrician



From additional lighting and sockets  
to complete rewires

Fully insured Registered with the NICEIC

07866 930483 mike@mikepalmer.biz

Boxhill Way, Strood Green, Betchworth RH3 7HY





**M**y mobile has died. I will not go into the details; you will pick them up sooner or later.

I got on to the appropriate website and found a number to ring. I rang the number and was directed back to the website for a 'live chat' with 'one of our representatives who will be happy to help!' Well...

Step 1: communicate with a robot called TOBi who asked me the nature of my enquiry but did not understand what I needed. What a surprise.

Step 2: get passed on to an advisor who asked me how she could help. I explained that my phone had died. Despite being fully charged it would not switch on. This had been an intermittent fault but this morning I hadn't been able to switch it on at all. 'Can you give me your number?' Of course, I could. 'I've sent an access code to your phone, please would you read it and tell me what it is.' Er...NO... my phone won't

*switch on, as I told you, so the screen is blank and therefore I can't read your text...* Oh, well I'll need to ask you some security questions.'...What is your number? *I've just told you, but here it is again.* What is your name... what is your alternative phone number... when did you last go into a \*\*\*\*\*phone shop and for what purpose...when did your contract start, just the month and year will be sufficient...how much was your last bill and what was the date...what are the last 2 numbers of your sort code... how many teeth do you have... what colour are your eyes? (Maybe not the last two, but it felt like it.) Thank you, now please will you explain what is the problem (at this point I was losing the will to live but I persevered!) I need to pass you on to a member of our technical team, please wait and do not end this chat.

Third step: Hello. How can I help? *My phone has died, I can not switch it on.* OK, I need to ask you a few questions and I have sent you a security access code. What is the nature of the problem... I can see your phone is fully charged but not switched on (*bright spark, obviously knew a thing or two about switching things off and on again.*) What is the make and serial number of your phone? *I can't remember but give me a few minutes and I can get the box and read it out to*

## How to get a new phone

*you.* No that won't be necessary, I can see it here. Your phone has a fault, you will need me to do some repairs. Your phone is out of warranty, you will be charged for this service. *Would it not be easier to send me a new phone?* I will need to pass you onto a member of our customer service and sales team. Please do not end this chat and if you have not heard from anyone within eight minutes please type something into the chat box otherwise you will be automatically disconnected.

Step 4: Hello, my name is Ben, how can I help? *As I have explained, my phone switches itself off and I can't always get it to switch on again.* OK let me have a look at your chat history to save you repeating yourself (At last, someone sensible!) I think you need a new phone. What did you have in mind? *I don't need anything posh, what would you recommend?* ...*Thank you so much, you have been really helpful.* It's been a pleasure talking to you, enjoy the rest of your day!

It would have been much easier to talk to someone in the shop but as a 'non-essential' retail outlet, it is not open yet. I'm going to lie down in a darkened room now with a cold compress on my head and remember the days of steam driven telephones, what bliss!

Anne Weaver  
Written during lockdown

## Cryptic Delicacies

I hope my seasonal offering provided some appropriate entertainment, themed as it was around WHITE CHRISTMAS, released by BING CROSBY in 1942 with the B-side including JINGLE BELLS and GOD REST YOU MERRY GENTLEMEN (he sang the YOU as YE, but with such a long anagram I spared you the confusion that would have caused). I also included various other seasonal words like STAMPEDE for CONSUMER GOODS, but some words are in there because fitting in theme words then limits what other words can fit into the remaining spaces, and I want to make it absolutely clear that my Christmas does not involved SPRAYING BILLBOARDS with EDAM and TOFU. Nor is it spent DESIRING a SNOG with GEORGE EASTMAN – so please no gifts along those lines for me when the festivities inevitably engulf us again later this year.

In my previous articles I picked out some particularly difficult clues (usually after frustrated harumphs from some key core solvers), but have now realised that this might have led to some readers thinking 'well, those are impossible' and giving up all attempts to even start solving my puzzles. *So for the New Year, I am going to start with a variety of the less tricky clues in the hope that it provides some encouragement.* The definition part of each clue is underlined:

**28/27 Well-known single wretch aims this in revolt (5,9)**

**WHITE CHRISTMAS**

You would naturally read the first four words as one thing, but you need to break up clues and try to ignore the surface reading. Here the key words are 'in revolt' which point to an anagram of WRETCH AIMS THIS.

**16 Pantomime dame hides a savoury item in red wrapping (4)**

**EDAM**

'Hides' tells you that there is a hidden word in 'pantomimE DAME'.

**12 Vegan fare leads to toilet overflow fouling up (4)**

**TOFU**

Here 'leads to' means that you take the first letters to 'Toilet Overflow Fouling Up'.

**7 Catch on to a sign that you're ready for Christmas lunch (6)**

**RUMBLE**

This is a double definition, so each half of the clue is a definition with the only crypticness being in the way the definitions are expressed. So RUMBLE is both 'catch on to' (as in 'rumble a criminal's plans') and 'what your stomach does when you're ready for food'.

**11 International award given for 'The Sound of Chronic Tiredness' (4)**

**EMMY**

'Chronic Tiredness' is M.E. (short for 'myalgic encephalopathy') with 'sound of' meaning that you're looking for a homophone and thus giving the US TV award.

**19 Regularly throw out forgeries for monstrous villain (4)**

**OGRE**

'Regularly throw out' means to get rid of alternate letters in 'forgeries' so that you retain OGRE.

**23 Part of the fun of advent calendars is the final one revealing someone who hates parties (5)**

**LONER**

'part of' points to a hidden word which is in 'finaLONE Revealing' (other words



are left in there to help with the hiding).

**3 Eric's little partner goes around entrance to auditorium to be paid (4)**

**EARN**

Eric Morecambe's partner was Ernie Wise. He was physically little but here 'little' implies a shortening of his name to ERN, and that is then placed around the 'entrance' (i.e. the first letter) of 'Auditorium'.

**18 Give order to sedate PM with out-of-control career (8)**

**STAMPEDE**

'Give order to' points to an anagram of SEDATE PM.

**26 Two women's institutes formed up for a short war (4)**

**WWII**

'Two women's institutes' = WI & WI, 'formed up' means you anagram those to get short way of writing World War Two.

**5 Scrooge mounds up all sorts of things bought to show the true spirit of Christmas (8,5)**

**CONSUMER GOODS**

'up' is doing a lot of work here. It is being used as in 'something's up' where something strange is happening to anagram SCROOGE MOUNDS.

There are a lot of words that can be used as pointers to anagrams. One trick is to look for words with the number of letters that fit the clue and then look for other words that might point to them being anagrammed.

I hope this helps. It would be great to get any feedback via **andrewt@andrewtatham.co.uk**

Andrew



## Leith Hill Music Festival Update

**T**here are changes afoot with LHMF. First of all, it has changed its name from 'Musical Festival' to 'Music Festival' to clarify that it includes all music, and not just musicals. Because of the uncertainty related to the emergence of the Omicron variant the massed festival choirs' performance of Handel's 'Messiah' has been postponed to Sunday 19th June. However, all being well, the festival itself will go ahead over two rather than three days. On Friday 8th April Beethoven's expressive 'Mass in C' will be contrasted with the energy

and colour of Festival Conductor Jonathan Willcocks's own work 'The Song of Mary'; while on Saturday 9th April the music is high-octane with Bob Chilcott's 'A little Jazz Mass', your favourite songs from Gershwin's – 'Porgy and Bess' and a rousing finale in John Rutter's 'Feel the Spirit'. Both concerts also feature the professional chamber orchestra Southern Pro Musica and professional soloists including internationally acclaimed music-theatre star Melanie Marshall. Mickleham Choral Society will be participating on Saturday 9th April.



## Work, work, work

**T**he 1921 census records have just been released. Although the first British census dates from 1801, it was only in 1881 that residents were asked to furnish their rank, profession or occupation. Here are some of the more puzzling responses preserved by the London Genealogical Society:

- Knight of the Thimble
- Disinfectant of railways
- Examiner of underclothing
- Invisible net maker
- Emasculator
- Proprietor of midgets
- Knocker-up of workpeople

- Fatuous pauper
- Cow-banger
- Turnip shepherd
- Drowner
- Random waller
- Sampler of drugs
- Fifty-two years an imbecile



**Do you need a plasterer?**

Over 25 years' experience working on extensions, renovations, new-build and conversion projects for builders and domestic customers alike.

 Our work is to a high standard and we are fast. Give Chris a call for a free, no obligation quotation.

**CHRIS C GUY  
PLASTERING LTD**

ALL ASPECTS OF INTERNAL & EXTERNAL PLASTERING  
07740 860560 [chrisguyplastering@gmail.com](mailto:chrisguyplastering@gmail.com)

**Julie Watts  
Family Law** 

AN AFFORDABLE AND EXPERIENCED PROFESSIONAL  
ALTERNATIVE TO TRADITIONAL SOLICITORS

- Divorce • Arrangements for children • Finances
- Court Proceedings

PROUD TO PROVIDE A DIFFERENT KIND OF SERVICE

- Affordable fees • Straight-talking advice
- Practical real support

Contact me for a consultation  
07808 572157 [juliewattsfamilylaw.co.uk](http://juliewattsfamilylaw.co.uk)

**Domestic Appliance Repairs**

30 years' experience repairing and installing all gas and electric domestic appliances



- Cookers Microwaves
- Dishwashers
- Washing machines
- Fridges / Freezers
- Water coolers
- Coffee machines
- Tumble dryers

Contact: Andy 07895 719706  
[andy@kirksdomestics.co.uk](mailto:andy@kirksdomestics.co.uk)



**Dorking Pest Control Services**

Local Authority Approved Contractors

 Our Services include: Wasps Bee Swarms Hornets Rats Mice  
Squirrels Fleas Flies Ants Cockroaches Bed Bugs  
Rabbits Moles Foxes and Deer 

• Domestic Commercial and Industrial • Contract Work • Preventative Control Programmes

Experts in pest control throughout Surrey

Office: 01306 743001 Ivor: 07710 117491 Chris: 07971 519415

[www.dorkingpestcontrol.com](http://www.dorkingpestcontrol.com)

07871 051661 / 01372 458616  
[timskerittgroundworks.co.uk](http://timskerittgroundworks.co.uk) **TimSkerritt**  
LANDSCAPE & GROUNDWORKS

Turn your vision into a reality

Tim Skerritt Landscape & Groundworks offers a comprehensive range of services to both commercial and domestic clients across Surrey.

From hard landscaping to extensive site excavations, we offer a high quality, honest, reliable and competitively priced service, guaranteed to meet all your needs. Contact us today to find out more.

We provide the best possible care for your feet

Book your appointment:  
01372 454583

 **Bookham  
Chiropody & Podiatry Clinic**  
Diagnosis, Expert Treatment & Professional Care for Your Feet

29 High Street, Great Bookham KT23 4AA  
[www.bookhamchiropody-podiatry.co.uk](http://www.bookhamchiropody-podiatry.co.uk)

 **PAINTING  
DECORATING**

ANDREW CLARK 07800 796 737

INTERIOR & EXTERIOR • CARPENTRY • HANDYMAN

 **Mickleham Choral Society  
Christmas Carol Party**

We were triply indebted to the Mickleham Choral Society during Christmas 2021. First, they provided us with a much-needed dose of seasonal normality after nearly two years of pandemic disruption: they brought us belatedly together once more to celebrate a traditional village event. Second, they pulled off this concert with an under-strength choir and on the back of only four rehearsals, a notable feat in its own right. And third, it was a concert carefully planned to minimise any risks of the spread of infection. Many thanks to all those who contributed to making this significant – even therapeutic – concert possible.

The concert got underway with the choir giving a subtle rendering of *Illa Lucem*. This was followed by *The First Noel*, during which the choir was boosted by an audience restricted in number but not in enthusiasm. The choir then sang *Sing Lullaby* and *Count the Stars* before making way for Mike Benson, who gave the first of a trio of light and entertaining readings on Christmas themes; the second and third were given by Jilly Aarvold and the well-practiced double-act of Tracy and David Kennington respectively. *I saw Three Ships* invited audience participation before the choir sang both *Candlelight Carol* and *Suo Gan*.

*O Little Town of Bethlehem* again found the audience in full voice. This was followed by *\*A Cry In The Night*, where the choir was joined by the delightful 14-year-old soprano Gracie Osborne Taylor, one of Juliet's pupils. The choir then sang *Carol of the Bells* and *Alleluia, Alleluia*. The tempo was notably increased with the choir's exuberant rendering of *Rockin' Around The Christmas Tree* prior to their version of *It's The Most Wonderful Time*. The finale appropriately combined choir and audience once more, this time with *White Christmas*.

The community's special thanks go to Juliet Hornby, the Musical Director of the Mickleham Choral Society, to piano/accompanist Judith Flint, soloist Gracie Osborne Taylor, flautist Helen Birchmore, who augmented the choir's performance with her playing, and all those who worked in the background to make the event a charming interlude to conclude a less than charming year in many people's lives. Bravo the Mickleham Choral Society!

Graham Scambler

*\*A Cry In The Night* was commissioned by St Paul's Cathedral during the homelessness crisis about 50 years ago. The soloist then was chorister Martin Cox.

**Wordsearch  
Puzzle**

Can you find the names of 18 local places hidden in the grid below? they may be horizontal, vertical, or diagonal and they may run forwards or backwards

R	E	I	G	A	T	E	O	L	D	E	S	Y	E	U
N	K	D	Q	M	A	H	E	L	K	C	I	M	B	E
L	L	W	V	B	T	D	I	K	M	Q	F	R	L	K
D	R	G	U	I	L	D	F	O	R	D	U	B	M	W
P	R	Y	L	L	I	W	G	N	I	K	M	U	D	L
I	L	L	A	H	R	E	P	I	N	U	J	O	I	E
P	R	U	N	N	E	R	S	R	H	R	R	H	D	A
P	A	C	M	M	Y	E	E	T	F	K	C	H	O	T
B	U	Q	Z	K	R	D	S	E	I	H	Y	O	S	H
R	X	T	A	O	H	E	K	N	L	L	S	J	E	E
O	Z	S	M	I	W	J	G	Z	E	N	E	I	I	R
O	Z	N	L	B	G	B	O	X	H	I	L	L	B	H
K	A	L	R	I	V	E	R	M	O	L	E	Z	N	E
R	K	R	A	P	Y	R	U	B	R	O	N	X	E	A
R	O	S	E	S	S	T	O	R	E	S	M	T	D	D

**Wordsearch  
Puzzle**

Can you find the names of 18 local places hidden in the grid below? they may be horizontal, vertical, or diagonal and they may run forwards or backwards

BOXHILL	PIPPBROOK
DENBIES	RANMORE
DORKING	REDHILL
GUILDFORD	REIGATE
JUNIPERHALL	RIVERMOLE
KINGWILLY	ROSESSTORES
LEATHERHEAD	RUNNERS
MICKLEHAM	RYKAS
NORBURY PARK	WESTHUMBLE

Devised by Richard Roberts-Miller



**10 Year**  
Manufacturer's  
warranty available  
with any new boiler  
Oil, LPG and Gas Registered • Consult • Design • Install • Maintain

**SEENERGY**  
INNOVATIVE ENERGY SOLUTIONS

Call for a free quote on  
**01306 735499**  
[www.seenergy.co.uk](http://www.seenergy.co.uk)  
[enquiries@seenergy.co.uk](mailto:enquiries@seenergy.co.uk)

EMERGENCY  
24  
HOUR  
SERVICE

Best Buy  
Which?  
Gas Boiler September 2018

**Get IT Fixed, Get IT Connected**  
Expert Repair & Maintenance




Brockham based. No call out charges. Fully transparent quotations with no hidden costs. We make technology work for you.

Call us now on **01737 845980** ChalkHill Systems  
[www.chalkhillsystems.co.uk](http://www.chalkhillsystems.co.uk)

**M & R BUTLER**

- GENERAL HOUSE MAINTENANCE
- EXTERNAL & INTERNAL DECORATING
- BESPOKE CARPENTRY
- LOCAL REFERENCES
- 40+ YEARS EXPERIENCE

07776256131 / 07896015771



**TONY WINCH**  
CARPENTER, JOINER  
& CABINET MAKER  
[www.tonywinch.com](http://www.tonywinch.com)  
**01306 742373**  
**07969 016 924**

**Building Plans**  
*For home improvements & extensions*  
Including planning & building regulations  
Fast efficient service at competitive rates

**MICHAEL LLOYD** CEng MICE  
For free consultation:  
Phone: 01483 205479 or 07958 791 402

**RWP**  
Extensions and alterations often require a  
Structural Engineer

**Robert Wynter & Partners Ltd**  
**01306 879875**  
Book House Vincent Lane  
Dorking RH4 3HW

**remedial roofing**  
*For people with roof issues and deficiencies*

- New roofs – slate & tiled roof specialists
- All roof repairs, moss removal & gutter clearance
- Flat roofs, traditional felt & GRP fibreglass
- New uPVC Fascia, soffit & guttering

Obtain an up-to-date report of remedial roofing on [www.checkatrade.com](http://www.checkatrade.com)

ALL WORK GUARANTEED  
Call us today for a FREE quotation on:  
01306 304736 | 07852 833802  
[info@remedialroofing.co.uk](mailto:info@remedialroofing.co.uk) [www.remedialroofing.co.uk](http://www.remedialroofing.co.uk)

Confederation of Roofing Contractors  
The Premier Roofing Trade  
Association in the UK  
All Members Offer  
Insurance  
Backed Guarantees

Cheekatrade.com  
SURREY  
TRADING  
STANDARDS  
APPROVED

## End of Term Activities

We had a busy December - seems so far away now - but we were delighted to be able to hold our Christmas Fair. The village hall doors wide open, lots of fresh air flow, Father Christmas in the woods and the option of refreshments outside all helped to keep the event as Covid-safe as possible. A week later with the burgeoning Omicron variant cases we would have undoubtedly made a different decision. Nonetheless, we were extremely grateful for those who were able to support our event, which rose just shy of £2,000 for the nursery funds.

It was also a little touch and go for our end of term nativity. Luckily the weather held and we were able to have the performance outside. It is always delightful to see the little ones as sheep and angels, the slightly older children taking on simple acting and speaking

parts. Memory making for their parents and grandparents! We also managed to fit in a visit to St Michael's Church to see the beautiful tree and the traditional nativity scene.

You may be interested to know how we spent the funds raised by the Parish Magazine Christmas Card. This year and in keeping with the eco-friendly Christmas card message, we decided to purchase a bare-rooted Christmas tree for every child. These were potted on into recycled pots and children decorated them before taking home. Hopefully many will survive and be brought back into houses next Christmas. Our Forest School children made decorations which I am sure will adorn their Christmas trees for years to come.

We were also invited to create 'table decorations' for the Christmas Day Lunch organised by The Meeting Room



(formerly PitStop). Decorating the trees provided us with an opportunity to talk to the nursery children about people who may be less fortunate. Sadly, the lunch had to be cancelled, but our trees were sold in church and the proceeds were added to the church's donation to The Meeting Room.

During the coming year, we will be thinking about keeping healthy, healthy food, learning about where our food comes from, oral hygiene and exercise.  
Hilary Budd







## Mickleham Village Hall Dell Close

Weekdays 9.15 am - 12.15 pm (term time)

### WITH OPTIONAL LUNCH CLUB

On Mondays and Thursdays there is the option for children to stay until 2.45 p.m.

Maximum 26 children per session

• playing naturally • learning naturally

We offer an excellent range of pre-school activities for 2½ to 5 year-olds where they can learn through play in an informal friendly atmosphere.

Contact us for more information about admissions

01372 361021 [www.stmichaelscommunitynursery.co.uk](http://www.stmichaelscommunitynursery.co.uk)

## Solution to the December crossword

**Across:** 1 Yippee 4 Icebergs 9 Ulcer 11 Emmy 12 Tofu 15 Routing 16 Edam 19 Ogre 20/1D/10A God Rest You Merry Gentlemen 23 Loner 24 Snog 25 Film 28/27 White Christmas 29 Spraying 30/13 Jingle Bells.

**Down:** 2 Pick-me-up 3 Earn 5 Consumer goods 6 Billboards 7 Rumble 8 Sanest 10 George Eastman 14 Bing Crosby 17 Desiring 18 Stampede 21 Flocks 22 Snorer 26 WWII.

## BRAIN TEASER answer: Who's in charge?

## Suitable items for the foodbank collection

Tinned veg / tomatoes / soup / sauces / baked beans	Washing-up and cleaning products
Powdered milk / UHT milk (green and blue only)	Tissues / Paper towels / Tampons
Rice pudding / Long life sponge puddings	Men's / women's toiletries
Coffee / Tea bags / Long life fruit juice	Laundry products
Pasta / Rice / Pulses / Instant mash	Nappies
Jam / honey / marmalade / spreads	Pet food
Sugar (500g bags only)	

**Please do not include out-of-date items or those that require refrigeration.**



### LOCAL FOOD BANK COLLECTION POINTS

#### MICKLEHAM

Garden Corner off Old London Road  
Mary Banfield 01372 373912

#### WESTHUMBLE

St Anthony, Pilgrims Way  
Sue Tatham 01306 882547



A priceless snap taken at the crib service. Everyone seems a bit underwhelmed.



## Patience

Our value this half term is patience.

The children are learning about the importance of waiting. We have discussed how difficult this is when you really want something or you really want something to happen or change. We have talked about waiting with a positive attitude and how rewarding the end result can be when we approach patience in this way. The children have learned how Christians wait patiently for God to do things at the right time and how they trust that God has the answers.

For a reflection activity, the children have taken part in some mindful colouring as a way of understanding how waiting patiently can reap some fantastic rewards.

The children have also learned about patience with themselves, with others, with circumstances and with nature.

### Importance of PE

At St Michael's we put great importance on being healthy in mind, body and soul and part of this is giving the children plenty of opportunities to take part in physical activity. Research shows that regular physical activity increases

cognitive control, improves behaviour and supports well-being.

We try to get the children out in the fresh air as much as possible for this. The New Year started with a return to curriculum PE which is gymnastics this term and also our regular, weekly 'Golden Mile' sessions. This is an opportunity for the children to compete against themselves and improve their fitness levels by challenging themselves to increase the number of laps they do around the playground. In addition to this, the children have returned to participating in Forest School lessons and our new Dance Scheme 'imoves'. We also give the children opportunities for regular physical rest breaks with '5-minute' dance and mindfulness activities one of these is 'Jump Start Jonny'.

### Fire and Ice

Our topic this term is 'Fire and Ice'. This is both a history and geography topic split into two halves. For 'Fire' the children will learn about the Great Fire of London. They will find out how it happened and who was involved. For the 'Ice' part of the topic, the children



**St Michael's School**

[stmichaels-dorking.surrey.sch.uk/](http://stmichaels-dorking.surrey.sch.uk/)

will learn about life in the arctic. They will learn about the physical and human features, the type of animals that live in the arctic and they will compare living in the arctic to life in a city. The teachers have set up fun topic tables for the children to explore with interesting fact books and activities such as word searches, puzzles, igloo building from Lego and arctic animals to create mini worlds.

### Lunchtime Club

Our lunch time club 'POP' (place of peace) has returned, and Mrs Travers has organised some very inspiring craft activities that the children can take part in. Recently, she linked the activity to our Art unit on 'Sculptures' and the children have created human forms using a variety of materials.

Nicola Cleather







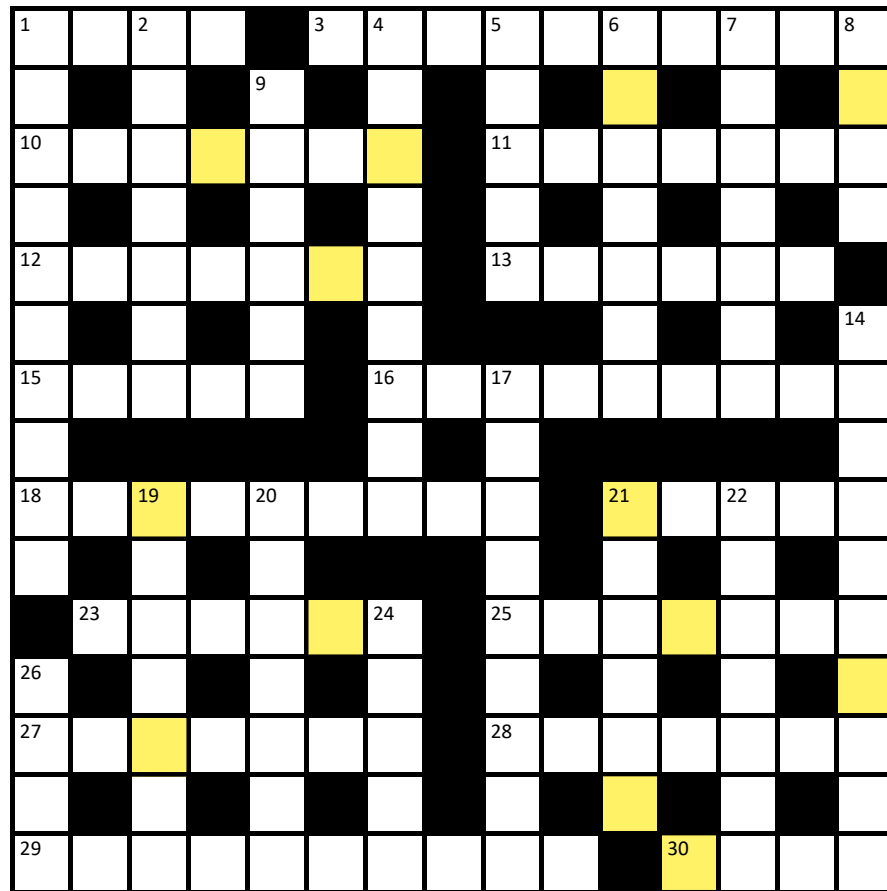
## Cryptic Crossword

The golden squares can be made into someone famous for 1D 9, 16 15 21, and 13 15 24 (6,7)

### Across

- 1 Building a company with lots of aircraft and lots of ships (4)
- 3 French novelist is after someone who can turn him into stone with some cheese (10)
- 10 In the East End, it's difficult to have time for feelings of enthusiasm (7)
- 11 Tell innermost thoughts to French bust (7)
- 12 Sulked angrily about head of government coming up with clumsy solutions (7)
- 13 Silliest naked kinky symbols of pure femininity (6)
- 15 See 16
- 16/15/21 Heathen thief got thin when tossing and turning during difficult sleeping conditions (2,3,4,2,3,5)
- 18 Design neat grids with coloured stars (3,6)
- 21 See 16
- 23 Lots of people providing collection of natural highs (6)
- 25 As dictator says, tax directly and with a sense of obligation (7)
- 27 How Tarzan lisps that he's not bonkers for producing intestinal gas (7)
- 28 Boost in living accommodation by English leader (7)
- 29 The top of this is to be avoided when outrageously plastered with the first sign of dementia? (10)
- 30 Tips staff for revealing a way to catch their attention (4)

**The solution to last month's crossword is on page 26.**



### Down

- 1 Meals in lodgings after dark is something that used to be vital for teachers (10)
- 2 With respect to lack of confidence, the answer is fortification (7)
- 4 Sob noises could be what you end up with from acting on this infatuation (9)
- 5 Grew loudly ill in the end from substandard fare (5)
- 6 Unable to change without ecstasy and lots of space dust (7)
- 7 Part of soap opera filmed live on location is shockingly lewd (7)
- 8 Many paratroopers like a bit of a jumper? (4)
- 9 Carl, initiator of learning and eye-opener to a scene of earthly complexity (6)
- 14 Utter untruths given to the leader with the most majesty (10)
- 17 Get up and go following stretch limo spin on the road (4,5)
- 19 Someone forced to serve in floating contraption surrounded by runaway stags (7)
- 20 Get fix from where lady looks after number one (7)
- 21 Tell the secret of a forget-me-not if you dig it up! (6)
- 22 Laughs loudly as intestinal gas was all over the place (7)
- 24 Sally or Frank are in W.C. endlessly (5)
- 26 Sounds like Big Bird's in the New York State Museum? (4)

Andrew Tatham

## What is hiding in the Old Man's Beard\*?

*\* Clematis vitalba also known as Traveller's joy, a member of the buttercup family often seen scrambling over hedgerows. Very common on Box Hill.*



## Need help with your accounts?

Running a business needs time and energy – don't waste your time working on your accounts when you can work on your business instead!

At a4c we provide fixed fee accountancy solutions with friendly support throughout the year. Services include accounts, tax returns, VAT, payroll, book-keeping etc.

Friendly, approachable and local to Dorking – we enjoy getting to know our clients so call us today for a no obligation chat.

**We LOVE numbers so YOU don't have to!**

**01737 652852**

esther@a4cgroup.co.uk

www.a4cgroup.co.uk



**RANMORE RENOVATIONS**

## LOCAL BUILDER

New bathroom installation specialist,  
plumbing/heating,  
electrics, plastering & tiling,  
decorating, Karndean flooring.  
All building works and property  
maintenance undertaken.  
All works guaranteed  
36 years' experience

Please contact Damian  
07940 599845 / 01306 880332  
musgrovebuild@gmail.com



**01306 88 55 33**

For quotes or to make a booking  
email us on: [Enquiries@dorkingtaxis.co.uk](mailto:Enquiries@dorkingtaxis.co.uk)

[www.dorkingtaxis.co.uk](http://www.dorkingtaxis.co.uk)

- 4 / 6 / 8 Seaters
- Airport specialists
- Ferry ports & Eurostar
- Courier services available
- Home to School Transport service available
- Long distance journeys welcome
- All drivers & vehicles are fully vetted by MVDC & Surrey County Council
- Lady drivers available on request
- All major card payments accepted



A local, award-winning business supporting people living in Epsom and Mole Valley, enabling them to remain living independently AT HOME as well as providing companionship and colour to peoples lives.

**RATED AS OUTSTANDING BY CARE QUALITY COMMISSION**

Committed to providing a quality, trusted and consistent home care service, we only recruit local CareGivers and match every CareGiver to every client so the same person will call each time.

**01372 741544**

[simon.burrowes@homeinstead-epsom.co.uk](mailto:simon.burrowes@homeinstead-epsom.co.uk)

[www.homeinstead.co.uk/epsom](http://www.homeinstead.co.uk/epsom)

**John Wadsworth**



CALL NOW FOR YOUR FREE VALUATION  
**01372 450500**

[www.johnwadsworth.co.uk](http://www.johnwadsworth.co.uk) [sales@johnwadsworth.co.uk](mailto:sales@johnwadsworth.co.uk)  
A professional efficient and friendly service





**RESIDENTIAL • COMMERCIAL  
AGRICULTURAL • SCHOOLS • ACOUSTIC  
HOARDING • GATES • SECURITY**

**RICHARDSON & BRADS FENCING LTD**  
**T: 01306 640 143 - 01483 414 745**  
 E: [INFO@RBFENCINGLTD.CO.UK](mailto:INFO@RBFENCINGLTD.CO.UK)  
 W: [WWW.RBFENCINGLTD.CO.UK](http://WWW.RBFENCINGLTD.CO.UK)  
 A: 168 SOUTH STREET, DORKING, SURREY, RH4 2ES  
 UNIT 45 MARTLANDS INDUSTRIAL ESTATE, SMARTS HEATH LANE, MAYFORD, GU22 0RQ

# J S Wilson

**Mickleham**

## Carpentry & Building Services

Extensions ~ Conversions  
 Refurbishments ~ Property Maintenance  
 Fully guaranteed ~ Fully insured  
*One call WILL solve it all*

Contact Jason on: 07761 926684 or 01372 379359  
[info@jasonswilson.co.uk](mailto:info@jasonswilson.co.uk)

## MEABY & Co

solicitors

**Strength & wisdom in law & business since 1848**

Meaby & Co Solicitors sits proudly in the heart of Dorking High Street providing expert legal advice to individuals and businesses throughout the town and its surrounding area. With additional offices throughout London, our experienced team, our 5\* Google reviews and award winning service will ensure that all of your legal needs are supported on your doorstep.

**Specialising in:**

Residential & Commercial Property	Fraud & Private Crime	Reputation Protection
Wills, Trusts & Probate	LGBT Experts	Commercial & Corporate Law
Litigation and Mediation	Employment Law	Media & Entertainment
Crisis Management	Family & Divorce Law	Lease Extensions

Drop by our offices at 159 High Street, Dorking RH4 1AD or contact our switchboard on 01306 884432.  
 Need advice elsewhere? We can assist. We have branch offices in Camberwell, Soho & Chigwell.

**Switchboard:** 01306 884432 [www.meaby.co.uk](http://www.meaby.co.uk) @MeabyandCo meaby-&-co MeabyandCo meabyandco