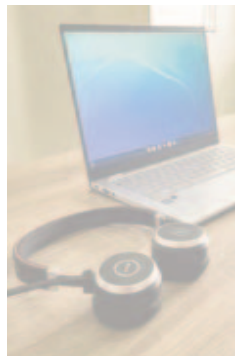


The Villager

April 2021 Volume 50 No 3

The community newsletter for Mapledurwell, Up Nately, Nately Scures and Newnham



REMOTE PARISH ASSEMBLIES VIA ZOOM

Local Government legislation requires a Parish Assembly to be held between 1st March and 1st June. 'Covid' Regulations allow the meeting to be held remotely before 7th May. Guidance from HALC (Hampshire Association of Local Councils) is to hold a remote Assembly this year.

WHAT IS A PARISH ASSEMBLY?

Hampshire ALC Advice Note (July 2004)

The Annual Parish Assembly of a Parish or Town Council is often referred to as the Parish or Town Meeting. It is a feature unique to Parish and Town Councils as it must be held by law each year (Local Government Act (LGA) 1972 Schedule (Sch)12 section 14(1)).

It should not be confused with the Annual General Meeting (AGM) of a Parish or Town Council. The AGM is a Council Meeting and the occasion when the Parish or Town Council, and only the members of the Parish or Town Council, elect their Chairman, Vice-Chairman, and representatives to Sub-committees and outside bodies for the year ahead.

Using the term Annual Parish or Town Assembly does help to avoid confusion.

The Annual Parish Assembly must be held between 1st March and 1st June (both dates inclusive) every year. It must not start before 18.00 hours to allow people to attend after work. (LGA 1972 Sch.12 section 14(1),(4).)

Who is entitled to attend? Anyone is entitled to attend, but only the voters on the Electoral Register for the Parish or Town are entitled to speak and vote. It is NOT a Parish or Town Council meeting, although it may well be that the Parish or Town Council has organised it.

If the Chairman of the Parish or Town Council is present then s/he must take the Chair (LGA 1972 Sch. 12 section 16(3)). It is usual for the Parish or Town Council to give a summary of its work during the year and it is good practice to invite County and District Councillors to do the same.

What power does the Annual Parish Assembly have? The meeting acts as a sounding board for the Parish or Town Council. It gives the electors an opportunity to speak and discuss matters of importance or concern to the community. Generally, Resolutions passed at this meeting are not binding upon the Council, but clearly if there is a large majority of those attending in favour of some action, it would be wrong for the Council to ignore the views of the electorate. (LGA 1972 Sch. 12 section 18 (2).)

What can be discussed at the Annual Parish Assembly? Anything that concerns the Parish or Town may be discussed. One of the main objectives is to achieve a large turnout. It is an opportunity to hear from representatives of the community and there is a chance to promote new ideas. In order to achieve a high attendance, a speaker on a topic of interest can be organised and the event publicised. A speaker's expenses can be met by the Parish or Town Council under the Chairman's allowance.

Village organisations may be invited to send a representative to speak. This is a social occasion and 'tea and biscuits' / 'cheese and wine' can be served. The meeting can be used to find out residents' views on issues of importance to the Parish. It is *the* opportunity to make their views known.

GOOD NEWS!! Odiham Open Gardens is happening on Saturday 29th May 2021. At least 12 gardens to enjoy and teas available. Tickets will be on sale at all participating gardens. More information next month.



POLICE UPDATE

Dear Residents

I am pleased to record a lack of reported crime within my area of this magazine. However in Hook from February 22nd to March 22nd there have been five burglaries, one of a house and four outbuildings. I urge all residents to please remain alert and report any suspicious activity, people or vehicles.

On February 27th 2021 a blue Ford Tourneo RE20 T** was seen in suspicious circumstances at a local farm in Newnham, please continue to report any suspicious vehicles as such sightings really helps form a picture for our intelligence.

On March 3rd I had reports of youths congregating at Mapledurwell village hall in breach of the COVID regulations and apparently smoking cannabis. A youth has been warned but I ask if residents see blatant breaches of the COVID regulations to please call 101; we have officers assigned to deal with such breaches.

As Spring has finally arrived may I please remind residents to keep their property secure, mark expensive tools and machinery and keep sheds and outbuildings secure with good locks, alarms if possible and good censer lighting.

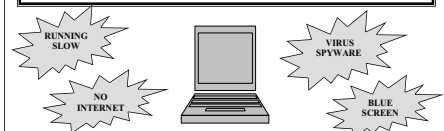
Many thanks as always for your continued support.

Andrew Reid, Local Constable

01256 389 050 07768 776844

andrew.reid@hampshire.pnn.police.uk

CONFUSED BY YOUR COMPUTER? TROUBLED BY YOUR TELEVISION SET?



On site visits include
Desktop, Laptop, Ipad, Printers

Prices from
£45 on site
Covers the first
Hour

Repair, Service & Support
Virus / Spyware removal
Problems with Email, Printer, Internet access (**fixed**)

Regular maintenance keeps your computer clean and fast

On site visits for
TV, Audio & Video Repair

Prices from
£45 + Parts
1st Hour

TV Tuning and Setup
Supply and Install Freeview receivers
Advice and Support.

Prices from
£35



01256 701480

07719738897

imcs@hotmail.co.uk

Mapledurwell & Up Nately

NOTICES FROM UP NATELY

Villagers in Up Nately are shocked and saddened to learn that an 11-year-old terrier was mortally wounded when attacked by another dog, just a few steps from the terrier's home, our thoughts are with her family.

TO VOLUNTEER LITTER PICKERS

'Motorists driving through our villages take delight in throwing out their rubbish, if some of that ends up on your verge, please pick it up and bin it, don't leave it to a tiny handful of residents. Let's keep our environment looking lovely!'

NOTES FROM PARISH COUNCIL MEETING OF 17TH MARCH

Remote meeting via Zoom.

PC Reid's report included sheep being chased by a drone (really a drone – this isn't a typo). Please contact Andy immediately if you see sheep being harassed by any means.

Village Hall Grounds – work completed Tree pruning – remove lower branches in the play area – raise crown and reduce width of trees in car park – cut back small lower branches (eye level) from boundary trees. Tidy trees and scrub between the hall and pavilion. Cut back scrub / hedging and trim sightlines at hall entrance. Repair fence near the hall entrance gate bordering the road. Tidy the Old Road and verge of debris and weeds.

Tennis Agreed with other court users a proposal from tennis coach to hire courts for lessons, to place advert in *Villager*, on notice boards. Also to set up a booking app for the courts.

Community Payback team Scheduled to return Thurs 8th April. Too late in year now for any more watercourse clearing work. To request they make the compost bays, then relocate to maintenance work in the Village Hall grounds.

Highways and drainage A map of all gullies in the Parish, including cleaning rota (frequency), provided by Highways Engineer. Thanks to Alison Stent and Kevin Rafferty for walking Mapledurwell roads to map the grips. Hugo Cubitt and Tom Horsey the same for Up Nately. To be mapped and forwarded to Highways.

BDBC Local Plan Update Issues and Options Summary Report as considered by BDBC Economic, Planning and Housing Committee on Thursday, 4th March. Councillor views

REMOTE PARISH ASSEMBLY VIA ZOOM

The Mapledurwell & Up Nately Parish Assembly will be held on Wednesday 5th May at 7pm.

The Parish Assembly provides an opportunity to give your views on what happens in the Parish, and to hear **the views of others**. For a link to join the Assembly and to suggest subjects for the Agenda, please email hugo.cubitt@gmail.com

SUGGESTED AGENDA ITEMS

Welcome
Chairman's opening comments
Thanks, introductions, speakers

OPEN DISCUSSION

- i Local Plan Update
- ii Watercress beds
- iii Allotments
- iv Up Nately Lands
- v Ponds
- vi Tennis courts & coaching
- vii Villager
- viii

expressed that the summary did not accurately views submitted with comments being taken out of context. Officers will resubmit.

'Up Nately land' The Parish Council is very pleased to accept the Owners' offer to lease on behalf of the Parish the small area of 'wooded' land – between the Up Nately pond and the canal – on behalf of the Parish. The land will be open access and managed for local amenity and for benefit of wildlife, biodiversity (as per guidance from Hampshire & IofW Wildlife Trust).

Parish Council roles The NALC *Good Councillor Guide* (2018):

'The clerk provides advice and administrative support, and takes action to implement council decisions. The clerk may have to act as a project manager, personnel director, public relations officer, finance administrator. The clerk is the proper officer of the council in law. Legally councils can delegate decisions to clerks as professional officers.'

'The council is a corporate body, a legal entity separate from that of its members. Its decisions are the responsibility of the whole body.'

'The best councils will have a clerk and councillors who work as a team to provide a service for the community.'

PARISH PLANNING APPLICATIONS

21/00718/HSE (Validated 25 Feb 2021)
The Farm, Tunworth Road. Erection of single storey orangery extension .

21/00552/HSE and 21/00553/LBC (validated 16 Feb) Rose Cottage Tunworth Road. Demolition of kitchen extension (1978) and erection of single storey oak framed side/rear extension.

21/00427/FUL (validated 22 Feb) Land to north of Nunnery House, Tunworth Road. Erection of 1 no. 4 bed dwelling, detached garage, vehicular and pedestrian access, servicing and landscaping.

21/00107/PIP (validated 25 Jan) The Farm, Tunworth Road. Permission in Principle for residential development for a maximum of nine dwellings.

20/03328/FUL (validated 27 Nov)
Waterside, Frog Lane. Redevelopment of redundant offices (and light industrial unit) to create two family dwellings.

20/02087/GPDOFF (pending 07 August)
Riverview House, London Road. Change of use from Class B1(a) office to Class C3 residential, for of 8 x one-bed flats. (Revised Flood Assessment Jan 2021.)

20/02124/FUL (pending 05 Aug) The Egg Yard, Greywell Road. Two x 3-bedroomed chalet bungalows.

20/01723/FUL (pending 29 June)
Brockwell (Paddock and Stable) Andwell Lane. Eight dwellings with service road.

20/00009/PIP (pending 03 Jan 2020)
Nunnery House, Tunworth Road. Permission in Principle for conversion of an agricultural building to one dwelling.

PARISH TREE APPLICATIONS

T/00107/21/TCA (8 Mar 2021)
Ambrunnen Tunworth Road. Removal of conifer hedge.

PROTECTING NESTING BIRDS The 'Bird Nesting Season' is officially from February until August (Natural England) and it is recommended that vegetation works (tree or hedge cutting) should be done outside of the nesting season. The busiest time for nesting birds is from 1st March until 31st July and of course varies according to species, season etc.

SPRING BLOSSOM WATCH

John K C Maclean, Tree Warden

Blossom is found on trees and shrubs that produce stone or pip bearing fruit. Cherry is prominent in proclaiming the arrival of spring. Look up from the road (just before that sharp left-hand bend towards Tunworth from the Mapledurwell pond) and you can hardly miss a magnificent example of cherry in all its blossom on a tree that stands 30ft high on the bank.

The first to show in the hedgerow is blackthorn with its mass of delicate five-petal blooms before its leaves are open on its spikey branches. This is followed closely by hawthorn that reveals its foliage first. In May, we start to see clusters of blossoms supporting their own weight, such as those found on rowan or elder.

Catkins hang on many of our trees and have done so from February onwards. Their name is taken from an old Dutch word for resembling a kitten's tail. Perhaps catkins should be called nutkins after Beatrix Potter's red squirrel because most of them produce walnuts, acorns, hazel and all our other types of nut. A tree has male and female catkins. Whilst they may look rather lifeless or dormant, they are incredibly busy distributing or catching sticky pollen granules that float on the late winter breezes. A tree with lots of female flowers ensures a good crop of nuts in the autumn.

So when you take a walk, why not study a tree of your choice following its winter dormancy? It could be a rather interesting project especially with an eye to writing it up for The Villager later this year.

This would entail observing its blossom, canopy and whatever it produces – edible or inedible. After all, whilst Covid restrictions give us more time to stand and stare, this could foster greater awareness and contribute a better local record of our trees together with the animals and birds that climb, feed or nest in them.



In a few years, the springtime view of our WWI Commemorative Tree Plantation might look something like this. Wild cherry blossoms in the foreground; it fringes the saplings, some of which grew from the seeds that we planted in November 2018.

PLEASE TAKE LITTER AND DOG POO BAGS HOME WITH YOU

These yellow plastic bags have been accumulating in the past few weeks, strewn alongside that pretty little path running behind St Mary's Church.

They have now been properly disposed of – by people other than the dog owner(s).

Please can the dog owner(s) have with them some means to carry the bags home and dispose of them rather than leaving for others to clear up?



BONFIRES

If lighting bonfires please be mindful of wildlife, neighbours and wind direction.

NOTICE OF ELECTION

Mapledurwell and Up Nately Parish Council Election of Parish Councillors

Parish/Parish Ward	Number of Councillors to be elected
Mapledurwell and Up Nately	Five

1. Nomination papers must be delivered to the Returning Officer at Civic Offices, London Road, Basingstoke, RG21 4AH between 10 am and 4 pm on any working day from the date of publication of this notice (excluding bank holidays) but no later than 4pm on Thursday 8 April 2021. Appointments can be arranged by email: electoral.services@basingstoke.gov.uk or by telephone: 01256 845467.
2. Nomination papers may be obtained from the offices of the Returning Officer, Civic Offices, London Road, Basingstoke, RG21 4AH, during the times stated above.
3. If any election is contested the poll will take place on Thursday 6 May 2021.
4. Applications to register to vote must reach the Electoral Registration Officer by 12 midnight on Monday 19 April 2021. Applications can be made online: <https://www.gov.uk/register-to-vote>.
5. Applications, amendments or cancellations of postal votes must reach the Electoral Registration Officer at Civic Offices, London Road, Basingstoke, RG21 4AH by 5 p.m. on Tuesday 20 April 2021.
6. Applications to vote by proxy at this election must reach the Electoral Registration Officer at Civic Offices, London Road, Basingstoke, RG21 4AH by 5 p.m. on Tuesday 27 April 2021.
7. Applications to vote by emergency proxy at this election must reach the Electoral Registration Officer at Civic Offices, London Road, Basingstoke, RG21 4AH by 5 p.m. on Thursday 6 May 2021.

Dated: Monday 22 March 2021

Rebecca Emmett
Returning Officer

Newnham & Nately Scures

REPORT FROM PARISH COUNCIL MEETING OF 10TH MARCH

Remote meeting via Zoom.

Water End Lane The ditch bordering the football grounds needs clearing. Water End Lane is in Newnham but the land immediately to the South West – is in Old Basing, as is the verge and ditch. Landowners are responsible for their ditches. This has been brought to the attention of Old Basing Parish Council and County Councillor Elaine Still. Flytipping on the verges has been cleared by BDBC following report.

Baredown bus shelter Agreed to repair the bus shelter rather than build new. To replace roof, reboard, new felt and new trim/facia; replace rotten feather edging on bottom five or six rows; re-attach shelter to steel bolts at rear. Work to be scheduled asap.

Strings boardwalk on Church Path Newnham FP 3. Thanks to Footpaths Warden for affixing the dedication plaques supplied by Angela, for Nigel Downes, Footpaths Warden for Newnham Parish from 2000 to 2019.

Parish Lengthsman Funding from HCC guaranteed for 2021-22.

Buildout and signage by the Clubroom HCC 'Safer Roads' team will revisit the buildout by the Clubroom after Easter and reassess the planned signage changes, hopefully now to take place this coming financial year.

Pubs Guidance is opening from 12th April serving outside, rule of six or two households, with table service only.

BDBC Local Plan Update
Issues and Options Summary Report considered by the BDBC Economic, Planning and Housing Committee. Councillors expressed concern that the summary did not accurately reflect views submitted with comments being taken out of context. The report was returned to Officers. The Parish Council noted inconsistency in attributing and recording responses.

REMOTE PARISH ASSEMBLY VIA ZOOM

The Newnham Parish Assembly will be held on Wednesday 28th April at 7pm.

The Parish Assembly provides an opportunity to give your views on what happens in the Parish, and to hear the views of others. For a link to join the Assembly and to suggest subjects for the Agenda, please email clerk.newnham@parish.hants.gov.uk

SUGGESTED AGENDA ITEMS

Welcome
Chairman's opening comments
Thanks, introductions, speakers

OPEN DISCUSSION

- i BDBC Local Plan update
- ii A30 speed limits and gateways
- iii Pubs
- iv Defibrillators
- v Newnham Green and Pond
- vi Road signage by Clubroom
- vii Villager
- viii

Water End Crossing point

Highways have installed a new footway across the central reservation by Water End Park at the crossing point to the bus stops. However the path is wide enough to accommodate a vehicle and so 'invites' drivers exiting the Park to cross at that point if turning right. Referred to Councillor Still and the Highways Engineer. Requesting posts (passive safety posts) to close the path to vehicles.

Kingsbridge – new Parish hedge

Since the verge and road edge along the Barracks Road has been cleared, a new Kingsbridge End fence has been installed. Noting that a new fence was needed, the hedge can be replenished next year as needed.

The Clubroom can be selectively open from 12th April, fully open from 17th May. On May 6th it will be used for polling day. During the most recent lockdown there have been occasional single users making teaching videos. The finances are in good order and outgoings presently minimal, the solar panels will soon have more input.

PARISH PLANNING APPLICATIONS

21/00332/HSE (11 Mar) The Pink House, Newnham Lane. Open porch to west elevation.

21/00025/FUL (25th Jan) Nately Place, Scures Hill. Replacement detached dwelling and detached ancillary accommodation building, following demolition of existing dwelling house and garage. Erection of acoustic fencing to front/road-side boundary and landscaped retaining bank in bound of south boundary to facilitate leveling within rear garden.

21/00038/FUL (Refused 17 Mar) Land at Blackstocks Lane. Erection of 1 no. dwelling. (Replacement application for 20/01666/FUL withdrawn 7th Dec.)

16/03282/RET (pending 15th Sep 2016) Manor Farm, Blackstocks Lane. 'Change of use from solely agricultural to mixed agricultural use to include the diversification of farm open days for no more than 100 days in a year, with ancillary tea room and associated car parking.'

TREE APPLICATIONS

T/00106/21/TCA (08 Mar) Cromwells, The Barracks. T1-Oak, crown raise to 5m all round. This is to allow more light over the garden and two limbs over common land. T2-Pine, Fell. Tree is heavily ivy clad and approximately 4-5m tall, heavily suppressed. T3-Apple, reduce beyond previous pruning points to give future branch structure for fruit production and easier management. T4-Ash, cut back to boundary. Tree shows extensive signs of ash dieback. T5-Ash, cut back to boundary. Tree has possible historic root heave or suppression as now situated into large neighbouring macrocarpa. T6-Ash, fell. Previous root heave and leaning heavily towards listed property. T7-cypress, reduce to suitable height below rubbing of T6 between 7-10m

T/00500/20/TPO (23 Sept) 3 Kingsbridge Copse. Two Oak and one Ash: prune.

The pond throughout the year: MARCH



advertisement

Kevin Curtis
Carpenter & Joiner

ALL TYPES OF CARPENTRY AND JOINERY WORK

FREE ESTIMATES, PROMPT PROFESSIONAL ADVICE & RELIABLE SERVICE

Evenings **01256 762 094**
mobile **07900 691 605**
email hellohookcarpentry@btinternet.com

Checkatrade membership number 230871



WE ARE TAKING BOOKINGS FOR APRIL

Chris, Donna & the Team look forward to welcoming you all back

We have the 'Amber Light' to open from 12th April serving outside only, under the rule of six or two households, and it is table service only.

OUR REVISED & TEMPORARY OPENING TIMES

From 12th April

Monday & Tues closed
Wednesday to Sat 12 noon to 8pm
Sunday 12 noon to 4pm

From 17th May

Monday closed
Tuesday to Sat 12 noon to 3pm
 5.30pm to 10pm
Sunday 12 noon to 5pm

01256 761896

www.oldhousenewnham.uk/



IRON BULL ROADHOUSE

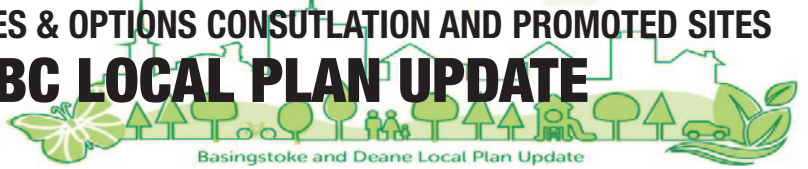
Opening APRIL '21

THE IRON BULL ROADHOUSE AT WATER END

will offer premium coffee, tasty breakfasts, hot meals and a range of beers / wines / ciders

Please keep in touch via FB
www.facebook.com/IronBullRoadhouse/

ISSUES & OPTIONS CONSULTATION AND PROMOTED SITES BDBC LOCAL PLAN UPDATE



Basingstoke and Deane Local Plan Update

A summary report on the responses to the 'first round' of Local Plan Update consultations was presented to BDBC's Economic, Planning and Housing (EPH) committee on Thursday, 4th March.

All responses to the consultation have been logged, acknowledged and recorded by BDBC officers; all are available on the borough council website.

The report in full amounts to some 110 pages. The bulk is a summary of responses to the Issues & Options Consultation.

ISSUES AND OPTIONS SUMMARY REPORT Councillors on the EPH Committee raised concerns that the paraphrasing of comments did not always accurately reflect their original intent and context. The Issues and Options Summary Report was returned to officers to be re-presented at a later date. Mapledurwell & Up Nately and Newnham Parish Councils note that a request for Chalk Streams to be included within Environmental Assets received no mention.

PROMOTED SITES The report summarises the sites most commented upon including in Mapledurwell & Up Nately, Newnham and the Loddon Valley. As this Local Plan Update progresses the Loddon Valley is likely to again face threat from development.

Sites at Mapledurwell (MAP001 - 4)	22	Included impact on SSSI and valued high quality landscape; the sustainability of the sites; impact on the Conservation Area; lack of mains drainage; site specific factors including access and ground conditions and impact on the character of the settlement.
Sites as Nately Scores (NEW001-2)	Approx. 20	Included impact on the A30 and local roads; the sustainability of the sites; impact on heritage assets, rural sense of place, village character and tranquil rights of way; impact on wildlife corridors, chalk streams, SINCs and ancient woodland; and impact on local community facilities.
Site to the East of Basingstoke and Old Basing (OLD002 - 7)	19	Included impact on community facilities and infrastructure including local roads and the A33; the rural character of the area and impact on local village character; impact on landscape and biodiversity including the rivers Loddon and Lyde; and flood risk.

NOTICE OF ELECTION

Newnham Parish Council Election of Parish Councillors

Parish/Parish Ward	Number of Councillors to be elected
Newnham	Six

- Nomination papers must be delivered to the Returning Officer at Civic Offices, London Road, Basingstoke, RG21 4AH between 10 am and 4 pm on any working day from the date of publication of this notice (excluding bank holidays) but no later than 4pm on Thursday 8 April 2021. Appointments can be arranged by email: electoral.services@basingstoke.gov.uk or by telephone: 01256 845467.
- Nomination papers may be obtained from the offices of the Returning Officer, Civic Offices, London Road, Basingstoke, RG21 4AH, during the times stated above.
- If any election is contested the poll will take place on Thursday 6 May 2021.
- Applications to register to vote must reach the Electoral Registration Officer by 12 midnight on Monday 19 April 2021. Applications can be made online: <https://www.gov.uk/register-to-vote>.
- Applications, amendments or cancellations of postal votes must reach the Electoral Registration Officer at Civic Offices, London Road, Basingstoke, RG21 4AH by 5 p.m. on Tuesday 20 April 2021.
- Applications to vote by proxy at this election must reach the Electoral Registration Officer at Civic Offices, London Road, Basingstoke, RG21 4AH by 5 p.m. on Tuesday 27 April 2021.
- Applications to vote by emergency proxy at this election must reach the Electoral Registration Officer at Civic Offices, London Road, Basingstoke, RG21 4AH by 5 p.m. on Thursday 6 May 2021.

Dated: Monday 22 March 2021

Rebecca Emmett
Returning Officer

Church Notices

'Journeying together, we worship God and serve the community'
www.united-parish.org.uk

From the Parish Registers...

Funerals

2nd March at Worting Road Cemetery:
Marlene Shefford.
15th March at Basingstoke Crematorium:
Audrey Jones.
May they rest in peace.

FROM THE MINISTRY TEAM



As you read this article we will be in the midst of Easter season.

It may still feel different from normal but I am guessing that one constant,

pandemic or not, is the presence of Easter eggs or other assorted chocolate delights.

I wonder what sort of Easter egg eater you are? I have some family and friends who have, what seems to be, almost a superpower of unwrapping an Easter egg, eating a small piece, re-wrapping the egg and placing it back in the cupboard to be enjoyed over many coming weeks. Whereas I and other friends display no such self-control!

Of course the tradition of eggs at Easter developed because they are a symbol of new life and are also thought to represent the breaking open of the tomb that first Easter Day. They are markers of joy and celebration at the end of the long weeks of Winter and Lent, just as Jesus' resurrection was a sign of hope and new life to those of his friends who discovered the empty tomb that morning and to all those who have believed the story in the centuries since.

In the quiet, early hours that first Easter morning something happened which changed the world and ever since this story of resurrection, hope and new life has been told and re-told through the ages.

Continued...



Helen Chatfield
Youth Pastor
North Hampshire Downs Benefice

KIDZONE

Hi Everyone!

I don't know about you, but I've had to pay a lot more attention to my hands over the last year – wash them for 20 seconds, don't touch things, no shaking of hands...but just take a look at your hands - have you ever stopped to think just how amazing they are?

AMAZING FACTS:

There are 27 bones, 29 joints and at least 123 ligaments in the human hand

What sets our hands apart from other animals is our opposable thumbs—this means our thumbs and fingers can work together (except for koala bears, who also have opposable thumbs!)

You cannot get a tan on your palm and underside of your fingers

And finally, the vein on your ring finger is called Venna Amoris—it has a direct line with the human heart and is known as the vein of love. That's why we wear a wedding ring on the left hand's finger!

Look at your hand. Wiggle your fingers. It is such a wonderful piece of engineering! The hand is one of the reasons why human beings have been so successful. Think of all the things we can do with our hands, such as gripping things, picking up small items, playing musical instruments, communicating and creating works of art.

I wonder if you've ever seen this picture of hands before. It is part of Michelangelo's painting on the roof of the Sistine Chapel in Italy. It represents God reaching out to the world. Now we don't really believe God is sitting in the sky, reaching down to us with His hands. It just represents that God wants to be part of our world, caring for it and loving it. But how can He do that, if He doesn't have hands of His own?



continued...

CHURCH SERVICES IN THE UNITED PARISH IN APRIL

DATE		9:00 am	11:00 am	5:00 pm
Apr-02	Good Friday		Up Nately Hymns & Reflections LLM Alan Hoar	
		Up Nately BCP HC LLM Alan Hoar	Newnham CW HC Revd Linda Scard	
04-Apr	Easter Sunday	Mapledurwell Family Service Helen Chatfield	Greywell Family Service Suzanne Newcombe	
Apr 11	2nd Sunday of Easter		Greywell MS Revd Michael Chatfield	
Apr-18	3rd Sunday of Easter		Mapledurwell MS Reverend Linda Scard	Up Nately ES LLM Alan Hoar
Apr-25	4th Sunday of Easter		Greywell CW HC Revd Linda Scard	

Continued from the Ministry Team

It is a story that in many ways is so familiar but which, given the original circumstances, should never have been remembered outside a small group of mourning friends.

An executed trouble maker in a well-sealed tomb and two women arriving to carry out the anointing rituals, what is so special about that? Even the empty tomb was initially simply a cause of distress to those who loved the man meant to be inside.

But that morning, it was out of the emptiness of the tomb that the fullness of life appeared, it was out of the darkness of death that the light of life burst forth. New life and hope arriving from the most unpromising of situations.

This year I am sure we are all seeking new life, new beginnings and hope for the future. As we leave the short days of winter behind us and with the hint of summer being carried in on the spring breeze, we will be looking forward to the hope of sunnier days, time in the garden and maybe even holidays to enjoy.

We will also all be looking forward to the end of the hard days of restrictions on travel and contact with family and friends and hoping to see a new sense of life and joy spread through our communities and world as we pray that, with the promise of the vaccine, the hard days of the pandemic are over.

And it is my prayer that this Easter we will all discover afresh, or maybe for the first time, the joy and fullness of life that can be found in Jesus whose resurrection offers everyone hope for the future.

Reverend Helen O'Sullivan

KIDZONE continued...

There is a famous prayer by St Teresa of Avila, who lived in the 1500s:

Christ has no body now, but yours.
No hands, no feet on earth, but yours.
Yours are the eyes through which he looks
With compassion on this world.
Yours are the feet with which he walks to do good,
Yours are the hands with which he blesses all the world.

I wonder what you think this means...

One Christian who took St Teresa's prayer very seriously is a man called Millard Fuller. He was born into a poor American family, but, by the age of 30, he had become a millionaire. However, Millard and his wife, Linda, believed that God wanted them to do something different with their lives (and their hands) rather than simply making lots of money. They decided to sell

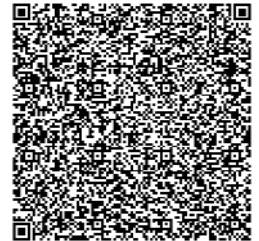


everything that they had, gave the money to the poor and joined with other Christians in helping poor families to build their own homes. Their charity, Habitat for Humanity, has now helped 9.8 million people find stability and independence by giving them safe and affordable shelter. The charity

encourages others to use their hands in this way to help poor families. Every year, thousands of people travel to different countries around the world to be God's hands, helping poor families to build their own homes.

We may not be millionaires, but we can choose to make a difference with our hands, with the things that we do, every day. This month's challenge - think about what you can **do** today to make a difference to our world!

If you want to try to do something practical with your fingers, scan this QR code, to learn our to do some finger knitting and make a gift for someone you care for!



See you next month!

Helen



Basingstoke and Deane

'VISION' FOR M3J7 APPROVED BY CABINET 9TH MARCH



Vision for Land North of the M3 at Junction 7

'The Vision aims to set out a joined-up approach for Land North of the M3 at Junction 7 in order to provide certainty for this area for partners, residents and infrastructure providers, as well as being used in discussions around investment in the future.

'It identifies key issues for consideration and provides some direction on how this area could be developed in the future.

'The Vision is intended to provide clarity to a range of partners and our communities and it is considered to be important to provide this in the context of successful place-making.

'The Council could choose not to prepare such a document at this time and, instead, address relevant issues in the draft Local Plan Update, scheduled for publication in winter 2021/22. However, this may mean that opportunities are missed, such as investment in new infrastructure, or services being provided in alternative locations which are less accessible for borough residents.'

WHAT IS A PARISH LENGTHSMAN?

Parish Lengthsman of old were employed to walk the length of the Parish keeping the roads in good order. Canals and railways also had their 'lengthsmen'.

For the modern day scheme County Councils have reinvented the term to apply to a contractor, assigned to a group of Parishes, who undertakes 'Highways'-related work which is important to the Parish but which would not otherwise feature on centralised County work schedules.

The scheme is funded in our case by Hampshire County Council for £1,000 worth of man hours per Parish per year. It's a reflection of the success of the scheme (and its popularity with Parishes) that funding continues and is guaranteed for 2021/22.

SCHEDULE ONE: DUTIES OF PARISH LENGTHSMAN

This schedule lists the duties the Parish Lengthsman may undertake.

1 Drainage

- Clearing existing drainage grips
- Maintaining ditches
- Cleaning channels
- Clearing outfalls
- Rodding pipes (off highway)
- Flood prevention works (as specifically directed by the Parish Council as 'further works')

2 Signage

- Cleaning (non illuminated)
- Minor repairs

3 Other Minor Works

- Remove soil/detritus
- Cutting back vegetation overhanging the road or footway
- Clearing footways of weeds/moss
- Removing vegetation from parapets or fences
- Grass strimming
- Reporting defects
- Sweeping
- Litter picking
- Removing flyposting
- Unauthorised sign and graffiti removal
- Cleaning street name plates
- Cleaning bus shelters
- Minor repairs to street furniture
- 'Village upkeep'.



PHOTO from eHive (Kingsnympton)



PHOTO Hampshire County Council

SCHEDULE TWO: EXCLUDED WORKS

This schedule lists the duties the Parish Lengthsman may not undertake.

1 Cleaning, repair or any work on:

- Street lighting
- Illuminated signs and bollards (ie any street furniture with an electrical connection)
- The live road;

and

- Patching and structural repairs
- Excavation due to possibility of underground apparatus
- Emergency call-outs to highway incidents.

The Parish Lengthsman for Mapledurwell & Up Nately, and for Newnham, is assigned from the 'Newnham' group.

If there are particular jobs you would like to see done in your Parish – complying with schedule one – please contact any member of the Parish Council or email the Parish Clerk.

VILLAGER CONTACT DETAILS

Editor Susan Turner 07515 777060 – su.newnham@btinternet.com

Distribution Lorna Cuthill 354651;

News Gathering Up Nately Liz Preece 762059; Mapledurwell: Lorna Cuthill 354651

Vicar Revd Helen O'Sullivan nhdbupcurate@gmail.com 01256 765496 / 07858 930 729



Basingstoke
and Deane

eNewsletter

<https://www.basingstoke.gov.uk/signup>