

# **BRAMLEY NEIGHBOURHOOD PLAN 2017 - 2032 MAPS**





# **BRAMLEY**

## **Neighbourhood Plan**

### **MAPS**

**Borough:** Waverley  
**County:** Surrey  
**Plan Period:** 2017 to 2032  
**Qualifying Body:** Bramley Parish Council

## **TABLE OF CONTENTS**

1. Introduction .....	1
2. Green Belt and AONB .....	2
3. Deciduous and Ancient Woodland .....	3
4. Bramley Village Centre .....	4
5. Rights of Way .....	6
6. Conservation Areas .....	8



## **1 INTRODUCTION**

- 1.1 This Maps document contains a series of maps referenced in the Report which are included in a separate document to avoid breaking up the text and enable readers to refer to relevant maps while reading the Report.



## 2 GREEN BELT AND AONB

- 2.1 Figure M2.1 shows the distribution of Green Belt and AONB in Bramley Parish. All bar the southern tip of Bramley is washed over by Green Belt, and only the main area of the village and a sliver of the eastern parish is not AONB. The villages of Womersh and Bramley effectively sit in the valley of Cranleigh Waters hemmed in by AONB to the west of Bramley and east of Womersh.

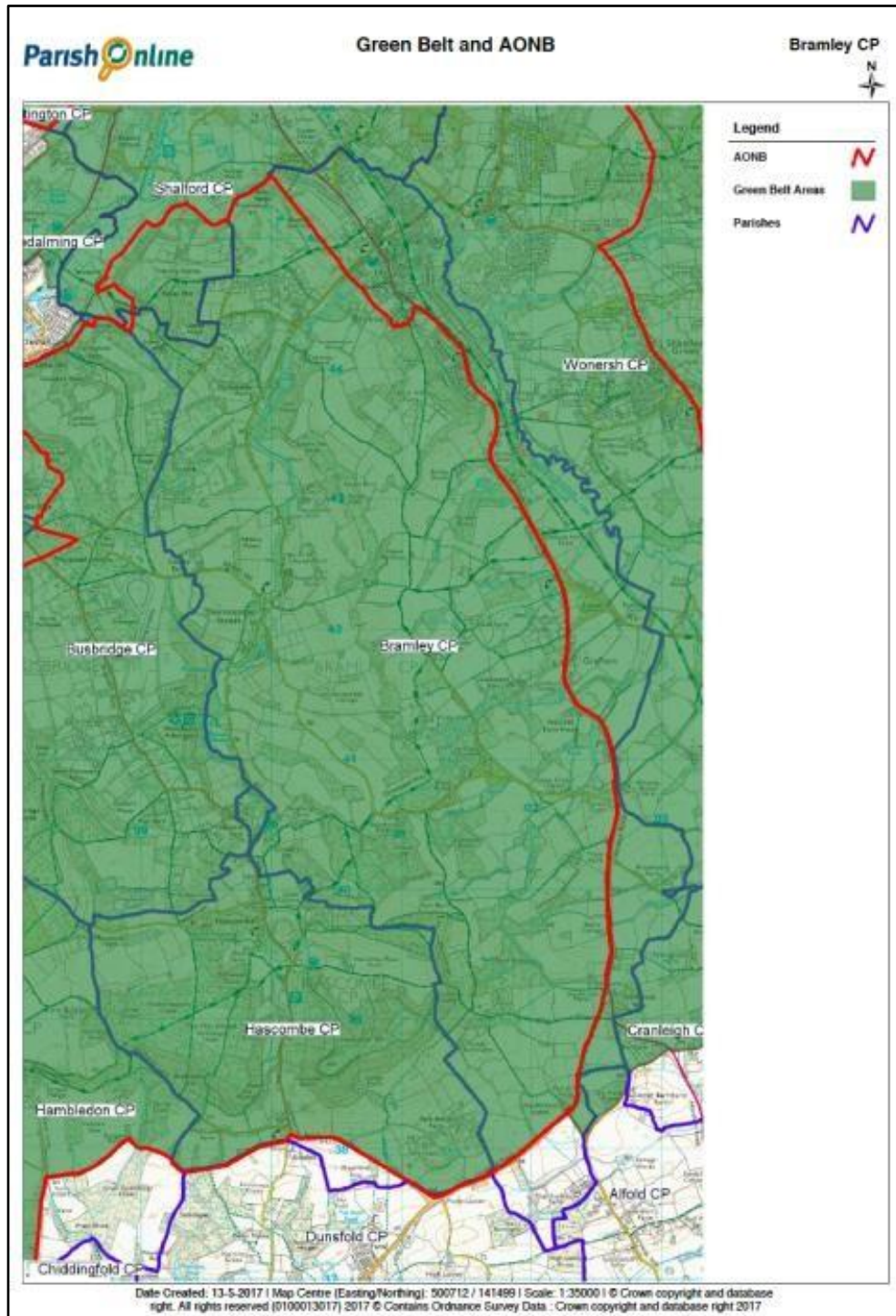


Figure M2.1: Distribution of Green Belt and AONB in Bramley Parish

### 3 DECIDUOUS AND ANCIENT WOODLAND

- 3.1 A band of deciduous with some ancient woodland runs to the east of the village on the boundary with Womersley. A significant further tract is at Birtley Green to the south east of the village but the most substantial tracts are just below the centre of the parish running north/east to south/west.

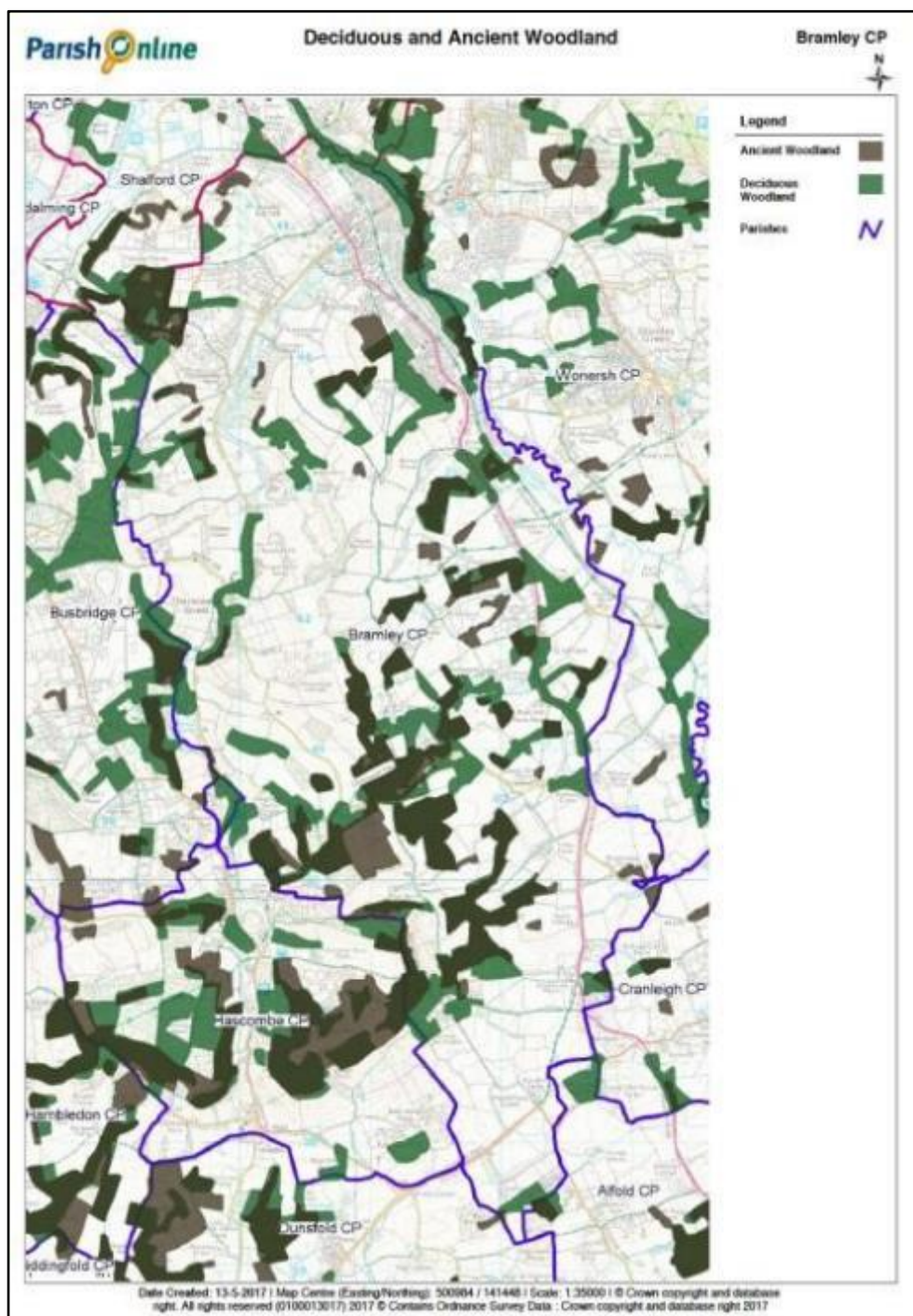


Figure M3.1: Distribution of Deciduous and Ancient Woodland in Bramley Parish



## 4 BRAMLEY VILLAGE CENTRE

- 4.1 This map (Figure M4.1) shows the village centre with the major residential roads such as Linersh Wood and Eastwood Road, and most of Chestnut Way and Birtley Rise running parallel to the A281.

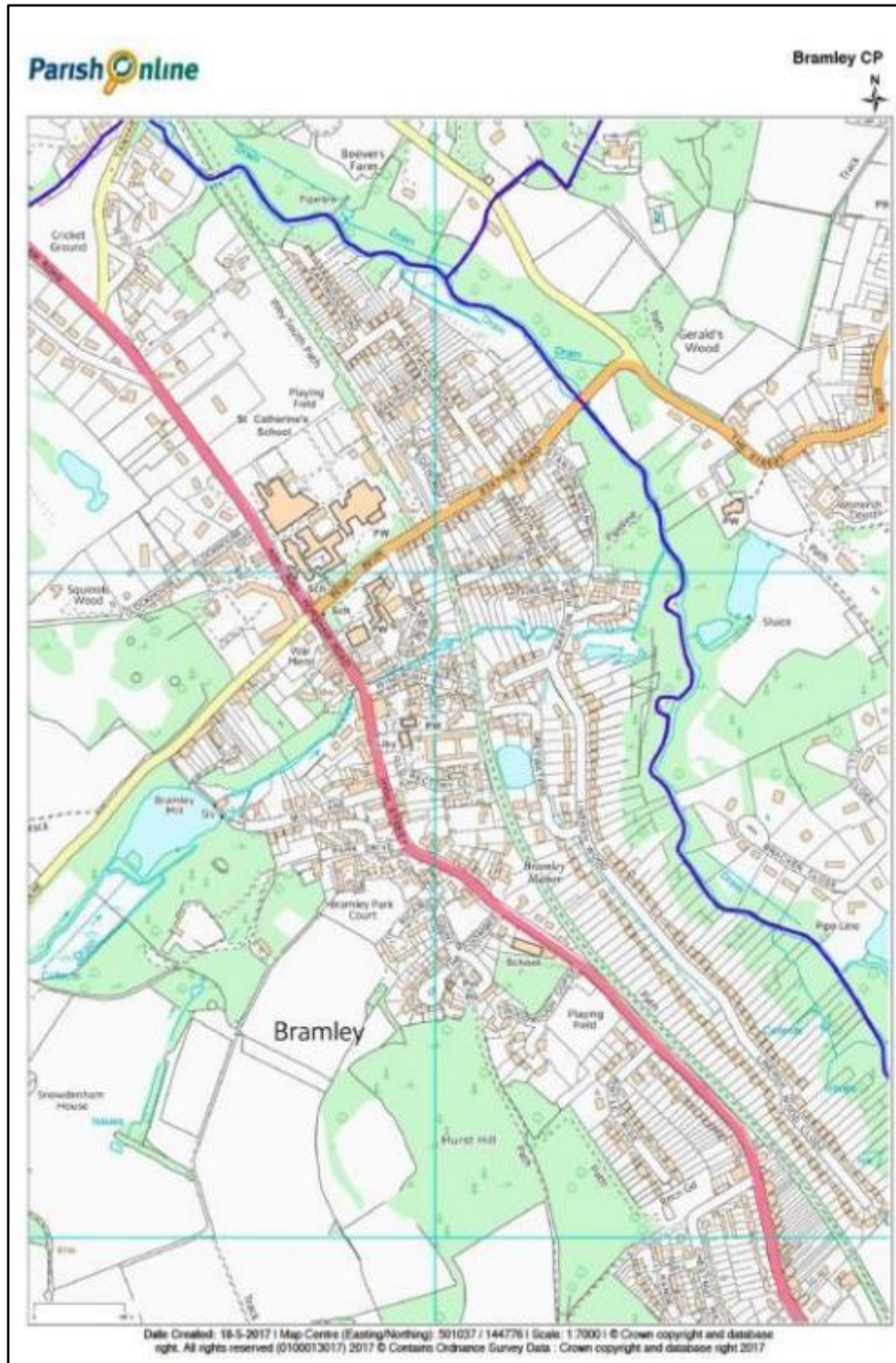


Figure M4.1: Bramley village centre

- 4.2 This map (Figure M4.2) shows the outline of the Bramley Local Centre. The envelope includes the main commercial properties and the adjacent community facilities, together with associated parking areas.

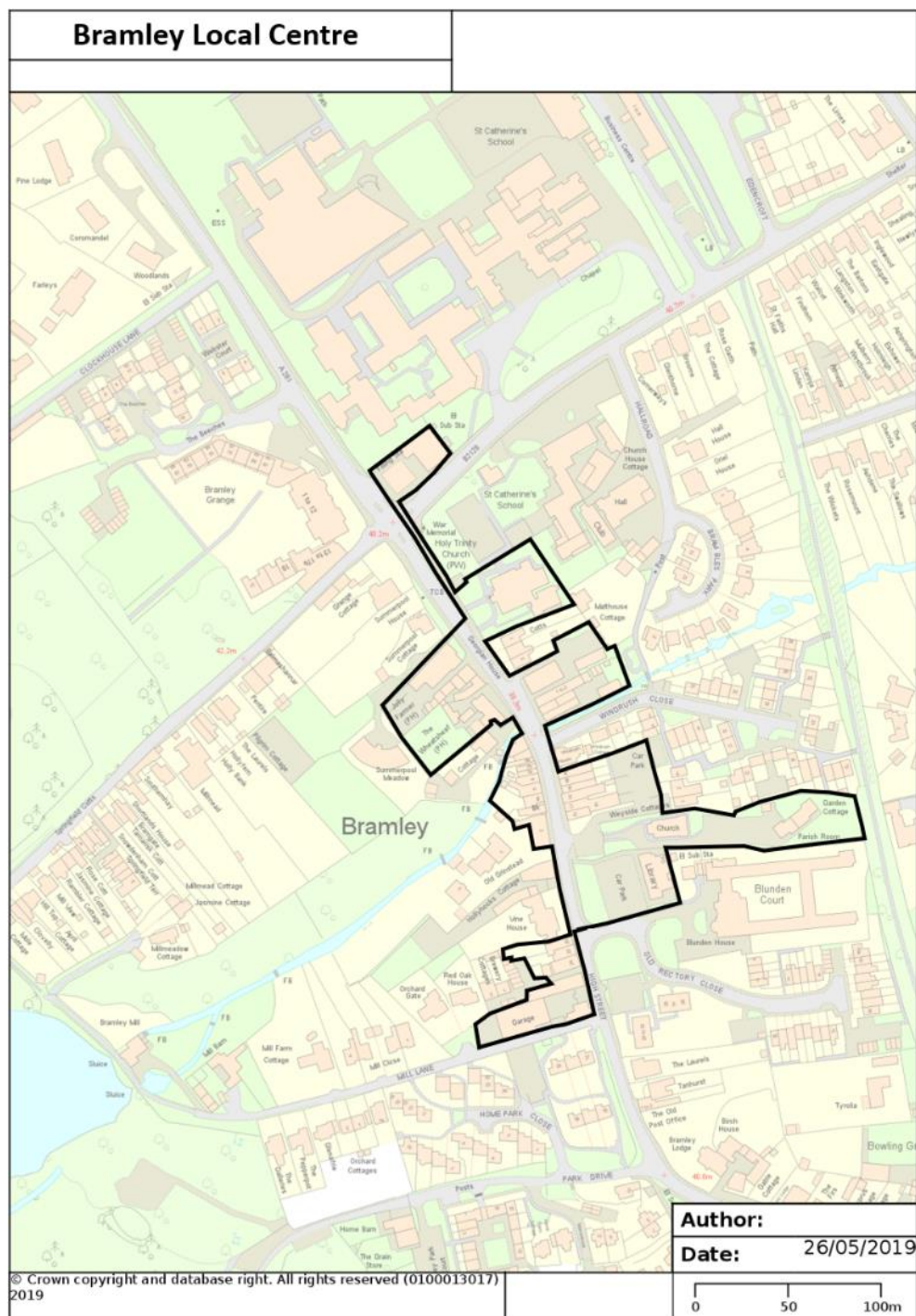


Figure M4.2: Bramley Local Centre



## 5 RIGHTS OF WAY

- 5.1 Figure M5.1 is a map showing the rights of way in the northern part of the parish, with the Downs Link and A281 running down the eastern boundary and a network of bridleways and footpaths across the rest of the parish.

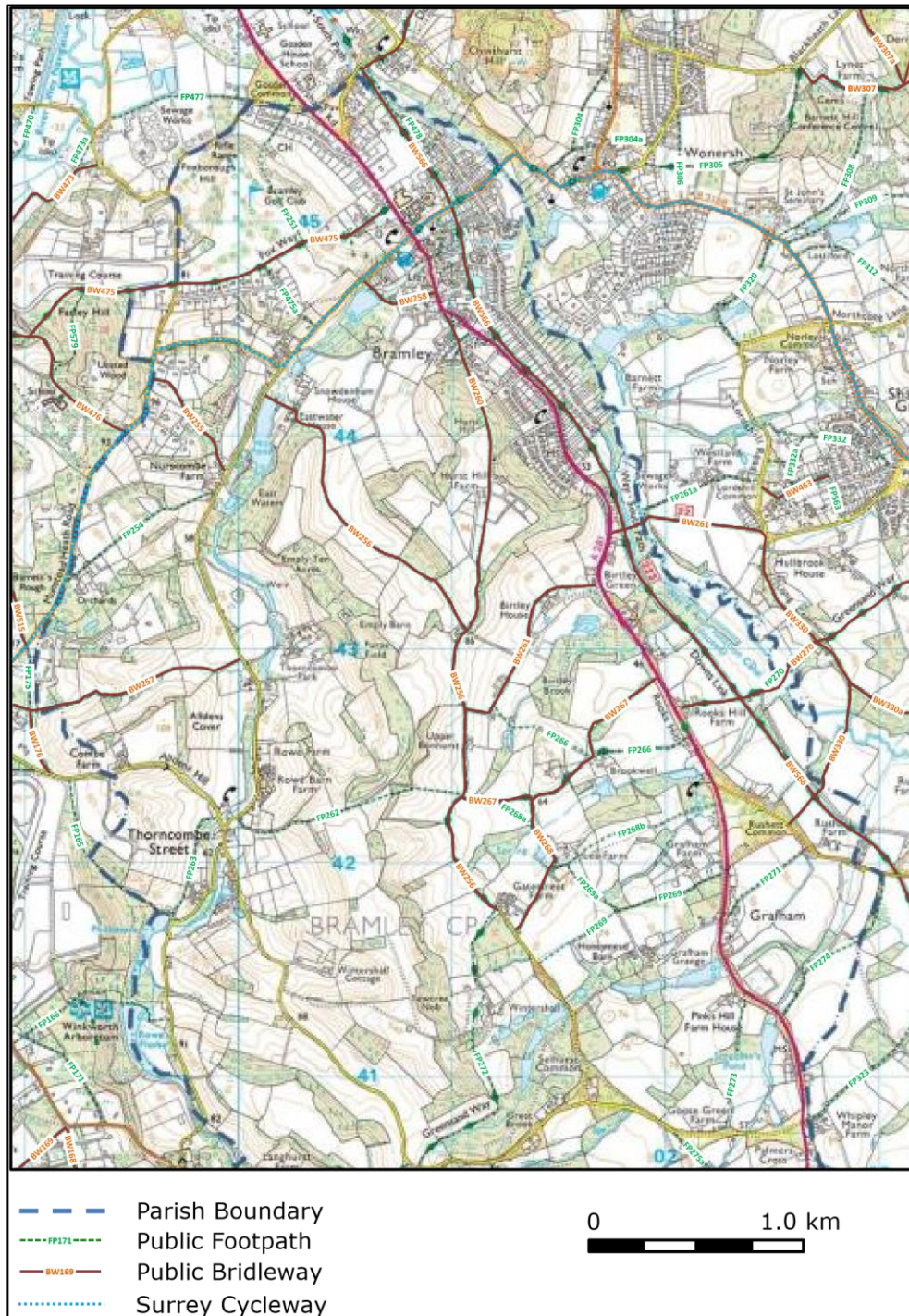


Figure M5.1: Bramley Parish – Public Rights of Way – Northern Sheet



5.2 Figure M5.2 is a map showing the southern part of the parish with fewer rights of way but a network of bridleways and footpaths where the parish abuts Hascombe Civil Parish.

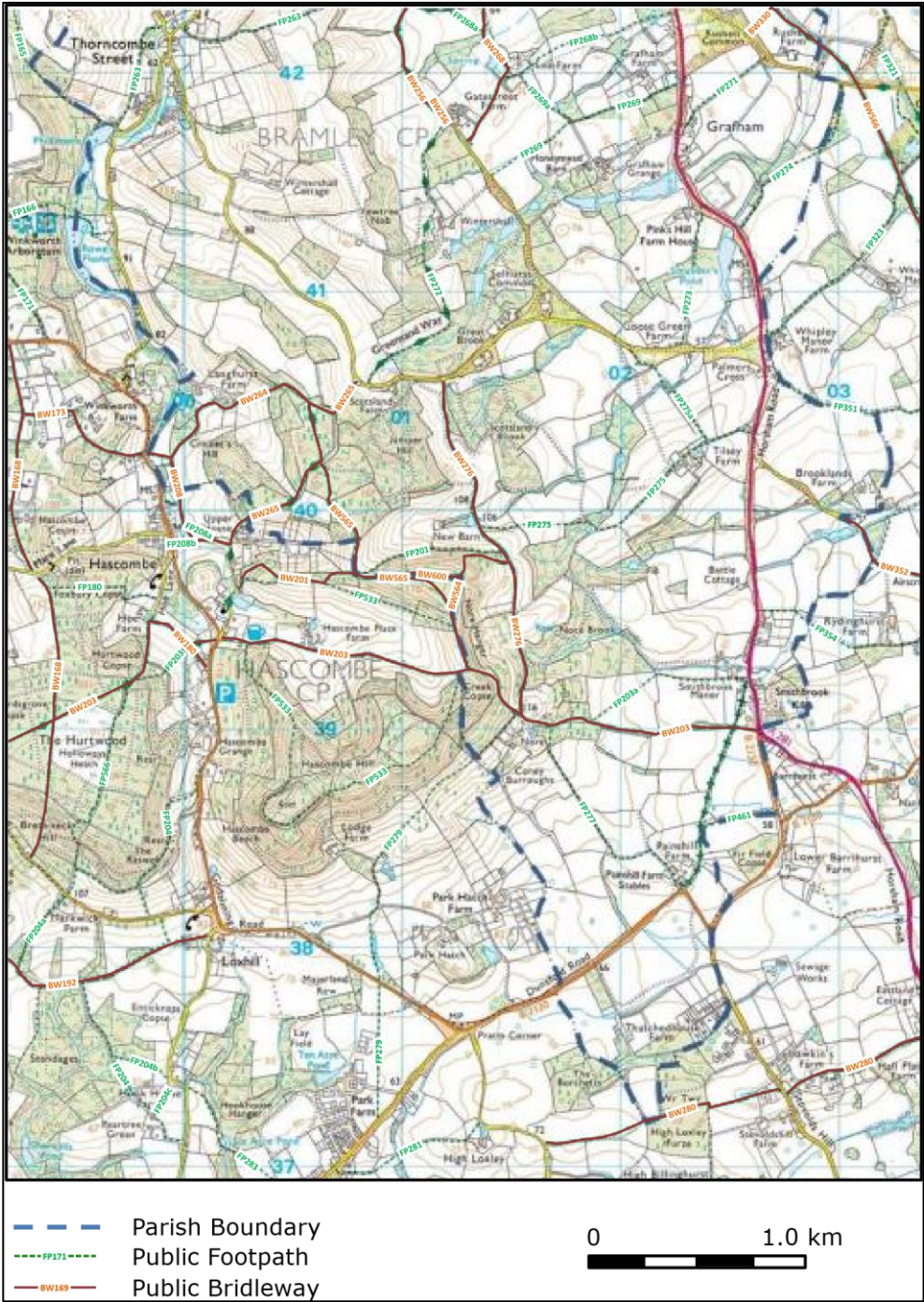


Figure M5.2: Bramley Parish – Public Rights of Way – Southern Sheet

## 6

## 6.1



1



Figure M6.1: The Bramley Conservation Area

Birtley Green, Bramley Conservation Area was designated in 1989.

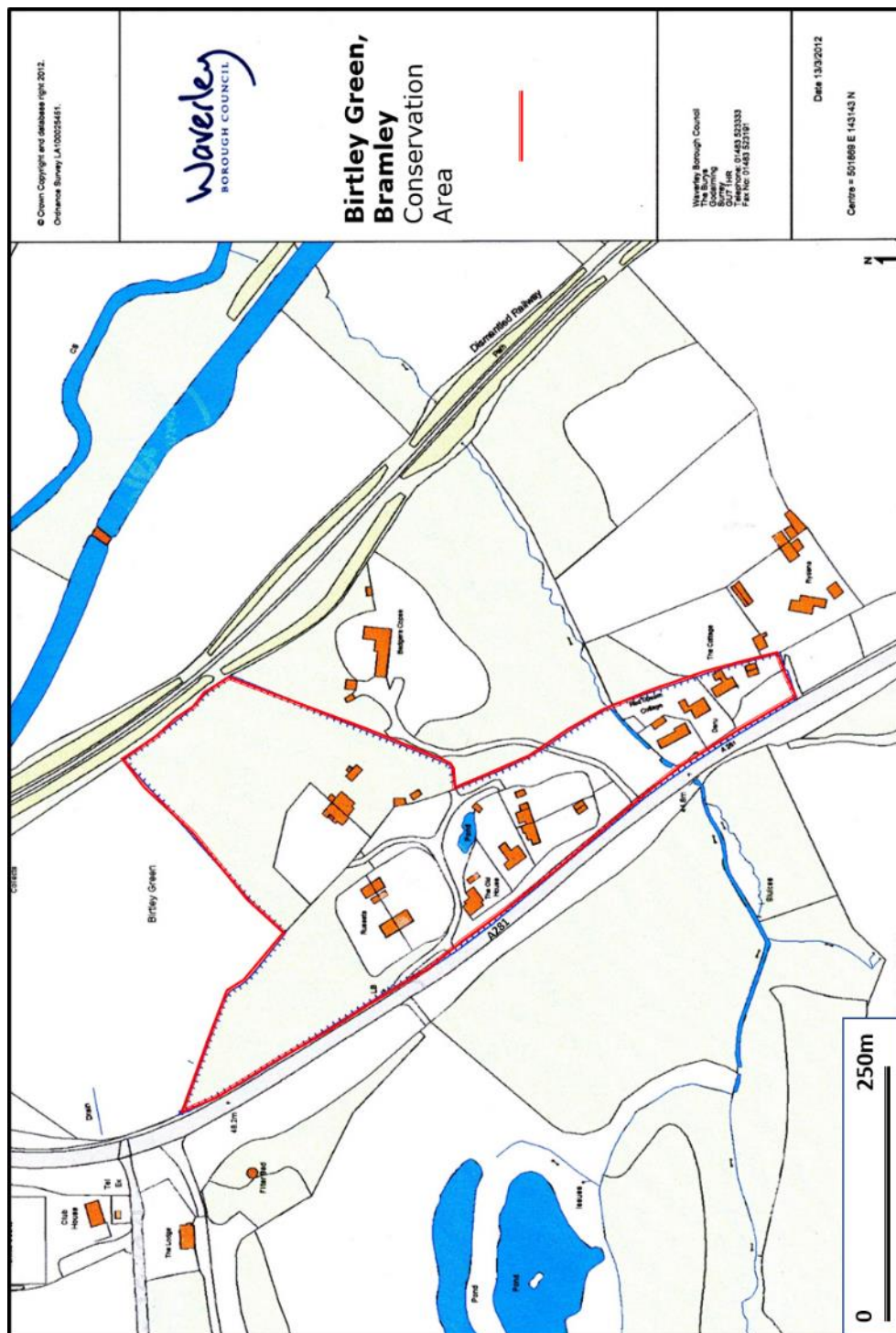


Figure M6.2: The Birtley Green, Bramley Conservation Area

The Thorncombe Street, Bramley Conservation Area was designated in 1982.

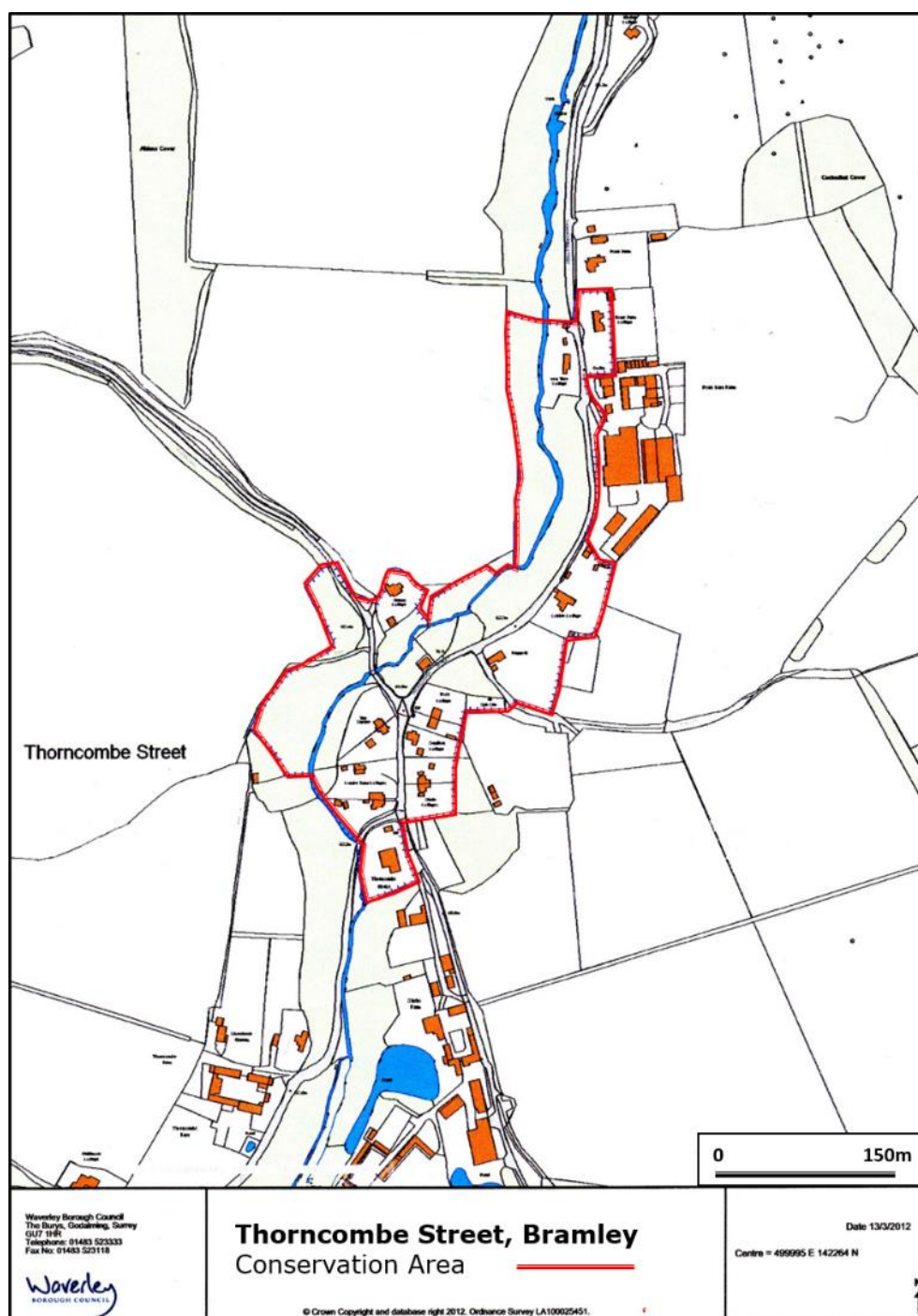


Figure M6.3: The Thorncombe Street, Bramley Conservation Area