

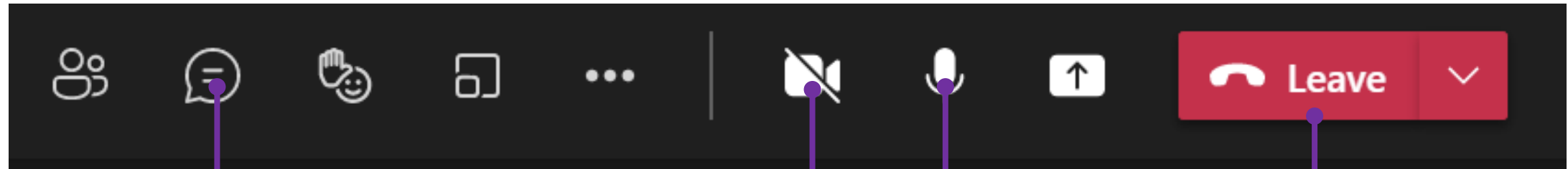
HS2

The design journey of HS2 Phase 2a



Monday 28 February 2022

Microsoft Teams Meetings



Click to view and
submit questions to
the team

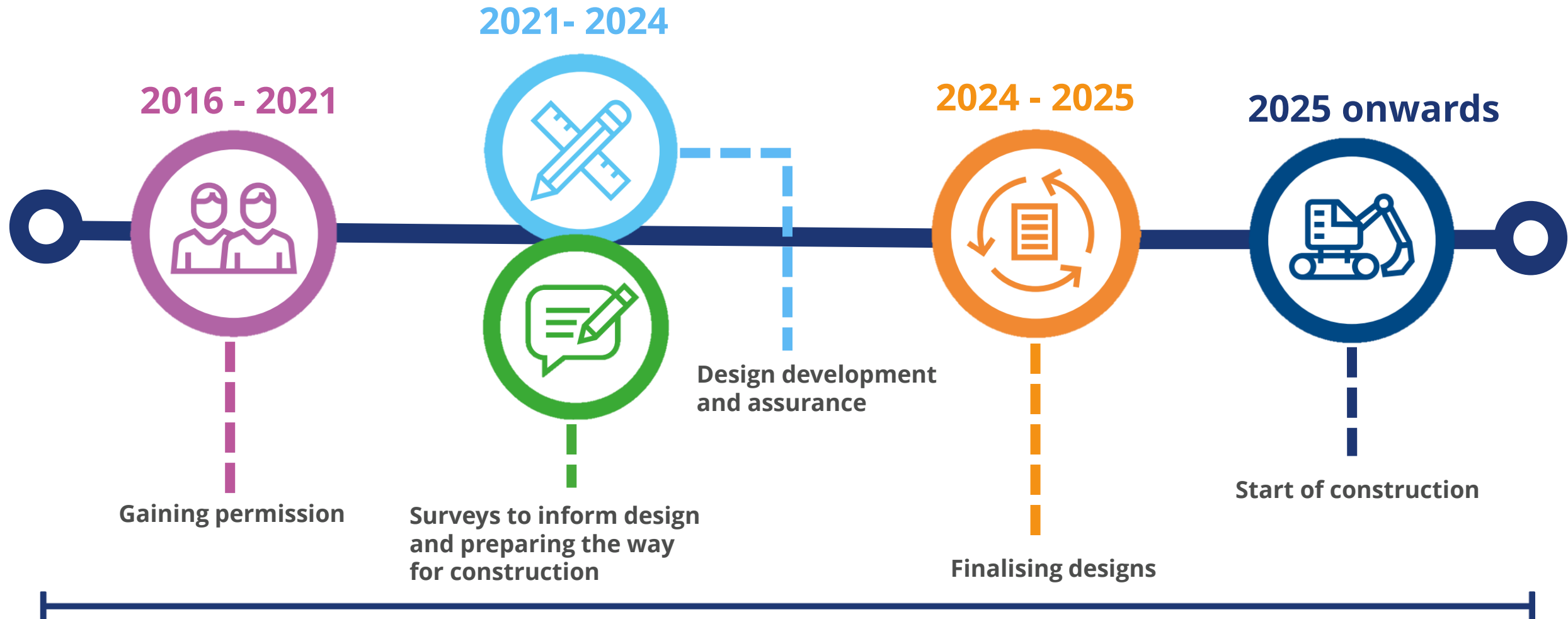
Your cameras
have been
disabled

All attendees
except
speakers are
muted

End/leave
meeting



The journey to building the railway



2016 - 2021

Gaining permission





Working
Draft

(2016)

Hybrid Bill
Deposit

(2017)

Additional
Provisions 1
and 2

(2017-19)

Royal Assent

(Feb 2021)

S60
Consultation

(2021)

Public Consultations

Phase 2a Working Draft (2016)



- Phase 2a working draft presented environmental information based on the current stage of design.
- Two reports published as a result of consultation feedback.
 - ✓ “HS2 Phase 2a: West Midlands to Crewe design refinement consultation”
 - ✓ “HS2 Phase 2a West Midlands to Crewe: Summary of Route Refinements”

High Speed Rail (West Midlands - Crewe) Bill (2017-2021)



- In July 2017, the Government deposited a hybrid Bill in Parliament to secure the powers to construct and operate HS2 Phase 2a.
- Public consultation on the Environmental Statement and Equality Impact Assessment from July to September 2017.
- A further two periods of public consultation in the form of two Additional Provisions (APs).
 - ✓ AP1 – March to May 2018
 - ✓ AP2 – February to March 2019



S60 Consultation (2021)



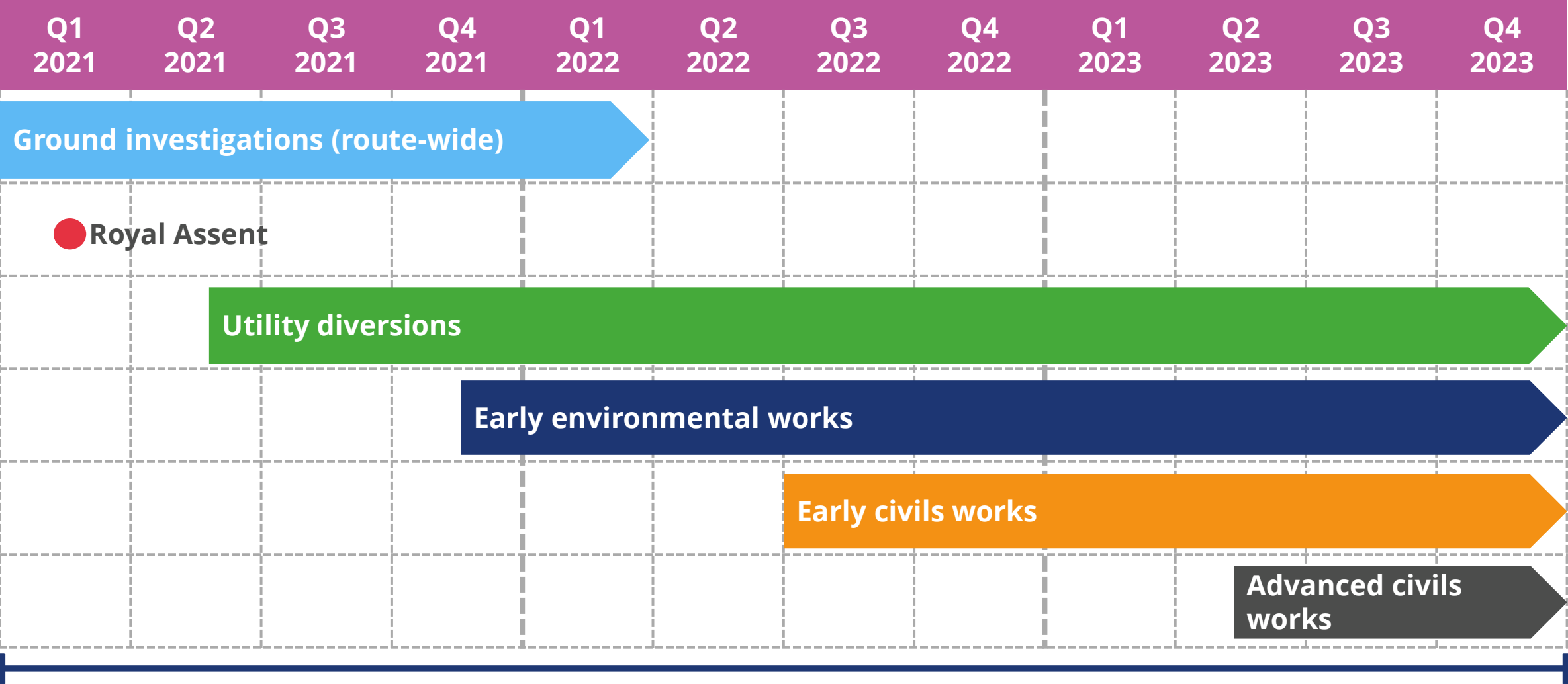
- A key amendment as the Bill was reaching its final stages through Parliament in the House of Lords.
- Focus on the scheme's impact on the general environment, ecology and biodiversity, landscape, and the impact on local communities.
- The public consultations were a valuable exercise in obtaining important information in aiding HS2s task of developing the Phase 2a design.

2021 - 2024

Surveys and preparing the way



Phase 2a preparatory works



Ground Investigations



- Accumulation of information about the ground that will help inform the best way to build the structures we need in the area
- Provides information for the design of roads, tunnels, cuttings and embankments.
- Provides information on the nature and extent of any contaminated land.
- Will confirm locations and depth of utilities and potential utility diversions.



Utility Diversions



- The removal and diversion of existing utility infrastructures that are in the path of construction.
- c.300 required diversions over next 5 years
- Ground investigation, environmental surveys and arkeological investigations are undertaken ahead of any diversion taking place.



Early Environmental Works



- The establishment of new habitats so that they are ready for wildlife to move into when construction starts.
- Teams are working alongside ecological professionals.
- 20% of the total new green infrastructure for Phase 2a will be created at over 80 sites through our early works.
- Ecological surveys inform design of new habitats as well as wider design development.



Early Civils Works



- To ensure local roads are ready for the main construction traffic to use.
- ECW1 works include:
 - ✓ junction improvements at M6 J15/A500 (Hanchurch Interchange).
 - ✓ Wood End Lane/A515 Tewnalls Lane junction improvements.
- ECW2 works include:
 - ✓ the bridge and associated slip roads on M6 at Yarnfield Lane, Stone
 - ✓ road improvement scheme at 21 locations
- Designs expected to be shared later this year with work starting from 2023

Advanced Civils Works



- The possession and securing of land that we need to build the railway.
- Preparing the land so that construction work can start
- Establishing haul roads and site access to reduce traffic on the local road network and ensure safe equipment access to sites.
- c.60km of haul roads will be built.
- This work will start mid 2023



2021 - 2024

Design development and assurance

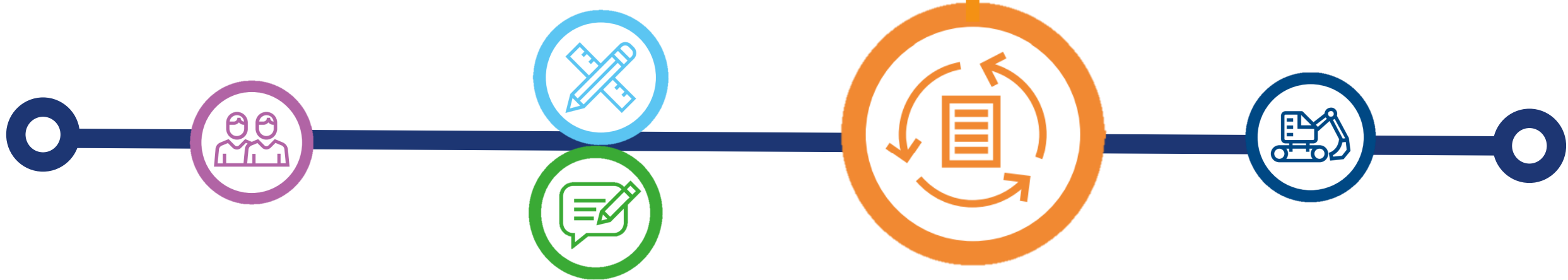


Design development and assurance



- Informed from surveys, the outline design is further developed focusing on the building standards that will be followed and overall approach to building the railway.
- Engagement with affected landowners and those with legal agreements on the design development.
- Design plans submitted to planning authorities to begin the approval process.

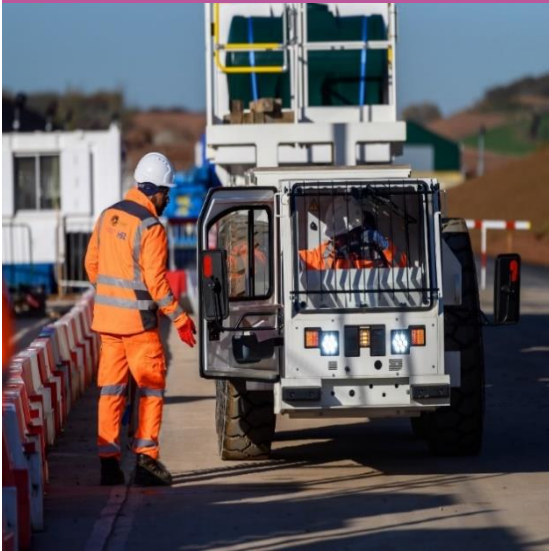
Finalising designs



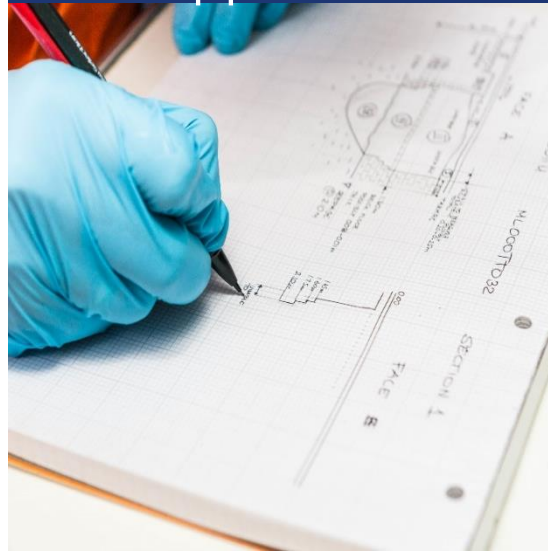
Finalising designs - 2024 - 2025



Construction methods are finalised



Final technical and environmental approvals



Common and key design engagement with public

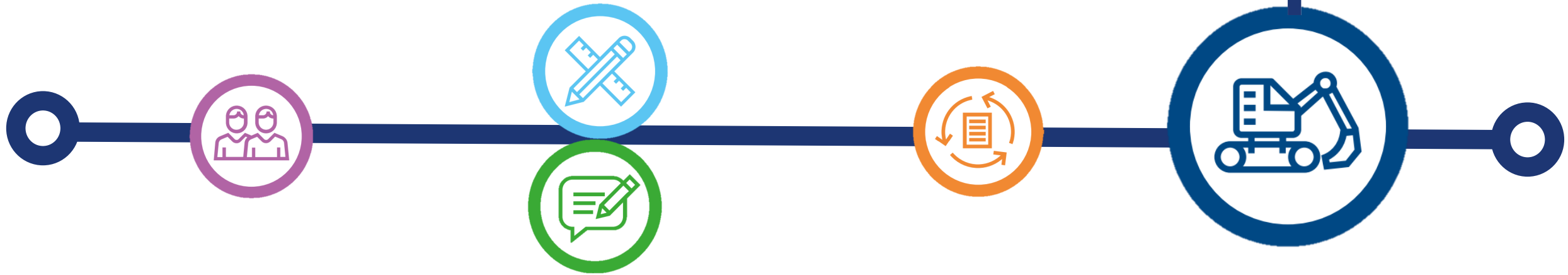


Detailed designs shared with public

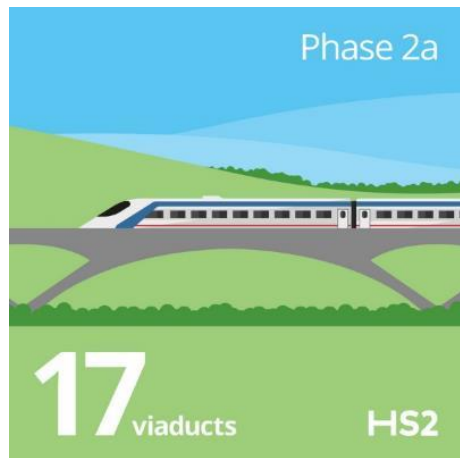
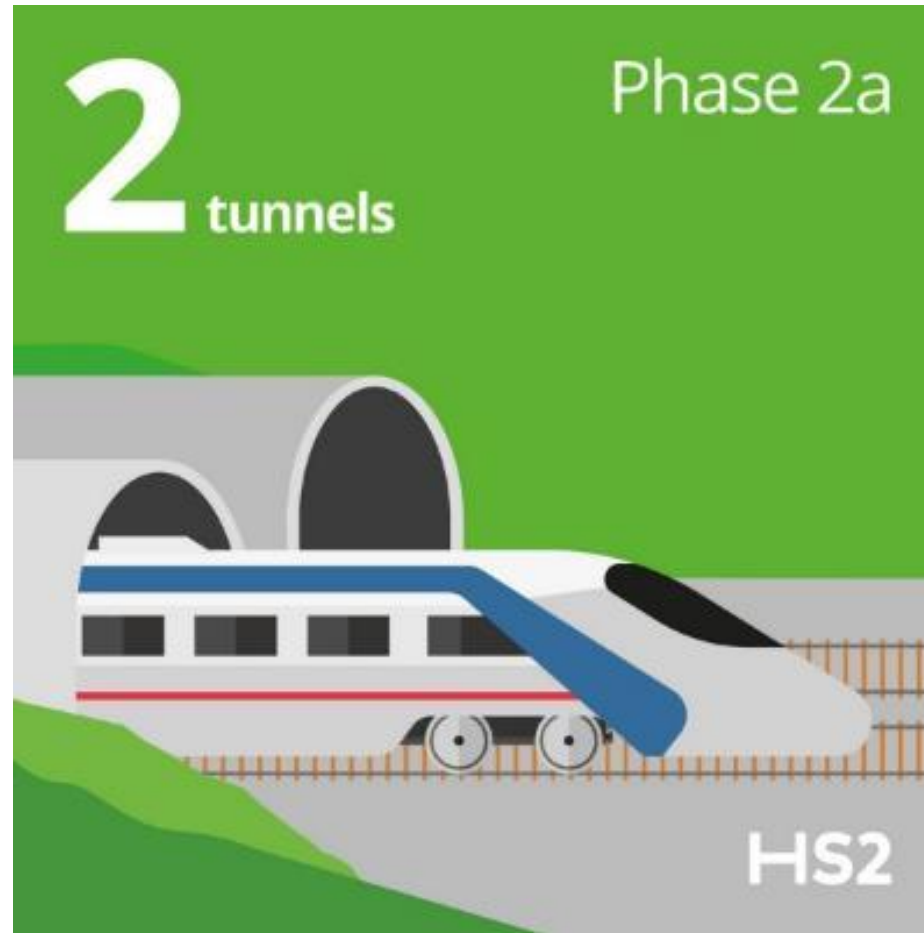


2025 onwards

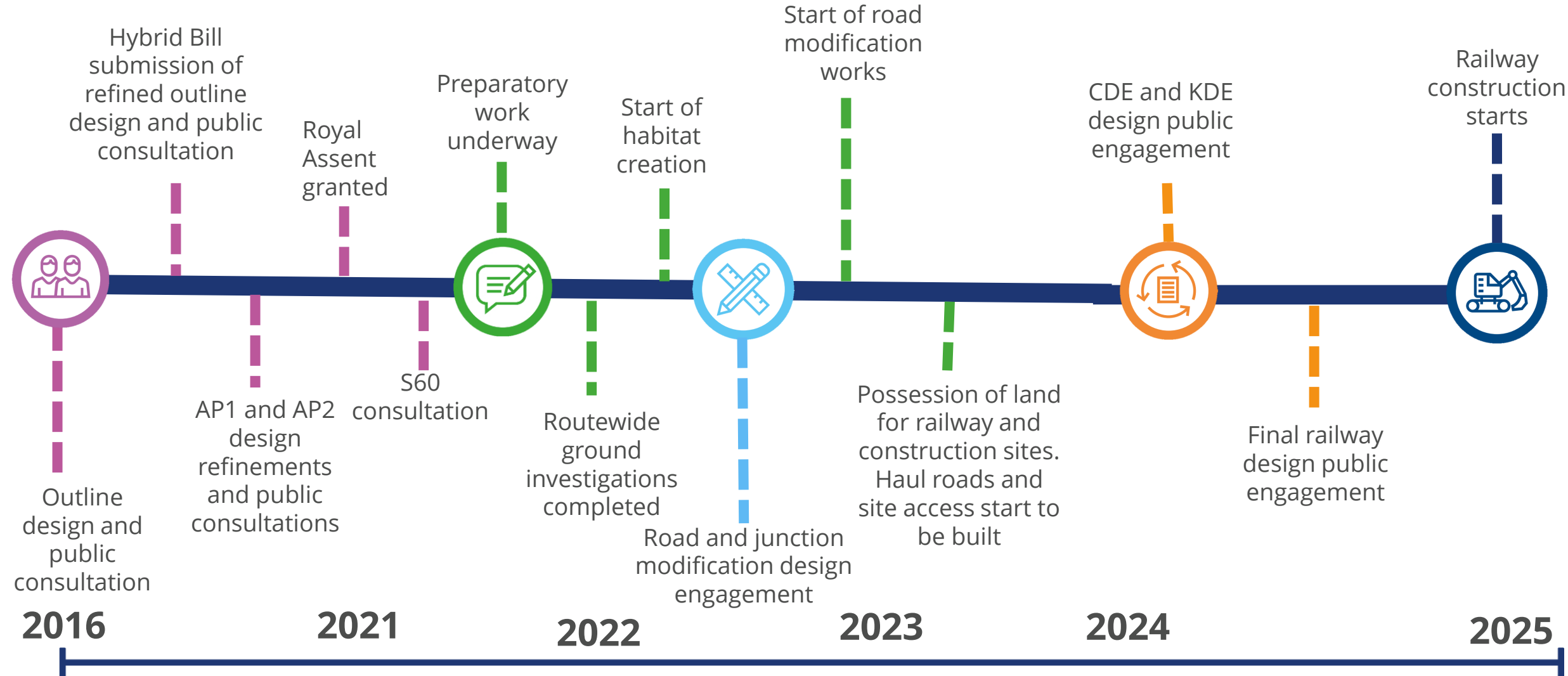
Start of construction



What we are building



Milestones in journey to building the railway



Questions

Panellist:

Joe Wilson – Community Engagement Manager
Caroline Richards – Senior Environment Manager
Harriet Rutledge – Senior Engineering Manager

HS2



Freephone
08081 434 434



Minicom
08081 456 472



Email
hs2enquiries@hs2.org.uk

Thank you for listening



Copyright notice

The copyright for this presentation remains with HS2 Ltd.

It cannot be reproduced as a whole or in part without written permission from HS2 Ltd.

If required, please contact our Corporate Communications Team at corporatecomms@hs2.org.uk.

