

Malherbe Monthly

Number 223
February 2023



The Nu-Venture No 59 bus in Grafty Green. News article in magazine on pages 6 & 7.
Picture courtesy John Collins

Useful contact names and telephone N^{os}.

County Councillor	Shellina Prendergast Shellina.Prendergast@kent.gov.uk	07970 461160
Borough Councillors	Martin Round martinround@maidstone.gov.uk Ziggy Trzebinski ziggytrzebinski@maidstone.gov.uk	890276 078524 92770
Church Wardens	Kenneth Alexander Vanessa Goodwin	859549 858372
Parish Council Clerk	Vickie Ford email boughtonmalherbepc@gmail.com	07791 135248
Village Hall bookings	Jan Carter email janlcarter@btinternet.com	850898
Village Hall General Enquires	Jon Thompson email bromley@ashleylaw.co.uk Mobile 07932 112730	851351
Gardening Club	Sue Burch	850381
Church Choir	Doreen Hulm	850287
Dance Fit	Sharon Harris	890170
Dazzle	Gail Kelly	850671
Yoga	Sue Burch	850381
Parish Council Website	www.boughtonmalherbe.co.uk	
Priest in charge	Dr John Huggins email: vicar@lvb.org.uk	850280
Curate	Charlotte Coles Mobile 07805 092823	
Pilates	Cheryl Stubbs email: c.stubbs8@btinternet.com	07852 602369
Art Class	Cathy Hill email: cathyonthehill@hotmail.com	07927 045708
Benefice Office	Sarah Hills email: churchoffice@lvb.org.uk Answer phone available out of hours	850604
St. Edmunds Centre	Kate Stansfield Mobile 07500 895831	
Fresh Fish delivery	Tuesday at approx. 3pm by Post Office	07976 435217
Malherbe Monthly Production Team		
Mike Hitchins	Advertising: mfhitchins@btinternet.com	858937
Mike Hitchins	Editor: mfhitchins@btinternet.com	858937
John Collins	Treasurer	850213

The views expressed in "Malherbe Monthly" are not necessarily those of the Production Team; publication of articles/adverts does not constitute endorsement and we reserve the right to edit!

Anything for the **March** edition should be left in Grafty Green Telephone Box, or contact Mike on 01622 858937 (mfhitchins@btinternet.com) by **20th February**

News from St. Nicholas Church - February 2023

Seems a long time ago that we celebrated Christmas and New Year, but a small reminder of the final church events of 2022. The Crib Service on Christmas Eve was so special, as we celebrated with many friends from around the benefice, parents, grandparents, toddlers, babies, schoolchildren, and even a few well-behaved dogs! So many that we ran out of order-of-service sheets in the first few minutes. Must mention the splendid acting, telling the story of the events in the stable in Bethlehem from the point of view of the animals. John, Angela and Peter really threw themselves into the storyline and are already gearing up for an equally impressive performance next year!

A truly family occasion to appreciate the true story of Christ's birth with joy.

St. Nicholas, patron saint of children and the original Santa Claus, (Father Christmas), must have smiled.

Reminders

The church porch is open at all times and has a refreshment table to make hot drinks and relax, especially if you have walked up the hill or need some shelter from the wintry weather.

The mini-foodbank box is under the table. Please use it if you need to, or add to it when you visit. A more extensive food bank is at the back of St. Mary's church in Lenham.

The main church building is only open for services, cleaning etc. but a key can be obtained at any time from one of the churchwardens. Their details are elsewhere in the magazine or on the church noticeboard in the porch.

Celtic Morning Prayers are said in the side chapel each Monday 9.00-9.30am. Please contact Rev. John Huggins, Rev. Charlotte Coles or the churchwardens at any time if you have any prayer requests. Prayers will be said in Morning Prayer time or in private if you wish.

Information

Village Coffee Morning takes place every Tuesday in the village hall in Grafty Green from 11-2pm. This coincides with the Pop-up Post Office, 12-45-2.15pm and most weeks there will be various stalls, Hillary for organic meats, Esther for very special locally produced cosmetics, Corinne with her local honey, the church eco-shop with household cleaning products, as well as Sylvia's homemade jams and Sally's marmalade and lemon curd. For precise details each week see the blackboard outside the hall. Of course, you can also enjoy the cakes and biscuits on offer! Any donations will go, half to the church and the rest to a charity chosen by the coffee morning visitors. This month £150 have been given to the Aspire group of local primary schools, which includes Platts Heath and Ulcombe.

The pile of knitted squares for blankets is growing apace. Any wool/yarn is welcome, so please scour your cupboards or charity shops. Jacqui, Angela, Liz and Sally(C) are setting the pace.

The new Craft venture in the hall is looking exciting. Janice is the driving force and we much enjoyed the first get-together on Friday 20th January. Four spinning wheels were produced and thanks to John two were able to be used. A new skill for us. Janice has arranged for future dates, each Friday morning 10-12noon. She hopes others will join, bringing their own craft projects and be able to experience and learn from each other.

Lent begins at the end of February. There are plans to again provide Lent lunches each week for 4/5 weeks through March and in the run-up to Easter. Details as to time and place have yet to be finalised, so keep an eye on the village hall and church noticeboards and at the coffee mornings for more information.

Finale

Started joining the knitted blanket squares last night. Have a big confession to make, the young spaniel retrieved one this morning!! Obviously treasured it and hid it! (needs some repair now!)

Perhaps she's reminding us of a need perhaps for warmth for a homeless person and their dog. Will be checking where there is most need for blankets, this winter weather shows no sign of easing. Keep warm!

Sally Alexander



The advertisement is enclosed in a black rectangular border. On the left side, there is a large, stylized brown icon of a light fixture with a conical shade and a single bulb hanging from it. To the right of this icon, the text 'Plummer Electrical Service' is written in a large, bold, brown serif font. Below this, in a smaller brown serif font, is 'Call James Plummer'. At the bottom, the phone number '07912344510' is displayed in a very large, bold, brown sans-serif font. In the top right corner, there is a small rectangular logo with a red and black design, containing the text 'NICE' and 'DOMESTIC INSTALLER' with a small house icon. To the right of the main text, under the heading 'Your Local Reliable Electrician Offering' (in a brown sans-serif font), there is a bulleted list of services: 'Emergency Call Outs', 'Fault Finding', 'Electrical Maintenance', 'Rewires', and 'And More'.

**Plummer
Electrical
Service**

Call James Plummer

07912344510

NICE
DOMESTIC
INSTALLER

**Your Local Reliable
Electrician Offering**

- Emergency Call Outs
- Fault Finding
- Electrical Maintenance
- Rewires
- And More

**Boughton Malherbe
Parish Council
Contact Details**

Ron Galton, Chairman

- Tel: 01622 850369

(Finance, Planning, KALC)

ron@boughtonmalherbepc.org

Robert Turner

Tel: 01622 850325

(Finance, Planning, KALC)

robert@boughtonmalherbepc.org

Barry Adams

Tel: 01622 850288

barr313@btinternet.com

Nick Eastwood

Tel: 01622 850330

nicholas.eastwood.bmpc@gmail.com

Vickie Ford, Parish Clerk

- Tel: 07791 135248

boughtonmalherbepc@gmail.com

Chiroprody
& Podiatry

Heather's

Registered Surgical Chiroprapist / Podiatrist
Established for Over 25 Years
Member of The Association of Chiropracists & Podiatrists
HCPC Registered G.C.S.Ch., M.Inst.Ch.P., M.F.S.Ch.



- Treatments & Consultations
- Children's Chiroprody
- Corns, Callouses & Hard Skin Removal
- Diabetic Foot Care
- Fungal Treatment
- Ingrowing Toe Nails / Toe Nail Problems
- Verruca Treatment

01622 850376

www.heatherschiroprody.co.uk
retreat@heatherschiroprody.co.uk

The Brown Barn, Bull Hill, Lenham Heath, Kent, ME17 2JA (Off the A20)



STONEBRIDGE ACCOUNTING
ACCOUNTS AND TAX SUPPORT
FOR THE SELF EMPLOYED AND SMALL BUSINESS
Tel: 01622 851542

59 BUS NEWS

As part of KCC's cost cutting measures, their financial support for almost forty bus services across the county will cease on 11th February, and the 59 service is one of those that KCC will no longer support.

A meeting chaired by Boughton Malherbe Parish Council has already been held with representatives from other parishes along the route and the current operator, Nu-venture, to discuss options for the continued provision of a bus service after the subsidy ends and ways of financing it, and this work is continuing.

In the meantime, Nu-venture has offered to continue to operate a once-a-week shopper's service on Wednesdays on a trial basis starting from 15th February, and is proposing to run this until July. It will run via Ulcombe, Kingswood, Chart Sutton, and Boughton Monchelsea, just as it did before last year's lengthy closure of Ulcombe Hill for South East Water work, and will go direct to and from Maidstone Town Centre. Ulcombe Hill is due to be closed again from 6th to 17th February, so on 15th February Grafty Green and Ulcombe cannot be served.

From 22nd February and on subsequent Wednesdays, departure from Grafty Green will be at **09.37**, due to arrive in Maidstone, King Street, at 10.33.

The return service from Maidstone, King Street (Stop L2, close to Greggs), departs at **13.00**, due to arrive at Grafty Green at 13.52.

This is a trial so it is absolutely vital that the service is used, both to demonstrate a continuing need for a bus service, and to support any case for financial support.

The phrase **'USE IT OR YOU REALLY WILL LOSE IT'** has never been truer!

John Collins

Sadly, Kent County Council funding for the Mondays to Saturdays daytime bus 59 ceases from 11 February 2023. Contact ARRIVA for details of school-time buses.

Until July 2023, Nu-Venture will continue to operate a limited replacement daytime service on Wednesdays as shown below.

Please - use it or lose it! Continuation beyond July 2023 will be dependent on the amount of usage shown in the coming months.

Wednesdays only - starts 15 February 2023

Code	W
Nu-Venture bus service number	59
GRAFTY GREEN Kings Head	0937
Ulcombe near Chestnut Close	0944
KINGSWOOD Village Hall	0952
Kingswood Chestnut Drive	0954
Warmlake Corner	0959
Chart Sutton opp Chart Corner	1002
Boughton Monchelsea opp The Cock Inn	1006
Boughton Monchelsea Albion	1008
Linton Corner	1013
Old Loose Hill	1017
The Wheatsheaf	1023
MAIDSTONE King Street	1033

Code	W
Nu-Venture bus service number	59
MAIDSTONE King St BUS STOP L2	1300
Boughton Monchelsea Albion	1322
Boughton Monchelsea The Cock Inn	1325
Chart Sutton Chart Corner	1328
Warmlake Corner Chartway Street	1331
Kingswood opp Chestnut Drive	1338
KINGSWOOD opp Village Hall	1340
Ulcombe opp School	1347
GRAFTY GREEN	1354

Route - as current Bus 59

GRAFTY GREEN - Ulcombe - KINGSWOOD - Chart Sutton - Boughton Monchelsea - Maidstone

Code W = Wednesdays only - No service on other days. NO service on Bank Holidays

Buses serve all bus stops on line of route. Please give a clear hand-signal to the driver when boarding.

Pay on the bus with cash or card. Single and return fares available for all journeys.

We welcome the English National Concessionary Travel Pass.

Village Hall News – February Newsletter

We will be hosting the following events at the hall this spring:-

Pancake evening on Tuesday 21st February 4pm to 7pm

Once again we will be hosting our pancake evening. We will be offering a selection of sweet and savoury pancakes together with the usual refreshments so please come along and enjoy a delicious pancake and spend some time over a cup of tea with friends. As well as the pancakes there will be activities to keep the children entertained.

Flicks in the Sticks Presents Blazing Saddles Friday 17th March at 7pm

Following a great suggestion made by a member of the village at the welcome back event we will be hosting our first film night at the hall. Having canvassed opinion, we have decided to show the classic comedy Blazing Saddles. There will be complementary popcorn and light refreshments. Tickets are £5 per person and can be obtained from myself on 07932 112730 or by emailing bromley@ashleylaw.co.uk

60's/70's Music Night and Meal on Saturday 22nd April – doors open at 7pm

Dougal & the Blue Cats will be performing live for us at our 60's/70's Night. There will be a complementary glass of fizz on arrival, a three-course themed meal and a fancy dress competition, so dust off those platforms, flairs and tank tops and get ready to boogie! There will be a pay bar and tickets are £15 per person and can be ordered from myself, (for contact details see above).

Spring Craft Fair Sunday 2nd April 10 am to 2pm

We will also be hosting our spring craft fair at the hall on Sunday 2nd of April where you can browse a selection of stalls offering a wide range of interesting crafted items, have a chat with friends and enjoy a cup of tea and some cake. There will be a wide range of stall holders including beauty products, bags and lots of gift ideas. There will also be an Easter Egg hunt for the children. Any donations of cake will be very welcome and we look forward to seeing you on the day.

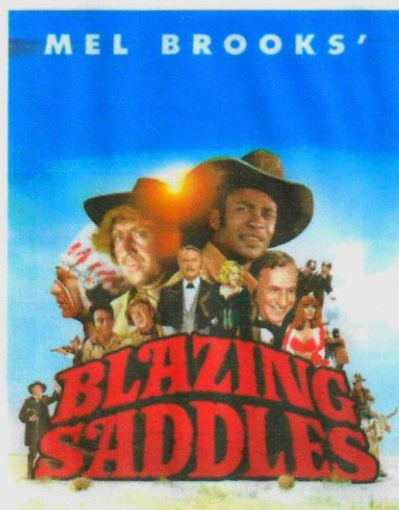
Jon Thompson Hall Committee Chairman

bromley@ashleylaw.co.uk

www.graftygreenvillagehall.co.uk

Facebook – [graftygreenvillage](https://www.facebook.com/graftygreenvillage)

FLICKS IN THE STICKS
PRESENTS
BLAZING SADDLES



GRAFTY GREEN VILLAGE HALL
FRIDAY 17TH MARCH 7PM
TICKETS £5 CALL JON
THOMPSON ON 07932112730

GRAFTY GREEN VILLAGE HALL
PANCAKE EVENING



TUESDAY 21st FEBRUARY
4PM TO 7PM
VILLAGE HALL
COME AND MEET YOUR FRIENDS
SWEET & SAVORY PANCAKES £2 EACH

60s / 70s Music Night & Meal.

Grafty Green Village Hall Sat 22 April



live music from Dougal & the Blue Cats

Doors open 7.00 pm meal from 7.30 pm

Music from 8.30 fancy dress optional!

Tickets: £15 from Jon Thompson

07932 112730 or bromley@ashleylaw.co.uk

News from your KCC Member for Maidstone Rural East

Rather late in the day but I'd like to start by wishing you all the very best for 2023.

2022 was undoubtedly a difficult year for many of us and there is little doubt that many more challenges lay ahead – the cost-of-living crisis continues to bite residents and businesses, inflation remains high and global issues such as the invasion of Ukraine have had a huge impact on us all – including local government.

Whilst KCC received a better than anticipated financial settlement from the government last autumn the reality is that this simply isn't going to be enough to keep pace with the rising demand and costs that are needed to deliver services – especially when it comes to the most vulnerable amongst us. KCC's draft budget for 2023/24 -

https://www.kent.gov.uk/data/assets/pdf_file/0006/143871/draft-budget-report-2023-2034-including-appendices-A-K.pdf will be considered by Members at our Budget County Council meeting on 9th February and will stimulate a lot of debate around some really difficult decisions that will have to be made so KCC can continue to deliver services in the most sustainable and effective way.

As part of these challenges, KCC has had to look ahead and plan for how things can be done differently and still maintain an effective level of support for residents who need it. One of the proposals under consideration is looking at changes in the way buildings are used to deliver some of the community services – ranging from children's centres and youth hubs, public health services for children and families, community services for adults with learning difficulties, the adult education offer and Gateways.

The Community Services consultation -

<https://letstalk.kent.gov.uk/community-services-consultation> outlining these proposals was launched last week and any help you can provide in encouraging residents to have their say before it closes on 26th March would be really good. I know it's a hefty document to read – as one or two of you have already pointed out to me - but there are ways of navigating to

information at relevant district/ward level and there's also a list of drop-in sessions where people can find out more and ask any questions.

Finally, here is a link <https://us8.campaign-archive.com/?u=7efcd0bedbc1757eb8a93cce4&id=8f3a65bf21> - to the latest edition of the e-newsletter which goes out on a regular basis to those who have subscribed to receive it directly into their inbox. It contains information about the Community Services consultation amongst other things and, as ever, I would be grateful if you could share widely including on parish websites, magazines and social media.

I'm hoping to provide more regular – and localised – updates as we go through this year but I think you all know me well enough by now to know that I'm always at the end of an email or telephone to help with any issues you may have. And that I **never** find it easy to turn down a challenge when it comes to doing the right thing for the communities within Maidstone Rural East.

Shellina Prendergast

Cabinet Member for Communications and People
KCC Member for Maidstone Rural East

Helen Whately

MP for Faversham and Mid Kent

I work for you. If you have a problem you think I can help you with, please contact me or visit me at one of my surgeries

House of Commons,
London, SW1A 0AA

www.helenwhately.org.uk

Tel: 020 7219 6472; Email: helen.whately.mp@parliament.uk

Do you enjoy your photography?

Would you like to improve your skills?

Then why not join Maidstone Camera Club and share your enjoyment with other members. We have an interesting programme throughout the season which suits both beginners and the more experienced alike.

It doesn't matter whether you use a mobile phone camera or a conventional digital camera, it is the images which are important. Our members like to talk about photography and learn from each other.

- Talks by visiting experts on prints and digital images
- Competitions for prints and digital images
- Hands on practical evenings with demonstrations
- Special interest groups

Come along to one of our meetings which are held at the Civil Service Social Club, Recreation Close, Maidstone, ME14 5AZ on Tuesday evenings during the season (September – May) 7.30 p.m. – 10.00 p.m. or contact us as below. You will be made to feel very welcome.



www.maidstonecameraclub.org.uk

Peter Brook on 07828 133508
Ben Kirby on 07706 051137

Boughton Malherbe Parish Council



boughtonmalherbepc@gmail.com

**Rill House
The Street
Ulcombe
Maidstone
ME17 1DR**

NOTICE OF CASUAL VACANCY

NOTICE IS HEREBY GIVEN that due to the resignation of Grant Kennaird, a vacancy has arisen in the Office of Councillor for the Parish Council.

If by 15th February 2023 (14 days excluding weekends and bank holidays, after the date of this notice) a request for an election to fill the vacancy is made in writing to:

The Proper Officer
Maidstone Borough Council
Maidstone House, King Street
Maidstone, Kent
ME15 6JQ

By TEN electors for the Parish, an election will be held to fill the vacancy, otherwise the vacancy will be filled by co-option.

Dated: 26th January 2023

.....*US/Mod*.....

Clerk to the Parish Council



Boughton Malherbe Parish Council

www.boughtonmalherbe.co.uk

Minutes of a Planning Committee Meeting held in the village hall at 7.00pm on Monday 16th January 2023

Present: Cllrs B Adams; N Eastwood; R Galton; G Kennaird (Chair); R Turner
Clerk: Mrs Vickie Ford

Cllr Kennaird opened the meeting at 7:03 pm

1. **Declaration of anybody filming/recording this meeting** – none
2. **Apologies for Absence** – none
3. **Declarations:**
 - (i) **Declarations of Interest in items on the Agenda** – Cllr Turner declared that he would not be voting on item 5.(ii) as it related to his previous residence
 - (ii) **Declarations of Lobbying** – none
4. **Approval of Minutes of the Planning Meeting on 28th November 2022** – approved and signed as a true and accurate record
5. **Planning Applications:**
 - (i) **Public Session** – no members of public present: no public session
 - (ii) **22/505604/LBC**

PROPOSAL: Listed Building Consent for internal and external alterations including replacement of 2no. triple casement windows with French doors, removal of oil fired boiler, modern studwork partition and door and installation of air source heat pump
ADDRESS: Offens Farm, Headcorn Road, Grafty Green, ME17 2AP
RESOLVED: to give a neutral response with no additional comment
 - (iii) **22/505664/LBC**

PROPOSAL: Listed Building Consent for internal alterations for the installation of through floor lift with associated works
ADDRESS: Cherry Tree Cottage, Headcorn Road, Grafty Green, ME17 2AN
Cllr Eastwood stated that the application related to a neighbouring property but, as there were no external alterations proposed, he had no interest to declare.
RESOLVED: to give a neutral response with no additional comment

The Meeting closed at 7:07 pm



Boughton Malherbe Parish Council

www.boughtonmalherbe.co.uk

MINUTES OF A MEETING of the FINANCE and STAFFING COMMITTEE of BOUGHTON MALHERBE PARISH COUNCIL held at 7:15 pm on Monday 16th January 2023 in Grafty Green Village Hall

Present: Cllrs: B Adams; N Eastwood; R Galton; G Kennaird; R. Turner (Chair)
Clerk: Mrs Vickie Ford

Cllr Turner opened the Meeting at 7:15 pm.

1. **Declaration of anybody filming/recording this meeting** – none
2. **Apologies for Absence** – none
3. **Declarations:**
 - (i) **Declarations of Interest in items on the Agenda** – none
 - (ii) **Declarations of Lobbying** – none
4. **Approval of Minutes of the Finance and Staffing Committee Meeting held on 7th November 2022** – approved and signed as a true and accurate record
5. **Parish Council Staffing –**
 - (i) **Clerk's Working Hours**

At the request of the Staffing and Finance Committee (minute ref 4, 7.11.22), the Clerk had made a record of her working hours and had presented a report to Committee members. It was noted that the Clerk was working a mean average of 10.4 hours per week.
 - (ii) **Annual Pay Increase (Clerk)**

RESOLVED: to exclude the press and public under subsection (2) of the Public Bodies (Admission to Meetings) Act 1960 for the following item on the grounds that it concerned the Clerk's terms of employment.

The Clerk also left the meeting temporarily.

RESOLVED: to recommend to Full Council £1 per hour increase in Clerk's salary 2022/23, in line with NJC pay scales.

The Clerk re-joined the meeting.

The Committee expressed its concern regarding the hours being worked by the Clerk and asked that she continue to maintain a record, which she agreed to do.
6. **Review of Revised Draft 2023/24 Budget and 2023/24 Precept**

The Chairman summarised the letter received from Maidstone Borough Council, which gave details of the provisional tax base for 2023/24: maintaining the present Band D equivalent charge of £27.84 per household per annum would generate a

precept of £7,113; maintaining the 2022/23 precept of £7,005 would decrease the charge per household per annum by 42p.

The Chairman stated that the Parish Council had resolved to earmark the remaining Quinn donation money (£52,899.38) for the potential purchase of the Village Green for 12 months and proposed that the funds be earmarked for a further year. Cllr Eastwood stated that he would not support earmarking the funds for a further year on the basis that no approach towards permanent acquisition of the Village Green had been proposed to Council. The Clerk undertook to investigate.

The Clerk gave an update on the situation regarding the 59 bus service: maintenance of a bus service through the Parish from July 2023 would be dependent on financial support from the Parish Council but it may be possible to apply for a grant from Kent County Council, eligibility to be confirmed.

RESOLVED: to recommend the revised draft budget to the Full Council, subject to maintaining the existing charge per Band D equivalent household per annum with the additional £108 allocated to "contingency".

RESOLVED: to recommend setting a precept of £7,113 to the Full Council.

7. **Internal Audit Review**

RESOLVED: to accept the review of the effectiveness of the internal audit 2021/22, as presented by the Clerk.

8. **Internal Audit Plan**

RESOLVED: to adopt the internal audit plan 2022/23 as presented by the Clerk.

9. **Review of Terms of Reference for the Finance and Staffing Committee**

RESOLVED: to recommend to Full Council as presented by the Clerk, subject to paragraph 7 being amended to read:

"Terms of Reference

The Committee may review the Terms of Reference of the Finance and Staffing Committee and make appropriate recommendations to Full Council."

The meeting closed at 8.10 pm

	Budget 2021/22	Budget 2022/23	Actual to 31.12.22	Forecast to 31.3.23	Draft budget 2023/24
	£	£	£	£	£
RECEIPTS					
Precept	5,731	7,005	7,005	7,005	7,113
Parish Services Scheme	409	327	327	327	327
Bank interest			226	276	300
Misc					
VAT Refund	200	150	-	677	-
TOTAL RECEIPTS	6,340	7,482	7,558	8,285	7,740
Balance brought forward from previous year			85,966	85,966	22,844
PAYMENTS					
Staff Costs - Clerk's Salary	2,498	4,196	3,079	4,470	4,700
Other Costs					
Village Green Maintenance:	500	500			
Grass etc			203	500	500
Trees			1,175	1,175	900
Fencing			-	200	500
Village Hall Hire	250	250	-	250	250
Christmas Tree	300	300	240	300	350
Christmas functions	300	-	-	-	400
Litter Collection/lengthsman	100	-	424	600	800
PRoW replacement gates	-	-	792	2,000	2,600
Community grants:					
Churchyard Maintenance	500	500	-	500	500
Platinum Jubilee event	-	-	793	793	-
Village Hall Centenary celebration	-	-	500	500	-
Air Ambulance			50	50	50
Community Grants e.g. Coronation event					1,000
Emergency Plan		-	-	-	-
Training Courses	300	300	170	300	300
Internal/external Auditor	70	100	90	90	300
Insurance	370	400	489	489	500
KALC Membership	300	300	229	229	250
SLCC membership fees (Clerk)	-	-	120	120	120
Contingency (incl defib spares)	50	-	238	238	408
Chairman's Expenses	50	-	-	-	-
CPRE Membership	36	36	36	36	36
Stationery, postage, admin	200	200	217	500	500
Total Other Costs	3,326	2,886	5,766	8,870	10,264
Repairs Fund contribution	500	-	-	-	-
Village Green Fund	-	400	-	-	-
TOTAL PAYMENTS	6,324	7,482	8,845	13,340	14,964
Ringfenced reserves (CIL)				4,358	
Earmarked reserve (Village Green)				52,899	
Contingencies					
Emergency reserve					7,500
Clerk additional hours				810	2,010
Community bus					5,000
CLOSING BALANCE				22,844	1,110

Grafty Gourmet

This one of those love it or hate it desserts. It's a great and very simple seasonal dessert with its combination of sweet and sour tastes. Serve with custard.

Classic Rhubarb Crumble

For the filling

500g of rhubarb, chopped into chunks the length of your thumb
100g of golden caster sugar
3 tablespoons of port

For the crumble topping

140g of self-rising flour
85g of butter, chilled
50g of light brown muscovado sugar
50g of chopped walnuts

1. Tip the rhubarb into a saucepan with the golden caster sugar and port. Cover and simmer on a very low heat for 15 minutes, adding more sugar if you want. When soft (but still holding its shape) and sweet enough, pour the rhubarb into a medium baking dish. Heat oven to 200C/180C fan.
2. To make the topping, rub the self-rising flour and chilled butter together with your fingers until you have a soft, crumbly topping. Then add the light brown muscovado sugar and the chopped walnuts. Mix together with your hands.
3. Scatter the topping over the rhubarb and bake for 30 minutes or until golden brown on top. Serve piping hot with a thick custard.

HOLLAND & HOLLAND ROOFING **LTD**

Flat Roofing Specialists

"Installers of high performance flat roofing systems"

Our quotes are free of charge and arranged at a time
that's convenient for you

All work is Insurance backed guaranteed

Contact

T: 01622 842 069

M: 07939583618

E: office@hollandandhollandroofing.co.uk

W: www.hollandandhollandroofing.co.uk

Members of the
Confederation of Roofing Contractors (CORC)

ALL FiX **Plumbing & Heating**

CIPHE David Jenkins

ciphe.org.uk
**REGISTERED
PLUMBER**

T: 01622 851186

M: 07914 380521



Bathroom Installations	Tiling
Drains & toilets serviced	Odd jobs
General domestic plumbing	No job too small
Hot water cylinders	Fully insured
Heating and radiators	FREE quotes
Kitchen installations	No call out charges
Repairs and installation	Friendly professional advice
E: info@allfixplumbing.co.uk	W: www.allfixplumbing.co.uk

BARRY WHEBLE **PLUMBING**

Tel: 01622 260568

Mobile: 07768 945705

Blocked Drains, Dripping Taps
Burst Pipes, Boilers
Central Heating, Appliances
Power Flushing

**THE LOCAL PLUMBER YOU'LL
RECOMMEND**

All areas covered
24 Hours / 7 Days
No Call Out Charge

Gas Safe Registered Gas Installer
No: 68640

Ken and Eve Sweet
extend a warm welcome to

The Kings Head **Grafty Green**

A
16th Century
Coaching Inn
haunted by
"Dover Bill" -
the Highwayman!



Traditional Sunday Lunches

Fresh Fish Fridays
Lunches and Suppers

Booking Advisable
01622 850259

Children's Room Beer Garden



Lenham Community Centre, Groom Way

The Railway Children Return

Friday 10th February 2023

Performance begins 19.30, doors open 19.00

Running time 1hr 35 mins

Whatever your age, don't miss the return of Jennie Agutter (this time with the wonderful Sheridan Smith and Tom Courtney) in **The Railway Children Return** (2022), the brilliant follow-up to the 1970s Railway Children film. Jennie Agutter again plays Roberta, now a grandmother, who takes in a group of children evacuated to Yorkshire during WWII. When during a game of hide and seek the children find a wounded American soldier on a train whom they believe is a spy on a secret mission, the scene is set for another first-class enjoyable story. So, take an evening return to see Jennie and the children in action again in this unmissable film. Directed by Morgan Matthews, certificate PG.

Following that on March 10th is **Phantom of the Open**, a heart-warming British comedy telling the remarkable true story of Maurice Flitcroft, a novice golfer who manages to gain entry to the 1976 British Open Golf Championship qualification.

Please get in touch for more information, to join our mailing list or to become a member. **Admission:** members £4, non-members £5 **Annual membership:** £6 (over 16's only)



lenhamfilmclub@gmail.com



www.lenhamfilmclub.org



@lenhamfilmclub

Yoga Classes in Grafty Green Village Hall with Sue Burch

Monday and Thursday mornings at 9.30 and Wednesday evenings at 7
Classes are an hour and a half; approximately 70 minutes of physical practice, 10 minutes breathing techniques, meditation and 10 minutes full relaxation.
Yoga is a mindful practice that enables the practitioner to step back from the busy world – time for ‘you’ - a 90-minute holiday.

New term starts 20th February through to 6th April for a 7-week term £42
To join a class – call 01622 850381 or 07803 962339

Fresh Fish Tuesdays!

For many years now Mel has been delivering a weekly fresh fish selection from Hastings to customers in Grafty Green on Tuesday afternoons between 3 and 3.30 – telephone to book her to call at your house on 07976 435217; a quick and efficient service!

Music Notes for February 2023 – B Hardy

Early February is very busy with a lot of conflicting events and I have picked out two local pantos, both of which fall in the “don’t miss” category as musical and community events. There may be other pantos in Kent which can be found from an internet search, but most of the professional one’s finish at the end of December. So here then is my list:

***Friday 3rd Feb 7.30pm and Sat 4th Feb. 2.30pm and 7.30pm** at Leeds Village Hall, Lower St., Leeds ME17 1RN the Leeds Amateur Dramatic Society’s panto is “Jack, the 7 elves & the beanstalk”. Always very popular, this annual musical event attracts traditional audience participation. Tickets at www.ticketsource.co.uk or from society members.

***Saturday 4th Feb 7.30pm** at Mote Hall, Maidstone, Maidstone Symphony Orchestra’s concert includes Saint-Saens’ *1st Cello Concerto* featuring prizewinning Polish cellist Maciej Kulakowski and Beethoven’s *7th Symphony*. Tickets 033 616 3366(booking fee applies) or at the door.

*Also on **Saturday 4th Feb 2.30-7.30pm** (performance at 6.30pm) Maidstone Singers and Sutton Valence Choral Society offer at St. John's CEP School, Provender Way, Grove Green, ME14 5TZ a "come & sing" event at which participants can join with the choirs in singing popular opera choruses. Tickets (participants or audience): <https://www.suttonvalencechoral.com/other-local-events>

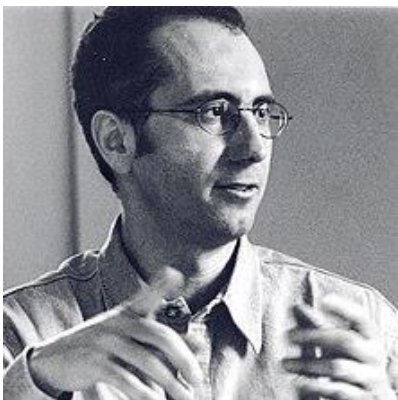
***Sunday 5th Feb 3.00pm** at the Assembly Hall Theatre, Crescent Rd., Tunbridge Wells, TN1 2LU, the Royal Tunbridge Wells Symphony Orchestra's Winter concert includes works by Prokofiev (soloist Isata Kanneh-Mason), Beethoven and Guerra-peixa. Tickets 01892 530613,

***Wednesday 8th Feb – Saturday 11th Feb, 7.30pm** (plus 2.30pm on Saturday) at Hollingbourne Village Hall, ME17 1TR, the Hollingbourne Panto this year is Aladdin (with a modern twist). Highly recommended. Tickets gimberry@btopenworld.com

***Saturday 18th Feb (time tba)** at Etchingham Church, High St. Etchingham, TN19 7US, Cranbrook Choral Society provide a community concert in aid of Hospice in the weald. Tickets & info: tickets@cranbrookchoral.org.uk

Anniversary

An anniversary in February has been difficult to find, but I have chosen the Italian composer Fausto Romitelli who was born on 1 February 1963 in Gorizia. He studied composition at the Milan Conservatory and subsequently took part in courses at the Accademia Musicale Chigiana in Siena with Franco Donatoni and at the Scuola Civica di Milano. He moved to Paris in 1991 where he became a student of Hugues Dufourt and Gérard Grisey. From 1993 to 1995 he was compositeur en recherche at IRCAM.



Romitelli achieved successes in numerous European competitions, and his music has been performed by ensembles such as Berg Orchestra and at festivals such as the Festival d'automne Paris [fr], Musica nova Helsinki [fi], Steirischer Herbst [de] (Graz), Venice Biennale and the Darmstädter Ferienkurse. His video opera *An Index of Metals* (2003) was awarded the Franco Abbiati Prize of Italian music critics in 2004.

He died aged 41 on 27 June 2004 in Milan following a long battle with cancer.

Link Word Puzzle - Answers at the back (don't look first!)

	Find the missing word?
1	_____ Times, Newspaper focused on Business
2	Hank _____, Lead guitarist of 'The Shadows'
3	_____ Eden, Classic James Dean film
4	Take _____ away, Hit track from the film 'Top Gun'
5	The _____ Cross, Humanitarian organisation established in the 19 th century
6	_____ Date, Former TV game show hosted by Cilla Black
7	Gary _____, Late TV chef with spiky hair
8	_____ Ronaldo, Fleet footed Portuguese football star
9	Kirsty _____, Sang with The Pogues on a 'Fairytale of New York'
10	The Great _____, Scott Fitzgerald classic

	Word 1	Word 2	Word 3	Answer
1	Cycle	Launch	Outboard	Motor
2	Boy	Mate	Yard	
3	Court	Gum	String	
4	String	Prize	Bridge	
5	Barrel	Belly	Ginger	
6	Class	Golf	Sandwich	
7	Dead	Prickly	Stroke	
8	Cuff	Golf	Missing	
9	Abiding	Out	Suit	
10	Big	Custard	Toffee	
11	Keeper	Play	Table	
12	Dry	Tommy	Wet	
13	Footed	Page	Site	
14	Blood	Seagoing	Speed	
15	Baby	Ranger	Telegraph	
16	Account	Business	Travel	

Grafty Green Gardening Club

Program of Events 2023

Date	Speaker/Event	Topic
January 10	Dr Mick Lynn and AGM	Which came first the Bee or the Flower
February 7	Steven Harmer	The story of Plant Hunting
March 7	Kevin Tooher	Getting the best out of Composting
April 4	Caroline Halfpenny and Spring show	A Gardener's response to Climate Change.
Saturday April 29	10 am Plant sale on the Green	
Sunday May 14	Coach outing to Leonardslee	
June 6	Outing to Faversham – Edible Culture	
July 4	Outing to Elmside, Ulcombe - Rhian Banham's Garden	
Sunday August 13	Coach outing to Hyde Hall	
September 4	Victoria Golding and Autumn show	Marden Meadow
September 8,9,10	Weekend away in Dorset, staying in Weymouth, visit Chawton House and Gardens, Abbotsbury, Athelhampton House and Garden and Holme Gardens	
October 3	Lou Nicholls	The Winter Garden
November 7	Christine Bartlett	Healthy House Plants, Happy Home
December 5	Social – wine and cheese with slide-show	

Acknowledgment and thanks were given to Sue Burch and Rosemary Smith at our AGM on January 11th as they stand down from the Committee after an impressive 25 years' service! Both will of course still be involved by their continuing membership of the club.

Sue and Rosemary have both been limitless in their hard work, devoting so much of their time to the Gardening Club by way of hosting meetings and events from their own homes, Bar B Q's evenings, opening their gardens and encouraging other to do the same, also providing a regular flow of ideas for involving the club in contributing to Village Fete's very popular catering and other stalls. A diversion was to provide assistance to the Church for the introduction of a wildlife garden.

For many years provision of the flower planters around the village and village hall garden was done by the club and Michael must be mentioned here for his help. An Annual Plant Sale was always a popular event. Most recently a successful entry into the Villages Scarecrow Festival in which 'Mr In Capability Brown won first prize

following being exhibited in the Mall in Maidstone, this, in spite of his developing aroma!

Thanks also to our Spring and Autumn show judge Lesley Feakes who is retiring from the Committee having completed a number of years helping us with this event. We are very grateful to Lesley.

On February 7th we look forward to a talk by Steven Harmer about the Story of Plant Hunting.

Outings take place from May to August this year (see Programme for details of these) and add your name to the lists on Club evenings.

Membership entitles you to a subsidised price for the two coach trips and also allows you to receive regular newsletters plus discount at Rumwood Nursery and the Potted Garden.

Further details from Carole Frost (Co-Secretary) on 07 817 459 186.

Ulcombe History Society

The next talk at the Ulcombe History Society on Tuesday 21st February at 7.30pm in Ulcombe Village Hall will be by Molly Poulter. It is entitled Memsahibs in India in the 18th and 19th centuries.

Molly was the archivist in the India Office Library. She was in charge of the European Manuscript Collection and her talk is based on the many paintings in that collection.

The talk charts the life encountered by the women who went out to India in the 18th and 19th centuries to join husbands or family members in what was at that time a strange and little-known country.

PROUD TO BE SERVING THE
COMMUNITY SINCE 1965

A.W.COURT
FUNERAL DIRECTORS



Your fully independent, family owned,
Funeral Directors, serving the local
community with compassion and the highest
standards of service and professionalism.

With our 24-hour emergency service,
we are only a telephone call away.

At the earliest stage possible, you will
speak directly with one of our experienced
Funeral Directors, who will be there to help,
support and guide you through the whole
of the funeral process.

Golden Charter 

Special Planning for Later Life

Headcorn Road, Grafty Green, Maidstone,
Kent ME17 2AP.

01622 850840

Email – enquiries@awcourt.com

Website – www.awcourt.com

A.W. Court is a Trading Division of
West & Coe Ltd, 602 Rainham Road South,
Dagenham, Essex RM10 8YP.



HOUSEKEEPING

all aspects of housekeeping and gardening
undertaken

We are an experienced and reliable cleaning and
home maintenance business.

Our clients can choose from a daily, weekly, fortnightly
or one off cleaning service ranging from general
domestic cleaning to site washing / ironing and
provisions shopping to holiday house checks and
garden or window box maintenance.

We also provide an 'at home' care service for the
housebound, elderly and your pets!

We are a small and dedicated team and we pride
ourselves in our efficient, honest and friendly service.

AMY MCLAUGHLIN

07813 030 527/01622 851562

amy.mclaughlin@hotmail.co.uk

Harrietsham Computers

Computer Problems?

Need an upgrade

or a new machine?

Just want some extra tuition?



For local, friendly, experienced
Help, call Mike Cuerden at

01622 859442 or

07963 020092



No call out fee
Reasonable rates
Private &
Commercial Work
No job too small

D.FLISHER ROOFING

*Free winter check on roofs
Roofing repairs, ridge & hips
checked*

*Moss cleaned off roofs
Gutters & window frames
cleaned*

Chimneys re-pointed

**Call Dave for a quote on
01622 850659 or 07941 324286**

Mower Plant Services

Sales Service Parts Repairs
Accessories

Walk Behind Mowers, Ride on Mowers,
Lawn Tractors, Brush Cutters, Water
Pumps, Hedge Trimmers, Chainsaws,
Snow Blowers, Generators, Leaf Blowers

Parts for all Garden Machinery available.

Give us a call or come and visit our
friendly staff to arrange the service/repair
of your garden machinery or perhaps we
can help you choose something new.



Sunpatch Farm, Headcorn Rd,
Smarden, TN27 8PJ

Tel: 01622 890046

Email: sales@mowerplantservices.co.uk
www.mowerplantservices.co.uk

Open Mon – Fri 8.30am-5.30pm, Sat 8.30am – 1pm

philip INDEPENDENT
ESTATE
AGENT
Jarvis

Your friendly, local estate agent,
specialising in the sale and letting of
village and country properties.

**If you are looking to move
in the near future
call us now.**

T: 01622 858241

W: www.philipjarvis.co.uk

A: 1 The Square, Lenham, Kent ME17 2PH

E: homes@philipjarvis.co.uk

Cybereye Security Electrical Services

RING MARCUS SHEPARD ON

01622 858612 or 07821776334

ALARM SYSTEMS CCTV FIRE ALARMS

AUTOMATED GATES VIDEO/AUDIO ENTRY SYSTEMS

EXISTING SYSTEMS REPAIRED AND MAINTAINED

ALL ELECTRICAL WORK UNDERTAKEN

DOMESTIC AND COMERCIAL INSTALLATIONS

PART P CERTIFIED

FREE QUOTES

FULLY INSURED

24 HOUR CALL OUT

Seasoned Logs from Local Coppice for Sale

*Clean Burning, Kiln Dried
Cut to size and delivered*



*Variety of logs suitable for
open fires or log burners*

**Contact Norman on
077333 28715**

Invicta Chimney Sweep



**No Mess
No Dust
No Fuss**

- All types of Chimneys swept and smoke tested
- Certificates Issued
- Pots, Cows, Bird Guards etc.
- Birdnest Removal
- Chimney Repairs

**Fully
Insured**

01622 632641

0798 854 9010

www.invictachimneysweeps.co.uk



MAIDSTONE LANDSCAPES & PROPERTY SERVICES Ltd

BrettApproved
PAVING EXPERTS YOU CAN TRUST

*Less 15% discount
with advert* and 20% over 55's
cannot be used with other offers
ad must be mentioned at time of estimate

LANDSCAPING- Drives, Patios, Pathways, Brick/Stone Walls, Block/Stone Paving, Tarmac, Decking, Fencing, Turfing, Ponds, Water Features, Garden Clearance, Sheds/Summer & Play House Bases, Tree Surgery etc.

BUILDING WORKS- Extensions, Porches, Conservatories, Garages, Groundworks, Roofing, PVC Windows, Doors, Soffits, Fascias, Floor/Wall Tiling, Decorating etc

FULLY INSURED/WORK GUARANTEED. VERY PROFESSIONAL/FRIENDLY SERVICE
Top Quality Materials/Workmanship from design to completion - FREE ESTIMATES

Tel: 01622 851222 Mob: 07786 07 01 07

www.maidstonelandscapes.com

LOOK: Please check our reviews and other companies you may use at www.uktc.org

Established: 1990 Director: M. Potter



Love is in the air!

This month we celebrate Valentine's Day and many will prepare elaborate displays of love for those nearest and dearest to them! Perhaps you'll be writing a card, buying a gift or presenting some flowers to someone special in your life? Valentine's Day can also serve as a welcome reminder that even our most sincere expressions displays of love cannot come close to the love that we have received from God.

In the Gospel of Luke (15:11-32) Jesus shares the parable of 'The Prodigal Son'. It tells of a son who asks his father for his share of the inheritance whilst his father is still living. Despite how hurtful this would have been, the father agrees and gives his son the money. The son soon moves away and squanders the inheritance on wild living. He runs out of money, hits rock bottom and eventually decides to return home and ask his dad to live as one of his servants. The incredible twist comes in the father's response to his son and it is designed to show us the love of our Heavenly Father towards us. Rather than reject or berate his son, the father ran to meet him and embraced him in a huge bear hug. He bestowed gifts upon him and laid on an extravagant feast to celebrate that his son had returned home.

Beyond displaying God's love through parables, Jesus demonstrated it through his life and ultimately through his death. The theologian Thomas Goodwin put it this way; "Christ is love covered in flesh". Jesus showed that there is no length that our Father God won't go to in order to lavish love upon us. All we need to do is begin the walk home and receive the embrace of the Father who runs to meet us.

I'll give the final word to the author Dane Ortlund who beautifully states; "Even the most intense human love is but the faintest echo of heaven's cascading abundance. His heartfelt thoughts for you outstrip what you can conceive."

Len Valley Benefice February 2023



Everybody is welcome

"In Christ Jesus you are all children
of God through faith"

Gal 3:26 (NRSV)

Wednesday 1st February

9.30am Lenham: Holy
Communion (BCP)

Sunday 5th February

9.30am Boughton Malherbe:
Holy Communion (BCP)

9.30am Lenham: Breakfast
Church

11.00am Harrietsham: Morning
Worship

11.00am Lenham: Holy
Communion

Sunday 12th February

9.30am Harrietsham: Holy
Communion

9.30am Lenham: Breakfast
Church followed by joining the
market.

11.00am Lenham: Holy
Communion

11.00am Ulcombe: Holy
Communion

3.30pm Boughton Malherbe:
Choral Evensong

Sunday 19th February

8.00am Lenham: Holy
Communion (BCP)

9.30am Boughton Malherbe:
Holy Communion

9.30am Harrietsham: Holy
Communion

9.30am Lenham: Breakfast
Church

11.00am Lenham: Morning
Worship *with baptism*

11.00am Ulcombe: Holy
Communion

Sunday 26th February

10.30am Benefice Holy
Communion at Harrietsham

*'Identity: "I am completely
included"'*

ONLINE • ON TABLET
ON MOBILE

COLES GROUP

VALUERS, LETTING
& ESTATE AGENTS

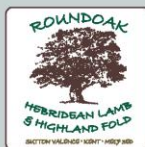
1% SELLING FEE +VAT

10% MANAGEMENT FEE +VAT

01622 763322

www.thecolesgroup.co.uk

POP UP BUTCHERY



FRESH AND
FROZEN MEAT
DIRECT FROM
THE FARM



HIGHLAND BEEF

JOINTS, STEAKS AND BURGERS, BRAISING
STEWING MINCE, RIB JOINTS AND MORE



HEBRIDEAN LAMB

FILLETS, RACK, LEGS, CHOPS, NECK,
SHOULDERS, BURGERS AND MINCE



RARE BREEDS PORK

STEAKS, CHOPS, JOINTS,
SAUSAGES AND BACON

PLEASE CALL THE FARM
ON 01622 844491

ROUND OAK FARM, HENIKER LANE,
SUTTON VALENTINE, ME17 3ED



Thorneloe & Co

Solicitors

Now part of Hallett & Co



*Based in Lenham, we provide a friendly, high quality, personal service tailored to
your specific needs.*

For you and your family....

- Wills, Probate and Tax Planning
- Trusts and Estate Administration
- Lasting Powers of Attorney
- Family and Employment Law
- Buying and Selling Your Home
- Court of Protection
- Dispute Resolution/Property
Litigation
- Personal Injury

For you and your business....

- Agriculture
- Commercial Property
- Buying or Selling a Business
- Business Contracts/Finance
- Employment Law
- Dispute Resolution/Property
Litigation

01622 859 416

Lenham@Hallettandco.co.uk

www.thorneloe.co.uk

St Mary's House The Square Lenham Kent ME17 2PH

Authorised and regulated by the Solicitors Regulation Authority Registered Number 50485

Emergency and Help Contact Details

Police, Fire and Ambulance Emergencies	999
Police, Non-Emergency - (Including PCSO)	101

Ambulance 999 note: an **aed** 'public access **defibrillator**' is sited and available 24/7 at the premises (in porch) of A.W. Court in Headcorn road. Ambulance 999 control centre will give 999 callers the lock code, if appropriate, to access the **defibrillator**.

NHS Medical Helpline	111
Maidstone & Pembury Hospitals	0845 155 1000
William Harvey Hospital	01233 633331
Headcorn Surgery (out of hours listen to -	01622 890294
Lenham Surgery recorded messages)	01622 858341

Electricity (UK Power Networks)	
Emergencies and Power Cuts	0800 783 8866 or 01243 508866

Water Emergencies	0333 000 0002
Southern Water Foul and Waste Water drainage/Flooding	0330 303 0368
Calor Gas Emergencies	08457 444999
KCC Emergencies	03000 41 41 41
Highways	03000 41 81 81

KCC Community Wardens:

Local warden – Stuart Ellesmere	07969 583923
District Support – Dawn Riach- Brown	07773 397125

Fire General Enquiries	01622 692121
Home Safety Visits	0800 923 7000

R.S.P.C.A Emergencies	0300 1234 999
Vet 24 Hour Pet Emergency Treatment Service	01622 734555

Maidstone Borough Community Protection - **01622 602202** – Bonfires, crime, dogs, domestic abuse, loan sharks, noise, pests and protection orders

Environmental Services – **01622 602162** – Fly tipping, Street cleaning, Litter, Bins, dead animals

Answers to the Quiz and Missing Word Puzzle

	Word 1	Word 2	Word 3	Answer
1	Cycle	Launch	Outboard	Motor
2	Boy	Mate	Yard	Stable
3	Court	Gum	String	Shoe
4	String	Prize	Bridge	Draw
5	Barrel	Belly	Ginger	Beer
6	Class	Golf	Sandwich	Club
7	Dead	Prickly	Stroke	Heat
8	Cuff	Golf	Missing	Links
9	Abiding	Out	Suit	Law
10	Big	Custard	Toffee	Apple
11	Keeper	Play	Table	Time
12	Dry	Tommy	Wet	Rot
13	Footed	Page	Site	Web
14	Blood	Seagoing	Speed	Vessel
15	Baby	Ranger	Telegraph	Bush
16	Account	Business	Travel	Expense

		Find the missing word?
1	Financial Times, Newspaper focused on Business	
2	Hank Marvin, Lead guitarist of 'The Shadows'	
3	East of Eden, Classic James Dean film	
4	Take my breath away, Hit track from the film 'Top Gun'	
5	The Red Cross, Humanitarian organisation established in the 19 th century	
6	Blind Date, Former TV game show hosted by Cilla Black	
7	Gary Rhodes, Late TV chef with spiky hair	
8	Cristiano Ronaldo, Fleet footed Portuguese football star	
9	Kirsty MacColl, Sang with The Pogues on a 'Fairytale of New York'	
10	The Great Gatsby, Scott Fitzgerald classic	

WARNING

CCTV IN OPERATION



Tel: 08000 199622

www.amiga.co.uk

CCTV | Intruder Alarms | Access Control | Fire