

## Moulsford Events

Nigel Baker

As autumn arrives, we bid goodbye to another social season; but we certainly ended it on a high with a great turn out for the Wildlife BBQ. The venison steaks and other tasty offerings went down very well, as did all the beer and wine. A special thanks to Andy Lee (Didcot Calor and Paving Centre) who kindly lent, brought and set up the BBQ, and also thanks more widely for all contributions and to all those who came along to enjoy a beautiful evening.

Of course, we've had many socials through the year, so it's a big thank you to your Events team and all the helpers whose efforts make these events such engaging and fun evenings. They are one of the community efforts that help make our village the special place it is.

It's time to look forwards again now. Next up we have the Comedy night on Saturday, 7th of October; at time of writing it may well be sold out, but try Tracey Lee 07866 625521; there may still be the odd cancellation.

The weekend after, the Moulsford Church team will be running the ever-popular Tear Fund Quiz; that'll be Saturday, October 14th, 7.30pm for 8pm start. It's only £12 a ticket, including a ploughman's supper (sure he won't mind too much\*), with all proceeds going to a very good cause. To reserve your places, call Twinks on 07884 373123.

We'll have a month off in November, but then of course Christmas will be on the way. The big event is the village Christmas Gala at the Beetle & Wedge on Friday, 15th December. Hotly anticipated as a fantastic event, tickets for this black tie do with disco, will, we're sure, be in demand as they're only £50! They're already available; just contact the wonderful Tracey Lee to book yours. The traditional Gala raffle is one of our biggest annual fund raisers for the village, thanks to the amazing prizes we are lucky enough to be able to offer, thanks to generous donors. If you have something special you'd like to contribute to the prizes, please do let Tracey or Nigel know.

Finally, we'll be holding the Christmas social on Friday, 22nd December, with festivities for all the family and we're hoping to book in an early visit from Santa (reindeer permitting). The Events Elves are also planning the Boxing Day walk to the Bell at Aldworth, cheers!

As ever, we'll keep you posted on these pages, but watch out for Facebook updates as well.

See you soon!



## Planning Applications and Decisions

Moulsford News and Planning deadlines invariably mean that the planning information below is out of date by the time of reading. For a current view of planning, please visit the online planning portal here:

<http://www.moulsford-pc.org.uk/community/moulsford-on-thames-15214/planning-applications/>

Reference	Description	Status
P23/S2380/HH Breach House Halfpenny Lane Cholsey OX10 9JN	Enlargement of the existing access, the construction of a new gate and the erection of a boundary wall.	MPC: Object (impact of boundary wall on vegetation and character of area)  SODC: Decision date put back to 29th Sep 2023, as a result of receiving further arboricultural and landscape information.
P23/S2379/LDE 2 Cranford Cottages Moulsford OX10 9HR	Change of use of land from agricultural land / paddock to residential garden, on basis that land has been in use as garden for more than 10 years prior to this application.	MPC: Object (insufficient evidence to support claim).  SODC: Refusal of Certificate of Lawful Use or Development on 20th September 2023. Decision made on following grounds: The available evidence, on balance of probability, suggests that the land within the red line area for which a certificate of lawfulness is sought has not been used as residential garden land for a period of 10 years or more prior to the date of the application. In the above circumstances the residential use of the land cannot be regarded as lawful within the meaning of Section 191 of the Town and Country Planning Act 1990 (as amended).
P23/S2223/HH Greenhill Cottage The Street Moulsford OX10 9JD	Ground and first floor extensions and internal alterations to existing building.	MPC: Object to current plans.  SODC: Considering. Target decision date 18th Oct 2023.

### Parish Council Meeting

12<sup>th</sup> October, @ 7.30pm  
Pavilion

Agenda will be published shortly on Facebook, Village Website, and Village Noticeboard.

Please advise one of the councillors asap if you have anything you would like included on the agenda.

## Light the Way to Christmas Day!

### A magical Christmas Eve in Moultsford

Christmas is always beautiful in Moultsford and this year, together, we can create a Christmas Eve that is truly special and memorable.

Imagine a candlelit walk through the village to the church, a Yuletide tippie and mince pie, carols amongst the Holly and the Ivy, performances from our village stars and children dressed for the Christmas story.

Although Christmas is a few weeks away here are the main points for your diary.

#### Candlelit Walk –

At 5.00pm make your way through candlelit streets to the Church. Carols and performances from 5.30pm.

#### Performances –

If you would like to do a little performance, please contact Twinks on 01491 651548 or mail [moultsfordxmas@outlook.com](mailto:moultsfordxmas@outlook.com)

#### Dress for the Christmas Story –

If younger children, or indeed grown ups, would like to dress up, that would be brilliant. Kings, Angels, Marys, Josephs, Shepherds, Wise Men, Donkeys, Sheep, Inn Keepers and Camels - if you have an Octopus outfit, that would be welcome too!

On this Christmas Eve, Moultsford will become more magical than ever, so whether you are 8 or 80, please join us for an enchanting beginning to Christmas Eve. And who knows, it might even snow!

Look out for more details about Light the way to Christmas Day on flyers, on Moultsford Village Facebook and future Moultsford News editions. In the meantime, if you have questions please email: [moultsfordxmas@outlook.com](mailto:moultsfordxmas@outlook.com)



## Changes at Moulsoford Parish Council

We are delighted to welcome Andrew Harris, Offlands Cottages, Moulsoford, who is taking over as Parish Clerk with immediate effect. Please note his contact email remains as for previous parish clerks – that is, [parishclerk@moulsoford-pc.org.uk](mailto:parishclerk@moulsoford-pc.org.uk)

## Highways Update

Oxfordshire County Council Highways carried out a traffic survey in September, with measurements taken at three points in the village.

The Parish Council has just received the analysis of the results and will use this when considering next steps for reducing speed and improving safety along the main road.

We will be asking for SODC support to be considered for a 20mph speed restriction through the village. There will be no cost to the parish council, as the funding currently available will cover implementation, but we are registering an expression of interest now as there is quite a backlog of villages applying.

## Recreation ground and playground improvements

As part of the work the previous council did, plans were drawn up for improvements to the recreation ground.

Having carried out a recent review on the recreation ground, this work now needs to be picked up. In particular:

- We carry out annual safety inspections on the playground equipment. However, some of it is degrading with time and use and needs repair and/or replacement.
- The football goals are again in need of tender loving care – or complete replacement – being held together by string and paint!
- The dead hedging at the top of the recreation ground needs finishing
- The area where the umpire/cricket shed used to be needs tidying and various metal objects removing.

We would appreciate it if several people from the village could come forward to help us with the initial clear up and ensure that the recreation ground remains the vibrant heart of the village. Whilst early next year, we hope to start looking at additional improvements. If interested in getting involved, please contact Melanie Mousley Jones, [mmousleyjones@moulsoford-pc.org.uk](mailto:mmousleyjones@moulsoford-pc.org.uk).

## Gigaclear

Many of you will have received letters from Gigaclear relating to the installation of high speed broadband in the village and be wondering what is happening next.

Gigaclear has been in contact recently and assured the council that this is still in plan for them. However, dates for when the work will take place are not yet available.

## River access

Clarification has been gained regarding the impact of Highway changes in Ferry Lane, as agreed between Oxfordshire County Council and the Beetle and Wedge. The parish council will be drawing up an agreement to cover the responsibilities of the different parties.

We also need to consider how to best improve the landing stage and area around the willow tree, to facilitate villagers launching small craft such as kayaks, canoes, and paddle boards from here. If you can spare some time to be involved in this, please contact Sue Powell, [spowell@moulsoford-pc.org.uk](mailto:spowell@moulsoford-pc.org.uk).

As always, if you have any questions or any specific concerns you would like to raise with your parish council, our details are on the back of Moultsford News.

We look forward to hearing from you and maybe seeing some of you in future Parish Council meetings.

.....

### **VACANCY - SECRETARY**

The Moultsford PMC, (Pavilion Management Committee),  
is made up of seven village residents.

We keep the wheels turning of this successful venue for events.

The role of Secretary has become vacant and we are seeking a  
replacement to join this friendly committee

**Just FOUR meetings are held each year, in the pavilion,  
so  
this is not an onerous task!**

Liaising to fix dates for meetings  
Emailing already prepared meeting agenda  
Taking down the minutes and circulating afterwards  
Custodian of our 'Key Annual Task' list

If you can type and have access to a computer and email, and would  
enjoy getting involved in village life and our fabulous Pavilion, you  
could be the team member we are looking for!

Please either ring or email Deb

[clockox@aol.com](mailto:clockox@aol.com)

01491 651045

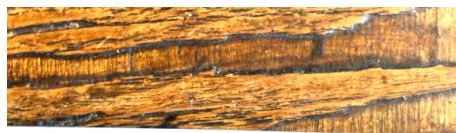
## Veronica Port's Funeral

In the last Moultsford Newsletter, we mentioned the sad passing of our mother Veronica Port. In the meantime, on Friday 15th September, Veronica's funeral took place at St John the Baptist Church in the village.

It was a truly beautiful day - in every sense.

Family and friends followed the hearse down to the church from Glebe Close and the Reverend Rebecca Peters conducted a lovely service, with Glynne Stackhouse as the organist.

The service included two poems - 'Memories of Granny' read by three of Veronica's grandchildren (Lucy Kverndal Wright and Alexandra and Will Bennett Baggs) and 'She is gone' read by Veronica's daughter, Hetty McConnon. Diana Kilroy, Veronica's sister, read Psalm 23 and two separate eulogies were given by Veronica's son, Tim Stow, and Veronica's brother, Tim Richards.



Many friends from the village attended the service. The church was packed and some mourners had to stand outside (fortunately, thanks to the Reverend Peters, audio equipment had been set up so those outside could follow the service). Family and many other friends came from far and wide including Veronica's brother Griff who traveled all the way from Auckland, New Zealand.

The church and surrounds looked beautiful and a big thanks must go to all those who helped in the days before and on the day itself in making everything look so lovely. A true tribute to Veronica!

Speaking as her children, we were truly humbled by the many messages of condolence but also just the simple asides from so many of you, relaying to us what an amazingly fun and kind human being our mother was. She did so much unsung and unheralded work which she rarely, if ever, spoke about, simply assuming that this was how life should be lived.

Thank you again - there will forever be a piece of Moultsford in our hearts!

Tim Stow & Hetty McConnon  
(Veronica's son and daughter)



Dear Friends,

This month I thought we would focus on a particular Saint, St Francis of Assisi and his love for creation.

St Francis (1181 – 1226) is surely one of the most attractive and best-loved of all the saints. But he began by being anything but a saint. Born the son of a wealthy cloth-merchant of Assisi, Francis' youth was spent in fast-living, parties and on fast horses as a leader of the young society of the town. Then he went to the war between Assisi and Perugia, and was taken prisoner for a year.

By the time of his release, Francis had changed. Perhaps his own suffering had awakened him to that of others. In any case, he abandoned warfare and carousing, and began to help the poor and the lepers of his area. Then one day a voice which seemed to come from the crucifix in the small, semi-derelict church of Damiano Assisi 'Go and repair my house, which you see is falling down'.

His inspiration was always religious, not social, and the object of his quest was always the Crucified Christ. Francis rebuilt San Samiano, and then travelled as a pilgrim. His compassion for the poor and lepers became famous. Soon disciples joined him, and they set up a communal life in simple wattle and daub huts. Francis' close rapport with the animal creation was well known. The story of his preaching to the birds has always been a favourite scene from his life. He also tamed the wolf of Gubbio. This affinity emphasises his consideration for, and sense of identity with, all elements of the physical universe, as seen in his Canticle of the Sun. This makes him an apt patron of nature conservation.

During this Autumn time we are really thankful to the gardening group, the love and care they show to the church graveyard and we too celebrate a Love of creation at our services at 9:30am at St John the Baptist Moulsoford, all are welcome.

Rebecca Peters - Vicar

[rev.cholseyandmoulsoford@gmail.com](mailto:rev.cholseyandmoulsoford@gmail.com)



# St. John the Baptist, Moultsford, October

MON	TUES	WED	THURS	FRI	SAT	SUN
						1 09:30 Common Worship (Contemporary) Rev. Chris Stott
2 11:00 Keep Fit Cholsey Meadows Contact 599 433	3 14:30 House Groups contact 651401	4 17:30 Gardening Group	5 11:00 Communion Service Rev Rebecca Peters	6 11:00 Morning Praise Old Vicarage Laity	7 11:00 Communion Service Rev Rebecca Peters	8 09:30 Faith Explored Rev. Andrew Pettit 18:30 Youth Club Laurence Hall, Cholsey
9 11:00 Keep Fit Cholsey Meadows Contact 599 433	10 10:30 onwards Coffee Shop Pavilion 14:30 House Group contact 651401	11 13:00 Moultsford Pre Prep. Harvest	12 11:00 Morning Praise Old Vicarage Laity	13 11:00 Morning Praise Old Vicarage Laity	14 11:00 Morning Praise Old Vicarage Laity	15 09:30 Common Worship (Contemporary) Rev. Rebecca Peters
16 11:00 Keep Fit Cholsey Meadows Contact 599 433	17 09:30 L Team Glebe Close	18 14:30 House Groups contact 651401 PCC meeting	19 11:00 Morning Praise Old Vicarage Laity	20 11:00 Morning Praise Old Vicarage Laity	21 11:00 Morning Praise Old Vicarage Laity	22 09:30 Common Worship (Contemporary) Rev. Alan Gates
23 11:00 Keep Fit Cholsey Meadows Contact 599 433	24 14:30 House Groups contact 651401	25 17:30 Gardening Group	26 11:00 Morning Praise Old Vicarage Laity	27 11:00 Morning Praise Old Vicarage Laity	28 11:00 Morning Praise Old Vicarage Laity	29 09:45 Benefice Service Cholsey
30 11:00 Keep Fit Cholsey Meadows Contact 599 433 19:30 Benefice Team meeting	31 11:00 Keep Fit Cholsey Meadows Contact 599 433					

A short morning service is available each day in conjunction with our Partnership Parish of St. Phillip the Apostle, Huhudi, SA by Zoom, WhatsApp and e-mail. Contact Janet Knowles 651401 for further details.



## FESTIVE SET MENU

£37 PER PERSON



### STARTERS

ROAST PARSNIP & CUMIN SOUP, CHESTNUT DUMPLINGS, CRISPY SAGE *GFO*

CHICKEN LIVER PARFAIT, GRAPE JELLY, PICKED KOHLRABI & RADISH SALAD, BRIOCHE *GFO*

GIN CURED SALMON, CELERIAC & GRAIN MUSTARD REMOULADE, CUCUMBER RELISH *GFO/DFO*

BLUE CHEESE MOUSSE, RED WINE POACHED PEAR, BITTER LEAVES, WALNUT, MOLASSES *GFO*



### MAINS

ROAST TURKEY, CHESTNUT & SAGE STUFFING, GOOSE FAT POTATOES, SPROUTS,  
PIGS IN BLANKETS, RED WINE JUS *GFO/DFO*

PAN FRIED SEA BASS, MUSSEL, LEMON GRASS & CHILLI BROTH, FENNEL CRUSHED POTATOES *GFO/DF*

BUTTERNUT SQUASH, PINE NUT & GOATS' CHEESE PITHIVIER, WILTED SPINACH, TOMATO VELOUTÉ

FEATHER BLADE OF BEEF, HORSERADISH POMME PUREE, BOURGUIGNON JUS *GF/DFO*



### DESSERTS

CINNAMON POACHED APPLE, CRANBERRY COMPOTE, OAT CRUMBLE, HONEYCOMB ICE CREAM *V/GF/DF*

PEANUT BUTTER & FRANGELICO PARFAIT, HOBNOB CRUMB, PASSIONFRUIT CURD

XMAS PUDDING, GRAND MARNIER ANGLAISE, GINGERBREAD *GF*

CLEMENTINE & DARK CHOCOLATE CHEESECAKE, MARMALADE CHANTILLY CREAM



PARADISO COFFEE AND TWINNING TEA TO FINISH



# What's on in Moultsford and Surrounding Areas

## Monthly Coffee Shop

Gail Slinger



The next **Village Coffee Shop** will be on  
**Wed, 11th October 2023 in the Pavilion**  
**from 10:30am to 12 noon.**



Please come and join us, bring a friend, neighbour or family member, we would love to see you all and have a chat. Please put your name on our Calendar Rota for 'Putting the Kettle on'; there is always help on hand if you need it and it's a good way to meet people and have a chat.

The September Coffee Shop was in aid of MacMillan, another great turnout with everyone being so very generous. Your donations amounted to £100, which I have sent to MacMillan, a very BIG THANK YOU to everyone.

The October Coffee Shop will have Halloween themed delights to eat and steaming coffee and teas too, do please join us.

Putting the kettle on in **October** will be **Carol and myself**.

So lovely Moultsford residents, friends and family we look forward to seeing you in **October** at the pavilion.

### Future Dates - Apologies for incorrect dates in the September MN

8th November - Gary & Trevor

13th December - Gail & Christmas Helpers

.....

#### Moultsford Parish Council (MPC) Meeting

**Thursday, 12th Oct 2023**  
19:30 in the Pavilion  
Everyone welcome!

#### Moultsford Events Committee (MEC) Meeting

**Wednesday, 29th Nov 2023**  
19:30 in the Pavilion  
Everyone welcome!

### Wallingford Country Market



Open each Friday morning in  
St. Mary-le-More Church,  
(situated just behind the Town Hall),  
between 9.30 am - 12 noon.

Selling delicious homemade baked goods and preserves, home grown plants, fruit and vegetables and many crafts.

### Cholsey Community Library

Monday to Friday	2pm to 4.30pm
Friday Evening	6pm to 8pm
Saturday Morning	9.30pm-12.30pm

# 133 Goring - Wallingford via Streatley & Moulsoford

**Including revised service from Monday 4th September 2023**

	<b>Until 1st September 2023</b>		<b>From 4th September 2023</b>			
<b>Days of Operation</b>	<b>Mondays, Wednesdays and Fridays</b>		<b>Mondays and Wednesdays</b>		<b>Fridays</b>	
<i>Days of Operation</i>	<i>M,W,F</i>	<i>M,W,F</i>	<i>M,W</i>	<i>M,W</i>	<i>F</i>	<i>F</i>
GORING, Railway Stn Forecourt	09:10	11:25	09:00	11:25	09:00	11:35
Goring Surgery/Library	09:11	11:26	09:01	11:26	09:01	11:36
Swan Hotel/Streatley Traffic Lights	09:12	11:27	09:02	11:27	09:02	11:37
Moulsoford Beetle & Wedge turn	09:17	11:32	09:07	11:32	09:07	11:42
Moulsoford, Old Vicarage	09:18		09:08		09:08	
Wallingford Hospital	R	R	R	R	R	R
Wallingford LiDL	R	R	R	R	R	R
WALLINGFORD Market Place	09:30	11:45	09:20	11:50	09:20	12:00
<i>Continues to</i>	<i>DIDCOT*</i>	<i>DIDCOT*</i>	<i>DIDCOT</i>	<i>DIDCOT</i>	<i>DFL</i>	<i>DFL</i>
	<b>Until 1st September 2023</b>		<b>From 4th September 2023</b>			
<b>Days of Operation</b>	<b>Mondays, Wednesdays and Fridays</b>		<b>Mondays and Wednesdays</b>		<b>Fridays</b>	
<i>Days of Operation</i>	<i>M,W,F</i>	<i>M,W,F</i>	<i>M,W</i>	<i>M,W</i>	<i>F</i>	<i>F</i>
<i>Starts from</i>		<i>DIDCOT*</i>		<i>DIDCOT</i>		
WALLINGFORD Market Place	11:05	15:13	11:05	15:15	11:15	15:15
Wallingford LiDL	Q	Q	Q	Q	Q	Q
Wallingford Hospital	11:06	15:14	11:06	15:16	11:16	15:16
The Meadows	11:08	15:16	11:08	15:18	11:18	15:18
Moulsoford, Old Vicarage	R	R	R	R	R	R
Moulsoford Beetle & Wedge turn	11:11	15:19	11:11	15:21	11:21	15:21
Streatley Primary School	R	R	R	R	R	R
Streatley, The Coombe	R	R	11:14	15:24	11:24	15:24
Streatley Traffic Lights/Swan Hotel	11:14	15:22	R	R	R	R
GORING, Railway Stn Forecourt	11:25	15:33	11:25	15:35	11:35	15:35

**DFL** Dorchester Flyer: to or from Dorchester village

\* To or from Didcot on Mondays and Wednesdays only.

Q Picks up here on request only by prior arrangement with the driver on the outward journey

R Sets down only at these points on request to the driver by passengers already on board at previous timing point

**Sorry, no services on other days or on Public Holidays**

**All times subject to change at short notice. Please check our website before you travel. Times shown on Traveline or other websites may not be up to date.**

**CONCESSIONARY PASS HOLDERS**

**Free travel on all these services  
except before 09:30 in West Berkshire**

**[www.goingforwardbuses.com](http://www.goingforwardbuses.com) 07484 605888**

## What's on in Moultsford and Surrounding Areas *continued*

### ***THE COFFEE SHOP***



**WEDS 11th October**

**10.30AM-12NOON**

If you fancy a couple of hours of chatting, relaxing and drinking coffee or tea, do join us, £1.50 donation.

Please do come along, everyone from the village is welcome. For more information call Gail Slinger on 01491 651931 or email [gailslinger2601@gmail.com](mailto:gailslinger2601@gmail.com).

### **Spinning Club - Social Craft**

Moultsford craft group meets on the 2nd Thursday of the Month and would like to invite anyone who already does crafting or would like to start crafting to join us.

It is a very sociable and informal meeting and everyone is made to feel welcome.

We meet between 6.30 and 10pm.

For more information, call Linda Scurr on 652916.

### **What's On at the Corn Exchange in Wallingford, Cinema/Theatre:**

#### **October Calendar**

1st - 4th - A Haunting in Venice - 7:30pm

4th - A Haunting in Venice - 2:30pm (Matinee)

5th - The Royal Opera - L'Elisir D'Amore - 7:15pm  
(One Interval)

6th & 7th - Bolan's Shoes - 7:30pm

18th - 21st - The Welkin - Sinodun Players - 7:30pm

22nd - 24th - The Old Oak - 7:30pm

25th - An Evening with Jonas Kaufmann - 2:30pm  
Matinee & 7:30pm

26th - Angel Headed Hipster: the songs of Marc  
Bolan & T Rex - 7:30pm

27th -31st - The Miracle Club - 7:30pm

**BoogieTOTS**

JOIN JOSIE & HER GUITAR FOR  
SINGING, DANCING & STORYTELLING

A NEW CLASS FOR CHILDREN  
AGE 0-4 YEARS

DAY  
THURSDAYS

TIME  
9.30-10.15AM

VENUE  
MOULSFORD PRE-PREP  
OX10 9HR

NO NEED TO BOOK  
FREE OF CHARGE

Contact telephone number: 01491 652511

## HENLEY AND DISTRICT STAMP CLUB

I was hoping for an Indian Summer but at the time I am writing it looks pretty hopeless. We have re-commenced our meetings in Bix Village Hall and we are looking forward to an interesting season.

One thing you can say about the Bix Village hall is that the heating is very good and you don't get cold.

One of the things you are able to do when you collect stamps is look into the history that surrounds the stamp and the reasons it was produced. It is surprising what you can find out.

The Henley Stamp Club is a friendly group and we would be delighted to see new visitors or members. If you are interested in facts concerning stamps or postal history, why not come along and find out about how you can promote your interest?



To learn more about stamps and postal history why not visit us at Bix one Wednesday evening? You can then meet people who find postal history and the story of stamps fascinating too.

Meetings are held the 2nd and 4th Wednesday of the month at Bix Village Hall at 7.30 p.m.

Wednesday, 11th October - Is a members evening displaying "Ephemera".

Wednesday, 25th October - We have a guest speaker, Peter Wood with a display on the subject "It's an Irish World"

Visitors and new members are very welcome.

Further details can be obtained by phoning Brian on 01491 681739 or on our website [www.henleyphilatelic.org.uk](http://www.henleyphilatelic.org.uk)

### Wallingford Local Producers Market

Wallingford Local Producers Market (WPLM) is held every Saturday morning from 10am to 12:30pm.

Markets are held in St Mary's Church in the centre of Wallingford. Usually, our food stalls can be found outside with our craft stalls inside.

WPLM hosts the best of locally-produced food and crafts that are grown, harvested and made within 30 miles of Wallingford. We champion local farmers and vegetable growers, cheese-makers, bakers, and makers of honey and preserves. Every market has a range of craft stalls including textiles, jewellery, ceramics, art and photography, all hand-made by local people.



# What's on in Moultsford and Surrounding Areas *continued*



## **AMUSE BOUCHE**

AERATED LOBSTER BISQUE, BROWN SHRIMP & FENNEL, PICKLED LEMON *GFO*



## **STARTERS**

ROAST PARSNIP & CUMIN SOUP, CHESTNUT DUMPLINGS, CRISPY SAGE, HONEY CAVIAR *GFO*

CHICKEN LIVER PARFAIT, RED ONION MARMALADE, ROSEMARY & SUN-DRIED TOMATO FOCACCIA *GFO*

CRISPY COD CHEEKS, CURRIED CELERIAC REMOULADE, PICKLED KOHLRABI & RADISH SALAD, LIME *DF*

SPICED DUCK & CRANBERRY SPRING ROLL, CUCUMBER RELISH, PARSNIP PUREE *DFO*

SMOKED MACKEREL FISHCAKE, BEETROOT VELOUTÉ, BUTTERMILK & HORSERADISH GRANITA



## **MAINS**

ROAST TURKEY, CHESTNUT & SAGE STUFFING, GOOSE FAT POTATOES, SPROUTS,  
PIGS IN BLANKETS, RED WINE JUS *GFO DFO*

GOATS CHEESE, HONEY & SAGE RAVIOLO, EGG YOLK, BUTTERNUT SQUASH VELOUTE, SAUTEED CASHEW &  
KALE

BRAISED BLADE OF BEEF, SEARED FOIE GRAS, GRAIN MUSTARD ROSTI, CELERIAC PUREE, BACON JUS *GF*

PAN FRIED HALIBUT, CLAM CHOWDER, CAULIFLOWER FONDANT, SPINACH FRICASSEE, LEMON *GFO*

BAKED DOVER SOLE, SHRIMP & PANCETTA BUTTER SAUCE, HASSELBACK POTATOES *GFO DFO*



## **DESSERTS**

CHRISTMAS PUDDING, GRAND MARNIER ANGLAISE, GINGERBREAD TUILLE *GF*

RASPBERRY & BUTTERMILK PANNACOTTA, WHITE CHOCOLATE AREO, POPPY SEED CRISP *GFO*

PEANUT BUTTER & FRANGELICO PARFAIT, HOBNOB CRUMB, PASSIONFRUIT CURD *GFO*

DARK CHOCOLATE ORANGE BROWNIE, CASHEW NUT BRITTLE, ESPRESSO MARTINI ICE CREAM

SELECTION OF CHEESES, CRACKERS, QUINCE, CHUTNEY, FRUIT ETCC *GFO*



## **PETIT FOURS**

WHITE CHOCOLATE, RASPBERRY & CHAMBORD TRUFFLES *GF*  
CLEMENTINE JELLY WITH CLOVE, STAR ANISE & CINNAMON *GF/DF*

FOOD ALLERGIES & INTOLERANCES; PLEASE SPEAK TO THE DUTY MANAGER ABOUT THE INGREDIENTS IN YOUR MEAL, WHEN MAKING YOUR ORDER.  
GF / GFO GLUTEN FREE / GLUTEN FREE OPTION DF / DFO DAIRY FREE / DAIRY FREE OPTION V VEGAN  
A DISCRETIONARY 10% SERVICE CHARGE WILL BE ADDED TO YOUR BILL.

## Bonfire & Fireworks Night, Thursday 2nd November 2023

### ADVANCE NOTICE

Moulsford Prep School would like to offer advance notice that their annual Bonfire and Fireworks Night will be held on Thursday 2nd November from 5.45pm.

Members of the school's staff and parent volunteers will be on hand to keep disruption to a minimum and ensure that traffic can be free flowing.

If you have pets at home, you may wish to keep them inside until the fireworks end at approximately 7pm.

The Moulsford School Christmas Fair will be held on Saturday 9th December from 10am until 1pm.

All residents are welcome to join us in the Sports Hall for some last minute Christmas shopping and to enjoy refreshments and the entertainment on offer from the school's choirs and musical ensembles.

## Wallingford Emergency Food Bank

We are a registered charity operating a food bank based in the centre of Wallingford with the aim of providing emergency food packages to those who need them. Wallingford Emergency Food Bank was set up by Churches Together in the Wallingford Area and we began serving the community in 2011.

Our address is

Wallingford Emergency Foodbank

Ridgeway Community Church

21b/22 St Mary's St

Wallingford

OX10 0EW

In the first year, we provided food for approximately 400 people. The current annual demand is approximately 3000 people. We rely entirely on unpaid volunteers and donations of food and money from the public, churches, and other local organisations.



If you need food please [click here](#) to find out more.

If you are interested in volunteering please [click here](#).

If you would like to donate to the food bank please [click here](#).

Although we are essentially a Christian run organisation, we are by no means exclusive; we welcome volunteers of any faith or none, and we give food to anyone in real need.



The poster features a blue background with a white central area. At the top, the title 'The Big Quiz Night' is written in large, bold, white letters. To the right of the title is a purple circular logo with a white bus icon and the year '2023'. Below the title, there are three cartoon illustrations: a man in a brown coat and hat holding a magnifying glass, a man in a green shirt and blue pants jumping, and a woman in a yellow shirt and blue pants kicking a soccer ball. A white cat is perched on the top of the title. The text 'Tickets £12' is written in white on a blue rectangular background. Below this, the date 'SATURDAY 14<sup>th</sup> OCTOBER' is written in large, bold, white letters. Underneath the date, the time '7.30pm for 8.0pm' is written in white. Below the time, the venue 'MOULSFORD PAVILION' is written in white. Underneath the venue, the word 'with' is written in small white letters. Below 'with', the text 'PLOUGHMANS SUPPER' is written in white. At the bottom left, the website 'tearfund.org/quiz' is written in white. Below the website, the address 'Tearfund, 100 Church Road, Teddington, TW11 8QE, United Kingdom' is written in white. Below the address, the phone number '+44 (0)20 3906 3906' and email 'info@tearfund.org' are written in white. Below the email, the social media handles 'Facebook, Twitter, Instagram /Tearfund' are written in white. At the bottom right, the Tearfund logo is displayed in white on a blue rectangular background. At the very bottom, there is a small line of text: 'Registered office: Tearfund, 100 Church Road, Teddington, TW11 8QE. Registered in England: 994339. A company limited by guarantee. Registered Charity No. 265464 (England & Wales) Registered Charity No. SC037624 (Scotland) 00848-07523'.

**The Big Quiz Night** 2023

**Tickets £12**

**SATURDAY 14<sup>th</sup> OCTOBER**

**7.30pm for 8.0pm**

**MOULSFORD PAVILION**

with

**PLOUGHMANS SUPPER**

[tearfund.org/quiz](https://tearfund.org/quiz)  
Tearfund, 100 Church Road, Teddington, TW11 8QE, United Kingdom  
☎ +44 (0)20 3906 3906 ✉ [info@tearfund.org](mailto:info@tearfund.org) 📱 @Tearfund

Registered office: Tearfund, 100 Church Road, Teddington, TW11 8QE. Registered in England: 994339. A company limited by guarantee. Registered Charity No. 265464 (England & Wales) Registered Charity No. SC037624 (Scotland) 00848-07523

**tearfund**

# Local News

## WheelyFest heralded as a resounding success!

### Crowds applaud excellence of amazing musical acts

Wallingford Accessible Boat Club (WABC), the local charity which enables disabled and generally immobile people to get out and about on the River Thames, heralded the charity music event WheelyFest as a tremendous success. The numbers of excited 'festival goers' exceeded expectations and the financial target for the event was smashed! Eleven named bands played a wide range of non-stop music over the 7 hours of the event held yesterday (Sunday) at the Sports Park, Wallingford. There were fundraising games to be played by young and old and a star raffle featuring some excellent prizes. Additionally throughout the run-up to the event there featured an online auction offering more brilliant prizes and on the day a Hog Roast, organised by the Red Lion, Cholsey.

Amazingly all the musicians' acts were provided totally free of charge!

John Jenkins MBE, Chair of WABC and organiser of WheelyFest commented: "What a day, what an event! An extravaganza of musical brilliance, non-stop throughout the 7 hours duration. And all provided on a voluntary, no fee basis! We have to thank not only all the volunteers of WABC who put in sterling efforts to ensure all ran smoothly, all the incredible donors of so many raffle and auction prizes but to Sarah Eastwood, our Musical Director, a top-class musician and actress, who pulled 'everything musical' together. We are so thankful to her."

Jenkins continued: "We had two objectives for the event – increased awareness of the charity and we certainly achieved that, and, as a fundraiser, to support the operation of our Wheelyboat, WOW-one. Whilst final figures are still to come in, we can be confident that our £3,000 target has been well beaten. What an amazing success!"

## Thank the Earth: Earth Trust's Pumpkin Patch Family Event Returns this Half-Term

Get ready to celebrate the bountiful beauty of our planet this autumn as Earth Trust rolls out the orange carpet for the return of their Pumpkin Patch family event! As part of a [Thank the Earth](#) season, Earth Trust invites you to join in the muddy, marvellous fun at our farm, nestled beneath the iconic Wittenham Clumps.

After the success of last year's Pumpkin Patch, we are over the moon to welcome visitors of all ages back for another round of harvest fun. Get ready for some earthy, hands-on adventure, exploring the growing field, handpicking pumpkins and squash of all shapes and sizes, and finding your way around our sweetcorn maze.

The earth beneath our feet is more than just dirt – it's a dynamic resource supporting all forms of life.

Home to a quarter of the Earth's species and capturing a third of carbon emissions, our soil is a true unsung hero – in fact, there are more organisms in one teaspoon of healthy soil than there are people on the planet.

Public Programming Manager, Amy Rowland enthuses, "Mud is magical, no matter your age! So, this half-term, join us down on our farm to get your boots muddy and your hands grubby as we have a blast with our favourite autumn harvest. Picking your own pumpkin is not just fun; it's a fantastic way to connect with farming, food, and nature."

### Squashing Waste

Traditional pumpkin events can be frightful (get it?) when it comes to generating waste. An estimated 24 million pumpkins are purchased in the UK each October, and over half of them end up in the bin.

Earth Trust, however, has taken a deliciously wonky approach. We've grown a wide variety of squash and pumpkins of every size, shape, and colour – not just for carving, but for cooking too. We encourage all our visitors to cook, carve, and compost their pumpkins (yes, even the seeds!) to join us in our mission to squash waste.

We're thrilled to partner with Good Food Oxfordshire and Waste Innovation Station (WISH) to ensure that no produce goes to waste. Good Food Oxfordshire will glean any leftover produce for redistribution by Oxford Food Hub to kitchens, cafés, and other places to nourish our local communities.

## Local News *continued*

Paul Hill, Earth Trust's Head of Environmental Land Management, explains; "We're sowing a variety of crops in our Pumpkin Patch with big goals in mind. We want to nurture our soil, as it is crucial for health and wellbeing. And, we want to show that even when starting with something as small and humble as a pumpkin, each and every one of us can make a difference."

Whether you choose to cook, carve, or compost, our Pumpkin Patch event promises a world of eco-conscious fun and flavour. So, mark your calendars, grab your wellies, and join Earth Trust in celebrating our beautiful planet this half-term.

'Pumpkin Patch' is happening from Saturday 21st October to Sunday 29th October.

Booking is recommended for Pumpkin Patch, with tickets now on sale at a cost of £7 per family/group (up to 6 people). There is an additional cost for produce picked on the day. For more details please visit our website.

[earthtrust.org.uk/events/pumpkin-patch](https://earthtrust.org.uk/events/pumpkin-patch)

## Oxfordshire Nature Campaign Gains Momentum: Sign the E-Petition Today

In the face of a pressing biodiversity, climate and health crisis, Oxfordshire's environmental community is rallying together to make a resounding call for the inclusion of nature on every political agenda.

Yesterday, RSPB released the findings from their latest State of Nature report, reconfirming that the UK is one of the worst countries in the world for nature loss, with almost 1500 species now threatened with extinction.

As the county grapples with rapid development and its impact on our natural environment, a coalition of organisations, including the Oxfordshire Environment Board, Earth Trust, Wild Oxfordshire, Community First Oxfordshire, and CAG Oxfordshire, is joining forces to support the nation-wide Nature 2030 campaign. Together, they are urging the public to add their voices to the growing chorus demanding that politicians prioritise nature in the lead-up to the next general election. [www.oxeb.org.uk/nature-2030.html](https://www.oxeb.org.uk/nature-2030.html)

Jayne Manley, Chair of the Oxfordshire Environment Board, and CEO of Earth Trust explains, "The urgency of the matter cannot be overstated. Over the past seven decades, nature has suffered a staggering decline, with habitats shrinking, species dwindling, and ecosystems fragmenting. Everyone should have the right to live in a clean and healthy environment. Voters want the freedom to enjoy nature, breathe clean air, drink safe water, and see plenty of plants and wildlife around them. Before the next general election, we're asking all political parties to promise to make this right a law."

It's been over 5 years since the sobering 2017 Oxfordshire State of Nature report revealed widespread losses of species-rich grasslands and habitat fragmentation, painting a bleak picture of our natural world.

Oxfordshire's active network of community groups and projects have been working hard to support nature's recovery - CAG Oxfordshire's "Communities and Nature" project is just one example of how committed individuals and organisations are working to restore the county's habitats and connect more people to nature. Ongoing monitoring of the state of nature in Oxfordshire, reveals some positive developments such as the expansion of Local Wildlife Sites, and slight population improvements for some farmland bird species. However, despite these commendable efforts, we remain far from achieving a substantial shift toward nature's recovery and the overall picture is one of continued decline for many threatened species.

Camilla Burrow, CEO of Wild Oxfordshire comments, "The fact is that nature is in decline, and our politicians need to do more to stop it. We have some brilliant examples of delivering nature's recovery in Oxfordshire at the landscape-scale, and there are hundreds of groups delivering nature recovery in their local area at a smaller scale, but we need more robust action and support for large scale change from our leaders."

Today, Oxfordshire's environmental champions are calling on everyone to take action by demanding action not words for nature's recovery by 2030.

Katherine Cheeson from CAG Oxfordshire comments: "We are asking people to make sure our leaders take action to protect nature. It's crucial that taking care of our environment is at the heart of all government decisions. This way, we can make sure our economy, food production, and our health are secure for the future."

In our Nature 2030 campaign we're calling on all political parties to adopt five landmark policies for nature's recovery ahead of the 2024 General Election.

1. **A pay rise for nature and farmers:** 69% of England is farmland. For nature to recover it must be at the heart of how that land is farmed. Incomes in many parts of the agricultural sector are low, so funding must be increased to enable the switch to nature-friendly farming.
2. **Making polluters pay:** Major economic sectors, including finance, retail, and energy, all contribute to nature's decline. Putting a Nature Recovery Obligation in law, will increase the resources available for protecting and restoring habitats, support the creation of new jobs, and generate wider investment in nature's recovery.
3. **More space for nature by 2030:** Just 7% of land in England is protected for nature and only just over a third of that is in good condition. To fulfil the promise to protect 30% of the land and sea for nature, we need a rapid delivery programme to restore protected sites and deliver more nature in all communities.
4. **Delivering the green jobs we need:** 13% of species in England are threatened, we need to train and fund more people to restore these species and the habitats where they live. More funding and a National Nature Service will create more jobs, ensure there are sufficient skilled people to carry out this scale of work, and help more wild spaces to thrive.
5. **A Right to a Healthy Environment:** 90% of people think access to nature is important for their health, but in England 38% do not have green space within 15 minutes' walk. Establishing a human right to clean air and water and access to nature, will result in public bodies making more positive decisions for nature, saving billions for the NHS and social care, and improving health outcomes for millions.

Sign the e-petition at [www.oxeb.org.uk/nature-2030.html](http://www.oxeb.org.uk/nature-2030.html) and join the campaign to compel political parties to prioritise nature on their agendas. By working together, we can secure a brighter, greener future for Oxfordshire and leave a lasting legacy for generations to come.

Nature is sending an urgent call, and it's time for Oxfordshire to answer.

.....

### Moulsford News Contributions

Planning a local event?  
Wanting to share some poetry or wisdom?  
Celebrating a special day or sporting/musical/... achievement?  
Doing something for charity?  
Share your news, plans and stories with us!  
You can reach the editor, Katja Abel, by email:  
[moulsfordnews@moulsford-pc.org.uk](mailto:moulsfordnews@moulsford-pc.org.uk)  
**Deadline for November edition: Wednesday, 25th October 2023**

# Tree Time

Wonderful to see you again, and welcome back to my 9th tree time interview. I was pretty stuck on which tree to pick this month, until one day, when I was on my sofa, I spotted our mini avocado tree sitting just left of me on our windowsill. Eureka! It's a fascinating tree to learn about, so let's dig right in with the shape, size, texture and properties of the avocado tree.

Avocado trees can be either tall and in a circular shape, or very small, short but still in a circular shape. The tallest avocado tree ever recorded was 6.70 meters, which is surprisingly very tall for this species. The smallest avocado tree recorded to grow fruit was only about 7-8 ft, which is about 2 meters, not particularly small, but still shocking.



Lets now move onto the leaves and trunk.

The strange thing about avocado trunks, is that they can differ majorly in size and texture, some can be wrinkly, others smooth, and others covered in mini white spots. So it's pretty hard to explain, or sum up due to the dozens of different species, so let's move on to the leaves.



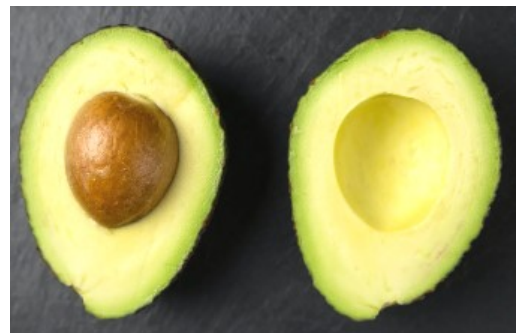
Avocado leaves are small to medium in size, averaging 4-10 centimeters wide and 10-30 centimeters long. They have an oval shape, with a point at the top. The top of the leaf is dark green and leathery, while the bottom of the leaf is light-green to brown. They have pretty clear veins and are slightly curled.

Last but not least comes the avocado itself. As we all know an avocado is a bright green fruit with a large pip in the middle. It is covered in a dark leathery skin. It can also be called an alligator pear or butter fruit.



Why not sum it all up with some fun facts!

- ◆ Did you know that the Mayans were the first people to make guacamole?
- ◆ Avocados are in the same family as cinnamon!
- ◆ The word "guacamole" comes from the Aztec word ahuacamolli, which translates to "avocado soup" or "avocado sauce."
- ◆ And lastly, people often think that avocados are vegetables, funnily enough, avocados are actually fruits! Even weirder, avocados are berries and are in the same family as sassafras and the bay laurel.



## Advertising



# C & G MOTORS

- Servicing
- MOT's
- Repairs
- Tyres & Tracking
- Exhaust Systems

- Diagnostics
- Air-con Re-gas (R134A & R1234YF)
- Welding
- FREE Safety Check Over .... And much more!

## 01491 652971

UNIT 3 WESTFIELD FARM, WESTFIELD ROAD, CHOLSEY, OX10 9LS

For advertising contact:  
Emma Reynolds at  
[reynolds743@btinternet.com](mailto:reynolds743@btinternet.com)  
Deadline for November edition:  
Wed, 25th October 2023

### BABYSITTING

Reliable and enthusiastic teenagers available.  
Tom, Ella and Jake Beardmore-Gray



One of them is sure to be free!  
Mobile: 07710 325604

Busy Baskets Nursery trading as:





*A multitude of varieties & colours of bedding, basket, border and patio plants all grown on the nursery*

**Purely Plants**

*Best selection of Winter/Spring flowering Pansies*

*Basket & Container Planting Service*

Autumn Season Sept - Nov • Open 7 days a week 10am - 5pm  
142a Wantage Road, Wallingford, OX10 0LU.

**01491 833 831** [www.purelyplants.co.uk](http://www.purelyplants.co.uk)



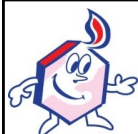
Fullers Road, Aston Tirrold Oxfordshire OX11 9EN  
matt@chequersgarage.demon.co.uk  
www.chequersgarage.com

At Chequers Garage we look after our customers as well as their cars. That's why we have courtesy cars, offer local collection and delivery and every car is washed before it is returned - not only will your car run well, it will look great too!



**MOT SERVICE**  
**TYRES AIR CON**

**CALL 01235 850347**



## **DIDCOT CALOR & PAVING CENTRE**

**RICH'S SIDINGS, LOWER BROADWAY,  
DIDCOT, OX11 8AG**

**TEL: 01235 814186**

**Email: [sales@didcotcalor.co.uk](mailto:sales@didcotcalor.co.uk)**

**OPEN MON - FRI 8.30am - 5pm, SAT 9am-4pm**

**BRADSTONE, NATURAL PAVING &  
STONEMARKET STOCKISTS SPECIALISING IN  
NATURAL SANDSTONE & LIMESTONE, GRANITE &  
PORCELAIN PAVING SLABS**

**SAND - BALLAST - SHINGLE (bulk load available)  
COBBLES - DECORATIVE CHIPPINGS**

**PRE PACKED COAL & SMOKELESS FUEL - LOGS &  
KINDLING - ROCK SALT - SALT FOR DISHWASHERS &  
WATER SOFTENERS**

**DOMESTIC & INDUSTRIAL GASES -  
HELIUM FOR PARTY BALLOONS**

**GRANGE FENCE PANELS**

## **CHAUCERS picture framing**

High quality framing at realistic prices.

Huge selection of frames & mounts.

Conservation materials &  
speciality glass.  
Restoration & cleaning.

Free quotes & guidance, no obligation

**01491 652984**

Web: [www.chaucersframing.co.uk](http://www.chaucersframing.co.uk)  
Email: [sallie@chaucersframing.co.uk](mailto:sallie@chaucersframing.co.uk)



**ANDRESA**  
AESTHETICS



## **Lunchtime Laser Facelift**

Smoother, brighter, tighter skin with  
the new 4D laser facelift

### **Beautiful, natural looking results**

- A more youthful appearance without surgery
- Lifts and tightens
- Firmer, plumper skin
- Increased volume & smoothness, reduction in deep lines
- Clearer complexion
- Ongoing results for many months

**1st treatment free\***

\*Ts & Cs apply see website

Andresa Aesthetics Exclusive Skin Health and Laser Clinic  
Tel: 01635 800183 [info@andresa.co.uk](mailto:info@andresa.co.uk) [www.andresa.co.uk](http://www.andresa.co.uk)  
Lower Wasing Barn, Wasing Lane, Nr Woolhampton RG7 4LY



**Last session  
of 2023!**



## **CHOLSEY REPAIR CAFE**

**Sat. 18<sup>th</sup> Nov. 2023**

11 am to 1.45 pm at Cholsey Pavilion.

**Bring along your broken item and a team  
of volunteers will try to help you mend it**

Subject to availability of volunteer specialists or equipment on  
the day, we may be able to offer help with: -

- ✓ bicycles
- ✓ electricals
- ✓ laptops/computers
- ✓ clocks
- ✓ mechanical problems
- ✓ clothing and textiles
- ✓ specialist gluing
- ✓ tool & knife sharpening
- ✓ PAT testing
- ✓ gardening equipment

**[www.cholseyrepaircafe.com](http://www.cholseyrepaircafe.com)**

+ Cholsey Repair Cafe on Facebook

### **PWG TREE SURGERY**



- Tree Felling
- Stump grinding
- Pollarding
- Deadwood & ivy removal
- Crown reductions
- Hedge Management & planting
- Reshaping & thinning
- Fruit tree pruning
- Tree Planting & supply
- Onsite tree milling
- Tree surveying & reports
- Bird, bat & owl boxes supplied & installed
- Mulch supplied for trees & borders
- Kiln dried logs supplied £75 per bulk builders bag


Contact : 07885552014

Office: 01491 652146

Email: [PWGTreeSurgery@gmail.com](mailto:PWGTreeSurgery@gmail.com)



Find us on  
**Facebook**



**BRIAN WINDSOR**

CARPENTRY, REPAIRS AND  
GENERAL MAINTENANCE

30 YEARS IN THE TRADE, JOBS CARRIED  
OUT IN A TIDY AND EFFICIENT MANNER

£25 PER HOUR

**PHONE: 07749197172**

### **Babysitting Service**

Reliable and experienced babysitters,  
available weekends and school holidays.



Contact Charlotte Reynolds on  
07904 475616



**Q1Care**

### **Are you searching for peace of mind?**

Put your loved one in our safe  
professional care. Call us for a free  
assessment and understand what  
we can do for YOU.

### **Join our amazing care team!**

Do you need a dose of the feel good  
factor? Please contact  
**[heloise.slater@q1care.co.uk](mailto:heloise.slater@q1care.co.uk)** for  
more information.

**Home Care across West Berkshire & South Oxfordshire**

Email us: [info@q1care.co.uk](mailto:info@q1care.co.uk) /

[heloise.slater@q1care.co.uk](mailto:heloise.slater@q1care.co.uk)

Call us: **0118 932 3865**

## Here to help you find and book the perfect holiday...



Arranging a holiday can be very frustrating and challenging. But with Full Circle Travel, it doesn't need to be.

- We are a local, independent travel agent with mature, professional and well-travelled consultants.
- You do not pay more for our service but get a lot more than booking direct.
- You can book with your favourite tour operator but book locally.
- We are ABTA and AITO members and ensure your money is safe in an uncertain world.
- We listen, we care and are passionate about finding you the perfect holiday.
- Search 'Full Circle Travel' at [www.trustpilot.co.uk](http://www.trustpilot.co.uk) to read what our clients say about us.

A selection of operators you can book with us at no extra cost to booking directly: **Club Med - Cox and Kings - Abercrombie and Kent - Mark Warner - Audley Travel - Explore - The Adventure Travel Company Royal Caribbean - Carrier - Western & Oriental - If Only - Beachcomber - Exodus - Kuoni - Viking River Cruises - Seabourn, Riviera Travel - Silversea - Regent Seven Seas - Classic Collection - Prestige Holidays**—plus many more

[www.fullcircletravel.co.uk](http://www.fullcircletravel.co.uk)

T: 01491 833227

Full Circle Travel, 59 St Marys Street, Wallingford, OX10 0EL

E: [holiday@fullcircletravel.com](mailto:holiday@fullcircletravel.com)

**4 Bed spacious villa, spectacular views, huge terraces, sumptuous beds available for holidays in**

### **La Manga Club, Spain**

3 golf courses, 28 tennis courts, 7 padel courts, fitness centre, spa, tennis, padel, cricket and football academies & coaching, cycling, scuba diving, snorkelling



*Beaches, sun loungers, restaurants, bars, books and just chilling by the pool*

**"A place to relax, soak up the sun, hit a ball or two and enjoy life..."**

Contact Sallie on 07887 975925  
[www.lamangaclub-villa.com](http://www.lamangaclub-villa.com)  
(under construction)  
[sallie@lamangaclub-villa.com](mailto:sallie@lamangaclub-villa.com)  
(Moulsford owners)

## Registered Osteopath

Mr Rohan Iswariah D.O.

For vouchers & information  
please visit our website at:

**[www.localosteopath.com](http://www.localosteopath.com)**



**01491-838866**

An Osteopathic approach to  
Treatment for Sports  
Injuries, Back Pain,  
Headaches, Joint Pains,  
Sciatica, Brachialgia,  
Arthritis, Tennis elbow,  
Pulled ligaments &  
Muscles, Musculoskeletal  
problems in general



Ivy Cottage|Chapel Lane|Benson|Oxon|OX10 6LU

## Useful Contacts

### Moulsford Parish Council

<http://www.moulsford-pc.org.uk>

Name	Address	Phone	E-mail
Sue Powell (Chair)	Laburnham Cottage, Moulsford	07786 250368	<a href="mailto:spowell@moulsford-pc.org.uk">spowell@moulsford-pc.org.uk</a>
Hilary Shaw (Vice Chair)	N/A	07880 732381	<a href="mailto:hshaw@moulsford-pc.org.uk">hshaw@moulsford-pc.org.uk</a>
Ben Partridge (Financial Officer)	22 Underhill, Moulsford	07828 902947	<a href="mailto:bpartridge@moulsford-pc.org.uk">bpartridge@moulsford-pc.org.uk</a>
Martin Eagle	Glebe Orchard, Glebe Close, Moulsford	07785 905883	<a href="mailto:meagle@moulsford-pc.org.uk">meagle@moulsford-pc.org.uk</a>
Melanie Mousley Jones	N/A	07813 092239	<a href="mailto:mmousleyjones@moulsford-pc.org.uk">mmousleyjones@moulsford-pc.org.uk</a>
Andrew Harris (Parish Clerk)	Offlands Cottages, Moulsford	N/A	<a href="mailto:parishclerk@moulsford-pc.org.uk">parishclerk@moulsford-pc.org.uk</a>

Please report any traffic and parking issues experienced to: [trafficandparking@moulsford-pc.org.uk](mailto:trafficandparking@moulsford-pc.org.uk)

### South Oxfordshire District Councillors

Anne-Marie Simpson	Mallards, Moulsford, Wallingford, Oxfordshire, OX10 9HR	07738 568907	<a href="mailto:Anne-Marie.Simpson@southoxon.gov.uk">Anne-Marie.Simpson@southoxon.gov.uk</a>
Ben Manning	45 Greenmere, Brightwell-cum-Sotwell, OX10 0QH	07946 476733	<a href="mailto:Ben.Manning@southoxon.gov.uk">Ben.Manning@southoxon.gov.uk</a>

### Oxfordshire County Councillor

Felix Bloomfield	The Views, Ewelme, OX10 6HF	07912 875199	<a href="mailto:felix.bloomfield@oxfordshire.gov.uk">felix.bloomfield@oxfordshire.gov.uk</a>
------------------	--------------------------------	--------------	--

These hire rates apply from 1st April 2023 until revised by the Pavilion Management Committee.

To make or enquire about a booking please contact the Bookings Secretary.

Email: [moulsfordbookings@gmail.com](mailto:moulsfordbookings@gmail.com)

Phone: 07707 068151

### MOULSFORD PAVILION HIRE RATES 2023/24

	Village Residents	Non Village Residents or Commercial
WEEKDAYS Monday-Friday to 6.00pm hourly fee	£14	£17
WEEKDAYS Monday-Friday after 6.00pm hourly fee	£16	£22
WEEKENDS Saturday 9.00am-Sunday 10.00pm	£18	£25
WEDDINGS Inc Friday Night-Sunday 12.00pm	£725	
WEDDINGS Exc Friday Night-Sunday 12.00pm	£650	
CHANGING ROOMS	ON REQUEST	

## Dates for the Diary

Date	Event	Location
7th October	Comedy Night	Moulsford Pavilion
11th October	10:30 Coffee Shop	Moulsford Pavilion
14th October	19:30 Quiz Night	Moulsford Pavilion
8th November	10:30 Coffee Shop	Moulsford Pavilion
13th December	10:30 Coffee Shop	Moulsford Pavilion
15th December	Christmas Gala	Beetle & Wedge
22nd December	Christmas Social	Moulsford Pavillion
24th December	17:00 Light the Way to Christmas Day	St John the Baptist
26th December	Boxing Day Walk	TBC