

Whitchurch South Ward



Key Facts

Total Population **4,409 (2015)**

Area **4,338** hectares

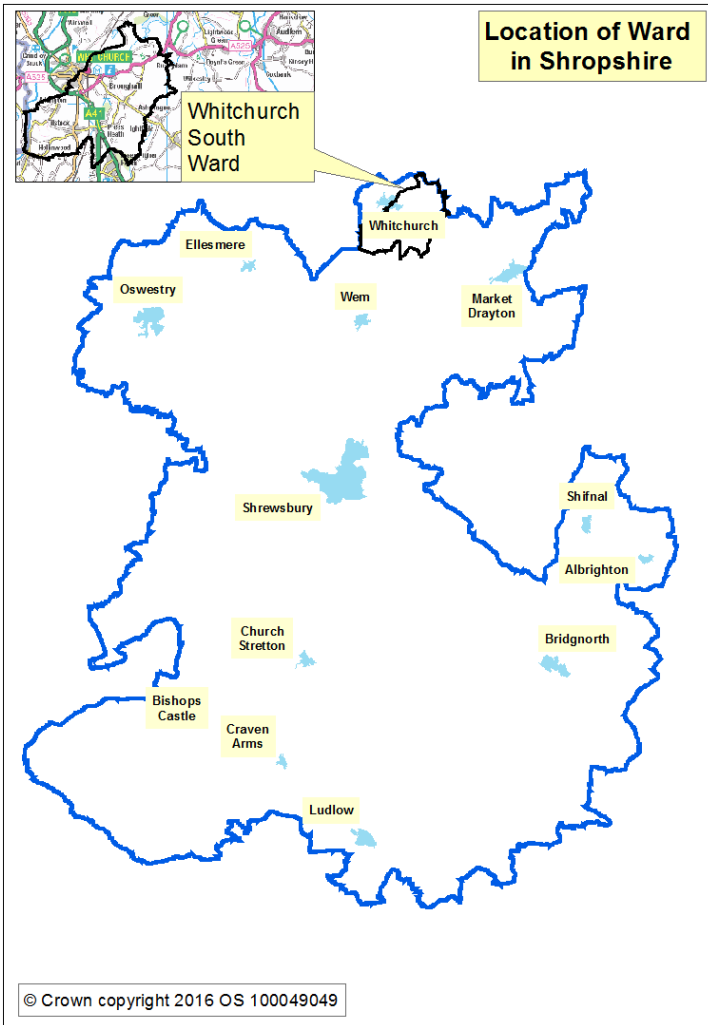
Population Density **1.0** (Shropshire average **0.96**)

Average Age **42.9**

Total Households **1,761**

Total Dwellings **1,811**

Source: 2011 Census, Office for National Statistics ©
Crown Copyright 2016



© Crown copyright 2016 OS 100049049

Ward Councillor - Gerald Dakin
Conservative

gerald.dakin@shropshire.gov.uk



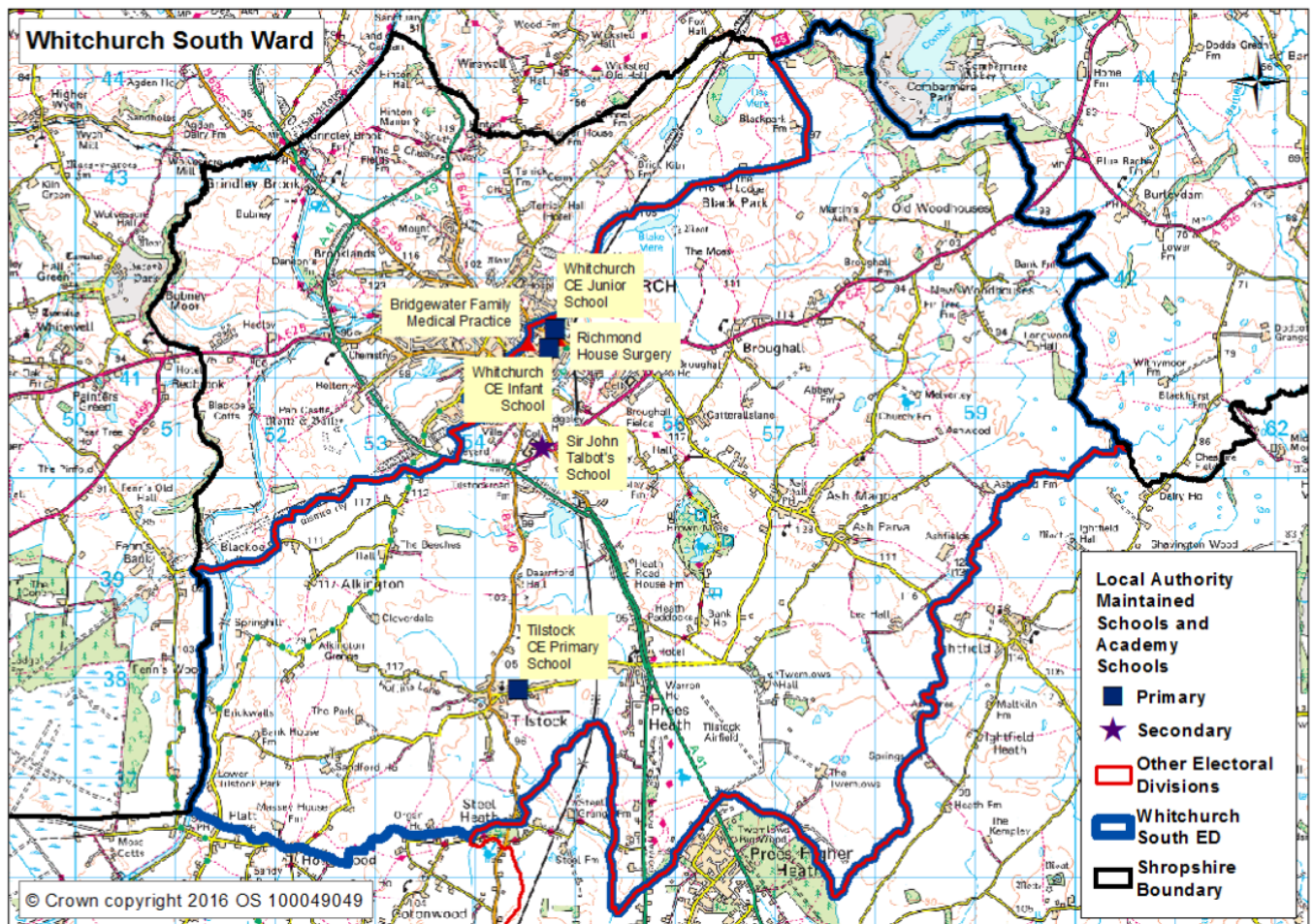
Election Results - May 2017

Name	Party	Votes
Gerald Dakin	Cons	422
Andrea Allen	UKIP	132
William Hilton	Indep	92
Thomas Thornhill	Lib Dem	156

Parliamentary Constituency - North Shropshire

MP - Owen Paterson, Conservative

Population and Diversity



Whitchurch North Ward is located in the north of Shropshire. The ward is predominantly rural in nature with urban areas to the north of the ward. It contains a mixture of housing in terms of age and type and it has a population density similar to Shropshire as a whole. The town centre of Whitchurch is well served for shops and other amenities. There is good access to the A49 towards Shrewsbury and Cheshire. Whitchurch has a train station providing access to onward travel from Shrewsbury and Crewe.

For more information and interactive maps please visit Shropshire Council website :

www.shropshire.gov.uk/maps

For further information please visit : www.shropshire.gov.uk/facts-and-figures

Email research@shropshire.gov.uk

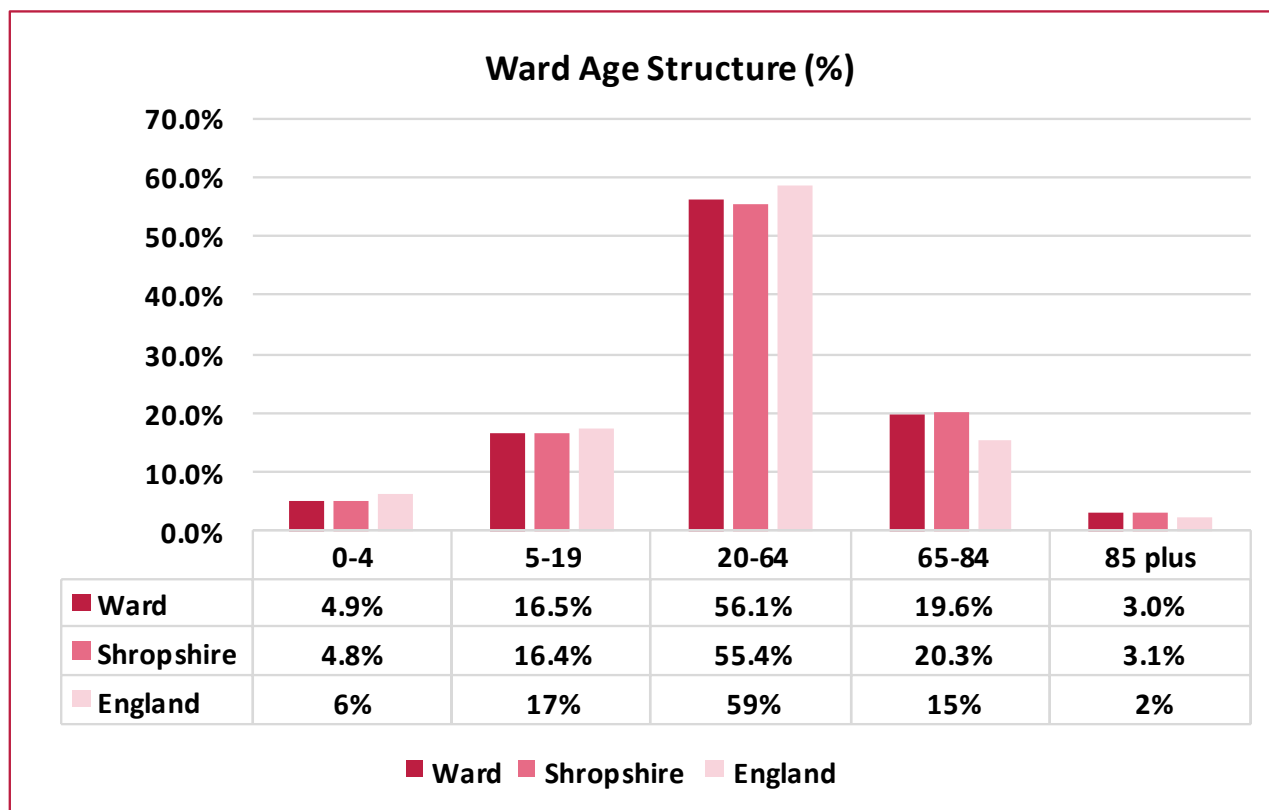
Other useful websites:

www.nomisweb.co.uk

www.ONS.gov.uk

Population and Diversity

Age Structure



Source: Office of National Statistics (ONS) Mid Year Estimates, 2015 - Ward Level Mid Year Population Estimates, Experimental Statistics 2016.



Mid year estimates for **2015**

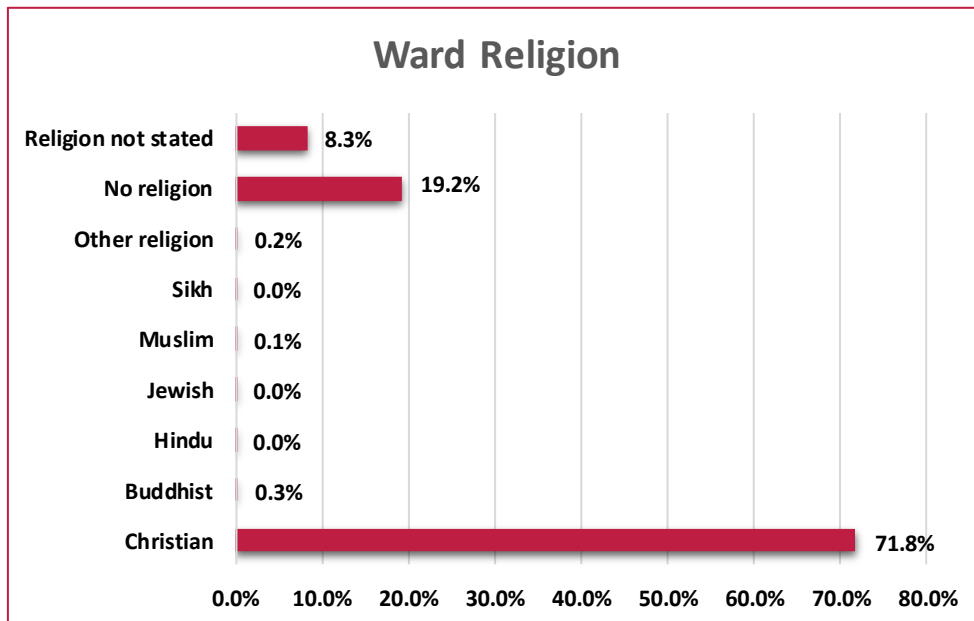
49.8% female and **50.2% male**.

Whitchurch South has a **similar** rate of people aged **0- 4** and **5 to 19**, compared to **Shropshire**.

Whitchurch South has a **similar rate of older people**, aged 65-84 and 85 plus, as Shropshire but **higher than** England.

Population and Diversity

Religion



71.8% of People were Christian. 19.2% had no religion. Levels of other religions were low and similar to Shropshire, but lower than national levels.

Source: 2011 Census, Key Statistics, Office for National Statistics (ONS).

	Christian	Buddhist	Hindu	Jewish	Muslim	Sikh	Other religion	No religion	Religion not stated
Shropshire	68.7%	0.3%	0.1%	0.0%	0.3%	0.1%	0.4%	22.8%	7.3%
England	59.4%	0.5%	1.5%	0.5%	5.0%	0.8%	0.4%	24.7%	7.2%

Ethnicity

96.5% of People were White British, higher than both Shropshire and England.

Fewer people from minority groups compared to both England and Shropshire. Lower percentage of all minority ethnic groups than for Shropshire as a whole.

Area	White	White: British	Mixed/ multiple	Asian/Asian British	Black/African/ Caribbean/ Black British	Other ethnic group	Total BME
Whitchurch South	98.9%	96.5%	0.5%	0.4%	0.0%	0.1%	1.0%
Shropshire	98.0%	95.4%	0.7%	1.0%	0.2%	0.1%	2.0%
England	85.4%	79.8%	2.3%	7.8%	3.5%	1.0%	14.6%

For further information on population or other Census data please visit:

<https://www.nomisweb.co.uk/>

<https://shropshire.gov.uk/facts-and-figures>

<https://www.ons.gov.uk/>

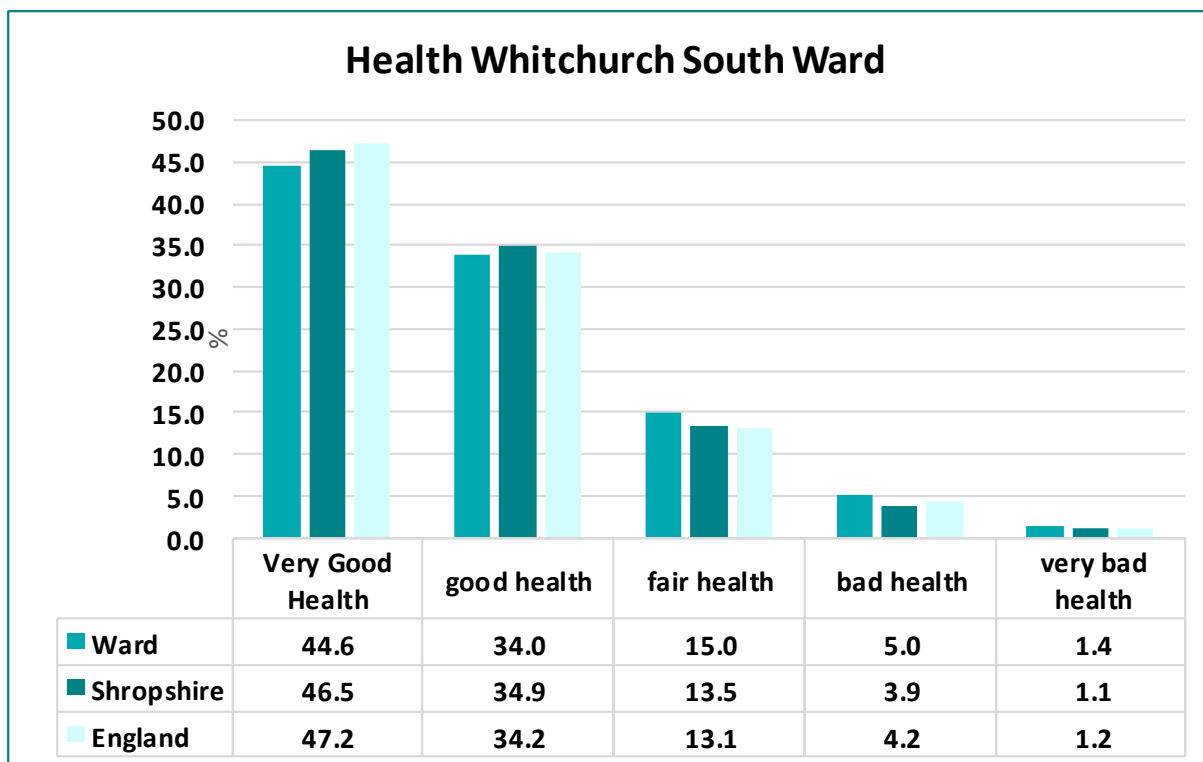
Health

Long Term Limiting Illness

10.9 % of People had a **Long Term Health Problem or Disability** which Limited their Life a lot. Higher than the **Shropshire** average of **8.4%**.

Source: 2011 Census, Key Statistics, Office of National Statistics (ONS).

Health Condition



At the time of the 2011 Census, **79% of residents** in Whitchurch South Ward, said that they felt they were **in very good or good health**. This was **lower** than the Shropshire and England **average of 81%**.

Provision of Social Care

	Provide 1 to 19 hours unpaid care a week	Provides 20 to 49 hours unpaid care a week	Provides 50 or more hours unpaid care a week
Whitchurch South	6.4%	1.7%	2.9%
Shropshire	7.5%	1.3%	2.4%
England	6.5%	1.4%	2.4%

6.4% of people provided in Whitchurch South Ward **unpaid care for 1-19** hours per week, this was **lower** than **Shropshire as a whole**.

Qualifications and Jobs

Qualifications

Qualifications	Ward	Shropshire	England and
Level 1	17.7	15.4	15.2
Level 2	19.8	19.4	17.2
Level 3	13.8	14.7	14.5
Level 4/5	24.1	29.4	29.7
Other qualifications	7.8	7.1	8.6
No qualifications	16.8	14	15

According to the Census 2011, **24.1%** of residents had a level 4 qualification or above, fewer than Shropshire average of **29.4%**. There were more residents with low level qualifications than for Shropshire as a whole. **16.8%** had no qualifications compared to Shropshire figure of **14.0%**.

Source: 2011 Census, ONS, Highest Level of Qualification Population aged 16-64.

For further information on qualification levels and definitions visit Office of National Statistics (ONS)
<http://www.ons.gov.uk/employmentandlabourmarket/peopleinwork/employmentandemployeetypes/articles/qualificationsandlabourmarketparticipationinenglandandwales/2014-06-18#background-notes>

Economic Activity

The employment status of Whitchurch South residents at the time of the 2011 Census showed **79.9%** of residents were economically active (this includes people who are both employed and actively seeking employment), this was very similar to the Shropshire figure of **80.1%**. Of those who were economically active **74.8%** were in employment, **13.9%** were self-employed and **5.1%** were unemployed. This is compared with **75.8%**, **13.5%** and **5.4%** respectively for Shropshire.

20.1% of residents were economically inactive (these are people who are not seeking a job, and include those who are retired, full time students, looking after family or long term sick). This figure was almost identical to the Shropshire level of **19.9%**.

Unemployment

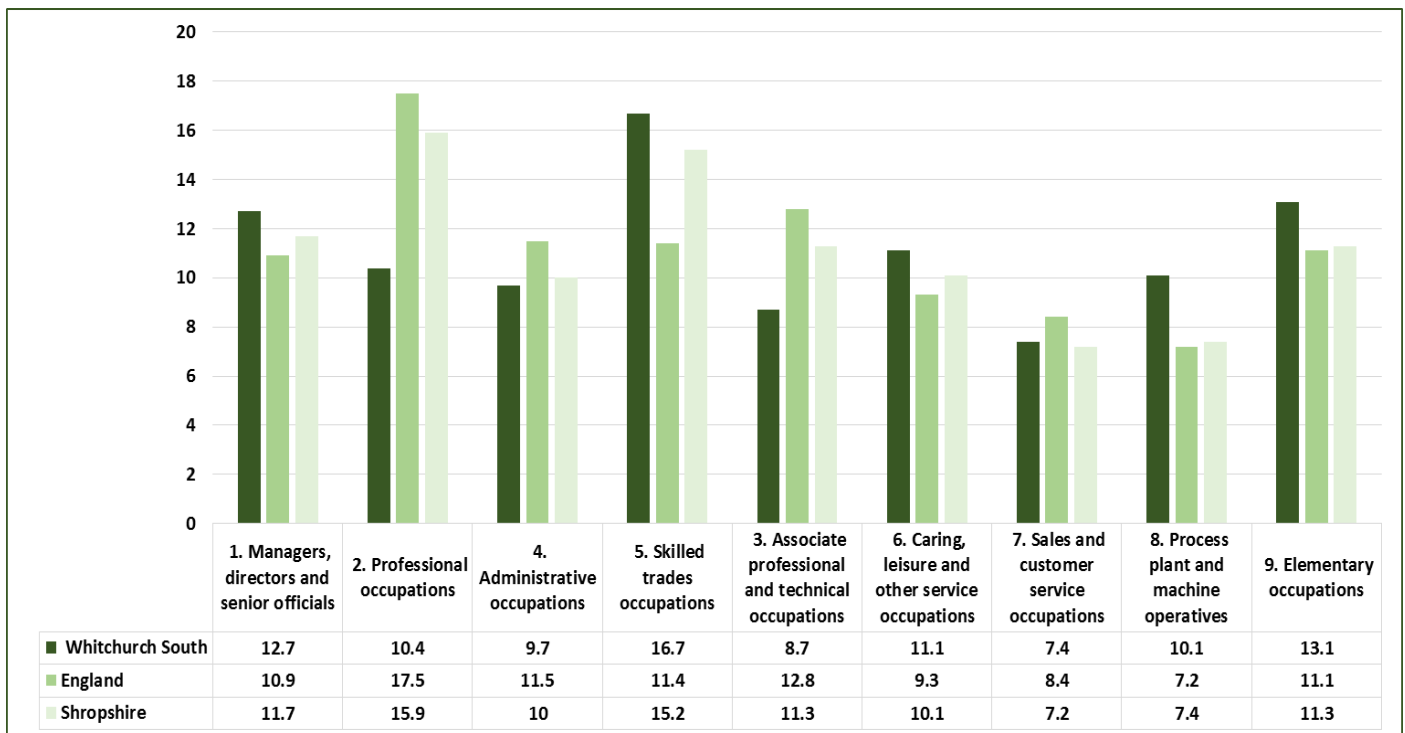
The Jobseeker's Allowance (JSA) is payable to people under pensionable age who are available for, and actively seeking work. In October 2016 **1.5%** of resident people aged 16-64, were claiming JSA, this was higher than the Shropshire figure of **1.1%** but lower than the **1.8%** for Great Britain.

For more information please visit:

<https://www.nomisweb.co.uk/>
<https://www.nomisweb.co.uk/reports/lmp/la/contents.aspx>

Qualifications and Jobs

Employment by Occupation



Businesses and Employment

- **2,000** jobs in the ward
- **239 businesses** (Source: Mint 2015)

- **10.1 %** of residents were employed in Process plant and machine operatives (greater than for Shropshire as a whole **7.4%**)
- Fewer people work in Professional occupations, **10.4%** compared to **15.9%** for Shropshire

Travel to Work

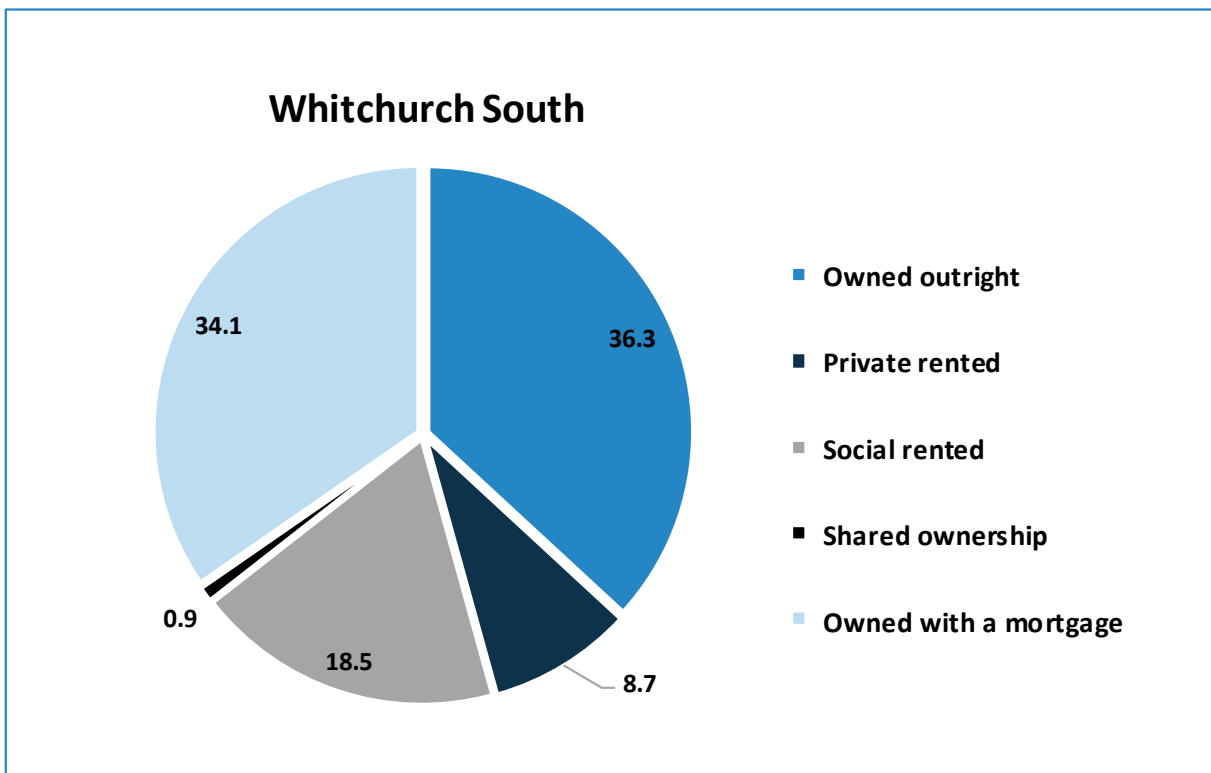
- **13.5%** of residents were self employed
- **5.5%** work from home (compared to **5.6%** for Shropshire)
- **49.4%** use the car as main travel mode to work
- **1.4%** used public transport

Housing

1,811 Dwellings and 1,761 Households

9 Communal Establishment with 119 residents

Housing Tenure



Source: 2011 Census, Key Statistics, Office for National Statistics, © Crown Copyright 2017.

The largest proportion (**36.3%**) of houses in Whitchurch South Ward were owned outright. This was fewer than for Shropshire (**38.6%**). **18.5%** of households were social rented housing, this was greater than for Shropshire as a whole (**13.5%**) and for England (**17.7%**). Fewer households in Whitchurch South Ward were private rented (**8.7%**) compared to **15%** for Shropshire.

Housing Type

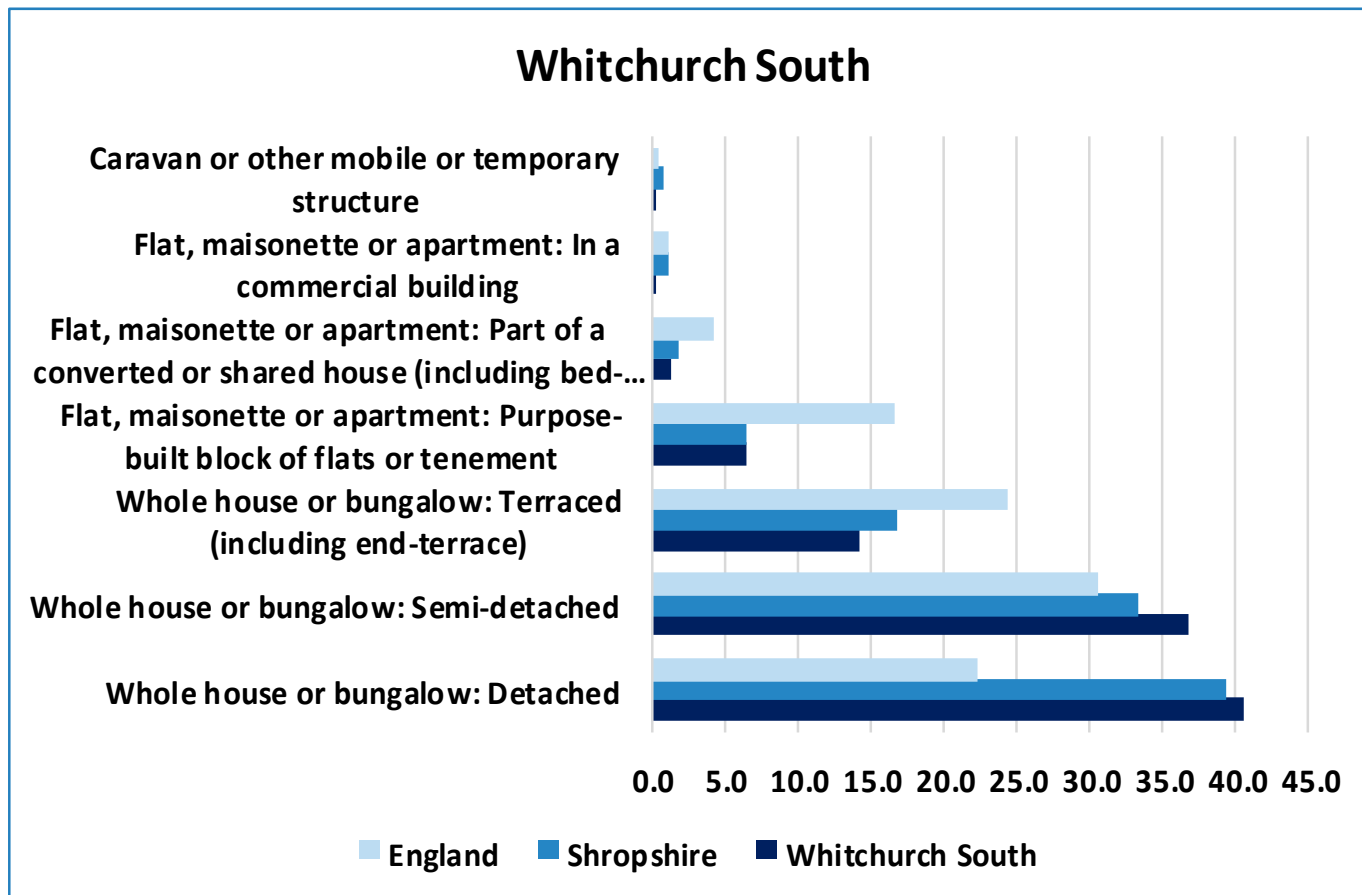
A greater number of Whitchurch South household spaces were detached properties (**40.6%**) compared to Shropshire as a whole (**39.5%**).

A greater number of household spaces were semi-detached (**36.8%**) compared to Shropshire as a whole (**33.4%**).

Fewer household spaces in Whitchurch South Ward were terraced (including end-terrace), (**14.2%**) compared to Shropshire (**16.8%**).

Housing

Housing Type



Housing Composition

25.4% of households were One Person Households lower than the Shropshire average (**28.9%**) and England (**30.2%**).

4.6% of households were Lone Parent with dependent children lower than the Shropshire average (**5.2%**) and England (**7.1%**).

13.4% of households were One Person Pensioner aged 65 and over, lower than the Shropshire average of (**13.9%**) but greater than England (**12.4%**).

16.9% of households were married couples with dependent children greater than the Shropshire average of (**14.9%**) and England (**12.3%**).

4.7% of households were co-habiting couples with dependent children greater than the Shropshire average of (**4.2%**) and England (**4.1%**).

Community Safety

Crime levels in Shropshire are **very low compared to national levels**. Crime and ASB are **low** in Whitchurch South Ward. Relative to the rest of Shropshire, Whitchurch South had the **33rd highest crime rate** per 1,000 population of all **63** Shropshire Wards.

Crime per 1000 Population in Whitchurch South Ward was **37.2**, **lower than Shropshire average** of **44.9** and **lower** than England and Wales **78.4**.

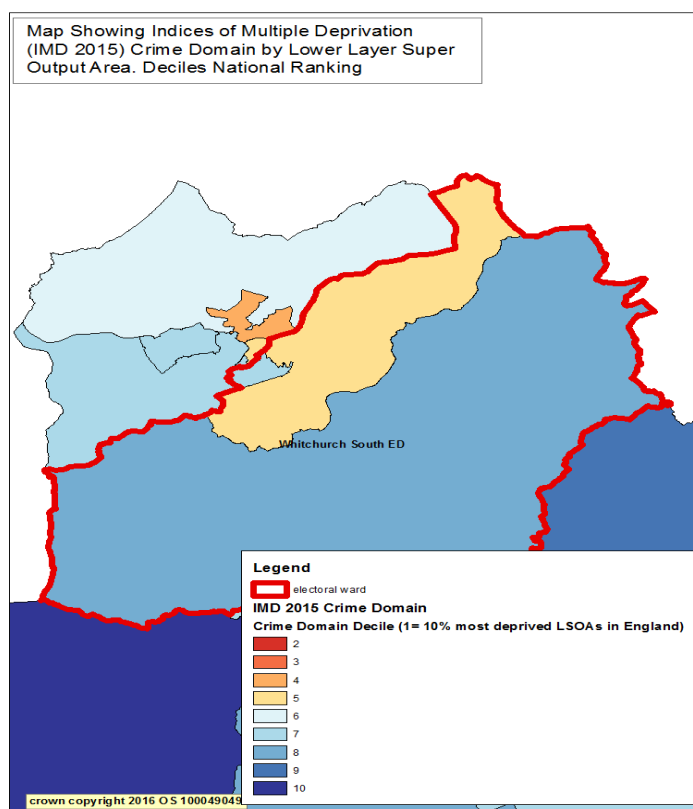
Source: Police Recorded Crime Data and Crime in England and Wales Statistical Bulletin, ONS, July 2016, year end 2016

IMD 2015 Crime Domain

The **Crime Domain measures** the **risk** of personal or material **victimisation** at local level.

The indicators:

- The rate of **violence** per 1,000 at risk population
- The rate of **burglary** per 1,000 at risk properties
- The rate of **theft** per 1,000 at risk population
- The rate of **criminal damage** per 1,000 at risk population



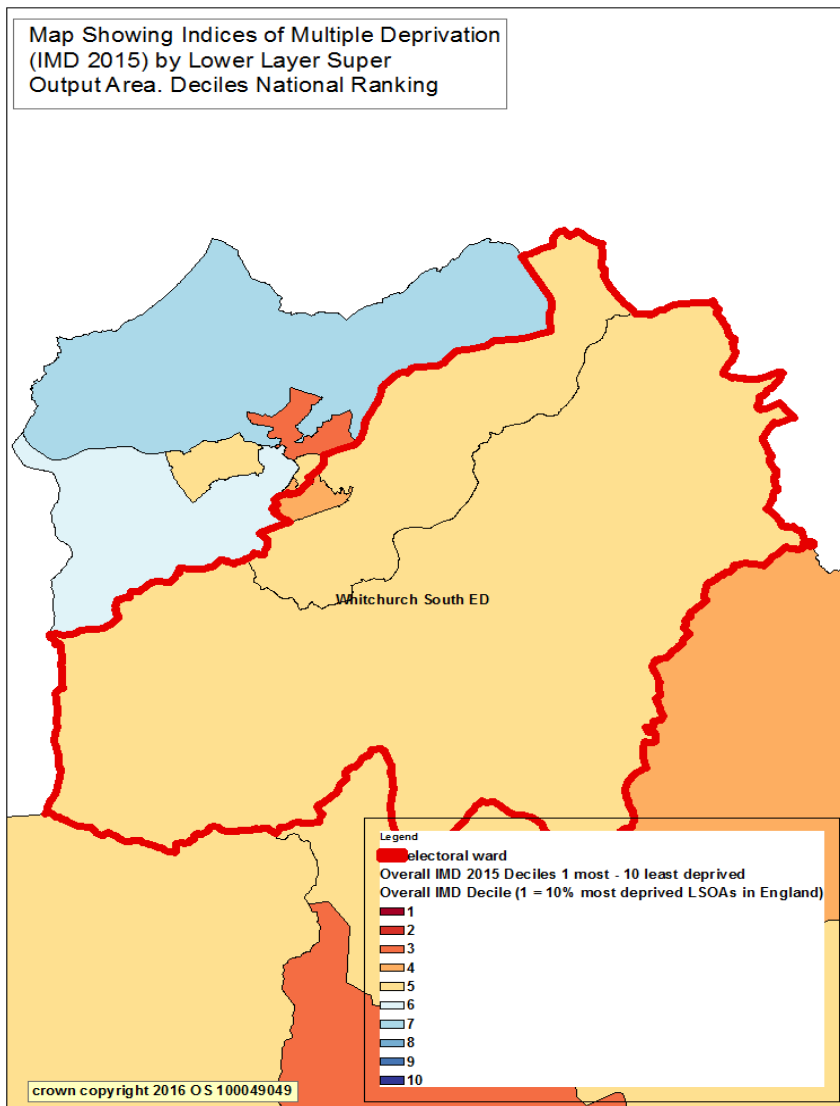
Whitchurch South Ward has **low levels of crime** compared to national rankings.

When looking at the three lower super output areas (Ilsoa's) which cover the ward. Two of them are within the **deciles 8 and 7** one of them is in **decile 5** (decile one being the highest, decile 10 being the lowest) when compared with national levels.

Index of Multiple Deprivation (IMD 2015)

Index of Multiple Deprivation (IMD 2015) is designed to identify areas where communities lack resources and are in need. To do this, seven factors are considered, which are:

- Income deprivation
- Employment deprivation
- Health deprivation and disability
- Education deprivation
- Barriers to housing and services
- Crime
- Living environment deprivation



There are **3** Lower layer Super Output Areas (LLSOA) which partially cover Whitchurch South Ward.

These areas fall into the **5th** and **4th** least deprived deciles nationally.

Source: IMD 2015, Department for Communities and Local Government, Crown Copyright, 2016.