

## Almonry Development Working Group

## Notes from a videoconference on 22 July 2020

**Present:**

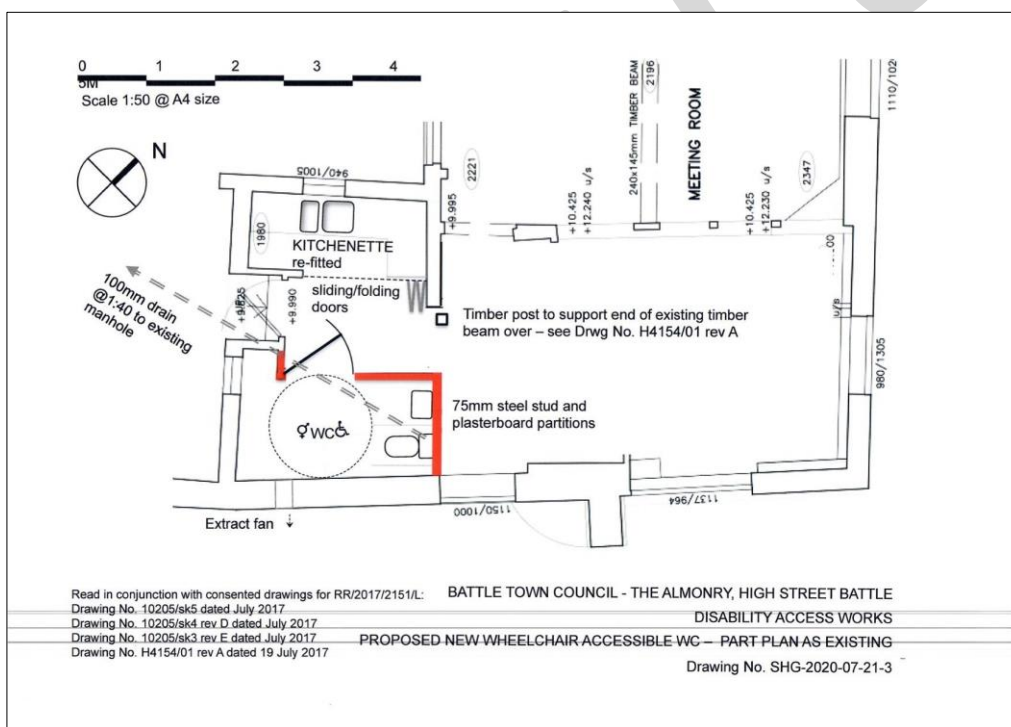
Cllrs Favell, Kiloh and Sharman, Stephen Gray, Town Clerk

### Accessible toilet

Several plans for an accessible toilet had been offered by members of the Working Group in an attempt to ensure the privacy and modesty of users. SG provided a solution for discussion.

By installing a folding screen across the kitchenette area, sufficient privacy would be provided to satisfy the working group. The WC will be positioned to enable access from both sides.

SG will write the application for Listed Building consent. (Thank you so much, Stephen.)



## Other toilet provision

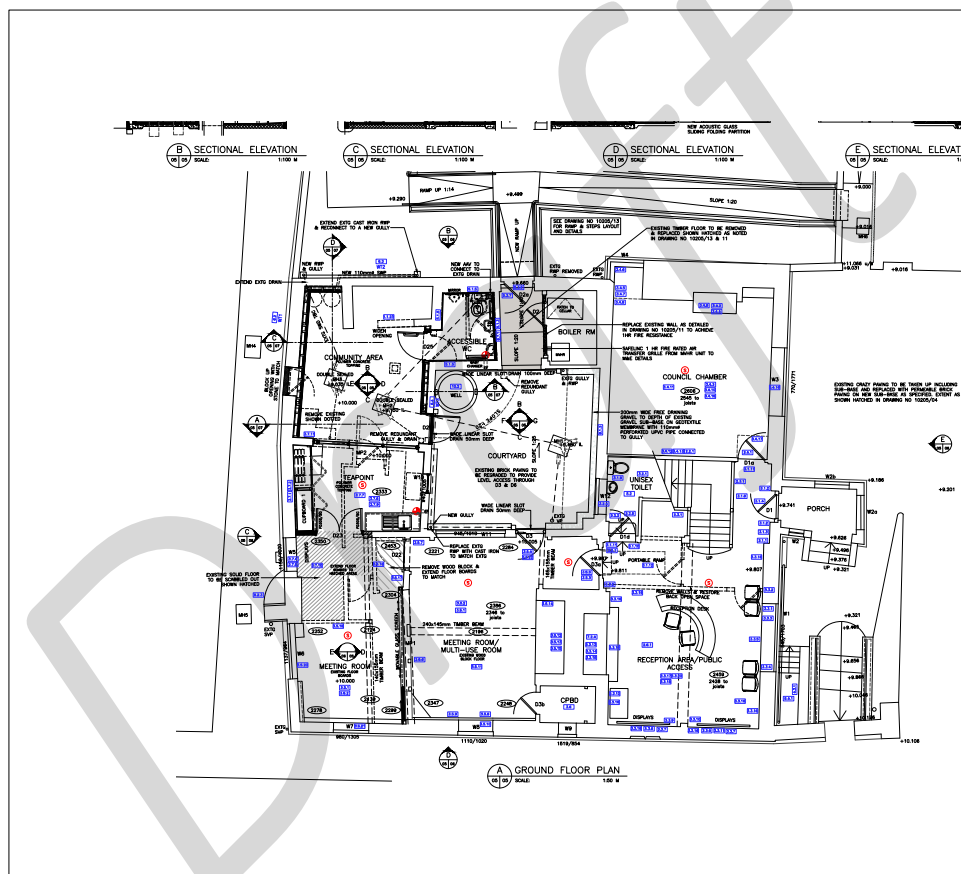
In order to ensure adequate provision for when the site is being used to capacity, it had been agreed that the Working Group would recommend to Council that the outside toilet is given a face-lift to provide two basic WC cubicles. This facility would then also be available for the use of visitors to the garden and the Museum. However, SG now believes that the three toilets (two on the ground floor and one on the first floor) should be sufficient. Council may decide to undertake a basic face-lift of the outside toilet within the current works or leave it for a later phase.

## Access

SG summarised the options available:

- 1 Ramped approach from rear garden via courtyard
- 2 Ramped approach from front garden to existing entrance
- 3 Ramped approach for High Street Gate to existing entrance
- 4 Platform lift behind porch
- 5 Do nothing – alterations not reasonable

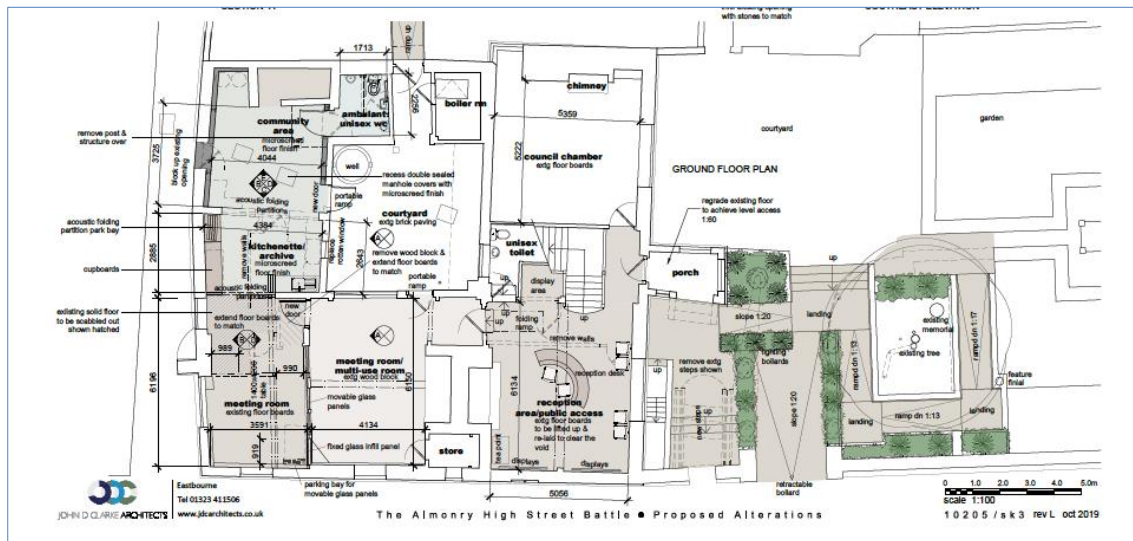
### Ramped approach from rear garden via courtyard



This design was approved by Council in 2019 and the cost was provided in the tender.

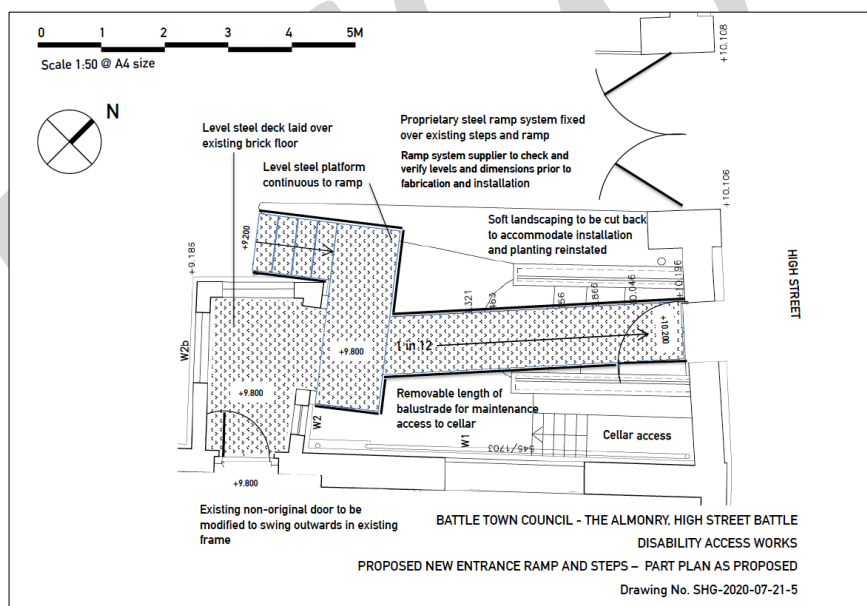
If chosen as the preferred access, people with disabilities requiring its use would be using a different access to the majority of visitors.

## Ramped approach from front garden to existing entrance



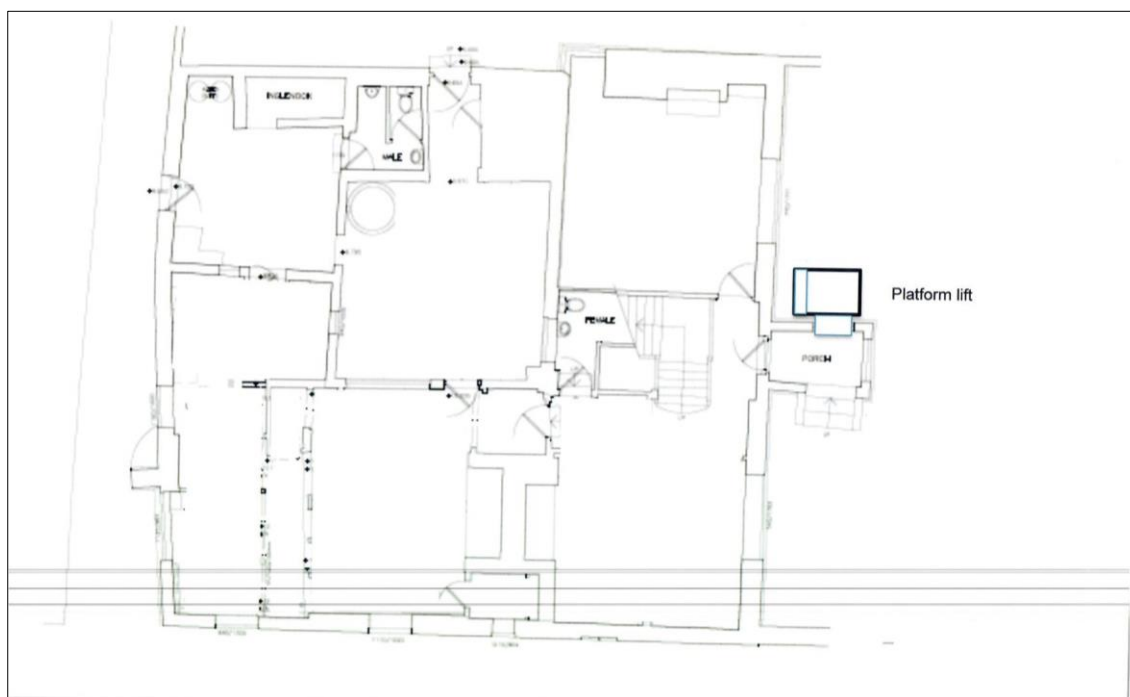
This design was rejected by Council in 2019.

## Ramped approach for High Street Gate to existing entrance



The 1 in 12 ramp is just acceptable. Visitors needing level access will need to go back to the High Street and use the driveway to access the Museum from The Almonry. Visitors unable to negotiate a slope will not have stepped access from the High Street, although there are steps from The Almonry to the sloping driveway.

## Platform lift behind porch



This solution had previously been discounted as unfeasible, partly due to the surface and steepness of the driveway from the High Street. However, SG will draw up a plan to raise the level of the porch floor, re-hang the main door to open outwards and install an enclosed lift.

The removal of the partition in the hall by the stairs, as in the plans that have already received Listed Building consent, would not only give a feeling of space, but, more importantly, add light for visually impaired people.

### **Recommendations for access:**

The Working Group recommends the lift option to Council.

The level access from Western Avenue could be installed in a second phase in order to give level access to The Almonry through the courtyard and also to the Museum and the garden.

Once Council has agreed upon the access, SG will write the application for Listed Building consent. (Again, many thanks, Stephen.)

### **Other recommendations**

Removal of artex not to be included in works (SG advises that this can do more damage than good, and would look better painted in a colour other than brilliant white. It could also be covered over.)

The floor level in the WC under the stairs should be brought up to make an ambulant disabled toilet (will need planning permission)

The ramp to the current meeting room can then be combined with a ramp to access the WC. Although a removable ramp, it could be left in place long term.

The kitchen should be fitted out with new units.

Some amendments to the specification of works were made.

**Next meeting:** to be agreed

Draft