



THE STOCKBURY & SOUTH GREEN OBSERVER

'In the Garden of England'

March '19 Diary

All events at the Memorial Hall unless otherwise stated

Fri	1st	Dancing Club	8.00 - 10.30pm
Sat	2nd		
Sun	3rd	Dog Club - Field	10.00 - 11.00am
Mon	4th		
Tues	5th	Bowls	2.00 - 4.00pm
		NSYC	7.30 - 9.30pm
Wed	6th	Pilates	9.30 - 10.30am
Thurs	7th	Gardeners	8.00 - 10.00pm
Fri	8th	Dancing Club	8.00 - 10.30pm
Sat	9th		
Sun	10th	Dog Club - Field	10.00 - 11.00am
Mon	11th		
Tues	12th	Bowls	2.00 - 4.00pm
Wed	13th	Pilates	9.30 - 10.30am
		W.I.	2.00 - 4.00pm
Thurs	14th		
Fri	15th	Dancing Club	8.00 - 10.30pm
Sat	16th		
Sun	17th	Dog Club - Field	10.00 - 11.00am
Mon	18th		
Tues	19th	Bowls	2.00 - 4.00pm
		NSYC	7.30 - 9.30pm
Wed	20th	Pilates	9.30 - 10.30am
		Sew & Chatter	2.00 - 4.00pm
		Parish Council	7.30 - 9.30pm
Thurs	21st	Bowls	7.30 - 9.30pm
Fri	22nd	Dancing Club	8.00 - 10.30pm
Sat	23rd		
Sun	24th	Dog Club - Field	10.00 - 11.00am
Mon	25th		
Tues	26th	Bowls	2.00 - 4.00pm
Wed	27th	Pilates	9.30 - 10.30am
Thurs	28th		7.00 - 9.00pm
Fri	29th	Dancing Club	8.00 - 10.30pm
Sat	30th		
Sun	31st	Dog Club - Field	10.00 - 11.00am

STOCKBURY CHURCH MONTHLY DRAW

Supporting the Stockbury Church Fund

ACT NOW!

Before **Friday 8 March**:

- **complete** an application form (available from Angela Brown at the MB Farms post office or see the back of The Observer)
- **pay** the £10* per ticket by either cash or cheque to:
 - Angela in the post office or
 - Emma Charlesworth, 10 Hempstead Lane, Bapchild, Sittingbourne, Kent, ME9 9BH.
- *NB: Cheques should be made payable to Stockbury Church PCC.*

**£10 guarantees you entry for 10 monthly draws*

*First draw will be on **Saturday 9 March**, and then the second Saturday of every month until December.*

Entry form on the back page of The Observer!

**ROAD
AHEAD
CLOSED**



Temporary Road Closure

Forge Lane, Bredhurst – from 11 March 2019 for up to 5 days

The road will be closed between both junctions with Dunn Street Road and “Pembles”.

The alternative route is via Dunn Street Road, Lidsing Road and vice versa.

The closure is to enable a new electric supply to be carried out by UK Power Networks.

Tomsett Kent

Vehicle Maintenance and MOT Centre

Repairs • MOTs • Hybrid • Electric
Servicing • Air Conditioning • Brakes



We MOT... Cars

Vans

Motorbikes

Motorhomes

Minibuses

Quads

Trikes

Three-Wheelers

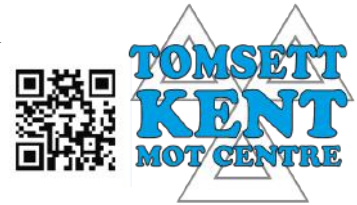
Now offering
**HYBRID
&
ELECTRIC**
Servicing and Repair

MONDAY– FRIDAY 8am – 5pm SATURDAY 8am – 12 noon

01795 841 007

CHURCH LANE (NEXT TO THE CHURCH), STOCKBURY, ME9 7RD

WWW.TOMSETTKENT.COM



KENT WASTE

The Paddock
Detling Hill
Maidstone
Kent
ME143JG
01622 630705

LIQUID WASTE DISPOSAL

DRAIN CLEANING, CESSPOOL EMPTYING, INTERCEPTOR WASTE,
OIL AND SLUDGE REMOVAL,

CAMERA SURVEYS, FORECOURT CLEANING, SEWAGE
TREATMENT PLANTS



Stockbury
Parish

Home Your Council Events Diary Local Businesses Village Info Observer More...

Welcome To The
Stockbury Parish Website



Council



Events



Diary



Local
Businesses



Village
Info



Observer

Visit Us At

www.stockbury.org.uk

You get more with the online

**Stockbury
Observer!**

St Mary Magdalene Church Stockbury



The services in March are as follows:

10th March - 3pm - House Communion
at The Old Vicarage

24th March - 3pm - House Communion
at the Old Vicarage.

Penny Stevens - PCC Secretary

Details of the range of services held within the benefice of the six parishes, to which Stockbury belongs, can be found on the parishes' website www.thesix.org.uk or contact the Rev'd Liz Cox

For baptisms, weddings or funerals please contact
The Rev'd Liz Cox on 01795 844241

Parish Council Cogitations

The Parish Council meets every month (7.30pm on the 3rd Wednesday) and is a public meeting. Apart from a small but dedicated band of people, very few Parishioners attend to air their views or to find out what actually goes on. I would be the first to admit that much of our business is pretty boring but we do discuss things that can have a real effect on everyone in Stockbury.

Rather than appeal for people to come to the meetings, or expect you to seek out the minutes on the Parish website, I thought that it might be useful to share some of the "highlights" in The Observer. If anything grabs your attention, you might like to chat with your nearest Councillor, or even come along to express your views. This is the first attempt and I would welcome feedback as to whether you find it useful, or not.

This month's meeting included:

The Stockbury Roundabout

We still have no news from Highways England about exactly what they intend to do, or when they intend to do it. Councillors have met with the project management team from Highways England in an effort to find a sensible compromise which will work for Stockbury residents and also had a meeting with Helen Whatley. The net result is that the process appears to have stalled once again and Highways England have told us that they are awaiting funding decisions from "above". Watch this space.....

Police

Our PCSO, Daniel Genn, is working on a list of concerns we gave him to develop a plan specifically for Stockbury. It will not surprise you to hear that we highlighted inappropriately driven vehicles, fly tipping, littering, air weapons and parking (mostly in Aerodrome Approach) on top of the usual issues around theft and security.

Fly Tipping

This is a serious problem which seems to be getting worse. Kent County Council are introducing charges at the waste sites they run on behalf of the Boroughs and, although we were assured by our KCC Councillor that this should not increase the amount of fly tipping, Parish Councillors have their doubts.

Our Maidstone Councillor informed us that Maidstone Borough Council has now set up a specific team to reduce fly tipping across the Borough. This team will be dedicated to detection of fly tippers and has already started a crackdown on carriers' permits to convey waste. So far, they have seized and crushed several vehicles as a result and have been issuing fixed penalty notices to people who can be proved to have dumped rubbish.

A meeting is being arranged with the person heading up the new team to discuss what we can do in the Parish to make life as difficult as possible for those who want to fly tip in Stockbury. We will also discuss low level fly tipping ie people throwing their fast food wrappers, drinks cans etc from cars.

In the meantime, you can help. If you see anyone dumping rubbish, either in quantity or maybe just a coffee cup, please take a note of the vehicle registration number and report it (details in last month's Observer).

Maidstone Local Plan

Just when we thought it was safe, Maidstone Borough Council are starting to work on their next Local Plan. This is of vital importance to us all as it will outline where they want new housing to go in their pursuit of meeting Government building targets. The Parish Council will make sure that there is representation from Stockbury throughout the process in order to minimise the local effects.

Planning

The Parish Council gives a view on all applications made within Stockbury, doing our best to be objective and balanced in the feedback we give to Maidstone Borough Council. We remain disappointed with the way in which Maidstone officers and the MBC Planning Committee interpret planning law, particularly when considering retrospective planning applications. We will continue our efforts to bring some common sense to bear but we hold out little hope under the current regime at MBC.

Intimidation

Several of the smaller items discussed at the February meeting could have been resolved by discussion with the people involved. Unfortunately, Councillors and Parishioners felt intimidated from previous experiences with some residents and at least one of the problems highlighted will now have to be pursued formally. The Parish Council views intimidation seriously and will press for the Police to take a hard line on it whenever it occurs.

Phil Woods
Chairman
Stockbury Parish Council

AWARD WINNING M B Farms

Monday to Friday: 8:00 a.m. - 5:00 p.m.

Saturday: 9:00 a.m. - 5:00 p.m.

Sunday: 8:00 a.m. - 3:00 p.m.

Post Office Hours

Mon, Tue, Thurs, Fri: 9.00 a.m. - 5:00 p.m.

Wednesday: 9:00 a.m. - 4:00 p.m.

Saturday: 9:00 a.m. - 12 noon

National Lottery Now Available

Web: <http://www.mbfarms.co.uk>



The Harrow Pub
Internet Café

- Use your own phone, tablet, laptop anytime for fast broadband speeds
- Get tutored help using our laptops or your kit
- Sessions now running on 1st Tuesday and 4th Thursday of the month 2pm-4pm
- Other support and times can be considered.

For more information,
call Sara on 01795 842914



STOCKBURY COMMUNITY BUS

Mondays - Sittingbourne

Tuesdays - Maidstone

Thursdays - Hempstead Valley Shopping Centre (Savacentre)

Pickups from 9:30 a.m. close to where you live. Give us a try!

07551 454702

KB
Hairdressing

KAREN BRUNNING

Art Director/Manager

Tel: 07809 277666

Email: karenbrunning@gmail.com

TONI&GUY - A1 NVQ LEVEL 4 ASSESSOR

Over 25 years experience as a **TONI&GUY** franchisee

CUTTING & DRY STYLING

Ladies cut & blow dry £45

Mens cut & blow dry £35

Blow dry £25

SUPER SERVICES

Bridal hair £65

Luxury hair treatments £10

Hair extensions by consultation

Wig cutting Specialist by consultation

COLOUR SERVICES

Highlights full head £55

Highlights half head £45

Highlights T Section £35

Additional Toner £10

Tint virgin hair £45

Tint Regrowth £35/£40

Pieces and Gloss £50

Perm £55

Based in Stockbury/Home visits available



Patrik Says

I do travel quite a lot through my ward after darkness. – or not so darkness these days. Every time I revisit an area, I notice some new installations of those darn bright LED floodlights. There is little which upsets me more than floodlights. I know that they are ridiculously cheap to buy and not too expensive to run. But just because we can illuminate the AONB, does that mean that we must?

You may remember that last July I was ranting about activities by the “new kids on the block”. These I define as residents who moved into the North Downs within the past six years. I wonder if the majority of floodlights are being installed by those ex-townies who cannot cope with the unpolluted sky-view which we ought to enjoy in the AONB. – So far this is just my pet-theory. Please help me to find out the exact traits in human behaviour, which lead to the destruction of nighttime tranquillity.

Answers and opinions very much needed and appreciated.

As it stands, policy SD7 of the Kent Downs Management Plan advises that careful design and use of new technologies should be used. Such installations must comply with the Institution of Lighting Professionals Obtrusive Light Limitations for Exterior Lighting Installations for Environmental Zone E1: Lights must be pointed downwards with zero sky-glow being emitted. No light must shine into any windows. Luminarie intensity must not exceed 2500 candelas. This is the equivalent of approximately a 150W old-fashioned halogen spotlight. (the little ones).

<https://en.wikipedia.org/wiki/Candela>

Any lighting stronger than this will be a planning breach contrary to the National Planning Policy Framework paragraph 172 and policies SP7 and DM 34 of Maidstone’s Local Plan.

If you notice extreme exterior lights please report them via the Maidstone Portal:

<https://self.maidstone.gov.uk/service/report-a-planning-enforcement-breach>

Could you also please email me your report reference numbers. I note that Planning Enforcement Officers are not pursuing this issue with the needed vigour. In the coming months I will seek to raise the awareness for this issue amongst the planning department. I will also seek to introduce a stricter dark skies policy for Maidstone when we review the Local Plan in 2021.

Please let me have your thoughts on this issue. I am YOUR representative and, never mind how strongly I feel personally about an issue, I need to do my work according to YOUR wishes.

And finally: Brexit!

I know that the vast majority of the North Downs Ward voted for Brexit and naturally, being your representative, I will support this decision. As your Borough Councillor, I have no influence about the final outcome, I can however assure you that at local, county and regional level there are furious preparations underway and South Eastern authorities are co-ordinating their efforts as we speak.

As for my personal opinion: Do you remember the millennium-bug scare? I am sure that we’ll face a similar situation on the 29th. An amicable solution will be proposed at 22:55 hours and a group of politicians in Brussels will stand on a set of stairs smiling for a late night photo-shoot. Remember, Brexit time is 23:00 UK time, which will be midnight in Brussels.

If it really should happen on the 29th, please join me for a pint in the Harrow !

PATRIK GARTEN (Cons)
MBC Councillor for North Downs Ward

Email: patrikgarten@maidstone.gov.uk

Phone: 01622-807907

(for back-copies of my Newsletters see:
<https://www.stockbury.org.uk/observer>)

The Harrow Pétanque Open Evening



Looking forward to the end of winter?
The long, warm summer evenings?
Enjoy good company and gentle outdoor exercise?
Want to visit some of the Inns of Kent?

Then why not join The Harrow Pétanque Team!

We are having an Open Evening on

Tuesday 12th March

At

The Harrow, Stockbury

From 7pm

If you are interested at having a go at throwing a few boules on our piste and maybe joining our friendly team on a Wednesday evening, then come along!

No Experience Necessary

All Ages Welcome

For more information contact Tina Jacobs

07743 910185 / 01795 484453

email : crackers1969@hotmail.co.uk

or

Sam Pendry at The Harrow Pub

01795 843222



Stockbury Neighbourhood Watch

Oil Boiler Specialists

We are a Police registered Neighbourhood Watch Scheme. Neighbourhood Watch is a way for communities to help themselves stay safe. We are volunteers who work in partnership with the police to:

A big thank you to all my loyal customers. I have been doing a lot of training and re-reading my company for the new RHI launch and to this effect we can now offer you biomass boilers (log, pellet and woodchip) and thermal Solar panels.

- Distribute safety advice
- Help make sure that elderly and vulnerable residents are not targets to criminals
- Gather information to help police tackle local problems
- Alert residents when there is a particular crime problem in the area

All design and installs in-house this will allow you to gain the MCS payment from the government to cover the cost of installation.

I will still be the best oil technician I can be for you all and keep your oil boilers running at their best

Our aim is to help people protect themselves and their properties and to reduce the anxieties of becoming a victim of crime.

Give me a call or email

Please be vigilant and report suspicious characters or incidents to the police and also to your co-ordinator (details below).



Mark Viccars

Chestnut Plumbing



Registered Business

07894067151

01795 842291

chestnutplumbing@yahoo.co.uk

Co-ordinators will cascade any information from the police or neighbours to members.

CONTACT NUMBERS:

OFTEC & HETAS Registered and Certified

Emergency : 999
(crime in progress/life threatening)

Non-Emergency : 101

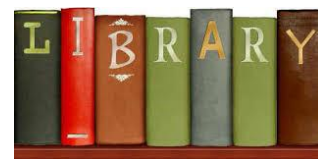
Rosemary (Ann) Ballard (*Co-ordinator*)
(01622) 736331

Alternatively you may e-mail the Co-ordinator at:

stockbury-neighbourhood@outlook.com

Any ideas and views would be greatly welcomed at the above mentioned e-mail address.

If you know of any other residents who would like to receive information from Stockbury Neighbourhood Watch, then please ask them to either contact the Co-ordinator on the above telephone number or e-mail their details to the above mentioned e-mail address.



Mobile Library Dates

14 and 28th March '19

At the Village Hall

the physiotherapy centre

(Established 20 years in Sittingbourne)

Stay Fit - Stay Active



Make every day
a 'day against'

Fully Qualified Male & Female
Chartered Physiotherapists
(MCSP & HCPC Registered)

The Coach House, 39b High Street Sittingbourne
ME10 4AW

We also have a Practice in Gillingham
if you would like more details contact us in Sittingbourne

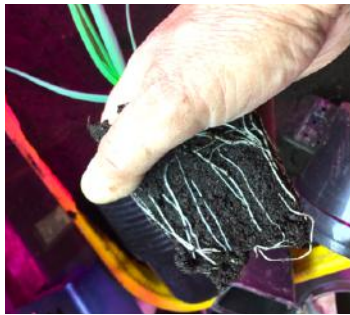
info@thephysiotherapycentre.co.uk 01795 435060
www.thephysiotherapycentre.co.uk



Stockbury Gardeners

Two years ago I could not even spell chrysanthemum; last week I took cuttings from the successful, “mother plants” that I grew last year. In order to grow them, you are best taking cuttings currently in order to have vigorous healthy plants. It is so simple to just nip off the top of the new growth made this year - about two and a half inches in old money, the book says use a sharp knife to cut an angle across the stem and place in sandy soil for a few weeks. None of that! I use my thumb nail and general-purpose compost. This should be carried out now. Later varieties can be propagated at the end of the month.

Some plants do not respond too well to potting on until the root ball is filling the pot. See the picture of an onion plant with healthy root formation, not quite ready for “upsizing” yet, to a bigger pot.



This month there is a whole list of things to sow and pot on, if you have any questions come and ask us on the 7th

Last week, my wife assisted me in putting up tit boxes in the garden. We managed to catch Wilko’s store when they were getting rid of old stock and so we purchased ten of the little homesteads; I was sure that the birds won’t care if they are not the most up to date abode. Well no sooner than we had screwed five of them up at various locations we observed several couples popping in and out of them, inspecting them as if they were viewing with “Purple Bricks”. Hopefully they will be fully occupied later.

You will, I am sure, be happy to know that my robin is still following me around the garden for the third year, and he is still feeding from the hand. Sometimes he will sit close by and sing even though he is not hungry, I keep telling him go away and find a mate!! It’s that time of year.

Stockbury Gardeners meet this month at 8pm on the 7th in the Village Hall. We have speaker Frank Turner presenting a talk on “The Story of Sealand”. He will be illustrating how a private individual declared an independent country in the English Channel complete with its own currency and passport, yes its true!! It talk is open to non-members as well, so come along, it’s a very compelling story.

Happy gardening.

Chris Spree



Stockbury W.I.

Happy Anniversary Stockbury WI

We are in our 93rd year now, which is amazing for such a small group. We celebrated the occasion with a lovely iced madeira cake made by Di and decorated with very delicate handmade sugar roses. Delicious (Thank you Di). Also enjoying our evening with us were Jane Backshall from Federation HQ and her friend Viv Creamer.

Our speaker for the evening was Fred Lemont, who gave us a very interesting insight into ‘The History of Greetings Cards’. We saw some beautiful and endearing examples of his vast collection, some of the rarer ones being of high value. Did you know that the very first Christmas card ever designed was in 1843 by Sir Henry Cole. He had 1,000 cards printed of which he gave 100 to his friends and associates then distributed the rest around the area. They were so popular, that it then started the massive annual production that we now have.

We are making plans to hold a fund raising ‘Pie Lunch’ on Saturday 18th May. If you would like to come and enjoy a two course lunch prepared and served by us please reserve your place early by ringing Pat Fothergill on 01622 734093. All are welcome. Adults £8 per head and children under 12 £5 each.

Our next meeting will be on Wednesday 13th of March in Stockbury Village Hall at 2pm. Our speaker will be Delia Taylor on ‘The Story of Ensa’. Please come and join us.

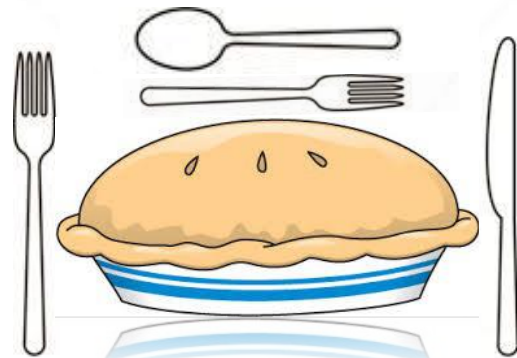
Heather Tomsett



Stockbury WI Pie Lunch

Saturday 18th May
Stockbury Village Hall
12.30 - 2.30pm

Adults £8 Children Under 12 yrs £5



Includes Desert & Tea or Coffee
Everyone Is Welcome To Join Us

For details and tickets please ring
Pat Fothergill on 01622 734093

THE HARROW AT STOCKBURY

We are now Serving a Full Menu

March Events

Friday 1st & 15th - Fish & Chip Night
Saturday 2nd - Steak Night
Tuesday 5th - Pie & a Pint Lunch
Saturday 9th & 23rd - Breakfast Club - 8.30 - 10.30am
Saturday 9th - Steak Night
Tuesday 12th - Pétanque Open Evening
Tuesday 19th - Quiz Night - £2 per person, teams of 6 max
Wednesday 20th - Seniors Lunch Club
Saturday 23rd - Curry Night
Tuesday 26th - Games Night
Saturday 30th - The Harrow Darts Tournament
(£10 entry, £200 First Prize)

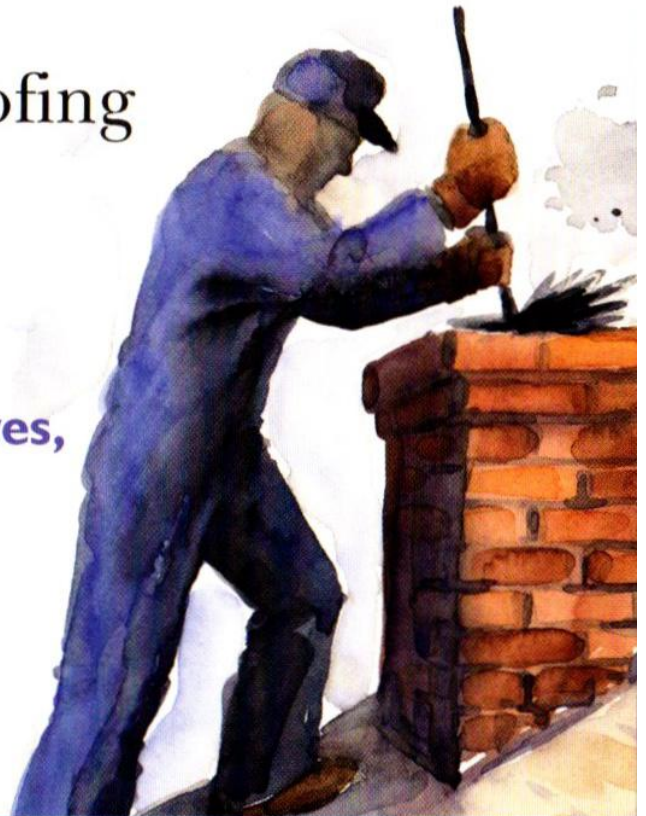
Opening Hours

Monday - Closed for now
Tuesday - Thursday 12.00-23.00
Friday & Saturday 12.00-12.00am
Sunday 11.30-21.00pm

Phone: 01795 843222

H & G Chimney & Roofing Services

**Chimney Sweeping,
Open Fire, Woodburning Stoves,
Inglenook.
Certificate Supplied
Roof Repairs
Gutters Cleaned**



CALL:-01622 739439 - 07860 318166



Stockbury Book Club

Last month we read 'Ten Days' by Gillian Slova.

The story is set in a heatwave in London. Following the death of a man at the hands of the police, riots develop. The book tells the story from different sides, the police, the locals, the politicians and their various power struggles, over a ten day period and a review a year on.

Several of us felt this book was slow to start or difficult to get into but all continued. This was a story with mixed subject matter, each having their own power struggle but interwoven with the story as a whole. The story was quite factual in its writing, some describing it like a newspaper report. We gave this an average score of 7.5.

Reviews online suggested this would make a good TV programme and most of us agreed.

This month we are currently reading, 'How To Stop Time' by Matt Haig.

Happy reading.

Bev Martin

PAMPER YOURSELF

It's so easy!

My guess is that we all like a slow start to the weekend – winding down from a busy week. AND whether you are working or retired, a bit of pampering comes in handy sometimes. It boosts the morale, brings on a smile or two.

Why am I going on about this? Well how many of you have considered and maybe discarded the idea of going out to breakfast... A bit decadent maybe... so what! Think again - do! A relaxed breakfast at The Harrow could be just the thing. Meet friends, catch up on the gossip, start the weekend with no hassle and it doesn't cost an arm and a leg (fortunately otherwise we'd never manage to go anywhere).

Having experienced it myself I would recommend taking an hour out of your morning to enjoy the 'full English' if you are so inclined or something less filling if that's what you prefer, with copious cups of tea or coffee to wash it down with. Bring the newspaper, bring your friends, sit back and relax.

Let's continue to make the pub a well-loved centre of the community. **The next Saturday breakfast is MARCH 9th 8.30a.m.-10.30a.m.**

See you there!

Ann Rich

(Ed - I concur!)

STOCKBURY COMMUNITY BUS

"CALLING ALL PASSENGERS!!"

Hello All

So here we are in the New Year and ready to go! Let us start as we did last year with a visit to a garden centre.

I've chosen Longacres Garden Centre – Bybrook Barn in Ashford, another family owned business with years of experience along with all the usual and 'The Gardener's Family Restaurant' with some outdoor seating and children's play area for the young at heart amongst you!

As its only about 40 minutes away, we could leave mid morning, say 10.30, take the scenic route as always, to arrive by 11.30 for a stay of about 4 hours or so to give you plenty of time for a good wander around to pick up all your garden needs and a spot of lunch if you fancy it.

So how about it? I was thinking Wednesday 24th April, just after Easter.

Free for concession holders and £5 per person without, payable as usual on the day. There maybe even be another quiz!

***So are you coming?
Call Fiona NOW!!
07551 454702***

Stockbury Arts & Crafts Fair Sunday 13th October 2019

Last year we had a very good response to our event. We featured a range of local artists including painters, crafters and photographers and provided refreshments and live music. Feedback was excellent from visitors and exhibitors alike, so we are planning to do it again.

The village hall is booked.

Please make a note in your diary so you don't miss the chance of a very enjoyable hour or so.

If you have artistic talents and would like to take part, please contact Penny Spearman on 07756 068739 or Ann Rich on 07718 070807.

Keep an eye out for further details!

Cockett's Corner Ditty

Trouble Sleeping

When having trouble getting to sleep
Try to count a flock of white sheep

But a black ram has climbed over the wall
And visited the ewes one and all

Across the field what lambs do you see?
Some black, some white and even khaki!!



Elliott Kitchens & Bathrooms

Our showroom based in the High Street, Sittingbourne has over 16 settings of bathroom and kitchens with a vast selection of doors from traditional and contemporary designs. We provide a full service package which not only includes the supply and installation of your new kitchen or bathroom but also all of the associated plumbing and tiling, plastering, electrical installation, small building work and decoration.

Our highly skilled fitters and engineers will see to every detail of your installation from start to finish with each job supervised, you can relax and watch your new room take shape to your custom design.

We are members of **Checkatrade** with an average rating of 9.82 out of 10 and also Kent County Council Trading Standards approved and British Institute of **KBB** installations member with all the relevant accreditation and insurances.

A family run business so our reputation is your guarantee.



Showroom 01795 522533

Workshop 01622 616117

Website: www.elliottinstall.o.uk

Email: info@elliottinstall.co.uk



TD ROOFING & DECORATING
THE COPPICE, STOCKBURY VALLEY
STOCKBURY ME9 7QN
01795 844801/07741 185775



Professional & Reliable Services

We are a family run company with 30 years in the roofing and decorating industry
Where quality is a must in materials and workmanship
Where all our customers come first from a small repair to a complete new roof

We cover all areas in and around Kent
We provide a free no obligation written quotation
For domestic and commercial customers

We Cover All Aspects of Roofing

New Roofs ❖ Strip/Re-Tile ❖ 3 Layer Felt Roofing ❖ Flat Roofs ❖ Lead Work Roofing Repairs ❖ Leak Tracing ❖ Steel Sheet Roofing
Poly-Carbonate Roofing ❖ Conservatory Roofs ❖ Storm Damage ❖ Moss Removal ❖ Chimney Repairs/Removal
UPVC Fascia, Sofitts, Cladding ❖ All Types of Guttering ❖ Repointing ❖ Lead Roofs ❖ Roof Reports ❖ Insurance Work

Decorating Services

All Types of Wood Shield Masonry Coating ❖ Masonry Coatings ❖ Wood Staining ❖ Gloss Coatings ❖ High Build Textured Coatings
Timber Fascia's, Sofitts Replaced/Repaired ❖ Timber Weather Boards/Cladding Replaced/Repaired

All work prepared and carried out to a high standard
Quality Brands and Materials used at all times

Fully Insured

Email: tdroofing@hotmail.co.uk
www.tdroofinganddecorating.co.uk

Have The Little Grey Cells Hibernated??

Come and find out at

The Harrow Fun Quiz

Tuesday 19th March

7.45pm for a prompt start at 8pm
£2 per head/6 to a team



Free Small Ads

The "Small Ads" section is for Stockbury Parish residents to sell redundant or unwanted items in good condition. If you have any such items, please send the details to the Editor at stockburyobserver@gmail.com and they will be advertised for free in The Observer for **one month only**.

We accept no responsibility for the quality of the items advertised for sale or the handling of payment between buyer and vendor.

FOR SALE



JONES Sewing machine

- ◆ With manual
- ◆ Zig zag and button hole attachment.
- ◆ Dust cover with carry handles included

£30.00 O.N.O

Contact Marion 01795 427711

Observer Deadline!

If you would like to advertise or have item included in next months Observer, we must receive it no later than

Monday 25th March, 2019

Please email your contributions to
stockburyobserver@gmail.com

Calling All Advertisers

Our annual rates for advertising are very reasonable and have remained unchanged for the 7th consecutive year :

£85 for a half page or £55 for a quarter page

Our advertising year starts in June and new adverts for less than 12 months duration will be charged on a pro-rata basis. Rates for ads smaller than a quarter page will be given on application.

If you would like to take out an ad, please email stockburyobserver@gmail.com The editor will confirm receipt and an invoice will be sent along with details of how to pay.

If you are a new customer, please also attach your ad, preferable in MS Word or Powerpoint. Please bear in mind when designing your ad that large solid blocks of colour may not look so good in the black and white paper edition of The Observer, despite looking good for our online edition.

This is a great opportunity to promote your business as The Observer is delivered to every household within the Parish of Stockbury as well as having an online presence.

**It's never too late to advertise in
The Stockbury Observer!**

Stockbury Parish Council Minutes

The minutes for our Parish Council meeting will be approved at the following meeting and will then be published on www.stockbury.org.uk within 5 days of the meeting at which they are approved.

FOR SALE

A well presented 3 Bedroom end of terrace family home in Northdown, Stockbury.

Situated on a corner plot with extensive rear gardens, and access to village playing field.

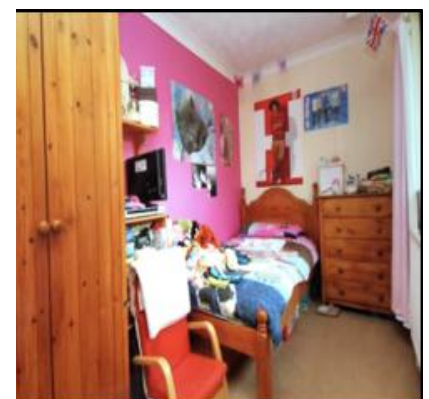
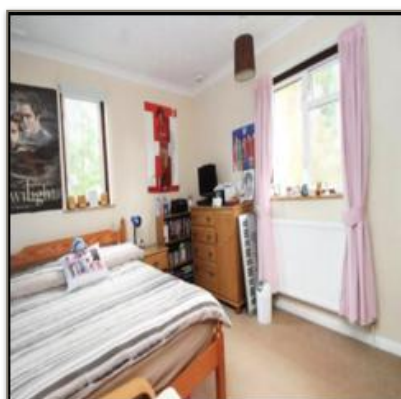
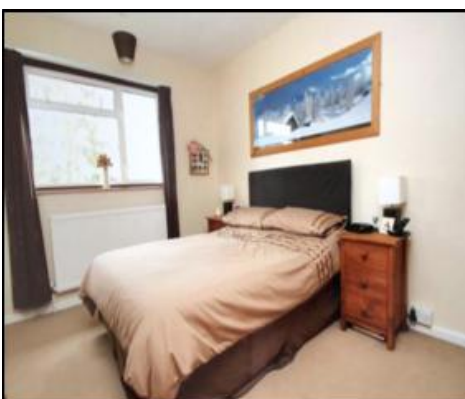
Features include:

Lounge/dining room, kitchen, utility room with ground floor WC, family bathroom.

Double glazing and oil fired central heating, open fire place.

Price £330,000

Call Gaz for further information or to arrange viewing 07973 363427



Useful Contact Information

Church Matters St. Mary Magdalene	Revd Liz Cox revlizcox@outlook.com	01795 435184
Community Bus	Booking Line	07551 454702
Cricket Club		
Crimestoppers	(Confidential)	0800 55511
Dancing Club	Brian Crisp	01634 231886
Dog Club	Mick Bingham	01795 842480
Electricity Problems		0800 7838866
Environment Agency	Incident Hotline	0800 807060
Fly Tipping & Waste Collection	Including bulky items	01622 602162
Gardeners	stockburygardeners@live.com	
Golf Society	Jeff Hall	01795 843296
Hall Bookings	Sue Porter	01795 843715
Kent County Councillor	Shellina Prendergast shellina.prendergast@kent.gov.uk	
Maidstone BC Councillor	Patrik Garten - patrikgarten@maidstone.gov.uk	01622 807907
MB Farms Stores & Post Office		01795 842401
Member of Parliament Faversham & Mid Kent Ward	Helen Whately - helen.whately.mp@parliament.uk	
Neighbourhood Watch	Ann Ballard	01622 736331
Not So Young Club	Rosemary Leonard	01634 232672
Parish Council	Sherrie Babington	01634 867173
Petanque Club	Tina Jacobs	07743 910185
Photographic Club	Tim Arnold - timarnold@btinternet.com	01795 843049
Police	Emergency Only Non-Emergency	999 101
Police Community Support Officers for Stockbury	Daniel Genn daniel.genn@kent.pnn.police.uk	101
Public Footpaths & Bridleway	Reporting issues with. - westprow@kent.gov.uk	03000 417171
Roads, Potholes, etc	(manned 24hrs) - www.kent.gov.uk/roads-and-travel/ report-a-problem	03000 418181
RSPCA		0300 1234999
Short Mat Bowls	John Lovell	01795 844319
South East Water	Emergency Only Non-Emergency	0333 000 0365 0333 000 3330
Stockbury Observer - Editor	stockburyobserver@gmail.com	
The Harrow Public House	stockburypub@gmail.com	01795 843222
WI	Pat Fothergill	01622 734093

TO BE RETURNED TO YOU
(after numbers have been allocated by the organisers)

STOCKBURY CHURCH MONTHLY DRAW APPLICATION FORM

Do you want this form showing your draw number(s) to be:

a) posted back to you or b) left at MB Farms Post office for you to collect (delete as appropriate)

NAME.....

ADDRESS.....

..... POST CODE.....

TEL NO: EMAIL:.....

NUMBER OF TICKETS REQUIRED..... NUMBERED (leave blank).....

PAYMENT ENCLOSED (£10 EACH)..... CASH / CHEQUE (Cheques to Stockbury Church PCC)

DATE..... SIGNED.....

Please return entry form & payment to either Angela Brown at MB Farms Post Office or Emma Charlesworth, 10 Hempstead Lane, Bapchild, Sittingbourne, Kent, ME9 9BH

TO BE RETURNED TO YOU
(after numbers have been allocated by the organisers)

STOCKBURY CHURCH MONTHLY DRAW APPLICATION FORM

Do you want this form showing your draw number(s) to be:

a) posted back to you or b) left at MB Farms Post office for you to collect (delete as appropriate)

NAME.....

ADDRESS.....

..... POST CODE.....

TEL NO: EMAIL:.....

NUMBER OF TICKETS REQUIRED..... NUMBERED (leave blank).....

PAYMENT ENCLOSED (£10 EACH)..... CASH / CHEQUE (Cheques to Stockbury Church PCC)

DATE..... SIGNED.....

Please return entry form & payment to either Angela Brown at MB Farms Post Office or Emma Charlesworth, 10 Hempstead Lane, Bapchild, Sittingbourne, Kent, ME9 9BH