

# MICKLEHAM PARISH Magazine

A community magazine for Mickleham and Westhumble



June 2017



# TRUGREEN®

## Professional LawnCare

### A lawn is never JUST a lawn

- Fertilisation • Weed and moss control
- Aeration • Scarification • Insect control
- Disease treatment • Hard surface weed control

Call now for a free LawnCare Analysis

**01306 644886**

TruGreen (Epsom)

Michael Beecheno

The Cottage, Pilgrims Way, Westhumble

Starting at just £20 per treatment

A Service **MASTER** BRAND



**The Safe Pair of hands**

**Tax • Accounts • Probate  
Inheritance Tax & Executorship**

For advice, please call us on: **01306 880880**

or email: [partners@bullimores.co.uk](mailto:partners@bullimores.co.uk)

[www.bullimores.co.uk](http://www.bullimores.co.uk)

Bullimores LLP licenced to carry on out the reserved legal activity of non-contentious probate in England & Wales by the ICAEW



**Stepping Stones**  
Country Pub and Dining

**STEAK NIGHT  
EVERY TUESDAY  
TWO COURSE MEAL  
GLASS OF WINE  
£19**

**Food Served All Day – Free Wi-Fi**  
Walkers – Muddy Boots – Cyclists – Families and dogs  
All welcome

*Lovely function room available for  
meetings, family and business events*

Near Box Hill and Westhumble Station  
**01306 889932** [www.steppingstonesdorking.com](http://www.steppingstonesdorking.com)  
[steppingstonespub@gmail.com](mailto:steppingstonespub@gmail.com)



**Please see  
website  
for  
special  
events**

# Sherlock Funeral Service

*Sherlock Funeral Service is an  
Independent family owned business,  
established over 100 years*

- Private Service Chapel & Rest Rooms
- Home visits arranged if required
- Pre-Paid Funeral Plans available
- Free Parking

**Telephone: 01306 882266**

Trellis House, 190 South Street, Dorking RH4 2ES.

Email: [office@sherlockandsons.co.uk](mailto:office@sherlockandsons.co.uk)



**Funeral Directors & Monumental Masons**

# MICKLEHAM PARISH Magazine

June  
2017

## Mickleham Parish Magazine

A community magazine for Mickleham and Westhumble, published under the auspices of Mickleham PCC, with an independent editorial panel.

The magazine is published at the beginning of each month, except January and August.

**COPY DEADLINE  
FOR THE  
JULY-AUGUST 2017  
MAGAZINE  
Sunday  
11<sup>th</sup> June**

send to:

Sue Tatham  
St Anthony, Pilgrim's Way  
Westhumble  
Dorking RH5 6AW  
01306 882547  
[sue@thetatham.co.uk](mailto:sue@thetatham.co.uk)

Contributions in any form are welcome, as are good quality photographs. There is no charge for advertising local charity and community events. However, the editors reserve the right to shorten, omit or reformat articles submitted for publication, depending on space.



Printed by Bishops Printers,  
Portsmouth

Mickleham Rectory

Dear friends

You may be aware that we are looking to reorder the chapel in Westhumble to make it more accessible to the wider community. This will involve installing a toilet, small kitchen and improvements to the organ, lighting and heating. We will also be removing some (not all) of the pews and putting in chairs. Plans are still at an early stage and we are working closely with Westhumble Residents Association to ensure their support and ongoing commitment. We are already spending a considerable amount of money on the outside of the chapel as there are a number of repairs that are urgently needed.

The main purpose of the chapel will continue to be a place of worship – or will it? Services are held twice a month at the moment (8 a.m. Holy Communion on the 4<sup>th</sup> Sunday and 11.30 a.m. Morning Prayer on the 2<sup>nd</sup> Sunday). Both services follow the Book of Common Prayer. The congregation is keen and enthusiastic but it is not large (we rejoice when we make double figures) and we tend to be 'of a more mature age'. There is no question at all at the moment of closing the chapel as a place of worship, but if we look ahead then the future is not too encouraging.

I often hear people saying how much they miss the Book of Common Prayer, but here is an opportunity to come to a service where this book is used on a regular basis. The Holy Communion Service is quiet and reflective (lasting about 30 minutes) but at the Morning Prayer Service (lasting about 45 minutes) we sing hymns and chant canticles. It would be wonderful if more people who enjoy the traditional services were able to join us in worship – and we are now offering a glass of sherry at the end of Morning Prayer!

People often say 'You do not have to go to church to be a Christian'. At one level that is true, but at a deeper level it shows a lack of understanding of the Christian faith. We go to church because we WANT to worship God in the presence of other believers. This month sees two very important events in the church calendar – Pentecost and Trinity Sunday. They are both very challenging and Christians tend to have differing views as to their significance. However, they are both key events in helping us to come to terms with the Christian faith.

After Trinity Sunday comes the long season now called 'Ordinary Time'. The liturgical colour is green and signifies the challenge we face to grow in our understanding of the Christian faith. We are now seeing evidence of growth all around us in our gardens: where is the evidence of our growth as Christians?

With best wishes

*Malcolm*

Malcolm, our Parish Priest, is more than happy to visit people in the parish (with or without church links) to discuss pastoral and/or spiritual matters. He is also happy to offer home communion to those not able to attend church on a regular basis. Just contact him.





## JOIN US FOR BREAKFAST

THE RUNNING HORSES  
9 – 10 A.M.

Please book by the Tuesday before

## MEN'S BREAKFASTS THIRD SATURDAYS 17<sup>th</sup> June

Book with: Andy Diamond  
diamo1@hotmail.co.uk

## WOMEN'S BREAKFASTS FOURTH SATURDAYS 24<sup>th</sup> JUNE

Book with: Stephanie Randall  
0773 6933 482  
srandall55@gmail.com

## Tea @3

FOURTH MONDAYS

Monday 26<sup>th</sup> June

Host: Alison Wood,  
Abbots Cottage, London Road  
Mickleham  
ALL WELCOME  
TRANSPORT AVAILABLE



## Fairtrade Stall

Sunday 4<sup>th</sup> June  
In St Michael's after  
10 o'clock service

Traidcraft offer an extensive  
range of very good quality craft  
items. Catalogues available or  
view online at

[www.traidcraftshop.co.uk](http://www.traidcraftshop.co.uk)  
Alison Wood 01372 376443  
Amanda Wadsworth 01306 743164

## A Big Thank-you to Sarah and Simon Ward

At the morning service in St Michael's on 23<sup>rd</sup> April presentations were made to the Wards to mark their retirement: Simon as churchwarden and Sarah as parish administrator. Both had held these posts since 2012. We are very grateful for all their hard

work on our behalf and for helping to keep all the services and other church activities running smoothly. Fortunately Simon is going to continue on the PCC and as Deanery Synod representative, and Sarah has agreed to continue as our website manager.

## Anne Weaver writes...

An enormous thank you to everyone who has been knitting or crocheting baby blankets for the SANDS charity. I sent a box of 16 blankets just before Easter which was a wonderful achievement. I included a note that said each blanket had been made with love. I know that several people are still making blankets and I plan to send another parcel at the beginning of September. If you haven't a pattern and would like to contribute a blanket, please contact me for a copy. Both patterns are very easy and can be done by anyone who can tell one end of a knitting needle or crochet hook from another. If you feel you would like to contribute but are unable to make a blanket yourself, you could buy the wool and ask a friend to make it on your behalf, that way even more people can be involved.



Advance notice – save the date  
**An evening of jazz with  
Jerry and the  
Jazzmen  
Saturday 30<sup>th</sup> September**

Harvest Supper at the Village Hall – includes a fish and chip supper & fruit salad and a pay bar. Tickets go on sale in August – to register your interest in advance please contact Simon Ward (simonward@btinternet.com)

**For the whole community**

## 2018 will be a busy year!



We are starting to plan for next year's Village Fête on Saturday 7<sup>th</sup> July. Usually the Fête and the Village Party alternate years, but for various reasons the party has been postponed to 2018. It will take place in the grounds of Juniper Hall two weeks after the Fête on Saturday 21<sup>st</sup> July. – see details below.

## New Mickleham & Westhumble Youth Group

See page 26 for further details



Please note: Non-church goers are very welcome to join the men's and women's breakfasts and Tea@3.

## 2017 ANNUAL PAROCHIAL CHURCH MEETING



This meeting took place on Sunday 23<sup>rd</sup> April and was chaired by Rev Graham Osborne. Twenty-nine parishioners attended.

At the Vestry meeting which preceded the APCM, Anne Weaver was re-elected as Churchwarden and John Banfield replaced Simon Ward. Thanks were given to Simon for all his work over the years.

At the APCM there were elections to the PCC. Val Selwood stood down and her place was taken by Colin Wylde;

Jamie Aarvold and Jenny Hudlass were also elected for three years. Frank Warren retired as Deanery Synod representative, presenting a report on Deanery Synod activities during the year, and Simon Ward and James Riches were elected in his place.

Reports were received on Safeguarding Children and Vulnerable Adults (Jenny Hudlass), Fabric, Goods and Ornaments (John Banfield), Worship Group and Outreach (Jenny Hudlass), Fair Trade Stall (Alison Wood and Amanda

Wadsworth), Almshouses (John Banfield), Craft Workshops (Meredith Shiers), Mickleham Parish Magazine (Sue Tatham) and St Michael's School (Jeremy Smith). All these reports were available at the meeting and are available from me if you would like to see any of them. Elizabeth Moughton  
PCC Secretary

## Changes to church personnel following the Annual Meeting

Churchwardens : John Banfield & Anne Weaver Parish Administrator: Alison Wood

PCC members: James Aarvold, Carole Brough Fuller, Mark Day, Jenny Hudlass, Elizabeth Moughton (Secretary), Richard Siberry (Treasurer), Amanda Wadsworth, Paul Wates, Colin Wylde

Deanery Synod representatives: Simon Ward and James Riches

*Ex officio* members of the PCC include: The Parish Priest, Churchwardens and Deanery Synod representatives

Church website manager: Sarah Ward

## Extracts from the Annual Financial Review

We are very fortunate as a parish in having a substantial Endowment Fund, the income from which is used towards the financing of both major and minor projects, such as stonework repairs (2015), expenditure on the graveyard extension (ongoing), and past and planned work on the Chapel of Ease in Westhumble. However, it has been a constant theme of my annual financial reviews that as a parish we should aim to cover our annual expenditure on the regular and ongoing costs of ministry, (such as the Parish Share payable to the Diocese, upkeep of church services, utilities bills, insurance, churchyard maintenance bills and outward giving) from our planned giving and plate collections, parochial fees for weddings

and funerals, fundraising and other church activities income. We are still falling short of that target, as the figures highlighted below will reveal. Indeed, it is a matter of concern that figures for planned giving, which we share with the Diocese, fall far short of the average figures for both Diocese, Deanery and Archdeaconry (see table). We are also vulnerable in that a high proportion of our income from planned giving comes from a very small number of donors. I suspect that many parishioners do not appreciate how much it costs to keep the church going as a place of worship (without taking account of major items of expenditure on maintenance and projects), and to pay our dues to the Diocese – more than £68,000 in 2016 i.e. over £1,000 per regular worshipper.

The total raised from our planned giving and plate collections, parochial fees for weddings and funerals, fundraising (particularly the Village Fete) and other church activities in 2016 was £67,889 (up from £64,864 in 2015). Total expenditure on regular and ongoing costs (including outward giving: £760 to Tearfund for the Uganda Water Project,

£760 to support the work of the Diocese of Cyprus and the Gulf, in particular in Iraq and other war-torn areas within that Diocese) was £68,842. So we had a deficit on 'general account' of £953.

Given the 6.5% increase in the Parish Share payable to the Diocese for 2017 (£37,511) and the few fundraising events planned for this year, we anticipate a deficit, on current account, of more than £6,000 for 2017 unless there is an increase in our regular giving.

I would encourage all who have not already signed up to the Parish Giving Scheme\* to do so as soon as possible, because it greatly assists with and simplifies the administration of regular giving, and improves our cash flow: instead of having to submit a tax repayment claim at or after the year end, we receive tax credit month by month. This applies to all those who give regularly via the yellow envelopes. These are not really intended for use by parishioners who give regularly.

Richard Siberry  
Treasurer

\* Please contact Richard for further information about the Parish Giving Scheme.

2016	Weekly Average	Annual Average
Guildford Diocese	£20	£1,040
Leatherhead Deanery	£21	£1,092
Dorking Archdeaconry	£25	£1,300
Mickleham	£14	£ 728



Superb professional  
cleaning of carpets,  
oriental rugs,  
upholstery, curtains  
and leather  
Guardsman  
anti-stain protection

- spot stain and odour removal
- leather cleaning specialists
- flame retarding
- dust mite reduction service
- all work fully insured & guaranteed

For a free, no obligation quotation, call today  
**Freephone 0808 144 9071**  
John Joannides, 28 Bracken Close, Bookham

**Safeclean**  
*The furnishing care specialists from GUARDSMAN*



*Pinehurst  
Rest Home*

*We aim to provide an excellent service at  
competitive rates, supporting emotional, physical  
and social needs of our clients, always respecting  
and protecting their status as adults.*

- Residential and 24-hour daycare
- Excellent cuisine
- Facilities for disabled: medic bath / lift
- Home doctor in attendance
- Single & sharing rooms
- Convalescent & short stays
- Lounge with TV & piano
- Separate dining room
- Physiotherapist, chiropodist & hairdresser
- Entertainment: theatre visits / parties  
& cabarets held on premises

**National Trust Road, Box Hill  
Mickleham, Dorking, Surrey RH5 6BY**  
Telephone: 01306 889942 / 888253

*Dorking Decorators*  
PROFESSIONAL PAINTERS & DECORATORS

**40 Years Experience**  
All aspects of painting and decorating

**01306 640418**

[www.dorkingdecorators.co.uk](http://www.dorkingdecorators.co.uk)

Approved by Trading Standards & Checkatrade



**CHRIS HULME**

*Garden Machinery*

Service and repair of all makes and models of:

- Ride-on mowers
- Rotary mowers
- Cylinder mowers
- Chainsaws
- Strimmers
- Hedge cutters
- Rotavators
- Blower vacs

Quality secondhand machinery  
Collection and delivery service

The Barn, Cowslip Lane, Mickleham 01372 377757 / 07950 961606



*Flowers  
by Elaine*

Established 1978



- ★ Bouquets ★ Arrangements ★ Hand-tied Wraps ★ Plants & Bulbs ★ Exotic Flowers
- ★ Pots & Baskets ★ Planted Displays ★ Champagne ★ Wines & Spirits ★ Fresh Fruits
- ★ Cute Teddies ★ China & Vases ★ Helium Balloons

01306 883511 fbe@btconnect.com 66 High Street, Dorking, Surrey RH4 1AY  
Order online at: [www.flowersbyelaine.co.uk](http://www.flowersbyelaine.co.uk)



**For all your decorating needs...**  
Professional, friendly and speedy service at all times

- |                          |                             |
|--------------------------|-----------------------------|
| Fully insured            | Insurance work              |
| Exterior painting        | Interior decorating         |
| Free quotes & advice     | Oil & Water-based products  |
| Commercial/Domestic work | Wallpaper hanging & removal |

0794 713 376 0208 3978 962  
[www.slhdecoratingservices.com](http://www.slhdecoratingservices.com)

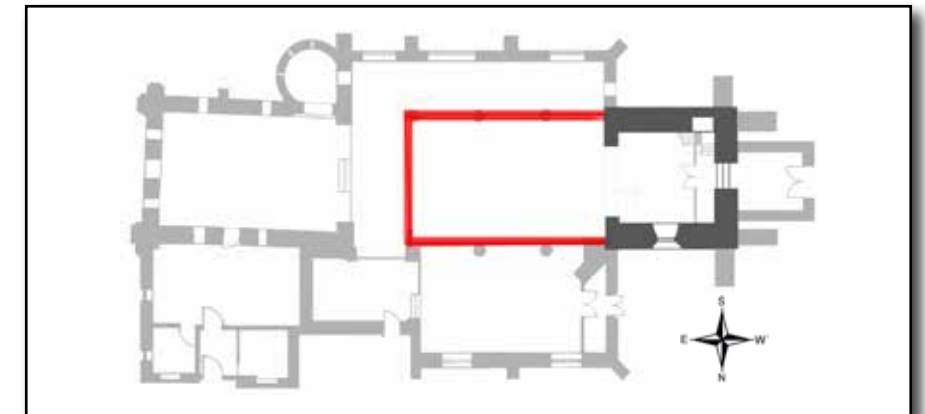
## Mickleham & Westhumble Local History Group Just how old is Mickleham Church?

*First of a series of occasional articles on the history of St Michael's Church by Sue Tatham*

Following his conquest of England in 1066, Duke William II of Normandy ordered a great survey of England and parts of Wales to find out what or how much each landholder had in land and livestock and what it was worth, so that they could be taxed accordingly. The information from this survey conducted between 1080 and 1086 was recorded in what is now called the Domesday Book (*domes* meaning 'house'). The entry for Mickleham reads thus: *Nigel holds of the Bishop Micleham. Anafrig held it of King Edward [the Confessor]. Then, and now, it is assessed for 5 hides. The land is for 4 ploughs and 4 bordars and two serfs. There is a Church and 2 acres of meadow. Wood worth 3 hogs.*

A 'hide' was the standard unit of assessment used for tax purposes. It was meant to represent the amount of land that could support a household, roughly 120 acres. (Therefore, Mickleham covered an area of around 600 acres)

The significant phrase for us is '**there is a church**'. Historians have described this as having a tower and a nave about half the length of the present one. It is highly likely that the nave was built of wood, no vestige of which survives. But parts of the original flint-built tower still exist. Evidence of this is a blocked-up window 'of Saxon construction' above the west door which can still be seen from the inside.



*Plan of the 1086 church according to early records, superimposed on the footprint of today's church*

Archibald Gordon Pollock (1850-1936) who lived at The Old House and was a churchwarden for many years, made a study of church and parish records. In his papers, held in the village archives, he reports that 'in the rebuilding of the church in 1823, on removing the old west casing by the tower, east side, the date 1018 was found marked in red on the old plaster coating. Antiquarians are doubtful if the marking was actually made at that date; it would imply that at that date the nave was being rebuilt.' There was a major Viking invasion at the end of the 10<sup>th</sup> century and the nave may have been damaged then.

So when could the first church have been built? Although Christianity came to Britain during the Roman occupation,

paganism dominated during the ensuing years of conflict – the Dark Ages. However, by the 7<sup>th</sup> century a strong alliance between Christianity and Kingship had been established and continued despite subsequent Viking invasions which often targeted monasteries and churches. Remarkably there were no invasions during the reign of Edgar (959-975) – later known as 'Edgar the Peaceful'. One of Edgar's first actions as king was to recall Dunstan, former Abbot of Glastonbury, from exile. Dunstan (later the Archbishop of Canterbury) was Edgar's advisor throughout his reign. This was the time when many village churches were built. Therefore, it is possible that the first church in Mickleham was built as early as 970 AD.

And finally, a clue as to why the early Christians built the church where they did. In 2009 when excavations for the vestry extension uncovered human bones, work had to be stopped for an archaeological survey. This confirmed that the bodies had been buried in the late 18<sup>th</sup> / early 19<sup>th</sup> century. But more significantly for us is that among the bones were pieces of Roman pottery, including box flue tile remains, and ceramic, dating from AD250 – 400. The archaeologist concluded that 'the presence of box flue tiles suggests a heated building, raising the possibility of a villa or bath-house at or close to the site. Given the early (Saxon) origins of the church, it is possible that it was built on a previous high-status Roman site'.

Sue Tatham



*Blocked-up Saxon window on inside west wall of church tower.  
The white stone is rock chalk, probably from the mine in Westhumble (now the bat caves)*



# Mickleham & Westhumble Local History Group

## Plus ça change, plus c'est la même chose II

Second in a series of articles by Angela Ireland looking at old parish magazines in the village archives

In my reading of the old Parish Magazines I was surprised to learn also of certain other issues, affecting the infrastructure of the village which continue to cause controversy today and are still unresolved. In 1922 there was a proposal to introduce street lighting, strongly supported by the Rector but equally hotly opposed by another reader. In 1932 the residents of Byttom Hill were reported as being unwilling to pay for repairs to the road. (Interesting to note that in fact in 1938 Mr Praed helped with the cost of the repairs from his own pocket.)

In the churchyard the problem that sometimes headstones were erected without gaining approval was noted as far back as 1929. As someone who has lived opposite or next to the churchyard for some years I was intrigued to read of the problem of trees dying in the

churchyard for no apparent reason as far back as 1931. I have observed this problem for the last 18 years and it has not gone away! I was also intrigued to see that bulb planting in the churchyard was carried out in 1924 and again in 1931. This has also been carried out twice in the time that I have been here. As someone who attended the consecration of our latest 'new churchyard' last summer it was interesting to read of the consecration of the 'new churchyard' in 1924, following the previous 'new churchyard' in 1886.

Of particular interest to those who were involved in the construction of the new children's playground last summer were the entries relating to the offer by the Mackworth Praed family to lease the land for a Children's Recreation Ground in 1925. This offer was accepted and

the land leased for a few years before being bought by an anonymous donor for the village. (This anonymous donor later turned out to be the excellent Miss Flora Valentina MacAndrew of Juniper Hall.) Generations of us have enjoyed this facility with our children and grandchildren. Interestingly the problem of dangerous traffic through the village is mentioned on several occasions during the 20s and 30s particularly in relation to the safety of local children. Hard to imagine that the volume of traffic was sufficiently great at that time but of course the by-pass had not been built and children had no alternative but to walk and nowhere else to play.

The Village Hall was already a well-used facility and it is intriguing to note that as far back as 1926 they were prevented for a time from staging productions there as a result of new fire regulations. 'Health and Safety' is not entirely new! In the spring and summer of 1968 the church organ was renovated provoking the comment that 'the organ was in pieces and lying around the church' – a scene that will be familiar to anyone who attended the church a few years ago! The church gates were evidently repainted in 1965 and opinion then, as now, was divided as to the aesthetic attributes of the red and gold.

Beyond the confines of our village it was interesting to see that concerns about globalisation were already being expressed by 1936. It was noted that trade from the Far East was already causing the 'spindles of the North' to lie idle in the mills of Britain.

To be continued...

Angela Ireland



From the village archives: a 1936 postcard of the churchyard east of the church showing the 1924 extension in the foreground.



## National Gardens Scheme Open Garden at Ashleigh Grange

Off Chapel Lane, Westhumble

Evening opening Friday 16<sup>th</sup> June with wine

6 - 8 p.m. Admission £6

Sunday 18<sup>th</sup> & Wednesday 21<sup>st</sup> June 2 - 5.30 p.m. with homemade teas. Admission £4

Plants for sale – Dogs allowed on leads



## Friends of Juniper Hall Leatherhead Youth Project



As the scheduled speaker for the May lunchtime meeting of the Friends of Juniper Hall was ill, Simon Ward arranged for us to hear about the experiences of a group of 11-year-olds who came to the Centre for a residential weekend during half-term last October. Their visit had been funded by the Field Studies Council Kids Fund. For some of the twelve youngsters this was their first time away from home on their own and surprisingly their first experience of exploring the countryside, considering they came from Leatherhead. Their leaders, Oli Bell and Mikey Dicken, youth workers with the Leatherhead Youth Project, told us about the impact of this 'awesome' visit on its participants, developing new skills as diverse as making their own bed and building dens in the woods of Box Hill as well as making them much more confident. (Many of the group had been identified as finding their transition from junior to senior school particularly difficult.)

Oli and Mikey told us all about the various activities of the Leatherhead Youth Project (LYP), a charity launched in 2005 by three Leatherhead churches to provide much needed services for socially and economically disadvantaged young people in Leatherhead North. It now provides long-term support for youths aged 7-19 throughout Mole Valley and in addition to their original base in the disused All Saints Church, Leatherhead, a centre has opened in Bookham. LYP offers innovative youth services aimed at helping young people to be safe, happy and to make positive changes in their lives.

### EXAMPLES OF LYP PROJECTS AND ACTIVITIES:

• **BFREE YOUTH CAFÉ:** LYP's relational hub, open every day after school for local young people aged 11-17. It provides a safe, positive space for young people to meet friends, enjoy activities & games, and get to know the youth workers. It allows the team to build positive relationships with local young people, and by doing so they can understand their needs and support them in other areas of their lives.

• **ONE-TO-ONE:** Counselling or mentoring young people referred by Surrey's Youth Support Service. This aims to provide early intervention before a young person requires specialist support.

• **TOTAL FOOTBALL:** A Friday night community football league held at Therfield School for local young people aged 11-16. Young people enter teams of six players and compete in six-week leagues. Launched in response to growing levels of anti-social behaviour among young people who had 'nothing to do' on Friday evenings. Run by former project participants who set up the equipment and referee the games. In return, they are helped to complete football coaching and refereeing courses with Surrey FA.

• **MAKING GOOD:** Offers the chance to give back to their community by taking part in social action volunteering activities during the half term, e.g. conservation work, litter picks, painting or clearing community areas.

• **GIRLS GROUP:** A regular session for young women ages 14-17 with issues affecting them in a fun and interactive way. Sessions, planned by the girls, include topics such as self-esteem, sexual health and internet safety.

• **SCHOOLS WORK:** With local primary and secondary schools in the local area. At Therfield School it offers one-to-one sessions with youth workers based in the school twice a week. Helps young people struggling with issues such as family breakdown, self-harm, depression and bullying. At Trinity School it provides Early Intervention Mentoring, with one-to-one support for vulnerable pupils, helping them with issues such as behaviour, school work, well-being etc. Also at Trinity it runs an annual transition scheme to help prepare Year-6 pupils for their transition to secondary education.

• **ASPIRE:** Aims to raise confidence and aspirations and help young people fulfill their potential. Works with young people aged 15-20 who are NEET or unsure about their future, by

helping them to create CVs, finding and applying for apprenticeships and employment, and supporting them to gain qualifications to boost their CV.

• **DUKE OF EDINBURGH SCHEME:** Some of local young people are unable to do DofE with their schools due to the high cost of equipment and residential trips. Since 2012 LYP, with support from Leatherhead Community Association, has been hugely successful at helping young people achieve this fantastic award. To date twenty-five have completed their Bronze and another seven Silver.

• **ROMANCE ACADEMY:** Launched at Therfield in 2016, Romance Academy, designed by YouthScape, is a ten-week course which helps young people learn and talk about relationships, sex, consent, choice and more.

• **FREESTYLE CAMP:** An annual youth camp which provides more than 40 local young people with an action packed time away from home during the Easter holidays.

• **FAITH WORK:** LYP is a Christian-faith based organisation, and as such as we run a number of activities and projects which support the growth of the Christian faith.

• **ALLSAINTS:** Opened in 2014, Allsaints is a speciality coffee shop run from our own building. It is staffed by three young apprentices, who will work with us for one year, earning money and achieving their apprenticeship in customer service.

• **PARK LIFE:** summer activities programme run each year during the holidays. It includes sports activities on the local recreation grounds in Leatherhead and weekly trips to the beach and other attractions.

At a time when the media is full of stories about teenage anti-social behaviour and mental illness, it is indeed refreshing and inspiring to hear about a project, very close to home, that is addressing these issues with considerable success.

Sue Tatham

[www.leatherheadyouthproject.com](http://www.leatherheadyouthproject.com)



## ASHTREAD PARK LANE FINE ARTS

RESTORATIONS - PICTURE CLEANERS - FRAMERS

ART GALLERY

Many originals and prints for sale

Open 9.30 am to 5 pm Monday to Saturday  
or call for appointment

102 The Street, Ashted KT21 2AW  
01372 277284 or 07940 677932  
lorna@parklaneartfinearts.co.uk

## EDE BROS

REMOVALS · STORAGE · SHIPPING ·

- Since 1926, Capel-based and family owned
- STRESS-FREE, local, national & worldwide
- Contact us for your **FREE** estimate...

**01306 711293**  
**edebros.co.uk**



**We provide the best  
possible care for your feet**

**Book your appointment:  
01372 454583**



**Bookham  
Chiropody & Podiatry Clinic**  
Diagnosis, Expert Treatment & Professional Care  
for Your Feet

**29 High Street, Great Bookham KT23 4AA**  
**www.bookhamchiropody-podiatry.co.uk**

## Betchworth Electrical Contractors Ltd.

Tel: 01737 843079  
Mob: 07966 239644

- Additional Lights and Sockets
- Complete Rewiring
- Garden Lighting and Power
- Electrical Installation Condition Reports
- Specialists in Fault Finding
- Telephone & Computer Cabling
- Central Heating Controls
- Smoke Alarms to BS5839:Pt6



All work is in compliance with  
BS7671:2008 Amendment 3



Gill and Paula would like to warmly welcome you to Aspen Care, offering assistance to enable you to live in the comfort of your own home with care and companionship.

- A happy alternative to a care home
- Cover while your family or carer takes a holiday
- Recuperation and rehabilitation following a hospital stay
- All aspects of personal care, medication and meal prep
- Dementia care, disability, chronic & critical conditions, end of life care
- Accompaniment to appointments

Call for a chat to discuss your requirements.

We look forward to hearing from you.

01737 354821 info@aspenliveincare.co.uk www.aspenliveincare.co.uk

## ALFA CHIMNEY SWEEPS

- Clean prompt work
- 30 years' experience
- Specialist advice for old/problem chimneys
- Weekday and weekend service
- Fully insured

**01306 883455**



## YOUR LOCAL FARM SHOP ON DENBIES WINE ESTATE

**farm shop deli plant centre**  
**FREE PARKING** **www.vgfarmshop.com** **01306 880720**

Open 7 days 9.30 a.m. to 5.30 p.m.

- Fresh fruit & veg – local & home grown
- Great range of local cheese
- Fresh bread, cakes, croissants & pastries
- Cook ready meals; Bangers Galore sausages

**LOCAL \* NATURAL \* ETHICAL**

**NOW IN!**  
Dorking asparagus  
Sussex tomatoes  
Bedding plants & perennials  
We stock local gin!

## Mickleham and Westhumble Horticultural Society Plant sale, coffee morning and AGM

This year we held our spring meeting at Ashleigh Grange (as has become our custom) on the morning of Saturday, 22<sup>nd</sup> April. Rather chilly but at least it was dry which is important for people who are going to sit outside for the business part of the occasion. Over the years we have now suffered or enjoyed almost every type of weather from being almost blown away to the heat of an early April sun.

An excellent display of plants for sale all grown and donated by members, met visitors on arrival, and a buying spree ensued during which the vast majority of plants quickly disappeared. As usual, these are superb value when compared to nursery prices, and our very grateful thanks are due to all those who contributed plants from their gardens. Meanwhile coffee, tea and cake were being eaten while chit was chatted and Angela's tulips in particular admired.

The Chairman reported another successful year for the Society. Two shows had been held, in July and September, and entries had been of a very high standard. The trip to Arundel had attracted a full coach and enjoyed in spite of the disappointing weather. In addition, we ran a plant stall at the Village Fete and piloted a fun multiple choice quiz which proved popular and altogether we raised £200 for the chosen charities. During the year we welcomed Pauline Davis on to the committee and together with Susie Gowenlock she has launched a new venture, The Garden Shed. Details of all their activities and the Society's events can be found on the website.

The Treasurer presented the accounts and reported a small loss. This year we had bought a gazebo and various supplies needed for shows and it was expected that 2017 would show a credit balance. The committee had made the

decision not to award money prizes to children who enter adult classes but they will still be eligible for points and cups. Young People's Classes will continue to give prize money.

All current officers were re-elected although the Chair had announced her intention to resign when a replacement could be found and expressed her gratitude to the committee for taking on some additional responsibilities. Many of the committee have given long service and would be happy to hand the baton on.

The draw for the RHS Show at Hampton Court was made, the winners this year being Helen and David Pollard. Our thanks go to Angela and Clive for their hospitality and to all those who contributed to the morning's enjoyment.

Schedules for the Summer Show will be delivered very shortly and we look forward to lots of entries in July.

Judy Kinloch

## Mickleham and Westhumble Horticultural Society Summer Show

**Saturday 15<sup>th</sup> July at 2.30 p.m.**

Mickleham Village Hall, Dell Close

An amazing display of locally grown flowers, fruit & veg  
and very impressive produce

Owls – Norbury Blue cheeses – Local honey

Delicious teas - Plant stalls *contributions of plants very welcome*

Plenty of children's classes both through St Michael's and the Nursery but also individual entries welcomed

Garden Judging for the Summer Show

This year the Paynter Cup will be awarded to the winner of the class for **A vegetable garden full of promise** and the Aitken Cup to the winner of the class for **A garden area grown for your own enjoyment**.

Garden judging will take place on Monday 19<sup>th</sup> June.

The judges are very friendly and enjoy looking round our gardens, large or small. Perfection is not expected!

**Entries by 8 p.m. on Friday 16<sup>th</sup> June** to Judith Long 07904 160961 or judith.long2@btinternet.com

Schedules will be delivered shortly and will also be on our website at <http://www.surreycommunityinfo/mwhs/>



Photography class titles:  
'First Light', 'Shot in the Dark', 'Animal Magic', and 'Nature's Sculpture'  
*Keep your eyes open for original subjects.*



## Do you remember the great storm October 1987?

This autumn we are planning to put on an exhibition commemorating 30 years since the great storm. Throughout the year we are looking to gather as much information as we can, including photos, memories, videos etc.

If you have any information you are willing to share, please email Sophie Parker [sophie.parker@nationaltrust.org.uk](mailto:sophie.parker@nationaltrust.org.uk)



# Mickleham Parish Council Annual Report 2016

The past year has been a relatively busy one for your Parish Council, as a number of new issues have arisen that required attention in addition to some hardy perennials.

Hardy perennials included the continuing issue of parking in the Old London Road, where the introduction of some new yellow lines has provided a degree of relief, especially in the congested area around the bus stop outside *The Running Horses*. Cyclists too continue to tax the patience of some within our community, especially those cyclists who seem to have a total disregard for other road users. Various conversations have taken place between the Parish Council, MVDC and cycling organisations in an attempt to reach agreement on the need for mutual respect and regard to sensible speeds. In particular, attention has been given to the area around the Burford Bridge roundabout and the available underpass. No satisfactory solution has yet been reached.

On a positive note, the new Children's Playground was opened on Friday 7<sup>th</sup> October with dozens of children rushing to enjoy the splendid new facilities. Our

thanks go to Heather Bourne and Sarah Parfitt and to those who assisted them in securing the funding and seeing the work satisfactorily completed. The new lease between the Recreation Ground and the Playground Association has been satisfactorily concluded but the land registration is still awaiting a conclusion. The footpath across the Recreation Ground was re-surfaced and has been widely appreciated. The Parish Council also put the 'I' back into the 'Mickleham' sign on the Dorking approach to the village.

The Village Shop was discussed at some length, with the Shop's Directors keeping the Parish Council well informed of its efforts to find a satisfactory purchaser of the business. An offer has now been made but it is dependent on a house sale which as yet has not been concluded. The poor broadband reception in the community has been the subject of an enormous amount of communication with Open Reach, the body responsible for implementing the government's policy to ensure everyone has reasonable broadband speeds. Mary Flint and her team have worked tirelessly to move things forward and at

present are close to signing a contract with Open Reach, enabling all residents to get faster broadband speeds.

The future of the 465 bus route was also an issue which involved considerable communication and public lobbying to both SCC. and TFL. Finally, common sense prevailed and the future of the bus route is secured for at least the next five years.

There have been a number of planning applications which have been considered by the Parish Council, giving rise to the talk on housing need which will follow the annual meeting. This will help in setting the criteria for future applications.

Finally the Parish Council is reviewing our Community Resilience Plan to ensure that we are equipped to cope with the initial aftermath of a local disaster such as flooding or a road accident on the A24. A number of volunteers have offered their support and expertise should the need arise.

As always we are enormously grateful for the support the community gives and its appreciation of the Parish Council's work.

David Ireland  
Chairman

## Further MPC News



### Viscount Bennett Canada Day

In common with other communities around the world who enjoy proud connections with Canada, Mickleham has been invited to submit items for the Canada 150 Time Capsule which will not be opened until 3017.

At their meeting on 10<sup>th</sup> May, Mickleham Parish Council gave its enthusiastic support to the idea of a commemorative day and are seeking ideas from residents both as to what could be staged on the day itself and what should be included in the time capsule.

Viscount Bennett, whose ancestors on his father's side were English, is credited with shaping Canada into the country it is today. He had the misfortune of taking on the role of Prime Minister during the Great Depression but was far-sighted, founding the Bank of Canada, the Canadian Radio Broadcasting Commission as well as laying the ground

for the national air transport system. He was also very generous to those citizens experiencing hardship and later estimated that between 1927-37 he had personally donated more than 2.3 million Canadian dollars.

Three years after his defeat in the 1935 election, 'R B' retired to Mickleham, a move influenced by the friendship he had established with Ontario-born Lord Beaverbrook, the press baron, who was living at Cherkley Court nearby. Bennett was the first and only former Canadian Prime Minister to be elevated to the peerage as Viscount Bennett of Mickleham and of Calgary and Hopewell in Canada. He died of a heart attack in the bath at his home at Juniper Hill in Mickleham in 1947.

In the late 1990s his former home city, Quebec asked that Viscount Bennett's remains be repatriated to Canada, but although nothing >>>>

... Further MPC News continues

>>> had been specified in his will, there was a powerful lobby in this country, led by Lady Aitken, Lord Beaverbrook's daughter-in-law, declaring that it was his wish to

be buried in Mickleham and they won the day. Suggestions for what could take place on 1<sup>st</sup> July and what appropriate items could be put in the time capsule should be emailed to

Mickleham Parish Councillor Andrew 'Mac' McNaughton, who was born in Canada, at [mac@rymack.com](mailto:mac@rymack.com) or to the Parish Council Clerk at [trevor.haylett9@gmail.com](mailto:trevor.haylett9@gmail.com).

## Housing Needs Survey for Mickleham

At the Parish Council Meeting that followed the Annual Parish Meeting held in the Village Hall on 10<sup>th</sup> May, the Rev David Ireland was unanimously elected Chairman for the 2017-18 year and Jane Brown unanimously elected to serve as Vice-Chairman.

After the meeting, we heard an interesting talk from Louise Williams of Surrey Community Action on ways to tackle housing need in the village. Several options were put before Parish Councillors and members of the public,

including a Neighbourhood Plan and a Village Design Statement. Whichever route was favoured, a Housing Needs Survey was the starting point and Louise explained how she could help with the organisation and funding.

Such a survey would draw out the 'hidden figures' of need, including those people who might otherwise have fallen under the radar such as adults still living at home with their parents because of a lack of funds or those living in a three-bedroom council house who need to downsize. We



were left with much food for thought. The discussion will next be taken up at the 19<sup>th</sup> July meeting of the Parish Council.

Trevor Haylett  
Parish Clerk



## Summer exhibition at Dorking Museum Time Gentlemen Please! The story of Dorking pubs

Our new summer exhibition is already a 'must-see' event. It plots the growth in the number of pubs from the earliest records in the 13th century to its peak in the 19th century and subsequent decline, revealing many of the town's 'lost inns'.

In 1892, there were 46 licensed premises in Dorking – approximately one hostelry for every 240 residents! One of the earliest in the immediate area was the Fox and Hounds, founded in 1254. The present building dates from the 17<sup>th</sup> century, was later known as the Hare and Hounds and is now the Burford Bridge Hotel.

Among the many 'lost inns' in the town itself were the Cardinal's Hat and the George, both in what is now the High Street some time before 1485. Evidence of the George is still carefully preserved in the building that now houses The Lemon Tree gift shop. The Cardinal's Hat reverted to a private residence and was rebuilt in the late 17<sup>th</sup> century as The Red Lion, perhaps the most important inn in Dorking at that time. In the 1590s, The Queen's Arms became the largest, stretching from the

corner of North Street as far as Mullins House in West Street with stables, yards, outbuildings and a bowling alley. The town's hotels and inns came to provide a variety of other services to the local community – a theatre, sports and games venues (including cock-fighting!), offices for civic duties and for a range of trades people (even a dentist). The exhibition shows their significance and the roles they played in the lives of residents and travellers. Maps plot their locations, many with old photographs, paintings and drawings of

how they looked in their heyday, while modern photographs show how they, or the buildings that have replaced them, look now.

Families are welcome at the exhibition – there is a pub sign drawing competition for children and a chance to try your hand at some old pub games. Other pub memorabilia are on display and a new 120-page book about Dorking pubs is available at the Museum.

The Museum is at 62 West Street, Dorking RH4 1BS. Open Thursday, Friday and Saturday 10 am - 4 pm.



The Burford Bridge circa 1860

Photograph: Dorking Museum





**Counselling  
Reiki / Reiki Courses  
Mind & Body Healing  
Shamanic Journeying  
Munay-Ki Rites**

*'Wow, it's amazing! I feel so much calmer within myself and also emotionally too, which is really good. I feel so different.'*

For further details please call Judith Cobby on  
01306 882229 / 07790 614448  
or visit [www.healing-inspiration.co.uk](http://www.healing-inspiration.co.uk)



**NJB DOMESTIC CLEANERS**

*come home to a clean home*  
Mother and son business  
Fully insured

Weekly or fortnightly cleans  
One-off spring cleans  
End of tenancy cleans  
Shops, offices and communal areas

[ncbdomes@aol.co.uk](mailto:ncbdomes@aol.co.uk)

Please ring Nick: 07717 763 380  
or Chris: 07780 670491

**Ballroom Dancing  
Latin American Dancing  
Professional Training [IDTA]**

Private Lessons only  
Sunday, Monday & Wednesday  
Evenings 6 - 10 p.m.

At Mickleham Village Hall  
Dell Close, Mickleham, Surrey RH5 6EE  
07901 742 887  
[vmvdancing@gmail.com](mailto:vmvdancing@gmail.com)



IDTA Qualified Teacher

**STEVE & TIM LANGLEY**

*Experienced craftsmen*

ANTIQUE RESTORATION  
CABINET MAKING  
FRENCH POLISHING

Free estimates, collection & delivery  
01372 457700  
07960 486455 07847 769517

**Rowlatt Garden Services**

**RGS**

EST.1985

**Gardens large and small  
we maintain them all**

All aspects of private and commercial garden  
and estate maintenance, landscaping undertaken  
Fencing, grass & hedge cutting

Telephone: 01737 844373 Mobile: 07887 838666  
References available upon request

**Road and Competition Engineering Ltd**

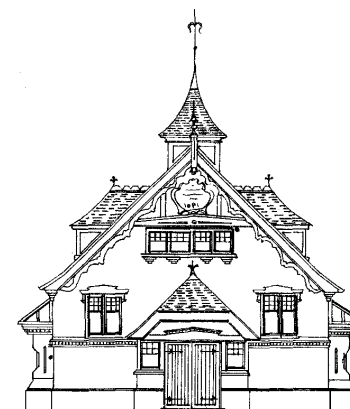


Specialists in the  
maintenance and  
restoration of  
historic road and  
race cars

From general servicing, performance  
modifications, engine/gearbox rebuilds  
to full restorations. We also offer vehicle  
storage. Our workshop is based in Charlwood



Jamie Mason 07840 698452 [www.racelttd.com](http://www.racelttd.com)



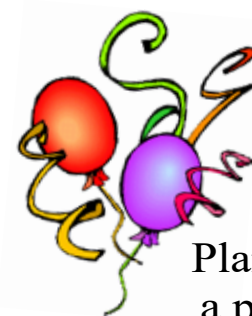
**Mickleham  
Village Hall  
available  
for hire**

Hall bookings  
Table & chair hire

Deanna Darnell  
01372 388474  
07790 941 601

[d\\_darnell\\_MVH@hotmail.co.uk](mailto:d_darnell_MVH@hotmail.co.uk)

[www.surreycommunity.info/  
micklehamvillagehall](http://www.surreycommunity.info/micklehamvillagehall)



Planning  
a party?

Equipment  
available for hire

China ~ Cutlery  
Electric urn

Equipment hire  
Mary Banfield  
01372 373912  
[mgbbmw@aol.com](mailto:mgbbmw@aol.com)

**Community Directory**

Box Hill (National Trust)  
Head Ranger – Mark Dawson 01306 885502  
[mark.dawson@nationaltrust.org.uk](mailto:mark.dawson@nationaltrust.org.uk)  
Friends of Box Hill – Chair Mrs Lyn Richards 01737 842889  
[lyn@mra.uk.net](mailto:lyn@mra.uk.net)

Box Hill School  
Headmaster – Cory Lowde 01372 374814  
[hmsec@boxhillschool.com](mailto:hmsec@boxhillschool.com)

DORKING CRICKET CLUB  
Chairman – David Spackman 07831 859232  
[david@theimagecompany.co.uk](mailto:david@theimagecompany.co.uk)

DORKING GROUP OF ARTISTS  
Exhibition Secretary – Patricia Booth 01737 24491  
[patriciabooth100@gmail.com](mailto:patriciabooth100@gmail.com)

DORKING LAWN TENNIS & SQUASH CLUB  
Jim Cattermole 01306 883629  
[jim.cattermole@uwclub.net](mailto:jim.cattermole@uwclub.net)

DORKING RUGBY CLUB  
Jim Evans 07789176417  
[jim@flintcottage.net](mailto:jim@flintcottage.net)

THE GARDEN SHED  
Pauline Davis 07759 646 353  
[paulinemdavis@gmail.com](mailto:paulinemdavis@gmail.com)  
Susie Gowenlock 07768 923 088  
[susiegowenlock@gmail.com](mailto:susiegowenlock@gmail.com)

JUNIPER HALL FIELD CENTRE 01306 734501  
[enquiries.jh@field-studies-council.org](mailto:enquiries.jh@field-studies-council.org)  
Head of Centre – Simon Ward [Simon.lr@field-studies-council.org](mailto:Simon.lr@field-studies-council.org)  
Friends of Juniper Hall – Mrs Suzy Hughes 01372 275393  
[suzyhughes@businessetiquetteint.com](mailto:suzyhughes@businessetiquetteint.com)

MICKLEHAM CHILDREN'S PLAYGROUND ASSOCIATION  
Secretary – Mrs Sarah Parfitt 07767 891772  
[sarah@sarahparfitt.com](mailto:sarah@sarahparfitt.com)

MICKLEHAM CHORAL SOCIETY  
THURSDAYS 8 - 10 P.M. – MICKLEHAM VILLAGE HALL  
Conductor – Miss Juliet Hornby 01372 373106  
Secretary – Mrs Anne Weaver 01306 883932  
[www.micklehamchoral.org.uk](http://www.micklehamchoral.org.uk) [weaver\\_anne@hotmail.com](mailto:weaver_anne@hotmail.com)

MICKLEHAM OLD BOX HILLIANS FOOTBALL CLUB  
Secretary – John Atewell 01372 374745

MICKLEHAM PARISH COUNCIL  
SEE WEBSITE FOR MEETING DATES [www.micklehampc.org.uk](http://www.micklehampc.org.uk)  
Chairman – Rev'd David Ireland 01372 379381  
[rev.ireland43@btinternet.com](mailto:rev.ireland43@btinternet.com)  
Parish Clerk – Trevor Haylett [trevor.haylett9@gmail.com](mailto:trevor.haylett9@gmail.com)

MICKLEHAM PARISH MAGAZINE  
Editor – Mrs Sue Tatham 01306 882547  
[sue@thetathams.co.uk](mailto:sue@thetathams.co.uk)  
Deputy Editor – Charlotte Daruwalla 01306 884025  
[chardaruwalla@tiscali.co.uk](mailto:chardaruwalla@tiscali.co.uk)

MICKLEHAM VILLAGE HALL  
Chairman – Ben Tatham 01306 882547  
[ben@thetathams.co.uk](mailto:ben@thetathams.co.uk)  
Bookings Manager – Mrs Deanna Darnell 01372 388474  
07790 941601  
[d\\_darnell\\_MVH@hotmail.co.uk](mailto:d_darnell_MVH@hotmail.co.uk)

*Continued on page 16.*

**In Pain? We Can Help  
Dorking Chiropractic Clinic**

Dr Graham M Allen & Associates

- Back Pain and Sciatica
- Hip, Knee, Foot and Ankle Pain
- Neck Shoulder and Arm Pain
- Headaches and Migraine
- Sports/Occupational injuries
- RSI/Carpal Tunnel
- Back Pain in Pregnancy
- Arthritic Pain
- Trapped Nerves
- Joint Problems

01306 887793  
316 High Street Dorking RH4 1QX  
[www.dorkingchiropractic.co.uk](http://www.dorkingchiropractic.co.uk)

HSA

Registered by the General Chiropractic Council • Member of the British Chiropractic Association

**DORI VANA PLUMBING  
YOUR LOCAL PLUMBER**

EXPERIENCED, RELIABLE  
AND PROFESSIONAL  
From changing washers to changing bathrooms

CALL DORI  
07977 220465 / 01306 887282

Proud members of  
**Checkatrade.com**  
Where reputation matters



## ST MICHAEL'S CHURCH

*within the United Benefice  
of Leatherhead and Mickleham*

Incumbent – The Rev'd Graham Osborne  
01372 372313

### PARISH PRIEST

The Rev'd Malcolm Raby 01372 378335  
07810 088594  
rm.raby007@btinternet.com

### CHURCHWARDENS

John Banfield 01372 373912  
banfieldjohn@aol.com

Mrs Anne Weaver 01306 883932  
weaver\_anne@hotmail.com

### PARISH ADMINISTRATOR

Mrs Alison Wood 01372 376443  
admin@micklehamchurch.org.uk

### PCC SECRETARY

Mrs Elizabeth Moughton 01306 883040  
eliz.moughton@btinternet.com

### TREASURER

Richard Siberry 01372 375303  
Siberrman@aol.com

### ORGANIST & CHOIR MASTER

Christopher Connett 01306 743061  
c.connett@btinternet.com

### BAPTISMS CO-ORDINATOR

Mrs Vickie Leney 01306 884054  
vleney100@gmail.com

### WEDDINGS CO-ORDINATOR

Mrs Jane Denny 01306 883107  
carsondenny@aol.com

### FUNERALS ORGANISER

Brian Wilcox 01372 374730  
dbrianwilcox@sky.com

### WEBSITE MANAGER

Mrs Sarah Ward 01372 383350  
sarwar\_63@hotmail.com

**www.micklehamchurch.org.uk**

*For information about services for other  
denominations see website pages.*

*Search on 'Churches Together Mole Valley'*

## PARISH REGISTERS

### SERVICE OF THANKSGIVING

2<sup>nd</sup> May Merna Kean de Béchevel

## FOOD BANK

Donations for the food bank may be left  
at the back of the church

# Calendar of Events

## June

### 4 Pentecost Sunday

8 a.m.

Holy Communion (Order 2)

10 a.m.

Worship Together and Baptism

11 a.m.

Fairtrade Stall

4.30 p.m.

Pilgrimage, Prayer and Food Festival at Guildford Cathedral

### 8 Thursday

11 a.m.

Bible Study Group

3.30 p.m.

Wedding: James Evans & Tracy Collyer

### 11 Trinity Sunday

8 a.m.

Holy Communion (Order 2)

10 a.m.

Holy Communion

11.30 a.m.

Morning Prayer – CHAPEL

### Copy deadline for the July/August Magazine

### 12 Monday

9.15 a.m.

St Michael's School assembly in church

### 15 Thursday

11 a.m.

Bible Study Group

### 16 Friday

6 - 8 p.m.

Open Garden at Ashleigh Grange

### 17 Saturday

9 a.m.

Men's Breakfast at The Running Horses

7.30 p.m.

Mickleham Choral's concert to Celebrate

Juliet's 10 years. St Martin's Church, Dorking

### 18 1<sup>st</sup> Sunday after Trinity

8 a.m.

Holy Communion (Order 2)

10 a.m.

Holy Communion

2 - 5.30 p.m.

Open Garden at Ashleigh Grange

### 19 Monday

### 21 Wednesday

2 - 5.30 p.m.

Open Garden at Ashleigh Grange

### 22 Thursday

11 a.m.

Bible Study Group

8 p.m.

AGM Children's Playground Association. The Running Horses

### 23 Friday

7.15 p.m.

Youth Group meets. Mickleham Village Hall

### 24 Saturday

9 a.m.

Women's Breakfast at The Running Horses

2 - 4 p.m.

Garden Shed Mickleham Garden visits

### 25 2<sup>nd</sup> Sunday after Trinity

8 a.m.

Holy Communion (Order 2) CHAPEL

10 a.m.

Holy Communion

### 26 Monday

3 p.m.

Tea@3 at Alison Wood's

### 29 Thursday

11 a.m.

Bible Study Group

## DATES FOR YOUR DIARY

Saturday 15<sup>th</sup> July – M&WHS Flower Show

Saturday 9<sup>th</sup> September - Heritage Open Days guided tour of St Michael's Church

Saturday 30<sup>th</sup> September – Jazzy Harvest Supper

## MEMBERS OF THE PAROCHIAL CHURCH COUNCIL

James Aarvold John Banfield Carole Brough Fuller

Mark Day Jenny Hudlass Elizabeth Moughton

James Riches Richard Siberry

Amanda Wadsworth Simon Ward

Paul Wates Anne Weaver Colin Wylde

## TOOLS WITH A MISSION (TWAM)

www.twam.co.uk

TWAM is a Christian charity committed to the recycling and refurbishment of tools which then can provide a means for poorer people in developing countries to learn a trade and be able to support themselves and their families. With this practical help, thousands of young men and women have benefited from the skills they have learned. They need:

- garden forks & spades, saws, hammers, drills pickaxes etc
- sewing or knitting related tools, thread, zips, scissors
- embroidery items, fabric and sewing machines
- wool and knitting needles, patterns
- portable typewriters, printers and laptops

If you have any of the above which could be used to help someone to have a better quality of life and hope for the future, please contact Carole Brough Fuller: 01737 842918 cbroughfuller@btinternet.com

## HELPING HANDS

INCLUDING FOOD FOR FRIENDS

*A service for all residents of Mickleham and Westhumble*

Examples of services we offer:

- Transport for visits to doctor's surgery or hospital
- Essential shopping / collection of prescriptions
- Changing library books
- Small tasks: eg changing fuses, altering clocks etc
- Dog walking / care of pets
- Visiting / befriending
- Home-cooked meals for local families going through difficult times

Requests to Mary Banfield 01372 373912  
or leave a message on answerphone.  
Callers will be contacted within 24 hours

*More helpers needed – please contact  
Mary if you can spare some time.*



# Community Directory

Continued from page 13

MICKLEHAM & WESTHUMBLE BOOK CLUB  
Mrs Bernice Bailey 01306 741310  
bpbailey\_uk@yahoo.co.uk

MICKLEHAM & WESTHUMBLE CRICKET CLUB  
Team Secretary – Will Dennis 01372 372684  
will@micklehamhallfarm.co.uk

MICKLEHAM & WESTHUMBLE HORTICULTURAL SOCIETY  
Chairman – Mrs Judy Kinloch 01372 375358  
www.surreycommunity.info/mwhs mail@jkinloch.plus.com

MICKLEHAM AND WESTHUMBLE LOCAL HISTORY GROUP  
Chairman – Ben Tatham 01306 882547  
ben@thetathams.co.uk

MOLE VALLEY DISTRICT COUNCIL  
Councillor – Duncan Irvine 01306 885001  
07738 384287  
duncan.irvine@molevalley.gov.uk

NADFAS SOCIETIES  
Betchworth – Miss Mary Venning 01306 883301  
Dorking – Mrs Sue Tatham 01306 882547

ST MICHAEL'S CHURCH OF ENGLAND (A) INFANT SCHOOL  
Headteacher – Jeremy Smith 01372 373717  
info@stmichaels-dorking.surrey.sch.uk  
Friends of St Michael's School – Mrs Meredith Shiers  
meredithshiers@gmail.com

ST MICHAEL'S COMMUNITY NURSERY  
WEEKDAY MORNINGS – MICKLEHAM VILLAGE HALL  
Supervisor – Mrs Hilary Budd 01372 361021

SURREY COUNTY COUNCIL 03456 009 009  
Councillor – Mrs Hazel Watson 01306 880120  
hva.watson@btinternet.com

SURREY WILDLIFE TRUST 01483 795440  
info@surreywt.org.uk

WESTHUMBLE RESIDENTS ASSOCIATION  
Chairman – Holly McLaren 07887 660129  
holly\_mclaren@hotmail.com

WESTHUMBLE NEIGHBOURHOOD WATCH  
Lead Co-ordinator – David Allbeury 07860 227451  
westhumble.neighbourhood.watch@gmail.com

## ADDITIONAL CONTACT INFORMATION

CITIZENS ADVICE  
Dorking – Lyons Court 0844 4111 444  
Leatherhead – Swan Mews, High Street 0844 4111 444

POWER CUT HELPLINE 0800 783 8866

CRIMESTOPPERS 0800 555 111

POLICE  
Non-emergency number 101  
Dorking Police (non-urgent) 01483 630370

Neighbourhood Specialist Team – Dorking Rural North  
Inspector Richard Hamlin 01483 631474  
Richard.Hamlin@surrey.pnn.police.uk

PC 40541 Lee Munday leemunday@surrey.pnn.police.uk  
PCSO David Sadler Sadler8761@surrey.pnn.police.uk

## Babysitting by local teenagers

Chris Rowland 01372 376712  
Freya Pearce 01306 884724  
Olivia Parkin 07887 367850  
Maisy Presley 07720 657327  
Isabella Pererira 07515 489067  
Issy Nash 01306 742762  
Ailsa McNaughton\* 01306 887408  
Patrick Moran 01306 640043  
Ellie Kim 07773 395575  
Ailsa Graham 01306 889855  
Anna Forti 07557 964530  
Alexa Dewar 01306 884744  
Emily Brewer 01306 883793  
Philomena Ala 01306 885767  
Delphine Ala 01306 885767

\* In holiday time only

*If you would like to add your  
name to this list, please get in  
touch with the Editor.  
No charge.*

## Advertising in the Parish Magazine

Please contact the Editor.  
Small ads: a nominal fee is  
charged for ads where items or  
services are bought or sold.

We have been advised to print  
the following reminder:  
*We cannot guarantee the  
quality of the goods and  
services offered by our  
advertisers.*



## The Village Hall Mickleham Chairman's Report 2016

I took over as Chairman on a temporary basis at the AGM in May 2016 but I regret to report that we have not made any progress in finding a more permanent replacement. We are not the only local organisation finding it difficult to attract someone to take on such a role.

We are all most grateful to Mary Banfield for being our Chairman from 2009 to 2016 and for agreeing to continue to deal with invoicing and liaising with Deanna Darnell about bookings.

The Village Hall has had another successful year thanks to the work of my fellow Trustees and to Deanna Darnell our Bookings Manager. I am most grateful to all my fellow Trustees who have taken on the responsibility for dealing with specific aspects of running the Hall. Their roles are listed in the Chairman's Report for 2015.

Our Treasurer, Brian Wilcox, reports that we generated a surplus of about £4,000 in 2016 and that this was better than 2015 because there were fewer

items of major maintenance during the year. We are in a healthy financial position but we need to hold funds ready for replacement of equipment and for items of major maintenance.

Our bookings have held up during the year. At the end of 2016 we recruited Anne-Marie O'Brien to improve our marketing and to help maintain the number of bookings in the future. We improved the facilities available to hirers of the Hall by installing a fixed digital projector to go with our existing screen. We were pleased to agree with the Community Nursery that they could use part of the woodland at the back of the Hall as a Forest School Area. This has been a great success.

We have created a simple summary drawing of the parcels of land owned by the Hall together with the Land Registry Property Title numbers and have marked on the ground the key boundary marker posts. This will provide clarity about the land which we own for our successors as Trustees. Ben Tatham

Please come to hear Mickleham Choral Society



Juliet's 10 Years – details on page 19

GOOD THINGS COME TO THOSE WHO WAIT

The Mickleham Village Party  
will take place NEXT YEAR - 2018  
So please save the date:  
Saturday, July 21st, 2018, 7.30pm  
in the grounds of Juniper Hall



## Community News

Farewell to Helen Betts who has moved from Burney Road to Brockham.

Welcome to:  
• Karen and Paul Beck who have moved from Teddington to Burney Road.

• Nikki Sansom and Jonathan Spring, who have moved to Swanworth Lane.

• Ann Freckleton and John Tacon have moved to Burney Road from Auckland, NZ with their dog Mr Lumlei.

A very belated welcome to Rod and Elana Mathias who moved into Swanworth Lane some time ago, with their daughter Eirwen who is a pupil at Box Hill School.

Our sympathy to the family and friends of:

• Merna Kean de Béchevel, recently of Pinehurst Rest Home, who died on 24<sup>th</sup> March, aged 86. A Service of Thanksgiving for her life was held in St Michael's Church on 2<sup>nd</sup> May.

• Douglas Smithers, long-time resident of London Road, Westhumble who died on 29<sup>th</sup> April, aged 95. Dougie served as Housing Officer for both Dorking Urban and Mole Valley District Councils.



We are always grateful to receive news items from our readers.

## Roger Maynard 1937 – 2017

We are very sorry to report the death of long-time Burney Road resident, Roger Maynard on 28<sup>th</sup> April following a long illness. We send our love and deepest sympathy to his wife, Margaret. We will include Roger's obituary in next month's magazine.





The second meeting of 'The Garden Shed' was very successful. The Westhumble Chapel of Ease was full again and we enjoyed our first sharing event, resulting in lots of happy

## The Garden Shed

gardeners taking home their newly-acquired plants. Jennifer Louis gave us an interesting demonstration of her newspaper pot maker and then Geoff Hawkins gave a very informative and entertaining talk on growing vegetables. We hope everyone has been inspired to produce lots of healthy and tasty vegetables to eat. Consequently, we look forward to a record numbers

of entries in this year's Horticultural Society's Summer Show in Mickleham Village Hall on Saturday 15<sup>th</sup> July. Do have a go – it really is fun.

Next month we will be leaving the 'classroom' and getting outside to visit some of the gardens in Mickleham. This is not about 'show' gardens, but about sharing our experiences and picking up tips and ideas. Pauline Davis



## Mickleham Garden Visits Saturday 24<sup>th</sup> June 2 – 4.30 pm

Visit private gardens in Mickleham  
Refreshments – Plant Sale

Admission £2 tickets available from Pauline or Susie

Pauline Davis 07759 646353 / paulinemdavis@gmail.com – Susie Gowenlock 07768 923088 / susiegowenlock@gmail.com

## National Trust Leith Hill Place



The 'Wedgwood at Home' exhibition of antique Wedgwood china has now opened and is generating a great deal of interest. The collection displays the amazing variety of ceramics made by the company over the years, and contains some unusual items such as an 18<sup>th</sup> century oval painting box and a fascinating replica of the Slave Emancipation medallion seal, made in 1962 after the 1787 original.

The Wedgwood collection was first shown to the public when Sir Ralph Wedgwood lived at Leith Hill Place in the 1950s and '60s. We are very fortunate that the present Lady Wedgwood has lent us a large part of the original collection in memory of her husband, Sir Martin Wedgwood, grandson of Sir Ralph, and we have the opportunity to see it again in the very same room where it was originally displayed. The exhibition continues until the end of

October and entry is free to members and included in the entrance price for non-members.

Other events being held in Leith Hill Place in June include the Coldharbour Village Band performing on Sunday 4<sup>th</sup> June; a Wellbeing Day on Monday 12<sup>th</sup> June; and Fathers' Day on Sunday 18<sup>th</sup> June when children can bring their dads for free.

From 20<sup>th</sup> June until the end of August, Artist in Residence, Louise Scillitoe-Brown, will create a rolling programme of experiential spaces in the Drawing Room and run associated workshops. Louise makes structures from reclaimed building materials that hold pockets of physical colour and projected zones of reflected coloured light. ([www.louisesb.com](http://www.louisesb.com))

More details for these and other events can be found on the Leith Hill Place website: [www.nationaltrust.org.uk/leith-hill-place](http://www.nationaltrust.org.uk/leith-hill-place)



## Will Writing Service

If you are over 50 and live in the Mole Valley area, you can use Age Concern Mole Valley's Will Writing Service.

Once a month local solicitors, Hart Scales & Hodges are taking appointments for Will Writing at the Age Concern Mole Valley offices in Dorking. (A suggested donation of £50 can be given to Age Concern Mole Valley for the service. A solicitor would normally charge more than £200).

To book an appointment for the Will Writing Clinic, please call 01306 899104/ 07442 017169 or by email: [info@ageconcernmolevalley.org.uk](mailto:info@ageconcernmolevalley.org.uk)



**MCS**

# CELEBRATE

10 years with conductor  
**JULIET HORNBY**

Mickleham Choral Society will sing the Fauré Requiem accompanied by full orchestra. The rest of the programme will comprise solos, ensembles and some of Juliet and the Choir's favourite pieces.

Saturday 17th June 7.30 St Martin's Church, Dorking.  
Tickets £15.00, children under 14 - £7.50  
Box Office [weaver\\_anne@hotmail.com](mailto:weaver_anne@hotmail.com) or 01306 883932

Bar serving Prosecco and soft drinks.



## Can technology help to support people living with dementia?

Helping people with dementia stay independent for longer and have a better quality of life is the key aim of a major, new NHS smart technology study that is seeking 1400 recruits.

The study is led by Surrey and Borders Partnership NHS Foundation Trust, with the support Alzheimer's Society, University of Surrey and Royal Holloway University of London, and is the first in the UK to look at how smart technology could play a major role in supporting people with dementia who live at home.

Seven hundred people with dementia are needed for the study and 700 carers. People keen to register their interest to take part need to live in Surrey or North East Hampshire. They must have a diagnosis of mild to moderate dementia and be able and willing to give their consent to take part in the trial.

To find out more about the study go to: [www.sabb.nhs.uk/tihm](http://www.sabb.nhs.uk/tihm) People who would like to talk to someone about the study can call Surrey and Borders Partnership's research team on: 01932 722247.



## 2017 AGM Thursday 22<sup>nd</sup> June

The new playground was designed to be an interesting, challenging and safe environment for children to be able to play freely and imaginatively in. Play-time in Mickleham marks the beginning and end of each school day with children grabbing a few precious moments in the playground on the morning school run, and after school when the St Michael's children empty out of the classrooms and meet their siblings at the playground. During the day we have seen younger pre-school children enjoying the equipment with their parents and carers, without the bigger children rushing around. The playground has also seen an increase in use at the weekends with families coming to Mickleham so their children can meet up, let off steam and play together. Spring has signalled the start of the playground's busiest months and it is fantastic to see the playground being used by so many.

The Playground Committee is holding its AGM at **The Running Horses on Thursday 22<sup>nd</sup> June at 8 p.m.** The playground is there for both the children living in our community, those attending the nursery and school, and children visiting friends and family in the village. Anyone is welcome to attend and share thoughts and ideas regarding this very important local facility. The Playground is run by a charity that is made up of a very small group of parents who would really appreciate your support. Please do join us at the AGM. Sarah Parfitt

See page 9  
for the  
Summer Show's  
photography  
class titles





# NEED A CARER?

Highly experienced, qualified carer available

Hours to suit your needs

Cheryl 07810 881 267



Extensions and alterations often require a  
**Structural Engineer**

**Robert Wynter & Partners Ltd**

**01306 879875**

Book House, Vincent Lane  
Dorking RH4 3HW

**Get IT Fixed, Get IT Connected**  
Expert Repair & Maintenance



Brockham based. No call out charges. Fully transparent quotations with no hidden costs. We make technology work for you.

Call us now on  
**01737 845980**

ChalkHill Systems  
www.chalkhillsystems.co.uk

# Painting

Decorating, tiling,  
Curtain & blind hanging,  
Wallpapering,  
Furniture assembly etc.

- Fully insured
- Free estimates
- References available

Tel: Martin 07770 441 201



**Vivien Cresswell**  
Made-to-measure Soft Furnishings

Curtains, Roman Blinds, Cushions



Extensive range  
of fabrics

**01737 843858**

www.cresswellscurtains.co.uk

**Mike Palmer**

**Electrical Services**

Part P registered electrician



From additional lighting and sockets  
to complete rewires

Fully insured Registered with the NICEIC

07866 930483 [mike@mikepalmer.biz](mailto:mike@mikepalmer.biz)

Boxhill Way, Strood Green, Betchworth RH3 7HY

# KING WILLIAM IV



Our VIP locals card is going well, but there are still many in our community who haven't picked up their cards yet. This card is for those who live in Westhumble and Mickleham (and others areas close to the pub) and gives a discount off food on any day/time (our 'locals' rate)

Please check out our beer festival on 9<sup>th</sup> - 10<sup>th</sup> June. Tony and Kat are organising this and can answer any questions, but I believe they are arranging live music, BBQs and a host of new ales to sample. I am staying out of this one, delegation is not one of my strongest qualities, so sitting on my hands and letting others take control of an event is proving to be a test of my personal development. When the urge to spring in to action and take over occurs, some sagely words from Anne and deep breathing exercises usually is sufficient for the moment to pass. Busy days ahead with BBQs / live jazz / Fathers' day / Pimms, strawberries and cream / sunny days and summer. See you soon. Eamonn Anne and team

PS If anyone knows of a spare room to rent for two months in the summer for Anne's nephew, give her a call 07778 547 867

Bytton Hill, Mickleham 01372 372590 [www.thekingwilliamiv.com](http://www.thekingwilliamiv.com)

# Westhumble Residents Association

As Angela Ireland described in last month's magazine finding volunteers for village activities is never easy and so it was that I found myself in the Westhumble Chapel with the 21st century version of 'the same names that occur over and over again' and thank goodness for every one of them!

But I am a new name: new Chair of the Westhumble Residents Association so let me introduce myself. I am a 'career girl' who started out as a nurse, spent a decade or more in the Prison Service and now work as an international health consultant. I have lived in Westhumble just three and a half years (I moved from Epsom). A keen DIY person I have converted the Infant School, updated and restored 'Catbells' and am now replanting what was the Cleveland Lodge orchard. I must also put on the table that I am a cyclist and beekeeper.

At the last Residents Association Meeting we had a number of discussions including, what is the purpose and role of the association? I think a reasonable summary is that we endeavour to preserve and improve the quality of life for those in the village.

So what does this look like today?

• **Making Westhumble Safe**  
e.g. Neighbourhood Watch information, a proactive relationship with local police and targeted initiatives around thefts,

break-ins etc., installation of the De-fib at the station.

• **Managing environmental nuisance**  
e.g. litter, noise, *inconsiderate* cyclists, high impact building schemes

• **Traffic Management** e.g. the railway bridge, buses, cyclists, ramblers, runners and bikers

• **Nurturing our community**  
e.g. social events, mail lists, support networks, exploiting the few common areas, welcoming newcomers and other ice-breakers.

So what is on the current urgent/important pile?

In addition to ongoing activity in all areas, our biggest project is the Chapel. There is an opportunity to turn this into a multi-use community facility in addition to its role as a place of worship. Money needs to be raised for fitting out, furniture and equipment. Before we ask for money we need to have an idea about how it could be used by locals and those from further afield. No point getting a grant for table tennis tables and yoga mats if we are into beetle drives and Zumba. Ben Tatham is leading a working party and he would welcome your thoughts.

Social events – we are at the changing of the guard on this, families who have done it for decades are just not in a position to keep doing the heavy lifting.



Holly McLaren

Now, I know that it is difficult to commit on your own, but if we could find groups or teams to take a small part each that would spread the work, break the ice and be fun on the day. We currently need teams to volunteer for bonfire building and refreshment supply in October/November. More details from me or Neil Mason.

Or maybe you think there is an opportunity for different social activities – maybe you have experience of other villages and what worked there. We would love to hear.

What would I love Westhumble Residents to do?

• Join the email list if you are not on it (we don't share your address)

• Invite me to meetings of Westhumble residents – whether it's tea, history, road or hobby related.

• Think where your set could contribute.  
Holly McLaren

07871 051661 / 01372 458616  
[timskerrittgroundworks.co.uk](http://timskerrittgroundworks.co.uk)

**TimSkerritt**  
LANDSCAPE & GROUNDWORKS

Turn your vision into a reality

Tim Skerritt Landscape & Groundworks offers a comprehensive range of services to both commercial and domestic clients across Surrey.

From hard landscaping to extensive site excavations, we offer a high quality, honest, reliable and competitively priced service, guaranteed to meet all your needs. Contact us today to find out more.

**Foot Care Focus**

- Toenail cutting & filing, Diabetic foot care & advice
- Reduction and removal of hard skin, cracked heels & caluses
- Reduction of thickened nails and fungal infections
- Reduction & removal for corns & verrucas
- Treatment of ingrowing toenails & athlete's foot
- Clinic treatment or home visits available

APRIL STANDISH TCFCdip  
Foot Care Practitioner  
07397 154 000 [april@footcarefocus.co.uk](mailto:april@footcarefocus.co.uk)

# ANSWERS TO MAY CROSSWORD

ACROSS: 1 Griffin 5 Tsarina 9 Ivory 10 Overtrump 11 Analytical 12 Oder 14 Kindergarten 18 Weightlessly 21 Fret  
22 Disappears 25 Cautioned 26 Ouija 27 Disrobe 28 Obliges  
DOWN: 1 Guitar 2 Isobar 3 Fly-by-Night 4 Naomi 5 Thesaurus 6 Acts 7 Inundate 8 Aspiring 13 Gallup Poll  
15 Dalliance 16 Two-faced 17 Hideouts 19 Daring 20 Oscars 23 Audio 24 Dido RR-M





## Reflexology

Valerie Dexter, IIR AOR  
Clinical Reflexologist

07968 777941  
val@enhancingenergy.co.uk  
Dorking based

**Treat your feet to treat your whole body**  
relieves stress headaches sciatic pain  
nervous tension aids sleep digestive disorders

## Julie Watts Family Law



AN AFFORDABLE AND EXPERIENCED PROFESSIONAL  
ALTERNATIVE TO TRADITIONAL SOLICITORS

- Divorce • Arrangements for children • Finances
- Court Proceedings

PROUD TO PROVIDE A DIFFERENT KIND OF SERVICE

- Affordable fees • Straight-talking advice
- Practical, real support

Contact me for a consultation

07808 572157 juliewattsfamilylaw.co.uk



## GARDENING

£15 per hour – Free quotations

– SERVICES –

— Gardening Maintenance —

— Hedge Trimming Specialists —

— Garden Design —

— Soft Landscaping —

07740 308 490 contoursgardening@outlook.com  
www.contoursgardening.com

## Mole Valley Mowers



Open  
Monday to Friday  
8 a.m. - 5 p.m.  
& Saturday  
8 a.m. - 1 p.m.

All leading makes of lawn mowers  
& garden tractors catered for

Reasonable rates

Free estimates & friendly service

Paul White Bookham 01372 458008



**Treeline  
Services Ltd**

**Tree Health Care Specialists**



Chadhurst Farm, Coldharbour Lane, Dorking, Surrey RH4 3JR

Tel: 01306 741800 Fax: 01306 885150

Email: james@treeline.co.uk www.treeline.co.uk

## Need help with your accounts?

If you run your own business you will appreciate how difficult it can be to keep up with your accounting paperwork.

However, meeting deadlines and understanding the financial health of your business are crucial to avoiding penalties and ensuring that the hard work you put in pays off where it matters – **in your pocket**

- Tailored accountancy local to Dorking – saving you time
- Fixed fees – saving you money • Free Xero software – simple invoicing

Call today to arrange a  
free no-obligation  
consultation

**01737 652 852**

esther@a4cgroup.co.uk  
natasha@a4cgroup.co.uk



## Dorking Pest Control Services

Local Authority Approved Contractors



Our Services include: Wasps, Bee Swarms, Hornets, Rats, Mice,  
Squirrels, Fleas, Flies, Ants, Cockroaches, Bed Bugs,  
Rabbits, Moles, Foxes and Deer



• Domestic, Commercial and Industrial • Contract Work • Preventative Control Programmes

**Experts in pest control throughout Surrey**

Office: 01306 743001 Ivor: 07710 117491 Chris: 07971 519415

**www.dorkingpestcontrol.com**

## The Box Hill School Flag

Many readers will be familiar with the Box Hill School flag that flies proudly outside Dalewood House. But do you know the significance of the flag, its 'rocket' crest and the associated traditions?

On Friday 3rd June 1966 a service was held to dedicate the original Box Hill School Flag. In glorious sunshine and in front of Dalewood House a brand new school flag was hoisted high up the flag pole. Once that first flag dedication service had been completed, the Headmaster Roy McComish and his wife Barbara left for Salem in Germany with the new flag to attend the 80th Birthday celebrations of Dr Kurt Hahn (Founder of the Round Square Association).

The new Box Hill School flag was proudly hung throughout that weekend in Salem alongside the flags of the seven other founding Round Square schools. It was at this service in 1966 that Roy McComish announced, following the tradition at other Round Square schools, that there would be a Box Hill School flag service at the start and end of every term.

From that moment on, the flag would be carried into St Michael's Church by the Guardians for each of the flag dedication services at the beginning and end of each term. Our most recent OB Guardian Josh Barnett (2009 – 2016) like many Guardians before him, remembers his pride at representing the whole school as he carried the flag down the church aisle. We still continue to have Flag Services to this day although with the full school of 420 pupils we now struggle to fit everybody into the church.

It was at that original flag dedication service in 1966 that Roy asked and answered the question "What are these ideas and ideals to be enshrined in our School Flag?" His answer:

**Compassion** and help to the weak, sick or injured. **Honesty** of character and individual responsibility. Good learning leading to **independence** in thought and action, **self-reliance** in mind, body and spirit.

Roy asked each pupil at that time to think about how they individually implemented these ideals in their everyday lives. The same ideals that

today's students are encouraged to embody and honour throughout their time at Box Hill School and beyond.

It is worth mentioning the Box Hill School 'Rocket' itself. Designed by Roy McComish it is open to individual interpretation but Roy himself saw it as a symbol of growth, describing it as 'a plant in which both the roots and the flowers are visible – it follows that good roots and good nourishment are the necessary prerequisites for the sturdy plant and the good flower – interpreting the roots as the ideals and the best traditions of the past generations – which in turn reminds us of our indebtedness to the past and the flowers as our special ways and methods for achieving our aims for our own day and generation'.

What of the flag pole? Today the flag flies from a metal pole but the story surrounding the original flag pole is quirky in true Box Hill School style! Some Old Boxhillians will remember George Burt the school's first caretaker. There are many tales about George, apocryphal and otherwise which describe his enormous strength. Told during his lifetime as well as after his death they amount almost to folklore. But one flag-related story is that at the time of the Coronation of Queen Elizabeth in 1953, the village of Mickleham decided, at quite short notice, to celebrate by holding a pageant on what is now the school's playing fields. Many local residents had recently finished building the Pavilion, which is now owned by the school, but for the great occasion a flag pole was also needed. On the day before the Coronation, George was commissioned to produce a flag pole, painted white and with a Union Jack flying from the masthead, by first light the next day. Nobody knows how George managed it, or where the tree came from (rumour has it that a tall pine was missing from Norbury Park about that time!) but sure enough as the sun rose on the great day there was a straight pole erected by the Pavilion, thirty-five feet high, painted white, the paint still sticky and wet – with the Union Jack flying from the top, and no sign of George anywhere. Headmaster Roy McComish wrote that 'the enormity of the task can be seen by



Detail of 1982 flag

us any day by taking a look at this flag pole which nowadays stands outside our main building and from which flies the school flag. To lower this for annual maintenance purposes usually engages the full energies and concentration of at least four but preferably six men, or senior boys'.

And what of the original flag that flew from that flag pole? It was made of a green cotton material with the white ribbon design of the rocket hand stitched in the middle. The design, we know was created by our founding Headmaster Roy McComish, but who made the physical flag? We were informed recently by Mrs Jane Seymour, (Box Hill School Housekeeper, 1959 – 1987) who many of you will remember fondly, that it was the long serving Matron of Dalewood House, Rosa Doce (1962 – 1993) who made that original school flag. Rosa now lives in Spain, but during her time at Box Hill School she was said to have had 'boundless energy, and roused generations of reluctant girls to go out on their morning runs'. She was also noted as being a 'most brilliant needlewoman', the obvious choice to make the first Box Hill School Flag.

Today the original Box Hill School flag is not as resplendent as it once was. Years of outside wear and tear eventually took its toll and after its great service to the school it has been rolled up and kept safe for a number of years, stored in the Headmaster's office. The flag is in desperate need of some preservation work and the hope is that funds can be found to have it restored, framed and once again hung in a prominent place in Dalewood House – to remind us all of the Box Hill School Flag ideals of **Compassion, Honesty, Independence and Self-reliance**.

Reprinted from Spring 2017 issue of *Out of the Box, Newsletter for Old Boxhillians*.



**TONY WINCH**  
**CARPENTER, JOINER  
 & CABINET MAKER**  
[www.tonywinch.com](http://www.tonywinch.com)  
 01306 742373  
 07969 016 924

**PLASTERING**  
 John Hooper  
*over 30 years' experience*  
 Work includes float and sett, skimming, screeding,  
 traditional rendering, modern coloured rendering  
 (monocouch) cornicing  
 from small ceilings to large newbuilds  
 07946628190 01737423489  
[j.hooper-plastering@hotmail.co.uk](mailto:j.hooper-plastering@hotmail.co.uk)

**R A BUTLER**  
 INTERIOR AND EXTERIOR  
**PAINTING & DECORATING**  
 OVER 30 YEARS' EXPERIENCE  
**BUILDING  
 REPAIRS  
 UNDERTAKEN**  
 PATIOS, DECKING ETC NO JOB TOO SMALL  
 LOCAL REFERENCES IF NEEDED  
 01372 372586 / 07776 256131

**COOK**  
**ARBORICULTURAL LTD**  
 Professional planting, Tree surgery,  
 Surveying & Remedial work in Surrey  
 Tree removals ~ Stump Grinding ~ Planting  
 Tree reductions & pruning ~ Tree health & development site surveys  
 For a free, no obligation quote please get in touch:  
 07739 681 706 alex@cookarbor.co.uk www.cookarbor.co.uk  
 Michaela's Cottage, Fredley Park, Mickleham, Dorking RH5 6DE

**Shakespeare Electricals**  
 Your local electrician  
 Fully qualified  
 and insured  
 10% off labour costs with this advert  
**Call Matthew on 07783 553880**  
[www.shakespeare-electricals.co.uk](http://www.shakespeare-electricals.co.uk)

**Building Plans**  
 For home improvements & extensions  
 Including planning & building regulations  
 Fast efficient service at competitive rates  
**MICHAEL LLOYD**  
 CE Eng MICE MINT  
 For free consultation:  
 Phone: 01483 205479 or 07958 791 402  
 Email: michael@lloydplanning.london

**OSTEOPATH**  
**NICK WOOLLEY**  
 BSc (Hons) Ost  
 Osteopathy for all ages  
 Also offering Cranial Osteopathy and  
 Myofascial Acupuncture needling treatments  
 For advice or an appointment  
 01372 379270  
[www.Headleyosteo.com](http://www.Headleyosteo.com)



We have fitted in a lot since the half-term break, but one of the most exciting developments for the children has been the return of our chickens. Penguin, Tufty and Crackle had to leave the nursery temporarily when the government put in anti-bird flu measures for all poultry owners. Now that the rules have been relaxed, we are delighted to have the girls back in the garden. The children take it in turns to be 'Star of the Day' at St Michael's, bringing in an item from home to talk about with the other children. After they have taken centre stage, the 'star' gets to go into the hen house and look for any eggs which the chickens have laid that day and take them home. We have had reports of some delicious scrambled eggs, omelettes and very yellow cakes from the bright yolks. Staying on an avian theme we are also excited that a pair of blue tits has started nesting in our forest school bird box. We will be keeping a close eye on the box over the next few weeks in the

# A Day at the (Chicken) Races...

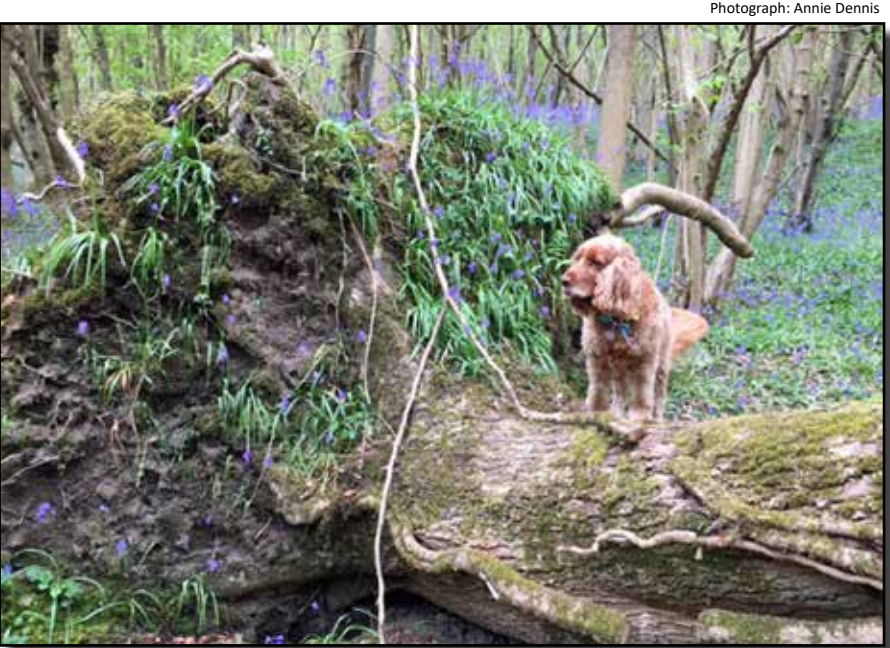


Hilary and the children welcome the hen back to the Nursery

hope of spotting the chicks once they are ready to make their entrance into the world. The arrival of the blue tits fitted in nicely with one of our themes this term which was 'life cycles'. We have been noticing what has changed since the Easter break, and started to think about mini beasts and growing plants. The children have planted some cress seeds to look after and grow at home, we have learned some growing rhymes and songs and visited the park to see what's growing there too. We are also able to see the changes happening in our tadpole tank.

The committee have also been busy with a number of social activities, and a dads' working party has helped tidy up more areas of the forest school, de-bramble the chicken pen and finished a few other fixit jobs too. A collection of unwanted clothes and shoes donated to a recycling company has launched our fundraising this term, and we have big plans for raising further vital funds for the nursery at the St Michael's Spring Fête at the end of May with two stalls: chicken racing and badge making.

Debbie Turner



Bluebells growing over a tree stump in Margery Wood

**BRAIN TEASER**  
 Can you translate this diagram into words?  
**M CE  
 M CE  
 M CE**  
 Answer on page 26.

Planning an event in late August / early September? Please note that there will be no August magazine. Details need to go into the July MPM. Copy deadline 11<sup>th</sup> June.





## Mickleham Village Hall, Dell Close

Weekdays 9.15 a.m. - 12.15 p.m. (term time)

WITH OPTIONAL LUNCH CLUB

On Mondays and Thursdays there is the option for children to stay until 2.45 p.m.

Maximum 26 children per session

• playing naturally • learning naturally

We offer an excellent range of pre-school activities for 2½ to 5 year-olds where they can learn through play in an informal, friendly atmosphere.

Contact us for more information about admissions  
01372 361021 [www.stmichaelscommunitynursery.co.uk](http://www.stmichaelscommunitynursery.co.uk)

## Mickleham & Westhumble Youth Group



**School years 7-9 for 11-to 14-year olds  
on alternate Friday evenings during term time**

**23<sup>rd</sup> June and 7<sup>th</sup> July**

**7.15 - 8.30 pm**

**Mickleham Village Hall**

**For more information contact**

**Jonathan or Sarah Blake 0778 7126 966**

**An opportunity to meet up with friends and join us for games & fun!**

## Tuesday Toddles

A new friendly group in Mickleham for kids aged 0-5 years to play along side their Childminder or Registered Nanny

Mickleham Village Hall

Every Tuesday. Term time only 9.30 - 11.30 a.m.

For more information please contact:  
Natalie 07790 318 653 or ask to join our closed Facebook group for Tuesday Toddles for regular updates.



St Michael's School is collecting Sainsbury's Active Kids vouchers. Please give to a St Michael's parent or Ben Tatham at St Anthony, Pilgrims Way or leave at the school.



**BRAIN TEASER answer: THREE BLIND MICE**

## Off to the Farm!

*This month our talented Reception Class teacher, Yvonne Reynolds, recounts a recent fun-and-learning-filled trip to Ladyland Farm in Horley.*

This term our Reception class at St Michael's School have loved learning all about animals, we enjoyed our topic so much that we decided to make our first school trip a visit to Ladyland Farm. Described as a 'Living Classroom', the farm provided the children with plenty of space to run and explore, as well as having a hands-on teaching session from one of their farmers. The children loved having the opportunity to learn about lots of animals living on the farm and the countless jobs that the farmers have to do every day.

We discovered how the farmer's early 15<sup>th</sup> century house had been made, using tree trunks as foundations and straw for the walls. The children were fascinated to hear that the house has a well in the middle of it. They were able to think of many other things that make it different from our own houses. We decided that we were glad we had running water for baths, as we didn't fancy having to have a bath in the river! We also had the chance to feed some sheep and goats, and learned that it is impossible for the sheep to bite us, as they don't have any top teeth!

As we moved around the farm the

children spotted different plants and flowers and we had great fun thinking about what they might be. We discussed different foods which could be grown on the farm, and what plants need to help them to grow. They remembered the story of 'The Little Red Hen' and how she grew and harvested the wheat to help her make some bread. Then we chatted about how we could get food from animals, and Farmer Felicity told us how we could use milk from the cows, goats and sheep to make cheese, yoghurt and even ice cream, before we were able to feed the hungry baby calves using a bottle.

We had to be very quiet in one barn where some chicks had just hatched out of their eggs. The children listened excitedly as Farmer Felicity told us about how the chick grows inside the egg, using the yolk as their food. We were very careful when handling the chicks, making sure we only used one finger to stroke them, and stayed away from their tiny faces. We thought of other animals which hatch out of an egg, and we compared the size of egg from a hen, a duck and even an ostrich!

A definite highlight of the trip was a ride on Farmer Phillip's tractor! The



**St Michael's School**

[www.stmichaels-dorking.surrey.sch.uk](http://www.stmichaels-dorking.surrey.sch.uk)

children really enjoyed riding around the farm in the trailer, we had to hold on very tightly though as it was rather bumpy! We were rather worn out after all that bumping around, so a pit stop for lunch was needed next to re-fuel. In the afternoon we were lucky enough to have the sun shine on us, and everyone thoroughly enjoyed climbing on the straw bales and exploring the old tractors.

Once we were back at school we shared our favourite parts of the trip with each other, created some amazing drawings of the animals, and remembered some of the facts we had learned about the animals. We have been writing our own thank you letters to Farmer Felicity and Farmer Phillip and we are eagerly awaiting their reply! The trip has provided us with plenty of learning opportunities and interesting discussions, and a memorable day for all the children. Yvonne Reynolds

Photograph: St Michael's School





# Cryptic Crossword

Across

- 1 & 3 A small amount to say about German and 27 (4,6)
- 3 see 1A.
- 6 Total? Sounds like only a part! (3)
- 9 Part of a rose - pale or dark green (5)
- 10 The second edition is running (9)
- 12 Cockney joke:  
Q - What's the difference between a \_\_\_\_\_ and a buffalo?  
A - You can't wash your face in a buffalo (5)
- 13 National Trust let loam be spread on the plot (9)
- 14 Let it be proficient and responsive (8)
- 15 A month in charge of a type of tank (6)
- 18 Swing arrangement of 8 (6)
- 20 Doctor gained honour after fighting in closet (8)
- 24 Important doctor and his men went to America (9)
- 26 An eccentric turn (5)
- 27 Parish Council note set arrangements for festival (9)
- 28 Follow your mother on principle (5)
- 29 Characteristic of bone or Beaune (3)
- 30 Time of year to add pepper (6)
- 31 Man, for example, in paisley (4)

Down

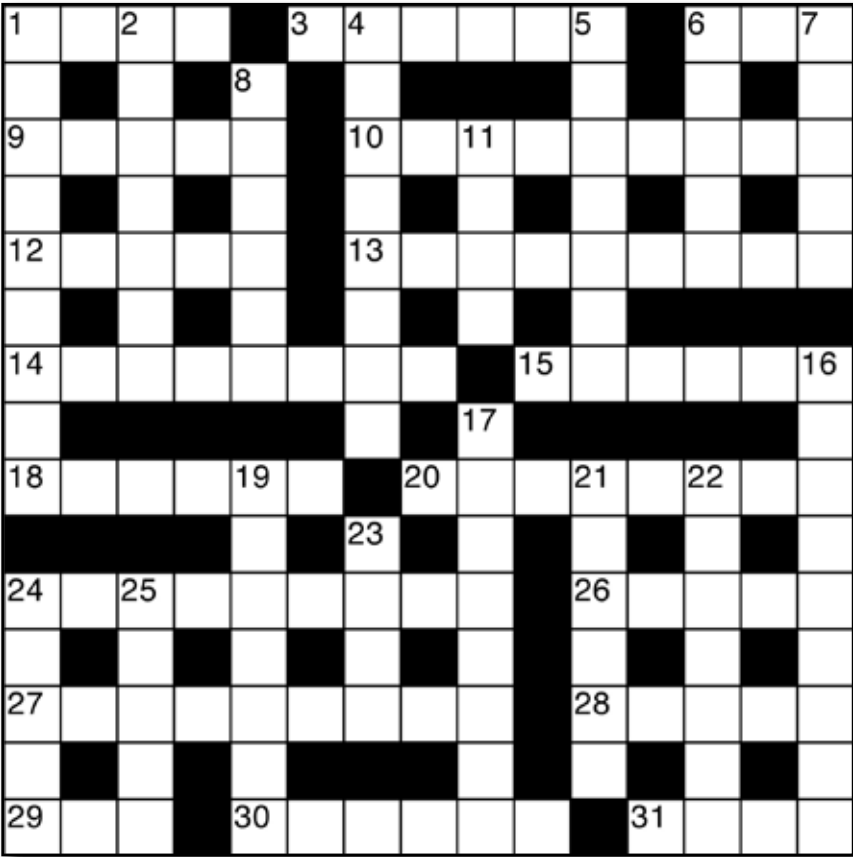
- 1 Ward receives ASBO about hospital skiffle instrument (9)

- 2 I am out-of-date and in complete deadlock (7)
- 4 A French stud with pronounced mood swings? (8)
- 5 Any Getz composition will flow naturally (7)
- 6 Left inside – in the children's playground (5)
- 7 Sounds like a very small amount of power (5)
- 8 Lady lawyer by a Scottish valley (6)

- 11 Control regret about Liberal (4)
- 16 Defeat slow friend (9)
- 17 Bogus, over-the-top rising register (8)
- 19 Hangs about in the Gunslinger Saloon (7)
- 21 Resolve to drop police in the river (6)
- 22 Angels left out after golden fruit (7)
- 23 An area of London – also Hong Kong and Manhattan (4)
- 24 Regretted having got a motorbike? (5)
- 25 One may be wrapped in my bread (5)

R R-M

Answers to the May Crossword are on page 21



Photograph: Ben Tatham



Wild Garlic in Norbury Park – 4<sup>th</sup> May

6 en-suite rooms from £89 per night including breakfast  
OPEN

Monday – Saturday: noon – 11 pm  
Sunday: noon – 10.30 pm

BREAKFAST (open to non-residents) SERVED  
Monday – Thursday: 7.30 – 9.30 am; Friday & Saturday: 8 – 10 am

LUNCH & DINNER SERVED  
Monday – Thursday: noon – 3 pm & 6 – 9 pm  
Friday & Saturday: noon – 3 pm & 6 – 10 pm  
Sunday: noon – 6 pm

The Running Horses, Old London Road, Mickleham, Nr Dorking, Surrey RH5 6DU  
Call Us: 01372 372279 Email: [book@therunninghorses.co.uk](mailto:book@therunninghorses.co.uk)

## J S Wilson

Mickleham

# Carpentry & Building Services

Extensions ~ Conversions  
Refurbishments ~ Property Maintenance  
Fully guaranteed ~ Fully insured  
*One call WILL solve it all*

Contact Jason on: 07761 926684 or 01372 379359  
[jswilsonconstruction@gmail.com](mailto:jswilsonconstruction@gmail.com)

RESIDENTIAL • COMMERCIAL  
AGRICULTURAL • SCHOOLS • ACOUSTIC  
HOARDING • GATES • SECURITY

RICHARDSON & BRADS FENCING LTD  
T: 01306 640 143 - 01483 414 74  
E: [info@rbfencingltd.co.uk](mailto:info@rbfencingltd.co.uk)  
W: [www.rbfencingltd.co.uk](http://www.rbfencingltd.co.uk)  
A: 83 SOUTH STREET, DORKING, SURREY, RH4 2JU  
UNIT 45 MARTLANDS INDUSTRIAL ESTATE, SMARTS HEATH LANE, MAYFORD, GU22 0RQ

# John Wadsworth

INDEPENDENT ESTATE AGENTS

CALL NOW FOR YOUR FREE VALUATION  
01372 450500

[www.johnwadsworth.co.uk](http://www.johnwadsworth.co.uk) [sales@johnwadsworth.co.uk](mailto:sales@johnwadsworth.co.uk)  
A professional, efficient and friendly service



**Neil A Mason**  
Established 1976



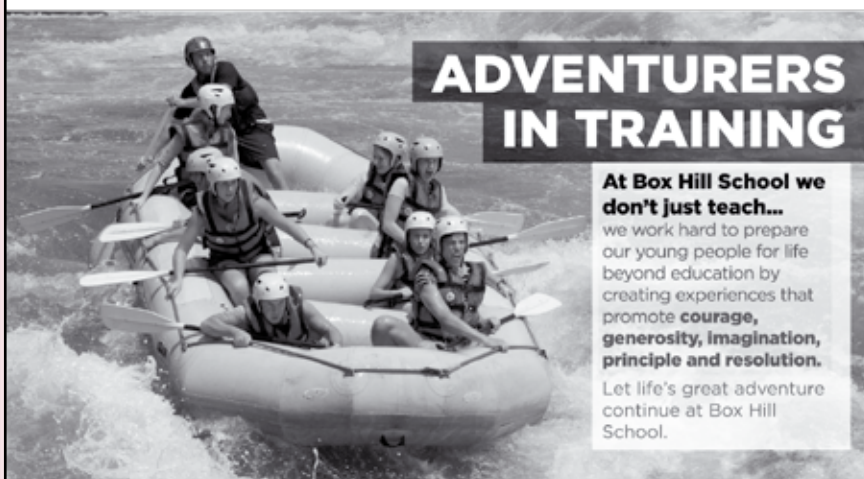
**All electrical & plumbing work undertaken**

Inspections and Testing  
Extra Points, Rewiring etc  
Security and Emergency Lighting  
Temporary Power and Lighting Hire  
Public Address and Sound Systems  
Installed or For Hire  
Complete Bathroom and  
Fitted Kitchen Installation

**WESTHUMBLE**

Telephone: 01306 889073

INSPIRATIONAL  
**Box Hill School**  
for girls and boys aged 11-18



**ADVENTURERS  
IN TRAINING**

**At Box Hill School we don't just teach...**

we work hard to prepare our young people for life beyond education by creating experiences that promote **courage, generosity, imagination, principle and resolution.**

Let life's great adventure continue at Box Hill School.

Telephone: **01372 373382**  
or email **admissions@boxhillschool.com**  
**www.boxhillschool.com**

**DAVID TOBITT  
CARPETS**

**FINE CARPETS SUPPLIED  
AND FITTED**

*We have over 30 years' experience  
working in Dorking and the  
local area*

A comprehensive range  
of carpets available

We can bring samples  
to your home

Advice given on all  
types of carpet work



**WE TAKE A PRIDE IN  
WHAT WE DO**

**01306 885032**

**www.davidtobittcarpets.co.uk**

**MARTIN BURGESS**  
**LANDSCAPE AND GARDEN DESIGN**



**CONSULTATION SERVICE FOR  
GARDEN PLANNING, PLANTING  
AND MAINTENANCE**

**01737 842289 / 07966 183395**

**HART SCALES & HODGES**  
**SOLICITORS**

*We have been serving the Dorking community since 1782 and are proud to support our local parishes*

**Our services include:**

- Buying and selling your home
- Extending your lease
- Commercial property
- Inheritance Tax planning
- Care fees and Asset protection planning
- Setting up a trust
- Wills and Probate
- Lasting Powers of Attorney
- Divorce Separation and Children
- Employment for employer and employee
- Litigation and dispute resolution
- Business advice

Please call us on 01306 884432 for a FREE initial consultation to discuss your requirements

**www.hartsscales.co.uk**