

Issue No. 251

# Hill & Valley

THE PARISH MAGAZINE OF HURSTBOURNE PRIORS, LONGPARISH, ST MARY BOURNE & WOODCOTT

50p

September 2021



*'The Four Seasons'  
St Nicholas' Church  
Longparish*



# THE WOODCOCK WINDOW

## THE FOUR SEASONS



*The Holy Spirit*

*Crab apples*

*Woodcock*

*Drifting  
autumn leaves*

*Butterflies,  
mayflies*

*Adult  
brown trout*

*Water lilies*

*Flowering  
water weed,  
watercress*

*Fingerlings in the  
river current and  
weed*

*Snowdrops amidst  
snow and ice*

*Trout eggs laid  
in the river bed*

*Autumn*

*Summer*

*Spring*

*Winter*

Text from Psalm 1:3

*And he shall be like a tree planted by the waterside, that will bring  
forth his fruit in due season. His leaf shall not wither; and  
whatsoever he doeth, it shall prosper.*

## Services in the Parish Churches

### September 2021

Our churches are open for services. **But the times may be different from previous years, so please check.**

The Benefice will continue to have an **11am Zoom service**. If you are isolating, in a vulnerable category or are unsure, please stay safe, stay at home and come to Zoom. All Zoom details (incl. the link) are available from the Church wardens or Dodie Marsden. Please note that **St James', Woodcott is moving from 9.30am to a 9.00am service** from this month for its bi-monthly services.

#### 5<sup>th</sup> September - Trinity 15

St Andrew's, Hurstbourne Priors	11.00am	<i>Holy Communion</i>
St Nicholas', Longparish	9.30am	<i>Holy Communion</i>
St Peter's, St Mary Bourne	11.00am	<i>Family Communion</i>
St James', Woodcott	<b>9.00am</b>	<i>Holy Communion</i>
* <i>Home Zoom service at 11.00am</i>		

#### 12<sup>th</sup> September - Trinity 16

St Andrew's, Hurstbourne Priors	6.00pm	<i>Evensong</i>
St Nicholas', Longparish	9.30am	<i>Holy Communion</i>
St Peter's, St Mary Bourne	9.30am	<i>Animal Service</i>
St James', Woodcott	no service	
* <i>Home Zoom service at 11.00am</i>		

#### 19<sup>th</sup> September - Trinity 17

St Andrew's, Hurstbourne Priors	11.00am	<i>Holy Communion</i>
St Nicholas', Longparish	9.30am	<i>Family Communion</i>
St Peter's, St Mary Bourne	9.30am	<i>Family Communion</i>
St James', Woodcott	<b>9.00am</b>	<i>Animal Service</i>
* <i>Home Zoom service at 11.00am from All Hallows</i>		

#### 26<sup>th</sup> September - Trinity 18

St Andrew's, Hurstbourne Priors	11.00am	<i>Animal Service</i>
St Nicholas', Longparish	11.00am	<i>Animal Service</i>
St Peter's, St Mary Bourne	9.30am	<i>Family Communion</i>
	6.00pm	<i>Evensong</i>
St James', Woodcott	no service	



A Thanksgiving Service to celebrate the life of Tony Grunsell will be held in St Peter's Church at 2.30pm on Saturday 18<sup>th</sup> September. All friends of Sandra and Tony will be very welcome.



**Big Birthday!**  
**Gordon Pearce** of Meadow Set, St Mary Bourne  
**100 years old**  
on 28<sup>th</sup> September  
**Many congratulations!**

For all enquiries about Baptisms, Weddings, Funerals in any of the parish churches, please contact Karen in the Benefice Office  
☎ 01264 738 308 or email: office.brightwaters@btinternet.com

If you wish to contact the Revd Canon Dodie Marsden, please call ☎ 01264 738 211 or email: **dodie.marsden@gmail.com**

If you are unable to contact Dodie, in an emergency, please call ☎ 01264 720 215 or ☎ 01264 738 489

• For details of **Roman Catholic Services** in Whitchurch or Andover ☎ 01264 352829

• **Methodist Minister** for our parishes: The Revd Rachel Borgars, 11 Lapwing Rise, Whitchurch, RG28 7SU ☎ 01256 895878 or email: **rachel.borgars@methodist.org.uk**

#### From the Church Registers

##### Baptisms

"Shine as a light in the world to the glory of God the Father."

Arthur Grace-O'Neill - on 11<sup>th</sup> July at St Peter's  
Clara Ponting - on 24<sup>th</sup> July at St Nicholas'  
Jensen Grunsell - on 1<sup>st</sup> August at St Peter's  
Jemima Claridge - on 8<sup>th</sup> August at St Peter's  
Riley Ingrem - on 15<sup>th</sup> August at St Nicholas'

##### Weddings

"Marriage is a gift of God in creation ..."

Anna Wills and Rory Horgan  
on 3<sup>rd</sup> July at St Nicholas'  
Kirsty Turnbull and Pat Allerton  
on 10<sup>th</sup> July at St Nicholas'  
Carol Mantle and Kevin Smith  
on 21<sup>st</sup> August at St Nicholas'  
Laura Hustler-Wright and Alex Jones  
on 28<sup>th</sup> August at St James'

##### Funerals

"Into God's loving care we commit you ..."

We would like to record the deaths of:

**Audrey Ewing** - mother of Peta who died on 9<sup>th</sup> June  
**Barbara Cobbold** - mother of Terry who died on 7<sup>th</sup> July  
**Rose North** - wife of Les who died on 16<sup>th</sup> July  
**John Woodcock** - Patron of St Nicholas, Longparish who died on 18<sup>th</sup> July  
**John Harrison** - father of Alex who died on 1<sup>st</sup> August  
*We remember them and their families in our prayers.*



# John Woodcock OBE 7<sup>th</sup> August 1926 – 18<sup>th</sup> July 2021

Named by his cricket writer friends **The Sage of Longparish**, John, our village legend, died peacefully at home at the Old Curacy on 18<sup>th</sup> July aged 94. John was born in the Rectory, Longparish, in 1926. His father, the Reverend Parry Woodcock, was 70 when John was born. He had been the Rector of Longparish since 1906. John's grandfather was born in 1813 two years before the battle of Waterloo. John inherited the Right of Advowson (Patron) of the living from his father and therefore vetted and approved the appointment of rector of the parish. His father and family moved to Oxford in 1933 and John returned to live in the Old Curacy in 1947 and remained there until he died. He never married.



John with his older brother Hugh on the milk cart outside the Old Curacy

John went to the Dragon School, Oxford where his love of cricket began. John played for his school and recalled that when his father, who died when he was 12, came to watch him play people would say "how nice to see your grandfather here" He moved on to St Edward's Oxford. It was

there, aged 15, that he borrowed a pair of plimsolls from another boy from which a blister infected his hip and he contracted life threatening septic arthritis. In 1955 he had pioneering hip replacement surgery followed by a further 6 operations. Asked whether they were all on the same leg he replied "no my left leg is winning 4-3". Remarkably he continued his love of sport playing cricket for his school first XI. He went on to Trinity College Oxford where despite his injury he won hockey blues as goalkeeper in 1946 and 1947. He had a trial for the university cricket team and was selected for 'The Authentics' the second XI. He went down from Oxford with a fourth class honours degree which he attributed to being "very lazy".

On leaving Oxford JW thought he would become a teacher. He qualified and spent 2 terms at a secondary school in Basingstoke. However he had previously met Jim Swanton known as EW, the cricket correspondent of the Daily Telegraph who offered him the job of scorer and assistant on the historic 1948 Ashes tour, Don Bradman's farewell tour. Despite being "hopeless at figures" he survived this introduction to cricket journalism and was asked to be 'dogsbody' to EW on the 1950-51 Ashes tour to Australia. His duties included whisky pouring, chauffeuring, filming the tour with an enormous 35mm camera and airmailing 40,000 feet of film home in weekly instalments to be shown on BBC newsreels at least a week late. He also did some writing and this Ashes tour was the start of his lifelong devotion to cricket journalism and he became one of the finest writers, if not the finest writer in the history of the game.



At home with Mike Atherton his successor at The Times



Behind the camera in Australia in 1950

In 1952 he caught the attention of the correspondent of the Manchester Guardian who having fallen in love left the paper leaving a vacancy for reporting cricket. They engaged him to cover the 1952 Tests against India. He stayed with the Guardian for two years and in 1954 was taken on by The Times where he stayed as cricket correspondent until 1987 and then remained on the staff submitting regular articles. The last in 2020 was a tribute to the veteran West Indian cricketer, Sir Everton Weekes. He reported on 400 test matches. All told he had at least one piece published in The Times every year for 66 years.

Colleagues said of him:

*"John Woodcock is the most thorough watcher of a day's cricket I have ever known"*

*"The finest of all cricket writers"*

*"John Woodcock was the kind of scribe we'd all like to be - elegant, informative and generous with a beautiful turn of phrase"*

*"Some other cricket correspondents of his generation were more celebrated but he was the best"*

*"He was incapable of filing a dull piece"*

He also edited Wisden Cricketers' Almanac for 6 years from 1981 until 1986 and was credited with improving its reputation and standard. He wrote for The Cricketer magazine and for Country Life. The only seriously controversial episode in his career occurred when he declined to support the boycott of South Africa during the apartheid era (the D'Oliveira affair). He later acknowledged that he had been wrong over this.

Having been chairman since 1966 he was President of the Cricket Writers' Club from 1986 to 2004. In 1996 he was awarded the OBE for services to sports journalism. In 1987 he was named Sports Journalist of the Year and in 2018 at a Sports Book Awards evening he received a special award for Outstanding Contribution to Sports Writing.

His much beloved home was Longparish where from an early age he fished and became a skilled shot. Although he approached his work with the utmost seriousness, he had fun too, and often said he was most proud of two notable hat-tricks: playing golf with Herbert Sutcliffe, Len Hutton and Geoffrey Boycott, the three Yorkshire batsmen to make more than one hundred centuries; and shooting duck with Harold Larwood, partridge with Imran Khan and grouse with Ken Barrington.

At home there was a succession of Springer spaniels – Spinner, Googly, Flight, Slip, Stumper – until he ran out of Cricketing names "I can hardly call one Persistent Short Pitched Bowling can I?" he said.

He was devoted to the village and as a devout Christian was an ardent supporter of St Nicholas Church. In 2015 to commemorate 250 years of his family's link to the church he commissioned a beautiful stained glass window depicting the four seasons and the River Test – see front cover of the magazine.

John was hugely supportive of Longparish Cricket Club. Over many years he gathered a guest team to play against Longparish. To the delight of the home team they would find themselves playing against such icons of the game as Len Hutton, Colin Cowdrey, Richie Benaud, Ian Redpath, Ken Barrington, Frank Tyson and more. Richard Gearey, Vice President of the Club writes: "I was born in Longparish just as the war was ending, and lived there for thirty years. My earliest education, such as it was, took place in Longparish C of E school, which took me alongside The Curacy on a daily basis. I remember being quite awestruck when we were told 'Mr Woodcock is in Australia' or 'in India' Our small classroom had one of those large wall maps of the world with the Commonwealth countries printed in pink, and it helped my young enquiring mind get to grips with countries Mr Woodcock might be visiting, and their place in the world....well, as far as Mercator the map maker was concerned!

It was in my mid teens I became increasingly involved with Longparish Cricket Club, and with other Longparish players I occasionally met and gradually got to know John when he was at home. When I achieved the age which would legally allow me into The Plough, or the Cricketers, and when he was in residence in his favourite seat, with spaniel under his feet, he would talk a little about cricket, but just as much about the detail of life of the places he had visited. I can well remember I asked the question, somewhat wide-eyed I suspect...what was your favourite place in the world? He smiled. It was the easiest question. On my way home he said, from wherever, when I reach the top of Southside Hill and look down into the Test Valley and Longparish within it, that is my home, my favourite place.

There are many well told stories about John's involvement with Longparish Cricket Club, and I've been hugely privileged to have participated in a good many of them...from grass roots village cricket to have socially rubbed shoulders with and played against some of the greatest cricketers of our time is scarcely believable.

Wonderful, wonderful memories"

In 1987 Longparish Cricket Club reached the final of the national inter village cricket championship played at Lords. On the day of the match John filed the report opposite in TheTimes. This exemplified his celebrated writing style and his loyalty to the village. Longparish won the final by 76 runs.



JW with John Heagren, the Longparish team captain at Lords on the morning of the match

# A timeless village has a day out with the angels

31/8/87

**JOHN WOODCOCK, Cricket Correspondent, savours the appearance of his home village of Longparish in today's final of the National Village Cricket Championship at Lord's**

Three months ago 660 village sides set out on the road to Lord's, the vehicle for their aspirations being the Norsk Hydro village cricket championship. The two to have got there are Longparish from North-West Hampshire and Treeton Welfare from South Yorkshire. They meet this afternoon (1.30) in a match in which the cricket will be a good deal less bucolic than the popular conception of the village game.

Let me first declare my interest. I was born in Longparish (population 950) more years ago than I care to say and it is my home today. On returning there, after absences that are all too frequent, I sometimes stop on the top of Southside Hill and look down on Longparish, nestling in the valley below and think what a haven it is with "the kiss of the sun for pardon, and the song of the birds for mirth."

It has a beautiful cricket ground, with an old thatched pavilion, and the River Test, the most famous trout stream in the world, rippling and glistening beside it. A fortnight ago, while Longparish were winning a wonderfully exciting semi-final there against St. Fagans from Wales and 1,500 people were being offered home-made cakes, fish rose not a hundred yards away to flies with lovely names like the Blue Winged Olive and the Pale Watery Dun. The bells had not long been rung down as the last parishioner hurried to evensong at a church of great antiquity.

How many village cricket clubs have been equally unaffected by the passage of time I would not know. Not many, I imagine. There can be few left with two very old bags, one for the first XI and one for the second, containing three pairs of faded and floppy pads, two bats and the wicket-keeping gloves. Sides with ambitions in the Norsk Hydro take their cricket pretty seriously and Longparish are no exception. The communal helmet has replaced the corporate box.

We are well known in the district for our cricketing tradition and have been since well

into the last century. The landlord gives the ground for a bottle of whisky a year; his head gamekeeper tends it lovingly when he is not tending his pheasants; his son, himself a keeper, captains the village team.

For 50 years now Mrs. Kingston and Mrs. Bowley have watched from the same bench. When Longparish reached the final in 1980 – their only previous appearance – a good many of those who went to Lord's to watch them were visiting London for the first time.

My only regret today is that not more of those who will be playing against Treeton either live in Longparish or were born there.

Thirty years ago there were very few who came in from outside. One's weekend guest got a game if he wanted it but that was about all. That this should have changed was inevitable, owing partly to the price of property in a delightful village within comfortable reach of London, and partly to the much more competitive nature of the cricket.

When I first took a side to play Longparish we gave them a game so long as there were 11 of us. But not any more. It began to change with the start of this village championship. On their own ground, and at full strength, Longparish now have just enough thoroughly good cricketers, I think, to beat the majority of sides turned out by, say, the Free Foresters or the Oxford University Authentics, or, dare I say it, the Hampshire Hogs.

To reach the semi-final of such an all-embracing competition is a great thing for a small village. It touches the whole community. Five charabancs will be going to Lord's from Longparish this morning. And what a thrill, too, for the players to be using the same dressing-rooms and balconies as the masters themselves and walking through the hallowed Long Room. Whoever wins today will feel for a while "only a little lower than the angels" . . . and it will be right and proper that they should.

Longparish will greatly miss his wisdom, love, humour and stories

With thanks to The Times, the Daily Telegraph, and the Guardian for use of some of their material





## Country Oak Buildings

Specialising in:  
Hand Made Oak Buildings  
Garden Structures and Follies  
Traditional Carpentry Techniques

Contact Nick 01962 776 217

Mobile 07919 987451

[www.countryoakbuildings.co.uk](http://www.countryoakbuildings.co.uk)

## Our Treatments

McTimoney Chiropractic  
Physiotherapy  
Podiatry  
Sports therapy  
Nutrition and allergies  
Bowen technique  
Alexander technique  
Counselling



**01264 324924**

36 East Street, Andover, SP10 1ES  
[www.chirosclinic.com](http://www.chirosclinic.com)



CLOCK BARN.

## Beautiful barn weddings

Clock Barn, Tufton Warren, Whitchurch, Hampshire, RG28 7RB

01256 630199 [clockbarn-weddings.co.uk](http://clockbarn-weddings.co.uk)



Images by Mia Hooper Photography, Jacob & Pauline Photography and Kit Myers Photography

## Tried - Tested - Trusted

*We only offer the best advice and a no-pressure sales calls*

# KJM



*Building quality since 1983...Triple Glazing Specialists*



**Windows, Doors, Conservatories in Hardwood, PVC and Aluminium**

Mylen Business Centre, Mylen Road, Andover SP10 3HR

Tel 01264 359355 I Fax 01264 353441 I e-mail: [sales@kjmgroupp.co.uk](mailto:sales@kjmgroupp.co.uk)



**[www.kjmgroupp.co.uk](http://www.kjmgroupp.co.uk) - 4 x Finalists "Installer of the Year" G-Awards**

## LONGPARISH PARISH COUNCIL REPORT FROM MEETING ON 12<sup>th</sup> July 2021

### Planning

The Parish Council had **no objection** to:

- **Ropers** felling of a tree, following advice by Tree Warden
- **Preston Cottage, Longparish** – Amended plans and information received showing changes to the proposed rear extension and the removal of the previously proposed new parking bay.
- **Harewood Holt, South Harewood** - Alterations and repairs to include new staircase, like for like replacement of existing dormer window, roof repairs, insulation to roof void and demolition of dilapidated modern outbuilding
- **Drove Cottage, Longparish** – Proposed replacement single storey rear extension
- **Raymond Brown/Fortis** – withdrawal of application

**Raymond Brown site** - The planning application for a permanent IBAA storage area on the site has been withdrawn, however it is anticipated that an amended planning application will be submitted in the future. The Parish Council representative will attend the Raymond Brown Liaison Group Meeting on 15<sup>th</sup> September.

**The Plough** – It was agreed to arrange a Plough Committee meeting with LCPL in August for an update on progress with the project.

**Open Spaces & Footpaths** - The vegetation along the spinal path has been cut. Potential sites for a memorial bench/tree to mark the Queen's Jubilee next year are being explored – the PC welcomes any suggestions.

### Parish Council Meetings

**There was no Parish Council meeting in August but a Planning Meeting was held on 23<sup>rd</sup> August and will be reported on at the September PC meeting.**

Face-to-face meetings at the Village Hall have now recommenced however, adhering to Covid regulations, capacity of the hall is reduced, so anyone wishing to attend a PC meeting should contact the clerk [clerk@longparish.org.uk](mailto:clerk@longparish.org.uk) prior to the meeting, so that we can carefully monitor numbers. The next Parish Council Meeting will be held at 7.30pm on Monday 13<sup>th</sup> September 2021. Parish Council Meetings are public, and parishioners are welcome to speak on specific agenda items by prior arrangement with the Chairman - Christian Dryden (Tel 720398, or email [christian.drydenpc@longparish.org.uk](mailto:christian.drydenpc@longparish.org.uk)) Minutes of previous meetings are available on the current or archived Longparish website [www.longparish.org.uk](http://www.longparish.org.uk)

### FoLS 100 Club Winners

- 1st Korrie Woodward
- 2nd Georgina Montague
- 3rd Sid Bryant



### Friday Lunch Club Autumn Dates 2021

**Longparish Village Hall : 12.00 - 2.00pm**

As restrictions are lifted, the Lunch Club is open to anyone in the community. We do ask you to book so that we have an idea of numbers and there may still be restrictions on numbers for the hall. We serve a light lunch, all homemade, of soup and roll followed by cake and tea and coffee for just £3.

After lunch there is a talk or quiz - ideas for speakers always welcome.

**Friday 24<sup>th</sup> September**

**Friday 29<sup>th</sup> October** - "Flying High: The Army in the air, their stories" presented by The Army Air Museum

**Friday 26<sup>th</sup> November**

**Friday 17<sup>th</sup> December** - Christmas Lunch and Quiz

To book a place and transport call **Andrea Harris 720457** or **Christian Dryden 720398**

### KEEP TEST VALLEY BEAUTIFUL – ASH PILE UPDATE

Raymond Brown/Fortis say they intend to submit an amended planning application to make permanent the "temporary" incinerator ash pile (IBAA) at their "EnviroPark".

At the time of going to press villagers at Longparish and Barton Stacey are still watching for the expected application to be lodged with Hampshire County Council.

The temporary permission, caused by a drop in sales of the potentially hazardous building material during the early pandemic, expired in March. However, work is still continuing at the site.

The Keep Test Valley Beautiful group say that sales of IBAA have now recovered so there is no need for extra storage and the application appears to be simply an attempt at further expansion.

### LITTER FREE LONGPARISH

**Longparish Friday Litter pick Friday 17<sup>th</sup> September**

- meet behind Village Hall 9.15 am.



Why not join the band of regular litter pickers in Longparish by adopting a road or footpath.

The Parish Council can provide litter picking sticks, hoops and bags.  
Tel **Christian Dryden 720 398**



## Count on Us Bookkeeping Ltd

Bookkeeping and Accountancy Support

07879 475005

www.coubookkeeping.uk

kath@coubookkeeping.uk



- \* Confused by debits and credits?
- \* Swamped with paperwork?
- \* Fed up with VAT returns and other business forms?
- \* Concerned about cashflow?

*Then call us to talk to a friendly professional who can help give you back your time. And your sanity!*

Monthly, fixed-fee packages available.  
For a friendly and affordable service,  
phone now for a FREE first meeting



Practice Licence: 11809

## WILD ROSE

FLORAL DESIGN

Wild Rose Floral Design will look after your floral needs, weddings, sympathy, events, corporate or a beautiful bouquet delivered to your door, let us inspire you and take you on a floral journey.

**07894 103953**

[laura@wildrosefloraldesign.co.uk](mailto:laura@wildrosefloraldesign.co.uk)

[www.wildrosefloraldesign.co.uk](http://www.wildrosefloraldesign.co.uk)

## BURLISON Photography

MPA Photographer of the Year 2019/2020



CAA Authorised & Insured Aerial Photography & Film.  
Family portraiture at home or on location.

- Wedding Photography & Film
- Instant Event Photography • Award Ceremonies, Fun Days • Golf Days • Summer Balls
- Prom Nights • Xmas Parties • Celebrations
- Commercial • Corporate • PR • Interior
- Food & Drink • Lifestyle Photography
- Image Restoration • Bring the memories back to life

Contact Dave on  
**07771 803025**



[www.burlisonphotography.com](http://www.burlisonphotography.com)



[info@burlisonphotography.com](mailto:info@burlisonphotography.com)



## James Barnett

Quality Painting & Decorating



Advanced City & Guilds  
Over 25 Years Experience  
Tel: 01264394543  
Mobile: 07747603710

Email: [Jamesbarnett1@btinternet.com](mailto:Jamesbarnett1@btinternet.com)



## I SEE A LINE. I CROSS IT.

BESPOKE TAILORING BY [DRESS2KILL.COM](http://DRESS2KILL.COM)

£100 off your first **DRESS 2 KILL**  
Bespoke Suit



Exclusive offer for readers  
of The Hill & Valley Magazine

Dress 2 Kill now at 84 High St, Andover SP10 1NE Above At Last



**OVERTON**  
BATHROOM CENTRE LTD

[@overtonbathrooms](https://www.instagram.com/overtonbathrooms)

Telephone: 01256 770374

[email:info@overtonbathrooms.co.uk](mailto:email:info@overtonbathrooms.co.uk)

[www.overtonbathrooms.co.uk](http://www.overtonbathrooms.co.uk)

Thank you to our  
loyal customers for  
your continued support!

We provide over 30 years  
of experience and pride  
ourselves on our customer  
service, product knowledge  
and installation expertise





**THE PLOUGH** - The Plough is now just a couple of weeks away from opening to the public, three hundred years after it was first founded. It's taken months of really hard work refurbishing it and it's almost ready to open its doors. You've probably already seen the very smart new sign, which was kindly donated by Christopher and Babs Duxbury.

The pub's new manager Steve and his fiancée Lucy have already settled into the flat upstairs, with their collie dog Bailey. They moved all the way from Hull in mid-August and, once they'd unloaded their furniture, they set to work at once, helping our team of volunteers and tradespeople get the pub ready. We really hope they are going to be happy in their new Longparish home.

Steve has many years' experience in the hospitality business, most recently taking on a country pub and restaurant in the Peak District. Within a year his pub received the coveted [Traveller's Choice award from Trip Advisor](#), which reflects 'the best of the best' for service, quality and customer satisfaction.

Once the pub is up and running, Steve and Lucy will be working alongside the new chef Dean, who is already in the process of creating an exciting new menu. Dean is from Laverstoke so will know all the good, local suppliers. We are still looking for a sous chef, a catering assistant and bar staff. For more information about these posts, please email [careers@ploughinn.org](mailto:careers@ploughinn.org)

The whole team at The Plough looks forward to welcoming you into the pub very soon. Keep an eye on the website for details of our opening events. [www.ploughinn.org](http://www.ploughinn.org).



## Together Again!

Longparish Village Choir and Friends

A magical mix of joyful music and tributes celebrating our community and the wonderful spirit shown during the pandemic.

Friday 24 and Saturday 25 September  
7.30, St Nicholas Church Longparish  
By kind permission of the PCC

**FREE** entry but please reserve a seat.  
Call Cathy 07775 683452 or Susie 07880 733121  
Or collect tickets from Village Shop

Donations sought for interval refreshments



## GARDENING



### LONGPARISH GARDENING CLUB

TUESDAY, 28<sup>TH</sup> SEPTEMBER : 7pm  
Longparish Village Hall, SP11 6PB

Talk by **Andy McIndoe** - on SHRUBS : "Discover the Perfect Plant for Every Place in Your Garden"

The next meeting of The Longparish Gardening Club will be at the Longparish Village Hall, SP11 6PB and we have Andy McIndoe coming to speak to us again. Andy is a well-known and amusing speaker.

Members of the LGC free, Visitors very welcome to this meeting £5.00. Covid restrictions may limit numbers so please let us know if you are hoping to come.

Any queries please to  
Rosie Lowry  
01264720325 [rosie@yewcottagelongparish.com](mailto:rosie@yewcottagelongparish.com)  
Or Marion Bell 01264720205

### LONGPARISH WILDLIFE BY CHRIS BOWMAN

#### ROE DEER

We have four deer in the UK, the largest is the red deer, our truly native breed, followed by the fallow, roe and muntjac. Roe are strongly associated with woodland but can also be seen in the open and have increased in population.

The male (buck), female (doe) and the young (kids) - vary in colour throughout the year. In the summer they are a rusty red and winter more slate grey. Both sexes have a prominent white rump and no visible tail. Females have a small tush or tuft of hair similar to a tail at the base of the rump during winter. They have large black eyes, nose and mouth surrounded by pale white area. Males have small antlers which have three points when fully grown.



The rut or breeding season is mid July-August. Bucks become aggressive and maintain territories with one or more does. Fights between bucks can be fatal. Although mating occurs in this period the fertilised egg does not implant and grow until January. This is thought to be so they don't have young during the winter. Fetal growth is five months with kids (usually two) being born in May-June.

Their food is young saplings, agriculture crops and they have been known to come into gardens and eat the roses. Both sexes of roe deer make a dog like barking noises when startled or alarmed.



# G & R Cousins

## BUILDING SERVICES

TILING • CARPENTRY • BRICKWORK

### EXTENSIONS • RENOVATIONS



PAVING • PLASTERING • WINDOWS

### GARAGE CONVERSIONS • NEW BUILDS KITCHENS • BATHROOMS • PLUMBING • ELECTRICAL

- Established over 10 years -  
• FULLY INSURED •

For a FREE estimate call  
**01264 860115**  
or Mobile: 07831 342599



### LOCAL BUILDER SEMI-RETIRED

#### Small jobs around your Home

I have been in the building business (formerly Amport Construction Ltd) for over 40 years. Do you have jobs around your house that need doing?

Room Alterations • Garage Conversions • Plastering • Tiling  
Brickwork • Rendering • Carpentry • Garden Walls and much more

No job too small. References available  
Please contact me for a free quotation:

Ian Gaitskell

Tel: 01264 771280 Mobile: 07787 530991

Email: amportconstruction@gmail.com Web: www.amportconstruction.co.uk

Amport based



**Ryan Dickinson**  
Contract Services Ltd



**HAVE  
A HAPPY  
BOILER**  
ALL ROUND PROTECTION FROM  
**£14**  
A MONTH

Leave your central heating in our hands. No more expensive repair bills with parts and labour included in our cover. We provide yearly contracts for gas and oil boilers. Visit our website for more details.

### Monthly Boiler Service Contracts

- ✓ Have a happy boiler with all round protection
- ✓ One off annual fee or easy monthly payments
- ✓ An engineer on site within 24 hours
- ✓ Parts and labour included
- ✓ No expensive repair bills
- ✓ Annual boiler service
- ✓ Total peace of mind

Showroom Open  
Mon - Fri: 9am - 5pm

For more details  
contact us by  
telephoning  
**01256 895216** or  
visiting our  
showroom at  
**No7 London Street**  
**Whitchurch,**  
**Hampshire**  
**RG28 7LH**



Check out our website  
[www.ryandickinsonplumbing.co.uk](http://www.ryandickinsonplumbing.co.uk)



**GOLD & GREY**  
Elegant English Interiors

Interior Design  
Upholstery  
Curtains & Blinds  
Fabrics & Wallpaper

Info@GoldAndGrey.UK

Tel: 07795 247 142

WWW.GoldAndGrey.UK

### Bourne Rose Beauty Sky Cousins

We offer a professional, fully qualified and dedicated client service in a full range of beauty treatments.

- Nails Waxing • Lashes & Brows • Facials
- Fake Bake Spray Tanning • Fake Bake Body Polish

Call us to see what we can offer you  
**07786931639**



Follow Us



**Fake Bake**



## The Sensational Sixth LCA Longparish Beer Festival 2021



Saturday 9th October 7pm – 11.30pm  
Save the date! After missing last year, the Sensational Longparish Beer Festival is back for the sixth time (we hope!). We will be returning to our wonderful Village Hall and as in previous years bringing you a fine selection of real ales from our local area and beyond.  
For further details, contact Sylvia Crook [sylvia.crook@gmx.co.uk](mailto:sylvia.crook@gmx.co.uk) (0776 303428) or Andy Smith (720 034).



### The Cricketers Inn

Matt and the team would like to thank you all for your fantastic continued support. As we head into September, we will bring back our Sunday roast lunches, along with a new Autumn menu and our English cured meats and cheeseboards.

Open;

11.30am – 3pm and 6pm – 11pm Monday – Thursday

11.30am – 11pm Friday, Saturday and Sunday

Food served 12pm – 2.30pm, and 6pm – 8.30pm every day.

Don't forget takeaway, every evening 6pm – 8.30pm



### LONGPARISH CRICKET CLUB



*The summer cricket season has come to an end. Despite the dual threats of COVID and inclement weather, the club has been delighted with the progress. All three men's teams have been very successful, with a very high win ratio.*

*The Junior U11, U13 and U15 teams have all performed well, with good individual and team performances with many junior players making a significant leap to playing in the adult teams.*

*The club were delighted to recently announce ASUS as a new sponsor and the senior teams now look unstoppable in their new shirts.*



Longparish CC 1st Team

*Despite the weather variations, the ground has been brilliantly presented by Groundsman Paul Blackmore all season. It's one of the most picturesque grounds in the county. Indoor cricket will now take over activities. Although COVID restrictions prevented the official launch of the new, state of the art, practice nets, hopefully we can have a decent Christmas Bash down at The Cricketers Inn.*

*If you are interested in the joining the club or would like your children to become involved in our junior programme, please make contact through the website: [longparishcc.hitscricket.com](http://longparishcc.hitscricket.com)*

**Mark Benzing, Chairman**



## Longparish Fete



Saturday 11<sup>th</sup> September 2021

12 noon to 4pm at Longparish Cricket Field

Officially to be opened by  
Ex-Formula 1 Driver and Longparish Resident

**JONATHAN PALMER**



**SECOND HAND ROSE**



WANTED (before the fete day if at all possible!)  
Quality designer, vintage and as-new clothes,  
accessories, jewellery and gifts

Please leave at Boundary House (near the Cricketers)  
or call Cathy on 07775 683452 or Pam on 07824 486011

**No jumble please**



**TOY STALL**



If anyone has any good, clean toys I would be delighted to accept them. Jan West, Drove Cottage. I can collect. 720289.



**BOOK/CD/DVD STALL**



If you have any books, CDs and DVDs to donate to Longparish fete please phone **Jenny Jolliffe on 07471 942 496 or 01264 720207** to arrange collection.

I am happy to collect items from anywhere within the Bourne Valley any time before the fete date of 11 September 2021



**PRODUCE STALL**



If you are making jams or chutneys, or can spare any home-grown produce, please bring them along and donate them to the stall on the day. Thank you, **Sylvia Crook**

### SET UP/BREAK DOWN

Fancy a free bite to eat and a cuppa?

Fete help required on **Thursday 9th** and **Friday 10th** for: tent and teepee erecting, collection of tables/chairs, etc.

From 10:30am @ LP Cricket Field.

Thank you! LP Church and Village Fete Committee

### Counting our blessings

I have Nepali prayer flags fluttering in my garden to remind me to count my blessings. Lockdown has been hard but we are very much blessed compared with many other people.



In Nepal people have been having a hard time. The Covid infection rate is high, vaccination rate is low, the tourist industry has taken a huge hit, there's no furlough scheme and heavy monsoon rains are bringing severe flooding. I am trying to raise a bit of cash to help out. My friend Chandra explained how people in his village and the village next door are in difficulty. Imagine having to cope with a pandemic when your house has washed away.

If you have been vaccinated, then you are blessed. Please chip in a tanner. If you haven't suffered financially or have even saved during lockdown, please think about doubling it or if you live somewhere secure and dry maybe add another ten? The target is to reach £1500. Everything you give will help families with no furlough or income from tourism or with the repair of six houses washed away by floods.



St Nicholas Church in Longparish have kindly offered to collect donations, here: <https://cafdonate.cafonline.org/17464>

Thank you. **Jeremy Barber** tel 720459



### Esseborne Manor Hotel & Restaurant

Family run business offering a warm welcome and the best food in the area.

Daily lunches with canapes & wine

A la carte dinners

7-course tasting dinners

Sunday lunches

Vintage afternoon teas

Perfect for private functions & weddings

Hurstbourne Tarrant SP11 0ER,  
[www.esseborne-manor.co.uk](http://www.esseborne-manor.co.uk), 01264 736 444



### "Snowdrops"

**5\* Bed and Breakfast**  
**- a haven of tranquility in Stoke**

Beautiful gardens,  
home-made preserves  
and afternoon tea in  
the Swedish Log Cabin

Ring 01264 **738920** to book  
your accommodation or email:

[gardenend@btinternet.com](mailto:gardenend@btinternet.com)



## G&S Lark Tree Services

Andover (01264) 874 464

Amesbury (01980) 670 226

Mobile 07850 849 960



Tree Care ~ Firewood ~ Hedge cutting

[graemelark@outlook.com](mailto:graemelark@outlook.com)  
[www.larktreeservices.co.uk](http://www.larktreeservices.co.uk)

## TW GLAZING & WINDOW REPAIRS

**01264 782 211/ 077 652 60922**

[www.twglazingandwindowrepairs.com](http://www.twglazingandwindowrepairs.com)

**misted double-glazed units**  
**cat-flaps into UPVC and glass**  
**glass repairs into all existing frames**  
**hinges, handles, locks and gaskets**  
**greenhouse glass and faceputtying**  
**FREE QUOTES AND ADVICE**

**MARH**  
fuels



**01635 253253**

## AS WAITE & SON LLP

PLUMBING & HEATING ENGINEERS

- Heating Systems
- Bathroom design & installation
- Unvented pressurised systems
- Underfloor heating
- Oil boiler specialists;  
service, maintenance &  
installation

Whitchurch (01256) 893845  
Darrell Mobile: 07884 481490  
Tony Mobile: 07831 366188

## GILL RHODES WEALTH MANAGEMENT

WEALTH MANAGEMENT CONSULTANTS



## A wealth of expertise on your doorstep

We provide an experienced wealth management service  
and offer specialist advice in a wide range of areas including:

- Investment planning
- Retirement planning
- Inheritance Tax planning

For further details contact Gill Rhodes on:

**Tel: 01264 362282**

Email: [gill.rhodes@sjpp.co.uk](mailto:gill.rhodes@sjpp.co.uk)  
Website: [www.gillrhodeswm.co.uk](http://www.gillrhodeswm.co.uk)

Are you mulching  
your garden  
this year?

## Apsley Farms Mulch Soil Improver

01264 554433 -  
[www.apsleyfarms.co.uk](http://www.apsleyfarms.co.uk)

Free local delivery - From £50 per 730L bulk bag





## Fitness without instruction

The explosion of fitness during the first lockdown was one positive consequence of the pandemic. Being one of the few excuses for leaving your home, exercise was inflated to a level of social importance never seen before. Not only did it allow you an hour to leave your consensual house arrest but it is now considered to be, by the Government no less, an essential part of life.

Jo Wicks' free morning classes had adults exercising for the first time in years establishing within the nation that exercise is now an important family activity. Both this and the global shift of virtually all fitness classes, from the studio to Zoom, awakened the uninitiated to the possibilities of online fitness at home; live or pre-recorded.

Being a Pilates instructor myself, I could not be happier. My main goal is to impart knowledge to enable people to be more mindful of the way they move and ultimately change how they move their bodies every day, not just in my classes. So, to bring fitness, on tap, into everyone's home could only be good, right?

The answer to that question is 'yes', however, there is a 'but'. Exercise without professional instruction can only get you so far and may cause injury. A series of well-produced fitness classes on YouTube will increase your health and wellbeing but may not be right for your body. Even if the exercises are the right type and level, form is still important, meaning you can do exercises incorrectly, and there are many exercises that if performed incorrectly will lead to injury. Some of my fellow instructors, due to the limitations of technology, have chosen to deliver their online classes in a pre-recorded format by doing all the exercises themselves and only glancing at the screen to check everyone is following rather than to give personal instruction. These classes are still better because your instructor knows your body but they are not proper instruction.

This said, I do wish for home exercise to continue and I wish more families would embrace it as part of family life. We begin de-conditioning our bodies from the day we start school when we are introduced to our body's lifelong restraint, the chair. Now we have an additional shackle, the handheld device. So, anything that gets you out of your chair and away from your phone is good for you. But beware, a lifetime of sitting and hunching is a complex physical state to recover from.



Keep doing the things that make you happy but if you are serious about getting fit, you may need a little professional help with some proper instruction.

Chloe is rebooting her classes in Longparish Village Hall in September. Contact her here: [chloe@keepmovingpilates.co.uk](mailto:chloe@keepmovingpilates.co.uk)

## Eric Aldridge



Eric was born in Sussex on 3<sup>rd</sup> March 1929. His father was a game keeper and the family moved to Hampshire when Eric was a small boy. Eric enjoyed going out with his father setting traps and helping with what small jobs his father gave him.

After national service, he successfully applied to SCATS for work as a delivery driver, which is where he worked for many years delivering and collecting grains in the Southern Counties and beyond into London docks, and where he met his wife, Doris. It was love at first sight, he often told us. They lived, first in a Nissan hut in the woods along the Salisbury Road with no central heating, no insulation- they lived happily under those conditions for a number of years until a more modern flat became available, eventually moving to their bungalow in North Acre. Eric always said there is no better place in the world to live in than Longparish.

Doris died in 2005 and Eric never really recovered from her loss. However, the North Acre Community enveloped him and introduced him to all sorts of clubs, such as the Recycled Teenagers, the church, coffee mornings and afternoon tea at the vicarage.

In 2007 the Storey family moved in next door to Eric and a firm and lasting friendship ensued. In 2016 Eric was diagnosed with dementia. Throughout his illness he remained kind and grateful for being able to remain in his cherished home, supported and cared for by Pam and Simon.

He often said he had no regrets in life apart from being unable to have children, he had been born lucky and it is better to be born lucky than to be rich. He died peacefully at home and happy on 21<sup>st</sup> May 2021.

## Hampshire & the Islands Historic Churches Trust

### Ride and Stride

11th September 2021

between 10 am and 6 pm

The Hampshire & the Islands Historic Churches Trust is a non-denominational charity which raises funds towards the upkeep of some 900 historic church buildings dating from the 8th to the 20th century.

The annual sponsored Ride and Stride day is being held on Saturday 11<sup>th</sup> September. People of all ages, whole families or groups are invited to cycle, run or walk to visit churches in Hampshire and the Isle of Wight and raise money for HIHCT and for their local church; half of the sponsorship money from participants in Longparish will go directly to St Nicholas, which will be open and providing refreshments for visiting cyclists and walkers.

If you would like to participate, please contact Jane Young (01264 720233 or [j.young233@btinternet.com](mailto:j.young233@btinternet.com)) for a pack containing a list of churches, stickers and sponsorship forms.



## CLACY'S GARAGE

London Street, Whitchurch  
01256 892099 or 892168  
Email [wayne.clacys@hotmail.co.uk](mailto:wayne.clacys@hotmail.co.uk)  
Service and Repairs to All Cars  
& Light Commercials

Both Diesel and Petrol  
Welding and Bodywork



**BREAKDOWN &  
ACCIDENT  
RECOVERY  
CAR HIRE AND LOAN**

Cars & Light Commercials & Motorbikes -  
Diesels, Petrol & Catalysts Tested

## Matt Townsend Landscaping and Fencing Call 07825710750

*Over 15 years' experience  
Fully Qualified and Insured*

[www.matttownsendlandscapingandfencing.com](http://www.matttownsendlandscapingandfencing.com)

Landscaping  
Fencing  
Patios  
Turving  
Decking  
Concrete Bases

## BARSU GrassWorks

### Garden Maintenance

Grass Cutting  
Lawn Treatment  
Small Hedge Cutting

For Competitive Rates call

**Barry**

☎ **01264 393803**

**Mobile: 07876 178865**

or email:

**[barsu79@ntlworld.com](mailto:barsu79@ntlworld.com)**



**MOSAÏQUE**  
EASTFIELD HOUSE

BOOK ONLINE NOW, visit:  
[www.mosaïquebeauty.com](http://www.mosaïquebeauty.com)



## Relax in beautiful Longparish!

### Mosaïque Beauty & Image

Eastfield House,  
Forton, Longparish  
SP11 6NN

T: 01264 720 797

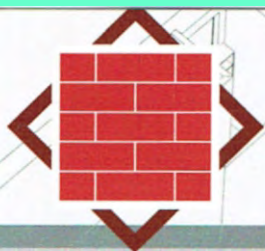
M: 07785 268 186

E: [bp@mosaïquebeauty.com](mailto:bp@mosaïquebeauty.com)

W: [www.mosaïquebeauty.com](http://www.mosaïquebeauty.com)

### Treatments Include:

- Organic & Specialist Facials
- Eye treatments
- Manicure & Pedicure
- Gel Polish
- Lycon Gentle Precision Waxing
- Spa Treatments & Lava Shells
- The Dorn Method
- Jane Iredale Mineral Make-up
- Colour & Style Analysis



## Hayward Brick and Flint

Restoration, Alterations, New build

**Adrian Hayward**  
Bricklaying And Flintwork Contractor

Groundworks, Fencing,  
Patios, Chimney Rebuild  
Landscaping, Drives  
Drainage, Damp proofing,

10 Hirst Copse  
St Mary Bourne  
Andover  
SP11 6ST

**tel 07833691542**  
[jinxzoolander@hotmail.co.uk](mailto:jinxzoolander@hotmail.co.uk)



RIBA  
Chartered Practice

**MATHEWSON WATERS ARCHITECTS**

WHITCHURCH 07540 726562 [www.mw-architects.co.uk](http://www.mw-architects.co.uk)





## WEATHER – JUNE AND JULY 2021

	June	July
Total rainfall for month	92mm (3.62in)	96mm (3.78in)
It rained on	7 days	13 days
Rainfall same month last year	66mm (2.59)	59mm (2.32in)
Total for 2021	520mm (20.47in)	612mm (24.25in)
Total for 2020	526mm (20.70in)	593mm (23.30in)
Max temp	32C (90F) on 14 <sup>th</sup> June	36C (96F) on 21 <sup>st</sup> July
Min temp	7C (44F) on 4 <sup>th</sup> June	12C (54F) on 4 <sup>th</sup> July

At the end of June, the rainfall was the same as last year....we felt we could do with a dry (and warm) spell!

We had the warm spell in July ... now we want another one!

The hottest temperature in the South was Heathrow on 21<sup>st</sup> July at 33C. We managed to beat that this time with 36C = 96F ....warm.

Last year Heathrow recorded 37.8C - we must do better!

*John Smail*

## LADIES' COFFEE MORNINGS

The September coffee morning will be hosted by Barbara Carrodus and Denise Bradley on Thursday, 23<sup>rd</sup> at the Cricket Pavilion from 10.15 am. All ages are welcome!



For more information, or if you would like to host a coffee morning, please contact Susie Sorby (tel. 892665 or sbsorby@hotmail.com)

## THE WIMPY CYCLIST IS OFF TO PARIS



Elsewhere on these pages you can read about our Wimpy Cyclist – Simon Mattison, and his preparations to cycle 300 miles to Paris at the beginning of September. Simon is raising funds for the British Legion. If you would like to sponsor Simon, please visit his online JustGiving page: mattisonsp2pforRBL Good Luck Simon!

## MIDSUMMER CELEBRATION AND CHARITY AUCTION – 11 September

Tickets still available, please contact:  
Ann Orr, Denise Bradley, Lulu Beasley and Emma Ryan  
Email: [MidsummerCelebrationHBP@gmail.com](mailto:MidsummerCelebrationHBP@gmail.com)



## PARISH COUNCIL MEETING

The Parish Council are very pleased to announce that meetings will, once again, be taking place in the Village Hall after a year of Zooming.

The next meeting is on Wednesday 29<sup>th</sup> September at 7pm. All residents of Hurstbourne Priors are welcome to attend and do not need to let the Clerk know beforehand. However, if there is something particular you would like to discuss it might be helpful to let him know so that it can be added to the Agenda. The Clerk, Richard Waterman, can be contacted on [Richard.waterman150@btinternet.com](mailto:Richard.waterman150@btinternet.com) or on 01264 772460.

All copies of the minutes of previous meetings are on the village website.

*Clare Read  
Chairman*





# GroundLord

THE PROFESSIONAL  
ARBORISTS YOU CAN TRUST

TREE SURGERY | SITE CLEARANCE  
ECOLOGY WORKS | FORESTRY

01256 212908  
www.groundlord.com



# TUCKER

Kitchens, Furniture & Joinery

Est: 1976

Unit 9 Towergate Industrial Park  
Colebrook Way, Andover, Hants, SP10 3BB  
t: 01264 365113 www.tuckerjoinery.co.uk



# SW WINDOWS

Window Cleaning



Interior & exterior windows  
Gutters, fascias & soffits  
Conservatory roofs  
Solar panels  
Cladding

07968 524874  
swwindowstrm@gmail.com

# CLEAN OVENS

DOMESTICS LTD

• AGAS • HOBS • OVENS • RANGES  
• EXTRACTORS • BBQS • MICROWAVES

Eco-friendly materials used - Experienced staff  
Covering Hampshire & Wiltshire

Call or email Dave  
tel: 0800 707 6629 mob: 07563 693145  
email: [cleanovensdomestic@gmail.com](mailto:cleanovensdomestic@gmail.com)

# M.J. SLY

MONUMENTAL SCULPTOR

Andover Memorial Studio  
6 Swan Court,  
Andover, Hampshire.  
SP10 1EZ  
Open by appointment only

QUALITY MEMORIALS AT  
WORKSHOP PRICES FREE  
BROCHURE

Choose a NAMM Member  
[www.mjsly.co.uk](http://www.mjsly.co.uk)

email: [info@mjsly.co.uk](mailto:info@mjsly.co.uk)

Telephone 01672 516797  
Pelham Court, Malborough



Mobile knife, scissor & tool sharpening services

No call out charge

Call Becky on **07393 600630** to book a visit  
More details can be found on

[www.onpoint-sharpening.co.uk](http://www.onpoint-sharpening.co.uk)

To Advertise in this Magazine contact: Mr Michael Widén 01264 738250



## WHITCHURCH SILK MILL

**Threads in Sheds**

'Threads in Sheds' is the latest special exhibition at Whitchurch Silk Mill. Opening on Saturday 11<sup>th</sup> September, it features contemporary tapestry pieces created by members of the British Tapestry Group. Thirty-six members from across the country and even internationally have created new tapestries inspired by the heritage and traditions of weaving, showing contemporary innovative and three-dimensional techniques at their best; some on display for the first time.

Whitchurch Silk Mill, a working museum, is the oldest working silk mill in the UK, and its living weaving silk heritage inspired these artists. Imagination, creativity, skill and patience are evident in the designs, and have created an exhibition to excite the senses and celebrate this evolving art form.

The exhibition will showcase the work of renowned tapestry weavers Joan Baxter and William Jefferies and silk weavers from the Mill.

Lisa Gale, Visitor Experience Manager at the Mill, says "We are incredibly privileged to premier this collection of works celebrating the art of textiles in all its brilliance. Visitors will discover ingenious techniques, colour harmony and the narratives of imagery to inspire them. As each artist has approached the topic 'Threads in Sheds' in a different way, there is something for everyone to enjoy."

Joan Baxter, one of the world's foremost tapestry artists, says "Our task, as tapestry weavers, has been to navigate through the numerous forms of yarn that silk comes in, to celebrate the wonders of its dyed colours and to try not to get immured in fine yarns that tempt us to impossibly detailed weaving."

William Jefferies, a tapestry weaver whose work is featured in many national collections, says "All sense of the industrial mills ('Sheds') has been bypassed by the individual weavers who have quietly worked through this last year of modern pandemic. It is a celebration of these weavers' vision and skill and a fitting reward to be included as part of this exhibition in such an appropriate place."

The exhibition is free with Mill admission and runs until Sunday, 21 November 2021. The Mill is open Tuesday to Sunday 10.30 am to 5.00 pm.

**Bridge Afternoon**

In 2022 we are relaunching our student work placements, and will be offering three textiles students the opportunity to experience the craft of silk weaving in our unique heritage environment. These placements have become popular and we receive applications from all over the UK. Successful students are awarded a bursary

of £400 to cover their living expenses during their time with us. Please help us raise £1200 for three 2022 bursaries by taking part in our bridge afternoon:

- £15 per person
- Afternoon tea, prizes and raffle
- Bring your own bridge table and playing cards or iPads
- Booking deadline Monday 1 November 2021

For more information, contact

laney.thorpe@whitchurchsilkmill.org.uk

**New Loyalty Card Scheme**

The Mill is offering a new loyalty card scheme. Collect your free card from the Mill gift shop, spend £10 or more in the shop on five occasions, getting your card stamped each time, and receive 20% on your next purchase (excludes Mill admission and café purchases).

**Water Voles Return to the Mill's Riverbanks**

Protection of the riverbanks between the Silk Mill and Fulling Mill (downstream) and our recent habitat and ecological improvements have resulted in the return of water voles to our stretch of the Test. The voles seem to approve of our softening of the riverbanks with some marginal planting, removal of tree branches over-shadowing the riverbed and improved cutting and clearing of weed in the river, as they are now living in our riverbanks.

**Silk Mill Food Festival**

This event, on Saturday 18 September in the grounds of the Mill, is open for FREE as part of the Heritage Open Days scheme. Visitors will be spoiled by the selection of suppliers tempting them with delicious delights and tasty treats. See our social media posts or our website for firm details nearer the time.

**Pins & Needles September**

Join us on 3 September between 2pm and 4pm for the next in our regular adult crafting sessions, to learn a new skill or just to enjoy the company of some like-minded crafters. Tickets at £10 include tuition, all materials and a hot drink from the café. Places are limited, so book as soon as you can.

Contact: [info@whitchurchsilkmill.org.uk](mailto:info@whitchurchsilkmill.org.uk) – 01256 892065 – [www.whitchurchsilkmill.org.uk](http://www.whitchurchsilkmill.org.uk)







**T C SCOTT**  
ST MARY BOURNE  
GARAGE LTD

**MOT** Test Station

Repairs & Servicing of all  
makes of vehicle.

Diagnostics

Welding to MOT standard

**Phone (01264) 738606**

## Bourne Valley PYO

We grow seasonal fruit and  
vegetables in the heart of the  
Bourne Valley

For a great day out with the  
family, come and see us.

**Contact – 01264 738 888**

[www.bournevalleypyo.co.uk](http://www.bournevalleypyo.co.uk)



**COLLARD**

**DEMOLISH | DISPOSE | RECYCLE**

Having a house clearance or work done?



**Skip the tip and hire a skip!**

Book your skip hire online with  
friendly next day service!

[www.rcollard.com](http://www.rcollard.com)

**01264 720 257**

**ETHERINGTON**  
CONTRACTING LTD



**01256 893150 / 07901 771080**  
[www.gecontracting.co.uk](http://www.gecontracting.co.uk)

**LANDSCAPING • GROUNDWORK • PLANT HIRE**

## How to contact your Member of Parliament Kit Malthouse

@ [kit.malthouse.mp@parliament.uk](mailto:kit.malthouse.mp@parliament.uk)

01264 401401

Or write to me at my constituency office:

✉ 2 Church Close, Andover, SP10 1DP

*I hold regular surgeries  
for all constituents in  
North West Hampshire*



**we show you the way**

It can be difficult to be confident about what your financial future looks like. Kingsley Financial offers different options to help you find your way:

- 1 Financial Planning Service: a detailed review of where you are & the plan to follow.
- 2 Financial Health Check: figure out what retirement will look like
- 3 Financial Advice Transaction: put in place an arrangement to meet a need
- 4 Financial Ideas Discussion: find out what the jargon really means to you

## CHARTERED FINANCIAL ADVICE

**impartial, personal, independent**



[www.kingsleyfinancial.co.uk](http://www.kingsleyfinancial.co.uk)

✉ [enquiries@kingsleyfinancial.co.uk](mailto:enquiries@kingsleyfinancial.co.uk)

☎ 01256 896203



**Peter A Sudlow**  
Chartered Wealth Manager  
CFP™ Dip PFS Chartered MCS1



**Eamon Keelan**  
Director & Chartered Financial Planner  
APFS CFP™ Chartered MCS1



**SOLLA**  
Society of Life  
Associates



**The Personal  
Finance Society**

Kingsley Financial Management Ltd is authorised and regulated by the Financial Conduct Authority



## DIARY OF A WIMPY CYCLIST

*Dulce et Decorum Est*

Bent double like old beggars under sacks, 160 of us will be setting off for France at amber sunrise on Thursday 2<sup>nd</sup> September. To cyclists ardent for some desperate glory, whatever hardship we go through over the 300 miles to

Paris, it will be nothing compared to the desperate situations faced by our Tommys in the trenches way back when.

It is 100 years since the Royal British Legion was created. The opportunity has arrived to raise funds for remembering the fallen and supporting the living, and I once again appeal to the readership of the Hill & Valley for your stalwart and generous support - please search for my online JustGiving page here: "mattisonsp2pforrbl" (Mattisons P2P for RBL). I am at 60% of my giving target, and need your help to spur me on to the Arc de Triomphe.

Training for the event has meant cycling longer and longer distances, and getting used to getting up in the morning and doing another day in the saddle. To replicate the distances to Paris, last week I cycled a route for 60 miles (100km) every day for 3 days in a row, followed by a 4<sup>th</sup> day at 40k to flush out the legs(!). Suffice to say I achieved this then needed to recover from a bruised backside!

I also recently completed the Sam's Ride (annual ride for Salisbury Samaritans) in the soaking wet rain and cycled my furthest ever distance – 102 miles in one day. It took an epic number of jelly babies, bananas and a slog up Pewsey Hill. Sam's ride in 2018 is where I first restarted my road cycling and first heard about the Pedal to Paris – an aspiration and a crazy-sounding distance for someone who could barely knock together 20 miles. I have lost weight, my concentration and determination has improved and I am fitter for it all. Wish me luck!

*Simon Mattison*



**EARLY EVENING PIANO RECITAL  
ST ANDREW'S CHURCH HURSTBOURNE  
PRIORS  
SATURDAY, 9<sup>th</sup> OCTOBER  
At 6.30pm**

by popular request  
Pianist

**CHRISTOPHER BURROWS**

returns to play a  
Selection of Music by  
Rachmaninoff, Chopin, Beethoven and other composers

**Tickets £12.50**  
(to include interval wine)

Available from:

Mandy Briant-Evans,;  
[a.briantevans@gmail.com](mailto:a.briantevans@gmail.com) 01264 738489

Barbara Carrodus  
[barbara.carrodus@btinternet.com](mailto:barbara.carrodus@btinternet.com) 01256 893473



**Save the date:** The Wondering Fiddlers – concert in St Andrews Church on Saturday, 20<sup>th</sup> November. More details in next month's Hill & Valley.

**HARVEST CELEBRATIONS**

**St Andrew's Harvest Festival will be held on Sunday,  
3<sup>rd</sup> October at 11am.**

All are welcome and we will have a special activity for children during the service.

As usual, we are collecting non-perishable food items for the Andover Food Bank. The Food Bank provides boxes containing sufficient nutrition for at least three days work of healthy, balanced meals for individuals and families. Suitable items include cereal, tea, coffee, sugar, pasta, rice, tinned foods, (meat, fish, fruit and vegetables) fruit juice and longlife milk.

Please bring your donations to the service or leave them in the church beforehand.

Followed by **Harvest Lunch in the Village Hall at  
12.30pm**

Tickets for lunch are £5 for adults and £2.50 for children (under 5s free). Available from Fenella Williams (01256 892081). There will be a quiz and a raffle and all proceeds will be donated to the Mityana Trust.







### SHOTGUN CARTRIDGES

- Rio
- Gamebore
- Clay Pigeons
- Traps

### FIREWOOD

- Seasoned Logs
- Free delivery 10 miles of RG28 7QA

Danegrove Trading, Lower Woodcott Farm, RG28 7QA

**Tel: 01635 250518**

Email: [pamela.nicholson@danegrove.com](mailto:pamela.nicholson@danegrove.com)



The Oak Tree  
Nursery School

Rural nursery in Whitchurch for  
children 3 m to 5 yrs, including:

- Forest school
- French lessons
- Healthy home-cooking
- Graduate-led curriculum

[www.theoaktreenursery.com](http://www.theoaktreenursery.com)

**Tel: 01256 895577**

## *Doug Hopkins ~ Joinery ~*

Purpose made joinery and  
cabinet making to your  
specifications

Tel: 01264 736 705  
(Stoke)

Mob: 07857 692 445



## Jason Cousins Hair Salon

Come and visit our award  
winning Salon for a free  
consultation and excellent  
customer service.

10c Colenzo Drive  
Andover Hampshire  
SP10 1JS

Follow Us 

[www.jasoncousinshairsalon.co.uk](http://www.jasoncousinshairsalon.co.uk) 01264 356011

PAUL MITCHELL

TANGLE  
TEEZER

ghd

AFFINAGE



## HOME ELECTRIC SOLUTIONS

Professional Domestic Electrician

Reliable Professional Affordable

### For all your electrical needs

From plug sockets and light fittings to complete rewires  
and everything in between

No job is too big or too small so please get in touch.

tel: 07816900083

email: [info@homeelectricsolutions.co.uk](mailto:info@homeelectricsolutions.co.uk)

[www.homeelectricsolutions.co.uk](http://www.homeelectricsolutions.co.uk)



**Trust  
in Godwins to  
deliver**

**GODWINS  
SOLICITORS LLP**

12 St Thomas Street, Winchester, Hampshire SO23 9HF  
01962 841484 | [info@godwins-law.co.uk](mailto:info@godwins-law.co.uk)  
[godwins-law.co.uk](http://godwins-law.co.uk)



## Yew Cottage Bed & Breakfast



Rosie and Martin Lowry

*Cosy 17th Century  
Cottage accommodation*

*With Annex  
in a beautiful village  
on the River Test*

*Longparish, Andover,  
Hampshire Sp11 6QE*

**Telephone 01264 720325**

[www.yewcottageandover.com](http://www.yewcottageandover.com)



## MAY FAIR ON LINE PRESERVES STALL



The Preserves is offering Marmalades, Jams and Chutneys at £3.50 per jar.

It's never too early to start thinking about Christmas gifts and stocking fillers...

To check current availability, please contact:

[josephine.hutchinson@btinternet.com](mailto:josephine.hutchinson@btinternet.com)

All proceeds from the sale of preserves to the Hurstbourne Priors May Fair which raises funds for our village amenities.

*Thank you for your support  
Josephine and Denise*

## WORD OF THE MONTH

This month's word is SUSURRATION meaning whispering, murmuring or rustling.

"Hark to the susurrations of the river even after the autumnal abscission silences the riparian psithurism."

Sorry that is more than one word!!!! Got carried away.

*Barbara Carrodus*



*Photo: Ian Bradley*

## ANDOVER FOODBANK

Thank you for your continued and generous support which is, as always, greatly appreciated.

## SHOE BOXES

Please could you start saving any spare **shoe boxes** that you may have accumulated from your "back to school" or summer sales shopping!! They will be used for our Christmas gift boxes. Thank you.

This week, we are in need of the following items:-

## Food Items:

Long Life Milk  
Life Fruit Juice  
Tinned fish

## Non-Food Items:

Small Laundry Detergent Long (Urgent)  
Deodorant

Thank you.

*Jenny Lelean*

**Andover Foodbank**

Tel: 01264 362111 [www.andover.foodbank.org.uk](http://www.andover.foodbank.org.uk)

TALES FROM THE RIVERBANK:  
SUE AND TONY'S STORY - PART ONE

Back in 2005, we were living the city life in London. Inspired by Tony's academic background in horticulture, and an avid interest in Hugh Fearnley-Whittingstall, we decided to move back to the countryside. We were delighted to find our own 'river cottage' in a village on the Upper Test.

In addition to the cottage, our new home had 3.5 acres of land close to the stream which had been used for ponies. We starting out with animals of our own: a calf, two cows, and a handful of sheep. Over time this grew until we were grazing other people's fields, and in 2013 we bought another eight acres, including a section of riverbank, though sadly not the fishing rights!

Our love of the land, the chalk stream, and the wildlife surrounding us continued to grow, but this was coupled with increasing concern for their wellbeing. A solar installation felt like a good way to earn an income for retirement and do something positive for the environment, so in 2015 we re-mortgaged and put in a planning application for two acres of panels.

Our local village gave us fantastic support, and overcoming many hurdles we eventually connected to the grid in 2016. The panels generate enough energy to serve approximately 80 houses while still allowing for grazing, although around this time we stopped livestock farming as Tony's parents were unwell. We downsized to just six pet sheep, which we call 'the freeloaders'!

Once the solar panels were installed, we were excited to find that they were an ideal habitat for lizards and grass snakes. We had seen house martins and swallows too, but realised that our land had little in the way of encouragement for wildlife. During his career Tony had been involved in the creation of the Itchen Valley Country Park, and this gave us inspiration for what might be possible on our own little patch.

The area next to the stream became the focal point for our changes. Digging out a dry ditch allowed it to fill with water, drawing damselflies, dragonflies, and amphibians. The permission for our solar panels required us to add screening for our neighbours, but we went further by planting trees and extending the hedging. In the winter we feed seed along these hedges, to help keep our birds and voles going in the cold.



**Want to support your local stream? Get involved:**  
[www.hiwwt.org.uk/winterbournes](http://www.hiwwt.org.uk/winterbournes)



## MARCH HOUSE

Web Design  
Logo Development  
Digital Marketing  
Digital Publishing  
Branding  
HNW Tech Tutoring

[lizzie@marchhouse.co.uk](mailto:lizzie@marchhouse.co.uk)  
[www.marchhouse.co.uk](http://www.marchhouse.co.uk)  
0777 622 4985



## DIRTYDOGGIES & HAIRYHORSES

Established in 1987

Highly experienced horse groom & dog beautician offering a friendly, mobile grooming service. Have your dog bathed, clipped, trimmed or hand stripped in your own home. Nail clipping. Small-to-medium sized dogs only. Clipping, trimming, mane and tail pulling for horses and ponies. Plaiting for competitions, etc. Please contact Christine Allen  
**07890 520684**



## Andover Carpet Cleaning Co.

Carpets, Rugs, Suites,  
Sofas, Recliners etc.

Scotchguard &  
Deodorise Treatment

Call 01264 334636  
Mobile  
07850 677 761

## The Shearing Shed Dog Grooming

Rachel Brown  
07460832214

4 Grenage Cottages  
Litchfield RG28 7PT



[theshearingshed1@gmail.com](mailto:theshearingshed1@gmail.com)



## TREE AND GARDEN SERVICES

Contact Drew

01256 893566 ~ 07720 842451

[monkeybusiness77@hotmail.co.uk](mailto:monkeybusiness77@hotmail.co.uk)

NCHARB ~ Fully Insured ~ Free estimates and advice

## QUALITY PRIVATE DENTISTRY

**GD** Gwynne  
Dental



Complete Dental Care



Cosmetic Dentistry



24/7 access to your  
dentist for advice  
and emergencies



Children's Dentistry



[info@gwynnedental.co.uk](mailto:info@gwynnedental.co.uk)



[www.gwynnedental.co.uk](http://www.gwynnedental.co.uk)



01256 321 945



## HEATSOURCE BOILERS LTD

All makes of oil and gas boiler  
servicing, repair and replacement.

**07952 671669 / 01962 761339**

## TAYLOR & KERBY

ANTIQUE CLOCK REPAIRS



With a combined 35 years in the craft, Taylor & Kerby are specialists with an enthusiasm for sympathetic repairs and thorough servicing of almost any mechanical clock.

Based in Weyhill near Andover, we cover all surrounding areas of Hampshire, Wiltshire and Berkshire within a 25-mile radius for collection and delivery.

[www.taylorandkerby.co.uk](http://www.taylorandkerby.co.uk)  
Unit 5, The Fairground Craft Centre, Weyhill,  
HANTS, SP11 0QN  
01264 772230

## Frenches Farm livery

- Beautiful livery on working farm
- Spaces available for DIY, competition, full and part livery
- Access to all facilities including indoor and outdoor arena, lunge pen and jumping field
- Stunning off road farm hacking routes and local bridal ways
- Well - kept summer and winter paddocks for daily turn out

Frenches Farm Livery

Facebook: Frenches Farm Livery

Website: [www.frenchesfarmlivery-andover.co.uk](http://www.frenchesfarmlivery-andover.co.uk)

Email: [anna.frenchesfarm@gmail.com](mailto:anna.frenchesfarm@gmail.com)

Find us in **Little London, Andover, SP11 6JG**

Please email for more information



## Aardvark

PROFESSIONAL OVEN AND CARPET CLEANING SERVICES

AARDVARKOVENCLEANING.COM • AARDVARKCARPET-CLEANING.COM

**07783 810806**



## Charlie rows for bronze at the Olympics

Charlie Elwes of Stoke represented GB in the Men's eight at the Olympics. A huge congratulations to Charlie and his team.

*"It was incredible to represent my country (and the Bourne Valley!) at the 2020 Tokyo Olympics. To come away with an Olympic medal was so special, and the support from friends, family and everyone in the village has been amazing. I look forward to showing everyone the medal."*

Charlie Elwes



## Ride and Stride

**11<sup>th</sup> September 2021 - 10am to 6pm**

This annual event raises money for the Hampshire & the Islands Historic Churches Trust, a non-denominational trust.

The funds are then used for grants to help with the maintenance of historic churches. The Trust has been contributing towards many projects since 1988.

**The idea is for as many people as possible to either bicycle or walk to as many different churches as they can on that Saturday, being sponsored for the number they visit.**

A fun thing to do. Choose your churches, plan your route and go as family, or group of friends or on your own. The money you raise will be split between our own St Peter's Church and the Trust.

For further information on the churches open (some may supply refreshments), sponsorship forms, stickers and general information contact **Eve Lind-Smith** on ☎ 01264 738 681. Good luck! Have a Great Day!

*If you would like to join Eve walking from Woodcott to Longparish, you are very welcome! Give her a ring.*

### NEW TO THE PARISH?

**WELCOME DRINKS FOR NEW VILLAGERS on Friday 1st October 2021 - 6.30pm**

**St Mary Bourne Village Centre**

All new residents are warmly invited to a drinks reception to welcome them 'officially' to the parish\*. The relaxed evening gives newcomers an opportunity to meet other new residents and to find out more about the villages and parish by chatting to representatives of different local organisations and clubs.

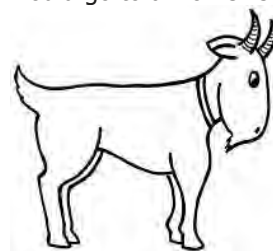
Anyone who has moved in since November 2018 is very welcome to attend. Personal invitations will be sent out nearer the date but if, by mischance, you don't receive one, please do feel free to come along and introduce yourself on the evening. We'd love to see you!

For acceptances and more information, email [welcome@stmarybourne.org](mailto:welcome@stmarybourne.org) or see <https://stmarybourne.org/new-residents/>

\* anyone in Binley, Dunley, Egbury, St Mary Bourne, Stoke, Wadwick, Woodcott and The Wykes

### Mityana Women's project update

Over the course of the last nine to twelve months or so the 'Sales Shelf' outside Little Brook House offered anything from garden plants and flowers to unwanted household and shed items and then bird boxes and bug hotels. People offered donations for what they took away. All the proceeds would go to a women's project in Mityana.



We buy 10 goats; 9 nannies and one billy, and women are selected from a small community to receive the nanny goats and the priest has the billy! During the early stages of receivership, the women are taught how to look after and maintain a good health programme for their goat. Each new project costs a little under £600 and the billy goat is replaced twice with a small emergency pot and the women have to undertake a commitment to give one kid back to the programme so that another woman can be selected to own a goat. Our pilot scheme began in 2019 and has now had 11 kids born (one set of twins) and all have survived to date.

Amazingly the 'Sales Shelf' has raised £827.24 so far! Thank you so much to everyone who donated. We are aiming for £1000, some of which will go towards the 2022 Goats project. We have twelve village communities which we support. Five of them now have these income generating schemes and by 2022 we hope to have seven up and running.

Thank you to everyone for their help – I had no idea how successful this would be. I will let you know when we hit our target. The Sales Shelf when it starts again will be from The Old Forge.

Dodie Marsden



### Coffee at The George Inn

All ages are welcome, from all the villages, to a social coffee morning at **The George Inn St Mary Bourne on Tuesday 14<sup>th</sup> September at 10.30am**

£2.50 for coffee and biscuits - For more information contact Win Coventry - ☎ 01264 738 199.



## 'The Film' at St Mary Bourne Village Centre is back from September



PG-13 | 1 h 52 min

Inspired by global phenomenon of military wives choirs, the story celebrates a band of misfit women who form a choir on a military base. As unexpected bonds of friendship flourish, music and laughter transform their lives, helping each other to overcome their fears for loved ones in combat.

**Tuesday 21<sup>st</sup> September - 7.30pm**

**Hall and Licensed Bar open from 7pm**

Tickets **£5** in advance or **£6** at the door

Please reserve tickets in advance by email

[smbvillagecentre@btinternet.com](mailto:smbvillagecentre@btinternet.com)

[www.stmarybourne.co.uk](http://www.stmarybourne.co.uk)

**19<sup>th</sup> October - 'Nomadland'**

**16<sup>th</sup> November - 'Summerland'**

## An Evening of Music

St Peter's Church, St Mary Bourne  
**Friday 24<sup>th</sup> September 2021 at 7pm**

### The Amberley Ensemble

An evening concert with well-known local musicians  
Harriet & Nigel Dickinson and others

Music to include *Sextet* by Theodor Blumer - Elgar -  
*Saint Saëns - Laudate Dominum* by Mozart

**All tickets £8 - to book ☎ 01264 738 206**

**60 minutes of wonderful music not to be missed**

**followed by Refreshments**

*Proceeds to St Peter's Church*



**The Community Library - Club Room**  
*Saturday mornings between 10.30 and 12.30*

## SMB ST MARY BOURNE VILLAGE SHOP & post office



Please join us on

**Sunday 26<sup>th</sup> September, 2021**

**in the Village Centre**

**Anytime between 3pm and 8pm**

For drinks and nibbles

**To celebrate the shop turning**



**20!**



**Happy Birthday to us! Happy Birthday to us!  
Happy Birthday, dear St Mary Bourne Village  
Shop and Post Office... Happy Birthday to us!**

The Committee, Staff and Volunteers of St Mary Bourne Village Shop are very proud to announce that on 3<sup>rd</sup> September the shop turns

**20!**

### (If I could make that flash and give off fireworks, it would.)

That's right folks! 20... Two-O.... Twenty! That's amazing, isn't it! In a 20-year span when the age of the Supermarket really soared and when internet shopping took over, it is quite incredible that a little shop in the heart of a Hampshire village has remained stoic.

Don't get us wrong – there have been some very rocky times... and we mean rocky! The shop has been on death's door on more than one occasion and would have crossed the threshold but for the tenacity of fantastic members of our community who have stepped in, rolled their sleeves up and pulled the shop back from the brink. These amazing people have been Committee members, generous donors or plain hard workers who have saved the day.

And here we are. Twenty years later (yes! Twenty!). Dusting ourselves off after an incredibly strange and hard 18 months but coming out the other side, not only a survivor of the pandemic but thriving. This was our time to show what a community shop is all about and we stepped up to the plate - home deliveries; donating gifts for goody bags to go to those who needed a lift and just being open throughout. We are very proud of the service we gave and continue to give.

It's good to be back to normal and with the introduction of Vicky Pettit and Julia Peart to the staff team there is a strong heart beating away in the shop. We have a great team with plenty of laughter and fun and we are pleased to say that we fully intend to be careful custodians of this fantastic village asset so that it can celebrate another 20 years of serving its community.

Keep your eyes open for little celebrations all throughout the month of September. The biggest of which is our **Village Drinks Party** held in the Village Hall on **Sunday 26<sup>th</sup> September** between 3pm and 8pm... come and go as you please – it would be lovely to see you!

Thank you to everyone who has contributed to the Village Shop over the last 20 years, whether they be customers, volunteers, committee or staff. **We salute you!**



**July 2021 - 1☺☺ Club Draw:****£50** - Rosie Case    **£20** - Andrew Woodhouse**£20** - Hugo Wurzer    **£10** - Leslie Smith**August 2021 - 1☺☺ Club Draw:****£50** - M & V Kennett    **£20** - O Woodhouse**£20** - D & Blake    **£10** - D & A Blake

## Parish Council

**Dates for Full Parish Council Meetings**• **Tuesday 21<sup>st</sup> September**• Tuesday 19<sup>th</sup> October    • Tuesday 23<sup>rd</sup> November**Summary Report - Parish Council Meeting**

Recent parish council meeting minutes will be summarised in the October edition of Hill &amp; Valley

All minutes and reports can be viewed at

[www.stmarybourne-pc.gov.uk](http://www.stmarybourne-pc.gov.uk)

Details of all Planning Applications for the Parish can be accessed on the B&amp;DBC website:

[www.basingstoke.gov.uk/planning](http://www.basingstoke.gov.uk/planning) or by contacting the Parish Council Clerk ☎ 01264 738 039**Newly registered Planning Applications  
September 2021**• Alteration and change of use of existing barn to artist's studio associated with residential use at **Stubbs House, Binley** - 21/02410/FUL - 20 July 2021• Single storey extension to the rear elevation - **12 Stevens Green** - 21/02414/HSE - 20 July 2021• Installation of integrated "In-Roof" Solar PV panels to the rear of the dwelling (Retrospective) - **Pioneer House, Church Street** - 21/02182/RET - 29 June 2021• Conversion of loft space to a bedroom with roof lights to the south and north elevations, and window to west elevation - **6 Applegate** - 21/02180/HSE - 29 June 2021• Demolition of existing dwelling and outbuilding; erection of a replacement dwelling - **Gangbridge House, The Cottage** - 21/02147/FUL - 25 June 2021• Installation of replacement cladding, windows and roof covering - **Copse Cottage, Derry Down** - 21/02088/HSE - 21 June 2021• Erection of 2 no. dwellings, with associated access, parking, turning, landscaping, and private amenity space - **Land Adjacent To Bourne Valley Inn** - 21/02050/FUL - 16 June 2021**Recent Local Planning Authority Decisions**Creation of outdoor riding arena - **The Derrydown Estate** - 21/01447/FUL - 26 April 2021 - **Granted**Replace existing aluminium windows, add canopy and kitchen extension - **Portway, Church Street** - 21/01203/HSE - 17 May 2021 - **Granted**External alterations including removal of chimneystack, extension to rear store to contain new air source heat pump, installation of roof lights, demolition of greenhouse and installation of new greenhouse - **Eyles Cottage, Church Street** - 21/00974/HSE - 17 March 2021 - **Granted**Certificate of Lawfulness for the existing use of a farm office as a separate residential dwelling including alterations to building to create rooms in the roof, toilet/shower facilities and installation of drains - **Hilliers Farm, Upper Wyke Lane** - 21/00861/LDEU - 9 March 2021 - **Granted**Erection of a single storey rear extension (following partial demolition of existing). Associated internal alterations and repairs. Replacement of 2 no. ground floor front windows and 2 no. first floor rear windows. Raising and lining of chimneys with new chimney pots. Reduced perimeter paving levels - **Ricketts Way, Gangbridge Lane** - 20/03402/LBC - 7 December 2020 - **Granted**Erection of 1 no. detached dwelling; with associated parking, turning, landscaping, private amenity space and access - **Land To The South West Of Bells Meadow** - 20/02309/FUL - 21 August 2020 - **Application Withdrawn**Change of use of agricultural land to residential, to provide off street parking and additional external amenity space to four existing properties at land off Gangbridge Lane - **Horse Paddock, Stoke Road** - 20/01754/FUL - 28 July 2020 - **Refused**

## Parish Tree Warden

The Parish Council is looking to appoint a Tree Warden for the parish following the retirement of Peter St Quinton from this position after many years of service to the parish. I would like to thank Peter for his dedication to the task and the very helpful advice he has provided.

The Parish Council now has the difficult task of finding a replacement for this position and the terms of reference are as follows:

The Tree Warden Scheme is run by The Tree Council. The primary objective of the tree warden is to gather information about the local trees, get involved in local tree matters and encourage local practical projects related to the trees and woods.

To fulfil this objective the parish tree warden will:

- Attend the local Tree Warden Network meetings run by B&DBC.
- Look for opportunities to involve the community in taking an interest in planting and caring for hedgerows and trees.
- Keep watch on important trees in the parish in order to: Provide early warning of threats, disease, decay or vandalism, comment on planning applications which will adversely affect the trees and report any unauthorized work on trees, in particular within the Conservation Area.

If anyone is interested in finding out more about this voluntary position as parish tree warden, please get in touch with Ben Sawyer, the parish clerk – [clerk@stmarybourne-pc.gov.uk](mailto:clerk@stmarybourne-pc.gov.uk).

David Peart, Chairman of St Mary Bourne Parish Council

## St Mary Bourne Playground

Following on from our update on the play area redesign, we are gathering more information in the form of a short survey from SMB residents and anyone who uses or visits the playground from across the Valley. This survey is part of our wider community outreach over the coming months to gather your input. The results of this survey will be used in our grant application process, as a

way to demonstrate why this update is needed and who will benefit from it. Any support is greatly appreciated! To complete the survey, please follow the link via this QR code. Paper copies can also be found in the SMB Village Shop from September. Thank you very much for your support. *The Recreational Ground Committee*





## P.J.ROPER

Traditional Builders

Traditional Building & Period Property Specialists

### CONTACT:

Office - 01256 892993

Mobile: 07770 368176

kathleenroper@btinternet.com

## Richard Steel & Partners

*The Family Owned Funeral Directors*

**(Serving Hampshire since 1860)**

Alderman House, 12-14 City Road, Winchester

☎ **(01962) 862333**

**www.steelsfunerals.co.uk**

## BELVEDERE TRAVEL



**Catered gulet holidays in Turkey**

**www.belvederetravel.com**

**email info@janeblount.co.uk**

**01264 738533 and 07884003082**

## BOURNE Again Feet

Hilary Steeden MGFHP MAFHP

Foot Health Practitioner

Tel: 01264 738 554

Mob. 07787 703 900



. Problem Nails . Verrucas

. Corns . Cracked Heels

. Hard Skin . Fungal Infections



## BINLEY HOUSE FARM B&B

Bed & Breakfast  
in the quiet hamlet of Binley  
in the Hampshire countryside  
near the charming village of  
St Mary Bourne. En-suite  
bedrooms, full English or  
continental breakfast and a  
warm welcome.

Horse B&B for two horses also available. Binley House Farm is home  
to champion Arabian horses. Email: [binleyhousefarm@gmail.com](mailto:binleyhousefarm@gmail.com)  
or ☎ **01264 738343** [www.binlevstud.com](http://www.binlevstud.com)

## WEST JOINERY

Bespoke doors,  
windows,  
kitchens,  
wardrobes,  
bookcases.

*For all your  
joinery needs*

**07717 570748**

[Julian@uswests.co.uk](mailto:Julian@uswests.co.uk)



**JULIAN WEST CARPENTRY**  
a company built on reputation

Loft Conversions . House  
refurbishments  
Kitchens . Bookcases . Wardrobes  
General Carpentry and  
construction

We pride ourselves on offering  
quality service and workmanship  
which enables you to see the full  
potential of your property

For further details please contact  
us on 01264 860392  
or 07717 570748

Email: [julian@uswests.co.uk](mailto:julian@uswests.co.uk)

## BREACH FARM WOODLAND BURIAL GROUND ST MARY BOURNE, SP11 6DQ

A beautiful woodland burial ground  
overlooking the Bourne Valley

Single, Double and Ashes plots available.  
Area for pets.

For further information/request a brochure:-  
Mobile: 07789 888399

Email: [lisa@breachfarmwoodlandburialground.co.uk](mailto:lisa@breachfarmwoodlandburialground.co.uk)  
[www.breachfarmwoodlandburialground.co.uk](http://www.breachfarmwoodlandburialground.co.uk)



**FREE INITIAL CONSULTATION**

**"FRIENDLY, ACCESSIBLE AND QUALITY SERVICE"**

**YOUR LOCAL WILL WRITER FROM WHITCHURCH**

- Will Writing
- Review of existing Wills
- Lasting Power of Attorney
- Estate Planning
- Trusts
- Probate Services

Clare Datta, BA(Hons) MSWW  
T: 01256 896336 M: 07810 455581  
E: [claredatta@whitchurchwills.co.uk](mailto:claredatta@whitchurchwills.co.uk) W: [www.whitchurchwills.co.uk](http://www.whitchurchwills.co.uk)



Safe to do  
business with  
Code Compliant

## Launching the St Mary Bourne Women's Institute

Ladies of St Mary Bourne Parish  
come and join our inaugural meeting to find out more

*We need you!*

**Monday, 27<sup>th</sup> September 2021 - 7 to 9pm**

**St Mary Bourne Village Centre**

Bring a friend. Refreshments available

To register please email [stmarybournewi@gmail.com](mailto:stmarybournewi@gmail.com)  
or just come along

*We look forward to seeing you*



## Light Touch

### What about an allotment?

Allotments came about in part through enclosure of the common land when it was appropriated and assigned to one

landowner. This process started as early as the 12<sup>th</sup> century and speeded up in the 18<sup>th</sup> and 19<sup>th</sup> centuries leading to the loss of subsistence farming, where most of the food was for local consumption, and the start of monocultural farming and the transport of food. The gradual mechanisation of farming meant a loss of livelihood and movement to the towns. There were many protests and in 1887 the government made it law for councils to provide allotments if there was local demand for a peppercorn rent. It was seen as a way to keep the landless, and often jobless, population busy and prevent starvation. Both world wars increased the provision of allotments as local food became an urgent need. In 1917 the number of allotments peaked at 1.5 million.

By the 1960s food had become plentiful and cheap and allotments out of fashion while the fast population growth meant that developers could snap up these plots cheaply for housing. Now in the 21<sup>st</sup> century we are slowly becoming aware of the dangers of mass production with its need for pesticides and herbicides let alone the dangers of factory produced animals. We are beginning to ask where our food has come from at last and much of the news can be quite a shock. Research by the Royal Horticultural Society and *Which?* Magazine found that a competent allotment holder or gardener can grow four to eleven times the weight of produce of an intensively farmed same size field. Statistics are wonderful, but the point is we could help feed ourselves healthily and cheaply, even if we live in a flat, if we re-establish allotments in each town and village.

The reason messy old allotments are so successful is primarily the wonderful healthy soil built up by traditional vegetable gardening, lots of cover, occasional weeds and the multi-cropping which encourages beneficial insects and animals to move in to fight the pests. No space is wasted and of course they are labour intensive, but they are also sociable, a great place to learn from others, make friends and get gentle exercise. All these latter factors are now medically proven to be stress reducing and good for our health.

Inspired? So, what are you waiting for? Gov.uk website says apply to your local council and they will allocate you an allotment or put you on the waiting list. Basingstoke and Deane have a 4 to 10 year waiting list and only sites in the town itself are mentioned, while Test Valley states they have nothing to do with allotment allocation. Shed retailer Power Sheds sent freedom of information requests to councils across the UK and found that in 2019 there were 90,000 people waiting for a space at one of the 300,000 council-run allotments across the UK. St. Mary Bourne's allotments, I have been told, were in the fields above the recreation ground and lake with some more

behind the school where the two bungalows are now and reaching as far as the school's pond and wildlife area.



## St Mary Bourne & District Flower Show and Fête 2021



A wonderful day was had by all at the St Mary Bourne Flower Show & Fête held on 24<sup>th</sup> July. It was great to see everyone out and about enjoying themselves with not a mask in sight!

Thank you to all those who attended and helped out on the day and in advance. A great selection of stalls plus music, delicious food and drink. Lots of fun with the dog show, tug of war, coconut shy, fire engine, penalty shoot-out, plate smashing, welly throwing, fairground rides, bottle stalls, splat the rat plus much, much more. Thank you to Vitacress for their continued support and to all our sponsors. Also, to those who so generously donated the amazing raffle prizes. A full list of sponsors and raffle prizes can be found at [www.stmarybourne.org/flower-show-and-fete](http://www.stmarybourne.org/flower-show-and-fete).

As a thank you to all those involved the committee would like to invite sponsors, donors, all those who helped in any way and those interested in getting involved next year to join us for drinks on **Friday 8<sup>th</sup> October at 7.30pm** in the Village Hall.



## Go Star Gazing in September

**7 September - New Moon** - Moon will be located on same side of Earth as the Sun and will not be visible in night sky. Best time of month to observe faint objects such as galaxies and star clusters as there is no moonlight to interfere.

**14 September - Neptune at Opposition.** The blue planet will be at its closest approach to Earth and its face fully illuminated by the Sun. It will be brighter than at any other time of the year and will be visible all night long. Due to its extreme distance from Earth it will only appear as blue dot in all but most powerful telescopes.

**14 September - Mercury at Greatest Eastern Elongation.** The Planet Mercury reaches greatest eastern elongation of 28.8 degrees from Sun. Best time to view Mercury as it will be at its highest point above the horizon in the evening sky. Look for the planet low in western sky after sunset.

**20 September - Full Moon.** Moon will be located on opposite side of the Earth as the Sun and its face will be fully illuminated. Phase occurs 23.54 UTC. Known as Corn Moon by Native American Tribes. Also known as Harvest Moon, as it is the full moon that occurs closest to September Equinox each year.

**22 September - September Equinox** - this occurs at 19.11 UTC. Sun will shine directly on equator and there will be equal amounts of day and night throughout the world. This is also the first day of fall (autumnal equinox) in Northern Hemisphere and first day of Spring (vernal equinox) in Southern Hemisphere. Clear skies are ideal for observing dark night skies in our rural location. Please try to minimise light pollution by reducing outdoor lighting. This benefits wildlife, environment and humans alike. Remember to wrap up warm when Star Gazing. Make a flask. Allow 15 minutes for your eyes to adjust to the dark. Use a recliner and enjoy these free shows.





Pest Problems? Call the experts!

## TEST VALLEY PEST CONTROL

RATS. MICE. SQUIRRELS. MOLES. RABBITS. BIRDS.

CLUSTER FLIES. FLEAS.

BED BUGS. ANTS. WASPS.

CLOTHES MOTHS, ETC...



Office: 01256 771632

Mobile: 07718986858

All aspects of pest control undertaken

## Blackwell & Moody

A full range of memorials on display. Available in granite, marble, stone and slate. Existing memorials restored and cleaned. A personal individual service.

Magdalen Masonry Works,  
Alresford Road,  
Winchester, Hants  
SO21 1HE

Tel: 01962 852 476

## Dave Taylor Auto Repairs

Green Lane, Stoke  
SP11 0PF

All work undertaken including

- Bodywork
- Paintwork
- Servicing
- MOT prep work
- Welding and repairs to MOT standard

**All makes, models, light commercials**

**01264 736279**

Home: 01264 323571

Mob: 07792 473174

## Fine, Bespoke Kitchens



[www.saxondesigns.co.uk](http://www.saxondesigns.co.uk) : Tel 01264 773333  
Studio at Weyhill Farm, Weyhill, SP118DE



## RESTORATION SERVICE FURNITURE | ANTIQUES | OBJET D'ART

By experienced craftsman in Barton Stacey

- Repairs
- Polishing
- Upholstery
- Marquetry
- Floors
- Banisters
- Leather Tops
- Projects

Phone Tim Williams 07565 591481

Email: [trwilliams71@gmail.com](mailto:trwilliams71@gmail.com)

# HAVEN

MEMORIALS

**HAVEN MEMORIALS**  
are a family run business with over 30 years' experience of creating bespoke headstones.

We pride ourselves on our friendly service and impartial advice. Contact us today to discuss your requirements.

Haven Memorials, Unit/Shop 2, 6 Wote Street,  
Basingstoke, RG21 7NW

Tel: 01256 811829

[admin@havenstone.co.uk](mailto:admin@havenstone.co.uk) [www.havenstone.co.uk](http://www.havenstone.co.uk)

## YorkAssociates

Architectural Design Services  
Planning Consultants

- Full design services
- Planning applications for new houses and extensions
- Applications for Listed Building Consent
- Building Regulations submissions



**Andrew Steeden MRICS**  
Chartered Building Surveyor

Telephone: 07393 025574

[andy.yorkassociates@gmail.com](mailto:andy.yorkassociates@gmail.com)

[www.yorkassociates.org](http://www.yorkassociates.org)

## Satellite & aerial



### Satellite & Aerial:

- TV Aerial Installations and Repairs
- Sky Satellite Installations
- Freeview & FreeSat
- FM & DAB Radio Installations
- Extra TV, Satellite & Telephone points
- Commercial (IRS, CCTV)
- European & Motorised

### Sound & Vision:

- Home Entertainment Systems
- Home Cinema
- Multi Room Audio Visual Installations
- LED, LCD, Plasma TV's & Projectors
- Home Automation Systems
- Lighting Control
- Commercial

For a friendly and professional service please call 01264 934 824, email [info@onedegreewest.tv](mailto:info@onedegreewest.tv) or visit [onedegreewest.tv](http://onedegreewest.tv)



**one degree west**  
satellite & aerial

# KMSERVICES

Est. 1997



Painting & Decorating Specialists  
Replacement Guttering, Cast Iron & Plastic  
Gutter Cleaning & Maintenance

Tel: 01256 892122 Mobile: 0777 562 4488

Find us at [www.kmservices.info](http://www.kmservices.info)

All work is tailor made to your specifications and carries a workmanship warranty

## Postcard from Binley September 2021

Often, very little happens in Binley. But then that's its charm, or it is for me. But right now it's high drama as the July heatwave has at last broken with thunderstorms and torrential rain and the little river Bin is in full spate. I'm at my desk staring out the window, wondering what to write, mesmerised by rain falling on petals.

It was good to see the Flower Show back, one small step on the rocky road to normality and amid all the happiness tinged with sadness because for the first time in I don't know how many years there was no Tony Grunsell out on the rec', the very nicest of men and a huge supporter of village causes. Dear old Tony. But the Show goes on as they say and in these ghastly modern times it is a tender reminder of how simple things can be so pleasurable and what gave you pleasure as a child can still resonate with children today.

Were you lucky enough to see the field of poppies that appeared as if by magic to the south of Elm Farm heading toward Binley Bottom? I don't think I've ever seen poppies of such intensity and density. It rocked me back on my heels each time I passed, and I could only stand and gawp. And it was while I was gawping that my attention was turned to a dozen or so freshly hatched partridge chicks that were buzzing around my feet and out into the road. The mother was frantic with worry but too scared to come close to me, so I tried to back off, but the chicks just followed me! The mother, exasperated at this point ran up the bank and stuck her head down a hole, such was her temperament. So, for maybe an hour I played surrogate mother, stopping cars, dog walkers and cyclists from crushing the poor mites. Eventually emboldened she bossily gathered them up and went marching off into a field, but it was a memorable moment from this summer. Their chances of survival are pretty grim, in fact I passed a pair with just three young yesterday in the same spot and they all took to the wing like a squadron of Spitfires. Whether it was that earlier brood I'll never know but I'm hopeful that at least a few made it. The predation on them is enormous with foxes, badgers, stoats and weasels and a multitude of various raptors all keen to have a go. Even the remnants of the feral cat colony at the old Binley Dairy (now Heron Down Farm) are still about and chicks would be easy pickings for them.

August in Binley has blown in with very changeable weather, one day hot sun the next rain and wind. The lush verges of June and July have given way to the dry, dusty swathes of high summer with the occasional splash of colour provided by corn flowers, daisies and tall spikes of rosebay willow herb. Cow parsley, a month ago choking lanes and pathways like invasive fluffy clouds now stands brown and brittle and I spotted a yellow wagtail hanging from one this morning pecking away at the seed head. That must be quite a rare sighting nowadays. I remember as a child using the stalks as pea shooters, firing dried peas at the backs of other boy's heads in class. My paternal grandmother on seeing me with one told me how as a girl her and her mother worked as "knocker uppers" in the East End at the turn of the last century, knocking on bedroom windows waking people to get up for work. She also used a pea shooter with dried peas to rattle the panes and my great grandmother a long stick. They were as poor as church mice, scratching just a few extra pennies a week. I spotted an egret high in the branches of a tall tree at the rear of Gangbridge Cottage and I have to confess it took me a while to work out what it was. It swooped down, the first time I've ever seen an egret fly, and landed by the pond which has become an oasis for all sorts of water birds. With the Bourne so choked up it is the only open bit of water this end of the village and it's packed with Canada Geese, umpteen varieties of duck, the egret and a lone heron amongst others. I must say I find it very therapeutic leaning on the parapet of the old bridge lost in my thoughts as the watery antics carry on below me.

Just before bed I have taken to pouring myself a single malt and taking a seat on a bench in the garden. With dusk gathering around me the rooks in the rookery are settling down for the night too. The boisterous cackling and calling of earlier becomes a muted chatter and it's rather comforting. But I'm out here to enjoy my whiskey and watch the bats. I have a colony of pipistrelle bats that live under the eaves and in the chimney on the west side of the house. I can no longer light fires there as within minutes the room is filled with smouldering, cheesed off pipistrelles all coughing like Dot Cotton after a day on the Benson and Hedges. On the odd occasion one will fly in through an open window and all hell lets loose as family members barricade themselves in their rooms, dogs go hysterical and I'm dispatched to apprehend it armed with a child's shrimping net. They are tiny little creatures and blindingly ugly, though in a rather cute way and I love having them around.

NA



## PRIORS PLAYERS PANTO JANUARY 2022 - ALADDIN



After a few years rest, the Players have decided to have a Panto this Christmas and have chosen Aladdin. I moved to the village in January, with Janet my wife, and am keen to direct the panto. The Players are good to go and keen to put it on, but what is needed most of all is A CAST!

There are parts for people of all ages, from 8 to 80, but it is an opportunity for younger people to get involved either for the first time or to continue their AM DRAM career!

We are having read throughs of the play at the Club Room of the village hall on Wednesday 8<sup>th</sup> September and 15<sup>th</sup> September, with Auditions on 29<sup>th</sup> September, all at 7.30pm. Rehearsals will start a week later.

***If you are at all interested, please come to a read through, entirely without obligation.***

Of course, we also need people to help backstage and if you are interested please feel free to come along as well and chat about how you could help. See You There!!

John West



Serving the local community for over 15 years

## Complete **h<sub>2</sub>O** Services

Plumbing & Heating Engineer

OFTEC registered & Grant approved

24 hour call-out service

Registered  
Oil Heating  
Business



Contact 07990 897372

info@complete-h2o.co.uk

www.complete-h2o.co.uk

## TEST VALLEY GARDEN MACHINERY LTD

INTRODUCTORY OFFER:  
**FREE COLLECTION & RETURNS**

LOCAL RESTRICTIONS APPLY

— *Never knowingly undercut* —

Tel: 0800 107 3263

FOR ALL YOUR  
REPAIRS • SALES • SERVICE

www.tvgm.uk



## RAMPTON ELECTRICAL CONTRACTORS

your local professional electrician covering  
all areas of Wiltshire & Hampshire

All domestic & commercial electrical  
works undertaken - Bespoke Lighting Specialist

**01980 734004**

Michael@Ramptonelectrical.co.uk

## P C BUTLER BRICKWORK

General and Traditional Building  
Roofing, Maintenance & Repairs,  
Painting & Decorating

*No job too small*

01256 781830 or 07833 586250

paulbutler3@hotmail.co.uk



We can help you meet all your pet and equine healthcare needs, with professional and caring staff who can treat your animal at a time that suits you. Our vets offer an emergency service giving you 24 hour reassurance.

... we're here to listen

**24 hour phoneline: 01635 254544**

### OUR SURGERIES:

Burlyns Surgery, Burlyns,  
East Woodhay, Newbury,  
Berkshire, RG20 0NU.

Foxhold House Surgery,  
Crookham Common, Thatcham,  
Berkshire, RG19 8EL.



www.coachhousevets.com

### Robert Allnutt Building & Garden Maintenance

I am based in Longparish, my work is varied and has included Building a Bridge over a River, Bespoke fitted cupboards Shelves and bookcases, Kitchen and Bathroom makeovers, Raised garden beds, Gates and Fencing. I also make Log and Bin stores.

See me on Facebook

**Robert Allnutt Building  
and Garden Maintenance**

Message or phone to quote for your  
future indoor or outdoor projects

Mobile 077 33 212 809  
rob.allnutt@yahoo.co.uk



## FREEDOM BI-FOLDS

Bifolding and Sliding Doors – Windows - Residential Doors



Contact us today:

01264 301 302

info@freedombifolds.co.uk

Visit our showroom at Andover Down, SP11 6LJ



## Obituaries

### Alan Douglas Marsden

15<sup>th</sup> April 1935 – 3<sup>rd</sup> June 2021

Alan Douglas Marsden was born in Surrey on the 13<sup>th</sup> April 1935, a younger brother to Jean and son to George & Edith. When war broke out, Alan and his mother went down to Dorset to stay with the family of his beloved nanny, Joan and despite the hardships of pre and post war Britain his childhood seemed rather idyllic.

He was educated at Ottershaw School where he excelled in many areas and developed his love of sport, including cricket, athletics, rugby and squash. After leaving school he took up a place at the Royal Military Academy, Sandhurst graduating as a Lieutenant in the Royal Artillery. Over the years he was deployed to several countries including Malaysia, Hong Kong, Singapore and Germany with tours of both Northern Ireland and Cyprus. Alan attended both Staff College and the National Defence College and was Lt Colonel of the 25<sup>th</sup> Field Regiment.

He loved his time in the Army where sport was a major interest. Alan played for the Army squash team and became Colony Squash Champion of Hong Kong in 1961. He was also a very keen cricketer, playing to a high standard.

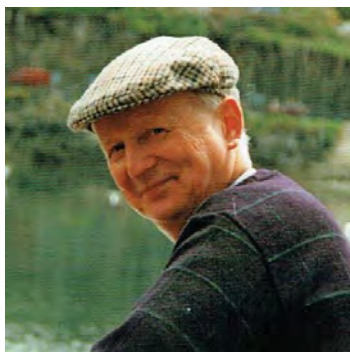
Whilst in the Army, Alan met his first wife, Joanna. They went on to have three daughters, Julie, Nessa and Mary. They bought Spring Hill in St Mary Bourne in 1968 but sadly Joanna died of cancer in 1977 at the age of 38. Alan then married Dodie and had three more children Christopher, Clare and Tom. Their marriage recently celebrated 40 very happy years.

Life in the local community was very important to Alan and he made a tremendous contribution to it. He served on the parish council as vice-chair and then chair for many years. He was a playing President of the cricket club and became a member of numerous other local societies and steering committees for parish

improvements, including the building of the "new" Village Centre where his admin skills and ability to cut through bureaucratic waffle and muddle were highly valued. He retired from his civilian job at the Mission for Deep Sea Fisherman aged 67 and then had more time to pursue his passion for gardening. He was knowledgeable and competitive and got great enjoyment from entering classes at the annual Flower Show and Fête. Alan will also be remembered as a very generous host and convivial guest at parties, and his presence, surrounded by friends and much laughter, enlivened many local hostelrys throughout the years.

Sadly the onset of Parkinson's disease in 2008 started a slow cruel decline but he showed great fortitude until finally he required fulltime residential care. He died peacefully at Millway House nursing home on Thursday 3<sup>rd</sup> June.

Alan was a much loved friend and family man. He was devoted to his children and taught them the value of fair play, good manners, commitment and hard work when they were young and then guided them with support and wisdom as they moved to adulthood. He was proud of all his grandchildren and fortunately he was able to meet Tom's twins Charlie and Clemmie just a few weeks before he died. His memory will live on in the hearts of all who knew him.



Alan Marsden – family man, soldier, sportsman, gardener, loyal friend and generous contributor to the local community – R.I.P.

### Rose North

15<sup>th</sup> July 1946 – 16<sup>th</sup> July 2021

*Compiled from the tribute given at the funeral service held in St Peter's on Tuesday 3<sup>rd</sup> August.*

Rose was born on 15<sup>th</sup> July 1946 at her grandparents' house at 3 Egbury Road, St. Mary Bourne. She was the first child of Vera and Frank Kimber and she was christened Rosemarie Isobel Ann. Rose had three younger sisters, Cath, Trisha and Joyce. They grew up in the family home at 1 Egbury Road, just two doors away from their grandparents.

Rose attended St Mary Bourne primary school and then moved onto Whitchurch Secondary School at age 11, travelling to and from school on Tibbles buses. She enjoyed school where she was a good all-rounder.

In her free time she did a lot of walking and also frequently went out with her Gran, riding their bikes all over the place collecting for the charity NSPCC. She was confirmed in St Peter's Church and was a member of the bell ringing team.

When Rose was eighteen years of age she met Les North. He was the brother of a friend of hers. They started courting and after one and a half years they got engaged and were married on Rose's 21<sup>st</sup> birthday in St Peter's. They started their married life living with Les's parents before moving into their own house at Long Leaze, Stoke which became their forever home.

When Rose left school she first went to work at Portals Paper Mill in Overton, then moved to Motley Turkey Farm at Andover Down. Following this she trained as a dental nurse and worked for Mr. Henry until Mr. Henry retired. She then decided on a change of career and undertook secretarial work for a while before returning to being a dental nurse at East Street dental practice in Andover where she stayed until she retired.

Rose had many friends and would always find time to enjoy coffee, cake and a good natter. Her hobbies were gardening, knitting, sewing and walking. She belonged to a sewing club at the Baptist Church in Andover where she made beautiful quilts and she also knitted jumpers to send to children in Africa. She loved listening to music and at family events she was always one of the first up on the dance floor. She enjoyed many holidays over the years and became well-travelled. Her favourite place was Sorrento in Italy and she also loved Lake Garda. She cruised on the Queen Mary to USA and back, and in later years she enjoyed holidays with friends in Bournemouth.

Rose came from a caring family. She and her sisters looked after their Mum after their Dad Frank passed away, helping with gardening, general household duties etc. Her sisters remember her for her kindness (she was always there when needed through good times and bad); all the smiles, giggles and laughter they shared; her love of music and dancing; and her sound good advice. The family miss her enormously and will love and treasure her forever. Everyone who knew Rose will always hold fond memories of her.



There will be a tribute to Keith Hirst in the next issue of Hill & Valley.



## Longparish

- 11 12noon to 4pm - Longparish Fête - Cricket Field  
 11 10am to 6pm - Historic Churches Trust 'Ride and Stride' event - St Nicholas Church  
 13 7.30pm - Parish Council Meeting - Village Hall  
 17 9.15am - Friday Litter Pick - Longparish Village Hall  
 24 12noon - Friday Lunch Club - Longparish Village Hall  
 24 - 25 7.30pm - Longparish Choir - St Nicholas Church  
 28 7pm - Longparish Gardening Club Talk - Village Hall

## Hurstbourne Priors

- 11 7pm - Midsummer Dinner and Auction - Village Hall  
 23 10.15am - Ladies' Coffee - Cricket Pavilion  
 26 11am - Animal Service - St Andrews Church  
 29 7pm - Parish Council Meeting - Village Hall  
 3 Oct 11am - Harvest Festival and Harvest Lunch St Andrews and the Village Hall  
 9 Oct 6.30pm - Christopher Burrows, Piano recital St Andrews Church

## St Mary Bourne

- 11 10am to 6pm - 'Ride & Stride' Historic Churches event  
 14 10.30am - Coffee at The George Inn  
 21 7.30pm - The Film - 'military wives' - Village Centre  
 21 7.30pm - Parish Council meeting - Club Room  
 24 7pm - An Evening of Music - St Peter's Church  
 26 3 to 8pm - Village Shop "20" celebration - Village Centre  
 27 7pm - Women's Institute - Village Centre  
 1 Oct 6.30pm - Welcome for new villagers - Village Centre



Egret - July - Bourne Rivulet at Swampton

Andover Artisan Market  
 Sunday 19<sup>th</sup> September  
 10am to 2pm - High Street

Front cover: St. Nicholas Church, Longparish  
 The Woodcock Window *The Four Seasons*  
 See also Longparish pages 1 & 2

**Hurstbourne Priors Village Hall:** Mrs Helen Ford, ☎ 07789 691018, e: [helenford62@hotmail.co.uk](mailto:helenford62@hotmail.co.uk)

**Longparish Village Hall:** Mrs Jacqui Healey, ☎ 07748 322533, e: [villagehall@longparish.org.uk](mailto:villagehall@longparish.org.uk)

**Longparish Community Hall:** During school open hours, Mrs Christine Leach ☎ 01264 720317

**St Mary Bourne Village Centre:** Miss Angela Cook, ☎ 01264 738158, e: [smbvillagecentre@btinternet.com](mailto:smbvillagecentre@btinternet.com)

**Copy date for the October 2021 Hill & Valley edition: Wednesday 15<sup>th</sup> September 2021**

Your contributions - letters, pictures, comments or articles are always welcome. Contact your parish editor by the copy date.

Printed by **The Andover Printing Company Ltd** ☎ 01264 334220 [www.andoverprinting.co.uk](http://www.andoverprinting.co.uk) © Hill & Valley Parish Magazine 2021

### Parish Editors

**Hurstb' Priors:** Fenella Williams, Old Parsonage, H'b Pr,  
 ☎ 01256 892081, e: [fenella.williams@btopenworld.com](mailto:fenella.williams@btopenworld.com)

**Longparish:** Georgina Montague, Westbrook Cottage,  
 ☎ 01264 720 493, e: [hillandvalley@longparish.org.uk](mailto:hillandvalley@longparish.org.uk)

**St Mary Bourne & Woodcott:** Pearl Pritchard, Downhams  
 Cottage, Egbury, StMB, ☎ 07869 727 452,  
 e: [pearlpritchard@outlook.com](mailto:pearlpritchard@outlook.com)

**Editorial:** Tom Bremridge, Longparish ☎ 01264 720 540  
 Michael Widén, St Mary Bourne ☎ 01264 738 250

**Production/Distribution:** Tom Bremridge, Bramblegate,  
 Longparish, ☎ 01264 720 540, e: [tbremridge@gmail.com](mailto:tbremridge@gmail.com)  
 Michael Widén, Batsford Hs, StMB, ☎ 01264 738 250,  
 e: [m.widen@btinternet.com](mailto:m.widen@btinternet.com)

### Websites

\* Hill & Valley pages on-line

**Hurstbourne Priors:**

Parish Council: [www.hurstbournepriors-pc.org.uk](http://www.hurstbournepriors-pc.org.uk) \*

**Longparish:**

Parish Council: [www.longparish.org.uk](http://www.longparish.org.uk) \*

**St Mary Bourne:**

Parish Council: [www.stmarybourne-pc.gov.uk](http://www.stmarybourne-pc.gov.uk) \*

Village Centre: [www.stmarybourne.co.uk](http://www.stmarybourne.co.uk)

Community Hub: [www.stmarybourne.org](http://www.stmarybourne.org)

### Advertising

Michael Widén, Batsford House, St Mary Bourne,  
 ☎ 01264 738 250, e: [m.widen@btinternet.com](mailto:m.widen@btinternet.com)