

Hamble-le-Rice

VILLAGE MAGAZINE

MARCH 2018



Hamble Conservation Volunteers beach cleaning, see page 13

Issue 313

Published by Hamble-le-Rice Parish Council and distributed free throughout the Parish and at
www.hambleparishcouncil.gov.uk

Hamble marquee hire



*Marquee hire, all types of catering, temporary bars,
furniture hire and luxury toilets for
Weddings, parties, corporate events and all occasions.*



www.rumshack.co.uk

Call us on 07973719622 for information

email enquires to ian@rumshack.co.uk

Council News

The Parish Council previously endeavoured a decade ago to seek a boundary change to overcome anomalies to its northern boundary. Currently, it goes through The Hamble School and Mercury Marina sites, the Blackthorn Health Centre address is Hamble but it is within Hound. Wessex Manor is also in Hound although most of the people feel it is in Hamble and if its residents have problems they usually seek our Parish Council's help and advice.

The Council is taking the opportunity of the Community Governance Review to request that Hamble's boundary be extended to include land to the east of Hamble Lane to the Bursledon Parish Council's boundary. This is to overcome the anomalies described above and strengthen the strategic gap.

Matt Blythe the Borough Council's Local Area Manager attended the February Council meeting to up date it on a number of projects. The construction work on the

Community Library/Hub is on target to be completed by the end of May and its opening will be sometime after this date when organisational details have been finalised and are in place. Work has started on the parking bays in Coach Road as part of the Coronation Parade refurbishment and shortly there will be a consultation regarding the Public Art that has been commissioned as part of the scheme. Some of the work is awaiting a road safety audit before it can be progressed although it has been decided that the raised table in the road in Kings Avenue will not be implemented.

Matt also gave an update regarding youth facilities in our area the main points being that the YMCA, who had been undertaking this work for the last few years, do not wish to continue and the Borough Council are looking at the Youth Options charity to take over this work from April. He also spoke about the problems with the storm damage to the gun emplacement

Hamble-le-Rice Parish Council

Memorial Hall, High Street, Hamble-le-Rice, Southampton SO31 4JE

Telephone: 023 8045 3422 (Office) or 07402 648 050
07949 160 885 (Grounds Team)

Email: clerk@hamblepc.org.uk / asstclerk@hamblepc.org.uk
groundsman@hamblepc.org.uk

Office open Mondays and Fridays 9am to 12.30pm and 1.30pm to 5pm
(open until 6pm on the second and fourth Mondays of the month)

Hamble-le-Rice
VILLAGE MAGAZINE

Advertising & Editorial Enquiries: 07805 012 794 / vmag@hamblepc.org.uk

DEADLINE FOR APRIL ISSUE: 3pm, Tuesday 13th March

The views represented in contributions submitted are not necessarily those of the Parish Council's or the editor. The editor and Parish Council accept no responsibility for goods or services advertised.



RIVER LETTINGS, HAMBLE

we accommodate life

We have now moved the administration of our core lettings and management services to a new centralised office location from where we can take care of our south coast and midland portfolios.

Our Hamble office remains open on an appointment basis, with Hamble resident staff happy to provide lettings viewings and property assistance.

We'd like to thank every one of our wonderful clients, tenants, contractors and friends for your continued support and kind comments over recent weeks. We are genuinely proud and honoured to represent you all.

For all lettings, maintenance and marketing enquiries

023 8045 7864

hamble@riverlettings.com

www.riverlettings.com

6 Coronation Parade, Hamble SO31 4JT

River Lettings Ltd. Registered in England & Wales. Company number 07768259
Registered office: 20-22 Wenlock Road, London N1 7GU

Council News (continued)

on Hamble Common but they cannot undertake any work until responses from other regulatory bodies such as Historic England have been received.

Recognising the concern about plastic in the marine environment the Council has decided to help reduce the use of plastic bottles by initially encouraging businesses to refill water bottles and, in the longer term, to provide water bottle filling facilities at appropriate places in the parish. The Parish Council has adopted a tree policy for Hamble and details of this will be on its website. It has also commissioned a biodiversity survey including recommendations on what could be done to improve opportunities to support wildlife in the parish and the Council has agreed an action plan.

The Parish Council is purchasing new equipment - to replace old machinery with a focus on machinery with less vibration

and, where economically viable, battery powered. The Council has been reviewing its staffing requirements and has decided to employ an Administration Assistant, further details will be posted on the website, social media and on the Councils noticeboards. If you are interested contact the office.

Before the first Planning Committee meeting its terms of reference were agreed and the Council has been discussing its aspirations for planning relating to Hamble in the future. As the result of the recent WeRHamble survey that has provided more up to date information it has been agreed to withdraw the 2008 Hamble Village Plan. After the Dinghy Park consultation meeting and the successful festive lights this year the Council is following these up and will be seeking parishioners' views soon regarding the location of the Christmas tree in the Square.

IMPROVEMENTS TO CORONATION PARADE

Work on a series of improvements to Coronation Parade in Hamble is set to get under way.

Coronation Parade will benefit from a number of improvements including resurfacing the area in front of the shops, redesigning the steps to include tree planting and improving paving and parking. The aim is to give more prominence to the Parade as people come into the village.

As part of the improvements we will be installing bespoke, decorative railings. We would like your views on the three proposed designs.

From Monday 26 February to Monday 5 March you can view the proposals at:

- www.eastleigh.gov.uk/coronationparade;

- www.hambleparishcouncil.gov.uk;
- at the Hamble Parish Office; or
- in shop windows in Coronation Parade

Please let us know which design you prefer by completing a short on-line survey or contact Local Area Manager, Matt Blythe at matt.blythe@eastleigh.gov.uk or phone 023 8068 8311.

The scheme is being funded by Bursledon, Hamble-le-Rice & Hound Local Area Committee (LAC) using 'developer contributions' from nearby developments and grants from Hamble-le-Rice Parish Council and the Tesco 'Bags of Help' programme. The final decision on the best design will be made by the LAC taking into account public feedback.

P & L DECORATING

HAMBLE - ESTABLISHED FOR 20 YEARS

- Interior and Exterior
- Free Estimates
- Fully Insured
- No job too small

Tel: 023 8045 3196
Mob: 07517 976 198
Email: philbolwell@gmail.com



Odd Job John



For those DIY jobs you don't have
time to do!

Working in and around Hamble

Just Ask...

John Coke
t - 07966 187041
e - ojhamble@gmail.com
f - @OddJobJohnHamble
w - oddjobjohn-hamble.co.uk

HAMBLE SPA ROOM

An experience to experience

Offering

- Full range of Espa Face, Body treatments & Body wraps
- Airbase makeup – a flawless finish for that special day - Wedding/Proms etc
- Various Massage techniques, including Hot stones
- Lycon Wax – the best wax for a comfortable waxing experience
- Luxury Manicure - Pedicure – Shellac
- Hamble Spa Room 'Ready & Wrapped' gift vouchers available.

Call Sonia – 07727 461008 or visit the web site – www.hamble-spa.co.uk
22 Deanfield Close, Amy Gardens, Hamble, SO31 4JJ

Hamble Oil Terminal Serving the local community

Contact Justyn Willsmore
BP Hamble Public Affairs - 023 8045 6028



Message from the Clerk

At the time of writing, the Community Library/Hub has just witnessed the roof steels going in and work is starting in earnest to look at how the facility is going to run. Along with Eastleigh Borough Council, we have been talking to Hampshire Library Service about how to run a volunteer led community library/book exchange and we have also had discussions with Barclays Bank about them providing one to one training each month on improving basic IT skills. The building will create a focus for a range of activities and we really want to hear from people or groups that could use the space. So far, we have had a number of volunteers come forward but there are lots more opportunities to get involved and in particular for younger people. So if you think you could be the person to run a 'Story-time' session or you have a burning passion for a craft or skill that you'd like to share with others now is the time to contact the Office. For those of you that have already volunteered: a big thank you and we will be in touch shortly to talk about the help and support you can offer.

At the end of January the Council met users of the Dinghy Park following an on line consultation. The Dinghy Park is a very valuable asset in the village and a key part of the Foreshore. It also produces income which funds other activities and services in the village. The evening was spent discussing what improvements could be made to the facilities, the way space is allocated as well as the management regime. At the end of the evening three volunteers came forward to join Councillors on the Dinghy Park Working Group and they will be overseeing the installation of a wash off area, an improved cleaning

regime to the slipway as well as being more directly involved in the monthly inspections. Opportunities to improve storage and secure racking for boards and kayaks are also on the agenda and it is hoped this will encourage different users to the area. On balance a very positive event.

Finally the Council has continued to look at how with can improve our environment. We are starting a campaign, like many others, to reduce plastics in the village especially given the recent coverage of the damage being done to marine and fluvial habitats through plastic pollution. We have started talking to shops and those involved in the hospitality sector about refilling water bottles free of charge and so far this has been well received. We are also hoping to work with other organisations to see what else can be done and will be keen to promote the work that others are doing in this important area.

We also now have a biodiversity plan which covers the areas of the village that we own and manage. It is available on the website. We will be starting to cut some grassed areas less frequently and leave swathes longer at the edges. We will also be creating log and brash piles from cuttings to increase habitats for wildlife. Over the next few months we will be focusing on keys locations and hoping to identify volunteers to help us manage areas. To start things off there will be a site meeting on Tuesday 6th March at 9.00am at the first car park at Westfield Common to consider how to prevent fly tipping and to improve the area more generally. If you're interested come and join us for an hour.

Amanda



YOUR LOCAL ACCOUNTANTS - HOW CAN WE CAN HELP?

Our Hamble-based team offer a friendly and professional service to local businesses.

Our clients include trades, professional consultants and the marine industry.

WE CAN HELP YOU COMPLY WITH YOUR OBLIGATIONS

• VAT • Tax • Accounts

AND HELP YOU BUILD YOUR BUSINESS

• Management Accounts • Budgets • Growth Planning

FREE INITIAL CONSULTATION

023 8045 3907 enquiries@accountably.co.uk www.accountably.co.uk

1st Floor, Unit 12, Compass Point, Ensign Way, Hamble, Southampton SO31 4RA

Little
Brook
House

Residential Care Home



A home that radiates warmth and understanding



Hampshire Care
Association
You're in caring hands

01489 582 821

www.littlebrookhouse.co.uk

101 Brook Lane, Warsash, Southampton SO31 9FE

60 YEARS ON THE HAMBLE-WARSASH FERRY

Ray helped with the ferry before he started as full time ferryman on the 8th February 1958 after completing his apprenticeship at a local aircraft factory. This started a life on the river getting up at 5.45am to take the first ferry passengers across at 6.50am to work at the local factories and running the ferry in all weathers, every day other than Christmas Day. It is amazing how many people said on a warm summer day his job was ideal and they would like to do it, but they did not think of long hours, lack of holidays and the many days with adverse conditions such as a cold, wet, windy winter day.



Ray at the start of his life operating the ferry.



Over the years Ray improved the ferry facilities from a dinghy powered by an outboard to today's specially built steel ferries. Eventually Ray purchased the ferry from Watneys the brewers, who owned the ferry and the Bugle pub. By the beginning of the 1990s he was taking approximately

40,000 passengers across the river each year. Due to the ever increasing demands of operating the ferry including new safety regulations, Ray decided to sell the ferry to Cliff Hall who as a youngster had helped him with the ferry. Cliff promised Ray he could remain ferryman as long as he wished.

Ray retired as full time ferryman at the beginning of January 2001 but has continued to be a familiar sight on the river operating the ferry. Ray is a well known Hamble character who has served the community exceedingly well over the years, appreciated by many parishioners and visitors.

If you would like to find out more about Ray's time on the ferry and the ferry's history you can buy a booklet from the ferry at a of cost £2.



Hamble £249,950

Hamble £299,950

Hamble £345,000



Hamble £425,000



Hamble £359,950



Hamble £599,950



Hamble £725,000



Hamble £674,950



Jonathan Terry Est. 1998 Independent Funeral Directors and Monumental Masons

Providing Professional and Personal Funeral Services
to Hamble, Netley Abbey, Bursledon and all areas of Southampton.

Golden Charter Pre Paid Funeral Plans
Home Visits - Memorials for all types of graves

We invite you to visit our website
www.jonathanterry.co.uk
to view our full company profile.

Office and Chapel of Rest
101 Peartree Avenue, Bitterne
Southampton SO19 7JJ
Tel: 023 8043 4444

Office and Chapel of Rest
3 College Place, London Road
Southampton SO15 2FB
Tel: 023 8023 4533

REMEMBERING FORMER CHAIRMAN BILL HARRIS



Bill presenting HPC centenary mugs to Hamble Primary School pupils


It is with sadness that we report that former Chairman of the Parish Council, Bill Harris, died at the end of January after a short illness.

Bill became a Parish Councillor in 1973 and he undertook this role until 1996. He was Chairman on four occasions. In particular he was Chairman when the Parish Council marked its Centenary in 1994 and led many of the celebrations. For many of the years he was on the Parish Council he served with his wife Nora who was also elected as a Councillor.

Bill was President of Hamble Social Club and Chairman of the Royal British Legion

at Netley. During his working career he had a number of different jobs but before he retired he worked as a Dockmaster at Port Hamble, a job that he thoroughly enjoyed. After his retirement he was a driver for Hamble Good Neighbours and he gave a great amount of time to this. Many Hamble residents were most grateful for this, particularly his supportive considerate manner and patience while they waited for medical appointments or treatments.

At this time the thoughts of the many people who knew Bill are with his family and memories of all the good things he did for our village.



• OSTEOPATHY •
• THERAPEUTIC MASSAGE •
• SPORTS MASSAGE •

Assessments & Treatments Available For :

- Back pain/sclatica • Neck pain/whiplash
- Joint & muscle pain
- Headaches • Sports injuries

For appointments call Sally on 07803 726173
sally@hambleosteopath.co.uk
www.hambleosteopath.co.uk

LJM BOOKKEEPING SERVICES

- Self Employed/Small Businesses
 - Bookkeeping to Trial Balance
 - Computerised Accountancy
 - Credit Control
 - VAT Returns
- Preparation of Final Accounts for Sole Traders
- Self-Assessment Tax Returns
 - Payroll

Holiday Cover can also be provided for

Hourly Rate Charged

Contact Lynda on 07774 790543
or Email:
ljmbookkeepingservices@gmail.com

HAMBLE, THE AMAZING PUP WHO'LL TRANSFORM A LIFE

One little puppy - brand new to charity Canine Partners - may not know it yet, but one day she will enable a disabled person to live an independent life.

Hamble Hounds Dog Training and Problem Solving have raised over £5,000 to pay for the pup and her initial training through their annual 'Barking Bonanza' dog show. The pup will be trained by Canine Partners, the charity that provides assistance dogs for people with physical disabilities or conditions that limit their everyday lives.

Hamble Hounds requested that the pup be named Hamble to honour the village that helped fund her. Annette Bowcott of Hamble Hounds said "We are delighted to have exceeded our target and to be able to fund the foundations of a new assistance dog. Its great to know that through our work with pet dogs and their guardians, we have been able to provide a puppy for this amazing charity".



Once Hamble is around 18 months old and has completed her training she will be partnered with a disabled person and provide them with practical help with everyday tasks, as well as offering security and companionship.

Canine Partners receive no government funding for the work they do so rely on donations. You can find out more at www.caninepartners.org.uk and meet them at the 2018 Barking Bonanza show at Royal Victoria Country Park on 29th April 2018.

MJM Plumbing & Heating

The complete plumbing & heating service with 25 years experience

FREE ESTIMATES FULLY INSURED ALL WORK GUARANTEED FOR 12 MONTHS
NATURAL GAS & LPG DOMESTIC & COMMERCIAL

- NEW HEATING SYSTEMS - REPLACEMENT BOILERS & UPGRADES
- 7 YEAR WARRANTY AVAILABLE ON SOME BOILERS
- BOILERS SERVICED & REPAIRED
- HEATING SYSTEMS POWERED & FLUSHED
- BATHROOMS, SHOWERS & WATER SOFTENERS
- GAS FIRES, COOKERS & WATER HEATERS INSTALLED, REPAIRED & SERVICED
- WARM AIR HEATING INSTALLED, REPAIRED & SERVICED
- UNVENTED HOT WATER SYSTEMS INSTALLED, REPAIRED & SERVICED



Gas Safe
Reg No:
14371



Oftec
Reg No:
529990



TEL: 023 8056 2504 (HAMBLE)
MOB: 07773 385946
EMAIL: info@mjmplumbing.co.uk
WEB: www.mjmplumbing.co.uk

JOIN OUR CLUB

Folland (Hamble) Cricket Club is always happy to welcome new players and officials. We have two successful and sociable teams playing in the Hampshire Cricket League on Saturdays.

The club caters for all abilities, accommodating all who wish to play. Our committee is dedicated to providing a relaxed and enjoyable atmosphere for all players and their families whilst building on the success of all our teams.

We play at Folland Park in Hamble, which is not just an excellent playing facility, but also has its own social club that helps us to create a great team spirit. We hold indoor winter nets sessions starting in late February and outdoor sessions are held at the ground from mid-April.



If you are interested in joining our club, then feel free to contact Stuart at: Stuart.Rankin@ltu.co.uk or on 07545 430548.



The Netley
Wellness
— Clinic —

Osteopathy • Acupuncture • Massage

Headaches & Migraine • Arthritis & Joint Mobility
Neck, Shoulder & Back Pain • Relaxation & Tension Relief
Improve Physical & Mental Wellbeing • Digestive Problems
Sports Injuries & Rehab • Fertility & IVF Support
Sciatica • Pregnancy, Infants & Children

07954 950855
info@thenetleywellnessclinic.co.uk
www.thenetleywellnessclinic.co.uk

29c Station Road, Netley Abbey,
Southampton, SO31 5AE




Gecko Projects Ltd

Resin Driveway Specialist

Give your home kerb appeal, tired tarmac or concrete drives transformed in 2 days

GOLD SERVICE, pressure wash, prime, fit edging system & lay resin of your colour choice from £55 per square meter

PLATINUM SERVICE, excavate drive, lay compacted crushed concrete & new edgings, lay porous sub base & resin colour of your choosing from £75 per square meter

office 02380 601061
mobile 07502297779
email build@geckoprojects.co.uk



HAMBLE CONSERVATION VOLUNTEERS

Hamble Conservation Volunteers (HCVs) undertake a beach clean on the first and third Wednesday of each month and focus their work on Hamble Common. With the problem of plastic rubbish being highlighted in the news recently now seems opportune to say how much the work HCVs undertake is appreciated. Watching them work and the care they take in picking up small pieces such as the plastic sticks of cotton buds it shows their commitment to making our environment better.

On the day the front cover picture was taken 14 volunteers took part, some not even from Hamble such as a lady and her dog from Bursledon. They cleared litter along the beach from Hamble Point to past the Ensign Way slipway, as well as other parts of Hamble Common particularly along the road where rubbish such as beer cans had been thrown out of car windows.

Last year HCVs spent 341 hours beach cleaning, collecting 234 bags of litter which

is equivalent to 1.16 tons of rubbish. As well as this they spent 346 hours on task days such as putting up bird boxes, clearing scrub, improving footpaths and surveying wildlife. At least once a year they take part in a national beach clean survey and list all the different items they pick up and it is amazing and disappointing to see the amount of plastic they record.

On behalf of all who enjoy the Common and surrounding areas - thank you very much Hamble Conservation Volunteers for all your work on improving our village and its shores.

HCVs are always looking for more volunteers so if you are interested in helping please see hambleconservationvolunteers.org.uk or telephone Philip Rawlinson on 07810 435 138.

If you are interested in setting up a new group to improve your area such as Westfield Common, please contact the Parish Clerk (see page 1 for details).

The final scrub clearance of the Common this winter will take place in March.

Thereafter we need to avoid disturbing nesting birds and will not return to this task until the autumn. We have made great progress this winter and hope to conclude on a high note so please join us if you can.

In April we turn our attention to the Common's many paths maintaining access by repairing damage caused by the winter weather and high tides. Some of the tasks can be arduous but there are roles for a wide range of agility and strength.

Beach and Common cleans are also vital, made necessary by the actions of a small number of people who do not seem to appreciate the damage their behaviour has on the Common and its wildlife.

BEACH CLEANS

Wednesdays 7th and 21st March.

The next conservation task is:

SCRUB CLEARANCE

Wednesdays 14th March.

Meet 10am Hamble Point Car Park.

Please wear clothing suitable for the weather on the day.

We provide all equipment but welcome contributions to the tea fund.

To book your place for this event please contact Philip:

07810 453 138

hambleconserve@btinternet.com



HAMBLE
CONSERVATION VOLUNTEERS

Hamble's Local Policing Team



Greetings from your local neighbourhood policing team.

I am Sergeant Matt Moss and I am the Sergeant responsible for

the parishes of Bursledon, Netley and of course Hamble.

I have been with Hampshire Constabulary for almost 17 years and have served mainly in the east of the county in a number of roles. I am married and we are lucky to have a beautiful 1 year old daughter called Jennifer.

Your dedicated officers are PC Robin Tebb and PCSO Phil Davenport. Both are experienced in their roles and are committed to providing you with the best service they can.

Our priorities are set by you through your direct feedback to us, through your parish councillors and through our crime reports. We also have wider district and force level priorities to work on, however your officers' first priority is Hamble. Phil and Robin are backed up by a team of 2 further PCs and 3 further PCSOs on our team, with access to a wide range of other resources including our response teams, investigation teams and marine unit to name just 3.

Our current priorities in Hamble are youth nuisance, with particular regard to Mount Pleasant and College Playing Fields and the surrounding roads, and the prevention of thefts from motor vehicles which have been prevalent in other areas of the district.

- Sgt 3554 Matt MOSS



My name is Robin Tebb and I have been in the Hampshire Constabulary for just over 27 years. During that time I have undertaken

numerous roles including frontline response policing, community beat policing, school liaison work and Youth Offending Team. I have worked in Cosham, Gosport, Southampton, Hythe, Winchester and currently Hedge End.

I am a proud Hampshire "Hog", having been born and brought up in Portsmouth and have always lived

somewhere along the South Coast.

Policing today is a different animal to what it was when I joined, thanks in part to advances in technology, growing social media usage, mobile phone availability and a better standard of living. As a result, I have witnessed many changes within the Constabulary as we try to keep up with the ever evolving criminal world.

Nevertheless, the basics of policing remain the same, to "protect life and property". I will endeavour to use all my experience and the array of resources available to police my new beat of Hamble.

- PC 2007 Robin TEBB



I am the Hamble PCSO and have worked in this role since joining Hampshire Constabulary in 2014.

My work involves supporting partner agencies such as the Parish Council & Harbour Master over local issues with a view to reducing risk. This work complies with the force priority of 'Building partnerships that enable a better public service'.

As mentioned by PC TEBB, there have been many changes and a large part of my role is now focused on Safeguarding for the vulnerable members of our community. This follows one of the Hampshire Force's Policies 'Identifying and protecting those that need our help'.

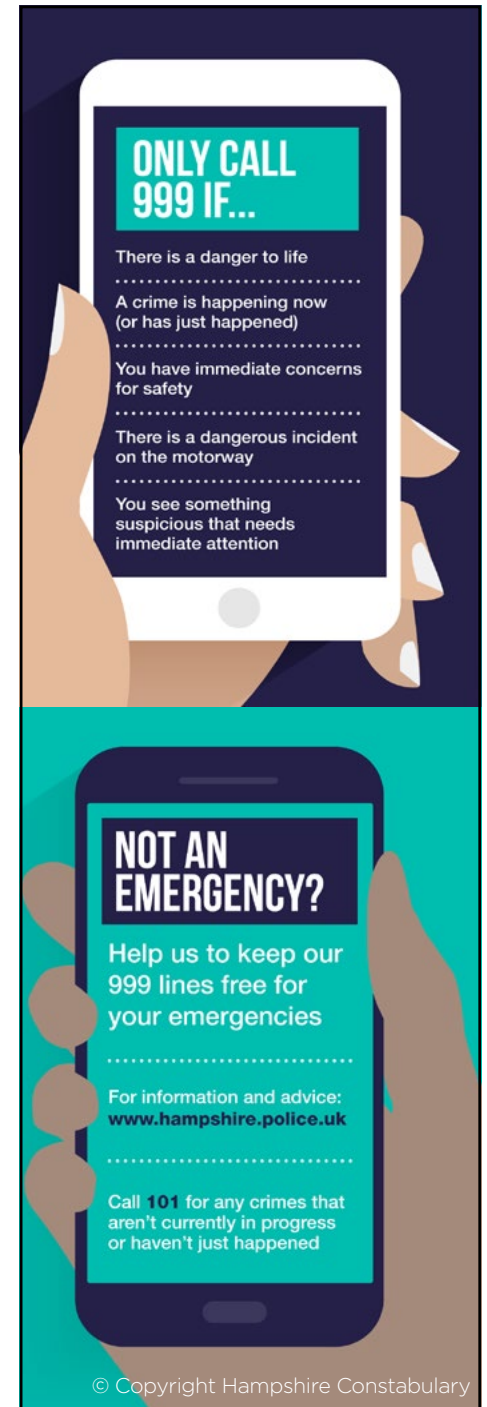
I will also be working alongside PC TEBB to assist with another force priority of 'Tackling Crime & Offending'.

I look forward to serving the community while dealing with the challenges ahead.

- PCSO 15737 Phil DAVENPORT

We can be contacted by email on: eastleigh.police@hampshire.pnn.police.uk

If you are not already a member of HAMPSHIRE ALERTS please register as it allows us to send you crime updates and information to protect you, your community and your property: www.hampshirealert.co.uk





Need **free** legal advice?

Want services with **no hidden costs**?

Prefer to know about **fees upfront**?

Ask Eric!®



0800 083
2820



www.askeric.co.uk

G. Grogan Plumbing & Heating Ltd

Gas Servicing & Central Heating
Boilers – Installation & Servicing
Solar – Installation & Servicing

DOMESTIC & COMMERCIAL

T: 01489 691999
M: 07887 757979
E: the.plumber@ntlworld.com



REPOINTING & RAKING OUT

All types of pointing with minimal dust
Repointing and wall tie specialist



Nick Goff

Hamble

Southampton

07771964235

Nickag67@aol.com



S. LINTON DECORATING

Over 20 years experience
No obligation quotes and advice given
Good knowledge of the best methods and materials
Work carried out in a clean a tidy manner
Reliability assured
Fully insured

02380 230 588
stuartlinton75@gmail.com



The
Wessex Cancer Trust
Spring Sale

Friday 23rd March 2018 - 10.30am - 3pm

£2.50 Entry with Bucks Fizz
At: Wessex Cancer Trust,
Chandler's Ford Cancer Support Centre,
91-95 Winchester Rd SO53 2GG

Plants, Cakes, Bric a Brac, Crafts,
Aromatherapy oils and chair massage,
Fair trade jewellery, Books, Raffle. Refreshments also available.

 WESSEX
CANCER TRUST 023 8051 6576
Charity Reg: 1110216

20%
DISCOUNT FOR
TAKE-AWAY ORDERS



Contemporary Indian Cuisine

4-7 High Street, Hamble, Southampton SO31 4JE

Tel: 023 8045 2285

Tel: 023 8045 4477

Opening Hours:

7 days a week - 5:30 to midnight

All major credit cards welcome

Free Car Parking

www.cinnamonbayhamble.co.uk
reservations@cinnamonbayhamble.co.uk

VISIT OUR FACEBOOK PAGE

BOTOX • FILLER • FACIAL PEELS
CRYOPEN
(FREEZING SKIN TAGS/WARTS/SUN SPOTS)

Skin Dr
AESTHETIC TREATMENTS
BY A
GP SPECIALISED IN
DERMATOLOGY

Book a Complimentary Consultation to find out more

The Salon, 2 The Square, Hamble
02380 458458
www.facebook.com/SkinDrClinic
skindrclinic@gmail.com

Bespoke Dining
Prepared by us
Presented by you

For all your local catering requirements including
Dinner Parties, Afternoon Teas, Office Lunches,
Christenings & Funerals

T: 023 8045 5418
M: 07980 261648
E: morven@bespoke-dining.com
W: www.bespoke-dining.com

Dignity F.C. HUGHES
FUNERAL DIRECTORS

46 St. Johns Road, Hedge End S030 4AG
Tel: 01489 782404

- Our staff are at your service 24 hours a day
- Memorial advice and products available
- Funeral Plans Available

Members of The National Association of Funeral Directors

Part of Dignity plc.
A British Company

www.dignityfunerals.co.uk

ADVERTISE IN

Hamble-le-Rice
VILLAGE MAGAZINE

vmag@hamblepc.org.uk

Need a local venue for your class?

60 People Capacity
Up to 4 Hours Only £35
LARGE FREE CAR PARK

THE ROY UNDERDOWN PAVILION, HAMBLE
The perfect spot to meet indoors or outdoors

Call 023 8045322 or email asstclerk@hamblepc.org.uk to book your hire

PARTIES - CLASSES - MEETINGS - BBQs

HAMBLE-LE-RICE FLOWER CLUB



Our February meeting was well attended by 24 members. This was a practical session, entitled 'Small World.' For many of us this was a new experience. The dimensions were tricky but some of the results were amazing! We were well advised by Pat Maple, our resident tutor and other experienced ladies within the group, so a new skill hopefully has been acquired!

Many of our new members have never had the opportunity to learn the basics of flower arranging at an Evening Class or in such educational setting. Consequently, they feel out of their depth to tackle many arrangements. It is with this in mind that we are attempting to start a Beginners Class once a month which will be hosted and taught by various group members. There

will be a small charge to cover expenses. For more information please feel free to contact either Sheila on 02380 453718 or Judy on 02392 554157.

Monday 12th March

Our AGM is at 2pm. Lunch is available at noon at a cost of £10. Please contact Judy if you haven't already booked your lunch!

This year could be busy! So watch out for posters etc!

1. Pearl Anniversary Thursday July 26th
2. Winchester Cathedral Flower Festival Early September
3. St. Andrews Church Flower Festival November 9th – 11th

The Hamble Le Rice Flower Club consists of a friendly group, mainly but not exclusively of ladies, who meet on the second Monday of each month at 2pm in the Hamble-Le-Rice Memorial Hall.

Visitors welcome at all Club events, just turn up or if you require more details/tickets:
Rosemary Dorman, Secretary: 02380 452385
Valerie Pritchard, Chairman: 02380 455952

LOST AND FOUND

Items which have been found locally are often handed in to the Parish Office - one of which recently has been a ring. If you've lost anything, please log it with the Parish Office so that we can reunite you with it should someone hand in to us.

Our opening times and contact details can be found on page 1 of the Magazine.





Expert building and windows, all you need under one roof

With a **100% customer satisfaction** rating last year for windows, doors and conservatories

This **reliable local family** run firm has 20 years experience in the building trade and offering a high quality finish. Services include:

Extensions and New Build
Windows, doors and
conservatories (with 10 years guarantee)
Decoration and Maintenance

No job is too small, please contact us for a friendly, honest, value-for-money quote and advice

01329 237715

www@kijnhomeimprovements.co.uk



R&M

Proud members of
Checkatrade.com
Where reputation matters

PROPERTY MAINTENANCE LTD

All External and Internal work undertaken

Specialising in:

- All aspects of Roofing
- Pitched/Flat roofs
- Slate, Tile & Lead work
- UPVC Facias and Guttering
- Roof Windows
- Brick work including Chimneys & Re Pointing
- Patios & Decking
- Laminate & Hardwood Flooring

- Fully Insured
- Trading Standards Approved
- Member Of Checkatrade
- Free Quotations
- Friendly & Reliable

With over 25 years of experience within the Construction Industry

Contact Ray on: **07757 808 290**
Or Email: randmpropmain@talktalk.net

HAMBLE LADIES' GROUP

Our AGM in January 2018 saw all Committee Members, Chairman and Secretary re-instated. I guess we must be doing something right after all.

In February, Judy Theobald came along to chat to us about 'Life in general and other problems'. Judy kept us entertained by talking to us about her life in such a comical way that we practically laughed all the way through her talk. She spoke about how she knew she wanted to be a journalist from the age of 7 and eventually achieved her goal after many years of doing many other jobs. She explained that at one time she wrote a poetry column and does in fact still write poetry. She read a few of her poems which were very amusing and very topical with reference to St Valentines Day

We thoroughly enjoyed her talk and it certainly brightened up an otherwise miserable evening weather wise.

We were at full strength with members and had a couple of new members join up

and a few visitors.

Our group seems to more popular than ever. If you've not been before why not come along. We are very informal and our meetings are always interesting.

-Bobby Conduit

Our Programme is as follows:

Tuesday 13th March:

Mathew Whitfield - Navy's Top Gun

Tuesday 10th April:

Rachel Hampton - Mayfield Nursery

Tuesday 8th May:

Philip Hoare - Author

Tuesday 12th June:

Social Evening - Celebrating 25 years

Wednesday 15th August

Our outing is a trip to Goodwood House where we get a tour of the house and high tea which sounds rather grand.

New members are always welcome - our meetings start at 7.30pm and are held in the Priory Centre, Hamble, why not come along and join us.

ALICE RELIES ON LOCAL VOLUNTEER SERVICE

"I have always been independent but then as my eyes deteriorated I had to give up my car. This was a bit of a blow as I had frequent doctors and hospital appointments. This worried me as my mobility isn't all that good either. Then a friend told me about Good Neighbours and I decided to ring them when I had my next appointment. It was so good, and took a lot of worry from my shoulders knowing that a driver would come and pick me up and take me to the General, he was so kind and helpful and sat and talked to me in the waiting room, to stop me worrying. I have had one or two trips to the doctors and the hospital now and they couldn't be nicer, the volunteers are always so willing to help. Like many

others in the village

"I don't know what we would do without them". - Alice (name changed to protect service user's identity)

We are now looking for more volunteers to enable Good Neighbours to carry on and keep helping people like Alice. Please consider if you could spare an hour or two a week to help. You don't need to be a drivers as we also need people to work behind the scenes with the organisation, giving as much or as little of your time as you choose. For more information and to discuss how you could help please phone the Co ordinator on 0845 6430371. Looking forward to hearing from you.

"Attention Club Members"

HAMBLE CLUB

BEAULIEU ROAD, HAMBLE
Telephone: 8045 2213



**THE
FAMILY CLUB**
Membership Available

- LIVE MUSIC
- BINGO - Wednesdays, Sundays
- Small/Large Function Room Available
- Catering can be arranged
- showing all your favourite games on Sky Sports
- Free WiFi

BADGER CLEANING SERVICES

Carpet & Upholstery Cleaning

A Hamble based Company
specialising in cleaning
carpets and upholstery



Please phone for a quote.
023 8178 7229 / 07780 652933



SOLENT GARDEN SERVICES LTD

ESTABLISHED 1973

www.solentgardenservices.co.uk

Based in Hamble since 1973

Tel : 07787594682
Email : robwoodh01@msn.com

- Garden Maintenance
- Regular Mowing
- One Off Mowing
- Tree Surgery
- Hedge Cutting
- Fencing
- Landscaping
- Design Service

Proud members of
Checkatrade.com
Where reputation matters



YOU CAN NOW USE



TO PAY FOR PARKING AT THE FORESHORE CAR PARK

See the signage in the car park for more information and instructions.

HAMBLE LOCAL HISTORY SOCIETY

It sounded a familiar story about a ferry, America's Cup crews and Spitfires however it was not about Hamble but Itchen Village. Cheryl Butler told the story of the village that grew around a ferry crossing point, along an important route to Southampton. The village was small with just a handful of families - the Diapers, Jurds, Parkers and Dibles.

Cheryl's interest started in this topic when she found a family log by Tom Diaper which led her to research the full story of the village from which he came. Peartree Green was part of Itchen Village and where Queen Elizabeth I planted a pear tree there. The area was also known as St Mary Extra because a chapel was built there in 1620 with its mother Church being St Marys in Southampton. In later centuries a few large estates with big houses were established further inland from the ferry.

The ferry and fishing were important sources of income for the waterside families. The ferry was rowed across the river and nearby on the Itchen side was the Royal Oak pub. There were a number of reports of delays for passengers because the ferrymen preferred to stay in the pub. It was not just ferrymen that rowed the ferry but the women of the village too. Famous people such as King Charles II, Samuel Pepys and Jane Austen used the ferry.

Despite the ferry- and fisher-men objecting and signing a petition, eventually a steam floating bridge chain ferry was introduced in 1836. Some of the original ferrymen were employed to work on the new floating bridge. At this time the fishermen were developing their own type of fishing smack to suit the local conditions and obviously it was known as an Itchen Ferry boat. This led them to racing these boats amongst themselves and at local regattas and they became experienced yacht racing crews.

When the large racing yachts, including

the J Class yachts, needed crews some of their owners employed these experienced yacht racing Itchen men. One of these owners, Sir Thomas Lipton, employed them on his yacht named Shamrock. He appointed Captain Alfred Diaper as skipper of his yacht in a challenge for the America's Cup and Alf chose the crew mostly from his family. The crew were given a uniform and a set of sailing clothes. They were the professional crew that sailed the yacht to America and took part in the practice races beating the other yachts. When it came to the America's Cup itself it was a Sir Thomas Lipton gentleman crew that raced and lost.

Over the racing seasons Captain Diaper won enough prize money to build himself a house in Itchen Village. While their husbands were away sailing abroad the women ran the village. When the racing crews got old and had to retire many of them became publicans. Cheryl told a number of sailing stories of Itchen skippers and crewmen one being about taking a yacht to Australia where the crew ran out of water and had to kill a young crewman to survive.

Itchen Village eventually became part of Woolston as it developed with Thornycrofts shipbuilders and Supermarine aircraft manufacturers setting up there. The fate of the village was sealed in 1940 when the Germans targeted and bombed the Supermarine aircraft factory which was making Spitfires. The factory was destroyed along with most of the village. The troops used the bombed-out Itchen Village buildings to practice and prepare for the D-Day invasion. Although a few houses remained, this was the end of Itchen Village as it was not rebuilt after the war.

A fascinating story told by Cheryl in a very interesting way and the Society had many visitors from the Itchen Village area who asked her many questions at the conclusion of her well-illustrated talk.

ROOFCARE

- Guttering Repairs: Cleaning / Clearing / Unblocking
 - Fascia boards repainted or UPVC renewal
 - Gutter guards or 'Hedgehogs' fitted
- Main roof repairs: Slates / Tiles / Hips / Ridges / Vents.
- Chimney Repairs: Lead-work replacement / Repointing etc

NO JOB TOO SMALL: 15% OAP REDUCTION: FREE ESTIMATES

Please ring Les: 02381 781 364

FROM THE COUNCIL'S RECORDS

100 YEARS AGO - Parish Council Elections

The Local G. Board notified the Council that the provision of the Parliament & Local Government Act 1917, deferred the Election of Parish Councils for a further period of 12 months from March 1918. **MARCH 1918**

100 YEARS AGO - Nuisance

A letter was read from Lt. Col. Crichton drawing the Council's attention to the nuisance committed by the Tenant of No.1 Copperhill Terrace. Several Councillors verified Col. Crichton's statement that the District Council be asked to take immediate steps to abate the nuisance. **MARCH 1918**

75 YEARS AGO - Lower Hamble Allotments

... Air Service Training Ltd. drawing the Council's attention to that the outhouses on the Allotments east of E Block of Sleeping Quarters appears to be in the process of demolition, they would be glad if the Council would investigate ... Several Councillors stated that the damage referred to was done by the gale of wind & not by the tenant ... **MARCH 1943**

75 YEARS AGO - National Savings Movement

A letter was read by the Chairman together with a Certificate presented by the Lords of the Admiralty, to the Civil Parish of Hamble to commemorate the adoption of H.M.S. Rover during Warship Week 1941 ... **MARCH 1943**

50 YEARS AGO - Scouts & Guides

... The Scoutmaster had written to Mr Marsh, County Education Officer, asking if the C.C. would sponsor a coach to take the Scouts, Guides & Brownies into Southampton Swimming Baths once a week for swimming instructions ... **MARCH 1968**

50 YEARS AGO - Postmaster Retiring

It was brought to the notice of the Council ... that Mr E. Burnett was retiring as Postmaster and it was thought that Mr M. May (Mr Burnett's son-in-law) may be taking over the Post Office. **MARCH 1968**

25 YEARS AGO - Correspondence

A letter from a parishioner regarding microlight flying from airfield ... complained regarding noise and proximity to the residential area ... It was thought that the turf stripping operation would limit the area which could be used ... **MARCH 1993**

THE ABOVE IS AS RECORDED IN THE ARCHIVES (IMU)

The Gables Care Home



CARE, COMFORT & COMPANIONSHIP

6th most recommended care home in South East England 2015 as awarded by carehome.co.uk

Full time activities & entertainments co-ordinator

Visit www.carehome.co.uk to view recommendations

For more information please call Heather or visit us at anytime

- Residential Care
- Respite
- Day Care
- Dementia Care

13 St. MARY'S ROAD, NETLEY ABBEY

Tel: 023 8045 2324



DATES FOR YOUR DIARY IN MARCH

Tuesday 6th

Westfield Common Site Meeting

The Asset Management Committee will be on site to consider how to prevent fly tipping and to improve the area.
9am, 1st car park at Westfield Common

Tuesday 6th

Bursledon and District Gardening Club



A talk by Gerald Ponting "Pride of Madeira".
Competition: Up to 7 Floating Hellebores.
7 for 7.30pm,
St. Paul's Church, Pilands Wood.
£2 per meeting for visitors.
Refreshments, Raffle & Topical Gardening Tips.
Further information:
02380 402986

Monday 26th

Hamble-le-Rice Parish Planning Committee Meeting

7pm,
Roy Underdown Pavilion

Listing of an event does not constitute endorsement.
Details believed to be correct at the time of publication.

Monday 12th

Hamble-le-Rice Parish Council Meeting



All Council meetings are open to the public.
Each agenda includes a Public Session where members of the public may speak on any matter.
7pm,
Roy Underdown Pavilion

Thursday 22nd

Local Area Committee Meeting



Responsible for local policy, local matters including planning applications and planning enforcement.
6pm, Hamble Primary School

Tuesday 27th

Toddlers Story Trail: The Very Hungry Caterpillar



Toddlers story trail around the Park. Please wear wellies and bring a waterproof coat.
Suitable for children 4yrs and under. Price

Sunday 25th

Spring Craft Fair



A special craft market to kick start the season.
Entry prices include both the museum and the craft fair. A good chance to buy unusual Easter presents.
Special one day prices: Adults £3, Children £1
Free parking, cafe open.
11am-4pm,
Bursledon Brickworks

Regular Events

Weekly	What	Where
Monday	Monday Club	1.30pm, Hamble Club, Beaulieu Road
Monday (except Bank Hols)	Hamble River Singers Community Choir (Contact basschickbev@gmail.com)	7.30pm , HRSC Rooms
Monday	U-Tone Circuit Training	8.15-9.15pm, Memorial Hall (Rear Hall)
Monday	Forever Fit: 50+ fitness exercise to music. £4/session. (Contact Julie: 07952 983 349)	10.30 - 11.30am, Roy Underdown Pavilion.
Tuesday	Parent & Toddlers Group	9.30-11.30am, Memorial Hall
Tues & Thurs	Pilates	(Tues 12-1pm) (Thurs 10-11am) Memorial Hall
Wednesday	Yoga	10-11.30am, Memorial Hall
Wednesday	Body Control Pilates (Contact: Caroline 07803 302654)	9am-10am, Roy Underdown Pavilion
Wednesday	Chairfit: 50+ Seated exercise to music. £3/session. (Contact Julie: 07952 983 349)	11.15am-12pm, Roy Underdown Pavilion.
Wednesday	Cherubs (Contact: Father Graham Whiting 023 8045 2148)	10.30am - 12pm, St. Andrews Church.
Wednesday	Acting Up For class times contact: 07519 754829	Memorial Hall
Thursday	Walking Netball	9-10am, Hamble Sports Complex
Friday	Village Market	Memorial Hall, 9.30-10.45am
Bi-Weekly	What	When
6th & 20th	St. Andrew's Cafe @ The Priory Centre	10.30am-12.45pm
Monthly	What	Where
2nd Monday	Hamble Flower Club	Memorial Hall
4th Monday	RAF Association Itchen & Hamble branch (Contact: Steve Rawlings 02380 740771)	12pm, Hamble Club
1st Tuesday	Bursledon and District Gardening Club	7pm, St Pauls Church, Bursledon
2nd Tuesday	Hamble Ladies Group	7.30pm, Priory Centre, St Andrew's Church
1st & 3rd Weds	Hamble Conservation Beach Cleans	10am, Hamble Point Car Park
2nd Wednesday	Hamble Conservation Task	10am, Hamble Point Car Park
4th Wednesday	Informal Bereavement Support Group (Contact: Heather Smith 02380 452998)	2pm-4pm, The Priory Centre
Last Saturday	Place 2B Café (Coffee, Cake & Conversation)	10am-12pm, Priory Centre

Hamble-le-Rice

VILLAGE MAGAZINE

2018 ADVERTISING RATES

RATES ARE DISPLAYED EX VAT.
ALL RATES ARE SUBJECT TO VAT AT THE CURRENT RATE OF 20%

Size (width x height)	One off (PER ISSUE)	Annual (10 ISSUES)
EIGHTH PAGE 63mm x 45mm	£15.13*	£91.96
QUARTER PAGE 63mm x 92mm	£28.30	£175.56
HALF PAGE 128mm x 92mm	£57.75	£351.12
FULL PAGE 128mm x 186mm	£114.92	£703.40
INSIDE COVER FULL PAGE 128mm x 186mm	£120.08	£735.00
BACK COVER FULL PAGE 128mm x 186mm	£135.71	£877.51

* Minimum 3 months.

Annual invoices are issued in advance.

The Parish Council publishes 2,500 copies of each issue and it is delivered to all households and businesses in Hamble village.

The current month's magazine is displayed on our website at:
www.hambleparishcouncil.gov.uk

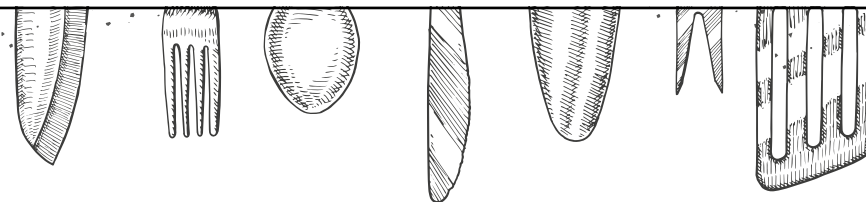
There are 10 editions of the colour magazine per year.
August/September and December/January are combined.

Please supply your full-colour artwork for your advert in either **jpeg/jpg** or **PDF** format.
Hamble Parish Council does not offer a design and set up service.

FOR GENERAL ADVERTISING ENQUIRIES AND TO BOOK:
vmag@hamblepc.org.uk / 07805 012 794

FOR INVOICING OR PAYMENT QUERIES:
asstclerk@hamblepc.org.uk / 023 8045 3422

Whilst every effort has been made to provide up-to-date rates, these may be subject to change.
Please refer to www.hambleparishcouncil.gov.uk for the latest rates.



WEEKLY EVENTS

MONDAY NIGHT

#MEATFREEMONDAY – Sponsored by



Join us for supper as we create vegetarian and vegan masterpieces using fresh seasonal veg supplied by Riverford. Plus, we'll have a box of veg to giveaway each week, so you can cook up a storm at home.

TUESDAY NIGHT

STEAK & RED

Enjoy a succulent 7oz rump steak with a glass of red wine for £14, or share a carafe and two steaks for only £35.

WEDNESDAY

PIE NIGHT

We love pies and you will too! Enjoy our assortment of freshly made pies for just £12. What's not to love?

THURSDAY

BURGER & BEER NIGHT

Premium handmade burgers matched with a pint of Maltsmiths American Style IPA or a small glass of house wine for just £13. We serve vegetarian and meat burgers.

FRIDAY

SAUSAGE & STICKS AND THE MEAT DRAW

Enjoy a bowl of local sausages for just £3, or just £1 for loyalty card members, available between 5pm-6.30pm and join us for our weekly meat draw at 7pm.

SET LUNCH MENU

MONDAY – FRIDAY

Two courses £15 | Three courses £18

SUNDAY

Two courses £18 | Three courses £20

BOOK NOW 023 8045 3000
WWW.BUGLEHAMBLE.CO.UK



Sales & Lettings

Trustworthy Property Management
Leaders Knowledgeable Professional
Experienced ARLA Qualified Experts
Local Lettings
Branch Network SafeAgent Proactive Reliable Local
Friendly Specialists
Successful Established Helpful

L | LEADERS

Leaders - Your trusted local property experts.



01489 858347



leaders.co.uk