

# **BLEASBY NEWS**



## **Govertton in Snowy March**

**APRIL 2018**

## **WELCOME TO THE APRIL EDITION OF BLEASBY NEWS**

Welcome to the April edition of Bleasby News. You will no doubt be aware that there are two big events coming up later in the year which we hope will bring the village together in celebration and thanksgiving. Planning is in hand for Royal Wedding celebrations in May and well advanced for the installation and commemoration of the aircrew memorial in September. Although spearheaded by Ken Ogilvie whose determination to see this special new memorial to conclusion is breath-taking, many individuals and organisations are there in the background lending their support and encouragement. The relatively new Events Group is leading the planning for the Royal Wedding get-together and this also involves the cooperation and support of other organisations.

This kind of cooperation and support has long been the case but it is evident that village organisations, including the school, are working more closely together than ever, pooling resources, financial, material and human. On a small scale this shows itself in the success of the monthly Friendship Coffee Mornings, begun as a response to a WI resolution to offer a hand of friendship to the lonely and housebound, supported financially by the Village Hall Committee so that no charge is made, and organised by members of Bleasby WI, the Village Hall and the Church working together. The parish plan steering group, created following the initiative of the Parish Council in conducting the Parish Plan project has injected new life into cooperative working to make the most of the whole parish's resources. We hope that many of you will want to be involved and be able to enjoy the fruits of all this work in the coming months. If you are not involved and would like to be, whether you have particular skills or just a willingness to work, please be in touch.

As ever, we look forward to receiving articles, photographs, ideas and news etc so please send them for the June edition by Friday, May 18<sup>th</sup>.

*Your editors, Rachael and Barbara*

## **THE PARISH COUNCIL CHAIR'S REPORT**

### **"Show Me the Way to Go Home!"**

*Where are we going, who is taking us there and who is paying?*

These questions will be very much in the mind of all villagers and yet each age group in its specific circumstances will be looking for different answers. In the case of the Parish Council, it wants to help take everyone forward in a direction that finds broad consensus and at as little cost as possible. It also wants to take the whole community forward, irrespective of age, ability or background.

In respect of cost, my article in the last edition of Bleasby News focused on the Parish Council's Annual Budget and how comparatively little we have to meet administrative, maintenance and developmental costs. Having just received your Council Tax breakdown you will see that there will be minimal addition to the PC coffers but, due to planned accumulated reserves, there will be sufficient funding for this coming year's programme of development as well as all ongoing costs, but next year. . . . ? It is going to cost us more!

Respecting direction, this is being formulated from your own feedback on the Parish Plan Questionnaire and being very capably addressed by the wide-ranging makeup of the Steering Group. The actual course taken and the momentum given to it will be largely in the hands of you as residents.

The emergence of community groups bound by common interests and promoted by Parish Plan objectives is now becoming a reality of the PC's long-held strategy of public engagement. A marvellous example of what can be achieved, both purposefully and incidentally, has been demonstrated by the self-initiated Telecom Mast Group which has, with the application of local expertise, enthusiasm, support and dogged determination, been able to achieve the very best outcome for the parish as a whole by securing the location of the most effective, least intrusive communication mast with all its benefits – but without its drawbacks! Incidentally the whole process has prompted new friendships, camaraderie and, of course, community cohesion.

Similarly, groups wanting to develop Bleasby's social life, wishing to ensure a safer village and wanting to promote enjoyment of our local countryside have already emerged with the stimulus of the Parish Plan and its Steering Group. The Events Group is up and firing on all cylinders, having already supported Christmas events and currently preparing for a Royal Wedding/Maytime celebration as well as for other events this summer, along with the Aircrew Memorial Focus event on 1<sup>st</sup> September. The Footpaths and Countryside Group has formulated a whole range of local walks and activities that will be tailored to suit all ages, groups, interests and abilities beginning after Easter. Whilst the Neighbourhood Watch Group hopes to involve every member of the parish, young, old or housebound (even if in only a small way) in an epic '800 pairs of eyes in surveillance' which will help secure the safety and security of us all.

As you see from the above it is you that should be taking us, in your own way, into a better and more rewarding future for our village community. However, many of our stalwarts and long-term supporters, "pillars of society" and "public spirited" community volunteers and advocates are of advancing years and anxious for the next generation to become part of the necessary groundworking for the future of Bleasby. There are many individuals, some still living in the village, who have in the past devoted a considerable proportion of their lives to the parish and to the welfare of its people. We should not forget what they have achieved – what an honour to be able to build on their foundations.

The parish owns a number of major assets – the Glebe Field, the Jubilee Ponds and, once final documents are signed and sealed, Ferry End at Hazelford, all of which are key locations that the parish is all the richer for and which have been acquired, developed and maintained by committed and determined parishioners past and present – people not to be forgotten.

The Jubilee Ponds have now been in the ownership of the PC for 40 years and, with the fishing rights separately owned, has often proved a conundrum in management terms with different interest groups but compromise and good sense have usually prevailed – the “common good” has to be the deciding factor. There will be changes afoot as four of the key members of the management group have decided that it is now time to step down. Three of them have served on this committee for over 20 years and the fourth has, since retirement, devoted all his spare time, strength and energy to caring for the Ponds. Thank you most sincerely Elaine, Jenny, Joyce and John for all you have done and achieved. Looking to the future, there will be a meeting for all those who expressed their interest and support for the Ponds in the Parish Plan Questionnaire at which we will plan a continuing and positive way forward for our Jubilee Ponds.

Finally, please feel welcomed and encouraged to attend meetings and hopefully join any of the emerging Parish Plan Groups to ensure that you too have had a hand in making Bleasby not just a place to live but a home to return to.

*Peter Cast, on behalf of Bleasby Parish Council*

### **FROM THE REVD PHIL**

Dear All,

I don't play much golf but I have heard of Tiger Woods, how brilliant he was in his early career but then fell from grace in an extraordinary way. I now hear that he is back playing well and increasing viewing figures for golf watching exponentially. He has a second chance, an opportunity for a new start. He can redeem himself. It's a hard question whether people we know should have that opportunity. Do they want one? Can they live up to it? Can we trust them? Or more to the point could I live up to it, be trusted, and change the narrative of my own life? If someone in public life makes a mistake she/he is vilified, apology scorned and “resign” shouted from the social media airwaves. Is there an element of hypocrisy in this? Should we discard every person as soon as something goes wrong? I'm not sure people ‘deserve’ a second chance, but I feel passionately that everyone can have one. Easter time for me is all about the possibility of a new start. Things can be changed, turned around and wonderful things achieved after an ‘end’ or a ‘failure’. I hope Tiger Woods can do it, even if not I'm glad he has the chance.

I'm grateful too for the new starts, being surprised by love and the avoidance of ruining a good walk in the countryside by a round of golf.

*Happy Easter, Phil*

PS Thank you for the good wishes expressed by many on hearing about my good news/new start as elsewhere in these pages.....

### For your diary

The Benefice 'Labyrinth'.... a journey of reflection and prayer to walk through is being laid out in Holy Trinity, Rolleston, between 24<sup>th</sup> March and 7<sup>th</sup> April every day from 10am until dusk. Each church in the Benefice has created a prayer 'station' following the theme of Holy Week, with a final station for Easter Sunday created by pupils from Bleasby School. There will be instructions as to what to do. You are warmly invited to have a look and try it out.

Good Friday Walk.....starting at Upton Church at 10am on Friday 30<sup>th</sup> March. Visiting Rolleston (11am), Morton (12pm) with lunch, Bleasby (1.45), Thurgarton Methodists 2.45 and hot cross buns at Hoveringham (3.45). The walk to be enjoyed for itself with opportunities to join in a reflection at each church on the way. The whole walk of about 8 miles.

Women's Refuge...The 7 churches of the Benefice continue to collect items for the Newark Women's Refuge, or turn gifts into £5 Asda tokens. Leave items at any of the churches.

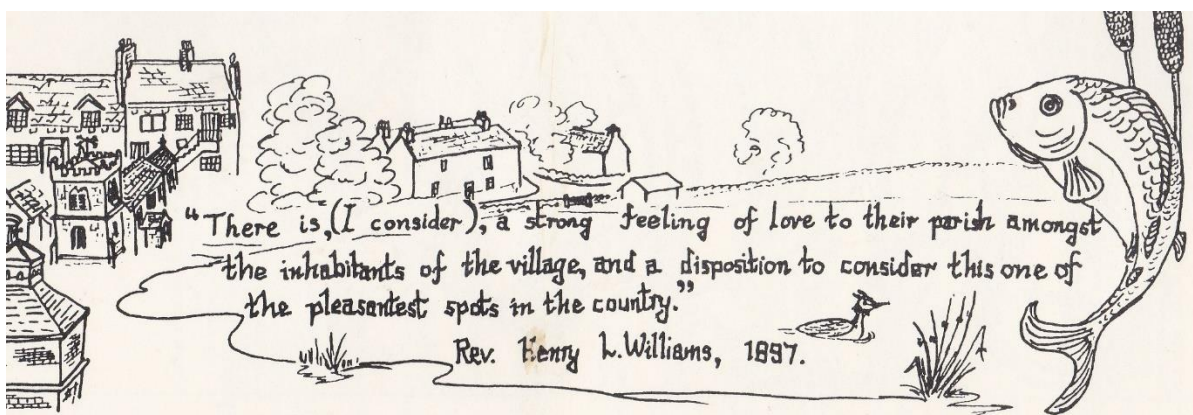
Bungoma Calling...thank you for those who have contributed to the Orphanage we support in Bungoma, W Kenya. The thirty or so children really appreciate their new chance. Two people from the Benefice are visiting this August.

phil\_07@btinternet.com - [www.westtrentchurches.co.uk](http://www.westtrentchurches.co.uk) – 07720010066

The Revd Phil can be contacted as above or via the administrator for the West Trent Group: Paula Carlin on 07419 176021 or at [beneficeofwesttrent@gmail.com](mailto:beneficeofwesttrent@gmail.com)

## **WELCOME TO OUR NEW RESIDENTS**

We are pleased to welcome the following newcomers to Bleasby: Cynthia Marsh to Manor Close; Jo, James, Henry (6) and Arthur (2) plus Dudley the dog to Elmore's Meadow; and Rosie and Sam Sparkes to "Studio M". May you all be very happy here.







*Congratulations to  
The Revd Phil and Mrs Veronica White*

*Married 27<sup>th</sup> February 2018*

*Wishing you both every happiness now and  
in the future.*



### **BLEASBY WOMEN'S INSTITUTE NEWS**

In February Helen Crowder came to talk to us about the work of the Associated Women of the World (ACWW), the global arm of the WI. Over many years small projects in various parts of the world have been supported by the WI, the focus being on women being empowered to bring about change and improve lives in their community. In the early days these projects were mostly about bringing clean drinking water to communities that had none but now include health, education, horticultural

and animal husbandry projects. Our WI always has a collecting box which members are encouraged to contribute to at each meeting. Many of us at the meeting were inspired to do more in support of this vital work. Members are generally well-informed about the work done locally and nationally by the WI but not so knowledgeable about projects further afield. On March 20<sup>th</sup> John Whitfield spoke about the Mitford family and their remarkable lives. Living so near to Chatsworth House, we know a good deal about Deborah Mitford, the Late Duchess of Devonshire, her efforts to save the house, links with the Kennedy family, her lively correspondence and interest in hens etc. but perhaps we didn't know so much about her parents, sisters and brother. The last meeting of our year will be the annual business meeting on April 17<sup>th</sup>.

The film-goers amongst our members enjoyed a visit to Lowdham to see Victoria and Abdul. They found the talk given afterwards by the author of the book on which the film was based particularly interesting.

Members also enjoyed several social occasions, the monthly coffee morning - no cake - an impromptu lunch at our very own Waggon and Horses - no pud for most of us - (this lunch was instead of the trip to Derby which was cancelled by snow) and a celebration afternoon tea at the Cafe Deli room upstairs – lots of cake - to mark the centenary of the Nottinghamshire Federation of WIs. At this last event we were entertained by “Voice Versa” who performed readings by a wide range of authors and poets on the subject of women of all sorts including Shakespeare's wife and the story of Little Riding Hood with a feminist twist. We were pleased to welcome the County President and other officers.

We are always happy to welcome new members when we meet on the third Tuesday of each month in the Village Hall.

*Rachael Andrew*

## **CHURCH NEWS**

### **Congratulations**

Revd Phil and Veronica were married quietly in St Peters' Church, Thurgarton on Tuesday 27<sup>th</sup> February. We offer them our congratulations and best wishes for their future happiness.

### **Lent Lunches**

The Saturday Lent Lunches have been very successful with an average of 20 people attending. Over £600 has been donated to the charities chosen by the hosts. These are St Mary's Church, Oxfam, Keframa School Build, Brain Tumour Research and Amnesty International.

### **Coffee Morning**

Over 40 people attended the Friendship Coffee Morning in February. This was the third such event hosted by the Village Hall Committee, the WI and St Mary's Church. It has now become a regular feature of the social calendar, taking place on the last

Friday of each month from 10am. We look forward to seeing old and new friends at future events. Why not bring a neighbour or someone who might appreciate a bit of new company?

### Mothering Sunday

Suzanne Dent, Reader at Holy Trinity, ably assisted by Louise Nettleship on keyboard, led the Mothering Sunday Service. Forty adults and children attended. Suzanne used a service devised by the Mothers' Union and a collection was taken to support their work in Tanzania. Children who attend the church after school club read prayers and Bible passages. During the service a prayer tree was created and flowers were distributed by the children to their mothers.

### Prayer Labyrinth

Each church in the benefice is contributing to a labyrinth prayer path at Rolleston Church based on the events of Holy week. The labyrinth will be open from 24<sup>th</sup> March until Saturday 7<sup>th</sup> April so that people can walk through it, stopping at each station where there will be an opportunity to reflect on the material provided or take part in an activity.

### The Annual Parochial Church Meeting

This will be held in St Mary's on Wednesday 25<sup>th</sup> April at 7pm. If you would like to find out about the work of the church over the preceding year you will be very welcome.

*Diana Temperley and Rachael Andrew, Churchwardens*

## THE NIGHT WATCH

*"When you're lying awake with a dismal headache, and repose is taboo'd by anxiety, ---".* These words are the opening lines of the Lord Chancellor's song from *Iolanthe* by Gilbert and Sullivan. How many of us can sympathise with the poor man? Hearing the clock strike every hour while you lie still, trying hard to remember what you have read about mindfulness and self-hypnosis, is not the best way of preparing for the day ahead. *"And you tumble and toss, and you're hot and you're cross"* – does that seem familiar? The thoughts that crowd your mind are not usually conducive to sleep – all the worries or concerns that you were too busy to deal with during the day now seize the opportunity to sneak in behind your guard and assume enormous proportions. Even though your rational self occasionally manages to peek through the cracks between the overpowering thoughts to remind you that all will be well in daylight, it gets elbowed out by the monsters that have taken over your night time hours. So then you try another tack – remembering enjoyable or funny happenings, imagining interesting situations and making up stories around them, and listening to the night noises. Cars sound so secretive at 3 am – where are they going? Where have they come from? Why has the security light come on? Is it the wind, a cat, a fox, or a human on some nefarious business? And, with luck, the owls – their gentle calls are full of mystery, but they do help to focus the mind on trying to picture where they are. Then the clock strikes again, and you go and get a hot drink and a bowl of cereal. By which time it's getting light, but miraculously you fall asleep, and wake up *"with a dismal headache"*.



How different for a night worker – desperately trying to stay awake! Sixty years ago, night duty for a nurse in a London hospital could be a challenge. A ward of 30 patients, sometimes quiet, sometimes frantically busy and, from the central position in the ward, on a quiet night every sound is monitored and analysed by the nurses. A bed light comes on over Mr B's bed – he will need another injection. Mr C upsets his glass of water – and swears quietly. The oxygen cylinder by Mr D's bed needs checking– Mr E needs to have his sheets changed and, forgetting the time of day, talks loudly to the nurse. “Eh? 2.30? sorry Nurse, I'll pipe down”. 92 year old Mr F decides to go home, but is gently dissuaded and given a cup of Ovaltine. And, during this, Night Sister comes gliding silently in and is given a complete ward round by the senior nurse - (no electronic aids in those days!) – the doctors come and go, and Big Ben booms across the Thames every 15 minutes. At last the night staff go off duty, and spend the day trying to sleep . . . . . !

*Diana Temperley*

### **BLEASBY LOCAL HISTORY SOCIETY**

The Society's AGM was held in March and, as well as the usual AGM business, we enjoyed hearing from Ken Ogilvie on his experiences of researching a “mystery soldier” whose name appears on our war memorial but whose association with the parish was not readily evident.

On April 24th our new annual programme begins with a talk entitled “Farmers, Cottagers and Paupers” by Gedling historian, Ted White. This is followed on May 22nd by “Mediaeval Graffiti” presented by Matt Beresford, an archaeologist very active in this area.

All are most welcome to attend our talks – free to members for an annual fee of £10 and £2.50 for visitors attending a talk. Meetings start at 7.30pm in the Village Hall.

*Barbara Cast - President of Bleasby Local History Society*

### **LENT LUNCH AND KEFRAMA SCHOOL**

We hosted a Lent lunch on a Saturday in February, and how lovely it was to meet our neighbours in Bleasby and chat about such a variety of subjects whilst enjoying a simple soup and cheese lunch. We raised £130 for our chosen charity, Keframa School Build.

KSB is a group of friends who have been inspired by an amazing family in Northern Uganda, striving to provide (almost) unheard of secondary education in one of the poorest areas of Uganda. The Kezzy family began Keframa High School on their family land with the most basic of run-down huts, no water or electricity, and yet have 200 students, most orphaned or coming from single parent families, studying for O level examinations. Having spent some time in Keframa 18 months ago we, along with some other friends who had also spent time in Uganda getting to know the remarkable Kezzy family, began to fundraise to build a safe and new school building.

As I am writing this, Tom is preparing to visit Keframa again and hopefully further the contracts ready to begin building. Land has been bought near to the existing school and water bores drilled on the new school site, as well as in the nearby village. We have some ways to go with the fundraising, £190,000 of £250,000 to date, but we are excited and encouraged to 'keep going' when we see and hear about the inspirational students and committed teachers.

Thanks you to all of you in the village who have supported Keframa School Build, either at coffee mornings, the Ball last spring in Bath, or by joining us for a Lent lunch.

Do follow us on Facebook (Keframa School Build) and take look at our website and just giving page at [www.keframaskoolbuild.co.uk](http://www.keframaskoolbuild.co.uk)

*The Hall family*

## **BLEASBY AIRCREWS MEMORIAL UPDATE**

### **The Memorial**

Much progress has been made since the last report and the manufacture of the new memorial is now nearing completion, the inscriptions are now being added and it should soon be ready for assembly on site on the Glebe Field. The surface paving and the final landscaping round the memorial has been delayed for funding reasons and will now be completed by the end of April. The memorial itself will then be erected at the site and be available for public viewing. An explanatory booklet including photographs from family albums, flying log books, etc. is being prepared and will be available for perusal at the Waggon and Horses, where there will also be a Visitors' Book.

The research to trace the families of the 40 airmen whose names are on the memorial is continuing. Contact has now been made with 17 of the aircrew families and about 35 family members have asked to attend the Service of Thanksgiving and Dedication Event. These contacts include families living in Australia and Canada.

### **The Service of Thanksgiving and Dedication Event – 1<sup>st</sup> September, 2018**

Following the feedback from the Parish Plan Questionnaire, Bleasby Parish Council formed an Events Organisation Group. A sub-group of nine volunteers (plus other helpers) has taken on the overall task of organising the planned Service of Thanksgiving and Dedication event. Revd Phil White and Bleasby PCC are organising the special thanksgiving service in St Mary's Church. Attendance in the church may be limited by the capacity of the church. However, the Dedication Event will be held on the Glebe Field at 1pm and all parishioners and visitors are most welcome to attend and witness this event. Further details of the plans for these events will be given in the next issue of Bleasby News.

Preparations for catering for veterans and families of crew members and representatives of the five air forces are being made with the help of Bleasby WI. Plans for off-street car parking for visitors, catering at the Waggon and Horses, floral

decoration of St Mary's Church, knitted decorations for the Glebe Field and elsewhere, planning for visitors and event logistics, etc., are all being developed.

### Fundraising

Good progress has been achieved with the Sponsor the Slab for £20 campaign. Against the original target of £4,145 which is the total cost of the foundations, disability access, and ground surface landscaping, around £3,000 has now been raised. Thank you so much to everyone who has contributed so generously with donations so far. We still have just over £1,000 to go to achieve the target, so please help if you can. Donations can be handed in at the Waggon and Horses where Gift Aid Forms can also be obtained. Gift Aid forms can also be downloaded from the Bleasby Village Community website.

After four years of research and effort, this project is hopefully now nearing completion.


Ken Ogilvie

# **NJN JOINERY**

---

Phone: Nigel Newcombe  
on  
01636 525506  
or  
Mobile: 07837 235427

**ALL TYPES OF JOINERY  
AND  
MAINTENANCE WORK  
UNDERTAKEN**



**NJN JOINERY**

“On Sunday the 3<sup>rd</sup> May, the Methodists held a camp meeting, at the four lanes end, in this parish, which is supposed to be the first preaching in the open air ever seen in this village.”

*John Holmes 1818*

# **LAKE DISTRICT HOLIDAY COTTAGE**

Borrowdale Road, Keswick

3 Bedrooms | Sleeps 6

**TO LET**

Fully refurbished holiday cottage with gas central heating,  
open fire place and private parking

Views overlooking the fells, front and rear gardens,  
superb location

**For further details please ring**

**01636 830209 | 07812 101303**

**A. Rickett & Son,  
Bleasby  
Builder & Contractor  
Tel: 01636 830468**

## **PARISH PLAN STEERING GROUP – PROGRESS REPORT MARCH 2018**

It has been a few months since our last progress report but, rest assured, the steering group has been working hard in the background analysing your feedback from the parish plan questionnaire. Unfortunately this does take time, particularly when looking at 'open' questions, for example we received 111 comments regarding problems with parking. However, many of you offered practical solutions worthy of serious consideration. This information is vital to us and, where viable, will create the foundations of the completed parish plan.

If you would like to view the results go to Bleasby Community Website as below and click on Parish Plan.

[www.hugofox.com/community/bleasby-community-website-10159/about-us](http://www.hugofox.com/community/bleasby-community-website-10159/about-us)

Please note we have chosen not to share the comments publicly as it was important to the steering group that people felt they could speak freely without worrying that their comments being revealed. You may find the results are in small font and there will be blank pages where comments have been removed. The results will be converted into a more user friendly format when creating the parish plan. As the results are 159 pages in total the steering group did not feel it would be environmentally friendly to print a copy for everyone. If however you do not have access to the internet or would prefer to see a paper copy of the results we can make this available to you. Please contact Charlotte Gent on 07947 571280 or by email at [charlotte.gent@btinternet.com](mailto:charlotte.gent@btinternet.com)

### **What we are doing now?**

Using the analysis of your feedback, an initial action plan is currently being created. Please see below an example of the action plan for the community spirit section:

#### **The Community Spirit section covered clubs, classes and groups, community events and community support for residents.**

- 84% of respondents cited that Community Spirit was an important aspect to living in Bleasby
- Demand for new clubs covering a range of interests e.g. Youth Club, Gardening, Walking
- 5/163 respondents were willing to run new clubs
- 88% of respondents value and enjoy community events and there was a diverse range of suggestions for new events
- 27 people said yes to hearing more about the Defibrillator Village Emergency Telephone System (VETS) run by Community Heartbeat Trust (CHT).



<b>Issue/ opport unity</b>	<b>What could we do?</b>	<b>How we can do it</b>	<b>Who can help?</b>	<b>When could it happen?</b>	<b>What's happened so far?</b>
More frequent /variety of community events	Review ideas from questionnaire comments	Establish Events Group to oversee all event activities	Parish Plan Steering Group	Immediately	Events group initial meetings held Sub groups now established and meeting regularly to plan 4 events for this year.
Demand for new clubs	Facilitate start- up of new clubs	Public meeting Contact residents who expressed an interest in running clubs	Events Group	Spring time	
Interest in hearing more about the Defibrillator Village Emergency Telephone System (VETS) run by Community Heartbeat Trust (CHT).	Organise training sessions and get VETS system up and running	Get in touch with Community Heartbeat Trust (CHT) and interested residents to check viability	Parish Council	Immediately	Charlotte has contacted CHT – options for a VETS system to cover other needs for example – assistance for elderly, crime alert. Will incur additional cost – discuss at April steering group meeting

The steering group will meet in April to set priorities for the suggested actions based on cost, time to complete, resources needed, feasibility and the impact they will have on us and our village. We will then hold a public meeting to share the action plan with you to make sure we have interpreted your feedback correctly. The date for this will be set after the steering group's April meeting when we are certain we are ready. It is important we don't rush this stage and make sure we are acting in your best interests. In the meantime, some of the more straight forward actions are being implemented straight away:

### Walking & footpaths

People who had shown an interest in the questionnaire in joining a walking and footpaths group were invited to an inaugural meeting on Wednesday 21<sup>st</sup> March. If anyone is interested in joining this group please contact Peter Cast 01636 830284 or email [peterdcast@btinternet.com](mailto:peterdcast@btinternet.com)

### Neighbourhood Watch

An open meeting to re-establish the Neighbourhood Watch group has been organised. We encourage you to attend this meeting where possible.

### Events Group

The events group are up and running and busy working in sub-groups to organise different events for 2018. Please note for your diary: Saturday 19<sup>th</sup> May – Bleasby Village Street Party – see poster for more details. Sunday 22<sup>nd</sup> July – Bleasby Bike Fest – Gypsy Lane/Glebe Field – details of this are still being finalised but this event will be in the afternoon and is the chance for children of all ages to come along and learn to ride a bike, improve their cycling skills or try some challenging skill sections on Glebe Field. More details to follow but make a note in your diary to keep it free!

We hope you will find this update informative and will keep you posted as our work progresses.

*Charlotte Gent*



### **YOGA SESSIONS IN THE VILLAGE HALL**

Louise Luiggi is holding classes in Bleasby Village Hall on Thursdays from 10am until 11am - no previous yoga experience required and mats are provided. £8 per session. Louise asks that you contact her before a session so that your mat space is reserved.

Phone Louise on 07815 823155  
or email [louiseluiggi@immortelleyoga.com](mailto:louiseluiggi@immortelleyoga.com)

## Bleasby Diary of Events

Date	Time	Event	Location
Until Saturday 7 <sup>th</sup> April	10am till dusk	West Trent Benefice Labyrinth installation	Holy Trinity Rolleston
Friday 30 <sup>th</sup> March	10am start	Good Friday walk	Starting at Upton church
Friday 30 <sup>th</sup> March	10am - 12 noon	Friendship Coffee Morning	Village Hall
Sunday 1 <sup>st</sup> April	10.30am	Easter Sunday - service of Holy Communion	St Mary's
Tuesday 3 <sup>rd</sup> - 13 <sup>th</sup> April		School holiday following the Easter Bank Holiday	
Wednesday 4 <sup>th</sup> April	6.30pm- 7.30pm	Churchyard Working Party	St Mary's Churchyard
Sunday 8 <sup>th</sup> April	10.30am	Service of Morning Praise for Everyone	St Mary's
Monday 9 <sup>th</sup> April	7.30pm	Meeting of Bleasby Parish Council	Village Hall
Sunday 15 <sup>th</sup> April	10.30am	Benefice service of Holy Communion	St Peter's Thurgarton
Tuesday 17 <sup>th</sup> April	7.30pm	Annual meeting of Bleasby WI	Village Hall
Sunday 22 <sup>nd</sup> April	10.30am	Service of Morning Praise for Everyone	St Mary's
Tuesday 24 <sup>th</sup> April	7.30pm	Meeting of BLHS with Ted White on Farmers, Cottagers & Paupers	Village Hall
Wednesday 25 <sup>th</sup> April	7pm	Annual Parochial Church Meeting	St Mary's
Friday 27 <sup>th</sup> April	10am - 12 noon	Friendship Coffee Morning	Village Hall
Saturday 28 <sup>th</sup> April	7.30pm	Southwell Choral Society sings Durufle's Requiem and Paul McCartney's Ecce Cor Meum	Southwell Minster
Sunday 29 <sup>th</sup> April	10.30am	Benefice service of Holy Communion	St James Halloughton
Sunday 6 <sup>th</sup> May	10.30am	Service of Morning Praise for Everyone	St Mary's
Monday 7 <sup>th</sup> May		Early May Bank Holiday	
Sunday 13 <sup>th</sup> May	10.30am	Service of Morning Praise for Everyone	St Mary's

Monday 14 <sup>th</sup> May	7.30pm	Meeting of Bleasby Parish Council	Village Hall
Tuesday 15 <sup>th</sup> May	7.30pm	Meeting of Bleasby WI with talk on 'Resolutions - Past to Present'	Village Hall
Friday 18 <sup>th</sup> May		Deadline for June's Bleasby News	
Saturday 19 <sup>th</sup> May		Royal Wedding celebrations with village street party	Glebe Field
Sunday 20 <sup>th</sup> May	10.30am	Benefice service of Holy Communion	St Mary's
Tuesday 22 <sup>nd</sup> May	7.30pm	Meeting of Bleasby Local Hist Society with Matt Beresford on Mediaeval Graffiti	Village Hall
Friday 25 <sup>th</sup> May	10am - 12 noon	Friendship Coffee Morning	Village Hall
Sunday 27 <sup>th</sup> May	10.30am	Service of Morning Praise for Everyone	St Mary's
Monday 28 <sup>th</sup> May - 1 <sup>st</sup> June		Spring Bank Holiday followed by School half-term	

## WATERMILL COTTAGE

LUXURY SELF CATERING ACCOMMODATION

 SLEEPS 8  SPACIOUS GARDEN  OPEN PLAN LIVING

Watermill Cottage Anglesey LL65 3PH



ENQUIRIES: Alison Collins

 07788738436

 [alisoncreative@icloud.com](mailto:alisoncreative@icloud.com)

 WatermillCottage

## **ADVICE FROM THE SAFER NEIGHBOURHOOD LEAD OFFICER**

Following our Trent Villages meeting with PCSO Keith Crowhurst on 13<sup>th</sup> March, he has sent the simple advice set out below. I am sure that if we all follow it and, of course, kept a look-out for suspicious activity, Bleasby Parish will remain relatively crime free.

### **To Protect your own property**

- Ensure you lock your doors and windows and fit good quality locks to your exterior doors. If you have an alarm don't forget to set it.
- Modern cars can only be stolen with keys. Don't leave the keys accessible to thieves in a bowl near the front door! Take your vehicle keys out of any outbuildings – leaving them easily accessible can invalidate your insurance and makes vehicles any easy target.
- Lock your front doors if you are in the back gardens – burglaries have occurred whilst people have been mowing lawns or in outbuildings. It only take 2 minutes to take your valuables and do a sweep of the house. It takes 2 seconds to turn the key in the door.
- Modern door bells can send images to your smart phone and have a facility to answer the door bell away from your home address. Doorbells like these have saved a number of burglaries recently. They are as little as £200. Thieves tend to ring the doorbell first to make sure no one is in!
- Advertise that you protectively mark your valuable property with your name and postcode preferably using a visible property marking kit such as Cremark or SelectaMARK.
- Don't leave valuables such as laptops/cash/watches/phones on view. Straight away there is a reward for breaking in.

### **Suspicious activity**

- If you see something that seems suspicious or feels not right then please report it there and then at the time giving as much information as safely possible. If you believe that a vehicle looks suspicious or people look dodgy then ring 999. Police can't investigate reports hours or days afterwards when they have left. We need you to help us by reporting incidents at the time.
- Door to door sellers are normally not licenced to do this and often have extensive criminal records. Ex-offenders selling cleaning materials can be legitimate but can also pass information regarding insecurities to follow offenders. Please report these people as soon as possible on 999 so that Police can speak to them and deter them from being in your villages.

If you don't report incidents in your areas then officers are normally asked to concentrate on areas where reports are coming in. Help us to help you by letting us know what is happening in your villages. A phone call only takes 5 minutes but can make a huge difference to the people who don't suffer crime as a result. If the reports are investigated and turn out to be false alarms then no-one gets told off!

Many thanks,  
PCSO 4741 Keith Crowhurst – Ollerton/Southwell Police Station  
Mobile - 07889 702823 keith.crowhurst4741@nottinghamshire.pnn.police.uk

A meeting was arranged for 29<sup>th</sup> March for all those people who expressed a wish to support the Bleasby Neighbourhood Group. All those that left contact details on the Parish Plan Questionnaire return were contacted.

Please note that it is critical for effective police action for the exact registration details of any suspicious or suspected vehicle to be recorded and given to the police as soon as possible.

*Peter Cast*



**April Church Services in the West Trent Benefice (HC = Holy Communion: MPE = Morning Praise for Everyone: EP = Evening Prayer)**

<b>April</b>	<b>Bleasby</b>	<b>Halloughton</b>	<b>Hoveringham</b>	<b>Morton</b>	<b>Rolleston</b>	<b>Thurgarton</b>	<b>Upton</b>
Easter Day Sunday 1 <sup>st</sup>	10.30am HC		6pm EP	9am HC	10.30am MPE	8am Breakfast Communion at Methodist Church	10.30am HC
Sunday 8 <sup>th</sup>	10.30am MPE		10.30am HC	10.30am MPE	10.30am MPE	10.30am HC	10.30am MPE
Tuesday 10 <sup>th</sup>							10.am HC
Sunday 15 <sup>th</sup>						10.30am Benefice HC	
Sunday 22 <sup>nd</sup>	10.30am MPE		10.30am MPE	10.30am HC	10.30am HC	10.30am with Methodists	10.30am MPE
Sunday 29 <sup>th</sup>		10.30am Benefice HC					

**May Church Services in the West Trent Benefice (HC = Holy Communion: MPE = Morning Praise for Everyone: EP = Evening Prayer)**

<b>May</b>	<b>Bleasby</b>	<b>Halloughton</b>	<b>Hoveringham</b>	<b>Morton</b>	<b>Rolleston</b>	<b>Thurgarton</b>	<b>Upton</b>
Sunday 6 <sup>th</sup>	10.30am MPE		6pm EP	9am HC	10.30am MPE	10.30am MPE	10.30am HC
Sunday 13 <sup>th</sup>	10.30am MPE	10.30am MPE	10.30am HC	10.30am MPE	10.30am MPE	10.30am HC	10.30am MPE
Tuesday 15 <sup>th</sup>							10am HC
Sunday 20 <sup>th</sup>	10.30am Benefice HC						
Sunday 27 <sup>th</sup>	10.30am MPE		10.30am MPE at Tractor Rally	10.30am HC	10.30am HC	10.30am with Methodists	10.30am MPE

**WHAT'S IN A NAME?**

The parish of Bleasby encompasses a number of hamlets and smaller settlement areas. Each of them is blest with a name which gives some idea what they meant to those earliest inhabitants who lived in them or lived nearby enough to need some term to identify them by. We are fortunate in having many ancient records and maps which allow us to trace the early forms of our parish names – the earliest being the Saxon charter of 956, and then there are the various documents which form part of Thurgarton Priory charters, the late 16<sup>th</sup> century estate map and the Enclosure maps, as well as many other various papers which all build up an interesting picture of our patch.

So let's start with Bleasby – the name, like many others, is made up of two elements, the second one being a generic description of the type of place, the first being specific to this place, being a personal name, probably of the leader or owner of the settlement. So we have *Blesi* – the name of a Scandinavian man who probably was of, or was descended from, one of the invading or settling groups from Denmark. He must have been an important figure in this settlement and his name has persisted through the centuries. Bleasby was a *by* ie a Danish settlement – however, this does not necessarily mean that all the inhabitants were Danish, just that at some period they were in charge.

Then there is the hamlet of Goverton which bears the suffix *ton* which is the Old English name for a settlement. However, Goverton begins with another Scandinavian name – likely to be something like *Gunuert*. So maybe the Danes took over an existing Saxon village.

In the middle of the parish there was an area which was called *Notown* into the last century – the first record of this is in 1604 and it grew up in the poorly draining land between the Goverton hills and Bleasby village proper (which was centred on the church area where many of the older houses still lie). It probably originated as a somewhat random settlement of small cottages built by poorer inhabitants – ie it was 'no town'.

At the other end of the parish is Gibsmere – a name which is purely Saxon, recording the man *Gyppi* and the watery nature of this place with the suffix *mere*, Old English for pool, which we now know as *Pickerell Play or Pond*.

Near the river we have another wholly English name – *Hazelford* – the meaning of which is clear – it is the ford where the hazels grew.

*Rudsey* on the Goverton hills may also have been a small settlement area, as it is now – the earliest reference to it is in 1539 as *Rudsalle* and it is likely to have derived from *Rudda's halh*, its suffix meaning a *nook of land*. *Rudda* was both a Scandinavian woman's name and an OE man's name.

So there is a lot in a name!

Barbara Cast

## **THE BOUNDS OF BLEASBY PARISH IN 1891**

Census Bleasby 1891 "the whole of the civil parish of Bleasby, contents comprising the three hamlets, Goverton, Notown and Gibsmere, the whole of Goverton including the Mill houses, Farnsworth and Dawson cottages, Rudsey Farm, Charlesworths farm, the Brickyard Farm, and the cottages at the bottom of Soar-gate Hill, the Railway Station House. The whole of Notown, all the houses and cottages including North Farmhouse. The whole of Gibsmere including Lidgetts farmhouse, Johnsons Cottage and the Hazleford ferry house."

Going away?

Why not leave your pets with us?

## Valley Boarding Kennels & Cattery



*Situated between Bleasby and Fiskerton in the heart of the countryside*

**\*\* Kennels and catteries with outside individual runs \*\***

**Please visit to see our facilities**

**Gypsy Lane, Fiskerton | Telephone: 01636 830268**

[www.valley.talktalk.net](http://www.valley.talktalk.net)

Golden Charter Funeral Plans from **D. J. Hall Funeral Directors**

# Making sure everything goes to plan



**D. J. Hall Funeral Directors**  
62 King Street, Southwell,  
Nottinghamshire NG25 0EN  
**(01636) 812481**

A funeral plan leaves nothing to chance and provides **peace of mind** for you and those you care about.

We recommend funeral plans from Golden Charter, the UK's largest provider of plans to independent funeral directors like us. With a Golden Charter funeral plan you'll benefit from:

- **Fixing the cost** of our services at today's prices
- **Reassurance** for your family – no uncertainty or difficult decisions
- **Complete flexibility** to choose the funeral you want

Taking out a funeral plan is one of the most **thoughtful decisions** you could make.

**Golden Charter**   
Funeral Plans

The UK's largest independent funeral plan provider  
**[yourfuneraldirectors.co.uk](http://yourfuneraldirectors.co.uk)**

GC-LFT 8804

## **BUS SERVICE – 300 MEDI-CONNECT**

The new bus service, which runs on Mondays, Wednesdays and Fridays from Lowdham to Southwell and then on to Newark, commenced on 3<sup>rd</sup> January. The timetable is below and the service is available to all.

<b>Outgoing stopping point</b>	<b>1<sup>st</sup> service</b>	<b>2<sup>nd</sup> service</b>
Lowdham, Epperstone Road	09.30	12.30
Lowdham, Magna Carta	09.33	12.33
Lowdham Station	09.34	12.34
Caythorpe, Main Street	09.37	12.37
Hoveringham, Main Street	09.41	12.41
Thurgarton, Bleasby Road	09.48	12.48
Bleasby, Main Street	09.52	12.52
Fiskerton	09.57	12.57
Morton, Main Street	10.00	13.00
Southwell, Church Street	10.04	13.04
Southwell, Ropewalk	10.07	13.07
Newark bus station	10.30	13.30
<b>Returning stopping point</b>	<b>1<sup>st</sup> service</b>	<b>2<sup>nd</sup> service</b>
Newark bus station	10.35	13.35
Southwell, Church Street	10.58	13.58
Southwell, Ropewalk	11.01	14.01
Morton, Main Street	11.07	14.07
Fiskerton	11.10	14.10
Bleasby, Main Street	11.15	14.15
Thurgarton, Bleasby Road	11.19	14.19
Hoveringham, Main Street	11.25	14.25
Caythorpe, Main Street	11.29	14.29
Lowdham Station	11.32	14.32
Lowdham, Magna Carta	11.33	14.33
Lowdham, Epperstone Road	11.36	14.36

## **KEEPING IN TOUCH WITH BLEASBY EVENTS AND NEWS**

*Are you aware that you can sign up for email updates on local information from the following website [www.bleasbycommunity.uk](http://www.bleasbycommunity.uk). The community website is maintained and monitored by Bleasby Parish Council. PC information can be found on the Council website [www.bleasbyparishcouncil.uk](http://www.bleasbyparishcouncil.uk).*

# **ROB BROWN LTD PLUMBING AND HEATING**

MOBILE 07973890499

NOW BASED IN BILSTHORPE

email robinb9@gmail.com  
more than 20 years experience

INSTALLATION SERVICE & REPAIRS  
OF DOMESTIC GAS APPLIANCES &  
HEATING & HOT WATER SYSTEMS

ALL PLUMBING WORK UNDERTAKEN  
SMALL BUILDING WORKS  
AND PROPERTY REPAIRS  
ELECTRICAL REPAIRS

DO YOU RENT PROPERTY?  
WE DO LANDLORD,S GAS CERTIFICATES  
MAINS PRESSURE HOT WATER  
Fully insured /no call out fee





# Your local Hearing Care Specialists

**0115 961 8351**

**FREE HEARING CHECKS**

**EAR WAX REMOVAL**

**TINNITUS SUPPORT**

**HOME VISITS**

Whether you are looking into hearing issues for the first time or are struggling with your existing hearing aids then Correct Hearing can help.

We are a family run and owned independent practice, with over 30 years experience.

Call today for an informal chat or to request your FREE Hearing Guide 0800 368 47 47 or 0115 9618351



**Sarah Vokes**



**Web: [www.correcthearing.co.uk](http://www.correcthearing.co.uk)**

**Email: [info@correcthearing.co.uk](mailto:info@correcthearing.co.uk)**

**242 Oakdale Road, Carlton, Notts, NG4 1AD**

## **JUBILEE PONDS – AND MARCH CAME MARCHING IN!**

The first significant snowfall of winter arrived on the last day of February and Mad March Winds struck as the “Beast from the East” hit us all with chilling ferocity. With the sub-zero temperatures and wind-chill factor of minus 8 degrees c, one might have expected that the Ponds would have frozen over – but not so; the considerable wave action caused by the winds created a day reminiscent of childhood Lincolnshire Coast experiences, with deeply furrowed grey water being driven by biting winds on to shallow sandy shores with almost deafening demand.

This ‘mixing of waters’, of course, prevented ice forming in all but the most sheltered corners and only the tree-surrounded Island Carp Bay, in the furthest westerly corner of the site, was taken by these Siberian winds’ icy grip. Fifty gadwall stuck out the buffeting but most other wildfowl sensibly withdrew to the unfrozen water margins, whilst the Gibsmere Lake wigeon seemed to retire to their grassland feeding areas. The cormorants, on the other hand, seemed to be quite at home on this ‘inland sea’ and all five of them took to the waters like Russian New Year’s Day bathers! The air was so cold that hanging candles of ice were created by the constant dipping of overhanging branches into the crests of the waves, building up progressively thicker and longer icy sheaths that twinkled and rattled in each wave’s trough.

As many of you parents and grandparents will have discovered, to your children’s frustration, the snow formed and fell as beads more like the polystyrene filling of an earlier decade which would not mould into even a snowball – let alone a snowman – all we could manage were recumbent Epstein-like figures of our imagination.

Whilst flocks of fieldfare found some respite and scant feeding in the Ponds woodland, scrub and hedgerow, most small birds found refuge in our gardens and it can be said that, over those bitter cold, wind-blasting snow covered days, we good inhabitants of Bleasby did a great deal to maintain our local and visiting bird populations. Both green and spotted woodpeckers sought shelter - the dangerous contrast of the green and red plumage of the former was startling as it pushed plough-like into the snow to access its underground food-bank of ant-nests. Redwing and song thrushes turned over every exposed leaf or wind-accumulated debris whilst tree-creepers, goldcrests and wrens scoured any remaining snow-free bark and corner for tiny invertebrate forms.

What was clearly defined by this wintry experience was the need for all gardens to be linked by natural vegetation of tree, shrub and biodegradable groundcover to create green corridors for the safe, protected and provisioned movement of wildlife at all times, but especially in winter conditions such as these. On the Ponds gorse, ivy, holly, pine and dense cover provide the key refuges. But could we link our gardens to one another and to the adjacent countryside like some massive mosaic jigsaw. It could enhance garden design and richness as well as safeguarding our village’s wildlife population and rural scene.

*Peter Cast*

# HYDEBARKER

WORLDWIDE TRAVEL & ADVENTURE



**Tel: 01636 816 262**

www.hbtravel.co.uk | 1 King Street, Southwell

## Home. There's no place like it.

For reliable, compassionate at home care, give us a call today for a free Care Consultation.

**Home Instead**  
SENIOR CARE  
*to us, it's personal.*

Inspected and rated

**Outstanding** ★



**City & Guilds**

We have People Care & Skills Award with a 5 star rating



THE QUEEN'S AWARD FOR ENTERPRISE  
2015-2016



### OUR CARE SERVICES

We offer personalised care services to meet you and your family's needs.

- Companionship care
- Home help
- Personal care
- Alzheimer's and dementia care
- Respite care
- Overnight and live in care



Home Instead allow your loved ones to stay happy and independent at home as they age, rather than anywhere else. Contact us today for a free, no-obligation Care Consultation.

We are very proud of our local reputation and honoured to be the only home care provider in Nottinghamshire to be inspected and rated as "outstanding" by the Care Quality Commission.

- ✓ We turn up on time - every time.
- ✓ Same CAREGivers every time.
- ✓ Minimum 1 hour visits.
- ✓ Our staff do not wear uniforms, so to everyone else, they look like family or friends.

**Call our team today:**

**01949 480480**

**or 01636 550480**

87 Main St, East Bridgford.  
Nottingham NG13 8NH, UK  
homeinstead.co.uk/eastnottingham

# Ben Morgan

## Painting & Decorating Services



**T: 01636 831333**

**M: 07775 888851**

**E: [ben@morganpainting.co.uk](mailto:ben@morganpainting.co.uk)**

### Domestic

**"We have used four different decorators over the last few years and every time, there has been a problem and the job has not been carried out to a satisfactory result. Ben was recommended to us and the job he did was fantastic and as we wanted. He is very professional in both his work and his personality. He offers very competitive rates and I would definitely use again and highly recommend."**

***Nicola & Nigel Bennett, Goverton***

### Rented

### Office

### Insurance

**"Ben has just completed our kitchen extension and done a fantastic job, I would highly recommend his services. He is highly skilled and professional with in depth knowledge of paint and products, ensuring our walls are wipeable and the paint will not fade. We feel this is money well spent as our decoration will stand the test of time in a heavily used kitchen."**

***Janine and Chris Ford, Southwell***



**BenMorganPainting&Decorating**



# *Hazelford*

*The Provider of Quality Care*

Our home is situated in a beautiful location with open views of the river and surrounding countryside. With lovely gardens and an abundance of wildlife, this makes Hazelford a delightful location for our residents, to some of whom we offer a short break; for others we become their home.

We pride ourselves in offering a home from home environment with an excellent ethos whereby our residents are involved in the decisions we take. We focus on our residents' aspirations, ideas, views and suggestions.

We have a person centred approach to the care of the residents: this approach is vital to ensure the best possible outcome and wellbeing.

Dementia care is a specialist area: we ensure with sensitivity that the resident is supported continually with person centred care planning, reinforcing daily the aspects of their lives they enjoy to ensure wellbeing and pleasures on a daily basis as, sadly, the previous day may be forgotten.

Our aim is to offer stimulating activities, with one to one time for those who may have dementia: we specialise in this area and our approaches create a relaxed harmonious environment for all.

Our bedrooms are large with views over the countryside and offer a choice of colour and furnishings, personalising them to suit our residents' preferences and choice.

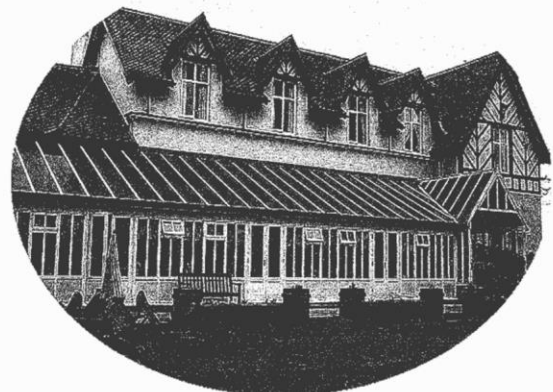
Please feel able to visit our home at any time – a warm welcome awaits you. We encourage families to also have an input into the plans the home may make. We hold family and friends of the home evenings.

With spring and summer comes along a plan of social events: for the summer an annual garden party, summer fair and schedule of outings to various venues.

## **HAZELFORD**

**Boat Lane  
Bleasby  
Nottingham  
NG14 7FT**

**Tel: 01636 830207**





# NOW OPEN



## THE RAILWAY, LOWDHAM

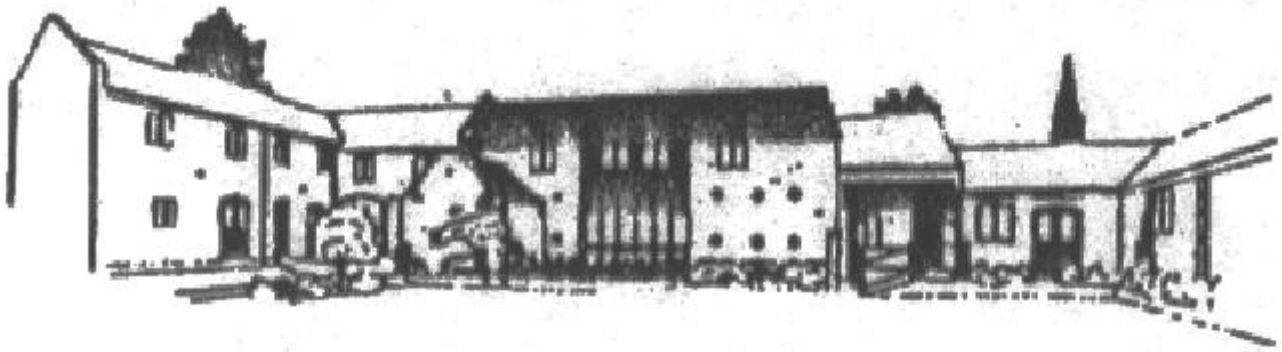
We are a great family friendly village pub, offering creative fresh dishes, real ales, craft lagers, exclusive wines and the warmest of welcomes.

Please come and visit us for breakfast, lunch, dinner or just a simple drink in our cosy bar. We also have a fabulous garden and outdoor dining terrace ready for when the sun shines!

Book now at [www.railwaylowdham.co.uk](http://www.railwaylowdham.co.uk) or telephone 0115 9663222  
Look out on our facebook page for special events and menus.



THE RAILWAY | STATION RD | LOWDHAM | NG14 7DU



# THE BYARS

A small, family owned and managed, independent Care  
Home situated amidst the rural landscape of the Trent  
Valley

The highest quality care in the highest quality  
accommodation

Our home offers long and short term care for the elderly

Viewing welcomed. Further details on request

THE BYARS

· CAYTHORPE · NR. LOWDHAM ·  
NOTTINGHAMSHIRE · NG14 7EB

REGISTERED NURSING HOME

**Tel: 0115 9663981**



# Save the Date



**Dear Parish Community,**

**We take great pleasure in requesting you to save the date for our Bleasby Village Street Party that will be taking place on 19 May 2018 in celebration of Harry & Meghan's royal wedding.**

**The events on the day have not been finalised but we are hoping to include televising the royal wedding and FA Cup final, maypole dancing and activities and games for all to enjoy on the Glebe Field.**

**We encourage you all to join the street party. The Waggon will have a hog roast and barbecue on the go or you may wish to bring along your own hamper. We want this day to be one that is remembered so please do save the date and help us come together as a community. More details to follow.**

**Thank you,**

**Your Bleasby Events Group working on behalf of Bleasby Parish Council**

*Whilst every effort is made to ensure accuracy, the editorial team cannot accept responsibility for errors or omissions in articles appearing in Bleasby News. The views expressed in Bleasby News are not necessarily those of the Editors nor of Bleasby Parish Council. Bleasby News is distributed by local volunteers to whom we remain very grateful. Printed by Toot Hill School Reprographics.*





**ALWAYS LOTS ON AT THE WAGGON AND HORSES  
GREAT FOOD – GREAT DRINKS – GREAT COMPANY**

***To reserve a table call 01636 830283***



**The Waggon and Horses – your friendly local at the heart of Bleasby Village**