



Benenden
Magazine
July 2022

ALL ABILITIES WELCOME FROM
BEGINNERS TO ADVANCED

Beck's Pilates



Classes are designed to build strength, improve posture and gain flexibility that will assist you in your everyday life.

OFFERING:

Small group classes and one-to-ones around Kent and East Sussex.
Mat Pilates sessions using small ball, bands and pilates ring.

Facebook Instagram Beckspilates

For inquiries, please contact Beck on beckspilates@gmail.com

YMCA QUALIFIED
INSTRUCTOR

ELECTRICIAN

Do you want a safe, reliable, reasonable priced Electrician?

New Fuse Boards - Smoke Detectors - Rewires - Extra Sockets

Fault finding - LED Lighting - New Builds & Extensions

GARDEN POWER & LIGHTING

Fully insured qualified electrician. 6 year Guarantee



I assure you of a quick response

Call Nick now 01580 279907

email: nick@njhelectrical.co.uk

www.njhelectricalservices.co.uk



For the perfect relationship...

Savills Cranbrook, 53-55 High St, Cranbrook TN17 3EE
01580 720 161 | cranbrook@savills.com

don't rely on luck, rely on



Forest
Farm
Cat
Hotel

Idyllic rural location
Individual heated chalets
housing up to four cats
Also welcome rabbits,
guinea pigs, hamsters etc.
Come and see us before booking

Call Lucy on 01580 242961
or 07720 966374
email.enquiries@forestfarmcathotel.co.uk
or see our website
www.forestfarmcathotel.co.uk

Bargain Carpets & Floors

Carpet and Vinyl supplied and fitted at reduced rates

- Same choice as any shop but up to half the price
- We can move your furniture for you and take away your old flooring



For free home sample viewing
and estimates please call Stuart or Lisa

01424 855882 / 07734 659834

bargainfloors@hotmail.co.uk

www.bargainfloors.co.uk

Checkatrade.com
Where reputation matters

Editorial



Like many of you, I expect, I'm currently recovering from a month filled with celebration: first the fabulous Jubilee weekend series of events, followed swiftly by the glorious fete. The sun shone (for the most part) for both and the village celebrated in style. Once again, the fete broke records, raising around £17,000 for the church and a variety of charities (we will report on how this will be allocated in the future). The photographs sprinkled throughout this issue show just how much visitors enjoyed the day. Such a lot of hard work by so many goes into making this a truly amazing and successful village occasion and huge congratulations to everyone who were involved in planning, collecting, sorting, building, running stalls and clearing up.

As always, it's volunteers who help oil the village wheels, and while the shop has many willing to spend just a couple of hours a week they need more (page 25). Not only have I improved my barista skills during my slot on a Monday morning, but also met many villagers and cajoled several into writing for this magazine! Peter Massey is one and this month not only does he take us on a nice circular walk (page 35), he also shares his experience test driving a bunch of electric cars (page 32). We welcome a new contributor in Iden Green resident Mark Hollander, who was invited to visit the newly refurbished Cranbrook Museum to explore its treasures and learn more about our local history (page 30).

If you fancy putting pen to paper or have a topic you would like us to cover, then, as always, please send us your suggestions to consider.

Ruth Clark, Co-Editor

The Benenden Magazine is published monthly as a joint venture by Benenden Parish Council and St George's Parochial Church Council. It is distributed free to all residents of the parish. Opinions expressed are not necessarily those of the publishers. Responsibility for accuracy of information rests with contributors and advertisers. Neither the publishers nor the editors shall be held responsible for or endorse any opinions, products or services printed in the magazine or directory.

Editors: Ruth Clark, Peter Thomas

Editorial Board: PCC Rep: Martin Pexton, PC Rep: Nicola Thomas,

Treasurer: Charles Trollope, Acting Advertising Manager: Paul Leek, Advertising Assistant: vacant

Distribution: Marilyn and Dick Hill, Layout Editor: Camilla Macdonald

Contributions to: benendenparishmagazine@gmail.com by the 10th of the preceding month.

Advertising orders or queries to: advertising.benendenmag@gmail.com.

Distribution queries to: dd.rhill@btinternet.com.

Postal address: c/o Community Office, Benenden Village Hall, Benenden, TN17 4DY 01580 240371

Printed by The Wealden Advertiser Ltd, Cowdens Close, Hawkhurst, Kent

Village Calendar

July

Saturday 2	Darts, St George's Club, 8.15pm	
Tuesday 5	Iden Green and Benenden WI, Social Evening, Memorial Hall, 7pm	p.11
Friday 8	Old Dairy Beer Tasting, Benenden School, 7pm	p.9
Saturday 9	Skittles, St George's Club, 8.15pm	
Saturday 16	Ladder Toss, St George's Club, 8.15pm	
Monday 18	Parish Council Meeting, Memorial Hall, 7pm	
Tuesday 19	Village Lunch, Benenden Village Hall, 12.30pm	p.15
Tuesday 19	Iden Green and Benenden WI, Potteries at Rye, Memorial Hall, 2pm	p.11
Saturday 23	Quiz Night, St George's Club, 8.15pm	
Tuesday 26	Merry and Bright, Garden Party at a Member's home, 2pm	p.17
Wednesday 27	Local Summer Pilgrimage, St Nicholas Church, Sandhurst, 9.45am	p.15
Saturday 30	Summer Barbecue, St George's Club, 8.15pm	

Iden Green Toddler Group

Tuesdays during term time in Iden Green Congregational Church, 9-11.30am

Wednesday Coffee Mornings

Wednesdays in the Memorial Hall, 10-11.30am

Benenden Bowls Club

Thursdays, April-September, on the recreation field, practice night, 6.30pm

Cakes & Chaos: Cafe and Toddler Group

Fridays during term time in St George's Church, 9-11.15am

Parish Council



It has been really delightful to see the large turn-out of residents for the recent events in the village - over the Jubilee weekend and also at our village fete. It was so lovely to catch up with old friends as well as meeting some of our newer residents, and very encouraging to see that so many young families have moved into the village over the last few years. And who can blame them? It's such a safe and beautiful place to bring up children.

On this point, our church is looking to revive the 'newcomers lunch' on 22 October, so a chance for the church and other organisations such as the Parish Council to welcome our latest residents. If you have moved into the village within the last three years, and would be interested in coming along to this very informal event, please do get in touch with Sally-Ann Marks at sallymarks100@hotmail.com for further details and to give her some idea of numbers.

Even though the crime levels in our parish are remarkably low, you may have noticed that there has been one unfortunate incident involving our memorial well at the crossroads in Benenden. The well, which commemorates Queen Victoria's Golden Jubilee in 1887, appears to have been a victim of a crime involving the theft of heavy duty cabling, which swung around loose from the perpetrators' car or van, and managed to shear the well from its padstone foundations, causing extensive damage to the oak frame and tiled roof.

After an initial assessment of the damage, it seems that the entire structure will now have to be removed from site for repair and renovation, and the parish council is working with and taking advice from the contractors who have taken on the restoration work for both our wells: Anthony Hicks Ltd.

Obviously this work is going to be even more expensive than originally estimated, but we will keep you informed of progress, and if any of you wish to contribute towards the restoration of the two wells, which are a beautiful and historic part of Benenden's past, please donate to www.wonderful.org/fundraisers/502#charity. Any donation will be very much appreciated.

Thank you, and enjoy the summer holidays.

Nicola Thomas, BPC Chair
nicolat@benendenparishcouncil.org

Caroline Levett, Benenden Parish Council Clerk
01580 240371 clerk@benendenparishcouncil.org
For more information see our website www.benendenparishcouncil.org or find us on Facebook

Parish Council Meeting
Monday 18 July 2022,
Memorial Hall, 7pm

Church Calendar

St George's Church

Rector: Revd David Commander 240658 revdavidcommander@gmail.com (day off: Thursday)
Curate: Revd Ylva Blid-Mackenzie 01233 820100 rev.ylva@gmail.com (Sunday, Monday and Tuesday)
Churchwarden: David Collard 241944 julia.collard@btinternet.com
Churchwarden: Sue Fisher 241907 sue@undaunted.co.uk
www.benendenchurch.org 850849 benendenchurch@gmail.com
Please inform the Rector, Curate or Churchwardens if you, or anyone else, is ill.

Saturday 2 July

4pm Connect Four
at Mission Church, Sandhurst
5pm Choral Evensong

Sunday 3 July	8am Communion at St Nicholas, Sandhurst	10am All-age Communion
Sunday 10 July	8am BCP Communion	10am Morning Worship
Sunday 17 July	8am Communion at St Nicholas, Sandhurst	10am Sung Eucharist
Sunday 24 July	8am Communion	10am Morning Worship
Sunday 31 July	8am Benefice Communion	10am Benefice Service at St Nicholas, Sandhurst
Morning Prayer	8am Mondays	

Mission Church, Sandhurst

Rector: Revd David Commander 240658 revdavidcommander@gmail.com (day off: Thursday)
Morning Prayer 8am Tuesdays
Mid-week Communion 10am Tuesdays

Iden Green Congregational Church

Pastor: Tobin Bird 240027 www.idengreen.org.uk
Sunday Services 10am Morning Worship 5.30pm Evening Worship
The 10am Morning Worship is broadcast on our YouTube channel: search 'Iden Green Congregational Church'.

The Roman Catholic Chapel of Our Lady and St Joseph TN17 4EL

Fr Barry Grant 713364 www.sttheodore-cranbrook.org
Masses 9am Sundays 7.30pm Holy Days

From the Parish Registers

Baptism 25 June Harry Kemp
Weddings 4 June Annabel Edwards and Jamie Moray
11 June Anna Gregson and Eden Morse

Rector's Letter



It's time for my holy trek with God

Back in the February edition I wrote to tell you that, after nearly 12 years of ministry - approaching nine years in this benefice - I had been granted a sabbatical by the Diocese.

Well, 22 weeks later, the time has now arrived; by the time you read this, I will have conducted my last services at St George's for a little while, and Helen and I will be taking a holiday together. I will then be on sabbatical and will return to parish ministry on Monday 3 October; trusting God that I will feel renewed and refreshed, ready for the work of parish ministry once more. Helen will also be taking a break; apart from Cakes & Chaos, she will not be at St George's. She will be spending some time with our daughters and our grandchildren and will experience worship with other communities.

A sabbatical - the Diocese has given me three months - is simply a time of renewal; a time of reconnecting with God. It is stepping completely out of my current ministry and being freed to 'embark on a holy trek with God'. My holy trek combines a love of the outdoors, walking, and Celtic spirituality. There will be plenty of walking; there will be times 'on retreat' with others - at the Christian Centre on Iona - and another retreat on Lindisfarne; and there will be times outdoors - in God's cathedral - enjoying His creation and exploring spiritual spaces in the Orkneys and the Outer Hebrides.

I am grateful to our Diocese, to our Parochial Church Council, to our churchwardens, and those who will continue the work in our benefice, for allowing me to do this. Acts of worship and pastoral matters will be covered by our Ministry Leadership Team of: Revd Ylva, Revd Rosemary, Lyn Hayes, David Harmsworth and Vicki Young. Services will be covered on four Sundays by visiting priests; including the Archdeacon of Maidstone and the Chaplain of Benenden Girls' School. There will be a variety of styles of leading and preaching, which I trust will be refreshing for everyone, too. Deanery colleagues will also be covering some of the weddings in the parish.

Administrative matters will be handled by the churchwardens: Sue Fisher and David Collard in Benenden; and by our parish administrator, Cathy Baker. Please contact the churchwardens, in the first instance, if you have issues relating to church matters. Baptisms, weddings, and funerals will continue as normal in this period. The only reduction in services is that from Sunday 3 July to Sunday 2 October, the 8am Communion services will alternate between the two parishes. This is to reduce the workload on our two priests: Revd Rosemary (our 'PTO' - Permission To Officiate - who is 'retired') and Revd Ylva (our curate - whose parish ministry is part-time.)

So, as I set off on this holy trek, I leave you in good hands; and I leave you with my thoughts and prayers. I hope you manage to have a break over the summer and feel refreshed, too. I ask for your prayers, that this will be a time of renewal, of spiritual growth, and of refreshment. God bless.

Revd David Commander, Rector



WE ARE PLEASED TO OFFER

**SKILLED GARDEN
MAINTENANCE,
PLANTING & PRUNING**

BORDER DESIGN & ADVICE
SUPPLY OF OWN GROWN
TREES - SHRUBS -
CLIMBERS

WISTERIA A SPECIALITY

The Laurels Nursery, Dingledean, Benenden, Cranbrook, Kent TN17 4JU
Phone 01580 240463
www.thelaurelsnursery.co.uk

THE
CARRIAGE
HAIR STUDIO

t: 01580 854774

e: info@the-carriage.co.uk
w: the-carriage.co.uk

The Street, Benenden, Kent, TN17 4DB

The Bull at Benenden . *A warm welcome awaits!*

Bed & Breakfast?

We have 3 lovely bed and breakfast rooms.
They are available to view and book via our
website. (min 2 night stay)

Lunch or Supper?

New Seasonal Specials.
Bar Menu, Fish, Pies & Lots More!
Early booking advisable.



Sunday Lunch?

We are now serving our
Famous Sunday Carvery every week with a
selection of delicious roast meats with all the
trimmings and lashings of gravy!

Please call us to reserve your table. We look
forward to welcoming you all!

Vegetarian & Vegan diet catered for.

Telephone: 01580 240 054 for a table.

Please see our website for menus, opening hours & B&B Thank you

01580 240 054 . enquiries@thebullatbenenden.co.uk .

Instagram @bullbenenden

JACKSON-STOPS



LETTINGS AND SALES PROPERTY EXPERTS

Local Specialists with a Network of London & Regional Offices

FOR YOUR FREE MARKET APPRAISAL PLEASE CALL US



Lettings: 01580 720400

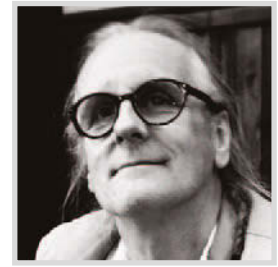
Sales: 01580 720000



cranbrook@jackson-stops.co.uk

www.jackson-stops.co.uk

Talking Point



Verging on the ridiculous

Residents of Benenden Village will have noticed, I'm sure, that some months ago, a very large vehicle (obviously far too large to negotiate the turn) took a huge bite out of the grass triangle on which stands the War Memorial. It's a start, of course, but much more could be accomplished with a little more effort.

Happily, many drivers nowadays seem familiar with that section of the Highway Code that states that if the carriageway is not wide enough for a vehicle to pass, the correct course of action is to attempt to widen it. This is best achieved by using the weight of the vehicle itself to crush, destroy and obliterate anything at the edge of carriageway that isn't made of tarmac and concrete.

Of course, not all of us have vehicles capable of performing this task, so we must rely on those kind souls who have managed to procure a gigantic lump of steel-on-wheels heavy enough to annihilate the offending vegetation.

Occasionally, we may be fortunate to have two such vehicles reach the same narrow point at exactly the same time. When such a cosmic alignment occurs, both sides of the carriageway can be pummelled simultaneously, provided neither decides to pause and reverse into a passing place. Thankfully, few drivers have the patience (or possibly skill) required to perform such a manoeuvre and so, over time, with unsightly grasses, horrible orchids and pesky primroses packed firmly down into a muddy pulp or embedded in a bone-dry slab of compressed dust, there will soon be room for two vehicles to bowl past one another with barely a scrape of paint lost from each wing mirror - a small price to pay for the freedom of the road, I'm sure you'll agree.

Now, if only we could do something about the awful pothole situation. Whenever I see those people from Kent Highways coming down my lane with their spray paint, pointing out the worst offenders, my heart sings! For, however Canutian their efforts, it means that for the wonderful, yet brief, span of existence of that little scrape of blessed tarmac jammed into the collapsing carriageway, drivers are once more free to hurtle unhindered around the countryside.

Unfortunately, it is the way of things that doing so causes the road surface to once more succumb to the highway equivalent of dental caries. And, until the next appointment for a filling, drivers are once again put to the dreadful inconvenience of driving with care.

Isn't it about time Kent Highways realised that motor vehicles make our country lanes and byways what they are? I call upon everyone to lobby the council to: carry out a programme of thorough and permanent resurfacing; widen our ridiculously narrow lanes; prohibit pedestrians, cyclists and riders getting in our way; and cut back all vegetation that prevents drivers from having to slow down in order to see what might be ahead.

If we don't do something our country lanes are in danger of returning to what they were like 50 years ago. And who wants that?

Dream Big, Shine Brighter

An incredibly nurturing day and flexi-boarding
school inspiring 3-13 year old boys and girls
to fulfil their extraordinary potential.
dulwichprepcranbrook.org



Dulwich Prep
Cranbrook



Residential Sales • Management and Lettings

01580 242700
wealdproperty.net



Recently SOLD BENENDEN £775,000

**LEADERS IN
LOCAL PROPERTY
SINCE 1985**

Weald Property has been successfully handling exceptional local Property whilst supporting the villages of Benenden and Rolvenden since 1985. Offering a complete, professional and personal service in Residential Sales, Lettings and Property Management Agency, our successful and unique approach is not to be found on the High Street. Located at our inviting offices at Windmill Farm, Benenden Road, Rolvenden, we offer cost effective solutions for selling, letting and managing your Property.

To benefit from our 30 years experience leading the way in Wealden Property, please call Alex Hill on 01580 242700 for a complimentary market appraisal.



Recently LET ROLVENDEN LAYNE £3,250 PCM



2 Windmill Oast, Windmill Farm,
Rolvenden, Kent TN17 4PF

Beer tasting

Tickets for the Old Dairy beer tasting on Friday 8 July at Benenden School are selling well and we are now able to finalise food details. Due to the lack of kitchen facilities at the school out of term time, we have decided to ask all our guests to BYOP: Bring Your Own Picnic.

We're hoping this will help create an appropriately summery atmosphere, as we spill out onto the terrace (weather permitting) and enjoy a range of beers from our favourite local brewery in a convivial ale-supping environment, with some knowledgeable chat from an Old Dairy expert. Look forward to the pick of their range of excellent brews, including a couple of barrel-aged specialities.

Tickets are on sale at the community shop at £15 each, cash with order, please. It would help if you could leave an email address on the booking form in case we need to contact you.

Please arrive at 7pm for 7.30pm and enjoy a first bottle before we get down to the serious business of tasting.

Peter Thomas 07766 420254

Volunteer drivers needed

Some time ago a group was set up of drivers who were willing to take Benenden residents who do not have their own vehicle and for whom other means of transportation are either impractical or unaffordable, to local hospital or doctor appointments. I have volunteered to coordinate this scheme and get it up and running again.

The key ingredient for this is, of course, volunteers willing to give their time occasionally to drive patients to and from appointments in return for a contribution towards fuel. If you would be willing to participate in this vital local initiative, please let me have your contact details, preferably via email. As soon as we have a viable pool of drivers in place, I'll let everyone know in this magazine how to access the scheme.

Mick Moore 240755

m.moore131156@gmail.com

Summer Drama Workshop

Benenden Players invite children aged 9-15 to join a drama workshop

**Thursday 4 and Friday 5 August
10-4pm**

Benenden Village Hall

Under the expert guidance of **Tony Ceeney**, who has taught drama for over 20 years. The students will perform to parents and guardians at the end.

The two-day workshop costs £10.

To book or for information call:

Ruth Clark 07767 261883

ruthbclark55@gmail.com

Benenden Players

We are very pleased that we will be running a Summer Drama Workshop in the village for children aged 9-15 over two days on 4 and 5 August. Under the expert guidance of our very own Tony Ceeney, who has taught drama for over 20 years, the students will learn performance and improvisation skills, ultimately creating scenes to perform to parents and guardians at the end of the two days. As well as being fun and creative, it will teach valuable acting and confidence-building skills.

The first day and half takes place in the Memorial Hall finishing with a half day and mini show in the village hall.

The two-day workshop (10-4pm) costs £10. To book a place or for more information please email or call me.

Ruth Clark 07767 261883

ruthbclark55@gmail.com



Become a host family for an international pupil at a local boarding school

To find out more call 01684 252757 or email
hostfamilies@pippasguardians.co.uk

Attractive daily rates
for occasional weekends
and half terms





Specialists in private garden design & construction

Creating beautiful gardens since 1963

Patios • Brickwork
Decking • Stonework
Ponds • Water features
Planting schemes • Groundworks
Detailed plans • Portfolio available
Free Consultation

07595 024330
01892 722412

www.greenacrelandscapes.co.uk
Furnace Lane Nursery, Furnace Lane,
Brenchley, Kent TN12 7BX

ANTIQUE FURNITURE RESTORATION



MICHAEL GOATER
Fully accredited member
of BAFRA

01580 212234
mgoater.restoration@gmail.com

Private Care Service



**Domestic
Care
£9.77
per hour**

Our Private Care Service offers tailored packages of personal care that can help people stay in their own home for as long as possible, rather than going into a care home before it's really needed. We assist those who need help due to frailty, disability or illness to live as independently as possible, with comfort & dignity, in their own home.

www.townandcountryhomecare.co.uk

For a free assessment
of your care needs or to
receive your brochure
Call us on 01580 762244



Town & Country Homecare Limited
102a High Street, Tenterden, Kent TN30 6HT

Holly's Funerals

Modern, Beautiful and Bespoke Funeral Choices

Everything we do comes from a
place of love and understanding

We provide a highly flexible and
personal service to help you
create exactly the right funeral
for you and your family

Please call for a friendly, informal
chat or to make an appointment

01580 389184
www.hollysfunerals.co.uk
Hartley Dyke, Cranbrook

Benenden Village Trust

A new all-weather pedestrian path, wide enough to accommodate buggies, now links Benenden playground with the village hall car park, allowing children and their parents to avoid the risk of soaked or muddy shoes when getting to the play equipment. A spur south from the main path runs to the rear gate of the primary school, linking it more effectively with the playground and car park than the old grass track that it replaced.

The improvement was carried out by the BVT, working in collaboration with the primary school, which funded the section from the edge of the recreation ground to its gate. This follows the BVT's recent addition of two new benches just outside the playground and the re-siting of a third bench inside the playground to give parents better sightlines over the play equipment for younger children. A fourth bench will be installed just outside the western perimeter of the playground.

Unfortunately, a large oak tree that stands halfway down the northern, Rolvenden Road side of the recreation ground has to be felled because of its potentially dangerous condition. The tree is in major decline, with increasing amounts of dead wood and visible decay at the base, making it a possible risk to the public and the road. The move follows a survey by BVT of all trees on the Benenden and Iden Green recreation grounds to ensure they undergo a systematic programme of management. The oak had a tree preservation order attached to it but planning approval for the felling was granted after consideration by the Tunbridge Wells Borough Council Tree Officer.

The oak may be replaced with a young sapling. If so, we must hope it does not meet the fate of a sapling planted a year ago in place of a felled chestnut on the eastern side of the recreation ground. It disappeared - either stolen or ripped from the ground by a vandal lacking community spirit.

Martin Dickson



**JAZZ & BLUES
AT THE PAVILION**

**SATURDAY 2.30PM
3 SEPTEMBER**

Pimm's & Real Ale
BBQ
Bring a picnic

Tickets £9 from Benenden's
Community Shop or £10 at the gate
Children under 12 free
All proceeds to charities

Iden Green and Benenden WI

We are excited to announce and invite you to a free WI evening social, to be held at the Memorial Hall starting at 7pm on Tuesday 5 July. We hope that people will turn up as soon as they are able and join in with our craft, cake and chat. Come, make new friends and have fun.

Our decorated stall at the village fete was well received and, apart from having a Bring and Buy for church funds, we also enjoyed showing our fabulous artefacts and memorabilia. We are pleased that several ladies became interested in joining us in the future.

Our 100th celebration garden party was also a success, and everyone said that they enjoyed the well-attended event.

Members met at 11am at the entrance to Pashley Manor on 29 June and enjoyed a celebratory visit to Pashley Manor. They enjoyed the beauty and fragrance of the many roses in bloom.

On 19 July we are looking forward to welcoming Chris O'Donohue to the Memorial Hall at 2pm. He will be telling us about the potteries at Rye.

Jackie Liffen 752232 WI@daisystar.co.uk

APPLE PIE FARM STORAGE

Short and long term storage requirements solved!



Storing furniture ? Re-decorating ? Uncluttering ? Renting your house out ? Ideal for storing garden machinery, sports equipment etc.

Talk to us about our storage, delivery and collection of your accounting data.

Speak to us on **01580 388754** or visit our website: **www.apfcontainerstorage.co.uk**



UNIT 14 APPLE PIE FARM, CRANBROOK ROAD, BENENDEN, TN17 4EU
Telephone: **01580 388754** • Mobile: **07515 649688**



A beautiful collection of rustic & vintage furniture and accessories available to hire for any location or event
www.village.vintage.co.uk

R.M Sports Therapy

Get your aches & pains eased by a professional, fully insured Graduate Sports Therapist in Benenden.

Injury assessment, massage, stretching, cupping, taping & exercise rehabilitation.

Reduce pain, improve your flexibility, strength & posture with Rebecca Manford

(BSc Hons MSST) **07923 965601**



BEACON HALL HOUSE

LUXURY BED & BREAKFAST

Visit England 5* Gold with breakfast award

Julie Jex: 01580 240434 | jjjex@icloud.com
www.beaconhallhouse.co.uk

A delightful country home offering 5* bed and breakfast with a touch of luxury to visitors wishing to enjoy the beautiful Kent countryside.

Set within 7 acres of mature elevated gardens and paddock with splendid views over beautiful Wealden countryside.

Enjoy a swim in our heated outdoor pool (seasonal) or a game of tennis on our court within the grounds.

Relaxed evening suppers available by prior booking.

POGLE'S GARDEN MAINTENANCE

Mowing
Strimming
Hedge Cutting
and more



Please call
Sue and Andy
01580 241792
07887 997551



Help is on hand from your local Mind

www.westkentmind.org.uk
01732 744950

Information given, volunteers welcome and donations needed.

We're here to make sure anyone with a mental health problem has somewhere to turn for advice and support.

Private Tuition

Remote Sessions
Now Available

Boosting Confidence & Developing Potential
With Clare Leek

clare.intuition@btinternet.com

07711 619536



Primary Subjects
Singapore Maths
French



The Care Company

Caring for you at home

Inspected and rated

Good



Well established, family run business, providing care for people living in the Weald of Kent. Our tailored service allows you to live at home with independence and dignity. Call Karen Irving at our Tenterden office to arrange a no obligation visit.
01580 762202
www.carecompany.care

Letter to the Editor

Please write to the Editor,
c/o Community Office, Benenden Village Hall,
Benenden TN17 4DY or email
benendenparishmagazine@gmail.com

IN PRAISE OF GLASS BOTTLES

With reference to my 'Talking Point' in the June edition, my opening lines regarding doorstep milk deliveries were intended to highlight the depressing fact that across the UK 97% of retail milk is purchased at the supermarket in plastic cartons, a far cry from my childhood days. I should have mentioned that our village is atypical, thanks to Hinxden Dairy Farm, who have been delivering milk to the doorstep since the 1980s, with over 1,500 customers purchasing their fresh milk in glass bottles, which are collected, sterilised and used again and again. I wish to apologise for this omission.

Tim Maw

Benenden Pre-School

The children enjoyed celebrating the Queen's Platinum Jubilee. We looked at photos of the Queen throughout her time as monarch, featuring different crowns. The children delighted in decorating crowns for the Jubilee, so much so that they are busy making another, each hoping to be the shiniest jewel in the village fete crown competition.

The children baked banana muffins to celebrate, measuring ingredients carefully, cracking eggs and mashing ripe bananas: all steps in our curriculum goal of following a recipe to bake a cake.

One of the lovely mums from our fundraising team organised a celebratory Jubilee T-towel featuring a handprint from each of our 33 children. It is a colourful commemoration of the Queen's amazing 70-year reign as well as a wonderful memento for the 15 children who will be leaving us in July to start primary school.

Lucy Oakley, Supervisor
supervisor@benendenpreschool.co.uk

Benenden Cricket Club

Benenden have been enjoying superb form so far this year and this winning streak has continued, seeing us win three out of four games played this month.

We played Mountfield on 28 May on a dark and cold morning and sadly the game didn't really cheer much either. Both sides started slowly, though the game was swung by Mountfield's R Marchant, generating a champion's innings by endeavouring to hit every ball for a boundary, especially when the author of this column was bowling!

A frustrating loss was greatly improved a week later against the Hastings and Bexhill Barbarians, which was the first home game in three weeks. Much better weather over the Jubilee weekend saw the Brunt brothers (Copter and William) accounting for half of our runs, plus a first 50 for Tom Mawhinney and a convincing win for Benenden.

Playing Sissinghurst a week later on 12 June, we were treated to another commanding performance by Benenden, playing at their best with both good humour and sportsmanship.

Unfortunately, our home midweek games have been postponed this month and our next midweek T20 game will be against the Goudhurst Gentlemen on Wednesday 6 July (6pm start). Join us to share a BBQ and beers on the square and cheer on the Benenden Burglars. (Not many realise that our midweek team always play each game with a different alliterative name).

PS We are always on the search for new players of all standards, so anyone wanting to play cricket on The Green, where it has been played since the mid-1750s, please call me.

Our home fixtures for July on The Green are:

Wednesday 6 July v Goudhurst Gentlemen
at 6pm

Saturday 9 July v Smallhythe at 2pm

Barry Bassett 240901

If you are
thinking
of selling or
letting your
property...

Call the
experts!

**hobbs
parker**



Sarah Holgate (Ashford)

01233 506260

Simon Godfrey (Tenterden)

01580 766766

www.hobbsparker.co.uk



**FEELING LONELY OR ISOLATED?
NEED TO CONNECT WITH OTHERS?**



Join our weekly Zoom chat groups.
Open to anyone aged 18 and over.

If you're not on the internet, we also have
face to face 'Circles of Six'
[adhering to government guidelines].
Once lockdown is over we will resume
our other regular activities.
Please check our website for full details
and other useful resources.

www.wellbeingintheweald.co.uk

email hello@wellbeingintheweald.co.uk
or leave a message on 07961 669 575

Promoting health and wellbeing to build a stronger community

Charity No. 1190083

Helen Grant

**MP for Maidstone
and the Weald**

I am here to help you in any way that I can.
If there is an issue of concern to you, where
you believe I can assist, or if you would like
to arrange a meeting with me, please email
me at helen.grant.mp@parliament.uk
or telephone **020 7219 7107**.



helengrant.org



@HelenGrantMP



helen-grantMP



Promoted by
Helen Grant MP, of
House of Commons,
London SW1A 0AA



**Topsoils | Composts | Barks
Decorative Stone | Aggregates
Small Bags, Bulk Bags
or Loose Loads**

Delivered throughout the South East

gardenscape

Freephone 0800 854663

www.gardenscapedirect.co.uk

sales@gardenscapedirect.co.uk

The Wharf, Rye Road, Newenden, TN18 5QG



**Hannah's
Garden**
www.hannahsgarden.net

SCENTED AND SEASONAL
ABUNDANT VARIETY
ENGLISH GARDEN FLOWERS

WEDDINGS + BOUQUETS + DIY + ONLINE
CALL: 07958 081915

Planning Matters

For full details of the Parish Council's comment please see minutes of meetings.

- 22/01283/FULL Gable End, New Pond Road. Proposed first and second floor extension including hip to gable extension with associated internal alterations.
- 22/01186/FULL Apple Garth, Cranbrook Road. Erection of single-storey front extension, re-submission of expired application 19/00425/FULL.
- 22/01352/FULL Hengist House, Rolvenden Road. Alterations to approved application 20/00871/FULL & 17/02968/FULL (Alterations to external materials, Alterations to proposed extensions, Erection of conservatory).
- 22/01269/FULL Beacon House, Rolvenden Road. Change of use of existing outbuilding to a residential dwelling.
- 22/01540/FULL Hilltop Cottages, Dingledean. Proposed single storey rear extension.
- 22/01634/LBC Forge House, The Street. Replace wooden bay window with new double glazed wooden bay window, with the same dimensions and shape.

More planning matters at:
benendenparishcouncil.org

Village lunch

The village lunch will take place on Tuesday 19 July in the village hall at 12.30pm. £5 each and all welcome. Please could you let me know if you would like to come by Thursday 14 July, so we can plan and shop, as well as cook.

Genevieve Greenwood 240526

Local summer pilgrimage

Following the Spring Pilgrimage, which was greatly enjoyed by all who took part, we, Lyn and Revd Ylva, are organising a Summer Pilgrimage on Wednesday 27 July. This is another opportunity for you to connect: with the landscape, yourself and the Spirit. We will do this through poetry, stillness, short reflections and conversations along the road.

We will start (meeting at 9.45am) and end (around 4pm) at St Nicholas Church, Sandhurst. Our route will take us through Bourne Lane, down through fields and woodlands to Bodiam Castle, stopping at the Castle Inn for lunch. Then we walk along the River Rother, turning up through the fields and lanes and finishing back at the church with a cuppa and a slice of something homemade. The whole route is about 8.5 miles, with many stopping points. Stout footwear, a walking pole and perhaps a raincoat are all that is needed.

For those of you who want a shorter walk, or have not got all day free, you can join in the morning, then be taken back to the church before or after lunch by relay car. Alternatively, meet us at the Castle Inn at Bodiam before or after lunch, then be driven back to collect your car at the end.

We would love to walk with you.
Please contact me for car arrangements.
Revd Ylva 01233 820100 or 07766 711957
rev.ylva@gmail.com

Bric-a-brac stars

Hearty thanks for the efforts of all our stall members, with added generosity of Lalage and Bud. What a result and what a team!

Maggy Hoyt

David Hopkins

Groundworks Ltd.



Domestic & Commercial

**Sewage Treatment Plant
Installer Specialist**

- Foundations • Land Drainage •
- New Sewage Treatment Plant Installer
- Excavations • Ditching • Ponds •
- Drives • Landscaping •

**Is your septic tank compliant
to the latest rules?**

We install all types of systems, either for new builds or we can upgrade your existing one to meet your growing needs and to ensure it meets the latest Governments' Discharge Rules.

For more information: www.sewageplants.co.uk

Tel: 07717 712083

Everything **Outside**

Complete Garden & Fencing Solutions

Fencing • Mowing • Hedge Trimming • Turfing
Clearance • Landscaping • Gardening • Digger Work
Concreting • Tree Surgery • Pressure Washing
Patos • Decking • Pergolas • Driveways

01580 766 232 07795 465 861



Find us on
Facebook

www.everythingoutside.co.uk

EST



2014

argo life & legacy

Caring for someone can be difficult...

it doesn't need to be
Life can be so much easier

Call our team on

01580 766135

Weald of Kent office



info@argolifeandlegacy.co.uk
www.argolifeandlegacy.co.uk

We can help

Wills

Trusts

Probate specialists

Life & Tax planning

Lasting Powers of Attorney

Social care advice

Carer Support

Benenden School

I hope you had an enjoyable Jubilee weekend with your families. The Price family were busy celebrating with, among other activities, a royal-themed sandcastle-building competition (we didn't win - our efforts were pipped by the spectacular replica of Buckingham Palace that another entrant somehow created!).


As I explained to the students, I can think of no better role model for young women than Her Majesty The Queen, who has dedicated her entire life to serving her country and has offered unwavering leadership for 70 years, with no fewer than 14 Prime Ministers serving her during her reign.

It has been a busy start to the second half of term, with our Upper Fifth and Six Two concentrating on their public exams. In their Enquiry Week the Lower Fifth have been exploring life in the early 1920s, while the Fourth and Upper Fourth have returned from an exciting week of outdoor activities such as raft building and climbing, which have certainly pushed them out of their comfort zone and tested their skills of teamwork and resilience.

We are delighted to have been in a position to welcome four Ukrainian refugees to start with us at Benenden. Three of the girls are now living with host families locally, while the fourth is boarding with us. Needless to say, these girls are having to come to terms with an enormous amount of change in their lives but they are settling in to Benenden well, and of course our pupils are being as supportive and welcoming as we would all expect.

The final few weeks of the academic year are already upon us and there is a great deal to look forward to. Most notably, the final touches are being carried out in the new Centenary Buildings, ready for the end-of-term events, and we very much look forward to touring the local community around these spectacular facilities soon.

Samantha Price, Headmistress



**The Rhythm
of Life**
*Community
Choir*

Benenden Church
Thursday morning
10-11.30am
during term time

ALL WELCOME
£45 per term

To book your place call
Carla on 07743 430 797

Merry and Bright Club

It wasn't long ago that we were worried that with only five members we would have to close the Merry and Bright Club, which started many years ago in 1953. Many thanks go to Joan Hagan and Bonny Sullivan who took on the task of saving the club, and I'm very pleased to report that we now have over 20 members and growing. Also, our new committee members have brought new ideas for our monthly meetings.

This is a club for men and women, not just those who live in Benenden, and there is no age limit. We meet every fourth Tuesday of the month in the Memorial Hall from 2-4pm to enjoy a variety of arts and crafts demonstrations or an interesting speaker, following by a delicious homemade afternoon tea with sandwiches, scones, cakes and more. We look forward to welcoming new faces at our next meeting on 26 July.

Laraine Penny 241703



Why not consider micropigmentation to boost self-esteem and maybe even restore confidence?

My treatments include:

Permanent makeup for brows and eyes
Brazilian scar and stretch mark treatment & camouflage
Hair loss camouflage for women and men
MESO needling and peel to improve skin tone & texture,
fine lines & wrinkles, pigmentation, and acne scarring

**A TWEAK
TO CHANGE
YOUR LIFE?**

Contact me today
for more information
or to book a free, no
obligation consultation

lorrainesinclairpmu@gmail.com
07721 880114
01580 720586

Geoff Tiltman

**Gardens & Groundworks
City & Guilds in Horticulture, NCT
Creating Gardens of Distinction**

Drives, Patios, Walls, Fencing, Pergolas,
Turfing, Regular Grass Cutting,
Unruly Gardens Made Tidy,
All Garden Construction and
Garden Maintenance Work Undertaken

Free Quotations - Keen Prices

Smarden 01233 770777 - 24 hours
Mobile 07775 694 963
geoff.tiltman@gmail.com

**EMPLOY A QUALIFIED CONTRACTOR AND
SEE THE DIFFERENCE IN YOUR GARDEN**

 **Idea
Landscapes**
Jay Weekes
IdeaLandscapes@gmail.com
01580 389531
07720 817577

Hadlow trained and experienced in
Soft Landscape and Landscape Construction
COMPETITIVE PRICES

Border design
Aspects of outdoor woodwork and treatment
Winter garden (one-off blitz)
Garden regeneration
Hedge planting/cutting
Fencing
Turfing
Fruit tree, rose and vine pruning
Regular maintenance (including mowing)

See above for contact information
and feel free to contact for
more details, quotes and prices.



**PROUD TO BE SERVING THE
COMMUNITY SINCE 1852**



**Your fully independent, family owned, Funeral Directors
serving the local community with compassion and the
highest standards of service and professionalism.**

**With our 24-hour emergency service, we are only
a telephone call away.**

**At the earliest stage possible, you will speak directly
with one of our experienced Funeral Directors, who
will be there to help, support and guide you through
the whole of the funeral process.**

Golden Charter
Funeral Plans 

Bank Street, Cranbrook, Kent TN17 3EF.

01580 713636

Dixter Road, Northiam, East Sussex TN31 6LB.

01797 260316

enquiries@jperigoeandson.com

www.jperigoeandson.com



J. Perigoe and Son is a Trading Division of
West & Coe Limited, 602 Rainham Road South,
Dagenham, Essex RM10 8YP.



 **Nourish**
Community Foodbank Charity Number: 1154716

Short term emergency
food and support for
local people in crisis.

**Please text FOOD35 £3
to 70070 to buy a meal
for someone in crisis**

Please look at the website for details on
how to apply for food. Nourish does cover
the Benenden area, meaning deliveries can
be made to your home.
For information call 01892 548892
www.nourishcommunityfoodbank.org.uk

Primary School

During half term, the whole country celebrated the Queen's Platinum Jubilee and it seemed very fitting that we too joined together as a community to celebrate this momentous occasion. Indeed, it was an absolute joy to be able once again to open our doors and welcome so many parents, grandparents and members of the community to our end of term celebration assembly and open morning.

Mr Goodman reminded us that in 2004, during the Queen's speech to the nation, she talked of the importance of faith in her life. In particular, she explained how Jesus' story about the Good Samaritan had influenced her.

In the story of the Good Samaritan, Jesus tells us about someone who helped someone else, and treated them with care and respect, even though they were from a different country and religion. We thought about how the parable is important in our school and how it frames our school values of curiosity, compassion, courage and commitment.

Our visitors then freely visited all the classes and experienced the breadth of our curriculum. There truly was a wonderful community feeling in the air. The day concluded with an amazing jubilee tea party; the playground was adorned with bunting, the children enjoyed a whole school tea party with live entertainers and had lots of fun courtesy of our amazing PTFA. Events such as these I believe are very special and I know the children will treasure them forever.

Lindsay Roberts, Executive Headteacher
240565 office@benenden-cep.kent.sch.uk
www.benenden-cep.kent.sch.uk

Parent, Teacher and Friends Association

We are excited to announce that we have launched a new crowdfunding page on the platform GofundMe to be able to raise funds towards outdoor play resources for our school children. We would love to add a new clamber playing frame to be enjoyed daily by all, and as a next phase, we would also love to co-fund and invest in a future wellbeing and 'reflection garden'.

Studies show that outdoor learning delivers many benefits, reducing stress, boosting concentration, and increasing a child's engagement at school, and it's fun! These resources will support our children's mental wellbeing and physical health, help build teamwork and foster friendships.

If you can, please do support our initiative, Thank you for any support you can give. Just use this link to access our funding page.
www.gofund.me/80bf4556

Each class has organised an ice lolly sale in the past weeks and months. All the funds raised are going towards camping equipment for the children to use during a whole school sleepover organised by the staff: a fun summer evening and night that will leave a wonderful memory for a long time.

For more details on activities or how to support, please scan QR code or go to our website
www.sites.google.com/view/benenden-ce-primary-ptfa

Astrid Miller, Benenden CEP, PTFA Chair



Topical health

Chronic Obstructive Pulmonary Disease (COPD) is the second most prevalent lung disease in the UK after asthma. It is so prevalent that it affects around four in 100 people over the age of 40. COPD is a catch-all term used to describe several lung conditions including emphysema (essentially damage to the air sacs in the lungs) and bronchitis (inflammation of the airways). Most people living with it have both of these issues to some extent or another.

People with COPD become breathless when they are active and live with a persistent chesty cough, recurrent chest infections and a persistent wheeze. It is mainly caused by smoking although other causes are related to environmental hazards like exposure to smoke, fumes and dust, and some COPD is genetic.

The best treatment is stopping smoking. On a day-to-day basis, most people living with the condition need to use inhaled medications including short-acting airway dilators like salbutamol (Ventolin) and terbutaline and ipratropium. Longer-acting airway dilators like salmeterol and Glycopyrronium are also widely used, sometimes with more than one drug type in an inhaler.

In order to treat inflammation, steroids - either inhaled or, to treat flare-ups, oral - are common. Other medications used to treat COPD include oral airway dilators, medication to thin mucus and antibiotics for chest infections. There is however an increasing emphasis on specialist exercise programmes, dietary changes and education. Living well with COPD is all about lifestyle, with a need for regular exercise, a good diet, maintaining a healthy weight, taking medication and being alert to environmental triggers like pollen and cold air.

Peter Ellis

Benenden Hospital

I find great inspiration in the historical events that have led to the success of our hospital's departments and services. Most recently, I've been reflecting on our Imaging Department and its specialist diagnostics suite, which offers patients a range of private scans, such as MRI and X-ray.

In 1946, Min Jackson, a committee of management member, led the Victory Fund Appeal. Its aim was to raise £40,000 to build a new hospital wing with 75 beds, an operating theatre, an X-ray department and more. After ten years, the final total was six times the original target: £231,577. To honour her work, Miss Jackson was awarded an MBE and one of our nearby roads was named Jackson Way.

With the fund's money, Benenden Health was able to extend the Lister Block to build the new hospital wing. In 1951, a diagnostic consultation service began to see success when a longstanding physician was replaced by Dr Lionel Houghton.

An X-ray machine was installed in the Catherine Place consultation room in London, which allowed Dr Houghton to see more patients. This diagnostic equipment gave patients who feared they may have TB, the reassurance of an efficient diagnosis. In his first year, Dr Houghton saw 44 members and by 1957, he had seen 435 patients. More recently, in 2014 the Benenden Health helped more than 56,000 members receive a diagnosis.

I'm proud of our expert Imaging Department team, who perform thousands of scans each year. They use modern technology to produce high quality diagnostic images that can be accessed by clinicians within seconds. None of this would have been possible without the Victory Fund and hardworking, dedicated staff.

Jane Abbott, Hospital Director and Chief Nurse

Village Hall

We're approaching the summer holidays, which means a change of pace at the village hall. Most of our lovely regulars will take a well-earned break while the children are out of school and the weather is (hopefully) at its best. This means that there is plenty of opportunity for bookings if you want to celebrate with friends and family or if you need something to keep the kids occupied. We regularly accommodate bouncy castles and Nerf parties in our main room, and have a superbly equipped kitchen for throwing together some sustenance to keep everyone fuelled up.

If hosting sounds like too much work, there are dance and drama workshops and football training camps on offer for the kids. If you're interested in either of these, or in booking your own event, please don't hesitate to reach out for more information.

I must also just take the opportunity to thank our exceptional caretaker, Karen. She has been an invaluable asset to our team over the past few years, continuously going above and beyond to take care of the hall and its hirers come rain or shine, late night or early morning. Karen is moving on to pastures new, so we wish her all the very best and bid her a fond farewell as she heads off.

Holly Clayson, Manager 07419 989830
enquiries@benendenvillagehall.org
www.benendenvillagehall.org

Benenden Bowls Club

On a sunny Sunday afternoon in June, 12 members of the bowls club entered the Pop Horton Cup competition. Following a full 18 ends, the scorecards were handed in and scrutinised during tea. There were seven players scoring between 18 and 23. In third place with 22 points was John Marshall and, because two players tied on 23 points and both had won 11 ends, a play-off was needed and Ben Bryant won, with Sally Cheeseman runner-up.

John Marshall johnm.jm41@gmail.com

Benenden Bells

We had an exceptional turnout of local ringers for the Platinum Jubilee service and beacon lighting on 2 June. It was the first time we have ever had 15 Benenden ringers in the tower together, so we were able to ring the full 12 bells for this memorable occasion, which probably makes us the largest rural parish band in Kent currently.

Several of the band have joined and started training over the past year, post Covid, a most welcome reinforcement to a local band always struggling for numbers, and a large commitment both by them and their instructors, to bring them up to ringing proficiency as soon as we can. Ages in the band range from the youngest at ten, to over 80 and still going strong, but more are still needed, please.

Rod Lebon

Hospice in the Weald Musicals

Welcome to our 14th season of Richard Beattie Davis Memorial Musicals, which has a distinctly French feeling. The garden party in aid of Hospice in the Weald will be, as always, on the final Saturday in July at 3pm. Hugo Philipeau will be making his English debut with a lovely selection of music, including Chopin, Debussy and Ravel.

The September Hospice recital will be at 3pm on Tuesday 6 September, when Sasha Karpeyev will be playing with François Pineau-Benois, our first violinist who is coming over from Paris. Sasha tells me that they are exploring the 'Belaieff' composers, which thrills me - possibly inspired by Richard's book 'The Beauty of Belaieff', the definitive study of the Russian music publisher. They will be playing Rachmaninov, Prokofiev, Glazunov and more.

Tickets will only be sold in advance. Please contact me for reservations:

Gillian Davis 850384 gillian@wimbourne.com



The Traditional Verandah Company



For over 20 years, our family business has been creating unique, handmade structures for our clients all over the UK.

We offer a fully inclusive service, from initial design right through to the installation on your chosen structure.

We have extensive experience of working with builders, architects and other trades, and we can install any necessary foundations for your new structure as part of your installation.

We are members of the Glass and Glazing Federation; The Guild of Master Craftsmen and we proudly carry the Made in Britain mark.

Our existing clients have rated our company as excellent on Trustpilot, so you really can purchase from us with the utmost confidence.



www.ttvc.co.uk
01580 854891 sales@ttvc.co.uk



Benenden Fete



Our wonderful fete

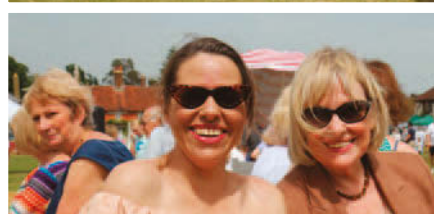
All the ingredients for a perfect day: sunshine (mostly), treasures, fun and games, music, magic, dancing, delicious food and drink, and above all ... friends and family.

Thank you Benenden.

Athena Cripps

Photographs with thanks to:

Beth Ansell and Amelia Thomas





Hand-Finished Curtains
& Blinds
Fabrics & Poles
Upholstery & Loose Covers
Wallpaper & Paint
Lighting & Carpets

The Paper Mill Oast Benenden Kent 07930 507047

@lucyandrewinteriors ~ lucy@lucyandrew.co.uk ~ www.lucyandrew.co.uk

PERSONAL & GROUP TRAINING FOR WOMEN

Build strength, boost bone health, improve mobility and balance and feel good in your body. Tailored for all life stages, including pregnancy, postnatal, and pre, peri and post-menopause.

Elizabeth // Benenden



www.thiswomanlifts.com

from fixing leaking taps to complete kitchens & bathrooms ~ radiator cleaning & maintenance ~ tiling ~ curtain poles ~ swimming pools & locks ~ doors & locks ~ general carpentry ~ paintwork repairs ~ fencing ~ patios ~ mowing ~

Pipes & Nails

- Home • Garden •

**Property Maintenance
Plumbing & Handyman Service**

Local & Trusted
~ We'll take *care* of your home ~
Fast, local emergency help.
No job too small.
No call-out charge.

Chris Leach 07919 143755
leachfamily@gmail.com
www.pipesandnails.com

MR NOAH'S NURSERY SCHOOL cic

<https://mrnoahs.org>

Benenden's

SHOP POST OFFICE CAFÉ

B's

... it's the word on The Street!

An excellent range of groceries, breads, vegetables, beers and wines and with Post Office services ...

For those who are self-isolating and have no one to shop for them, we will be able to take orders and payment over the phone. We can also supply frozen ready meals with instructions. Please note the opening hours: 7.30am-5pm Monday to Saturday and 9am-1pm on Sunday. Café open 8.30am-4.30pm Monday to Saturday for takeaway drinks, hot snacks and some cakes, with outside tables for service.

info@benendens.co.uk

Tel: 01580 279808

Hot Topic

Help! Your shop needs more volunteers

Without the band of volunteers giving just a couple of hours a week, the shop could not function as it does and with the holiday period approaching, extra help is very much needed. Bev Beveridge spoke to a few of the regular volunteers who help keep Benenden's going about why they volunteer and what they enjoy about the experience. Could you spare a couple of hours a week to join Benenden's community shop's team of volunteers?

Cathy Woods: Having moved to the village in June 2020, I started volunteering at Benenden's that August. It's been a wonderful way to integrate into village life and at the same time give back to the village community. It is always fun and every shift is different. We'd love to welcome new volunteers to join our happy team.



Mo Smith: I like being involved with the community. It's a real tonic to work with a fun team.



Robin Dalton Holmes: I have helped to open up the shop at 7am until 9.30am every other week since it opened in the Kitty Fisher. It is a cheerful task chatting to many regulars whilst sorting out the early arrival of bread, milk, papers and vegetables, and serving at the counter.

Mo Manning: It's a real community café. I love meeting the locals and giving them a warm welcome.



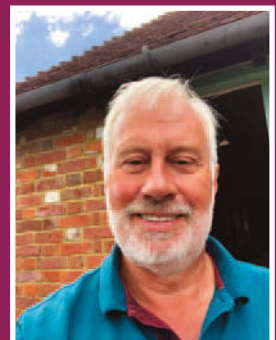
Heather Robins: Since volunteering I've met more people in the village than by any other means.

Sue Impson: We've recently moved back from South Africa and volunteering at the shop is a lovely way to feel part of the community.



Glenda Marshall: I love meeting lots of members of the public.

Phil Robins: Living at Great Nineveh we are a bit remote from village life so being able to help with the village shop has given us an opportunity to meet people from all around.



Bev Beveridge: For myself, I find a constant source of warmth and friendliness. So please pop in, sign up and join the team.



OFFERING LONG-TERM RESIDENCE,
CONVALESCENCE & RESPITE CARE
FOR INDIVIDUALS AND COUPLES
WHO VALUE PRIVACY, LUXURY
AND HAPPINESS

PEASMARSH PLACE For Brochure & Details

Church Lane, Peasmarsh, Rye, East Sussex TN31 6XE Tel: 01797 230555

Theobald Upholstery Established 1975



*Professional and
traditional upholsterers*

*Most types of furniture
re-upholstered and repaired.
Cushion interior replacement
service, antique restoration,
stockists for DIY enthusiasts,
extensive range of fabrics.*

Workshop 5, Slaney Place Farm
Headcorn Road, Staplehurst, Kent TN12 0DT

www.theobaldsfurniture.co.uk

Tel: 01580 890055

WOW

WOODFIRED OVEN WONDERS

**A Wood Fired Oven can provide
fantastic, fresh and fast food for you
and your guests.**

We are local to Benenden and can cater
for private parties, wedding receptions
and events of all kinds.

Most people only think of pizza, but
there are lots of alternatives.

Give me a call to discuss on:
01580 279000 or 07788 279000
info@wowcooking.co.uk

or visit our website
www.wowcooking.co.uk

P.F. WARD & SONS FAMILY BUTCHERS

FRESH LOCAL
PRODUCE

VARIETY of HOME
MADE SAUSAGES
& BURGERS

Phone: 01580 240612

Webb's

45 & 51 High Street
Tenterden

Hardware, Garden and Cookware Specialists

Webb's Ironmongery Stores (Tenterden) Limited

HARDWARE and DIY

Specialists in power, hand and garden tools, plumbing, decorating sundries,
lawnmower repairs - brand new showroom

KITCHENWARE

Cookware specialists, garden furniture and barbecues
Gifts with a difference. Free gift wrapping

HOME and LINEN

Beautiful bed linen, towels, table furnishings,
babyware department and quality toys

**We guarantee you will not leave
Webb's empty handed!**

Tel: 01580 762132 email: mail@webbsoftenterden.com Website: www.webbsoftenterden.com

T.W. FUGGLE & SON

FAMILY FUNERAL DIRECTORS

Private Chapels of Rest 24-HOUR SERVICE

All arrangements undertaken with personal attention

Pre-paid funeral plans arranged through Golden Charter

20 Ashford Road, Tenterden - 01580 763340 - www.twfuggle.co.uk



ANITA MEEKINS PRIVATE HIRE

FIRST CLASS SERVICE

Ordinary & Executive Vehicles
& 8 seater minibus with seat belts

All drivers & vehicles
licensed & tested

Long & short journeys
& courier service available

Business accounts welcome

Tel: 01580 240713
Mobile: 07774 672 043

anitameekinsph@btconnect.com



PETER CHRISTOPHERSON

Expert Mortgage Advice
30 Years of Experience
Tyler Mortgage Management
L: 0207 48 49 207
M: 07909 562 579
E: peter.christopherson@tylermm.com

Clubs, Sports and Recreation

Community sport back on the table in Benenden

Ruth Clark talks to Diccon Grey about the return of table tennis to the village

It's very good news that the Weald Table Tennis Club, which started in the village hall as Benenden TT Club in 1994, has returned to its roots. The club, originally an initiative of Benenden residents Jeremy Harrington and Diccon Gray, moved first to Angley School in 2001 then to Claremont School in 2017 before Covid 'stopped play' in 2020.

Over the past 18 years the club has done a wonderful job not only of introducing children and adults to the joys of table tennis, but also developing players up to international level, under the expert guidance of coach Ken Muhr, who has over 50 years' experience. Ken will be on hand at Benenden's weekly Sunday evening sessions to provide encouragement and guidance. "We have started with open play on five tables, with the possibility of expanding into specific groups and junior coaching in the future," he explains.

Diccon is Benenden's very own table tennis champion and, once he retires later this year, will become more involved in the club. He has been playing most of his life, is still competing around the world, and is currently ranked number two in England's over-60 veteran



category. Earlier this year he won the National Championship (over 60s) and the over 50s doubles with Phil Cox. As this issue goes to press, he



National Champion Diccon Gray

will be competing in the over 60s singles and over 55 doubles with Phil in the European Championships in Italy, and in September he will head to the Isle of Man to represent England in the Home Nationals.

It must have something to do with the genes because Diccon's son Lewis also excelled in the sport as a junior player, becoming National Champion three times (under 10, 12 and 14 years) and playing for the England Junior squad.

"The club is open to players of all abilities, from beginners and recreational to advanced," stresses Diccon, also a qualified coach. "I'm delighted that the club is 'coming home' and our focus is very much on providing a community sports club for those interested in having fun, some exercise and perhaps going to the pub for a drink afterwards."

The session fee is £5 for seniors and £3 for juniors (under 18). Equipment will be provided if required and we recommend you wear loose clothing and trainers.

For further information please contact:

Ken Muhr 752676

Ken.Muhr@btinternet.com

Diccon Gray 07970 575285

Yoga with Naomi

Find strength,
space and
stillness in
beautiful
natural
surroundings



To book your place or
for more details email
naomifeatherstoneyoga@gmail.com
www.naomifeatherstone.co.uk

Tuesdays at 9.45am and 7.30pm
IN THE BYRE AT THE OAK BARN, FRAME FARM, BENENDEN

Fridays at 9.15am (Gentle) and 10.30am
AT THE IDEN GREEN PAVILION



75 MINUTE HATHA VINYASA YOGA
AND MEDITATION

ALL EXPERIENCE LEVELS WELCOME



- Professional • Friendly Service
- Fully Insured • One-Off or Regular

www.tn17dogwalking.co.uk
07719 070864

K JONES ELECTRICAL

Electrical and Solar Contractors
Accredited, qualified and trusted local
family business
for over 40 years
Free Estimates

01580 848118

kevin.kjoneselectrical@gmail.com

Benenden Village Hall

"Let your imagination run
wild – the hall can be anything
you want"!



Call Holly on
07419 989830 for details

www.benendenvillagehall.org



WEDDINGS & PARTIES

with elegance & rustic charm

From the magnificent, vaulted roof of The Oak Barn to the tranquillity of
The Byre with its stunning views, Frame Farm is perfect for your celebration.

Luxurious & award winning eco-venue



THE OAK BARN

Frame Farm

01580 441571 www.the-oak-barn.co.uk @theoakbarnff

Cat Simoni: putting on the Ritz in the village

The brutal impact of lockdown on those living in South Africa brought Cat Simoni, her three children Zac, Mia and Olivia and her parents Dee and Alex to Benenden. Cat is a professional musical entertainer and her work, as for so many working in the entertainment industry



around the world, immediately stopped. "With little employment and without government support many people suffered badly and the crime rate increased significantly," she says.

Her sister Sarah and partner Alexandra, living in London at the time, invited them all to make the move back to the UK, where the children were born and where Cat had lived for many years in the past. "I searched for a house that could fit eight and found the perfect one in Benenden and we moved here at the end of 2019," says Sarah. "It was a big upheaval for us all, but we couldn't have asked for a better village."

It didn't take long for everyone to settle in and get involved in village life and before long Cat started performing at The Ritz, The Lanesborough, the Dorchester and Trinity Square. Music has been a major part of her life ever since she climbed up onto a piano stool at nursery school at 18 months and accompanied the children singing. She is a gifted musician playing the guitar, violin, saxophone, piano and organ. "And there's really nothing that she can't sing," says her sister.

While she studied maths and chemistry at university and taught maths afterwards, it wasn't long until Cat decided to become a full-time entertainer performing across the UK, Europe, the Middle East and South Africa: "It's not an easy career but I love it and the support of my family makes it possible." She is amazingly versatile,

with the unusual ability to sing a wide variety of genres, and her repertoire spans pop, rock, jazz, country, golden oldies, musical classics and opera.

Cat's plan is to spend more time performing at weddings and functions locally. She likes to work closely with clients to develop a tailored playlist, interspersing songs with stories and memories to suit the occasion if wanted. "That works really well for milestone birthdays and anniversaries," she says. Alternatively, she

can perform a themed event, such as: 'Divas Around the World', featuring hits by Nana Mouskouri, Edith Piaf, Francoise Hardy, Ella Fitzgerald and more; as well as 'Wine, Women & Song': spanning songs by Marianne Faithfull, Janis Joplin, Nina Simone, Etta James, Amy Winehouse etc. These are just a very small taste of her impressive range.

I recommend that you visit Cat's website (www.catsimoni.co.uk) to browse the incredible variety of themes she offers and watch footage of her in action. Until recently you could often catch her singing live at The Bull's music evenings every second Tuesday of the month. At the moment she is performing on the Seabourn Ovation cruise ship but will back in the village in September. In the meantime, she can be contacted by email: catsimoni@gmail.com. Alternatively contact Sarah on 07949 255183.

Ruth Clark



Cat with her family in Benenden

Local History

Cranbrook Museum - something for everyone

Whether you're an art lover, you want to see how Cranbrook locked up its local troublemakers, find out where Elizabeth Taylor lived nearby or even trace your family tree, over 20 rooms of surprises await you in the heart of Cranbrook. Right now, they also need your help in identifying a recently donated item that's stumping experts - but more of that later.

Situated just off the High Street and next to St Dunstons, Cranbrook Museum ('and Local History Society' to give it its correct name) is housed in buildings dating back to the 14th century, surrounded by a garden lovingly maintained by its team of volunteers. But if you have expectations of dusty horse brasses and a handful of clipped roman coins, you'll be denying yourself a treat. This museum is rich in items that surprise and delight as well as illuminating your understanding of our local area. Entrance is free and, while I can only scratch the surface in this article, here is just a fraction of what you'll find, with something for all ages and interests.

ART LOVERS The museum holds over 200 oils, paintings and sketches, including works by the Cranbrook Colony, a group of six artists whose work was regularly exhibited at London's Royal Academy in the second half of the 19th century, drawing creative inspiration from the visual charms of an unspoilt market town.

CRANBROOK THROUGH THE AGES Discover Roman urns from 2,000 years ago and the story of how Flemish weavers settling in Kent from the 14th century started weaving broadcloth



and established Cranbrook's prosperity. You'll also find colourful exhibits reflecting all poles of society - from exquisite 19th-century 'Sunday best' costumes to relics of the harsh confines of the Cranbrook Union workhouse.

THE CURIOUS AND THE EMOTIONAL

You'll find the original 18th-century wooden lock-up used to imprison the guilty of Cranbrook, an extraordinary collection of birds from Victorian times, ice skates from the frozen lakes of the 19th century, barbaric man traps for catching poachers and moving memorabilia from two world wars.

THE CHANGING FACE OF THE HIGH STREET

Find out about the shops and wares that lined Cranbrook's High Street and met the changing needs of





the local community. You'll find out about 'the Great Fire of Cranbrook' and the birth of the Royal

Observer Corps in the White Lion Inn in 1925.

UNEXPECTED CRANBROOK Did you know Elizabeth Taylor used to have a home just outside Cranbrook? You'll find a signed photo of her as well as details of where she used to live. The museum also has the original projectors from Cranbrook's two cinemas, as well as playbills from our local theatre and even the sign from our very own local building society.

CHILDREN The museum also forms part of Kent's 'Wheels of Time' (wheelsoftime.uk), a fun, free scheme where children earn badges by visiting and taking part in activities at this and 40 other museums and heritage sites in the Kent area.

TRACE YOUR FAMILY HISTORY Because of its unique access to parish and wider local records on births, marriages, deaths and properties dating back hundreds of years, the museum also offers you the ability to build your family tree or find out more about your property

history. In addition to those living nearby, the museum regularly receives requests from visitors from the US and Australia keen to discover their family roots.

The museum is open Tuesday to Saturday from April to October between 2pm and 4.30pm and also on Sundays during August and Summer Bank Holidays. Due to the nature of the old building there is no lift and the upper floors are not accessible to wheelchairs. Disabled access and facilities on the ground floor only.

Cranbrook Museum,
Carriers Road,
Cranbrook,
Kent TN17 3JX
01580 712929
www.cranbrookmuseum.org
The museum is just a short walk from Jockey Lane free car park.

Mark Hollander



CAN YOU HELP US IDENTIFY THE MUSEUM'S MYSTERY OBJECT?

To date, the exact purpose of this recently donated item has stumped the experts at the museum. It is missing the handle-like part that mirrors the one on the right

Please email your suggestions and thoughts to: archives@cranbrookmuseum.org



So which EV to choose?

In May Peter Massey looked at the ins and outs of driving electric. Here he shares his experience of various models and what he ultimately chose.

The first choice is to avoid electric, go hybrid, plug-in hybrid or full electric.

Mild hybrid means that the car will have a very small battery to recapture breaking energy (regeneration). It will probably only run yards electrically. Many new petrol and diesel cars are now mild hybrids. A plug-in hybrid will allow you to travel electrically about 15 to 60 miles, depending on the car and battery size. Beyond this you use the traditional engine and fuel e.g. a friend has a 20-mile daily journey in her hybrid Mini. They seldom use the petrol engine. There are one or two now with 60-mile electric range such as the Mercedes EQS.

Full electric doesn't have the traditional engine and gearbox so has simpler engineering and more space. You use the regenerative braking when releasing the accelerator pedal and the brakes wear slowly. This leads to lower maintenance costs. And no road tax. You'll spot them by the green flash on the number plate. It's noticeable how many there are in Benenden now.

I dropped the hybrid options because full EVs are much simpler and because of good experiences renting EVs last summer which included trips to Scotland and Ireland.

The next choice is design age and price bracket and the choice of range and power



which strongly affects price. Range depends on the size of the battery. Power is the output and number of electric motors. The EV ranges are proliferating fast. There's a difference in space and design between cars with electric versions and those purpose designed to be EVs. There are lots of reviews and comparisons online.

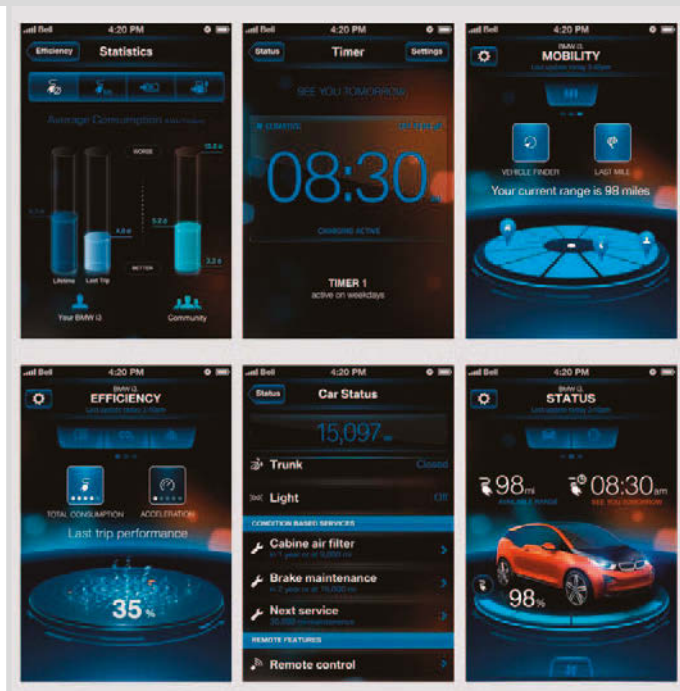
It's fair to say that Tesla got there first with reliable software, range and battery performance. Their focus has been on simplification and usability, in the engineering and the use of the car. There are minimal numbers of controls and just the central touch screen.

Tesla has its own network of superchargers programmed into your journeys. Each site has many chargers but even they must be getting busy by now! The parked-up experience is very different, with Netflix and the wonderful 'dog mode': press one button and the interior car alarm is silenced, the aircon is left on and the big screen shows a message to passersby that the dog is very happy.

We rented a KIA EV6, What Car magazine's

Car of the Year. Better to drive and quieter than the Tesla with many more elements controllable from the steering wheel. And intelligent lights which would move main beam light around the cars in front of you. Yet the company is not geared up to support its staff or its customers on how to configure and use the car optimally. Its battery technology and therefore its





range and charging speed is considerably below what the adverts claim. The phone app doesn't work. We decided it isn't worth the price tag yet.

We borrowed a KIA eNiro whilst the EV6 heating was being fixed. It has been around longer and was perfectly fine to drive, to use, a little bit better on battery miles per kilowatt. The phone app didn't work. It's a good all-rounder, just not as exciting as some.

VW group cars (VW, Audi, Seat, Skoda, Porsche) all use the same underpinnings and software, but with various clothing to suit. Anecdotal friends' experiences have been

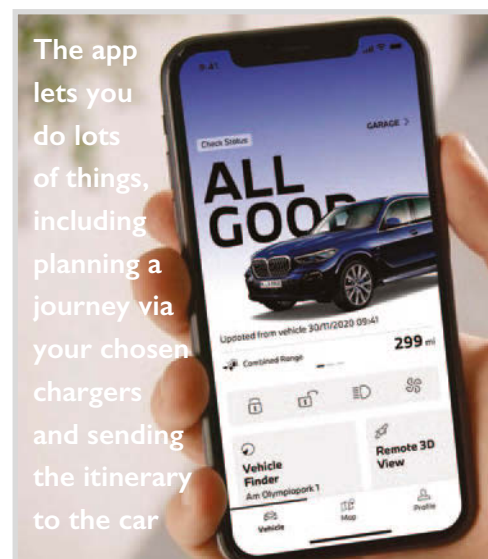
mixed e.g. dead 12v batteries locking you out, slow software, inability to get near the advertised range.

I tried the VW ID3 out and it was very nice to drive, nippy, minimalist, neither outstanding nor annoying - probably suits Golf converts. We also had the larger ID4 for a day and test drove the Skoda equivalent, the Enyaq. The first is minimalist, competent with an options list so complicated I never got to understand it. The Enyaq was more traditional and much roomier with a big boot. It's blander to drive than some sportier EVs, but still great compared to traditional cars.

The other obvious contender to try would have been Volvo's EV brand the Polestar. I didn't try it but friends say it's a really good car.

In the end we bought a BMW i3s after having rented it last year. Why?

It's Tardis like: a small car on the outside yet you feel you're in a big car. It's light: the chassis



The app lets you do lots of things, including planning a journey via your chosen chargers and sending the itinerary to the car



is carbon fibre which means the battery can be smaller and the range (mpg equivalent) and charging time better. It's enough: the range is 175 miles and, finally, it's great to drive: it feels very nimble and rapid.



BENENDEN PRE-SCHOOL

www.benendenpreschool.co.uk

Every Weekday in St George's Hall, by Benenden Cross-roads

Small and friendly pre-school - Awarded 'Outstanding' by Ofsted
Large secure gardens with slide, sandpit, playhouse and more!
All weather suits provided, for daily outdoor play in all seasons
Experienced, qualified staff including Graduate Leader
Weekly 'Sporty Tots' session with qualified instructor
Regular trips throughout the year - Close parental partnership
Children may start from age 2 - Childcare vouchers accepted
Full/half days/lunch clubs to suit your child's needs

Tel: 01580 241137 email: supervisor@benendenpreschool.co.uk

A non-profit making pre-school run by a committee of parents

Established 1967 a Registered Charity No: 1027577

Hemsted cars

professional private hire

Providing private hire and taxi service from Benenden.

We offer a reliable, professional service including airport and station transfers, courier service and informative tours for visitors to the area across Kent and Sussex.

Fully insured, licensed and DBS checked.

Contact us to discuss availability and tariffs on:

01580 242898 or 07707 242898

or visit our website for further information

www.hemstedcars.co.uk



SUTTON VALENCE PREPARATORY SCHOOL

The heart of Kent education, where each cares for all and individuality is cherished



Quality Mark awarded for English and Mathematics provision across the whole School

Little Lambs Nursery - available all year round

Set in acres of glorious Kent countryside

Pupils aged 2 - 11

Visit our website for more information – www.svs.org.uk

Call us on 01622 845800

Email our Admissions department at admissions@svs.org.uk



little lambs
NURSERY



Walking in a loop

WALK 3: STRAWBERRY WOOD LOOP

(1.25hrs)

A nice circular route.

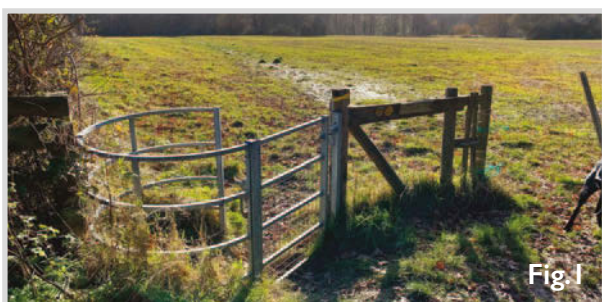


LET'S GO WALKING

(1.25 hrs)

From The Bull you have two choices. Walk up The Green, turn left through the churchyard into the Glebe Field and then across the back of the primary school. Or, from the village hall car park, enter the Glebe Field at the top of the playground, then go up the right side of the school before turning left to go behind it, appreciating the planted roof as you pass.

Walking past the beacon, you'll come to a gate in the corner of the field then cross diagonally right through a short field, dropping down to a gate to enter a ploughed field. Keep on the trodden path that takes you onto a track, where you turn right for about 20 metres. You then turn left through a metal gate (Fig.1) into a ploughed field and head in



a straight line (left diagonal) to its furthest corner. You will see the metal gate in the distance into Strawberry Wood as you crest the brow.

The path through the wood goes over the old 'Roman/Mediaeval' bridge, where there is an explanatory board. Then through a gate, skirting the field, another gate with a left turn skirting a wood, then another with a right turn skirting another field, which brings you down to Woodcock Lane. It's very simple to follow.

Turn right on Woodcock Lane for about 30 metres then take the wooden stile on the right

(Fig.2) to get back onto the footpath. This one skirts a field (which sometimes contains shire horses) bringing you to a stile into Iden



Green Wood. Follow the path up the gully in a straight line with woods on both sides.

You'll then come to a choice of short paths. Here cut right, past Bluebell Cottage in the woods, and go through the gate on the left (Fig.3) to cross the sheep field and come out onto Pullington Path. Turn right and continue up the path



until you arrive at the point where you first joined Pullington Path. From here retrace your steps back to where you started.

Peter Massey

In Your Garden



Strong summer colours give your garden a lift

I have been getting slightly obsessed with colour this year. It all started with a tulip that turned out to be the wrong variety - a not unusual occurrence when we order online. I had ordered T. Merlot, which is a lily-flowering deep violet burgundy, to go in a scheme with a peach and an orangey red. It came up as a lipstick red and was very tall and bold!

Luckily the client was away, so I had at least some adjustment time on my hands to get used to what can only be the perfect red - very similar, in fact, to a poppy but in a statuesque and very eye-catching tulip. It was the first in the display to flower and as the others joined the party I became perfectly happy with this new fiery combination, which sat very neighbourly with the white blossom nearby, from the amelanchiers and choisyas ('White Dazzler' to be precise).

So that was my happy accident. The client, by the way, loved it, which gave me the confidence to plug on with this new way of planting. I must add here that this is a garden I have maintained for almost 10 years, on the outskirts of Sevenoaks. I am completely left to my own devices, which is heaven, as only then can you, as a working gardener and creator, develop a garden successfully, not to mention learn so much through trial and error.

As you can imagine, I did not stop with lipstick red. In went some blue anemones, which are now flowering, and some candy floss pink ranunculas. The roses nearby are a sumptuous 'William Shakespeare', a 'Darcey Bussell' and for contrast a very delicate soft apricot pink 'Emily Bronte', a saliva 'Clotted Cream', an achillea 'Moonshine', and a knautia. I have just added in some Tithonia 'Torch' (grown from seed), some Tagetes 'Cinnabar'

grown from Dixter seed, Zinnia 'Orange King' and Dahlia 'Bishops Children' (also grown from seed last year, stored as tubers over winter, grown on and re-planted out).

I have a wonderful reed grass currently sitting in the greenhouse - *Arundo donax* 'Variegata' which I might plant out next week, plus two cannas went in recently - unidentified as they were divisions handed over from the next-door neighbour, but I think one is C. 'Wyoming' and the other C. 'Pretoria' or similar. The display pots have purple heliotropes, the brightest sherbert pink pelargoniums, vast coral pink begonias, and trailing pink verbenas and blue lobelias.

I must add that interspersed around the same garden I do have some restful planting to counterbalance the colour overload. A huge terracotta pot on the terrace is packed full of only white pelargoniums. A swathe of erigeron runs along the driveway wall. There is an awful lot of green, too. Yards of neatly clipped box hedging (maintained by an excellent and very talented contractor), blocks high and low of yew, many trees (multi-stemmed amelanchiers, a very old catalpa, hawthorn, crab apples, hazels and a towering sycamore). Blocks of tall grasses (*Miscanthus* 'Kleine Fontane') and ripples of *Hakonechloa macra* also do a great job of toning down the colour.

And herein lies the trick. Whilst I adore whites, silvers, catmint blues and soft geranium pinks, strong colours really do lift a garden up to another level. It is bold but it is great fun and as gardeners we should never shy away from trying out new plants and schemes. It keeps the garden alive and kicking and moving forward - surely one of the most valid reasons why we do 'garden'.

Annabel Lear GARDENS

Planting . Design . Consultancy

07759 440922 annabellelear@btinternet.com



TIM'S TOOLS
MACHINERY REPAIR

Service and repair of all types of
garden machinery.

- Lawn mower servicing and repairs
- Lawn mower blade sharpening
- Chainsaw blade sharpening
- Carburetor cleaning and adjustment
- Hedge trimmer, Strimmer, Leaf blower repairs

Tel: 07977 562329

Email: timtoolrepair@gmail.com

Whatever you want to store...

...house sale & purchase not coinciding, travelling, house building work, paperwork overload or just "de-cluttering" to sell your house more quickly – we offer a friendly and flexible service in Cranbrook. With secure storage, competitive rates, all on one level and hassle free 24/7 access, contact us now!



01580 713231
www.barn-store.co.uk

CHEESEMANS GARAGE

B. J. NASH



BENENDEN, KENT

TELEPHONE
CRANBROOK 240583

TOMPSETT LANDSCAPING

GARDEN LANDSCAPE AND MAINTENANCE CONTRACTORS

Tompsett Landscaping is a family run business which takes pride in offering a quality, professional, friendly and reliable service at competitive rates for all aspects of garden maintenance and landscaping.



Nick Tompsett
07746 672946

Rob Tompsett
07961 637275

E: info@tompsettlandscaping.co.uk
W: www.tompsettlandscaping.co.uk

PLEASE CONTACT US TODAY FOR YOUR FREE NO OBLIGATIONS QUOTATION

www.lambertandfoster.co.uk



Lambert & Foster

PROPERTY PROFESSIONALS FOR OVER 100 YEARS

RESIDENTIAL SALES & LETTINGS | REGISTERED VALUERS AUCTIONS | PLANNING
RURAL PROFESSIONALS | SITE PROMOTION & DEVELOPMENT | BUILDING SURVEYING

CRANBROOK OFFICE 01580 712 234

Email: cranbrook@lambertandfoster.co.uk

OFFICES ALSO AT PADDOCK WOOD & MAYFIELD



arla | propertymark

**BOOK YOUR
MARKET
APPRAISAL**

IN ASSOCIATION WITH

bloomfields
CHARTERED TOWN PLANNERS

9 OUT OF 10 CUSTOMERS RENEW WITH US EACH YEAR

To find out why, talk to us today about your home and car insurance needs.

Speak to your local NFU Mutual Ashford, Tenterden & Whitfield agent on **01580 766 174** or email Tenterden_Agency@nfumutual.co.uk



NFU Mutual
INSURANCE | PENSIONS | INVESTMENTS

D P Jackson, G R Ashby & D M Smith is an appointed representative of The National Farmers Union Mutual Insurance Society Limited (No. 111982). Registered in England. Registered Office: Tiddington Road, Stratford-upon-Avon, Warwickshire CV37 7BJ. Authorised by the Prudential Regulation Authority and regulated by the Financial Conduct Authority and the Prudential Regulation Authority. A member of the Association of British Insurers.



Above: A village in celebration: for the Queen's Platinum Jubilee in the village hall, at the primary school, in the belfry; on a pre-school t-towel and in our community; cricketers marking fine form; bowlers' triumph in the Pop Horton Cup.
Front cover: The crowning glory at the Benenden Fete. Photograph: Beth Ansell