

# Hoo St Werburgh and Chattenden Parish Council

November/December 2025  
Volume 2, Issue 3

## Community Connections



Welcome to the Hoo and Chattenden Parish Council Newsletter

### Spotlight on Your Parish Council Vice-Chairman – Mike Williams



Cllr Mike Williams has been an active and committed member of Hoo & Chattenden Parish Council for nearly a decade. First co-opted in 2015, he was elected Vice Chairman the following year, initially serving alongside then Chairman John Tildesley. Since 2019, he has continued in the role, supporting Chairman Cllr Ron Sands in leading the Council.

Mike plays a vital role across the Council's work. He chairs the Finance Committee, oversees budgets and financial planning, and is the lead councillor and Chairman of the New Community Centre Project Committee. He also serves on the Personnel Committee and is jointly leading the Memorial Garden Project with the Chairman.

As a long-standing resident, Mike brings local knowledge, steady leadership, and a practical, community-first approach to everything he does.

Contact the Vice Chairman: [mike.williams@hoopc.org](mailto:mike.williams@hoopc.org)

## Christmas Community Events

### Christmas on the Green

Saturday 29 November, 5.00–7.00pm

Join us on the Green for an evening of festive fun as we welcome back Santa, who will be handing out gifts for the children. The wonderful Two Nightingales, who delighted us at the VE Day Fete, will be performing again, with the Salvation Army Band joining us for traditional carols.

Children can also look forward to a visit from Stitch, The Grinch, and an Elf – guaranteed to bring plenty of festive cheer! Free tea, coffee, and squash will be available to keep everyone warm.



### Inside this issue

Spot Light on.....	1
New Community Centre .....	2
New Community Centre .....	3
Updates .....	4

### Special points of interest

- Community Events ... Page 1
- Memorial Garden ... Page 4

### Village Pantomime – Dick Whittington

Saturday 3 January, 2.30pm

Pottery Road Village Hall

Kick off the New Year with our traditional pantomime! This year's production is Dick Whittington, a fun-filled show for all ages.

Tickets: Adults £10 | Children (ages 3–11) £5  
This event is sponsored by Ward Councillor Sands.

More community events are planned for 2026 – keep an eye on the Parish Council website and Facebook page for updates!

# NEW COMMUNITY CENTRE

The Parish Council continues to make steady progress with the long-awaited New Community Centre, which will replace the ageing Village Hall on Pottery Road. This project remains one of the most important and ambitious undertakings for Hoo & Chattenden, and we are pleased to share the latest news.

## Progress so far

Architects have been formally appointed, and the pre-application stage reports are now complete. Following careful preparation, the planning application is ready to be submitted to Medway Council.

In October, the Parish Council held a well-attended Open Day at the Village Hall, where residents were invited to view the draft plans and ask questions. The feedback received was overwhelmingly positive. All comments and suggestions have been carefully reviewed and, where appropriate, incorporated into the final design and planning application.

## What happens next

If the planning application is approved, we anticipate that construction will begin in mid-2026.



## As part of this process:

The tarmac play area, caged games area, teen shelter, and skate ramps will need to be removed to allow space for the new building.

All play equipment will be re-provided in a new location on the Recreation Ground once the build is complete.

The existing Village Hall will remain fully open during construction, ensuring continuity for community groups and bookings.

Once the new Centre is complete, a smooth transfer of services will take place, after which the old hall will be demolished and the area landscaped to provide car parking and green space.

## Funding the project

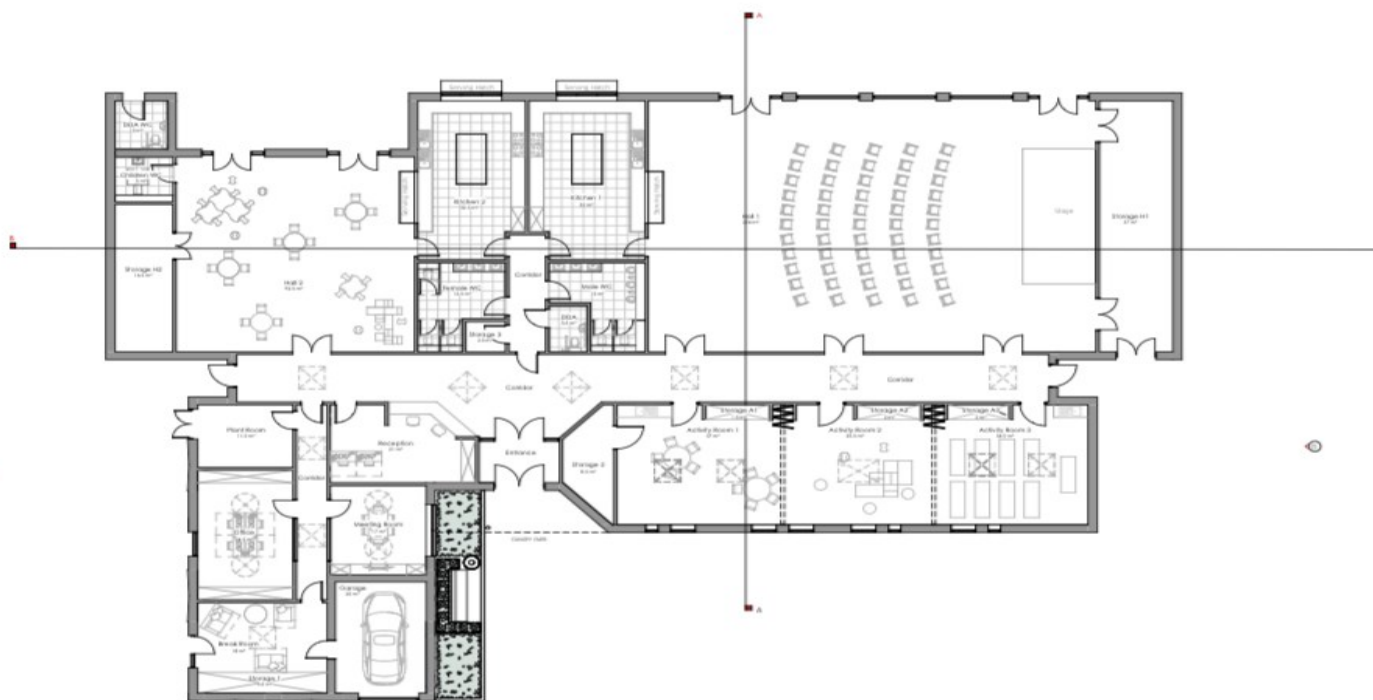
This is a major capital project supported by Section 106 funding secured through Medway Council.

However, the cost of delivering the new Community Centre is higher than the funds available, and the Parish Council faces a significant funding shortfall.

Work is already underway to explore additional sources of funding, including grants, community fundraising, and sponsorship opportunities.



# NEW COMMUNITY CENTRE



## Why this project matters

The new Community Centre will be a modern, flexible hub at the heart of the parish. Designed with the needs of a growing community in mind, it will provide:

- Larger, more adaptable rooms for community groups and events.
- Improved facilities for youth, sport, and cultural activities.
- Space for health, wellbeing, and education programmes.
- A welcoming environment that is accessible to all.

We believe this facility will be a lasting investment in the future of Hoo & Chattenden, providing a shared space that strengthens community life for decades to come.

## Find out more

Projected plans and images of the proposed new Centre can be seen below. Updates on progress will continue to be shared in future newsletters, on the **Parish Council website**, and via the **Council's Facebook page**.

## MEMORIAL GARDEN – UPDATE

As reported in previous newsletters, the **Memorial Garden on Vicarage Lane** is now open for residents to enjoy as a quiet, tranquil, and peaceful space.

Over the coming months, residents will notice further **major improvements** as the final phase of landscaping is completed. This will include:

- Installation of **fencing** to define designated areas.
- Creation of **footpaths** to allow easier access throughout the garden.
- Addition of **memorial benches, landscaping, and signage**.

In late September, the **Memorial Stone** was installed (pictured opposite). This stone stands in memory of those lost and fallen on the Peninsula.

The Parish Council is now inviting applications for:

- Memorial plaques, which may be placed on the fencing.
- Memorial benches, which will be considered upon application.

We hope this space, overlooking the River Medway and surrounding countryside, will offer a fitting and beautiful place for remembrance and reflection.

To submit an application for a memorial plaque or bench, please contact the Parish Clerk .

## COMMUNITY AWARD

The Parish Council is proud to acknowledge the incredible dedication and commitment of individuals and organisations within our community. To celebrate these efforts, we are excited to announce the establishment of the Annual Community Award.

We invite residents to submit nominations for individuals or groups who deserve this recognition. The chosen recipients will be celebrated at our Annual Parish Meeting of the Parish in May 2026.

### How to Nominate

Nominations are open until 31st March 2026. To nominate someone, visit our website or contact the Parish Clerk for further details.



## TREE MAINTENANCE

Residents may have noticed recent tree works at **Pottery Road Recreation Ground and Kingshill Recreation Ground**. The Parish Council has a duty of care to ensure trees on its land are kept in a safe condition. A recent professional inspection at Pottery Road identified several trees requiring attention; as a result, some have been cut back and a small number removed on health and safety grounds only.

Our policy is clear: **we do not fell healthy trees**. Where removal has been unavoidable for safety, **replacement planting will take place**.

### What's planned next

#### Pottery Road Recreation Ground:

Extensive landscaping will follow completion of the New Community Centre. Any trees removed during the build will be replaced as part of the final scheme.

#### Kingshill Recreation Ground & Hoo Common:

The Parish Council operates tree management plans for both sites. In early 2026, works to vegetation and trees at Hoo Common will be carried out in line with this plan.

### Report a dangerous tree

If you spot a tree on Parish Council land that appears damaged, unstable, or dangerous, please let us know straight away. This includes trees at:

- **Hoo Common**
- **Kingshill Recreation Ground**
- **Vicarage Lane Memorial Garden**
- **Pottery Road Recreation Ground**

Contact: Parish Clerk – [clerk@hoopc.org](mailto:clerk@hoopc.org)

