

# MICKLEHAM PARISH Magazine

A community magazine for Mickleham and Westhumble



February 2018



  
**P.F. WINDIBANK**  
 FINE ART AUCTIONEERS & VALUERS  
 Buying and Selling Jewellery Silver Antiques and Collectables



*We offer comprehensive Probate and Insurance Valuations*  
 P F Windibank Auctioneers  
 The Dorking Halls Reigate Road Dorking Surrey RH4 1SG  
 01306 884556 sjw@windibank.co.uk www.windibank.co.uk

  
**Bullimores**  
 Chartered Accountants  
**The Safe Pair of hands**  
 Tax • Accounts • Probate  
 Inheritance Tax & Executorship  
 For advice, please call us on: **01306 880880**  
 or email: [partners@bullimores.co.uk](mailto:partners@bullimores.co.uk)  
[www.bullimores.co.uk](http://www.bullimores.co.uk)  
Bullimores LLP licenced to carry out the reserved legal activity of non-contentious probate in England and Wales by the ICAEW



**Stepping Stones**  
*Country Pub and Dining*

**STEAK NIGHT  
EVERY TUESDAY  
TWO COURSE MEAL  
GLASS OF WINE  
£19**

**Food Served All Day – Free Wi-Fi**  
**Walkers – Muddy Boots – Cyclists – Families and dogs**  
 All welcome  
*Lovely function room available for meetings family and business events*  
 Near Box Hill and Westhumble Station  
 01306 889932 [www.steppingstonesdorking.com](http://www.steppingstonesdorking.com)  
[steppingstonespub@gmail.com](mailto:steppingstonespub@gmail.com)

**Please see  
website  
for  
special  
events**



***Sherlock Funeral Service***  
*Sherlock Funeral Service is an Independent family owned business, established over 100 years*

- Private Service Chapel & Rest Rooms
- Home visits arranged if required
- Pre-Paid Funeral Plans available
- Free Parking

**Telephone: 01306 882266**  
 Trellis House, 190 South Street, Dorking RH4 2ES.  
 Email: [office@sherlockandsons.co.uk](mailto:office@sherlockandsons.co.uk)





**Funeral Directors & Monumental Masons**

# Mickleham Parish Magazine

February  
2018

## Mickleham Parish Magazine

A community magazine for Mickleham and Westhumble published under the auspices of Mickleham PCC with an independent editorial panel. The magazine is published at the beginning of each month except January and August.

COPY DEADLINE  
 FOR THE  
 MARCH 2018  
 MAGAZINE  
 Sunday  
 4<sup>th</sup> February

send to:  
 Sue Tatham  
 St Anthony Pilgrim's Way  
 Westhumble  
 Dorking RH5 6AW  
 01306 882547  
[sue@thetathamss.co.uk](mailto:sue@thetathamss.co.uk)

Contributions in any form are welcome as are good quality photographs. There is no charge for advertising local charity and community events. However the editors reserve the right to shorten omit or reformat articles submitted for publication depending on space.



Printed by Bishops Printers  
Portsmouth

Garden Cottage  
Mickleham

Dear friends

The gap between one parish priest leaving and a new one arriving was at one time described as an interregnum. It now goes under the rather more mundane title of a vacancy. I am not sure why the change. Either way it can be a period of some confusion and also a time when one begins to realise quite how much effort was put in by Malcolm Raby and his predecessors in support of the parish.

One of the more obvious signs of a vacancy is different priests appearing each Sunday to lead church services. If nothing else this introduces variety and for those who were in church over Christmas or on Epiphany some interesting and different ways of conducting worship. We are enormously grateful to these priests including those from Leatherhead who are leading services twice a month.

As you may already know we have now announced a new priest for Mickleham. Following is the text of the announcement made on Sunday 7th January in Mickleham. A similar statement was made on the same day in both Leatherhead and Andover.

*Reverend Canon John Harkin will be returning to Mickleham where he served as Priest in Charge and Chaplain to Box Hill School from 1993 to 1998. He will be Associate Minister within the United Benefice of Leatherhead and Mickleham on a House for Duty basis that is Sunday plus two days a week and living in Mickleham Rectory.*

*When John left Mickleham he moved to the Diocese of Winchester first on the island of Jersey and ten years later to St. Mary's Church in Andover where he is currently Vicar. John will move to Mickleham sometime after Easter and will be licenced here in church at a date to be agreed probably not until late April or early May.*

*As an aside John and his wife Sue will be visiting Mickleham in February when their daughter Katie will be getting married here at St. Michael's.*

*Please hold John and Sue in your prayers as they and we begin a new chapter.*

We all look forward to that new chapter.

  
 John Banfield  
 Churchwarden



Photograph: Ben Tatham

*It will soon be spring! Hellebores at Polesden Lacey*



## Our lovely churchyard

Each year St Michael's many visitors remark on the pervading feeling of peace within the building. Likewise, many people wish to have a moment of reflection and rest while they visit the war memorial and the churchyard, but until recently there was nowhere to sit. Now we have a lovely new bench, a thoughtful and generous gift from Gill and Jason Wilson.



### JOIN US FOR BREAKFAST

THE RUNNING HORSES  
9–10 A.M.

Please book by the Tuesday before

### MEN'S BREAKFASTS

THIRD SATURDAYS

17<sup>TH</sup> FEBRUARY

Book with: Andy Diamond  
diamo1@hotmail.co.uk

### WOMEN'S BREAKFASTS

FOURTH SATURDAYS

24<sup>TH</sup> FEBRUARY

Book with: Stephanie Randall  
0773 6933 482  
srandall55@gmail.com

## Tea @ 3

FOURTH MONDAYS

Monday

26<sup>th</sup> February

Host: Penny Butcher

Cleveland Barn  
Westhumble Street  
Westhumble RH5 6BT  
07818 404 695

ALL WELCOME  
TRANSPORT AVAILABLE

## Malcolm and Sue's Farewell

When Malcolm and Sue Raby joined our community in 2013, we always knew it would only be for a few years. Malcolm had come from a full time post in Over, Cambridge, and the House for Duty role that brought him to Mickleham would serve as a mid way between full-time ministry and eventual retirement.

The last Sunday in November was to be Malcolm's very last service. In true *Bake-Off* fashion, a 'select' team of culinary experts from the parish set about making and tasting a variety of sweet and savoury canapés. These tasting sessions played a crucial role in what would finally be plated up on

26<sup>th</sup> November. Quality control was the key word, if it was more than a mouthful, it was too big!

On a grey November lunch time Malcolm and Sue were joined by members of the congregation to a canapés and drinks farewell. They were presented with a cheque which (as they were downsizing to a flat in Epsom) we hoped would go some way towards buying items for their new home.

We wish them all our love, and hope they take with them some happy memories of St Michael's as they embark on the next adventure in their lives.  
Jenny Hudlass

## Our Christmas Trees

Again this year St Michael's was abedecated with illuminated Christmas trees on each side of its entrance, supplied by The Running Horses. Many thanks to the 'Runners' and to David Mann and Jason Wilson who installed and decorated them. Jason, assisted by his nine-year-old

daughter, Katie, also installed the tree inside the church. This was beautifully decorated by members of the church congregation after the 10 o'clock service early in mid-December.



## A Thank you from the Nursery

On behalf of St Michael's Community Nursery I would like to express our thanks for the donation from the Parish Magazine 'Christmas Card'. As with many educational establishments, Early Years are suffering with increasing costs and reduced funding, donations really do make a difference, enabling us to update tired equipment and make the odd 'luxury' purchase!

This year we have spent the donation on purchasing new painting and mud kitchen tabards. Our old tabards did us proud, lasting over ten years, but the plastic around the collar had deteriorated and was a bit 'scratchy'. We now have some lovely new 'Forest Friends' tabards on order. Rather than using toilet rolls... your donation also went towards the purchase of some



papier-mâché angel blanks. We now have a host of angels currently flying in the nursery and hope that they will be gracing their makers Christmas Trees for at least the next 20 years! Thank-you once again.

Hilary Budd

## The Christmas Eve Crib Service Larry finds a home

The pop up pub was in full swing and I was on washing-up duty as usual. Coming over to the house with yet another trug full of glasses I noticed something on our doorstep. A 'lamb' was standing on the step with a label around its neck, not unlike Paddington Bear. However, rather than 'Please look after this bear' the label read thus:

*My name is Larry. I am now an orphan. The family I grew up with have all left home now so I am – unwanted. I have always dreamed of becoming part of the Nativity scene – perhaps sharing a warm stable with other animals but most of all with the Baby Jesus. Please could you arrange this for me? Baa. Thank you.*

How could we refuse? On Christmas Eve the procession followed the star along the lane to the field and by the time we arrived about 100 people had gathered to watch the story of Jesus' birth unfold. The service was led by a very competent team of young readers and other children (plus a few adults, more of which later) formed a tableau as the story was told. Larry was at the forefront of the stable.

It is always a bit of a surprise to see how many angels, shepherds and wise men are in attendance. This year the wise men did not appear, they were obviously waiting for Epiphany, so some adults from the crowd, who had been passed over for the role when they were



at school volunteered. The tableau was complete.

Thank you for supporting this annual event, which is for everyone, not just children. Special thanks to Jonathan, Gerry, Vicki and the Adshead family for their hard work and a special mention to Sophie who played the keyboard so well.

We look forward to seeing you all again next year, when Larry will make another appearance in the stable.

Anne Weaver

## Service of Nine Lessons and Carols

Magically lit church, lovely singing, tub-thumping lesson readers and a beautiful organ, what more can we want on a cold and frosty evening just before Christmas?

Not much in fact. We missed the Rabys – to whom all the best for their new life in Epsom – and Christopher Connett who is, sadly, not well and to whom we wish a full and speedy recovery.

But the subs done good. Conductor Juliet Hornby masterminded a choir augmented by several Mickleham Choral Society members, and Jan Assersohn's organ playing was serene. Curate Ian Stonehouse kindly came from Leatherhead to lead the service, beautifully. We are very grateful to all

of them. I was even able to use my old joke that I am married to one of the tenors, which still gets me a sidelong glance even in this PC age.

There were several old favourites – eg John Rutter's *Nativity Carol* – and also some lesser-known pieces. I had had the pleasure of hearing Rutter's Christmas concert at the Albert Hall earlier in the week, and I can honestly say that Mickleham does Rutter at least as well as Rutter does Rutter. *My Lord has come* by Will Todd was modern but melodic, and contrasted nicely with the 14<sup>th</sup> century German carol *Lo how a Rose e'er Blooming*. There were a couple of nice solos from soprano Poppy Parfitt and from tenor Richard Siberry,

but mostly it was a team effort, and a fine one.

I suppose one reason why I enjoy this service so much is that it is very musical, and (if I'm honest) not heavy on the religion. You don't get what Clement Attlee used to call the mumbo-jumbo bit, but you do get a great story, simply told, and great music. Many thanks to Juliet and everyone else who contributed. And one final plea – next year, could we have back *Hark the Herald Angels Sing*, and make it six carols each congregation and choir, not 5:7?

Will Dennis



## St Michael's Youth Group

It is with much sadness that we have decided that at the moment we do not have sufficient young people attending to justify running on a regular two-weekly basis. Therefore we will not be running this term.

This said we can restart if we have sufficient interest. What we do intend to do is keep in touch via special one-off events. With this in mind the first will be bowling at Guildford Spectrum on Friday 23<sup>rd</sup> February, parents are also welcome. Anyone interested should contact Jonathan Blake on 07787 126 966.

## Church Flowers

Many thanks to our flower arrangers who decorated the church so beautifully for Christmas and throughout the past year. Special thanks to Jan Richards who organises the rota and ensures that St Michael's is always looking its best. She and all her helpers are volunteers, although there is a small fund for buying the flowers. If you enjoy arranging flowers or would like to learn more about this craft please contact Jan at richardsjan@btinternet.com



Superb professional  
cleaning of carpets  
oriental rugs  
upholstery curtains  
and leather  
Guardsman  
anti-stain protection

- spot stain and odour removal
- leather cleaning specialists
- flame retarding
- dust mite reduction service
- all work fully insured & guaranteed

For a free no obligation quotation call today  
Freephone 0808 144 9071  
John Joannides 28 Bracken Close Bookham

**Safeclean**  
*The furnishing care specialists from GUARDSMAN*



*Pinehurst  
Rest Home*

*We aim to provide an excellent service at competitive rates supporting emotional physical and social needs of our clients always respecting and protecting their status as adults.*

- Residential and 24-hour daycare
- Excellent cuisine
- Facilities for disabled: medic bath / lift
- Home doctor in attendance
- Single & sharing rooms
- Convalescent & short stays
- Lounge with TV & piano
- Separate dining room
- Physiotherapist chiropodist & hairdresser
- Entertainment: theatre visits / parties & cabarets held on premises

**National Trust Road Box Hill  
Mickleham Dorking Surrey RH5 6BY**  
Telephone: 01306 889942 / 888253

*Dorking Decorators*  
PROFESSIONAL PAINTERS & DECORATORS

**40 Years Experience**  
All aspects of painting and decorating

**01306 640418**

[www.dorkingdecorators.co.uk](http://www.dorkingdecorators.co.uk)

Approved by Trading Standards & Checktrade



**CHRIS HULME**

*Garden Machinery*

Service and repair of all makes and models of:

- Ride-on mowers • Rotary mowers • Cylinder mowers
- Chainsaws • Strimmers • Hedge cutters
- Rotavators • Blower vacs

Quality secondhand machinery  
Collection and delivery service

The Barn Cowslip Lane Mickleham 01372 377757 / 07950 961606

• Quality Flowers • Personal Service • Customer Satisfaction •

**FLOWERS by ELAINE**

- Wedding Specialists •
- Qualified Florists • Fresh Flowers & Plants • Local Delivery •
- Varied Gift Selection • Corporate Functions • Special Occasions •
- Funeral Tribute Specialists • Interflora Worldwide •

66 High Street, Dorking, Surrey RH4 1AY  
T: 01306 883511 • E: fbe@btconnect.com  
[www.flowersbyelaine.co.uk](http://www.flowersbyelaine.co.uk)



**SIMON HOOPER**  
For all your decorating needs...

Professional friendly and speedy service at all times

- |                          |                             |
|--------------------------|-----------------------------|
| Fully insured            | Insurance work              |
| Exterior painting        | Interior decorating         |
| Free quotes & advice     | Oil & Water-based products  |
| Commercial/Domestic work | Wallpaper hanging & removal |

07947 135 376 0208 3978 962  
[www.slhdecoratingservices.com](http://www.slhdecoratingservices.com)

## Christingle Workshop & Service

Photographs: Kirsten Pitman



## Christmas carolling in our local pubs

Photograph: Amy Ward



On 23<sup>rd</sup> December a motley band of singers from the Mickleham and Westhumble community and

Mickleham Choral Society met in the Stepping Stones to sing carols. We were received with a warm welcome

and were certainly in the festive spirit, breaking heartily into song with some impressive impromptu harmony taking place!

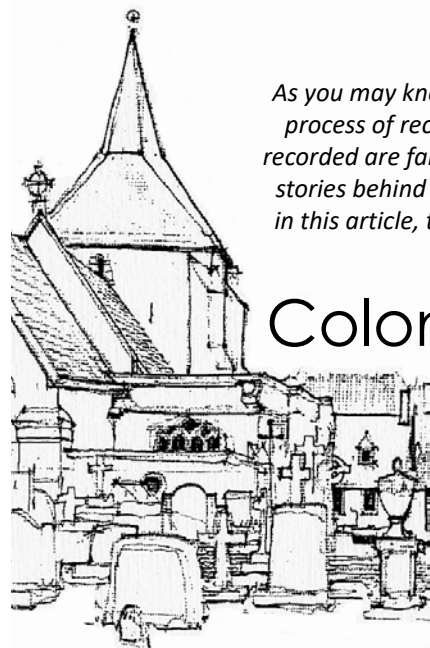
Moving onto *The Running Horses*, we were joined by more singers, and under the expert leadership of Richard Siberry, delivered a hearty rendition of the nation's favourites. Many customers joined in, too. A brisk walk later and our final stop, the King Willie, greeted us with a splendid platter of welcoming food and drinks. We finished the night in fine spirits!

We raised an impressive £357.47 for SANDS, the stillbirth and neonatal death charity. I truly cannot think of a better way to spend the final Saturday before Christmas. Amy Ward



# Mickleham & Westhumble Local History Group

## Hidden Histories



*As you may know, members of the Mickleham & Westhumble Local History Group are in the process of recording the grave inscriptions in St Michael's churchyard. Some of the names recorded are familiar, others new to us and it is impossible not to be intrigued by the personal stories behind these gravestones. We have researched some of these 'hidden histories' and in this article, the first of an occasional series, introduce Colonel Nangle who had some very unexpected family connections.*

## Colonel Walter Chidiok Nangle

We found Colonel Nangle's headstone by chance. It lay under a tree, covered by dead leaves, and some distance from the actual grave. According to the inscription, Walter Chidiok Nangle, late Royal Artillery, died aged 70 in 1900. His father came from Ireland and his mother was the daughter of Sir Henry Tichborne, Bart. The Mickleham burial register confirmed that he was buried in 1900, on 26<sup>th</sup> September, and gave his address as Cowslips, Mickleham (in Norbury Park) and his age as 69 (which was correct). Judy Kinloch pointed out that, given the unusual names, he might be related to Chidiok Tichborne, an Elizabethan poet remembered now for his Elegy which begins: 'My prime of youth is but a frost of cares'. These words are made more poignant on discovering they were written to his wife on the eve of his execution for treason in 1586. Tichborne, a staunch Catholic, had taken part in the failed Babington Plot to murder Elizabeth I and put the Catholic Mary, Queen of Scots, on the throne. He was a second cousin of Sir Benjamin Tichborne from whom Colonel Nangle's mother was descended. The stain of treason on the family name did not however prevent Sir Benjamin being created a Baronet by James I.

Walter Chidiok Nangle was born in Lymington, Hampshire in 1831. In 1849, after two years as a Gentleman Cadet, he earned his commission as a

2nd Lieutenant in the Royal Artillery. He served in Canada, Jamaica and the Crimean War, where he witnessed the capture of Sebastopol. In February 1855 he married Mary Annesley, granddaughter of the 11th Viscount Valentia. For the next twenty years, like many others in the military, he moved repeatedly with his growing family in tow. A short stay at Sandhurst was followed by several years at Woolwich in the 1860s. By then a Captain, he was transferred to the Control Department and appointed Assistant Controller (equivalent to Lieutenant-Colonel) of the depot at Bull Point in Devon where 40,000 barrels of gunpowder were stored. During his time at Woolwich and Bull Point he had three patents granted provisionally, for inventions relating to armour plating and to improvements in paints for coating metals, although these later became void due to non-payment of the required stamp duty.

In 1874 Walter was posted to Gibraltar where five years later his wife died tragically after fracturing her skull in a fall. Between 1860 and 1875 Mary Nangle had given birth to ten children of whom two died in early childhood. Not only had Walter now to cope with the loss of his wife but he was also left with six children still under the age of sixteen. Perhaps due to this situation he left Gibraltar to become Chief of the Ordnance Department in Ireland, before transferring to Portsmouth and retiring as an honorary Colonel in 1885. In 1883 he married Alicia Almeida Mackenzie and, although his personal life presumably improved, his finances deteriorated until he was declared bankrupt in 1889. This did not prevent the Nangles from remaining in their house in Kensington, as Walter was still on the Kensington Electoral Register in 1896. Kelly's Directory for 1898 lists

them at a cottage in Hampshire so they could only have lived in Mickleham for a brief period before Walter's death.

Colonel Nangle's obituary appeared in newspapers throughout Britain (including the Shetland Times!) and almost all referred to him as a witness in the Tichborne trial. This now forgotten case, involving a claimant to the Tichborne baronetcy, fascinated Victorian society in the 1860s and 1870s. The case hinged on the disappearance of Roger Tichborne, heir to the baronetcy. Roger was Walter Nangle's cousin, Roger's father being the brother of Walter's mother. Roger's parents did not have a happy marriage and he was brought up in Paris by his French mother, speaking mostly French. In 1854, while sailing from South America to Jamaica, the ship sank and Roger was presumed drowned. Rumours suggested that survivors of the wreck had been taken to Australia and Roger's mother,

>>>>



Roger Tichborne

Photograph: State Library of NSW

>>>> Lady Tichborne, offered a reward for information about her son. In 1865, a poor Australian immigrant named Thomas Castro, thereafter known as 'The Claimant', declared himself to be the missing Roger, who by then would have become the 11th Baronet. Lady Tichborne was convinced by the Claimant, despite the fact he was significantly heavier than her son, of poor education and had little knowledge of French. Other family members believed him to be an impostor and their investigations led to the discovery that he was possibly Arthur Orton, born in Wapping, who had lived in South America before immigrating to Australia.

A civil case was brought in 1871, which the Claimant hoped would confirm his identity. However, the jury rejected his claims and he was arrested on charges of perjury. The criminal trial

that followed was then one of the longest in English legal history, lasting from 23 April 1873 to 28 February 1874. Public opinion was divided over the case, with many in the working classes believing it exemplified their difficulties in obtaining justice through the legal system. Walter Nangle testified that he was intimately acquainted with Roger Tichborne in Paris and was constantly in his company. He said the Claimant had failed to recognise him twice since returning to England and bore no resemblance to Roger. The Claimant was found guilty of perjury and sentenced to fourteen years in prison. He died in poverty in 1898 and was buried in Paddington cemetery. The Tichborne family allowed the name 'Sir Roger Charles Doughty Tichborne' to be placed on his coffin and the name Tichborne was entered in the burial records.

Judith Long



'The Claimant' c1880

Photograph: State Library of NSW

## Daniel in real trouble – but not in the Lion's den

I should warn you that this little piece is about the Old Testament – not very fashionable. But, after all, it is appearing in a parish magazine – so perhaps I can be forgiven.

When I was 18, on National Service, I was fortunate enough to visit St Catherine's monastery on Mount Sinai. I stood at the site of the burning bush, touching the leaves of its successor of many generations. More relevantly to today's piece, I visited the library in the monastery where the oldest known copies of the New Testament gospels were found. An old dusty place, with ancient books and manuscripts littered everywhere.

I often think of that visit and when Malcolm Raby talked about Chapter 2 of the Book of Daniel some time ago, I thought I remembered a story about an old MS which had been discovered some years ago – or did I just dream it? I am sure you remember the story from your childhood – it is called. This is how it goes. The King had a dream and was so worried about this dream that he called all his wise men together and asked them what it meant. They said, 'tell us the dream O King and we will tell you its meaning'. Now the King obviously thought to himself 'If the wise men are any good they will be able to

work out the dream.' So he refused to tell them. When they all looked nonplussed, he got in a rage and said to his guards: 'These so-called wise men are frauds – kill the lot of them'.

As you will imagine, this caused Daniel some little concern – because he was on the death list – so he obviously thought up a cunning wheeze. Chapter 2, v19 says *That same night the mystery was revealed to Daniel in a vision* and Daniel tells the King a splendid story and its meaning and gets all the wise men out of trouble.

This is where the old MS comes in. It includes three verses not in the historic Old Testament, they read as follows:

v19 *The same night the mystery was revealed to Daniel in a night vision. Behold he saw the King in his Chamber writhing in the discomfort of his undergarments that he had ordered so many of his good and trusty servants to be killed but he did not know how to avoid discomfort to his visage.*

v19A *God said to Daniel. 'Behold the King's distress. Go thou and describe to him his dream and its meaning.' But Daniel said 'Oh God of heaven, you know that I know not what was the dream'.*

v19B *And God said 'Daniel, have faith in the wisdom of your God. It matters*

*not what the dream was. The King seeks an excuse to reverse his decision to kill his wise men without further discomfort to his visage. Whatever story you tell him he will accept because nobody but the King knows whether or not it is correct and it will enable him to escape his discomforture.'*

v20 *Daniel praised the God of Heaven ....* [continue in the traditional version.]

I have used an ancient translation of the Hebrew text. For the benefit of those of you who are not familiar with 17<sup>th</sup> Century English, *discomfort of his undergarments* means in modern English 'his knickers were in a twist' and *discomfort to his visage* means 'losing face'.

I seemed to remember that the MS had a note by the scribe who copied it suggesting that this might be a modern invention. Oh well, perhaps I dreamt it after all.

Barry Moughton







- Bespoke dress making
- Soft furnishings
- Clothing alterations
- Curtains
- Sewing lessons
- Roman Blinds

Contact Tracey: 07511 079441  
traceyssewingroom@gmail.com

**Treeline** Services Ltd.  
**YOUR LOCAL PROFESSIONAL  
TREE HEALTH CARE SPECIALISTS**

Felling, Pruning, Stump Removal, Planting, Logs,  
Woodchip, Air Spade Services, Consultancy

Call us on **01306 741800**  
office@treeline.co.uk • www.treeline.co.uk

**We provide the best  
possible care for your feet**

**Book your appointment:  
01372 454583**



**Bookham  
Chiropody & Podiatry Clinic**  
Diagnosis, Expert Treatment & Professional Care  
for Your Feet

**29 High Street, Great Bookham KT23 4AA**  
www.bookhamchiropody-podiatry.co.uk

**EDE BROS**  
REMOVALS • STORAGE • SHIPPING

• Since 1926, Capel-based and family owned  
• STRESS-FREE, local, national & worldwide  
• Contact us for your **FREE** estimate...

**01306 711293**  
edebros.co.uk



Gill and Paula would like to warmly welcome you to Aspen Care offering assistance to enable you to live in the comfort of your own home with care and companionship.

- A happy alternative to a care home
- Cover while your family or carer takes a holiday
- Recuperation and rehabilitation following a hospital stay
- All aspects of personal care medication and meal prep
- Dementia care disability chronic & critical conditions end of life care
- Accompaniment to appointments

Call for a chat to discuss your requirements.

We look forward to hearing from you.

01737 354821 info@aspensliveincare.co.uk www.aspensliveincare.co.uk

**ALFA  
CHIMNEY SWEEPS**

• Clean prompt work  
• 30 years' experience  
• Specialist advice for old/problem chimneys  
• Weekday and weekend service  
• Fully insured

**01306 883455**



**YOUR LOCAL FARM SHOP ON DENBIES WINE ESTATE**

**farm shop deli plant centre**

**FREE PARKING** www.vgfarmshop.com **01306 880720**

Open Tuesdays to Sundays 9.30 a.m. to 5.30 p.m.

- Fresh fruit & veg – local & home grown
- Great range of local cheese
- Fresh bread cakes croissants & pastries
- Cook ready meals; Bangers Galore sausages

**LOCAL \* NATURAL \* ETHICAL**

**Seville Oranges**  
for marmalade making  
**Sicilian blood oranges**  
**English apples & pears**  
**Local Cheese**



On 15<sup>th</sup> December I found myself in the audience for Mickleham Choral Society's Carol Party for only about the third time in the 48 years I have been a member, and what fun it was. A party atmosphere in the brightly decorated village hall prevailed with choir members in festive dress. There was an array of hats, strings of fairy lights and amazing Christmas-themed spectacles, including Christmas pudding sunglasses. Nevertheless, when it came time to sing, the frivolity was replaced by lovely music-making.

Sparkly conductor Juliet Hornby had chosen a varied programme of well-loved carols and Christmas songs,

## Mickleham Choral Society's Carol Party

including the traditional favourites for everyone to sing. There were some modern ones as well. My favourite was Will Todd's *My Lord has Come*, with its expressive melody and sense of awe. I also enjoyed the witty less-serious piece called *Blah Blah Bethlehem*, which reveals the perfect formula for writing a Christmas song. Its composer, Ian Assersohn was in the audience, as he happens to be the husband of our very talented accompanist Jan.

At intervals during the programme there were readings, carefully selected by Anne Weaver. Emma started with Fanthorpe's *What the Donkey Saw*, giving this little beast's view of the nativity. Next came *The Innocents* by Charles Causley and read by David Kennington. A very dark poem about a visitor which turns out to be Herod, not Jesus. Rachel Gibb then read Pam Ayers' *Eat, Drink and be Sick*. Ah, the excesses of the season! And finally, one

of the highlights of the evening was flat-hatted Andy Diamond's *A Yorkshire Messiah*, in which a Yorkshireman tells a friend about attending a performance of the *Messiah* for the first time. Hilarious.

After the last note was sung, the raffle drawn, and thanks given, chairs were quickly cleared away and a long table down the centre of the hall appeared laden with trays and plates of all sorts of sweet and savoury nibbles. Countless glasses of delicious mulled wine emerged from the kitchen – all consumed while everyone chatted with friends and new-comers.

Many thanks to all involved in making the evening such a success. I highly recommend that choir members occasionally sit out a concert. It was very heartening to hear what a lovely sound the choir makes and realise just how much we have improved over the years.

Sue Tatham



## Greedy Goats Gobble Up Christmas Trees!

Staff at Surrey Wildlife Trust have come up with a novel way of recycling their old Christmas trees – feeding them to their herd of greedy goats! The animals have been munching their way through the prickly pines this week at their winter home at Pond Farm in Wisley.

'Our grazing goats have been loving their special New Year treat and it is a great way to recycle our unwanted Christmas trees!' said grazing officer Jo Saunders. 'While it's not true that goats will eat anything, they are very curious and will eat a wide variety of plants. They are able to eat very prickly plants easily - favourites include gorse, bramble and of course Christmas trees! This makes them excellent scrub managers.'

The Trust now has a herd of nearly 20 goats, which originated from feral populations on the coasts of Devon and North Wales back in 2009. The animals are used for conservation grazing, which is the most natural way of looking after the landscape – and goats can access areas that machinery can't.

The animals also have less impact than burning or cutting would, so allowing slower moving species to thrive.

'The goat's job is simply to eat!' added Jo. 'We put them out onto nature reserves in small paddocks to eat woody species, which stop them from taking over

precious habitats such as heathland and chalk grasslands.' In the summer you may find the goats on heathland sites like Wisley Common and nearby Esher Common, where they munch through young pine and birch trees, conserving habitats for ground-nesting birds such as nightjars and Dartford warblers.

The goats are also used on chalk grasslands like Hackhurst Down and Betchworth Quarry, where they eat invading brambles and ash saplings,



protecting the precious chalk grassland for butterflies and orchids.

You can help the Trust continue its vital conservation work and help protect our special habitats by adopting a goat for just £25. Each adoption will contribute to the care of the animals through the purchase of fencing materials, medical equipment and winter feed.

To find out more about our animal adoptions visit [www.surreywildlifetrust.org/adopt](http://www.surreywildlifetrust.org/adopt)



## Mickleham and Westhumble Horticultural Society Sourcing this season's Seeds



Most interested gardeners take advantage of the various seedsmen's online websites to view the variety and cultivars they offer. I have yet to come across a comparison website such as for car insurance but there are interesting differences to be found, in particular, areas to do with price and the number of seeds in a packet (Franchi are said to be generous). Most important for the gardener is the information given about the various varieties, e.g. of sweet pea or courgette that are on offer. Both a website or a catalogue offers hugely increased opportunities to choose exactly what you want to grow rather than a seed packet that is on offer at your local garden centre where in spite of what can appear to be a vast choice is often comparatively limited in scope. We probably all know firms such as Suttons, Marshalls or Thompson & Morgan but there are quite a few less well-known companies that are worth trying.

An old favourite of mine is Simpson's Seeds, a family-run business that operates out of a walled garden near Warminster in Wiltshire. They specialise in tomatoes, chilli and sweet peppers and salad leaves but they also stock a good selection of other vegetable seeds as well as some flower seeds. Plug plants of many varieties are available and have always done well for me. No pictures but good descriptions that demonstrate their personal experience.

An independent company called Suffolk Herbs was taken over by King's Seeds some years ago but they still have their own section in King's catalogue. They specialise in unusual varieties and source seed from organic sources as far as possible. Herbs, wild and country garden flowers predominate.

King's Seeds offer a fully comprehensive catalogue covering vegetable seed, fruit and shrub and flower seed. Illustrated, a good selection of vegetables and fairly down to earth descriptions.

My favourite and the most comprehensive catalogue that I know is Chiltern Seeds, called 'Grow something New from Seed'. Totalling 187 closely packed pages, it contains a huge variety of plant seeds with individual, sometimes idiosyncratic but inspiring descriptions. It is a book to browse in the winter months and will surely persuade you to

try something new. Some photographs. There is also a separate 'Veg Book' which looks good but I haven't bought from it.

The Real Seed Co. is a small independent, recommended by Alys Fowler of *The Guardian* particularly for vegetables. Seeds are open pollinated, no hybrids or GM. Edwin Tuckers is one of the oldest independents, very popular in northern counties, and contains some very old varieties. Franchi, mentioned before, have a super selection of salad leaves and basil as well as other vegetables suited to the hotter climate. One can always try fennel! Pennard Plants run an expanding business from a Victorian Walled Garden in Somerset. They employ organic elements of culture and grow a good selection of edible plants, heritage and heirloom seeds.

So while it rains and the skies lour down on us, check your last year's left overs and as a general rule don't keep anything more than two years old (although you could test germination by growing seeds between two layers of damp kitchen paper and put in a warm place to sprout - or not). Then order fresh - tried and tested old favourites and something you have never grown before!

Judy Kinloch  
**PS** This is by no means an exclusive list - I am sure there are lots more readers could add.

## The Garden Shed Christmas Wreath Making workshop

Photograph: Pauline Davis



On Saturday 2<sup>nd</sup> December. The Garden Shed held their Christmas Wreath Making workshop in Mickleham Village Hall. The morning began with Fiona Taylor and her mother Janice demonstrating different ideas on how to create your wreath. Then the fun

began, a buzz of activity started while people chose from freshly picked greenery, ribbon, dried fruits and a selection of different adornments.

With Christmas Carols playing, mulled wine and mince pies the three hours flew by, and all participants finished

very happy with their creative wreaths, and table decorations. All ready to hang on their doors or adorn their Christmas table.

We will be repeating this successful workshop next December.

Susie Gowenlock



### Coming events ...

#### THE GARDENING YEAR MONTH BY MONTH a talk by Ray Broughton

Friday 23<sup>rd</sup> February at 7.30 pm  
The Stepping Stones Pub, Westhumble  
Sharing session - bring along any spare plants, seeds, seedlings, cuttings, books etc. to swap.  
Tickets: £6 at the door

#### FRUIT TREE PRUNING COURSE

A practical course designed to teach us how to prune apple, pear and other fruit trees

Sunday 4<sup>th</sup> March 10.15 a.m. - 1.30 p.m.  
Chapel Farm, Westhumble

Instructor: Alex Valsecchi - Manager of Albury Vineyard

Alex Valsecchi achieved a doctorate in Horticulture at Milan University in 1996. Following several years' practical experience working on vineyards in Italy and New Zealand, she joined RHS Wisley, responsible for the orchard, nursery, model fruit area and the vineyard which she planted.

£10 per person - Maximum 20 places available, on a first-come, first-served basis.

To secure a place, please make your payment as soon as possible. Your place will then be confirmed.

Cheque (payable to:- The Garden Shed) and sent to Pauline Davis at 3 Crabtree Cottages, Westhumble, Surrey. RH5 6BQ

Bank Transfer - The Garden Shed. a/c no. 10821752. Sort Code 09-01-29

What to Bring - Gardening Gloves, Secateurs and a Pruning Saw.

Pauline Davis 07759 646 353 or paulinemdavis@gmail.com  
Susie Gowenlock 07768 923 088 or susiegowenlock@gmail.com

## Mickleham & Westhumble Local History Group

### AGM followed by Time Gentlemen Please!

The Story of Dorking Pubs\*

An illustrated talk by David Langford

Friday 16<sup>th</sup> February

7:30 for 8 p.m.

Mickleham Village Hall

Non-members welcome. Fee: £3



\*Including *The Beehive* and *The Stepping Stones*



## Not feeling as well as you'd like?

Counselling • Mind & Body Healing  
Reiki Treatments • Shamanic Healing  
Meditation • Courses & Workshops

"I have been on a life-changing journey the benefits of which will be with me forever." ARJ Surrey



Call Judith Cobby  
on 01306 882229  
or 07790 614448

[www.healing-inspiration.co.uk](http://www.healing-inspiration.co.uk)



## NJB DOMESTIC CLEANERS

come home to a clean home

Mother and son business  
Fully insured

Weekly or fortnightly cleans  
One-off spring cleans  
End of tenancy cleans  
Shops offices and communal areas

[ncbdomes@aol.c.uk](mailto:ncbdomes@aol.c.uk)

Please ring Nick: 07717 763 380  
or Chris: 07780 670491

## Ballroom Dancing Latin American Dancing Professional Training [IDTA]

Private lessons only  
Sunday & Monday evenings  
6 - 10 p.m.

At Mickleham Village Hall  
Dell Close Mickleham Surrey RH5 6EE  
07901 742 887  
[vmvdancing@gmail.com](mailto:vmvdancing@gmail.com)



IDTA Qualified Teacher

## STEVE & TIM LANGLEY

Experienced craftsmen

ANTIQUE RESTORATION  
CABINET MAKING  
FRENCH POLISHING

Free estimates collection & delivery  
01372 457700  
07960 486455 07847 769517

## Road and Competition Engineering Ltd

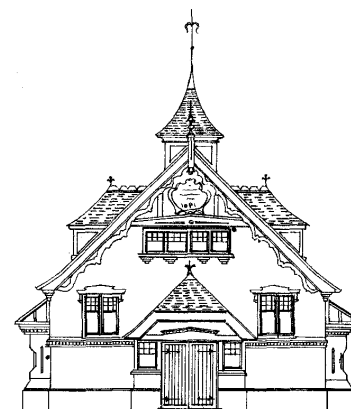


Specialists in the  
maintenance and  
restoration of  
historic road and  
race cars

From general servicing performance  
modifications engine/gearbox rebuilds  
to full restorations. We also offer vehicle  
storage. Our workshop is based in Charlwood



Jamie Mason 07840 698452 [www.raceltd.com](http://www.raceltd.com)



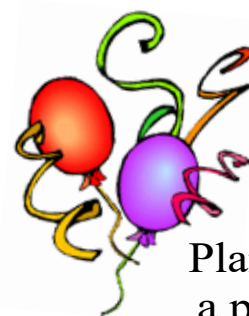
## Mickleham Village Hall available for hire

Hall bookings  
Table & chair hire

Deanna Darnell  
01372 388474  
07790 941 601

[d\\_darnell\\_MVH@hotmail.co.uk](mailto:d_darnell_MVH@hotmail.co.uk)

[www.surreycommunity.info/  
micklehamvillagehall](http://www.surreycommunity.info/micklehamvillagehall)



Planning  
a party?

Equipment  
available for hire

China ~ Cutlery  
Electric urn

Equipment hire  
Mary Banfield  
01372 373912  
[mgbbmw@aol.com](mailto:mgbbmw@aol.com)

## Community Directory

Box Hill (National Trust)  
Head Ranger – Mark Dawson 01306 885502  
[mark.dawson@nationaltrust.org.uk](mailto:mark.dawson@nationaltrust.org.uk)  
Friends of Box Hill – Chair Mrs Lyn Richards 01737 842889  
[lyn@mra.uk.net](mailto:lyn@mra.uk.net)

Box Hill School  
Headmaster – Cory Lowde 01372 374814  
[hmsec@boxhillschool.com](mailto:hmsec@boxhillschool.com)

DORKING CRICKET CLUB  
Chairman – David Spackman 07831 859232  
[david@theimagecompany.co.uk](mailto:david@theimagecompany.co.uk)

DORKING GROUP OF ARTISTS  
Exhibition Secretary – Patricia Booth 01737 24491  
[patriciabooth100@gmail.com](mailto:patriciabooth100@gmail.com)

DORKING LAWN TENNIS & SQUASH CLUB  
Jim Cattermole 01306 883629  
[jim.cattermole@uwclub.net](mailto:jim.cattermole@uwclub.net)

DORKING RUGBY CLUB  
Jim Evans 07789176417  
[jim@flintcottage.net](mailto:jim@flintcottage.net)

THE GARDEN SHED  
Pauline Davis 07759 646 353  
[paulinemdavis@gmail.com](mailto:paulinemdavis@gmail.com)  
Susie Gowenlock 07768 923 088  
[susiegowenlock@gmail.com](mailto:susiegowenlock@gmail.com)

JUNIPER HALL FIELD CENTRE 01306 734501  
[enquiries.jh@field-studies-council.org](mailto:enquiries.jh@field-studies-council.org)  
Head of Centre – Simon Ward [Simon.lr@field-studies-council.org](mailto:Simon.lr@field-studies-council.org)  
Friends of Juniper Hall – Mrs Suzy Hughes 01372 275393  
[suzyhughes@businessetiquetteint.com](mailto:suzyhughes@businessetiquetteint.com)

MICKLEHAM CHILDREN'S PLAYGROUND ASSOCIATION  
Secretary – Mrs Sarah Parfitt 07767 891772  
[sarah@sarahparfitt.com](mailto:sarah@sarahparfitt.com)

MICKLEHAM CHORAL SOCIETY  
THURSDAYS 8 - 10 P.M. – MICKLEHAM VILLAGE HALL  
Conductor – Miss Juliet Hornby 01372 373106  
Secretary – Mrs Anne Weaver 01306 883932  
[www.micklehamchoral.org.uk](http://www.micklehamchoral.org.uk) [weaver\\_anne@hotmail.com](mailto:weaver_anne@hotmail.com)

MICKLEHAM OLD BOX HILLIANS FOOTBALL CLUB  
Secretary – John Atewell 01372 374745

MICKLEHAM PARISH COUNCIL  
SEE WEBSITE FOR MEETING DATES [www.micklehampc.org.uk](http://www.micklehampc.org.uk)  
Chairman – Rev'd David Ireland 01372 379381  
[rev.ireland43@btinternet.com](mailto:rev.ireland43@btinternet.com)  
Parish Clerk – Trevor Haylett [trevor.haylett9@gmail.com](mailto:trevor.haylett9@gmail.com)

MICKLEHAM PARISH MAGAZINE  
Editor – Mrs Sue Tatham 01306 882547  
[sue@thetatham.co.uk](mailto:sue@thetatham.co.uk)  
Deputy Editor – Charlotte Daruwalla 01306 884025  
[chardaruwalla@tiscali.co.uk](mailto:chardaruwalla@tiscali.co.uk)

MICKLEHAM VILLAGE HALL  
Chairman – Ben Tatham 01306 882547  
[ben@thetatham.co.uk](mailto:ben@thetatham.co.uk)  
Bookings Manager – Mrs Deanna Darnell 01372 388474  
07790 941601  
[d\\_darnell\\_MVH@hotmail.co.uk](mailto:d_darnell_MVH@hotmail.co.uk)

Continued on page 16.

## Rowlatt Garden Services

# RGS

EST.1985

Gardens large and small  
we maintain them all

All aspects of private and commercial garden  
and estate maintenance landscaping undertaken  
Fencing grass & hedge cutting

Telephone: 01737 844373 Mobile: 07887 838666  
References available upon request

## In Pain? We Can Help Dorking Chiropractic Clinic

Dr Graham M Allen & Associates

- Back Pain and Sciatica
- Hip, Knee, Foot and Ankle Pain
- Neck Shoulder and Arm Pain
- Headaches and Migraine
- Sports/Occupational injuries
- RSI/Carpal Tunnel
- Back Pain in Pregnancy
- Arthritic Pain
- Trapped Nerves
- Joint Problems

01306 887793

316 High Street Dorking RH4 1QX  
[www.dorkingchiropractic.co.uk](http://www.dorkingchiropractic.co.uk)

HSA

Registered by the General Chiropractic Council • Member of the British Chiropractic Association

## DORI VANA PLUMBING YOUR LOCAL PLUMBER

EXPERIENCED RELIABLE  
AND PROFESSIONAL

From changing washers to changing bathrooms

CALL DORI

07977 220465 / 01306 887282

Proud members of  
**Checkatrade.com**  
Where reputation matters



## ST MICHAEL'S CHURCH

*within the United Benefice  
of Leatherhead and Mickleham*

Incumbent – The Rev'd Graham Osborne  
01372 372313

*DURING THE 'VACANCY' ANY CHURCH-RELATED MATTERS  
SHOULD BE TAKEN TO ONE OF THE CHURCHWARDENS  
IN THE FIRST INSTANCE.*

### CHURCHWARDENS

John Banfield 01372 373912  
banfieldjohn@aol.com

Mrs Anne Weaver 01306 883932  
weaver\_anne@hotmail.com

### PARISH ADMINISTRATOR

Mrs Alison Wood 01372 376443  
admin@micklehamchurch.org.uk

### PCC SECRETARY

Mrs Elizabeth Moughton 01306 883040  
eliz.moughton@btinternet.com

### TREASURER

Richard Siberry 01372 375303  
Siberrman@aol.com

### WEDDINGS ORGANISER

Mrs Mary Flint 01372 363115  
maryflint8@gmail.com

### BAPTISMS CO-ORDINATOR

Mrs Vickie Leney 01306 884054  
vleney100@gmail.com

### FUNERALS ORGANISER

Brian Wilcox 01372 374730  
dbrianwilcox@sky.com

### WEBSITE MANAGER

Mrs Sarah Ward 01372 383350  
sarwar\_63@hotmail.com

[www.micklehamchurch.org.uk](http://www.micklehamchurch.org.uk)

*For information about services for other  
denominations see website pages.  
Search on 'Churches Together Mole Valley'*

## PARISH REGISTERS

### INTERMENT OF ASHES

9<sup>th</sup> December 2017 Roger Anthony Capel (75)  
into the existing grave of the late Annie  
Frances Butcher and Alfred Henry Butcher



## Calendar of Events

### FEBRUARY

|    |  |                 |  |
|----|--|-----------------|--|
| 1  | Thursday                                   | 11 a.m.         | Bible Study Group meets  |
| 3  | Saturday                                   | 2.30 p.m.       | Friends of Box Hill AGM and talk on<br>Forensic Ecology  |
| 4  | <b>SUNDAY – 2<sup>nd</sup> before Lent</b> |                 |  |
|    |  | 8 a.m.          | Holy Communion (Order 2)   |
|    |  | 10 a.m.         | Holy Communion   |
| 8  | Thursday                                   | 11 a.m.         | Bible Study Group meets  |
| 11 | <b>SUNDAY – Next before Lent</b>           |                 |  |
|    |  | 8 a.m.          | Holy Communion (Order 2)   |
|    |  | 10 a.m.         | Holy Communion   |
|    |  | 11.30 a.m.      | Morning Prayer. Westhumble Chapel  |
| 15 | Thursday                                   | 11 a.m.         | Bible Study Group meets  |
| 16 | Friday                                     | 7.30 for 8 p.m. | M&W Local History Group AGM<br>and talk on The History of<br>Dorking's Pubs. Village hall                              |
| 17 | Saturday                                   | 9 a.m.          | Men's breakfast. The Running Horses  |
|    |  | 2 p.m.          | Wedding in St Michael's  |
| 18 | <b>SUNDAY – Lent 1</b>                     |                 |  |
|    |  | 8 a.m.          | Holy Communion (Order 2)   |
|    |  | 10 a.m.         | Holy Communion   |
| 22 | Thursday                                   | 11 a.m.         | Bible Study Group meets  |
| 23 | Friday                                     | 7.30 p.m.       | Youth Group going bowling<br>Garden Shed – <i>The Gardening Year</i><br><i>Month by Month</i> . The Stepping<br>Stones |
| 24 | Saturday                                   | 9 a.m.          | Women's breakfast.<br>The Running Horses   |
| 25 | <b>SUNDAY – Lent 2</b>                     |                 |  |
|    |  | 8 a.m.          | Holy Communion (Order 2). Chapel   |
|    |  | 10 a.m.         | Holy Communion   |
| 26 | Monday                                     | 3 p.m.          | Tea@3. Cleveland Barn, Westhumble  |

### DATES FOR YOUR DIARY

Sunday 4<sup>th</sup> March – Fruit Tree Pruning Course  
Saturday 30<sup>th</sup> June – Strawberry Tea  
Saturday 21<sup>st</sup> July – Village Party

## MEMBERS OF THE PAROCHIAL CHURCH COUNCIL

James Aarvold John Banfield Carole Brough Fuller  
Mark Day Jenny Hudlass Elizabeth Moughton  
James Riches Richard Siberry  
Amanda Wadsworth Simon Ward  
Paul Wates Anne Weaver Colin Wyld

## TOOLS WITH A MISSION (TWAM)

[www.twam.co.uk](http://www.twam.co.uk)

TWAM is a Christian charity committed to the recycling and refurbishment of tools which then can provide a means for poorer people in developing countries to learn a trade and be able to support themselves and their families. With this practical help thousands of young men and women have benefited from the skills they have learned. They need:

- garden forks & spades saws hammers drills pickaxes etc
- sewing or knitting related tools thread zips scissors
- embroidery items fabric and sewing machines
- wool and knitting needles patterns
- portable typewriters printers and laptops

If you have any of the above which could be used to help someone to have a better quality of life and hope for the future please contact Carole Brough Fuller: 01737 842918 [cbroughfuller@btinternet.com](mailto:cbroughfuller@btinternet.com)

## HELPING HANDS

INCLUDING FOOD FOR FRIENDS

*A service for all residents of Mickleham and Westhumble*

Examples of services we offer:

- Transport for visits to doctor's surgery or hospital
- Essential shopping / collection of prescriptions
- Changing library books
- Small tasks: eg changing fuses altering clocks etc
- Dog walking / care of pets
- Visiting / befriending
- Home-cooked meals for local families going through difficult times

Requests to Mary Banfield 01372 373912  
or leave a message on answerphone.  
Callers will be contacted within 24 hours

*More helpers needed – please contact  
Mary if you can spare some time.*



# Community Directory

Continued from page 13

|  |   |
|--|---|
| MICKLEHAM & WESTHUMBLE BOOK CLUB                   |   |
| Mrs Bernice Bailey                                 | 01306 741310<br>bpbailey_uk@yahoo.co.uk                                     |
| MICKLEHAM & WESTHUMBLE CRICKET CLUB                |   |
| Team Secretary – Will Dennis                       | 01372 372684<br>will@micklehamhallfarm.co.uk                                |
| MICKLEHAM & WESTHUMBLE HORTICULTURAL SOCIETY       |   |
| Chairman – Mrs Judy Kinloch                        | 01372 375358<br>mail@jkinloch.plus.com                                      |
| MICKLEHAM AND WESTHUMBLE LOCAL HISTORY GROUP       |   |
| Chairman – Ben Tatham                              | 01306 882547<br>ben@thetatham.co.uk   |
| MOLE VALLEY DISTRICT COUNCIL                       | 01306 885001  |
| Councillor – Duncan Irvine                         | 07738 384287<br>duncan.irvine@molevalley.gov.uk                             |
| THE ARTS SOCIETIES (FORMERLY NADFAS)               |   |
| Betchworth – Miss Mary Venning                     | 01306 883301  |
| Dorking – Mrs Sue Tatham                           | 01306 882547  |
| Leatherhead – Mrs Sarah Sheridan                   | 01306 883699  |
| ST MICHAEL'S CHURCH OF ENGLAND (A) INFANT SCHOOL   | 01372 373717<br>info@stmichaels-dorking.surrey.sch.uk                       |
| Friends of St Michael's School                     |   |
| Co-chairs Danielle Morrison and Debbie Turner      | friendsofstmichaels2017@gmail.com   |
| ST MICHAEL'S COMMUNITY NURSERY                     |   |
| WEEKDAY MORNINGS – MICKLEHAM VILLAGE HALL          |   |
| Supervisor – Mrs Hilary Budd                       | 01372 361021  |
| SURREY COUNTY COUNCIL                              | 03456 009 009   |
| Councillor – Mrs Hazel Watson                      | 01306 880120<br>hva.watson@btinternet.com                                   |
| SURREY WILDLIFE TRUST                              | 01483 795440<br>info@surreywt.org.uk  |
| WESTHUMBLE RESIDENTS ASSOCIATION                   |   |
| Chairman – Holly McLaren                           | 07887 660129<br>westhumble.residents@gmail.com                              |
| WESTHUMBLE NEIGHBOURHOOD WATCH                     |   |
| Lead Co-ordinator – David Allbeury                 | 07860 227451<br>westhumble.neighbourhood.watch@gmail.com                    |
| ADDITIONAL CONTACT INFORMATION                     |   |
| CITIZENS ADVICE                                    |   |
| Dorking – Lyons Court                              | 0844 4111 444   |
| Leatherhead – Swan Mews High Street                | 0844 4111 444   |
| POWER CUT HELPLINE                                 | 0800 783 8866   |
| CRIMESTOPPERS                                      | 0800 555 111  |
| POLICE   |   |
| Non-emergencies                                    | 101   |
| (often quicker to make online report)              | <a href="https://report.police.uk/">https://report.police.uk/</a>           |
| Neighbourhood Specialist Team – Dorking Rural East |   |
| PCSO 8761 Dave Sadler                              | To contact a member of the team call 101 and your call will be put through. |
| PCSO 15904 Sophia 'Manelfi'                        |   |
| PC 2799 Sue Gargini                                |   |
| General enquiries                                  | molevalley@surrey.pnn.police.uk   |

## Babysitting by local teenagers

|                   |              |
|-------------------|--------------|
| Blue Rowland      | 01372 376712 |
| Freya Pearce      | 01306 884724 |
| Olivia Parkin     | 07887 367850 |
| Maisy Presley     | 07720 657327 |
| Isabella Pererira | 07515 489067 |
| Issy Nash         | 01306 742762 |
| Patrick Moran     | 01306 640043 |
| Katie Light       | 01306 881953 |
| Ellie Kim         | 07773 395575 |
| Ailsa Graham      | 01306 889855 |
| Philomena Ala     | 01306 885767 |
| Delphine Ala      | 01306 885767 |

*If you would like to add your name to this list please get in touch with the Editor.  
No charge.*

## Advertising in the Parish Magazine

Please contact the Editor.  
Small ads: a nominal fee is charged for ads where items or services are bought or sold.

We have been advised to print the following reminder:  
*We cannot guarantee the quality of the goods and services offered by our advertisers.*



## Congratulations to Ben Tatham, MBE

Many of you will have seen or heard that Ben was awarded an MBE in the New Year's Honours List for his contribution to the Mole Valley. Those of us who live in Mickleham and Westhumble will be aware of the huge amount of time and hard work that Ben has devoted to our communities and residents over many years and how well he deserves this honour.

It is worth highlighting some of Ben's contributions to our community life. For 47 years he has been a governor of St. Michael's School, including a long period as chairman. In this role, he played a major part in the planning, funding and provision of many new building projects, culminating in the magnificent new school hall, helping to raise £86,000 on behalf of the governors. This opened in 2015 and is fittingly called the 'Ben Tatham Hall and Library'. Ben has also been involved with the Village Hall for many years and acted as project manager when it underwent a major refurbishment and extension in 2005. This allowed for the establishment of a special nursery facility to provide an outstanding start to the education of local children. And

in 2010 he oversaw the extension of the village hall car park. Ben was also a governor of Box Hill School for 15 years. In addition to his full-time employment, Ben was elected to represent the community first on Dorking Urban and later Mole Valley District Councils for a total of 41 years beginning in 1970 and only retiring in 2011. He was for some time chair of the Housing Committee, helping to persuade the committee to agree to new council housing. He chaired many of the committees over the years and held the chairmanship of the Council in 1980-81. Ben was often responsible for finance and Council assets, presenting many budgets. In recognition of his contribution he was awarded the Freedom of Mole Valley on his retirement.

Ben has always had an active interest in our environment and has been involved in the management of Box Hill for 44 years, firstly as a member of the management committee and then its chairman until the Hill management was handed over to the NT in 1991. He is currently President of the Friends of Box Hill and serves as a committee member. For nine years Ben was



Photograph: Sue Tatham

vice-chairman of the Southern Region Committee of the National Trust.

In all his activities, including the comparatively recent venture of the local history group, Ben has shown himself to be hands-on, whether sorting the heating the Village Hall or removing ivy from local graves so that the inscriptions could be recorded. His photographs of community life provide yet another record for us to cherish.

We are very fortunate to have someone as able and committed to our community as Ben. I am sure, however, that he would not want Sue's contribution to go unrecognised. Thank you Ben, thank you Sue – our dynamic duo – we live in a better, more connected place because of you.

Roger Davis



## A plea from the editors ...

Each month we receive a great number of emails relating to parish magazine matters. Often we cannot deal with them straight away, so after acknowledging that we have received them, they are filed away in the appropriate MPM folder. When magazine time arrives, it is extremely frustrating to find a folder full of messages all with the same title. For example, many of them have been sent as a reply to our deadline reminder, so that is the name that appears. (This month I received more than 10 emails entitled 'Re: MPM Production Schedule 2018'). Sometimes there is

no title at all. Only the sender's name gives an indication of its contents and in some instances, the message has been forwarded by someone else, so searching on names does not always work either.

Then we come to the names of the attached files, frequent examples include 'MPM copy', 'article for next mag', 'newsletter item', 'December mag' etc. And then to add to the search problem an amended copy is sent using its original name.

It would be tremendously helpful when you send us an email and/or file that you make sure that its title gives an indication of its contents, organisation (where appropriate) and date.

Here are some suggestions:

- Carol Concert report Feb18mag
- Carol Concert report Feb18mag 2
- Carol Concert report Feb18MPM - amended copy
- LHG appeal Feb 18 MPM
- JPT Small ad for Feb MPM
- Changes to LHG report Feb'18
- BT Workshop pix Feb mag

And another gentle reminder. It would be great if you would let us know when you have received an email from us, even if it is 'OK – will get back to you'.

Despite this moan, we are very grateful for whatever you send us. Please keep it coming.

Sue & Charlotte

## Does running late count as exercise?



## Community News

Congratulations and best wishes to:

- Jonathan Cain and Kathleen Purvis who were married on 22<sup>nd</sup> December at Farnham Castle. Jonathan's sister Rosie was one of the bridesmaids. They are the children of Cathy and the late Stuart Rawson-Cain of Pilgrims Way.

- Derek Bailey of Dell Close who celebrated his 90<sup>th</sup> birthday on 5<sup>th</sup> January. Derek has delivered the parish magazines to houses in his area for well over 20 years.

We are very sorry to record the deaths of two former Mickleham residents:

- Helen Sutherland who lived at White Hill Cottage, Headley Lane for some time before moving to West Sussex. On 15<sup>th</sup> December. A service of thanksgiving for her life took place on 2<sup>nd</sup> January in West Chilington. We send our love and deepest sympathy to Daphne.

- Ron Morton who lived at The Old Post Office, Old London Road, who died on 16<sup>th</sup> December aged 71. His funeral was held on 12<sup>th</sup> January at St David's Church, Moreton in Marsh. We send our love and deepest sympathy to Kate and family.

### George Swallow

It is with sadness we report the death of George Swallow on 19<sup>th</sup> December after a short illness. We hope to include an obituary in next month's magazine. In the meantime we send our love and deepest sympathy to Geraldine and family.

## Two Mickleham Residents and an Earthquake

Late Sunday 12<sup>th</sup> November 2017 there was a massive earthquake on the border of Iran and Iraq just south of the Iraqi city of Halabja. It was the strongest earthquake of 2017 magnitude 7.3. Casualties were limited by the remoteness of the area but nevertheless over 400 people died and 8000 injured.

Two hundred miles south of the epicentre, John Banfield was staying at St George's Church in Baghdad and was having dinner with the priest Father Faiz, his family and a couple of other guests. Even at that distance the effect

was quite dramatic. The building shook, furniture moved and for a moment or two there was concern there would be damage to the buildings. 400 miles still further south Mike Wood was on business in Kuwait and was also sitting down to dinner. Even 600 miles away from the epicentre glasses and cutlery moved on the table and it was quite clear there had been an earthquake.

Two residents of Mickleham and one earthquake. Is that a small world or a big earthquake? Was anyone else there?

John Banfield

## Calling all aspiring badminton players – novices or experienced



Box Hill School has offered the community the opportunity to use their new Sports Hall, due to be ready for use in early summer, on a weekday evening from 6 to 8 p.m. at a very reasonable cost. If you might be interested in

joining the Mickleham and Westhumble Badminton Club, please email David Ireland on [rev.ireland43@btinternet.com](mailto:rev.ireland43@btinternet.com). We will need to make a decision as to the viability of such a club by late February.



Can you translate this diagram into words? Say what you see. Answer on page 26.

## Notes from Mickleham Parish Council

Mole Valley District Council's desire to add between 5-10% to the local housing stock was outlined to Mickleham Parish councillors and members of Westhumble Residents Association as well as members of the public at an open meeting last month. It was part of a series of presentations MVDC is undertaking throughout the district to explain that action needs to be taken to tackle the housing shortage – particularly in affordable housing. Adding 'modest' growth to every village is one of the district council's preferred options.

Accordingly, a call has gone out to landowners to submit sites that may be suitable for development. At the same time, parish councils and residents associations are being asked to suggest areas where development could take place.

At the presentation, held at St Michael's Church on 10<sup>th</sup> January, Claire Mallalieu, a MVDC planning policy officer, explained that the aim was to breathe new life into villages and ensure that schools and public houses were able to continue there.

Mrs Mallalieu added that there was also the opportunity to review village boundaries; for instance the Village Hall and Dell Close were not within the Mickleham village boundary and

could be brought into it. Altering the boundary would enable possible development of the additional land that results.

There was discussion about land owned by AP and AF Jeans, fronting Westhumble Street in Westhumble, which had been put forward as a possible area for development – the only parcel of land in either Mickleham or Westhumble to be suggested at the time of the meeting.

Mrs Mallalieu said it was clear from the comments from those attending that smaller housing units were strongly favoured for both villages, nothing bigger than a three-bedroomed property. She said housing estates were definitely off the agenda while any new development had to be sensitively designed to reflect and respect neighbouring listed buildings as well as conservation areas.

Those attending were asked to channel any feedback to MVDC via the Parish Council Clerk. A further consultation period will begin in early autumn.

• • • • •

Mickleham Parish Council considered at its January meeting, two planning applications related to Mickleham Downs Cottages and Mickleham Downs House on the Cherkley Court Estate. The



PC gave its unanimous support to both, with a couple of representations.

The first proposal is to make extensions to the existing cottages and outbuildings and relocate and redevelop the existing garage (the Bothy) to provide ten family hotel suites and administration accommodation.

The second proposal provides for a part two storey/part single storey side extension to Mickleham Downs House and change of use to provide a guest house.

Along with their support for both applications, councillors wanted to check the access for construction vehicles and to get a historic building recording of the current buildings.

Councillors reacted with dismay to the news that the planning application to develop Rose's Stores had been withdrawn. The shop and accompanying accommodation is being re-marketed.

Trevor Haylett, Clerk  
[trevor.haylett9@gmail.com](mailto:trevor.haylett9@gmail.com)

# Strawberry Tea

## in aid of St Michael's Church

### Saturday 30th June

#### at the Village Hall

**Everyone welcome**

**Children's activities and delicious refreshments**

**Please save the date**

LOOK FORWARD TO

# HALCYON DAYS

AT THE

2018 MICKLEHAM VILLAGE

SUMMER PARTY

AT JUNIPER HALL

## SAVE THE DATE

SATURDAY 21ST JULY

Do you know any 10-to-17-year-olds who love to sing? Tell them about the exciting new LHM Young Singers. See details on page 21.



## NEED A CARER?

Highly experienced qualified carer available

Hours to suit your needs

Cheryl 07810 881 267

## TRUGREEN® Professional LawnCare

*A lawn is never JUST a lawn*

- Fertilisation • Weed and moss control • Aeration
- Scarification • Insect control • Disease treatment
- Hard surface weed control

Call now for a free LawnCare Analysis

**01306 644886**

TruGreen (Epsom)

Michael Beecheno The Cottage Pilgrims Way Westhumble

Starting at just £20 per treatment AServiceMASTER BRAND



Extensions and alterations often require a  
Structural Engineer

## Robert Wynter & Partners Ltd

**01306 879875**

Book House Vincent Lane  
Dorking RH4 3HW

## Painting

Decorating tiling  
Curtain & blind hanging  
Wallpapering

Furniture assembly etc.

- Fully insured
- Free estimates
- References available

Tel: Martin 07770 441 201



## Vivien Cresswell Made-to-measure Soft Furnishings

Curtains Roman Blinds Cushions



Extensive range  
of fabrics

**01737 843858**

[www.cresswellscurtains.co.uk](http://www.cresswellscurtains.co.uk)

## Mike Palmer

**Electrical Services**

Part P registered electrician



From additional lighting and sockets  
to complete rewires

Fully insured Registered with the NICEIC

07866 930483 [mike@mikepalmer.biz](mailto:mike@mikepalmer.biz)

Boxhill Way Strood Green Betchworth RH3 7HY



## KING WILLIAM IV

Happy new year! We wave goodbye to 'dry January' and welcome thirsty February.

We are looking for staff as we prepare for the coming season. Most of our long-term university students have now completed their degrees and have moved on to their chosen fields. So if anybody knows of any 16+-year-olds looking to earn some extra money ask them to get in touch. We would particularly like 1<sup>st</sup> year university students who come back to the area

for holidays – which is when we are at our busiest.

It's been great to have the log fire going over the winter but I must admit it will be nice when we get to the stage when we don't need it. The King Willy loves the sunshine.

See you soon Eamonn and Anne

Byttom Hill Mickleham 01372 372590 [www.thekingwilliamiv.com](http://www.thekingwilliamiv.com)



## Dorking Museum and Heritage Centre

62 West Street Dorking RH4 1BS Open Thursday Friday Saturday 10 a.m. – 4 p.m.

[www.dorkingmuseum.org.uk](http://www.dorkingmuseum.org.uk) 01306 876591

Our new exhibition opened in the Museum at the end of January and offers something a little different. 'A New View of Dorking' consists of a selection of images created by members of Capel Camera Club, featuring beautiful landscapes and iconic images of our stunning market town and the surrounding villages and countryside. Images are presented by a group of both amateur and professional photographers who have come together to create this joint project.

The idea for the exhibition came about after Club member Jayne Kemp, a former professional photographer and Licentiate of the Royal Photographic Society, became a volunteer at the Museum. Jayne, who has been a Dorking resident all her life, thought

it would be interesting to create some new images of the local area as a record of our town, and other members of the camera club were keen to be involved. The idea evolved from there when the Museum offered to display the collected work.

The photographers were given freedom to express themselves and compose their pictures according to whatever inspired them in Dorking and the surrounding areas. Jayne herself selected a striking image of St Martin's Church spire sunlit against a bright blue sky, while Leslie Bliss's image shows the iconic Dorking Cockerel standing silver against a darkened background. But these contrast with closer up shots like Liz Lamb's of a squirrel in St Martin's churchyard and Angela Rixon's



Carved head on St Michael's lychgate  
Detail from photograph by Angela Rixon

of an exquisitely carved regal head on the Mickleham Church lychgate. The exhibition runs until 19<sup>th</sup> May.

David Burton

## LEITH HILL MUSICAL FESTIVAL

Leith Hill Musical Festival is forming an exciting new choir. If you are 10 to 17-years-old and love to sing this is for you.

The registration form is available on the LHMf website <http://www.lhmf.org.uk> - either complete it and return it via email to [barbarachristopher1951@gmail.com](mailto:barbarachristopher1951@gmail.com) or print it off and post it to LHMf Young Voices, Cotswolds, Martineau Drive, Dorking, RH4 2PN. If you have any questions, please telephone Barbara Christopher on 01306 884656.

## LHMf Young Voices

The amazing conductor Christopher Wray is really looking forward to meeting our Young Voices. He will teach you the music at rehearsals on Monday 12<sup>th</sup> and Tuesday 13<sup>th</sup> February at The Priory School, West Bank, Dorking, RH4 3DG from 9.15 a.m. to 4.30 p.m. (You will need to bring your own packed lunch on the two full days, but drinks and biscuits will be provided.) In order to confirm your place, you will be asked to bring £10 with you to the first

rehearsal. This will help us to pay for the hire of the music.

There will be three further rehearsals, Sunday 25<sup>th</sup> February, Sunday 11<sup>th</sup> and Sunday 25<sup>th</sup> March. These will be from 2.30 p.m. to 4 p.m.

Young Voices will make their debut on Saturday 14<sup>th</sup> April at the Dorking Halls. They will sing John Rutter's 'Mass of the Children', supported by four LHMf choral societies, orchestra and soloists, all conducted by Jonathan Willcocks.



AGM, Saturday, 3<sup>rd</sup> February  
2.30 p.m. Juniper Hall, Mickleham

Followed by a talk on

## FORENSIC ECOLOGY

Professor Patricia Wiltshire, an experienced forensic scientist and expert witness, will show us how the natural sciences have been instrumental in incriminating many criminals over the years. She will include examples involving botany, zoology, mycology, and soil science.

Please reply by e-mail to [lyn@mra.uk.net](mailto:lyn@mra.uk.net) or ring 01737 842889, so that we can estimate numbers for tea & cake – (£2 per person) and room layout. Guests are welcome.



## Domestic Appliance Repairs

30 years' experience repairing and installing all gas and electric domestic appliances



- Cookers Microwaves
- Dishwashers
- Washing machines
- Fridges / Freezers
- Water coolers
- Coffee machines
- Tumble dryers

Contact: Andy 07895 719 706  
kirk21stcentury@aol.com



07871 051661 / 01372 458616  
timskerrittgroundworks.co.uk

**TimSkerritt**  
LANDSCAPE & GROUNDWORKS

## Turn your vision into a reality

Tim Skerritt Landscape & Groundworks offers a comprehensive range of services to both commercial and domestic clients across Surrey.

From hard landscaping to extensive site excavations, we offer a high quality, honest, reliable and competitively priced service, guaranteed to meet all your needs. Contact us today to find out more.

## Julie Watts Family Law

AN AFFORDABLE AND EXPERIENCED PROFESSIONAL ALTERNATIVE TO TRADITIONAL SOLICITORS

- Divorce • Arrangements for children • Finances
- Court Proceedings

PROUD TO PROVIDE A DIFFERENT KIND OF SERVICE

- Affordable fees • Straight-talking advice
- Practical real support

Contact me for a consultation

07808 572157 juliewattsfamilylaw.co.uk

## Mole Valley Mowers

Open  
Monday to Friday  
8 a.m. - 5 p.m.  
& Saturday  
8 a.m. - 1 p.m.

All leading makes of lawn mowers  
& garden tractors catered for

Reasonable rates

Free estimates & friendly service

Paul White Bookham 01372 458008

## Need help with your accounts?

If you run your own business you will appreciate how difficult it can be to keep up with your accounting paperwork.

However meeting deadlines and understanding the financial health of your business are crucial to avoiding penalties and ensuring that the hard work you put in pays off where it matters – in your pocket

- Tailored accountancy local to Dorking – saving you time
- Fixed fees – saving you money • Free Xero software – simple invoicing

Call today to arrange a  
free no-obligation  
consultation

01737 652 852

esther@a4cgroup.co.uk  
natasha@a4cgroup.co.uk



## Betchworth Electrical Contractors

07966 239644

- Specialist in fault finding • Complete rewiring
- Additional lights and sockets
- Specialist in pools and hot tubs • Garden lighting and power
- Electrical installation condition reports
- Telephone and computer cabling • Central heating controls
- Smoke alarms to BS5839-6:2013



All work is in compliance with  
BS7671:2008 Amd. 3:2015



## Dorking Pest Control Services

Local Authority Approved Contractors



Our Services include: Wasps Bee Swarms Hornets Rats Mice  
Squirrels Fleas Flies Ants Cockroaches Bed Bugs  
Rabbits Moles Foxes and Deer



• Domestic Commercial and Industrial • Contract Work • Preventative Control Programmes

Experts in pest control throughout Surrey

Office: 01306 743001 Ivor: 07710 117491 Chris: 07971 519415

www.dorkingpestcontrol.com

## INSPIRATIONAL Box Hill School

I am sure you are all familiar with the Box Hill School flag that flies proudly outside Dalewood House. But do you know the significance of the flag, its 'rocket' crest and the associated traditions?

On Friday 3rd June 1966 a service was held to dedicate the original Box Hill School Flag. In glorious sunshine and in front of Dalewood House a brand new school flag was hoisted high up the flag pole. It was at this service in 1966 that our Founding Headmaster, Roy McComish, announced that there would be a Box Hill School flag service at the start and end of every term. OB Edzard Greffe (1980 – 1984) remembers it is the tradition that the flag is stored in the church as a symbol of protection and safety for the pupils travelling all over the world during the holidays.

We still continue to have Flag Services at St Michael's Church to this day although with the full school of 420 pupils we now struggle to fit everybody into the church.

It is worth mentioning the Box Hill School 'Rocket' itself. Designed by Roy McComish it is open to individual interpretation but Roy himself saw it as a symbol of growth, describing it as 'a plant in which both the roots and the flowers are visible – it follows that good roots and good nourishment are the necessary prerequisites for the sturdy plant and the good flower – interpreting the roots as the ideals and the best traditions of the past generations – which in turn reminds us of our indebtedness to the past and the flowers as our special ways and methods for achieving our aims for our own day and generation.'

## The Box Hill School Rocket A familiar symbol through the ages



What of the Flag pole? Today the flag flies from a metal pole but the story surrounding the original flag pole is quirky in true Box Hill School style! Some of you might remember George Burt the school's first caretaker. There are many tales about George, apocryphal and otherwise which describe his enormous strength. Told during his lifetime as well as after his death they amount almost to folklore. But one flag-related story is that at the time of the Coronation of the Queen in 1953, the village of Mickleham decided, at quite short notice, to celebrate by holding a pageant on what is now the school's playing fields. Many local residents had recently finished building the Pavilion, which is now owned by the school, but for the great occasion a flag pole was also needed. On the day before the Coronation, George was commissioned to produce a flag pole, painted white and with a Union Jack flying from the masthead, by first light the next day.

Nobody knows how George managed it, or where the tree came from (rumour has it that a tall pine was missing from Norbury Park about that time!) but sure enough as the sun rose on the great day there was a straight pole erected by the Pavilion, thirty-five feet high, painted white, the paint still sticky and wet – with the Union Jack flying from the top, and no sign of George anywhere. Headmaster Roy McComish wrote that 'the enormity of the task can be seen by us any day by taking a look at this flag-pole which nowadays stands outside our main building and from which flies the School flag. To lower this for annual maintenance purposes usually engages the full energies and concentration of at least four but preferably six men, or senior boys.'

We are proud of our school flag and the Box Hill School 'Rocket' and hope you found it interesting to find out more about its history and significance.

Samantha Bushell



## The Brigitte Trust – Volunteer 2018

It seems that nowadays so many people are touched by cancer - a family member, friend or business colleague. It can be a wearying and lonely time and sometimes difficult to share the many feelings and fears a serious diagnosis brings.

Brigitte Trust volunteers offer support for people facing any life-threatening condition when it's increasingly hard to cope. We are looking for volunteers now to visit local people in their own homes. Weekly visits build relationships at a time when routines are often dictated by medical needs.

Sitting and listening can be the most valuable help of all. Sign up for our 22<sup>nd</sup> February or 15<sup>th</sup> March volunteer 'taster session' to find out how you can become a Brigitte Trust volunteer in 2018. Call 01306 881816 and visit <http://www.brigitte-trust.org/volunteering/> to watch our video.



**TONY WINCH**  
**CARPENTER, JOINER**  
**& CABINET MAKER**  
[www.tonywinch.com](http://www.tonywinch.com)  
**01306 742373**  
**07969 016 924**

**Shakespeare Electricals**  
 Your local electrician



**Fully qualified and insured**




**10% off labour costs with this advert**  
**Call Matthew on 07783 553880**  
[www.shakespeare-electricals.co.uk](http://www.shakespeare-electricals.co.uk)

**Get IT Fixed, Get IT Connected**  
 Expert Repair & Maintenance



Brockham based. No call out charges. Fully transparent quotations with no hidden costs. We make technology work for you.

Call us now on **01737 845980** ChalkHill Systems  
[www.chalkhillsystems.co.uk](http://www.chalkhillsystems.co.uk)

**Building Plans**  
 For home improvements & extensions  
 Including planning & building regulations  
 Fast efficient service at competitive rates

**MICHAEL LLOYD** CEng MICE MINT  
 For free consultation:  
 Phone: 01483 205479 or 07958 791 402  
 Email: [michael@lloydplanning.london](mailto:michael@lloydplanning.london)

**R A BUTLER**  
 INTERIOR AND EXTERIOR  
**PAINTING & DECORATING**  
 OVER 30 YEARS' EXPERIENCE



**BUILDING REPAIRS UNDERTAKEN**  
 PATIOS DECKING ETC NO JOB TOO SMALL

LOCAL REFERENCES IF NEEDED  
**01372 372586 / 07776 256131**

**OSTEOPATH**  
**NICK WOOLLEY**  
 BSc (Hons) Ost  
 Osteopathy for all ages  
 Also offering Cranial Osteopathy and Myofascial Acupuncture needling treatments

For advice or an appointment  
**01372 379270**  
[www.Headleyosteo.com](http://www.Headleyosteo.com)



**GARDENING**  
 Free quotations  
 Contact Robin 07740 308 490 [contourgardening@outlook.com](mailto:contourgardening@outlook.com)  
[www.contourgardening.com](http://www.contourgardening.com)

**SERVICES**

- Gardening Maintenance —
- Hedge Trimming Specialists —
- Garden Design —
- Fencing —
- Patio Construction —



Seemingly in the blink of an eye we find ourselves at the start of a new year. It seems appropriate that January was named after Janus, the Roman god of gateways and had two heads so he could look in both directions, back at the old year and forward towards the new year, at the same time.

Starting off by looking back, we had a fantastic December at St Michael's and the excitement of Christmas that emanates from the children is always infectious. A nursery definitely is not the place to work if you are not a fan of Christmas. We had lots of fun making our own sleigh and delivering pretend presents as you can see in the photo.

The Christmas fair was a great success. A lot of hard work goes on well in advance of the fair and I would like to thank our Chair, Amy Rieley, and the Nursery Committee for all their support and input. Father Christmas always arrives at the fair in style and this time was no exception, turning up in a sleek convertible thanks to our very own Bev. As well as the chance to meet Father

Christmas and plenty of traditional fun and games, the fair is our most important fund raising event of the year. With more than £2,000 raised, we are grateful to everyone who supported us.

Soon after the fair, we had our annual Christmas nativity which this year was 'Whoops-a-Daisy Angel'. The play tells the story of a disorganised but lovable angel who is chosen to show the way to Bethlehem. For one morning only Mickleham village hall was transformed into the home of not only Whoops-a-Daisy, but a whole array of angels, snowflakes, shepherds, wise men, Mary and Joseph and a donkey! The nativity is always hugely popular with parents, grandparents and carers – and of course the children – and this year was no exception.

We also used the occasion to hold a naming competition for our new chickens and I am delighted to announce that joining Chestnut are Elsa, Heihei, Henny Penny and Freda.

Looking forward to the upcoming year and the start of the Spring term we will be using the Owl Babies story as a theme for our learning, and are looking forward to discovering the contents of an owl pellet!

In 2018 one of our fund raising goals is the replacement of the astro turf in our garden area. It has served us well but is now showing signs of age and use and we are hoping to replace it as soon as we have the funds in place.

Wishing you all a happy and prosperous 2018 on behalf of St Michael's Community Nursery. Debbie Turner



**Win a two-night stay at FSC Juniper Hall**

St Michael's Community Nursery are holding a sealed bid auction to win a family break for two adults and two children worth £240.

The prize includes full bed and board and family activities including orienteering, shelter building, wild art and nature walks. The break must be taken during August 2018 (dates subject to availability).

To enter, email [stmichaelsnursery@btinternet.com](mailto:stmichaelsnursery@btinternet.com) stating your bid. All bids must be submitted by 28<sup>th</sup> February 2018.

For more information on Real Family Holidays at Juniper Hall, visit [www.real-family-holidays.org/locations/surrey](http://www.real-family-holidays.org/locations/surrey)







## Mickleham Village Hall Dell Close

Weekdays 9.15 a.m. - 12.15 p.m. (term time)

WITH OPTIONAL LUNCH CLUB

On Mondays and Thursdays there is the option for children to stay until 2.45 p.m.

Maximum 26 children per session

• playing naturally • learning naturally

We offer an excellent range of pre-school activities for 2½ to 5 year-olds where they can learn through play in an informal friendly atmosphere.

Contact us for more information about admissions

01372 361021 [www.stmichaelscommunitynursery.co.uk](http://www.stmichaelscommunitynursery.co.uk)



## St Michael's Youth Group

School years 7-9 for 11-to 14-year-olds

Fortnightly meetings changed to  
special one-off events

**Bowling at the Guildford  
Spectrum**

**Friday 23rd February**

parents welcome

For more information contact Jonathan Blake 0778 7126 966

## Tuesday Toddles

A new friendly group in Mickleham for kids aged 0-5 years to play along side their Childminder or Registered Nanny  
Mickleham Village Hall

Every Tuesday Term time only 9.30 -11.30 a.m.

For more information please contact:

Natalie 07790 318 653 or ask to join our closed Facebook group for Tuesday Toddles for regular updates.

Next term for Bugs: See website

Mondays: 11am and 1.30 pm  
Tuesdays: 10am 11am and 1.30pm  
Session length: 45 minutes  
For more info or to register contact:  
[learningboxhill@nationaltrust.org.uk](mailto:learningboxhill@nationaltrust.org.uk)



## The Village Archive is looking for a new home

If you have a ground floor room with separate access, please get in touch with Mickleham & Westhumble Local History Group Chairman, Ben Tatham on 01306 882547 / [Ben@thetathams.co.uk](mailto:Ben@thetathams.co.uk)



**BRAIN TEASER answer:** To infinity and beyond

## Fundraising at St Michael's

We had a fabulous November and December getting into the festive spirit by making Christmas biscuits and decorations, writing Santa letters as well as many arts and crafts and Christmas cards too. We had a special tree decorating assembly in the hall where each child came up to the tree to add their decoration while we sang Christmas classics. However we also spent time thinking of others. Here at St Michael's we do a great deal of fundraising for causes which are important to us. Here are some examples of the fundraising we have done so far this academic year!

### CHILDREN IN NEED

Our very own St Michael's got the X factor!

BBC Children in Need is the BBC's official UK charity for which we raised a huge £503 here at St Michael's. The money raised is used for grants to projects that improve the lives of disadvantaged children and young people across the UK. Children in need are currently supporting 2,400 projects all across the UK. There are thousands of children living with poverty, abuse and disability and we wanted to make a difference towards changing that.

The BBC Children in Need Appeal Night takes place every year in November, so we decided to create our own show as a form of fundraising. We called our show 'St Michael's got the X factor!' Each class

put together a dance and song and even the staff got involved to perform a cowboy-themed dance. We sold tickets and performed to our parents and local community members. The children very much enjoyed it and so did the staff and parents, it was a great success!

### OPERATION CHRISTMAS CHILD

A big thank you for all of the donations of shoe boxes for 'Operation Christmas child'. We had 24 boxes all together which will make a great difference. The mission of Operation Christmas Child is to show God's love in a tangible way to needy children around the world and together with the local church worldwide, to share the good news of Jesus Christ. Since 1990, more than 146 million children in over 150 countries have experienced God's love through the power of simple shoebox gifts from Operation Christmas Child.

### OUR ADVENT CHARITY TREE

Our advent charity this year is to support a little Indian girl called Ilakiya, she lives in Devakottai, South India. We have raised more than £100 so far and will continue to raise money throughout the year. With our support Ilakiya will be able to attend the school at Katherine's Mercy Home for another year. She is a Hindu Dalit girl and her family are very poor and without our funding Ilakiya would sadly be unable to go to school. We asked the children to earn some



**St Michael's  
School**

[www.stmichaels-dorking.surrey.sch.uk](http://www.stmichaels-dorking.surrey.sch.uk)

pennies to help Ilakiya by doing some jobs at home. Some of them tidied their bedrooms, made their beds or stacked the dishwasher. The children then brought in their earnings and put them in our Advent calendar. We also raised extra money through collections at our Christmas play. If anyone would like to donate any further to this cause we would love to hear from you.

We very much enjoyed our Christmas production. We were delighted to see so many parents, carers, grandparents, neighbours and community friends joining us! Year 2 told the Christmas story in Church on the last day of term, written in their own words, followed by tea and mince pies. A good end to the term and now looking forward to a busy Spring term.

The St Michael's Teaching Team

**PS** This year's Nativity Play was delightful and certainly reflected Sandra Peers' music and drama background. The children were enthusiastic and confident, and the singing was terrific. Well done to all. Sue Tatham

Photograph: Ben Tatham



Just installed – new markings painted on the school playground include road tracks, footprints, snakes and ladders, a phonics pond and much more.



# Cryptic Crossword



## Across

- 9/33 Favourite breakfast of 13D is trout 'n' bats' nuts (5,5)  
10 Network not working – get in touch with the Queen (i.e. the person who is responsible for the upkeep of the property) (9)  
11 Out, out! 4 in disarray (7)  
12 Ask questions once a minute, less up tempo for starters (7)  
13 'Strong and stable' – mad dragon's net loss leads to an unexpected clamour (5)  
15 This food sounds like it's how far it is around over how far it is across (3)  
16 Even astute woman married to 13D (3)  
17 Horse needs artificial intelligence to rebuild again (3)  
19 Jump with jump lead? No, Bill! (7)  
20 Angry to lose this card game (don't start!) (3)  
23 A sign of Churchill is to have endless brandies inside (3)  
24 They had tiger feet – a cause of mess on the carpet (3)  
25 Endless magic in Cambridge College (5)  
27 Unusual arbiter of good taste (7)  
29 Garbage trailer pulled back by this? (7)  
32 Cor! Sexier turbulent priest (9)  
33 See 9

## Down

- 1 Help Lincoln: top Trump! (4)  
2 Bonkers amateur bridge player has gone missing - it's a shock (6)  
3 Late returns for 'Alien Gore' and the rest (2,2)  
4 Comes last with light winter vehicle (4)  
5 In council elections 13D was never nude and effete (but so mixed up that even Fern left) (10)  
6 See 29  
7 Organise Mr Brunel, ship-builder (8)  
8 Olive and Beryl are politicians (6)  
13 MBE, school 18, a man mountain! (subject of an article in this magazine) (3)  
14 Try smack sample (5)

- 15 Matter-of-fact approach to AGM (armpits all over the place!) (10)  
16 Taste a kumquat or a freshly cut piece of meat (5)  
18 Rev. R Goon, silly man in charge (8)  
21 Flatulence comes after mustard (3)  
22 Goodie! Donkey music is back! (6)  
26 Hundred is up with dab over point – pointless but OK (3,3)  
28 Cured pig on for potassium transplant support (4)  
29/6 A robot minced over with artist to Osama's hideout (4,4)  
30 Self driving car? (4)  
31 Speed ends in car fascia against tree (4)

## SOLUTION TO THE DECEMBER CROSSWORD

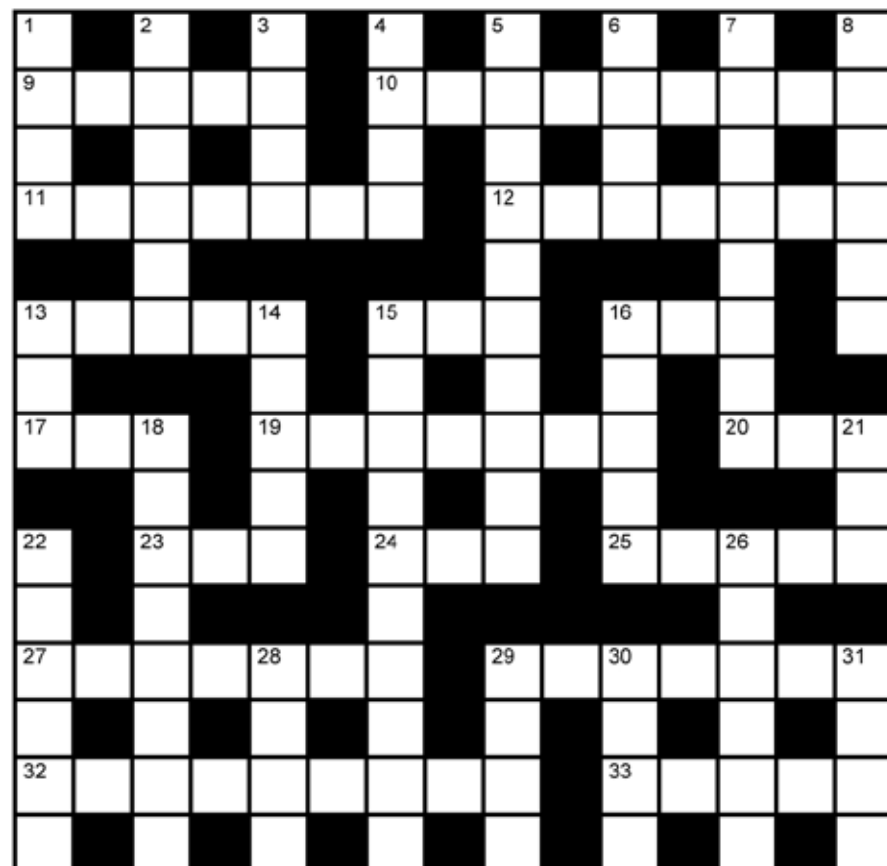
Across: 1 Greetings 6 Vowed 9 Excel 10 Peeresses 11 Dance music 12 Cell 14 Scrooge 15 Groucho 17 Bickers 19 Sprouts 20 Yawn 22 Ceremonies 25 Titfortat 26 Stoic 27/28 Merry Christmas.

Down: 1 Greed 2 Eccentric 3 Talked over 4 Neptune 5 Stewing 6 View 7 Waste 8 Disallows 13 Poorhouses 14 Subsystem 16 Cruciform 18 Sceptic 19 Sweater 21 Water 23 Socks 24 Rosy.

Andrew Tatham



Part of RHS Wisley's magical Christmas Glow illuminations in December



Neil A Mason  
Established 1976



## All electrical & plumbing work undertaken

Inspections and Testing  
Extra Points Rewiring etc  
Security and Emergency Lighting  
Temporary Power and Lighting Hire  
Public Address and Sound Systems  
Installed or For Hire  
Complete Bathroom and  
Fitted Kitchen Installation

**WESTHUMBLE**

Telephone: 01306 889073

## DAVID TOBITT CARPETS

### FINE CARPETS SUPPLIED AND FITTED

*We have over 30 years' experience working in Dorking and the local area*

A comprehensive range of carpets available

We can bring samples to your home

Advice given on all types of carpet work



**WE TAKE A PRIDE IN WHAT WE DO**

**01306 885032**

[www.davidtobittcarpets.co.uk](http://www.davidtobittcarpets.co.uk)

INSPIRATIONAL  
**Box Hill School**  
for girls and boys aged 11-18



**At Box Hill School we don't just teach...**  
we work hard to prepare our young people for life beyond education by creating experiences that promote **courage, generosity, imagination, principle and resolution.**  
Let life's great adventure continue at Box Hill School.

Telephone: **01372 373382**  
or email [admissions@boxhillschool.com](mailto:admissions@boxhillschool.com)  
**[www.boxhillschool.com](http://www.boxhillschool.com)**

## MARTIN BURGESS LANDSCAPE AND GARDEN DESIGN



CONSULTATION SERVICE FOR  
GARDEN PLANNING PLANTING  
AND MAINTENANCE

01737 842289 / 07966 183395

## HART SCALES & HODGES SOLICITORS

*We have been serving the Dorking community since 1782 and are proud to support our local parishes*

Our services include:

- Buying and selling your home
- Extending your lease
- Commercial property
- Inheritance Tax planning
- Care fees and Asset protection planning
- Setting up a trust
- Wills and Probate
- Lasting Powers of Attorney
- Divorce Separation and Children
- Employment for employer and employee
- Litigation and dispute resolution
- Business advice

Please call us on 01306 884432 for a FREE initial consultation to discuss your requirements  
[www.hartcales.co.uk](http://www.hartcales.co.uk)





6 en-suite rooms from £89 per night including breakfast

**OPEN**

Monday – Saturday: noon – 11 pm

Sunday: noon – 10.30 pm

**BREAKFAST** (open to non-residents) **SERVED**

Monday – Thursday: 7.30 – 9.30 am; Friday & Saturday: 8 – 10 am

**LUNCH & DINNER SERVED**

Monday – Thursday: noon – 3 pm & 6 – 9 pm

Friday & Saturday: noon – 3 pm & 6 – 10 pm

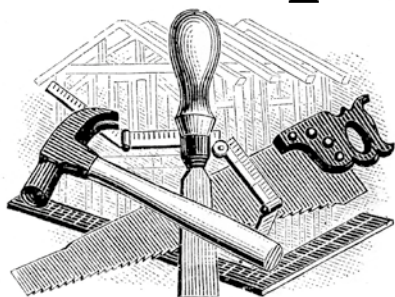
Sunday: noon – 6 pm

The Running Horses, Old London Road, Mickleham, Nr Dorking, Surrey RH5 6DU  
Call Us: 01372 372279 Email: [book@therunninghorses.co.uk](mailto:book@therunninghorses.co.uk)

# J S Wilson

Mickleham

## Carpentry & Building Services



Extensions ~ Conversions  
Refurbishments ~ Property Maintenance  
Fully guaranteed ~ Fully insured

*One call WILL solve it all*

Contact Jason on: 07761 926684 or 01372 379359  
[jswilsonconstruction@gmail.com](mailto:jswilsonconstruction@gmail.com)



**RB FENCING**

RESIDENTIAL • COMMERCIAL  
AGRICULTURAL • SCHOOLS • ACOUSTIC  
HOARDING • GATES • SECURITY

RICHARDSON & BRADS FENCING LTD  
**T: 01306 640 143 - 01483 414 74**  
E: [INFO@RBFENCINGLTD.CO.UK](mailto:INFO@RBFENCINGLTD.CO.UK)  
W: [WWW.RBFENCINGLTD.CO.UK](http://WWW.RBFENCINGLTD.CO.UK)  
A: 83 SOUTH STREET, DORKING, SURREY, RH4 2JU  
UNIT 45 MARTLANDS INDUSTRIAL ESTATE, SMARTS HEATH LANE, MAYFORD, GU22 0RQ

# John Wadsworth

INDEPENDENT ESTATE AGENTS



CALL NOW FOR YOUR FREE VALUATION

**01372 450500**

[www.johnwadsworth.co.uk](http://www.johnwadsworth.co.uk) [sales@johnwadsworth.co.uk](mailto:sales@johnwadsworth.co.uk)

*A professional efficient and friendly service*