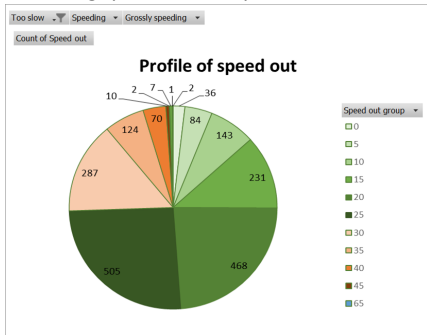
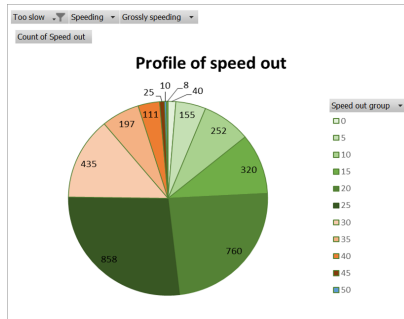


Looking at the Wotton Rd numbers, there is not much effect:

Flashing (w/c 5 June)



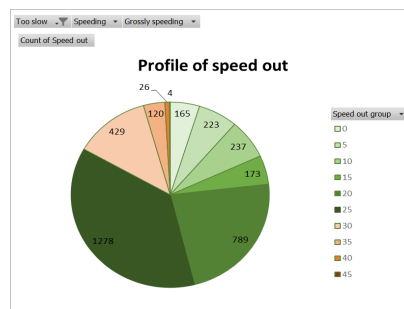
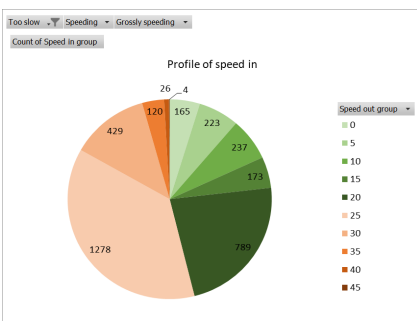
vs No Warnings (w/c 11/6)



However the traffic volumes are substantially different because of the roadworks. I suspect it is the “out of town” drivers who speed, rather than the residents, so the values for w/c 5 June may be artificially skewed (1,763 movements in w/c 5/6 versus 2,448 for w/c 11/6)

We may well find the same when we come to compare the different weeks for East Farm, given the roadworks going on down the hill.

Looking at East Farm (Live Flashing) from last week Speed in (when first detected): Speed out (when detection ends):



I'm more interested in comparing the speed outs for flashing versus covert, though as I said above, the roadworks may skew things.

(Peter Johnson)