

The background of the entire page is a photograph of a sunset sky in shades of orange and yellow. Numerous birds are captured in flight, scattered across the sky. In the lower half of the image, the dark silhouette of a tree with sparse leaves is visible against the bright sky.

The Kingsclere Tower

What's On & Local News

APRIL 2026

T The Kingsclere Tower

EDITORIAL TEAM: Mike Stokoe, Stephen Steare, Steven Gaines, Cathy Williams
 ADVERTISING: Brian Elborn b.elborn345@btinternet.com tel 298704
 DISTRIBUTION: Brian Elborn tel 298704
 ASSEMBLY: Andrew Kitch tel 299743
 PRINTERS: Kingsclere Design and Print
 COVER: Jackdaws v Kite *Cathy Williams*

Happy Easter from all the Tower team

On Sunday 29th March we gain lighter evenings as the clocks go forward. That, plus warmer weather, should provide more opportunities to get out and about after a very soggy start of the year.

Our village clubs offer opportunities to take up walking rugby, tennis and lawn bowls, whilst local runners may be interested in signing up for one of the Hampshire Hoppit Trail Races in June (see page 7). For our young people booking is now open for swimming lessons at the Primary School in June and July (page 22). Finally, why not celebrate the joys of spring visiting the Gardening Association's Spring Bulb & Flower Show on April 5th (page 15)?

Make the most of living in our wonderful village and beautiful surrounding countryside.

The Editor

Neither the Editors nor the Management Committee accept responsibility for the opinions expressed or the goods and services advertised in the Kingsclere Tower magazine. The Editors reserve the right to omit, amend, or condense any item submitted for publication.

To all "Tower" Contributors

**Copy for May 2026 to the Editor at: kingscleretower@gmail.com
 NOT LATER THAN 12th April 2026.**

If possible please submit articles as a MS Word document, A5 page size, font Times New Roman 11, single spacing. *If email not possible, post to:*
 23 Swan Street, Kingsclere, Newbury RG20 5PP.

**Will ALL contributors please include full name
 and contact phone number/email address.**

Kingsclere Parish Council

Email: clerk@kingsclere-pc.gov.uk

Telephone: 07787 041829

Office: 37 George St, Kingsclere RG20 5NH

Website: <https://www.kingsclere-pc.org.uk/>



ANNUAL PARISH MEETING and MAKING A DIFFERENCE AWARDS

Presentations took place on Monday 16th March in the Village Club.

Congratulations to Anne Buckingham, Benjamin Esprit, Helen Andrew, Ian Bowes, Louise Porton, Mike Leah, Rahil Butt, Ray Peach, and Sarah Davis. We thank them for their outstanding service to the village.



L-R: Rahil Butt, Mike Leah, Sarah Davis, Anne Buckingham, Louise Porton, Benjamin Esprit, Ian Bowes and Clive Musset Council Chairman.

COUNCILLOR VACANCIES – Do you love living in Kingsclere? Do you want to help shape its future? We are looking for **three new Councillors** to join our team. As a Parish Councillor, you will:

- Represent the views of all residents & represent the community externally
- Understand the needs of different community groups
- Stay well-informed about local issues
- Help deliver services that meet local needs and improve quality of life
- Attend council meetings & monitor and maintain village finances
- Review planning applications from a community perspective

If you're passionate about making a positive difference, we'd love to hear from you.

GREEN WHEELY BINS & GLASS RECYCLING – The collection dates are Wednesday 15th and 29th April and 13th May.

NEXT PARISH COUNCIL MEETING – The next Full Council Meeting is scheduled for **7:30pm on Monday 27th April**. We welcome the attendance of all parishioners at our meetings and anyone who wishes to raise any matter will be given the opportunity to do so during Public Questions.



Covid Spring Booster Update: Vaccinations will be offered from 13th April to 30th June for adults aged 75 and over, residents in care homes for older people and immunosuppressed patients. We have a Covid clinic on Saturday 25th April, but it has limited capacity. Patients are also able to call 119 between 7th April and 29th June to book appointments at a range of community pharmacies.

A Smarter, Faster Way to Reach Your GP: Over the next few months, we will be introducing a new way for you to access our medical centre: GP Triage. This simple online tool will help you get the right care more quickly guiding you through a short set of questions about your symptoms or request. It is designed to make contacting us easier, reduce waiting times, and ensure your query reaches the right clinician or service straight away. Instead of waiting on the phone or trying to find the right appointment type, you will be able to submit your request online via our website. The system reviews the information you provide and directs it to the most appropriate member of our team. This means faster responses, fewer delays, and a smoother experience for everyone. Whether you need medical advice, a prescription, or help with an administrative query, GP Triage will help us manage demand more efficiently. Your health and privacy remain our top priority. The triage system will not replace our clinicians, instead it will free up more appointments with them. Every request will be reviewed by a trained professional, and the information you share will be handled securely. By using GP Triage, you will help to reduce phone congestion and improve the overall quality of care we can offer. A further update will be provided when the new system goes live.

Help with NHS App: The PPG will be offering support at a drop-in clinic for those who need help with the NHS App at the Overton surgery on Tuesday, 21st April from 9 – 11am.

For help with transport to medical appointments, see Volunteer Centre West Berkshire advert on page 9



The Kingsclere Cancer Research Coffee Morning Saturday 9th May 2026 10:30 am - 12 noon, Kingsclere Village Club

All welcome, no need to book. See and add names to the live Map of Hope up on the big screen; buy raffle tickets; catch up with neighbours and friends; and cross fingers for sunshine so we can expand into the garden!

Donations for CRUK gratefully received. Cash is a good plan; alternatively donations can be made to our Giving page via QR code (provided on tables).

If you are able to help set up, pack down, serve, and generally make sure everyone's having a nice time, we'd love some more hands on deck. Please call or WhatsApp Claire on **07919 894795**.

The Kingsclere Cancer Research Odyssey Ball Friday 4th September 2026 6pm - 12 midnight, Oakley Hall Hotel

Over a third of tickets have now been sold - get yours soon to avoid missing out. Aldermaston Coach Lines will once again provide transport to and from the venue for those coming from Kingsclere and Ashford Hill, and are generously sponsoring the event in the process.

It's tough out there this year, and we truly rely on the kindness of other people to make this biennial event a success. If anyone reading can offer goods or services - anything at all that might be valuable to someone out there - we'll auction it off and siphon those funds directly to the Southampton Clinical Trials Unit via CRUK. Likewise if any businesses are interested in seeing their charitable allowance directly fund our local clinical trials unit - which is at the forefront of advancement in research and better outcomes for cancer patients nationally and internationally - we'd really love to hear from you.

Beccy, Claire, Mandy and Sean

Prize donation, sponsorship and ball tickets:

<https://kingsclerecrf.org.uk/>

Email: admin@kingsclereCRF.org.uk

Call Sean: **07787 527326**



From Diane Tait:

My heartfelt thanks for all the good wishes, cards, gifts, flowers and good company from this lovely community in celebration of my 90th birthday.



The Fieldgate Centre is run by Kingsclere Community Association, as a charity (No 1168366). The association is made up of volunteers who rely on the support and participation of the community.

The spring flowers are arriving and The Fieldgate Centre continues to be busy and bustling with its full diary of classes, clubs and activities. Check our website for full details and come and join us for Pilates, Clubbercise, Ceroc, Slimming World, Kingsclere Singers, Badminton, Darts and Monthly Meet Up.

Monthly Meet Up is taking place on **Tuesday 21st April** from **2.30 - 4.30pm**. The afternoon is always lovely with homemade cake, quizzes, crafts and chatter. Everyone is welcome so do come along.

Rehearsals are already well under way for the next Kingsclere Players Show: **The Show Must Go On - a Musical Revue** which is taking place on **15th - 17th May**. For more details see their advert on Page 17.

Looking ahead, save the date **20th June** for the **Music Festival**. Plenty of musical acts, food vendors, bouncy castle and stalls for fun will be present. It's going to be a great day so don't miss out! Full details to follow.

Plans and preparations are in place for this year's **Summer of Fun**. Always very popular, this year we are limited to five Wednesdays instead of the usual six, due to the way the school holidays fall, but they will all be fun filled and action packed. The dates for these brilliant days are **29th July** and **5th, 12th, 19th and 26th August**.

Finally, should you wish to book the MUGA or the sports pitches, this needs to be organised through Basingstoke and Deane via their website. Any booking requests, or complaints and comments also need to be directed to them. The Fieldgate Centre are not responsible for the sports pitches and are unable to take these bookings. We are aware this causes confusion so hope this clarifies the situation.

Please contact the office if you need more information on any events, or would like to make a booking.

**email: fieldgatecentre@outlook.com
www.thefieldgatecentre.co.uk**

**telephone 01635 298497
Facebook**

Kingsclere Bowls Club

Kingsclere bowls club yet again performed outstandingly this winter playing in local indoor leagues. April sees the start of the outdoor bowls season, and we open our well maintained green for practice this month.

We are always looking for new members and currently have 20+ vacancies. Whether you are new to bowls or an established bowler we are pleased to invite you to visit, have a look round and enjoy FREE Taster/Coaching sessions every Thursday evening in May. All equipment is provided, just bring flat soled shoes. We have full disabled facilities, free parking, bar and great social events. Being outdoors, you can play bowls in all weathers.

Why join Kingsclere bowls club?

- We offer year-round bowling for all abilities, from complete beginners to experienced league players
- Friendly roll-ups every week during the summer outdoor season
- League competitions run in local indoor bowls clubs in the winter
- Club leagues, competitions and social events
- Coaching for new and returning bowlers
- Delivery basics, line & length
- Shot selection and tactics
- Team play and communication
- Competition preparation

Social nights are a great way to meet members, bring friends along, and help support the club. Why not give us a call and have a chat about what we can offer you or pop into the clubhouse. For more details call Steve Kendrew **07929 876831** or Nina Horner **07421 503378**.

Kingsclere Tennis Club

Wake up Tennis Players! It's time to get your racquets out of the cupboard and take yourselves down to the courts. It will soon be spring and our membership year starts on 1st May.



We are starting the season with a **Free Membership Monday on the 27th April** when everyone can come along, members or not, good players and learners, and see how friendly we can be. All are welcome and there will be refreshments available.



Let's make 2026 a good one for making lots of new friends!

Kingsclere Rugby Club



Training: Wednesday's 7 – 9 pm

Walking Rugby: Wednesdays Mixed 7 – 8 pm,
Thursdays Ladies 7 – 8 pm.

Fixtures and Results

14th February Bognor 2nd's: Loss 14 – 16. Player of the Match was Roger Hobby.

28th February Sandown & Shanklin: Loss 22 - 41. Player of the Match was Connor Thompson.

7th March Farnham 4th's: Won 52 – 15. Players of the Match were Ollie Harris and Oscar Harris.

11th April New Milton 2nd's - League Home 3pm

18th April Tadley Bandits - Friendly Home 3pm

24th April Tadley Bandits - Friendly Away 7pm

2nd May Charity 10's Tournament/Walking Rugby – Home 11am – 6pm

For more information, please contact:

Joanna Reed – Moreton **Secretary-Kingsclererfc@outlook.com** or Geoff Curtis **Youth-coach-Kingsclererfc@outlook.com**

For more information please visit our Facebook and Instagram pages.

Please remember, dogs are not allowed on the sports pitches

The HAMPSHIRE Hoppit Trail Races

Sunday 14th June 2026



Join us for our 11th year, a super-friendly local race with a choice of three distances:

Marathon (9am start)

Half Marathon (10:30am start)

10K (11am start)

The races start from the field at the top of White Hill (B3051) close to Watership Down and use beautiful trail routes along the Wayfarers Walk and Harrow Way. The routes are well marked and marshalled and have frequent drink and feed stations.

The event is held under UK Athletics rules.

Every finisher receives a goody bag, a keepsake beer glass, a pair of quality trail socks, and a fabulous medal.

For more details and to enter, visit <https://hampshiretrailmarathon.co.uk/>

Kingsclere & Headley Woodlands W.I.

Kingsclere Village Club, 35 George Street



It is with much sadness that I announce the suspension of Kingsclere WI forthwith as we have been unable to find a new President following my stepping down from that position. We had a fantastic meeting on 11th March with our speaker Richard Anderson being his usual excellent self. He told us the story of Wallace Simpson from birth to death with all the ramifications of her life. What a way to finish. At our meeting we decided to donate the proceeds of our monthly competition equally to St. Michael's Hospice and the charity that Richard supports and for which he has raised over £100,000. We also decided to make a donation of £250 to the Village Club to help with the maintenance of the building.

We will be going to lunch for a final time as members of the Kingsclere WI to the Two Watermills on the 25th March. We will also meet up for tea/coffee and maybe cake in a suitable venue; a coffee shop or garden centre visit is always enjoyable. Our treasurer, secretary and committee have been amazing in supporting my role as president and I thank them profoundly, as I do all the wonderful ladies who came to our meetings. I wish them all the very best for the future.

Margaret Geary, Retiring President tel 01635 297197



QUIZ EVENING

Our quiz has been written by members of the Weasels Armpits Quiz Team!

Hot drinks will be available on the night, together with cake for an additional donation. If you would prefer bring nibbles and non-alcoholic drinks, we can provide the glasses.

Saturday 11 April 2026
at 7.00 p.m.
Kingsclere Methodist Church
Entry: £5.00 per person

TEAMS OF UP TO 6 OR JUST COME ALONG ON THE NIGHT AND MAKE UP A TEAM.

Please contact Hazel (hazelrobbie321@gmail.com) before Tuesday, March 31st 2026 to book places.

Kingsclere Community Library

Your local Community Library is a wonderful place!

We have recently bought a selection of new children's books and have also collected the latest 100 borrowed books from Tadley Library, so there really is something for everybody. As well as a selection of fiction, non-fiction, large print and children's books, you can also borrow jigsaw puzzles, use free WiFi, use the public computer and use our WHICH subscription to research virtually anything. And it's all FREE. You can also make photocopies for a small charge, so pay us a visit, sign up, borrow some books or volunteer to help keep the doors open.

In addition, we will also be running a "monthly theme" throughout the year where we will be putting books on display relating to that theme. April's theme will be "Healthy Cooking/Eating" (not April Fools as previously advertised) so come in and have a look.

Change of Hours: Our new opening hours on **Thursdays** are now from **10.30 am to 4.30 pm** for a three-month trial period.

HOURS

Tuesday	1.00pm - 5.30pm
Thursday	10.30am - 4.30pm
Saturday	10.00am - 1.00pm

Nicki Lee, kingsclerelibrary@gmail.com www.kingsclerelibrary.co.uk
Library phone number: 01635 297464



Residents of Kingsclere

**ARE YOU HAVING DIFFICULTY GETTING TO MEDICAL APPOINTMENTS?
OR
NEED MINIBUS TRANSPORT FOR YOUR LOCAL COMMUNITY GROUP?**

VOLUNTEER CENTRE WEST BERKS IS PLEASED TO ANNOUNCE WE CAN NOW OFFER THESE SERVICES IN KINGSCLERE.

PLEASE CALL 01635 49004
10AM-1PM MON - FRI
FOR FULL INFORMATION





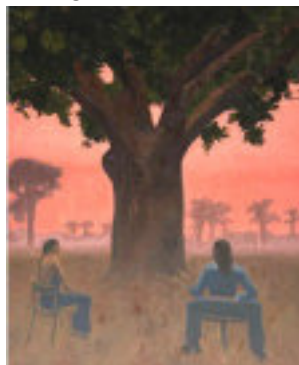



Easter Events at Sandham Memorial Chapel

Harts Lane, Burghclere RG20 9JT

Daily Quests Exhibition

We are delighted to offer our visitors from the **5th March until the 3rd May** the chance to view Daily Quests exhibition by Hampshire artist Ed Saye. It brings together a new body of work created in response to Sir Stanley Spencer's epic paintings inside the chapel. Saye's paintings enter into a quiet, speculative dialogue with one of the most extraordinary works of British art of the 20th century. Spencer's response to war was so defiantly unwarlike. Not battles, but floors being scrubbed, beds being made, bread eaten. Intimate, bodily, repetitive; profound in their commonplace. Saye wondered if he could follow that logic; painting his present, not as spectacle, but as the observance of the routine and ordinary. Spencer's paintings transform memory into something devotional and immersive. Saye's paintings similarly unfold as a loose, autobiographical cycle, populated by recurring male figures, avatars of the artist himself, who drift through surreal, dusky landscapes suffused with otherworldly glow. His paintings are full of middle aged men like him playing golf, mowing lawns or eating a meal with the family. They are sometimes pensive, sometimes radiant, sometimes both. There's not much happening, except maybe the low key drama of just being.



Solitary Tree 2, Ed Saye

Easter Sunday 5th April – Poetry and Painting

Join us for a deep dive with a Chapel Steward into the Resurrection of the Soldiers, a monumental 18 foot high scene depicting soldiers rising from the dead, clutching white crosses and handing them to Christ. This followed by a short performance of First World War poetry.

Open Thursday – Sunday and Bank Holiday Mondays 11am to 3pm

Adult £12, child (5-17) £6.60, Family (2 adults, up to 3 children) £30
Entry free including Ed Saye exhibition with National Trust Membership
email: sandham@nationaltrust.org.uk or call **01635 278394**

The Church Pages



Hi,

You don't have to search too hard to find bad news; pretty much any news outlet today has stories of conflict, corruption, natural disasters, exploitation or prejudice. These are worrying times for many people, and that's just from things happening "out there". We nearly all have troubles enough at home – sickness or bereavement, the cost of living, strained relationships; the list goes on! All this means anxiety is on the rise as people struggle to find peace in the storms.

As a Christian, I have a relationship with God; I talk to Him (what we call prayer), worship Him, and create space to be able to hear from Him, and so I'm able to lay my anxieties at His door and receive His love & peace in return. This relationship is available to everyone. Jesus won't ever force Himself upon us, but He is standing with an invitation for everyone to receive. He says, "Come to Me, all you who are weary and burdened, and I will give you rest." That's the essence of Easter. "For God so loved the world that He sent His only Son", to pay the price (the penalty notice) that the things we get wrong (our sins) demand, so that we're able to draw close to a Holy God and come into His Presence.

This is the Good News of Jesus. We can't earn it and don't deserve it, but Jesus made a way for us to "boldly approach the throne of grace" and step into this wonderful relationship with the creator of the universe. All we have to do is turn. That's what the word "repent" means – to turn. Turn *from* the things that are wrong in our lives, and turn *to* Jesus.

This time last year, I was in the midst of my own storm, with the death of my father. There was a particular worship album that I had on almost perpetual repeat on Spotify through that time "Chapter 2: Land of Revival" (it's brilliant – check it out!), from Chroma Church in Leicester, a church we visit pretty often. There's a line of a particular track called "Your Presence" that says, "where you are is where my heart has found peace". This really spoke to me, so I was really intentional to make time each day to be where God is – to be in His Presence – and I did find peace. Unmistakenly. So, if you're feeling the weight of worry and anxiety, why don't you take a step towards Jesus this Easter, and trade bad news for Good News? We'll be reflecting on the death of Jesus on the cross on Good Friday at 10 am, and then celebrating His rising in Glory on Easter Sunday at 10 am.

Come. Come and receive His rest. Come and find peace for your heart.

Bless you,

Rev. Pete Williams

St Mary's Church

Worship in our Churches



April 2026

Thur 2 nd	6.30 pm Maundy Thursday Holy Communion	St Mary's, Kingsclere
Fri 3 rd	10:00 am Good Friday Reflective Service (refreshments after at Kingsclere Methodist Chapel)	St Mary's, Kingsclere
Sun 5 th	5:50 am Easter Sunday Sunrise Service 10:00 am Easter Sunday Holy Communion	White Hill St Mary's, Kingsclere
Thur 9 th	10.30am Morning Worship	St Mary's, Kingsclere
Sun 12 th	9.00am Traditional Morning Worship 10.30am Contemporary Morning Worship	St Mary's, Kingsclere St Mary's, Kingsclere
Thur 16 th	10.30am Holy Communion	St Mary's, Kingsclere
Sun 19 th	9.00am Traditional Holy Communion 10.30am Contemporary Holy Communion	St Mary's, Kingsclere St Mary's, Kingsclere
Thur 23 rd	10.30am Morning Worship	St Mary's, Kingsclere
Sun 26 th	9:00 am Traditional Morning Worship 10:30 am Contemporary Morning Worship	St Mary's, Kingsclere St Mary's, Kingsclere
Thur 30 th	10.00am Morning Worship	St Mary's, Kingsclere

www.clerewoodlands.org.uk

St Mary's Church Village Fete

Monday 30th August 2027

We're taking a little breather! We will not be holding the fete in 2026, but fear not - we are already planning to return bigger and better on the August Bank Holiday in **2027!**

Save the date for next year and thank you for your continued support!

Lighting up St Mary's

The sight of St Mary's Church when it is floodlit is truly beautiful. Many people sponsor these lights (£15 per evening) to mark an occasion, such as a birthday, wedding, anniversary, or some other special day in their lives. To book, please email administrator@stmaryskingsclere.co.uk or call **01635 299528**. To include your tribute in the Tower, please let us have your words before the 12th of the preceding month.



April

- 13th Richard, Happy Birthday, we miss you. Love Mum & Dad xx
- 15th Miss Pearl Ann Harmsworth, on what would have been her 66th birthday. "Still missing you lots xx"
- 25th Remembering Stewart Vaughan today on his 78th birthday. Missing you always but especially today. Forever in our hearts, with Love from Pam, James, Laura, Robin, William and Alex. XXXX

Saturday Coffee in the Kingsmill Room, St Mary's Church

Fresh brewed coffee, tea and delicious home-made cakes.

April 4th, 11th and 18th 10.00-12.00

If you're looking for great company,
we'd love you to join us for a cuppa and a natter!
For more info, please contact the church office on: **01635 299528**

Kingsclere Methodist Church

Services for April 2026

Fri 3 rd	10am	Joint Good Friday Service at St Marys Church (followed by refreshments at Kingsclere Methodist Church)
Sun 5 th	5.50am 10.30am	Easter sunrise service on White Hill (gallops side) Joint service at Whitchurch Methodist Church
Sun 12 th	10am	Mrs Christine Thomas
Sun 19 th	10am	Mr Peter Frank
Sun 26 th	10am	Mrs Hazel Barker

Coffee Morning every **Thursday 10.30 until 12 noon**, all are welcome.
Hall available for hire (see Directory on Page 24)

Christine Westcombe email c_westcombe@hotmail.com

Friends of St Mary's Kingsclere Ltd (FOSM)

After an unusually grey and damp winter there are at last hopeful signs that spring is now getting going, with occasional warm and sunny days and lighter evenings. We are already potting up for the **Plant Sale in St Mary's Churchyard on the morning of Saturday 30th May**, and hope to offer a good selection of flowering perennials and annuals, and young vegetable plants. This popular annual fixture is, of course, very much a combined village event, and we should be most grateful for donations of any plants you're able to spare after splitting clumps or bringing on seedlings. Please email Jane Royle jane.b.royle@gmail.com or Sarah Mussett sarah.mussett@hotmail.co.uk.

I mentioned in last month's Tower the pressing needs for major and very costly repairs to the fabric of the church, which will far exceed what FOSM can contribute. Our current membership stands at only about 150 in a community of just under 3,000 people, although we're grateful that many more of you regularly support our fundraising events. If even one in five people who aren't yet members signed up as Friends (at £10 a year for individuals, or £20 for a family) it would be a meaningful contribution towards the survival of our much-loved church at the heart of the village. Please contact us as below.

Peter Turner, Chairman

Website: friendsofstmaryskingsclere.org

For membership and other enquiries contact: fosmkingsclere@gmail.com

Kingsclere Charities - Grants

The Robert Higham Apprenticing Charity: This Charity promotes the education and training of young people aged 16 – 25 resident in The Parish of Kingsclere and Ashford Hill with Headley. Grants are awarded to assist with the cost of equipment, books and specialist clothing required for learning or training. Also expenses incurred in travelling to and from home to a place of learning. The Charity also provides benefits not normally provided by the Local Education Authority to schools in the above mentioned Parishes.

Welfare Charity: This Charity helps anyone resident in the Parish of Kingsclere and Ashford Hill with Headley regardless of age or means. Grants have been given towards mobility aids, medical equipment such as nebulisers, aids to make life easier for the sick and less mobile, and travel costs to and from hospital.

Kingsclere Charities Meeting Dates for 2026: 16th April, 18th June, 17th September and 19th November. For an application form please contact Gill Hern at Kingsclerecharities4@mail.com.

Kingsclere Royal British Legion (RBL) & Poppy Appeal



We warmly welcome new members and visitors; no prior experience is necessary just a willingness to help and a passion for supporting our veterans and the local community. At this time we are not regularly meeting on the first Tuesday of the month but hope soon to be able to meet more frequently.

For over 100 years, the Kingsclere Branch of the RBL has been at the heart of our community, supporting local veterans, organising memorial services, and organising the village Remembrance Parade and Poppy Appeal activities. Without the commitment of volunteers, we will no longer be able to carry out these services or preserve the legacy of Remembrance for future generations.

If you're interested in volunteering in any way, joining us or would like further information, please don't hesitate to get in touch with us via email at Kingsclere.Chairman@rbl.community. Thank you.

Chairman, Kingsclere Royal British Legion

Kingsclere Gardening Association



February's speaker was Sharon Chapman from the charity Growing Together. Her main interest was making us and her students aware of the need to keep some area in our gardens for insects; to grow stinging nettles enabling three varieties of butterflies to survive as they depend on the nettles, and to leave a small pile of logs in the garden to encourage pollinating insects. The winter lectures concluded in March with a talk by Carol Gubler.

43rd SPRING BULB AND FLOWER SHOW

Sunday 5th April

Village Club, 35 North Street, Kingsclere RG20 5NH
OPEN TO THE PUBLIC 2 - 4 PM

Refreshments available

Doors open from 9am for staging, judging commences at 11am

This is an open show, any member of the public may enter if they have grown, arranged flowers or cooked. Do come along and have a go. Schedules are available. Contact laura@ro-jen.co.uk for further information.

Denise Allen Chairman 01635297966 denise.allen47@icloud.com

KINGSCLERE VILLAGE CLUB

Est. 1921 CHARITY 1189234

<http://www.kingsclerevillageclub.co.uk>

<https://www.facebook.com/kingsclerevillageclub>

Follow us on Instagram @kingsclere_village_club



Community Cafe

The April Community Cafe includes a fun quiz at 11 o'clock. **Saturday 25th**, café open **10 am to 12.30 pm**. Come along to enjoy very reasonably priced homemade cakes and hot drinks, served in a welcoming atmosphere.



The May café will be on Saturday 23rd and features a table-top sale. Please contact Helen, details below, to book a table (just £5).

Spring Clean

Want to lend a hand? Join us at **10 am on Sunday 19th April** to help with our spring clean. Just turn up – you will be most welcome!

Shakespeare in the Garden – Comedy of Errors

A matinee performance by the renowned Festival Players International, on **Sunday July 5th, 2 pm** with an optional buffet lunch beforehand. Tickets £16 performance only, or £23 including buffet lunch (vegetarian & vegan catered for - please let us know of any allergies/special dietary requirements). Tickets on sale from 1st April from <https://wegottickets.com/event/693279> or Helen, details below.

Gentle Exercise

Would you or anyone you know benefit from some gentle exercise? Particularly helpful for those of limited mobility or recovering from surgery. Thursday afternoons 1.30 to 2.30 pm. Contact Emma bookings@kingsclerevillageclub.co.uk

Helen 01635 297390 or events@kingsclerevillageclub.co.uk



FOSM200 Club

The winner of the March Draw was Andrew Slater – No. 113
Congratulations, Andrew

Next month's Draw will take place at Bel & the Dragon at about 7pm on
Tuesday 7th April

The Show Must Go On – A Musical Revue

Kingsclere Players, together with Kingsclere Singers and in partnership with the Kingsclere Community Association, are delighted to present **The Show Must Go On – A Musical Revue** at the Fieldgate Centre, Kingsclere.

Join us for a lively celebration of music and theatre, featuring well-known songs from some of the most loved stage shows.

Performances will take place on:

Friday 15th May – 7:30pm

Saturday 16th May – 2:30pm & 7:30pm

Sunday 17th May – 2:30pm

Tickets are £12.50 for Adults and £7.50 for Children

For more information on performance schedules, ticket prices, and booking options, please visit our website at: <http://www.kingsclereplayersgroup.com>
Come along and enjoy a wonderful evening of music, community, and entertainment for all ages.



TOWER MAGAZINE

DELIVERY VOLUNTEERS REQUIRED

Magazine delivery: 10 Magazines

Little Knowl Hill; Residential and Business units

We are also looking to update our list of reserve and regular and volunteers.

A few of our long serving and dedicated volunteers are wishing to hang up their magazine bags in the near future. They have delivered the magazines to you with details and information of local events and services, come rain or shine each month January - November for many years. To enable us to continue with the distribution of the magazines into the future your help will be much appreciated.

If you are available to offer any spare time at the end of the months (January- November) we will be pleased to hear from you, it will be greatly appreciated.

Contact **Brian Elborn**, Distribution & Advertising Co-ordinator, at b.elborn345@btinternet.com or call **07741 075473**.

Kingsclere Village Bunnies Baby & Toddler Group

Where: The Village Club, George St

When: Tuesdays, 9:00am – 11:00am

Cost: £2.50 for 1st child (including snack for child and hot drink and biscuit for adult), 50p per extra child, £1 per extra adult



We are a friendly group of parents, grandparents and childminders with children from tiny babies to energetic toddlers! We love welcoming new visitors to our play sessions. We enjoy outdoor and indoor play, craft, toys and singing together.

We will be open as usual during the Easter Holidays with some special activities planned! Bunnies' siblings are welcome on Tuesdays 31st March and 7th April. The library will be opening especially for Bunnies on 14th April.

Thank you as always to Swan Street Stores for their continued support of a weekly donation of fresh fruit snacks for the Bunnies. For information visit our Facebook page, or regular visitors can join our WhatsApp group for weekly updates.

Lydia Harley-Tomlinson lydia.harleytomlinson@gmail.com

Kingsclere Pre-School



At Pre-School we have been learning about Minibeasts. We have been making playdough bugs, painting butterflies and searching for creatures in the outside area.

We have also been getting ready for the Spring by planting some seeds in our outdoor area. The children are excited to care for them and watch them grow.

We are planning a Grounds Day on **Saturday 25th April**.

Kingsclere Preschool Needs Trustees!

Kingsclere Preschool is a charity run by a volunteer committee, but our trustee numbers are declining. We're looking for new volunteers to help keep this vital part of our village thriving. You don't need any prior connection to the preschool - just a DBS check (covered by us) and a few hours each month for meetings and follow-ups. Without trustees, the preschool can't operate. If you're interested, email: committee@kingsclerepreschool.co.uk to learn more.

Kingsclere CE Primary School



This half term has once again been rich in learning and activities at Kingsclere CE Primary School.

Our Year 5 and Year 6 pupils enjoyed a fantastic visit to the Winchester Science Centre, where workshops, hands on exhibits, and the Planetarium deepened their understanding of Space. The children returned full of curiosity and enthusiasm.

Across the school, we have continued to strengthen children's oracy skills, focusing on exploratory and presentation talk. Pupils have been learning about the physical, linguistic, cognitive, and social-emotional skills that support confident communication. It has been wonderful to see all children being coached by their teachers in developing their oracy skills.

We were delighted to welcome Revd. Canon Dodie Marsden following her visit to Kyankowe in Uganda. She shared a classroom diorama and stories from the children at Kyankowe School, including a tale written in their own words in response to the Aesop-inspired fables re-written by our Year 6 pupils. This exchange enriched our Collective Worship on Global Neighbours and deepened pupils' understanding of global friendship.

World Book Day brought great excitement, with children and staff arriving in creative costumes including many props! In the afternoon, children shared their favourite stories across year groups and Mrs Stephenson, our English Lead, led a special Assembly on the joy of reading.

Looking ahead, 60 of our Key Stage 2 pupils will represent our school at the West Berkshire and North Hampshire Primary Schools Cross Country Event 2026. We wish them all the very best of luck in the competition!

Jo Messenger, Headteacher

WOLVERTON MARKET

The next Market will take place in the Village Hall on **Saturday 4th April** from **9.30am until 11am**. Entry is free and Tea and Coffee are available to purchase. There are lots of stall selling a large variety of items. Do come along and support us and we look forward to seeing you.

Wendy Morgan 01635 297538

April in the Garden

Now we have the longer days and hopefully better weather we can get on with some jobs needed to be done in the garden.

With warmer weather, the dreaded slugs increase; a real problem for hostas.

One way to discourage slugs and snails is to use a garlic spray:

<https://newforesthostas.co.uk/pages/garlic-spray-recipe> Boil two whole bulbs of garlic in 2 pints water for 10-15 minutes, leave to cool then strain off the liquid concentrate into a plastic bottle. Mix 1 tablespoon of concentrate with 4 pints of water and spray every 7-10 days in the early evening and also after rain. If you grow hostas now is the time to divide them.

After all the rain we have had fertilizing is much needed. Most fertilizer requires warm weather to work. When the daffodils have finished flowering, I give mine a sprinkling of potash to promote next year's flowers.

Most lawns will need to be cut with the blades set high to begin with, as cutting too short will result in the grass going yellow. It's time also to start feeding and weeding the grass.

There is still time to plant evergreens and hedges; one advantage of growing a hedge they will not blow down as wooden fences often do in strong winds.

Planting and dividing perennials can still be done. This is a good time to plant summer bulbs including gladioli and dahlia tubers. Sowing hardy annuals can be done now, including sweet peas. Start staking perennials, as it is easier now before they become large. Also tie in climbers to keep them tidy. Plant summer baskets, but they will need to be kept somewhere frost free. Prune roses, remembering climbing roses will need cutting down too. If left to grow very tall, you would only be rewarded with flowers at the very top of the plant. Prune lavender, trimming the flowers to encourage new growth.

This is a busy time in the vegetable garden, thinning out any seedlings that have been germinated. Sow leeks, tomatoes, courgettes, and herbs. Plant main crop potatoes and earth up early potatoes. If you like strawberries, they will grow happily in pots which can be planted now. Berries and currants need to be fed with high nitrogen feed to give them a boost.

If you have a compost heap that is ready to be used, it is good to mulch now to retain the moisture in the soil before the hot weather comes.

Take soft wood cuttings using new shoots from deciduous shrubs, such as hydrangeas, buddleia, lavatera; they should develop roots within four weeks. Fig trees can be pruned now, but they need to be done with great care.

Plants in flower now include lily of the valley, snakes head fritillaries, rhododendron, alpine clematis, bergenia, aquilegia, dicentra, aubrietia and epimediums. There will be also many trees in full bloom; hopefully there will not be a late frost to damage the blossom.

Denise Allen

Nature Notes

Walking through St Mary's churchyard this month, watching my daughters play beneath one of the magnificent yew trees, I noticed a cloud of yellow dust drifting in the air around us. I thought this might be a tiny blossom, but later discovered it is in fact, pollen.



From February, male yews (*Taxus baccata*) develop very small, dull-coloured conical flowers which turn yellow as they produce pollen; then golden showers are released on the wind, at their most intense during March. If you are like my husband and are already suffering the effects of hayfever this early in the year, it is likely that you can blame the yew as the pollen is highly allergic.

The breeding season is well underway this month with more than one blackbird wrestling match sprawling on to our path as we walk to preschool in the mornings. Blackbirds (*Turdus merula*) are highly territorial, and males will vigorously defend their breeding and nesting areas from competitors.

It's usually the furious squawking that we hear first, then two tangled males rollout from beneath the bushes, trying to peck each other's eyes out, then they separate to dive bomb each other from a few feet above in the air. It's not simply bravado – males will attempt to defend the same territory for their entire lifespan.



On one early morning dog walk, I was delighted to come across a common frog (*Rana temporaria*) in the middle of the pathway. Suddenly lit up by my torch, I very nearly trod on it, sitting motionless in the dark – perhaps trying to disguise itself from my dog, (though it needn't have worried as Daisy's sense of smell is about as good as a banana's). It looked quite large, so perhaps it was a female looking for a pond and a mate, ready to spawn. Sadly, we haven't seen any frogspawn in our pond this year, despite many froglets hatching last year and our leaving wood piles to encourage them to hibernate nearby. However its absence may be due to our growing colony of newts, which predate on spawn and tadpoles.

Lydia Harley-Tomlinson

lydia.harleytomlinson@gmail.com



Theatre in Shakespeare's London Wednesday 15th April at 10 am St Mary's Hall, Overton



Ian Porter explains how Elizabeth's security measures and the desire of the Puritans to keep the riff raff out of central London, led to the coming of the theatre.

And did Shakespeare actually write his plays?
How did he become the unique genius we know today?

Free to members - Non-members £3 on the door

Cali Kids Swim Lessons Return to Kingsclere!



Cali Kids swim lessons are back at Kingsclere CE Primary School after May half term! Cali Kids offers small, friendly classes for children aged 4 – 12, with levels ranging from complete beginners to advanced swimmers.

Running **June 1st – July 17th**, these popular after-school lessons take place on **Mondays, Wednesdays & Thursdays** from **3:30 – 6:00 pm**, making it easy to fit swimming into the school week.



Whether your child is just starting out or ready to refine their technique, there's a class to help them build confidence and skills in the water. Spaces are limited and these sessions fill quickly, so early booking is recommended. Book your place now: bookwhen.com/calikids

Give your child a skill for life this summer!



info@whitchurchsilkmill.org.uk
Tel: 01256 892065
www.whitchurchsilkmill.org.uk

Spring is always a special time at Whitchurch Silk Mill, and this year is no exception. With the arrival of longer days and brighter weather, we're enjoying the sense of renewal across our historic site and looking forward to sharing a busy programme of events, workshops, and opportunities for our community to get involved.

Call for Flower Festival Displays:

Following the great success of our Open Gardens events, we are delighted to be launching our very first **Flower Festival** on **19th – 21st June**, open daily from **10.30 am – 5 pm**. This new celebration of creativity, nature and local talent will fill the Mill and its riverside grounds with floral-inspired displays of every kind. We are inviting gardeners, makers, and creative individuals of all ages to help us create something truly special, from imaginative crafted arrangements to fresh flowers, stitched or sculpted pieces, or contributions to a large installation that will cascade from the top of the Mill down to the lawn. If you would like to take part, please contact Jess or Sue at

info@whitchurchsilkmill.org.uk. Further information is available on our website.

Heritage Craft Workshops:

If you're looking to try something new this spring, our programme of craft workshops offers the chance to learn a traditional skill in a relaxed and friendly environment. Highlights this month include:

- **Viking Weave Jewellery Workshop (11th April).**
- **Two-day Beginner's Weaving Course (17th - 18th April).**
- **A practical Darning Workshop (25th April).**
- **Our always popular Silk Production Tour (28th April).**
- We're also offering an **Intermediate Weaving Course on 29th April** for those ready to take the next step. Full details and booking are available via our website.

What's On This Spring:

The **Whitchurch Folk Festival** returns on **9th May**, and we're excited to host a range of performances, workshops and activities within the Mill grounds.

Looking further ahead, on **11th June**, tailor Philip De Paola joins us online to discuss his recreation of George Washington's 1789 suit, made with silk woven here at the Mill.

THE KINGSCLERE TOWER DIRECTORY

POLICE, FIRE or AMBULANCE

Police Enquiries/Information

Emergency 999
non Emergency 101

Kingsclere Health Centre:
North Hampshire Hospital, Basingstoke

0333 034 1033
01256 473202

Parish Council: 37 George Street (see page 2)

01635 298634

Kingsclere Charities Clerk: Gillian Hern

07884 182696

kingsclerecharities4@mail.com

Dial-a-Ride

01256 462101

CHURCH CONTACTS

St. MARY'S CHURCH:

Vicar Peter Williams vicar@stmaryskingsclere.co.uk

Church Warden:

John Price johnsaprice@hotmail.com

01635 297780

Administrator:

Natalie Follett

01635 299528

administrator@stmaryskingsclere.co.uk

07422 687125

METHODIST CHURCH:

Minister: Rev Rachel Borgars

07889 905753

Rachel.Borgars@methodist.org.uk

01256 895878

Secretary & Hire of Hall Jeanette Billington

01635 297585

ROMAN CATHOLIC:

Rev Stephen Vooght

0118 9814572

tadley@portsmouthdiocese.org.uk

Bas & Deane	01256 844844	Kingsclere Library	01635 297464
Buses	0345 8101000	Swan Street P O	01635 291923
Trains	0845 7484950	Kingsclere Vet	01635 896330
Gas Emerg.	0800 111999	Berkshire Vet	01635 896333
Chemist	01635 298419	Dentist	01635 299981

BOROUGH COUNCILLORS

David Conquest 07887 871105 cllr.david.conquest@basingstoke.gov.uk

Mike Bound 07833 612735 cllr.Mike.Bound@basingstoke.gov.uk

Kerry Morrow 07725 819021 cllr.Kerry.Morrow@basingstoke.gov.uk

COUNTY COUNCILLOR

Tom Thacker 07712 695468 tom.thacker@hants.gov.uk

MP for N.W. Hampshire:

Kit Malthouse 01264 401401 kit.malthouse.mp@parliament.uk

2, Church Close, Andover, SP10 1DP

There is a more comprehensive list of local contact numbers on the Parish Council website. Go to www.kingsclere-pc.org.uk/directory