

SPRING 2022

MARDEN PARISH COUNCIL

NEWSLETTER



Copyright Matt Thomas

DATES FOR YOUR DIARY

VILLAGE SPRING LITTER PICK - SATURDAY 2ND APRIL 2022

MARDEN 2037? A VISION FOR MARDEN - SATURDAY 7TH MAY 2022

LIGHTING OF THE BEACON EVENT - THURSDAY 2ND JUNE 2022

MARDEN CELEBRATES THE QUEEN'S PLATINUM JUBILEE - SATURDAY 4TH JUNE 2022

A LOOK AT THIS ISSUE:

VISION FOR MARDEN - PAGE 4

FESTIVE LIGHTING - PAGES 6-7

QUEEN'S PLATINUM JUBILEE - PAGE 24



LOCAL COUNCIL
AWARD SCHEME
QUALITY

UPDATE FROM THE CHAIRMAN OF THE PARISH COUNCIL

Dear Resident,



Happy New year to you all. I hope that many of you have stayed fit and well although Covid seems to be all around us at the moment, but with restrictions lifting life is returning to some semblance of normality. We were delighted to be able to hold Marden at Christmas again and what a great day it was. We're now busy planning events to celebrate the Queen's Platinum Jubilee in June and I hope many of you will join us for a really big community get together. Along with this newsletter you'll find a list of key contacts in and around Marden. The Parish Council is grateful to Dr Julie Morgan, John Haddow, Chair of the Patient Participation Group, and Cllr Anne Boswell who have compiled this very useful list. Please keep it handy, you never know when you might need it.

A very warm welcome to Marden to all new residents who have recently moved to the village. There is lots going on in our village, much is covered in the newsletter, which is published 3 times a year and delivered to every household in the parish. For those of you who use social media you'll find us on Facebook, Twitter, and Instagram and for those who don't why not sign up for our weekly e newsletter?

You'll find information on all these types of communication in the newsletter.

We also have a welcome pack for new residents, you can find this on our website at:

<https://bit.ly/VillageWelcomePack>

The Annual Parish Meeting is being held on Tuesday 5th April and for the first time for 2 years we can hold in person. Why not come along and meet the Parish Council and hear first-hand about what we get up to in Marden?

Warm wishes

Cllr Kate Tippen

CORONAVIRUS UPDATE

The pandemic has gone on for a lot longer than we first imagined and has deeply impacted communities across the UK where we have had to face significant challenges and losses. We want to thank every single person who has stepped up and supported their neighbours, loved ones, and colleagues through this crisis - every small act makes a difference, especially in difficult times. We have had to learn to live with this pandemic but now there is growing confidence the Omicron variant is retreating and restrictions have now been lifted. We all know there is no magic wand to make the virus and the variants disappear, instead we will probably need to get used to a new buzzword "endemic" - which means Covid is, without doubt, most likely here to stay. Whatever lies around the corner, let's be resilient and optimistic for life in 2022 and our vibrant community in Marden can return to normal just as it was before the pandemic.

GENERAL UPDATE

Communication

The Parish Council strives to pack in as much information as possible into the Newsletter and give updates on our Facebook, Instagram and Twitter pages about the work we do and other services such as health & wellbeing, roadworks, crime figures etc. Village groups also have an opportunity to give an update on their activities. We hope you find this useful and if there is anything else you would like to hear about, then please let us know, we always want to have residents' feedback and suggestions.

Parish Council Finances

The Precept is collected by Maidstone Borough Council (MBC) on behalf of the Parish as part of the Council Tax and the Parish Council makes every effort to maintain the existing level of service as well as staying on a sustainable financial footing. We always strive to be prudent and diligent with our finances.

Councillors have undertaken a thorough review and for the last three years we have not increased the amount of money collected from residents to be spent in Marden. However, due to the rise in inflation and an increase in various services, the Parish Council has made a slight increase which means the amount of money collected from residents to be spent in Marden in the next financial year from April 2022 for a Band D

taxpayer will now be £77.55 per annum or £6.46 per month. This is only an increase of £2.98 per year or 25p per month to a Band D property.

Parish Council Meetings

We are still not permitted to hold virtual meetings, so we are legally bound to hold them face-to-face. With the lifting of restrictions Cllrs felt that the Parish Office meeting room was still too small so have taken the decision to trial returning to The Allens Community Room, Albion Road for its Amenities Committee meetings from February meeting (22nd February). A risk assessment will be undertaken prior to the first meeting and if this trial works the Full Council will begin holding its meetings there from April.

The Planning and Finance Committees will continue to meet in the Old School Room, Marden Memorial Hall as they both require the use of the projector screen for the meetings. If you wish to attend a Full Council, Planning or Finance Committee meeting, please can you let Ali know; or if you wish to attend Amenities, please let Rachel know as it may require moving meetings to a larger venue if numbers exceed the limit.

You can check out all agendas and minutes on the Parish Council website, village notice boards, Facebook and the weekly-e newsletter:
<https://bit.ly/MinutesandAgendas>.

GENERAL UPDATE CONTD

Annual Parish Meeting

This year's Annual Parish Meeting will be held on Tuesday 5th April at Marden Memorial Hall commencing at 7.30pm and all residents are welcome to attend. All village organisations will be contacted in the next few months asking for a report on their activities over the past year and this will be made available at the meeting and on the Parish Council website. Speakers are to be booked so if you know of anyone you think would be of interest to the village, please let Ali know.

Marden Playscheme Monday 25th July-Friday 5th August 2022

We are delighted to announce that the Parish Council will be running the Summer Play Scheme (unless restrictions change) again this year from Monday 25th July to Friday 5th August from 9.30am-3.30pm at Marden Primary Academy (to be confirmed). The scheme is for 5-12 year-olds (please note that your child must have reached the age of 5 by 1st September 2021 (born before 1st September 2016) and will include Year 7 children). Registration forms will be available from 6th June from the Parish and School Offices, or online at: <https://bit.ly/MPCSummerPlayscheme>. Fees are £5 for a morning session (9.30am-12.30pm) or £10 all day. Pre-booking is advisable. If you would like your child/children to attend, but are experiencing financial difficulties, please do not hesitate to speak with Alison on a confidential basis after 6th June 2022.

Parish Council e-Newsletter – “Weekly Village Round Up”

Have you signed up for the Parish Council e-newsletter yet? Every Friday afternoon the “Weekly Village Round Up” lands in your inbox full of local news, information and updates. If you are keen to see what is being discussed at Parish Council meetings, then this is a great way to view the agenda for the following week as well as planned roadworks, forthcoming events and much more.

You can either email Rachel at deputyclerk@mardenkent-pc-gov.uk or fill in your details at: <https://bit.ly/MPC-E-NewsletterSignUp> or scan the QR code below on your mobile phone camera.



Parish Notice Boards

There are currently Parish Council Notice Boards outside the Library, the Old Post Office, the Parish Office at the Memorial Hall, Chainhurst at Raynham Villas and Highwood Green. Redrow has now agreed to install a notice board at The Parsonage and Millwood has agreed for the Parish Council to take over the notice board at Windsor Meadows. Agendas are displayed on the boards as well as other useful information.

Marden at Christmas

Despite the restrictions we were fortunate to have been able to celebrate Marden at Christmas and what a resounding success it was to help lift spirits at the start of the Christmas season and the community to come together again.



It was wonderful to see so many people out and about enjoying the event on a lovely sunny day. There was a great turnout at The Allens with Carols and music by the Silver Band followed by the excellent Morris Dancers. The poor Devil in the Stocks at the Library took a pounding and the Church had a lovely display of Christmas Trees by the village groups. There was a great turnout at the Craft Fayre and Santa's Grotto at the Memorial Hall. The queue for Santa was so long – never have so many families come to visit him before in Marden and he was so happy to see so many children before he returned to Lapland! Children were excited participating in the Elf Trail and Santa received lots of letters from them too. Well done to those residents and businesses who participated in the Festive Front Display.

Meet the Clerks

Both Ali and Rachel will be starting the Meet the Clerks again next month on the fourth Thursday of each month at The Old Post Office Café from 10am to 12noon. Come along and say hello. It is hoped that we will be able to invite the Community Protection Team along at some of these sessions in the future. Dates for your diary are:

24th March, 28th April, 26th May, 23rd June.

PLANNING UPDATE

Marden 2037? A Vision for Marden

Marden Parish Council would like to hear your views on the future of the village and wider parish. Come along to the Memorial Hall on Saturday 7th May to let us know what you think – see the image on page 30 of this newsletter.

Parish Council Planning Meetings

The Parish Council is keen for residents to attend MPC planning meetings which are usually held on the first and third Tuesday of each month at 7.30pm currently in the Old School Room at the Memorial Hall. Agendas for all meetings are published the week before and placed on notice boards around the village, on the Parish Council website, Facebook page and weekly e-Newsletter. Please note that MPC is a statutory consultee and does not make the final decision on planning applications; this is done by Maidstone Borough Council.

PLANNING UPDATE CONTD

You can check out planning applications on MPC's website under "Planning Tracker" or on Maidstone Borough Council's website: www.maidstone.gov.uk

Maidstone Borough Council (MBC) Local Plan Review (LPR) - Regulation 19

Maidstone Borough Council (MBC) held a Regulation 19 public consultation between 29th October and 12th December 2021 on the draft Maidstone Local Plan which gave the public, stakeholders and others with an interest in the borough the opportunity to make comment. MBC received 2,215 responses and some major modifications will be made and presented at the MBC Strategic Planning & Infrastructure (SPI) meeting on 21st March. It was disappointing that the Land North of Copper Lane and Albion Road sites were still included in Regulation 19 which have now become LPRSA295. At Regulation 18b in December 2020, the Parish Council submitted and expanded upon the reasons for the unsuitability and unsustainability of these two proposed sites.

After extensive discussions at planning meetings, the Parish Council submitted its comments to MBC on 10th December 2021. We reiterated our concerns about site LPRSA295 and whilst conditions have been applied in the Draft Local Plan to mitigate some

of the risks recognised in the Parish Council's Regulation 18b submission, further conditions were identified which we would like to see applied should this site still be included in the approved Local Plan. You can view the Parish Council's full submission on their website: <https://bit.ly/LPRReg19>

The revised MBC Local Plan is due to be adopted in January 2023 and the next step is for MBC to submit documentation once agreed for Independent Examination (Regulation 24) by an Inspector appointed by the Secretary of State which should commence in May and hearings being received later in the Summer. You can find further details about the Local Plan Review on the MBC website: www.maidstone.gov.uk but the Parish Council will keep you updated.

Sheepwash Energy Farm

As reported in the Autumn Newsletter, the proposed development is for a solar energy farm at Little Cheveney in Sheephurst Lane which lies in the Parish of Collier Street but borders Marden in the north-east of the site. The site area is approximately 78 hectares which would generate and store up to 60 megawatt (MW) of renewable energy to be exported to the National Grid. As part of the pre-application public consultation, representatives from Statkraft attended a Parish Council meeting last August when a number of questions/issues were raised about the site.

As a result of the consultation, Statkraft has now made a number of amendments: a small reduction in the size of the solar array on the eastern edge of the site in order to create a further area for biodiversity as well as a second permissive footpath that will provide a link to Sheephurst Lane; two new ponds for biodiversity benefit; housing part of the battery energy storage facility in an open-sided barn to mitigate views from the east towards the solar energy farm; and the creation of a woodland copse in the south-east corner of the site. We expect the full planning application to be submitted shortly and it will then be discussed at a Parish Council Planning meeting.

Reed Court Farm Proposed Chicken Farm

This complex planning application is for the erection of a new free-range egg farm consisting of 3 hen houses with extensive outdoor ranges and fencing, formal vehicle access from Hunton Road and associated parking landscaping, woodland and tree planting, drainage and other associated works.

The Parish Council recommended refusal again last April and the 'We Love Chainhurst' group sought legal advice on this application. In October, Maidstone Borough Council requested further information pursuant to Regulation 25 of the Town & Country Planning (Environmental Impact Assessment) including a flood risk

sequential test and a quantification of the biodiversity net gain which should now be 10%. Further information has been uploaded to the Maidstone Borough Council website and was discussed at MPC Planning Committee meeting on 15th February and 1st March. A date for this to go to MBC Committee is not known at the time of print.



PROJECT UPDATE

Village Festive Lighting

Thank you to those residents who erected the old Christmas trees and lights on their properties. The Parish Council was very dissatisfied with the wrap around Christmas lights we had chosen on lamp posts through the centre of the village (14 columns). They certainly weren't what we had expected and understand residents' disappointment with them.

After discussion with the supplier we have not been charged for the garlands and only for electrical sockets which will be re-used. It has been agreed we will not use the supplier in future and the Parish Council is in the process of obtaining quotes for wraparound garlands on the street lamp columns from other contractors. It is unfortunate the lamp posts throughout the village are short in height and generally littered with signs restricting what lighting can be erected on them.

PROJECT UPDATE CONTD

However, 14 lamp posts now have electrical sockets installed which could be used for CCTV cameras in the future, as well as Christmas lighting. Following advice, we are unable to install motifs due to the height and positioning on the lamp posts and therefore will be looking at wraparound garlands for Christmas 2022 and onwards.



Once information is received as to what we could consider together with costings, we will undertake a survey in the summer for your thoughts.

Parish Council Infrastructure Spend Plan (ISP)/Wish List

It was so helpful that residents recently completed a survey so we could gain feedback on the proposed plan which is based on residents' preferences from a consultation in 2019 and an Open Morning last September. The ISP is to identify the infrastructure and investment needed by the Parish and we have started to allocate capital funding towards potential projects as well as any CIL money we receive. Councillors are currently in the process of identifying what the priority items

are to residents and we will let you know the outcome in the next newsletter.



Library Area Path

You will have noticed that work has been completed at the Library area where an extra layer of slabs have been laid to form a safer path for residents to use. Thank you to our County Councillor Lottie Parfitt-Reid who made a donation towards the cost of the works and to the contractor who made such a good job. A new flower bed will also be planted by Councillors Boswell and Tippen by the pathway to brighten the area up further.

Allotments at Highwood Green

Once again little progress has been made with Redrow on the transfer of the freehold land at Highwood Green to the Parish Council. During the pandemic we had very little response from Redrow, despite numerous emails chasing them. We discovered a few months ago that our contact at Redrow had left the company.

We now have a new contact and have sent him all the details and we are hopeful that a meaningful dialogue will now commence. Once again, many apologies for the delay to those residents who have put their name down for an allotment plot and who have formed an allotment association and thank you for your patience. We remain optimistic that headway will be achieved soon, and a favourable outcome will be achieved for all parties concerned.

HIGHWAYS & PUBLIC TRANSPORT

Parish Council Highways Improvement Plan (HIP) Update

Many thanks to all those residents who participated in the recent HIP survey which will allow the Parish Council to re-evaluate our 'wish list' of all the highway improvements that Marden needs. Your input is vital to help us ensure that the Parish Council is prioritising highways issues that are important to you. We review the plan regularly with Kent County Council who are responsible for highways, but they have very little funds or resources to be able to deliver improvements (they are only likely to receive £30,000 for the whole borough this year). For example, if an island was installed at a junction, it would cost approximately £45,000 and a Traffic Regulation Order costs around £3,000. The Parish Council has now been able to allocate some capital funding towards a few

enhancements and we are currently in the process of analysing your feedback on what the priority items are to you. We have also held another meeting with Kent Highways to see what work could be feasible in the short-term. We will let you know the outcome in the next newsletter.



Gateway Sign

Finally, we have a gateway sign installed in Thorn Road which Kent Highways agreed to fund. The Parish Council is still hoping that one will be positioned on entry to the village in Goudhurst Road which was one of Redrow's highway conditions. We will also add gateway signs and road markings in Chainhurst to our Highways Improvement Plan.

Community Speed Watch

The Parish Council put a shout out in the last Newsletter for a Speed Watch Co-ordinator and more volunteers. Many thanks to those residents who have come forward to help and Ali the Parish Clerk will be in touch with you once the speed watch sites have been re-evaluated to meet the criteria.

HIGHWAYS & PUBLIC TRANSPORT CONTD

Community Speedwatch (Contd)

The Police Cadets may also become involved which would be a police led initiative.

The Parish Council is very concerned about the amount of traffic and speeding which cause so many problems in the village, so If any other residents would like to help, please let Ali know by email: clerk@mardenkent-pc.gov.uk or call 01622 832305.



Road Accidents in Marden

Have you witnessed a road incident or accident anywhere in Marden? Because official figures only account for fatalities and serious injury accidents, we are often told that our roads are safe. It is especially useful to have details of all accidents (or near misses) when planning applications are made and Kent Highways find they have no objections because there are no reports on their systems. To make reporting incidents easy for all residents to help, please let Ali in the Parish Office know with simple details such as the date, time, road, location, direction of travel, vehicles involved, any injuries, damage, police or ambulance involvement etc. All data collected will help form a clearer picture of where action is needed.

Speed Indicator Device (SID)

You will have noticed that the SID is now operational and has been in position on all three agreed sites and will be moved every 8 weeks. It was first positioned on entry to the village in Goudhurst Road. We received some encouraging feedback on the second site in Howland Road where the effect of the SID proved extremely positive during the day and evening. It has now been moved to the third location in Thorn Road. Software is being installed on the Parish Council computer so the data can be downloaded for monitoring purposes.

OPEN SPACE

At Marden Playing Field the Parish Council is in the process of adding additional CCTV cameras – a static camera looking towards the youth shelter and a roaming camera to track across the field which will pick up anything moving e.g. motorbikes. An additional camera will be positioned on the existing CCTV pole by the play area.

All the outdoor gym equipment has now been installed and we hope residents are making good use of this facility for your health and wellbeing. Unfortunately, Marden Minors Football Club had to withdraw playing at Marden Playing Field last Autumn because a pitch inspection by the



Kent Football Association found that the length of the pitch on one side was outside of the FA regulated proportions which forced them to stop playing. However, it has now been agreed they can recommence play without moving the goal posts until the Summer when they will carry out the pitch lengthening exercise. Please see piece below re call out for Veteran players. A new Dog Bag Station has been installed on the playing field to help dog walkers pick up their dog waste (see photo below).



At Marden Cemetery, we are pleased to announce we will be creating a separate section for the scattering of ashes. You can find the updated Rules and Fees on the Parish Council website.

Because of the increase in the use of Southons Field, another bin will be installed at the entrance to the field. Can we remind residents that dogs (apart from assistance dogs) are not allowed in the field. Please note the field is open during daylight hours only: Feb-March 8am-6pm (or dusk if earlier), April-Aug 7am-8pm, Sept-Oct 7am-7pm, Nov-Jan 8am-6pm (or dusk if earlier).

Both residents and village groups are welcome to hire the field and please contact the Clerks at the Parish Office.

POLICE & CRIME UPDATE

Crime Figures

Between August-November last year there were 14 crimes committed in Marden which included a number of burglaries and a robbery at the West End Stores - investigations are ongoing for these crimes. The PCSO has received several calls of off-road bikes which are being dealt with. There have been extra resources placed in Marden recently due to a spate of burglaries before the Christmas period. A number of vehicles have also been stopped and our PCSO is working closely with British Transport Police and Railway Enforcement Officers due to a number of incidents reported to Police on the trains between Marden and Paddock Wood.

Anti-Social Behaviour

Prior to the end of January, little anti-social behaviour in Marden had been reported through 101. However, on 29th January there were various reports of criminal damage in the evening. It is so important to tackle ASB in our village by ensuring it is reported - whether it's broken glass in the playground, groups intimidating people in the park or at bus stops - reporting to 101 is the way to ensure the Police take action.

Anti-Social Behaviour (Contd)

So please, please, please help by ensuring you report all incidences no matter how small as policing resource is allocated based on data, so reporting is critical. Did you know you can also report using an online chat button on: <https://www.kent.police.uk/> - it's a blue button bottom right.

ASB Officers at Maidstone Community Safety Unit work alongside other officers in the community safety unit as well as other partnership agencies to tackle ASB. They are working hard to help to reduce ASB in the Maidstone area utilising the ASB powers they have available. Prior to Christmas, they had successfully obtained 6 Criminal Behaviour Orders on individuals that are persistently causing ASB, 1 Civil Injunction and issued over 80 Community Protection Warnings in the Maidstone area.

Maidstone Community Protection Team

Unfortunately, the Community Protection Team will no longer be holding surgeries in Marden. They will continue to work with the KCC Community Warden, local PCSO and the Parish Council to offer support, advice and a referral process to the community as before and can be contactable by phone on 01622 602202 or email: communityprotection@maidstone.gov.uk or laurabullen@maidstone.gov.uk You can also check out all the services they cover at: <https://bit.ly/MBCComProt>

Ward Cluster Meetings

Ward Cluster meetings involve Kent Police, MBC's Crime Prevention Team, Maidstone Borough Councillors and Parish Councillors. The ward of Marden and Yalding is clustered with Headcorn and Staplehurst wards. Our PCSO is putting together an action plan, and this will be discussed at the next meeting in April. Key issues highlighted for Marden include pavement parking, irresponsible parking outside the school and speeding.

My Community Voice

My Community Voice is not for reporting crimes or incidents but is a messaging service that helps residents, businesses, and community groups to keep in touch with their local policing teams. The service sends updates about your local area directly from the police officers themselves. It allows you to reply to the alerts they send you, share information and tell them about the issues affecting you. They are committed to engaging with communities to increase trust and confidence and to help protect people from harm. Police, partners and the public working together can build resilient and safe communities, and both reduce and prevent crime. You will be able to play an active part in police appeals as well as keeping updated in what is happening in your local area. You can register on their website: <https://www.mycommunityvoicekent.co.uk/>

HEALTH & WELLBEING

Health, Wellbeing and Key Community Contact List

The Parish Council and the Patients Participation Group (PPG) have updated this useful contact list leaflet for residents to refer to which is enclosed within the Newsletter. We want to reach out to as many residents as possible especially those who have no online access. As you will see, there is a plethora of health and wellbeing advice and support available. Health and wellbeing is such an important part of everyday life and is integral to leading a happy and healthy lifestyle. It is particularly important for those experiencing loneliness, social isolation or poor mental health. We're lucky we don't need to go far as there is such a lot of exercise facilities in Marden ranging from the K20 cycling club, the outdoor adult gym at Marden Playing Field, the Russet Runners, various exercise classes - pilates, yoga, Zumba and a few mature classes, local gyms, sporting facilities such as cricket, hockey, tennis and football and the Marden Walking Group.

Marden Medical Centre Update

Once again, we would like to thank our amazing Medical Centre who went above and beyond vaccinating residents and to all the volunteer vaccinators, PPG volunteers and staff who have helped to make the Covid boosters such a tremendous success. Please continue to look at their website and Facebook page for updates and please ensure they have up-to-date contact details for you: <https://bit.ly/MardenMedical>



Marden Medical Centre Patient Participation Group (PPG)

Are you a patient of the Marden Medical Centre and would like to have a say in your or your family's healthcare? Do you have an interest in ensuring the Marden Medical Centre and the local NHS Hospitals & Specialists offer you the services you want - when you need them? We have an excellent Medical Centre in Marden. The GPs and staff take a keen interest in patient feedback. Have you considered joining the Patient Participation Group (PPG)?

The Marden Medical Centre PPG is free to join, there is little call on your time unless you want to volunteer to offer more help, you will receive regular email updates and be advised of any important Marden Medical Centre information.

For the latest information see : <https://www.marden-prg.org.uk/>. Alternatively contact John Hadow via email at ppg@mardenppg.org.uk, or call him on 07769 538897.

Marden Food Bank

2021 was a challenging year for everyone. But as 2022 begins, many in our community are continuing to face difficult times.

Marden Food Bank (Contd)

Marden Food Bank (which has been operating for nearly two years now) supports families and individuals with additional food, hygiene and baby supplies, and whilst we cannot provide everything everyone needs, we hope that what we do give is enough to allow household budgets to stretch a little further – especially now, with the prices of fuel and food leaving us all feeling the pinch.

We work with Marden Children's Centre and Marden School when necessary to ensure there is practical, hands-on support for local families; visitors can call in to meet with colleagues from Involve Kent, a charity who provide advice, encouragement and support to resolve problems affecting an individual's health - but we are also always here with a listening ear and time for a chat. Our Food Bank is solely reliant on donations. We only manage to continue to stay open because of all the generous individuals, businesses, clubs and societies in and around Marden that donate food and money to keep this resource going. Please do continue to support us - and huge thanks to you all, for helping us help others. All donations can be dropped to the Vestry Hall on a Monday morning or left on the Vicarage doorstep at any time. For further info about the food bank please contact Kathy Young at office@mardenchurch.org.uk or 01622 831890.



Involve

Looking after your health and wellbeing can be hard sometimes but Involve can help. Do you need some advice, encouragement or help to be more active, improve your lifestyle or resolve problems affecting your health? The NHS now offers 'social prescribing' which means support around your non-medical needs. Involve is a local charity commissioned to provide this in your area.

We can help with: talking through worries, understanding your needs and setting a plan; linking you to community services to support your health and well-being goals, at your pace; access to hundreds of groups, digital services, organisations and tools tailored to your age, interests and health concerns; support with feeling low, anxious or unmotivated; advice and guidance to tackle problems like, housing, debt, unemployment; connecting you with others including local groups and social networks.

Please check out:

<http://www.involvekent.org.uk> e: wk.connectwell@nhs.net and leave a message with your details and we will call you back text or call 07414 827919 or 07475 073969





Come & Sing

Jenny, Julie, Pat and I are very much looking forward to returning to singing soon, and hope that you will join us if, and when, you feel ready, for singing, tea, cake and conversation. We shall meet at 2.30pm in the Vestry Hall on the following Thursday afternoons which take us up to Easter: 10th March, 24th March and 7th April. Please don't come if you feel unwell. Masks are no longer a legal requirement, but the current government guidance is that 'people are still advised to wear one in crowded and indoor spaces where they may come into contact with people they do not normally meet.' It will be great to see you again and to sing some music for springtime together so get practising!

Sarah Emmanuel - 01622 832925

Marden Children's Centre

Great news the Children's Centre is finally up and running again. It's open on Monday and Wednesdays 9am-5pm, so please go and give them a visit. Food parcels are available, and they are running their usual advice and guidance services as well as signposting people to the appropriate services. The NHS Health Team are working with them and have use of the building throughout the week.

Unfortunately, the drop-in baby weigh-in service is not available, but you can contact the Health Visiting Team to book at appointment on 0300 555 0506 or email: kentchft.maidstonedutyhv@nhs.net

On Mondays, there's a new parent group 10am-11am where parents can pop along to have a chat with other new parents and discuss any questions or worries you may have with members of the team. They cover child development, child safety, baby massage and introducing solids. You need to book a place by calling 01622 831 503 or emailing: mardenchildrenscentre@kent.gov.uk

On Wednesdays 10am-11am there's Baby Massage (6 weeks-5months old) which aids sleep, digestion and relaxation and is a 4-week programme. At 1.30pm-2.15pm there's Rhyme Time (0-5 years) which is a 6-week programme with a sing song/chat with other parents/carers and discuss any other concerns you may have with the staff. You need to book both Baby Massage and Rhyme Time by calling 01622 831503 or email: mardenchildrenscentre@kent.gov.uk





Marden Living Memories & Dementia Friendly Community

Spring is ahead, Covid behind, at last! We held an event in September generously supported by the wonderful music of the Roaring 20s Big Band while we all danced the Charleston and practised our Lindy Hop moves. We were then forced to lay low again for a while until 22nd January when we booked Latin for Sparrow at the Marden Village Club. This was a perfect opportunity to welcome everyone out of Covid and to thank the Village Club for the incredible support they have shown for Living Memories and the Dementia Friendly Community Project in Marden. Please pencil in Saturday 5th March at the Village Club and dig out your vinyls. Easy Ed will be playing some of your old favourites. Remember that familiar crackling sound before the music starts playing? Come along and reminisce. Thanks also to Marden in Bloom for making the Dementia Awareness Planter at the Library area. For more info, please email: rachel_chacon@hotmail.co.uk
Rachel Chacon

Marden Charity is here to help you - Registered with the Charity Commission 1183743

The Marden Charity is up and running for the benefit of all Marden residents and Marden voluntary organisations.

Since the charity was set up in 2020 Trustees have approved several grants to individuals and village organisations, including the Marden Food Bank to support its vital work in the village. The objective of the charity is to help Marden residents who are struggling financially by making grants of money available for the purchase of specific items, when support is not available elsewhere. The charity also supports village organisations to assist with specific projects for the benefit of the people of Marden.

What type of things are covered?

This is a grant to help with for example:

- Clothing e.g. school uniform, shoes;
- Glasses;
- Hearing aids;
- Household equipment e.g. fridge, washing machine;
- Education assistance e.g. text books, outings, training courses;
- Specific projects village organisations are running for the benefit of Marden residents.

How much can I apply for?

All grant payments will be at the discretion of Trustees a maximum grant of £100 will be payable to individuals and £500 to village organisations.

How can I apply?

Forms for both individuals and organisations can be downloaded from the Marden Parish Council website.

Marden Charity (Contd)

If you are an individual applying for a grant the form will need to be countersigned by someone in a professional capacity who knows about your circumstances or one of the charity's trustees (you will find their names on the website). If you are applying on behalf of a village organisation you will need a trustee to countersign your application. All the information about the charity, including details of the trustees and application forms can be found on the Marden Parish Council website:
<https://bit.ly/MardenCharity>

For any further information please email mardencommunitycio@gmail.com. All applications are dealt with in the strictest confidence and comply with all data protection requirements.

NHS Continuing Health Care

If you have a serious physical or mental health condition and you need ongoing care, the NHS may be responsible for providing it free of charge. This is known as NHS Continuing Healthcare and can include a place in a care home or a care package to help you continue living in your home. Even if you are not eligible for NHS Continuing Healthcare, you may still be able to get some help with your nursing care free of charge known as NHS-funded nursing care. People over 18 years of age who have been assessed as having a 'primary health need' are entitled to NHS Continuing Healthcare and eligibility is not dependent on a particular disease, diagnosis or

condition, nor on who provides the care or where that care is provided. There is a screening process with a checklist followed by a full assessment of eligibility which helps determine whether or not someone is eligible. Check out: bit.ly/NHSHealthcare

Paddock Wood Community Advice Centre (PWCAC)

PWCAC is open for face-to-face advice - appointments and drop-ins - Monday-Friday 9:30am-1.30pm. If you need advice about NHS Continuing Health Care, or housing and homelessness, debt, relationship breakdown, welfare benefits or anything else, get in touch: info@pwadvice.org or call 01892 838619 or check out: <https://www.pwadvice.org/>

KCC Community Directory

The KCC Community Directory hosts thousands of voluntary organisations, support groups and advice charities to help and support children and families in and around Kent. It is being updated daily with local clubs (arts, sports, dance, drama, gaming), sporting activities, events, parent groups and online education support. Visit their directory to find specialist educational needs and disabilities support nearest to you: <https://loom.ly/79EdXck>

If you are a business and you wish to register your details to help make a difference, please complete the online registration: <https://loom.ly/uO6UGio>

Walking in Kent

Walking in Kent has hundreds of walks to download and print. It also has books of walks, details of all the walking groups in the county and much more. Whether you want to walk on your own or with a group all the information is there in one place. With walks from half a mile to twelve+ miles, and a note of suitability for pushchairs and wheelchairs, everyone can find a walk to enjoy. Check out:
<https://www.walkinginengland.co.uk/kent>



DRAINAGE & WATER

Marden Flooding Issues

The Parish Council held a meeting last September with KCC to discuss the Marden Surface Water Management Plan (MSWMP) and the review of Marden Flooding Issues and Required Action report submitted by the Parish Council. However, KCC informed us they will not be revisiting the MSWMP for the time being as drainage and waste-water plans were thought to be more productive. Southern Water will be undertaking a review and work is due to start on the Horsmonden Sewage Catchment Area. You can find the documentation on our website: <https://bit.ly/MPCDrainageandFlooding> Ongoing, the Parish Council will be arranging meetings with stakeholders including KCC Drainage, the Upper Medway Board and Southern Water.

Flooding Road Closure Scheme

It has now been agreed that Marden will be included in the flooding road closures. Procedures are being drawn up and the roads to be covered are Plain Road (both ends), Sheephurst Lane (Goudhurst Road end), Green Lane (Hunton Road end) and Hunton Road, Chainhurst. We are awaiting delivery of the signage.

Local Watercourses, Land Drainage and Riparian Owner Responsibilities

KCC is committed to reducing the risk of flooding and has prepared a leaflet to provide information for landowners which outlines their responsibilities for the maintenance of watercourses on or adjacent to their land as set out in the Land Drainage Act 1991. If you have a watercourse on or adjacent to your land, please check out:
<https://bit.ly/KCCLandDrainage>



CLIMATE, SUSTAINABILITY AND BIODIVERSITY

We all have a responsibility to help mitigate the climate and biodiversity crisis and there's always more we can do or help to spread the word across our communities - each and every one of us can make a difference in the climate crisis and help to reduce our carbon footprint.

Marden Parish Council Sustainability Plan

Marden Parish Council has drafted a Sustainability Plan and we are planning to set up a Climate, Sustainability and Biodiversity Sub-Group at the Annual Parish Council Meeting in May. We are pleased to say we have already ticked quite a few boxes.

Keep Britain Tidy The Great British Spring Clean Marden Village Litter Pick Saturday 2nd April

Thanks to those residents who attended the village litter pick last October to help clean up our country lanes and village centre, but it was difficult to clear the rubbish in many of the ditches because of overgrown vegetation. As part of the "Keep Britain Tidy" campaign, we are planning to run another Litter Pick event on Saturday 2nd April at 9.30am starting in the John Banks Hall (next to the Memorial Hall). Marden Scout Group are hoping to come along to help and if you can spare a couple of hours to improve our local environment, please let Ali know: clerk@mardenkent-pc.gov.uk or call 01622 832305



Marden Tree Charter Day

On a wild and windy Saturday last November, the Parish Council held a Tree Charter Day. A short ceremony was held in Southons Field when a "Roots of Remembrance" tree was planted (Alder) for those who lost their lives or have been affected by Covid and a Crab Apple tree in memory of HRH the Duke of Edinburgh. The Rev Nicky Harvey kindly blessed the trees.



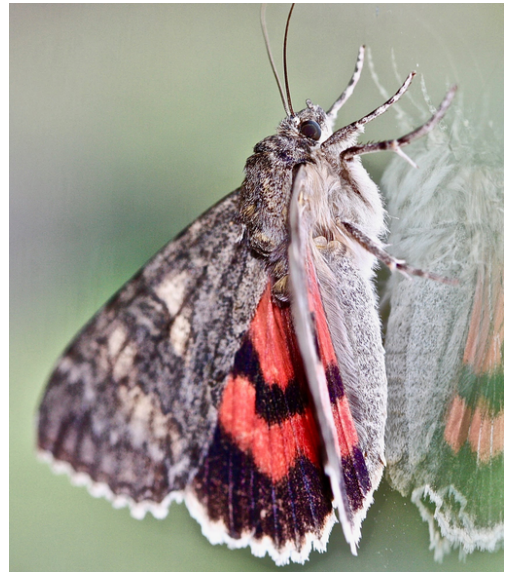
Around 200 saplings from the Woodland Trust were then planted at Highwood Green, The Parsonage and Windsor Meadows (with the management companies' permission). The saplings were all indigenous with a variety of Rowan, Silver Birch, Wild Cherry, Common Oak, Field Maple, Grey Willow, Hawthorn, Dogwood, Hazel, Blackthorn, Crab Apple, Elder and Dog Rose.

A big thank you to those residents who came along to help Councillors plant the saplings and also many thanks to Derek Owens who planted saplings at Appledown Grange. As not all the saplings had been received, Cllr Matt Besant then planted around 50 more at Highwood Green and The Parsonage. This is also part of the Queen's Green Canopy to celebrate Her Majesty's Platinum Jubilee celebrations this year – so a big sustainability box ticked! There are still more saplings to plant along the boundary of Southons Field and maybe some more at Windsor Meadow which we are hoping to plant early March.



Congratulations to the Marden Wildlife Group – Award for Wildlife Recording 2021

Huge congratulations to our amazing Marden Wildlife Group who are the winners of the UK wide National Biodiversity Network Trust Group Award for Wildlife Recording 2021. These awards recognise and celebrate the outstanding contributions those are making to wildlife recording and data sharing and improving our understanding of UK biodiversity.



Some of the Marden Wildlife Group are also in Kent Wildlife Trust's Marden Farmer Cluster – a collaboration between farmers and land managers to work together to deliver more for wildlife and the environment. Together, the two groups are providing massive wins for wildlife in Marden. Recording by group members is enthusing more farmers to take positive action to increase biodiversity on their land with an ambitious network of new Countryside Stewardship agreements in place, aiming to deliver landscape-scale enhancements.

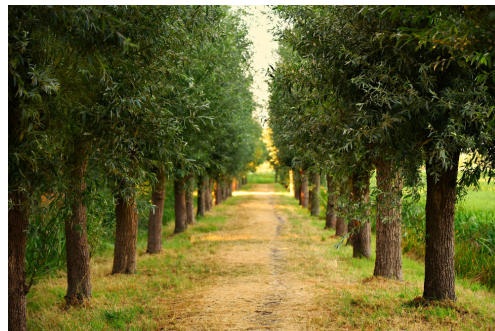


Marden Wildlife Group Update

The group is expanding its activities with local landowners, and continues to discover new and important local species, so new volunteers are always welcome. We have simple monitoring tasks – regular checks of bird nest boxes for example – that do not require a high level of knowledge, just enthusiasm as training can be provided.

One of our hardest tasks is encouraging engagement with young people, not least because of time constraints for existing volunteers, but also the legal requirement for safeguarding measures if they are not with a parent. If anyone has any ideas for widening our impact (or would like to help check nest boxes with their own children) please get in touch. Last year's hardback book was a great success (even Robert Redford has a copy) so we would like to consider a short video of what our work, linked with Natural England, RSPB, BTO and Kent Wildlife Trust is achieving. If there is anyone with the technical know-how and resources to help out we'd love to hear from you, so email: mardenwildlife@gmail.com

Ray Morris



Environment Act 2021

The Environment Act received the Royal Assent last November which makes provision amongst other things about targets, plans and policies for improving the natural environment; for statements and reports about environmental protection; Office for Environmental Protection, waste and resource efficiency; air quality; recall of products that fail to meet environmental standards; water, nature and biodiversity; conservation covenants; regulation of chemicals. One of the more ambitious provisions is the mandatory requirement for new developments to provide a 10% biodiversity net gain and this will be reflected when the Parish Council revise the Marden Neighbourhood Plan.

Marden Parish Council Tree Management Policy

The Parish Council has a duty of care to protect the trees on its open spaces and our Tree Management Policy has recently been updated and strengthened to incorporate sustainability, hedges, zoning, risk assessments etc. You can find this policy on the Parish Council website: <https://bit.ly/MPCTreeMgmtPolicy>

Marden Eco Hub Update

Please visit the Eco Hub recycle bins in the car park behind the Cherry Tree Chinese Takeaway in Maidstone Road and help raise money for local charities and reducing landfill. They collect: old bras, old glasses (no cases), print cartridges, used pens, egg boxes/cartons, toothbrushes, drink can ring pulls, used stamps, empty medication packaging, tubs and tubes, empty toothpaste, cheese nets and mini cheese packaging.

There is also a fabric recycling bin outside the Fire Station in Pattenden Lane. Check out the Marden EcoHub Facebook page where you can advertise free items:
<https://bit.ly/MardenEcoHubFacebook>

Diffusion Tubes

Diffusion tubes to monitor nitrogen dioxide levels have been located outside the School and the junction of Maidstone Road/High Street for the last couple of years. The latest results received from Maidstone Borough Council, which have been ratified by DEFRA, showed very low readings. The objective Nitrogen Dioxide level is 40 and the level outside the School was 11.9 and 14.5 at the junction of Maidstone Road/High Street.

It is very unlikely that Marden would reach the threshold level of 40, so the Parish Council has agreed not to continue with the diffusion tubes for the time being, but this will be reviewed periodically.

YOUTH PROVISION

A Senior Youth Worker with the Early Help Service from KCC is keen to provide support to the young people and families in Marden. He has been undertaking detached work engaging local young people which has shown there is much enthusiasm for setting up a youth group. They are hoping to get the group properly up and running in March. They are also looking for enthusiastic parents or members of the Marden community to support the delivery of a youth group. No qualifications are required but training will be provided to support whatever knowledge you already have. The aim of the group is to provide a place where young people aged 11-19 can go for advice or guidance and just to have fun, a safe place for young people, a place where they can up-skill and provide opportunities they might not ordinarily have access to. If you are interested or have questions, please contact Rob on 07825 633793 or email: Robert.Yorke@kent.gov.uk

OTHER PARISH INFORMATION

End of the Friends of Marden Heritage (FOMH)

Firstly, the Parish Council would like to thank the members of the FOMH for all their hard work over the last few years in fund-raising for both Marden Parish Church and the Heritage Centre and it's such sad news they are unable to continue their activities.

Since its foundation in 2009, the Friends of Marden's Heritage have organised many events including quizzes, concerts and the Big Musical Picnics. As of November 2021, £36,500 has been donated to Marden PCC and has been used largely to refurbish the church tower and windows, and £16,000 to the History Group which has funded the running costs of the Heritage Centre. However, since the pandemic the committee has been much reduced as, despite many appeals, no volunteers have come forward to replace our chairman and other members who have resigned. Almost all those remaining are over 75 and now find the workload of organising and managing events too onerous without substantial help. Therefore, the remaining Committee Members, who are the trustees, agreed unanimously that the charity should be wound up on Thursday 31st March 2022, and its remaining monetary assets divided equally between Marden PCC and History Group. This was agreed at a Special General Meeting of FoMH members on Tuesday 1st February 2022. The Trustees very much appreciate all the help and support they have received during the past 12 years.

Steve McArragher



Condolences

It was very sad news that David McFarland passed away in November and our condolences go out to his lovely wife Evelyn and family. David was a stalwart in the village and Chairman of the History Group for many years and latterly President. He was a permanent feature outside the Old Post Office café where you would see him nearly every day enjoying the village whilst sipping his coffee. He will be sorely missed in our community.

We would also like to mention Lorna Eltringham who sadly passed away in December and our thoughts go out to her husband Roger and family.

West End Stores Robbery

We are so sorry about the despicable armed robbery that Pat, John and their staff had to suffer at the West End stores last November and we would like to send our best wishes to them. The shop has been a vital part of the village community for over 30 years and one of the heartbeats of the village during some difficult times - they are always there and always reliable. Well done to the residents who organised a collection for Pat and John to show their appreciation in all that they do for our village. Another example of our community pulling together for each other.

Marden Library

It has been a pleasure to welcome customers back to the library since its refurbishment in 2021. It has been lovely to see people enjoying the new books and the new layout and we have received some very positive compliments.

Over the Christmas period we ran a successful children's colouring competition which resulted in three winners, and it was great to see all the creativity that is out there in our young people. As soon as we are able to, we wish to start up our 'Bounce and Rhyme' time again and our games club which is enjoyed by many. This will be in addition to our book groups which run from the Library too. Please do come in and see us if you haven't already and meet the staff and have a look around. You will be very welcome.

Anne Woodberry

mardenlibrary@kent.gov.uk

Kent Libraries are holding a consultation on their services to help shape a new Kent Libraries strategy. Engagement closes on 7th March. Check out: bit.ly/KentLibConsult

Footpath between The Parsonage and Windsor Meadow

Redrow have now agreed this footpath will be named in memory of Trevor Simmons who was a long-time resident of Marden and farm worker on The Parsonage land. A commemorative bench and plaque will also be placed along the path.

Closure of High Weald Academy

Cranbrook & Sissinghurst Parish Council is initiating a campaign to get the High Weald Academy reopened.

They are looking for active groups of concerned parents/grandparents, teachers, PTA's, governors and parish councils who can help put together a fact-based argument to take to the Department of Education. This will be based on numbers of children coming through the pre-schools and primaries now and in the future. This will depend on data on the number of houses recently built and planned to be built and hence the potential number of children to be sent to a new Free school, run by experienced staff. They have contacts with people who work in the Department on Free schools who will help put the educational argument together. But first they need 'people power' to rise up and be counted.

KCC have said they have had no say in the closure, so hopefully they will get on board too. If you are interested in becoming part of the campaign, please email: reopenwealdenschool@gmail.com

WHAT'S GOING ON IN MARDEN?

There's going to be so much going on this Summer in Marden and great to get our vibrant community engaging again and the village groups being able to arrange activities.

A very warm welcome to all new residents who have recently moved to the village. There's always plenty going on and we hope you will all be very happy here in our friendly community. Our Village Welcome Pack can be found here:

<https://bit.ly/VillageWelcomePack>

The Rude Mechanicals

Wednesday 15th June in Southons Field at 7.30pm

Once again the amazing 'Rudes' are planning to return to Marden to perform 'Gods and Dogs' on Wednesday 15th June in Southons Field. 'Gods and Dogs' is a new comic dystopian allegory set in 2084 on the fictitious island of Abatine in a world where people are either glamorous or slobbering dog-like followers of them gripped to their 'telepafones' – it should be hilarious. For more information, please check out: <https://www.therudemechanicaltheatre.co.uk/>

You can book your tickets online:

<https://app.etickets.to/buy/?e=18994>



Marden Celebrates the Queen's Platinum Jubilee Celebrations

The Parish Council are working on plans to celebrate the Queen's Platinum Jubilee. The celebrations will kick off on Thursday 2nd June in Southons Field from 7.30pm where along with the rest of the nation we will be lighting our beacon at 9.45pm to commemorate this momentous occasion. On Saturday 4th June from 2pm-6pm in Southons Field, we will be holding a big traditional Village Fete where our community can come together and have some fun with friends and family. Please save these dates in your diaries and we will be sharing more information on what we are planning in the coming months.

Little Fishes Baby & Toddler Group

Little Fishes is a new baby and toddler group running in the Vestry Hall every Wednesday during term time between 9.30am and 11am. All parents and carers are welcome to go along with their little ones. There's no need to book just turn up when you are able to. Suggested donation for each session is £1. For more info, please email Kathy:

office@mardenchurch.org.uk or Rev Nicky: rev.nickyharvey@gmail.com
They look forward to meeting you.

WHAT'S GOING ON IN MARDEN? CONTD

Marden Art Club

The Art Club continues to flourish at Claire Dominic's studio at Mill Farm and meetings take place weekly (allowing for usual school holidays) with a variety of projects and mediums being used. It certainly makes you tackle subjects that you normally wouldn't, which is challenging and satisfying (when it works!). As Spring approaches, subjects will alter and hopefully some outdoor work can be undertaken. For more info call Mo on 01622 831529.

Mo Clayton and Vera Kelly

Marden Bowls Club

Marden Bowls Club continues to welcome new players who would like to try their hand at the indoor short-mat version of our game. Just come along on a Monday, Tuesday or Thursday afternoon just before two o'clock for some fun and gentle exercise. If you've never played before, we'll help you get started. We just ask you to bring a change of flat-soled shoes (slippers) to protect the playing mats. We have a cup of tea or coffee halfway through and finish at 4:30pm. If you want to know more, ring Malcolm on 01580 892746. Meanwhile members of the club remain busy maintaining the facilities ready for the summer season. Work on the green never really stops during the winter months as it still requires the occasional cut

and aeration. The major project for this year has been replacing the wooden bank on one side of the green as the 25 year-old sleepers were found to be rotting. Over the last two weeks the hedges around the green have also been cut back.

Mick Collins



Marden Church

The church is open for our normal pattern of services. While some restrictions are in place it's lovely to be able to worship together in person. We continue to live-stream regular services during the week for those unable to attend. The church is also open each day, for anyone who would like to spend some time in reflection or prayer. Do keep an eye on the church website www.mardenchurch.org.uk and Facebook page @churchinmarden for our services and events. Messy Church is for all ages and explores a theme or Bible story through art, craft, and activities. We have a short act of worship too and then we have tea. If you would like to receive our weekly newsheet, please email office@mardenchurch.org.uk.



Marden Community Events Working Group

Due to the Friends of Marden Heritage dissolving as a group, there will no longer be a Marden BIG Musical Picnic. We would like to thank them for bringing this well loved annual event to the community. The purpose of this new group will be to bring events such as this to the village and to fundraise for different village groups, organisations and projects - our first being more Christmas Lights in the village. A Committee has been formed and will be meeting in March for the first time. If you would like to offer your help at an event and join a great group of volunteers, head over to Facebook and like our page or join the Volunteer Group. Alternatively, you can email us mardenevents@outlook.com

Rachel Gillis-Coates

Marden History Group and Heritage Centre

We're back in business! The Heritage Centre opened again on Tuesday 1st February after being closed for nearly two years as a result of the Pandemic. During that time the Library, in which the Centre is situated, has seen a refurbishment which is still in the process of being completed.

The Heritage Centre will now be regularly open on Tuesday, Wednesday, Thursday and Friday between 10.30am- 12.30pm and 2.30pm-4.30 pm, as well as 10am-12pm on Saturday mornings. There will be Heritage Centre volunteers on duty in the afternoons and Saturday morning. You may well see one of our volunteers working in the Centre during weekday mornings and you can always approach them for any assistance or just to browse the displays. If you are doing specific research you think the Centre might have information on, we would ask that you make an appointment, so that any relevant information can be put out ready for you. In the meantime, we look forward to meeting everyone once again. You can check out the website:

<http://www.mardenhistory.org.uk> or email: history@mardenhistory.org.uk and Facebook page:

@MardenHistoryGroup

Lesley Mannington

Chair

Marden Horticultural Society (MHS)

Our website:

www.mardengardeners.uk continues to flourish with many informative articles on a wide range of gardening and wildlife topics, plus news and information of our programme and entries in our Traders section from local companies. If you are a local garden related trader, contact us for details of advertising.

MHS (Contd)

If you're not a member, you can keep up-to-date with all our news by subscribing to our free monthly email newsletter - sign up at the bottom of our web page where you can also enquire about joining MHS. The topic of our November talk was "No Dig" by Harry James of Rosewood Acres Farm near Canterbury which raised a lot of discussion. We have a superb list of speakers for 2022 ranging from The Secrets of Hever Castle, The Gardens of Rochester Cathedral, The Royal Botanic Gardens of Kew to Gardening Without Plastic. Trips being planned are to see snowdrops in February, The Spring Show at Loseley Park and Walmer Castle. Our Annual Plant Sale at the Vestry Hall is 14th May. This is always a great success and gives us an opportunity to interact with the growing number of gardening enthusiasts in the village.

Sue Pennicott
Chair



Marden in Bloom

The 25,000 daffodils Marden in Bloom have planted around the village are bursting into bloom and signals the start of Spring. As William Wordsworth wrote "Then my heart with pleasure fills and dances with the daffodils". The planters in the Summer will have a red, white & blue theme to tie in with the Queen's Platinum Jubilee.

We are planning some event/fund-raisers including a Summer Plant Sale in June and another Scarecrow Safari late September. Garden Safari - Saturday 25th/Sunday 26th June (date tbc) - if there are any residents who would like to open their garden, please can you let us know, but preferably within walking distance of the village. The Safari will finish in Southons Field for refreshments. We always need help with our projects, so if you can spare a little bit of time, please email:

anne.boswell@ymail.com or call on 07828 868703.

Anne Boswell & the "Blooming" Team

Marden Men's Breakfast

Our Men's Breakfast will be back again on Saturday 12th March starting at 8.30am at The West End Tavern. Our guest speaker will be Mo Gillis-Coates - entrepreneur, musician, thespian and well-known resident and enthusiastic supporter of Marden. You can book by contacting Geoff Burr on 01622 831106/07973 118241 or email: geoffreyburr@btinternet.com The cost of the breakfast is £8.

Marden Minors Football Club - Shout Out for Players

Veterans

Marden Minors Football Club is looking to recruit veteran players who need to be 35 years old+. They play in the NRG Kent County league and games are on Saturday afternoons kick off at 2pm (home games at Marden Playing Field).

Under 15's

The under 15's squad is currently full. However, if there's enough children interested of the same school year/age and there's a willing volunteer to help run a team, they can look at entering a team/s into the Maidstone League. Help, training and guidance will be provided throughout the set up and beyond. Please contact Chris Price on 07799 419743 if interested.

Marden Motor Show – Saturday 28th May in Southons Field

Marden Motor Club will be holding their 3rd annual Motor Show on Southons Field on Saturday 28th May and, as before, the Show will be open to the public from 1.00pm. This year the Club hopes to have 200 vintage, classic, sports and super cars, as well as several motorbikes, on display and if you have an interesting car you would like to be included, please contact Nick Ferguson-Gow at motorshow@mardenmotorclub.org to register your interest. Please note that to comply with Marden Parish Council regulations, no dogs except Assistance dogs will be allowed on the Field.

The Club currently has a core membership of about 25 people and we would welcome any new prospective members with an interest in motoring/cars etc. to come along to The West End Tavern on the first Tuesday of the month at 8.00pm and join us.

Nick Ferguson-Gow

Marden Russets Hockey Club

Marden Russets Hockey Club are delighted to be partnering with EVO Hockey to deliver world-class coaching camps and hockey academies. This is part of their plans to develop the youth section of the club. This is an ideal time for juniors to get involved and enjoy the exercise, fresh air and camaraderie - have a couple of taster sessions (sticks can be borrowed). EVO have a reputation for world-class hockey camps and academies connecting young players with some of the top international players and most creative coaches in the world including Olympic medallists, World Player of the Year winners and more. EVO focuses on individual player creativity, technical and skill development. Their camps and academies have been designed with sport psychology input to maximise player enjoyment, learning and development. EVO events are a unique opportunity to learn from and be inspired by some of the best around.

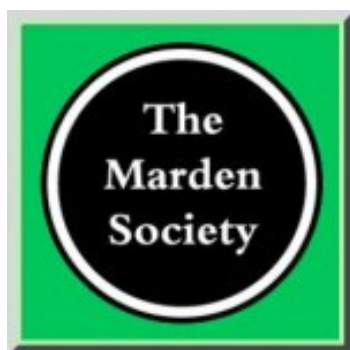
To find out more, please visit www.mardenchc.co.uk/hockey
Marden Russets welcome new members of all ages: those new to hockey and the 'rusties' (boys and men especially currently). With 8 Men's teams and 4 Ladies team + 400 juniors, all abilities are catered for. Interested to find out more about joining then contact: membership@mardenchc.co.uk

Marden Society

Our AGM in January was well attended and Steve McArragher took over from Mo Clayton as Chairman, with Carol Hogg as Secretary. We have planned a full programme of talks this year and hope that Covid will allow us to hold them all.

On 23rd March: Geoff Lewry will speak on "Anti-terrorism at Scotland Yard".
On 27th April we will hear that "A Policeman's Lot can be an Interesting One" from Neil Sadler. Neil spent 30 years as a Police officer in various ranks across Sussex and abroad. Next on 25th May we have "Sentinels of the Sea, the Amazing History of Lighthouses" by Mark Lewis. Membership costs only £5 and all meetings are free to enter and start at 7.30pm in the Vestry Hall, followed by refreshments. Finally, our Summer Outing on 22nd June will be to Provender House near Faversham, home of Princess Olga Romanov, who is the niece of the last Russian Tsar. She is an interesting character and has been seen recently in an ITV series called "Keeping up with the Aristocrats". For more information contact steve.mcarragher@btinternet.com or 07946 532591.

Steve McArragher



Marden Theatre Group

The Last Tango In Little Grimley and Last Panto in Little Grimley

We will be presenting two linked plays in April with the trials and tribulations of a struggling AmDram group.

A local Club's desperate group of actors realise their failing theatre is faced with a grim future so they choose to put on a play in a state of panic. "There's only one thing that sells tickets these days" says Gordon the Chairman. "Sex!" Thus begins the chaotic and hilarious build-up to an evening of extraordinary home-grown drama. Follow their fortunes as they try to stage a daring comedy followed by a racy pantomime. Could this be the end of their society? Don't be too sure. It's never over until the fat lady sings. This play encompasses cut throat sarcasm and FULL NUDITY... or does it? If you love watching cheery, thigh-slapping comedy classics from the golden era of British TV then this very British style of comedy theatre will be right up your street. Join us 7th - 9th April at the Memorial Hall for a fantastic evening's entertainment. For the latest information or if you are interested in anything amateur dramatics then email us on secretary@mardentheatre.co.uk or find us on Facebook [@mardentheatre](https://www.facebook.com/mardentheatre).

Mo Gillis-Coates

Marden Village Café

All are welcome to go along and enjoy a cuppa and cake every Friday at 10am in the Vestry Hall. This is organised by the Parish Church.

Marden Walking Group

If you are interested in exploring Marden and the surrounding countryside, Marden Walking Group has produced six guides to walks around Marden and six more are about to be published. These guides follow designated footpaths and also include points of interest and are available to purchase from The Farm Shop, No 47 and the Library. Marden Walking group also hold regular walks every Saturday starting at 2pm from the Library and are short walks of approximately an hour.

Once a month on the first Sunday there are longer walks and start at 10am from the Library and are between five to seven miles in length. These often follow a route from the published guides. During the Spring and Summer months, once a week a section of a long-distance pathway is walked. The section covered is approximately 8 miles. So far, the group has completed the Saxon Shore Way, in both directions, the Weald Way, the Tunbridge Wells Circular walk and the Greensand Way.

If you enjoy walking in a friendly social atmosphere, please contact either Steve McArragher on 01622 831007 or Sian Burr on 01622 831106 - Remember always to respect the countryside and keep to the footpaths



MARDEN 2037?
A Vision for Marden

- What would you like the village to look like in 2037?
- What additional facilities and amenities do we need?
- How can I get involved in this forward planning?

We would like to seek as many views as possible from residents and businesses on the future of the village and wider parish.

Saturday 7th May 2022
Marden Memorial Hall
10.00am till 4.00pm
And why 2037? Come along and find out!

PARISH COUNCIL COUNCILLORS, CLERKS AND OTHER USEFUL NUMBERS

CHAIRMAN

Cllr Kate Tippet - 01622 832305
kate.tippet1@gmail.com

VICE CHAIRMAN & CHAIRMAN PLANNING COMMITTEE

Cllr Andy Turner - 07803 598813

CHAIRMAN FINANCE COMMITTEE & VICE- CHAIRMAN PLANNING COMMITTEE

Cllr Richard Adam - 01622 831673
mpc@tn12.uk

CHAIRMAN AMENITIES COMMITTEE

Cllr Anne Boswell - 01622 833351 / 07808 868703

VICE CHAIRMAN AMENITIES COMMITTEE

Cllr Jean Robertson - 01622 831331 / 07950 816370

PARISH COUNCILLORS

Cllr Chris Barker - 01622832305

Cllr Matt Besant - 01622 832305

Cllr Matt Burton - 01622 832305

Cllr Ian Newton - 01622 831832

Cllr Tom Stevens - 01622 832305

Cllr Theresa Gibson - 01622 832305

PARISH CLERK

Ali Hooker
Telephone: 01622 832305
Mobile: 07376 287981
Email: clerk@mardenkent-pc.gov.uk

DEPUTY PARISH CLERK

Rachel Gillis-Coates
Telephone: 01622 832305
Mobile: 07940 241333
Email: deputyclerk@mardenkent-pc.gov.uk

ADMINISTRATIVE ASSISTANT

Hollie Savory
Telephone: 01622 832305
Email: adminassistant@mardenkent-pc.gov.uk

BOROUGH COUNCILLORS

Cllr David Burton - 07590 229910
david.burton@burtons.uk.com

Cllr Annabelle Blackmore - 01622 833299
annabelleblackmore@maidstone.gov.uk

Cllr Claudine Russell
claudinerussell@maidstone.gov.uk

COUNTY COUNCILLOR

Lottie Parfitt-Reid - 07919 360000
lottie.parfittreid@kent.gov.uk

MEMBER OF PARLIAMENT

Helen Grant MP - 0207 219 7107
helen.grant.mp@parliament.uk

POLICE COMMUNITY SUPPORT OFFICER

Nicola Morris
Telephone: 101
<https://bit.ly/KPReportACrime>
<https://bit.ly/KPRuralCrime>

COMMUNITY WARDEN

Mira Martin
Mobile: 07969 584179
Email: mira.martin@kent.gov.uk

BRITISH TRANSPORT POLICE

Freephone: 0800 405040
Text: 61016

FAULT REPORTING

Maidstone Borough Council
(for Flytipping, Abandoned Vehicles, Dog Fouling and
Street Cleaning
Telephone: 01622 602162
Website: www.maidstone.gov.uk/home/do-it-online/report-it

Kent County Council
(for Potholes, other Road Issues, Vegetation and Street
Lighting)
Telephone: 08458 247800
Website: www.kent.gov.uk

For regular parish information, updates and events, follow us on:



@MardenParishCouncil



@mardenkentpc



@mardenparishcouncil