

# The Kingsclere Tower



November 2022

Your Village Magazine

# The Kingsclere Tower

EDITORS: Mike Stokoe & Stephen Steare  
 ADVERTISING: Brian Elborn b.elborn345@btinternet.com tel 298704  
 DISTRIBUTION: Brian Elborn tel 298704  
 ASSEMBLY: Andrew Kitch tel 299743  
 PRINTERS: Kingsclere Design and Print  
 LAYOUT/COVER: Cathy Williams

---

On 11<sup>th</sup> November 1918 the Armistice between the Allied and Central Powers was signed, silencing the guns of World War I effective at 11 am – the 11<sup>th</sup> hour of the 11<sup>th</sup> day of the 11<sup>th</sup> month. Over 8 million Europeans died in the war; millions suffered permanent disabilities.

Remembrance Sunday commemorates the sacrifice of British and Commonwealth military and civilian servicemen and women in both World Wars and in later conflicts. The traditional Remembrance Parade along Swan Street and Service will be on Sunday 13<sup>th</sup> November, see the Parish Council and Church pages for more information.

On a lighter note, this edition is packed with information and notices about numerous local events occurring in November and December in the run up to Christmas. Make the most of living in our wonderful village.

## The Editor

Neither the Editors nor the Management Committee accept responsibility for the opinions expressed or the goods and services advertised in the Kingsclere Tower magazine. The Editors reserve the right to omit, amend, or condense any item submitted for publication.

### **To all “Tower” Contributors**

**Copy for December 2022/January 2023 to the Editor at:**

**kingscleretower@gmail.com**

**NOT LATER THAN 12<sup>th</sup> November 2022.**

If possible please submit articles as a MS Word document, A5 page size, font Times New Roman 11, single spacing. *If email not possible, post to:*  
 23 Swan Street, Kingsclere, Newbury RG20 5PP.

**Will ALL contributors please include full name  
 and contact phone number/email address.**

# Kingsclere Parish Council

**Chairman:** Cllr Clive Mussett (07800 022432)

**Email:** [clerk@kingsclere-pc.org.uk](mailto:clerk@kingsclere-pc.org.uk)

**Telephone:** 01635 298634

**Office:** 37 George St, Kingsclere RG20 5NH



**THANK YOU** - Thanks to everyone involved in the organisation of various things which enabled residents to mourn the loss of the Her Majesty the Queen. From the Condolence Book and the additional services, to the social media information and the Lamp Lighting. The plan we had as a village came together very successfully and seamlessly. There was much work which went on behind the scenes though. We will be composting the flowers and aim to plant a Memorial Tree this autumn.

Huge thanks and appreciation also to Trevor Pitman and Sarah Ball who have been the village Tree Wardens for a long time, their enthusiasm and knowledge has been of great value to us all. We wish them well for the future. We are still looking for someone to come forward to help with the Trees and Wildflower Meadows.

**COUNCILLOR VACANCY** – At the time of writing this there is currently a councillor vacancy on Kingsclere Parish Council. Being a councillor is a great way to give back to the community and help develop our wonderful village. Seeing Kingsclere change for the better, because of decisions you have helped make, is something that can give you a sense of achievement and pride.

**2023 PARISH COUNCIL ELECTIONS** – Elections are held for town and parish councils every four years. The next local elections will be held on the Thursday 4<sup>th</sup> May 2023. People stand for election for many reasons, but the aim should be to:

- Work to identify issues which are important to the lives of the residents you represent
- improve the quality of life and the environment in your area
- influence and shape the long term development policy for the parish
- work to bring about improvements through local projects, lobbying other service providers and working in partnership with other parishes and agencies

Democratic local government is all about local people getting involved in the issues affecting their community. KPC would be delighted to hear from interested candidates in the coming months so informal discussions about the role can take place and you could potentially come along to few meetings to get an idea of the projects and commitment involved. For more information, please contact the Parish Clerk at [clerk@kingsclere-pc.org.uk](mailto:clerk@kingsclere-pc.org.uk).

**GREEN WHEELY BINS & GLASS RECYCLING** – The collections dates are Wednesday 16<sup>th</sup> and 30<sup>th</sup> November, and then 14<sup>th</sup> December 2022.

**PLANNING MATTERS** - The 5G Mast has been rejected currently, the Care Home was also turned down. Thanks to our B Cllrs who were very involved and strong at the meeting in questioning this application.

**ROAD CLOSURE - REMEMBRANCE SUNDAY 13<sup>th</sup> November** –The Parish Council has applied for the temporary road closure again this year in the center of the village for the Remembrance Parade along Swan Street and the Silence at 11am. We respectfully ask motorists to be mindful of this from 10.45am.

**NEXT PARISH COUNCIL MEETING**– The next full Council Meeting will be at 7:30pm on Monday 28<sup>th</sup> November 2022, in the Village Club. We welcome the attendance of all parishioners at our meetings and anyone who wishes to raise any matters of concern will be given the opportunity to do so during Public Questions.

The Parish website: [www.kingsclere-pc.org.uk](http://www.kingsclere-pc.org.uk)



@kingsclerepc



[facebook.com/KingsclereParishCouncil](https://facebook.com/KingsclereParishCouncil)

## Police Report



**HAMPSHIRE**  
CONSTABULARY

We work hard throughout the year to engage with communities to encourage people to report hate crimes to us. The National Hate Crime Awareness Week (NHCAW), a national week of solidarity with those affected by hate crime, took place between 8<sup>th</sup> and 15<sup>th</sup> October. Each police district ensures they understand the picture of reported hate crime because this may be an indicator of community tension and intolerance. We also work with the Office of the Police and Crime Commissioner to promote the development of third-party reporting centres that provide an option for people to report hate crime without needing to call the police directly. The centres are also then able to provide additional support to victims. This year's focus:

- **Hate crime awareness** – running awareness events to increase public knowledge.
- **Operational responses to hate crime** – encouraging people to think about how they would respond if hate crime happened to someone they know.
- **Preventing** hate crime where possible.
- **Empowering** communities to report hate crime and work together.

Our policing priorities relating to hate crime are – Educate, Report, and Support. We want to educate our communities as to what hate crimes are and why it is so important to report it. We also want to focus on our own workforce to help and support you. We are identifying organisations and charities that work with people with protected characteristics. This will help our senior leaders to open up a dialogue with these partners to understand the challenges that they face.

**PCSO Joshua Revett** [joshua.revett@hampshire.police.uk](mailto:joshua.revett@hampshire.police.uk)



## Kingsclere Neighbourhood Plan

On 27<sup>th</sup> September, the Borough Council's Cabinet took the decision to delay publication of the consultation of the Local Plan review. The Cabinet unanimously agreed that the standard method of calculating the number of new homes for the borough was flawed, leading to too high a figure of around 17,000 new homes, which is not sustainable for the borough. The Borough Council have made a strong case to Government regarding this allocation and it was agreed that until this issue has been resolved, publication of the Local Plan consultation should be delayed until the autumn of next year. Whilst accepting the case against the allocation of housing given to the Borough, the delay means we are unable to comment on all proposed changes i.e., to help combat the climate emergency, local green spaces, biodiversity etc. Until we know proposed changes to policies in the Local Plan, we cannot update policies in our Neighbourhood Plan. This delay, coupled with B&D's inability to meet their 5-year housing land supply target, means we remain vulnerable to speculative development, as current policies in both the Local Plan and our NP become out of date and do not carry as much weight.

In light of the above development, the NP Group took the decision to continue with a site selection assessment and housing needs assessment only, for which we are receiving free consultancy support. We have also received a small grant and are in the process of compiling a questionnaire for residents so that we can obtain your opinion on what changes are needed to our NP. This will be an on-line questionnaire but paper copies will be made available. Our intention is to publish this within the next couple of months. Please keep checking the Parish Council website and Facebook for further information.

The proposed care home on the Fawconer Road site was rejected by the Development Committee at B&D. This means our NP policy for at least 12 homes on this site still stands. We have no further information on the developer's intentions. The agent representing the owners of the Strokins and Coppice Road sites have asked to meet with the Parish Council. Hopefully we will have some news on these sites shortly.

**Cllr. Sue Adams** [Cllr.sue.adams@kingsclere-pc.org.uk](mailto:Cllr.sue.adams@kingsclere-pc.org.uk)



## Christmas Community Event A Christmas Carol Audio Show

Village Club, 7pm on Friday the 9<sup>th</sup> December

*Kingsclere Singers*

Charity donation of £5 includes food. Drinks available for purchase.

The Kingsclere Players in partnership with the Kingsclere Singers have created a special audio edition of 'A Christmas Carol'. The recording brings to life the famous Charles Dickens story of Ebenezer Scrooge who is haunted by three ghosts to help him find himself and reconnect with the true meaning of Christmas. We are inviting the community to join us for an evening for food, drink and enjoying listening to this fantastic show!

**This is a charitable event with donations to Target Ovarian Cancer.**

Please pre-book your ticket on Eventbrite so that we can get a count for food! Donations and entrance welcome on the day, but we would like to get an indication of attendance ahead of time.

<https://www.eventbrite.co.uk/e/kingsclere-community-christmas-event-and-a-christmas-carol-audio-show-tickets-440780685897>

## Kingsclere Players Productions

### CLUEDO!



**Ship Inn Arts Centre in Ashford Hill, 18<sup>th</sup> and 19<sup>th</sup> November, 7 pm.**

Tickets from [shipinnarts.org](http://shipinnarts.org) for £12. Limited tickets available.

The Kingsclere Players are transforming the Ship Inn into 'Boddy Manor' with an immersive version of the game Cluedo to transport the audience into the game as a full production. No audience participation... just a whole load of fun. This hilarious spoof, will keep you guessing as you try to work out whodunnit.... with what... and where!

When Miss Scarlett, Professor Plum, Mrs Peacock, Mr Green, Mrs White and Colonel Mustard arrive at a party, they are surprised to find they have all received the same invitation from Lord Boddy. It soon becomes clear that they all have secrets and the mystery and hysteria grow when the inhabitants of Boddy Manor are killed off with a variety of familiar weapons. Was it Miss Scarlet, with the revolver in the dining room, or was it Professor Plum, with the lead pipe in the library....?



**The Fieldgate Centre**  
Kingsclere Community Association  
Your community, your place

### Improvements: Saving Sunshine for a Rainy Day

Work is underway to install solar panels and battery storage, made possible by our own fundraising efforts and grants from Garfield Weston Foundation, Greenham Trust and Sovereign Housing. This will enable significant energy saving and reduce our carbon footprint for the future. Recent improvements to the interior include new corridor flooring and new carpet tiles in the Atkinson Room.

We have ideas for many more projects, partnerships, and initiatives to support our community; if you would like to help us with a donation of your time, or money, please contact us.

### Events News

If you would like to hear event news ahead of the crowd, send us your email and we'll keep you up to date.

### Race Night

A great atmosphere and a brilliant audience helped to raise £1500 (including match funding). Thank you to our sponsors, volunteers, and Lambourn Race Nights.

### November

**Sun 6<sup>th</sup> Greener Kingsclere Christmas Market 10am - 12.30pm.**

In partnership with KCA. (See opposite page).

**Sun 13<sup>th</sup> Ceroc – Classic Workshop 1.30pm - 4.30pm.**

Beginner Plus to Early Intermediate.

**Tue 15<sup>th</sup> Monthly Meet Up 2.30pm - 4.30pm.**

All welcome for tea, cakes, chat and more.

**Fri 25<sup>th</sup> Baby Talk Workshop 10am - 11.30am.**

Free event run by Hampshire Healthy Families. To book a place please go to our website, or facebook page, for the link.

### Christmas Entertainment in December

**Sat 10<sup>th</sup> Nathan's Christmas Cabaret 2.45pm & 6pm.**

An evening of festive song and fun with AVA, NLS Tuition and their West End friends. (See opposite page). Tickets on sale now at:

[www.ticketsource.co.uk/kingsclere-community-association](http://www.ticketsource.co.uk/kingsclere-community-association)

**Fri 16<sup>th</sup> Yule Sing 7.30pm.**

Christmas Sing Along with the Kingsclere Singers.

**Call soon to book your Christmas party!**

email: [fieldgatecentre@outlook.com](mailto:fieldgatecentre@outlook.com)

telephone 01635 298497

[www.thefieldgatecentre.co.uk](http://www.thefieldgatecentre.co.uk)

The Fieldgate Centre is run by Kingsclere Community Association, as a charity (No 1168366). The association is made up of volunteers who rely on the support and participation of the community.

## Christmas Market Sunday, 6<sup>th</sup> November 10 - 12:30 at the Fieldgate



Even more stalls than ever! Come along and purchase – Coffee \* Sweet and Savoury Snacks \* Honey \* Gifts \* Pet Shampoo \* Jewellery \* Christmas Decorations, Cards and Wrapping \* Refillable Pantry and Cleaning Products \* Beauty & Personal Products \* Household Items \* Wooden Food Boards \* and more added daily!

\*Market in partnership with the Kingsclere Community Centre.

There will also be a company with information about solar panels.

**Recycling** at the market: Batteries (not car), Medicine blister packs, Plastic Milk Tops, Inkjet Cartridges (originals only, not compatible or laser), Bras, Eyeglasses.

**NEW!!** Now you can **recycle your medicine blister packs** at Kingsclere Surgery! Empty packs only, please.

**Coming in January – Kingsclere Repair Cafe!** Can you fix, mend or put back together clothes, toys, furniture, electrical equipment, household or garden items, or anything else? Contact us if you'd like to volunteer!

**Nicki, Sarah & Lucinda** [greenerkingsclere@gmail.com](mailto:greenerkingsclere@gmail.com)  
[www.Greener-kingsclere.co.uk](http://www.Greener-kingsclere.co.uk)

## Nathan's Kingsclere Christmas Cabaret Is Back!

If you fancy festive fun and entertainment with a free glass of mulled wine come on down to the **Fieldgate Centre** on **Saturday 10<sup>th</sup> December at 2.45pm and 6.00pm**. This year's West End singers include Laura Pick from *Wicked*, Rohan Richards from *Dreamgirls* and Kingsclere's very own Kelly O'leary from *Les Misérables*.

Get your tickets (Adults: £12.00, Children: £6.00) at:

[www.ticketsource.co.uk/whats-on/field-gate-dr/the-fieldgate-centre](http://www.ticketsource.co.uk/whats-on/field-gate-dr/the-fieldgate-centre)  
or scan the QR code:



Join in our raffle with wonderful prizes including West End theatre tickets, Spa treatments and many more. This year all profits will be donated to **Action for M.E.** in support of local people who suffer with this disease. Last year we managed to raise nearly £1250 for Target Ovarian Cancer, this year we hope to do even better.



## Kingsclere Twinning Association

“Would I Lie to You?”

A Wine Tasting Challenge for all to enjoy!

Saturday 19<sup>th</sup> November, 7.30 p.m. at the Village Club



Come for a friendly and convivial evening, to sample some wines and see whether you can spot truth from lies with our panellists, with prizes for the winning palates!

Two course hot supper is included as well as the wine tasting, and cash bar also available. Raffle tickets will be sold to win a Magnum of Champagne!

All are welcome: Tickets are £15 for members, £17.50 for non- members. Contact [kingscleretwinning@yahoo.co.uk](mailto:kingscleretwinning@yahoo.co.uk) for tickets or further information

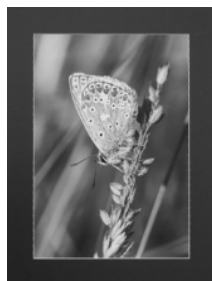
## Kingsclere Photo Club

### \*\*EXHIBITION RESULTS\*\*

Thank you to everyone who saw our recent exhibition, we hope you enjoyed the show!

The photo most voted as the ‘favourite picture’ was ‘Common Blue’ taken by Tony Matthews.

The winner of the portrait raffle kindly donated by M.O.L. PHOTOGRAPHY was Sylvia Pennington. Congratulations to her and thank you to everyone who had a go!



### 2023 CALENDARS

Our super 2023 calendars are on sale, available while stocks last from MOL Photography (mornings only Thursday - Sunday) and SPAR Kingsclere (Swan Street Stores) at just £6 each, and make ideal gifts!

### FORTHCOMING MEETINGS

At the Village Club (Main Hall), George Street, 7.15pm for 7.45pm start:  
**Weds 2<sup>nd</sup> November** ‘Narrative Challenge’ review, followed by critique.  
**Weds 7<sup>th</sup> December** AGM and ‘Best Photo of 2022’ competition.

For more club information, see our website [www.kingsclerephoto.org](http://www.kingsclerephoto.org) or email us at [kingsclerephotoclub@gmail.com](mailto:kingsclerephotoclub@gmail.com)

## Kingsclere Community Library



Thank you to everyone who made our GIANT Book Sale a huge success! It was a team effort, that many people from the village and beyond enjoyed. Bigger than ever before, we raised more money than ever, too.

**Remember:** Joining and borrowing books is absolutely FREE! We also have a public computer for your use, jigsaw puzzles to borrow, and a printer/photocopier that you may use paying per page.

**Young Adult Books** We are expanding this section soon! If you are a tween or teen and have authors or subjects you’d like to see in the library, please email and let us know! We want YOUR ideas.

### \* NEW library programme: Share a favourite passage \*

Would you like to share your favourite poem, paragraph, recipe.... with another few keen readers, by reading it aloud in the library? Do pop over on Tuesday November 22<sup>nd</sup> or 29<sup>th</sup>, between 3:30 and 4:30 pm, with your chosen text, or pick one in the library. No booking necessary.

**HOURS** Tuesday & Thursday 1.00pm - 5.30pm  
 Saturday 10.00am - 1.00pm

Nicki Lee, [Kingsclerelibrary@gmail.com](mailto:Kingsclerelibrary@gmail.com) [www.kingsclerelibrary.co.uk](http://www.kingsclerelibrary.co.uk)  
 Library phone number: 01635 297464



## Kingsclere Film Club

Saturday, 12<sup>th</sup> November 2022 at 7.30pm  
 Kingsclere Village Club, George Street  
 Doors open at 7.00pm.

### The Big Sleep

(1946 - A - 114 minutes)

*Private detective Philip Marlowe is hired by a wealthy family. Before the complex case is over, he's seen murder, blackmail, and what might be love. Stars Humphrey Bogart & Lauren Bacall.*

Next month: **Saturday, 10<sup>th</sup> December, 2022 - Christmas Social**  
 (**Please pre-book by 1 December**) - Film - **Cat Ballou**

Kingsclere Film Club welcomes guests at £7.50, subject to space. New members welcome at any time.

For further information call:

**John Sawyer** (Chairman) 297221 or **Diana Tait** (Membership Sec.) 298494

## Save 24 Swan Street



### Kingsclere Performing Arts and Youth Centre

Discussions on Community Asset Transfer of 24 Swan Street are underway with Basingstoke and Deane Borough Council, a process supported by Borough Councillors and the Parish Council. Following the tremendous community support to save the site from residential development, protecting it as a performing arts centre and the new home for the Youth Club, an application from the Parish Council led to 24 Swan Street being registered as an Asset of Community Value. A charitable community interest company Kingsclere Performing Arts and Youth Centre CIC (KPAYC) has been formed to look after the facility for the benefit of the community.

A series of well supported fundraising events has provided a financial base for KPAYC to manage a Community Asset Transfer, CAT, arrangement. Advice from organisations across the country suggests that CAT can take some time. Further funds will be needed to enable the transfer and pay for building improvements. The rooms for the much-needed Youth Club have been identified including space for a homework/study area open from the late afternoon after each school day. Discussions have also been taking place with other community organisations about using 24 Swan Street for their activities.

Over 230 children and young people continue their training and education. Kingsclere Performing Arts College is now in its 6th year and has welcomed its largest intake so far since opening back in 2017. In partnership with local FE provider Newbury College, the centre is going from strength to strength having opened a new full time Acting course, to run alongside the Musical Theatre and Dance courses, and is maintaining its record of 100% progression into professional training routes for graduates. JLD continues to thrive after almost 31 years at 24 Swan Street, providing a full range of vocational qualifications and training for dance and drama students of all age groups. JLD is looking forward to a full school production taking place in July 2023. The car park provides essential space for a surprising number of cars supporting residents and businesses in the centre of the village. Many more young people in the village will benefit when the Youth Club sets up in its new home. Visit <https://www.kingsclerepayc.co.uk/> for more information.

Ian Bowes - 07711 771262 [info@kingsclerepayc.co.uk](mailto:info@kingsclerepayc.co.uk)

## The Church Pages



Dear Friends

As the clocks go back and the evenings draw in, the natural world offers us an opportunity to take the pace of life that little bit slower – should we choose to take it! At the end of October and the beginning of November are two significant occasions for remembering.

The traditions of the church invite us to mark All Saints' Day – an opportunity to remember with thanksgiving the saints who have gone before us and, within the Protestant tradition, the church universal. This is a significant day for looking back with more than nostalgia "for the old days". It is about recognising the gifts and legacy that we have inherited from our ancestors in faith and how that has shaped and informed who we are and how we express that faith today. In his second letter to Timothy, Paul writes this:

*"... Stand by the truths you have learned and are assured of. Remember from whom you learned them; remember that from early childhood you have been familiar with the sacred writings which have power to make you wise and lead you to salvation through faith in Jesus Christ."*

The second occasion for remembrance is Remembrance Sunday itself, when we rightly remember those who gave "their today so that we could have a tomorrow": those thousands of men and women across so many nations, the majority of them volunteering to serve their country and who died in a cause they believed in. It seems to me that the significance of this day is changing with the years. For those who have never experienced living in a country threatened by imminent invasion; those serving in the armed forces as a career choice rather than through conscription; and those who have been brought up to challenge the power and decisions of government, the emphasis perhaps shifts to acknowledging the complexity of the world situation in which we live and no longer recognises a simple right and wrong.

It is also appropriate, I believe, to remember the numerous men, women and children who die every day from lack of clean water, fresh food and preventable disease. Whatever our personal views about defence spending and this country's involvement in armed conflict, it is appropriate to both remember and pledge ourselves to 'a life of love in action' and to live as peacefully as possible with our fellow human beings.

Peace

*Rachel*

**Rachel Borgers**  
Methodist Minister

## St Mary's Church

### Worship in our Churches

#### November



Services in our churches will be as follows:

Thur 3 <sup>rd</sup>		Morning Worship 10.30am St Mary's, Kingsclere	
Sun 6 <sup>th</sup>	Holy Communion 9.30am St Peter's, Headley	Holy Communion 10.30am St Mary's, Kingsclere	
Thur 10 <sup>th</sup>		Morning Worship 10.30am St Mary's, Kingsclere	
Sun 13 <sup>th</sup>	Remembrance 10.50am St Paul's, Ashford Hill	Remembrance* 10.50am St Mary's, Kingsclere	Remembrance 3pm St Peter's, Headley
Thur 17 <sup>th</sup>		Morning Worship 10.30am St Mary's, Kingsclere	
Sun 20 <sup>th</sup>	Morning Worship 9.30am St Paul's, Ashford Hill	Morning Worship with Baptism 10.30am St Mary's, Kingsclere	
Thur 24 <sup>th</sup>		Morning Worship 10.30am St Mary's, Kingsclere	
Sun 27 <sup>th</sup>	Holy Communion 9.30am St Paul's, Ashford Hill	Morning Worship 10.30am St Mary's, Kingsclere	

[www.stmaryskingsclere.co.uk](http://www.stmaryskingsclere.co.uk)

## Kingsclere Methodist Church

### Services for November

Sun 6 <sup>th</sup>	Worship Leaders
Sun 13 <sup>th</sup>	Rev Roger Larkinson (joint service at St Mary's for Remembrance Sunday) - see above*
Sun 20 <sup>th</sup>	Rev Rachel Borgars
Sun 27 <sup>th</sup>	Rev Ruth Metcalf

**Services start at 10am** (except for 13<sup>th</sup> November\*). All are welcome  
Coffee morning every Thursday 10.30am - noon.  
Our Hall is also available to hire; see back cover for further details.

**Christine Westcombe** email [c\\_westcombe@hotmail.com](mailto:c_westcombe@hotmail.com)

## Lighting up St Mary's

The sight of St Mary's Church when it is floodlit is truly beautiful. Many people sponsor these lights (£12 per evening) to celebrate an occasion, such as a birthday, wedding, anniversary, christening, or some other special day in their lives.

To book, contact Emma, our Church Administrator on **07422 687125** or email: [administrator@stmaryskingsclere.co.uk](mailto:administrator@stmaryskingsclere.co.uk)



### November

- 11<sup>th</sup>** Kingsclere's oldest resident, Maisie Phenix, achieves the grand age of 104 on 11<sup>th</sup> November, and her family are delighted to mark the momentous event by illuminating St Mary's Church for the occasion. Maisie has lived in the village since the late 1940s and has been an active member of the community, particularly in her involvement with the local Red Cross detachment, various fund-raising initiatives, and generally being a good neighbour to one and all. She continues to help others by making crochet blankets for Project Linus.
- 23<sup>rd</sup>** Dearest Eileen... Until the Day Breaks and the Shadows Flee...  
With Love as Always, Anne & Bill xx
- 24<sup>th</sup>** In memory of the late Sylvia Brooker on her Birthday, with love to my 'Other Mother'.

## Basingstoke Choral Society



### Handel's *Messiah*

*Messiah* is one of the most popular works in the choral repertoire. Basingstoke Choral Society will begin the Christmas festivities this year with a fabulous performance at **The Anvil** on **Sunday 27<sup>th</sup> November**. Come along and listen to favourites such as the *Hallelujah Chorus* and *For Unto Us a Child is Born*, accompanied by a baroque orchestra and outstanding soloists.

Tickets begin at £15, only £7 for under 16s and students, from the Anvil Box Office 01256 844244.

We're a friendly choir and are always delighted to receive new members, so please come along to our rehearsals on Wednesday nights at The Vyne School.

Check our website [www.basingstoke-choral.org.uk](http://www.basingstoke-choral.org.uk) or follow on Facebook.



## Friends of St Mary's Kingsclere Ltd

Our popular **Quiz Night** with Ploughman's Supper will now be on **Friday 3<sup>rd</sup> February** rather than as advertised in last month's issue.

### The FOSM 200 Club Monthly Draw ~ New Members invited for 2023 ~

Draws for the 200 Club, a Kingsclere lottery supporting the repair, restoration and renovation of our wonderful church building, start in January. A modest £12 subscription secures one numbered entry in each of twelve monthly Draws throughout 2023, with a £50 prize each month to the lucky winner.

Open to all, & additional numbers may be bought for £12, to increase your chance of winning. Our maximum membership is 200.

Enquiries to: 01635 297430 or email: jane.b.royle@gmail.com

**New members please apply by December to be in the 2023 Draws**  
**Existing members will be contacted separately**

**Peter Turner, Chairman**

For membership and other enquiries contact: fosmkingsclere@gmail.com



### FOSM 200 Club

The October Draw winner was Pam Evans – No. 98  
**Congratulations, Pam.**

Next month's Draw will take place at The Crown at approximately 7 pm on  
**Tuesday 1<sup>st</sup> November**

**Jane Royle jane.b.royle@gmail.com 01635 297430**

## St Mary's Church - Saturday Coffee

Freshly brewed coffee, tea and delicious homemade cakes.  
All welcome – please do pop in!

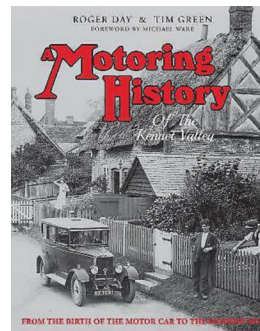
**November 5<sup>th</sup>, 12<sup>th</sup> and 19<sup>th</sup> 10.00-12.00** in the Kingsmill Room

Volunteers welcome – if you're able to pour coffee, welcome people or make cakes occasionally please do contact the church office on **01635 299528**.

## Kingsclere Local History Association

Our next meeting will be on **Thursday 17<sup>th</sup> November** when we welcome a return visit by local historian **Roger Day** who will present:

### "THE MOTORING HISTORY OF THE KENNET VALLEY"



Roger and his colleague Tim Green have spent some five years researching a book of this title which was published at the end of last year. Roger will give us a nostalgic account from the first motor cars and motoring businesses up until the modern era. He will include stories and photographs of local personalities and businesses which together make a fascinating insight into this historic field.

We meet at **Kingsclere Village Club** commencing at **7.30 pm** and visitors are very welcome at £3 pp.

**Michael Leah, Secretary 297403**

**Kingsclere & Headley Woodlands W.I.**  
Kingsclere Village Club, 35 George Street

**theWI**  
**INSPIRING WOMEN**

Our talk last month was by Jane Burrell about The Secrets of Ufton House. It certainly sounds as if the house needs further investigation; a visit is definitely on my bucket list! Also last month members enjoyed lunch in Newbury on one of our two monthly lunch outings. They also enjoyed meeting friends at the North Downs group meeting when we heard from Tom Way, a renowned wildlife photographer - hugely successful.

In November we will welcome back Cynthia Morris, who last year showed us how to make Christmas wreaths. This year she is demonstrating how to make Christmas table decorations, with members joining in if they wish. We so enjoyed her visit last year that it made sense to invite Cynthia back again.

As usual, we meet on the second Wednesday of the month:  
**9<sup>th</sup> November at 1.45 pm** in the Village Club in George Street.  
All visitors are welcome and we would love to see you.

**Margaret Geary, President tel 01635 297197**

## The Ship Inn Arts Centre

The Ship Inn Country Hotel, Ashford Hill, RG19 8BD

Please ring 01189 814504 for tickets as we have limited seating

**Friday 18<sup>th</sup> November & Saturday 19<sup>th</sup> November 2022 7pm**  
**CLUEDO On Stage!**

Based on the classic detective board game loved by generations, and performed by the Kingsclere Players, this hilarious spoof will keep you guessing as you try to work out whodunnit.... with what... and where! Jacket potatoes and fillings for refreshments. Bar will be open before, during and after the play. Tickets £12 from Eventbrite, or ring The Ship. (See page 5)



**Friday 2<sup>nd</sup> December 2022 7pm**  
**Talent at The Ship**

All welcome to come and take part; there will be judges to decide a winner of 3 age categories. £3 for entrants, £5 for a group. Audience tickets are £5. Please book tickets beforehand by ringing The Ship and then pay on door on the night. Light refreshments will be available, the bar will be open. Entrants need to enter by 4<sup>th</sup> November.

**Tuesday 13<sup>th</sup> December 11am – 2pm**  
**Make Your Own Christmas Decoration**  
 Homemade vegetable chilli and bread for lunch. £10 a ticket.

**Saturday 17<sup>th</sup> December 7pm**  
**Carols with Nigel and the Band**  
 Delicious cakes will be served. £10 a ticket.

## Kingsclere Sin<sup>g</sup>ers CHRISTMAS EVENTS

Christmas is just around the corner... Here are some dates for your diary!

**10<sup>th</sup> December 2022 4 pm – Yule Sing at St Mary's.** Traditional Christmas carols and songs. FREE, donations welcome for charity

**16<sup>th</sup> December 2022 7.30pm – Community Christmas Sing Along at the Fieldgate Centre,** in conjunction with Kingsclere Community Association. FREE, donations welcome for charity

Hope to see you there!

## KINGSCLERE VILLAGE CLUB Est. 1921

100 years and counting...

Charity 1189234



### CHRISTMAS MARKET



If you have been to one of our previous markets, you will know what high quality items our stall-holders offer. So don't miss **Sunday 4<sup>th</sup> December, 10am to 1pm.** A festive atmosphere, mulled wine and lots of lovely Christmas goodies for that perfect gift or a treat for yourself. Details of stalls on our social media pages.

### COMMUNITY CAFÉ

Want a bit of company in a warm place? Join us on **Saturday 26<sup>th</sup> November, 10am to 1pm** for a cuppa, cake and chat, with optional card making and a fun quiz. All welcome. Would someone you know like to come but needs transport? Contact us and we will do our best to help.



### SILVER CLAY WORKSHOP

Make your own silver Christmas gifts at an introductory Silver Clay workshop **December 11<sup>th</sup>, 10am to 1pm.** Ideal for beginners. Sufficient clay to make three or four pieces with basic jump rings, ear wire hooks and a standard 18" chain included in the £49 price. Places are limited so visit [www.silverclayacademy.co.uk](http://www.silverclayacademy.co.uk) for information and booking. Please note this workshop is in the Holding Room with access by stairs only.

### DATES FOR THE DIARY– two popular events returning!

- **Saturday 4<sup>th</sup> February 2023** Alison Neil's one-woman show of the life of Marie Curie. Always an amazing performance.
- **Friday 31<sup>st</sup> March 2023** ABB (Average Blues Band). Foot-tapping fun.

### AND FINALLY

A big thank you to all those who attend our classes, come to our events or support the clubs and societies that use our facilities.

**Helen 297390 or [events@kingsclerevillageclub.co.uk](mailto:events@kingsclerevillageclub.co.uk)**

<http://www.kingsclerevillageclub.co.uk> or [www.facebook.com/kingsclerevillageclub](https://www.facebook.com/kingsclerevillageclub)

### Robert Unwin

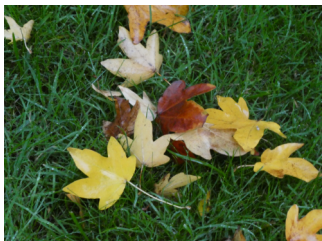
Robert died in October after a long struggle with dementia. He was such a kind, gentle loving man, we all miss him so much. There will be a service for his life at a later date.

I wish to send thanks to everyone who has been so kind over the last five years, especially neighbours and friends in Thornely and Fawconer Roads, for all your help and kind words during Robert's illness.

**Susan Unwin**

## November In The Garden

There are plenty of jobs to be done before the winter sets in. For those of us who have trees in the garden and nearby, gathering up the leaves is a necessary evil. If left they will encourage disease and insects, it also makes the garden look untidy. The worms will take care of a small amount, but most need to be raked up.



*Gather up leaves to tidy the garden*

Some plants will need protection from the frost. Plants such as penstemons and kniphofias can be protected with bracken and straw. A few years ago we visited Switzerland just after Halloween. The flower borders had been cut down and covered with small branches of Cypresses, which looked attractive and must be effective with the snow which they experience. Not sure it's practical in a large garden, but probably works in a small area.

The last of the tulips need to be planted by the end of the month; remember to give them plenty of grit for drainage so they do not rot away. Ponds will need to be tidied up, bird boxes cleaned out, some pot grown plants will need protection with sacking or bubble wrap. Ties and stakes on trees need to be checked. Brassicas need protection from the hungry pigeons. Brussel sprouts are ready for be harvested. Parsnips can be lifted; these taste better after they have had a touch of frost. Cauliflower curds need protection from going yellow which can be done by covering with bent over inner leaves. Dig over any vacant ground in the vegetable plot; avoid doing so if the soil is too wet.

New fruit trees can be planted, including blackcurrants, before the soil becomes hard with the cold. Start pruning apples and plums. Roses can be half pruned to prevent them from rocking in the wind. When the last of the jobs are done in the garden the tools need to be cleaned and oiled before being put away until the spring.

It is still possible to have color in the garden; there are many plants and shrubs that have colourful stems when the leaves have fallen. Plants still giving colour to the flower borders include sedums, smokebush, pyracantha, some rose hips, and the winter flowering clematis "Bill Mackenzie". There is also the winter flowering honeysuckle; it has a wonderful perfume.

**Denise Allen**

## Nature Notes

A sparrow hawk was taken by surprise on a local wooded footpath. It had attacked a very young woodpigeon and was just taking off clutching a good meal. The hawk dropped its prey and flew into cover. The chick (squab) tottered away into nearby bushes apparently uninjured, its immature plumage suggesting that it was still a nestling. The hawk re-appeared heading for a nearby tree - was it hunting for another squab after losing its first victim?

Woodpigeons have a long breeding season but only lay one or two eggs per brood, with rural pigeons laying into September. We have noticed several very lethargic and rather sickly looking fledglings recently, and increasing number of road kill - some adult pigeons seem reluctant to fly until nearly beneath the front wheels.



*Woodpigeon with squabs*

Where did Craneflies go? Late summer always produced dancing daddy long legs entering the house of an evening, and always out of reach when one attempted a humane capture and release. Likewise where were the huge blundering June bugs or Cockchafers; huge flying beetles zooming around as darkness fell?

The concern with permanently netting over the garden pond against heron attack was that access to it would be denied to dragonflies, so it was good to see a large Southern Hawker flying comfortably between net and pond surface and ultimately finding an exit. She brought a flash of bright green as she moved to and thro across the dark water, but strangely she was not dropping her eggs into open water but placing them into the damp moss at the water's edge.

Housemartins were still seen locally on the 24<sup>th</sup> September.

**Diana Tait and Rod Eldred**





**SATURDAY TRAINING**  
**@ The Holding Field**  
 Times vary, enquiries to:  
 Head Coach - Deano  
 07544 729062



Training is OPEN TO ALL Boys and Girls Year 1 to Year 11

**KYFC have kick-started the new season with gusto!**

Some fantastic results for the first couple of fixtures.

We are very pleased and proud to have new sponsors this season. Our thanks go to Whiterok Architecture for sponsoring our two U9 teams and J Verney Plumbing & Property Services for sponsoring our U10 & U11 teams.

With the success of the Lionesses, many girls have come forward keen to play. All of our teams are mixed and we welcome everyone to our training sessions but, with another willing coach stepping up a new 'Drills & Skills' session will run on a Monday evening at The Fieldgate Centre for girls in Years 5 & 6.

If interested, please contact Jools on: 07872 047189.

Jayne – 07833 430009 KYFC Events, Media & Communication

## Basingstoke Gang Show



Charity Number: 1042738

Basingstoke Gang Show returns to **The Haymarket** for its 28<sup>th</sup> stunning variety show extravaganza. With a production of classic to contemporary performances brought alive by

over 65 people in this highly entertaining show, the audience can expect to be delighted by magnificent music & LOL comedy. Basingstoke Gang Show is recognised as the best-selling and longest running 'family variety show' in our region and showcases an extremely talented cast. Dates are **Thursday 9<sup>th</sup> to Saturday 18<sup>th</sup> February 2023**, excluding Sunday 12<sup>th</sup>. Matinee performances also on Saturday 11<sup>th</sup> and 18<sup>th</sup> February.

Adults £22.00, Children £15.00. Last night (Saturday 18<sup>th</sup>) all seats £24. Early Booking and Group Booking Discounts available. Box office: 01256 844244

<https://www.anvilarts.org.uk/whats-on/event/basingstoke-gang-show>

## Kingsclere CE Primary School



We have had a very productive half term this Autumn!

It has been super to see our Year R children settle into school life so well.

We had a really enjoyable Harvest Festival at the church and the children donated a huge number of dried foods and tins to the Kingsclere Community Larder. Thank you again to all our parents/carers for these donations.

We recently spent a day of training with the Local Authority Education Advisor for English who was very complimentary about our children's learning in writing. We are so proud of all the children and the progress they have already made this academic year.

Before the end of term, we will be holding our Friends of Kingsclere School (PTA) Annual General Meeting. We are planning lots of exciting fundraising activities for the year ahead, including our Fireworks display on 5<sup>th</sup> November in the school grounds (see below). We hope you can join us!

**Mrs Jo Messenger, Acting Headteacher**

## KINGSCLERE FIREWORKS

**Saturday 5<sup>th</sup> November 2022**

Kingsclere Primary School, Ash Grove

Gates Open 4:30 pm

Firework Display 6 pm

**Tickets on Sale from Swan Street Stores**

**Adults - £6, Children - £4**

**Preschool Children Free**

**\*\*TICKET ONLY EVENT\*\***



**Disabled parking is available if booked in advance - Blue Badge is required. Please email [fksfireworks@gmail.com](mailto:fksfireworks@gmail.com)**





## Busy Bees Pre-school (Kingsclere) Est.1976



Our Children have settled back into the Pre-school routine and we have welcomed some new caterpillar children and their families. Our theme this half term is Harvest and Autumn. Our Busy Bees parents have kindly donated items for our Harvest collection which we have passed on to the Community Larder. As some of you may be aware, our attendance is lower than normal due to a predicted low birth rate. This, in addition to the impact of the Covid pandemic, has detrimentally affected our finances. We are working hard to fundraise so please look out for our posters around the village with details of our planned events. Let's hope with the extra effort and the support of our community we can get through this sticky patch.

Ways to Help Busy Bees:

- Go Fund Me – <https://gofund.me/196fe0e3>
- smile.amazon.co.uk
- Easy Fundraising - <https://www.easypfundraising.org.uk/>
- Bags 2 School - November 10<sup>th</sup>

[busybeespreschoolkingsclere.co.uk](http://busybeespreschoolkingsclere.co.uk)



## Overton and District

Do come to our next talk:

### Springtime in Japan

by Rosemary Legrand

**Wednesday 16<sup>th</sup> November - 10.00am**

**St Mary's Hall, Overton**

Travel with Rosemary around Japan to enjoy the exquisite gardens and fascinating culture. Rosemary's father, the late George Hyde, specialised in cross breeding azaleas and rhododendrons, and many of his award-winning plants can be seen at Wisley, Exbury, and Kingston Lacy. Rosemary's horticultural background and owning a nursery explain her interest in the spectacular gardens in Japan.

*Free to members, non-members £3 on the door.*



### Claim a 50% Discount with a 'Winter Pass'

We are offering 50% off our standard admissions from 1 November 2022 to 1 February 2023 and your ticket will automatically be valid to use as many times as you like in the time period of the offer – up to three months of visits! Winter is a stunning time to visit, as the long shadows draw across the face of the Mill building. There's plenty to see and do: discover the Mill's story, see our weavers weave silk as their forebears have done for centuries, test your own skills on our hands-on looms, and enjoy the Mill Café's refreshments. Why not combine a visit to the Mill with a walk along the Mill Trail that passes five historic mills between Whitchurch and Laverstoke, and takes in picturesque scenery along the banks of the River Test.

#### Terms and conditions

- Winter Passes can be used for multiple visits from 1 November 2022 to 1 February 2023, Tuesday – Sunday 10.30 am to 5.00 pm.
- The Pass is for entry only.
- The Pass is not valid at Silk Mill events where a separate charge is made.
- Passes are valid only for self-led visits, not for Guided Tour Packages.
- Passes are not valid in conjunction with any other offer.

### Current Exhibition: Stripes

Free with admission and running until 20<sup>th</sup> November this exhibition explores stripes, a pattern synonymous with Whitchurch silk.

### Christmas at The Weavers' Arms

Our pop-up pub, The Weavers' Arms, is normally associated with the Pub Race but we're opening it, for one night only, 6 pm - 10 pm on **2<sup>nd</sup> December**, as part of our Christmas at the Mill programme. See website for more details.

### Christmas Market

Our Christmas Market, featuring high-quality local stall-holders, will be back in the Mill's grounds on **3<sup>rd</sup> and 4<sup>th</sup> December**. Last year we attracted so many visitors there was a definite bustle in the marquee as stalls were browsed and Christmas treats and gifts purchased. Free entry, 10.30 am – 4.00 pm.

[www.whitchurchsilkmill.org.uk](http://www.whitchurchsilkmill.org.uk)

## Wolverton Village Market

The next Market will take place in Wolverton Village Hall on **Saturday 5<sup>th</sup> November from 9.30am until 11am**. There will be various Stalls for you to peruse so please come along and maybe find that elusive item you have been searching for. Stalls will include Antiques and Collectables, Locally made Garden Ornaments, Plants and Vegetables, Books, Locally produced Honey, Bric a Brac, Household Supplies and many more. Entrance is free and parking is available outside the Hall.

For further details please contact **Tony or Julia Drake on 01488 608594**

### *Kingsclere Tower Magazine Reserve Delivery Volunteers Required 2023*

The Tower Magazine team is busy preparing for the 2023 editions and looking forward to delivering it to the 1600+ residences in and around Kingsclere from January - November 2023.

Our dedicated team of volunteers deliver the Tower to your door each month (and have done for many years), come rain or shine. They sometimes need to take time off for various reasons, so to enable us to continue this valuable service we would like to set up a small reserve team that can help out at short notice (7-10 days), should any one of the team need to take a break.

The delivery locations can vary, so if you have good knowledge of the village and surrounding area your occasional help would be much appreciated. If you can only offer to help in your local area that would also be much appreciated.

The magazine is normally prepared for delivery on the last Friday each month. If you have a spare hour occasionally we would appreciate your help. Please contact Brian Elborn (Tower Distribution):

**b.elborn345@btinternet.com Tel: 01635 298704 Mob: 07774 1075473**



## Painting & Decorating Services

We are a family-owned business with over 20 years-experience, carrying out residential and commercial painting and decorating services covering Kingsclere and South central. We offer a wide range of services on projects of all sizes. We work closely with the client ensuring a high-quality finish in a timely, professional manner at a competitive price. Please find examples of our work and reviews on our Facebook page. Contact us to request a free, no-obligation quote.

- Interior Painting
- Exterior Painting
- Wallpapering
- Paint Spraying
- Specialist Paint Effects
- Handyman Services

**M 07359 373 913 E [dextersdecor@hotmail.com](mailto:dextersdecor@hotmail.com) F dextersdecor**

## THE KINGSCLERE TOWER DIRECTORY

<b>POLICE, FIRE or AMBULANCE</b>	<b>Emergency 999</b>
Police Enquiries/Information	<b>non Emergency 101</b>
<b>Kingsclere Health Centre:</b>	01635 296000
<b>North Hampshire Hospital, Basingstoke</b>	01256 473202
<b>Parish Council:</b> 37 George Street (see page 2)	01635 298634
<b>Kingsclere Charities Clerk:</b> Jan Pearce	01635 269184
	<a href="mailto:kingsclerecharities@iname.com">kingsclerecharities@iname.com</a>
<b>Dial-a-Ride</b>	01256 462101

### CHURCH CONTACTS

#### St. MARY'S CHURCH:

Vicar TBA

#### Church Warden:

#### Administrator:

Emma Rivers 01635 299528  
[administrator@stmaryskingsclere.co.uk](mailto:administrator@stmaryskingsclere.co.uk) 07422 687125

#### METHODIST CHURCH:

Minister: Rev Rachel Borgars 07889 905753  
[Rachel.Borgars@methodist.org.uk](mailto:Rachel.Borgars@methodist.org.uk) 01256 895878

Secretary & Hire of Hall Jeanette Billington 01635 297585

ROMAN CATHOLIC: Rev Patrick Tansey 0118 9814572  
[tadley@portsmouthdiocese.org.uk](mailto:tadley@portsmouthdiocese.org.uk)

Bas & Deane	01256 844844	Swan Street P O	01635 297035
Buses	0345 8101000	Vet	01635 297557 or 40565
Trains	0845 748 4950	Dentist	01635 299981
Gas Emerg.	0800 111999	Age Concern Local Agent	0800 3287154
Chemist	01635 298419	Watership Down Health	01635 296000
Kingsclere Library	01635 297464		

### BOROUGH COUNCILLORS

**Ken Rhatigan** 07850 530319 [cllr.ken.rhatigan@basingstoke.gov.uk](mailto:cllr.ken.rhatigan@basingstoke.gov.uk)  
**Stuart Frost** 07961 265719 [cllr.Stuart.Frost@basingstoke.gov.uk](mailto:cllr.Stuart.Frost@basingstoke.gov.uk)  
**Kerry Morrow** 07422 651172 [cllr.Kerry.Morrow@basingstoke.gov.uk](mailto:cllr.Kerry.Morrow@basingstoke.gov.uk)

### COUNTY COUNCILLOR

**Tom Thacker** 07712 695468 [tom.thacker@hants.gov.uk](mailto:tom.thacker@hants.gov.uk)

### MP for N.W. Hampshire:

**Kit Malthouse** 01264 401401 [kit.malthouse.mp@parliament.uk](mailto:kit.malthouse.mp@parliament.uk)  
 2, Church Close, Andover, SP10 1DP

**There is a more comprehensive list of local contact numbers on the Parish Council website. Go to [www.kingsclere-pc.org.uk/directory](http://www.kingsclere-pc.org.uk/directory)**