



# Operational Inspection Report – Play Equipment

**Site:** Merryweather Road Play Area, Swaffham

**Date of Inspection:** Tuesday 9<sup>th</sup> June 2020

**On Behalf Of:** Swaffham Town Council

**Inspector:** Alan Loades, Apertus Play & Sport Inspections  
RPII Operational Inspector – Children's Playgrounds  
(Certificate No. OP3107)



## Important Notes

- This is an operational report with the inspection looking at the general “state of health” of the equipment with regards to wear and tear, damage and any vandalism. ***It is not a compliance report.***
- The inspection is undertaken at ground level or via reasonable access on the equipment itself, it is therefore a visual inspection only of any overhead beams or structures. The operator is reminded that full examination of the overhead beams or structures should be done as regular “in-house” routine checks.
- Ordinarily the playground inspection includes all play equipment regardless of manufacturer, safer surfacing, and ancillary items including seating, bins, fencing, pathways and approaches. *If the inspection is limited to specific assets only details are shown under “Site Information”.*
- Our inspections are visual non-dismantling inspections and where it is felt that removal of parts is required this will be advised in the report.
- It can be difficult when assessing decay at or below ground level where synthetic surfaces have been installed. Every effort is made to make assessment of the condition of support structures but this is not always possible without removal of the surface.
- During an inspection, should a fault be found that is deemed to be dangerous to life i.e. to potentially cause major injury or death, every effort will be made to contact the client before leaving the site. The item will be taped off as a temporary precaution.

## Site Information



**Inspection completed:** 11.05am.

**Weather:** Sunny intervals

### **General Site Comments:**

**Area subjected to the Government's closures/restrictions due to the Covid 19 Coronavirus.**

**Item:** Bow Top Fencing & Gates

**Manufacturer:** Unknown



**Observation:**

Minor damage to fencing panels in a number of places

**Task:**

Monitor only at this stage



See comment above



**Item:** Waste Bin

**Manufacturer:** Unknown



**Observation:**

Paintwork poor in places

**Task:**

Consider re-painting

**Item:** Benches

**Manufacturer:** Unknown



**Observation:**

Paintwork poor in places and has been etched with graffiti

**Task:**

Monitor and consider re-painting



See comment above



**Item:** Roundabout

**Manufacturer:** No Marking Label present



**Observation:**

**Minor wear to platform edge**

**Task:**

**Monitor only at this stage**

**Item:** 1 Bay 1 Cradle Seat 1 Flat Seat Swing Unit

**Manufacturer:** Unknown

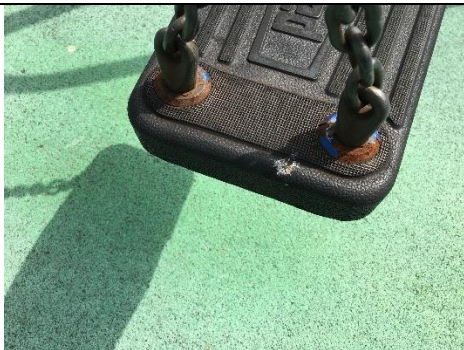


**Observation:**

Some shrinkage of the wetpour surfacing

**Task:**

Monitor and consider repair if potential trip hazard arises



**Observation:**

Minor corrosion on flat seat fixings

**Task:**

Monitor at this stage



**Observation:**

Corrosion on frame

**Task:**

Monitor at this stage





**Observation:**

Some surface corrosion and wear on shackles and connectors

**Task:**

Monitor only at this stage


**Item:** Spring Rocker - Elephant

**Manufacturer:** Ledon Play



**Observation:**

Minor shrinkage to the wetpour edging

**Task:**

Monitor



**Observation:**

Corrosion on spring

**Task:**

Monitor and consider re-painting

**Item:** Multiplay/Slide Unit - Junior

**Manufacturer:** Unknown



**Observation:**

Some shrinkage of Wetpour surfacing

**Task:**

Monitor and consider repair if potential trip hazard arises

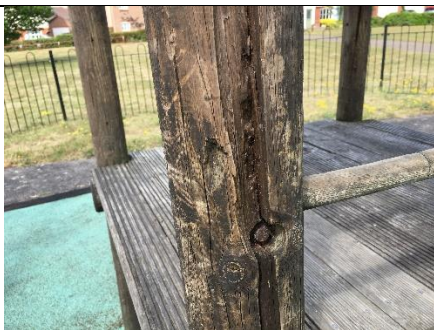


**Observation:**

Minor dents to slide surface

**Task:**

Monitor



**Observation:**

Some rough and snagged areas to timber components

**Task:**

Smooth/sand down



	<p><b>Observation:</b> Some wide shakes in the timber uprights</p> <p><b>Task:</b> Fill with silicone filler any over 8mm wide to minimise finger potential entrapment</p>
	<p><b>Observation:</b> Graffiti present</p> <p><b>Task:</b> Remove if possible</p>
	<p>See comment above</p>
	<p><b>Observation:</b> Some wet rot is present</p> <p><b>Task:</b> Monitor for any deterioration</p>
	<p><b>Observation:</b> Split in slide support timber</p> <p><b>Task:</b> Secure</p>

**Item:** Shelter

**Manufacturer:** Unknown



**Observation:**

**Paintwork worn in places**

**Task:**

**Monitor and consider touching the panting**



**Observation:**

**Offensive graffiti present**

**Task:**

**Remove**



**See comment above**



**Observation:**

**Seats worn and etched**

**Task:**

**Monitor for any further deterioration**

**Signed:**

**Report Completed: 11/6/20**