



# Ivinghoe Beacon Magazine

Issue 97

70 pence where sold



**Ivinghoe Lawn 2pm**

Floats depart

**Pitstone Memorial Hall 1:30pm**



Celebrating the Queen's 90<sup>th</sup> birthday

## Inside this Issue:

- Literary Landscape – local authors lowdown
- Goodbye to an Ivinghoe Institution
- Summer Village Events

# The Beacon Team...

The Beacon Magazine would not reach your door without the kind help of the volunteer band of distributors.

Many thanks to them all; Andy Beezer, Les Hyde, Pat Roach, Geoff Travis and Rob and Anne Cattle – it couldn't be done without you!

If you have any skills that will help us to keep the magazine going or you would like to submit an article, please let us know as we are always looking for new and varied talents!



## Editor: Christabel Boersma

Tel: 01296 661 532

Email: christabelboersma@hotmail.com

## Advertising Manager: Ali Wade

Tel: 01296 662 446

Email: ali\_wade1@sky.com

## Design & Artwork: Laila Palfrey

Tel: 07979 945231

Email: laila@breezdesign.co.uk

## CONTENTS

Welcome from the Chair	3
Neighbourhood News	4-23
Local Literacy Landscape	26-28
Ecumenical Enlightenment	32-36
Cultivation Clippings	38
Sporting Scoop	40
School Stuff	42-46
Beyond the Boundary	50-54
Councillor Communication	58-63

## BEACON COPY AND ADVERT DEADLINES

We aim to get the magazine distributed around the beginning of every February, May, August and November. To ensure your article or feature makes the edition you would like please see the submission deadlines below:



August 2016 Edition – 4 July 2016  
November 2016 – 4 October 2016  
February 2017 Edition – 4 January 2017

## BEACON MAGAZINE ADVERTISING RATES:

1/4 page	£38 per year
1/3 page	£45 per year
1/2 page	£75 per year
Full page	£110 per year

NB: Rates are for 4 editions.

Artwork must be supplied as a jpeg or a pdf file.

# Welcome from the Chair



**Karen Groom,**  
Chair, Ivinghoe  
Parish Council

Welcome to the Spring edition of the Beacon magazine. Hopefully by the time you read this Spring will have sprung and we will all be enjoying some much needed sunshine.

Firstly I would like to welcome our new Clerk, Bridget Knight, and Councillor, Anna Stone; I hope they both enjoy their time with Ivinghoe Parish Council.

## NDP

By now you should have received and completed your questionnaires. The steering group continue to work tirelessly for the long term future of our villages.

## Ivinghoe Aston Playground

Mr Neil Ashby has kindly assured me that he will sign the playground lease thereby securing it for the future for Ivinghoe Aston.

## Parking

As previously reported in the last issue of the Beacon obstructing the highway is an offence. This unfortunately remains a problem particularly along the High Street, and as such will now be enforced by the police. Please be more considerate when parking as pushchairs and mobility scooters are finding it increasingly difficult to pass and are being forced to go onto the road. If parking and other traffic issues are a problem to you, please make sure you attend a joint parish presentation with

Pitstone Parish Council by Ben Hamilton-Baillie on 10th May at Pitstone Memorial Hall at 6:30 pm. Ben is an engaging speaker and an expert in implementing innovative solutions that reconcile the need for efficient traffic movement with quality public open spaces, particularly in rural communities such as ours. There will be an opportunity for public questions and comments during the presentation.

## Annual Parish Assembly

Please come along on Thursday 12 May starting at 7.30pm at Ivinghoe Town Hall. We would like to welcome you and hope that you can join us in celebrating the Parish Council's achievements over the past year. This is going to be an informal meeting with our District and County Council Councillors in attendance and this would be a good opportunity to meet the whole new Council and the Clerk. Wine and light refreshments will be able after the meeting.

There are so many wonderful things to look forward to in our community and hopefully you will all remain supportive of us in our efforts to continue to improve our villages.

Finally, **thank you to all our volunteers** throughout The Parish, who work tirelessly to make our community a better place to live.

**Karen Groom,** Chair  
Ivinghoe Parish Council

# Neighbourhood Plan UPDATE



Hopefully everybody within the Parish has received a questionnaire recently concerning the future development of the Parish. Many thanks to all who have filled it in. The questions were based on comments received at the consultation events held in September 2015. Responses to the questionnaire are now being analysed and will form the basis of the draft Neighborhood Development Plan. We are aiming to present the draft plan to the Parish in the autumn of this year and everyone within the Parish will have a chance to comment before it is submitted to Aylesbury Vale District Council (AVDC). If approved by AVDC, and

subsequently an independent inspector, a referendum will be held. It is expected that the referendum will take place in the spring of 2017 and this will provide an opportunity for everyone in the Parish to vote on whether or not the plan should be adopted. The plan has to reflect AVDC'S strategy for implementing Central Government planning policy, but gives us the opportunity to have an influence on the future of our Parish community.

If you would like more information please contact Richard Freeman on **01296 660894** or **rfreeman@btinternet.com**.

**Malcolm Stubbs**

Have you ever thought about 'growing your own'? Growing your own fruit and vegetables can be a very satisfying experience and in Ivinghoe we are very lucky to have some beautiful allotments just off Church Road, overlooking St Mary's Church. If you are an Ivinghoe resident and would like some more information about availability of plots - we have them in a range of sizes - please contact the Parish Clerk at [ivinghoeparishclerk@gmail.com](mailto:ivinghoeparishclerk@gmail.com)

NB: there may not always be an available plot but we do keep a waiting list!



Enjoy Home cooked food at the

## Waterside Café

**Pitstone Wharf, Cheddington Road, Pitstone, Bucks LU7 9AD**

Breakfasts, Lunches, Soup, Sandwiches, Toasties  
Homemade Cakes, Cream Teas plus a selection of  
Hot & Cold Drinks

**Open All Year (Nov. to March Fri. Sat. Sun. 10am to 2.30pm)**

**(April to Oct. Wed Thurs Fri. Sat Sun -10am to 3pm.)**

*Bank Holidays 10am to 3pm*

On request for group bookings we can offer seating for 36people.

Call 07769 961196 or Email: [cafe@pitstonewharf.co.uk](mailto:cafe@pitstonewharf.co.uk)

[www.pitstonewharf.co.uk](http://www.pitstonewharf.co.uk)



## Is your money working hard enough for you?

- Your savings** – are your investments performing as you expected? Why not try our **ISA Review service**?
- Your insurance** – is your life, critical illness or other insurance value for money? Why not try our **Premium Comparison service**?
- Your retirement** – are your pension plans on-track or are you are retiring soon? Why not use our **Annuity Search service**?
- Your mortgage** – are you on the most competitive deal? Why not try our **Mortgage Search service**?

**Why not contact Paul Pearce, a Chartered Financial Planner, for a no obligation initial conversation?**

Email: [hello@finpru.com](mailto:hello@finpru.com)

Telephone: **01525 220 480**

Financially Prudent (IFA) Ltd,  
23 The Green, Edlesborough, LU6 2JF

Financially Prudent (IFA) Ltd is authorised and regulated by the Financial Conduct Authority



# Ivinghoe Town Hall... News!

We continue to enjoy the support of a lot of activities (some ad-hoc) eg., Children's Parties and other events in addition to our regulars. (Ballet, Zumba, Morris (Moon) Dancing, Pilates, Metafit, Chilterns Art Group, WI and various other Music rehearsals, & AGM's (Ford End Watermill Society & Pitstone Allotment)

The AGM to which all are invited will be held at 8pm on Thursday 19th May.

The AGM Agenda to include the following items will be:

- Minutes from the 18th February meeting
- Chairmans Report
- Reselection of: Chair / Treasurer / Secretary /Booking Clerk
- Matters Arising
- Booking Secretary Report
- BVCL Report
- Treasurers Reports (BVCL + ITHCM)
- Condition of the Hall

## Ivinghoe Town Hall regular events:

A New Year means good reasons (or poor excuses) for (not) trying one of our many varied activities and re-making acquaintances or new friends.

**Monday:** 3pm-7.45pm – **Ballet**  
Lisa (07834 281434)

**Tuesday:** 10am – **Beacon Art** Marion  
(01296 661291)

**Tuesday:** 7pm – **Zumba** Caroline  
(07941 092673)

**Tuesday:** 8.15pm–10.00pm – **New Moon Morris** Charles Thorogood  
(01296-661540)

**Wednesday:** 8.45am and 10am **Pilates**  
Andrea (07855 138005)

**Wednesday:** 1pm **Adult Ballet** and at 2pm **Vintage Fitness** contact (KaSo) Kate or Sophie (07985 048880)

**Thursday:** 9.15am–9.45am **Metafit – NEW CLASS** Graham Pepper  
(01442 827742)

**Thursday: W.I.** Monthly – each 2nd Thursday (Win: 01296 660755).

In addition to our regulars The Town Hall has enjoyed hosting approximately 15 'ad-hoc' bookings.

**NOTE:** We have a lot of 'slot availability', especially on Monday AM's, also Tuesday and Wednesday PM's and all day on Friday's !

Also, please try the web site at [www.ivinghoetownhall.org.uk](http://www.ivinghoetownhall.org.uk) where you can see regular activities and search for Hall availability dates, or if you prefer to enquire in person then call Stephen Swinbank (The Booking Secretary) on **01296 660344**. Or via email: [spswinbank@gmail.com](mailto:spswinbank@gmail.com)

The Post Office and Shop direct Telephone Number is: **01296 660582**.

**Stephen Swinbank**, Secretary



Historic user-friendly Hall with awards for Best Used and Managed Small Hall in the County. Sited in the centre of the Village, the Town Hall provides modern facilities for local groups, parties and fundraising activities.

## IVINGHOE TOWN HALL

[www.ivinghoetownhall.org](http://www.ivinghoetownhall.org)

## Planning a party or meeting?

### Facilities include:

- Music options including a quality electronic piano
- Stage with specialised lighting, curtains & dressing room
- Kitchen with microwave, oven, hob, fridge, comprehensive crockery and glassware
- Chair lift/wheelchair for those with mobility problems.

**If you would like further information, contact Stephen Swinbank on 01296 660680 or [spswinbank@gmail.com](mailto:spswinbank@gmail.com)**

## FORD END WATERMILL IVINGHOE, BUCKINGHAMSHIRE

The only working watermill to survive intact in the county. The mill, recorded in 1616 but probably much older, was in use until 1963.

Now restored by volunteers and run by Ford End Watermill Society, it retains all the atmosphere of a small farm mill of the late 1800s. Visitors can work the sack hoist and mill wheat on a rotary hand quern. Stoneground wholemeal flour for sale on milling days.

### OPENING TIMES 2016

**Afternoons 2.00–5.00pm.** 28<sup>th</sup> March – Easter Monday, 2<sup>nd</sup> May - Early May BH Monday, 15<sup>th</sup> May - National Mills W/end, 30<sup>th</sup> May – Spring BH Monday, 19<sup>th</sup> June - Sunday, 10<sup>th</sup> July - Sunday, 7<sup>th</sup> August - Sunday, 29<sup>th</sup> August - BH Monday, 13<sup>th</sup> September - Sunday, 16<sup>th</sup> October – Sunday As part of Tring Apple Fayre.

### MILLING DEMONSTRATIONS (water level permitting)

between 2.30pm–4.30pm approx

Last admission 4.30pm. Admission: Adults: £3 children (5–15) £1

Ample car parking – no toilet facilities. Restricted disability access School and other parties welcome by arrangement.

Contact: Mill Manager - Chris Tugby, [millman@fordendwatermill.co.uk](mailto:millman@fordendwatermill.co.uk) or Telephone: 01442 825421. [www.fordendwatermill.co.uk](http://www.fordendwatermill.co.uk)



### LOCATION

Station Rd, Ivinghoe, Bucks LU7 9EA  
600 metres from the church along Station Road.  
The B488 to Leighton Buzzard.



# Hub News...

Our annual **Spring Market** – Easter Saturday, 26th March was a modest but well attended set of seven stalls and craft tables, a big tombola stall and an inviting Raffle with several family day outs to win. The weather was bleak but the atmosphere in the Hub and café cosy and fun. 32 Easter Egg Hunters braved the wind in the newly paved kitchen garden and solved the hidden clues, resulting in 32 Easter Egg prizes being won, and three Easter Hat wearing young lads receiving medals and cups for their creative efforts! **£300 profit was made on the day**, and will be gratefully put to good use in something for the Hubs needs.... maybe the planting out of the five new planters for Summer floral beauty, which are due to arrive in the Hub Garden soon.

**Thank you to all who came and all who supported the day with your efforts and contributions!**

Saturday 2nd April was, to our knowledge, the first time the Hub has been entertained by a **Jazz and Rock Band – the John Cameron 3...** and this session was welcomed by about 50 villagers and some celebrities, who toe tapped their way through a thoroughly enjoyable evening. Here's to many more of these in our future... perhaps once a month as a rock solid event! Maybe the summer will see us toe tapping to **Jazz on the outside pavers**.

As the welcome and long overdue replacement of tired and **unsafe Asphalt with new safer block pavier's** has progressed in all the three outside spaces around the Hub, our original deadline

has passed. This has been due to hidden antique hazardous plumbing emerging in several places, and tree roots having been found to have over the years cracked existing pipes, and many other typical hold ups! Dean, Joe, Sven and their team have worked through all this with determination and goodwill, and have done all they can to facilitate the Hub remaining accessible throughout. We hope to be finished well before you read this, and already enjoying the benefits of the safer surfaces!

We have been storing up and awaiting the sun for **two more benched tables** which will be erected soon and available to people who are renting space for events in the Hub, as averse to CuriosiTEA tables for outside use of Hayley's café.

The new planters are to replace the static raised beds we were gardening up until now, and this time **our new planters will be mobile on casters** with brakes also for safety, and a height that is good for our backs!

**Don't miss out on CuriosiTEA Rooms next Pop-Up Restaurant Night, on 22nd April on an Italian theme**

## RIP Rosemary 'Jane' Elliott

We have learned recently that our well-loved and much missed Church Road grocer shop keeper 'Jane' Rosemary Elliott's family are proposing using



the charitable monies collected at her recent funeral to go towards buying a **commemorative bench seat with her name engraved upon it** to stand in the grounds of the Hub for members of this community to sit upon and watch the world go by, much as she did. We will all miss Phil's and his family's 'Aunty Jane', and were pleased to follow up the traditional and loving service at the Church on her behalf with the use of this Hub for her wake.

'Jane' Rosemary Elliott's family sang a lovely Mozart piece 'Ave Verum' at her funeral and later tested our own acoustics here in the Hub with four informal **beautiful unaccompanied songs** as the wake was being cleared away. Hopefully they will return on a happier occasion and

share their obvious talents with more of us here in the future!

Meanwhile Karen Elliott, Charlotte and Sophie's mum and Phil's wife, has, on request, sent over the transcript of her **Eulogy to their Aunty Jane** so that more of our community can share the warmly described reflections and memories of our new friends in the extended Elliott family.

**See you in the Community Hub some time.**

Our Hub website is: **www.ivinghoeoldschool.com**; Our email is: **ivinghoeoldschool@btconnect.com**; Our HUB direct phone number is: **01296-661666**; CuriosiTEA Rooms **01296-663853**.

**Carol Tarrant**



Community space for hire - of great Victorian character, recently refurbished by our Community for this Community's use.

## Old School Community Hub , Ivinghoe

[www.ivinghoeoldschool.com](http://www.ivinghoeoldschool.com) 01296- 661666

Email : [ivinghoeoldschool@btconnect.com](mailto:ivinghoeoldschool@btconnect.com)

Ivinghoe Community Hub on Facebook



Venue run with financial transparency by our 'not for private profit' local voluntary trustees for Community benefit and increased Community wellbeing.

Space is at ground level for easy access, is warm, and with restored Victorian varnished floorboards, and new comfy modern padded stackable chairs, fold away tables and ambient new lighting - can swiftly adapt to all activities for all generations.

**£9** for first hour in 37.65 sq.m room with piano or 31.61 sq.m room with sink and **£7** per hour thereafter.

69.26 sq.m room with retractable screen midway. **£12** for first hour and **£10** thereafter per hour.

**Contact us or come in for a booking form and our support for your plan.**

**CuriosiTEA Rooms** is our pivotally important permanent tenant within our building and serves home-made affordable refreshments and hot meals seven days a week. Special arrangements for space hirers who do not wish to self-cater for their own events can be arranged with Hayley Wesley on – 07775-831153 Facebook Curiosity Rooms

### IT Suite

Software includes Microsoft Office 2013 Suite; Photoshop C6; Skype with webcam and microphone;

£2 per PC....one with 40" wall mounted monitor and speakers.

10p A4 b/w photocopy

50p A4 colour scan and print

50p A4 lamination

Booking whole space for small conference or meetings etc. £10 an hour.

Personal tuition starting soon!



## NEW MEMORY SUPPORT SERVICE IN BUCKINGHAMSHIRE

If you are concerned about your memory, the earlier you seek help the better as there may be support or treatment available that can help you.

There are many different things that can cause memory problems but sometimes it can be an early sign of dementia.

This new service helps you to take control of your situation by offering a single point of contact for:

- Advice and support through memory screening and diagnosis
- A listening ear and practical support afterwards

Get in touch today to find out more.

01296 331749

[memorysupport@alzheimers.org.uk](mailto:memorysupport@alzheimers.org.uk)



## Volunteer and help bring a smile to someone's face...

### ...our volunteer befrienders do this every day

Living with dementia can be isolating. Alzheimer's Society volunteer befrienders make a difference. Find out more about volunteering with us by having a chat with Laura or Lisa on 01296 331722 or emailing [bucksbefriending@alzheimers.org.uk](mailto:bucksbefriending@alzheimers.org.uk)

### We'd love to hear from you.

[Alzheimers.org.uk](http://Alzheimers.org.uk)

Alzheimer's Society operates in England, Wales and Northern Ireland.  
Registered charity number 296645.



# In Loving Memory of Rosemary 'Jane' Elliott

10th November 1939 to 31st January 2016



1937. Before we go much further I want to tell you all that it seems quite strange to us to be calling Rosemary, Rosemary. Some of you in the village only knew her as Rosemary, some of you only knew her as Jane, and some of you knew she was Rosemary but you were allowed to call her Jane, to us she was affectionately known as Aunt Jane.

Now there seems to be several stories as to how she became known as Jane, but our version told to Phil by his dad Bill was that at some early point in their childhood Bill decided he didn't like having a younger baby sister and told us that he said *"take that old Jane back from where she came from"*, but others of you have told us that her mother always said she was a *'plain Jane'*. Wherever the name came from in her early life, the name Jane stuck and from here on in, please forgive me, but I will refer to her as Aunt Jane. So to pick up where Aunt Jane's story began...

Jane was born into the Elliott family, a long line of Grocer's and Butchers in Ivinghoe. Jane was born into a family with a solid retail background. Her father William, 'Master Butcher' in Ivinghoe was born in 1886 and had lived and subsequently taken over from his father to run the Village Grocer's shop with a Butcher's shop out back in the barn. Jane's father was 52 when Jane arrived, in fact Jane arrived just two days before his 53rd Birthday.

Jane's mother Winifred was 39 when Jane came along, challenging having children at 39 today but back then she must have been made of strong stuff. She was William's second wife. Winifred herself was from a solid background of Butchers and Grocers as well. Her mother was a Bardell, known also for their large butchers and fishmongers in Leighton Buzzard. And so a solid partnership began and continued in the same tradition as it had always been. The Elliott's had been grocers, butchers and milliners in the village of Ivinghoe as far back as 1851.

So as Jane's life began, she was baptised in late November 1939 at St Andrew's Church, Leighton Buzzard. Jane grew up attending the village school here in Ivinghoe, now the Community Hub and some of you here today attended school with her and remained friends with her for many years, keeping in touch in person, by letter or by phone.

In September 1948 Bill and Jane's father died, aged 61, leaving Winifred to care for them both and to run the business single handed. Bill was 11 and Jane was nine. Around about this time Bill would have been going off to school at Tring and Jane followed him some two years later around 1950.

Bill and Jane must have helped their Mother quite a bit with the shop, it must have been quite a demanding business, a grounding that would later help Aunt Jane enormously. Bill married and moved away, at the age of 17 in the spring of 1954, living at Station cottages, Cheddington, later moving to Long Marston where Phil was born and finally settling down in Leighton Buzzard, leaving Jane behind at

the shop with her Mum.

We've found some lovely photos of Jane in her early years, whilst we've sorted through the shop and her home since she passed away at the end of January, our favourite being the one you'll see on the front of the Order of Service.

## Definitely not a 'Plain Jane'

On several occasions Jane told us that she had been 'engaged' twice in her life but had never got as far as marriage. Engaged to whom? Well we may never find out, one of the family mysteries that will die with Jane. Something kept Aunt Jane at the shop and with her Mum. It appears she would never marry. We will never know the truth surrounding that part of her life. It was little glimpses of information like this that made Aunt Jane so fascinating to us. She certainly knew how to keep a secret and if you started to ask too many questions that was the end of that week's telephone call. Phil remembers very well, visiting his Grandmother and Aunt Jane as a young boy with his Dad, they'd travel by motorbike and side car from Leighton Buzzard, for a cup of tea and a bacon sandwich or altogether as a family for Sunday dinner, which would include a bottle of Rodwell's fizzy pop. He was always allowed to help himself to bag of penny sweets from the shop. His grandmother would always sit in the living room in the corner in 'her' chair. Never moving from it even when they ate, Jane would be in total control. You did as you were told and left to go home when Jane said it was time. Phil had never been allowed upstairs in the property and back in early February this year, after Jane passed away, he stood in the living ►

**K**aren Elliott, Charlotte and Sophie's mum and Phil's wife, has, on request, sent over the transcript of **Karen Elliott's Eulogy to their Aunty Jane** so that more of our community can share the warmly described reflections and memories of our new friends in the extended Elliott family.

Rosemary Elliott was born on Friday 10th November 1939 at a Maternity Home at 41 Hockliffe Road, Leighton Buzzard, A daughter and second child to William and Winifred Elliott of no.3 the High Street, Ivinghoe.

Rosemary joined the Elliott family in late autumn of 1939 and was the younger sister to William (Bill/Billy) born just under two years earlier in January

room trying to bring himself to go up there, he asked her spirit, out loud, if it was ok to go up. Still not wanting to step out of line and go up without her permission.

Jane had chosen to devote her life to the business, helping and subsequently caring for her Mother, up until Winifred died in January 1982, one month off of her 82nd birthday. Jane remained living and working at the shop for the rest of her life.

The Church was an extremely important part of Jane's life. As a regular church goer and holder of the church key, unlocking and locking, the church every day, she told us she had once locked a workman in the belfry, he had to holler from a window to attract attention and Jane had to go and let him out.

For many years her brother Bill, Phil's dad, was our main source of information about how Jane was. Until he passed away in 2007 when Phil took up the reigns and he would try and ring Aunt Jane every week to keep in touch. She declined attending our wedding in 1987 as she couldn't 'close' the shop on a Saturday. By this time she had become a stalwart member of the Ivinghoe community. By this time many of you would have known Jane for many years, and known how important the shop was to her and how important it was for your village community. Jane would be up at the crack of dawn delivering your newspapers, she wouldn't dream of paying wages to employ a paper boy, and all before the shop opened at 7am. She was even known on occasions to open the shop after official closing time if someone knocked on the door because they had run out of something.

Some of you may even have been told to leave the shop if she disapproved or disliked you at that minute.

We are sure that Jane's mother's death hit her hard. She was now solely responsible for the family business and being stubborn and determined she was not willing to let it die without a fight, she didn't know any other life at the age of 44.

Aunt Jane continued to run the shop, it had always been a thriving business, but in the late 1990's Aunt Jane developed a form of bowel cancer, which she had a number of treatments for. But this illness took its toll on her and to our knowledge this is when the Elliott's family business finally closed. Jane fought her illness and seemed to win but it left her in a great deal of pain with her back and legs, her 'elephant legs', she would call them. Not able to wear shoes very often, she would go out in slippers when she managed to go out at all, she would tell us how it would all be so painful she would take herself to bed for days on end, living on cups of tea and Rich Tea biscuits. She didn't seem to live on very much at all. That always worried us but she just wouldn't take anyone's help. Stubborn to the last, an Elliott 'trait'. We think she may have eaten the remains of the shop stock when it closed, finally living on tins of Soup and some odd groceries someone delivered to her from time to time. Bob Irving the village postman for many years would take letters and bills and post them for her, she'd wait for him at the door, to come by and she'd hand over her outgoing mail.

In the 29 years I have been married to Phil I have only had the pleasure of

meeting Jane face-to-face just once, about two and a half years ago. We spent a couple of hours sitting on two chairs and a tea chest just inside her front door, we were never allowed to go any further. When she'd had enough she sent us packing. We would try to drop by unannounced but she wouldn't come to the door, sometimes waving from her upstairs window if we were lucky. She'd then ring us a few days later and would heavily berate us for attempting to pop by, before she continued to tell us the village news.

Sadly once Jane had passed away we were able to see the heart-breaking conditions she lived in. We think she had become embarrassed by the state of the shop and her home, which her illness and health issues had prevented her caring for easily. Jane lived in a time warp. You would all still find the shop laid out just as it was. Some food still on the shelves, you'd certainly never run short of black treacle or golden syrup. The shop and living area had no heating, only an open fire in the living room. There was no kitchen, just a sink under the stairs and a two ring electric hot plate, an outside loo, no bathroom and no hot running water. A situation quite hard to comprehend in this current day and age. Jane had never owned a Television... but her lasting companion from the modern world was her wireless which she always listened to. Woe betied us though if we ever called it the Radio. Jane had become quite reclusive to all visitors, even villagers offering help with shopping, Jane had even stopped her landlord calling, she would not accept help in any way perhaps ashamed of the living conditions.

Despite the end of her life being so challenging our conversations with Aunt Jane were always varied and full of information, we tried to keep up with the village Births, Deaths and Marriages. She spoke often of people she knew who had passed away, she knew most of the village news and information. Now that Jane was much less active this was all she had to keep her going the world outside her windows.

Since Aunt Jane passed we have been overwhelmed by the lovely stories we have heard, about Jane's life and her contribution to this village, what she meant to so many of you. Sadly with Jane's passing so many stories will also die with her, the end of an era for you and for us.

At the end of this service Jane will be laid to rest next to another village character Laurence Horn. We've recently heard from Roy Hawkins that Laurence would be regularly found outside Jane's, with his old bike, putting the world to rights with Jane on her doorstep, we'd like to think as old friends, they will be able to continue putting the world to rights once again.

**God Bless you Aunt Jane,  
Rest in Peace**



# RikkIAbout

**T**ruth told, Carol probably did expect the IA inquisition, as she lives at the bottom of our garden. More accurately, bearing in mind our respective acreages, we live at the bottom of her garden! From the day we moved in, it was obvious that the horses on the other side of the stream were quality. Carol Bennett runs the dressage yard at Beacon Farm, and I was keen to find out straight from the horse's mouth, as it were, something about this sport, which has been propelled into the limelight recently through one particular rider.

**RH:** What are the basics of dressage?

**CB:** It's all about the training of the horse; working on the confidence, suppleness and balance of the horse to achieve harmony with the rider. In competition horse and rider are tested by performing a series of movements which, in early stages, demonstrate obedience, balance and

suppleness. At advanced levels (the highest being Grand Prix) all that harmony has to come together with power and elegance, through movements that are testing to the horse and rider. There are two main elements at Grand Prix. The first involves a set test and the second involves a routine designed by the competitor, which is put to music, rather like in ice skating. Points are scored for overall impression, artistic impression and technical difficulty. It's perhaps where sport meets art.

**RH:** How did you get into dressage?

**CB:** I used to compete in show jumping and eventing, but particularly loved the training aspect, hence the move to dressage. At Beacon Farm I have worked with a range of riders from beginners to those of international standard. Every horse, every rider and every problem are different – as a dressage trainer and as a rider I never stop learning.

**RH:** So you compete as well as train?



**CB:** Yes, I do. I am currently competing 'Candini' at Grand Prix. He's 15 this year, a Holsteiner gelding. I've had him here in Ivinghoe Aston and trained him since he was 3. I am trained by Carl Hester in Gloucestershire and I go there for a couple of days each month.

**RH:** Wow! Isn't he Charlotte Dujardin's trainer? (I try to sound knowledgeable, but only know these names because I have a horse-mad niece who raves about them!)

**CB:** Yes, he is. He and Charlotte have catapulted Britain to the top of dressage from nowhere. Until the last Olympics we'd never won a medal in dressage. They are amongst the top riders in the world. Until they came along, dressage was dominated by the Germans and Dutch. Carl is an amazingly gifted trainer.

**RH:** I gather from Horse and Hound, which I read avidly (i.e., found via Google), that Zara Tindall, the Queen's Granddaughter, also trains with Carl. Is Her Majesty enthusiastic about dressage?

**CB:** I think she loves everything to do with horses. In 2012 I took part in a dressage display with fifty other riders at a pageant called "All the Queen's Horses" to celebrate her diamond jubilee. She definitely appeared to be enjoying it.

**RH:** How long have you been running your manege (is that the word?) in IA?

**CB:** Twenty-eight years. I've done a lot here over that time helping with Pony Club children and young dressage riders – well, in fact all age groups. I'm a great enthusiast so really enjoy helping anyone who shares my passion for working with horses.

**Ladies and gentlemen, girls and boys, that sounds like an invitation!**

## Watch out for drinkers

As you are walking through the countryside

over the next few weeks, you may spot a few drinkers skulking in the undergrowth, and not just near the Village Swan. The Drinker Moth has one of the UK's most spectacular caterpillars and is quite common around here from now until June. It grows up to three inches long. It is bluish grey on the back, black on the sides with spectacular white tufts, and covered in pale reddish-brown hairs. Its tipples is drops of dew.

## Bluebells at Dockey Wood

The wonderful spectacle of bluebells at Ashridge is over for another year. Those who enjoy an annual pilgrimage to Dockey Wood need to be prepared for a less impressive display for a few years. Dockey Wood is an important part of Ashridge's commercial woodland and, as a plantation, it requires thinning every now and again. This will be done in the coming Autumn/Winter. The change in light and the disturbance caused by the logging operation will inevitably affect the bluebells but they will, in due course, return to their former glory. Access will be more carefully managed in future to ensure that the bluebells and other flowers are not trampled unnecessarily.

## Bridge

With the future of Village Hall still under discussion, would anybody be interested in playing bridge there? If so, please let me know whether you would prefer daytime or evening, and I will pass your name to my dear wife, who is the bridge player. (To me, *no trumps* is simply my wish for the USA.) This is not a promise, just a tentative sounding out of potential interest.

**Rikki Harrington**

Brampton, Ivinghoe Aston **01525 220625;**  
**harrington.rikki@gmail.com.**

# Ivinghoe and Pitstone W.I.

We have had a very busy few months for the start of 2016. Going back to January, we had a Table Top Sale to which, despite advertising, not many people turned up. This was disappointing for the sellers who paid for their tables.

At our main meeting in February we had a very interesting talk by Jean Yates entitled "Dunstable's Augustinian Priory across seven Counties." It was enlightening to hear about the Priory in years gone by. The amount of land, churches and buildings they own and maintain was an eye opener to us all. Tours can be organised and I think this would make a very interesting day out.

We held a very successful Valentine's Day Lunch at which sixty villagers were served with a wonderful selection of food all cooked by our members. A big thank you to all who cooked or helped in any way. Possibly we can repeat it next year.

Our new Book Review Club has got off to a good start and meets on a Wednesday once a month.

We are busy raising money for our Centenary celebrations next year and also to do something in Ivinghoe and Pitstone for everyone to enjoy. All our members are taking part in a challenge to at least double £5 before the end of August. Ventures include selling cards, jam, elderflower cordial, scarves, cakes, and crafts of all kinds. Some members are offering to do ironing or give massages and there is a lap quilt to raffle. There are many more ideas coming up at each meeting. Please support us if you can.

At our March meeting we welcomed Helen Armitage who treated us to a very interesting look "Behind the Scenes" of the



WI President, Sue Jones, welcoming 'Her Majesty' at the WI Queen's 90th Birthday Party Celebrations

T.V. News. This was an open meeting for anyone in the villages to attend.

We organised a special meeting for April called "Crowns, Coronets and Posh Hats". This was a celebratory Tea Party for the Queen's 90th Birthday. It was a really fun evening and luckily for us, Her Majesty managed to find time in her busy schedule to pop in for half an hour or so. Our thanks to Ali, Christabel, Michelle and Annie who helped on the evening.

Towards the end of April we hosted a Wine and Cheese evening which was open

to all. Tickets were on sale at Mason's Store and Windmill Pharmacy – our thanks to them. This was organised by our Centenary Committee and was a new venture for us. It proved to be a very interesting evening.

We hope to be serving Cream Teas in the marquee on Ivinghoe Lawn on the afternoon of 19th June.

We are also having a stall at the Party in the Park on Pitstone Green on 16th July where we will be selling cakes etc.

We plan to have a Swishing Event in Pitstone Hall on the afternoon of 17th September. More details of these three

events can be found on notices which will go up around the villages nearer the dates. So keep your eyes open and do come and join us if you can.

We have welcomed several new members to our meetings this year and are always pleased to see new faces. If you think you would like to attend one of our meetings, we can arrange a lift for you. We meet on the second Thursday each month in Ivinghoe Town Hall at 7.45pm. Please ring Sue on 01296 660436 if you are interested.

**Sue Jones**, President

## - The 50plus -

- Plumbing
- Electrical
- Handyman

- From small works..
- To larger projects

- Free estimates
- Friendly advice
- NICEIC & Gas Safe personnel
- Free 50plus HomeCare Club for discount always and great offers

**0845 22 50 495**

By the 50plus for people of all ages  
Calling from a mobile? Use 01494 784 448

[www.the50plus.co.uk](http://www.the50plus.co.uk)



**RGC**

Agricultural &  
Horticultural Engineers

Mursley, Milton Keynes, Bucks MK17 0SA



**Tel: (01296) 720066**

[sales@rgcengineers.co.uk](mailto:sales@rgcengineers.co.uk)

[www.rgcengineers.co.uk](http://www.rgcengineers.co.uk)

**Sales, Service & Repairs**

Garden Tractors  
Chainsaws • Strimmers  
All Garden & Ground  
Care Equipment  
Compact Tractors, Quads etc.

**Service & Repairs** to most leading makes of machine.

## Early bird call for BeaconLit 2016

Things are really hotting up for the fourth BeaconLit literary festival, being held on July 2 at Brookmead School, Ivinghoe – and the festival committee promises a fabulous day out for readers, writers and all book lovers.

Full day passes for the festival are now on sale and if you take advantage of our Early Bird offer and book by 31 May, you'll pay just £19.50 to enjoy the whole event – a saving of £5.50 on the full price.

Morning, afternoon and single event tickets will go on sale nearer the time, but the Early Bird discount is described as the best value way to attend BeaconLit, and not miss a single moment of an exciting full day programme. You can buy now at [www.beaconlit.co.uk/buytickets](http://www.beaconlit.co.uk/buytickets).

With a couple more names to finalise, the programme for festival 2016 offers a chance to hear from a host of literary talent, including hot debut authors Angela Clarke, Rachel Dove and Jeannie Waudby, crime writers Alison Bruce, Tracy Buchanan, Fergus McNeill and Dave Sivers and 'Milton Keynes Poet Laureate' Mark Niel.

There are other treats in store as BBC Oxford News presenter Adina Campbell chats to Amanda Jennings, whose novel *In Her Wake* promises to be one of the smash hits of 2016; and historical fiction authors Emma Darwin and Liz Harris will be in conversation about new ways of telling past lives.

During the lunch period, author Dave Sivers and freelance writer Sandra Smith will be joined by editor and proof reader Jane Hammett to answer writers' questions, and Mark Niel will be performing his poetry.

**BeaconLit**  
The Beacon Villages  
festival of books & writing



There will be free parking on Ivinghoe Lawn, just a short walk away (disabled parking available at the venue) and light refreshments available (bring your own picnic if you'd rather), and the usual goodie bags will contain extra treats and surprises this year, thanks to some of the festival's sponsors. The bags are ideal to carry your purchases from Chorleywood books, which the authors will be delighted to sign for you, and there will be opportunities



throughout the day to win books and other goodies.

BeaconLit continues to go from strength to strength and has put the area firmly on the literary festival circuit.

To find out more or buy tickets visit the website at [www.beaconlit.co.uk](http://www.beaconlit.co.uk)

Contact: **Dave Sivers** on **0797 486 4592** or email [davesivers@hotmail.co.uk](mailto:davesivers@hotmail.co.uk)

## PITSTONE MEMORIAL HALL & MILLENNIUM EXTENSION

The large Millennium Extension consists of a generous room with a capacity for 70–80 people and a smaller room with a capacity for 50 people



Bar facilities are available by arrangement with the booking clerk

For further details and revised prices please contact the Booking Clerk,  
Mrs Sue Gregory, 4 The Crescent, Pitstone. 01296 661609

**MASONS**  
MINIBUS & COACH HIRE

25 / 48 / 51 / 53 / 57 / 71  
Seat high quality vehicles

For all your travel arrangements  
Local and long distance  
UK & Continental

**Tel: 01296 661604**

2010 Brochure now available - please call for your free copy

email: [info@masonsminicoachhire.co.uk](mailto:info@masonsminicoachhire.co.uk)

**[www.masonsminicoachhire.co.uk](http://www.masonsminicoachhire.co.uk)**



**Rainbows:** Monday 4.30 – 5.30pm  
Pitstone Memorial Hall  
Guider: Elaine Thorogood  
**01296 661540**

**Brownies:** Monday 5.45 – 7.15pm  
Pitstone Memorial Hall  
Guider: Elaine Thorogood  
**01296 661540**

**Girl Guides:** Tuesday 7.00 – 8.30pm  
Millennium Room, Pitstone  
Memorial Hall Guider: Yvonne  
Ashton **01296 660044**

**To join us,** please visit our  
website at [Girlguiding.org.uk](http://Girlguiding.org.uk)

## Ivinghoe & Pitstone have three great local artistic talents exhibiting with College Lake Artists during Bucks Open Studios

College Lake Artists, an exciting disparate group of Artists and Makers, are delighted to be exhibiting again at College Lake Nature Reserve near Tring, during Bucks Open Studios from 11-26 June. Louisa, Cathy and Nigel, three eclectic and disparate members of College Lake Artists, are all residents of Ivinghoe and Pitstone.

**Louisa Stobbs:** The person responsible for the considerable task of organising the artists to produce an exhibition, something akin to herding cats. Louisa is ideally suited to this task, combining the roles of mentor and tormentor, to instill discipline and get results. Louisa is a photographer. Her studio is largely the great outdoors. She creates wonderful landscape pictures, with such things as the windmill, ducks on ice and a highland cow with an itch. Come and see the pictures. They are a pleasure to behold and great fun.

**Cathy Timbrell:** Cathy creates many wondrous pieces of jewellery in precious metals, stones and enamel in her studio. A sophisticated level of knowledge and skill go into her craftsmanship and artistic acumen, in the making of her beautiful work of modern and classic designs. The studio workshop is definitely worth a visit. Apart from being able to see the finished articles there is a wealth of specialist tools and equipment for soldering, cutting and casting, filing and polishing, burnishing and hammering. The studio is purpose

built – the frontage is made up of a timber frame with large glass in-fills. This makes the working area well-lit especially in the morning sun. Come and see Cathy's studio and you will not be disappointed.

**Nigel Thompson:** Nigel makes thrown stoneware for the kitchen and table, dishwasher, microwave and oven proof. The fascination of pottery is the fact that mud can be made into an object you can eat your dinner off, cook in and much else besides. In this type of work there is not much pure art but plenty of technique which can result in a thing of beauty. The kiln shows no mercy, any faults are ruthlessly exploited; cracks, glaze running off the work, deformation, even explosions: it's all possible.

The pottery is not a studio by any stretch of the imagination being only ten feet square, there is just enough room for the potter and various machines and drying pots. The kiln is outside, a sub mariner might feel comfortable here. Nigel's wheel and kiln are homemade, and he suspects that the learning curve involved was sufficiently steep to be downright dangerous!

For more information contact Louisa on **01296 668637 / 07843276816** [www.collegelakeartists.weebly.com](http://www.collegelakeartists.weebly.com), College Lake Artists on Facebook, or [www.bucksopenstudios.org.uk](http://www.bucksopenstudios.org.uk)

**Louisa Stobbs**

**COLLEGE LAKE ARTISTS**  
An Exciting Group of Artists and Makers  
[www.collegelakeartists.weebly.com](http://www.collegelakeartists.weebly.com)

FREE ENTRY

Louisa Stobbs Photography

Harriet Godfrey Willow Weaving

Niki Bell Watercolours

Paul Elliott Metal Sculpture

Cathy Timbrell Jewellery

Linda Cnelt Acrylics

Nigel Thompson Ceramics

Julie Brown Encaustics

Jenny Hoole Glass

Shirley Jones Pottery

Brookmead School Installations

Tony Hancock Acrylics

11th - 26th JUNE 2016  
10am - 4pm  
College Lake Nature Reserve  
Tring HP23 5QG  
**BUCKSOPENSTUDIOS**

## COLLEGE LAKE ARTISTS

An Exciting Group of Artists and Makers  
[www.collegelakeartists.weebly.com](http://www.collegelakeartists.weebly.com)

**College Lake Nature Reserve**  
**Tring**  
**HP23 5QG**

Photography, Willow Weaving,  
Jewellery, Metal Sculpture,  
Watercolours, Ceramics, Glass, Textiles,  
Installations, Encaustics and Acrylics

**Saturday 11th June to**  
**Sunday 26th June**  
**10am - 4pm**

**BUCKSOPENSTUDIOS**

Proud to be part of  
Bucks Open Studios 2016



## M. D. SPRING AUTOS

Martin D Spring  
28 years established trading



For all your vehicle's needs  
Servicing, Class 4 and 7 MOTs on site, Exhausts,  
Welding, Tyres and Brakes

Your vehicle can be picked up and returned free of charge

Call now for a competitive quote

Telephone & fax: 01296 662280

Mobile: 07860 847328

Unit 9, Airfield Ind Est, Cheddington Lane  
Long Marston, Tring, Herts HP23 4QR



## Ivinghoe Aston Village Hall



Villagers are reminded that there is a hall at Ivinghoe Aston for hire at similar rates to Ivinghoe's Village Centre and Town Hall. For details contact booking secretary Barbara Rayment 01525 220959 or email [jackyparsons@yahoo.in](mailto:jackyparsons@yahoo.in)

## F.R. JEFFERY & SON

Coal Merchant



Coal & Smokeless Fuel  
Logs & Compost

Also spare parts for solid  
fuel appliances

Delivered to your door  
at low prices

Contact Us  
on 01296 661258

# metafit.

CLASSES AT

IVINGHOE TOWN HALL @ 9.20AM THURSDAYS

THE HUB, IIVINGHOE @ 7.15PM TUESDAYS

THE ORIGINAL 30 MINUTE BODYWEIGHT WORKOUT CLASS

BURN FAT NOT TIME

SET YOUR METABOLISM ON **FIRE**

CONTACT : [grahame.activelifestyles@gmail.com](mailto:grahame.activelifestyles@gmail.com)

## LEARN TO RIDE

AT

ROCKLANE RIDING CENTRE

GROUP & PRIVATE LESSONS

FOR ADULTS & CHILDREN (from 4 years)



QUALIFIED INSTRUCTION (from £11 for children)

ORCHARD FARM, IIVINGHOE ASTON

TEL: 01525 222402

Fully Licensed and Insured  
Enquiries welcome



## Small Paws At Home

Pet Sitting Service – Looking after all  
your pets needs whilst you are away.

Small pets cared for in their own  
home, allowing them to relax in their  
own environment.

Other duties include; bins taken out,  
curtains/blinds opened & closed and post  
secured.

Call Elaine on

01296 668863 / 07837 292403

Email: [smallpawsathome@icloud.com](mailto:smallpawsathome@icloud.com)

Web: [www.smallpawsathome.co.uk](http://www.smallpawsathome.co.uk)

## Local Literary Landscape

Ivinghoe Parish is blessed with many talented people and in this edition of the Beacon Magazine we are lucky to be able to share some of our local literary talent with you. This should help you get your summer holiday reading sorted out anyway!

## Local Author keeps it short...

Andrew Dicker, one of the locals behind the successful Ivinghoe Together campaign to save the village from two large housing developments, has turned his talents to writing! His first collection of short stories, *'The Seduction of Celia'*, was published on Monday 29th February.

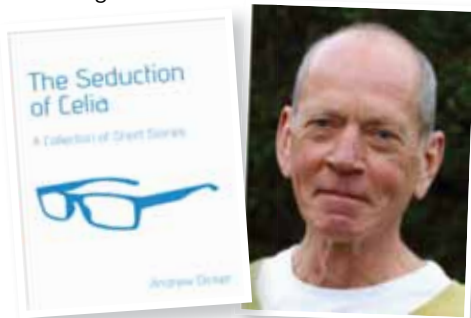
Andrew retired from a 30 year career in the NHS and embarked on a writing project, because it is something he had always wanted to do, but never had the time. He says, "During my professional life I wrote a number of articles for journals and was asked to contribute chapters to books on medical ethics, postgraduate education and mental illness. After retiring from the NHS in 2013, I embarked on a writing project to learn how to write fiction and then do it having always found the process of writing absorbing and fulfilling. Many of the sources of the material in the stories are drawn from experience."

Andrew's writing embraces the many complexities that life often offers, love

and relationships, bereavement and the grieving process. The impact of drug addiction and mental health issues are also highlighted and some of the powerful stories examine the empowerment of women and the role of motherhood.

Andrew's book is available in hard back (£11.99), paperback (£5.99) and ebook (£3.50) and can be bought from all high street bookshops and Amazon, or directly from the publisher, Austin Macauley.

Andrew's second volume of short stories, *'Overlapping Lives'*, will be available from 29th June this year. The stories are a series of inter-related characters and plots, set partly in Buckinghamshire.



## A new book about Pitstone Windmill

Pitstone Windmill has stood in its field for at least 400 years and is well known to local people. It is also known as the oldest dated post mill in England. Its survival into the 21st century can be attributed to a group of enthusiastic volunteers, most of them from Pitstone and Ivinghoe and the surrounding area, who took on the mammoth task of restoring the mill, saving it from destruction.

A newly published book, Pitstone Windmill "C the Rescue of an Ancient Landmark", describes the history, restoration and mechanical workings of the mill and for the first time, gives recognition to the members of the restoration committee who worked so hard. Over seventy illustrations in the book, most of them colour, including photographs (historic and modern) and 3-D drawings made by the draughtsman John Brandrick. These stunning drawings show the construction and workings of Pitstone Windmill more clearly than ever before.



Pitstone Windmill "C the Rescue of an Ancient Landmark" is published by the National Trust in association with the Choir Press and is priced at £8. The official book launch is planned for Saturday 14 May 2016 (National Mills Weekend) at Brookmead School, Ivinghoe. However, readers who can't until then can pick up a copy of from Ashridge Visitor Centre or from [Amazon.co.uk](http://Amazon.co.uk)

**Roger Hillier**



## Third outing for Pitstone Author's Crime Fiction Duo

Pitstone's very own best selling author Dave Sivers has released the third in his series of crime fiction novels set in Aylesbury Vale and featuring Detective Inspector Lizzie Archer and Detective Sergeant Dan Baines.

The first two novels in the popular series both reached the top three in the Amazon Kindle 'Serial Killers' chart.

In *Evil Unseen*, a reformed teenage gang leader is gunned down in cold blood and an angry Baines, who knew the victim well, reckons he knows who is responsible. But Lizzie Archer wants to know the identity of the mystery man who died with him – and whether he was intended victim or innocent bystander.

When an officer from the National Crime Agency turns up and declares the case off limits to Archer and her team, it's clear that there is more going on than meets the eye. Several conflicting agendas are in play, the body count is rising, and Archer and Baines realise that the only people they can truly trust are each other.

Dave is known locally as the village correspondent for the *Bucks Herald* and *Leighton Buzzard Observer*. He is a founder of the local BeaconLit literary festival and appears at and visits a number of other events throughout the year.

He says the two central characters and the authentic setting are two of the key ingredients in the series' success.

"I know from the many positive reviews, and from emails and social media comments that people enjoy the Archer and Baines novels as much for the characters themselves as for the mysteries they have to solve.

"Readers who know the local area also enjoy reading about places they know and also trying to spot the places they think fictitious villages are based on."

Archer and Baines have literally put Aylesbury Vale on the crime fiction map. Blogger Tracey Walsh has compiled a comprehensive map of locations and their fictional detectives at

<https://crimereaderblog.wordpress.com/2015/01/02/have-they-got-you-covered-crime-fiction-map-of-the-uk/>

The Archer and Baines novels are available from Amazon in paperback and Kindle ebook. You can keep up with Dave and his books at [www.davesivers.co.uk](http://www.davesivers.co.uk)

### Dave Sivers



## WINDMILL PHARMACY

Come and visit our lovely fresh pharmacy in Ivinghoe!!

A friendly efficient service with a smile



OPENING HOURS:

19-21 HIGH STREET, IVINGHOE, LU7 9EP  
TEL: 01296 706 280

MON - FRI 8:30am - 6pm (CLOSED 1-2PM)  
SATURDAY 9AM TO 5PM



## GROVE FARM PYO

Open from approx mid June to mid October

Pick Your Own Soft Fruit, Vegetables and Potatoes

### Opening Hours

Monday – Saturday 10am – 6pm (last entry 5.15pm)

Sunday 9am – 1pm (last entry 12.15pm)

For more information visit [www.grovefarmpyo.co.uk](http://www.grovefarmpyo.co.uk)

or ring 01296 668175 in June

# Make a Will

AND LASTING POWERS OF ATTORNEY

**YOU DECIDE**, who is to run your affairs, who gets what, guardians etc, not the State.

**MINIMISE RISK** of Inheritance Tax and the disinheritance of children.

**Best Price Guarantee**  
from specialist Solicitors and professional Will Writers since 1999

For a **DAYTIME** or **EVENING** appointment call  
**01525 220644**  
[www.wischoicewills.co.uk](http://www.wischoicewills.co.uk)

## Protect Your Home 100%

from  
**CARE FEES**  
 and  
**PROBATE COSTS**



Will Trusts & Probate Practice  
*A wise choice*

**FREE HOME VISIT**

**MAKING A WILL HAS NEVER BEEN EASIER**




- Flexible, weekly fully furnished lets
- Ideal for people working in the area, on holiday or needing a stop gap between houses

Whatever your situation, we can offer fully equipped self catering accommodation




Town Farm • Ivinghoe  
 Leighton Buzzard  
 Beds. LU7 9EL  
 T: 01296 668 455  
[info@letsunlimited.com](mailto:info@letsunlimited.com)  
[www.letsunlimited.com](http://www.letsunlimited.com)

## TOWN FARM



Town Farm • Ivinghoe • Leighton Buzzard • Beds LU7 9EL

*A new campsite right at your doorstep!*



T: 07906 265435  
[www.townfarmcamping.co.uk](http://www.townfarmcamping.co.uk)

### The Village Health Centre

Yardley Avenue, Pitstone LU7 9BE  
[www.pitstonesurgery.co.uk](http://www.pitstonesurgery.co.uk)

**Dr J R Bell, Dr Tisha Patel**  
**Dr Stephanie Johnston, Dr Kirsten Riemer, Dr Heather Counsell**


**Opening hours 9.00am-12.00pm 2.00pm-6.00pm (Fri 2-5pm)**  
 The Village Health Centre serves Pitstone, Ivinghoe and surrounding villages.

Friendly, modern and spacious dispensing village Practice offering a wide range of health services including coils/implants, minor surgery, travel advice, in house blood tests, on-line appointments and repeat prescription ordering. Four nurse Practitioners offering acute clinics with same day appointments. Also, midwife, health visitors in attendance. Local District Nurse Service. Long established training Practice with a rotation of qualified doctors.

Large car park

New patients are welcome. Please contact our reception staff or visit our website for more information.

**Telephone 01525 223211**      **[www.pitstonesurgery.co.uk](http://www.pitstonesurgery.co.uk)**



**BELLOWS MILL  
EATON BRAY**

Attractive short term and overnight accommodation in idyllic surroundings of old water mill. Licensed for civil wedding ceremonies and receptions for up to 80 guests. Small meeting room.

For details phone 01525 220548  
 or email [reservations@bellowsmill.co.uk](mailto:reservations@bellowsmill.co.uk)



**W Roff Agricultural Services**

- Hay & straw for sale
- Paddock maintenance
- Fencing

 **07909 680807**  
 ELSAGE FARM, CHEDDINGTON

# The end of an era in Ivinghoe

On Wednesday 6th April the funeral of Miss Rosemary Elliott was held in St Mary the Virgin Church. Rosemary was known by all as Jane and lived in the old shop opposite the church. She lived alone and after she closed the shop in about the year 2000 rarely ever came out. She inherited the business from her mother. The shop had been run by the family for at least 150 years and probably 200. This is the end of an era for Ivinghoe.

Although her neighbours, a nephew and a few friends looked out for her and delivered food parcels she lived an isolated life for her final years. Unable to accept help from anyone outside this small trusted circle she never allowed visitors into her home. We shouldn't simplify a complex situation but it seems likely that she was embarrassed about the conditions in which she lived. It is astonishing and very sad that in this age she had to manage without hot water or heating, living without a kitchen, bathroom or inside toilet.

For many years she held the church keys and each day opened and locked the building. Even during her reclusive years she watched the church from her bedroom window and would phone if she observed a burial in the churchyard to find out who had passed away. The 16th century clergyman and poet John Donne wrote the well-known poem beginning 'No man is an island' which concludes 'Never send to know for whom the bell tolls; it tolls for thee' observing that we are all poorer when even an unknown stranger dies because



**Rosemary Elliott**

10th November 1939 – 31st January 2016

we all involved with each other.

Although Jane lived and sadly died alone many came to the parish church to mourn her passing. For many years she was part of our lives and we were part of hers. Are there other solitary or lonely figures in our community who perhaps lack even the friends who cared for Jane? These neighbours are also part of us and we are part of them. We all have a responsibility to notice and care.

**Revd Adrian Manning** Vicar of Ivinghoe, Pitstone, Slapton and Marsworth

## Forthcoming St Mary's Church, Ivinghoe events:

### May

**Monday 2nd May 2-4pm**

Tea and Cakes in Church

**Sunday 15th May 6pm**

Beacon Choir Concert

### June

**Saturday 11th June**

Ivinghoe Fete on the Lawn

### July

**Sunday 10th July**

Tea and Cakes with the Ridgeway Ensemble in Church

### August

**Sunday 7th 2-4pm**

Tea and Cakes in Church

**Monday 29th 2-4pm**

Tea and Cakes in Church

### St. Mary's Church Pitstone 2016

The Historic 13<sup>th</sup> Century Church in Church Road Pitstone will be

Open Every Sunday Afternoon and on Bank Holidays in the Summer Months

2.30-5.30pm from May 1<sup>st</sup> - October 30<sup>th</sup> 2015

One of the most enjoyable jobs for our volunteers is to spend a pleasant afternoon in the church or sitting in the beautiful church yard awaiting visitors. We have a faithful band of Stewards who will open the church and welcome visitors. It is free to visit, although the Churches Conservation Trust which looks after the church is very pleased to receive donations for its maintenance. It is a pleasant situation and a very interesting church, so if you have not yet made its acquaintance do try to pay a visit this year.

### The Festival of Art, Craft, Flowers and Music 2016

The annual late Spring Bank Holiday Festival of Art, Craft, Flowers and Music will take place on May 28<sup>th</sup>, 29<sup>th</sup> and 30<sup>th</sup>. This is always a very popular event and the delicious home-made cakes and refreshments will be available as usual. Make a note of the dates.

Saturday May 28<sup>th</sup> from 2-6pm

Sunday May 27<sup>th</sup> from 11am-5pm and at 6pm evensong with Ivinghoe church choir

Monday May 28<sup>th</sup> from 11am-6pm

If you would like to join the rota of Sunday Stewards or help with the Festival arrangements, we will welcome you. We are currently seeking someone to oversee the craft section of the Festival over the weekend. Please contact the Chairman of our local Friends of Pitstone church if you can help.

A key is held in Church Road for anyone who would like to visit the church when it is closed, please phone Jean on 662151 if you would like to visit. The church is still consecrated and can be used for weddings, funerals or baptisms when required. It is a beautiful location and can also be used for exhibitions or concerts.

Gill Arney, Chairman The Friends of Pitstone Church

Tel: 01296 668 123

# St. Mary's Church Pitstone

The historic Church at Pitstone will be spring cleaned at the end of April ready for the summer Sunday visitors. **Helpers are welcome!**

Thanks to a great team of volunteer stewards we are again able to open the Church every Sunday and Bank holiday afternoon 2.30 - 5.30pm from May-October. The Church can be visited at other times by contacting the key holder at **01296 661968**.

There is a colourful and informative leaflet in the church which will enrich your visit so why not take a walk to this beautiful little Church and explore the heritage on our doorstep during the summer?

The Churches Conservation Trust is keen for Pitstone Church to be the focus of interest in the locality and we are being encouraged to make the church a starting point for a few more events during the year as well as the Festival which takes place at the end of May (and for which cakes will be needed!)

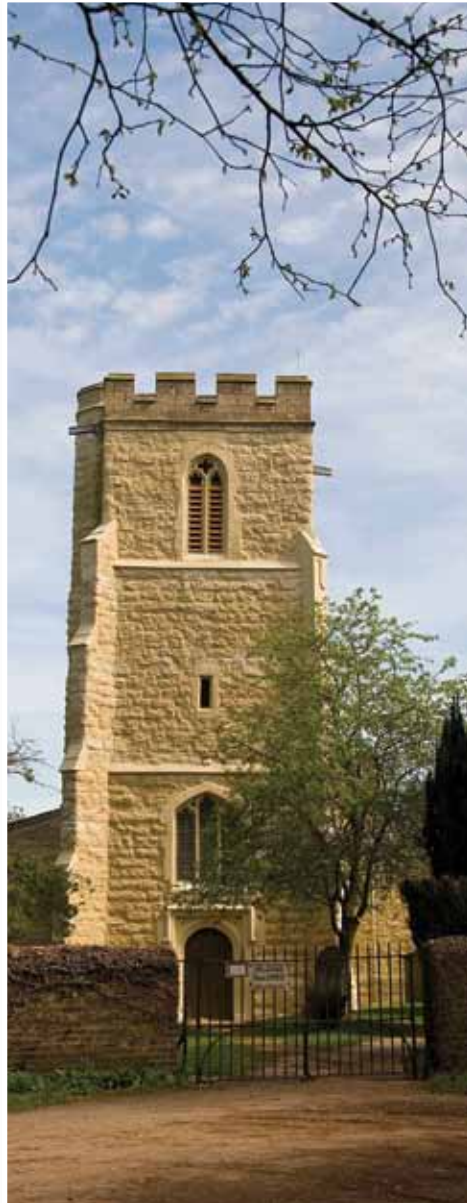
We have the annual concert on Saturday 9th July at 7.30pm

These inspiring concerts began 17 years ago and raise money for both Ivinghoe and Pitstone Church buildings.

We hope to arrange another event from the Church later this year to raise funds for the newly installed water pipe to the Church yard which we hope will be a useful facility in the future.

The group of Friends of Pitstone Church welcome new members, if you would like help in anyway or need to know more, please ring Gill Arney on **01296 662151**.

**Revd Adrian Manning**



## ***Ivinghoe & Pitstone Chapel Fellowship***

***We are a small and friendly group of local Christians who meet to worship God in a fairly informal way, in song, in prayer and with messages brought by a variety of local preachers.***

***We meet on Sunday mornings at 10.30 in the Millennium Room at Pitstone Memorial Hall for services that last about an hour, followed by social chat over a cup of tea or coffee.***

***All are welcome  
why not come and join us?***

***Want more information?  
01296 668005***

# St. Mary's Church Pitstone Annual Festival of Art, Crafts, Flowers and Music 2016

The 36th Festival of Art, Crafts, Flowers and Music will be held at Pitstone Church on:

**Saturday May 28th at 2-6 pm**

**Sunday May 29th at 11am-5pm  
followed by sung evensong at 6pm**

**Monday May 30th at 11am-6pm**

The popular Home made refreshments will be available every day and the event will definitely be one to attend.

If you are new to the area or have not yet discovered the beautiful 13th Century Church, this is a good

weekend to visit. You will receive a warm welcome and may be inspired by the beautiful works of art, music and refreshments you will find there.

Look out for the signs around the village in May and write the dates in your diary.

St.Mary's Pitstone is still licensed for services which take place two or three times a year and is available for funerals, weddings and baptisms when required.

The Church is in the hands of the Churches Conservation Trust and a small local group of Friends. If you would like to join the Friends or help with the festival or run an event in the Church please contact Gill Arney on **01296 662151**.

- ✓ Carpet & Upholstery
- ✓ Contract Cleaning
- ✓ Communal Areas
- ✓ Patio & Driveway
- ✓ Interior Windows

Call today for a free, without obligation quotation  
01442 250679 / 07952 544666  
[www.murrayscleaningservices.co.uk](http://www.murrayscleaningservices.co.uk)

**ESTABLISHED IN 2002**  
Murray's Cleaning Services, 19 Broom Hill, HP1 2JD  
N&M BROWN TRADING AS MURRAY'S CLEANING SVS

## Beacon Community Choir

### Misa Criolla

Ariel Ramírez

An exuberant mass in the tradition of Argentinian folk music

### Songs of Sanctuary

Karl Jenkins

A popular work evoking the colours and rhythms  
of a global musical language

**Sunday 15th May 2016, 6pm**  
**St Mary the Virgin, Ivinghoe**

Beacon Chamber Ensemble \* musical director Judith Sheridan

Tickets £10 (children free) from Lindsay Hewlett  
01296 660670 [lhewlett@btinternet.com](mailto:lhewlett@btinternet.com) or on the door

Beacon  
community choir

## Ivinghoe Allotments **from the Plot**



**Ernie will be back to his Plot in the next edition...  
WATCH THIS SPACE!**

## **Tales** (of the unexpected) **from the Compost Heap**

Lately, tales of strange goings-on in the horticultural world have come to my attention. I had always regarded gardening as an activity which pushes the boundaries, but had not appreciated till recently quite how far those boundaries had gone.

Did you know, for example, that "atomic gardening" was very much the thing some years ago? This involved subjecting plants and seeds to radioactive substances for brief periods of time, in order to bring about mutations and thereby create new generations of weird and wonderful plants. Researchers devised unusual methods to achieve the desired effects, including strapping packets of seeds to the insides of x-ray machines, and even venturing into the fall-out zones of nuclear testing sites.

It seems that science has moved on since then, to somewhat more sophisticated but equally strange practices. In a dome containing soil from the Atacama desert in Peru, Nasa researchers have recreated (they think) the conditions to be found on Mars, in an

attempt to see if the humble spud can be grown there. There are apparently grounds to believe that Mars will be colonised by potatoes, before it is colonised by man.

Talking of grounds, it now seems that coffee grounds have entered a new phase in their application. Resourceful folk have discovered that they can be changed in some way to provide a means of powering cars. Presumably one would need an awful lot of coffee grounds for this.

An alternative, and much easier way of re-using ones coffee grounds is to subject them to the alchemy of the compost heap. Simply add the grounds (or, for that matter, tea leaves if that's your tippie, and all manner of other kitchen waste) to your garden heap. Mix it around a bit, cover if necessary, and wait. The results, in their own way, will be just as spectacular.

**Barbara Cummings**, Master Composter  
[www.recycleforbuckinghamshire.co.uk](http://www.recycleforbuckinghamshire.co.uk)

# R.M.L

## Tree services



- **Tree Felling & Shaping**
- **Hedge Cutting**
- **Stump Grinding**
- **Site Clearance**
- **Logs**

**City & Guilds**  
**NPTC**

**FULLY  
INSURED**

**Licenced  
Waste  
Carrier**

Contact Robert on:

Daytime: **07585 007109**

Evening: **01296 661508**

email: [rmlservices@outlook.com](mailto:rmlservices@outlook.com)

## From Carpet to the Green...

Having enjoyed Indoor and Short Mat bowls through the winter, and been inspired by the World Bowls on BBC2 in January, our bowlers eagerly await a return to bowling in the sunshine on their beautiful green at Cheddington's Recreation Ground on the High Street.

The outdoor season starts on April 24th. The Green is open for new bowlers to Give Bowls A Go each Tuesday (2pm) and Friday (6pm) from May to September.

Wayne Rooney may be on £350,000 a week, but it cost a new bowler less than

a £1 a week to become a member of Cheddington Bowls Club.

Where can you find a better combination of value and fun, for we provide an excellent all year bowling and social event calendar.

With love from 'Jack' **01525 220644**.

More information contact the Club Secretary, Tony Duke on: **01525 220644** or visit our website **www.cheddingtonbowls.org.uk**

**Tony Duke**

## Plumb it all

**Professional Plumbing and Heating Engineer**  
**Gas Safe Registered**

**Full Central Heating Systems**  
**Gas & Oil Boiler Servicing**  
**Bathroom Installations**  
**Small Jobs happily undertaken**

**Ring Richard on:**  
**01296 709961 or 07720 265645**  
**email: rick@plumbitall.eu**



**DON'T THINK YOU HAVE MOVES?**

So, you're not a dancer. We only have one thing to say to that - **WHO CARES!**

Just come to a class and move!

**JAZZERCISE**

**DANCEMIXX • INTERVAL • STRIKE • FUSION • STRENGTH • CORE**

<b>Cheddington Village Hall</b> Monday 7pm Tuesday 9.45am  <b>Pitstone Memorial Hall</b> Wednesday 7.30pm	<b>Wilstone Village Hall</b> Mon & Wed 9.30am Tue 6pm Low Impact Thu (Lo) & Fri 9.45am Sat 9.30am	<b>Goldfield Infants School Tring</b> Tue & Thu 7.30pm  <b>Nora Grace Hall, Tring</b> Wed 11.30am Lite class
--	---	--

Keri Donnellan - 07900 987230 Email: jazzercise1@hotmail.co.uk  
www.facebook.com/jazzerciseBucksBedsHerts



**GROOMS FARM SHOP**

**FRESH MEAT & POULTRY**  
**FREE RANGE EGGS & VEGETABLES**  
**CHEESE, OLIVES, PIES, PATÉS & NUTS**  
**FREE LOCAL DELIVERY**

**OPENING TIMES**  
Thursday 9.00 - 12.30  
Friday 8.30 - 5.30  
Saturday 8.30 - 12.30

Orders can be placed outside these times by telephone

**WILLOWDENE FARM**  
**IVINGHOE**  
**TEL: 01296 668326**

**IVINGHOE TURF**

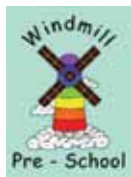
**Suppliers of**

- Turf
- Bark
- Topsoil
- Grass Seed
- Fertiliser



**www.ivinghoeturf.co.uk**  
**01296 661939**  
**sales@ivinghoeturf.com**

# Windmill Pre-School



We hope you all had a great Easter. We are very much looking forward to the Summer Term. The year is just flying by! We are pleased have opened the doors to a number of new starters and their families this term as well as welcomed back lots of familiar faces.

We are so pleased that our setting continues to be a popular choice – our sessions for the run up to the summer holidays are now full and our waiting list for September continues to increase. As we are so popular, it's never too early to get your child's name down on the waiting list. For more information, please contact Claire our Administrator at [admin@windmillpreschool.co.uk](mailto:admin@windmillpreschool.co.uk).

We've got some great activities planned for the children plus a couple of fundraising opportunities for you to get involved with and we look forward to having your continued support. Let's hope that the sun appears soon and we can make the most of the warmer weather and our outdoor spaces.

## Fundraising

As this edition goes to print, preparations are underway for our annual Sponsored Walk around Ivinghoe and the windmill. This is always a great opportunity for parents and grandparents to join us and walk with their pre-schoolers. Fingers crossed the weather will be kind to us.

Our Pre-School is one of Waitrose in Berkhamsted's chosen charities of the month. When you check out at the till, you can choose a number of local

charities to give your green coins to. If you happen to be shopping there before the end of the month, please donate in to our box and depending on how many coins we get, our Pre-School will get a share of £1,000 for much needed funds.

On May 14th, we will be having Photography by Carrie back to Windmill for a Family Photo Session. Sessions are available if you would like the opportunity to have some fabulous competitively priced photos, especially as it's Father's Day coming up soon.

For the end of the Summer Term, we have a Textile Recycling initiative organised as well as our annual Sports Day and Graduation which is always a great finish to the academic year.

As always, you can help us raise funds for free when you shop online with Easyfundraising. It is a great way to raise money for Windmill Pre-School and doesn't cost you a penny! Shop online from over 2,700 retailers using the website [www.easyfundraising.org.uk](http://www.easyfundraising.org.uk) and they'll give a donation to us every time you buy something at no extra cost to you or the pre-school. With Christmas fast approaching and inevitably lots of things to buy, you really could help make a difference.

## Transition sessions

Our twice weekly transition sessions continue for children leaving the setting to go up to school in September. This has proved to be a very valuable opportunity in helping them with their independence and basic skills required

for Foundation Stage. They will be visited by the Foundation teacher from Brookmead in the second half term and will also have a couple of settling in sessions at the school once their place is confirmed.

## Annual General Meeting

This year the AGM is being held on Tuesday, 10th May in the Pitstone Memorial Hall Meeting Room. We will be reviewing the year's events, some committee members and officers

standing down whilst new committee members join. Everyone is welcome to attend and we would be delighted to see you there.

**Thank you to everyone for your continued support.**

**Lara Rutherford** Chair,  
Voluntary Management Committee,  
Windmill Pre-School

## Ivinghoe & Pitstone's Windmill Pre-School

Windmill Pre-School in Ivinghoe is one of the top pre-schools nationally and highest rated locally

*"Children make excellent progress in all areas of their learning and development because staff plan an outstanding range of activities..."*

*"Children have fun and are purposefully engaged in all areas of this dynamic setting. They make excellent progress as staff recognise them as unique individuals..."*

Source: Ofsted report June 2011

<b>Morning session:</b>	<b>9am-12pm</b>
<b>Afternoon session:</b>	<b>12pm-3pm</b> (includes Lunch Club)
<b>Lunch Club:</b>	<b>12pm-1pm</b> (subject to availability)

We welcome all children between 2 and 5 years from Pitstone, Ivinghoe & surrounding areas to our purpose-built premises behind Brookmead School five full days per week

**IT'S NEVER TOO EARLY TO REGISTER YOUR CHILD**

For further info and to arrange a visit for you and your child please contact us:  
[admin@windmillpreschool.co.uk](mailto:admin@windmillpreschool.co.uk) or 01296 661031 (during sessions)

**[www.windmillpreschool.co.uk](http://www.windmillpreschool.co.uk)**

Registered Charity No. 1032380



## Bucks Open Studios invites Brookmead Budding Artists!

A group of pupils from Brookmead School will be joining College Lake Artists, an exciting Group of Artists and Makers, at College Lake Nature Reserve during Bucks Open Studios from 11-26 June.

It is the first time a primary school has been part of BOS. Artists and College Lake Staff are proud and delighted to have the Brookmead school community participating.

Working with experienced artist and teacher, Catherine Smith, the children will be creating an outdoor installation outside overlooking the lake. Pupils will be guided through a creative process drawing on their interests and imagination that will include brainstorming, researching, documenting through images and recordings, experimenting, developing and critiquing.

The teaching and learning with this group of children will reflect the school's mission statement and have as its focus nurturing the individuality of these pupils to develop confidence, self-esteem, independence, resilience and problem-solving skills, as well as collaborating effectively.

As installations depend on audience participation, the pupils are inviting parents, friends and members of the community to an art-making workshop at College Lake during the event on Sunday the 12th of June. Details to be posted on the College Lake Artists website: [www.collegelakeartists.weebly.com](http://www.collegelakeartists.weebly.com) and Facebook page: College Lake Artists.

**Cathy Smith says** "I am very excited to be working on this project and hope it will enable the children to develop confidence, independence, improved communication

*skills and an enthusiasm for the visual arts that will stay with them throughout their lives."*

Katherine Douglas, Head Teacher, is delighted that Brookmead is involved in this exciting community project that will provide such rich learning opportunities for our children. "We look forward to celebrating our achievements with the wider community both as part of College Lake Artists and at the Brookmead School Exhibition on 23 - 25 June."

Bucks Open Studios is the largest visual arts event in the county; over 500 artists and makers open their studios and run free exhibitions and events for the public to visit, in over 200 different venues across Buckinghamshire.

For more information see [collegelakeartists.weebly.com](http://collegelakeartists.weebly.com) or contact **Louisa** at [collegelakeartists@gmail.com](mailto:collegelakeartists@gmail.com)

For information about school involvement in BOS please contact Cathy at [info@artistcatherine.co.uk](mailto:info@artistcatherine.co.uk)

**Louisa Stobbs**



## P. DYER ELECTRICAL

*For all your Electrical & Testing & Inspection needs*

- Re-wires
- Testing & Inspection
- Security Systems/Lighting
- LED & Low Energy Lighting
- Decorative Lighting
- PAT Testing
- Fuse Boards
- Fault Finding/Repairs

Fully insured, Part P registered, all work guaranteed.  
Fast, friendly, reliable, local electrician. For a free, no-obligation estimate, call Paul on:



**Tel: 01525 222109**  
**Mobile: 07850 682815**



**Tring Market Auctions**

Independent Fine Art & Chattel Auctioneers and Valuers. Est 1832

**Auctioneers & Valuers of Fine Art,  
Antique Furniture & Collectables**

*Fortnightly General Sales of General Furnishings & Effects*

*Antique Furniture & Fine Art Sales*

*Total & Part House Clearance Specialists*

**If you can't find it here you won't find it anywhere!**

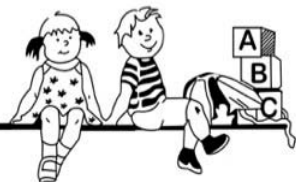
**Buying or Selling, contact us on 01442 826446**

The Market Premises, Brook Street, Tring, Herts HP23 5EF

Website: [www.tringmarketauctions.co.uk](http://www.tringmarketauctions.co.uk)

Email: [sales@tringmarketauctions.co.uk](mailto:sales@tringmarketauctions.co.uk)

## Marsworth Pre School



Marsworth Millennium Hall, Vicarage Road, Marsworth HP23 4LR  
Tel: 07506 179658 Email: [enquiries@marsworthpreschool.org.uk](mailto:enquiries@marsworthpreschool.org.uk)

Marsworth Pre-School, held at Marsworth Millennium Hall, is a very popular village pre-school with an outstanding reputation, attracting children from a wide area.

Sessions available for ages 2 to 5 years, **FULL** or **PART** days:-

Monday, Wednesday, Thursday & Friday

Morning Session:- 9.00am - 11.30am

Lunch Club:- 11.30am - 12.30pm

Afternoon Session:- 12.30pm - 3.00pm

For further information, details of funding, session availability or to arrange a visit, please call 07506 179658 or visit our website [www.marsworthpreschool.org.uk](http://www.marsworthpreschool.org.uk)

### 1<sup>st</sup> Ivinghoe & Pitstone Scouts Group.


Group Scout Leader. Keith Steers

Email: [ksteers@aol.com](mailto:ksteers@aol.com)

Telephone; 0789-9696722



<b>WaterMill Beavers, Monday</b>	<b>6 pm – 7 pm.</b>	<b>Windmill Beavers Tuesday</b>
<b>Leader Andrew Broad</b>		<b>Leader Keith Steers</b>
<b>Windmill Cubs, Wednesday</b>	<b>6.30 pm – 8.00pm</b>	<b>Watermill Cubs Thursday</b>
<b>Leader Rob Haddock</b>		<b>Leader, Rob Mercel</b>
<b>Scouts Meet Fridays at 7.30 pm – 9.00 pm Leader, Andrew Woods.</b>		



## Brookmead School

Headteacher: Katherine Douglas

### Bringing Learning to Life and Life to Learning

Our school is located in the beautiful Chiltern hills, which is something to be celebrated and shared. Established in 1967, Brookmead School provides a happy and stimulating environment that promotes an enjoyment and love of learning. We aim to enable all our children to reach their full potential, both as learners and as valuable members of our school and wider community.

Brookmead School is a Foundation Primary School for children aged 4 - 11 and serves the communities of Ivinghoe, Pitstone (including Castlemead) and Marsworth.

For further information or to arrange a visit please contact Mrs Kerr on 01296 668543 or email [office@brookmead.bucks.sch.uk](mailto:office@brookmead.bucks.sch.uk).

**Brookmead School, High Street, Ivinghoe, LU7 9EX**  
[www.brookmead.bucks.sch.uk](http://www.brookmead.bucks.sch.uk)

## Leighton Plumbing & Heating



**Oil boiler servicing, repairs and installations.**

**All other aspects of plumbing & Heating undertaken.**

11 Woodman close  
Leighton Buzzard  
Beds.  
LU7 3nu

**Please see our reviews and pricing on the boiler juice / myboilerservice website.**

**01525 385250 / 07774567472**

Oftec registered & Insured [Leighton-plumbing@ntlworld.com](mailto:Leighton-plumbing@ntlworld.com)



**Support with  
Confidence**  
BUCKINGHAMSHIRE COUNTY COUNCIL

Under a new national system known as Self Directed Support you can choose the kind of help you receive and who you get it from. Your support will be more flexible and responsive and you can use different services in your local area to help you live as independently as possible for as long as possible. Even if you are funding your own care, flexibility and choice is vital to getting the services that you need and trust.

Support With Confidence provides a list of businesses and individuals who have been successfully approved having undergone the appropriate training and background checks, including:

- ✓ Financial & trading history
- ✓ Enhanced DBS check for criminal record
- ✓ Qualifications, training & experience
- ✓ References
- ✓ Interview
- ✓ Compliance with legal requirements
- ✓ Agree to Code of Conduct and Terms & Conditions of the scheme.

#### Who can join Support With Confidence?

- Independent Support Planners and Brokers
- Self-Employed Personal Assistant
- Home or Domiciliary care
- Meal preparation / shopping
- Mobile hairdresser
- Dog walking / pet sitting
- Complimentary therapies
- Cleaning / housework
- Wheelchair friendly transport
- Legal services
- Daytime activity operators
- Any other care & support in the community

Contact: [chwalton@bucksc.gov.uk](mailto:chwalton@bucksc.gov.uk) or 01296 382298 or [www.bucksc.gov.uk](http://www.bucksc.gov.uk) (search 'Support With Confidence').

## The Blindman

Curtain and Blind Specialists

Curtains . Poles . Tie Backs . Cushions

Roller . Pleated . Woodslat

Woven . Vertical . Venetian

**Huge choice of fabric  
or supply your own**

Free friendly advice and quotation in the comfort  
of your own home

**01442 822 055 & 07767 783 955**

**[www.theblindman.uk.com](http://www.theblindman.uk.com)**

## Panache interiors

- Soft furnishings for your whole home or simply one room
- Supplying bespoke curtains, blinds, loose covers, cushions, tracks & poles and lots more
- Complete service including design, fabric samples, measuring, making up and fitting

*Sandra Ford*

T: 01296 660868

E: [sandra@panache-interiors.com](mailto:sandra@panache-interiors.com)

[www.panache-interiors.com](http://www.panache-interiors.com)

## James B Chadburn FBHI Fine Antique clocks & Barometers

Specialist in repairs & restorations.

Valuations & clock finding service.

Advice & assistance on formation & disposal of private clock collections.

Quality clocks/barometers Bought & sold.



**Telephone 01525 221165**

**Mobile 07790 000629**

**E-mail: [info@jameschadburn.com](mailto:info@jameschadburn.com)**

## FIRST THURSDAY FRIENDS

*Friendly chat, board games for those who wish and a choice of cake with endless tea or coffee at just £2.*

### ALL WELCOME

*On the first Thursday of each month at 2p.m. in the Millennium Room at Pitstone Memorial Hall*

*We plan to reintroduce film shows on alternate months as soon as possible.*

**Want more information?  
01296 668005**

## The Heritage Park Pitstone Green Museum

Our first open day of the year had an unwelcome guest in the form of storm Katie. Luckily for us, the storm abated in time for our customers to enjoy a wonderful, if rather muddy, day out.

Over two hundred people braved the mud and had a great day out. We could not have any tractor rides due to the ground conditions, but remarkably only five people got stuck in the car park and were easily freed by the tractor, lots of fun for the kids!

If you haven't been before, you will be amazed at the fantastic facility right on your doorstep. The museum is run by the Pitstone and Ivinghoe Museum Society, known as PIMMS. They hold meetings on the 4th Thursday of each month when a speaker will talk about a topic of interest for an hour or so, starting at 8pm. Visitors are always welcome.

**26th May is a walk across Dancers End Nature Reserve, 23rd June will be a talk about Dunstable Priory and 28th July will be a Cheese Wine and Antiques evening with Stephen Hearn, for which advanced tickets are required.**

Any queries about the museum or its activities should be addressed to the manager, via the website at [www.pitstonemuseum.co.uk](http://www.pitstonemuseum.co.uk)

*We look forward to seeing you soon!*

Pete Farrar



# MARSWORTH STEAM & CLASSIC Vehicle Rally

Historic Steam Engines, Agricultural, Classic Cars, Bikes and Trucks

**Sunday 19<sup>th</sup> June 2016 11am-5pm**

Treat Dad to a fun day out on Fathers Day!

	<p><b>Ice Cream Popcorn Candy Floss Fish &amp; Chips Teas, Snacks and Homemade Treats</b></p>	
<p><b>Family entertainment</b> Stalls galore! Charity Fundraising Auction Arena entertainment Live music Crafts Working models</p>	<p><b>Beer tent</b> Local Real Ales</p>	<p><b>and just for the kids</b> Face painting Tring Fire Engine* Steam Engine rides Bouncy castle and slide Kiddies fairground fun and much more!</p>

**FREE Shuttle Bus**

**Startup Farm**  
Marworth HP23 4LL

8489 Ivinghoe to Aston Clinton Road

**Vintage of course!**  
See our website for  
route and times

**Adults £5.00  
Children £2.00**

\*Subject to duty commitments  
All proceeds go to local fundraising and charities

**[www.MarworthSteamRally.co.uk](http://www.MarworthSteamRally.co.uk)**

Stall, trade and exhibitors enquiries: [info@MarworthSteamRally.co.uk](mailto:info@MarworthSteamRally.co.uk)

# MENTMORE Arts FESTIVAL

## ART LOVERS FLOCK TO MENTORE

The 8<sup>th</sup> Mentmore Arts Festival will be held from Saturday 28<sup>th</sup> May to Monday 30<sup>th</sup> May 2016, open each day from 11am to 5pm.

Over the last few years this event has become increasingly popular both locally and further afield with over 1,000 visitors and in excess of £16,000 worth of art sold in 2015. The Committee continue to hone their organisational skills to ensure that the Festival delivers an exciting experience with new and fresh art alongside the regular exhibitors who have become firm favourites.

The twin venues of St Mary's Church and Mentmore Village Hall provide attractive settings and with the refreshment marquee next to the Hall, a morning or afternoon can be spent appreciating art and enjoying a coffee, light lunch or perhaps a Pimms or two.

We have over 60 artists exhibiting, displaying a variety of work including paintings, photography, glass work, ceramics and cabinetry.

Not only does the Mentmore Arts Festival promote local art but it also raises money for local charities. To date the impressive total of £41,500 has been donated and everyone who supports the Festival, whether by showing art, buying art or just attending the event, should be proud of this achievement. The key charity for 2016 is Rennie Grove Hospice Care.

Please visit our website at [www.mentmore-arts-festival.co.uk](http://www.mentmore-arts-festival.co.uk) for further information and a preview of the artists for 2016.

# MENTMORE Arts FESTIVAL

The 8th Mentmore Arts Festival will be held in Mentmore Church and Mentmore Village Hall. We are raising money for Rennie Grove Hospice Care, local charities and the church.

**MENTMORE CHURCH  
& MENTMORE VILLAGE  
HALL – LU7 0QF**

**SATURDAY 28 MAY  
SUNDAY 29 MAY  
MONDAY 30 MAY**

**For more information visit:  
[www.mentmore-arts-festival.co.uk](http://www.mentmore-arts-festival.co.uk)**

## **COME AND ENJOY EXHIBITION & SALE OF ART**

- PAINTINGS • PRINTS
- PHOTOGRAPHS
- SCULPTURE • GLASS
- POTTERY

**PLUS... TEAS IN  
THE VILLAGE HALL  
GARDEN**

**RAFFLE WITH  
GREAT CASH  
PRIZES**

**OPEN  
11am-5pm**

## **ADMISSION**

**ADULT ENTRY**

**£2.00**

INCLUDES CATALOGUE

CHILDREN (UNDER 16)  
**FREE**

## **CAN YOU HELP?**

**CONTACT**

DEBORAH HALL:

**07831 707023**

[deborahhall58@yahoo.co.uk](mailto:deborahhall58@yahoo.co.uk)

# Bucks Historic Churches Trust – Ride & Stride 2016



Would you like to visit some unique historic buildings, see beautiful countryside, get some exercise and have fun with your family and friends?

Ride & Stride 2016 is on Saturday 10th September, sponsored cyclists, walkers and horse riders all over the country will be visiting as many beautiful churches and chapels as they can between 10am and 6pm to raise money for the repair and restoration of these lovely buildings. The money they raise helps to save historic churches, chapels and meeting houses for future generations by helping to fund urgent repairs and the installation of modern facilities. In our area alone, there is no shortage of fantastic churches, chapels and meeting places to visit from Halton Church with its War Graves, St Mary's Northchurch with the grave of Peter the Wild Boy and the tiny St Martha's in Tring with its floral altar kneelers. Half the money raised will go to a chosen church or chapel and the other half will go into a fund that the Bucks Historic Churches Trust (an organisation run largely by volunteers) is able to distribute to churches and chapels of any Christian denomination that need help.

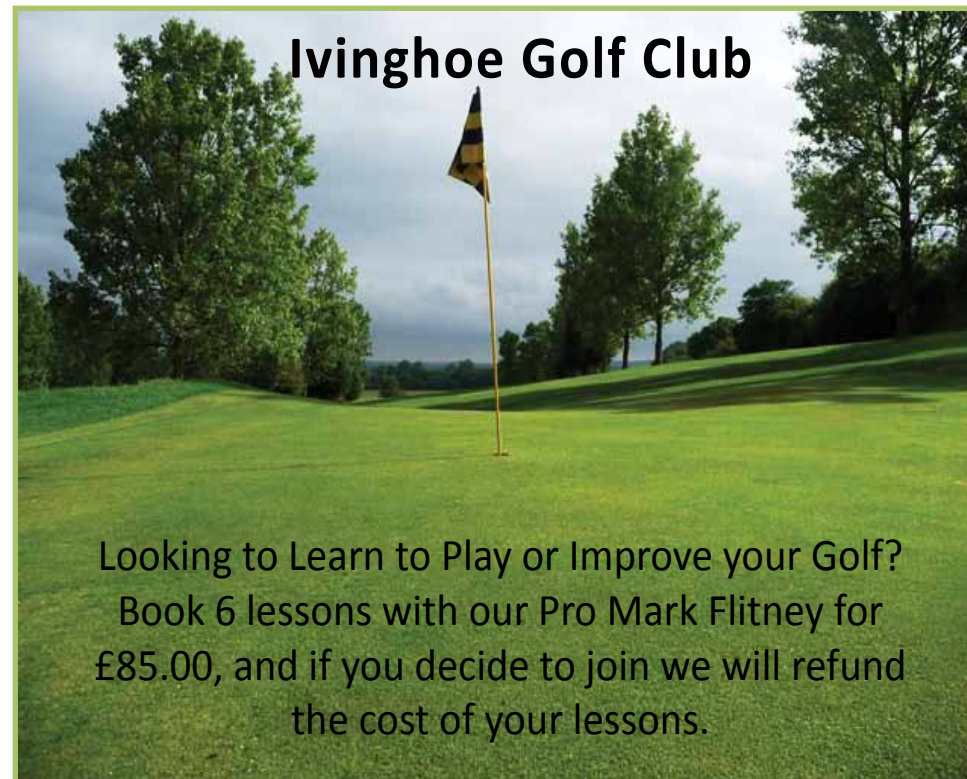
Last September, our walkers and riders raised an amazing £679.26 for Ivinghoe Church and I was very pleased to be able to hand over a cheque for half that money to the Church Wardens. We are now on the lookout for people who could take part in the sponsored event this year to raise money for our churches and for the Bucks Historic Churches Trust. As this is a country-wide event, churches in neighbouring Herts and Beds will be open and information on these churches can be found on-line at [www.beds Hertshct.org.uk](http://www.beds Hertshct.org.uk). Many of the manned churches offer refreshments, toilet facilities and information about the church. If you don't fancy riding or walking but can spare an hour of your time on Saturday 10th September, we also need volunteers to welcome people to our local churches and offer refreshments.

If you would like to ride, walk or volunteer your time to help in a church, please contact the relevant person below:

For Ivinghoe Church: Izzy Robinson on **01296 660724**; Alex Wynne on **01296 668336**; or Mary Cook on **01296 662530**.

For Slapton Church: Bridget Lewis on **01525 220790**.

**Izzy Robinson**



- Various Adult Membership schemes available starting from less than £8.00 per week.
- Junior Membership £99.00 or only £20.00 with a Parent holding 7 day Membership.
- Turn up and play Green Fees from £10.00 for 9 holes.

Discount Golf Shop with the largest selection of equipment in the area



For further details contact:  
Pro Shop: Tel: 01296 668696  
Clubhouse: Tel: 01296 668696  
E-mail: [info@ivinghoegolfclub.co.uk](mailto:info@ivinghoegolfclub.co.uk)  
[www.ivinghoegolfclub.co.uk](http://www.ivinghoegolfclub.co.uk)

Looking for a local Venue for a Party?



Our Clubhouse is available for private hire for birthdays and celebrations.

Ivinghoe Golf Club, Wellcroft, Ivinghoe, Nr. Leighton Buzzard, Beds, LU7 9EF

The King's Head, Ivinghoe 01296 668388

Birthdays ?  
Anniversaries ?  
Getting married ?  
Just getting together .....



Don't forget our  
Bon Appetit Luncheon Menu  
(Mon—Sat) @ £21.95  
Perfect for ladies who lunch!

The King's Head is YOUR village's  
fine dining restaurant.

Celebrate in style and let us make your  
special occasion one to remember!

The King's Head  
"Welcome Card"

15% discount Monday to  
Thursday evenings and many  
more benefits.  
Call 01296 668388  
to claim yours



[www.kingsheadivinghoe.co.uk](http://www.kingsheadivinghoe.co.uk)



*Do you want a local reliable*

**PLUMBER**

*that you can trust?*

*Installation of bathrooms, kitchens, washing machines,  
taps, radiators, towel rails etc.*

*Call John Byrom in Pitstone 07860 340 130  
Email: [john@johnbyromplumbing.co.uk](mailto:john@johnbyromplumbing.co.uk)*

Looking to visit New Zealand...



For help with creating the best itinerary for you please call or email us

- Experienced Kiwi Specialist Agent
- Friendly, honest advice from an independent travel agency
- Specialist in tailor-made holidays to destinations worldwide
- Extensive experience to arrange every detail
- Using fully bonded tour operators
- No booking fees



Travel Impressions

*A World of Experience*

**01442 890265**

[enquiries@travelimpressions.co.uk](mailto:enquiries@travelimpressions.co.uk)  
[www.travelimpressions.co.uk](http://www.travelimpressions.co.uk)

Suite 4, George House, 64 High Street, Tring, Herts. HP23 4AF

## From District Councillor Avril Davies



**Avril Davies**

County and District Councillor  
<http://avrildavies.mycouncillor.org>

### May 5th and June 23rd. Are you registered to vote?

The March referendum on Pitstone neighbourhood plan was indeed a tremendous success with 1127 votes in favour of the plan and 39 against. A 49% turnout is high for any local election and in the top 5 for Aylesbury Vale. But it could have been higher. Nearly as many people as voted against the plan came to the polling station and found they weren't registered to vote.

For several years now registration has to be done individually, not by household. But you can register and be entitled to vote at any time, not just once a year. Although you don't have to take your polling card to the polling station in order to vote, if you don't get one, or if only one person in your household gets one, it's a good indication you are not on the register.

To check your registration and register call **01296 585807**. To register on line [www.gov.uk/register](http://www.gov.uk/register) to vote. For more information [www.aboutmyvote.co.uk](http://www.aboutmyvote.co.uk)

### Slippage on our local road maintenance program

It's been a very disappointing to see work scheduled for 2015 slipping to mid year 2016. I've been sent a provisional timetable for work on the B488 Ivinghoe to Horton in stages from April to June, June to August and July to October 2016. Work is also due on the Beacon Road and Main Road South Dagnall.

### Cheddington railway bridge closure

I have been informed but not officially that the repairs currently being undertaken to the bridge are only a temporary fix and that more work is scheduled for later in the year. I have been meeting with the decision-makers at Bucks county council to impress upon them the fragility of the network in this division in an attempt to force some joined up thinking for the future.

### The A4146 through Dagnall

Edlesborough and Northall is to become the B440 shortly after the completion of the A5/M1 link but no progress has yet been made on putting weight limits on the B488 at enforceable points to prevent the displacement of HGVs to the west rather than the M1.

### Bucks county council chief executive retires

Chris Williams retired at the end of March after 15 years in the post. I am one of the small interview panel recruiting a new chief executive in mid April.

### Avril Davies

County Councillor, Ivinghoe Division.

## From District Councillors Sandra Jenkins and Derek Town

A bit of good news. After almost two years and many e-mails, Bucks County Council have agreed to repair the railings at Cooks Wharf bridge although it is disputed as to who is actually responsible for the maintenance in the future, but it is for their Legal services to sort out. However, in the meantime it was decided that this needs to be repaired and the lead time for this is June.

### AVDC have launched an anti-littering campaign:

In March Aylesbury Vale District Council set up a display in Market Square, Aylesbury, to showcase the amount of litter dropped in the town centre throughout the day. The displays highlighted the problems litter creates and helped promote AVDC's anti-littering message: 'Bin in or take it home.'

The council has to spend £350,000 each year picking up dropped litter from streets, main roads, parks and open spaces around Aylesbury Vale.

AVDC's Cabinet Member for Environment and Waste said: "A substantial part of our budget has to be set aside each year to clean up litter as it's not only an eye sore but can also become a real health hazard. We'd much prefer to spend this money improving services and facilities for residents, rather than having to pay for expensive and preventable clean-up operations. The problem is made yet more acute as our budget is under ever increasing



pressure with our funding from central government soon due to disappear altogether."

As well as AVDC clean-ups various voluntary groups around the Vale support these initiatives.

### Update on AVDC becoming a unitary authority

AVDC Cabinet Member for Business Transformation, Cllr Janet Blake, has called for the county's local authorities to get round the table and discuss a unitary future for Buckinghamshire.

Recent comments from Buckinghamshire Country Council's former chief executive have reignited the debate on unitary authorities, something AVDC was very keen to progress at the end of 2014 – when a Bucks Business First report gave four options, concluding that doing nothing was not an option.

"There's no doubt that our residents and communities are not getting the best deal under the current two tier system, where county and district councils deliver different services. It's not cost effective and lends itself to ►

duplication and confusion,” said Cllr Blake – leader of AVDC.

89% of unitary authorities in England have been formed by district councils and AVDC commissioned an LG Futures Report, last year, which concluded that two unitary authorities for Bucks – north and south – was a viable option. This model would see a unitary authority in the north providing a complete package of both district and county services for residents of the Vale. A southern unitary would do the same for the rest of the county.

“We shared this report with other district leaders in the county but found there was no appetite to progress discussions. As a councillor for both the county and the Vale, I truly believe that having two unitaries in Bucks is the way forward. Whatever the outcome, I’d urge leaders to start talking.

“Our wonderful Vale is very different from the rest of the county – we’re predominantly rural but with current

housing needs will grow our population to around 250,000 over the next 20 years. We need councillors that are democratically accountable for providing all services for this area. It’s not just about value for money it’s also very much about localism,” added Cllr Blake.

### Potholes

We have had complaints regarding the potholes in the roads – please report on the Transport for Bucks website. We know the roads maintenance budget is stretched but we have many cyclists on our rural roads and these potholes can be a danger.

**Derek Town – 01296 661637**  
**dtown@aylesburyvaledc.gov.uk**

**Sandra Jenkins – 01296 668587**  
**sjenkins@aylesburyvaledc.gov.uk**

District Councillors for Pitstone and Cheddington Ward

### Dear Dog Walkers of the Parish

The walks round here are nice, we think you’ll all agree,  
 And many people comment, on the views being so pretty.  
 But sometimes on the path you walk, you look and you do see,  
 A squidgy thing you stepped on, is something that’s sh \*\*y.

So we kindly ask you, when Rover needs a poop,  
 You make a little effort; you simply bend and scoop,  
 And have a thought for fellow (wo)man, do not commit a sin,  
 You know you need to pick it up, and put it in the bin!

(The Dog Warden can be contacted on 01296 555605)

## Pitstone Car Scheme



Pastor Dave Clifford

‘The Chapel Fellowship’

Tel:- 01296 668906 Mob:- 07737 350183

Email: davidclifford954@btinternet.com



**DO YOU have difficulty travelling to hospital or other healthcare appointments?**

**CAN WE help?**

Pitstone Community Car Scheme is a new scheme offering a service for residents who have difficulty travelling to healthcare appointments.

The scheme is run by volunteers who use their own cars to drive residents to local hospitals or other healthcare appointments (for example, the opticians, dentist or physiotherapist).

There is a small charge for the service to cover the volunteer’s petrol and car parking expenses. To make it easier, a set tariff has been worked out in advance for typical journeys to local hospitals. If you need to access healthcare in another town, eg Hemel Hempstead, the cost will be advised at the time of booking the trip.

Example costs (excluding car parking):

DESTINATION	COST £
TRING	£3.00
STOKE MANDEVILLE	£7.00
CHESHAM	£6.50
L & D HOSPITAL	£7.00
AMERSHAM	£8.50
HIGH WYCOMBE	£14.00
JOHN RADCLIFFE	£17.50
NUFFIELD, OXFORD	£17.50

**COORDINATOR  
NEEDED!**

**DRIVERS  
NEEDED!**

In some circumstances, we may be able to undertake hospital trips to the John Radcliffe or Nuffield hospitals. Please contact the number below if you are having difficulty accessing transport to these hospitals.

The volunteer will usually wait while the appointment is taking place, and then take the resident home. However, there may be circumstances where the return trip is much later or another day. In this case, each journey will be classed as return – as the volunteer will need to return to Pitstone using their own vehicle and petrol.

These charges are exceptionally good. The trips are being undertaken by volunteers so, at present, these cannot be extended to include appointments other than healthcare. Also, there is no guarantee of an available volunteer driver, but we will do all we can with the volunteer resources we have. Please give as much notice as you can.

If you have difficulty travelling and would like to use this service to help you get to a hospital or other healthcare appointment, please telephone

**Dave Clifford on 01296 668906.**

# the haldi restaurant

**Wednesday Night  
is Taster Night!!**

**WHY NOT TRY SOMETHING DIFFERENT?**

**MIXED STARTERS**  
**CHEF'S SELECTION:**  
**LAMB**  
**CHICKEN**  
**KUFTA**  
**MIXED VEGETABLES**  
**RICE**  
**NAAN**  
**COFFEE**



**£12.95\***  
**per  
person**  
\*Based on minimum of 2 people

80 Marsworth Road, Pitstone, Buckinghamshire LU7 9AS

Telephone **01296 662204 / 661223**

[www.thehaldipitstone.co.uk](http://www.thehaldipitstone.co.uk) [www.facebook.com/thehaldirestaurant](http://www.facebook.com/thehaldirestaurant)

Open 7 days a week including Bank Holidays

Sun-Thurs Noon-2.00pm • 5.30-10.30pm

Fri & Sat Noon-2.00pm • 5.30-11.00pm

## Your local Councillors:

### Cllr Karen Groom

Areas of Responsibility: Allotments, Beacon Magazine, Beacon Villages Library, Conservation Area, Footpaths and Bridleways, Parish Maintenance, Ivinghoe Aston Village Hall, Lawn Hire, Lawn and Trees, National Trust/Chiltern Soc., Planning Add: Willowdene Farm, Ivinghoe, LU7 9EA  
Tel: 01296 668 326  
Email: [karengroom@hotmail.co.uk](mailto:karengroom@hotmail.co.uk)



### Mrs Bridget Knight

Clerk to Ivinghoe Parish Council  
Add: Parish Office  
38 Rushendon Furlong  
Pitstone Buckinghamshire  
LU7 9QX  
Tel: 07960 605393  
Email: [ivinghoeparishclerk@gmail.com](mailto:ivinghoeparishclerk@gmail.com)



### Claire Bamber

Add: Bruce Grove House, Great Gap. Ivinghoe. LU7 9DZ  
Tel: 01296 668134  
Mob: 07711 107 114  
Email: [claire.bamber@btinternet.com](mailto:claire.bamber@btinternet.com)



### Avril Davies

County and District Cllr Ivinghoe Division  
Add: The Old Bakehouse  
Chequers Lane Pitstone LU7 9AG  
Tel: 01296 668 152  
Email: [acdavies@buckscc.gov.uk](mailto:acdavies@buckscc.gov.uk)



### Ruth Benton

Areas of Responsibility: Education Liaison, Local Area Forum, Planning, Playgrounds (Ivinghoe Aston), Neighbourhood Development Plan, Police Liaison, Streets, Street Lights and Highways (including Traffic Calming)  
Add: Ty Cyngor, 10 High Street, Ivinghoe Aston, LU7 9DP  
Tel: 01525 222730  
Email: [TyCyngor@gmail.com](mailto:TyCyngor@gmail.com)



### Cllr Sandra Jenkins

Tel: 01296 668587  
Email: [sjenkins@aylesburyvaledc.gov.uk](mailto:sjenkins@aylesburyvaledc.gov.uk)



### Andrew Dicker

Areas of Responsibility: Allotments, Finance, Town Hall Committee  
Add: The Old House, 38 Station Road, Ivinghoe, LU7 9EB.  
Tel: 01296 668444  
Email: [andrew.dicker31@gmail.com](mailto:andrew.dicker31@gmail.com)



### Chris Poll

District Cllr Edlesborough Ward  
Add: 43 Gooseacre  
Cheddington LU7 0SR  
Tel: 01296 663 737  
Email: [cpoll@aylesburyvaledc.gov.uk](mailto:cpoll@aylesburyvaledc.gov.uk)



### Stephen Lott

Areas of Responsibility: Footpaths and Bridleways, Ivinghoe Aston Village Hall, Local Area Forum, Playgrounds (Ivinghoe), Police Liaison, Town Hall Committee  
Add: 2 Yew Tree Close, Ivinghoe, LU7 9ET.  
Tel: 01296 668897  
Email: [sjl@linley-lott.me](mailto:sjl@linley-lott.me)



### Cllr Derek J Town

Tel: 01296 661637  
Email: [dvtown@aylesburyvaledc.gov.uk](mailto:dvtown@aylesburyvaledc.gov.uk)



**Pitstone & Ivinghoe Entertainments Present**

# **The 2016 Black Tie Summer Ball**

**Saturday 18th June, Ivinghoe Lawn**

**Sumptuous three course meal**

**Live music from 'Back Beats'**

**Reception drinks and bar opens at 7.00pm**

**Dinner at 7.45pm**

**Tickets £60 each - available from**

**Louise on 07733 263223 or**

**email [ivinghoeentertainments@gmail.com](mailto:ivinghoeentertainments@gmail.com)**



**[www.facebook.com/ivinghoeents](https://www.facebook.com/ivinghoeents)**



**[@ivinghoeents](https://twitter.com/ivinghoeents)**

**<http://ivinghoeentertainments.org.uk>**

**Entertainment by the Community, for the Community**

**Profits to be divided amongst community groups and teams**