

# Ash-cum-Ridley Parish Council

AUTUMN 24

*Serving the local communities of Ash, Hodsoll Street, New Ash Green & Ridley*

## Solar Farm Meeting

**Wednesday 13th November at 7:30pm**

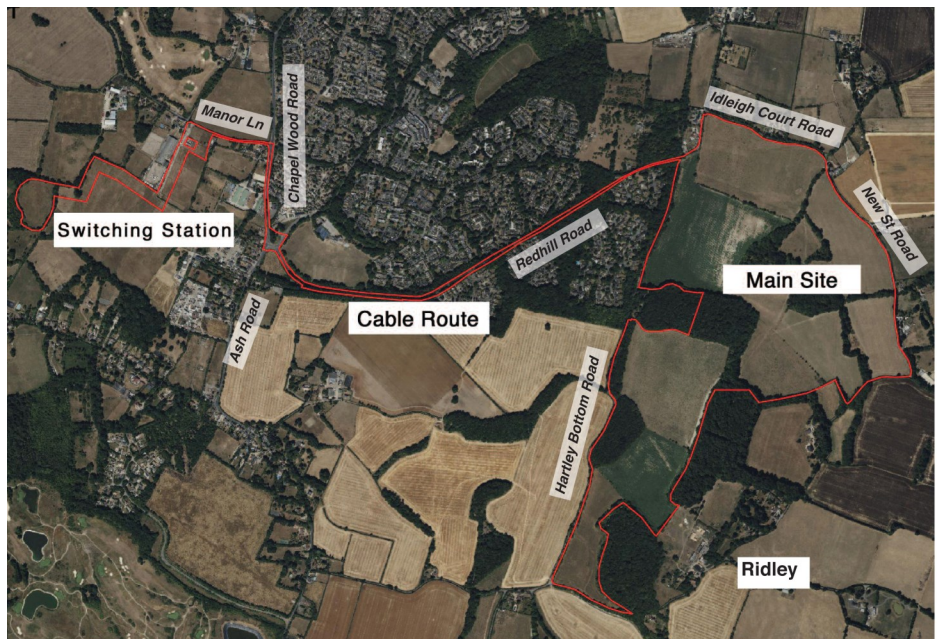
A public meeting has been scheduled for **Wednesday, 13th November**, at 7:30 pm to discuss the proposed New Ash Green Solar project. The meeting will be held at New Ash Green Youth and Community Centre and will be moderated by the Parish Council.

The meeting will provide residents with an opportunity to learn more about the project and raise any concerns or questions they may have. The format will be as follows:

- **Introduction**
- **Presentation by New Ash Green Solar**
- **Pre-submitted Questions**
- **Open Q&A Session**, moderated by the Parish Council

### Submit Your Questions:

Residents are invited to submit questions in advance of the meeting. Please send your questions via email to [enquiries@ashcumridley-pc.gov.uk](mailto:enquiries@ashcumridley-pc.gov.uk) by Wednesday 6th November at 12pm. Pre-submitted questions will be addressed during the session. The meeting aims to provide answers to Residents' questions and offer a structured format for all who wish to attend.



### Register for Email Bulletin

If you would like to receive the Bulletin digitally instead of a hard copy then please sign up by going to <https://forms.gle/kzBLYapfUm9bnDda9> or use the QR Code.



### Become a Trustee for the Almshouse

The Parish Council is looking for two individuals to serve as trustees for the almshouse. This is an opportunity to contribute to the local community by helping manage the almshouse and ensuring its smooth operation.

If you are interested in representing the Parish Council in this role, please get in touch with us for more details.

### Remembrance Service

The Parish Council will hold its annual service at **Ash War Memorial** on **Monday 11<sup>th</sup> November**. Please gather at 10.45am. A 2-minute silence will be observed at 11.00am, followed by tea and coffee with all donations going to the poppy appeal.



PARISH COUNCIL WEBSITE: [www.ashcumridley-pc.gov.uk](http://www.ashcumridley-pc.gov.uk)

PARISH CLERK: 01474 702760

EMAIL: [enquiries@ashcumridley-pc.gov.uk](mailto:enquiries@ashcumridley-pc.gov.uk)

## New Ash Green Arts Community

### Arts Exhibition

# A closer



Affordable art for sale  
Music  
Tea & cakes

Saturday 2nd and  
Sunday 3rd November  
10AM - 4PM

#### Workshops

Saturday AM - Gel printing  
Saturday PM - Tactile art  
Sunday AM - Lego art

Meet the artists  
Sunday 2PM - 4PM

Booking essential - email [nagartscomm@gmail.com](mailto:nagartscomm@gmail.com)

Free admission  
& Parking

New Ash Green Youth  
& Community Centre DA3 8JY

## Older Persons Information Event

### Older Persons Information Event

#### What is it?

EXPERT ADVICE from organisations offering support & information to older people.

FREE EVENT & FREE REFRESHMENTS

#### Where is it?

Village Hall  
New Ash Green  
Centre Road  
DA3 8HH

#### When is it?

10:00am – 12:00pm  
Tuesday 29th  
October

Meet New People. Stay Informed. All Welcome.

For More Information Please Contact:



Jackie West – KCC Community Warden  
07811 271259 or [jackie.west@kent.gov.uk](mailto:jackie.west@kent.gov.uk)



Carol Gardner – Community Navigator  
07436 205371 or [carol.gardner@imago.community](mailto:carol.gardner@imago.community)



## New Affordable Homes at the Former Salts Farm Depot

We are pleased to let you know about the Local Lettings & Sales Plan (LLP) for nine of the new affordable homes at the former Salts Farm Depot in Fawkham, to be known as Old Halt Close. The homes are expected to be ready in December 2024/January 2025 and will be managed by West Kent Housing Association.

There are six homes for Affordable Rent, 4 x 1 bedroom/2-person flats and 2 x bedroom/3-person flats.

There are three homes for Shared Ownership, 2 x 2 bedroom/3 person houses and 1 x 3 bedroom/5 person house.

The LLP aims to help meet the identified local housing need for affordable housing in Fawkham Parish (the Primary Parish) and the parishes of Hartley, Ash-cum-Ridley, West Kingsdown and Horton Kirby & South Darenth.

Anyone interested in the homes for Affordable Rent must be on the Sevenoaks District Housing Register. Eligible applicants will then be able to bid for the homes when they are advertised on Kent Homechoice later this year. To apply to the Housing Register, please see Sevenoaks District Council's Website and search apply to join the housing register or telephone the Housing Register team on 01732 227000 or email at [housing.register@sevenoaks.gov.uk](mailto:housing.register@sevenoaks.gov.uk)

Anyone interested in the Shared Ownership homes should contact the West Kent Sales Team at [sales@wkha.org.uk](mailto:sales@wkha.org.uk) or telephone 01732 749900.



## Free Christmas Family Fun Day at Ash Green Sports Centre



A festive poster for a Christmas Family Fun Day. The background is light blue with snowflakes and a red and white striped Christmas stocking on the left. The text is in various colors and fonts. At the top right, it says 'SATURDAY 14TH DECEMBER 2024' and '2 SESSIONS / 10AM-12PM AND 1PM-3PM'. The main title 'FREE CHRISTMAS FAMILY FUN DAY' is in large, bold, red letters. Below the title, a green circle contains '14 DEC'. To the right, the location is listed: 'Ash Green Sports Centre, Milestone School Site, Ash Road, New ash Green, DA38JZ'. Logos for Kent County Council, Ash Green Sports Centre, and Ash cum Ridley Parish Council are at the bottom.

SATURDAY 14TH DECEMBER 2024  
2 SESSIONS / 10AM-12PM AND 1PM-3PM

# FREE CHRISTMAS FAMILY FUN DAY

14 DEC

Ash Green Sports Centre,  
Milestone School Site  
Ash Road  
New ash Green  
DA38JZ

Kent County Council  
kent.gov.uk

Ash cum Ridley Parish Council

ASH GREEN SPORTS CENTRE

### \*NEW\* Mum and Baby Class

We are excited to announce we have a NEW Mum and Baby fitness class starting at Ash Green Sports Centre on a Friday morning from 11.15-12pm. If you are interested and would like to find out more or book a space then please contact the Sports Centre on 01474 707164 or email [info@ashgreensportscentre.co.uk](mailto:info@ashgreensportscentre.co.uk)



A flyer for a Mum and Baby Fitness class. It features a photo of a woman in a pink top and black leggings performing a plank exercise on a purple mat, with a baby sitting nearby. The text includes 'Come exercise in a baby friendly environment. Low/ medium impact class with the benefit of baby interaction and involvement. Babies 0 - 12 months'. It also mentions 'ASH GREEN SPORTS CENTRE Fridays 11.15-12.00' and 'FIRST CLASS FREE!'. At the bottom, it says 'All abilities welcome here! To find out more information contact Ash Green Sports Centre'.

Come exercise in a baby friendly environment. Low/ medium impact class with the benefit of baby interaction and involvement. Babies 0 - 12 months

ASH GREEN SPORTS CENTRE  
Fridays 11.15-12.00

## Mum and Baby Fitness

FIRST CLASS FREE!

All abilities welcome here! To find out more information contact Ash Green Sports Centre

The Parish Council have secured a grant from KCC and with this we will be running a FREE Christmas Family Fun Day on Saturday the 14th December 2024. There will be two sessions running from 10am-12am and another from 1pm-3pm. There will be a bouncy castle, music, games, decorating activity tables and more, plus Santa may even pop by for a visit. Please follow for updates on this event on the Parish Council Facebook and Website as to when booking will go live and any additional information regarding activities. We hope to see loads of you there.

### Rackets Offer for October Half Term

Our £1 racket offer is back at Ash Green Sports Centre through the October Half Term up until 5pm each day.

Come along to play Squash, Table Tennis, Badminton and Tennis for only £1 per person when a member of the group is under the age of 18.

This will be able to be booked at <https://ashgreensportscentre.clubright.co.uk/memberarea/bookings> or use the QR code.



**NEW ASH GREEN SOUTH EAST WARD:** Councillors Roxana Brammer, Jill Clucas, Chris Gorton, Anna Jauch, Mark Manley, Isabel MacLeod

**NEW ASH GREEN NORTH WEST WARD:** Councillors Matt Aspinall (Vice Chair), Carol Clark (Vice Chair), Sarah Hobbs, Shaun Fishenden (Chairman), Pat Kirtley, Vusi Ngwenya

**ASH WARD:** Councillors Jake Scott, George Pender

**HODSOLL STREET & RIDLEY WARD:** Councillors Frank Cottee, Margaret Howie

PARISH COUNCIL WEBSITE: [www.ashcumridley-pc.gov.uk](http://www.ashcumridley-pc.gov.uk)

PARISH CLERK: 01474 702760

EMAIL: [enquiries@ashcumridley-pc.gov.uk](mailto:enquiries@ashcumridley-pc.gov.uk)

## Imago Support for Charities and Community Groups

Imago are delighted to be providing support to frontline not-for-profit organisations including registered charities, CICs and community groups in Sevenoaks and the surrounding areas. This is being achieved through funding from Kent Community Foundation. Organisations can access bi-monthly networking meetings, a newsletter, one to one sessions focusing on your organisation's individual needs and training opportunities. If you are involved with a not-for-profit as a trustee, director, volunteer, staff member or other role and would like to know more about how we can help or to join one of our networking meetings, please contact Lysette D'Urso at

[charitysupport@imago.community](mailto:charitysupport@imago.community)

Imago provides support and opportunities to people, families, and communities across Kent, East Sussex, Medway and South London. Our services focus on improving health and wellbeing, tackling loneliness, building social and educational opportunities, and helping people access the right support. To find out more go to

<https://www.imago.community/>



## Join the CCTV Network

### Ash-cum-Ridley CCTV NETWORK

**Fed up with crime, anti-social behaviour and fly tipping within the Parish?**

***Here is how you can help make a difference***



Ash-cum-Ridley Parish Council needs homeowners and businesses with CCTV, doorbell cameras, dash-cams and even wildlife cameras to come forward and form a Parish-wide network.

Once we have the information of where cameras are located, the locations will be stored on a secure database by the Parish Council. If there is an incident of crime, anti-social behaviour or fly-tipping reported, the owners of the cameras in the immediate vicinity will be contacted and given a time frame and any other relevant information, so that they can check their footage for evidence. We may then ask you to burn the footage off or arrange collection of the footage by Police or the Council.

We hope by establishing this network we can help to speed up the evidence-gathering process and aid in securing prosecutions for incidents that occur in the parish. The information stored on the database will be kept secure in line with GDPR and the database will only be accessed for the purposes set out above by either the Parish Office, Sevenoaks District Council (Community Safety Unit/ Environmental Enforcement Team) or Kent Police.

Residents are understandably concerned with the present issues we are facing. The Parish Council believes if we can come together as a community and support the Police with quicker gathering of evidence, we should get these crimes dealt with more efficiently and improve the chances of prosecution. Our network may also help discourage such crime, anti-social behaviour and fly-tipping in the area.

***We kindly ask those people who have cameras to come forward and build this network with us. We thank you for your support.***

You can receive a form to complete by downloading one from <https://forms.gle/at4GKZq8sVZsYrRMA> or by emailing [enquiries@ashcumridley-pc.gov.uk](mailto:enquiries@ashcumridley-pc.gov.uk) or telephone 01474 702760

**Ash-cum-Ridley  
Parish Council**

## Macmillan Coffee Morning

Our instructor Jo White ran a Macmillan coffee morning at Ash Green Sports Centre with many of our lovely members attending to enjoy coffee and cake. We would like to thank everyone for their donations.



**MACMILLAN  
CANCER SUPPORT**

## Dog Waste

We would like to remind all dog owners in the area that failing to clean up after your dog is not only unpleasant for others, but it is also against the law. Those caught not disposing of their dog's waste properly can face fines.

To make it easier for everyone, we've attached a QR code below. Scanning the code will show you a map of all the dog waste bins available in New Ash Green, so you can easily find the nearest one when out walking your dog.

Let's all work together to keep our community clean and safe for everyone.



## How to Report the use of NOS Cannisters

You can report antisocial behaviour by contacting your local policing team through <https://www.police.uk/>

Call 101 to contact the police and report a crime that is not an emergency.

You can also contact Crimestoppers to report a crime anonymously. They will pass the information about the crime to the police at [www.crimestoppers-uk.org](http://www.crimestoppers-uk.org)

Telephone: 0800 555 111

## Parish Council Office Opening Hours

**Opening hours to the public:**

Monday-Thursday : 9:30 - 12pm

Friday - Sunday: CLOSED