

Hamble-le-Rice

VILLAGE MAGAZINE

OCTOBER 2019

Harvest Hamble Allotments

Issue 329

Published by Hamble-le-Rice Parish Council and distributed free throughout the Parish and at
www.hambleparishcouncil.gov.uk

Hamble marquee hire

*Marquee hire, all types of catering, temporary bars,
furniture hire and luxury toilets for
Weddings, parties, corporate events and all occasions.*



www.rumshack.co.uk

Call us on 02382182458 for information

email enquires to ian@rumshack.co.uk

Council News

There was no need to hold a meeting during the Council's summer recess, although since the last Council News there are a number of important planning matters to report.

As indicated in the last Village Magazine, Eastleigh Borough Council's (EBC) Local Area Committee (LAC) considered a planning application at the end of July from GE Aviation for 148 dwellings on its car park and sports field. The Borough Council's planning officer recommended its approval despite acknowledging it was against some of its saved Local Plan policies. The Parish Council submitted strong opposition to this application with its Chair and Chair of its Planning Committee speaking at the meeting setting out a number of reasons why it should not go ahead. Eastleigh Borough's LAC decided, after hearing representations from the community and GE, to defer the decision until a later date for further work to be carried out to provide more information on a number of issues. It is understood that this will likely to be considered again in the

new year.

The Parish Council also heard that the Judicial Review regarding 70 homes in a field opposite Riverside Park in Satchell Lane has been dismissed. The Borough Council refused an outline application for this site but after an appeal by the developers, a Planning Inspector overturned EBC's decision. EBC sought a judicial review of the Planning Inspector's decision, but it has been dismissed so we are now waiting for the developers to submit a detailed planning application.

A Planning Inspector's examination hearing of EBC's proposed new Local Plan will commence on Thursday 21st November at 10am at the Millennium Suite, Botleigh Grange Hotel, Grange Road, Hedge End.

At the last Council meeting there were three applicants to fill the vacancy on the Parish Council by co-option, as there was not a request for a by-election. After considering what each candidate had to offer, Sharon Hayward was appointed as your new councillor to serve for the last 8

Hamble-le-Rice Parish Council

Memorial Hall, High Street, Hamble-le-Rice, Southampton SO31 4JE

Telephone: 023 8045 3422 (Office) or 07402 648 050
07949 160 885 (Grounds Team)

Email: clerk@hamblepc.org.uk / asstclerk@hamblepc.org.uk
headgroundsman@hamblepc.org.uk

The Parish Office is now open Monday to Friday
10am to midday and 2pm to 4pm (except Bank Holidays)

Hamble-le-Rice
VILLAGE MAGAZINE

Advertising & Editorial Enquiries: 023 8045 3422 / vmag@hamblepc.org.uk

DEADLINE FOR NOVEMBER ISSUE: 3pm, Wednesday 16th October


The views represented in contributions submitted are not necessarily those of the Parish Council's or the editor. The editor and Parish Council accept no responsibility for goods or services advertised.



A monthly drop-in advice session, first Wednesday of the month at The Mercury Library & Community Hub. 10am -1pm

Helen Joyce D.O.
Osteopathy

In the comfort of your own home



07594 643500
helengmjoyce@gmail.com
helenjoyceosteopathy.co.uk

PLAN PROPERTIES

FOR ALL THOSE JOBS AROUND THE HOUSE

BIG JOBS, SMALL JOBS, NO PROBLEM

KITCHENS, BATHROOMS, PLUMBING, TILING, CARPENTRY, PAINTING & DECORATING, ELECTRICS, FLOORING, FLAT PACK ASSEMBLY

40 YEARS EXPERIENCE

WE CAN ALSO LOOK AFTER THE MAINTENANCE OF YOUR RENTAL OR HOLIDAY LET

CALL ROGER ON 02381 784855 07500 707254 OR EMAIL roger.gunn1@btinternet.com

HAMBLE SPA ROOM

An experience to experience
Offering

- Full range of Espa Face, Body treatments & Body wraps
- Airbase makeup – a flawless finish for that special day - Wedding/Proms etc
- Various Massage techniques, including Hot stones
- Lycon Wax – the best wax for a comfortable waxing experience
- Luxury Manicure - Pedicure – Shellac
- Hamble Spa Room 'Ready & Wrapped' gift vouchers available.

Call Sonia – 07727 461008 or visit the web site – www.hamble-spa.co.uk
22 Deanfield Close, Amy Gardens, Hamble, SO31 4JJ

Hamble Oil Terminal

Serving the local community

Contact Justyn Willsmore
BP Hamble Public Affairs - 023 8045 6028



Council News (continued)

months of the Council prior to the election for a new one in May 2020. Sharon has lived in Hamble for 10 years and she is a marketing consultant. The Council was very pleased with the interest shown by each applicant and they all had the qualities to be appointed as a councillor.

Over the summer holidays it is pleasing to report that anti-social behaviour in the foreshore area was less than last year thanks to the work by our local police and it deploying dispersal orders, plus the efforts of the Harbour Authority staff. Although, on a few occasions, there were significant problems that disturbed the public and had safety implications.

For the first time since the public toilets opened, they have suffered some damage and the Council's staff rectified this as quickly as possible.

The Parish Council has received a response to its Freedom of Information request from EBC regarding its halting the provision of a Public Spaces Protection Order (PSPO) at the beginning of this summer season. It is pleasing to report that the Chair of the Local Area Committee has said that the LAC wishes to look at how best to manage

dangerous swimming and anti-social behaviour at the Quay, including a PSPO for next year.

As mentioned in the last Council News Natural England has published its proposed route of the England Coast Path through our area and has sought representations or objections to its proposal. The Parish Council has supported the route but said that it was essential that an alternative route up to the A27 road bridge is provided for when the Hamble-Warsash Ferry is not operating. The alternative route could use the 'Strawberry Trial' on the west and the existing riverside walk on the east side of the river.

The Farmers Market was fortunate with very pleasant weather again that brought large numbers of people to the village and there were queues all day for the ferry to visit it.

The Mercury Library and Community Hub continues to become more popular with an increasing number of users and in particular the Barclays Bank digital skills sessions are in high demand.

Agendas, minutes and reports for all Council meetings can be found on our website: www.hambleparishcouncil.gov.uk

MESSAGE FROM THE CLERK

Despite my best endeavours to plan early for Christmas and to start my shopping in October I never get around to it. My allotment, that should be clean and tidy and ready for winter invariably looks ravaged and in need of some stern treatment and the boiler when I go to turn it on refuses to cooperate. Despite all of this personal chaos things in the parish are a lot more orderly and preparations are well in hand for the coming months.

Spring Planting

The groundstaff will be out planting more

bulbs again this year complimenting some areas already planted, as well as finding new areas to concentrate on. You will also see work start on the verge alongside Hamble Lane opposite Ensign Way and up to Spitfire Way to plant a ribbon of poppies to mark the 75th anniversary of Victory in Europe Day.

Higher up Spitfire Way adjoining Woodpecker Walk we are also looking to plant a wild flower meadow. Although we will be buying seed we would like to encourage people to donate seed from their gardens



YOUR LOCAL ACCOUNTANTS - HOW CAN WE CAN HELP?

Our Hamble-based team offer a friendly and professional service to local businesses.

Our clients include trades, professional consultants and the marine industry.

WE CAN HELP YOU COMPLY WITH YOUR OBLIGATIONS

• VAT • Tax • Accounts

AND HELP YOU BUILD YOUR BUSINESS

• Management Accounts • Budgets • Growth Planning

FREE INITIAL CONSULTATION

023 8045 3907 enquiries@accountably.co.uk www.accountably.co.uk

1st Floor, Unit 12, Compass Point, Ensign Way, Hamble, Southampton SO31 4RA



Hamble £559,950



Hamble £595,000



Hamble £649,950



Hamble £387,500



Hamble £995,000



Hamble £760,000



Hamble £795,950



HAMBLE
ESTATE AGENCY
CENTRAL VILLAGE
PROPERTIES FOR SALE



Hamble £659,999

www.hambleestateagency.com Tel: 02380 455055 post@hambleestateagency.com

for use here. If you have any spare wild flower seed please pop it in an envelope, mark what type of seed it is and post it to the Parish Office. If you can keep different seeds separate it would be helpful. Not only will the area look much prettier next year, it should also help to support more insects and other wildlife.

New Village Signage

On the subject of keeping things clean and tidy you should be able to see the new signage produced last year by the children at Hamble Primary School. The signs are located in trouble spots and are designed to help improve the environment through some key messages such as: Do you really need to keep your car engine idling while you wait to pick your children up from school? Can you do more to recycle the waste you produce as a household? Could you be reusing plastic containers in creative ways to avoid it going to landfill? Hopefully a children's take on the world will be a more powerful prompt to help us think again about the places we live in.

Recycle Your Crisp Packets

I am delighted to say that the primary school and the parish council will be supporting Hound Parish Council to recycle crisp packets under the TerraCycle scheme. For those of you that haven't heard of it TerraCycle is an organisation that aims to recycle the "non-recyclable". It works at a community level to get organisations or individuals involved by encouraging people to take household products to a collection point where they will be collected and taken to specialist recycling facilities. Hound will be looking to collect 8kg of crisp packets so please keep yours and either take them to Hound Parish Office, to Hamble Primary School or drop them off at the Parish Office. We hope to look at other opportunities such as beach plastic recycling as they arise.

Foreshore Benches

As part of the face lift down at the Foreshore the traditional wooden benches will be renovated over the next few months; a coat of paint and replacement wooden slats. Existing dedications will be re-fixed as part of the project but if anyone has any concerns get in touch. This will complement the larger project to replace the concrete benches on the southern quay which will run in tandem over the next few months.

The Mercury Library and Community Hub

Over the summer holidays, The Mercury has become a regular haunt for more people popping in to either use the IT, borrow a book or simply spend some time in the company of others having a cup of tea or coffee. In particular, we have seen lots more children coming in to read and borrow books. If you haven't already brought your child in they will be able to join our book scheme, receiving a sticker each time they return a book.

Responding to feedback, the volunteers have arranged to pilot opening on Wednesday afternoons from 3-5pm. They hope to catch those that cannot make the morning openings. This will run until 2nd October. All the other normal surgeries and activities remain unchanged with details towards the back of the magazine.

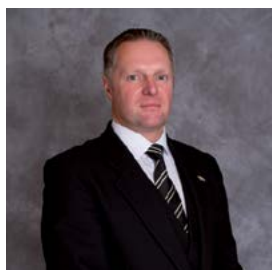
Lastly, I would like to thank the volunteers at The Mercury. It's been nearly a year since they started signing up for training ahead of the opening and many have spent considerable hours there making sure that we tailor the offer to residents needs. If you want to express your own appreciation pop along to The Mercury – the biggest reward for them is to see people happy and enjoying this lovely new facility.

- Amanda



FUNERALS

are important to **SAY FAREWELL**
and help us to create one
LASTING MEMORY



Jonathan Terry
Dip. FD - MBIE - MBIFD

We are here to help and offer our:

- Classic Rolls Royce Fleet
- Mercedes Fleet
- Monumental Masonry
- Coffee Mornings
- Bereavement Support Groups
- Golden Charter Funeral Plans



Jonathan Terry

Your Local Independent Funeral Director
and Memorial Consultant

Please contact us at any time for help and advice at our offices:

101 Peartree Avenue, Bitterne,
Southampton SO19 7JJ

3 College Place, London Road,
Southampton SO15 2FB

email: info@jonathanterry.co.uk

www.jonathanterry.co.uk

023 8043 4444

023 8023 4533



Personal and Caring Funeral Services

YOUR NEW PARISH COUNCILLOR



Cllr Sharon Hayward

Hi, I'm Sharon. I have lived in Hamble for nearly 10 years and run my own marketing consultancy from here too.

I love the village and community feeling, and how it

takes 20 minutes to buy something from the Co-op because of how many people you stop to talk to!

Like many people in Hamble, I enjoy sailing, am a member of the Royal Southern Yacht Club and can often be spotted jogging around the rail trail and foreshore.

Also, I share many people's frustration at the continuous building development on Hamble Lane and the knock-on impact this has on traffic and access to services in our

local area, such as the Doctor. I believe Hamble should continue to explore the benefits of a Neighbourhood Plan, rather than waiting to see what decisions Eastleigh Borough Council make on our behalf.

A large number of people in the village probably have no idea what Hamble Parish Council does, no insight into the reasoning behind decisions nor understand how they can interact with the council and influence decisions.

I would like to make the work of Hamble Parish Council more visible, through social media, the parish magazine and any other appropriate means so that the whole community can understand and appreciate what the Council does and see how every voice in the village has a chance to be heard.

sharon.hayward@hambleparishcouncil.gov.uk

HOUND BASICS FOOD BANK: DONATIONS NEEDED

This year, Hound Basics Food Bank has seen a 40% increase in demand. As a consequence, the food reserves have been greatly depleted and Hound Basics have had to purchase increasing amounts of food.

If you can help by buying some extra items with your usual shop, please drop them to the Parish Office - weekdays 10am-midday or 2-4pm - and we will get them to Hound Basics.

The items most needed are listed opposite. Referrals agents for Hound Basics Food Bank include school and community health visitors, community police, community centres and churches.

The items most needed include:

- **tinned cold meat**
- **tinned spaghetti**
- **tinned fruit**
- **tinned potatoes**
- **instant mash**
- **vegetarian tinned meals**
- **cook-in sauces**
- **rice**
- **jam and peanut butter**
- **porridge**
- **rice pudding**
- **coffee**
- **sugar**
- **snack bars**
- **biscuits**
- **toilet rolls**



**Gecko
Projects Ltd**

Property & Garden Services

**Bespoke garden rooms
Resin Bound Drives & Patios
Extensions & Alterations**

07502297779

02380199625

build@geckoprojects.co.uk



Find us on

Checkatrade.com



Residential | Respite | Dementia | Day Care

FREE Trial Day Care

Award winning care provided 24 hours a day

A welcoming and friendly atmosphere

Dedicated and expertly trained staff

Activities and events coordinator

Conservatory and quiet areas for relaxing

Well maintained garden with patio seating

Homemade food and cakes

**The
Gables**
CARE HOME

13 St Marys Road
Netley Abbey SO31 5AT
02380 452324

www.gables-care.co.uk



Top 20 South East care home 3 years running

CAN YOU HELP WITH THE POPPY APPEAL?

I am writing on behalf of the local Royal British Legion Poppy Appeal for help in our Hamble, Netley and Bursledon areas for this November.

Any help would be most appreciated. Perhaps you could do a street collection near you, deliver poppy tins to the shops and businesses in your area or help at Tesco where we man a collection in their Foyer, the ten days before November 1th.

If you are able and willing to give up a few hours for this very worthwhile cause, please contact me, Jane Welsh on 01489 784 962



or my mobile 07789 881 909. Any help you can give us will be greatly received. Thank you.

SLEEPING BEAUTY – THE PANTOMIME

As you are reading this, it will be the month of October and tickets are already on sale via Ticket Source/ Hamble Players. Also available direct from our Box Office on 02380 440660. Last year a vast number of tickets were sold on the first day, the majority by the end of the week! So, book early!

We have been rehearsing for a month now but it is never too late to come and lend a hand with set building, painting scenery, sewing costumes just to name a few little activities that keep us busy leading up to production week.

Contact Sheila Barker (Director of Sleeping Beauty) for further information on 02380 453718

Of course, once Christmas is over, we move on. It is said in the theatrical world that you're only as good as your last performance, so let rehearsals for a new show commence!

In 2020, we aim to stage a play, a Cabaret Evening, a Hamble Youth Production AND already decisions have been made about the pantomime. BUT let's keep you in suspense for a while longer!

Come and tread the boards with us, or get involved on the technical side. We also have a Social Secretary who organises Quizzes, Treasure Hunts, Nights out etc.

Check out our web site for contact details. All welcome! www.hambleplayers.org.uk

WESSEX CANCER TRUST SUPPORT


Have you been affected by a cancer diagnosis? Would you like to find out more about support in the area?

Wessex Cancer Trust invites you to drop in for a cuppa and a chat at The Mercury Library and Community Hub, between 12-2pm on Tuesday 24th September or 22nd

October.

You can pick up leaflets and find out about accessing free counselling and complimentary therapies at our Chandlers Ford Support Centre.

www.wessexcancer.org.uk



• OSTEOPATHY •
• THERAPEUTIC MASSAGE •
• SPORTS MASSAGE •

Assessments & Treatments Available For :
Back pain/sclatica • Neck pain/whiplash
Joint & muscle pain
Headaches • Sports injuries

For appointments call Sally on 07803 726173
sally@hambleosteopath.co.uk
www.hambleosteopath.co.uk

LJM BOOKKEEPING SERVICES

- Self Employed/Small Businesses
- Bookkeeping to Trial Balance
- Computerised Accountancy
 - Credit Control
 - VAT Returns
- Preparation of Final Accounts for Sole Traders
- Self-Assessment Tax Returns
 - Payroll

Holiday Cover can also be provided for

Hourly Rate Charged

Contact Lynda on 07774 790543
or Email:
ljmbookkeepingservices@gmail.com

P & L DECORATING

HAMBLE - ESTABLISHED FOR 20 YEARS

- Interior
- Free Estimates
- Fully Insured
- No job too small



Tel: 023 8045 3196
Mob: 07517 976 198
Email: philbolwell@gmail.com

BOTOX • FILLER • FACIAL PEELS
CRYOPEN
(FREEZING SKIN TAGS/WARTS/SUN SPOTS)



AESTHETIC TREATMENTS BY A
GP SPECIALISED IN DERMATOLOGY

Book a Complimentary Consultation to
find out more

The Salon, 2 The Square, Hamble
02380 458458
www.facebook.com/SkinDrClinic
skindrclinic@gmail.com

BERYL ROGERSON MEMORIAL LUNCH

The next luncheon is November 7th at 12.30 pm at the Memorial Hall

All parishioners who are over 70 (and their spouses or carers) are welcome to this happy and friendly event. A two-course hot meal served with wine/fruit juice, coffee/tea and mints. Raffle and entertainment.

Transport available for those who need it. The Hall is fully accessible.

CLOSING DATE FOR APPLICATIONS, FRIDAY October 25TH

This popular event, held twice a year, is now in its 12th year and is always attended by 60 - 70 people. Although the original fund is now exhausted, we have been fortunate to have the support of local businesses and council to keep us going. Please come along and join us and encourage friends or neighbours to come too. It is especially good to welcome newcomers to the parish, also those who live alone and who enjoy an opportunity to meet up with others.

Kathleen Hand Hamble Village Memorial Hall



Application Form

THE BERYL ROGERSON MEMORIAL LUNCHEON November 7th 2019

Name(s).....

Address.....

Telephone.....

I enclose £ (£6 per person). Please pay with **cash**, we pay bank charges on cheques

Do you require transport? (please tick) Yes ☐ No ☐

Special dietary requirements?

Please send this form, with your money to the Parish Office or Coronation Parade Post Office
Closing date October 25th

Please write your name and address on the outside of your envelope.
Arrive between 12 and 12.30pm.

"The best views of the river Hamble"



Offering superb views over Mercury Marina basin, the river Hamble and Badnam Creek. The Gaff Rigger Restaurant, Bar & Terrace is a stunning location whatever the weather, with a food and drinks menu to match.

Open all day for breakfast, lunch and dinner, as well as elevenses nibbles and afternoon teas, the atmosphere is upbeat and casual with an excellent 'can do' service.

Our relaxed and stylish, tastefully renovated restaurant-bar both overlook the river, and our stunning terrace offers perfect al fresco dining.

Where ever you choose to sit, and whether with friends, family or alone, you'll be able to sit back, relax and watch the marine-world go by.

We're open at 9am every day, Wifi access, ample free parking.
Traditional Sunday lunch served every Sunday from Noon.
Booking is always recommended.

For enquires and reservations:-

023 8045 5595

www.gaffrigger.co.uk

Mercury Yacht Harbour, Satchel Lane, Hamble, SO31 4HQ

HAMBLE CONSERVATION VOLUNTEERS



One of the tasks of the summer months was to renovate the circular oak bench on Hamble's foreshore. It is a very popular feature, well used all year round, and it is not surprising that it endures a fair degree of wear and tear from the elements and usage. This year it required replacement of some of the planking and one of our members skilfully made identical copies of the failing ones. Thereafter it was a case of sanding it down and revarnishing.

We expect the autumn to be a very busy period for us with a major campaign to remove scrub from Hamble Common and a task to renovate the footpath that runs parallel with the boundary of the Common with Hamble Point Marina. We understand this section of path is likely to become part

of the English Coast National Path. The Common's Site of Scientific Interest status places significant restrictions on the use of mechanised plant so volunteer turnout is crucial for success.

Regardless of the task we welcome volunteers, the tasks can be arduous but there are roles for a wide range of abilities. Furthermore we appreciate that many people cannot spare the time for the whole task so please do not be put off if you can only be with us for a short time.

BEACH CLEANS

2nd & 16th October 2019.

The next conservation task
MAIN TASK
9th October

For the main task, meet 10am Hamble Point Car Park and please wear clothing suitable for the weather on the day. We provide all equipment but welcome contributions to the tea fund. To book your place for this event please contact Philip:

07810 453 138 / hambleconserve@btinternet.com.

www.hambleconservationvolunteers.org.uk

HAMBLE VILLAGE PLAYSCHOOL

We are finalising our register for the 2019-2020 school year, and have places available starting now. So, if you are looking for established childcare in a safe, secure and stimulating environment, Hamble Village Playschool is the ideal setting.

Contact our pre-school manager, Julie Ash on 07903 388568 to arrange a visit and to discuss availability of sessions.

Hamble Village Playschool was started by a group of parents in the year 2000, as a registered charity, governed by a parent-led committee with a full-time manager.

We are a community run pre-school for children from Hamble and the surrounding area. At present we have around 50 children attending and we offer half-day and full-day sessions for children aged between 2 years 9 months and 5 years. We have close links with Hamble Primary School although our children may also go on to attend other schools in the area.

Hamble Village Playschool endeavours to provide the best possible learning environment for pre-school children which we achieve by teaching and learning through play. The enthusiastic and dedicated staff make sure the atmosphere is a happy one, where children feel supported, valued and safe. Pre-school operates from the back hall of the Memorial Hall in the heart of the village and has a secure outside play area to the rear.

At Hamble Village Playschool, the aim is to provide a secure, fun, varied and stimulating learning environment. We provide children the opportunity to learn and explore using a wide range of activities and equipment, covering all areas of the Early Years curriculum and lay the best possible foundations for their future. The pre-school is registered with OFSTED and we are proud of our "good" rating, which was reconfirmed in the latest OFSTED



inspection at the start of 2018.

In addition to the spacious and well-equipped indoor space, the pre-school has a colourful open-air playground, an outside undercover play area and a wooden pirate ship for the children to play on. The staff monitor the children carefully, but where possible allow the children to move freely between the indoor and outdoor areas, choosing their own activities. Each year, we hold a number of fundraising events, such as a summer fete, an Easter egg hunt and a children's cinema night. We also take the children on walks around the village along with periodic visits to other local community organisations such as St Andrew's Church, Mercury Hub Library and the Fire Station.

In 2020, we are looking forward to our 20 year anniversary celebrations including a fantastic fun day planned for 20 June 2020.

Julie Ash is the pre-school manager and if you are interested in your child attending the pre-school please contact her at the Memorial Hall or email julie@hamblevillageplayschool.org.uk. She is very willing to talk to you and provide any further information. If you would like to contribute personally or through your business to the pre-school's fundraising activities, please contact Julie and she will pass your details to the committee. To find out more about Hamble Village Playschool you can find us on Facebook or look at our website: www.hamblevillageplayschool.org.uk

Royal Victoria Country Park



ROOM ON A BROOM STORY TRAIL AND CRAFT

Tuesday 29th or Wednesday 30th October, 11am to 1pm or 2 to 4pm.

Join us for the retelling of this popular story during a stroll around the Park. Followed by an indoor craft session. Suitable for 6 yrs and under. 11am - 1pm. All children must be accompanied by an adult. £6/child. Spaces are limited so booking in advance is essential (details below)

£6 per child



SPOOKY TALES AROUND THE FIRE

Thursday 31st October, 6pm to 8pm.

a spooky night of stories around the bonfire with toasted marshmallows and hot chocolate. A great evening for all the family (4yrs and over). Don't forget to dress warmly and bring a torch. Spaces are limited so please book in advance to avoid disappointment. £4pp. All children must be accompanied by an adult.

£4 per person

To book either event, visit the Park shop or call 023 8045 5157 (10am - 4pm).

Normal parking charges apply at the Royal Victoria Country Park.

Itchen Valley Country Park



SPOOKY HALLOWEEN TRAIL

26th October to 3rd November, between 10am and 3pm.

Do you dare to follow our spooky Halloween trail into the woods? Gather clues and get the answers right to win a treat!

Why not get dressed up to make the most of your Halloween costumes?

Pick up your trail guide from the Information Desk.

£2.50 per trail guide



INTO THE DARK ON HALLOWEEN NIGHT

Thursday 31st October, 4.30pm - 7.30pm (call to book a time slot)

Make Halloween a night to remember! Give the sugar overload of trick or treating a miss and enjoy a real Halloween adventure in the woods at IVCP.

Experience the Spooky Halloween Trail after dark in the woods. Gather round the fire, tell scary stories and toast marshmallows.

Treat yourself to Halloween themed meals in the Woodland café.

Book a time slot by calling 023 8068 3790. Free parking after 4pm.

£6 per trail pack (includes a torch, hot chocolate and prize).

G. Grogan Plumbing & Heating Ltd

**Gas Servicing & Central Heating
Boilers – Installation & Servicing
Solar – Installation & Servicing**

DOMESTIC & COMMERCIAL

**T: 01489 691999
M: 07887 757979
E: the.plumber@ntlworld.com**



Chambers of Hamble TRADITIONAL FAMILY BUTCHERS



**BEEF, PORK, LAMB, CHICKEN,
TURKEY, GAME**

- Top quality
- Free range
- Sourced locally where possible
- Seasonal produce
- Many traditional sausage recipes



6 Coronation Parade, Hamble Lane
Hamble, Southampton SO31 4JT
info@chambersofhamblebutchers.co.uk

023 8045 4260

Opening Hours:
Tues-Fri 8am-5pm, Sat 8am-3pm

Jiggy Wrigglers is an award winning, fun and affordable musical activity group for babies, toddlers and preschoolers. Mixed Age (0-5 yrs) and Baby groups available at Hamble Village Memorial Hall on Mondays.

Pay as you go, no booking required.

For more details contact Tonia on: 07833 292879
or visit our FB page:
jiggywrigglers.com/jwl-southampton-east



VIKING CARS

023 8040 6633

Based at Hamble Point Marina
Reliable friendly private hire/taxi
Service – FOR SHORT OR
LONG Distances and ALL AIRPORTS
AND PORTS. 4, 6, 7 & 8 Seaters
Prices from:
Southampton airport £22.00
Heathrow £80.00 Gatwick £95.00
Bournemouth £58.00

023 8040 6633

www.vikingcars.co.uk

**20%
DISCOUNT FOR
TAKE-AWAY ORDERS**



Contemporary Indian Cuisine

4-7 High Street, Hamble, Southampton SO31 4JE

Tel: 023 8045 2285

Tel: 023 8045 4477

Opening Hours:

7 days a week - 5:30 to midnight

All major credit cards welcome

Free Car Parking

www.cinnamonbayhamble.co.uk
reservations@cinnamonbayhamble.co.uk

VISIT OUR FACEBOOK PAGE

S. LINTON DECORATING

Over 20 years experience
No obligation quotes and advice given
Good knowledge of the best methods and materials
Work carried out in a clean a tidy manner
Reliability assured
Fully insured

**02380 230 588
stuartlinton75@gmail.com**



**F.C. HUGHES
FUNERAL DIRECTORS**



**46 St. Johns Road, Hedge End S030 4AG
Tel: 01489 782404**

- Our staff are at your service 24 hours a day
- Memorial advice and products available
- Funeral Plans Available
- Members of The National Association of Funeral Directors

www.dignityfunerals.co.uk **Part of Dignity plc.
A British Company**

**Effective treatment
that triggers immune function to
accelerate recovery**

**For Aches, Pains,
Injury; Bone,
Muscle,
Tendon damage;
Stress,
Tension &
Depression**

**Call Tasha in the heart of
Hamble on 07926 876 739
www.alternativepainrelief.co.uk**



**Tasha Ault
ALTERNATIVE
PAIN RELIEF**

...enjoy life free from pain
CALL: 023 8000 7246



The Gregg Schools

Independent day schools for boys
and girls aged 3-16 years old

www.thegreggprep.org

www.thegreggschool.org

**DAILY MINIBUS SERVICE
FROM HAMBLE VILLAGE**

**The Gregg Preparatory
School**
17-19 Winn Road
Southampton
SO17 1EJ
Tel 02380 557352
office@thegreggprep.org

The Gregg School
Townhill Park House
Cutbush Lane
Southampton
SO18 3RR
Tel 02380 472133
office@thegreggschool.org



BenCurtis carpentry

023 8178 9869

07967 807948

info@bencurtis.co.uk

- Kitchens • Bathrooms
- Doors • Flooring

NO JOB TOO SMALL



Expert Builders and Window Installers
Exceeding Your Expectations always



Expert building and windows, all you need under one roof
With a **100% customer satisfaction** rating last year for windows, doors and conservatories

This **reliable local family** run firm has 20 years experience in the building trade and offering a high quality finish. Services include:

Extensions and New Build
Windows, doors and conservatories (with 10 years guarantee)
Decoration and Maintenance

No job is too small, please contact us for a friendly, honest, value-for-money quote and advice

01329 237715

www.kjnhomeimprovements.co.uk



R&M

Proud members of
Checkatrade.com
Where reputation matters

PROPERTY MAINTENANCE LTD

All External and Internal work undertaken

Specialising in:

- All aspects of Roofing
- Pitched/Flat roofs
- Slate, Tile & Lead work
- UPVC Facias and Guttering
- Roof Windows
- Brick work including Chimneys & Re Pointing
- Patios & Decking
- Laminate & Hardwood Flooring

- Fully Insured
- Trading Standards Approved
- Member Of Checkatrade
- Free Quotations
- Friendly & Reliable

With over 25 years of experience within the Construction Industry

Contact Ray on: **07757 808 290**
Or Email: randmpropmain@talktalk.net

HAMBLE-LE-RICE FLOWER CLUB



Best In Show

A big thank you to everyone in the Flower Club, the committee for their hard work, the members for the brilliant arrangements and lastly to all the people of Hamble and surrounding district who supported us. An enjoyable afternoon had by all.

Special thanks to Maureen Lawes, a NAFAS judge for her time and wonderful comments. Also, to Heather Veal for not only providing a wonderful arrangement in the foyer but also presenting the awards.

September has been busy! The day after the show at our monthly meeting Pip Bensley entertained us with anecdotes about Chelsea. We had the privilege of actually seeing one of her Gold medals, won for the Hillier Gardens exhibit in which she was involved for over twenty years. We learnt how the judges are allocated and the strict rules they must abide by. Plus, interesting photos of gardens and celebrities. How



Pat Maple Award for the People's Choice

we would all love to be there when royalty visits even just to avoid the crowds! A very enlightening afternoon.

On Monday October 14th we welcome Diane Norman for a demonstration entitled 'Ikebana'. This should be a fascinating afternoon. Members £3 and non-members £5. If you have been inspired by coming to our Show, do come to a demonstration to see how it's all done! Doors open at 1pm for a 1.30pm start.

Don't forget our Classes are still continuing through the Autumn and Winter usually on the third Monday afternoon of the month in the Roy Underdown Pavilion. Just contact Christine for further details.

Sheila, Chairman - 02380 453718
Christine, Vice Chairman - 07764 219193
Jeanette, Hon Secretary - 07813 326997
Judy, Hon Treasurer - 02392 554157



Solent Boat Clean

Friendly, professional, reliable service
across the Solent.



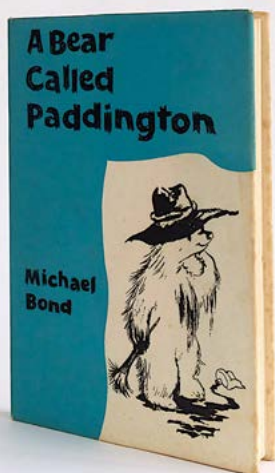
Cleaning & GRP
Polishing from
£5 per ft

- Boat Cleaning
- GRP Polishing
- Anti Fouling
- Teak Deck Renovation

t: 023 8045 8591 m: 07492 110 321

www.solentboatclean.co.uk

A THOUGHTFUL GIFT.
MADE EASY.



SIGNED, CLASSIC AND RARE &
COLLECTIBLE CHILDREN'S BOOKS
www.thegiftbookcompany.com

MOORE ELECTRICAL SERVICES

David Moore - Approved Electrician

- Rewires
- Showers
- Extra Sockets & Lights
- Outside Sockets & Lighting
- Power to Garages, Sheds and Conservatories
- Energy Efficient Electric Heating
- Testing & Fault Finding
- Fuse Boards
- Security Lighting
- Fire & Security Alarms
- Extra TV Points
- Ethernet Data Wiring
- Extra Satellite Points

Tel: 01489 786419

Mobile: 07971 405014

Email: info@mooreelectricalservices.co.uk

29 Reservoir Lane Hedge End



Proud members of
Checkatrade.com
Where reputation matters



HAMBLE LADIES GROUP

Time for me to give you an update of what Hamble Ladies have been up to over the past 3 months. Hopefully everyone has enjoyed the summer months and made the most of the lovely weather we had.

In June we had our social evening held in the Priory Centre. We served our ladies with strawberries and cream accompanied by wine and soft drinks. Lots of chatting went on and it was very enjoyable. We played a few 'silly games' which was fun - we are all young at heart after all.

Debbie Phillips from SeaSky Studio came along and showed us how to do some origami which was very interesting and with her skill of teaching many of us achieved something nice to take home. A very relaxed and happy evening.

In July we set off in a very large coach and headed for Highclere Castle. The sun was shining for us which helped us all have a very good day. We were able to tour around the house in our own time so on arrival some of us did that first then went for coffee and others did it around the other way. For those followers of the show Downton Abbey, it was lovely to see the beautiful rooms that the show is filmed in with all the wonderful furniture and settings.

As it was such a warm sunny day a walk around the grounds was possible and well worth it. This was a real treat as they are beautiful with views for miles of all the surrounding countryside. Many of our members treated themselves to souvenirs from the gift shop and cream teas from the restaurant.

The day was extremely enjoyable and I would like to thank Joan for organising it so well. We didn't lose any of the ladies and all were present and correct when we came home.

In August we were joined by Alison (AJ) Waines, a local resident of Hamble, who is an author of psychological thrillers.

Alison gave us a brief outline of her career before she became an author.

She grew up in Birmingham and from petrol pump attendant to professional cellist

playing at Albert Hall to volunteering at the Samaritans when she moved to London. Following this experience, she decided to train as a councillor and psychotherapist and qualified in 1995. She did this for 15 years working in safe houses with female ex-convicts at the serious end of crime (murderers) with a lot of mental health issues.

She explained that she discovered a lot of things about women and crime. The passive ways of killing - fire bombs and poison for example and a lot were used as self-defence for them and their families. She said she had used all this experience for her books but without any names mentioned and her books reflect that it is about why and how and not what and who.

Alison moved to Southampton and carried on working as a psychotherapist but she decided to change direction. She wrote some self-help books in London but hadn't written any fiction. She told us how much she loved reading and started thinking of writing a novel but wasn't too sure about it.

She started writing and was taken on by a top agent in London in 2010 but nothing came of it and she was dropped but this did not deter her and she carried on writing and wrote two more books and approached another agent. Success began and in 2013 her first book 'The Evil Beneath' was published in Germany and France. Her career went from strength to strength and her books were put on 'E Book' by Amazon.

One of her books was titled 'Girl on a Train' which had great success and the sale of this book shot up as there was slight confusion with another book called 'The Girl on the Train' both psychological thrillers. This brought a lot of publicity which was all good for the sale of her books.

Alison has written lots of books and says she writes one a year and all her books end with a 'twist'. She read an extract from her latest book 'Enemy at the Window' which had us sitting on the edge of our seats wanting to hear more. She says she likes to be at home where she does her writing listening to music and absolutely loves

"Attention Club Members"

HAMBLE CLUB

BEAULIEU ROAD, HAMBLE
Telephone: 8045 2213



THE FAMILY CLUB
Membership Available

- LIVE MUSIC
- BINGO - Wednesdays, Sundays
- Small/Large Function Room Available
- Catering can be arranged
- showing all your favourite games on Sky Sports
- Free WiFi

BADGER CLEANING SERVICES

Carpet & Upholstery Cleaning

A Hamble based Company
specialising in cleaning
carpets and upholstery



Please phone for a quote.
023 8178 7229 / 07780 652933



SOLENT GARDEN SERVICES LTD

ESTABLISHED 1973

www.solentgardenservices.co.uk

Based in Hamble since 1973

Tel : 07787594682
Email : robwoodh01@msn.com

- Garden Maintenance
- Regular Mowing
- One Off Mowing
- Tree Surgery
- Hedge Cutting
- Fencing
- Landscaping
- Design Service

Proud members of
Checkatrade.com
Where reputation matters




ROYAL SOUTHERN YACHT CLUB CHRISTMAS FAYRE 2019

SATURDAY 2nd NOVEMBER
10am to 3pm

OFFICIAL OPENING
10.00am

- 32 Stalls with quality gifts
- Bar Lunches available
- Cafe
- Spectacular river views
- Dedicated parking
- Wheel of Fortune
- Supporting local charities



Entrance £3



Royal Southern Yacht Club
Rope Walk
Hamble
Hampshire SO31 4HB

ADVERTISE IN

Hamble-le-Rice

VILLAGE MAGAZINE

vmag@hamblepc.org.uk

BERYL'S TEA SHUFFLE

Come and join us for music and a chat!

Thursday 10th October, 1-3pm at Hamble Memorial Hall.

£2.50 entry including a cuppa and biscuits.

Call 07944 574 344 for more.

what she does. Another very interesting and successful evening and we were able to purchase some of her novels that she had brought along with her.

October 8th: we have Joey Wilds on Table Styling

November 12th: we have Hamble Ukelele Players

December 10th: we will be having our

Christmas Dinner - yes, it is not far away and we like to be organised.

All our meetings start at 7.30pm in the Priory Centre, Hamble. New members are always welcome. We have had a few new faces come along over the last couple of months to join us and from the feedback from them is that they have enjoyed the evenings. Any queries please ring me on 02380 453626 - Bobby Conduit

HAMBLE LOCAL HISTORY SOCIETY

Craig Lambert, Professor of Maritime History at Southampton University, who had previously given a very popular talk to the Society about Henry V's ships based in the Southampton area, gave another talk on his latest research about Tudor shipping in our area during Queen Elizabeth I's reign. In particular he talked about 'Shipping, Seafarers and Trade: Southampton and its Associated Ports from 1565 to 1580' and focussed on the shipping and trade on Southampton Water, including Hamble.

He started by explaining the sources he used in his research such as custom records, government surveys and naval records that listed the crown's wartime requisitioning of merchant vessels. Elizabeth I used the new rising merchant men who were willing to be pirates/privateers as a cheap means of waging a war.

From 1565 to 1580 it is recorded that 277 Hampshire vessels made voyages overseas and 594 were coastal trips. Most overseas voyages were to the low countries and Spain but on occasions the ships were taking cannons and arms to Italy. During this 15-year period most coastal voyages were to Sussex, Dorset (Poole) and the Channel Islands. The ships were reasonably small with the average size of 30-tons and carried goods as diverse as tin from Cornwall and firewood from the New Forest.

Craig showed a copy of the original document of the 'John of Hamble' (10 tons) commanded by Edmund Clarke, heading from London to Portsmouth in 1565 mostly carrying haberdashery wears and other goods. Another document he showed was the 12 ton 'William of Hamble'

commanded by William Dalaple, sailing from Southampton to Rye with salt in April 1575.

In a 2-year period in the early 1570s 2 ships at Hamble (average 11-tons) and 5 ships at Bursledon (average 17-tons) are listed but it is known far more were not recorded. One of these ships the 25 ton 'James' of Bursledon commanded by John Euystaces (Eustace) was carrying wheat from Chichester to Rye in 1573. Edmund Clarke was master of the 12-ton 'George of Bursledon' taking a cargo of 3,000 Newfoundland fish from Weymouth to Southampton.

One survey provided good information about local vessels and interestingly the biggest ship in Southampton was not recorded as carrying merchant goods but other records indicate it was built as a privateer to take prizes. This survey also included small boats such as fishing boats, lighters and oyster dredgers that are not recorded in other documents. Craig gave an example of how long a career was at sea. Ship master, John Holford, spent 35 years at sea commanding 5 different vessels.

Elizabeth I commissioned a survey of ships in the country as she was concerned about piracy. She asked that it found out who was a pirate, what the shipping was doing and how many ships and houses there were in each port. In Hampshire there were 174 boats and 166 ship owners. Southampton had 323 occupied houses with another 52 uninhabited. In 1565 Hamble had 26 households, 22 boats owned by 24 men. Most of its boats were between 1 and 2 tons with the largest 12 tons. Warsash had 5 boats and 5 ship owners and it was

ROOFCARE

STORM DAMAGE! URGENT!

IMMEDIATE ATTENTION / INSURANCE CLAIMS PROCESSED

- Maintenance/Guttering Repairs/UPVC renewal/Facia etc
- Tiling and Slating Repairs / Roof Ridges Re-pointed
 - Exterior Painting • Flat Roofs Re-Felted
- Chimney Repairs / Re-Pointing / Leadwork Renewal
 - Garden Rubbish Clearance

**NO JOB TOO SMALL: 10% OAP DISCOUNT
FOR FREE ESTIMATES, SOUND ADVICE AND CHEAPEST QUOTES:**

Please ring Les: 02381 781 364 / 07931 408 769

PLEASE KEEP FOR FUTURE REFERENCE



Access Care

"My mother's Live-in Carer is a real godsend for us all"

One-to-one, personalised support delivered by carefully matched Carers providing companionship, home-cooked meals, laundry and housekeeping.

We are your local Hampshire Live-in care agency, private and family-run since 1994, helping you arrange care.

Call our friendly Live-in care specialist to find out more:

0800 980 3958

WWW.ACCESS-CARE.CO.UK

clear that there were links between Hamble and Warsash such as Thomas Sexes who appears in both lists.

Craig concluded that through his research he had found out that Southampton Water ports formed an important link in the south coast trade networks. It was experienced in foreign trade, but specialised in Cross-Channel runs for wine and salt. There was a healthy merchant fleet due to the need to undertake frequent voyages to the south-west and London, as well as short runs to Dorset and Sussex. They were a versatile bunch of shippers that managed complex

trade networks and provided vital service in ports and in feeding urban populations. Craig's talk was very well received with great interest. His new comprehensive research information will add much to our knowledge of shipping, trade and the seafarers in our locality including Hamble and its river. For more information about Craig's research project please see his website www.medievalandtudorships.org that includes a database of over 53,000 ship voyages from over 500 English ports during 1400-1585.

FROM THE COUNCIL'S RECORDS

100 YEARS AGO - Buses ... raised the question of the Buses not always being reliable for meeting certain trains. It was decided to send a letter to Messrs A.V. Roe & Co, to ask if they would arrange for their bus to leave to catch the 8.26am train from Netley, and to await the arrival of the 5.13pm train at Netley.

OCTOBER 1919

Netley was Hamble's closest station as Hamble Halt was not built until the Second World War

75 YEARS AGO - Spilcroft Allotments ... a discussion on the Notice to give up the Spilcroft Allotments, in his opinion the Wartime regulations would not allow the Tenants to be disturbed until the end of the duration, and even if the Notice held good, the land could be requisitioned for Allotments contended the Notice was in order and the Tenants were aware of the conditions under which the land was offered by reason of each Tenant signing the Agreement which specified that it was let without security of Tenure.

OCTOBER 1944

(Does anyone know the location of Spilcroft allotments?)

75 YEARS AGO - Educational Arrangements ... the general question of organisation of schools under the Education Act, 1944. The County Educational Officer states there is no doubt the existing senior school at Hamble will become a secondary school under the new Act, although it may be that it would be necessary to make special arrangements for a few children at a grammar school ...

OCTOBER 1944

50 YEARS AGO - Inshore Rescue Service ... He also reported that the service is already operating and hope very shortly to be fully operational ...

OCTOBER 1969

50 YEARS AGO - Coronation Bend ... understood that C.C. officials had looked at Coronation Bend and talked with shop-keepers on Coronation Parade, who told the C.C. representatives that it was a daily occurrence for cars to park on the bend - whilst the drivers use the telephone kiosk - thus causing an obstruction. It was observed a Police car went by while a lorry was parked on the bend, but took no notice ...

OCTOBER 1969

25 YEARS AGO - Transfer of Licence ... a new Justice's Licence in respect of the Gaff Rigger, Mercury Marina ... The application for a new Justice's Licence excludes the current restrictions on use as a Club only and would permit public use ...

OCTOBER 1994

THE ABOVE IS AS RECORDED IN THE ARCHIVES (IMU)

DATES FOR YOUR DIARY IN OCTOBER

Tuesday 1st

Bursledon and District Gardening Club

"Autumn Fireworks" a talk by Peter Chivers. Competition: 3 Dahlia Stems.

£2 per meeting for visitors. 7pm, St. Paul's Church, Oak Road, Pilands Wood

Saturday 12th

Jubilee Sailing Trust Autumn Pumpkin Festival and Scarecrow Avenue



Local food & produce, crafts & gifts, live bands, giant pumpkins and much more.

£5/adult, children FREE

Midday-5pm, Royal Victoria County Park

Every Sunday

Netley Abbey Junior Parkrun



A free 2k event for juniors only (4-14 year olds). Just register before you visit: www.parkrun.org.uk.

9am, Royal Victoria Country Park

Monday 14th

Hamble-le-Rice Parish Council Meeting

All Council meetings are open to the public to attend.

7pm, Mercury Library and Community Hub

Monday 28th

Hamble Parish Planning Committee Meeting

Considering the Council's response to applications in or affecting Hamble.

7pm, Mercury Library and Community Hub

Thursday 31st

World's Biggest Coffee Morning for Macmillan at The Mercury Library and Community Hub



Join us for coffee, cake and a chat while raising money for Macmillan.

10am-midday, The Mercury

Listing of an event does not constitute endorsement. Details believed to be correct at the time of publication.

At The Mercury Library and Community Hub. Open Monday-Saturday, 10am-midday

Monthly

Citizens Advice Drop-in Sessions, 1st Wednesday, 10am-1pm

Next Sessions: Wednesdays 2nd October and 6th November

Barclays Tea and Teach, 2nd Wednesday (by appointment only)

Help with digital skills. Contact the Parish Office to register your interest. Next Session: Wednesdays 9th October and 13th November (must be pre-booked)

Wessex Cancer Trust Support Drop-in, 12-2pm Tuesday 22nd October

Drop in for a cuppa and a chat to find out about support available.

Weekly

Creative Writing, every Thursday 7.30-9pm in blocks of 8 weeks

An enjoyable and friendly class to develop your writing skills covering everything from creating characters through to journaling. £10 per person, drop-in, pay as you go. info@rebeccarogerson.co.uk 07496760935.

Regular Events

Weekly	What	Where
Monday	Monday Club	1.30pm, Hamble Club
Mondays	Hamble River Singers Community Choir (Contact basschickbev@gmail.com)	7.30pm, HRSC Rooms
Monday	U-Tone Circuit Training	8.15-9.15pm, Memorial Hall (Rear Hall)
Monday (except Bank Hols)	Forever Fit: 60+ fitness exercise to music. 4 week block £16. (Call Julie: 07952 983 349)	10.30 - 11.30am, Follands Sports & Social Club.
Tuesday	Parent & Toddlers Group	9.30-11.30am, Memorial Hall
Tues & Thurs	Pilates	(Tues 12-1pm) (Thurs 10-11am) Memorial Hall
Tuesday	Puppy Classes (contact Annette 023 8045 3490)	6-9pm, Memorial Hall
Wednesday	Yoga	10-11.30am, Memorial Hall
Wednesdays & Fridays	Fantasy Allstars Cheerleading Classes at Hamble Sports Complex	6-8pm Wed (12+), 5-6pm Fri (3-8years), 6-7pm Fri (9-11years)
Wednesday	Chairfit: 60+ Seated exercise to music. 4 week block £10. (Call Julie: 07952 983 349)	11.15am-12pm, Roy Underdown Pavilion.
Wednesday	Cherubs (Contact: Father Graham Whiting 023 8045 2148)	10.30am - 12pm, St. Andrews Church.
Wednesday	Acting Up For class times contact: 07519 754829	Memorial Hall
Thursday	Walking Netball	10-11am, Hamble Sports Complex
Friday	Village Market	Memorial Hall, 9.30-10.45am
Bi-Weekly	What	When
1st, 15th & 29th	St. Andrew's Cafe @ The Priory Centre	10.30am-12.45pm
Monthly	What	Where
2nd Monday	Hamble Flower Club	1.30pm, Memorial Hall
4th Monday	RAF Association Ichen & Hamble branch (Contact: Steve Rawlings 02380 740771)	12pm, Hamble Club
1st Tuesday	Bursledon and District Gardening Club	7pm, St Pauls Church, Bursledon
2nd Tuesday	Hamble Ladies Group	7.30pm, Priory Centre, St Andrew's Church
1st & 3rd Weds	Hamble Conservation Beach Cleans	10am, Hamble Point Car Park
2nd Wednesday	Hamble Conservation Task	10am, Hamble Point Car Park
4th Wednesday	Informal Bereavement Support Group (Contact: Heather Smith 02380 452988)	2pm-3pm, The Priory Centre
Last Saturday	Place 2B Café (Coffee, Cake & Conversation)	10am-12pm, Priory Centre

RIVER RAT

Under new management

In July, the River Rat changed hands and is now under new management. Local sisters, Laura and Sarah welcome you to a revitalised village venue



SUNDAY ROASTS

Now serving a homemade Sunday menu

Dogs welcome

Served 12pm - 3pm every Sunday **BOOKING ESSENTIAL** (Children's menu available)

CHRISTMAS PARTIES

❄️ Taking bookings now! ❄️

2 Courses £28.95 3 Courses £32.95

Available from 1st - 23rd December

(pre order and deposit required)

CHRISTMAS DAY

❄️ Taking bookings now! ❄️

❄️ 6 Courses £95 ❄️

Served 12pm - 2pm

(Children's menu available on request)

NEW YEAR'S EVE

Come and enjoy a pre New Year's Eve party dinner

Served 6pm - 9pm 4 Courses £75 **BOOKING ESSENTIAL**



Open Tuesday - Saturday 6pm - 11pm Sunday 12pm - 3pm

Also available for private events

BOOK NOW

info@riverrathamble.co.uk 02380 457 801



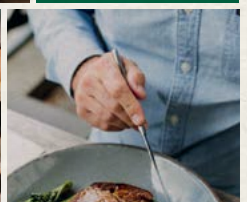
THE BUGLE
HISTORIC WATERSIDE PUB

*Traditional village
pub home to locally
sourced cuisine*

Our new Christmas
brochures are in! Book
your festive meal with us
starting from Friday 30th
November until Monday
24th December



*Book now
for
Christmas*



BOOK NOW 023 8045 3000

WWW.BUGLEHAMBLE.CO.UK

@idealcollectionpubs
TheBugleHamble
@TheBugleHamble

Move in from just £30*

Welcome to the future of
renting with Leaders *plus your first month's rent



**NO DEPOSIT?
NO PROBLEM!**

L | LEADERS

Find out more
by calling us on
01489 854 382

leaders.co.uk