

TRIO

HARBY, THORNEY & WIGSLEY NEWSLETTER



Winter Wonderland
Window Trail
&
Christmas Fayre

Saturday 11th December

Harby Village Hall 4-7PM

Refreshments / Raffle / Tree switch-on

Hosted by The Friends of Queen Eleanor

Issue No. 233

December 2021

Editor: Ann Williams - Owl Cottage, Wigsley Road, Harby, Newark NG23 7EF T: 703766 E: ann.owl@btinternet.com

LAST DATE FOR CONTRIBUTIONS TO NEXT ISSUE 12th JANUARY 2022

This Newsletter is organised and printed by the generosity of Ruddocks of Lincoln. 01522 529591

NEWS FROM ALL SAINTS' CHURCH, HARBY WITH SWINETHORPE – *Bridget Wells*

Looking back on 2021, it has been a year of change. After lockdown, the services are now back to the normal pattern. The church was beautifully decorated for Harvest and it was an enjoyable lunch after in the Village hall, with a pleasant surprise. A new volunteer offered to help clean the church. Thank you. When there used to be a weekly service, there was a large number of volunteers but numbers have reduced due to age or moving from the village. So one or two new volunteers for cleaning would be welcome. (Tel. 703449).

The children from school came to church the following Tuesday with their gifts which were distributed round the village. Remembrance Sunday will have been held, 14 November. The carol service with Rev. Mandy is at 2.30pm on 19 December.

It has been a year for weddings with three being held. Best wishes to Trevor and Karen on 27 November. At the end of the year, it is thank you to all who keep the church open, the secretary, treasurer, churchwarden, heating engineer, church-yard maintenance, cleaners, bell ringers and those who decorate with flowers and evergreens.

News from Thorney

Our **Macmillan Coffee Afternoon**, which was held on **Sat 25th September**, was well supported & raised **£300**. Many thanks to all who supported the event in any way.

Our **Harvest Celebration** on Sunday 3rd October started with a DOWNPOUR, but then the sun came out! A good crowd walked behind Mick's vintage tractor, singing and bringing gifts for the local Foodbank at Collingham, which supports people living in all of our local villages. There were fantastic plastic Scarecrows, a raffle, thanksgiving and food to share with friends. Thanks for coming!

Sunday 17th Oct **Morning Worship** started at 10am to finish in time for the **Village Clean-up**. Refreshments were then available to returning cleaner-uppers! Much appreciated.

THORNEY CHRISTMAS EVENTS COMING UP

Sunday 5th Dec - Holy Communion 10.30am in St Helen's Church.



Sunday 5th Dec at 3.30pm - **Lighting up the Village Christmas Tree** opposite the Play Park. Please bring a bauble from your household to add to the tree. The Draw for the Xmas Hamper will also be done approx. 4.15pm. (Lucky numbers available at a £1 each from Clare Welfare or via Thorney FB group after Dec 1st.) Mince pies, sausage rolls & mulled wine may also be available for a small donation to help cover costs!

Wed 15th Dec - **Library Van visit & Christmas Coffee Morning from 10.30-12noon**. Please bring a wrapped present (costing no more than £5) and you will be able to choose one to take home with you. Look forward to seeing you.

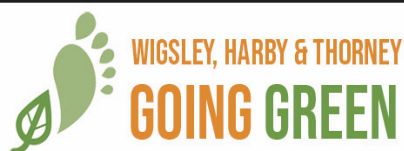
Wed 15th Dec at 7.30pm - **CAROLS BY CANDLELIGHT** in St Helen's Church with the Lincs Fire and Rescue Concert Band! This will be a ticket-only (FREE) event due to number restrictions because of COVID.. Priority for tickets will go initially to people taking part in the service, regular churchgoers at St Helen's followed by Thorney Residents & if space permits, people from nearby villages too. **Tickets must be reserved in advance from Dec 1st** by contacting Anna on: annardennison@aol.com or Tel: 01522-702748.

Sun 19th Dec - **Carols around the Village Christmas Tree at 3.30pm**. Join us for a festive singalong & who knows more mulled wine and mince pies could be on offer. Bring your torch!

And into the new year..... a very Happy New Year to you all!

Sunday 2nd Jan 2022 - **CHRISTINGLE Service at 3pm** in St Helen's Church. If you don't know what a Christingle is, come along and find out! A short informal time together, making a Christingle, followed by light refreshments. Families particularly welcome.

Jan 16th - **Morning Worship at 10.30am** in St Helen's church. Lay Led informal service. All welcome.



whtgoinggreen.org

A sincere thanks to everyone who joined us for one of our latest WH&T Going Green events, the Great Big Green Saturday on 2nd October and the Great Autumn Community Clear Up on 17th October!

The Great Big Green Saturday was a fantastic feel-good community event held as part of the Great Big Green Week, a nationwide initiative which aimed to highlight the urgency to tackle climate change. Held at the Harby Village Hall, our event was supported by Newark & Sherwood District Council and the waste management company Veolia. It featured many interactive activities such as an 'Are You Bin Smart?' competition. Visitors also enjoyed healthy autumn recipe demos with delicious homemade broccoli soup and blackberry and apple crumble as well as a wide selection of yummy cakes made from local ingredients. We all picked up one or two new ideas on eco-friendly living and the simple steps we can take to reduce our impact on our beautiful planet Earth.



On Sunday 17th October our three villages held the Great Autumn Community Clear Up. Despite the weather having a mind of its own and turning rather wet and autumnal ☁️, we had a lot of fun catching up with our neighbours and making friends with new families who had recently moved to our villages. Together we cleared litter from our streets, cleaned road signs and washed down notice boards and street furniture. The total 'find' of rubbish appeared to be down compared to our Great Spring Community Clear Up when our volunteers collected more than 40 bags full of litter! Fly-tipping is a big issue for our three villages and so we aim to continue our efforts to keep rubbish off our streets. Not only does improperly disposed of waste look unsightly but it is also dangerous for us, our children and our wildlife.



Thank you everyone who took the time from their busy schedules and joined us for our events! Planning is already underway for our next WH&T Going Green event so why not visit our website whtgoinggreen.org or join our facebook group facebook.com/groups/whtgoing for tips on eco-friendly living and to find out more about our upcoming projects.

Harby Scarecrow Festival 2021

Our first Scarecrow Festival went very well with those taking part thoroughly enjoying making their Scarecrows. Lovely to see an imaginative use of materials ranging from flowerpots, maize plants, dried foliage, baubles and sacking, through to traditional old clothes and straw.

We had a surprising range of characters from Harry Potter, Queen Eleanor at the B&G, school children at work, a 6 foot Bride to Humpty Dumpty sat on his wall. Mario and Luigi, Farmer McDonald, Laisy Daisy and Bert the gardener taking their ease! Mildred the Forager, Farmer Pumpkin, a daring Goaley, Mr Potts and Maizey!! I enjoyed walking around and photographing each one. Cars and people walking by stopped to study each tableau with many compliments passed on.

The pleasure received and given by our creations has prompted me to put this forward as an annual event. I hope all those who, like me, had not made a scarecrow before will see that they can be as simple or dramatic as you like. I am already planning next year's model!

(See last 2 pages for full story with photographs)

Harby Playing Fields Update – Autumn 2021

PLAY AREA

The play area was reopened on 16th October to coincide with the start of the half term holidays.

An official opening ceremony took place on 24 th October when the facilities were officially opened by Sophie Wells our own multiple Paralympic medal winner (4 Gold and 5 Silver to date). Around a 100 people had gathered to greet this milestone for the village. Sophie cut the ribbon to open the play area and afterwards posed for selfies whilst the children and some of the adults tried out the new equipment.

Friends of Queen Eleanor School also benefited from the event by running a small stall.

During half term and since then the play area has seen a record number of users, these include our own village children and grandchildren, biking families and some less abled groups from the area.

The enhanced facility is credit to the village and our thanks go to all those involved.

THE BONFIRE

This event is the major fundraising event of the year for our Charity playing field, without this we would not be able to sustain the facilities for the village. The last two years have been called off due weather conditions and then Covid 19. This year with the substantial commitment of a sub committee and an amazing number of volunteers we were able to successfully run the event.

A number of points were key to the success: Better signage and media advertising. Rave fireworks display company were employed to provide an uplifted 20 minute display that many said was the best ever. The bonfire was provided from a controlled source gave us a substantial blaze of known size and materials for everyone to enjoy. The food range was extended to include burgers, sausages, pies, peas and hot drinks, these are locally sourced and were prepared in the village by a large team who worked amazingly hard on the night to feed the crowd. All feedback has been giving top reviews. We added a second outlet to sell cold drinks, confectionery and even 'glow tube' jewellery, this stall was staffed mostly by school teenagers who did a fantastic job. The music and PA system was provided by DJ George who kept everyone informed and entertained throughout the evening. First Aid and Lost children was provided by Nic and Phil Haywood although thankfully they had little to do in that area and could help out elsewhere. The major challenge was the number of visitors to the event. Given that the 5th fell on a Friday and that the weather was favourable we were 'blessed' with the largest attendance to date.

Paul Nolan and his on site car parking team efficiently parked all possible cars on the playing field and then moved to an overspill facility field (provided at short notice by Chris Medley).

The village roads experienced some poor parking and it needed patience from all concerned to manage the problem, we apologise to those affected by the disruption to normal traffic flows and thank those who assisted in clearing the blockages. By use of a one way exit from the village for each car park we were able to clear the area quickly so that all areas returned to normal by late evening. We are fully open to feedback and suggestions so that we can better plan and manage this part of the event.

The takings from this event are between 2 to 3 times the previous record and despite higher costs we are likely to clear around £10k for the Playing Field Charity. This will be reinvested in the facilities that are provided for the village as the committee continues to upgrade the offering.

We would like to thank all those involved in the the event for their time and skills and also the villagers for their forbearance for the few hours it takes to raise our vital funds.

John Howard
Deputy Chair

“My feet are killing me”

If this sounds like you, then call to book your appointment NOW!

Most foot problems can be treated quickly and easily, there's no need to suffer in silence.

Sally Smith

Body and Sole

The Country Clinic with the Calming Air

Chiropodist

Lime Grove Clinic, High St, Harby, Newark, Notts NG23 7EB

01522 704294 or 07974 580 262

Dogs Achieving

- **Recall practice**
- **Walking without pulling**
- **Dog Agility**
- **Dog Parkour**

- Fully enclosed field
- 30+ years of experience

Please contact me if you are interested:

<https://inneragility.co.uk/dogs-achieving>

FaceBook: Dogs Achieving

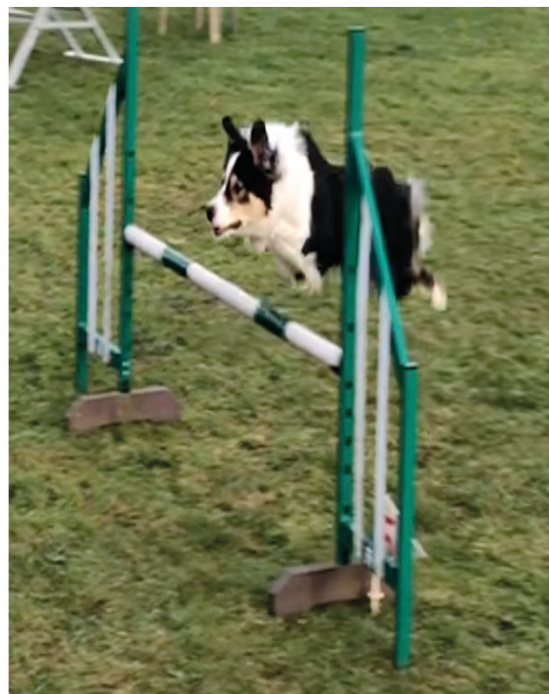
Monday to Friday

10:00 am - 4:00pm

Groups or one to ones

Karen Laker

Tel 07803 814627



COLLINGHAM MEDICAL CENTRE

SURGERY OPENING HOURS

Monday – Friday 8.00am - 6.15pm

For Appointments telephone: 8.00am – 6.15pm

For Prescriptions telephone: 10.00am – 12.00pm

**High Street
Collingham
Newark NG23 7LB
Tel: 01636 892156**

Email: collingham.medicalcentre@nhs.net

CHRISTMAS 2021

Monday 27 December – CLOSED

Tuesday 28 December – CLOSED

Monday 3 January 2022 – CLOSED

(Normal opening hours all other days)

The Collingham Medical Centre team would like to wish everyone a very Merry Christmas and Happy New Year.

We also offer a very warm welcome to new team members Dr Edda Schuerch, Dr Kate Rees and Sarah Holt, Respiratory Specialist Nurse.

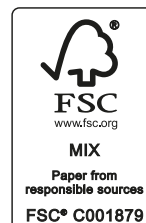
Our communication with patients relies on current information. If your personal details change, including telephone numbers, please let the practice know. Thank you.

Out of Hours Service is provided from 111 when the surgery is closed.

Website: www.collinghammedicalcentre.co.uk

The Trio is printed by **Ruddocks**, a family owned business holding ISO14001 environmental management certification along with FSC® certification. They are also a corporate partner to IEMA (Institute of Environmental Management and Assessment). The paper used is from sustainable sources and each edition carries the FSC® certification claim. Along with these certifications Ruddocks also carbon capture all of their paper purchases as they strive to go Carbon Neutral by 2030.

This means your latest edition is the most environmentally friendly and sustainable it has ever been. *Enjoy reading and if you decide not to keep it, please recycle it.*



THORNEY DEFIBRILLATOR UPDATE & Safety in the Village

Well done to over 30 villagers who attended one of the three Defibrillator training sessions held in St Helen's Church on Sept 30th & also October 30th. Apart from learning how to use the defibrillator we were also given basic essential CPR training which is most effective when used in conjunction with the defibrillator. Rest assured, anyone can use the defibrillator in an emergency as clear verbal instructions are given for you to follow. *One of the most critical things is you can contact the emergency services to summon help & advice and they will advise you of the location of the nearest defibrillator & the code you need to punch into it to release the defibrillator from its casing for use.*

As we all live in a rural location and may be in an isolated spot when we find someone needing urgent help, can I put in a plea for you *to always carry your mobile phone, fully charged & ready for use when you go out.* This is also particularly relevant for dog walkers out on their own. In these darker early mornings & evenings it is also worth remembering to wear a fluorescent top/jacket when you go out walking as vehicle drivers often only see you at the very last minute if you are not wearing something reflective. Please keep yourself safe.

Lincoln Christmas Market will be held from Dec 2nd to 5th inclusive. Not wishing to be alarmist, but our local police have advised us this is a high risk time for rural crime over these four days as it also coincides with darker evenings. Just be aware of this & check your property & outbuildings are secure as well as keeping an eye out for your neighbours too.

THE BOTTLE & Glass

CELEBRATE THE

Festive Season

WITH US



Christmas

Celebrate your Christmas Party with us!

3 Courses for £30
Prosecco on Arrival
Available 12th Nov - 24th Dec

Scan for more information! →



New Year's Eve

See in 2022 in style at The B&G!

5 Course Tasting Menu
Wine Pairing
Champagne on Arrival
Champagne at Midnight

Scan for more information! →



@bottleandglassharby
 @bottleandglassharby
 @BottleGlassPub

Tel: 01522 703438

 thebottleandglasspub
 Harby, Newark, NG21 7EB

SOUTH CLIFTON

REFILL STATION

EVERY SATURDAY 10AM-12PM @ THE RON BEAT PAVILION, SOUTH CLIFTON

Ethically sourced, sustainable and cruelty free household products!

Bring along your containers and we'll fill them!
Prices by volume—fill as much or as little as you'd like

Here are just some of the fantastic products available:

 NATURAL SHAMPOO £1.32 per 100ml	 NATURAL CONDITIONER £1.32 per 100ml
 BODYWASH £1.48 per 100ml	 MULTI-PURPOSE CLEANER 28p per 100ml
 NON-BIO LAUNDRY LIQUID 25p per 100ml	 FABRIC CONDITIONER 19p per 100ml
 HAND SOAP 48p per 100ml	 WASHING-UP LIQUID 22p per 100ml

We also stock a wide range of ethically sourced household items from scourers, sponges and soap dishes to toothbrushes, dental floss and hairbrushes



CAKE AND REFRESHMENTS ALSO AVAILABLE
Pop over for a drink and chat—we'd love to see you!

Takeaway and outdoor seating. Social distancing rules apply and masks must be worn inside the station



For our full product range, check out our Facebook page or come down and see us!

 www.facebook.com/southcliftonrefillstation






Forest & Fen Services



Professional Oven Cleaners



‘cleaning ovens in an eco-friendly way’



see our website for full pricing & more details

contact us
to arrange your clean

www.forestandfen.co.uk

07845 292950

forestandfen@outlook.com

Harby Parish Council Update

Clerk

Where has this year gone? I hope that you are all getting ready for the festivities, meeting with friends and families, which so many of us missed last year - whilst still taking care.

Parish Council Annual Walkabout

The Parish Council held their annual walkabout on Sunday 24th October. Some might ask why we do this? But it gives all the Councillors some to take time to look around the whole village, rather than just their regular walking routes and identifying some of the issues that might not be spotted otherwise.

A lot of potholes and drainage issues have been reported this year to Nottinghamshire County Council and some of them have been resolved already, whilst others may have to wait some time to be addressed, along with some of the queries we have raised in previous years.

We have also raised an issue with Newark & Sherwood District Council about the maintenance around the play area and planting bed on Darbyshire Close. The Parish Council are hoping to work with NSDC and a working party of residents in the Spring to pull out some of the weeds etc and have a good spring clean in the area. Please let us know if you would be interested in helping with this. Just drop us an email **ParishClerk@Harby-Notts.org.uk**

Did you know that 23 million People Used 123456 As A Password? Are you one of them?

Whether it's your Facebook, Amazon, or Netflix account, the explosion in popularity of online apps and services means more and more of us have to remember an increasingly long list of passwords.

Unfortunately, some of us cope with this challenge by resorting to practices that leave our data, devices and money at risk - by using the same password across multiple accounts, or by creating simple passwords that could easily be guessed by hackers. Bad password practice is more prevalent than you might think - the UK's National Cyber Security Centre carried out analysis of passwords leaked in data breaches and found that more than 23 million users worldwide used 123456 as a password. You can read more about it here: <https://www.ncsc.gov.uk/news/most-hacked-passwords-revealed-as-uk-cyber-survey-exposes-gaps-in-online-security>

Here are some top tips that will make your life easier and online accounts more secure:

1: Creating memorable passwords

A good way to create strong, memorable passwords is by using 3 random words. But remember, don't use words that can be guessed (like your pet's name). You can include numbers and symbols if you need to. For example, "RedPantsTree4!"

2: Saving passwords in your browser

Saving your password in your browser means letting your web browser (such as Chrome, Safari or Edge) remember your password for you.

3: Email account passwords

If a hacker gets into your email account, they could:

- reset your other online account passwords
- access personal information you have saved about yourself or your business

Your email password should be strong and different to all your other passwords. This will make it harder to crack or guess.

The next Ordinary Meeting is at 7:30pm, Thursday 20th January 2022 in the Village Hall Committee Room. If any members of the public would like to attend, please let us know in advance as we need to try and maintain Covid security for all attendees. Please see the notice board or the website nearer the time for the full agenda.

Caron Ballantyne, Harby Parish Clerk

 ParishClerk@Harby-Notts.org.uk

 01636 893342

 www.harby-notts.org.uk



MOT Testing
£35



JM AUTOMOTIVE

MOT, Servicing, Repairs, Maintenance
Diagnostic and Fault Finding
Module Coding and Reprogramming
Health Checks
Air Conditioning Repairs & Re-Gas
Brake Servicing and Repair
Cambelt and Waterpump Replacement
Clutch Replacement
Suspension

UNIT 16
RIVERSIDE ENTERPRISE PARK,
SKELLINGTHORPE ROAD, SAXILBY, Lincs, LN1 2FU

01522 244747

Or find us on Facebook @JMAutomotive
VW Audi Group Specialist

Discover Bransby

**Come and visit our
rescued horses, ponies
donkeys and mules!**

Enjoy a great day out for all the
family at our award winning
Visitor Centre, Café & Gift Shop.



**DOGS
welcome**



Pudding's Reindeer Roundup

27th November -
24th December

£5
per child



For more information on opening times, call, find us online or follow us on social media.

BRANSBY
— HORSES —

Find us at LN1 2PH • 01427 788 464
BransbyHorses.co.uk



Charity No: 1075601. Company Limited by Guarantee Registered in England and Wales No: 3711676



Queen Eleanor Primary School, Harby

01522 703428 office@queeneleanor.notts.sch.uk

COMMUNITY NEWSLETTER Autumn 2021



School Places for September 2022



Apply before
January 15 2022

Will your child be 5 years old

between 1 September 2022 and 31 August 2023?

If you live in Nottinghamshire and require a school place for September 2022 you need to apply between **8 November 2021 and 15 January 2022**

You can apply online at nottinghamshire.gov.uk/admissions or, if you need help making an application, contact us on **0300 500 80 80**

Nottinghamshire County Council

UP AND COMING EVENTS

FoQE Christmas Fayre in the village Hall -

Saturday 11th December

Carol Service at Church - Wednesday 15th December 10.30am & 6pm

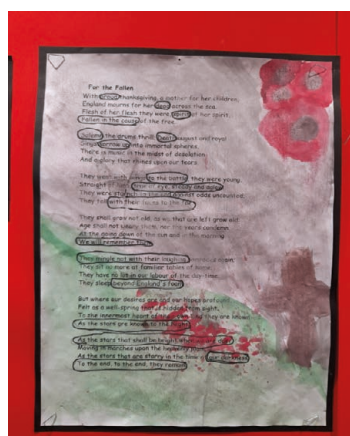
Our History Topic this term is

Children in War—WWII

If anyone has any information or historical

Artefacts, they would like share with the children, please contact Mrs Lister in the school office. As part of the Remembrance Day Commemorations Class 3 have been looking at war poetry. We thought you would like to see a selection of their poems, inspired by

Laurence Binyon - For the Fallen



NURSERY PLACES

for 3 & 4 Year-Olds

Places are still available for 3 & 4 year olds. If you would like to apply for a Nursery place or know of anyone who would be interested, please contact the school office and Mrs Lister will provide you with further detail

We have updated our Nursery outside area over the summer and the children at QEP would like to thank the playing field committee for donating all the play bark from the old play area, on the Harby playing fields. This has come in very useful for tidy up around the edges of the Nursery outside area. Thank very much!





EST 2020

JDH FARRIERY

TAKING ON NEW CLIENTS IN ALL
ASPECTS OF HORSE SHOEING

T: 07393 470352 E: jack.hyde32@hotmail.co.uk



HALL FARM CHRISTMAS SHOP

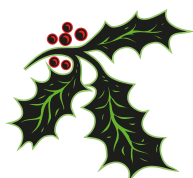
Newton on Trent, Lincoln LN1 2LL



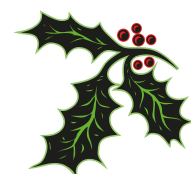
- ★ **FRESHLY CUT HOME GROWN**
Nordmann Fir and Norway Spruce **CHRISTMAS TREES**
available from 27 November - delivery can be arranged
- ★ **TREE AND HOME DECORATIONS**
- ★ **INDOOR AND OUTDOOR LIGHTS**
- ★ **GIFT WRAP AND BAGS**
- ★ **FRESH WREATHS AND HOLLY**

OPEN EVERY DAY FROM
TUESDAY 16TH NOVEMBER
10am – 5pm

Also on site is The Courtyard Tearoom



Tel. 01777 228215 or 07879 885379



Forthcoming Events

DECEMBER 2021

- Sun. 5th – St Helen's Church, Thorney, Holy Communion, 10.30am
- Sun. 5th – Thorney play park, Lighting Up the Christmas Tree 3.30pm
- Thurs. 9th – Craft Circle, Harby Village Hall Lounge, 1.30pm – 3.30pm
- Sat. 11th – Queen Eleanor Primary School Christmas Fayre, Harby Village Hall & Harby Winter Wonderland Window Trail 4.00pm – 7.00pm
- Wed. 15th – **Mobile Library: Harby** Station Road 9.50-10.05, Queen Eleanor Primary School 10.05-10.40, Millfield Close 10.45-11.00. **Wigsley** – Post Box 11.05-11.15. **Thorney** - Church 11.20-11.50 Christmas Coffee Morning 10.30-12.00 *please bring a wrapped present*
- Wed. 15th – Queen Eleanor Primary School Carol Service, All Saints Church, Harby 10.30am & 6.00pm, all welcome
- Wed. 15th – St Helen's Church, Thorney, Carols by Candlelight, with Lincoln Fire & Rescue Brass Band, St Helen's Church, Thorney 7.30pm (see main article for ticket details)
- Sun. 19th – Thorney - Carols around the Village Christmas Tree 3.30pm
- Sun. 19th – All Saints Church, Harby, Carol Service 3.00pm followed by mulled wine & mince pies

JANUARY 2022

- Sun. 2nd – All Saints Church Harby, Holy Communion 10.30am
- Sun. 2nd – St Helen's Church Thorney, Christingle 3.00pm
- Wed. 12th – **Mobile Library: Harby** Station Road 9.50-10.05, Queen Eleanor Primary School 10.05-10.40, Millfield Close 10.45-11.00. **Wigsley** – Post Box 11.05-11.15. **Thorney** - Church 11.20-11.50 Coffee & chat 11.00-12.00
- Thur. 13th – Craft Circle, Harby Village Hall Lounge, 1.30pm – 3.30pm
- Sun. 16th – St Helen's Church Thorney, Morning Worship 10.30am
- Thur. 20th – Harby Parish Council Meeting, Harby Village Hall, 7.30pm
- Wed. 26th – Harby History Group, Harby Village Hall Lounge 7.30pm
- Thurs. 27th – Craft Circle, Harby Village Hall Lounge, 1.30pm – 3.30pm

Toddler Group, Harby Village Hall, every Thursday (term time) 10.00am
Harby Art Group, Harby Village Hall, every Wednesday 1.00pm-3.00pm

Please contact Jayne Rose if you would like your future events to be included
Tel. 01522 703510 or e-mail: jayne@oldcobblers.co.uk

Village Clubs & Organisations Contact List

HARBY

Parish Council	Caron Ballantyne	01636 893342
Bowls Club	Carol Dallamore	703461
Playing Field	Pat Mackenzie	702906
Village Hall	Janet Medley	07733 273524
	Jayne Rose	703510
Queen Eleanor School	Mrs J Woolnough/Lisa Lister	703428
Newsletter	Ann Williams	703766
Bellringers	Jayne Rose	703510
History Group	Louise Herrick	703662
Parent Toddler	Kathryn Chapman	07946 472278
Heating Oil Syndicate	David Rose	703510
Friends of Queen Eleanor	Cora Jones	07860 641795

Nottinghamshire Police	PC Gareth Nicholls	07525 226394
	Non-Emergencies	101
CLP	Janet Medley	703304
Craft Circle	Sue Paine	702518
C of E East Trent Admin	Christine Hasman	01636 679105
T H & W Car Scheme	Clare Welfare	07717 178800
HARBY CLP	Jayne Rose	703510

WIGSLEY

CLP	Clive Thompson	702014
-----	----------------	--------

THORNEY

CLP	Anna Dennison	702748
-----	---------------	--------

Harby History Group

– Louise Herrick 703662 - email: harbyhistory@outlook.com

In September, we were back in the village hall for the first time since February 2020. Dr Erik Grigg gave us an entertaining presentation on “Early Medieval Lincolnshire”. The area of Lincolnshire we focused on was known as Lindsey. After the Romans left Lincoln there seemed to be a gap until the Vikings invaded. Even then, despite all evidence, little is truly known about the era. Through the years, many artifacts have been found but although on the face of it they look as if they are from either the Roman or Viking era it may just be that they have been copied from the fashion of the time. For example, a brooch may be copied from a certain period’s style. Or a list of names of kings does not show that the person was from a certain race as names from invaders were integrated into the existing community and used, much as the children’s names of today sounds very exotic compared to those of babies born 25 years ago. Language was another area where many things started to merge and some words were more popular than others so stuck around in our language today. So, the basics were that although there are many sources of evidence of the past, you must draw your own conclusions on what happened and why so actually history is often just speculation.

In October we celebrated our 150th meeting with guest speaker and local author, Sarah Hogg, gave a presentation about her book, “Katherine’s House”. Sarah is the current owner of Kettlethorpe Hall a house with a rich history. She decided to write a book about the past residents of her home and did so in novel form, each chapter being its own short story. The story starts in 873 when the Saxons were in England and the settlement of Kettlethorpe began when the Vikings arrived. Each tale moves through famous events in local history, often that have national importance. We move from the Battle of Lincoln, right through to the tanks of World War I and finally end in World War II. In between we learn of other historic events and about the people including the Hall’s most famous past resident, Katherine Swynford, Duchess of Lancaster. Katherine was the mistress and later wife of John of Gaunt, who was a son of Edward III. Their descendants became significant in British History and the Tudor dynasty was directly descended from them. Katherine is buried in Lincoln Cathedral. At the end of the presentation, books were available to buy and be signed by Sarah.

Coming up:- 24 November – Sleas Navigation. *Returning guest speaker Graeme Wade.*

After this will be our Christmas break so for next year’s events, please see the 2022 calendar below.

Meetings are on the last Wednesday of the month in the village hall lounge and unless specified start at 7:30 pm. £2 entry. Everyone is welcome. Please phone me if you want more information or even just a bit of encouragement to attend. New members welcome on a regular or casual basis.

HARBY HISTORY GROUP CALENDAR FOR 2022

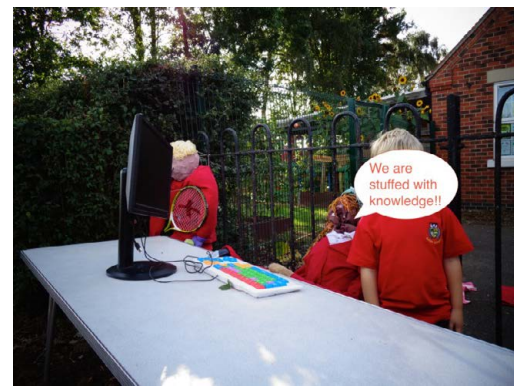
26 January – One Man’s War in the Forgotten Front of East Africa. *Returning guest speaker Richard Pullen.*
23 February – The English Civil War. *Member speaker Harold Paine.*
30 March – The History of Campions Cycles. *Returning guest speaker Dave Crofts.* Books for sale on the night.
27 April – RAF Wigsley. *Guest speaker David Potter.*
25 May – Historic Tour of Retford. Trip. *Guided by previous guest speaker & guide, Sam Millard.* 7pm start.

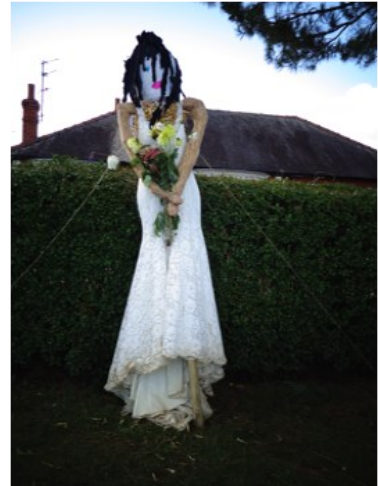
29 June – Lincoln at War-Through the Ages Tour. Trip. *Tour by previous guide Brian Taylor.* 7pm start.
28 September – The Local Homefront in World War II. *Returning guest speaker Elaine Johnson.*
26 October – The Battle of the Somme. *Member speaker Richard Croft.*
30 November – Rattlejag Morris - An Introduction to Plough Morris. History of Morris dancing and a chance to have a go.

Harby Scarecrow Festival 2021

Our first Scarecrow Festival went very well with those taking part thoroughly enjoying making their Scarecrows. Lovely to see an imaginative use of materials ranging from flowerpots, maize plants, dried foliage, baubles and sacking, through to traditional old clothes and straw.

We had a surprising range of characters from Harry Potter, Queen Eleanor at the B&G, school children at work, a 6 foot Bride to Humpty Dumpty sat on his wall. Mario and Luigi, Farmer Mcdonald, Laisy Daisy and Bert the gardener taking their ease! Mildred the Forager, Farmer Pumpkin, a daring Goaley, Mr Potts and Maizey!! I enjoyed walking around and photographing each one. Cars and people walking by stopped to study each tableau with many compliments passed on. The pleasure received and given by our creations has prompted me to put this forward as an annual event. I hope all those who, like me, had not made a scarecrow before will see that they can be as simple or dramatic as you like. I am already planning next year's model!





Thank you to everyone who took part and lovely to see how your endeavours stood up well to the adverse weather we had over that weekend.

Well Done Harby

Carol Dallamore
