



Golden Orb
The Granary, Western Court
Bishops Sutton
Alesford
Hampshire
SO24 0AA
www.goldenorb.com

Road

Old Stratford Roundabout

Carriageway

Roundabout

Description of Works:

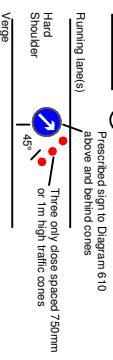
Traffic Management
Inner Ring Management

Notes:

1. All signs and cones to be in accordance with Chapter 8-2009, the TSRGD and current IAN's.
2. Works access and egress are indicative, exact locations to be agreed on site.
3. Safety zones are to be installed as required.

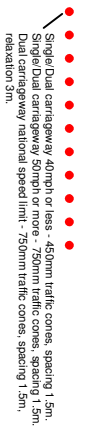
Chapter 8 Details

DETAIL A



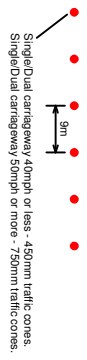
Notes:
1) During daytime, a single warning light to BS EN 12352:2006 should be provided.
2) Traffic cones should conform to diagram 7101.1 and to BS EN 3422

DETAIL B



Notes:
1) During daytime, warning lights to BS EN 12352:2006 should be provided in accordance with Table A1.3 (Appendix 1).
2) 45° markers have 1.5m spacing, no relaxations.
3) On motorways and TSSA roads with hard shoulders, 1m spacing and 45° markers should be used for the length of the works for field lapsers and the lining wall of lane changes.

DETAIL C1



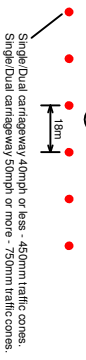
Notes:
1) During daytime, warning lights to BS EN 12352:2006 should be provided in accordance with Table A1.3 (Appendix 1).
2) For relaxation to Detail C1 see Table A1.3 (Appendix 1).

DETAIL C2



Notes:
1) During daytime, warning lights to BS EN 12352:2006 should be provided in accordance with Table A1.3.

DETAIL D

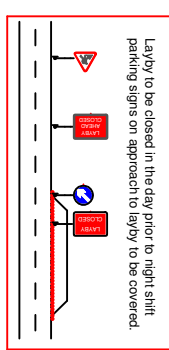
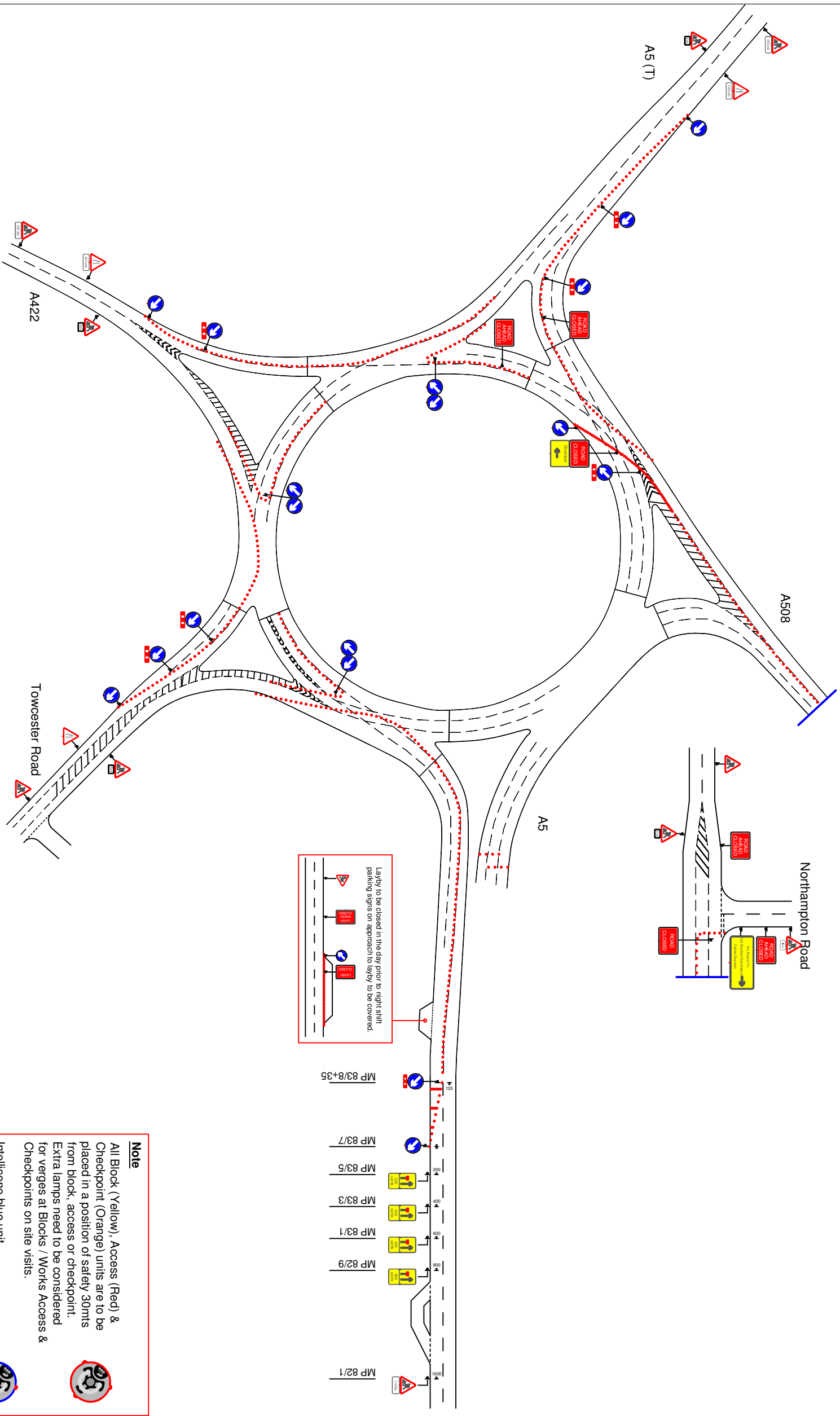


Notes:
1) During daytime, warning lights to BS EN 12352:2006 should be provided in accordance with Table A1.3 (Appendix 1).
2) Detail D applies only to relaxation cases.

Drawn by:	L.Johnson
Checked by:	C.McKeen
Reviewed by:	
Date:	10.01.2018
Scale:	Not to Scale
Job No.:	
Client:	

CHEVRON

Drawing No:
560371-CTM-OLDSTRATFORROUNDABOUT-SCENARIO-D-REVA



Note
All Block (Yellow), Access (Red) & Checkpoint (Orange) units are to be placed in a position of safety 30m from block, access or checkpoint. Extra lamps need to be considered for verges at Blocks / Works Access & Checkpoints on site visits.
Intelligence blue unit to be placed in work area.

Note:

Sign with cone and flashing light to be placed in advance of first warning sign in a suitable location



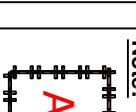
Note:

LTMO/Foreman to risk assess if sign is required on exit slips and suitability of location



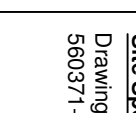
Note:

Hatched Area represents works area



Note:

Airlock System to be installed after initial contractor deployment



Site Specific Notes:

Drawing to be used with:
560371-CTM-OLDSTRATFORROUNDABOUT-SCENARIO-D-REVA-DIV