

CONTACTS

Church of England at St Mary's, Church Services:	The Rector Rev. Nick Clarke. Tel 07842 192402, revnickclarke@gmail.com
1st Sunday 11.00am Cafe church in All Saints Hall	
2nd Sunday 11.00am CW Holy Communion	The Vicarage, 1 Castle Street TA14 6RE
3rd Sunday 11.00am Morning Praise	website: www.hamhillchurches.org
4th Sunday 11.00am CW Holy Communion	
1st and 3rd Wednesday 9.00am BCP Holy Communion	
ALL SAINTS HALL BOOKING SECRETARY	Ann Davison 07709 609488
BOYS BRIGADE - Meets weekly at Martock Christian Fellowship on Thursdays: Juniors 6pm-7:30pm. Older members 7:30-9pm.	Ian Rumbelow 07851817927
BRIDGE CLUB - Weekly - Monday starting at 8.30pm (Working Mens Club)	
BROWNIES - Weekly - Every Tuesday during term time (Hamdon Youth & Family Centre)	Jackie Poole 01935 823606
FLEXERCISE FOR FUN - At Oak Tree House every Monday at 2.30pm	Di Ramsay 0845 6434702
FOOTBALL - SENIOR TEAMS - Training Tuesday evenings 6.30pm. Matches weekend	Steve Deane 07881 464280 email: stevekatherine@hotmail.co.uk
FOOTBALL - YOUTH TEAMS - Training weekday evenings. Matches Saturdays & Sundays	Contact Tim Brooks (Chair) stokefcchair@gmail.com 07788 654231 or Steve Arnold (Secretary) 07775 562122 stokefcsec@gmail.com
FOOTPATHS - problems and issues contact:	cllr.hulett@stoke-sub-hamdon-pc.gov.uk
GARDENING CLUB - Monthly - Fourth Wednesday 7.30pm (Memorial Hall)	Secretary: sec.sshgardeningclub@gmail.com. Tel : 01935 823691
HAM HILL COUNTRY PARK - VOLUNTEER RANGERS - Weekly Weds 9.50am-3.30pm (Ranger's Office)	Paul McNeill 07973 887129
HAMDON MEDICAL CENTRE	01935 822236
HAMDON YOUTH & FAMILY CENTRE - West Street	Contact: www.hamdonyouthcentre.co.uk email: hamdonyouthcentre@gmail.com
HISTORY GROUP	Carol Parker 825393
MEDITATION GROUP - Tuesdays at 7.30pm at Priory Coffee	Emma Herrod 01935 829443
MEMORIAL HALL BOOKING SECRETARY	Bookings Jill Uhlhorn: 01935 829513
PARISH COUNCIL - Monthly First Wednesday 7.00pm, Unit 7, North Street Workshops	Chair Mike Phillips cllr.phillips@stoke-sub-hamdon-pc.gov.uk Neil Bloomfield, Clerk clerk@stoke-sub-hamdon-pc.gov.uk Website: stokesubhamdoncouncil.com
POST OFFICE COUNTER (INSIDE STOKE COMMUNITY SHOP)	
OPENING TIMES Monday & Friday 9.00am to 12 noon, Thursday 1.00pm to 4.00pm (excluding Bank Holidays)	
STOKE AND DISTRICT ANGLING ASSOCIATION	Derek Goad 01935 824337 email: goadfish02@gmail.com
STOKE BABY & TODDLER GROUP - Memorial Hall. Thurs.9.30am to 11.30am in term time	carolyn_lefley@hotmail.com Facebook: @StokeBabyAndToddlerGroup
STOKE COMMUNITY SHOP OPENING HOURS - Monday to Friday 8am - 4.30pm; Saturday 8am – 4pm; Sunday 8.30am – 12.30pm	01935 509100
STOKE AFTERNOON TEA CLUB FOR OLDER PEOPLE. Lighthouse Café, every other Wednesday at 2.15pm	Lisa Wenborn 07515 489587 or Kay Clamp: 07717 453523
STOKE SUB HAMDON BAND - Monday & Thursday 8.00pm - 10.00pm Castle School	Gill Robins 01935 329904
Training Section Thursdays 19:00 – 19:45 at Castle School	Jane Herbert 01460 351123
STOKE SUB HAMDON SPORTS & RECREATION TRUST - www.stoke-rec-trust.co.uk	Contacts: Chairman – John Allen, email info@stoke-rec-trust.co.uk, Secretary – Peter Hulett 01935 824784, Fundraising Co-Ordinator – Denise Burton 01935 827793
STOKE PERFORMING ARTS GROUP	Contact Jeannie 07967 184952 or info@stokeperformingartsgroup.co.uk
STOKE WALKING GROUP , every 2nd and 4th Monday of the month	Penny on 822208 or Mark 07496 148756
TTINY TURRETS (Castle Primary School) - Foundation Stage Unit for children aged 2 - 4 years	Castle Primary School Office 01935 822342
Two daily sessions 9.00am - 12 noon and 12 noon - 3pm. Extended provision available from 7.45am - 5.30pm ages 3+	
TRIANGLE TRUST - Raising funds for Hamdon Medical Centre	Jennie Harris 01935 881718
VILLAGE AGENT - Cluster SS2 Cath Holloway	cath@somersetcc.org.uk Tel: 07968 521746
VILLAGE ARTISTS GROUP -	Andrew Toosey (chair) SSHthevillageartistsgroup@gmail.com 07484 142880
(Tuesdays 19.30- 21.30 & Friday 10.00am – 12 Noon (Memorial Hall)during school term times only)	
WORKING MENS CLUB - Daily - Lunch times & evenings	secretary@stoke.club and www.facebook.com/stokeworkingmensclub Mark Greaves 01935 823297
YOUTH CLUB - Weekly - Monday 6.15 - 8.15 Ages 10-13 at Hamdon Youth & Family Centre	Youth Worker Lou on 07402 987921 or email lou.chant@cyp.me.uk

Please send articles for the newsletter, or to advertise forthcoming events to Helen Frances, helenfrances.one@gmail.com by the 16th of the previous month



NEWSLETTER

February 2024

PARISH COUNCIL UPDATE

The Parish Council held its first meeting of 2024 on 16th January, and welcomed three new members to the Council. The new councillors are Martin Dullaghan, Rachael Lewis and Paul Goulder. All three expressed enthusiasm to be part of a council that serves the community well, and which has a can-do style of doing business. They were formally welcomed by new Chair of Council, Mike Philips.

The Council then got down to business, including discussion of the projected impacts of budget cuts at Somerset Council. As widely covered in the media, Somerset Council has to make substantial cuts to its budgets, leading to reductions or even withdrawal of some services. In response, the Parish Council is considering where and how it can mitigate the effects of these cuts in the village, for example in areas such as gully clearance and bin emptying. Taking responsibility for delivering these services as well as addressing ongoing local needs will mean a rise in the Parish Council precept from April, and the Council meets to finalise the 2024-5 budget at the end of January, shortly after this newsletter goes to press.

Allotments were also on the agenda. With an eye to streamlining administrative work, the Council approved plans to remove the annual fee for allotment holders in favour of a non-refundable payment at the commencement of new tenancies. This money will be used to make any site improvements required to maintain the 61 allotments managed by the council.

Neil Bloomfield, Parish Clerk

FANTASTIC FUNDRAISING EFFORT

Stoke & District Angling Association have raised an impressive £4,000 for the Oncology Unit at Yeovil Hospital. The cheque, presented in December, represents the culmination of efforts by all their members and friends throughout 2023.



The Association offers particular thanks to the Rodford and Hebditch families, who allowed them to fish their waters for their charity matches without charge. Other thanks go to Kirsty Broadley & staff at The Ranch Café and Deli who had the idea of a coffee morning and tackle sale which raised £1,100, and to Clifly Gaylard's amazing skittles competition at The Bell in Ash. The support from members of the Ilminster Angling Association, and of course from all the members of Stoke AA also deserves huge thanks – too many people to mention individually. The latest donation brings the running total to £11,470. Congratulations to all.

STOKE PERFORMING ARTS GROUP

PANTO TIME

Tickets are selling fast for the SPAG Panto coming to you this month!

We are presenting 'Jack and the Beanstalk'

On Thursday 15th, Friday 16th and Saturday 17th February, 2024 At Stoke Memorial Hall

Evening performances - Doors open at 6.30pm for a 7.30pm start. Bar and soft drinks available.

There is also a Saturday Matinee - Doors open at 2.00pm for a 2.30pm start. Tea and refreshments available.

Tickets £10 Adults £5 Children (under 16 years).

Available from Stoke Community Shop or text / phone 07967184952.



STOKE SUB HAMDON GARDENING CLUB

Stoke-sub-Hamdon Gardening Club holds its AGM on Wednesday 28th February 2024. It's Membership Renewal time, so it's a great opportunity to join the Club at the beginning of our year and get the most of your membership fee. Do come along if you're curious about what we do! After the AGM the evening will be informal, with a Quiz (local and gardening knowledge); free refreshments; raffle; plant sales.

Venue: Stoke-sub-Hamdon Memorial Hall – doors open 7.15 p.m., meeting starts at 7.30p.m. Visitors very welcome!

STOKE COMMUNITY SHOP

Your village - Your shop.

Christmas raffle winner

Congratulations to Megan Merren from Studio CCK in Stoke who won this year's Christmas raffle prize of the Olaf from Frozen cuddly toy.

Join our super team of Volunteers

It's a great way of getting involved in village life, making new friends and learning new skills. Drop into the shop for a chat with one of our team or email volunteers@stokeshop.co.uk. You can also find out more – and download an application form – at stokeshop.co.uk/volunteering

Help us to plan for the future

We still require new committee members, both to ensure the shop continues operating successfully and to help us plan for the future. Please let us know if you – or someone you know – are interested in getting involved and joining us in running the shop for our community. Priority skills are finance/bookkeeping skills and experience. If you're interested, please email us at shop@stokeshop.co.uk for more information or drop into the shop for a chat.

Free home deliveries

Our grocery home delivery service is here for you if you're unable to get out and about. Call us with your order on 01935 509100 between 9am and 2pm on week days. We can usually deliver the same day if you order before midday.

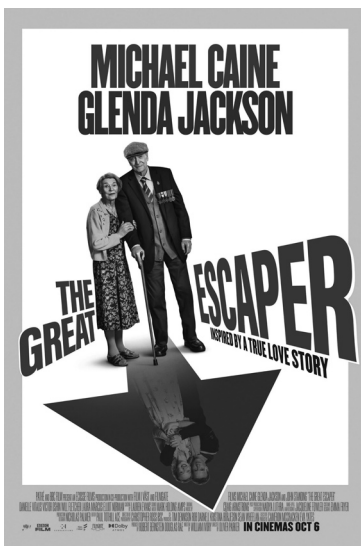
For more information about the shop and how you can get involved, visit stokeshop.co.uk or

www.facebook.com/stokecommunityshop

FILM NIGHT AT THE MEMORIAL HALL

On February 10th, doors open at 6pm, we are looking forward to seeing *The Great Escaper* 12A.

Oliver Parker directs the real-life story of a World War II veteran. In the summer of 2014, the 70th anniversary of the D-Day landings, octogenarian Bernie Jordan (Michael Caine) made global headlines. He'd staged a 'great escape' from his care home to join fellow war veterans on a beach in Normandy, commemorating their fallen comrades. Bernie seemed to embody the defiant, 'can-do' spirit of a generation that was fast disappearing. But of course, it wasn't the whole story. Bernie's adventure, spanning a mere 48 hours, also marked the end of his 60-year marriage to Irene (Glenda Jackson). Tickets £5 cash on the door. Refreshments available.



See you there!

VILLAGE ARTISTS GROUP

Our next exciting workshop is on 23rd of March with Kate Field - 10.00am until 3.00pm at the Memorial Hall, Stoke-sub-Hamdon. She will be demonstrating painting animals with acrylics in her own style. Have a look at her website: <https://www.artistkatefield.com/>. The fee for the day will be £35:00 which will include materials and painting canvasses, plus free teas & coffees. All welcome, contact us for more details!!

The Village Artists Group is a very friendly group of amateurs who meet at the Stoke Memorial Hall on Tuesday evenings 7.30 to 9 pm and Friday mornings 10.00 to 12.00 noon during school term time. We share an enjoyment of traditional art at all levels and seek to develop our artistic skills through discussion and an encouraging environment.

Should you wish to learn more about our group, please contact Andrew on (01935) 823691, SSHTheVillageArtistsGroup@gmail.com

Facebook: Stoke Sub Hamdon The Village Artists Group - we look forward to hearing from you.

BEHIND THE SCENERY

Stoke Performing Arts Group includes more people 'behind the scenes' than there are on stage. Every production involves costumes, lighting, music, publicity, building a set, admin and so much more. Pictured here are some of our existing volunteers helping build the set for *Aladdin*.

The group is always looking for people who'd like to be involved.



AFTERNOON TEA CLUB

Stoke-sub-Hamdon's very popular Afternoon Tea Club opens its doors every fortnight on a Wednesday afternoon at the Lighthouse, 2.15pm - 4.15pm. The first date in February is 14th, and then every other week. See Dates for your Diary on page 3.

Why not come and join this lovely social group for tea, sandwiches, cake and a chat, cost £3. For further info contact Lisa on 07515 489587.

MEMORIAL HALL

Regular Bookings

New year – new fitness? Then check out all the fitness classes on offer at the Memorial Hall. There are regular sessions for people of all abilities, including Yoga, Kettle Belles, Zumba and Qigong. More details available on the Memorial Hall website at www.stokememorialhall.co.uk

HAMDON YOUTH AND FAMILY CENTRE

NEW activities!

We're really excited because **Pop Up Play Village** is coming back this February with new owners! Coming to the Centre on a monthly basis, their first session will be in the half term holidays on Friday 16 February at 11 a.m, with another planned near Easter. This mobile educational role play village is for children aged 0 to 8 and their parents. Children can spend time becoming doctors, chefs, vets, builders, cafe owners, shopkeepers, hairdressers, explorers, artists etc. No two play sessions are ever the same so each themed session is different. All of the areas have the dressing up and props needed for your little one's imagination to take them anywhere they, and you, can imagine. You can book online at

<https://popupplayvillage.co.uk/organiser/south-Somerset>. Ticket prices vary according to the number of children and adults.

There's now a new MuayThai/Kickboxing class for teenagers (ages 11 - 16) every Thursday from 7.30 to 8.30. £5 a session, first one free! Want to get fit, get focus, learn a skill and have fun? Come along! The earlier class for ages 4 -10 runs from 6.30 - 7.30. Contact Adam on 07597 939554

More details of all the Centre's activities on our website www.hamdonyouthcentre.co.uk/activities

SAVE THE DATE!

Easter Eggstravaganza fundraiser!

On Easter Saturday (March 30th) there will be a village-wide Easter Egg hunt for children followed by all sorts of entertainment, demos and coffee and cakes all the family in the Hamdon Youth & Family Centre.

All proceeds in aid of the Centre. More details to follow!!



STOKE WALKING GROUP

Stoke Health Walks

The trained health walk leaders offer three levels of guided walks.

Monday walks start at the Lighthouse Café, finishing there for a hot drink and time to talk too. Dress for the weather, stout footwear recommended. Well behaved dogs on leads are also welcome.

- Make Every Step Count. Shorter gentle 30-40 mins walks on good paths. Start at 9.30 on Mondays 12th & 26th February. Please speak to one of the walk leaders if you would like to join us.
- Regular health walk 3-4 miles, about 1 ½ hours. Start at Lighthouse Café 10 am Mondays 12th & 26th February.
- Tuesdays 6th February Longer walk 5-6 miles. Start at Lighthouse Café 10 am, usually an option for a pub lunch on the way back.

For more information about any of these, particularly the shorter or longer walks please contact one of the walk leaders.

Sue 07792311736

Doug 07778946508

Dates for your Diary

FEBRUARY

- | | |
|------|--------------------------------------------------------------------------------------------------------------------------|
| 10th | Film Night at the Memorial Hall.
Doors open at 18:00 for 18:30 screening. |
| 12th | Shorter, gentle Health Walk
from Lighthouse café 09:30 start |
| 12th | Regular Health Walk
from Lighthouse café 10:00 start |
| 14th | Afternoon Tea Club
at the Lighthouse café 14:15 – 16:15 |
| 15th | Jack & The Beanstalk at the Memorial Hall.
Doors open 18:30 for 19:30 start |
| 16th | Jack & The Beanstalk at the Memorial Hall.
Doors open 18:30 for 19:30 start |
| 17th | Jack & The Beanstalk at the Memorial Hall.
Doors open 14:00 for a 14:30 start
and 18:30 for 19:30 start |
| 26th | Regular Health Walk
from Lighthouse café 10:00 start |
| 26th | Shorter, gentle Health Walk
from Lighthouse café 09:30 start |
| 28th | Gardening Club AGM and quiz
19:15 for 19:30 start at the Memorial Hall. |
| 28th | Afternoon Tea Club
at the Lighthouse café 14:15 – 16:15 |

MARCH

- | | |
|------|-------------------------------------------------------------------|
| 13th | Afternoon Tea Club
at the Lighthouse café 14:15 – 16:15 |
|------|-------------------------------------------------------------------|