

**BON APPETIT!**

## **SQUIDGY CHOCOLATE ROLL**

**Serves 6-8**

### **Ingredients**

**60ml (4 tbsp) cocoa powder**

**150ml (0.25 pint) fresh milk**

**4 eggs, separated**

**100g (4 oz) caster sugar**

**225ml (8 fl oz) fresh double cream**

**Fresh strawberries and grated  
chocolate, to decorate**

### **METHOD**

**1. Grease and line a 20.5cm x 30.5cm (8 x 12 inch) Swiss roll tin.**

**Mix the cocoa powder and milk in a small saucepan and heat gently until the cocoa powder has dissolved. Remove the pan from the heat and set aside to cool.**

**2. Whisk the egg yolks and sugar together until pale and fluffy. Whisk the cooled milk mixture into the egg yolk mixture.**

**3. Whisk the egg whites until stiff, then fold into the cocoa mixture. Spread the mixture evenly into the prepared tin and bake at 180c, 160 fan, 350f, mark 4 for about 20 minutes until the sponge has risen and is just firm to the touch.**

**4. Turn out on to a sheet of greaseproof paper and cover with a warm, damp tea-towel to prevent the sponge from drying out. Leave the sponge to cool for 20 minutes.**

**5. Meanwhile, whip the cream until stiff. Spread over the sponge, reserving half for decorating and then roll it up carefully. Do not roll it up too tightly and do not worry if it cracks slightly.**

**Pipe the reserved cream on top and decorate with strawberries and grated chocolate. Serve chilled.**



Need a small load of sand or gravel delivered right to your door  
instead of being dropped in the road;  
small bag, dumpy bag or loose, with a fair price?  
Also I deliver bags of compost, peat, horse compost, growbags.

**GIVE ME A CALL**  
Alan on 07855 768497  
alandownton60@gmail.com

TRADE & RETAIL


**Little Angus**  
FAMILY BUTCHERS

Free Local Delivery Tel: 01305 267317  
Manor Farm, Grimstone, Dorchester, Dorset DT2 9NA

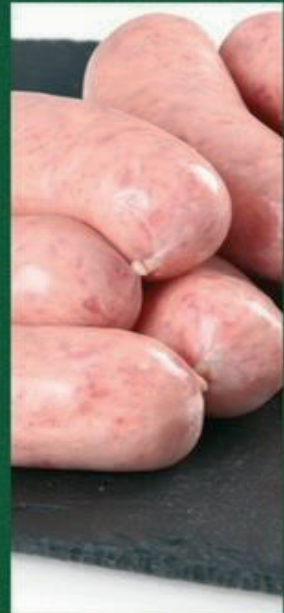
 Find us on Facebook [www.littleangusbutchers.co.uk](http://www.littleangusbutchers.co.uk)



## Frampton Special Option 6 Only £50.00

Free Local Delivery 

2 x 8oz Sirloins  
500g Steak Mince  
500g Diced Beef  
500g Diced Chicken  
500g Diced Lamb  
1.8-2kg Whole Chicken  
450g Rindless Back Bacon  
450g Homemade Sausages  
1kg Mature Cheddar Cheese



PIC • COLLAGE





## **WOODS FUNERAL SERVICE**

**11a Icen Way, Dorchester, Dorset, DT1 1EW**

**Chapel of Rest  
24 Hour Service  
Pre-Payment Plans  
Monumental Masons**

**Members of the  
National Association of Funeral Directors**

**Tel: 01305 250 425**

**Fax: 01305 250 625**

**email: [enquiries@woodsfuneralservices.co.uk](mailto:enquiries@woodsfuneralservices.co.uk)**



British Institute of  
Funeral Directors



## Frampton Directory

### Frampton Parish Council

Charlie Adler, Chair	077 91 285 092
Wayne Lewin (Clerk)	074 19 136735
Andrew Thomson	321 150
Fiona Sarno	
Sandra Christopher	321 719
Patricia Taylor	321 697
Paul Mutti	320 477

**FPC email:** [Frampton@dorset-aptc.gov.uk](mailto:Frampton@dorset-aptc.gov.uk)

[www.hugofox.com/community/frampton-parish-council-dorset-15845/home](http://www.hugofox.com/community/frampton-parish-council-dorset-15845/home)

[/frampton-parish-council-dorset-15845/home](http://frampton-parish-council-dorset-15845/home)

### Frampton Village Hall Trust

Colin Pook (Chairman)	320 200
Vic Pullman (Vice Chairman)	320 003
Neil Hawkins (Treasurer)	320 029
Val Ghose (Minutes Secretary)	320 515
Sam Dauntton (Lettings Sec)	078 16 760 054
email: fvhbookings1@outlook.com	
landline: 01300 321751	

### Frampton Footlights ([www.framptonfootlights.com](http://www.framptonfootlights.com))

Mike Champion (Chairman)	320 694
Karen Graham (Secretary)	320 824
Malcolm Potter (Treasurer/events)	321 008
Mike Champion (Membership) <a href="mailto:championmike111@gmail.com">championmike111@gmail.com</a>	

### Frampton Millennium Green, Harry's Wood

Paul Mutti (Chairman)	320 477
Cynthia Whyte (Secretary)	320 346
Heather Emery (100 Club)	320 785

### Frampton Fete Committee

Nina Garcia	07 818 832 459
Karen Graham (Secretary)	320 824

### Hospitals and Doctors

#### Doctors' Surgeries:

Maiden Newton	01 308 861800
---------------	---------------

<https://www.ammonitehealth.co.uk/econsult>

<https://www.ammonitehealth.co.uk/>

Cornwall Road Medical Practice	01 305 251 128
Cerne Abbas	341 666
GP Out of Hours Service	084 56 001 013

#### NHS Direct (24 hours)

	111
--	-----

Dorset Dental Line (NHS)	01 202 854 443
--------------------------	----------------

<b>Winterbourne Hospital</b>	01 305 263 252
------------------------------	----------------

<b>Dorset County Hospital</b>	01 305 251 150
-------------------------------	----------------

A&E	01 305 255 541
-----	----------------

Hospital website [www.dch.org.uk](http://www.dch.org.uk)

#### Minor Injuries Units (Community Hospitals)

Weymouth (8am to midnight)	01 305 762 545
Bridport (8am to 8pm)	01 308 426 245
Portland (8 am to 8pm)	01 305 820 341
Dorset Emergency Care Service	08 45 600 1013
Weldmar Hospicecare Trust Hospice	01 305 215 300
Weldmar Hospicecare Trust	01 305 269 898

### Schools

St Mary, Charminster	01 305 263 880
Dorchester Middle	01 305 265 651
St Osmunds Middle School	01 305 262 897
Thomas Hardy	01 305 266 064
Sunninghill Prep	01 305 262 306

### FVN Editorial Team

Cynthia White (Chairman/Sec)	320 346
Graham Hart (Treasurer)	079 05 794 484
Sue Forrest (Production)	321 662

Colin Pook	320 200
------------	---------

Jacqui Burden	078 73 989 896
---------------	----------------

David Tharby (Distribution)	320 114
-----------------------------	---------

### Dorset Councillor for Frampton:

**David Taylor** **07 905 352710**

email: [cllrdauidtaylor@dorsetcouncil.gov.uk](mailto:cllrdauidtaylor@dorsetcouncil.gov.uk)

**Dorset Council** [www.dorsetcouncil.gov.uk](http://www.dorsetcouncil.gov.uk)

Out of Hours Emergencies	01 305 221 000
--------------------------	----------------

Magna Housing Association	01 305 261 000
---------------------------	----------------

Dorchester Library	01 305 224 311
--------------------	----------------

Western Area Office	01305 251 010
---------------------	---------------

for: housing, planning, benefits, council tax,  
pubic health, environment, parking, elections

Citizens Advice	01305 262 220
-----------------	---------------

### St Mary's Church, Frampton

Jean Garrard, Administrator	01 305 259 083
-----------------------------	----------------

email: [churches@chalkstream.org](mailto:churches@chalkstream.org)

### POLICE

**Emergency/crime in progress** **999**

**Requiring Police Attendance** **101**

or via [Dorchester-rural-snt@dorset.pnn.police.uk](mailto:Dorchester-rural-snt@dorset.pnn.police.uk)

**Crime Stoppers** **08 00 555 111**

**Dorchester Police Station**  
**(9am - 9pm)** **01 305 226 802**

**Safer Neighbourhood**  
**Answerphone** **01 305 226 815**

**Utilities (emergency numbers)**

Wessex Water	0 345 6004 600
--------------	----------------

Southern Electric	08 00 111 999
-------------------	---------------

Environmental Agency	08 00 807 060
----------------------	---------------

#### Travel

National Rail Enquiries	034 57 484 950
-------------------------	----------------

National Express Coaches	08 71 781 8181
--------------------------	----------------

Damory Coaches	01 202 338 420
----------------	----------------

**NeighbourCar** Catherine Hodgson 341 386

[Frampton Website](http://www.framptondorset.com) [www.framptondorset.com](http://www.framptondorset.com)

### Dorset Alert

<https://www.dorsetalert.co.uk>