



LDF Implementation Plan and Local Investment Plan

Wem & surrounding area Place Plan

2013/2014

CONTENTS

1. Introduction

2. Wem place plan

- 2.1 Vision for Wem
- 2.2 Wem Profile- local evidence
- 2.3 Community led planning in Wem
- 2.4 Wem Delivery Framework

3. Community Hubs place plan

- 3.1 Vision for:
 - Shawbury
- 3.2 Community Hubs profiles
- 3.3 Community led planning in the Community Hub
- 3.4 Delivery Framework for the Community Hub

4. Community Clusters place plan

- 4.1 Vision for:
 - Whixall, Hollinwood, Welsh End, Platt Lane, Stanley Green, Dobsons Bridge, Moss Cottages and Browns Brook
- 4.2 Community Cluster profiles
- 4.3 Community led planning in the Community Clusters
- 4.4 Delivery Framework for the Community Clusters

5. Rural Hinterland place plan

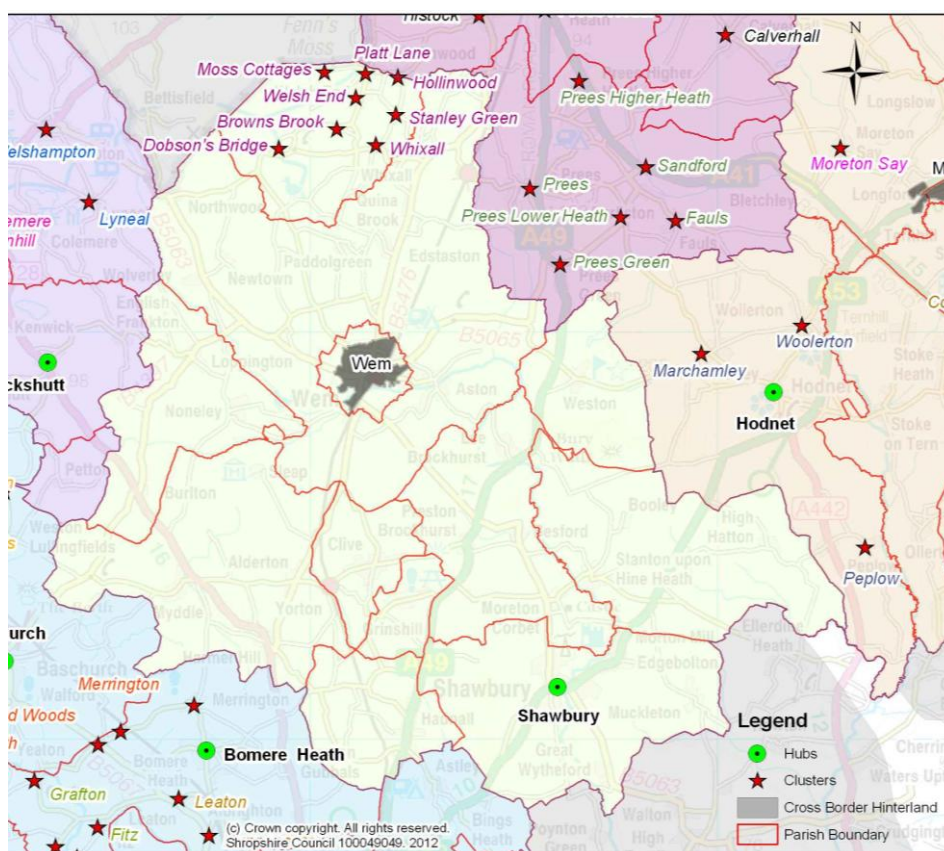
- 5.1 Vision for the Rural Hinterland
- 5.2 Rural Hinterland profile
- 5.3 Community led planning in the Rural Hinterland
- 5.4 Delivery framework for the Rural Hinterland

Appendix 1- Wem Market Town Profile

1. INTRODUCTION

What is this document?

- 1.1 This document is the Place Plan for *Wem and its surrounding area*. It summarises the infrastructure and investment requirements needed to deliver the community vision and aspirations for Wem, its Community Hubs, Clusters and Rural Hinterland.
- 1.2 It covers the area shown in the map, below, which is based on the perceived area of influence for the main settlement, Wem, as identified by Wem Town Council, but excluding areas covered in other Place Plans (eg Whitchurch).



- 1.3 Therefore, whilst this Place Plan covers the area identified, it is important to not that it does not work in isolation, but is part of a set of 18 interlinked Place Plans, covering Shropshire's main settlements and their hinterlands. The above map provides an overview of the Place Plans bordering the Wem locality, in addition to the perceived cross border areas of influence, which lie outside Shropshire and provide a focus for cross border working with neighbouring local authorities and partners.
- 1.4 Within Wem and its surrounding area, one Community Hub and one Community Cluster have been put forward by parish councils in the locality, for inclusion in the Site Allocations and Management of Development (SAMDev) DPD. These are identified on the map and are defined as

settlements or collections of settlements where limited development is needed to ensure that the local community becomes more sustainable. As such, development in these locations will be based on community benefit, such as the provision of local facilities, economic development or housing for local needs. Outside of the identified Hub or Cluster, the remaining area is defined as countryside (Rural Hinterland), where further development, through the SAMDev DPD, will be strictly controlled and only allowed in exceptional circumstances.

- 1.5 The Community Cluster currently identified has been put forward as part of initial work to prepare the Site Allocations and Management of Development (SAMDev) DPD (Development Plan Document). However, further Hubs and Clusters may be put forward as part of future consultation stages in the preparation of the SAMDev DPD. It is anticipated, that the SAMDev DPD will be adopted in 2013 and at this point will confirm which settlements have the status of a Community Hub or Cluster.
- 1.6 There is, however, an ongoing opportunity for communities to 'opt in' as either a Hub or a Cluster at a later stage in the Local Development Framework Plan period (2006-2026), for example through a review of local parish plans. The Council will therefore continue discussions with the local community to identify the community benefits that can be delivered through development.
- 1.7 In identifying the local infrastructure and investment, extensive discussions have been undertaken with relevant town and parish councils, in addition to local infrastructure and service providers.
- 1.8 Whilst this initial version of the Wem Place Plan primarily focuses on the investment requirements for Wem, detailed discussions with parish councils within the Wem locality are ongoing and will inform the updated version of the Wem Place Plan in due course. This is part of an ongoing process of community led working, which will ensure that the Wem Place Plan is kept up to date and continually reflects local needs and priorities.
- 1.9 The Place Plans form part of the Shropshire Local Development Framework (LDF) Implementation Plan and the Local Investment Plan. As outlined in Figure 1, this package of documents is aimed at ensuring the delivery of sustainable places in Shropshire.
- 1.10 The LDF Implementation Plan outlines all the infrastructure requirements which are needed to support the level and location of development for Shropshire, as outlined in the Core Strategy. It covers physical infrastructure (transport, energy, water, waste, minerals and ICT/digital), economic infrastructure (regeneration, business growth and employment, skills training) social infrastructure (education, health and community facilities) and green infrastructure (open spaces, recreation and sporting facilities and green public realm) requirements. It provides a framework for developers and key infrastructure providers on the requirements for implementing Shropshire's development strategy, including setting out the need for developer

contributions and providing clarity on what will be addressed via the Community Infrastructure Levy (CIL list).

- 1.11 The Local Investment Plan (LIP) will help the Council and its partners to work together to coordinate various funding streams. The Shropshire LIP is available on the West Housing Market Area Partnership website).
- 1.12 The 18 Place Plans list all of the priorities, needs and aspirations on a place by place basis for each of Shropshire's communities, building on the community's requirements identified in the town and parish plans and local evidence of infrastructure requirements from infrastructure and service providers. As such, they seek to bring together "bottom up" priorities, originating from community aspirations with "top down" schemes and actions, originating from large organisations such as Shropshire Council. They will be used to assist in prioritising which are the most important schemes within a particular place, given limited resources, and will help provide a delivery programme which will create and maintain Wem and its surrounding areas as sustainable communities.

How is this document structured?

- 1.13 As the Place Plan for Wem and its surrounding area, this document identifies and divides the infrastructure and investment requirements for Wem,(any future Community Hubs) its Clusters and Rural Hinterland, into the following themes:
 - Housing and cohesive, sustainable communities
 - Economic investment and opportunity
 - Social and community infrastructure
 - Environment and climate change
 - Transport and accessibility
- 1.14 Each infrastructure requirement has been identified according to whether it is considered to be 'critical', 'priority' or 'key' and colour coded according to whether there are any known barriers to it's delivery.
- 1.15 Infrastructure schemes which have been coloured **red** are known to have important barriers which are preventing their delivery, such as a lack of funding. Infrastructure schemes which have been coloured **amber** are known to have some barriers to delivery such as an incomplete set of funding or no known timescale for delivery. Schemes that are coloured **green** have no known barriers to delivery and therefore have identified partners, funding and timescales for delivery.
- 1.16 Critical infrastructure is that which is fundamental to development, such as electricity, water and road access, without which development can simply not take place. Priority infrastructure is that, which for a given point in time has been identified as a particular priority, in order to meet a specific need or requirement. Key infrastructure reflects the full range of infrastructure and investment needs that are required to create and maintain places as sustainable communities.

How will this document be used to deliver sustainable places in Shropshire?

- 1.17 Through ongoing engagement with the local community, this plan seeks to record and convey the priorities for Wem and its surrounding area to partners who are in a position to invest money and deliver schemes to meet local needs.
- 1.18 The Plan will also be used to inform what contributions towards local infrastructure will be sought from development within Wem and its surrounding area, through the Community Infrastructure Levy and developer contributions, to meet community priorities.
- 1.19 In summary therefore, this Place Plan has the following roles:

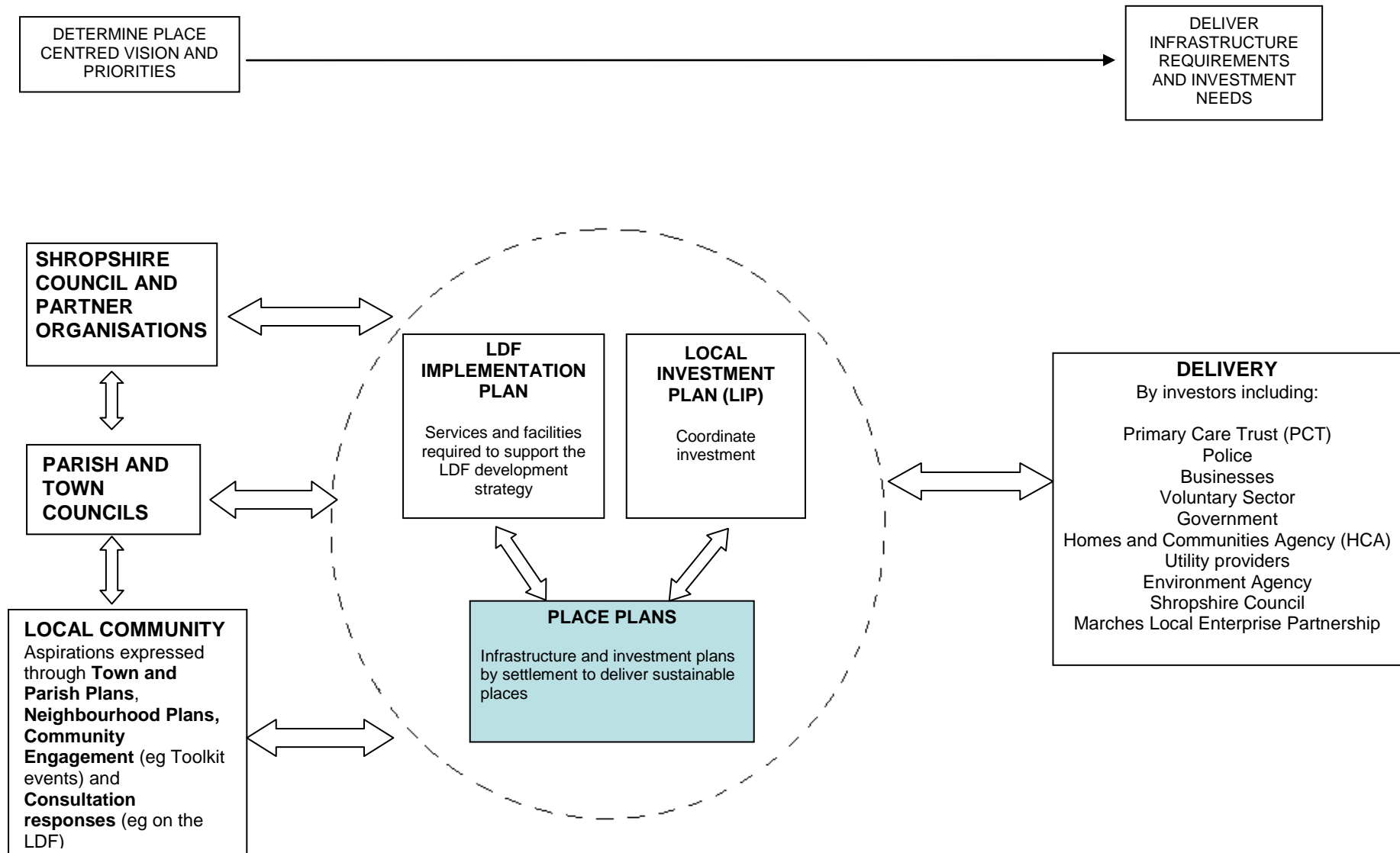
DECISION-MAKING PROCESS

- Provides a mechanism for taking decisions through the appropriate channels

CONTENT

- Provides details of how the vision will be delivered in Wem and its area.
- Records and conveys the agreed shared priorities to partners who are in a position to invest and deliver;
- Identifies priorities for contributions towards local infrastructure from development, through the Community Infrastructure Levy and through other external funding sources.

Figure 1: Delivering sustainable places



2. WEM PLACE PLAN

2.1 VISION FOR WEM

The vision for *Wem* is found in the Core Strategy Policy CS3, and is as follows:

Wem will have development to strengthen its economic role and support and enhance its important community assets and to maintain its role as a sustainable place.

Core Strategy Policy CS3

In addition, the following local vision has been identified for Wem:

Wem will have development to strengthen its economic role as a Market Town, including tourism, to support and enhance its distinctive character, important community assets and to maintain its role as a sustainable place that delivers the best possible quality of life for its residents.

Wem Town Council- Annual Place Plan Review 2012-2013

2.2 WEM PROFILE

A town profile for Wem is provided in Appendix 1. This provides an overview of the social, economic and environmental characteristics of Wem, based on the latest available local evidence.

2.3 COMMUNITY LED PLANNING IN WEM

Community Led Plans

Wem Town Plan (2007)

The following have been identified from the Wem Town Plan as community needs and priorities:

- Recycling
- Streetscene- litter, dog fouling
- Improve and develop play space
- Increase in local public transport services
- Opportunities for walking and cycling
- Drop in health facilities for younger and older people
- Better facilities and access to those with mobility issues
- Improve sport and leisure facilities
- Community buildings eg town halls
- Anti-social behaviour

- Provision of employment land
- Access to information about jobs and training
- Provision of low cost housing
- Road safety- HGV issues, congestion and parking
- Improving the choice and range of shops.

However, this Town Plan is in the process of being refreshed. The Parish Council are also working on a town design statement.

Local Joint Committees

The town of Wem is located within the Wem and Shawbury Local Joint Committee Area. The following needs and priorities have been raised by the local community as part of Local Joint Committee meetings:

Wem and Shawbury Local Joint Committee

- Road safety, speeding, HGVs
- Rural transport, parking
- Housing needs

Other Community Consultations

Local Development Framework Core Strategy- Issues and Options Consultation (January- March 2009)

Wem Town Council representations on the Core Strategy

(Representation reference no CORESTRATEGY002453/00001/002)

- Additional employment land to provide a new good quality business park to grow the local economy
- Affordable housing based on local needs

Local Development Framework Core Strategy- Policy Directions Consultation (August – October 2009)

Wem Town Council representations on the Core Strategy

(Representation reference no CORE STRATEGY002453/00002/004)

- Need for a range of business/industrial units for Wem to allow small businesses to expand.
- A wider retail base
- Heavy traffic in the town centre

Local Development Framework Core Strategy- Final Plan Publication (February- March 2010)

Wem Town Council representations on the Core Strategy

(Representation reference no

CORESTRATEGY/09RSUB/002453/00003/007)

- There is a need for adequate employment land within Wem to sustain employment
- A link road between Aston Road and Shawbury Road.

- More sheltered housing in Wem and affordable housing provision to meet local needs.
- Safeguarding of the green corridor between Wem and Tilley

Local Development Framework Site Allocations and Management of Development DPD (SAMDev) – Issues and Options Consultation (April-June 2010)

Wem Town Council representations on the SAMDev

(Representation reference no SAMDEV DPD/04IOP/002453/00004)

- Link road between Shawbury Road and Aston Road
- Improvements to the road network
- New access into the main car park
- Improvements to the sewage system
- Improvements to the water supply
- Education provision
- Medical provision
- Improvements to broadband provision
- Improvements to open spaces and recreational areas
- Improvements to public transport
- Improvements to allotments

Investing in Shropshire's Future- Local Infrastructure and Investment Workshop with Wem Town Council (20th September 2010)

- Town centre congestion, particularly HGV through traffic
- Congestion at the level crossing
- Additional employment land required
- Improvements to current employment spaces e.g. industrial estate
- Lack of draw for tourists
- School capacity
- Additional affordable and sheltered housing required
- Sewage treatment at capacity

Wem Community Toolkit Event – 3rd February 2011

The following activities, facilities, services and infrastructure were considered to be the most important community assets by the event attendees:

Activities:

- Senior citizens groups and clubs
- Arts and heritage clubs
- Youth groups and clubs
- Children and family activities

Facilities:

- Parking
- Café/pub/restaurant
- Community centre/village hall
- School

Services:

- Shops

- Police/ emergency services
- Healthcare

Infrastructure:

- Job opportunities
- Regular public transport
- Road improvements

The following points were raised by members of the community as ideas for projects to revitalise the town:

Transport:

- Reinstate bypass plans and implement
- Curb very large lorries/tractors etc using Wem High Street

The following comments were also made by participants:

- Car parking and issue of paying for it and communication – lack of understanding, impact on the town, impact on local churches

Full information and feedback from the Wem Toolkit event is available at:
(<http://www.shropshire.gov.uk/factsfigures.nsf/open/C6BE79E370240015802577760045C7C5>)

2. 4 INFRASTRUCTURE AND INVESTMENT DELIVERY FRAMEWORK FOR WEM

(This covers Wem settlement but excludes the rest of the parish, which is covered by the Rural Hinterland section, see page 100)

Infrastructure or investment requirements and opportunities	Critical/ Priority or Key	Lead delivery partner	Other partners	Cost	Funding secured	Funding gap	Timescale for delivery	Potential funding sources	Notes
Housing and cohesive, sustainable communities									
Developer contribution towards affordable housing	KEY	Shropshire Council (Development Services- Housing Enabling and Implementation)		N/A	£22,950	N/A	Payable by Owner within 60 days of commencement.	Developer contributions	Developer contributions in relation to land at Mill Bank, Mill Street, Wem, SY4 5EX. To be used to facilitate the delivery of additional affordable and/or supported housing elsewhere in the Council's administrative area. Development has not commenced- Awaiting payment from developers.
Developer contribution towards affordable housing	KEY	Shropshire Council (Development Services- Housing Enabling and Implementation)		N/A	£46,800	N/A		Developer contributions	Developer contributions in relation to land at 17 High Street, Clive, Shrewsbury. To be used for provision of off-site Affordable Housing.
Developer	KEY	Shropshire	RSLs	N/A	£82,770	N/A	No time limit	Developer	Developer contributions

Infrastructure or investment requirements and opportunities	Critical/ Priority or Key	Lead delivery partner	Other partners	Cost	Funding secured	Funding gap	Timescale for delivery	Potential funding sources	Notes
contributions for the provision of affordable housing		Council (Development Services- Housing Enabling and Implementation)					on spend period	contributions	in relation to Fismes Way. Potential project with RSL. To be used as contribution towards provision of affordable housing to meet local needs in district of North Shropshire.
Affordable housing provision	PRIORITY	Shropshire Council (Development Services- Strategy and Development)	Developers Registered Providers Homes & Communities Agency Landowners Town & Parish Councils	N/A	N/A	N/A	2010/11 to 2013/14	Homes & Communities Agency Grant Shropshire Council capital programme Registered Providers Developer cross-subsidy Developer cash contributions	33% of all new housing in Shropshire will be affordable housing, delivered through <ul style="list-style-type: none"> • appropriate % of open market housing linked to developments • 100% affordable “exceptions sites” • better use of empty properties Harris Coft – recent development of 13 affordable units
Housing for vulnerable people	KEY	Shropshire Council (Community Services-	Registered Providers, Specialist Care	Scheme dependent			2011-2015	Homes and Communities Agency, Shropshire	Includes provision to support sustainable independent living for vulnerable people

Infrastructure or investment requirements and opportunities	Critical/ Priority or Key	Lead delivery partner	Other partners	Cost	Funding secured	Funding gap	Timescale for delivery	Potential funding sources	Notes
		Housing Services)	Providers, Voluntary Sector, local communities, schools and colleges, West Mercia Police					Council capital programme	<p>including:</p> <ul style="list-style-type: none"> • sustainable living at home • access to work • education and training and community inclusion <p>Integrated preventative service provision with a Pathway approach to access and retain accommodation. Target groups include: older people, young people, people with learning disabilities, mental health needs, people at risk of homelessness, domestic violence, gypsies and travellers, offenders, substance misusers.</p> <p>The Parish Council have identified a need for a facility for homelessness inquiries.</p>
Improving and	KEY	Shropshire	Keep	Scheme	Funding		2011-2015	Private sector	Includes:

Infrastructure or investment requirements and opportunities	Critical/ Priority or Key	Lead delivery partner	Other partners	Cost	Funding secured	Funding gap	Timescale for delivery	Potential funding sources	Notes
adapting existing housing- includes regeneration		Council, Registered Providers, Home owners (Community Services- Housing Services)	Shropshire Warm, Developers, Shropshire Home Improvement Agency Sure Start Childrens' Centres, Schools	dependent	secured for social housing- Tenant wide: £2.5 million available for social housing (per year). Also a further £3.1million over 4 years starting April 2011 from the HCA for decent homes			funding	<ul style="list-style-type: none"> energy efficiency to reduce carbon emissions and tackle fuel poverty; upgrading social housing to meet the Decent Homes standard; adaptations to meet changing needs, including disabled facilities grants; <p>The Council's Extended Schools Team has identified opportunities to inform and encourage parents to understand what they can do to improve energy efficiency of homes and how this can benefit them, through schools (Eco-Schools involvement) and children's centre drop-ins and activities.(Developing</p>

Infrastructure or investment requirements and opportunities	Critical/ Priority or Key	Lead delivery partner	Other partners	Cost	Funding secured	Funding gap	Timescale for delivery	Potential funding sources	Notes
									Environmentally Sustainable Sure Start Children's centres is being piloted in NW at Woodside, Oswestry rolling out to other centres later)
Aids and adaptations for social housing tenants	KEY	Shropshire Council (Community Services-Housing Services)		Tenant Wide: £225,000 (per year) for Social Housing	Tenant Wide: £225,000 (per year) for Social Housing	None	Ongoing	Shropshire Council	The £225,000 is to be used across Shropshire Council tenants homes for completing adaptations to tenant's properties. For example the money will be spent on Level Access Showers, Hand rails and stair lifts etc. The aim of completing adaptations is to improve the quality of life of our tenants and to give them the opportunity to stay in their homes.

Infrastructure or investment requirements and opportunities	Critical/ Priority or Key	Lead delivery partner	Other partners	Cost	Funding secured	Funding gap	Timescale for delivery	Potential funding sources	Notes
Bringing empty homes back into use- includes affordable housing provision	KEY	Shropshire Council, Registered Providers, Property Owners (Community Services- Housing Services)	Local communities, voluntary sector agencies, schools and colleges	Scheme dependent			2011-2015	Empty Homes: New Homes Bonus	Funding to be put in place- scheme costs vary and are generally a package of funding . Seeking Homes and Communities Agency funding for 12 units countywide over 4 years @ £25,000 per unit= £300,000. Limited local authority funding available during 2011- 2012
Extra Care Housing	KEY	Shropshire Council (Community Services- Housing Services)	Registered Providers, Care Providers, Voluntary Sector, Local Communities	Scheme dependent			2012-2015		Locations to be determined. To include Market Town and Rural Area provision. Funding proposals being developed. Extra Care Housing provision targeted towards older people, especially frail older people, with planned provision for respite facilities and housing for people with disabilities. To provide sheltered

Infrastructure or investment requirements and opportunities	Critical/ Priority or Key	Lead delivery partner	Other partners	Cost	Funding secured	Funding gap	Timescale for delivery	Potential funding sources	Notes
									housing with community facilities.
Maintain access Mortgage Rescue Scheme	KEY	Shropshire Council (Community Services-Housing Services)	Orbit Housing Association, Citizens Advice Service, Credit Union, Registered Providers	Approx £14 million available to west midlands region.	Amount available to Shropshire, to be confirmed	c£13,000 per property	March 2011-Spring 2013	Homes and Communities Agency, DCLG Homeless and Prevention Grant	<p>Government sponsored program that helps the most vulnerable members of society by providing direct financial help for eligible home owners so they can stay in their home.</p> <p>During 2009-11, the average purchase per property was £98,000. 11 properties were purchased at a total cost of £1,073,475. Reduction in Homes and Communities Agency funding will reduce the average funding available per property to £85,000. Incidence of mortgage difficulty is steadily increasing (40% increase over previous 12 months). Eligibility criteria for Mortgage Rescue Scheme has</p>

Infrastructure or investment requirements and opportunities	Critical/ Priority or Key	Lead delivery partner	Other partners	Cost	Funding secured	Funding gap	Timescale for delivery	Potential funding sources	Notes
									tightened, reducing the number of applicants able to access the scheme. Additional funding is therefore required to address the gap between the funding available and the amount required (c£13,000 per property) in order to maintain access to the scheme.
Economic investment and opportunity									
Market Towns Revitalisation Programme – Market Towns Capital Initiative Fund PHASE 1 of the MTRP is fully committed.	PRIORITY	Shropshire Council (Development Services-Economic Development)	Local businesses, residents, investors	£0.5 million allocated across 11 designated market towns and key settlements	£0.5 million	None	2010-2015	Shropshire Council capital programme. Match funding from other sources will be explored including LJC funding.	MTRP Phase 1 has funded the Town Hall Community Cinema. The Town Council wish to see a proportion of any further MTRP funding ring-fenced for projects in Wem.
Tourist information point	KEY	Wem Economic Forum	Shropshire Council Wem Parish Council						The Parish Council have identified a need for a tourist information point in the town.
High quality	KEY	Shropshire	Developers,						The Parish Council has

Infrastructure or investment requirements and opportunities	Critical/ Priority or Key	Lead delivery partner	Other partners	Cost	Funding secured	Funding gap	Timescale for delivery	Potential funding sources	Notes
employment land		Council (Economic Development)	Wem Town Council						identified a need for additional high quality employment land that widens the economic base by providing hi tech opportunities for growth.
Identify opportunities for heritage led regeneration around Park House, garage area and car park area.	KEY	Shropshire Council (Development Services - Economic Development, Historic Environment)						Developer contributions	Historic Environment have identified opportunities for regeneration at Park House and surrounding area.
Facilitation of ICT /broadband technologies	KEY	Shropshire Council A private sector delivery partner will be procured using the BDUK framework	BDUK Town and Parish Councils		£16.4 million across all of Shropshire (£8.2 Shropshire Council and £8.2 million from BDUK)		2015		The Connecting Shropshire aims to provide a minimum of 2 Mbps to all of Shropshire and as much superfast broadband as possible. The project will deliver to those communities that are not going to get either basic broadband or superfast broadband under the private sector

Infrastructure or investment requirements and opportunities	Critical/ Priority or Key	Lead delivery partner	Other partners	Cost	Funding secured	Funding gap	Timescale for delivery	Potential funding sources	Notes
									rollout. Wem Town Hall has potential to be used as a broadplace
Shop Front Redecoration Scheme	KEY	Shropshire Council (Development Services - Historic Environment)	Wem Town Council				ongoing	Developer contributions	Secure funding for basic shop front repairs and redecoration to improve the appearance of the streetscene in accordance with the Wem Design Statement
Social and community infrastructure									
Developer contribution towards maintenance of open space	KEY	Shropshire Council (Community and Leisure Services)		N/A	£65,000	N/A	Due upon transfer of POS or play areas to either Shropshire Council or Wem Town Council	Developer contributions	Developer contributions in relation to Land off Whitchurch Road, Wem. POS/Play area Maintenance Contribution. Development has not commenced- Awaiting payment from developers.

Infrastructure or investment requirements and opportunities	Critical/ Priority or Key	Lead delivery partner	Other partners	Cost	Funding secured	Funding gap	Timescale for delivery	Potential funding sources	Notes
Developer contribution towards play equipment	KEY	Shropshire Council (Community and Leisure Services)		N/A	£20,000	N/A	Payable prior to occupation of 21st dwelling.	Developer contributions	Developer contributions in relation to land off Aston Street, Wem.. Payment overdue- Development has commenced- Awaiting payment from developers.
Provision of replacement GP surgery	KEY	PCT			Ongoing- to be determined through SAMDev		2012-2015	PCT funding, developer contributions	Draft proposal being submitted by practice to PCT for extension of premises to meet capacity issues. Practice also submitting proposal to increase capacity of Prees branch surgery by renovation of alternative premises. Potential to negotiate land provision of appropriate new development sites. Developer funding direct/PCT and other funding sources assumed.
Review of primary	PRIORITY	Shropshire	Developers	£750,000	None	£750,000	Dependent	Developer	An assessment of the

Infrastructure or investment requirements and opportunities	Critical/ Priority or Key	Lead delivery partner	Other partners	Cost	Funding secured	Funding gap	Timescale for delivery	Potential funding sources	Notes
school places to ensure sufficient provision		Council (Learning and Skills)					upon developers' timescales	contributions, LA Capital Programme	effect on school places locally has been made based on proposed levels of development with delivery spread evenly over the remaining Plan period. This indicates that consideration will need to be given to the provision of extra primary school places during this time span. This will be fully determined following SAMDev adoption. Although the level of development for the plan period will be determined through SAMDev, it should be noted that for any sites that are allocated for 700+ dwellings different principles for developer contributions will apply.
Review of primary school facilities to	KEY	Shropshire Council	Developers Children's	Dependent upon extent	None	To be determined	Dependent upon	Developer contributions,	To be fully determined by SAMDev, based on

Infrastructure or investment requirements and opportunities	Critical/ Priority or Key	Lead delivery partner	Other partners	Cost	Funding secured	Funding gap	Timescale for delivery	Potential funding sources	Notes
meet local needs		(Learning and Skills/Family Care and Wellbeing)	Centres	and location of development		through SAMDev	developers' timescales	LA Capital Programme	need. The Council's Extended Schools Team has identified the need to consider integrated Children's Centre provision on site from outset – ensuring common goals and language and supporting smooth transition. Consideration should also be to be given to provision of extended schools activities and the need for transport to support access to them. i.e. before and after school childcare, after school activity clubs sport and arts activities, links with parenting and family activities and support for children with additional needs to ensure their inclusion in available provision. Community access to available provision would also

Infrastructure or investment requirements and opportunities	Critical/ Priority or Key	Lead delivery partner	Other partners	Cost	Funding secured	Funding gap	Timescale for delivery	Potential funding sources	Notes
									maximise use of resources.
Review of secondary school places to ensure sufficient provision.	PRIORITY	Shropshire Council (Learning and Skills)	Developers	Dependent upon extent and location of development	None	To be determined through SAMDev	Dependent upon developer's timescales	Developer contributions, LA Capital Programme	An assessment of the effect on school places locally has been made based on proposed levels of development with delivery spread evenly over the remaining Plan period. Whilst this indicates that additional pressure will be placed on the school's current capacity, it is anticipated that the additional in-area children will displace a consistent out-of-area trend on the school roll. Thus, it is considered that longer-term additional places will not be required, however, shorter-term provision may need to be made whilst out-of-area children make their way through the school. This situation will be

Infrastructure or investment requirements and opportunities	Critical/ Priority or Key	Lead delivery partner	Other partners	Cost	Funding secured	Funding gap	Timescale for delivery	Potential funding sources	Notes
									fully determined following SAMDev adoption.
Review of secondary school facilities to meet local needs	KEY	Shropshire Council (Learning and Skills/Family Care and Wellbeing)	Developers Children's Centres	Dependent upon extent and location of development	None	To be determined through SAMDev	Dependent upon developer's timescales	Developer contributions, LA Capital Programme	To be fully determined by SAMDev, based on need. The Council's Extended Schools Team has identified the need to consider provision of extended schools activities and the need for transport to support access to them. A safe place to be for secondary aged pupils. (particularly Yr 7s in support of transition to secondary school), after school activity clubs sport and arts activities, links with parenting and family activities and support for children with additional needs to ensure their inclusion in available provision. Community access to

Infrastructure or investment requirements and opportunities	Critical/ Priority or Key	Lead delivery partner	Other partners	Cost	Funding secured	Funding gap	Timescale for delivery	Potential funding sources	Notes
									available provision would also maximise use of resources
Wem Town Hall	KEY	Shropshire Council (Arts and Heritage)					ongoing		Work is required to ensure the long term financial stability of the Town Hall
Morgan library building	KEY	Wem Town Council	Shropshire Council				ongoing		The Town Council has identified a desire to use the Morgan library for community use, should it become available in the future.
Town Museum	KEY	Wem Civic Society	Shropshire Council						The Civic Society has identified a need for a Town Museum. A virtual museum is created but there is also a need for a physical one with a presence somewhere within the town centre.
Provision of parks and gardens	KEY	Shropshire Council (Community Services- Culture and Leisure)					ongoing	Developer contributions	The PPG17 Study has identified a current under provision of parks and gardens.

Infrastructure or investment requirements and opportunities	Critical/ Priority or Key	Lead delivery partner	Other partners	Cost	Funding secured	Funding gap	Timescale for delivery	Potential funding sources	Notes
		Wem Town Council							
Provision of amenity greenspace	PRIORITY	Shropshire Council (Community Services- Culture and Leisure) Wem Town Council		c£4.48 per m ² and maintenance costs of £0.55 per m ² x 20 years.			ongoing	Developer contributions	The PPG17 Study has identified a current under provision of amenity greenspace.
Provision of outdoor sports facilities	KEY	Shropshire Council To facilitate implementation of the Playing Pitch Strategy (PPS) through the PPS Group, as set out in the PPS Action Plan 2010, in partnership as appropriate. Wem Town Council		Pitch provision = c£42.60 per m ² plus c£1.31 per m ² x 20 for ongoing maintenance. Courts = c£89.75 per m ² plus c£2.75 per m ² x 20 for ongoing maintenance. Greens = £40.96 per m ² plus			ongoing	Developer contributions	The Playing Pitch Strategy has identified that Wem should have a minimum of 1 multi-pitch site providing for competition and training, with good quality on-site changing and toilet provision, appropriate for, and accessible to, all user types. The Playing Pitch Strategy has identified that the Wem Sports and Social Club is a multi pitch site with community use.

Infrastructure or investment requirements and opportunities	Critical/ Priority or Key	Lead delivery partner	Other partners	Cost	Funding secured	Funding gap	Timescale for delivery	Potential funding sources	Notes
				£4.02 per m ² x 20 for ongoing maintenance costs.					Improvements to quality and accessibility should be made where necessary. Wem Recreation site single pitch site where improvements to quality are considered necessary eg changing rooms
Provision of indoor sports	KEY	Shropshire Council	Sport England						The Indoor Facilities Strategy has identified the need for indoor cricket nets at Thomas Adams School.
Provision of recreational facilities for children	PRIORITY	Shropshire Council (Community Services- Culture and Leisure) Wem Town Council		c£136.54 per m ² for a Local Area for Play plus c£4.37 x 20 for ongoing maintenance. c£143.55 per m ² for Local Equipped Area for Play plus c£7.65 x 20 for			ongoing	Developer contributions	The PPG17 Study has identified a current under provision in the supply of facilities for children

Infrastructure or investment requirements and opportunities	Critical/ Priority or Key	Lead delivery partner	Other partners	Cost	Funding secured	Funding gap	Timescale for delivery	Potential funding sources	Notes
				ongoing maintenance					
Provision of recreational facilities for young people	PRIORITY	Shropshire Council (Community Services- Culture and Leisure) Wem Town Council		c£136.54 per m ² for a Local Area for Play plus c£4.37 x 20 for ongoing maintenance. c£143.55 per m ² for Local Equipped Area for Play plus c£7.65 x 20 for ongoing maintenance			ongoing	Developer contributions	The PPG17 Study has identified a current under provision in the supply of facilities for young people The Parish Council has identified an aspiration to find a new site for the Youth Centre, possibly on the former timberyard site as part of an affordable housing development. The parish Council has identified the need for a new basketball hoop to facilitate team matches.
Provision of allotments	KEY	Shropshire Council (Community Services- Culture and Leisure)					ongoing	Developer contributions	The PPG17 Study has identified a current under provision in the supply of allotments

Infrastructure or investment requirements and opportunities	Critical/ Priority or Key	Lead delivery partner	Other partners	Cost	Funding secured	Funding gap	Timescale for delivery	Potential funding sources	Notes
		Wem Town Council							
Improve seating on River Roden footpath	KEY	Wem Town Council							The Wem Green Network Study has identified that seating along the River Roden footpath is in need of replacement or improvement.
Youth Club improvements	KEY	Shropshire Council (Community Services- Culture and Leisure)	Schools & Shropshire Youth					Grant funding	Aspiration to turn youth club into more of a community centre for the town and to extend and improve the building. Existing building is currently in a poor state, with no double glazing, central heating or insulation. The aim is for the building to be affordable for small community groups.
Wem Judo Club	Key	Wem Judo Club	Shropshire Council (Community Services-						They currently operate 2 nights per week at Thomas Adams but require alternative accommodation to

Infrastructure or investment requirements and opportunities	Critical/ Priority or Key	Lead delivery partner	Other partners	Cost	Funding secured	Funding gap	Timescale for delivery	Potential funding sources	Notes
			Culture and Leisure) Wem Youth Club						expand. There could be a link with Wem Youth club who also have a capacity issue, which could be improved by a larger community building.
Environment and climate change									
Upgrade to Aston Road Sewage Treatment Works	CRITICAL	Severn Trent Water	Environment Agency	N/A	Yes	N/A	2010-2015	Severn Trent Water's business plan (AMP)	The Shropshire Water Cycle Study identifies that there is no current hydraulic capacity at the Wem Waste Water Treatment Works. The treatment works is located close to a residential area but there is land available should additional treatment capacity be required. The Water Cycle Study also identifies that a new discharge consent will be required at the Wastewater Treatment Works in order to ensure there is no deterioration of water quality under

Infrastructure or investment requirements and opportunities	Critical/ Priority or Key	Lead delivery partner	Other partners	Cost	Funding secured	Funding gap	Timescale for delivery	Potential funding sources	Notes
									the Water Framework Directive. The study has shown that this requirement for a new discharge consent may be beyond conventional technology, but that this is not as a result growth.
Upgrades to sewerage infrastructure	CRITICAL	Severn Trent Water		N/A	None	Yes	Ongoing The sewer network is currently being reviewed by Severn Trent Water and will continue to be reviewed every 6 months as part of the water company's sewer network plans to allow issues	Options are currently being appraised by Severn Trent Water as part of their capital investment programme.	Determined through SAMDev. Developer funded direct/Severn Trent Water funding assumed Wem WWTW is located to the east of the railway and generally there is good hydraulic performance in the sewerage catchment. The potential impact on sewerage infrastructure is therefore considered to be low. However, there are known internal flooding problems to the south of the River Roden.

Infrastructure or investment requirements and opportunities	Critical/ Priority or Key	Lead delivery partner	Other partners	Cost	Funding secured	Funding gap	Timescale for delivery	Potential funding sources	Notes
							to be addressed in a timely manner.		
Assessment of local flood risk	PRIORITY	Shropshire Council (Development Services- Highways and Transportation)	Severn Trent Water, Environment Agency	£80,000	None	£80,000	2012 - 2015	Shropshire Council capital programme	Assessment of surface water flood risk in Wem, development of hazard maps and an action plan for addressing issues.
Provision of natural and semi natural open space	PRIORITY	Shropshire Council (Community Services- Culture and Leisure)	Wem Town Council	c£274 per dwelling x 20 years maintenance			Ongoing	Developer contributions	<p>The PPG17 Study has identified a current under provision of natural and semi natural open space.</p> <p>The Wem Green Network Study has identified that River Roden should form an important focus area of greenspace.</p> <p>The Wem Green Network Study has identified value in undertaking a River Strategy Study in order to maximise the benefit</p>

Infrastructure or investment requirements and opportunities	Critical/ Priority or Key	Lead delivery partner	Other partners	Cost	Funding secured	Funding gap	Timescale for delivery	Potential funding sources	Notes
									<p>of the River Roden and its tributary streams for the public and wildlife.</p> <p>The green network within Wem should be maintained and enhanced by including on-site natural and semi-natural greenspace provision within developments. Similar off-site provision will also be allowed, where appropriate, to meet the targets set out in Natural England's Accessible Natural Green Space Standard (ANGSt) and consolidate Shropshire's Environmental Network surrounding Wem.</p>
Rail corridor	KEY	Shropshire Council (Community Services- Culture and Leisure,	Railtrack						The Wem Green Network Study has recommended the creation of new wildlife habitat and landscape features along the rail

Infrastructure or investment requirements and opportunities	Critical/ Priority or Key	Lead delivery partner	Other partners	Cost	Funding secured	Funding gap	Timescale for delivery	Potential funding sources	Notes
		Development Services – Natural Environment)							corridor.
Recreation areas, community spaces and grass verges	KEY	Shropshire Council (Community Services- Culture and Leisure, Development Services – Natural Environment)							The Wem Green Network Study has recommended improvements to biodiversity and enhancement of recreation areas and public spaces.
Improvements to the cemetery	KEY	Shropshire Council (Community Services- Culture and Leisure, Development Services – Natural Environment)							The Wem Green Network Study has identified that improvements need to be made to the cemetery. It recommends the production of a management plan for the cemetery to create a welcoming space for people whilst retaining valuable areas for wildlife.

Infrastructure or investment requirements and opportunities	Critical/ Priority or Key	Lead delivery partner	Other partners	Cost	Funding secured	Funding gap	Timescale for delivery	Potential funding sources	Notes
Identify key Water Vole habitat corridors enhancement opportunities	KEY	Whitchurch Community Water Vole Group, Shropshire Council (Development Services – Natural Environment)	Shropshire Mammal Group	£7,500			Ongoing	Shropshire Ecological Data Network	This area is notable for its population of water voles. It is therefore important that the network of watercourses and associated green space is maintained and enhanced as part of the Environmental Network of the town.
Parish habitat mapping	KEY	Shropshire Council (Development Services – Natural Environment)		£8,400 per parish			2011-2013	LEADER, Regional Development Fund	Facilitate parish habitat mapping and biodiversity infrastructure and enhancement projects through the 'Your Natural Heritage' project. This project is tied to the Cheshire Northern Marches LEADER Project Area.
Urban Landscape Character Assessment	KEY	Shropshire Council (Development Services – Historic Environment)		£2,700			aspirational	Developer contributions	Undertake an Urban Landscape Character Assessment of Wem
Survey of important views in and out of	KEY	Shropshire Council					Ongoing.		Fundamental/important town views in and out to

Infrastructure or investment requirements and opportunities	Critical/ Priority or Key	Lead delivery partner	Other partners	Cost	Funding secured	Funding gap	Timescale for delivery	Potential funding sources	Notes
Wem.		(Development Services - Historic Environment)							<p>be surveyed. Introduce accessible public areas such as walkways, promenades, seating facilities.</p> <p>The Parish Council has identified that the area by the River Roden should be looked at in particular</p> <p>A Town Design Statement is currently being drawn up by a working group.</p>
Production of list of Locally Important Buildings.	KEY	Shropshire Council (Development Services - Historic Environment)	Wem Town Council. Civic Society. English Heritage				ongoing		Local Listing Initiatives supported by English Heritage and PPS5. undertake public consultation exercise to create list of 'Buildings of Local Architectural or Historic Interest' (non-statutory list) List would identify local heritage assets that are valued by local community but not statutorily listed that

Infrastructure or investment requirements and opportunities	Critical/ Priority or Key	Lead delivery partner	Other partners	Cost	Funding secured	Funding gap	Timescale for delivery	Potential funding sources	Notes
									would be afforded some degree of protection in the planning system. Involves survey work, preparation of report to Cabinet, publication of list, promotion of list
Heritage at Risk register	KEY	Shropshire Council (Development Services - Historic Environment)	English Heritage				ongoing	Developer contributions	EH 2010 Heritage at Risk register includes Park House Wem Engage local groups to identify future Buildings at Risk.
Shropshire Community Archaeological Fund	KEY								Opportunity for the development of a fund in support of targeted community-led archaeology projects.
Streetscene improvements	KEY	Shropshire Council (Development Services - Historic Environment)	Wem Town Council				ongoing	Developer contributions Shropshire Council	Survey to establish where modern railings should be replaced with more traditional design, plus condition survey of existing historic railings and program of repair where necessary. Identify opportunities to improve visual amenity of town centre through

Infrastructure or investment requirements and opportunities	Critical/ Priority or Key	Lead delivery partner	Other partners	Cost	Funding secured	Funding gap	Timescale for delivery	Potential funding sources	Notes
									landscaping. Survey all streets for existing signage and replace, repair or introduce where necessary.
Community Tree Scheme	KEY	Shropshire Council Development Services – Natural Environment)	Developers, Shropshire Council (Highways)	£2640 per ha planted with tree whips. £260 per new street tree.	£5000 to be shared throughout the council and provision of 10,000 trees		Ongoing	Shropshire Council Highways, Maelor Forest Nurseries, Whitchurch	Run an extensive Community Tree Scheme to provide opportunities to enhance the natural environment of the area. Costs include planting, stakes, tree guards and watering to establish trees over first 3 years.
Transport and accessibility									
Developer contribution towards Highways	KEY	Shropshire Council (Development Services- Highways and Transportation)		N/A	£10,000	N/A	Due before occupation of 20th dwelling or within 2 years of imp of planning consent (whichever 1st).	Developer contributions	Developer contributions in relation to Land off Whitchurch Road, Wem. Development has not commenced- Awaiting payment from developers.

Infrastructure or investment requirements and opportunities	Critical/ Priority or Key	Lead delivery partner	Other partners	Cost	Funding secured	Funding gap	Timescale for delivery	Potential funding sources	Notes
Developer contribution towards Highways	KEY	Shropshire Council (Development Services- Highways and Transportation)		N/A	£5,000	N/A	Payable by Landowner on commencement of the development	Developer contributions	Developer contributions in relation to land at Lower Road Harmer Hill Shrewsbury SY4 3QX. To be used for the Highways Works - installation of an interactive road sign on Higher Rd, Harmer Hill, Shrewsbury. Works on site have commenced. Development commenced- Awaiting payment from developers.
Bus Interchange and Information Point improvements	KEY	Shropshire Council (Development Services- Highways and Transportation)			None		aspirational	Developer contributions, Local Transport Plan	
Develop and improve the cycle and pedestrian network	PRIORITY	Shropshire Council (Development Services- Highways and Transportation)		£1.5 million	None	£1.5 million	2011-2026	Local Transport Plan and Developer contributions	Fully developer funded. To include: <ul style="list-style-type: none"> Cycle route to employment land on east side, including a new

Infrastructure or investment requirements and opportunities	Critical/ Priority or Key	Lead delivery partner	Other partners	Cost	Funding secured	Funding gap	Timescale for delivery	Potential funding sources	Notes
									foot/cycle bridge over the railway <ul style="list-style-type: none"> • Pedestrian crossing on New Street near Pym's Road, to improve access to the Secondary School Other projects to be identified. The Wem Green Network Study has recommended the investigation into the creation of a walking/ cycle route from Lower Lacon Caravan Site.
Junction capacity and safety improvements where necessary to facilitate development	CRITICAL	Shropshire Council (Development Services- Highways and Transportation)			None	Ongoing	Ongoing		Fully developer funded
Local highway improvements, traffic management, parking provision and	PRIORITY	Shropshire Council (Development Services-	Wem Town Council	c£500,000	None	c£500,000	2011-2026	Local Transport Plan and Developer contributions	To include: <ul style="list-style-type: none"> • Traffic signals and pedestrian crossing at Mill

Infrastructure or investment requirements and opportunities	Critical/ Priority or Key	Lead delivery partner	Other partners	Cost	Funding secured	Funding gap	Timescale for delivery	Potential funding sources	Notes
speed and safety management		Highways and Transportation)							<p>Street/Darwell Lane junction.</p> <ul style="list-style-type: none"> • Possible new link road from Shawbury Road to Aston Road, Wem (the need for this road needs to be reviewed) • Improvements to Ellesmere road close to its junction with Lowe Hill Road. • Other projects to be identified. <p>The Town Council has identified a need for out of town lorry parking and for the provision for bus parking.</p>
Car and cycle parking facilities for new developments	CRITICAL	Shropshire Council (Development Services- Highways and Transportation)			None	Ongoing	Ongoing		

Infrastructure or investment requirements and opportunities	Critical/ Priority or Key	Lead delivery partner	Other partners	Cost	Funding secured	Funding gap	Timescale for delivery	Potential funding sources	Notes
Cycle and pedestrian facilities – on site, adjacent to or forming strategic links to retail or employment or large residential developments (50+ dwellings)	CRITICAL	Shropshire Council (Development Services- Highways and Transportation)			None	Ongoing	Ongoing		Fully developer funded
Bus infrastructure (e.g. stops and shelters, bus gates) where necessary to serve new development	CRITICAL	Shropshire Council (Development Services- Highways and Transportation)			None	Ongoing	Ongoing		Fully developer funded
Improved bus infrastructure and services	PRIORITY	Shropshire Council (Development Services- Highways and Transportation)		c£500,000	None	c£500,000	2011 - 2016		
Subsidy for bus service improvements to improve service to development sites – retail or employment	CRITICAL	Shropshire Council (Development Services- Highways and Transportation)		c£120,000/ yr for each additional bus	None	c£120,000/ yr for each additional bus	Ongoing		Fully developer funded

Infrastructure or investment requirements and opportunities	Critical/ Priority or Key	Lead delivery partner	Other partners	Cost	Funding secured	Funding gap	Timescale for delivery	Potential funding sources	Notes
or large residential developments (50+ dwellings)									
Improvements of rail services from Shrewsbury to Manchester, including additional stops at Wem and Whitchurch	KEY	Arriva Trains Wales					aspirational		At peak times, additional stops are made at Wem and Whitchurch by the express service to augment the stopping service, but this still leaves large gaps when passengers are required to travel from the intermediate stations. The major deficiency in the service is a return commuting service from Shrewsbury in the evening between the existing 16:26 and 18:26 departures.
Provision of hourly rail service to Wem	KEY	Arriva Trains Wales	Wem Town Council				aspirational		Wem Town Council has identified a need for aspiration for an hourly rail service to Wem.
Improvements to railway station connectivity	KEY	Shropshire Council	Wem Town Council						Improve integration and connectivity of the Railway Station to the rest of the town centre

Infrastructure or investment requirements and opportunities	Critical/ Priority or Key	Lead delivery partner	Other partners	Cost	Funding secured	Funding gap	Timescale for delivery	Potential funding sources	Notes
									and beyond, including increased wayfinding signs.
Various rights of way improvements to create new circular walks - removal of stiles and replacement of gates and enhanced directional signage to ensure easier access for all and to support 'Active Market Town' and sustainable transport initiatives	KEY	Shropshire Council (Community Services- Culture and Leisure)		£4,180.00	None	£4,180.00	2011-2026	Developer contributions/L TP funding	Replacing 10 existing stiles with gates for easier access improvements to the Rights of Way network and providing 9 new directional signposts Creation and enhancement of the Shropshire Way. The Wem Green Network Study has recommended creation of circular walks from the town and an extension of a footpath along the River Roden. Promotion of easier access routes and 'health walks' with Walking for Health schemes. Expression of Interest submitted to LEADER.

Infrastructure or investment requirements and opportunities	Critical/ Priority or Key	Lead delivery partner	Other partners	Cost	Funding secured	Funding gap	Timescale for delivery	Potential funding sources	Notes
									<p>The Wem Green Network Study has identified that footpaths near to the town centre need improving. This could include improved signage, dog stiles, stile improvements and repair. Install kissing gates where the need is identified and agreement can be gained from landowners</p> <p>The Wem Green Network Study has recommended the investigation into the existence/ creation of a footpath from Saulton Road north to Upper Lacon Farm.</p> <p>The Council's Extended Schools Team has identified the need to tie in with 'Healthy Living' work in schools, preschool settings and</p>

Infrastructure or investment requirements and opportunities	Critical/ Priority or Key	Lead delivery partner	Other partners	Cost	Funding secured	Funding gap	Timescale for delivery	Potential funding sources	Notes
									youth organisations. There is an opportunity for young people and families to participate in planning the design of new routes.
Installation of historic finger posts, waymarkers, milestones, mileposts and street signs.	KEY	Shropshire Council (Development Services - Historic Environment)					ongoing	Developer contributions	Survey of existing conditions and research into lost features. Repair or reinstate where necessary
Improvement of car parks	KEY	Shropshire Council (Development Services - Historic Environment)					ongoing	Developer contributions	Identify opportunities to improve the visual amenity of car parks in the historic town centre. Increase provision of wayfinding signs and landscaping.

3. COMMUNITY HUBS PLACE PLAN FOR THE WEM AREA

3.1 VISION FOR COMMUNITY HUBS

The vision for *Community Hubs* is found in the Core Strategy Policy CS4, and is as follows:

Community Hubs will have development that helps to rebalance rural communities by providing facilities, economic development or housing for local needs that is of a scale appropriate to the settlement.
Core Strategy Policy CS4

Within the Wem area, the following settlement has been put forward by the local community (via the parish council) as Community Hubs:

- Shawbury

3.2 PROFILE OF COMMUNITY HUBS IN THE WEM AREA

3.3 COMMUNITY LED PLANNING IN COMMUNITY HUBS IN THE WEM AREA

Community Led Plans

Shawbury Parish Plan (2010)

The following have been taken from the Shawbury Parish Plan as identified community needs and priorities:

- Development of the Glebe area beyond the playing field
- Control of speeding traffic
- Traffic and Transportation issues
- Community events
- Improved facilities for young people including youth clubs
- Pedestrian safety including improved new footpaths
- Maintenance and improvement of streetlights
- Development of a fitness trail
- Highways maintenance
- Improved access for disabled and users of buggies
- Support to Village Hall Committee
- Support for new school
- Supporting cyclists
- Maintenance of footpaths, bridleways etc..

- Continued development of the Moat Area
- Control of alcohol sales
- Street scene improvement – control litter and dog fouling
- Support to business and farming

Local Joint Committee

Shawbury is located within the Wem and Shawbury Local Joint Committee Area. The needs and priorities raised by the local community as part of Local Joint Committee meetings can be seen at section 2.3.

Other Consultations

Local Development Framework Site Allocations and Management of Development DPD (SAMDev) – Issues and Options Consultation (April-June 2010)

Shawbury Parish Council representations on the SAMDev

(Representation reference no SAMDEV DPD/04IOP/002432/00001)

- Development of facilities for a football club
- Improved public transport to Market Towns, Shrewsbury and Telford
- Development of an allotment site.
- Possible bypass from Wytheford Road through to the Wem Road
- Retention of current development boundary
- Affordable housing for rent and purchase should be based on clearly audited identified local need
- Need for some small scale development of suitable housing for an ageing population wishing to 'down size' and also for those seeking to start on the purchasing ladder.
- No development should be allowed on any land that is at risk from flooding

3.4 INFRASTRUCTURE AND INVESTMENT DELIVERY FRAMEWORK FOR COMMUNITY HUBS IN THE WEM AREA

Shawbury (This covers Shawbury settlement but excludes the rest of the Parish, which is covered by the Rural Hinterland section (see page 97))

Infrastructure or investment requirements and opportunities	Critical Priority or Key	Lead delivery partner	Other partners	Cost	Funding secured	Funding gap	Timescale for delivery	Potential funding sources	Notes
Housing and cohesive, sustainable communities									
Housing for aging population	KEY	Developers							The Parish Council has expressed a desire to see small scale development of suitable housing for the aging population
Economic investment and opportunity									
Facilitation of ICT /broadband technologies	KEY	Shropshire Council A private sector delivery partner will be procured using the BDUK framework	BDUK Town and Parish Councils		£16.4 million across all of Shropshire (£8.2 Shropshire Council and £8.2 million from BDUK)		2015		The Connecting Shropshire aims to provide a minimum of 2 Mbps to all of Shropshire and as much superfast broadband as possible. The project will deliver to those communities that are not going to get either basic broadband

Infrastructure or investment requirements and opportunities	Critical Priority or Key	Lead delivery partner	Other partners	Cost	Funding secured	Funding gap	Timescale for delivery	Potential funding sources	Notes
									or superfast broadband under the private sector rollout.
Social and community infrastructure									
Development of extended area of the Glebe	PRIORITY	Shawbury Parish Council		£5,000				Developer contributions	The Parish Council has identified a desire to further develop the extended area of the Glebe, including gates, footpath, drainage improvements and fishing stands.
Development of Recreational Activities	KEY	Shawbury Parish Council							The Parish Council has identified a desire to develop additional recreational activities, in particular football facilities for all age groups.
Organisation of community events	KEY	Shawbury Parish Council, Village Hall Committee, RAF Shawbury (for fitness)	Shropshire Council,						The Parish Council has identified the need to encourage use of the village hall and suggested funding for an event coordinator.
Provision of	PRIORITY	Shropshire		c£4.48 per			ongoing	Developer	The PPG17 Study has

Infrastructure or investment requirements and opportunities	Critical Priority or Key	Lead delivery partner	Other partners	Cost	Funding secured	Funding gap	Timescale for delivery	Potential funding sources	Notes
amenity greenspace		Council (Community Services- Culture and Leisure) Shawbury Parish Council		m ² and maintenance costs of £0.55 per m ² x 20 years.				contributions	identified a current under provision of amenity greenspace.
Provision of recreational facilities for children	PRIORITY	Shropshire Council (Community Services- Culture and Leisure) Shawbury Parish Council		c£136.54 per m ² for a Local Area for Play plus c£4.37 x 20 for ongoing maintenance. c£143.55 per m ² for Local Equipped Area for Play plus c£7.65 x 20 for ongoing maintenance			ongoing	Developer contributions	The PPG17 Study has identified a current under provision in the supply of facilities for children
Provision of allotments	KEY	Shropshire Council (Community Services- Culture and Leisure)					ongoing	Developer contributions	The PPG17 Study has identified a current under provision in the supply of allotments

Infrastructure or investment requirements and opportunities	Critical Priority or Key	Lead delivery partner	Other partners	Cost	Funding secured	Funding gap	Timescale for delivery	Potential funding sources	Notes
		Shawbury Council							
Provision of toilet facilities in the Village Centre	KEY	Shawbury Parish Council	Shropshire Council						The Parish Council has identified the need for toilet provision in the village centre either a stand alone facility with a charge.
Review of primary school places to ensure sufficient provision	PRIORITY	Shropshire Council (Learning and Skills)	Developers	Dependent upon extent and location of development	None	To be determined through SAMDev	Dependent upon developer's timescales	Developer contributions, LA Capital Programme	An assessment of the effect on school places locally has been made based on proposed levels of development with delivery spread evenly over the remaining Plan period. This currently indicates that consideration will need to be given to the provision of extra primary school places in the town during this time span. This will be fully determined following SAMDev adoption.

Infrastructure or investment requirements and opportunities	Critical Priority or Key	Lead delivery partner	Other partners	Cost	Funding secured	Funding gap	Timescale for delivery	Potential funding sources	Notes
Review of secondary school places to ensure sufficient provision	PRIORITY	Shropshire Council (Learning and Skills)	Developers	Dependent upon extent and location of development	None	To be determined through SAMDev	Dependent upon developer's timescales	Developer contributions, LA's Capital Programme	An assessment of the effect on school places locally has been made based on proposed levels of development with delivery spread evenly over the remaining Plan period. Whilst this indicates that additional pressure will be placed on the secondary school capacity, it is anticipated that the additional in-area children will displace a consistent out-of-area trend on the school roll. Thus, it is considered that longer-term additional places will not be required, however, shorter-term provision may need to be made whilst out-of-area children make their way through the school. This situation will be fully determined following SAMDev adoption.

Infrastructure or investment requirements and opportunities	Critical Priority or Key	Lead delivery partner	Other partners	Cost	Funding secured	Funding gap	Timescale for delivery	Potential funding sources	Notes
Environment and climate change									
Upgrade to Sewage Treatment Works in Shawbury	CRITICAL	Severn Trent Water	Environment Agency				2010-2015	Severn Trent Water's Business Plan (AMP)	The Shropshire Water Cycle Study has identified that there is no current capacity at the WwTW for additional flows. However there are no known physical constraints to upgrading the works to accommodate additional flows. A new consent for the works would not be needed.
Upgrade sewerage infrastructure	CRITICAL	Severn Trent Water	Environment Agency, Developers	N/A	N/A	N/A	The sewer network is currently being reviewed by Severn Trent Water and will continue	Options are currently being appraised by Severn Trent Water as part of their capital investment programme.	An assessment of the effect on the sewer network has been made based on revised levels of development with delivery spread evenly over the Plan period. All flows drain to

Infrastructure or investment requirements and opportunities	Critical Priority or Key	Lead delivery partner	Other partners	Cost	Funding secured	Funding gap	Timescale for delivery	Potential funding sources	Notes
							to be reviewed every 6 months as part of the water company's sewer network plans to allow issues to be addressed in a timely manner		Shawbury SPS before being pumped 900m to Shawbury WWTW. There is a known flooding problem in the catchment to the south west of the pumping station but this is currently being appraised for resolution in the next 2/3 yrs. This is a small catchment of 225m dia sewers but there are no combined sewer overflows. It is considered that there is a medium potential for development to impact on the sewerage infrastructure.
Improvements to the streetscene	KEY	Shawbury Parish Council	Shropshire Council						<p>The Parish Council has identified the need for:</p> <ul style="list-style-type: none"> • Improved street lighting. • Reduce the amount of litter particularly around shops/take-

Infrastructure or investment requirements and opportunities	Critical Priority or Key	Lead delivery partner	Other partners	Cost	Funding secured	Funding gap	Timescale for delivery	Potential funding sources	Notes
									always, Village Hall, main road and verges and Elephant and Castle car park/grassed area. <ul style="list-style-type: none"> Improvements to the Shawbury Moat
Provision of natural and semi natural open space	PRIORITY	Shropshire Council (Community Services- Culture and Leisure)	Shawbury Parish Council	c£274 per dwelling x 20 years maintenance			Ongoing	Developer contributions	The PPG17 Study has identified a current under provision of natural and semi natural open space
Community Tree Scheme	KEY	Shropshire Council Development Services – Natural Environment)	Developers, Shropshire Council (Highways)	C£2640 per ha planted with tree whips. C£260 per new street tree.	£5000 to be shared throughout the council and provision of 10,000 trees		Ongoing	Shropshire Council Highways, Maelar Forest Nurseries, Whitchurch	Run an extensive Community Tree Scheme to provide opportunities to enhance the natural environment of the area. Costs include planting, stakes, tree guards and watering to establish trees over first 3 years.
Transport and accessibility									
Provision of traffic speed monitors	PRIORITY	Shropshire Council		£4,000				Developer contributions	The Parish Council has identified the need for

Infrastructure or investment requirements and opportunities	Critical Priority or Key	Lead delivery partner	Other partners	Cost	Funding secured	Funding gap	Timescale for delivery	Potential funding sources	Notes
		(Highways)							two traffic speed monitors on roads entering Shawbury
Public Transport Improvements	KEY	Public transport providers	Shropshire Council, Shawbury Parish Council						The Parish Council has identified the need for public transport improvements including an earlier/later bus service.
Improved Pedestrian and Cycle Facilities	KEY	Shawbury Parish Council, Shropshire Council (Highways)							<p>The Parish Council has identified the need to:</p> <ul style="list-style-type: none"> • Explore additional cycle facilities including a cycle route between Shawbury and Edgebolton and north-south through the village. In addition to reviewing the cycle parking provision. • Pavement improvements Church Close, Church Street,

Infrastructure or investment requirements and opportunities	Critical Priority or Key	Lead delivery partner	Other partners	Cost	Funding secured	Funding gap	Timescale for delivery	Potential funding sources	Notes
									<p>Elephant and Castle, Bridgeway and A53 (Mytton to the village).</p> <ul style="list-style-type: none"> Routes for circular walks
Local highway improvements, traffic management, parking provision and speed and safety enhancements	KEY	Shropshire Council (Highways)	Shawbury Parish Council						<p>The Parish Council has identified the need for improved road maintenance including pot holes.</p> <p>In addition to designating some country lanes as 'quiet lanes'</p> <p>The Parish Council has identified the need to investigate speeding at the Elephant and Castle access to the A53, introduce vehicle activated speed indicator signs, consider 20mph zones in built up areas and HGV weight limits.</p>

Infrastructure or investment requirements and opportunities	Critical Priority or Key	Lead delivery partner	Other partners	Cost	Funding secured	Funding gap	Timescale for delivery	Potential funding sources	Notes
Construction of a Shawbury By-Pass	KEY	Shropshire Council, Highways Agency	Shawbury Parish Council,						The Parish Council has identified the need for a Shawbury by-pass given the narrowness of the A53 at the village centre, volume of traffic and number of goods vehicles.

4. COMMUNITY CLUSTERS PLACE PLAN FOR THE WEM AREA

4.1 VISION FOR COMMUNITY CLUSTERS

The vision for *Community Clusters* is found in the Core Strategy Policy CS4, and is as follows:

Community Clusters are comprised of two or more smaller settlements, where the combined settlements offer a range of services contributing to a sustainable community. Community Clusters will have development that helps to rebalance rural communities by providing facilities, economic development or housing for local needs that is of a scale appropriate to the settlement.

Core Strategy Policy CS4

Within the Wem area, the following settlements have been put forward by the local community (via parish councils) as Community Clusters:

- Myddle and Harmer Hill

4.2 PROFILE OF COMMUNITY CLUSTERS IN THE WEM AREA

4.3 COMMUNITY LED PLANING IN THE COMMUNITY CLUSTERS IN THE WEM AREA

Community Led Plans

Whixall Parish Plan (2004)

The following have been taken from the Whixall Parish Plan as identified community needs and priorities:

- Countryside access
- Traffic speed
- Affordable housing
- Facilities for children
- Infrastructure

Local Joint Committee

Whixall is located within the Wem and Shawbury Local Joint Committee Area. The needs and priorities raised by the local community as part of Local Joint Committee meetings can be seen at section 2.3.

Other Consultations

Local Development Framework Site Allocations and Management of Development DPD (SAMDev) – Issues and Options Consultation (April-June 2010)

Whixall Parish Council representations on the SAMDev for Whixall, Hollinwood, Welsh End, Platt Lane, Stanley Green, Dobsons Bridge, Moss Cottages and Browns Brook

(Representation reference no SAMDEV DPD/04IOP/002463/00001)

- Improved/better maintained roads
- Improved drainage
- Improved and supported social infrastructure including a functioning public house, a community centre and community activities
- Starter homes and affordable homes for local people

Whixall Community Toolkit Event – 2nd February 2012

The following activities, facilities, services and infrastructure were considered to be the most important community assets by the event attendees:

Activities:

- Senior citizens groups and clubs
- Walking and rambling activities
- Sports Clubs

Facilities:

- Café/pub/restaurant
- Community centre/village hall
- School

Services:

- Shops
- Preserving nature and outdoors
- Post office
- Police/emergency services

Infrastructure:

- Broadband speed and connectivity
- Road improvements
- Walking and cycling networks

Full information and feedback from the Whixall Toolkit event is available at:
(<http://www.shropshire.gov.uk/factsfigures.nsf/open/C6BE79E370240015802577760045C7C5>)

4.4 **INFRASTRUCTURE AND INVESTMENT DELIVERY FRAMEWORK FOR COMMUNITY CLUSTERS IN THE WEM AREA**

Myddle and Harmer Hill (This includes the settlements of Myddle and Harmer Hill, but does not include the other areas in the parish currently proposed as ‘countryside’ under Section 5 of this Place Plan)

Infrastructure or investment requirements and opportunities	Critical Priority or Key	Lead delivery partner	Other partners	Cost	Funding secured	Funding gap	Timescale for delivery	Potential funding sources	Notes
Housing and cohesive, sustainable communities									
Developer contribution towards affordable housing	KEY	Shropshire Council (Development Services)		N/A	£11,700	N/A	Payable by Owner within 60 days of commencement.	Developer contributions	Developer contributions in relation to land Adj. Orchard House, Wem Road Harmer Hill. To be used to facilitate the delivery of additional affordable and/or supported housing elsewhere in the Council's administrative area. Development has not commenced- Awaiting payment from developers.

Infrastructure or investment requirements and opportunities	Critical Priority or Key	Lead delivery partner	Other partners	Cost	Funding secured	Funding gap	Timescale for delivery	Potential funding sources	Notes
Developer contribution towards affordable housing	KEY	Shropshire Council (Development Services)		N/A	£7,200	N/A	Payable by Landowner prior to occupation of 8th dwelling.	Developer contributions	Developer contributions in relation to Land at Lower Road Harmer Hill, Shrewsbury. To be used to facilitate the delivery of additional affordable and/or supported housing elsewhere in the Council's administrative area. Development has commenced- Trigger point has not been reached- Awaiting payment from developers.
Economic investment and opportunity									
Facilitation of ICT /broadband technologies	KEY	Shropshire Council A private sector delivery partner will be procured using the BDUK framework	BDUK Town and Parish Councils		£16.4 million across all of Shropshire (£8.2 Shropshire Council and £8.2 million from BDUK)		2015		The Connecting Shropshire aims to provide a minimum of 2 Mbps to all of Shropshire and as much superfast broadband as possible. The project will deliver to those communities that are not going to get either basic broadband

Infrastructure or investment requirements and opportunities	Critical Priority or Key	Lead delivery partner	Other partners	Cost	Funding secured	Funding gap	Timescale for delivery	Potential funding sources	Notes
									or superfast broadband under the private sector rollout.
Social and community infrastructure									
Environment and climate change									
Heritage at Risk register	KEY	Shropshire Council (Historic Environment)	English Heritage				ongoing	Developer contributions	EH 2010 Heritage at Risk register includes Myddle Castle. Engage local groups to identify future Buildings at Risk.
Community Tree Scheme	KEY	Shropshire Council Development Services – Natural Environment)	Developers, Shropshire Council (Highways)	£2640 per ha planted with tree whips. £260 per new street tree.	£5000 to be shared throughout the council and provision of 10,000 trees		Ongoing	Shropshire Council Highways, Maelar Forest Nurseries, Whitchurch	Run an extensive Community Tree Scheme to provide opportunities to enhance the natural environment of the area. Costs include planting, stakes, tree guards and watering to establish trees over first 3 years.
Support continuation of both village halls in the parish	KEY	Myddle and Broughton Parish Council							The Parish Council has express a wish to support the continuation of both village halls in the parish

Infrastructure or investment requirements and opportunities	Critical Priority or Key	Lead delivery partner	Other partners	Cost	Funding secured	Funding gap	Timescale for delivery	Potential funding sources	Notes
Support continuation of all three churches across the parish	KEY	Myddle and Broughton Parish Council, Churches							The Parish Council has identified a need to support the three churches in the parish, in order to enable the maintenance of burial grounds.
Ensuring Adequate Street Lighting	KEY	Myddle and Broughton Parish Council							The Parish Council has identified a need to ensure that there is adequate street lighting throughout the parish.
Transport and accessibility									
Maintain paths within the Parish	KEY	Shropshire Council							The Parish Council has identified a need to maintenance and ensure accessibility of all the paths within the parish.
Provision of Speed control measures	KEY	Shropshire Council, Myddle and Broughton Parish Council							The Parish Council has identified a need provide speed control measures in both Harmer Hill and Myddle.

5. WEM'S RURAL HINTERLAND PLACE PLAN

5.1 VISION FOR RURAL HINTERLAND

The vision for the *Rural Hinterland* is found in the Core Strategy Policy CS5, and is as follows:

New development will be strictly controlled in accordance with national planning policies protecting the countryside and Green Belt. Subject to further controls over development that apply to the Green Belt, development proposals on appropriate sites which maintain and enhance countryside vitality and character will be permitted where they improve the sustainability of rural communities by bringing local economic and community benefits.
Core Strategy Policy CS5

Within the Wem area, any area outside the town of Wem or the identified Community Cluster is considered to form Wem's Rural Hinterland.

5.2 PROFILE OF THE RURAL HINTERLAND IN THE WEM AREA

5.3 COMMUNITY LED PLANNING IN WEM'S RURAL HINTERLAND

Community Led Plans

Clive Parish Plan (undated)

The following have been taken from the Clive Parish Plan as identified community needs and priorities:

- Retention of open space including Drawwell and land opposite Clive Hall
- Need for provision for young people including a playground
- Additional recreational facilities
- Community activities and facilities
- Traffic

Grinshill Parish Council

A Parish Plan is nearing completion. Further information on the Parish Plan will be available in due course.

Hadnall Parish Plan (2003)

The following have been taken from the Hadnall Parish Plan as identified community needs and priorities:

- Future development within the Village boundary
- Transport including the A49
- Preservation and maintenance of village heritage including the Moat and Church
- Police presence
- Environmental upkeep
- Local services
- Sports and leisure activities
- Health services
- Lack of facilities for young people

Interested in conducting a refresh.

Loppington Parish Plan (2012 Review)

The following actions have been taken from the Loppington Parish Plan 2012 Review:

- Re-open a shop in Loppington village
- Adopt the Housing Needs Survey as SPD
- Repair mains leaks promptly and connect more premises to mains water
- Alter days of Shropshire Link Service
- Repair road defects promptly
- Minimise light pollution from future housing development
- Continue to explore further traffic calming measures throughout the parish and reduce statutory speed limits in rural areas
- Replace stiles with kissinggates or dog gates
- Increase Neighbourhood Watch membership and maintain links with local Police Team
- Provide more facilities to dispose of dog waste bags
- Establish a Parish website
- Reintroduce kerbside cardboard collections

Increase broadband speed

Moreton Corbet and Lee Brockhurst Parish Council

An interest in developing a Parish Plan has been expressed, further updates will be provided in due course.

Myddle and Broughton Parish Council

An interest in developing a Parish Plan has been expressed, further updates will be provided in due course.

Shawbury Parish Plan (2010)

- Refer to page 51

Stanton-Upon-Hine Heath and High Hatton (2005)

The following have been taken from the Stanton-Upon-Hine Heath and High Hatton Parish Plan as identified community needs and priorities:

- Broadband
- Transport
- Children and young people
- Crime
- Dog fouling
- Footpaths
- Green space
- Health care
- Litter
- Mains gas
- Parking
- Recycling and waste collection
- Street lighting
- Speed limits

Wem Town Plan (2007)

- Refer to page 8

Wem Rural Parish Council

A Parish Plan is currently under development with community consultation currently underway, further updates will be provided in due course.

Weston under Redcastle Parish Council

A Parish Plan steering group has been set up and questionnaire distributed, further updates will be provided in due course.

Whixall Parish Plan (2004)

- Refer to page 63

Local Joint Committee

Clive, Hadnall, Loppington, Stanton-Upon-Hine Heath, Wem, Wem Rural, Moreton Corbet and Lee Brockhurst, Grinshill, Weston under Redcastle, Shawbury, Whixall and Myddle and Broughton are located within the Wem and Shawbury Local Joint Committee Area. The needs and priorities raised by the local community as part of Local Joint Committee meetings can be seen at section 2.3.

Other Consultations

Local Development Framework Core Strategy- Issues and Options Consultation (January- March 2009)

Wem Town Council representations on the Core Strategy

(Representation reference no CORESTRATEGY002453/00001/002)

- Refer to page 9

Local Development Framework Core Strategy- Policy Directions Consultation (August – October 2009)

Wem Town Council representations on the Core Strategy

(Representation reference no CORE STRATEGY002453/00002/004)

- Refer to page 9

**Local Development Framework Core Strategy- Final Plan Publication
(February- March 2010)**

Wem Town Council representations on the Core Strategy

(Representation reference no

CORESTRATEGY/09RSUB/002453/00003/007)

- Refer to page 9

Wem Rural Parish Council representations on the Core Strategy

(Representation reference no CORE STRATEGY/09RSUB/06402/00001/003)

- Improve speeds and availability of broadband.
- Small scale economic development
- Focus on development in the Wem Industrial Estate
- Limited development to meet housing needs linked with planned economic development in the area.
- Leisure facilities and safe cycle routes to Wem

**Local Development Framework Site Allocations and Management of
Development DPD (SAMDev) – Issues and Options Consultation (April-
June 2010)**

Clive Parish Council representations on the SAMDev

(Representation reference no SAMDEV DPD/04IOP/002349/00001)

- Strong preference for little or no development in Clive parish
- Desire to be a stand alone settlement in open countryside

Grinshill Parish Council representations on the SAMDev

(Representation reference no)

- Public transport bus links to Wem and Shrewsbury

Hadnall Parish Council representations on the SAMDev

(Representation reference no SAMDEV DPD/04IOP/002375/00001)

For Hadnall

- Hadnall already has a good bus service.
- The Post Office has been lost and replaced by a service with limited hours in the Village Hall.
- Hadnall has recently turned down the opportunity to provide a recreational facility (section 106 Agreement) because there is no perceived need.

Loppington Parish Council representations on the SAMDev

(Representation reference no SAMDEV DPD/04IOP/002396/00001)

- No further affordable housing is required

Myddle and Broughton Parish Council representations on the SAMDev

(Representation reference no SAMDEV DPD/04IOP/002396/00001)

- Development of affordable housing should only take place after a detailed and audited assessment of the need within the Parish Boundary and only developed to satisfy those needs

Shawbury Parish Council representations on the SAMDev

(Representation reference no SAMDEV DPD/04IOP/002432/00001)

- Refer to page 52

Stanton upon Hine Heath Parish Council representations on the SAMDev

(Representation reference no SAMDEV DPD/04IOP/002440/00001)

- The Parish Council would like to retain the existing development boundary for Stanton-upon-Hine Heath with no amendments.
- Support for the conversion of redundant buildings for housing or appropriate commercial use.
- Housing for local needs is required
- Retention of the existing development boundary

Wem Town Council representations on the SAMDev

(Representation reference no SAMDEV DPD/04IOP/002453/00004)

- Refer to page 10

Wem Rural Parish Council representations on the SAMDev

(Representation reference no SAMDEV DPD/04IOP/002452/00001)

- Maintaining and expanding the Rights of Way and countryside facilities
- 'By pass to Wem (a link road from western end Aston Road to Shawbury Road)
- Public transport
- Health and social care facilities
- Expansion of schools
- Recreational facilities

Weston under Redcastle Parish Council representations on the SAMDev

(Representation reference no SAMDEV DPD/04IOP/002457/00001)

- Public transport bus links to Wem and Shrewsbury

Whixall Parish Council representations on the SAMDev for Whixall, Hollinwood, Welsh End, Platt Lane, Stanley Green, Dobsons Bridge, Moss Cottages and Browns Brook

(Representation reference no SAMDEV DPD/04IOP/002463/00001)

- Refer to page 64

Investing in Shropshire's Future- Local Infrastructure and Investment Workshop with Wem Town Council (20th September 2010)

- Refer to page 10

Loppington Community Toolkit Event – 16th June 2010

The following activities, facilities, services and infrastructure were considered to be the most important community assets by the event attendees:

Activities:

- Senior citizens groups and clubs
- W.I.
- Children and family activities
- Youth groups and clubs

Facilities:

- Café/pub/restaurant
- Community centre/village hall
- Places of worship

Services:

- Post office services
- Healthcare
- Advice/information services

Infrastructure:

- Broadband speed and connectivity
- Road improvements

Full information and feedback from the Loppington Toolkit event is available at:
(<http://www.shropshire.gov.uk/factsfigures.nsf/open/C6BE79E370240015802577760045C7C5>)

Wem Community Toolkit Event – 3rd February 2011

- *Refer to Page 10*

Wem Rural Community Toolkit Event – 18th January 2011

The following activities, facilities, services and infrastructure were considered to be the most important community assets by the event attendees:

Activities:

- Children and family activities
- Walking and rambling activities
- Youth groups and clubs
- Senior citizens groups and clubs

Facilities:

- Café/pub/restaurant
- Community centre/village hall
- School
- Places of worship

Services:

- Banking
- Healthcare
- Police/ emergency services
- Post office services

Infrastructure:

- Road improvements
- Broadband speed and connectivity
- Job opportunities
- Walking and cycling networks

The following points were raised by members of the community as ideas for projects to revitalise the town:

Transport:

- Improved and extra cycle routes – to encourage visitors and locals
- Improve safety on roads and lanes for cyclists and walkers
- Restricting traffic on unclassified roads. Providing footpaths

Other ideas:

- More support in the home for the elderly
- Neighbourhood watch: increase feeling of safety
- When planning decisions are being made, can more be done to enforce the architectural look to be more in keeping with traditional styles in the area? E.g. Cotswolds building in common stone

Other comments and contributions were also made using the graffiti wall:

- Road conditions and maintenance to facilitate communications in rural environment
- Broadband needs to improve
- Loitering in Edstaston by the village hall by young people. Perhaps a neighbourhood watch could dissuade this
- Some provision of affordable sustainable housing to maintain growth/youth in communities. Small development rather than larger central ones
- Positive action to provide appropriate housing for younger people and families
- Need small scale economic development in rural areas, but not that which stretches infrastructure and environment to its limits

Full information and feedback from the Wem Rural Toolkit event is available at:

<http://www.shropshire.gov.uk/factsfigures.nsf/open/C6BE79E370240015802577760045C7C5>

Whixall Community Toolkit Event – 2nd February 2012

- Refer to page 64

5.4 INFRASTRUCTURE AND INVESTMENT DELIVERY FRAMEWORK FOR WEM'S RURAL HINTERLAND

Clive Parish

Infrastructure or investment requirements and opportunities	Critical Priority or Key	Lead delivery partner	Other partners	Cost	Funding secured	Funding gap	Timescale for delivery	Potential funding sources	Notes
Housing and cohesive, sustainable communities									
Developer contribution towards affordable housing	KEY	Shropshire Council (Development Services)		N/A	£11,700	N/A	Payable by Owner within 60 days of commencement.	Developer contributions	Developer contributions in relation to land adjacent to Woodlands, Wem Road, Clive. To be used to facilitate the delivery of additional affordable and/or supported housing elsewhere in the Council's administrative area. Development has not commenced- Awaiting payment from developers.
Economic investment and opportunity									
Facilitation of ICT /broadband technologies	KEY	Shropshire Council A private sector delivery	BDUK Town and Parish Councils		£16.4 million across all of Shropshire (£8.2 Shropshire		2015		The Connecting Shropshire aims to provide a minimum of 2 Mbps to all of Shropshire and as much

Infrastructure or investment requirements and opportunities	Critical Priority or Key	Lead delivery partner	Other partners	Cost	Funding secured	Funding gap	Timescale for delivery	Potential funding sources	Notes
		partner will be procured using the BDUK framework			Council and £8.2 million from BDUK)				<p>superfast broadband as possible.</p> <p>The project will deliver to those communities that are not going to get either basic broadband or superfast broadband under the private sector rollout.</p> <p>The Parish Council has identified the need for improved broadband provision.</p>
Social and community infrastructure									
Additional Community Groups	KEY	Clive Parish Council							The Parish Council has identified the need to establish a local history group and photographic club.
Enhanced Community Facilities	KEY	Clive Parish Council, Shropshire Council (Leisure Services)							The Parish Council has identified the need for the acquisition of an open area for village events and for use as children's sports facility/playground - suggested Renshaw's

Infrastructure or investment requirements and opportunities	Critical Priority or Key	Lead delivery partner	Other partners	Cost	Funding secured	Funding gap	Timescale for delivery	Potential funding sources	Notes
									Field. Ahead of the results of their Parish Plan questionnaire, the Parish Council has also suggested a need for a new bus shelter and additional recreation land.
Environment and climate change									
Community Tree Scheme	KEY	Shropshire Council Development Services – Natural Environment)	Developers, Shropshire Council (Highways)	C£2640 per ha planted with tree whips. C£260 per new street tree.	£5000 to be shared throughout the council and provision of 10,000 trees		Ongoing	Shropshire Council Highways, Maelar Forest Nurseries, Whitchurch	Run an extensive Community Tree Scheme to provide opportunities to enhance the natural environment of the area. Costs include planting, stakes, tree guards and watering to establish trees over first 3 years.
Transport and accessibility									
Local highway improvements, traffic management, parking provision and speed and safety	KEY	Shropshire Council (Highways)	Clive Parish Council						The Parish Council has identified the need to improve the passing places on the main access roads into the village. In addition to the introduction of additional

Infrastructure or investment requirements and opportunities	Critical Priority or Key	Lead delivery partner	Other partners	Cost	Funding secured	Funding gap	Timescale for delivery	Potential funding sources	Notes
enhancements									traffic calming measures and the relocation of notice boards and also bus stops from pinch points.
Improvements to Rights of Way	KEY	Shropshire Council	Clive Parish Council						The Parish Council has identified the need for improvements to the public Rights of Way network.

Grinshill Parish

Infrastructure or investment requirements and opportunities	Critical Priority or Key	Lead delivery partner	Other partners	Cost	Funding secured	Funding gap	Timescale for delivery	Potential funding sources	Notes
Housing and cohesive, sustainable communities									
Economic investment and opportunity									
Facilitation of ICT /broadband	CRITICAL	Shropshire Council	BDUK Town and		£16.4 million across all of		2015		The Connecting Shropshire aims to

Infrastructure or investment requirements and opportunities	Critical Priority or Key	Lead delivery partner	Other partners	Cost	Funding secured	Funding gap	Timescale for delivery	Potential funding sources	Notes
technologies		A private sector delivery partner will be procured using the BDUK framework	Parish Councils		Shropshire (£8.2 Shropshire Council and £8.2 million from BDUK)				<p>provide a minimum of 2 Mbps to all of Shropshire and as much superfast broadband as possible.</p> <p>The project will deliver to those communities that are not going to get either basic broadband or superfast broadband under the private sector rollout.</p> <p>The Parish Council has identified that there needs to be improvements in the provision of broadband to keep up with modern technology.</p>
Social and community infrastructure									
Water pressure issues	PRIORITY	Severn Trent Water							The Parish Council has identified that high water pressure in the area is a problem which causes excessive leaks.
Improve access to the village hall	KEY	Grinshall Parish							The Parish Council has identified the need to

Infrastructure or investment requirements and opportunities	Critical Priority or Key	Lead delivery partner	Other partners	Cost	Funding secured	Funding gap	Timescale for delivery	Potential funding sources	Notes
		Council							improve access to the existing village hall. The hall is placed at the back of the village with a small car park. Relocation to a more central area with parking is being discussed in the village along with the alternative to provide extra car parking within walking distance of the existing village hall for able bodied users.
Environment and climate change									
Community Tree Scheme	KEY	Shropshire Council Development Services – Natural Environment)	Developers, Shropshire Council (Highways)	C£2640 per ha planted with tree whips. C£260 per new street tree.	£5000 to be shared throughout the council and provision of 10,000 trees		Ongoing	Shropshire Council Highways, Maelar Forest Nurseries, Whitchurch	Run an extensive Community Tree Scheme to provide opportunities to enhance the natural environment of the area. Costs include planting, stakes, tree guards and watering to establish trees over first 3 years.
Transport and accessibility									
Reinstatement of the bus service	PRIORITY	Bus providers	Shropshire Council, Grinshill						The Parish Council has identified a need for the bus service to be

Infrastructure or investment requirements and opportunities	Critical Priority or Key	Lead delivery partner	Other partners	Cost	Funding secured	Funding gap	Timescale for delivery	Potential funding sources	Notes
			Parish Council						reinstated to help residents travelling to work and retired residents
Improvements to road access to Church	KEY	Shropshire Council							The Parish Council has identified a need to make improvements to the road up to the church.

Hadnall Parish

Infrastructure or investment requirements and opportunities	Critical Priority or Key	Lead delivery partner	Other partners	Cost	Funding secured	Funding gap	Timescale for delivery	Potential funding sources	Notes
Housing and cohesive, sustainable communities									

Infrastructure or investment requirements and opportunities	Critical Priority or Key	Lead delivery partner	Other partners	Cost	Funding secured	Funding gap	Timescale for delivery	Potential funding sources	Notes
Developer contribution towards affordable housing	KEY	Shropshire Council (Development Services)		N/A	£34,443	N/A	Payable by Landowner prior to occupation of 6th dwelling.	Developer contributions	Developer contributions in relation to land at Church Farm, Shrewsbury Road, Hadnall. To be used to facilitate the delivery of additional affordable and/or supported housing elsewhere in the Council's administrative area. Development has not commenced- Awaiting payment from developers.
Developer contribution towards affordable housing	KEY	Shropshire Council (Development Services)		N/A	£11,700	N/A	Payable by Owner within 60 days of commencement.	Developer contributions	Developer contributions in relation to land to the rear of Hall Farmhouse, Shrewsbury Road, Hadnall. To be used to facilitate the delivery of additional affordable and/or supported housing elsewhere in the Council's administrative area. Development has not commenced- Awaiting payment from

Infrastructure or investment requirements and opportunities	Critical Priority or Key	Lead delivery partner	Other partners	Cost	Funding secured	Funding gap	Timescale for delivery	Potential funding sources	Notes
									developers.
Economic investment and opportunity									
Facilitation of ICT /broadband technologies	KEY	Shropshire Council A private sector delivery partner will be procured using the BDUK framework	BDUK Town and Parish Councils		£16.4 million across all of Shropshire (£8.2 Shropshire Council and £8.2 million from BDUK)		2015		<p>The Connecting Shropshire aims to provide a minimum of 2 Mbps to all of Shropshire and as much superfast broadband as possible.</p> <p>The project will deliver to those communities that are not going to get either basic broadband or superfast broadband under the private sector rollout.</p>
Social and community infrastructure									

Infrastructure or investment requirements and opportunities	Critical Priority or Key	Lead delivery partner	Other partners	Cost	Funding secured	Funding gap	Timescale for delivery	Potential funding sources	Notes
Developer contribution towards open space	KEY	Shropshire Council (Development Services)		N/A	£15,545	N/A	Payable by Landowner prior to occupation of 6th dwelling.	Developer contributions	Developer contributions in relation to land at Church Farm, Shrewsbury Road, Hadnall. To be used for the provision of Play Equipment within the vicinity of the site. Development has not commenced- Awaiting payment from developers.
Protection of Heritage Sites	KEY	English Heritage, Handall Parish Council, Shropshire Council							The Parish Council has identified the need for additional funding for maintenance, increased access and potential local ownership of the heritage assets.
Provision of courses and classes in the Parish.	KEY	Hadnall Parish Council	Shropshire Council, Local Education Providers						The Parish Council has identified the need for additional courses and classes in the Parish which cover all subjects and activities.
Activities for Young People	KEY	Hadnall Parish Council	Shropshire Council, Youth Organisations						The Parish Council has identified the need for more facilities and activities for young

Infrastructure or investment requirements and opportunities	Critical Priority or Key	Lead delivery partner	Other partners	Cost	Funding secured	Funding gap	Timescale for delivery	Potential funding sources	Notes
									people, including: <ul style="list-style-type: none"> A youth committee
Open Space Provision	KEY	Hadnall Parish Council	Shropshire Council						The Parish Council has identified the need for: <ul style="list-style-type: none"> An outdoor area in which a wide range of activities can take place throughout the year
Improved Health Facilities	KEY	PCT	Hadnall Parish Council						The Parish Council has identified the need for a central location for health facilities. In addition to a prescription collection service in the village.
Environment and climate change									
Community Tree Scheme	KEY	Shropshire Council Development Services – Natural Environment)	Developers, Shropshire Council (Highways)	C£2640 per ha planted with tree whips. C£260 per new street tree.	£5000 to be shared throughout the council and provision of 10,000 trees		Ongoing	Shropshire Council Highways, Maelar Forest Nurseries, Whitchurch	Run an extensive Community Tree Scheme to provide opportunities to enhance the natural environment of the area. Costs include planting, stakes,

Infrastructure or investment requirements and opportunities	Critical Priority or Key	Lead delivery partner	Other partners	Cost	Funding secured	Funding gap	Timescale for delivery	Potential funding sources	Notes
									tree guards and watering to establish trees over first 3 years.
Transport and accessibility									
Improved Public Transport	KEY	Public Transport Providers	Shropshire Council, Hadnall Parish Council						The Parish Council have identified the need for a more frequent and better timetabled bus service.
Local highway improvements, traffic management, parking provision and speed and safety enhancements	KEY	Shropshire Council (Highways)	Hadnall Parish Council, West Mercia Police						<p>The Parish Council has identified the need for:</p> <ul style="list-style-type: none"> • More suitable off street car parking at the shop and Church. • Increased Police monitoring of speed limits • Provide crossing points with drop kerbs on the A49 which will improve access to the shop
Village By-Pass	KEY	Highways Agency,							The Parish Council has identified the need for a

Infrastructure or investment requirements and opportunities	Critical Priority or Key	Lead delivery partner	Other partners	Cost	Funding secured	Funding gap	Timescale for delivery	Potential funding sources	Notes
		Shropshire Council (Highways)							village by-pass.
Opening of Hadnall Railway Station	KEY	Crewe to Shrewsbury Rail Users Associatio, Network Rail,	Hadnall Parish Council, Shropshire Council						The Parish Council has identified the need for the reinstatement of Hadnall Railway Station.
Improved pedestrian facilities	KEY	Hadnall Parish Council, Shropshire Council							The Parish Council has identified the need for a network of footpaths and footways within the Parish.

Loppington Parish

Infrastructure or investment requirements and opportunities	Critical Priority or Key	Lead delivery partner	Other partners	Cost	Funding secured	Funding gap	Timescale for delivery	Potential funding sources	Notes
Housing and cohesive, sustainable communities									

Infrastructure or investment requirements and opportunities	Critical Priority or Key	Lead delivery partner	Other partners	Cost	Funding secured	Funding gap	Timescale for delivery	Potential funding sources	Notes
Economic investment and opportunity									
Facilitation of ICT /broadband technologies	KEY	Shropshire Council A private sector delivery partner will be procured using the BDUK framework	BDUK Town and Parish Councils		£16.4 million across all of Shropshire (£8.2 Shropshire Council and £8.2 million from BDUK)		2015		<p>The Connecting Shropshire aims to provide a minimum of 2 Mbps to all of Shropshire and as much superfast broadband as possible.</p> <p>The project will deliver to those communities that are not going to get either basic broadband or superfast broadband under the private sector rollout.</p>
Promoting Tourism	KEY	Shropshire Council (Development Services-Economic Development)	Loppington Parish Council						<p>The Parish Council has identified the need for better provision for tourists, including:</p> <ul style="list-style-type: none"> • Publish literature • Provision of information boards and way markers • Identify car parking sites

Infrastructure or investment requirements and opportunities	Critical Priority or Key	Lead delivery partner	Other partners	Cost	Funding secured	Funding gap	Timescale for delivery	Potential funding sources	Notes
Social and community infrastructure									
Improve facilities for young people	KEY	Loppington Parish Council	Shropshire Council, Youth Groups						The Parish Council has identified the need for: A youth forum
Establishment of a Conservation Group	KEY	Loppington Parish Council	Volunteers						The Parish Council wish to establish a conservation group.
Enhance Parish Communication	KEY	Loppington Parish Council							The Parish Council has identified the need for: <ul style="list-style-type: none"> • Improvements to notice boards including – additional provision, possible relocation and upgrading • Maintain the Village News • Establish a Parish website
Provision of additional burial space	KEY	Loppington Parish Council, Shropshire Council							
Environment and climate change									

Infrastructure or investment requirements and opportunities	Critical Priority or Key	Lead delivery partner	Other partners	Cost	Funding secured	Funding gap	Timescale for delivery	Potential funding sources	Notes
Connect properties to mains drainage	KEY	Severn Trent	Loppington Parish Council, Shropshire Council						The Parish Council has identified the need to discuss with Severn Trent the potential of connecting more properties to mains drainage.
Connect properties to National Grid	KEY	National Grid	Loppington Parish Council, Shropshire Council						The Parish Council wish to see more properties connected to the National Grid.
Improve recycling facilities	KEY	Loppington Parish Council, Shropshire Council							The Parish Council have identified the need for kerbside recycling and also additional recycling provision but acknowledge there finding an appropriate site may be difficult
Improvements to the streetscene	KEY	Loppington Parish Council, Shropshire Council							The Parish Council has identified the need for additional litter bins and dog waste bins
Community Tree Scheme	KEY	Shropshire Council Development Services – Natural	Developers, Shropshire Council	C£2640 per ha planted with tree whips.	£5000 to be shared throughout the council and		Ongoing	Shropshire Council Highways, Maelar Forest	Run an extensive Community Tree Scheme to provide opportunities to enhance

Infrastructure or investment requirements and opportunities	Critical Priority or Key	Lead delivery partner	Other partners	Cost	Funding secured	Funding gap	Timescale for delivery	Potential funding sources	Notes
		Environment)	(Highways)	C£260 per new street tree.	provision of 10,000 trees			Nurseries, Whitchurch	the natural environment of the area. Costs include planting, stakes, tree guards and watering to establish trees over first 3 years.
Transport and accessibility									
Improve public transport	KEY	Bus operators	Loppington Parish Council, Shropshire Council						The Parish Council has identified the need for disabled access on all public transport and also an assessment of current use of public transport and potential use of additional services.
Improve pedestrian and cycling facilities	KEY	Loppington Parish Council, Shropshire Council							<p>The Parish Council has identified the need for:</p> <ul style="list-style-type: none"> • More cycle way markers and cycle racks. • Repair/ replace stiles and kissing gates

Morton Corbett and Lee Brockhurst Parish

Infrastructure or investment requirements and opportunities	Critical Priority or Key	Lead delivery partner	Other partners	Cost	Funding secured	Funding gap	Timescale for delivery	Potential funding sources	Notes
Housing and cohesive, sustainable communities									
Economic investment and opportunity									
Facilitation of ICT /broadband technologies	KEY	Shropshire Council A private sector delivery partner will be procured using the BDUK framework	BDUK Town and Parish Councils		£16.4 million across all of Shropshire (£8.2 Shropshire Council and £8.2 million from BDUK)		2015		<p>The Connecting Shropshire aims to provide a minimum of 2 Mbps to all of Shropshire and as much superfast broadband as possible.</p> <p>The project will deliver to those communities that are not going to get either basic broadband or superfast broadband under the private sector rollout.</p>
Social and community infrastructure									
Environment and climate change									
Community Tree Scheme	KEY	Shropshire Council	Developers, Shropshire	C£2640 per ha planted	£5000 to be shared		Ongoing	Shropshire Council	Run an extensive Community Tree

Infrastructure or investment requirements and opportunities	Critical Priority or Key	Lead delivery partner	Other partners	Cost	Funding secured	Funding gap	Timescale for delivery	Potential funding sources	Notes
		Development Services – Natural Environment)	Council (Highways)	with tree whips. C£260 per new street tree.	throughout the council and provision of 10,000 trees			Highways, Maelar Forest Nurseries, Whitchurch	Scheme to provide opportunities to enhance the natural environment of the area. Costs include planting, stakes, tree guards and watering to establish trees over first 3 years.
Transport and accessibility									

Myddle and Broughton Parish

Infrastructure or investment requirements and opportunities	Critical Priority or Key	Lead delivery partner	Other partners	Cost	Funding secured	Funding gap	Timescale for delivery	Potential funding sources	Notes
Housing and cohesive, sustainable communities									
Developer contribution towards affordable housing	KEY	Shropshire Council (Development Services)		N/A	£11,700	N/A	Payable by Owner within 60 days of commencement.	Developer contributions	Developer contributions in relation to land Adj. Orchard House, Wem Road Harmer Hill. To be used to facilitate the delivery of additional affordable and/or

Infrastructure or investment requirements and opportunities	Critical Priority or Key	Lead delivery partner	Other partners	Cost	Funding secured	Funding gap	Timescale for delivery	Potential funding sources	Notes
									supported housing elsewhere in the Council's administrative area. Development has not commenced- Awaiting payment from developers.
Developer contribution towards affordable housing	KEY	Shropshire Council (Development Services)		N/A	£7,200	N/A	Payable by Landowner prior to occupation of 8th dwelling.	Developer contributions	Developer contributions in relation to Land at Lower Road Harmer Hill, Shrewsbury. To be used to facilitate the delivery of additional affordable and/or supported housing elsewhere in the Council's administrative area. Development has commenced- Trigger point has not been reached- Awaiting payment from developers.
Economic investment and opportunity									
Facilitation of ICT /broadband technologies	KEY	Shropshire Council A private sector delivery	BDUK Town and Parish Councils		£16.4 million across all of Shropshire (£8.2 Shropshire		2015		The Connecting Shropshire aims to provide a minimum of 2 Mbps to all of Shropshire and as much

Infrastructure or investment requirements and opportunities	Critical Priority or Key	Lead delivery partner	Other partners	Cost	Funding secured	Funding gap	Timescale for delivery	Potential funding sources	Notes
		partner will be procured using the BDUK framework			Council and £8.2 million from BDUK)				superfast broadband as possible. The project will deliver to those communities that are not going to get either basic broadband or superfast broadband under the private sector rollout.
Social and community infrastructure									
Environment and climate change									
Heritage at Risk register	KEY	Shropshire Council (Historic Environment)	English Heritage				ongoing	Developer contributions	EH 2010 Heritage at Risk register includes Myddle Castle. Engage local groups to identify future Buildings at Risk.
Community Tree Scheme	KEY	Shropshire Council Development Services – Natural Environment)	Developers, Shropshire Council (Highways)	C£2640 per ha planted with tree whips. C£260 per new street tree.	£5000 to be shared throughout the council and provision of 10,000 trees		Ongoing	Shropshire Council Highways, Maelar Forest Nurseries, Whitchurch	Run an extensive Community Tree Scheme to provide opportunities to enhance the natural environment of the area. Costs include planting, stakes, tree guards and watering to establish

Infrastructure or investment requirements and opportunities	Critical Priority or Key	Lead delivery partner	Other partners	Cost	Funding secured	Funding gap	Timescale for delivery	Potential funding sources	Notes
									trees over first 3 years.
Support continuation of both village halls in the parish	KEY	Myddle and Broughton Parish Council							The Parish Council has express a wish to support the continuation of both village halls in the parish
Support continuation of all three churches across the parish	KEY	Myddle and Broughton Parish Council, Churches							The Parish Council has identified a need to support the three churches in the parish, in order to enable the maintenance of burial grounds.
Ensuring Adequate Street Lighting	KEY	Myddle and Broughton Parish Council							The Parish Council has identified a need to ensure that there is adequate street lighting throughout the parish.
Transport and accessibility									
Maintain paths within the Parish	KEY	Shropshire Council							The Parish Council has identified a need to maintenance and ensure accessibility of all the paths within the parish.
Provision of Speed control measures	KEY	Shropshire Council, Myddle and Broughton							The Parish Council has identified a need provide speed control measures in both Harmer Hill and

Infrastructure or investment requirements and opportunities	Critical Priority or Key	Lead delivery partner	Other partners	Cost	Funding secured	Funding gap	Timescale for delivery	Potential funding sources	Notes
		Parish Council							Myddle.

Shawbury Parish (This covers the entire Parish but excludes the Community Hub (see page 53) in the Parish)

Infrastructure or investment requirements and opportunities	Critical Priority or Key	Lead delivery partner	Other partners	Cost	Funding secured	Funding gap	Timescale for delivery	Potential funding sources	Notes
Housing and cohesive, sustainable communities									
Economic investment and opportunity									
Facilitation of ICT /broadband technologies	KEY	Shropshire Council A private sector delivery partner will be procured using the BDUK framework	BDUK Town and Parish Councils		£16.4 million across all of Shropshire (£8.2 Shropshire Council and £8.2 million from BDUK)		2015		<p>The Connecting Shropshire aims to provide a minimum of 2 Mbps to all of Shropshire and as much superfast broadband as possible.</p> <p>The project will deliver to those communities that are not going to get either basic broadband</p>

Infrastructure or investment requirements and opportunities	Critical Priority or Key	Lead delivery partner	Other partners	Cost	Funding secured	Funding gap	Timescale for delivery	Potential funding sources	Notes
									or superfast broadband under the private sector rollout.
Social and community infrastructure									
Environment and climate change									
Community Tree Scheme	KEY	Shropshire Council Development Services – Natural Environment)	Developers, Shropshire Council (Highways)	C£2640 per ha planted with tree whips. C£260 per new street tree.	£5000 to be shared throughout the council and provision of 10,000 trees		Ongoing	Shropshire Council Highways, Maelar Forest Nurseries, Whitchurch	Run an extensive Community Tree Scheme to provide opportunities to enhance the natural environment of the area. Costs include planting, stakes, tree guards and watering to establish trees over first 3 years.
Transport and accessibility									

Stanton-Upon-Hine Heath and High Hatton Parish

Infrastructure or investment requirements and opportunities	Critical Priority or Key	Lead delivery partner	Other partners	Cost	Funding secured	Funding gap	Timescale for delivery	Potential funding sources	Notes
Housing and cohesive, sustainable communities									
Economic investment and opportunity									
Facilitation of ICT /broadband technologies	PRIORITY	Shropshire Council A private sector delivery partner will be procured using the BDUK framework	BDUK Town and Parish Councils		£16.4 million across all of Shropshire (£8.2 Shropshire Council and £8.2 million from BDUK)		2015		<p>The Connecting Shropshire aims to provide a minimum of 2 Mbps to all of Shropshire and as much superfast broadband as possible.</p> <p>The project will deliver to those communities that are not going to get either basic broadband or superfast broadband under the private sector rollout.</p>
Social and community infrastructure									
Environment and climate change									
Provision of Mains Gas	KEY	Mains gas providers	Stanton Upon High Heath Parish Council						The Parish Council has expressed an interest in exploring the feasibility of a mains gas supply.

Infrastructure or investment requirements and opportunities	Critical Priority or Key	Lead delivery partner	Other partners	Cost	Funding secured	Funding gap	Timescale for delivery	Potential funding sources	Notes
Transport and accessibility									
Improved Footpaths	KEY	Stanton Upon High Heath Parish Council, Shropshire Council							The Parish Council has identified the need for a paved foot/cycle path along the A53 from Stanton Crossroads to Shawbury.

Wem Rural

Infrastructure or investment requirements and opportunities	Critical Priority or Key	Lead delivery partner	Other partners	Cost	Funding secured	Funding gap	Timescale for delivery	Potential funding sources	Notes
Housing and cohesive, sustainable communities									
Economic investment and opportunity									
Facilitation of ICT /broadband technologies	KEY	Shropshire Council A private sector	BDUK Town and Parish Councils		£16.4 million across all of Shropshire (£8.2		2015		The Connecting Shropshire aims to provide a minimum of 2 Mbps to all of

Infrastructure or investment requirements and opportunities	Critical Priority or Key	Lead delivery partner	Other partners	Cost	Funding secured	Funding gap	Timescale for delivery	Potential funding sources	Notes
		delivery partner will be procured using the BDUK framework			Shropshire Council and £8.2 million from BDUK)				<p>Shropshire and as much superfast broadband as possible.</p> <p>The project will deliver to those communities that are not going to get either basic broadband or superfast broadband under the private sector rollout.</p> <p>The Parish Council has identified a need for improved broadband provision.</p>
Mobile phone reception	KEY	Mobile phone providers	Parish Council						The Parish Council has identified a need for improved mobile phone reception.
Social and community infrastructure									
Enhanced community facilities	KEY	Shropshire Council							<p>The Parish Council have identified the need for the following community facilities:-</p> <ul style="list-style-type: none"> A Multi Use Games Area (MUGA) at Newtown

Infrastructure or investment requirements and opportunities	Critical Priority or Key	Lead delivery partner	Other partners	Cost	Funding secured	Funding gap	Timescale for delivery	Potential funding sources	Notes
									<ul style="list-style-type: none"> Outdoor area attached to Edstaston Village Hall Childrens play area at Quina Brook
Environment and climate change									
Community Tree Scheme	KEY	Shropshire Council Development Services – Natural Environment)	Developers, Shropshire Council (Highways)	C£2640 per ha planted with tree whips. C£260 per new street tree.	£5000 to be shared throughout the council and provision of 10,000 trees		Ongoing	Shropshire Council Highways, Maelar Forest Nurseries, Whitchurch	Run an extensive Community Tree Scheme to provide opportunities to enhance the natural environment of the area. Costs include planting, stakes, tree guards and watering to establish trees over first 3 years.
Transport and accessibility									
Speed control measures	KEY	Shropshire Council, Parish Council							The Parish Council has identified a need for traffic speed control measures.
Improved road maintenance	KEY	Shropshire Council, parish Council							The Parish Council has identified a need for improved road maintenance
Provision for pedestrians and	KEY	Shropshire Council							The Parish Council have identified a need for

Infrastructure or investment requirements and opportunities	Critical Priority or Key	Lead delivery partner	Other partners	Cost	Funding secured	Funding gap	Timescale for delivery	Potential funding sources	Notes
cyclists									improved provision for cyclists and pedestrians:- <ul style="list-style-type: none"> • Improve cycle networks • Footpaths need maintenance • Pavement between Creamore and Wem town

Weston under Redcastle Parish

Infrastructure or investment requirements and opportunities	Critical Priority or Key	Lead delivery partner	Other partners	Cost	Funding secured	Funding gap	Timescale for delivery	Potential funding sources	Notes
Housing and cohesive, sustainable communities									
Economic investment and opportunity									
Facilitation of ICT /broadband	KEY	Shropshire Council	BDUK Town and		£16.4 million across all of		2015		The Connecting Shropshire aims to

Infrastructure or investment requirements and opportunities	Critical Priority or Key	Lead delivery partner	Other partners	Cost	Funding secured	Funding gap	Timescale for delivery	Potential funding sources	Notes
technologies		A private sector delivery partner will be procured using the BDUK framework	Parish Councils		Shropshire (£8.2 Shropshire Council and £8.2 million from BDUK)				<p>provide a minimum of 2 Mbps to all of Shropshire and as much superfast broadband as possible.</p> <p>The project will deliver to those communities that are not going to get either basic broadband or superfast broadband under the private sector rollout.</p> <p>The Parish Plan has identified that improvements are needed to broadband provision as current provision is either slow or intermittent.</p>
Social and community infrastructure									
Environment and climate change									
Improvements to water pressure	PRIORITY	Severn Trent Water	Weston under Redcastle Parish Council						The Parish Council have identified a need for improvements to water pressure which remains a problem in the parish

Infrastructure or investment requirements and opportunities	Critical Priority or Key	Lead delivery partner	Other partners	Cost	Funding secured	Funding gap	Timescale for delivery	Potential funding sources	Notes
Hawkstone Mill and Red Castle, Hawkstone Park	KEY	Owner							Identified as heritage at risk. Integral part of heritage significance of the Park and contributes to tourism offer and visitor experience.
The Mount, motte castle	KEY								Identified as heritage at risk. Potential for improved management under a management plan, together with improved access and interpretation
Community Tree Scheme	KEY	Shropshire Council Development Services – Natural Environment)	Developers, Shropshire Council (Highways)	C£2640 per ha planted with tree whips. C£260 per new street tree.	£5000 to be shared throughout the council and provision of 10,000 trees		Ongoing	Shropshire Council Highways, Maelar Forest Nurseries, Whitchurch	Run an extensive Community Tree Scheme to provide opportunities to enhance the natural environment of the area. Costs include planting, stakes, tree guards and watering to establish trees over first 3 years.
Transport and accessibility									
Address speeding problems in the village	KEY	Weston under Redcastle Parish	Shropshire Council						The Parish Plan has identified that speeding remains a problem in the village despite

Infrastructure or investment requirements and opportunities	Critical Priority or Key	Lead delivery partner	Other partners	Cost	Funding secured	Funding gap	Timescale for delivery	Potential funding sources	Notes
		Council, Police							30mph signs.
Car park for the village hall	KEY	Weston under Redcastle Parish Council	Shropshire Council						The Parish Plan has identified a potential need for a car park for the village hall.

Whixall Parish

Infrastructure or investment requirements and opportunities	Critical Priority or Key	Lead delivery partner	Other partners	Cost	Funding secured	Funding gap	Timescale for delivery	Potential funding sources	Notes
Housing and cohesive, sustainable communities									
Economic investment and opportunity									
Facilitation of ICT /broadband technologies	KEY	Shropshire Council A private sector delivery	BDUK Town and Parish Councils		£16.4 million across all of Shropshire (£8.2 Shropshire		2015		The Connecting Shropshire aims to provide a minimum of 2 Mbps to all of Shropshire and as much

Infrastructure or investment requirements and opportunities	Critical Priority or Key	Lead delivery partner	Other partners	Cost	Funding secured	Funding gap	Timescale for delivery	Potential funding sources	Notes
		partner will be procured using the BDUK framework			Council and £8.2 million from BDUK)				superfast broadband as possible. The project will deliver to those communities that are not going to get either basic broadband or superfast broadband under the private sector rollout. The Parish Council has identified the need for broadband provision.
Social and community infrastructure									
Fire safety in new development	PRIORITY	Developers	Shropshire Fire and Rescue Service, Shropshire Council					Developers	Shropshire Fire and Rescue Service have identified the need for all new industrial development within the cluster to be sprinklered owing to known water supply issues in NW Shropshire.
Additional signposting and notice boards.	KEY	Whixall Parish Council							The Parish Council has identified the need for further signposting. In 2011, the parish Council purchased 2 noticeboards in 2011.

Infrastructure or investment requirements and opportunities	Critical Priority or Key	Lead delivery partner	Other partners	Cost	Funding secured	Funding gap	Timescale for delivery	Potential funding sources	Notes
Review of primary school places to ensure sufficient provision	PRIORITY	Shropshire Council (Learning and Skills)	Developers	Dependent upon extent and location of development	None	To be determined through SAMDev	Dependent upon developer's timescales	Developer contributions, LA Capital Programme	An assessment of the effect on school places locally has been made based on revised levels of development with delivery spread evenly over the Plan period. Any requirements to be determined through SAMDev, based on need. Some surplus capacity does exist, but improvements/ expansion of existing facilities may be required, dependent on SAMDev allocations.
Review of secondary school places to ensure sufficient provision	PRIORITY	Shropshire Council (Learning and Skills)	Developers	Dependent upon extent and location of development	None	To be determined through SAMDev	Dependent upon developer's timescales	Developer contributions, LA's Capital Programme	To be determined through SAMDev, based on need. Some surplus capacity does exist, but improvements/ expansion of existing facilities may be required, dependent on SAMDev allocations
Environment and climate change									
Upgrade Waste Water Treatment	CRITICAL	Severn Trent Water	Environment Agency						An assessment of the effect on the

Infrastructure or investment requirements and opportunities	Critical Priority or Key	Lead delivery partner	Other partners	Cost	Funding secured	Funding gap	Timescale for delivery	Potential funding sources	Notes
Works for Hollinwood									Wastewater Treatment Works has been made based on revised levels of development with delivery spread evenly over the Plan period. Whilst there is limited hydraulic capacity for additional development, there are no known physical constraints that would prevent additional capacity being provided at this treatment works. The timing of delivery will be taken into account as part of a phasing policy within SAMDev.
Upgrade Waste Water Treatment Works for Whixall	CRITICAL	Severn Trent Water	Environment Agency						An assessment of the effect on the Wastewater Treatment Works has been made based on revised levels of development with delivery spread evenly over the Plan period. This indicates that there is hydraulic spare

Infrastructure or investment requirements and opportunities	Critical Priority or Key	Lead delivery partner	Other partners	Cost	Funding secured	Funding gap	Timescale for delivery	Potential funding sources	Notes
									capacity for 50 additional dwellings.
Upgrade sewerage network	CRITICAL	Severn Trent Water	Developers	N/A	N/A	N/A	The sewer network is currently being reviewed by Severn Trent Water and will continue to be reviewed every 6 months as part of the water company's sewer network plans to allow issues to be addressed in a timely manner	Options are currently being appraised by Severn Trent Water as part of their capital investment programme.	An assessment of the effect on the sewer network has been made based on revised levels of development with delivery spread evenly over the Plan period. The majority of the area is not served by public sewers and there are no known capacity issues in areas served by public sewers. Given the small sewer networks, this area should be reassessed once the location of development is known.
Community Tree Scheme	KEY	Shropshire Council Development Services – Natural	Developers, Shropshire Council (Highways)	C£2640 per ha planted with tree whips.	£5000 to be shared throughout the council and		Ongoing	Shropshire Council Highways, Maelar Forest	Run an extensive Community Tree Scheme to provide opportunities to enhance

Infrastructure or investment requirements and opportunities	Critical Priority or Key	Lead delivery partner	Other partners	Cost	Funding secured	Funding gap	Timescale for delivery	Potential funding sources	Notes
		Environment)		C£260 per new street tree.	provision of 10,000 trees			Nurseries, Whitchurch	the natural environment of the area. Costs include planting, stakes, tree guards and watering to establish trees over first 3 years.

Transport and accessibility

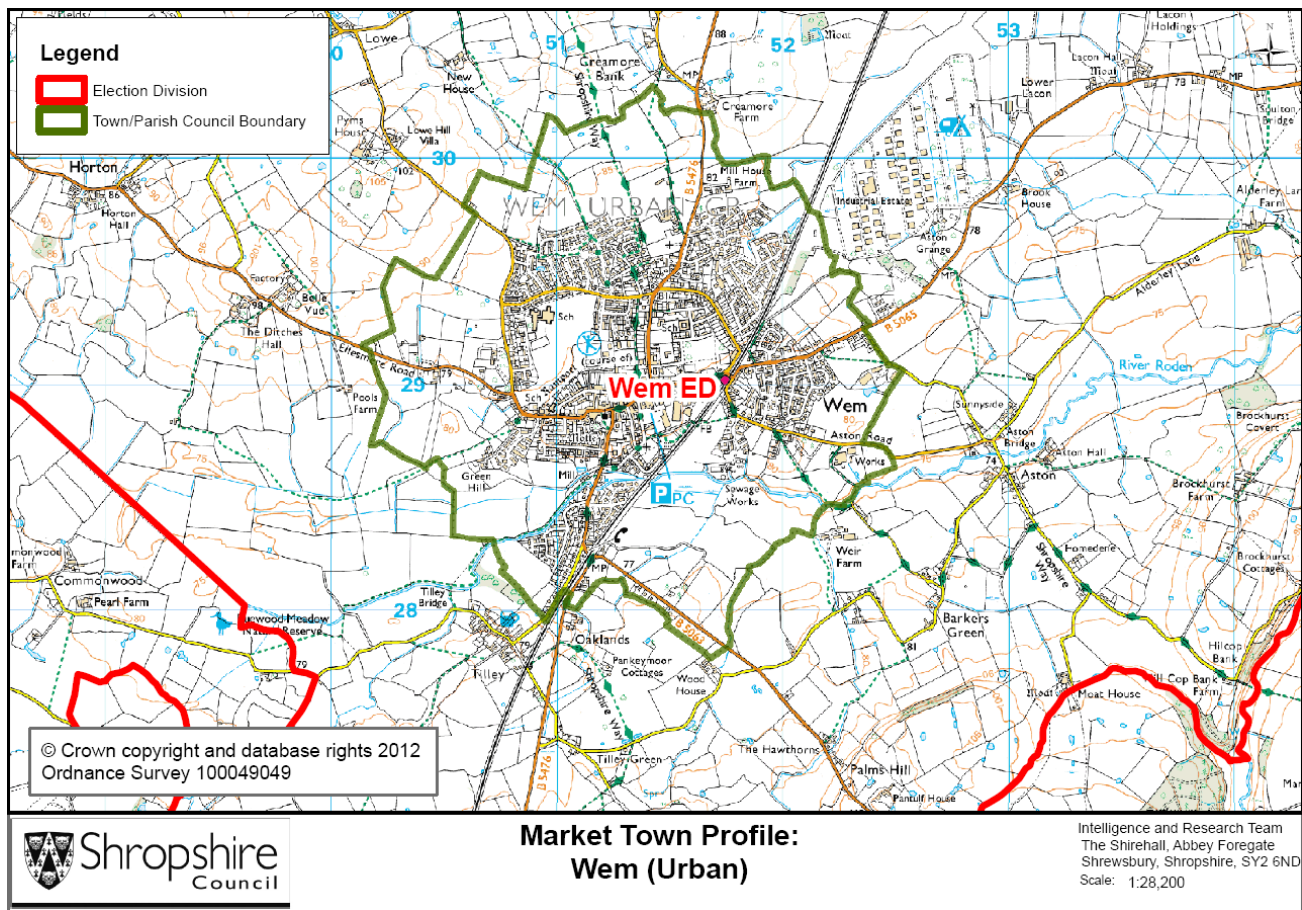
Local highway improvements, traffic management, parking provision and speed and safety management	PRIORITY	Shropshire Council (Highways)	Whixall Parish Council						The Parish Council has identified the need for highway improvements due to concerns over insufficient road signs and speed limits. Further assessment work required.
Improved provision for pedestrians	KEY	Whixall Parish Council	Shropshire Council						The Parish Council has identified the need to produce area walking maps and also further Quiet Routes.



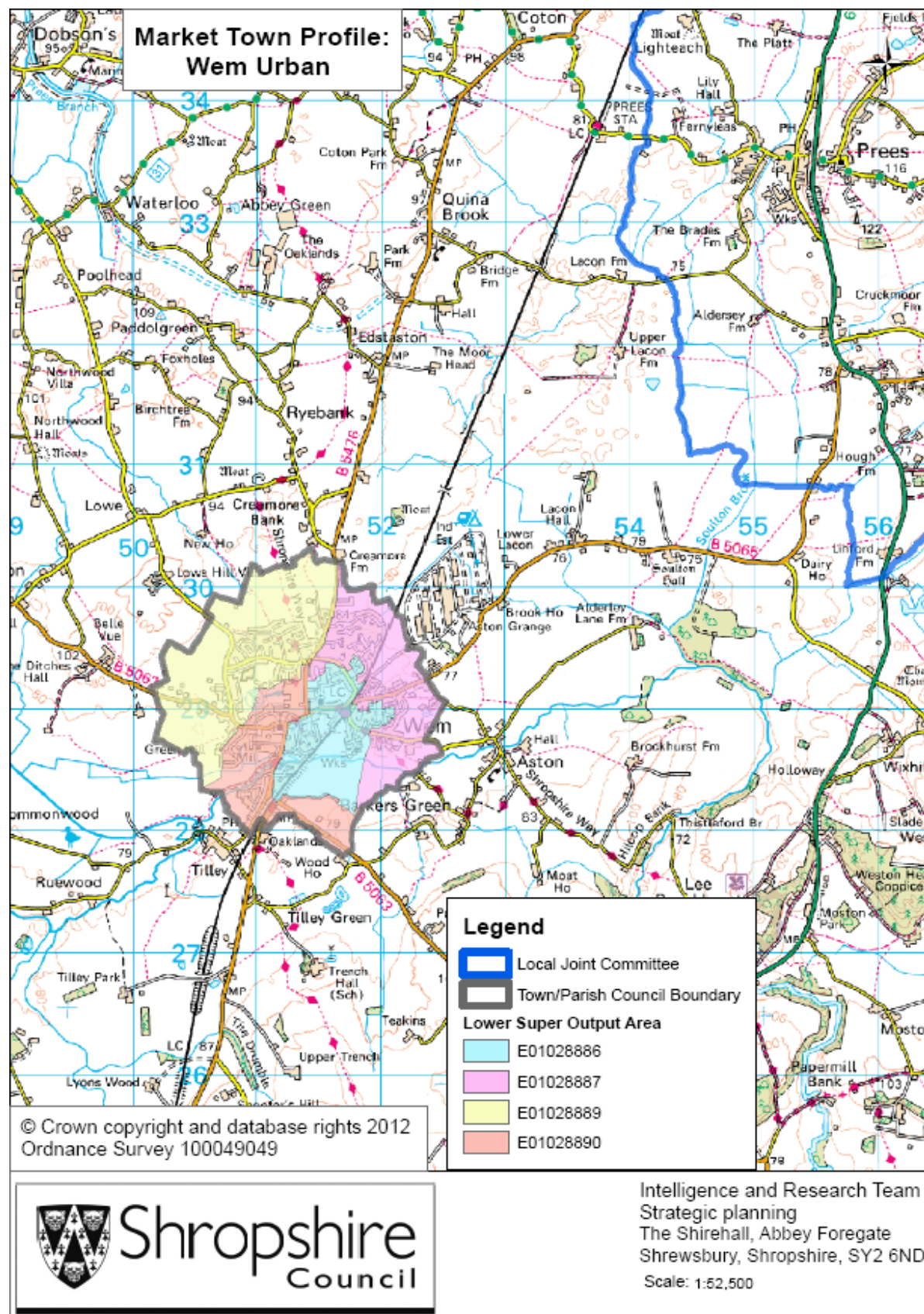
Appendix 1

Wem Market Town Profile: 2012

Context Map 1:



Context Map 2: Statistical Geographies



Social & Demographic Characteristics

Mid-2010 Population Estimates

	Males		Females		Total	
	No.	% Males	No.	% Females	No.	% Total
0-15	500	19	400	15	900	17
16-29	400	15	500	16	900	16
30-44	500	17	500	15	900	16
45-64	700	27	800	28	1,500	28
65+	600	22	1,900	65	2,500	45
Working age (16-64)	1,600	59	1,800	60	3,300	60
All ages	2,600	100	2,900	100	5,600	100

Source: Mid-2010 Population Estimates for Lower Layer Super Output Areas in England and Wales by Broad Age and Sex,

Office for National Statistics, © Crown Copyright 2012.

Notes: Population estimates have been made by combining the statistics of LSOAs that cover the area.

Estimates have been rounded to the nearest 100.

Business

- Wem supports a workforce of approximately 1,600 (BRES 2010, Office for National Statistics, © Crown Copyright 2012).
- A comparatively low proportion of Wem employees work in manufacturing (just 2.8% compared with 11.6% for Shropshire).
- A high proportion of employees work in retail or the public sector, with 15.9% working in health and 7.6% in public administration.

Breakdown of Employees by Sector 2010 (BRES, 2007 Standard Industrial Classification)

	Wem LSOAs % of Employees	Shropshire % of Employees
1 : Agriculture, forestry & fishing (A)	#	0.1
2 : Mining, quarrying & utilities (B,D and E)	#	1.2
3 : Manufacturing (C)	2.8	11.6
4 : Construction (F)	4.3	4.7
5 : Motor trades (Part G)	4.4	2.8
6 : Wholesale (Part G)	2.7	4.5
7 : Retail (Part G)	11.2	11.9
8 : Transport & storage (inc postal) (H)	5.6	4.1
9 : Accommodation & food services (I)	6.2	6.7
10 : Information & communication (J)	#	2.6
11 : Financial & insurance (K)	#	1.8
12 : Property (L)	#	1.0
13 : Professional, scientific & technical (M)	3.2	3.5
14 : Business administration & support services (N)	2.2	4.7
15 : Public administration & defence (O)	7.6	6.0
16 : Education (P)	#	10.1
17 : Health (Q)	15.9	17.5
18 : Arts, entertainment, recreation & other services (R,S,T and U)	3.5	5.1
Total (A-U)	100.0	100.0

Source: Business Register and Employment Survey 2010, Office for National Statistics, © Crown Copyright 2012.

Please note: Employees exclude voluntary workers, self-employed and working owners who are not paid via PAYE (Nomis, Office for National Statistics, © Crown Copyright 2012).

= figures have been subject to hard and soft suppression to avoid disclosure.

- There are in the region of 230 businesses in Wem, most of which employ 5 or less (Mint, 2012).
- Shropshire Council is a major employer. Other significant employers include:
 - Meres and Mosses Housing Association

The Economy

JSA Claimant Trends for Wem (February 2012) compared to county, regional and national averages

	Number of Claimants (Feb 2012)	% change over previous month	% change over last quarter	% change over same month in 2011	As % of working age population
Wem	115	6.5	9.5	7.5	3.5
Shropshire	5,350	2.92	9.77	6.55	3.0
West Midlands	175,134	1.20	6.45	6.91	5.1
Great Britain	1,623,211	2.29	8.26	9.84	4.1

Source: Claimant Count with Rates and Proportions, Office for National Statistics, © Crown Copyright 2012.

Note: The county, regional and national rates are the number of claimants as a percentage of the mid-2010 resident population aged 16-64.

Duration of unemployment in Wem compared to county, regional and national figures

	Less than 6 months		6-12 months		More than 12 months	
	No.	%	No.	%	No.	%
Wem	75	60.0	25	20.0	25	20.0
Shropshire	3,365	63.0	1,020	19.1	960	18.0
West Midlands	97,000	55.5	37,385	21.4	40,545	23.2
Great Britain	952,760	58.8	341,365	21.1	325,655	20.1

Source: Claimant Count – Age and Duration, February 2012, Office for National Statistics, © Crown Copyright 2012.

Age of unemployed in Wem compared to county, regional and national figures

	24 and under		25-49		50+	
	No.	%	No.	%	No.	%
Wem	30	27.3	65	59.1	15	13.6
Shropshire	1,670	31.2	2,755	51.5	925	17.3
West Midlands	54,945	31.4	94,065	53.8	25,930	14.8
Great Britain	489,070	30.2	879,840	54.3	250,865	15.5

Source: Claimant Count – Age and Duration, January 2012, Office for National Statistics, © Crown Copyright 2012.

Worklessness

Current DWP Benefit Claimants claiming out of work benefits (August 2011)

	Wem % (1)	Shropshire % (2)	West Midlands % (2)	Great Britain % (2)
Job Seekers	3.2	2.7	4.8	3.8
Incapacity benefit/ Severe Disablement Allowance	4.8			

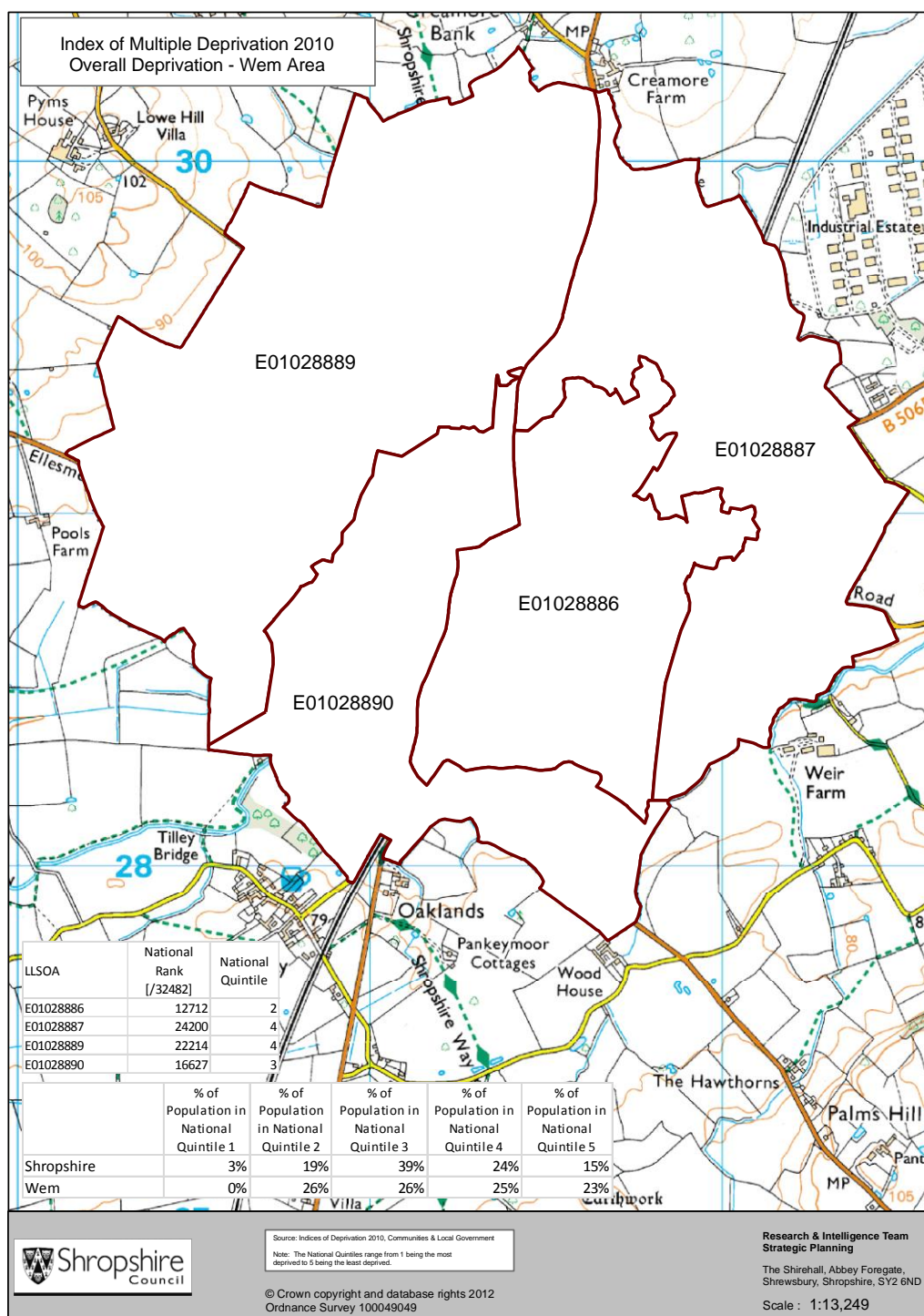
Lone parents (Income Support Statistical Group)	1.2	0.9	1.7	1.5
Out of work benefits	11.1	9.1	13.8	12.3

Source of DWP Benefit Claimant Statistics: Office for National Statistics, © Crown Copyright 2012.

Rate (%) note: The rate is the number of claimants as a percentage of the total resident working age population (aged 16-64).

- (1) Source of population estimates (used for calculation of the Market Town rate): Mid-2010 Population Estimates for Lower Layer Super Output Areas in England and Wales by Broad Age and Sex, Office for National Statistics, © Crown Copyright 2012.
- (2) Source of population estimates (used for calculation of the County, Regional and National rates): Estimated Resident Population Mid-2010 by Single Year of Age and Sex, Office for National Statistics, © Crown Copyright 2012.

Deprivation



Housing and Households

Total number, type and size of dwellings/households in Wem Tenure

	Market Town		Shropshire
	No.	%	%
Total Households	2,308	100	100
No. of households who are:-			
Owner Occupiers	1,748	75.7	73
owns outright	938	40.6	35
owns with a mortgage or loan	805	34.9	37
shared ownership	5	0.2	1
Rent Privately	164	7.1	9
Rent from a local authority	247	10.7	10
Rent from housing association / registered social landlord	81	3.5	4
Rent from other, i.e. employer, friend, relative	68	2.9	4

Source: Table TE01 Tenure, 2001 Census, Office for National Statistics, © Crown Copyright 2012.

Type and Size

	Market Town		Shropshire
	No.	%	%
Total dwellings (household spaces)	2,386	100.0	100
Dwellings (household spaces) with residents	2,308	96.7	96
Vacant dwellings	66	2.8	3
Second residence / holiday accommodation	12	0.5	1
Detached	1,009	42.3	41
Semi-detached	713	29.9	34
Terraced	379	15.9	16
Purpose built block of flats or tenement	198	8.3	5
Flats, maisonettes or apartments in commercial buildings	43	1.8	1
Part of a converted or shared house (including bed-sits)	44	1.8	2
Caravan or other mobile or temporary structure	0	0.0	1
Unshared dwellings (household spaces)	2,342	98.2	98

Source: Table D01 Dwellings, 2001 Census, Office for National Statistics, © Crown Copyright 2012.

Wem House prices (Land Registry 2007-2009, rounded to the nearest whole number)

Figures in £	Average (Mean) Price Paid	Median Price Paid	Lower Quartile Price Paid	Upper Quartile Price Paid
2007	170,379	156,000	125,000	198,500
2008	160,997	148,000	125,000	180,000
2009	157,251	150,000	125,000	195,000

Source: Price Paid Data, Land Registry, © Crown Copyright 2012.

Monthly rental cost 2009 (Rightmove dataset, rounded to the nearest whole number)

Figures in £	Average (Mean) Rent Per Month	Median Rent Per Month	Lower Quartile Rent Per Month	Upper Quartile Rent Per Month
Wem	562	550	480	595

Source: © 2012 Rightmove.co.uk.

Wem Household income levels (Income X Dataset, rounded to the nearest whole number)

Figures in £	Average Income	Median Income	Lower Quartile Income	Upper Quartile Income
2009	28,529	25,927	17,255	38,333
2010	29,863	24,606	16,711	39,631

Source: Income X, © 2012 Acxiom Corporation.

Development Trends

Amount of dwellings built in Settlement from 2006-2011

	2006-2007	2007-2008	2008-2009	2009-2010	2010-2011	Total
Settlement Name	6	6	73	49	47	181

Source: Table 24, Development Trends Report: Shropshire Report 2006-2011, Shropshire Council 2012.

Number of outstanding permissions and allocations at April 2011

	Permissions	Allocations	Total
Settlement Name	174	0	174

Source: Table 37, Development Trends Report: Shropshire Report 2006-2011, Shropshire Council 2012.

Retail Development: amount of floorspace (sqm) completed – Classes A1 (shops), A2 (financial and professional services) & A3 (restaurants and cafes) and A4 (drinking establishments) & A5 (hot food takeaways) 2006-2011

	2006-2007	2007-2008	2008-2009	2009-2010	2010-2011	Total
Settlement Name	0	0	57	0	92	149

Source: Table 43, Development Trends Report: Shropshire Report 2006-2011, Shropshire Council 2012.

Outstanding retail floorspace (sqm) as at April 2011

	Floorspace (sqm)
Settlement Name	62

Source: Table 46, Development Trends Report: Shropshire Report 2006-2011, Shropshire Council 2012.

Shops Survey

Types of shops surveyed in 2009

	Shops by Type		Gross Floorspace
	No.	%	%
Catering	14	16.7	10.0
Comparison	36	42.9	37.7
Convenience	9	10.7	23.8
Retail Services	8	9.5	4.2
Services	7	8.3	8.3
Vacant	10	11.9	16.0
Total	84	100.0	100.0

Source: Shops Survey 2009, Shropshire Council 2012.

Transport & Infrastructure

Journey to Work

	% of people aged 16-74 in employment	
	Urban Area	Shropshire
All People Aged 16-74 in Employment	100.0	100.0
People Who Work Mainly at or From Home	9.4	13.4
Underground; Metro; Light Rail; Tram	0.1	0.1
Train	1.6	0.8
Bus; Mini Bus or Coach	1.4	2.6
Motorcycle; Scooter; Moped	1.2	0.9
Driving a Car or Van	58.9	59.0
Passenger in a Car or Van	4.8	6.3
Taxi or Minicab	0.4	0.3
Bicycle	6.6	3.5
On Foot	14.9	12.6
Other	0.6	0.6
Public Transport	3.2	3.5
Motor Vehicle	65.3	66.5

Source: Table T01 Journey to Work, 2001 Census, Office for National Statistics, © Crown Copyright 2012.

Notes:

1. Includes Train, Underground; metro; light rail; tram, bus; Mini Bus or coach
2. Includes Motorcycle; Scooter; moped, Driving a car or van, Passenger in a car or van, Taxi or minicab

Car Ownership (Percentage of Total Households)

Percentage of cars or vans in Urban Area.	% of total households	
	Urban Area	Shropshire
All Households	100.0	100
No Car	22.0	17.7
One Car	51.2	44.3
Two Cars	21.9	29.4
Three Cars	3.6	6.5
Four or More Cars	1.3	2.1
All Cars and Vans in the Area	111.7	132.0

Source: Table C01 Cars or Vans, 2001 Census, Office for National Statistics, © Crown Copyright 2012.

Description of transport within Wem

- There is a railway station that is managed by Arriva Trains Wales; the station has direct trains to stations including Shrewsbury and Crewe.
- Three main roads connect Wem to other settlements: B5476, B5063 and B5065.
- There are several cycle routes that pass through Wem.

Source: Shropshire Council GIS Layers, 2012; Arriva Trains Wales, © Copyright 2012

Natural and historic environment

Designation	Number	Sum of Area	Name
Conservation Areas	1		Wem
Public Rights of Way (ROW)		around 4.6km	
Millennium Greens	1		Wem Millennium Green
Long Distance Routes	1		Shropshire Way
Listed Buildings	90		Include Hazlitt House - 17 Noble Street, Church of St Peter and St Paul and Park House - Park Road

Source: Shropshire Council GIS Layers.

Information about Wem available online:

- Market Towns Toolkit Event Materials:
<http://www.shropshire.gov.uk/factsfigures.nsf/open/B2710528DA81C99C802578D40037D6DC>
- Nomis Profiles (Labour Market statistics): <https://www.nomisweb.co.uk/>
- LocalView maps of Shropshire, showing population estimates and Index of Multiple Deprivation 2010:
<http://www.shropshire.gov.uk/factsfigures.nsf/open/F8C76E633C577BE8802570A0004CAB30>
- 2001 Census Profiles:
<http://www.shropshire.gov.uk/factsfigures.nsf/open/2ADEBD903F793BA980257479004995EE>
- Development Trends Report:
<http://www.shropshire.gov.uk/factsfigures.nsf/open/9E4117D110651F1E802574EA0033148B>
- Shops Survey Information Sheet:
<http://www.shropshire.gov.uk/factsfigures.nsf/open/C4EB69C9C7C8ECFD80256CC400419A97>