

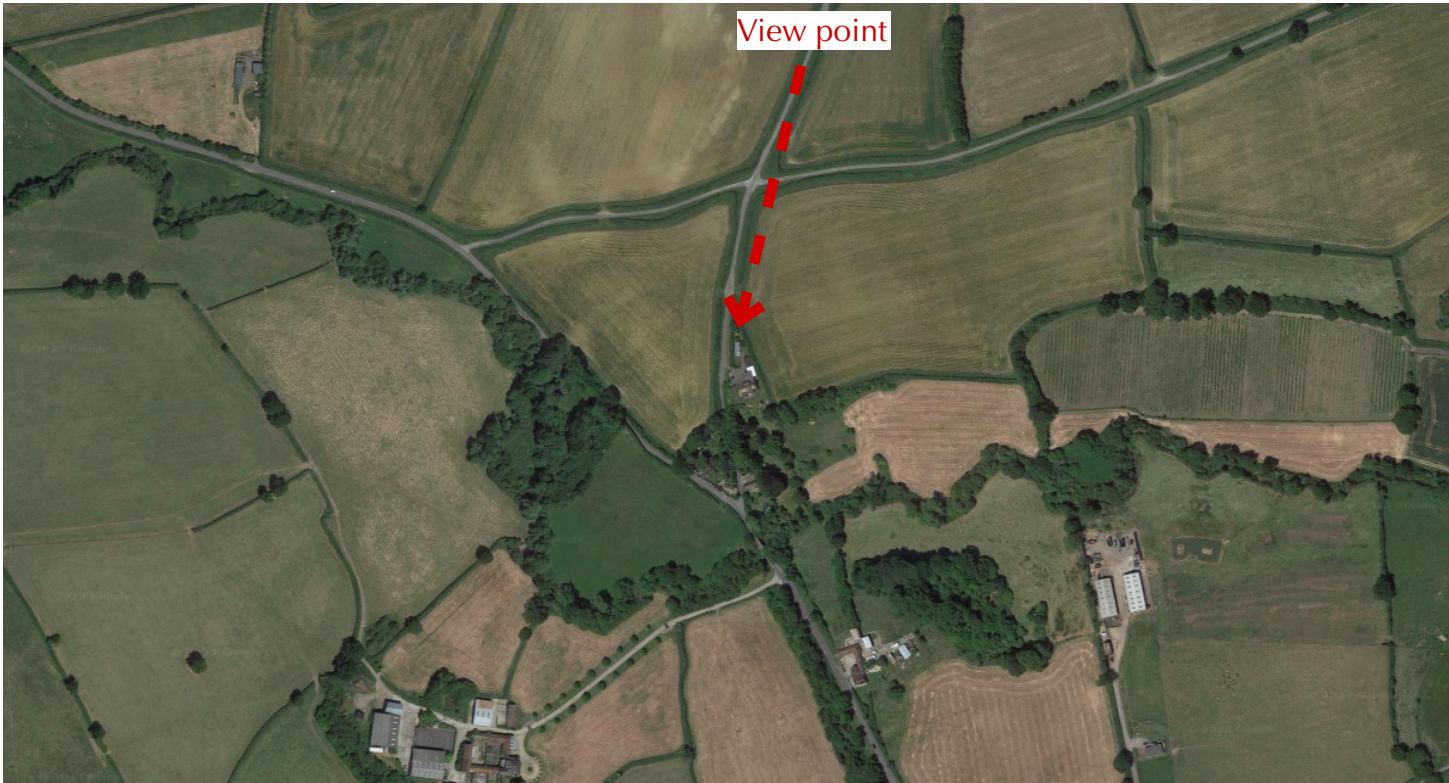




Before



After



The following context images highlight how the external aesthetic improvements are largely un-seen from the surrounding context, creating no effect on the local area.





Before



After







Before

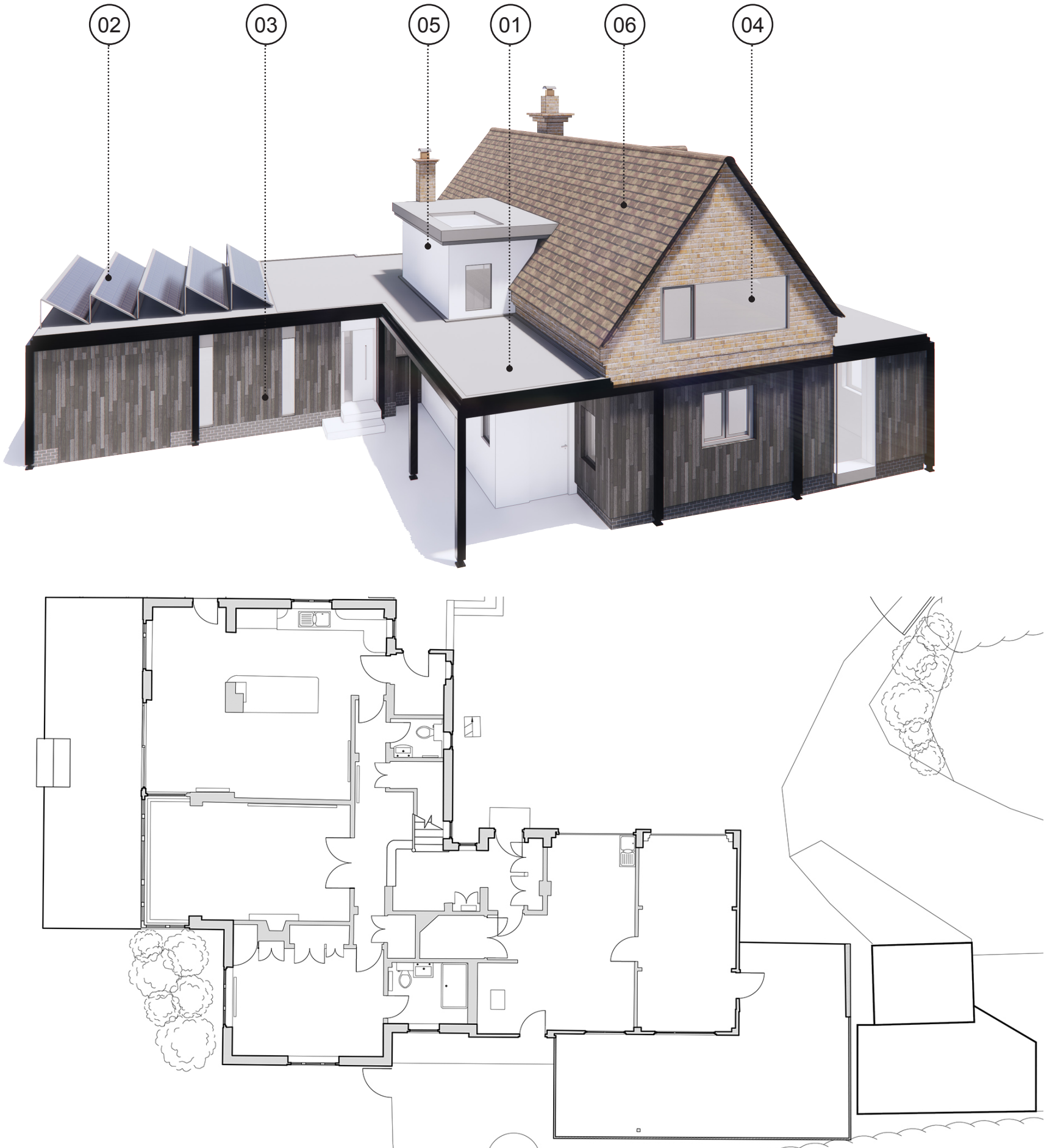


After









As well as the internal layout improvements and external aesthetic upgrade various measures are being made to notably improve the property's environmental performance and increase its sustainability credentials. These measures include:

- 01 Re covering of roof materials to improve water-tightness and insulation performance
- 02 Introduction of photovoltaic panels to roof to generate sustainable electrical energy
- 03 Overcladding the existing garage space with eco friendly breathable external wall insulation and floor insulation to space improving thermal performance.
- 04 Replacement window preventing air leakage and internal wall insulation to improve thermal performance at gables.
- 05 External wall insulation to walls shown as white render to improve thermal performance
- 06 Improvement to existing loft insulation
- 07 Replacement of oil fuelled boiler with air source heat pump





- 01 Main House
- 02 Garage
- 03 Outbuilding
- 04 Rear Garden
- 05 Wider Garden

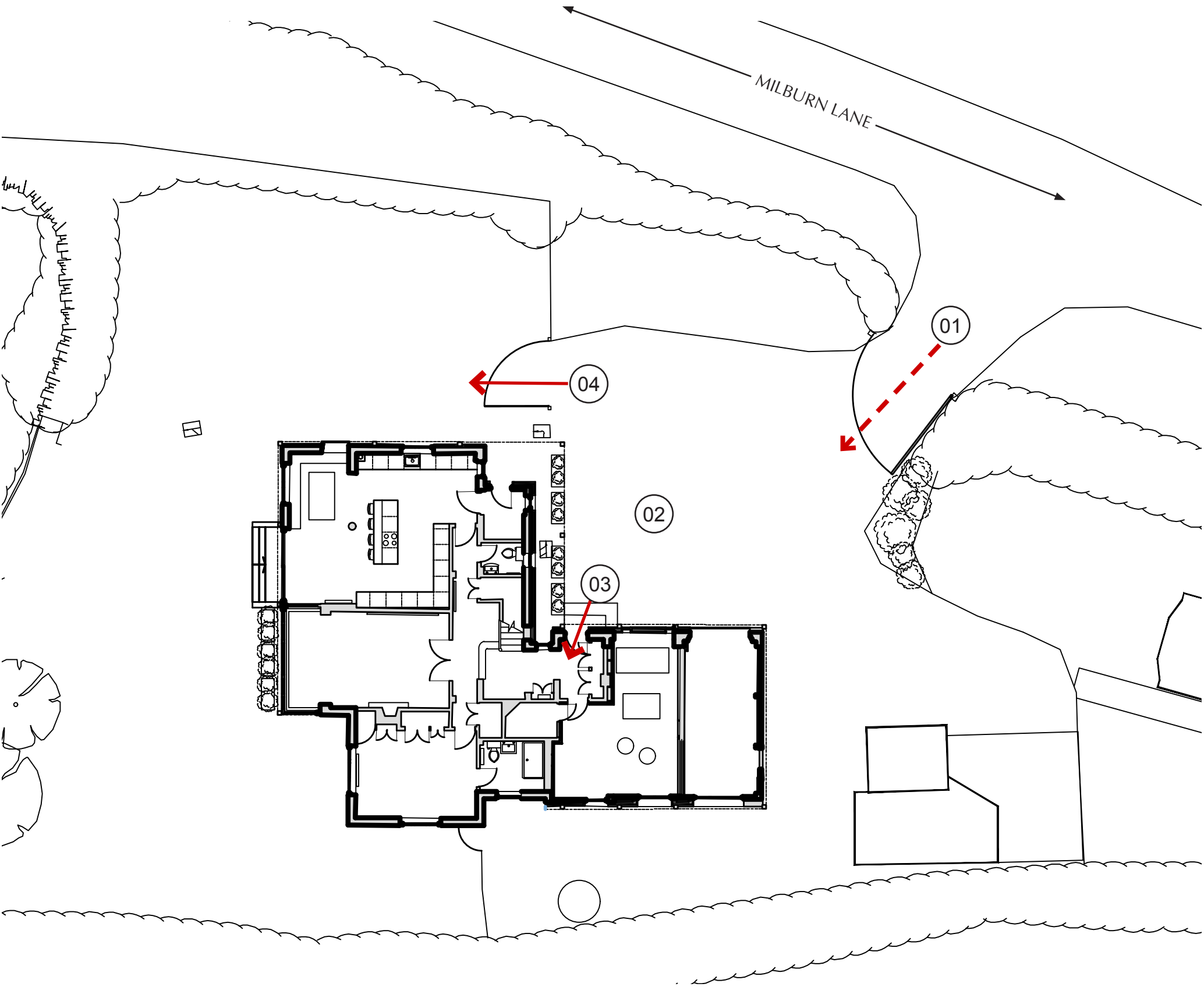
Existing hedgerow unaffected by works and maintained

Closest existing trees far from property to be maintained and unaffected by works









- 01 Existing access through driveway and gate unaffected by works
- 02 Existing parking forecourt maintained and provision of parking numbers unaffected
- 03 Main access to house maintained but highlighted by new colonnade and new front door
- 04 Access to garden maintained



