



Speldhurst Parish Council

Working for the whole community

NEWSLETTER

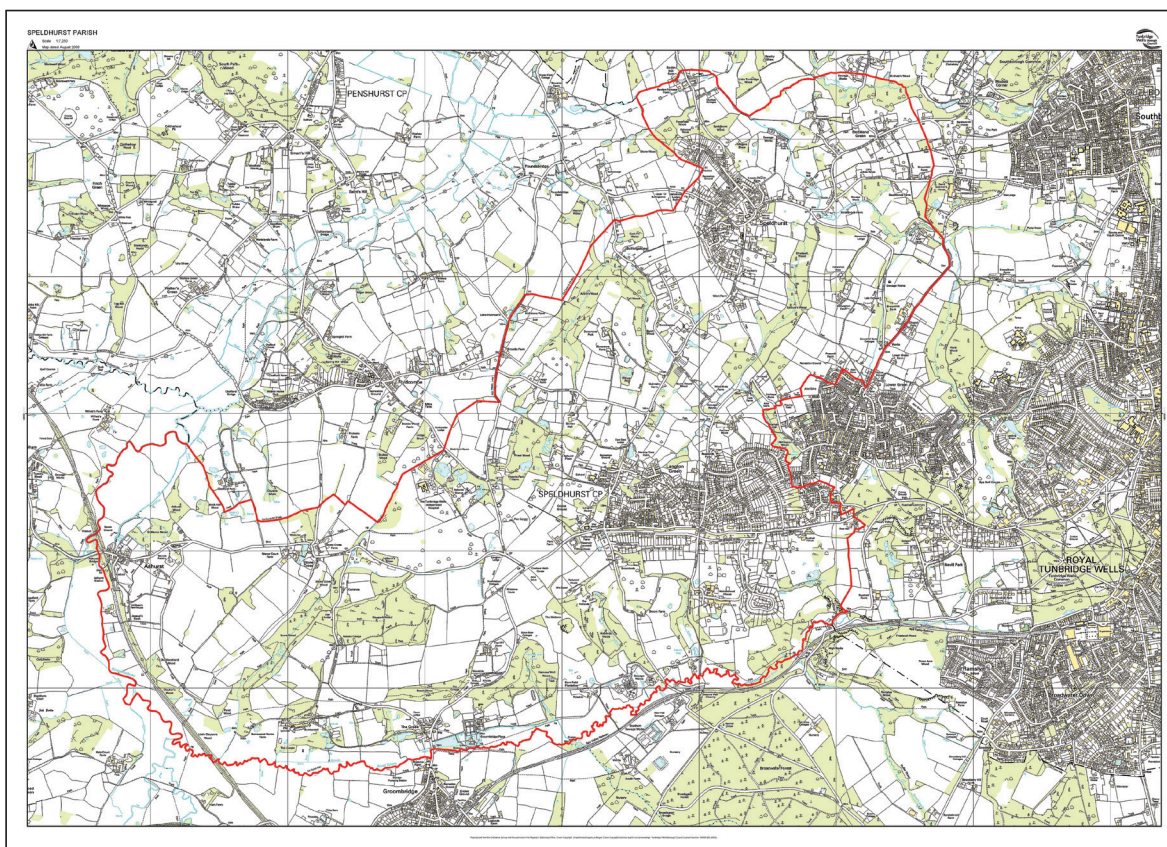
Council matters

This is an excerpt from an article printed in Speldhurst News in April. We thought that an explanation of who we are and what we do would be helpful to most people who are unaware what a Parish Council is and

does. Further information will appear in our next edition.

Speldhurst Parish Council was formed in 1894 by a Local Government Act which separated the administration of the parishes from the Church and made them a civil responsibility. At that time Speldhurst was the largest village in the area.

There are about 9,500 Parish and Town Councils in England and Wales ranging from populations of 300 in a rural parish to Sutton Coldfield, the largest Town Council with 95,000. The population of Speldhurst Parish is just under 5,000 with 3,800 registered electors and Langton Green now forms the largest village with 2,700 electors.



Maintaining Council land

Speldhurst Parish Council's main asset is the Recreation Ground in Langton Green, which is owned and maintained by the Council. Speldhurst Recreation Ground is run by a Trust, as are the three Village Halls in the Parish (Langton Green, Speldhurst and Ashurst). The Council owns and maintains other pockets of land throughout the parish which include The Green in Groombridge, Pocket Park in Speldhurst, small areas of

land in Roopers, and newly acquired land in The Boundary, Langton Green.

Recently our Groundsman took on the massive job of cutting back the overgrown areas in Pocket Park and he has also done a lot of clearing around the pond in The Boundary and other areas.

Diary date

The next Open Meeting of the Parish Council will take place on Monday 9th October at Speldhurst Village Hall at 7.30pm. Please come along to meet your Councillors for a social drink and to hear about the work that the Council has been up to over the past year. The meeting is timed to give residents a chance to bring any issues to the attention of Councillors before decisions are made about the budget for the next financial year.

Highways

20 MPH – an update

The proposed 20mph zone for Speldhurst is progressing and the first phase is a letter drop by Kent County Council Highways consulting affected residents who have until 3rd July to register their support or objection to the scheme. If there are no objections the scheme should be implemented soon after.

The proposal in Langton Green is different. KCC have recommended that 20mph is advisory rather than enforceable and that it should be active only during school drop off and pick up times, which probably means 8.15am – 9.15am and 2.30pm – 3.45pm. Work continues on this part of the project which is slightly complicated because the signs need an electric source rather than using solar power.

SIDs

The Parish Council took the decision to replace the two defunct interactive speed devices in Ashurst and Groombridge with mobile speed indicator devices that can be moved from location to location around the villages. Residents will have noticed that the first SID has arrived and is now in use. A second is on order and will be up and running soon.



Gateways

By the time this newsletter is delivered the initial four gateways should all have been installed (one each in Langton Green, Speldhurst, Groombridge and Ashurst). This is part of a programme of trying to make motorists more aware that they are entering our villages and more will be installed if these are considered to be worthwhile.

Speedwatch

SPC has purchased new equipment and has a number of trained volunteers but more are definitely needed. If you are concerned with speeding in your Parish why not join our group?

Roadkill

If an animal is killed on the road it is the duty of KCC Highways to remove it. If, however, it is on land by the side of the road, it is the land owner's responsibility. Animals about the size of a badger or larger can be reported to the clerk or use the Roads and Transport section of the KCC website.

Footpaths

Len Cooper, our Groundsman has started clearing some footpaths/twittens. Please report any overgrown footpaths to the Clerk and we will endeavour to make them passable.

REMINDER

The Parish Council has been keeping a record of the number of accidents in the parish over the last couple of years and relies on information from residents, so please keep us informed. We can lobby for road improvements where they are needed, but without the accident statistics we cannot mount a successful campaign

Fly tipping

If you see any fly tipping there is a new way this can be reported. If you have a smart phone download the app "Country Eye"



Langton Green Pavilion

The pavilion has won Construction Project of the Year – an award given in the Kent Excellence in Business Awards 2017



Now serving breakfast and lunches and open from 9am till 4pm Tuesday to Friday

UKPN



Would you need extra support if you had a powercut? Register or ask someone to register you at the website <http://www.ukpowernetworks.co.uk/internet/en/power-cuts/priority-services-during-a-power-cut/> or call 0800 169 9970 (free)

Vulnerable people include (for example) those dependent on medical equipment, chronically ill, have a disability, visually impaired or blind, hearing impairment or deaf, elderly, nursing or residential home or with a young baby in household.

FOR REGULAR UPDATES ON ALL OUR ACTIVITIES GO TO OUR WEB SITE
www.speldhurstparishcouncil.gov.uk

Speldhurst Parish Council

Neil Barrington-Johnson
(Chairman)
Harry Allen
Joanna Horne
Lynn Jeffreys

John Kerby
Katrina Lyle
George Mercieca
Rupert Milner
(Vice Chairman)

Trevor Parker
Joy Podbury
Judy Price
Julia Soyke
David Turner

This newsletter will be available, as will future issues, on the Parish Council web site.

All enquiries to the Parish Clerk; Chris May on (01892) 862927 or at clerk@speldhurstparishcouncil.gov.uk