

ECC May Report 2025

Devolution and Local Government reorganisation (LGR)

Work is continuing of both Devolution and Local Government reorganisation (LGR).

Devolution will see an Elected Mayor who will be responsible for the Greater Essex that currently include Essex County Council, Thurrock, and Southend Councils. Political parties are expected to announce their chosen candidates in early summer.

On LGR evidence gathering is now well under way and this work will form the basis of the formal submission later in September this year, and how many Unitary Authorities will be created from the current 15 Essex Councils that also include Southend and Thurrock.

Although a potential total of 5 new Combined Authorities is being promoted by some of the Essex Leaders, nothing has yet been agreed, and it could be that two or more options will be submitted to Government; I will obviously be circulating updates as soon as there is something to share.

This month my report contains more lived experiences, with several short video clips by those who receive services delivered by ECC, or by their partners, or their commissioners, which I hope will give a more in-depth view of what Essex County Council does for its residents.

Welcome to our Extraordinary Essex

EXTRAORDINARY ESSEX

It's people that make us

Essex is an extraordinary county for many reasons. We're proud to serve the people and communities that live, work and study here. They are what make our county truly unique.

Over the past three years, we've achieved many successes. In the coming months we'll demonstrate the real impact we've had on residents and communities through the commitments outlined in [Everyone's Essex](#) – our plan for improving the county.

We'll shine a spotlight on the breadth of work we do including the lesser-known areas that make a real difference to people's lives every day.



'Don't Fight The Land That Feeds You' Marley Karazimba - Essex County Council

Click this link [Watch the 'Don't Fight The Land That Feeds You' film](#) on YouTube. The white start button above doesn't work.

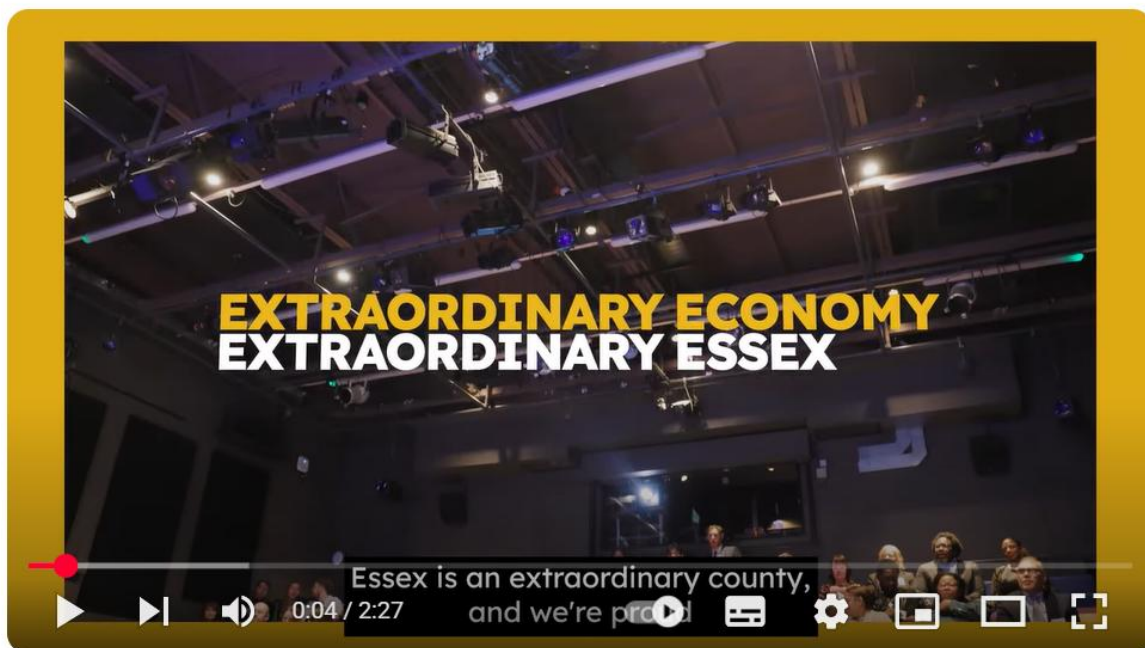
We're excited to announce the launch of Marley Karazimba's new project, supported by the Extraordinary Essex Art Commission. 'Don't Fight The Land That Feeds You' is a captivating new film by Marley, documenting the people of Essex and their deep connection to the land. From regenerative agriculture projects to initiatives promoting the mental health benefits of growing, this film beautifully captures the essence of our community.

Join us for a special event on Friday 2 May at The Commons Café and Community Venue in Colchester. Enjoy great food and a live performance by The King Driscolls.

Spotlight on the people that make our county extraordinary

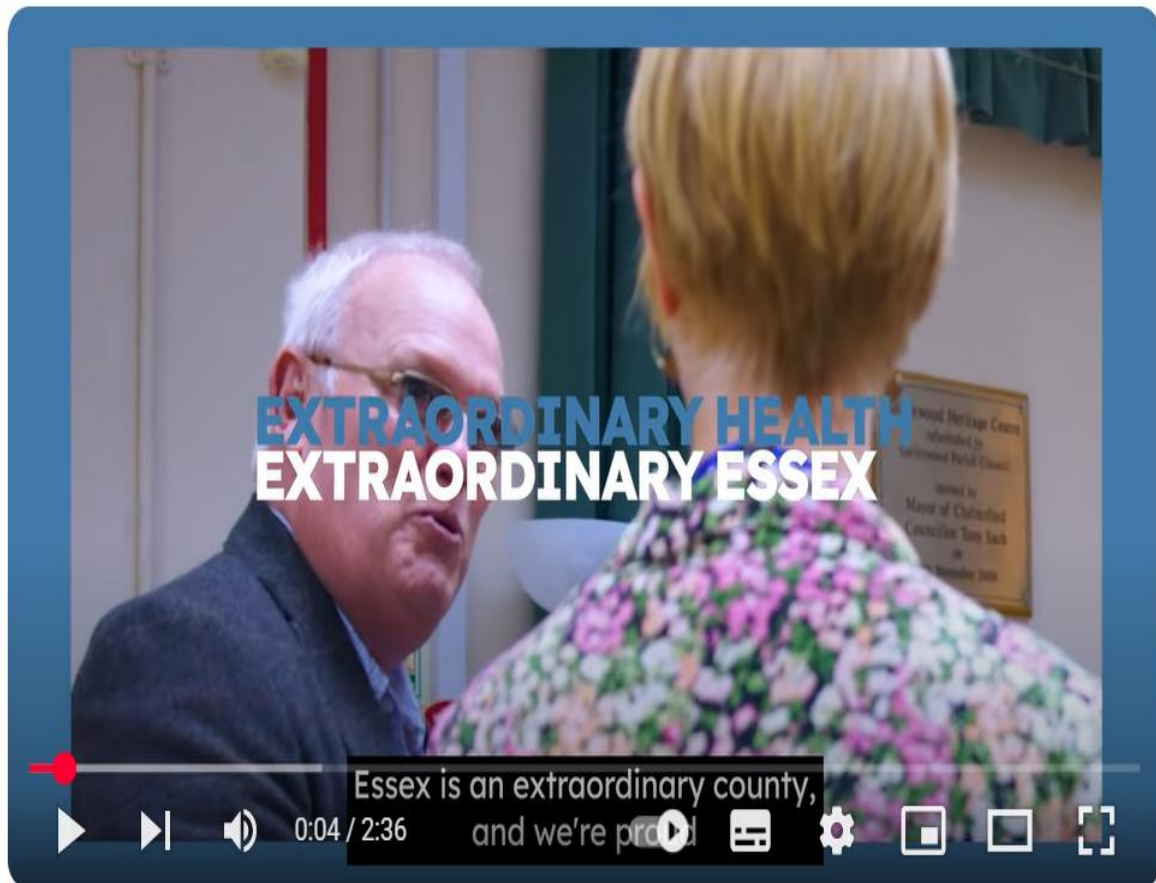
Essex is an extraordinary county and we're proud to serve the people and communities that live, work and study here. Over the past 12 months we've been visiting a range of people and communities to shine a light on the people that make our county extraordinary. Because after all, People Make Us.

The Apprenticeship Hub supports school leavers to grow and develop their career, while employers can boost their business with new talent. We Rise is helping young people to remove the barriers that can prevent them from reaching their career goals and aspirations.



[Watch the full Extraordinary Essex economy video](#) on YouTube. The white start button above doesn't work.

A range of our services support residents' health and wellbeing across Essex, for example our Adult Social Care team. Part of the team's role is to find technology and equipment that can help people with care needs stay independent.



[Watch the full Extraordinary Essex health and wellbeing video](#) on YouTube. The white start button above doesn't work.

New environmentally friendly schools are helping to reduce carbon emissions and to build a greener, more sustainable future for Essex. The Bikeability programme teaches young people valuable road safety skills, building independence and confidence.



Extraordinary Essex, spotlight on environment - Essex County Council

Watch the full [Extraordinary Essex environment video](#) on YouTube. The white start button above doesn't work.

A range of our services support children and families across the county from Educational psychologists to Independent Visitors. .



[Watch the full Extraordinary Essex children and families video](#) on YouTube. The white start button above doesn't work.

Educational Psychologists

Educational Psychologists support the learning, development and wellbeing of children and young people in school settings.

Karen, a headteacher at Kings Road Primary School said *“Educational psychologists are so valuable to us in school. They bring expertise into the school, which even the most experienced teachers don’t have. They give us the opportunity to think differently about a child or a group of children”*.



Extraordinary Essex, Educational Psychologists - Essex County Council

[Watch the full Educational Psychologist video](#) on our Extraordinary Essex channels. The white start button above doesn't work.

Harlow Futures

Harlow Futures is a Levelling Up programme that inspires young people in Harlow to be ambitious about their futures. The first phase focused on mental health and wellbeing to help young people build mental health resilience. The second phase of the project, working with local Early Years providers to improve

children's speech, language and communication. It is hoped this will help them achieve positive outcomes later in life.

Chrissy, a Home From Home, SENCO & Safeguarding Lead said: *"I think what we do here as a nursery is extraordinary because going above and beyond is not the exception it's the norm"*.



Extraordinary Essex, Harlow Futures - Essex County Council

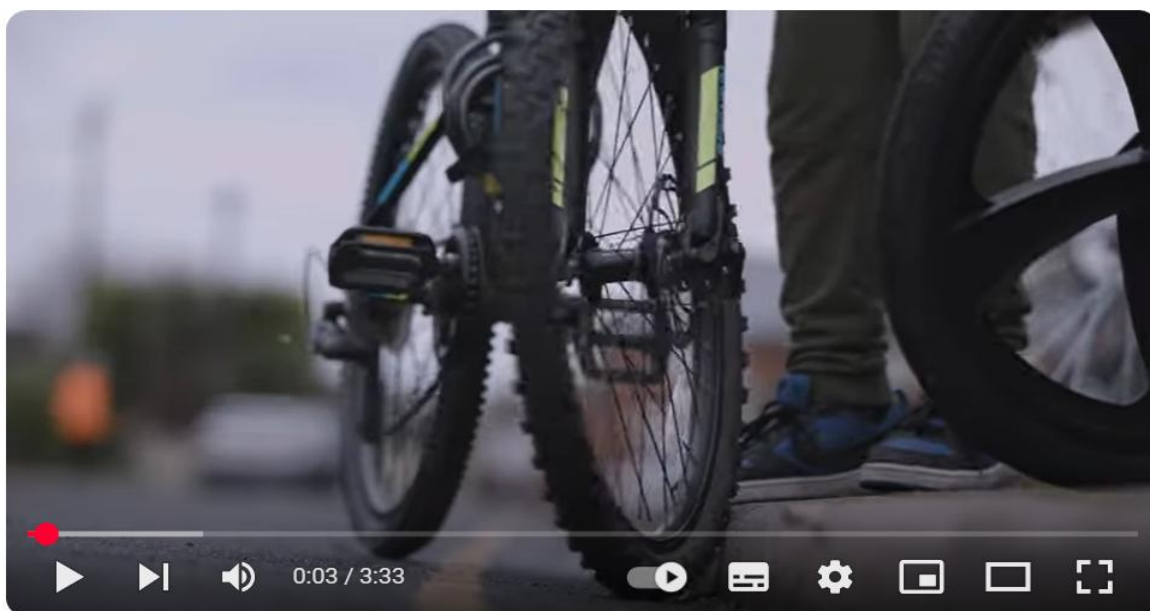
[Watch the full Harlow Futures video](#) on our Extraordinary Essex channels. The white start button above doesn't work.

Sustainable Transport Team

Bikeability is the government's national cycle training programme. It gives young people practical skills and confidence to safely cycle on roads. Qualified, expert instructors deliver training all year round. The cycle training programme enables year 5 and 6 pupils to develop a life skill in a safe and fun environment.

Kelvedon St Mary's Academy has offered the Bikeability course to year 6 children for many years. Shelley, a year 6 teacher at the Academy summarises the value of the cycle training programme for her students:

"It's such a valuable life skill particularly children at this stage where they're going to be moving on to secondary school and becoming more independent. It promotes children's self- confidence, their personal safety and their independence so it's important they have the opportunities to develop all of those skills and Bikeability does that."



Extraordinary Essex, Bikeability - Essex County Council

[Watch the full Bikeability video](#) on our Extraordinary Essex channels.

Inclusive Dementia Communities

We recently spoke to Melanie the Integrated Dementia Commissioner at Essex County Council at the launch of the Inclusive Dementia Communities. The event brought together people that are living with dementia, families of people that are affected by dementia and organisations and businesses that have made changes to support people with dementia and enable them to continue living their lives.

Lisa a Community Development Coordinator at Alzheimer's Society, summarised the aims for the Inclusive Dementia Communities:

"Part of the scheme is to ensure that all the awareness is out there for different organisations and services so that we can ensure we're offering those safe environments for people"



Inclusive Dementia Communities, Extraordinary Essex - Essex County Council

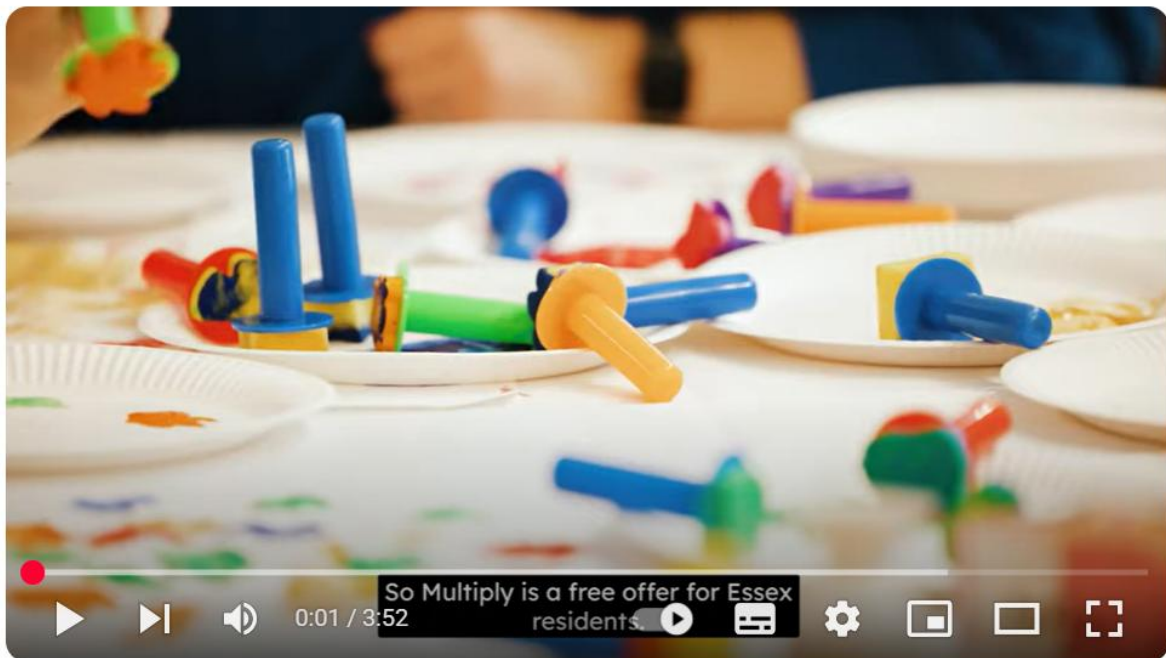
Watch the full [video on Inclusive Dementia Communities](#) on our Extraordinary Essex channels. The white start button above doesn't work.

The Multiply programme

Essex Multiply courses offered a diverse range of learning options to fit individuals learning preferences and schedule. This was delivered in either bite-sized courses to in-depth learning for formal qualifications. Over 10,000 residents have benefited from the Multiply scheme.

An awards ceremony was held to celebrate the achievements of Multiply in Essex. Craig Elliot, Skills and Development Manager at Essex County Council said *"We've certainly demystified maths, and we've also made participation in*

learning something that people don't fear. That's been the success of what we've been doing."



Extraordinary Essex, Multiply Programme - Essex County Council

[Watch the highlights from the Multiply event video](#) on our Extraordinary Essex channels. The white start button above doesn't work.

Essex Apprenticeship Hub

The apprenticeship hub supports school leaders in Essex to find and secure apprenticeship opportunities. They offers sessions on completing apprenticeship job applications and learning interview techniques.

Apprenticeships are a great way for businesses to boost their performance and efficiency by developing their employees' skills and knowledge. The Essex Apprenticeship Levy Transfer Service helps large businesses to transfer up to 50% of their unspent apprenticeship levy to support other businesses, to cover their apprenticeship training costs.

Hannah is an Employment & Skills Advisor at Essex County Council. She describes apprenticeships as:

“A fantastic way for individuals to earn while they learn, gaining valuable skills and knowledge in a specific job role.”



Extraordinary Essex Apprenticeships, Colchester United Community Foundation - Essex County Council

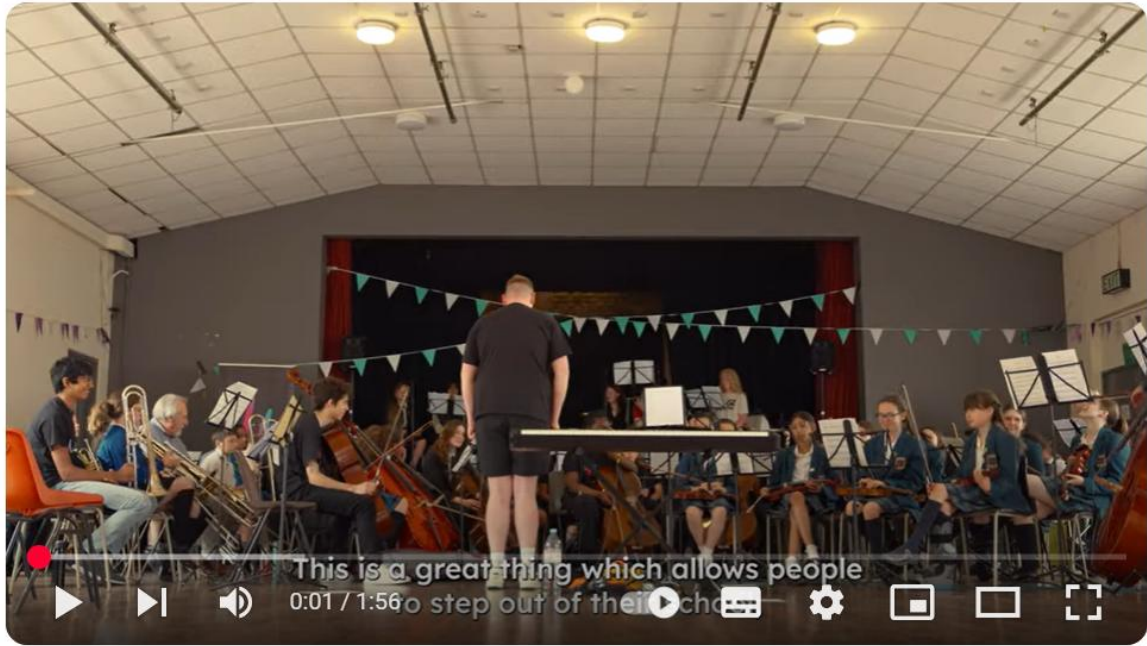
Watch the [full video on Essex Apprenticeship Hub](#) on our Extraordinary Essex channels. The white start button above doesn't work.

Essex Music Service

This month we're shining a spotlight on the Essex Music Service. This service provides a wide range of music education opportunities across schools and communities within Essex, supporting young people to enjoy and progress on an instrument, make music within a group or vocally.

Carla Mulholland is Head of Music at Mark Hall Academy. She wants the students at her school to have the same opportunities she had growing up. She said:

I wanted them to be able to play an orchestral instrument free of charge. To have this project then be able to play with a professional orchestra was just incredible.”



Essex Music Service, Extraordinary Essex - Essex County Council

Watch the [Essex Music Service video](#) to hear more about how the service help young students learn instruments and thrive making music.