

# The Bugle

No 285 20th April 2026  
Connecting people  
Contributions to trading.as.wdr@googlemail.com

*"There are people who, instead of listening to what is being said to them, are already listening to what they are going to say themselves"*

Albert Guinon



## Your options on May 7th

These are the candidates standing for Arlington (our ward) in the East Sussex County Council elections on May 7th. Register to vote by midnight tonight.



Nick Bennett,  
The Conservative Party



William Boone,  
Reform UK



Ricardo Canha,  
Green Party



Brendan Clegg,  
Labour Party



Laura Murphy,  
Liberal Democrats



## On the roads

There'll be two-way working at the level crossing on Firle Road south of Ripe overnight from Tuesday 21st April until the 23rd.

There'll be temporary traffic lights on the A27 between Drusilla's and Milton Street, on 23th and 24th April, for electrical works. From April 27th, there'll be temporary lights between Alciston and Drusilla's, for litter-picking, over four days.

✚ **LRC** Next service:

Morning Prayer, 10:30am, Sunday 26th April, at Ripe (with a baptism), led by Revd Steve Osei-Mensah, followed, after a short break, by the Annual Parochial Church Meeting.



Right: Nicholas Hamblin, Geoffrey Stoner and regular German visitor Matthias Dost atop Ripe Church, setting up a new rope and flag.



The small team of volunteers who clean St Bartholomews' Chalvington need help. The rota works out at each person doing a clean once a month, on a Friday or Saturday. If you have time, please call Pat Appleby on 01825 873119.



Presumably abandoned in Ripe by someone who thinks they've got GPS and electric motors to find their way back to the supermarket.

## Taking a longer walk

The part of the footpath along the south-east lip of Arlington Reservoir is closed, for maintenance and repair along the dam wall. It means a longer walk for those who like to do the full circle.



There's no short cut through the field; please follow the signs. The footpath closure has been signed off for six months, but the work may be completed sooner.

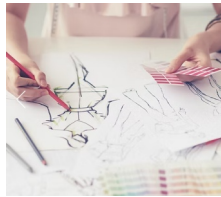
Last week, Arlington Reservoir was 99.1% full, according to figures from operators South East Water.

## On the boundary

The memorial bench to Peter Barron of Ripe was in place in time for his beloved Glynde & Beddingham CC's first home fixture of the new season. Karen thanks all who contributed.



## Trust has more to give



The Chalvington Trust, which makes grants to children and young people in the parish to support their educational and spiritual development, is inviting applications for 2026, to be submitted by the end of May.

There's been a donation to funds this year, increasing available support. Details of how to apply are online at [create7.co.uk/the-chalvington-trust](http://create7.co.uk/the-chalvington-trust), or via links on the Parish and RACCA websites.



Looking ahead, The Roebuck Inn is planning a Tapas Night on Thursday 30th April, ahead of the Bank Holiday weekend. There'll be a Spanish guitarist, and plenty of sunshine cocktails.

Right: An classic patch of cirrocumulus clouds spotted above Ripe on Thursday evening, captured by Eric Hunter. Composed primarily of ice crystals, these clouds usually form more than 5 kilometres above ground, and signal fair but cold weather.



Below, Katy Ellis's pictures from Pollards Wood, off Sheepcote Lane in Chalvington.

