

# Babraham Forest Garden

## *Growing Greens Together*



There are spaces for 8 people each day. If you'd like to grab a place, please get in touch with the Project Manager: Hannah Thomas (Mob: 07880 773855) [hannah@hannahthomas.co.uk](mailto:hannah@hannahthomas.co.uk)

### The Babraham Forest Garden Project

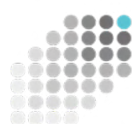
In Spring 2021, South Cambridgeshire District Council's Zero Carbon Communities Fund awarded a grant to Babraham Parish Council for the development of a community forest garden to mitigate climate change impacts, create a shared space for growing edible plants and inspire local children about nature.

The grant has supported project set-up, design, management, outreach and fencing, with matched funds from Babraham Parish Council to buy the trees themselves and to support the project's second year of planting shrubs. Babraham Research Campus have given permission for the Forest Garden to be sited on two acres of the Campus estate.

**The Babraham Forest Garden has been made possible with support from:**



**Babraham Parish Council**

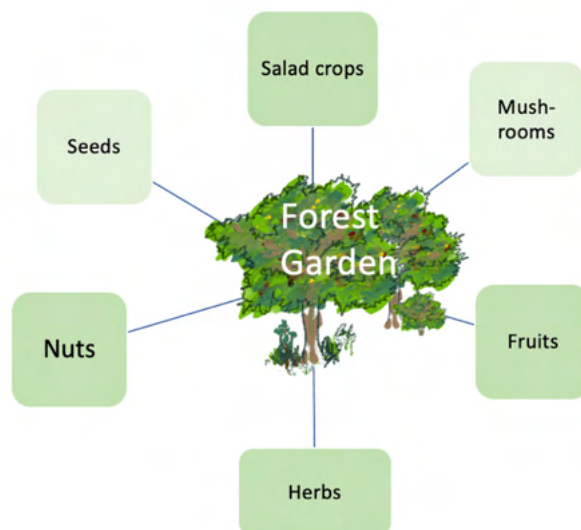


**Babraham  
Research  
Campus**



## What's a Forest Garden?

A forest garden is a garden that is planted to resemble an open, natural woodland, with trees, shrubs and perennials that are edible or have ecological benefits like attracting pollinators or improving the soil's richness. A mature forest garden will be a beautiful, low-maintenance place for people to enjoy, eventually producing fruits, nuts, seeds, herbs and salad crops. Planting the forest garden will increase biodiversity and help tackle climate change by locking up atmospheric carbon in the plants and soil.



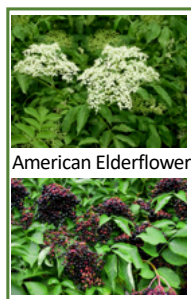
## What sorts of plants will the Forest Garden have?

The Babraham Forest Garden Project commissioned Simon Miles, a professional horticulturalist with his own 12 year-old forest garden in Falmouth ([The Forest Garden](http://www.theforestgarden.co.uk)), to create a forest garden design for Babraham, selecting the right plants for our conditions, locating them alongside natural companion plants that help control pests and making sure they are given enough light and space in the site to flourish.



The design includes an unusual variety of edible plants, such as Medlar, Chinese Quince, Chokeberry, Autumn Olive, Szechuan Pepper, Asian Pear, Edible Hibiscus, Chilean Guava and Bronze Fennel.

The garden will also contain several varieties of eating apple, crab apple and gage trees, like the 'Cambridge Gage', provided by the [East of England Apples and Orchards Project](http://www.eastofenglandapples.co.uk), a Norfolk-based charity promoting and preserving local heritage varieties.



American Elderflower



Medlar



Plum varieties



Stone pine



Chinese quince



Chokeberry



Szechuan Pepper



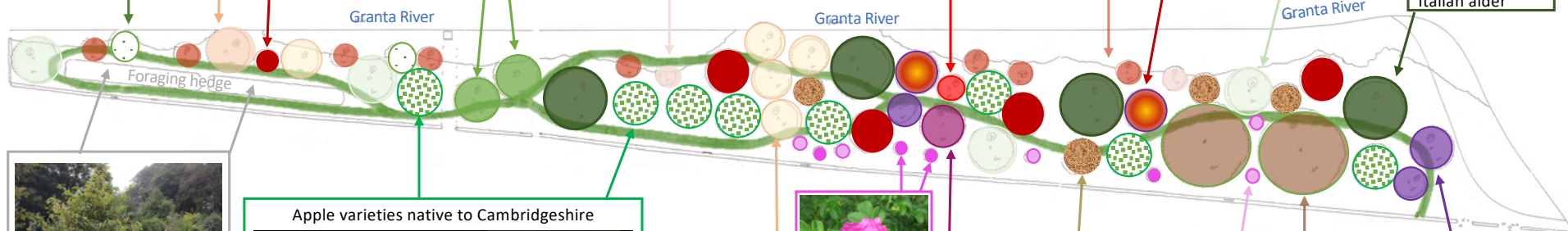
Greengage  
'Cambridge Gage'  
and 'Willinham  
Gage'



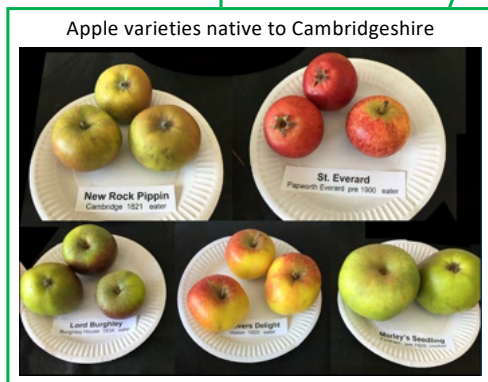
Autumn Olive



Italian alder



A 'foraging hedge' of small fruit trees partnered beneath with berry species, garlic, fennel, comfrey, lemon balm and horseradish.



Apple varieties native to Cambridgeshire



New Rock Pippin  
Cambridge 1821, seedling

St. Everard  
Pippin variety, pre 1800, seedling



Lord Burghley  
Pippin variety, 1821, seedling



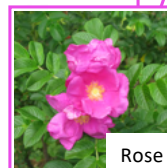
Lovers Delight  
Pippin variety, 1821, seedling



Marry's Seedling  
Pippin variety, 1821, seedling



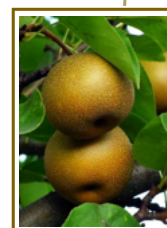
Hazelnut



Rose



Hawthorn



Asian pear



Edible Hibiscus



Sweet Chestnut



Plum/apricot  
hybrid



### Protecting the site and plants

As the forest garden will be full of edible trees, shrubs and ground plants, it's essential that the site is completely free of dog mess. It's also important to prevent deer and rabbits from eating or damaging the young plants.

A new fence has been put up which will initially keep the dogs and deer at bay, and will be rabbit-proofed before the shrubs and ground plants go in.

Saplings need to be protected by tree guards and canes to support them as their roots get embedded in the soil.



**NEEDED!** We are on the lookout for old bicycle inner tubes, which can be recycled into flexible support straps for the tree guards. If you might have some, please email Hannah ([hannah@hannahthomas.co.uk](mailto:hannah@hannahthomas.co.uk))

### Involving the local schoolchildren

Forest Gardens can offer a wonderfully enriching way for children to enjoy being outdoors, learn about ecosystems and biodiversity and develop new skills in growing plants.

Babraham Primary School is very supportive of the Babraham Forest Garden project and keen to engage children in tree planting activities. Part of the support that the project will provide to the school is rebuilding their raised beds so that they are more child-friendly and ready for growing future forest garden plants. A small group of parents will be involved in the rebuilding, recycling existing materials as much as possible.