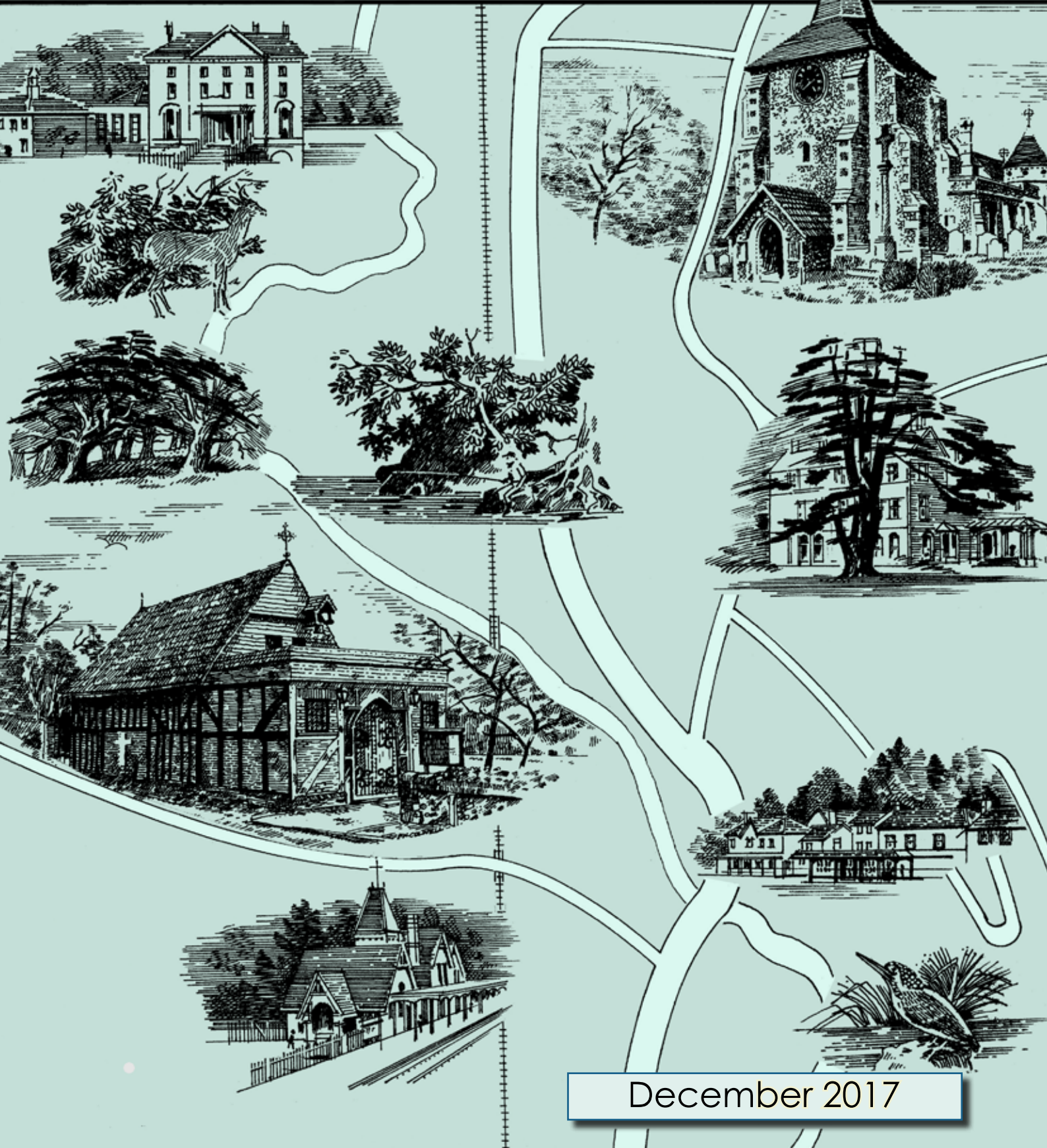


# MICKLEHAM PARISH Magazine

A community magazine for Mickleham and Westhumble



December 2017



# TRUGREEN®

## Professional LawnCare

### A lawn is never JUST a lawn

- Fertilisation • Weed and moss control
- Aeration • Scarification • Insect control
- Disease treatment • Hard surface weed control

Call now for a free LawnCare Analysis

**01306 644886**

TruGreen (Epsom)

Michael Beecheno

The Cottage, Pilgrims Way, Westhumble

Starting at just £20 per treatment

A Service **MASTER** BRAND



## Bullimores

Chartered Accountants

### The Safe Pair of hands

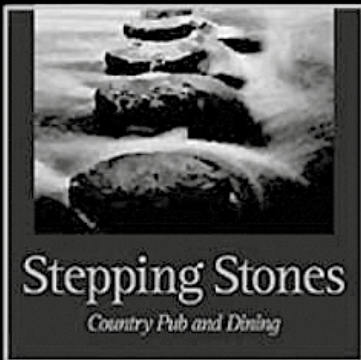
Tax • Accounts • Probate  
Inheritance Tax & Executorship

For advice, please call us on: **01306 880880**

or email: [partners@bullimores.co.uk](mailto:partners@bullimores.co.uk)

[www.bullimores.co.uk](http://www.bullimores.co.uk)

Bullimores LLP licenced to carry on out the reserved legal activity of non-contentious probate in England & Wales by the ICAEW



**STEAK NIGHT  
EVERY TUESDAY  
TWO COURSE MEAL  
GLASS OF WINE  
£19**

Food Served All Day – Free Wi-Fi  
Walkers – Muddy Boots – Cyclists – Families and dogs  
All welcome

*Lovely function room available for  
meetings, family and business events*

Near Box Hill and Westhumble Station  
01306 889932 [www.steppingstonesdorking.com](http://www.steppingstonesdorking.com)  
[steppingstonespub@gmail.com](mailto:steppingstonespub@gmail.com)



*Please see  
website  
for  
special  
events*

## Sherlock Funeral Service

*Sherlock Funeral Service is an  
Independent family owned business,  
established over 100 years*

- Private Service Chapel & Rest Rooms
- Home visits arranged if required
- Pre-Paid Funeral Plans available
- Free Parking

Telephone: 01306 882266

Trellis House, 190 South Street, Dorking RH4 2ES.

Email: [office@sherlockandsons.co.uk](mailto:office@sherlockandsons.co.uk)



**Funeral Directors & Monumental Masons**

# MICKLEHAM PARISH Magazine

December  
2017

## Mickleham Parish Magazine

A community magazine for Mickleham and Westhumble, published under the auspices of Mickleham PCC, with an independent editorial panel.

The magazine is published at the beginning of each month, except January and August.

COPY DEADLINE  
FOR THE  
FEBRUARY 2018  
MAGAZINE  
Sunday  
7<sup>th</sup> January

send to:

Sue Tatham  
St Anthony, Pilgrim's Way  
Westhumble  
Dorking RH5 6AW  
01306 882547  
sue@thetatham.co.uk

Contributions in any form are welcome, as are good quality photographs. There is no charge for advertising local charity and community events. However, the editors reserve the right to shorten, omit or reformat articles submitted for publication, depending on space.



Printed by Bishops Printers,  
Portsmouth

Leatherhead Rectory  
St Mary's Road, Leatherhead

Dear friends

I am writing this a week or so before Malcolm's last Sunday, 26<sup>th</sup> November, the feast of Christ the King, the last Sunday in the church's year. As you know, Malcolm will be retiring after four years as your Parish Priest. No doubt more will be written about the day after the event.

Losing a leader is always hard, especially one who has looked after your spiritual welfare. There will have been good times and bad times, celebrations and commiserations. It is one of the great privileges of parish ministry to be allowed to share in both.

Malcolm and I have been colleagues for four years, and I know you will have valued his ministry. I know how much I have valued his friendship, his wide and varied experience and his quiet wisdom. I know also that, with me, you will be wishing Malcolm and Sue a rich retirement with time to enjoy their children and grandchildren.

We are actively looking for Malcolm's successor, someone whose heart is for this church that truly is at the heart of your community. Please pray for wisdom and discernment as we undertake this task. It is a process that can take some time, but I am sure that you will bear with us as we try to balance proper haste with the vital importance of finding the right person.

In the meantime, our Curate, Ian, our Licensed Lay Ministers, Gail Partridge and Sally Milner, and I are always available for any pastoral issues that may arise. Your Sunday services will continue with the four of us and with locums leading your worship – John and Anne have been working hard to put in place a rota for the next few months. I would like to take this opportunity to thank them, and all those stepping up to help them, for all that they have done, are doing and will do in this time of vacancy.

Advent Sunday will not only mark the start of the new church year but also the start of the vacancy. This season of preparation and reflection then leads to the joyful celebration of Christmas.

I look forward to sharing this time with you.

Kindest regards,

*Graham*

Please join us at St Michael's for our traditional  
**Service of Lessons and Carols**  
Sunday 17<sup>th</sup> December 6.30 p.m.

Featuring an augmented church choir  
conducted by Juliet Hornby  
with Jan Assersohn playing the organ





## JOIN US FOR BREAKFAST

THE RUNNING HORSES

9 – 10 A.M.

Please book by the Tuesday before

## MEN'S BREAKFASTS

THIRD SATURDAYS

**20<sup>TH</sup> JANUARY**

Book with: Andy Diamond

diamo1@hotmail.co.uk

## WOMEN'S BREAKFASTS

FOURTH SATURDAYS

**NO DECEMBER BREAKFAST**

**27<sup>TH</sup> JANUARY**

Book with: Stephanie Randall

0773 6933 482

srandall55@gmail.com

# Christingle Workshop

St Michael's School

Sunday 3<sup>rd</sup> December

9.45 a.m.

followed by the

Christingle Service

St Michael's Church 11 a.m.

A great opportunity for families with young children – not just pupils at St Michael's.

Do come along.



## Charity knitting

**T**hank you to everyone who has contributed a baby blanket to the SANDS charity. I have sent a total of 34 blankets over the last few months, which means that we have supported 34 families who have experienced the grief of a neonatal or still birth. This has been a tremendous effort

and our contribution has been greatly appreciated by the charity.

If you are still knitting or crocheting a blanket, I am happy to give you the details of where to send it but I will not be sending another box of blankets from the local community.

Anne Weaver

# Tea@3

FOURTH MONDAYS

**NO DECEMBER TEA@3**

Monday

22<sup>nd</sup> January

Host: Angela Ireland

St Michael's Lodge, Old London Road

01372 379381

ALL WELCOME

TRANSPORT AVAILABLE



Pip Burley Presents

# The Golden Age of Song

Celebrating the lives and work of two of the greatest songwriters who ever lived

Wednesday 31st January 2018 Cole Porter and George Gershwin  
Parish Church Hall Leatherhead at 7.30 p.m.

Tickets: £15 Further details and tickets from Jackie Hampton  
info@jackiehampton.com or 01372 376640

# Christmas Carolling in the Westhumble Chapel Ruins

Tuesday 19th December 6 p.m.

*Followed by mulled wine and mince pies at Chapel Farm, where the ponies and donkeys will be waiting to greet you.*

If the weather is bad we meet at the farm to sing indoors before refreshments.

Please come prepared for the outdoors with a torch and warm clothing.

There will be a collection for the Gambian Horse and Donkey Trust,

www.gambiahorseanddonkey.org.uk. Further information from Liz Absalom 07801 791123.





## The Crib Service Christmas Eve at 4 p.m.

Westhumble Bonfire Field where the children will form a tableau to depict the story of Jesus' birth in that humble stable in Bethlehem.

**F**inal preparations are under way for our annual Crib Service, but we still need battalions of angels, flocks of shepherds and a camel train of wise men. Children and adults alike are welcome to come suitably dressed – so seek out your old tea towels and dressing gowns and join us.

We will be starting our procession at 4 p.m. on Christmas Eve at the junction of Adlers Lane, Burney Road and Chapel Lane and will process to the

If you have not been before, make this the year you join us to experience something truly delightful. The Crib Service is not just for children; everybody is welcome to join us. There will be some short readings by the children, some carols and the opportunity to remember what Christmas is all about – not turkey, mince pies and an endless list of things to do, but the birth of an innocent baby whose parents must have felt joy and fear in equal measure.



Following the service, which will last no more than 40 minutes there will be refreshments afterwards and the opportunity to exchange greetings with all your friends and neighbours.

If your child would like to take a leading role as one of the main characters, please contact me as soon as you can.

Anne Weaver, 01306 883932  
weaver\_anne@hotmail.com



Calling all ex-Crew members 18+ – an opportunity to catch up  
Thursday 21<sup>st</sup> December 7.30 p.m. in The Stepping Stones  
Contact Jonathan Blake. 07787126966

## Carol singing in our Local Pubs Friday 22<sup>nd</sup> December Everyone welcome!

7.15 p.m. Stepping Stones    8 p.m. The Running Horses  
8.45 p.m. King William IV



*Warmest Christmas wishes  
and a happy & healthy  
New Year to all our local friends*



*Bernie & Denis Bailey, Mary & John Banfield, Jo & Paul Brown,  
Cathy Cain, Carole & Jim Fuller, Rosemary Glover, May Hardwicke,  
Stephanie Randall, Fiona Roberts-Miller, Rose & Stan Spence,  
Sue & Ben Tatham, Elizabeth Watson, Judy & Brian Wilcox*

*This year we are sending our Christmas greetings through the parish  
magazine and giving the money saved on cards and postage charity.*

The £100 raised by this MPM Christmas card has been given to St Michael's Community Nursery



Superb professional  
cleaning of carpets,  
oriental rugs,  
upholstery, curtains  
and leather  
Guardsman  
anti-stain protection

- spot stain and odour removal
- leather cleaning specialists
- flame retarding
- dust mite reduction service
- all work fully insured & guaranteed

For a free, no obligation quotation, call today  
**Freephone 0808 144 9071**  
John Joannides, 28 Bracken Close, Bookham

**Safeclean**  
*The furnishing care specialists from GUARDSMAN*



## Pinehurst Rest Home

*We aim to provide an excellent service at competitive rates, supporting emotional, physical and social needs of our clients, always respecting and protecting their status as adults.*

- Residential and 24-hour daycare
- Excellent *cuisine*
- Facilities for disabled: medic bath / lift
- Home doctor in attendance
- Single & sharing rooms
- Convalescent & short stays
- Lounge with TV & piano
- Separate dining room
- Physiotherapist, chiropodist & hairdresser
- Entertainment: theatre visits / parties & cabarets held on premises

**National Trust Road, Box Hill**  
**Mickleham, Dorking, Surrey RH5 6BY**  
**Telephone: 01306 889942 / 888253**

## Dorking Decorators

PROFESSIONAL PAINTERS & DECORATORS

**40 Years Experience**

**All aspects of painting and decorating**

**01306 640418**

**www.dorkingdecorators.co.uk**

Approved by Trading Standards & Checkatrade



## CHRIS HULME

### Garden Machinery

*Service and repair of all makes and models of:*

- Ride-on mowers
- Rotary mowers
- Cylinder mowers
- Chainsaws
- Strimmers
- Hedge cutters
- Rotavators
- Blower vacs

*Quality secondhand machinery  
Collection and delivery service*

The Barn, Cowslip Lane, Mickleham 01372 377757 / 07950 961606



## Flowers by Elaine

Established 1978



- \* Bouquets \* Arrangements \* Hand-tied Wraps \* Plants & Bulbs \* Exotic Flowers
- \* Pots & Baskets \* Planted Displays \* Champagne \* Wines & Spirits \* Fresh Fruits
- \* Cute Teddies \* China & Vases \* Helium Balloons

01306 883511 fbe@btconnect.com 66 High Street, Dorking, Surrey RH4 1AY  
Order online at: [www.flowersbyelaine.co.uk](http://www.flowersbyelaine.co.uk)



### For all your decorating needs...

Professional, friendly and speedy service at all times

Fully insured

Insurance work

Exterior painting

Interior decorating

Free quotes & advice

Oil & Water-based products

Commercial/Domestic work

Wallpaper hanging & removal

07947 135 376

0208 3978 962

[www.slhdecoratingservices.com](http://www.slhdecoratingservices.com)

# Mickleham Remembers

On Sunday 12<sup>th</sup> November St Michael's Church was packed out once again for the 11<sup>th</sup> Remembrance Sunday concert by Mickleham Choral Society, this time in support of the Invictus games and church funds.

Starting with a haunting rendition of *The Last Post* by candlelight, the programme took its now familiar form and showcased some of the choir's pieces for next year's Leith Hill Musical Festival, interspersed with solo performances by our area's extraordinarily rich seam of young classical music talent.

The choir started with two dramatic and challenging pieces from Elgar's *The Kingdom* oratorio. (If, like me, you have to look up classical music terms on Wikipedia, an oratorio is similar to an opera without the theatrical element and commonly on a sacred theme).

Then we heard four very varied pieces all by living composers. One of them, Adam Stanworth, Box Hill School's Director of Music, played the piano accompaniment for his own beautiful composition with words from Tennyson's poem *There is Sweet Music*, sung by an ensemble. *Something Told the Wild Geese* followed and just like a goose started quite delicately but quickly took on a more robust air. Then came two pieces with just the gentlest hint of gender stereotyping. The men performed *Wide Open Spaces* evoking

the western theme of adventure under big skies, and then the ladies performed *Stocking and Shirt* about the challenges of doing the washing in inclement weather! Thankfully, any militant rumblings were quickly undone by the latter's delicate and humorous little flurry to finish which drew a chuckle from the audience.

Three further pieces, all from America, followed. They included two slavery-era spirituals *Soon I will be done* and *Ride on King Jesus*, contrasting powerful crescendos with delicate phrasing, the latter alternating interplay between male and female voices – a technical test for conductor and choir alike.

Perhaps the greatest praise should be reserved for our younger soloists though. Elliot (the Von Trapps have nothing on his family) Perks brilliantly conveyed the drama of *Romance* for viola by Bruch from 1911, a piece evoking the era before World War I transformed society and music forever. Lettice Rowbotham later treated us to a superb performance of John Williams' instantly recognisable, sublime and haunting theme to *Schindler's List* for violin. Arguably the loudest applause was reserved for Emily Heuvel though, whose solo rendition of the spiritual *Deep River* had everyone enthralled.

At the end of the programme the audience showed their great appreciation to Juliet Hornby for



another excellent performance as conductor for the evening; to Jan Assersohn and Tracy Kennington for their superb piano accompaniment and of course to the members of the choral society themselves, without whose talent, commitment and enthusiasm such concerts would not be possible.

The evening finished with the usual convivial atmosphere in the church and the corresponding surge in demand at the 'Runners'.

Final mention should go to the penultimate item on the programme though: Martin Cox's evocative reading of Tennyson's 'O-Level classic' the *Charge of the Light Brigade*. In this year, the centenary of the Battle of Passchendaele, it was a fitting tribute to all those who have put themselves in harm's way in service to their country, often in the most desperate of circumstances.

We will remember them. Rob Machin

**Mickleham Choral Society's**  
**CHRISTMAS CAROL PARTY**  
**FRIDAY 15<sup>TH</sup> DECEMBER**  
**MICKLEHAM VILLAGE HALL 8 p.m.**

**Tickets £12 including refreshments £6 children 12 & under**  
**Anne Weaver 01306 883932 weaver\_anne@hotmail.com**





## Mickleham – My Running Idyll

I have always loved to run. Whether it be to cross a finish line, reach a ball during a match or scale to the top of a hill. If I am not running, then you will find me walking or biking. Anything to burn off energy, breathe in fresh air and enjoy the outdoors. With that being an integral part of my make-up, imagine my joy at moving to Mickleham. A perfect bespoke playground to pursue my loves.

Before I chatter on though, I should introduce myself. I am Nikki, and along with Jon, we moved to Mickleham this year. Having spent my previous years in north east Hampshire, there was a lot of adjustment and orientation required.

So what better way for me to get to know my new surroundings. Pull on my trainers and explore it on foot, which leads nicely to my next introduction. Ted is the third party in our trio. He is a rather bouncy and enthusiastic six-month-old 'spoodle'. His breeding of English Springer Spaniel and Poodle have certainly produced my perfect running buddy.

Using my trusty OS map, along with trial and error, I am mentally joining everything up. Although navigating Headley Heath has been the source of much confusion. Jon has received several phone calls from me saying 'I am a little lost and will be longer than anticipated. Don't worry I'll work out where I am!'.

With my confidence building, and Ted getting older and stronger, our runs are now expanding into Norbury Park, Denbies and Ranmore. I do not think I will ever tire of finding new routes, chancing upon inspiring views and sensing the change of season in the air.

You may have already bumped into Jon, Ted and me when we are out and about. The three of us are easily recognisable as Jon and I sport red faces and puff like trains. Ted on the other hand will be sniffing, full of vigour and be insisting that we speed up.

If you do see us, give us a wave and some words of encouragement. We will certainly be needing it! Nikki Sansom



## Leatherhead Community Association 2018

**EMINently Interesting!** – 'Mad Tracy from Margate' is the title of the first lecture in the new series of Art/History lectures, and this can only be about Tracey Emin.

Come to the Letherhead Institute in January 2018, just the place to come in out of the cold, and learn more about a fascinating and controversial lady in the first lecture in the Art/History lecture series on 17<sup>th</sup> January. There are four more to follow on subjects of 'Suburbia', Zoffany, German Expressionism before 1914, and a fairly unknown Danish Artist.

**For bookworms** looking for a cosy shelter – did you know that there

is a library of some 1500 books and over 350 DVDs that is free and open on weekday mornings with a resident librarian present on Fridays. Added to which there is a warm stove and coffee is always available.

**Just to whet your 2018 appetite** – From January yoga, bridge, table tennis and snooker and Scrabble take place weekly, and once a month there is Book Club, Tea with Talks, and recorded music afternoons with the first on 17<sup>th</sup> January exploring 'New Beginnings' through music. Visits start again in the new year (full list from the Institute).

**Wellies may be needed!** – For the

more energetic, (and hale and hardy) the full and varied programme of walks, both short and long start again in February and Peter Humphreys is happy to give you all the details - 01372 378347.

If you would like to have all the information as to what is arranged by the LCA please try the website-www.leatherheadca.org.uk, or contact Sarah the administrator on 01372 360508, or email-LCA2@btconnect.com, she is always very happy to help.

Everyone at the LCA wish all the readers of the Mickleham Parish magazine a very happy Christmas and, hopefully, a peaceful 2018. Frances Presley



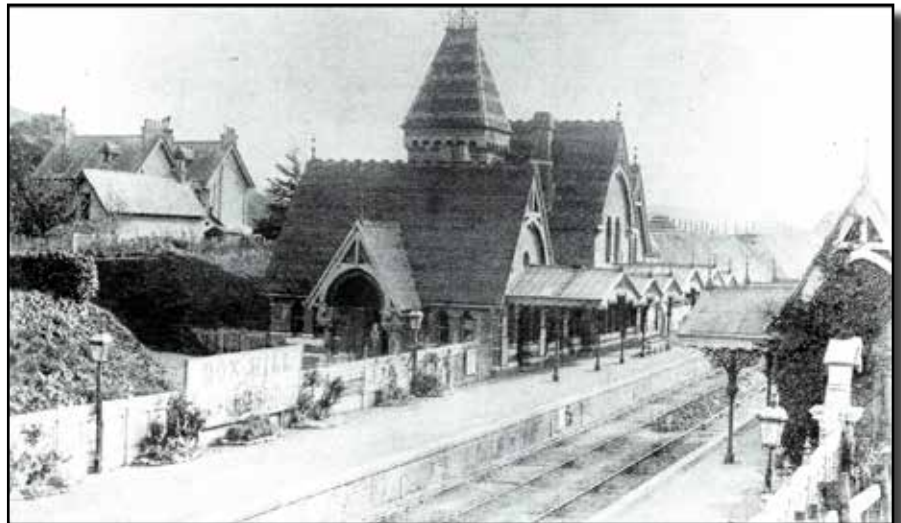
# Our Railway Station included in the Top 10 in Britain

Having written books on Britain's 1,000 best churches and 1,000 best houses, former Times editor Simon Jenkins has now taken on railway stations. In a recent review of his latest book, Britain's 100 Best Railway Stations\*, the Guardian chose its top 10 – one of which was Box Hill and Westhumble.

Rather than describe the article, it is easier for me to use Simon Jenkin's own words:

*Were I to tire of travel, I should apply, Betjeman-like, for the post of stationmaster at Box Hill & Westhumble. My visit was on a warm summer's day, with the soft outline of Box Hill on the North Downs in the distance. Passing trains were mere irritants. The manor in which Fanny Burney lived, a pub and a scatter of cottages were hardly visible. This is as perfect a rural halt as I know.*

*It was not until the 1860s that the London, Brighton & South Coast Railway (LBSCR) built a line from Leatherhead to Horsham. The station, by company architect Charles Driver, is a marriage of his favourite styles, French château with elements of Venetian Gothic. There appears to be more roof than wall, the building being composed of sweeping gables covered in layered patterns of slate. The facade*



Box Hill for Burford Bridge Station from an original 1900 postcard photograph published by Action Packs. Note striped tiles on roof of tower and middle gable.

*to the platform is of two steeply gabled wings, separated by a large off-centre bay with ornamental tower. At one end is an elaborate porch resting on extravagantly floral Venetian columns.*

*The station sits in a dell, so thickly treed that to wander to the end of the platform is to feel lost in the woods. The platform sign carries lines from local Victorian author George Meredith, declaring: 'Nowhere in England is there a richer foliage, or wilder downs and fresher woodlands.' The former ticket hall, with roof rafters as in a medieval*

*hall-house, is occupied by a friendly coffee bar cum bicycle shop called Pilgrim Cycles. The Pilgrims' Way runs nearby.*

Which I think is a pretty accurate reflection. I can particularly recommend arriving a few minutes early to catch a train, and wandering to the far end of the (now-extended) platform – it really does have a 'deep-in-the-country' feel.

Chris Budleigh  
Station occupant

\*Jenkins, Simon (2017) *Britain's 100 Best Railway Stations*, Viking

*Editor's note: In 1861 when the proposed route of the railway from Leatherhead included parts of Norbury Park, the then owner was Thomas Grissell (1801-1874) who made his fortune as a public works contractor. His firm was responsible for constructing a number of prestigious buildings in England, including railway stations. Thomas laid down stringent conditions for the proposed railway, including a tunnel which should have no shafts and the company was forbidden to disturb the surface above it. At his behest the railway station at Westhumble was built in the French château style.*

Photograph Ben Tatham



Box Hill and Westhumble station today.

Far left: The porch leading to what was the booking hall. Note description in text above.

Left: The station looking north

## ASHTEAD PARK LANE FINE ARTS

RESTORATIONS - PICTURE CLEANERS - FRAMERS

ART GALLERY

*Many originals and prints for sale*

Open 9.30 am to 5 pm Monday to Saturday  
or call for appointment

102 The Street, Ashted KT21 2AW

01372 277284 or 07940 677932

lorna@parklanefinearts.co.uk

## EDE BROS

REMOVALS · STORAGE · SHIPPING

- Since 1926, Capel-based and family owned
- STRESS-FREE, local, national & worldwide
- Contact us for your **FREE** estimate...

**01306 711293**  
**edebros.co.uk**



**We provide the best  
possible care for your feet**

**Book your appointment:  
01372 454583**



**Bookham**

**Chiropody & Podiatry Clinic**

Diagnosis, Expert Treatment & Professional Care  
for Your Feet

**29 High Street, Great Bookham KT23 4AA**  
**www.bookhamchiropody-podiatry.co.uk**

## Betchworth Electrical Contractors Ltd.

Tel: 01737 843079

Mob: 07966 239644

- Additional Lights and Sockets
  - Complete Rewiring
- Garden Lighting and Power
- Electrical Installation Condition Reports
  - Specialists in Fault Finding
- Telephone & Computer Cabling
  - Central Heating Controls
- Smoke Alarms to BS5839:Pt6



All work is in compliance with  
BS7671:2008 Amendment 3



Gill and Paula would like to warmly welcome you to Aspen Care, offering assistance to enable you to live in the comfort of your own home with care and companionship.

- A happy alternative to a care home
- Cover while your family or carer takes a holiday
- Recuperation and rehabilitation following a hospital stay
- All aspects of personal care, medication and meal prep
- Dementia care, disability, chronic & critical conditions, end of life care
- Accompaniment to appointments

Call for a chat to discuss your requirements.

We look forward to hearing from you.

01737 354821 info@aspensliveincare.co.uk www.aspensliveincare.co.uk

## ALFA CHIMNEY SWEEPS

- Clean prompt work
- 30 years' experience
- Specialist advice for old/problem chimneys
- Weekday and weekend service
- Fully insured

**01306 883455**



## YOUR LOCAL FARM SHOP ON DENBIES WINE ESTATE

**farm shop deli plant centre**

**FREE PARKING** **www.vgfarmshop.com** **01306 880720**

Open 7 days 9.30 a.m. to 5.30 p.m.

- Fresh fruit & veg – local & home grown
- Great range of local cheese
- Fresh bread, cakes, croissants & pastries
- Cook ready meals; Bangers Galore sausages

**LOCAL \* NATURAL \* ETHICAL**

*Local free range Christmas turkeys,  
veg & cheese to order*

*Christmas trees*

*Silent Pool & The Gin Kitchen  
Artisan gin*





## ANDY DIAMOND'S POUND'S 4 POUND'S CHALLENGE

Everyone's favourite Diamond geeza has set himself a challenge...

Andy is aiming to lose a colossal FIVE stone over the next SIX months, starting in November after a ten-day detox... that's no alcohol... repeat, no alcohol for TEN days! Sincerest apologies to The Runners and The Willy: loss of earnings will not be compensated during this period.

While losing the weight Andy is hoping to raise as much money as possible for some really worthy local causes, The

Brigitte Trust, LeatherHEAD START and The Meeting Room.

So if you would like to get behind Andy (not literally) and drive him towards his goal any donation would be gratefully received. He will be setting up a Just-giving page in the coming weeks so watch out for details.

As part of his efforts to lose weight Andy will be hitting the roads and taking part in the Moonwalk. The Moonwalk is in aid of 'Walk the Walk', one of the UK's largest grant-making cancer charities

and takes place on May 12<sup>th</sup> 2018 in London. There are two distances: half-marathon and marathon.

If you are looking for an excuse to get out of the house and would like to keep Andy and Anna (Darnell) company during their training walks please do get in touch (FYI some may terminate at pubs). You could even join their Moonwalk team... Diamond's Double Divas

Please contact Andy on [diamo1@hotmail.co.uk](mailto:diamo1@hotmail.co.uk) or Anna [annamariadarnell@icloud.com](mailto:annamariadarnell@icloud.com)



## Dorking Museum and Heritage Centre

62 West Street, Dorking RH4 1BS, Open Thursday, Friday, Saturday 10 a.m. – 4 p.m.  
[www.dorkingmuseum.org.uk](http://www.dorkingmuseum.org.uk) 01306 876591

**Closed after 16<sup>th</sup> December and re-opening 4<sup>th</sup> January**

Dorking Museum offers seasonal greetings to all readers and to the supporters and friends of the Museum. If you are in the town, why not drop into our shop for some Dorking themed cards, books or gifts? Among the items available this year are three unusual and original Christmas cards, created exclusively for the Museum by a young German artist, Sarah Mueller, and depicting original images of three Dorking landmarks, Dorking Halls, the Dorking Cockerel and St Martin's Church. Our current exhibition, 'Dorking 1917', remains on display until January 20<sup>th</sup>. This is the fourth in our popular series of exhibitions showing what life was like for locals and visitors on the Home Front during each year of the Great War. A fascinating glimpse into the lives of an earlier generation. The exhibition shows a time of hardship and tension in Dorking and the villages, as well as remembering the many casualties at

Passchendaele and further afield. But it also shows the lighter side of the year. Some relief for the locals was provided by Red Cross Week in June 1917, the biggest event of the war years in Dorking and the villages. The programme included a baby show, parades, whist drives, concerts, sales and auctions raised over £6,000 for the British Red Cross and the Dorking War Hospital Supply Depot.

The highlights of the week included the Grand Garden Fête in the grounds of Pippbrook and the auctioning of a donkey presented by Lord Northbrook. By the time it reached Dorking it had been repeatedly auctioned to raise money for charitable causes. Before the auction, Lady Lawrence of Burford Lodge was dared to ride the animal through the market in return for £1 for charitable funds.

All the villages held their own events. *The Dorking Advertiser* commented on



*Lady Lawrence (Sandra Wedgwood's grandmother) on the £100 donkey 1917*

the fête at Newdigate Place that the village presented a merry scene. Its summing up of that event could well have been applied to the whole week, or even the year: 'the long absence of pleasure had made everyone determined to enjoy themselves'.



*Rosa moyesii*

Few of us fail to love and enjoy roses, yet we often deprive ourselves of one of the rose's outstanding features – its hips – by our habit of dead-heading, which while very sensible to aid new growth and prolong flowering, does mean that by the end of the season we are left with stems and leaves but no hips and thus no colour!

I am not advocating abandoning dead-heading or pruning of cultivated roses but left to their own devices they will produce excellent hips. A slightly more judicious removal of deadheads or leaving major pruning until the New Year will give them a slightly longer and more colourful life.

But truly, hips are where species roses come into their own. They seldom require major pruning and can be allowed fairly unfettered growth in the right places. *Rosa canina*, the dog rose, is one which is probably familiar to most of us as it grows wild in hedgerows

## Mickleham and Westhumble Horticultural Society Hooray for Hips

and along roadsides, flowering in early summer with small, single pink or white flowers. Their clusters of brilliant red hips light up our hedgerows until the birds start stripping them or children, eager to make itching powder, sneak off with some, hoping to be unseen by watchful adults. It is the hairs inside the hips that cause the itching, the rest is not only perfectly harmless but a rich source of Vitamin C, such as in rose-hip syrup. In 1941 it was considered so important that a National Week for the Collection of Rosehips was set up in September with the aim of collecting at least 500 tons which were duly sold in chemists' shops the following year. The Ministry of Food publication, 'Hedgerow Harvest' was packed with recipes!

One rose that I treasure in my garden is *Rosa glauca*. It has a delicate arching habit (up to about 4 metres), grey-purplish leaves (excellent for flower arranging) and small, deep pink flowers. It also has superb, shiny hips in autumn. Over the weeks I watch them gradually disappear as birds help themselves and I have even watched squirrels climb up

into the branches and perch, picking them off individually in their paws.

*Rosa rugosa* may have very prickly stems, and slightly wrinkled leaves (*rugosa* = wrinkled) but the flowers, produced through summer and autumn, have the most fragrant scent. They start to produce their large red and orange hips early, quite often at the same time, creating a lovely combination. This rose is excellent as an alternative to more conventional hedging choices and choosing rugosas with both red and white flowers makes an attractive display that will last for much of the year.

My third choice of a rose with hips would be *Rosa moyesii*. It will grow up to 6 metres high, so choose your spot carefully! Flowers may be red or pink, but the real attraction is the large, long, bright red hips that are flagon-shaped. There is a magnificent specimen on one of the courtyard wall at Sissisghurst.

So, let rose hips prolong your autumn display into winter and help feed the birds and ground feeders like mice at the same time.

Judy Kinloch



## Mickleham and Westhumble Village Fête 2017

# CANCELLED

See future magazines for alternative fund-raising events

### House and Pet Sitting Service



Experienced semi-retired couple  
Ex-police officer & Head Housekeeper  
Available to care for your pets in your home, for short or longer periods.

Experience with most types of dogs and cats  
Both non-smokers

Excellent local references supplied

Call Alan or Jenny  
07707 848 916



Tracey's  
**SEWING  
ROOM**

- Bespoke dress making
- Soft furnishings
- Clothing alterations
- Curtains
- Sewing lessons
- Roman Blinds

Contact Tracey: 07511 079441  
traceyssewingroom@gmail.com



# Mickleham Presentation in California

**H**ello Mickleham! This is your Overseas correspondent writing from Irvine, California. I wanted to tell you what a splendid job my cousins Eric and Mary Flint did with their presentation about your beautiful village to the England Special Interest Group of the South Orange County California Genealogical Society. This group, which I lead, meets once a month to learn how to find their ancestors in England. And on 9<sup>th</sup> October, about 40 of our society members attended. Many of my 'regulars' were already familiar with Mickleham from stories I had told them about visits my wife Nancy and I have made there to see Eric and Mary.

Eric began the presentation with a very informative pictorial walk around the village, beginning at the old forge and blacksmith shop (now Frascati's), up Byttom Hill to the Almshouses, and past all the notable places in Mickleham so well-known to you who live there. The group heard about the 'The King Willie' and The Running Horses, and how the pubs figure in local village life.

Mary presented a section on the administration of weddings at St Michael's, including the marriage records and the marriage registration process, which was of particular interest to our genealogy group.

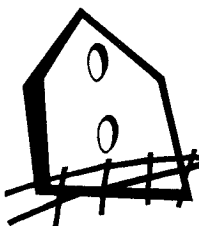
Eric also told us about St Michael's Church and the churchyard. Our group was especially interested in the slides showing the consecration of the new



*Mary and Eric Flint with Eric's cousin, David for my genealogy group during their visit, I had no idea they would take it so seriously and put so much effort into it.*

I am pleased to report to you that they were the very best representatives for your village, and won some new friends and admirers here for Mickleham. It is easy to see the care and pride you all take in your beautiful village. We spent a very memorable morning learning about Mickleham, St Michael's, local history and customs. We return them to your care with thanks, and regret we cannot send some of our California sunshine along with them.

David Flint



## Westhumble Residents Association Email circulation list

**A**s internet security improves It is becoming increasingly difficult to send blind carbon copy (bcc) emails.

Gmail requires us to split the list to enable us to send the mails and many receiving servers reject any mail that they think may be spam. In some cases, this is set at anything with 10 or more BCC recipients. The last digest I sent was rejected by 43 recipients, which I subsequently re-sent individually! This is not something I will do on a regular

basis so in the New Year we will need to review how we communicate.

Options could include:

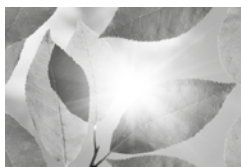
- reducing the list by confirming who really wants the mails and possibly limiting to one address for each individual/home
- requiring participants to accept cc where mail addresses are visible
- having a closed Facebook page and residents would opt to receive a private email whenever there is news

- using a third-party piece of software like Mailchimp.

Or maybe you have another idea? We will be discussing options at the January WRA committee meeting.

Holly McLaren, WRA Chair

Please note: I shall be away until 1<sup>st</sup> January and will address non-urgent matters on my return, urgent issues should be taken directly to the relevant authority e.g. Police/Borough/ County Council.



**Counselling  
Reiki / Reiki Courses  
Mind & Body Healing  
Shamanic Journeying  
Munay-Ki Rites**

*'Wow, it's amazing! I feel so much calmer within myself and also emotionally too, which is really good. I feel so different.'*

For further details please call Judith Cobby on  
01306 882229 / 07790 614448  
or visit [www.healing-inspiration.co.uk](http://www.healing-inspiration.co.uk)



**NJB DOMESTIC CLEANERS**

*come home to a clean home*

Mother and son business  
Fully insured

Weekly or fortnightly cleans  
One-off spring cleans  
End of tenancy cleans  
Shops, offices and communal areas

[ncbdomes@aol.c.uk](mailto:ncbdomes@aol.c.uk)

Please ring Nick: 07717 763 380  
or Chris: 07780 670491

**Ballroom Dancing  
Latin American Dancing  
Professional Training [IDTA]**

Private Lessons only  
Sunday, Monday & Wednesday  
Evenings 6 - 10 p.m.

At Mickleham Village Hall  
Dell Close, Mickleham, Surrey RH5 6EE  
07901 742 887  
[vmvdancing@gmail.com](mailto:vmvdancing@gmail.com)



IDTA Qualified Teacher

**STEVE & TIM LANGLEY**

*Experienced craftsmen*

ANTIQUE RESTORATION  
CABINET MAKING  
FRENCH POLISHING

Free estimates, collection & delivery  
01372 457700

07960 486455 07847 769517

**Rowlatt Garden Services**

**RGS**

EST.1985

***Gardens large and small  
we maintain them all***

All aspects of private and commercial garden  
and estate maintenance, landscaping undertaken  
Fencing, grass & hedge cutting

Telephone: 01737 844373 Mobile: 07887 838666  
References available upon request

**Road and Competition Engineering Ltd**



Specialists in the  
maintenance and  
restoration of  
historic road and  
race cars

From general servicing, performance  
modifications, engine/gearbox rebuilds  
to full restorations. We also offer vehicle  
storage. Our workshop is based in Charlwood



Jamie Mason 07840 698452 [www.raceltd.com](http://www.raceltd.com)

**In Pain? We Can Help  
Dorking Chiropractic Clinic**

Dr Graham M Allen & Associates

- Back Pain and Sciatica
- Hip, Knee, Foot and Ankle Pain
- Neck Shoulder and Arm Pain
- Headaches and Migraine
- Sports/Occupational injuries
- RSI/Carpal Tunnel
- Back Pain in Pregnancy
- Arthritic Pain
- Trapped Nerves
- Joint Problems

**01306 887793**

316 High Street Dorking RH4 1QX  
[www.dorkingchiropractic.co.uk](http://www.dorkingchiropractic.co.uk)

HSA



Registered by the General Chiropractic Council • Member of the British Chiropractic Association

**DORI VANA PLUMBING  
YOUR LOCAL PLUMBER**

EXPERIENCED, RELIABLE  
AND PROFESSIONAL

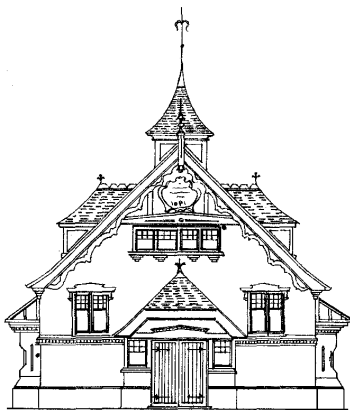
From changing washers to changing bathrooms

**CALL DORI**

**07977 220465 / 01306 887282**

Proud members of  
**Checkatrade.com**  
Where reputation matters





## Mickleham Village Hall available for hire

Hall bookings  
Table & chair hire

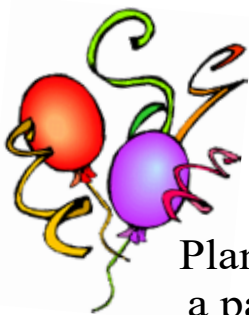
Deanna Darnell

01372 388474

07790 941 601

d\_darnell\_MVH@hotmail.co.uk

[www.surreycommunity.info/  
micklehamvillagehall](http://www.surreycommunity.info/micklehamvillagehall)



Planning  
a party?

Equipment  
available for hire

China ~ Cutlery

Electric urn

Equipment hire

Mary Banfield

01372 373912

mgbbmw@aol.com

## Community Directory

### BOX HILL (National Trust)

Head Ranger – Mark Dawson

01306 885502

[mark.dawson@nationaltrust.org.uk](mailto:mark.dawson@nationaltrust.org.uk)

Friends of Box Hill – Chair Mrs Lyn Richards

01737 842889

[lyn@mra.uk.net](mailto:lyn@mra.uk.net)

### BOX HILL SCHOOL

Headmaster – Cory Lowde

01372 374814

[hmsec@boxhillschool.com](mailto:hmsec@boxhillschool.com)

### DORKING CRICKET CLUB

Chairman – David Spackman

07831 859232

[david@theimagecompany.co.uk](mailto:david@theimagecompany.co.uk)

### DORKING GROUP OF ARTISTS

Exhibition Secretary – Patricia Booth

01737 24491

[patriciabooth100@gmail.com](mailto:patriciabooth100@gmail.com)

### DORKING LAWN TENNIS & SQUASH CLUB

Jim Cattermole

01306 883629

[jim.cattermole@uwclub.net](mailto:jim.cattermole@uwclub.net)

### DORKING RUGBY CLUB

Jim Evans

07789176417

[jim@flintcottage.net](mailto:jim@flintcottage.net)

### THE GARDEN SHED

Pauline Davis

07759 646 353

[paulinemdavis@gmail.com](mailto:paulinemdavis@gmail.com)

Susie Gowenlock

07768 923 088

[susiegowenlock@gmail.com](mailto:susiegowenlock@gmail.com)

### JUNIPER HALL FIELD CENTRE

01306 734501

[enquiries.jh@field-studies-council.org](mailto:enquiries.jh@field-studies-council.org)

Head of Centre – Simon Ward

[Simon.lr@field-studies-council.org](mailto:Simon.lr@field-studies-council.org)

Friends of Juniper Hall – Mrs Suzy Hughes

01372 275393

[suzyhughes@businessetiquetteint.com](mailto:suzyhughes@businessetiquetteint.com)

### MICKLEHAM CHILDREN'S PLAYGROUND ASSOCIATION

Secretary – Mrs Sarah Parfitt

07767 891772

[sarah@sarahparfitt.com](mailto:sarah@sarahparfitt.com)

### MICKLEHAM CHORAL SOCIETY

THURSDAYS 8 - 10 P.M. – MICKLEHAM VILLAGE HALL

Conductor – Miss Juliet Hornby

01372 373106

Secretary – Mrs Anne Weaver

01306 883932

[www.micklehamchoral.org.uk](http://www.micklehamchoral.org.uk)

[weaver\\_anne@hotmail.com](mailto:weaver_anne@hotmail.com)

### MICKLEHAM OLD BOX HILLIANS FOOTBALL CLUB

Secretary – John Atewell

01372 374745

### MICKLEHAM PARISH COUNCIL

SEE WEBSITE FOR MEETING DATES [www.micklehampc.org.uk](http://www.micklehampc.org.uk)

Chairman – Rev'd David Ireland

01372 379381

[rev.ireland43@btinternet.com](mailto:rev.ireland43@btinternet.com)

Parish Clerk – Trevor Haylett

[trevor.haylett9@gmail.com](mailto:trevor.haylett9@gmail.com)

### MICKLEHAM PARISH MAGAZINE

Editor – Mrs Sue Tatham

01306 882547

[sue@thetathams.co.uk](mailto:sue@thetathams.co.uk)

Deputy Editor – Charlotte Daruwalla

01306 884025

[chardaruwalla@tiscali.co.uk](mailto:chardaruwalla@tiscali.co.uk)

### MICKLEHAM VILLAGE HALL

Chairman – Ben Tatham

01306 882547

[ben@thetathams.co.uk](mailto:ben@thetathams.co.uk)

Bookings Manager – Mrs Deanna Darnell

01372 388474

07790 941601

[d\\_darnell\\_MVH@hotmail.co.uk](mailto:d_darnell_MVH@hotmail.co.uk)

*Continued on page 16.*

# ST MICHAEL'S CHURCH

*within the United Benefice  
of Leatherhead and Mickleham*

Incumbent – The Rev'd Graham Osborne  
01372 372313

**DURING THE 'VACANCY' ANY CHURCH-RELATED MATTERS  
SHOULD BE TAKEN TO ONE OF THE CHURCHWARDENS  
IN THE FIRST INSTANCE.**

## CHURCHWARDENS

John Banfield 01372 373912  
banfieldjohn@aol.com

Mrs Anne Weaver 01306 883932  
weaver\_anne@hotmail.com

## PARISH ADMINISTRATOR

Mrs Alison Wood 01372 376443  
admin@micklehamchurch.org.uk

## PCC SECRETARY

Mrs Elizabeth Moughton 01306 883040  
eliz.moughton@btinternet.com

## TREASURER

Richard Siberry 01372 375303  
Siberrman@aol.com

## WEDDINGS ORGANISER

Mrs Mary Flint 01372 363115  
maryflint8@gmail.com

## BAPTISMS CO-ORDINATOR

Mrs Vickie Leney 01306 884054  
vleney100@gmail.com

## FUNERALS ORGANISER

Brian Wilcox 01372 374730  
dbrianwilcox@sky.com

## WEBSITE MANAGER

Mrs Sarah Ward 01372 383350  
sarwar\_63@hotmail.com

**[www.micklehamchurch.org.uk](http://www.micklehamchurch.org.uk)**

*For information about services for other  
denominations see website pages.*

*Search on 'Churches Together Mole Valley'*

## PARISH REGISTERS

### SERVICE OF THANKSGIVING

19<sup>th</sup> October Walter Alfred Leopold Buse

### BAPTISM

5<sup>th</sup> November Leo John Moss, son of Paul and  
Helen Moss, brother to Sienna



# Calendar

DECEMBER

|    |                                     |   |
|----|-------------------------------------|---|
| 2  | Saturday                            | 9.30 a.m.                                 |
| 3  | ADVENT SUNDAY                       | 8 a.m.<br>9.45 a.m.<br>11 a.m.            |
| 10 | 2 <sup>nd</sup> SUNDAY OF ADVENT    | 8 a.m.<br>10 a.m.<br>11.30 a.m.           |
| 15 | Friday                              | 8 p.m.                                    |
| 16 | Saturday                            | 5 – 10 p.m.                               |
| 17 | 3 <sup>rd</sup> SUNDAY OF ADVENT    | 8 a.m.<br>10 a.m.<br>6.30 p.m.            |
| 19 | Tuesday                             | 6 p.m.                                    |
| 21 | Thursday                            | 7.30 p.m.                                 |
| 22 | Friday                              | 7.15 p.m.                                 |
| 24 | CHRISTMAS EVE                       | 8 a.m.<br>10 a.m.<br>4 p.m.<br>11.30 p.m. |
| 25 | CHRISTMAS DAY                       | 8 a.m.<br>10 a.m.                         |
| 31 | 1 <sup>st</sup> SUNDAY OF CHRISTMAS | 8 a.m.<br>10 a.m.                         |

JANUARY

|    |                                       |                                 |
|----|---------------------------------------|---------------------------------|
| 7  | 1 <sup>st</sup> SUNDAY AFTER EPIPHANY | 8 a.m.<br>10 a.m.               |
| 14 | 2 <sup>nd</sup> SUNDAY AFTER EPIPHANY | 8 a.m.<br>10 a.m.<br>11.30 a.m. |
| 20 | Saturday                              | 9 a.m.                          |
| 21 | 3 <sup>rd</sup> SUNDAY AFTER EPIPHANY | 8 a.m.<br>10 a.m.               |
| 22 | Monday                                | 3 p.m.                          |
| 24 | Wednesday                             | 7.30 p.m.                       |
| 27 | Saturday                              | 9 a.m.                          |
| 28 | 4 <sup>th</sup> SUNDAY AFTER EPIPHANY | 8 a.m.<br>10 a.m.               |

# of Events

## EMBER

Garden Shed Wreath-making Workshop.  
Village Hall

HOLY COMMUNION Order 2  
Christingle Workshop  
Christingle Service – note time 11 a.m.

Holy Communion Order 2  
Holy Communion  
Morning Prayer (CHAPEL)  
Choral Society's Carol Party. Village hall  
Pop-up Pub at Westhumble Chapel

Holy Communion Order 2  
Holy Communion  
Service of Lessons and Carols  
Carolling in the Westhumble Chapel Ruins  
Ex-Crew members get-together.

The Stepping Stones  
Carol singing in the pubs starting at  
the Stepping Stones  
Holy Communion Order 2 in church  
Holy Communion  
Crib Service procession from the junction of  
Adlers Lane, Burney Road and Chapel Lane  
Midnight Communion

NO SERVICE  
Holy Communion



Holy Communion Order 2 (subject to change)  
Holy Communion (subject to change)

## JUARY

Holy Communion Order 2  
Holy Communion  
Holy Communion Order 2  
Holy Communion  
Morning Prayer (CHAPEL)  
Men's Breakfast. Running Horses

Holy Communion Order 2  
Holy Communion  
Tea@3 at Angela Ireland's  
Garden Shed talk on Garden Design.  
The Stepping Stones  
Women's Breakfast. Running Horses

Holy Communion Order 2 (CHAPEL)  
Holy Communion

## MEMBERS OF THE PAROCHIAL CHURCH COUNCIL

James Aarvold John Banfield Carole Brough Fuller  
Mark Day Jenny Hudlass Elizabeth Moughton  
James Riches Richard Siberry  
Amanda Wadsworth Simon Ward  
Paul Wates Anne Weaver Colin Wylde

## TOOLS WITH A MISSION (TWAM)

[www.twam.co.uk](http://www.twam.co.uk)

TWAM is a Christian charity committed to the recycling and refurbishment of tools which then can provide a means for poorer people in developing countries to learn a trade and be able to support themselves and their families. With this practical help, thousands of young men and women have benefited from the skills they have learned. They need:

- garden forks & spades, saws, hammers, drills pickaxes etc
- sewing or knitting related tools, thread, zips, scissors
- embroidery items, fabric and sewing machines
- wool and knitting needles, patterns
- portable typewriters, printers and laptops

If you have any of the above which could be used to help someone to have a better quality of life and hope for the future, please contact Carole Brough Fuller: 01737 842918 [cbroughfuller@btinternet.com](mailto:cbroughfuller@btinternet.com)

## HELPING HANDS

INCLUDING FOOD FOR FRIENDS

*A service for all residents of Mickleham and Westhumble*

Examples of services we offer:

- Transport for visits to doctor's surgery or hospital
- Essential shopping / collection of prescriptions
- Changing library books
- Small tasks: eg changing fuses, altering clocks etc
- Dog walking / care of pets
- Visiting / befriending
- Home-cooked meals for local families going through difficult times

Requests to Mary Banfield 01372 373912  
or leave a message on answerphone.  
Callers will be contacted within 24 hours

*More helpers needed – please contact  
Mary if you can spare some time.*



# Community Directory

Continued from page 13

MICKLEHAM & WESTHUMBLE BOOK CLUB  
Mrs Bernice Bailey 01306 741310  
bpbailey\_uk@yahoo.co.uk

MICKLEHAM & WESTHUMBLE CRICKET CLUB  
Team Secretary – Will Dennis 01372 372684  
will@micklehamhallfarm.co.uk

MICKLEHAM & WESTHUMBLE HORTICULTURAL SOCIETY  
Chairman – Mrs Judy Kinloch 01372 375358  
www.surreycommunity.info/mwhs mail@jkinloch.plus.com

MICKLEHAM AND WESTHUMBLE LOCAL HISTORY GROUP  
Chairman – Ben Tatham 01306 882547  
ben@thetatham.co.uk

MOLE VALLEY DISTRICT COUNCIL 01306 885001  
Councillor – Duncan Irvine 07738 384287  
duncan.irvine@molevalley.gov.uk

THE ARTS SOCIETIES (FORMERLY NADFAS)  
Betchworth – Miss Mary Venning 01306 883301  
Dorking – Mrs Sue Tatham 01306 882547  
Leatherhead – Mrs Sarah Sheridan 01306 883699

ST MICHAEL'S CHURCH OF ENGLAND (A) INFANT SCHOOL 01372 373717  
info@stmichaels-dorking.surrey.sch.uk

Friends of St Michael's School  
Co-chairs Danielle Morrison and Debbie Turner  
friendsofstmichaels2017@gmail.com

ST MICHAEL'S COMMUNITY NURSERY  
WEEKDAY MORNINGS – MICKLEHAM VILLAGE HALL  
Supervisor – Mrs Hilary Budd 01372 361021

SURREY COUNTY COUNCIL 03456 009 009  
Councillor – Mrs Hazel Watson 01306 880120  
hva.watson@btinternet.com

SURREY WILDLIFE TRUST 01483 795440  
info@surreywt.org.uk

WESTHUMBLE RESIDENTS ASSOCIATION  
Chairman – Holly McLaren 07887 660129  
westhumble.residents@gmail.com

WESTHUMBLE NEIGHBOURHOOD WATCH  
Lead Co-ordinator – David Allbeury 07860 227451  
westhumble.neighbourhood.watch@gmail.com

## ADDITIONAL CONTACT INFORMATION

CITIZENS ADVICE  
Dorking – Lyons Court 0844 4111 444  
Leatherhead – Swan Mews, High Street 0844 4111 444

POWER CUT HELPLINE 0800 783 8866

CRIMESTOPPERS 0800 555 111

POLICE  
Non-emergencies 101  
(often quicker to make online report) <https://report.police.uk/>

Neighbourhood Specialist Team – Dorking Rural East

PCSO 8761 Dave Sadler  
PCSO 15904 Sophia 'Manelfi' To contact a member of the team call  
PC 2799 Sue Gargini 101 and your call will be put through.  
General enquiries molevalley@surrey.pnn.police.uk

## Babysitting by local teenagers

Chris Rowland 01372 376712  
Freya Pearce 01306 884724  
Olivia Parkin 07887 367850  
Maisy Presley 07720 657327  
Isabella Pererira 07515 489067  
Issy Nash 01306 742762  
Ailsa McNaughton\* 01306 887408  
Patrick Moran 01306 640043  
Katie Light 01306 881953  
Ellie Kim 07773 395575  
Ailsa Graham 01306 889855  
Anna Forti 07557 964530  
Alexa Dewar 01306 884744  
Emily Brewer 01306 883793  
Philomena Ala 01306 885767  
Delphine Ala 01306 885767

\* In holiday time only

*If you would like to add your  
name to this list, please get in  
touch with the Editor.  
No charge.*

## Advertising in the Parish Magazine

Please contact the Editor.

Small ads: a nominal fee is  
charged for ads where items or  
services are bought or sold.

We have been advised to print  
the following reminder:  
*We cannot guarantee the  
quality of the goods and  
services offered by our  
advertisers.*



# Kerry McCullough

## 1977-2017

Kerry McCullough (nee Norris) was born in Chertsey in 1977. After a brief stint in Bedford she grew up in Cobham, Surrey. Kerry loved all animals, and especially horses, from an early age and dedicated her life to being with and looking after them. She was devoted to them, saved many and found homes for many more.

Kerry met me at an early age and we shared 22 years of happiness together. We moved to Dell Close, Mickleham in 2005 where Kerry quickly became a well-loved member of the community.

What was extraordinary about Kerry was her love of life, her compassion and her ability to connect with other people. She touched many lives.

Her life was tragically cut short in September 2017 aged 40 after a long illness. Kerry inspired many with her strength and courage as she refused to be defined by the illness which she



Kerry with 'Arthur' who she rescued as a calf

endured from the age of 27. She will be greatly missed. Andrew McCollough

*After a private cremation, a service was held for Kerry at St Michael's and All Angels Church, Mickleham on 9<sup>th</sup> October. We send our love and sympathy to Andy.*

## Your Parish Magazine

### Sue Tatham writes...

First, many thanks to everyone for their lovely get-well messages during my recent illness. And a huge thank you to Charlotte Daruwalla who stepped in and edited the November magazine, although it was not her turn. (We usually edit alternate issues.)

Recent events have highlighted the need to recruit some new staff members to ensure that the magazine survives. We have been discussing how various administrative tasks can be shared around, and have identified two areas on the editorial side requiring urgent action. First, we need help to gather news from both Westhumble and Mickleham so that we can ensure that the contents are up-to-date and

accurate. This would not necessarily involve writing articles, it is more about keeping us informed about things that are happening that might make an interesting item in the magazine. Of course, we welcome offers of articles as well.

Most of all however, we need to find someone who has desktop publishing skills or someone who is reasonably computer literate who would like to learn how to do desk top publishing. It is a very useful skill to have.

If you value the magazine and want it to continue, we need your help. If any of the above roles appeal to you, please contact me on 01306 882547 or sue@thetatham.co.uk



## Do you remember Philipp?

In 2012 a young German, Philipp Heckmann-Umhau spent a year in Mickleham as a National Trust volunteer at Warren Farm, before he went up to King's College Cambridge to read architecture. During his time here many of us got to know him as he sang with Mickleham Choral Society and contributed articles for the National Trust newsletter. He went up to King's in autumn 2013 and that Christmas we were delighted to see him again on TV as he read one of the lessons on 'Carols' from King's'.

Kingsman John Lowes spotted in the *King's Parade* that Philipp has won a prestigious international prize for his dissertation, *Stadtbildung – Bildungsstadt, The Transformation of Munich under Ludwig I of Bavaria (1786-1868)*.

The 2016 Undergraduate Dissertation Awards, which recognise excellent research and original work across the sciences, humanities, business and creative arts, received 5,514 entries from undergraduates of 121 nationalities in 244 institutions.



## The Pop-up Pub is Back

Saturday  
16<sup>th</sup> December  
5 to 10 p.m.

Westhumble Chapel

Come and enjoy a glass with old friends from the village and perhaps make some new ones! There will be beer and mulled wine and possibly even some sausage rolls.

Many thanks to everyone who has helped to increase our supply of strong plastic bags for MPM deliveries. Please keep them coming.

# Notes from Mickleham Parish Council

**A**lterations to the lighting at the Circle Housing Association building in Swanworth Lane have prompted comments from residents who are concerned that it has become dangerous to walk there at night. It appears that the light-sensors now have only a limited range and do not come on for people walking in the lane which leaves them vulnerable to stepping into one of the many potholes there.

Mickleham Parish Council has asked Circle Housing if they can look at the situation again and re-instate the light at the back of the building which used to illuminate the car park area.

Two new waste bins – equipped with lids – have been installed at the

Children's Recreation Ground and the Parish Council will follow that initiative by replacing the noticeboard in Old London Road opposite The Running Horses public house.

Councillors want to introduce a bigger noticeboard which will incorporate a section for Parish Council business and a separate section for other organisations to pin up their notices.

At their November meeting, the Parish Council was given a presentation from Nikolai Johnson, Mickleham resident and a student at Imperial College, who is a strong advocate of electric vehicles. He believes Mickleham should encourage Surrey County Council to

take advantage of the grants on offer for charging points and identified areas of the village, such as the village hall car park and Swanworth Lane, where they could be situated.

Grants (covering 75% of the costs) would be available for up to £7,500 per charger for on-street charge points though the actual cost might be considerably less than that. Nikolai said the way forward was for a number of investors to get together and create a company which would manage the project. Chairman David Ireland thanked Nikolai for his research and presentation and said that he had raised significant issues which would otherwise not be faced.

Trevor Haylett, Clerk



## NT Leith Hill Place at Christmas

11 a.m. and 3.30 p.m. we will be open for carol singing, informal concerts from local musical groups and homemade festive cakes and bakes in the seasonally decorated house. Normal admission fees apply, with free entry for National Trust members. For more information please call us on 01306 711685 or go to our website: [www.nationaltrust.org.uk/leith-hill-place](http://www.nationaltrust.org.uk/leith-hill-place).

We will be opening the house again from 23<sup>rd</sup> March 2018 on Fridays, Saturdays and Sundays from 11 a.m until 5 p.m,

last entry at 4.30 p.m. Over the closed period we will be working on refreshing the display of Ralph Vaughan Williams material in conjunction with the Vaughan Williams Society. In addition we are starting a three year trial period of different activities at Leith Hill Place, in order to realise the full potential of the house. More details to follow.

We wish you all a very Merry Christmas and a Happy New Year and hope to welcome you to Leith Hill Place in 2018.

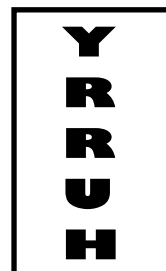
**L**eith Hill Place is now officially closed for the season, but we are opening for one last weekend before the end of the year. On Friday 8<sup>th</sup>, Saturday 9<sup>th</sup> and Sunday 10<sup>th</sup> December between



## BRAIN TEASER

Say what you see.

Can you translate this diagram into words?



Answer on page 26.



# Westhumble Bonfire and Fireworks

## *I had the best seat...*

Photograph: Ben Tatham

I was fortunate enough to witness a rather extraordinary event last night. Or should I say unfortunate? Since I write this from the skies, let me tell you more of my short but exhilarating existence. As is often the case with you humans, life started as an afterthought, about a year ago, this time in the Lagarrigues' mind. Such thoughts tend to have a long gestation period however and it was not until October this year that I finally became flesh. Though not quite flesh as you know it.

I first began growing just legs, enough to fill a rather effeminate pair of 21<sup>st</sup> century denims actually, but surely no one would notice 10 metres away, so long as the rest of my body would exhale testosterone and masculine composure. Stuffed with overused turtlenecks and underused Metro pages, my lower limbs were initially rather limp, yet that would surely do just fine as a first attempt; the Lagarrigues had got going and I got growing. Divide and conquer some ancestors used to say. Not the simplest of tasks, but the Forsyth daughters somehow succeeded in *papier-mâché* my head together, complete with ears, nose and eye sockets. Not sure whether I should be content or not given the circumstances to come forth, I was subsequently flanked with a neat and subtle Mona Lisa grin. That and my carefully painted eyelashes, let alone my leg profile,

begged me to wonder whether I was meant as a lady after all. Never mind, at last I was alive, cravat and orderly hat would complete my attire, splendidly dressed as an imminent Monarch. Time for the Bairds to step in: big chest, wide shoulders, smartly wrapped up in a waistcoat, disposable latex fingers, my upper body finally looked like that I expected. Now was my Frankenstein time, becoming one from many pieces through many stitches. I ended up rather tall, and no way would my flimsy legs do me justice. More stuffing, – pine femurs and shin bones, not quite Usain Bolt but surely good enough this time, my smile would be the centre of attention after all.

It all finally unravelled on 4<sup>th</sup> November: sitting in my sedan chair (or was it a wheelbarrow?), I descended Adlers Lane followed by my disciples, arrived at Coronation Square and was carried to the best seat, high up on the tallest man-made throne – I would certainly not miss a thing. And this is when the realisation hit me hard: all these people



*The Guy and friends*

were not cheering with me but at me, the smoke was not that of cigars but coming from my melting moccasins. I was no King after all, but plotting to assassinate him. No time to think further, the fire certainly caught quickly this year. As I flew into clouds of ash, I could only admire the sublime fireworks from above. I had the best seat after all, what a night. Well done citizens of Westhumble, you've done it again.

*Guy Fawkes*

More than 450 people attended this year's bonfire. Is this a record? Many, many thanks to everyone who helped make this such a successful event, chiefly Bonfire Architect Mike Weller and his helpers, Neil Mason who supplied refreshments for the bonfire builders, the families organised by Justine Lagarrigue who built the splendid Guy (Justine also acted as intermediary for the above message), Lucy Mason and Anne Weaver for feeding the hungry masses on the night. And of course special thanks to Neil Mason, ably assisted this year by Rob Machin, for the brilliant firework display. A magical evening!

## Mickleham & Westhumble Local History Group

AGM followed by

**Time Gentlemen, Please!**

**The Story of Dorking Pubs**

*An illustrated talk by David Langford*

**Friday 16<sup>th</sup> February**

**7:30 for 8 p.m. Mickleham Village Hall**



# NEED A CARER?

Highly experienced, qualified  
carer available

Hours to suit your needs

Cheryl 07810 881 267



Extensions and alterations often require a  
**Structural Engineer**

**Robert Wynter & Partners Ltd**

**01306 879875**

Book House, Vincent Lane  
Dorking RH4 3HW

## Get IT Fixed, Get IT Connected

Expert Repair & Maintenance



Brockham based. No call out charges. Fully transparent quotations  
with no hidden costs. We make technology work for you.

Call us now on  
**01737 845980**

ChalkHill Systems  
[www.chalkhillsystems.co.uk](http://www.chalkhillsystems.co.uk)



## Painting

Decorating, tiling,  
Curtain & blind hanging,  
Wallpapering,  
Furniture assembly etc.

- Fully insured
- Free estimates
- References available

Tel: Martin 07770 441 201



Vivien Cresswell  
Made-to-measure Soft Furnishings

Curtains, Roman Blinds, Cushions



Extensive range  
of fabrics

**01737 843858**

[www.cresswellscurtains.co.uk](http://www.cresswellscurtains.co.uk)

**Mike Palmer**

**Electrical Services**

Part P registered electrician



From additional lighting and sockets  
to complete rewires

Fully insured Registered with the NICEIC

07866 930483 [mike@mikepalmer.biz](mailto:mike@mikepalmer.biz)

Boxhill Way, Strood Green, Betchworth RH3 7HY



## KING WILLIAM IV

Thanks to all those who turned up for the fireworks, I think it was our best one so yet, if you log on to the King William IV facebook page you can see some snippets.

Thanks again to our parish priest Malcom and Sue who recently completed their last quiz for us. Thanks to them great fun has been had over the years and we wish them an enjoyable well- deserved retirement. Maybe come back one time for an encore?

During December roast turkey with all the trimmings will be on our Sundays roasts menu. Or come over for mince pies and mulled wine, which will be available throughout the month and great for the carol singing on the 22<sup>nd</sup> December.

All of us at The King Willie wish everybody a very MERRY CHRISTMAS and a HAPPY NEW YEAR - hope to see you soon.

Eamonn, Anne and the team

THE KING WILLIE WILL BE CLOSED ON MONDAY 18<sup>TH</sup> DECEMBER AND FROM MONDAY 8<sup>TH</sup> THROUGH WEDNESDAY 24<sup>TH</sup> JANUARY.

Byttom Hill, Mickleham 01372 372590 [www.thekingwilliamiv.com](http://www.thekingwilliamiv.com)

# Garden Shed Events

## Soil Science

A good showing gathered at the Stepping Stones in October and, after a visit to the bar, we were given a illustrated talk, *Soil Scientific* by soil scientist and Westhumble resident, Katya Dubrovskaya. She helped us to appreciate the structure of soil at the 'particle' level and explained the chemical composition of soil, the importance of the various layers, depth, ground vegetation and the effects of the weather. Her last illustration referred to the 'lucky' pocket that is Westhumble in the Mole Valley area, similar to the soil where Katya grew up in the Ukraine. Apparently, we are very fortunate – but we knew already that! Thanks to Katya for her talk and to Ben Tatham, Projectionist Supreme.

## Improving Flower Beds and Borders

In November we met for a talk, *Improving your Flower Beds and Borders* given by John Clachan. This is the second time that John has spoken on a gardening topic for The Garden Shed, and once again we all had an interesting and informative talk. The first subject was on your choice of garden style, formal or informal? He went on to explain about the correct sizing of beds, followed by plant structures and how one can improve the plant choices by looking at size and shape. John suggested plants that would give the garden more than one season of interest. We were shown how to harmonise our gardens by looking at



the shape and colour of leaves. People left enthusiastic to try his ideas in their own gardens. The evening finished with a Flower Quiz and there were with three winners. There was also an opportunity to share plants, cuttings, seeds, tools and ideas. A lively evening was had by all. Happy Gardening, till our next talk in January.

## Christmas Wreath Making and Table Decoration Workshop

Saturday 2<sup>nd</sup> December - 9.30 a.m. to 12 noon - Mickleham Village Hall

Maximum number of 24 places available at £20 pp to make a wreath or a table decoration

## January talk on Garden Design

by Janette Dollamore, garden designer

Wednesday 24<sup>th</sup> January

7.30 p.m. at The Stepping Stones Pub, Westhumble

Tickets £6 at the door

For more information: Pauline Davis 07759 646353 or paulinemdavis@gmail.com

Susie Gowenlock 07768 923088 or susiegowenlock@gmail.com

[www.surreycommunity.info/mwhs](http://www.surreycommunity.info/mwhs)

07871 051661 / 01372 458616  
[timskerrittgroundworks.co.uk](http://timskerrittgroundworks.co.uk)

**TimSkerritt**  
LANDSCAPE & GROUNDWORKS

## Turn your vision into a reality

Tim Skerritt Landscape & Groundworks offers a comprehensive range of services to both commercial and domestic clients across Surrey.

From hard landscaping to extensive site excavations, we offer a high quality, honest, reliable and competitively priced service, guaranteed to meet all your needs. Contact us today to find out more.

## Foot Care Focus

- Toenail cutting & filing, Diabetic foot care & advice
- Reduction and removal of hard skin, cracked heels & caluses
- Reduction of thickened nails and fungal infections
- Reduction & removal for corns & verrucas
- Treatment of ingrowing toenails & athlete's foot
- Clinic treatment or home visits available

APRIL STANDISH TCFCdip  
Foot Care Practitioner  
07397 154 000 [april@footcarefocus.co.uk](mailto:april@footcarefocus.co.uk)



## Domestic Appliance Repairs

30 years' experience repairing and installing  
all gas and electric domestic appliances



- Cookers, Microwaves
- Dishwashers
- Washing machines
- Fridges / Freezers
- Water coolers
- Coffee machines
- Tumble dryers

Contact: Andy 07895 719 706  
kirk21stcentury@aol.com



## GARDENING

£15 per hour – Free quotations

– SERVICES –

Gardening Maintenance

Hedge Trimming Specialists

Garden Design

Soft Landscaping

07740 308 490 contoursgardening@outlook.com  
www.contourgardening.com

## Julie Watts Family Law



AN AFFORDABLE AND EXPERIENCED PROFESSIONAL  
ALTERNATIVE TO TRADITIONAL SOLICITORS

- Divorce • Arrangements for children • Finances
- Court Proceedings

PROUD TO PROVIDE A DIFFERENT KIND OF SERVICE

- Affordable fees • Straight-talking advice
- Practical, real support

Contact me for a consultation

07808 572157 juliewattsfamilylaw.co.uk

## Mole Valley Mowers



Open  
Monday to Friday  
8 a.m. - 5 p.m.  
& Saturday  
8 a.m. - 1 p.m.

All leading makes of lawn mowers  
& garden tractors catered for

Reasonable rates

Free estimates & friendly service

Paul White Bookham 01372 458008

## Need help with your accounts?

If you run your own business you will appreciate how difficult it  
can be to keep up with your accounting paperwork.

However, meeting deadlines and understanding the financial  
health of your business are crucial to avoiding penalties and  
ensuring that the hard work you put in pays off where it matters  
– in your pocket

- Tailored accountancy local to Dorking – saving you time
- Fixed fees – saving you money • Free Xero software – simple invoicing

Call today to arrange a  
free no-obligation  
consultation

01737 652 852

esther@a4cgroup.co.uk  
natasha@a4cgroup.co.uk



## Treeline<sup>®</sup> Services Ltd

Tree Health Care Specialists



Chadhurst Farm, Coldharbour Lane, Dorking, Surrey RH4 3JR

Tel: 01306 741800 Fax: 01306 885150

Email: james@treeline.co.uk www.treeline.co.uk

## Dorking Pest Control Services

Local Authority Approved Contractors



Our Services include: Wasps, Bee Swarms, Hornets, Rats, Mice,  
Squirrels, Fleas, Flies, Ants, Cockroaches, Bed Bugs,  
Rabbits, Moles, Foxes and Deer



• Domestic, Commercial and Industrial • Contract Work • Preventative Control Programmes

Experts in pest control throughout Surrey

Office: 01306 743001

Ivor: 07710 117491

Chris: 07971 519415

www.dorkingpestcontrol.com

# New Sports Hall Progress Report



Work on the new Box Hill School Sports Hall is progressing well, the roof is now complete, and the exterior cladding is 75% finished, many of the interior walls are all up with their splash coat and glazing of the windows has now started, our underfloor heating is completed with temporary boilers working to test it. We are on target to have the building works finished in the spring of next year, and are looking forward to welcoming the villagers of Mickleham for a tour of the new facilities.

The Box Hill School drama department presents

## THE GREAT GATSBY

### 6<sup>TH</sup>—8<sup>TH</sup> DECEMBER

*Please join us for a little party at Gatsby's mansion*

The show follows a cast of characters living in the fictional town of West Egg on prosperous Long Island in the summer of 1922. The story primarily concerns the young and mysterious millionaire Jay Gatsby and his passion and obsession for the beautiful former debutante Daisy Buchanan. A night of drama, dancing and jazz, which is being performed by our talented students and as guests at Jay Gatsby's party our guests will be seated at tables, served drinks and be given the opportunity to dance to the Jazz Band in the interval.

Tickets: Adult: £15 / Student: £7.50  
Available from the Box Hill School reception



## MICKLEHAM PLAYGROUND AND NURSERY PUB QUIZ

Mickleham Playground Association and St Michael's Community Nursery would like to thank everybody who supported the Pub Quiz held on 16<sup>th</sup> October at the King William IV. The evening was a huge success with £634 raised for the two charities.

Special thanks needs to go to The King William IV for hosting the event and donating the prizes, Sarah Parfitt for her brilliant (and challenging) questions and Martin and Kate Cox for being an excellent quiz master and score keeper.



## VOLUNTEERS NEEDED FOR FAST-GROWING LOCAL YOUTH FOOTBALL LEAGUE

The South Surrey Youth Football League provides a unique, rapidly growing, framework within which young people of all skill levels in South Surrey can gain maximum enjoyment and benefit from playing football. Run entirely by volunteers, we urgently need to add to our management and admin team in a variety of roles to help cope with our continued growth. If you are willing and able to give a few hours a week to assist us in providing this invaluable service for local youth we would love to hear from you.

For more information, please contact Vincent Wells, League Chairman

07802 777418 vmbwells@gmail.com

# TONY WINCH

## CARPENTER, JOINER & CABINET MAKER

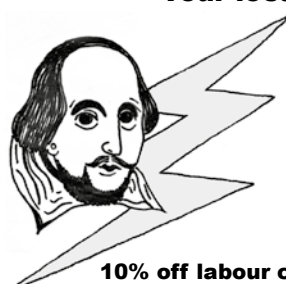
[www.tonywinch.com](http://www.tonywinch.com)

01306 742373

07969 016 924

# Shakespeare Electricals

Your local electrician



Fully qualified  
and insured



10% off labour costs with this advert

Call Matthew on 07783 553880

[www.shakespeare-electricals.co.uk](http://www.shakespeare-electricals.co.uk)

# PLASTERING

John Hooper  
over 30 years' experience

Work includes float and sett, skimming, screeding,  
traditional rendering, modern coloured rendering  
(monocouch) cornicing  
from small ceilings to large newbuilds

07946628190 01737423489

[j.hooper-plastering@hotmail.co.uk](mailto:j.hooper-plastering@hotmail.co.uk)



# Building Plans

For home improvements & extensions

Including planning & building regulations

Fast efficient service at competitive rates

**MICHAEL LLOYD**

CEng MICE MINT

For free consultation:

Phone: 01483 205479 or 07958 791 402

Email: [michael@lloydplanning.london](mailto:michael@lloydplanning.london)

# R A BUTLER

INTERIOR AND EXTERIOR

## PAINTING & DECORATING

OVER 30 YEARS' EXPERIENCE



**BUILDING  
REPAIRS  
UNDERTAKEN**



PATIOS, DECKING ETC NO JOB TOO SMALL

LOCAL REFERENCES IF NEEDED

01372 372586 / 07776 256131

# OSTEOPATH

NICK WOOLLEY

BSc (Hons) Ost

Osteopathy for all ages

Also offering Cranial Osteopathy and  
Myofascial Acupuncture needling treatments

For advice or an appointment

01372 379270

[www.Headleyosteo.com](http://www.Headleyosteo.com)

# COOK

## ARBORICULTURAL LTD

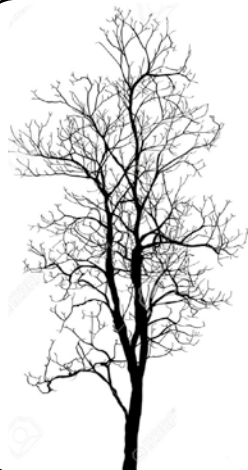
### Professional planting, Tree surgery, Surveying & Remedial work in Surrey

Tree removals ~ Stump Grinding ~ Planting  
Tree reductions & pruning ~ Tree health & development site surveys

For a free, no obligation quote please get in touch:

07739 681 706 alex@cookarbor.co.uk [www.cookarbor.co.uk](http://www.cookarbor.co.uk)

Michaela's Cottage, Fredley Park, Mickleham, Dorking RH5 6DE







# Ruling the Roost down at the nursery



**F**irstly, a big thank you to everyone who came to support another successful quiz night at the King William in October. The pub did a great job of hosting all the quizzers who came to pit their wits; it was a really fun evening (and very tricky!). The nursery team gave a good account of itself but alas didn't end up victorious. We'll try again next time!

At the nursery itself, we are in the midst of another busy term as this time of year provides us with lots of opportunities to link the many seasonal celebrations with our learning activities.

You may have spotted staff and parents alike scouring the village's horse chestnut trees looking for conkers. With

our stash, plus requisite craft items including pipe cleaners and beads, the children have made some great conker 'people'.

Soon after, Halloween arrived; while we do not actually focus on Halloween itself at the nursery, we incorporated some of the more light-hearted elements, for example enjoying some well-known stories such as *Meg and Mog* and *Room on the Broom*. The children also loved playing with homemade rhyming potions, slime and dressing up as story characters.

Hot on the heels of Halloween came 5<sup>th</sup> November. While there wasn't any sign of gunpowder, treason or plot in Mickleham, we did explore new painting techniques to create some firework type pictures, and at the end of the week we toasted bread and marshmallows. Yum!

On a more sombre note, we also paid a visit to the War Memorial at St Michael's Church. We talked to the

children about why we wear poppies at this time of year and tried to answer any questions in a simple and factual way. Our underlying message, one we feel the children will understand, was 'We wear poppies to say thank you to the soldiers who help to keep us safe.'

The last big event remaining this year is the Christmas Fair which, at the time of writing, is almost upon us. This is our most important fundraiser of the year, so thank you for your continued support with this event. I know the adults love it almost as much as the children!

Finally, we are delighted to advise that our chicken coop is once again full as five new chickens have joined St Michael's. One has been named 'Chestnut', and for a small donation you can be in with a chance to choose the winning names of Chestnut's friends – just contact Hilary at the nursery if you have name suggestions which won't ruffle any feathers. No fowl play, please!



Above: Visiting the War Memorial. Top right: Potion making  
Bottom left: Developing fine motor skills by hammering golf tee's into a pumpkin

**Thank you to Gill and Jason Wilson for their very generous gift of a bench for St Michael's churchyard, as seen in the photograph above.**



## Mickleham Village Hall, Dell Close

Weekdays 9.15 a.m. - 12.15 p.m. (term time)

**WITH OPTIONAL LUNCH CLUB**

On Mondays and Thursdays there is the option for children to stay until 2.45 p.m.

**Maximum 26 children per session**

• playing naturally • learning naturally

We offer an excellent range of pre-school activities for 2½ to 5 year-olds where they can learn through play in an informal, friendly atmosphere.

Contact us for more information about admissions  
01372 361021 [www.stmichaelscommunitynursery.co.uk](http://www.stmichaelscommunitynursery.co.uk)



## St Michael's Youth Group

**School years 7-9 for 11-to 14-year olds  
on alternate Friday evenings during term time**

**Mickleham Village Hall**

**7.15 - 8.30 pm**

**For more information contact Jonathan or Sarah Blake 0778 7126 966**

**An opportunity to meet up with friends and join us for games & fun!**

## Tuesday Toddles

A new friendly group in Mickleham for kids aged 0-5 years to play along side their Childminder or Registered Nanny  
Mickleham Village Hall

Every Tuesday. Term time only 9.30 - 11.30 a.m.

For more information please contact:  
Natalie 07790 318 653 or ask to join our closed Facebook group for Tuesday Toddles for regular updates.

Next term for Bugs: See website

Mondays: 11am and 1.30 pm  
Tuesdays: 10am, 11am and 1.30pm  
Session length: 45 minutes  
For more info or to register contact:  
[learningboxhill@nationaltrust.org.uk](mailto:learningboxhill@nationaltrust.org.uk)



## Denbies to host Mole Valley's first Parkrun

The organisation called parkrun stages free, weekly, 5km timed runs around the world. They are open to everyone and are safe and easy to take part in. Parkruns are not races, but participants are timed, and a record is kept so that they can log their progress. The launch is expected to take place in the new year. The runs will take place at 9 a.m. on Saturdays. A team of volunteers will be needed to help with these events, including marshals and organisers.



**BRAIN TEASER answer: HURRY UP**



# The Poppy Appeal Lest We Forget

November is a month for remembering and saying thank you. Once again here at St Michael's School we have proudly worn our paper poppies as a symbol of remembrance, making sure that we do not forget fallen service men and women killed in conflict. And of course we are only a tiny part of the big picture. Since 1921 armies of volunteers have picked up their collection tins and trays filled with poppies and offered them out into their communities in return for donations. The iconic paper poppies are now distributed throughout the nation in over 100 countries and the money raised is used to help support the vital work done by the Royal British Legion for the Armed Forces community.

One of the aims of the appeal is to bring communities together to raise funds and work as a team for this important cause. We have been very happy to be a part of this and could not have done it without the help of our Year 2 pupils, so we want to say a huge thank you to them and the people that bought their poppies from them.

Throughout the week before our Church Service the children learnt more about the significance of the poppy and made their own poppies and crosses. In Church we were able to think again about the soldiers who had fought in wars so that we could live in a more peaceful world and said thank you for keeping us safe.



**St Michael's  
School**

[www.stmichaels-dorking.surrey.sch.uk](http://www.stmichaels-dorking.surrey.sch.uk)



## Christmas at St Michael's

Our Christmas celebrations this year will begin with the arrival of the Christmas tree for the hall. The children will be making decorations for the tree in class and will be able to hang their decoration while we sing carols during Celebration Assembly. The children will start to collect coins for doing jobs at home for our Advent charity. This year we are raising money for Ilakiya; we sponsor her to attend school in Devakottai, South India. The Christingle Workshop will be held in St Michael's

School Hall on Sunday 3rd December from 9.45 to 10.45a.m. The magical Christingle Service will follow at 11 a.m. at St Michael's Church. The workshop and service are open to everyone and we hope as many people and children as possible will join us. On the 8<sup>th</sup> December the children will be able to come back to school for the 'Night Before Christmas Story Telling', they will be able to dress in their pyjamas and listen to stories with a Christmas theme. While the children are listening

to their Christmas stories their parents are invited to stay for a festive tipple and snack. Our Christmas productions are on 12<sup>th</sup> and 13<sup>th</sup> December at 1.45 p.m. in the school hall; everyone is welcome to join us for this lovely event. On 15<sup>th</sup> December we will decorate the hall and the children and staff will sit down together to eat Christmas lunch. Our festivities will end with Christmas parties for the children. We wish you all a very Happy Christmas.

Paula Bliss, Executive Headteacher

## New School Governor Needed

St Michael's governors are seeking a community governor with an understanding of finance who can join us in December and contribute to the strategic development of the school. It is with thanks that we have to reluctantly say goodbye to Duncan Irvine who has completed four years as a valued governor.

If you would like to know more about St Michael's governors please have a look at our website page  
<http://www.stmichaels-dorking.surrey.sch.uk/governors>

To have an informal discussion please contact Pat Hand, Chair of Governors,  
either by phoning the school 01372 373717 or email [phand@stmichaels-dorking.surrey.sch.uk](mailto:phand@stmichaels-dorking.surrey.sch.uk)

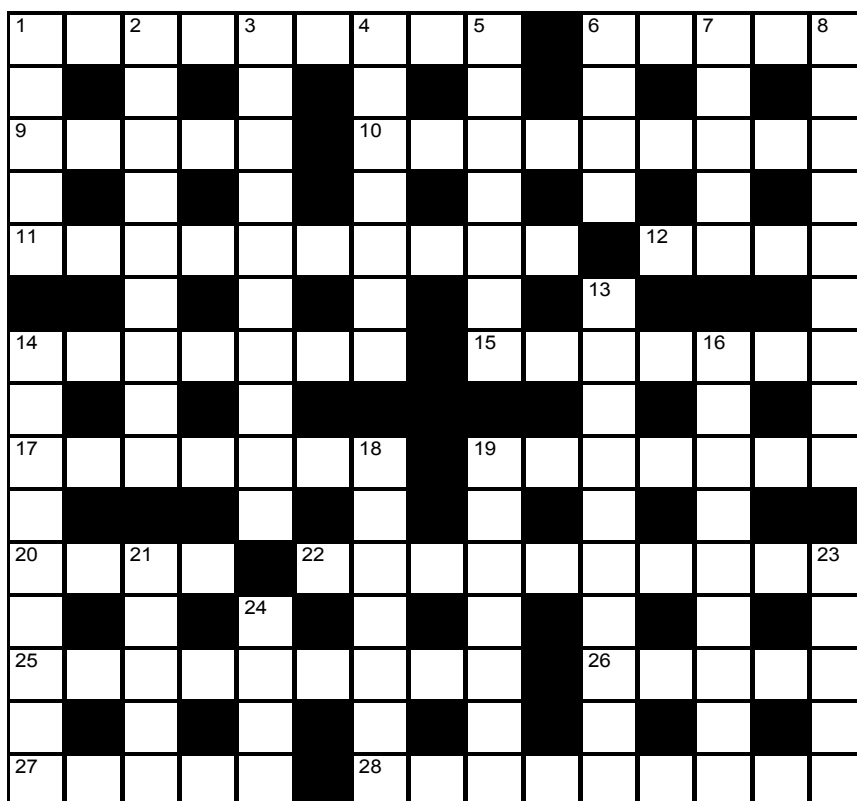


# Cryptic Crossword



## ACROSS

- 1 Hail is inert eggs dancing (9)
- 6 Promised O, for example, but in the end it's ten times bigger (5)
- 9 Do well for 40, say (5)
- 10 Wives of ten lords a-leaping (9)
- 11 Accompaniment to 9 ladies? (5,5)
- 12 Porridge is served in this (4)
- 14 Star of a 28 song croons in "Goose cooked without onions" (7)
- 15 14 has nothing, but still he's someone who kept cracking jokes (7)
- 17 Argues visitors to Box Hill could start being involved (7)
- 19 Explosive growths no longer double-barrelled after Brexit? (7)
- 20 Yellow and white nightie: the beginnings of a sign that it's time for bed (4)
- 22 These need a master - how about Ernie comes? (10)
- 25 Hat makes Sue Titham the parish magazine editor (3,3,3)
- 26 Marcus Aurelius is impassive when receiving 23 (5)
- 27/28 1 across when serving roast strangely makes my Mrs starchier (5,9)



## DOWN

- 1 Give gaudy top to Oliver for wanting more (5)
- 2 Odd but not a Brexiteer (9)
- 3 Dalek voter made cross and then became convinced (6,4)
- 4 Hold back the air, heavenly body! (7)
- 5 Cooking roasted pet goat's not wise without potatoes (7)
- 6 Don Revie was a great manager for keeping sight of things (4)
- 7 Was Lawrence a problem after unwrapping at Christmas? (5)
- 8 Bans princess taking drinks without whiskey (9)
- 13 Ho-ho! So super when husband is sent off to derelict institutions (10)
- 14 A method of organising U-boat pack? (9)
- 16 Cross that accidents in firm occur (9)
- 18 American holding can-opener to become someone who scoffs (7)
- 19 The top is more sugary with figure finally becoming fat in the middle (7)
- 21 Main ingredient of wine made by birthday boy (5)
- 23 Punches in the face for giving unimaginative presents (5)
- 24 Sorry, the queen's gone potty and red-faced (4)

ATLT

Photograph Ben Tatham



## SOLUTION TO THE NOVEMBER CROSSWORD

Across: 1 Pounds 4 Kisser 9 Quad  
10 Space suits 11 Hebron  
12 Feathers 13 Pterosaur 15 Pans  
16 Ante 17 Embarking 21 Ancestor  
22 Asthma 24 Mythopoeic 25 Lady  
26 Damned 27 Mystic

Down: 1 Prudent 2 Under 3 Desands  
5 Icecap 6 Southwark 7 Retorts  
8 Half-submerged 14 Rotherham  
16 Annoyed 18 Anarchy 19 Nomadic  
20 Staple 23 To let

Duncan John

**Neil A Mason**  
Established 1976



**All electrical & plumbing work undertaken**

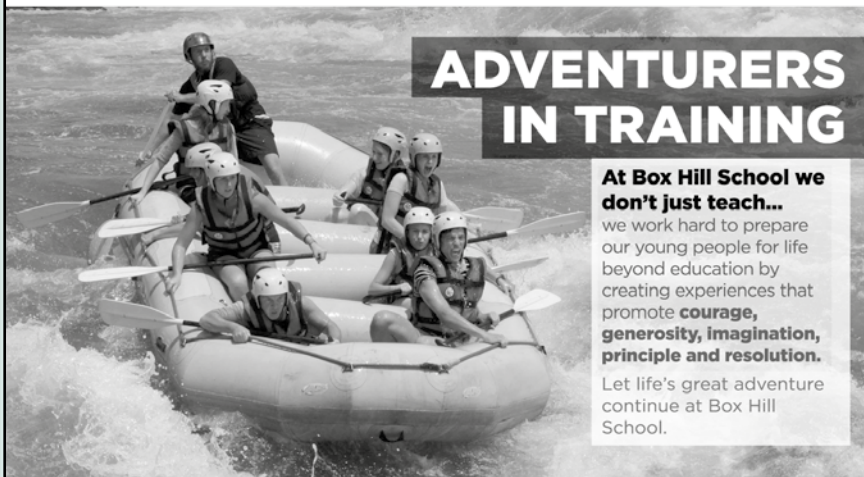
Inspections and Testing  
Extra Points, Rewiring etc  
Security and Emergency Lighting  
Temporary Power and Lighting Hire  
Public Address and Sound Systems  
Installed or For Hire  
Complete Bathroom and  
Fitted Kitchen Installation

**WESTHUMBLE**

Telephone: 01306 889073

# INSPIRATIONAL Box Hill School

for girls and boys aged 11-18



## ADVENTURERS IN TRAINING

**At Box Hill School we don't just teach...**

we work hard to prepare our young people for life beyond education by creating experiences that promote **courage, generosity, imagination, principle and resolution.**

Let life's great adventure continue at Box Hill School.

Telephone: **01372 373382**  
or email **admissions@boxhillschool.com**  
**www.boxhillschool.com**

## DAVID TOBITT CARPETS

**FINE CARPETS SUPPLIED  
AND FITTED**

*We have over 30 years' experience  
working in Dorking and the  
local area*

A comprehensive range  
of carpets available

We can bring samples  
to your home

Advice given on all  
types of carpet work



**WE TAKE A PRIDE IN  
WHAT WE DO**

**01306 885032**

[www.davidtobittcarpets.co.uk](http://www.davidtobittcarpets.co.uk)

## MARTIN BURGESS LANDSCAPE AND GARDEN DESIGN



CONSULTATION SERVICE FOR  
GARDEN PLANNING, PLANTING  
AND MAINTENANCE

01737 842289 / 07966 183395

## HART SCALES & HODGES SOLICITORS

*We have been serving the Dorking community since 1782 and are proud to support our local parishes*

Our services include:

- Buying and selling your home
- Extending your lease
- Commercial property
- Inheritance Tax planning
- Care fees and Asset protection planning
- Setting up a trust
- Wills and Probate
- Lasting Powers of Attorney
- Divorce Separation and Children
- Employment for employer and employee
- Litigation and dispute resolution
- Business advice

Please call us on 01306 884432 for a FREE initial consultation to discuss your requirements

[www.hartsscales.co.uk](http://www.hartsscales.co.uk)



6 en-suite rooms from £89 per night including breakfast

**OPEN**

Monday – Saturday: noon – 11 pm

Sunday: noon – 10.30 pm

**BREAKFAST** (open to non-residents) **SERVED**

Monday – Thursday: 7.30 – 9.30 am; Friday & Saturday: 8 – 10 am

**LUNCH & DINNER SERVED**

Monday – Thursday: noon – 3 pm & 6 – 9 pm

Friday & Saturday: noon – 3 pm & 6 – 10 pm

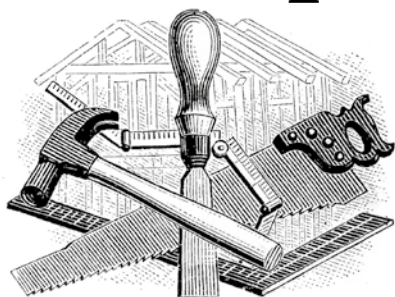
Sunday: noon – 6 pm

The Running Horses, Old London Road, Mickleham, Nr Dorking, Surrey RH5 6DU  
Call Us: 01372 372279 Email: [book@therunninghorses.co.uk](mailto:book@therunninghorses.co.uk)

# J S Wilson

Mickleham

## Carpentry & Building Services



Extensions ~ Conversions  
Refurbishments ~ Property Maintenance  
Fully guaranteed ~ Fully insured

*One call WILL solve it all*

Contact Jason on: 07761 926684 or 01372 379359  
[jswilsonconstruction@gmail.com](mailto:jswilsonconstruction@gmail.com)



RESIDENTIAL • COMMERCIAL  
AGRICULTURAL • SCHOOLS • ACOUSTIC  
HOARDING • GATES • SECURITY

RICHARDSON & BRADS FENCING LTD  
T: 01306 640 143 - 01483 414 74

E: [INFO@RBFENCINGLTD.CO.UK](mailto:INFO@RBFENCINGLTD.CO.UK)  
W: [WWW.RBFENCINGLTD.CO.UK](http://WWW.RBFENCINGLTD.CO.UK)

A: 83 SOUTH STREET, DORKING, SURREY, RH4 2JU  
UNIT 45 MARTLANDS INDUSTRIAL ESTATE, SMARTS HEATH LANE, MAYFORD, GU22 0RQ

# John Wadsworth

INDEPENDENT ESTATE AGENTS



CALL NOW FOR YOUR FREE VALUATION

**01372 450500**

[www.johnwadsworth.co.uk](http://www.johnwadsworth.co.uk) [sales@johnwadsworth.co.uk](mailto:sales@johnwadsworth.co.uk)

*A professional, efficient and friendly service*