

BLEASBY NEWS



BLEASBY WI ROUTES EXPEDITION COMPLETED!

OCTOBER 2015

TO LET

LAKE DISTRICT HOLIDAY COTTAGE

Borrowdale Road, Keswick

3 Bedrooms | Sleeps 6

Fully refurbished holiday cottage with gas central heating,
open fire place and private parking

Views overlooking the fells, front and rear gardens,
Superb location

**For further details please ring
01636 830209 | 07812 101303**

**A. Rickett & Son,
Bleasby
Builder & Contractor
Tel: 01636 830468**

Welcome to the October Edition of Bleasby News

In this month's edition we have results of the Intrepid Six's foray into Wales – their 'pilgrimage' to Anglesey, the birthplace of Britain's Women's Institute, under the title Routes to Roots. Read all about it in following pages and, if you missed the opportunity to contribute, I'm sure Monica, Rachael, June, Hazel, Nicola or Melanie would be only too pleased to take your money off you – all to aid Nottingham University research into childhood brain tumours.

What else has happened this summer here in Bleasby? Plenty of use has been made of the school field for informal sports activities – just a reminder that the field is only for the use of Bleasby children who have not yet reached the age of 14. And how lovely to see groups enjoying the Glebe Field in many informal ways – a haven in the historic and beautiful heart of Bleasby village. The newly planted commemorative oakwood in the Jubilee Ponds is doing well but keeping some of the JP working party very busy clearing away encroaching growth. More help needed please to keep our wonderful nature reserve in good health for local people and wildlife to enjoy. And, of course, our neighbouring town of Southwell has enjoyed another most successful music festival with glowing reports in the local press and in the Times!

We are very sorry to learn that Colin, our landlord at the Waggon and Horses, is leaving us. More on him further into this edition. Also we have had to say farewell to Lesley and Brian Fellows who have moved out of Northfield House – they are a couple who were very involved in the village, both of them in the local history society, Brian in work at the Glebe Field and the Jubilee Ponds, Lesley in the WI. They will be missed.

Please send your articles etc for December's Bleasby News by 16th November to:-

Rachael Andrew - Sutton House / pran@suttonhs.fsworld.co.uk or

Barbara Cast - Little Dower House / barbaracast@btinternet.com

Your Editors, Rachael, Barbara and Sophie

Welcome

We extend a warm welcome:-

To Goverton: the Slater-Davidsons have moved from Hawthorn Close to Wild Briars

To Hawthorn Close: Jenny Riley, Paul Waters and Catherine Riley

To Gypsy Lane: Emil and Emma Petrie and their son Redmond and daughter Maia

To Elmore's Meadow: Katharine Bradbury and Saddeck Sheikhossein and daughter Eleanor, who has just started at Bleasby School

We hope that you will all be very happy in the parish of Bleasby and that we will meet you all at some of the future events.

New Arrival!



We are pleased to announce the arrival of Lucy Amelia Betts, a daughter for Lisa and Duncan and sister for William.

Bleasby Parish Council News

Like most villagers, most Parish Councillors take their holidays sometime during the traditional summer recess and as a result there was no Parish Council meeting in August but this did not prevent the continuation of normal PC business.

New councillors attended the Nottinghamshire Association of Local Councils (NALC) training specifically designed for them and the learning there assisted in the deliberations of the Internal Review working party which has been going through the organisation and management of the PC with a “fine tooth comb”. This review will form the basis for the Parish Council Action Plan which will itself provide the council with clear direction and purpose.

The forthcoming (and confusingly called) Parish Plan, however, is very much one that invites total village participation with the purpose of recognising all that is valued in Bleasby Parish, all that might be improved in the village and the ways by which those things could be achieved. Early strategies for the introduction of this important village-wide consultation and engagement have been crystallised by the Parish Plan working party and you will find further details in subsequent copies of Bleasby News.

The management of the village website, set up by the pre-election council through the initiative and management of James Bright, our previous Parish Council Chair, has now been transferred from his capable, but now retiring hands. The website provision is to be progressively developed and a fully functioning service re-established as soon as possible. Further discussions and preparations have been going ahead with regard to the installation of the defibrillator and the adoption of Ferry End, and both will inevitably figure within the Parish Plan.

Just before the holidays began the great amenity value (and asset as a village focal point) of the Glebe Field was amply demonstrated by Bleasby School Friends Association (BSFA) Summer Fair and the Bleasby Bikers’ Welcome Home. From these events several thousands of pounds were raised for charity and the school, whilst those councillors assisting with the event gained much from experiencing first-hand the preparations, needs, complications and demands of such events. This will prove invaluable to the Council’s further management of the site and programme of events.

The Council would be delighted to hear of villagers’ suggestions for the further improvement to our whole parish and its community cohesion, so please, please step forward and become involved in the many parish organisations and opportunities and especially consider playing your role in ensuring that the Parish Plan is truly representative of the views and aspirations of all sections of the community.

Peter Cast on behalf of the Parish Council

Bleasby Women's Institute

We have traditionally (or at least as long back as most members can remember) had a summer barbecue down at Gibsmere Farm, in one of our President's fields. This year was a little different, we were very pleased to welcome Tom and Simon's Kitchen, bringing us gratefully received and warming fish and chips on what turned out to be a very cool July evening. Despite being somewhat chilled and damp, we had a great time.

Just to update you on how our **Intrepid Six** fared on their **Routes to Roots** expedition to mark and celebrate the founding of the **WI** in Britain in September 1915. On Wednesday 9th September there was a small party of our members to wave off the six and they had all left Bleasby by 8.00 am and the last pair arrived in Bangor by 7.30 pm on the same day. The whole team enjoyed the experience and have lots of tales to tell.

They travelled without the use of money or their own transport from Bleasby to Llanfairpwll on the island of Anglesey, the place which has the proud distinction to have held the first ever meeting of the Women's Institute in 1915 - the movement, founded in Canada, then spread through the rest of the British Isles. Six members planned their routes and travelled in various ways – Rachael and June were transported by members of each County Federation they travelled through: Monica and Hazel used their bus passes to get there and were extremely grateful to the Welsh bus provider Arriva for allowing them to use their English passes in Wales, and also thankful to Virgin Trains for their free First Class rail tickets for the final leg of their journey: Melanie and Nicola hitched all the way and part of their journey was in a hearse!

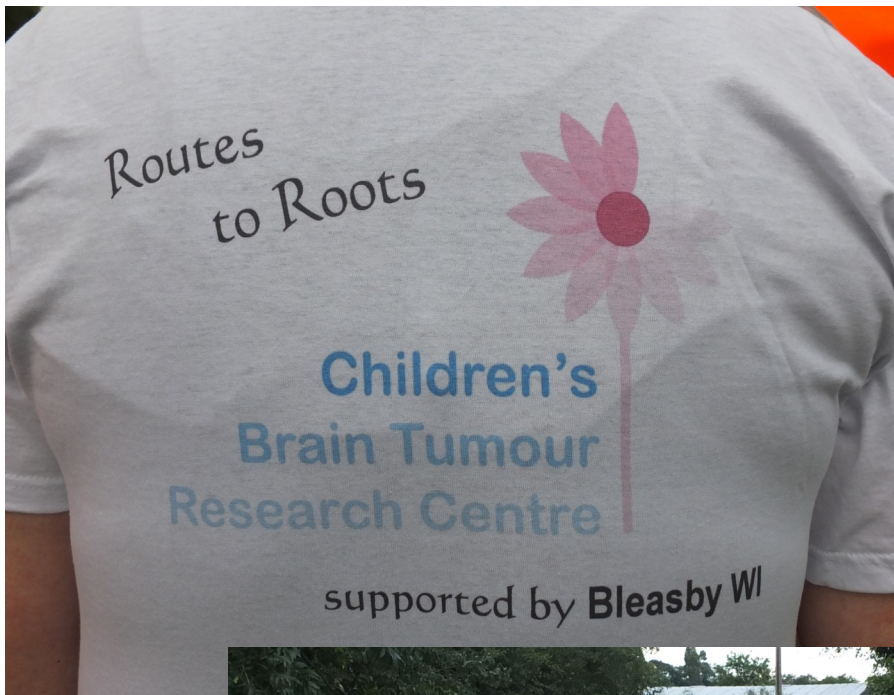
The whole team stayed for a few nights on Anglesey with the compliments of a member's family and ended their challenge by walking across the Menai Bridge to have a celebratory lunch at the Llanfairpwll WI hall where it all began in 1915.

As well as engaging in this further dare-devil exploit (some of us remember the outrageous BWI camp-out a couple of years ago) all this will also hopefully raise funds to support the *University of Nottingham's Children's Brain Tumour Research Unit*. Should anyone wish to donate you can do so through www.virginmoneygiving.com . Just enter Bleasby WI into the site and make your donation – every pound will help researchers to understand this cruel and less understood childhood disease and to find better ways to treat it. Giving remains open until the end of October.

The talk at the September meeting of Bleasby WI had the intriguing title of "John Bishop changed my life", and was a most interesting account by Wayne Brewin of his cycling experiences. In October twenty one members will be off to Denman for an overnight stay at our wonderful college set in the Oxfordshire countryside. Also in October it is our Birthday Party and we will be 93! We were one of the earliest WIs to be formed and we are still going strong – come and join us!

Barbara Cast

(with Routes for Roots update from Christine Sharpe who was one of the back-up team
with Wendy and Lorraine)



BLEASBY WI

ROUTES TO ROOTS EXPEDITION 2015



Harvest at St Mary's

The annual celebration of the harvest will take place at our church of St Mary's on Sunday 11th October at 11am.

As part of the traditional celebrations gifts are always welcome. However, these days it isn't the produce of the local gardens and fields that are found most useful but other more lasting foodstuffs which can be passed on to food distribution centres in the area. So, if you are coming to the service, and we hope that many of you will, please bring tins or other such non-perishable items which can be provided to people in need.

There will also be a bring and share lunch after the service – at which food brought by attenders will be shared amongst all those present.

Our new vicar, Revd Philip White, will be taking our harvest service so it will be a good opportunity to meet him.

Colin at the Waggon

Colin Hussey has been at the Waggon & Horses for more than six years, arriving in April 2009 to take over the pub, bought and refurbished by Trevor Vickers. Previously, Colin had managed a private dining room and bar at a golf club in Sheffield. Running a pub was a new challenge for him and he soon got to grips with it.

Thanks to Trevor and Colin the Waggon remains at the centre of village life, especially at fetes, festivals and village celebrations. Colin has welcomed groups to meet in the pub, opening especially in the afternoon for the Book Group and offering the pub as a display place for the art group. Darts teams and, more recently, a skittles team are based there and, being so close to the church, it is a valued venue for wedding, christening and funeral receptions. The Hunt and Morris Men also take advantage of the Waggon's picturesque position in the village and are welcomed.

There have been some notable successes. The pub has been in the CAMRA Good Beer Guide for 6 years and was finalist in the Nottinghamshire pub of the year on 2 occasions. The Sunday Night Quiz continues to attract good numbers. There have also been disappointments, particularly that the meals side of the business hasn't been maintained due to a scarcity of efficient and willing chefs. With drinks sales down nationally by 7% this is the side of the business that Trevor wants to develop, while keeping the pub as a much-loved "local". Colin has valued Trevor as a friend as well as owner and wishes him every success, hoping the pub will grow and thrive.

Colin retires at the end of October and is looking forward to more time to himself. He is returning to his family and roots in Sheffield and is keeping an open mind on what comes next — something more part-time he hopes. After a suitable break, giving his successor time to settle in, he has promised to visit now and again. We wish both him and Jez well in whatever they do. Colin will be missed by regulars and 'irregulars' alike for his welcoming, easy-going nature, and his interest in village life and the world beyond. We will also miss Jez's cheerful pint pulling!



COLIN PULLING A PINT BEHIND THE BAR

Church News

Baptism

On Sunday August 9th at our Holy Communion Service, Emily Jadhav, Ruth and Sachin's daughter, was baptised. The usual congregation was swelled by summer visitors and the Taylor and Jadhav extended families, contributing to a joyous occasion, and Emily responded to her baptism with a rapturous smile. We welcome her into the church family.

Licensing Service

The Revd. Philip White will be licensed as Priest in Charge of the West Trent Group of Churches at St. Michael and All Angels, Hoveringham, on Wednesday 7th October at 7.30 pm. His first service at Bleasby will be our annual Harvest Thanksgiving Holy Communion, followed by a Bring- and-Share Lunch. This will be a good opportunity to meet Revd. Philip and to welcome him to Bleasby. All are warmly invited to this service and/or the lunch.

October Services

It is expected that the usual pattern will hold until the end of October, but all services are to be confirmed. Please check notice boards towards the end of September.

Recent deaths

We offer our sympathy to the family of Bill Wilson of Sycamore Lane; to the family of John Kirton of Gypsy Lane; and to the family of Gordon and Pat Ley of Lowdham (formerly of Gypsy Lane), who died within days of each other.

In memory

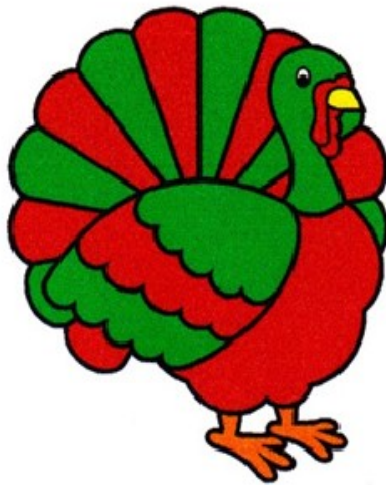
Sidney Crowder of Orchard Close, born 1925, who died on 29th September 2013; resident of Bleasby for 65 years; sadly missed by all his family and friends.



WOODEN DRAGONFLY IN THE GLEBE FIELD



JACKSONS FARM REARED CHRISTMAS TURKEYS



PLACE YOUR ORDERS NOW!

OUR PRICE £3.30 PER LB

PAY US A VISIT AT:

**HOLME FARM
GONALSTON
NG14 7JA**

OR CALL US ON : 0115 9663970

Bleasby Diary of Events

Date	Time	Event	Location
Saturday 3 rd October	9.30am	Jubilee Ponds Working Party	Jubilee Ponds
Sunday 4 th October	10.30am	Service of morning prayer	St Mary's Bleasby
Wednesday 7 th October	7.30pm	The installation of Revd Philip White	St Michael's Hoveringham
Sunday 11 th October	11am	Harvest Festival service followed by a bring and share lunch	St Mary's Bleasby
Sunday 11 th October	6pm	The Trent Choir sings evensong at Tickhill Parish Church	Tickhill
Monday 12 th October	7.30pm	Meeting of Bleasby Parish Council	Village Hall
Tuesday 13 th October	9.30am	Jubilee Ponds Working Party	Jubilee Ponds
Friday 16 th October	10am	Lifeboat Coffee Morning	Village Hall
Sunday 18 th October	9.30am	Jubilee Ponds Working Party	Jubilee Ponds
Sunday 18 th October	10.30am	Benefice service of Holy Communion	St Peter's Thurgarton
Tuesday 20 th October	Evening	Bleasby WI's 93 rd birthday celebration	Ramsdale
26 th – 30 th October		Half-term holiday for Bleasby School	
Tuesday 27 th October	8pm	Meeting of Bleasby Local History Society with Bob Massey on Music Hall on Film	Village Hall
Saturday 7 th November	9.30am	Jubilee Ponds Working Party	Jubilee Ponds
Sunday 8 th November		Remembrance Sunday	

Date	Time	Event	Location
Monday 9 th November	7.30pm	Meeting of Bleasby Parish Council	Village Hall
Tuesday 10 th November	9.30am	Jubilee Ponds Working Party	Jubilee Ponds
Sunday 15 th November	9.30am	Jubilee Ponds Working Party	Jubilee Ponds
Monday 16 th November		Deadline for December's Bleasby News	
Tuesday 17 th November	7.30pm	Meeting of Bleasby WI with Graham Keal on Oprah Winfrey touched my elbow	Village Hall
Saturday 21 st November	7.30pm	Southwell Choral Society concert – Chilcott Requiem & Elgar Spirit of England	Southwell Minster
Tuesday 24 th November	8pm	Meeting of Bleasby Local History Society with Peter Hannard on Robert Blincoe; Nottinghamshire's Oliver Twist	Village Hall
Saturday 5 th December	2pm-6pm	BSFA Christmas Fair	Bleasby School
Sunday 13 th December	4pm	The Trent Choir's Annual Carol Concert	All Saints Rolleston

Jubilee Ponds Working Parties are regularly held on the first Saturday, the second Tuesday and the third Sunday of each month—dates included in the diary. You will be very welcome – there's always plenty to do—and see!

Thinking of Visiting Shropshire?

Richard & Wendy look forward to
welcoming you to their B&B.

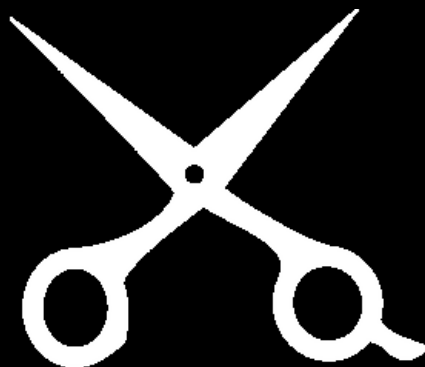
Woodville,
Clun Road,
Craven Arms,
Shropshire SY7 9AA.

Situated in unspoilt countryside - excellent for
walking and close to the ancient market town of
Ludlow with many award winning restaurants.

Contact: 01588672521 or 0780250557.

glazebrook1@tiscali.co.uk

Woodville-Bed-and-Breakfast.com



SARAH ROSCOE
MOBILE HAIRDRESSING

I COVER THE SOUTHWELL AND NEWARK AREA INCLUDING
SURROUNDING VILLAGES

HOME PHONE: 01636 831 089
MOBILE PHONE: 07800 516 553
EMAIL: SL.ROSCOE@TISCALI.CO.UK

WWW.SARAHROSCOE.COM

Congratulations on Those Leaving Their School Careers

Congratulations to:-

Ross Adshead of Orchard Close who is going to Abertay University, Dundee, to study computer games development

Emily Dove to study art and design at the University of Leeds

Will Andersen going to Northumbria University to study architectural technology

Abbie Lewis taking a gap year to travel and then nursing studies

Mary Sutherland also taking a gap year travelling and then studying zoology at Derby

Lizzie Fussey will be travelling in India

Cameron Coghill to study sports science at Portsmouth (and windsurfing!)

We would love to hear more from all of you on how you are getting on!

Trent Churches Choir

Rehearsals for our Choral Evensong in the beautiful St Mary's Church at Tickhill on 11th November at 6pm are now underway.

Our immediate programme also includes music for the new Vicar's Induction Service at Hoveringham on 7th October.

Thereafter we shall be working on a number of new (and some old!) carols for the annual CAROL CONCERT on Sunday 13th December at 4pm in Holy Trinity Church, Rolleston.

Admission is free. There will be a collection for the Lincs and Notts Air Ambulance. Tea and cake will be served after the concert.

The event is a perfect start to the Christmas season so do come along. We can guarantee that it will be well worthwhile – whatever the weather, you will receive a warm welcome.

John King – 831035

As an addendum to John's message, can we add that new singers will always be very welcome to join us – rehearsals are at 7.30pm in Bleasby Village Hall.

Trent Group Churches - Services and Events in October

Parish Church at:-	Sunday 4th	Sunday 7th	Sunday 11th	Sunday 18th	Sunday 25th
Bleasby	10.30am Morning prayer		11am Harvest Service		
Halloughton	6pm Harvest Service				9am Holy Communion
Hoveringham	6pm Evening prayer	7.30pm Licensing of Rev Philip White		4pm Harvest Service	10.30am all age service
Morton	9am Holy Communion		10.30am Harvest Service		10.30am Holy Communion
Rolleston	10.30 Morning prayer		9am Holy Communion		10.30am all age service
Thurgarton	10.30 all age service		10.30am Morning prayer	10.30am Whole Benefice Holy Communion	10.30am service at the Methodist Church
Upton	10.30 Holy Communion		10.30am Morning prayer		10.30am Morning prayer

Southwell Music Festival

The second Southwell Music Festival was a great success, matching the first one in the quality and variety of the music performed, the scarcity of tickets if you weren't quick enough to snap them up and the enthusiasm of everyone involved.

The festival has been highly praised all round with a superb tribute by Hugh Canning of the Times in which he praises the whole festival, picking out the Schubertiade and Haydn's Seven Last Words as particular highlights and the performance of the Mendelssohn's Elijah (which won a unanimous standing ovation) saying "this was a clear indication that Southwell can already equal, even surpass, more established festivals".

Bleasby was involved in that several of the musicians stayed over the bank holiday weekend as guests of local people and lots of us went to as many concerts and events as we could.

Next year's festival is over the August Bank Holiday once again and something amazing to look forward to.

Barbara Cast

Bleasby Jubilee Ponds

"A wise old owl sat on an oak,
The more he saw the less he spoke,
The less he spoke the more he heard,
Why aren't we like that wise old bird?"

The Jubilee Ponds provide all parishioners with a beautiful and calming scene full of changing vistas and pleasing experiences. It is a place where we can all seek peace, solace, inspiration and the joy of life. To see the inverted reflections of white puffs of cloud in a deep blue sky and the mirrored images of wind-graced reeds brings a calmness and an opportunity for us all to reflect, like the owl, on all that is good and worthwhile in life.

Peter Cast

"FINE CELL WORK" - AND DODDINGTON HALL

On Wednesday 5th August six of us from the Wednesday Sewing and Scrabble group had a day out at Doddington Hall, near Lincoln.

The main reason for going was to see an exhibition of wonderful quilts and needlework entitled "Voices from the Inside". The organisation behind this exhibition is called Fine Cell Work which was founded in 1997, and trains men and women in prison to do high-quality, paid needlework in the long hours they spend in their cells. Their aim is to enable prisoners to acquire new skills, to earn and save some money and give them a sense of pride which it is hoped will stop them offending when released.

I quote from the information we were given: "The sale of their work gives prisoners a sense of connection with the world outside prison. Currently working in 30 British prisons with up to 500 in each calendar year, and around 270 at any one time, Fine Cell Work specifically addresses key issues affecting prisoners' offending behaviour: development of work skills, relationships and mental resilience. Taught by experienced volunteers, prisoners in their cell organise their own work and decide how to spend their earnings which establishes a work ethic and creates the opportunity for them to send money out to help family members or to save for their release".

The quilts, which were displayed throughout the house, were a mixture of colourful, thoughtful, very cleverly designed and beautifully sewn pieces of work. One piece showed an accurately sized cell, seen from above, with bed, basin, loo and desk, with personal items, all embroidered by their owner. It was very impressive.

Unfortunately the exhibition finishes at the end of August, but if there is ever a chance to see some of this magnificent work elsewhere, do take the opportunity to do so. You can find out more at their website www.finecellwork.co.uk

Alison Salter

Bleasby Playgroup Competition Winner

As a new playgroup, we really wanted to come up with a logo and name for our group. We decided that the best people to ask for a spot of creative inspiration would be the pupils at Bleasby CofE Primary School.

With the help of Mrs Town and her staff, we launched a competition. The entries that we received were superb, far more exciting than anything we'd hoped for. The only problem was how to choose a winner! We finally chose Elizabeth Woods of Class 4 with her wonderful winning design, "Little Blease Bees".

Congratulations and thanks to Elizabeth and to all the children who put so much effort into their beautiful designs.

Victoria Walster



*Bleasby News is published by Bleasby Parish Council and distributed by local volunteers.
Printed by Toot Hill School Printers*

Whilst every effort is made to ensure accuracy, the editorial team cannot accept responsibility for errors or omissions in articles appearing in Bleasby News. The views expressed in Bleasby News are not necessarily those of the Editors nor of Bleasby Parish Council.

The Parish Council also wishes to make clear that the content of the village website does not necessarily reflect its views.

Bleasby School Friends Association News



Summer Fair

The Bleasby Summer Fair was a huge success and the BSFA would like to thank everyone who came down on the day to support the event. The event raised over £4,000 profit which is a fantastic achievement. We would like to thank our amazing sponsors, The Bleasby Bikers, advertisers, exhibitors, prize givers, Famestage Midlands, Sarah Summers, attendees, helpers, parents, children, Bleasby School, friends and family, the Parish Council and the BSFA Committee. A truly amazing achievement. Thank you all.

AGM

Our AGM and Macmillan coffee morning was held at the end of September when lots of people turned out to support us, while raising money for Macmillan Cancer Support. We would like to thank all of our members who stood down at the AGM for their support and commitment to The BSFA. They have been instrumental in fundraising large amounts of money and making a real difference to the children of Bleasby School. Many have chosen to remain as friends to the BSFA and will continue to support us in our fundraising goals. We would also like to warmly welcome the new BSFA committee members who have joined our team. We are very much looking forward to working together in helping Bleasby school move forward.

EasyFundraising

At the end of 2014 we won first prize in the easyfundraising competition, as the school that had raised the most donations, winning a whopping £1000 for Bleasby School, and we have grown our members to 120. Our Easyfundraising total now stands at an amazing £8,228. Every time you shop on-line you can raise money for BSFA, at no extra cost to you. Simply register at

<http://www.easyfundraising.org.uk/bleasbyschoolfa> Please feel free to contact Janene Scurfield (Chair) on Janene.Scurfield@erac.com for further information. Please support our fundraisers whenever you can. We could not raise any money without the generous support of the school and local community.

Diary Dates

The School Monster Mash Disco is being held at Thurgarton Village hall on Friday 16th October. We will be running competitions for the best fancy dress costume as well as the most creatively carved pumpkin.

The Christmas Fair will take Place on Saturday 5th December between 2pm and 6pm. We are holding the Fair at Bleasby School as the weather can be quite unpredictable at this time of year. Please come along and join Santa in a mulled wine and mince pie.

We are looking forward to holding a quiz night on Friday 29th January 2016. Tickets will cost £10 per person and include hot food. Please save these dates and look out for further information regarding both the Christmas Fair and the Quiz night.

Thank you for continuing to support Bleasby School Friends Association

If you would like to contact the BSFA please email Sam Bennington

Samb1000@hotmail.com

Janene Scurfield (Chair), Sam Bennington (Secretary), Nic Bennett (Treasurer)

HAPPY PAWS



Dog walking service

Home alone? Not anymore - I'll walk your dog(s), big or small

Call Kristin
07825663397

jean.birkett5@btinternet.com

Fees tailored to meet your requirements

Bea Cleaning Services

We Leave the Competition In the Dust

- Regular Domestic Cleaning
- 1-Off Cleaning
- Move In/Out Cleaning
- Office Cleaning

Contact Bea

07826480783

0115 8402018

beacleaningservice@gmail.com

www.beacleaning.vpweb.co.uk

We are fully insured and
vetted

Littering – making it socially unacceptable

A recent survey found out that a majority of people consider littering to be as socially unacceptable as many other anti-social behaviours (drink-driving was cited as an example of a comparable anti-social activity!). And yet it is assessed that more people are dropping litter now than ever before. This is disastrous because – local authorities are being deprived of funds to carry out their core functions, so litter removal has to take a back seat; fast-food, tobacco and drinks companies' packaging is often not biodegradable and their customers are, of course, the biggest culprits; in addition the government grant to the Keep Britain Tidy campaign group was slashed from £5m to nil in 2010 and there is no national litter strategy.

A number of businesses are backing a clean-up plan and urging the government to “provide or stimulate funding”. Ironically McDonalds is one of these businesses - its packaging frequently appears on Goverton Hill.

Locally we have an additional problem in that we have lost our local recycling centre, causing some of those who don't want to travel several miles to Bilsthorpe or Calverton to find some quiet land to dump their rubbish on. The closure of “Fiskerton Tip” (as it was known) by the County Council has the knock-on effect of more expenditure for the District Council whose responsibility it is to remove and dispose of fly-tipping.

The cost of keeping streets clean is almost £1billion a year – much of this goes to removing litter. Making it socially unacceptable to drop litter and ensuring businesses take responsibility for the packaging litter they generate must be two of the ways forward.

Tossing a sandwich packet out of the car window costs us! Take it home!

KBT

ADVERTISING IN BLEASBY NEWS

Want to advertise your event or service and support your village at the same time?

What about an advert in Bleasby News – now more informative than ever and delivered to every household in Bleasby, Goverton and Gibsmere six times a year

Contact Rachael Andrew on 830296 or Barbara Cast on 830284

	Full page	Half page
1 issue	£20	£12
6 issues	£80	£60

If you have contacted or used one of the Advertisers in Bleasby News, please let them know where you heard about them!

Your local Hearing Care Specialists

0115 961 8351

FREE HEARING CHECKS

EAR WAX REMOVAL

TINNITUS SUPPORT

HOME VISITS

Whether you are looking into hearing issues for the first time or are struggling with your existing hearing aids then **Correct Hearing can help.**

We are a family run and owned independent practice, with over 30 years experience.

Call today for an informal chat or to request your FREE Hearing Guide 0800 368 47 47



Sarah Vokes



Damian Eyre

Web: www.correcthearing.co.uk

Email: info@correcthearing.co.uk

242 Oakdale Road, Carlton, Notts, NG4 1AD

MISSING CAT

Missing from Goverton (near Bleasby).

Large female ginger cat.

Very friendly. 8 years old.

Last seen Friday 10th July.

Much loved family pet.



**Please contact Nicola on 07837 810487
if you see her. Thank you**



THH.FITNESS



MOBILE PERSONAL TRAINER

THOMAS HUTCHINSON

thhfitness@gmail.com | 07581 273 035



@THHfitness



@thh.fitness



THH.Fitness

Too nervous or don't have the time to get to the gym? Then why not hire a personal trainer to come to the comfort of your own home. Bespoke package to tailor every individual:

-Weight loss/Toning

-Muscle building

-Strength

-Power

-Endurance

-Nutrition advice



NJN JOINERY

Phone: Nigel Newcombe
on
01636 525506
or
Mobile: 07837 235427

**ALL TYPES OF JOINERY
AND
MAINTENANCE WORK
UNDERTAKEN**





Flood Defence Solutions in Nottinghamshire

Flood Defence Solutions Ltd can help protect your home, or business, from flooding!

Flood Defence Solutions Ltd can help protect your home and business from flooding. Offering a wide range of flood defence products from Water Wall Flood Barriers to Anti-Flood AirBricks to help reduce the risk of flooding to your home and business.

Systems, solutions and products to help prevent flooding include:

- Flood Barriers, Water Barriers, Flood Gates
- Anti-Flood AirBricks
- Water Repellent Concentrate
- Sewage Protection
- Back Water Valves
- U Bend Toilet Bungs
- Power Drain Cleaning Services

**NEED HELP OR ADVICE? CALL US ON
0115 966 3185 OR 07506 729 772**

D. J. Hall Funeral Directors

Southwell & District Funeral Service

Your local independent funeral directors

offering a personal and caring service

Verne House

62, King Street

Southwell

TEL: 01636 812481

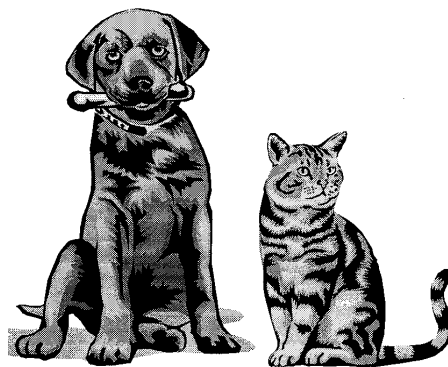
EMAIL: sdehall2000@btconnect.com

WEB: www.djhallfuneraldirectors.co.uk

Going away?

Why not leave your pets with us?

Valley Boarding Kennels & Cattery



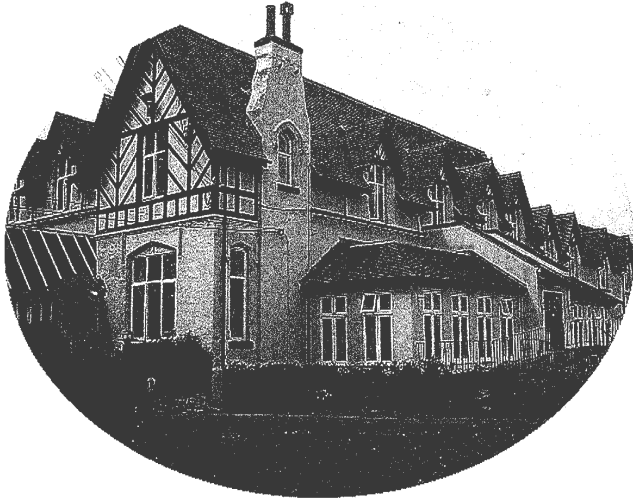
Situated between Bleasby and Fiskerton in the heart of the countryside

**** Kennels and catteries with outside individual runs ****

Please visit to see our facilities

Gypsy Lane, Fiskerton | Telephone: 01636 830268

www.valley.talktalk.net



Hazelford

The Provider of Quality Care

Our home is situated in a beautiful location with open views of the river and surrounding countryside. With lovely gardens and an abundance of wildlife, this makes Hazelford a delightful location for our residents, to some of whom we offer a short break; for others we become their home.

We pride ourselves in offering a home from home environment with an excellent ethos whereby our residents are involved in the decisions we take. We focus on our residents' aspirations, ideas, views and suggestions.

We have a person centred approach to the care of the residents: this approach is vital to ensure the best possible outcome and wellbeing.

Dementia care is a specialist area: we ensure with sensitivity that the resident is supported continually with person centred care planning, reinforcing daily the aspects of their lives they enjoy to ensure wellbeing and pleasures on a daily basis as, sadly, the previous day may be forgotten.

Our aim is to offer stimulating activities, with one to one time for those who may have dementia: we specialise in this area and our approaches create a relaxed harmonious environment for all.

Our bedrooms are large with views over the countryside and offer a choice of colour and furnishings, personalising them to suit our residents' preferences and choice.

Please feel able to visit our home at any time – a warm welcome awaits you. We encourage families to also have an input into the plans the home may make. We hold family and friends of the home evenings.

With spring and summer comes along a plan of social events: for the summer an annual garden party, summer fair and schedule of outings to various venues.

HAZELFORD

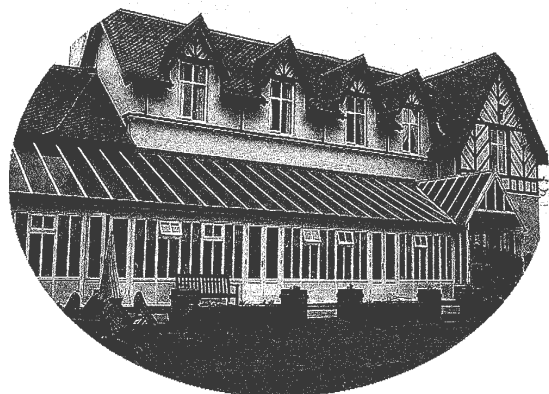
Boat Lane

Bleasby

Nottingham

NG14 7FT

Tel: 01636 830207



ROB BROWN LTD PLUMBING AND HEATING

MOBILE 07973890499

NOW BASED IN BILSTHORPE

email robinb9@gmail.com
more than 20 years experience

INSTALLATION SERVICE & REPAIRS
OF DOMESTIC GAS APPLIANCES &
HEATING & HOT WATER SYSTEMS

ALL PLUMBING WORK UNDERTAKEN
SMALL BUILDING WORKS
AND PROPERTY REPAIRS
ELECTRICAL REPAIRS

DO YOU RENT PROPERTY?
WE DO LANDLORD,S GAS CERTIFICATES
MAINS PRESSURE HOT WATER
Fully insured /no call out fee



Fading Memory?

Discover your local all-in-one photographic service and have your precious memories restored to their former glory

Image restoration - have creases, tears, scratches removed

Retouching - have your photograph enhanced by the removal of red eye, blemishes and marks, teeth whitened, eye colour changed and enhanced to showcase the real you

Montages - create a unique picture made from a selection of images of your children, grandchildren or a special event

Preserve those holidays movies and have your VHS, Hi8, Digital8, and miniDV tapes digitised and put on to DVD to watch again and again

Make some space under the bed and have your slides and negatives digitally copied to DVD to watch on your television

Digital photobooks created and printed,

Perfect for Christmas, birthdays, anniversaries or as a unique and personal gift

For a no obligation home appointment to discuss your requirements call

Andy Ball

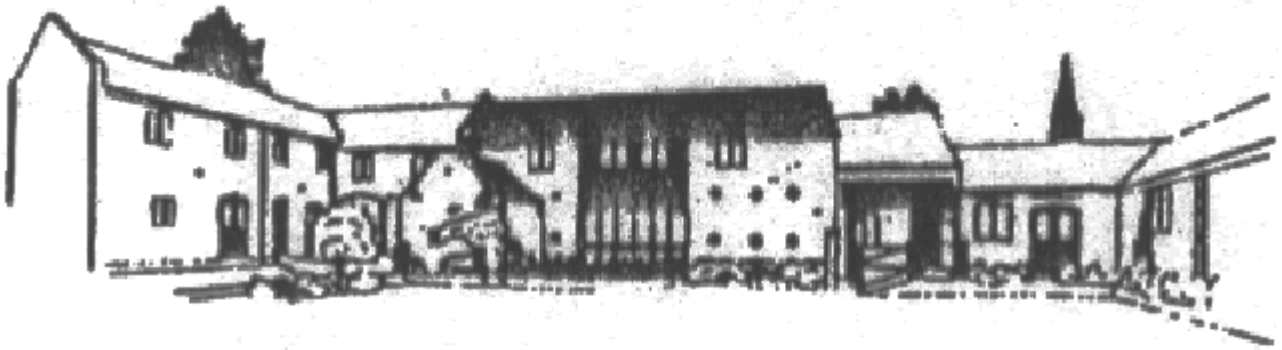
www.FriesianFotographic.com

07931 535 131

info.friesianfoto@gmail.com

"Horstead", Station Road, Bleasby, Notts, NG14 7GH





THE BYARS

A small, family owned and managed, independent Care Home situated amidst the rural landscape of the Trent Valley

The highest quality care in the highest quality accommodation

Our home offers long and short term care for the elderly

Viewing welcomed. Further details on request

THE BYARS
· CAYTHORPE · NR. LOWDHAM ·
NOTTINGHAMSHIRE · NG14 7EB

Tel: 0115 9663981
REGISTERED NURSING HOME

NEW ZEALAND

- TAILOR-MADE ITINERARIES
- SMALL GROUPS JOURNEYS



01636 816 262 | www.hbtravel.co.uk

1 KING STREET, SOUTHWELL NG25 0EH



The Tree Fellers of Bleasby



Tree Felling
Tree Pruning
Hedge Cutting
Tree Dismantling
Garden Services

We specialise in the safe and affordable removal and pruning of trees and shrubs.

Call for a free quotation from a qualified arborist.

Free Quotations contact Paul Wood

Phone: 07956 905287 or 01773 535 886

Email: info@thetreefellers.co.uk



ACADEME ROOFING

Quality Roofing Services



NOTTINGHAM'S NUMBER 1 ROOFING PROFESSIONALS

CALL OUR OFFICE ON:
0115 950 6444

“Our reputation is built
on **QUALITY**, first class
customer service, reliability
and professionalism”



Business Directory
Registered Member



LOCAL AUTHORITY APPROVED
ROOFING CONTRACTORS

**All Areas of Nottinghamshire covered
CALL TODAY!**

- Slate & Tile Roofs
- Single Ply Membranes
- Flat Roofs
- Guttering, Soffits and Fascias
- Chimneys Re-Pointed
- Industrial Roofs/Domestic
- Specialists in all lead work
- Re-roofs & New Roofs

OVER 30 YEARS EXPERIENCE • FREE ESTIMATES

www.academerofing.co.uk • office@academerofing.co.uk

23 • Little Tennis Street • Colwick • Nottingham NG2 4EL

HANDYMAN CHRIS CAN DO IT OR FIX IT!!!



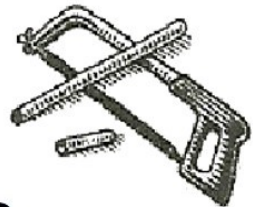
**KITCHEN & BATHROOM FITTING
LOFT CONVERSIONS**

**WINDOW & DOOR FITTING
LAMINATE & WOOD FLOORING**



WALL & FLOOR TILING

PLUMBING



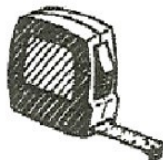
ELECTRICAL

PAINTING & DECORATING

PROPERTY MAINTENANCE

FLAT PACK ASSEMBLY & FITTING

COMPETITIVE PRICES
FAST & PROFESSIONAL SERVICE



Telephone: 07877 240 760
Email: handychris.services@gmail.com

The Waggon & Horses

Gypsy Lane, Bleasby



Real ale! Real food!

Your local pub!

Colin on 830283