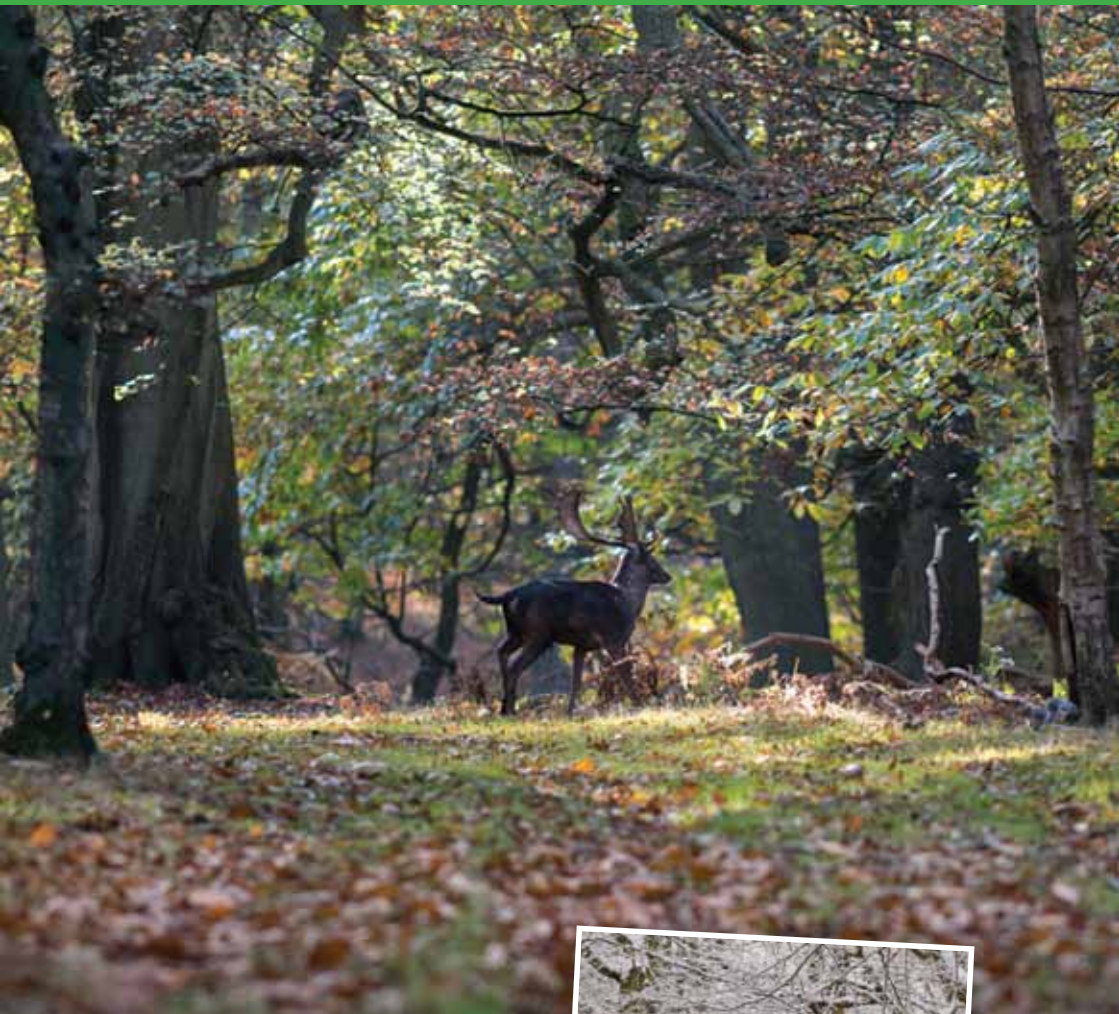




Ivinghoe Beacon Magazine

Issue 99

70 pence where sold



Inside this Issue:

- NDP News Update
- Christmas Memories
- Rikki>About in Ivinghoe Aston



The Quarterly Magazine
of Ivinghoe Parish Council

The Beacon Team...

The Beacon Magazine would not reach your door without the kind help of the volunteer band of distributors.

Many thanks to them all; Andy Beezer, Les Hyde, Pat Roach, Geoff Travis and Rob and Anne Cattle – it couldn't be done without you!

If you have any skills that will help us to keep the magazine going or you would like to submit an article, please let us know as we are always looking for new and varied talents!



Editor: Christabel Boersma

Tel: 01296 661 532

Email: christabelboersma@hotmail.com

Advertising Manager: Ali Wade

Tel: 01296 662 446

Email: ali_wade1@sky.com

Design & Artwork: Laila Palfrey

Tel: 07979 945231

Email: laila@breezdesign.co.uk

BEACON MAGAZINE ADVERTISING RATES:

1/4 page	£38 per year
1/3 page	£45 per year
1/2 page	£75 per year
Full page	£110 per year

CONTENTS

Welcome from the Chair	3
Neighbourhood News	4-19
Ecumenical Enlightenment	28
Sporting Scoop	32
Cultivation Clippings	36
School Stuff	40-43
Beyond the Boundary	48-50
Councillor Communication	52-59

BEACON COPY AND ADVERT DEADLINES

We aim to get the magazine distributed around the beginning of every February, May, August and November. To ensure your article or feature makes the edition you would like please see the submission deadlines below:



February 2017 Edition – 4 January 2017
May 2017 Edition – 4 April 2017
July 2017 Edition – 4 June 2017
November 2017 – 4 October 2017

NB: Rates are for 4 editions.

Artwork must be supplied as a jpeg or a pdf file.

Welcome from the Chair



Karen Groom,
Chair, Ivinghoe
Parish Council

Welcome to the final edition of the year. I am pleased to say the planters located by The Lawn are being planted and we can look forward to the spring flowers next year. Thank you to Wyevalle Garden Centre in Tring who very kindly donated the plants in one of the planters.

Footpaths

The Parish Council have received a number of complaints about overgrown footpaths, which have all been reported to Bucks who are attending to these.

Dog Mess

Unfortunately, dog mess has been an increasing problem over the last few weeks especially near the pre-school entrance and High Street. Please be vigilant and report any irresponsible dog owners to the dog warden at AVDC. Signs will be put up in the playgrounds regarding dogs.

Playgrounds

The playgrounds will be getting new signage and we will be aiming to purchase new playground equipment in both Ivinghoe and Ivinghoe Aston. The WI have offered to purchase a new picnic bench for Ivinghoe which we will be able to enjoy soon.

Website

Please visit our website which has been relaunched www.ivinghoeipc.org.uk

The Parish Council are also launching a new photography competition, open to all, young and old, in conjunction with the new website. We are looking for pictures that have been taken within Ivinghoe Parish, if you're unsure where our boundaries are see our website. The photograph can be of built and/or natural surroundings (but not include any people) – all images will be judged in May 2017. There will be categories for youngsters up to school year 6, school years 7 – 11, age 17 to 25 and finally age 26+. We live in a beautiful place, together with Ivinghoe Parish Council's new Website and your pictures we can share this beauty with the world. There will be prizes for each category winner and runner up. Full terms and conditions will be in the next issue of The Beacon and can be found on our website now. So please get clicking!

Traffic

Traffic is still an issue and anyone wishing to join in with traffic calming training should contact the Clerk.

Parking

We are aware of some of the irresponsible parking in the village. Where parking is dangerous please report this to the police by calling **101**.

I would like to take the opportunity to wish you all a very Merry Christmas and a Happy New Year.

Karen Groom, Chair
Ivinghoe Parish Council

Neighbourhood Development Plan News



In the last Ivinghoe Beacon Magazine, we explained that following the Questionnaire, the Ivinghoe Parish Neighbourhood Development Plan Steering Group were writing the draft plan with the intention of sharing the plan with the Parish Council by the end of the summer and then the rest of the Parish in the autumn. However, in parallel AVDC have been developing their Local Plan and at the end of July, AVDC contacted us about identifying sites for 51 houses. These houses amount to Ivinghoe's allocation in the Local Plan less those that have been granted planning permission since 2013. It had not been our intention to allocate sites in the Neighbourhood Development Plan, rather we were going to produce a policy based Plan; however, the choice we faced was to either allocate sites, which we had to do by 30th September, or hand over responsibility for this exercise to AVDC.

We felt that it was important to retain control of the allocation of sites and so during August and September we went through a process to identify the most suitable land. Having identified potential sites on a map, we then visited landowners to assess suitability and the willingness of landowners to put their land forward. This left us with three realistic sites. In the responses to the Questionnaire, the views of residents were quite clear in that the preference was for any development to take place on brownfield land and within the current

confines of the village as far as possible. The selected sites fitted these criteria and we now await a response from AVDC as to whether they believe that the sites are suitable.

We have not had to put forward sites for Ivinghoe Aston but while we did not do so, we did go through the same process of identifying potential sites and speaking to landowners. We remain open minded as to whether to identify additional sites in Ivinghoe and sites in Ivinghoe Aston within the Neighbourhood Development Plan as this is not a decision that we need to make at this time.

This change of approach, which has been forced upon us, means that we are no longer planning to go to referendum in the spring of 2017. There is extra work that will need to be undertaken surrounding the allocation of sites, such as environmental impact assessments, which will need additional time plus we also need to await the response from AVDC on our proposed sites. However, we do still hope to go to referendum during 2017.

If you would like more information please contact Richard Freeman on **01296 660894** or **rfreeman712@btinternet.com**.

Richard Freeman, Chair
Ivinghoe Parish Neighbourhood
Development Plan Steering Group

New Village Planters

Ivinghoe Parish Council is really pleased to be able say that our new planters that border the Lawn in Ivinghoe are now planted up and ready to enjoy!

We hope to be able to install some more of these planters around the boundary of the Lawn and very much hope that residents and visitors alike are able to appreciate our floral displays.



Enjoy Home cooked food at the

Waterside Café

**Pitstone Wharf, Cheddington Road, Pitstone,
Bucks LU7 9AD**

Breakfasts, Lunches, Soup, Sandwiches, Toasties
Homemade Cakes, Cream Teas plus a selection of
Hot & Cold Drinks

OPENING TIMES

FRIDAY SATURDAY AND SUNDAY -10am to 2.30pm.

BANK HOLIDAYS 10am to 3pm

On request for group bookings we can offer seating for 36 people.

Email: café@pitstonewharf.co.uk www.pitstonewharf.co.uk

Rainbows: Monday 4.30 – 5.30 p.m. Pitstone Memorial Hall
Guider Elaine Thorogood 01296 661540

Brownies: Monday 5.45 – 7.15 p.m. Pitstone Memorial Hall
Guider Elaine Thorogood 01296 661540

Guides: Tuesday 7.00 – 8.30 p.m. Millennium Room, Pitstone Memorial Hall
Guider Yvonne Ashton 01296 660044

To join us, please visit our website at Girlguiding.org.uk



Hub News...

Hello, I am Carol Tarrant chairing the Hub Trustees (management group) after five long years of saving and then running for 3 years the Community Hub spaces.

Reviewing the past year September 2015 – 2016 we installed our new PA system, into our large two classroom space. This system has been used for public talks... some of them on traffic calming parking matters searching for a future solution, also public meetings facing up to Gladman developers and other such unplanned challenges, public music concerts, choir practice and choral concerts, and a great taster for further Saturday night Jazz evenings – plans are afoot for spilling out onto the new paved back courtyard!



Jazz Evening in early April

October 2015 Hallowe'en saw gentle nods to use of our pumpkins and some face-painting witchery in the café, **October 31st 2016 the Café team is hosting a Halloween Arts and Crafts presence 10.00am – 3.00pm, and a proper dress-up Halloween romp here** in the form of an open party 4.00 – 5.30pm.



November 2015 saw the third appearance of a **Winter Christmassy Market, repeated again this year on 25th November 2016** marking the beginning of sparkly festivities and mid-winter fun for our Community – Market stalls of hand crafted Christmas presents inside and out, little lights everywhere, Decorated Christmas Trees, mulled wine, mince pies, Christmas Carol Singers, maybe Bell Ringers and roasted Chestnuts for sure! We run a Raffle, Tombola, some children's 'eye-spy' Christmassy games – sometimes a special Christmassy person visits us here. We made around £600 at the last Christmas Market.

Dec 2015 We launched the subject of **Time Credit thank-you remuneration** by saving up 'credits' from volunteering time to use elsewhere for free swimming, theatre or museum visits in London and other towns, and free computer time here. Volunteers are always needed when communities try to pull together a venue like this with activities for different generations where help for others younger or older especially is crucial to facilitate their movement around the space, etc. It was thought that some pleasant swap of their volunteered time might be very acceptable to us all. **Pancake races on the Lawn on February's Shrove Tuesday** are an example of

the Hub using the Lawn for community activity – where fun, tradition, sport and yummy pancakes all intermingle with the trustees providing free prizes and direction – combining our Hub space on the Lawn and CuriosiTEA Rooms cooking skills! At the end of February we had a special general meeting to consider the constitution to make a small change to enable our current **Registered Charity Status. Hurrah!**

Last March we just managed to squeeze our scaled down Easter Market, Easter Egg Hunt, raffle, Tombola and inside Craft stalls – £300 fund-raiser, into the back courtyard – before the full scale effects of pulling up the tarmac and laying new brick pavers hit the Hubs everyday existence. Tree roots and ancient plumbing produced problems but solutions were always forthcoming and the café was able to stay open as usual, and activities filled the Hub as normal. Our side gate was again attempted to be stolen, after it had been re-fixed by the paving workmen – we still have it, but it is yet to be securely fixed in position. We are left with a very beautiful paving job finished to a very nice design level where an alternative ramping design has paid off -we all enjoy the gentle undulations for travel up down – drainage is similarly landscaped!

At the end of this building work our own trustee's landlord Bucks County sent their annual deputation of inspecting personnel for a day's visit to scrutinise our activities, plans, refurbishments and finances. As with the two previous inspections, they were very pleased – satisfied by the way we have delivered our Community Wellbeing remit to this community and its visitors! Two more

benches were purchased by Hub trustee savings, the five new planters were filled with plants which we enjoy but share with the voracious Cabbage white butterflies eggs, caterpillars and black beetles!

During June / July Bob was liaising with Abi Parveen of Bucks County on her desire that we host the **'Simply Walks' activity** on Monday mornings, setting off from our Hub for a half hour or slightly longer walk in a circular direction coming back to the Hub for coffee if required and a chat! We particularly welcome such an activity because, this new group is ideal for those in our community, like myself, who have some painful limbs with special requirements and slow pacing. Also some community members in the first stages of mental confusion and ideally suited to walking in a well-recognised environment with other community members who look after their welfare and delivery safe home – leaving the group size to expand gradually will give all users time to remain feeling confident and safe.

At the end of July, we hosted the second annual **Old School Re-Union** which proved very enjoyable. We should mention here a **Heritage Book** centred on this Schools History, contributed to by ex-pupils here – organised by Sylvia Simmonds and her team of Margaret Holliday and Bob Corn... which is coming together well – containing much Ivinghoe historical interest, and when published will be a must to purchase!

In order to help meet the Lawn litter problem co-operatively, we ordered in some green bins which we attached to our gates for the community to just use at will, if not taking their own litter ►

home, and we went off to find terra-cotta flower pots to act as ashtrays in order to eliminate cigarette-butts littering our new pavers – alas one was stolen within the first week!

The latest HUB project was the erection of a motorised **big new Film Screen** high over one of the window gables in the 'hall' space which is the last piece of equipment we needed in place in order to deliver an activity each week for the over 50's. **Movers & Shakers – a three part 3 hour activity planned to soon be happening in the Hub on a Friday from 11am-2pm!** The first hour consists of health promoting gentle movement to music on our feet or from a chair; then comes a Luncheon Club for an hour in the same space sharing a big table and prepared, cooked and served by Hayley our CuriosiTEA Rooms community café tenant; and whilst we digest that lovely meal we can have the last of the three hours playing table top games or cards together, listening to a speaker or watching a chosen favourite film together – using our brand new screen. All we now lack is the activity leaders. Someone new to lead the exercise sessions (Zumba Gold cannot come to us on a Friday), a social hour leader and a supervisory leader for this overall activity. Any ideas? That solved, then look out for an advertisement for 'Movers & Shakers' this autumn helping each other through another winter together!

Every year the trustee's role evolves further, able and generous trustees join for a while, firstly saving the building, then applying for grants to restore it, and now running it with all the administrative obligations, financial dealings and the

careful growing of the facilities to keep pace with the community's expressed needs, each new introduction's sustainably into the future... particularly conscious of providing a community centre style venue for all the diverse members of our wider community, with all that takes.

We thank all those generous trustees – and particularly Alex Owen who after three years of hard working good advice is hanging up her trustee hat this year, but staying a favourite hubberlovin' friend!

We welcome Gail Dodsworth, Claire Bamber and Anne Eastwood who are stepping up into that breach!

Hub trustees are: Carol Tarrant: Chair, Bob Corn: Secretary, Richard Wade: Treasurer, Karen Groom, John Wallis, Sylvia Simmonds, Margaret Holiday, Gail Dodsworth, Claire Bamber and Anne Eastwood.

Look out for

A Shopping and Pampering Evening Event poster, Friday 11th November 6-10pm in the Hub and Town Hall.

The start of Time Credits for volunteering remuneration.

Movers and Shakers posters – moving feet, eat and treat new activity!

Hub Christmas Sparkly Market Friday Nov 25th 6-10pm posters – please come!

Our Facebook page is a good source of related info at Ivinghoe Old School Hub
Our Hub website is: www.ivinghoeoldschool.com; Our email is: ivinghoeoldschool@btconnect.com; Our HUB direct phone number is: **01296-661666**; CuriosiTEA Rooms **01296-663853**.

Carol Tarrant

Community space for hire - of great Victorian character, recently refurbished by our Community for this Community's use.

Old School Community Hub , Ivinghoe

www.ivinghoeoldschool.com 01296- 661666

Email : ivinghoeoldschool@btconnect.com

Ivinghoe Community Hub on Facebook



Venue run with financial transparency by our 'not for private profit' local voluntary trustees for Community benefit and increased Community wellbeing.

Space is at ground level for easy access, is warm, and with restored Victorian varnished floorboards, and new comfy modern padded stackable chairs, fold away tables and ambient new lighting - can swiftly adapt to all activities for all generations.

£9 for first hour in 37.65 sq.m room with piano or 31.61 sq.m room with sink and **£7** per hour thereafter.

69.26 sq.m room with retractable screen midway. **£12** for first hour and **£10** thereafter per hour.

Contact us or come in for a booking form and our support for your plan.

CuriosiTEA Rooms is our pivotally important permanent tenant within our building and serves home-made affordable refreshments and hot meals seven days a week. Special arrangements for space hirers who do not wish to self-cater for their own events can be arranged with Hayley Wesley on – 07775-831153 Facebook Curiosity Rooms

IT Suite

Software includes Microsoft Office 2013 Suite; Photoshop C6; Skype with webcam and microphone;

£2 per PC....one with 40" wall mounted monitor and speakers.

10p A4 b/w photocopy

50p A4 colour scan and print

50p A4 lamination

Booking whole space for small conference or meetings etc. £10 an hour.

Personal tuition starting soon!

RikkIAbout

Village Hall

The Committee continues to work hard to secure the future of the hall, and a decorating session has been held. On 18th November there will be a repeat of the successful quiz night with fish and chips. When I say “repeat”, I guess the questions will be different!

Grow your own

IA's allotments are a great resource and there are currently some vacant plots, 4 metres by 10 metres, available for a subscription of just £20 per year. Running water is available. The plots are independent and run under a far more liberal regime than many. Provided what is done doesn't conflict with other users or neighbours, it should be okay. Even chickens are allowed – but no noisy cockerels! If you are interested in taking on a plot, please contact Neil Ashby on **07985 715613**.

Arriving in droves

One of my fellow Ashridge volunteers, John, has been researching the life and times of the Welsh cattle drovers, who came to England in large numbers over the centuries to supply the Abbeys, the Barons and the Crown, and to trade at fayres and markets. They created settlements called Little London as long ago as the Middle Ages. They planted Scots pine trees as way-mark signs and named places like Piccadilly Hill near Ivinghoe Beacon. Their cattle, being shod with metal shoes, created the hollow-ways around the Beacon so beloved by the rare Duke of Burgundy butterfly. National archives show that in 1731 there was a “cottage and lands at Ivinghoe Aston, part of an

orchard belonging to a cottage called Little London....”. Is there a so-called cottage in IA today, which would enable John to locate the original Little London site? I don't recall seeing one. I would be grateful for any information that I can pass to John.

Time marches on

Lofty is now sixty and a third. His birthday party (see last issue) was, indeed, quite an occasion! As you can see from the photo, the man himself is having a whale of a time. Can anybody supply a caption?



Nobody expects the IA inquisition!

Gerry vs Gerry

Usually when conducting these interviews I ask several questions, but IA resident and Bomber Command rear gunner Gerry Norwood (aka Maddie's Dad) was off before I'd opened my mouth!

GN: At the start of the war, I wanted to be part of the action and volunteered for the Army, Navy and Airforce but, because

I had a reserved occupation, all refused me. I was told that I might get in if I took the Airforce exams, which I passed. I was sworn in to the RAF Volunteer Reserves that day and given the King's Shilling. I then promptly got flu, which turned into pneumonia. I was laid up for three weeks and thus failed my pilot course. I re-mustered, became a rear gunner and was a sergeant within six weeks. I joined an Australian crew as part of 460 RAAF Squadron, based at Binbrook in Lincolnshire. On the way back from a sortie to Magdeburg, my Lancaster ran out of fuel because of an un-forecast headwind. The four engines cut out and we crash-landed five miles from base. Two were killed, five survived. My parachute pack protected me and I woke up looking at the sky with only broken ribs and a badly bitten tongue. After that, the wireless operator and me stayed with the squadron as spares and I flew with four or five different crews. All in all I flew 30 ops.

RH: Now in his mid-nineties, Gerry tells of his war time adventures in a crystal clear and matter-of-fact way. I remembered reading that the Lancasters had no heating at the back and the rear gunners wore electrically heated suits. “They did”, said



Gerry, “but there was almost always a wire broken, leading to one foot or arm burning and the other freezing!” Gerry flew on D-Day, bombing a field battery, and has vivid memories looking down from his rear turret on the mass of boats and explosions below. For this he received, in 2003, a certificate from the French, but never a medal from Britain. He feels that the exploits of Bomber Command have not been properly recognised, but is pleased that the memorial at Green Park has been built at that work is underway on the memorial spire (the exact height of a Lanc's wingspan) in Lincoln, home of the International Bomber Command Centre. Gerry still helps to raise money for the Centre by attending functions and signing books and pictures.

I doubt that any of us who have not experienced such things can begin to imagine what Gerry and his mates went through and just how courageous and selfless they were. Gerry and Margaret wish to thank everyone who supported the application for their annexe to be built. Well, Gerry, I think that's the least we can do”!

Rikki Harrington

Brampton, Ivinghoe Aston **01525 220625**; harrington.rikki@gmail.com.

Ivinghoe Flower and Vegetable Show 2016

The organisers of the reconvened Ivinghoe Flower and Produce Show had been quietly confident that the show would be well attended but they hadn't expected the show to be quite so popular and with entries of such high quality.

Sue Jones, the current President of the Pitstone & Ivinghoe WI, decided last year that it was time to give the once incredibly popular produce and craft show another go. So she put together a small committee of local people to help with getting the show back on its feet.

The team set about contacting previous trophy winner, finding judges and putting together a list of entry categories. Hopeful that people would be enthused to enter their prize winning vegetables or delicious cakes, the organisers were overwhelmed by the warm and positive response the show has received, with entrants coming from as far as Tring!

The judges, a professional and experienced bunch, were particularly enthusiastic about the show, with the Vegetable Judge commenting, "What a really good show, I'm very impressed with the standards of the exhibits!"

Of the 50 entrants into the show, 49 entrants scored points across the classes, a 98% hit rate! All the competitors who won cups, were thrilled to have done so well, and both the

oldest and the youngest competitors at the show walked away with a cup. Emilia Frearson, a new resident to the village, who won the Children's Cup 6 and under, won with a beautiful artwork of 'A Sunny Garden'.

The atmosphere at the show was fun with a friendly competitive edge and once the judging was over and the winners announced and prizes presented, the fun continued with an auction of produce and crafts MC's by local Allotmenteer, Ernie Jones.

Sue Jones, said, "I'd like to thank all of the entrants for making such an effort with their entries and the judges who did such a wonderful job of judging all of the magnificent entries. I'd also like to thank the team who helped me to get the show back off the ground and Ivinghoe Parish Council for their support and last minute help from The Hub! Finally, my thanks to the WI for making and serving tea and cakes for all the visitors to the show. We are really looking forward to the Ivinghoe Flower & Vegetable Show 2017 – so please watch this space for details of classes and dates for next year!"

So, if you are a green fingered gardener, a Bake Off fan or a creative crafter, please look out for details of next year's show and get entering!

Christabel Boersma

Ivinghoe Flower & Vegetable Show 2016 Cup Winners

Childrens Cup - Most Points	Bella Boersma
Childrens Cup 6 and under	Emilia Frearson
Childrens Cup 7 - 12	Holly and Phoebe Cusick
Vegetable Cup	Ernie Jones
Onion Cup	Keith Haynes
Flower Cup	Stella Heley
Flower Arrangement Cup	Sue Jones
Cookery Cup	Julie Haynes
Craft Cup	Hazel Travis



Ivinghoe Clean Up Gang

Ivinghoe once a year volunteer Clean Up Gang – An idea some of us are chewing over as a means to help keep our village weeds and junk at a minimum, using our own spades to clean up the gutters and pavements near our houses and then come together to sort the more public areas. If enough of us are inspired by this idea, then a date will be set for springtime 2017. Do you prefer a weekend...say a Saturday morning clean-up, or a weekday? This could become an annual village coming together with maybe a bonfire of the detritus, or a barbeque at the end of the

work session. ARE YOU IN? Let us know via **Karen Groom** (Parish Council) or **Carol Tarrant** / Corn (HUB).

Look out for a date and a plan.



Hub trustees join Parish Council to clear the top Lawn blackberries Oct 2016.



St Mary's Pitstone

Pitstone Church Committee are holding a **Memory Christmas Tree event on 10th and 11th December in Pitstone Church**. We are hoping that those with memories of the church will come and decorate a Christmas tree with their memories. Warming drinks will be available. **We look forward to seeing you.**

Have you ever thought about 'growing your own'? Growing your own fruit and vegetables can be a very satisfying experience and in Ivinghoe we are very lucky to have some beautiful allotments just off Church Road, overlooking St Mary's Church. If you are an Ivinghoe resident and would like some more information about availability of plots – we have them in a range of sizes – please contact the Parish Clerk at ivinghoeparishclerk@gmail.com

NB: there may not always be an available plot but we do keep a waiting list!



Scout Christmas Post



ON SALE

Saturday 12th November
at



St Mary's Christmas Market



The Scout Christmas Post is back for 2016

This Christmas why not support your local Scouts and save yourself some time posting Christmas cards around the villages by using the Scout Christmas post instead?

You can buy our special Scout stamps, at 15p each, from St Mary's Christmas Market on Saturday 12th November and then at various local venues from 25th November onwards. Stick them on your cards and post them in one of our many special post boxes dotted around the villages.

We will ensure that all cards posted by the 'last post' (5pm on Friday 16th December) will be delivered across the weekend of 17th and 18th December 2016.

Look out for our posters, check our facebook page (1st Ivinghoe & Pitstone Scout Group) and Village web sites in mid November for more information.

Ivinghoe Town Hall... News!

We had a busy and varied activity schedule through the Summer.

In addition to our regular weekly events a few of more 'rare' activities were held, E.g. Ivinghoe 's Lace Making Group 'Dinner', Icknield Choir rehearsals, Ivinghoe Flower and Vegetable Show (which was a huge success), a WI Quiz Night with another one being held in October and a WI Lunch in November! A number of Childrens parties through the Summer including a Christening Party too.

And to keep them fit our local Morris Men/People 'New Moon' are keeping warm in Autumn & hotter in Winter!

We continue to enjoy the support of a lot of activities (some ad-hoc) eg, Children's Parties and other events in addition to our regulars. (Ballet, Zumba, Morris (Moon) Dancing, Pilates, Chilters Art Group, WI and various other Music rehearsals, etc.

Ivinghoe Town Hall regular events:

Christmas and New Year coming means good reasons for making a Booking for your friends and Family!

Also, have a look at the regular Weekly events held at the Ivinghoe Town Hall.

Why not try one of these regular weekly events

Monday: 4pm-8pm – Ballet

Lisa (07834 281434)

Tuesday: 10am – 12pm – Beacon Art

Marion (01296 661291)

Tuesday: 7pm – 8pm – Zumba

Caroline (07941 092673)

Tuesday: 8.15pm–10.00pm – New

Moon Morris Charles Thorogood (01296-661540)

Wednesday: 8.45am and 10am Pilates

Andrea (07855 138005)

Thursday: 7.30pm – 10.00pm

W.I. each 2nd Monthly Thursday Win (01296 660755).

NOTE: We have 'slot availability', on Monday AM's, also Tuesday and Wednesday PM's, Thursday AM/PM's and all day on Friday's!

Also, please try the web site at www.ivinghoetownhall.org.uk where you can see regular activities and search for Hall availability dates, or if you prefer to enquire in person then call Stephen Swinbank (The Booking Secretary) on **01296 660344**. Or via email: spswinbank@gmail.com

The Post Office and Shop direct Telephone Number is: **01296 660582**.

Stephen Swinbank, Secretary



Historic user-friendly Hall with awards for Best Used and Managed Small Hall in the County. Sited in the centre of the Village, the Town Hall provides modern facilities for local groups, parties and fundraising activities.

IVINGHOE TOWN HALL

www.ivinghoetownhall.org

Planning a party or meeting?

Facilities include:

- Music options including a quality electronic piano
- Stage with specialised lighting, curtains & dressing room
- Kitchen with microwave, oven, hob, fridge, comprehensive crockery and glassware
- Chair lift/wheelchair for those with mobility problems.

If you would like further information, contact **Stephen Swinbank** on **01296 660680** or spswinbank@gmail.com

PITSTONE MEMORIAL HALL & MILLENNIUM EXTENSION

The large Millennium Extension consists of a generous room with a capacity for 70–80 people and a smaller room with a capacity for 50 people



Bar facilities are available by arrangement with the booking clerk

For further details and revised prices please contact the Booking Clerk, Mrs Sue Gregory, 4 The Crescent, Pitstone. 01296 661609

Ivinghoe and Pitstone W.I.

This year so far has been very busy but enjoyable. We have three new members and now have a waiting list. So, if you are interested in being added to the waiting list please give me a ring.

Our Quiz Night was again a sell-out and a great success. Thank you to all the committee, Zoe Hill for the food and help on the evening, Geoff for printing the tickets and Lesley and Betty for organising the raffle.

The Ivinghoe Flower and Vegetable show was a great success with four of our ladies winning cups! We also provided cakes and tea, so thank you to all who helped on the day.

All is going well regarding our planning for our 100th celebrations next year. Some of our members are busy organising an evening of music and food as part of their £5 challenge. They are holding a Supper Cabaret Evening with The Boodlum Band on Saturday 19th December 2016 in the Pitstone Memorial Hall (7pm for 7.30pm start). The cost of a ticket is £15.00 and this includes a hot supper and dessert. Tables of eight and please call **01296 668072** for tickets.

Also, coming up on Sunday 6th November 2016 is an Autumn Lunch (like the Valentine Lunch). Doors open at 12.30pm and tickets can be purchased in advance from the Windmill Pharmacy or from Sue on **01296 660436**. Tickets cost £11.00 and includes a hot meal, dessert and a tea/coffee, tables of eight.

Our W.I. was well supported at our Beacon Group Meeting in September



where Lawrence Trowbridge, Head Ranger at Ashridge, gave a very interesting talk on proposed changes to Ashridge over the next five years.

Our speaker for our September Meeting was Geoff Lambert who gave a fascinating talk on Medical Detector Dog's. They are able to detect certain diabetic conditions. 'Bess' was very alert to sweets in Louise's pocket! They take 18 weeks to train and cost £11,000 per dog, but a lifeline to many.

Please ring Sue Jones on **01296 660436** if you have any queries.

We hope to see you soon!

Sue Jones, President

Royal British Legion Commemoration Lunch September 18th 2016

Our Annual lunch was held in Pitstone hall and the **amazing sum of £1,355.00** was raised towards the Poppy appeal. 80 guests attended and our special thanks go to all those who generously contributed salads, puddings, raffle prizes and help in making this such an enjoyable and successful event.

Remembrance Time

Next month we will start to sell the poppies, finishing on November 13th with a service in St.Mary's Ivinghoe.

So look out for the collectors and please be generous so that we can help to-day's Service men and women, veterans and their families.



BeaconLit 2017



The date has been set for next year's BeaconLit festival of books and writing, which will take place in Brookmead School, Ivinghoe on Saturday July 8.

Festival Committee member and local author Dave Sivers said, "BeaconLit 2017 will be our fifth festival. The event was conceived to support Beacon Villages Community Library, which relies on volunteers and donations to carry on serving local communities, and also to help raise local awareness of books and writing.

"The festival is a great day out for readers and writers alike and always offers

something for everyone. The committee is putting together an exciting programme for 2017 which will allow our audience to hear from a wide range of authors and writers, ask them questions and buy books from our bookseller partner. There will also be refreshments, and we are planning some workshop events too."

To keep up with the festival news, visit **www.beaconlit.co.uk** and sign up for the e-mailing list.

Contact: **Dave Sivers** on **0797 486 4592** or email **davesivers@hotmail.co.uk**

Professional Cleaning Services



Which?
Trusted trader



- ✓ Carpet & Upholstery
- ✓ Contract Cleaning
- ✓ Communal Areas
- ✓ Patio & Driveway
- ✓ Interior Windows

Call today for a free, without obligation quotation
01442 250679 / 07952 544666
www.murrayscleaningservices.co.uk

NCCA
NATIONAL CARPET CLEANERS ASSOCIATION
CLEANING THE NATION'S CARPETS AND UPHOLSTERY
MEMBER NUMBER 1765

ESTABLISHED IN 2002

Murray's Cleaning Services, 19 Broom Hill, HP1 2JD
H&M BROWN TRADING AS MURRAY'S CLEANING SVS

Find us on Facebook

- The 50plus -

- Plumbing
- Electrical
- Handyman



- From small works..
- To larger projects
- Free estimates
- Friendly advice
- NICEIC & Gas Safe personnel
- Free 50plus HomeCare Club for discount always and great offers


0845 22 50 495

By the 50plus for people of all ages
Calling from a mobile? Use 01494 784 448

www.the50plus.co.uk

F.R. JEFFERY & SON

Coal Merchant



Coal & Smokeless Fuel
Logs & Compost

Also spare parts for solid fuel appliances

Delivered to your door at low prices

Contact Us
on **01296 661258**

Beacon Community Choir

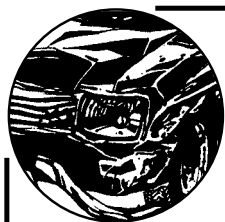
Present

A VICTORIAN MUSIC HALL
Song, dance and comedy performed by local stars of the stage and concert hall

Featuring

The Slapton Players
in a never been seen before melodrama
with
A magic lantern show throughout the evening
Accompanied by
The Beacon Chamber Ensemble
Directed by: Judith Sheridan
Master of Ceremonies: Mr R Cooper

Tickets £12.50 to include a pie supper
Licensed bar with local ales, wines and soft drinks
Saturday 10th & Sunday 11th December at 7.00pm
Cheddington Village Hall
Tickets available from: lhewlett@btinternet.com
Tel: 01296 660670
Victorian Dress encouraged but not obligatory



M. D. SPRING AUTOS

Martin D Spring
28 years established trading



For all your vehicle's needs
Servicing, Class 4 and 7 MOTs on site, Exhausts,
Welding, Tyres and Brakes

Your vehicle can be picked up and returned free of charge

Call now for a competitive quote

Telephone & fax: 01296 662280

Mobile: 07860 847328

Unit 9, Airfield Ind Est, Cheddington Lane
Long Marston, Tring, Herts HP23 4QR



Ivinghoe Aston Village Hall



Villagers are reminded that there is a hall at Ivinghoe Aston for hire at similar rates to Ivinghoe's Village Centre and Town Hall. For details contact booking secretary Barbara Rayment 01525 220959 or email jackyparsons@yahoo.in



GROOMS FARM SHOP

FRESH MEAT & POULTRY
FREE RANGE EGGS & VEGETABLES
CHEESE, OLIVES, PIES, PATÉS & NUTS
FREE LOCAL DELIVERY

OPENING TIMES

Thursday 9.00 - 12.30

Friday 8.30 - 5.30

Saturday 8.30 - 12.30

Orders can be placed outside
these times by telephone

WILLOWDENE FARM

IVINGHOE

TEL: 01296 668326



W Roff Agricultural Services

- Hay & straw for sale
- Paddock maintenance
- Fencing



07909 680807

ELSAGE FARM, CHEDDINGTON

LEARN TO RIDE

AT

ROCKLANE RIDING CENTRE

GROUP & PRIVATE LESSONS
FOR ADULTS & CHILDREN (from 4 years)



QUALIFIED INSTRUCTION (from £11 for children)

ORCHARD FARM, IIVINGHOE ASTON

TEL: 01525 222402

Fully Licensed and Insured
Enquiries welcome



Small Paws At Home

Pet Sitting Service – Looking after all your pets needs whilst you are away. Small pets cared for in their own home, allowing them to relax in their own environment.

Other duties include; bins taken out, curtains/blinds opened & closed and post secured.

Call Elaine on

01296 668863 / 07837 292403

Email: smallpawsathome@icloud.com

Web: www.smallpawsathome.co.uk

WINDMILL PHARMACY

Come and visit our lovely fresh pharmacy in
Ivinghoe!!

A friendly efficient service with a smile



19-21 HIGH STREET, IVINGHOE, LU7 9EP
TEL: 01296 706 280

OPENING HOURS:
MON – FRI 8.30am – 6pm (CLOSED 1-2pm)
SATURDAY 9am – 12-midday



New Venue
Ivinghoe Aston

Doodle Caboodle offers a dedicated weekend party venue for up to 25 children aged six and below. Set in a rural and idyllic location with dedicated parking for you and your guests. It is easily accessible from Dunstable, Berkhamsted, Tring, Wendover, Leighton Buzzard and all the villages in between. *

Dedicated and 'exclusive' party venue
Flexible party packages available
Eye catching inflatables and soft play
Clean and modern facilities

T: 07806 792936 E: info@doodlecaboodle.co.uk
www.doodlecaboodle.co.uk or scan the QR code



*We are fully insured up to £5m, we have been CRB checked and are members of the British Inflatables Hire Alliance - raising the standards of safety.

United Benefice of Ivinghoe with
Pitstone, Slapton & Marsworth



Senior Citizens Christmas Lunch

Friday 9th December 2016

Pitstone Memorial Hall- 12.00 noon

Free event includes

Drinks on arrival

3 Course Christmas Lunch

Raffle

Visits by Santa &

Brookmead School Choir

To reserve a place please telephone:

Richard Cooper - (01296) 661725

Norma Leighton - (01296) 661093

Wendy Mann - (01525) 221202

Closing date for bookings - Friday 25th November 2016.

Phone early to avoid disappointment.

Transport available if required – just let us know.



Make a Will

AND LASTING POWERS OF ATTORNEY

YOU DECIDE, who is to run your affairs, who gets what, guardians etc, not the State.

MINIMISE RISK of Inheritance Tax and the disinheritance of children.

Best Price Guarantee
from specialist Solicitors and professional Will Writers since 1999

For a **DAYTIME** or **EVENING** appointment call
01525 220644
www.wisechoicewills.co.uk

Protect Your Home 100%

from
CARE FEES
 and
PROBATE COSTS



Will Trusts & Probate Practice
A wise choice

FREE HOME VISIT

MAKING A WILL HAS NEVER BEEN EASIER




- Flexible, weekly fully furnished lets
- Ideal for people working in the area, on holiday or needing a stop gap between houses

Whatever your situation, we can offer fully equipped self catering accommodation




Town Farm • Ivinghoe
 Leighton Buzzard
 Beds. LU7 9EL
 T: 01296 668 455
info@letsunlimited.com
www.letsunlimited.com

TOWN FARM



Town Farm • Ivinghoe • Leighton Buzzard • Beds LU7 9EL

A new campsite right at your doorstep!



T: 07906 265435
www.townfarmcamping.co.uk

The Village Health Centre
 Yardley Avenue, Pitstone LU7 9BE
www.pitstonesurgery.co.uk

Dr J R Bell, Dr Tisha Patel
Dr Stephanie Johnston, Dr Kirsten Riemer, Dr Heather Counsell


Opening hours 9.00am-12.00pm 2.00pm-6.00pm (Fri 2-5pm)
 The Village Health Centre serves Pitstone, Ivinghoe and surrounding villages.

Friendly, modern and spacious dispensing village Practice offering a wide range of health services including coils/implants, minor surgery, travel advice, in house blood tests, on-line appointments and repeat prescription ordering. Four nurse Practitioners offering acute clinics with same day appointments. Also, midwife, health visitors in attendance. Local District Nurse Service. Long established training Practice with a rotation of qualified doctors.

Large car park

New patients are welcome. Please contact our reception staff or visit our website for more information.

Telephone 01525 223211 **www.pitstonesurgery.co.uk**



**BELLOWS MILL
EATON BRAY**

Attractive short term and overnight accommodation in idyllic surroundings of old water mill. Licensed for civil wedding ceremonies and receptions for up to 80 guests. Small meeting room.

*For details phone 01525 220548
 or email reservations@bellowsmill.co.uk*



25 / 48 / 51 / 53 / 57 / 71
Seat high quality vehicles

For all your travel arrangements
 Local and long distance
 UK & Continental

Tel: 01296 661604



2010 Brochure now available - please call for your free copy
 email: info@masonsminicoachhire.co.uk
www.masonsminicoachhire.co.uk

A light shining in the darkness

Amongst all the Christmas lights that cheer up our windows and houses at this time of year you might spot in some homes a menorah. A menorah is a candelabra with nine branches. It will be lit in Jewish homes to mark the festival of Hanukkah which this year runs from Christmas Eve until 1st January.

The eight nights of Hanukkah are the Jewish 'Festival of Lights'. Over 2000 years ago a tyrant called Antiochus attempted to crush Judaism by outlawing religious practices and imposing Greek beliefs and religion which at that time were the dominant culture. Hanukkah celebrates the seizing back of the temple in Jerusalem by a small band of resistance fighters. Only sufficient oil for one night was found but miraculously it lasted for eight nights until fresh supplies arrived.

At the beginning of the Christmas Gospel we hear that St John wrote about Jesus 'The light shines in the darkness and the darkness did not overcome it'

As Christians prepare to celebrate, the light of our Jewish friends and neighbours reminds us that our faith need not be overwhelmed by our prevailing culture that turns Christmas into a seemingly endless round of spending and over-indulgence. We too celebrate the light that continues to shine, that has not been overcome by the darkness.



Christmas Services at St Mary the Virgin, Ivinghoe

Sunday 27th November 6pm
Advent Hymns and Carols

Sunday 18th December 6pm
Nine Lessons and Carols

Saturday 24th December 3pm
Crib Service
11:30pm – Midnight Mass

Sunday 25th December 10am
Family Communion

Revd Adrian Manning Vicar of Ivinghoe,
Pitstone, Slapton and Marsworth

Saturday 3rd December 2-4pm
St. Mary's Church Ivinghoe



Crafts, Cake and Carols for Christmas



This event is free of charge but under 7's
must be accompanied by an adult

To book a place please contact Sandra
Green on 01296 668648



Ivinghoe & Pitstone Chapel Fellowship

We are a small and friendly group of local Christians who meet to worship God in a fairly informal way, in song, in prayer and with messages brought by a variety of local preachers.

We meet on Sunday mornings at 10.30 in the Millennium Room at Pitstone Memorial Hall for services that last about an hour, followed by social chat over a cup of tea or coffee.

***All are welcome
why not come and join us?***

***Want more information?
01296 668005***

P. DYER ELECTRICAL

For all your Electrical & Testing & Inspection needs

- Re-wires
- Testing & Inspection
- Security Systems/Lighting
- LED & Low Energy Lighting
- Decorative Lighting
- PAT Testing
- Fuse Boards
- Fault Finding/Repairs

Fully insured, Part P registered, all work guaranteed.
Fast, friendly, reliable, local electrician. For a free,
no-obligation estimate, call Paul on:



**Tel: 01525 222109
Mobile: 07850 682815**



Tring Market Auctions

Independent Fine Art & Chattel Auctioneers and Valuers. Est 1832

**Auctioneers & Valuers of Fine Art,
Antique Furniture & Collectables**

Fortnightly General Sales of General Furnishings & Effects

Antique Furniture & Fine Art Sales

Total & Part House Clearance Specialists

If you can't find it here you won't find it anywhere!

Buying or Selling, contact us on 01442 826446

The Market Premises, Brook Street, Tring, Herts HP23 5EF

Website: www.tringmarketauctions.co.uk

Email: sales@tringmarketauctions.co.uk

Your Local Bowls Club are Champions

Having been runners up in the League and knocked out Chalfont St Peters and Burnham on the way to the final, Cheddington Bowls Club's men had a convincing win over Amersham, 85 – 62, in the Buckinghamshire Plate Final.

Captain Dave Finch received the trophy and the championship flag from the BBA president Chris Cole, after the two teams and their supporters had enjoyed a few drinks and a celebration lunch.

This was the first time Cheddington Bowls Club had reached the final, so the win is something special. The team was drawn from bowlers from Linslade, Leighton Buzzard, Tring, Dunstable as well as from the villages around Cheddington.

If you want to **Give Bowls A Go**, contact Tony on **01525 220644** the club is not just a summer season club, for the club has an all year round calendar.

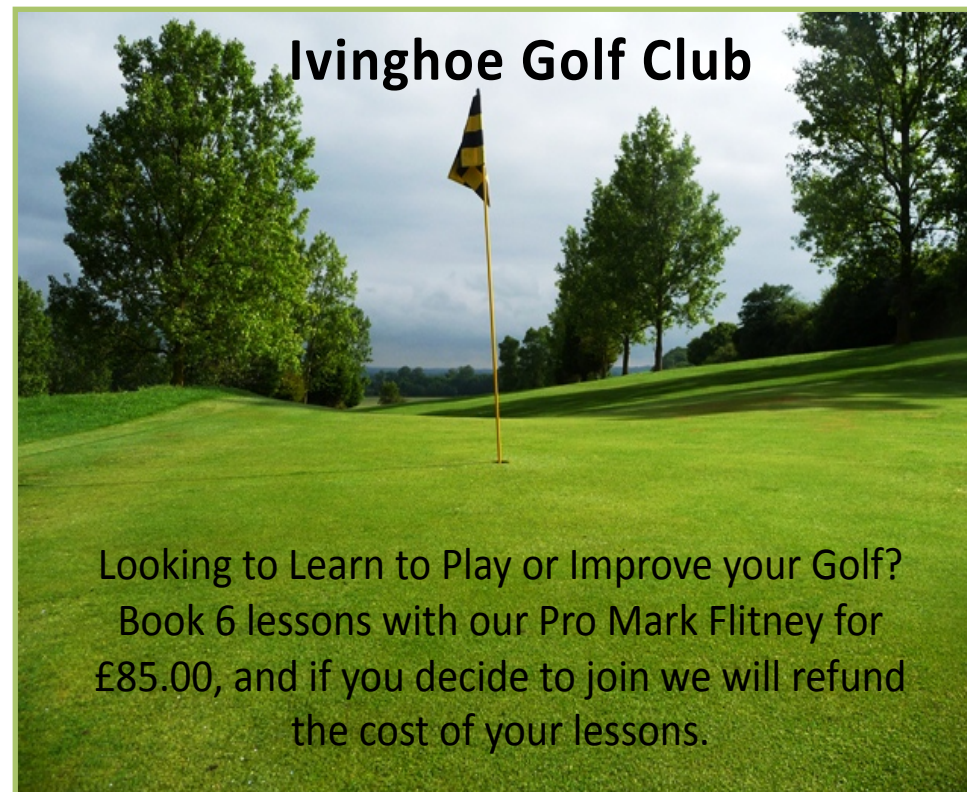
Tony Duke



GIRLS FOOTBALL SCHOOL YEARS 5, 6 AND 7

Pitstone & Ivinghoe JFC are running sessions for any girls who would like to play football this season. If you are interested in playing in a friendly environment please contact **Matthew** at **chairman@pandifootball.net**

All our coaches hold FA qualifications and our sessions are designed to be fun and enjoyable. **We welcome all abilities so why not give it a try!**



Looking to Learn to Play or Improve your Golf?
Book 6 lessons with our Pro Mark Flitney for
£85.00, and if you decide to join we will refund
the cost of your lessons.

- Various Adult Membership schemes available starting from less than £8.00 per week.
- Junior Membership £99.00 or only £20.00 with a Parent holding 7 day Membership.
- Turn up and play Green Fees from £10.00 for 9 holes.

Discount Golf Shop with the largest selection of equipment in the area



For further details contact:
Pro Shop: Tel: 01296 668696
Clubhouse: Tel: 01296 668696
E-mail: info@ivinghoegolfclub.co.uk
www.ivinghoegolfclub.co.uk

Looking for a local Venue for a Party?



Our Clubhouse is available for private hire for birthdays and celebrations.

Ivinghoe Golf Club, Wellcroft, Ivinghoe, Nr. Leighton Buzzard, Beds, LU7 9EF

Leighton Plumbing & Heating



Oil boiler servicing, repairs and installations.

All other aspects of plumbing & Heating undertaken.

11 Woodman close
Leighton Buzzard
Beds.
LU7 3nu

Please see our reviews and pricing on the boiler juice / myboilerservice website.

01525 385250 / 07774567472

Oftec registered & Insured Leighton-plumbing@ntlworld.com

Plumb it all

**Professional Plumbing and Heating Engineer
Gas Safe Registered**

**Full Central Heating Systems
Gas & Oil Boiler Servicing
Bathroom Installations
Small Jobs happily undertaken**

**Ring Richard on:
01296 709961 or 07720 265645
email: rick@plumbitall.eu**

2016 New Year's Eve Dinner Dance

at

Bellows Mill
Eaton Bray
LU6 1QZ

Tickets: £55 (profits to charity)
8.00pm for 8.30pm until 1am
Bring your own drinks. Pay Bar
Glass of Champagne at midnight.

Ragtime and Bluegrass
with Keith on Banjo
8pm

Three course dinner and
cheeseboard
8.30pm

Louise on vocals.
Website: www.alivenetwork.com

Dancing
10pm to 1.00am

For tickets email: rachael@bellowsmill.co.uk, or Tel: **01525 220548**
stating any food allergies or vegetarian if required.

Dress to impress/Black Tie

www.bellowsmill.co.uk

Adults only

Ivinghoe Allotments

Tales from the Plot



First of all, the Ivinghoe Flower and Vegetable Show resurrected this year after a four year absence and with great success, according to the judges and villagers who attended. Altogether there were 50 entrants exhibiting a total of 170 items. It was really great to see new exhibitors and the cakes on display proved that watching Mary Berry is not a waste of time! One judge remarked "You have an awful lot of talented people in Ivinghoe." Thanks to the committee and also the people, not just from Ivinghoe, who attended.

It goes to show what a small group of people, committed, with a no-nonsense approach can achieve. Well done! Please also see Christabel Boersma's article on the show. All of this makes the outlook for next year's show very promising.

Unfortunately, due to family reasons, Doug and Daphne have given up their plot and will both be missed. Allotment sites can ill afford to lose people like them. They were always prepared to share their knowledge, plants and also a good laugh. We wish them well and hope they will visit the allotment.

We have new ploholders on their old plot in the form of the Ivinghoe Community Allotment. The aim of the funded organisation is to help and reduce the number of inactive people across the county through the love of gardening. If anyone in Ivinghoe feels like a good bit of fresh air and get their hands dirty then the allotment site is the place to be. Just turn up on a Thursday between

10am and noon and speak with one of the ladies who will be in attendance and away you go! Fancy being allowed to get your hands dirty for nothing! I hope the project gets off to a good start.

Well, how has the growing season been for all us allotment holders? Hopefully above expectations. This year was the first time I planted my potatoes under black plastic – this technique proved better than I expected. The weather was ideal for growing potatoes and the yields were higher and tubers larger. Of course, the best part was no weeds in between and no earthing up. Butternut squash good, courgette plants came to an end quickly. I noticed that most plots had a successful sowing of onions. I sadly will not have any peas for the freezer this year, what I collected would have possibly filled an egg cup!

I read a very interesting article recently where TV gardening programmes are blamed for the rise in eviction's of allotment holders. This is due to the fact that they made looking after plots 'too easy'. Apparently people get depressed when they see all the weeds and just abandon their plots.

Local authorities are clamping down on neglected plots, with a motto 'Use them or lose them'. To give you an example, one London borough council issued 378 notices to quit, almost a third of its 1300+ plots. Also with a view to cutting down the waiting lists for plots, and where a site cannot/will not be developed anymore tenants with a full

plot will on renewal only be offered a half plot which seems fair so that more people can get a chance to grow their own. It is something we all have to think about.

On a brighter note, now the evenings are drawing in, possible frost on the ground, just think you could be sitting in front of your fire reading the Thompson and Morgan or Sutton's seed catalogues in readiness for next year!

Mind how you go.

Ernie Jones Ivinghoe Allotmentee



IVINGHOE TURF

Suppliers of

- Turf
- Topsoil
- Fertiliser
- Bark
- Grass Seed

www.ivinghoeturf.co.uk
01296 661939
sales@ivinghoeturf.com

RGC

Agricultural & Horticultural Engineers

Mursley, Milton Keynes, Bucks MK17 0SA

Tel: (01296) 720066

sales@rgcengineers.co.uk
www.rgcengineers.co.uk

Sales, Service & Repairs

Garden Tractors
 Chainsaws • Strimmers
 All Garden & Ground
 Care Equipment
 Compact Tractors, Quads etc.

Service & Repairs to most leading makes of machine.

Christmas Trees fresh from the Farm

***Top quality Christmas trees
direct from the grower***

***We are situated on the B4506 between
Ringshall and Dagnall.
Look out for the Giant Father Xmas***

£2 off any tree with this advert

Telephone 01442 842299



**G.I. Rogers
&
SON**

R.M.L

Tree services



- **Tree Felling & Shaping**
 - **Hedge Cutting**
 - **Stump Grinding**
 - **Site Clearance**
 - **Logs**

**City &
Guilds
NPTC**

**FULLY
INSURED**

**Licenced
Waste
Carrier**

Contact Robert on:

Daytime: **07585 007109**

Evening: **01296 661508**

email: rmlservices@outlook.com

Windmill Pre-School



Welcome to a brand new academic year here at Windmill Pre-School. We are really pleased to be welcoming back lots of familiar returning children and their families and also opening the doors to many new faces. We've got some great activities planned for the children plus some great fundraising opportunities for you to get involved with.

Fundraising

Fundraising is an important role for the Voluntary Management Committee as it allows us to invest in additional new equipment and fund some fun sessions run by outside organisations that other settings may otherwise have to ask parents to pay for. Last year was a busy year and we are very pleased to be able to provide an update on what was organised and raised:

- Windmill was one of Waitrose in Berkhamsted's chosen charities of the month and as a result we received a very welcome cheque for £301. Thank you to everyone that shopped at Waitrose and popped the green tokens in to our charity box.
- In October and May, we held two family photo sessions with Photography by Carrie. This has, and continues to be a very popular activity and we have raised over £100 from sales and fee sessions this year. Carrie has just returned to the setting for our regular autumn session.
- We held three Textile Recycling initiatives. The total of unwanted textiles converted in to over £120. This

is a great achievement so thank you to everyone that donated unwanted items. Our next collection is November.

- Our Annual Sponsored Walk back in April brought in a record amount of £900. We were completely bowled over by the generosity of everyone that took part and supported our pre-schoolers as we walked around the villages and the National Trust Windmill.
- Our amazing Nativity event and festive visit from Santa, which was supported by the Committee by providing refreshments and a raffle raised over £200. Another great achievement by everyone involved.
- As always, you can help us raise funds for free when you shop online with Easyfundraising. It is a great way to raise money for Windmill Pre-School and doesn't cost you a penny! Shop online from over 2,700 retailers using the website www.easyfundraising.org.uk and they'll give a donation to us every time you buy something at no extra cost to you or the pre-school. This year, we have received a cheque for £24 and with Christmas now fast approaching, and inevitably lots of things to buy, you really could help make a difference.

With the additional funds raised through Committee fundraising, we are pleased to have been able to purchase additional resources for the children to benefit from. Last year, this included a sandpit, a bridge for the outside space and storage sheds. We were also able to redecorate the

interior of the building as well as replace the flooring in the main room.

We have also been able to fund additional activities on a regular basis. These are things that other settings would usually charge parents for, but we have been lucky enough to be able to cover the additional external costs. These activities have included Michaela's Music For this new academic year, we have organised a few little fundraisers to kick off the first term. We hope that parents and carers will support us throughout the year.

In November, we will be having our first Textile Recycling session which is a great opportunity to have a big clear out of clothes, bags and shoes that are then weighed and turned in to cash for Pre-School. The collection will take place on Friday 11th November, and full details will follow in due course.

On Friday 16th December we will be holding our annual Christmas Nativity at Pitstone Memorial Hall in the morning, followed by some Christmas fun and a visit from Father Christmas. Parents and carers will also have the opportunity to order the children's own festive Christmas cards ready for delivery in early December and also enter our festive raffle to win some fabulous prizes.

On Saturday 11th February we will be holding a Valentines Disco at Pitstone Memorial Hall. This will be open to everyone in the community. There will be fun and games, refreshments and dancing so please save the date and join us for some family fun. Watch this space for more information.

Outside play areas

Following an agreement made last year with Miss Douglas, Head at Brookmead School, we continue to make use of their playing fields every morning between 9.15am and 10.15am – weather permitting.

Transitions for next year's leavers

For all children leaving Pre-School next year in July 2017 to go to Brookmead or an alternative school in September, we will be continuing to run the successful Transitions Programme where we introduce a number of focused activities starting after Half Term and these run throughout the year to help prepare them for the next level in their educational journey.

Coffee mornings

Back by popular demand are our regular Coffee Mornings. The objective of these sessions is to provide a forum for parents to meet on an informal basis as there is not much opportunity at drop off and pick up. The feedback has been very positive from previous sessions and everyone seemed to find it beneficial to meet other pre-school parents. Our next session will take place on Friday 30th September straight after morning drop-off at The Children's Centre. We also have held a session in October already and then further sessions will be Friday 9th November and Wednesday 7th December. ▶

Parent partnership

Do you have an interesting job? Do you wear a well-known uniform to work? Or maybe you have an interesting hobby? We would love to hear from anyone that could come in and talk to the children about their job or hobby.

Also, could any parents spare a couple of hours to come and help out at Pre-School – either on a regular basis or just as a one off? Would you like to come and help out with some baking, messy play or gardening? Or maybe do some singing or reading with the children? We would love to hear from dads as well, so please do get in touch and speak to Kate.

Waiting List

We are so pleased that our setting continues to be a popular choice. And as we are so popular, it's never too early to get your child's name down on the waiting list. For more information, please contact **Claire** our Administrator at admin@windmillpreschool.co.uk

Thank you for your support.

The Team

Windmill Pre-School

Ivinghoe & Pitstone's Windmill Pre-School

Windmill Pre-School in Ivinghoe is one of the top pre-schools nationally and highest rated locally

"Children make excellent progress in all areas of their learning and development because staff plan an outstanding range of activities..."

"Children have fun and are purposefully engaged in all areas of this dynamic setting. They make excellent progress as staff recognise them as unique individuals..."

Source: Ofsted report June 2011

Morning session: 9am-12pm
Afternoon session: 12pm-3pm (includes Lunch Club)
Lunch Club: 12pm-1pm (subject to availability)

We welcome all children between 2 and 5 years from Pitstone, Ivinghoe & surrounding areas to our purpose-built premises behind Brookmead School five full days per week


IT'S NEVER TOO EARLY TO REGISTER YOUR CHILD

For further info and to arrange a visit for you and your child please contact us: admin@windmillpreschool.co.uk or 01296 661031 (during sessions)

www.windmillpreschool.co.uk

Registered Charity No. 1032380





Brookmead School

Headteacher: Katherine Douglas

Bringing Learning to Life and Life to Learning

Our school is located in the beautiful Chiltern hills, which is something to be celebrated and shared. Established in 1967, Brookmead School provides a happy and stimulating environment that promotes an enjoyment and love of learning. We aim to enable all our children to reach their full potential, both as learners and as valuable members of our school and wider community.

Brookmead School is a Foundation Primary School for children aged 4 - 11 and serves the communities of Ivinghoe, Pitstone (including Castlemead) and Marsworth.

For further information or to arrange a visit please contact Mrs Kerr on 01296 668543 or email office@brookmead.bucks.sch.uk.

Brookmead School, High Street, Ivinghoe, LU7 9EX

www.brookmead.bucks.sch.uk

Marsworth Pre School



Marsworth Millennium Hall, Vicarage Road, Marsworth HP23 4LR
 Tel: 07506 179658 Email: enquiries@marsworthpreschool.org.uk

Marsworth Pre-School, held at Marsworth Millennium Hall, is a very popular village pre-school with an outstanding reputation, attracting children from a wide area.

Sessions available for ages 2 to 5 years, **FULL** or **PART** days:-

Monday, Wednesday, Thursday & Friday
 Morning Session:- 9.00am - 11.30am
 Lunch Club:- 11.30am - 12.30pm
 Afternoon Session:- 12.30pm - 3.00pm

For further information, details of funding, session availability or to arrange a visit, please call 07506 179658 or visit our website www.marsworthpreschool.org.uk



Volunteer and help bring a smile to someone's face...

...our volunteer befrienders do this every day

Living with dementia can be isolating. Alzheimer's Society volunteer befrienders make a difference. Find out more about volunteering with us by having a chat with Laura or Lisa on 01296 331722 or emailing bucksbefriending@alzheimers.org.uk

We'd love to hear from you.

Alzheimers.org.uk

Alzheimer's Society operates in England, Wales and Northern Ireland.
Registered charity number 296645.



NHS
Aylesbury Vale
Clinical Commissioning Group



NEW MEMORY SUPPORT SERVICE IN BUCKINGHAMSHIRE

If you are concerned about your memory, the earlier you seek help the better as there may be support or treatment available that can help you.

There are many different things that can cause memory problems but sometimes it can be an early sign of dementia.

This new service helps you to take control of your situation by offering a single point of contact for:

- Advice and support through memory screening and diagnosis
- A listening ear and practical support afterwards

Get in touch today to find out more.

01296 331749

memorysupport@alzheimers.org.uk

DON'T THINK YOU HAVE MOVES?

So, you're not a dancer. We only have one thing to say to that -

WHO CARES!

Just come to a class and move!

DANCEMIXX • INTERVAL • STRIKE • FUSION • STRENGTH • CORE

Cheddington Village Hall Monday 7pm Tuesday 9.45am Pitstone Memorial Hall Wednesday 7.30pm	Wilstone Village Hall Mon & Wed 9.30am Tue 6pm Low Impact Thu (Lo) & Fri 9.45am Sat 9.30am	Goldfield Infants School Tring Tue & Thu 7.30pm Nora Grace Hall, Tring Wed 11.30am Lite class
--	---	--

Keri Donnellan - 07900 987230 Email: jazzercise1@hotmail.co.uk
www.facebook.com/jazzerciseBucksBedsHerts

The King's Head, Ivinghoe 01296 668388

Birthdays ?
Anniversaries ?
Getting married ?
Just getting together



Don't forget our
Bon Appetit Luncheon Menu
(Mon—Sat) @ £21.95
Perfect for ladies who lunch!

The King's Head is YOUR village's fine dining restaurant.

Celebrate in style and let us make your special occasion one to remember!

The King's Head
"Welcome Card"

15% discount Monday to Thursday evenings and many more benefits.
Call 01296 668388 to claim yours



www.kingsheadivinghoe.co.uk





**Support with
Confidence**
BUCKINGHAMSHIRE COUNTY COUNCIL

Under a new national system known as Self Directed Support you can choose the kind of help you receive and who you get it from. Your support will be more flexible and responsive and you can use different services in your local area to help you live as independently as possible for as long as possible. Even if you are funding your own care, flexibility and choice is vital to getting the services that you need and trust.

Support With Confidence provides a list of businesses and individuals who have been successfully approved having undergone the appropriate training and background checks, including:

- ✓ Financial & trading history
- ✓ Enhanced DBS check for criminal record
- ✓ Qualifications, training & experience
- ✓ References
- ✓ Interview
- ✓ Compliance with legal requirements
- ✓ Agree to Code of Conduct and Terms & Conditions of the scheme.

Who can join Support With Confidence?

- Independent Support Planners and Brokers
- Self-Employed Personal Assistant
- Home or Domiciliary care
- Meal preparation / shopping
- Mobile hairdresser
- Dog walking / pet sitting
- Complimentary therapies
- Cleaning / housework
- Wheelchair friendly transport
- Legal services
- Daytime activity operators
- Any other care & support in the community

Contact: chwalton@bucksc.gov.uk or 01296 382298 or www.bucksc.gov.uk (search 'Support With Confidence').

The Blindman

Curtain and Blind Specialists

Curtains . Poles . Tie Backs . Cushions

Roller . Pleated . Woodslat

Woven . Vertical . Venetian

**Huge choice of fabric
or supply your own**

Free friendly advice and quotation in the comfort
of your own home

01442 822 055 & 07767 783 955

www.theblindman.uk.com

Panache interiors

- Soft furnishings for your whole home or simply one room
- Supplying bespoke curtains, blinds, loose covers, cushions, tracks & poles and lots more
- Complete service including design, fabric samples, measuring, making up and fitting

Sandra Ford

T: 01296 660868

E: sandra@panache-interiors.com

www.panache-interiors.com

James B Chadburn FBHI Fine Antique clocks & Barometers

Specialist in repairs & restorations.

Valuations & clock finding service.

Advice & assistance on formation & disposal of private clock collections.

Quality clocks/barometers Bought & sold.



Telephone 01525 221165

Mobile 07790 000629

E-mail: info@jameschadburn.com

FIRST THURSDAY FRIENDS

Friendly chat, board games for those who wish and a choice of cake with endless tea or coffee at just £2.

ALL WELCOME

On the first Thursday of each month at 2p.m. in the Millennium Room at Pitstone Memorial Hall

We plan to reintroduce film shows on alternate months as soon as possible.

**Want more information?
01296 668005**

Pitstone & Ivinghoe Museum Society Programme 2016/17

All meetings are held in the Meeting Room in the Pitstone Green Museum at 8pm and visitors are very welcome. Entry for members is £2 and for non members £3.

Thursday 24th November '16 *** AGM *** A Triumph of Form over Function

This talk by Dennis Trebble will trace the evolution of motorcycle design over the course of the Twentieth Century, whilst at the same time introducing the idea that the socio/economic impact of this type of transport has been far-reaching and has reflected more than just a narrow range of users. From military machines, through "bread and butter go-to-work" machines right through the Rock'n'Roll era up to modern times – a real thermometer of society!!

Please note the AGM start time will be 7.30pm, followed by the talk.

Thursday 15th December '16 *** Christmas with Films from the Archives

Frank Banfield will be returning once again with his amazing film archive. He has a vast collection of 16mm cine films, and will choose a selection, mainly of local interest, dating from the 1930s to the 1970s. These films will be interspersed by our usual mince pies and mulled wine.

Thursday 26th January '17 *** Cordite, Castrol R and the 2012 Olympics

Our speaker, David Butler was just 11 when an horrendous accident changed his life and future prospects dramatically. He went on to head a 750million dollar division of an International Company. He forced rule changes for the disabled in motor racing both nationally and internationally. David was awarded an MBE in the 2010 New Year's Honours List for years of service to disability sport and was also an Olympic torch bearer and took part in the Paralympic Opening Ceremony.

Thursday 23rd February '17 *** Infantry Training at Halton in World War One

Francis Hanford, who works at the Trenchard Museum at RAF Halton, will be talking about the training of Kitchener's volunteers on Alfred's Estate.

We look forward to seeing you soon!

Sue Lipscomb
Programme Secretary



Pitstone & Ivinghoe Entertainments Present

The Annual Fireworks and Bonfire Event
On Saturday 5th November
At The Football Pavilion, Marsworth Road, Pitstone

Gates open at 6pm
Bonfire at 6.45pm
Fireworks at 7.15pm

Ticket prices:

£5 per adult or unaccompanied child / £15 family of 4 / Under 5's are free
Advance tickets available from Masons, CuriousiTea and The Rose & Crown

Town Farm

ART SHOW

Perfectly timed for that special Christmas gift!

Paintings, Illustration
Ceramics, Woodcraft, Woodcarving
Jewellery, Egyptian quilts
Willow weaving, Sculpture

www.townfarmartshow.blogspot.com

Mulled wine, mince pies & Christmas cake
in aid of Rennie Grove Hospice Care

ONE WEEKEND ONLY

Friday 25 - Sunday 27 November
10am - 4pm

6 Town Farm, Cheddington, Nr Tring, LU7 0TT
PLEASE PARK ON HIGH STREET - NOT IN TOWN FARM

Free entry

The Battle of the Somme Remembered at St Mary's

On Friday July 1st just before 07.30hrs a group of 12 Royal British Legion members and supporters, gathered by the War Memorial at St Mary's Church. Led by the Legion Standard Bearer, Bob Saintey, the group stood in the quiet of a July morning with the birds singing in the trees around them. At exactly 0730hrs, they blew whistles signifying the moment 100 years ago that the same whistle signal was given for thousands of men to prepare to go 'over the top' – and this began the Battle of the Somme, a battle that was to last for 5 months.

After reading the Exhortation, Owen Wynne gave a short address during which he talked about how the British and French forces fought the Germans in a brutal battle of attrition on a 15 mile

front and also of the appalling losses suffered on both sides. In particular of course, those men from our villages who gave their lives were remembered. Alex Wynne then read a WW1 poem. Following the lowering of the Standard, all stood in reflective silence for two minutes until the raising of the Standard signified the end of the Remembrance.

This thoughtful and moving commemoration of the centenary of the first day of this terrible battle, which remains the bloodiest in the British Army's history, was a meaningful remembrance of that dreadful day – and indeed of the 140 days that were to follow. Thank you to all those who took part and helped us to remember those who gave their lives in the Battle of the Somme.

THE BEACON ART GROUP

Invite you to a

Charity Coffee Morning

supporting

RENNIE GROVE HOSPICE CARE

at

Ivinghoe Town Hall

on **Tuesday 15 November 2016**

10a.m. till mid-day

Please come

Chat about the selected pictures on show



ART, NATURE AND MINCE PIES - WHAT MORE COULD YOU WANT!!

COLLEGE LAKE ARTISTS

An Exciting Group of Artists and Makers
www.collegelakeartists.weebly.com
College Lake Nature Reserve,
Tring, HP23 5QG

Photography, Jewellery, Ceramics
 Watercolours, Glass, Willow Weaving,
 Textiles and Acrylics

Thursday 1st December to
Sunday 4th December
10am - 4pm
A Great Christmas Gift Event



ALL YOUR CHRISTMAS SHOPPING IN ONCE PLACE!!

College Lake Artists - Nine wonderful artists and makers are holding a four-day Christmas Fair from Thursday 1st to Sunday 4th December.

Nine artists and makers will be exhibiting their new work, perfect for Christmas presents or treats for yourself. Jenny's ever-popular glass includes some beautiful Christmas decorations, Shirley and Kerry have wonderful new textiles and jewellery, and Linda, Catherine, Niki paintings and Louisa's photography will enhance any wall! Nigel's beautiful ceramic tableware is perfect for Christmas, and Hazel's beautiful willow weaving makes perfect decorations. Combine beautiful artwork with a lovely wintery walk around College Lake Nature Reserve, then treat yourself to tea and mince pies in the cafe - and you'll be able to go home from a wonderful outing laden with presents and your Christmas shopping complete!!

Councillor News from Avril Davies

Spurred on to achieve 10000 steps a day I've taken every chance over the summer to enjoy long walks in the Ivinghoe Hills, Ashridge Forest and on the Grand Union Canal.

A regular Active Bucks walk from the Ivinghoe old school started in late August to motivate more people to get the benefits of exercise with companionship and encouragement. At the moment these are on Mondays at 10am from The Hub. More walks are planned as more leaders have come forward. Thank you.

Recently with the Local Area Technician I reviewed progress on the repair and maintenance programme for our local roads in preparation of putting forward priorities for the next financial year.

I'm continuing to campaign for a weight limit on the B488 in response to a scheme of weight limits in neighbouring Hertfordshire and Bedfordshire confining heavy lorries to the M1, A4146 Leighton Buzzard bypass, and the A505 after the completion of the M1 link north of Dunstable. Vehicles using the B488 at the bridge will be counted in October (not in half term) as the first stage necessary to impose a weight limit. After I met with the deputy cabinet member for transportation the urgent necessity of county wide weight limits and strategic HGV routes has been given higher priority and will feature at the next Transport for Bucks in-house conference.

The provision of sufficient primary school places locally is now concern to many, given the number of new homes proposed



Avril Davies
County and District Councillor
<http://avrildavies.mycouncillor.org>

in the Vale of Aylesbury Local Plan. I have had several meetings Bucks County Council planners and school place planners to make them aware that schools are full in this area, that Buckinghamshire has said to the Pitstone NDP that it has no plans to increase their capacity, to see what can be done.

There may also be changes to entitlement to free school travel for secondary school pupils next year, 2017, depending on the outcome of this summer's consultation. The proposals did not look easy to understand for this area, and all options for free travel would involve applying to out of county schools including those in Bedfordshire, as in many places they are the nearest schools. No decision has been made yet.

Can I remind parents of older pupils in the sixth form already paying heavy transport fares, that Arriva offer a termly pass at a lot less than the County Council, which can be used on any bus on the route. The bus timetable has to be carefully studied before buying one of these. Currently in term time the 61 leaves Ivinghoe around 07.15am and returns from Aylesbury at 15.55, although obviously there are later and earlier buses.

The outcome of the WCML rail franchise consultation has been published with only a small concession to station access and parking issues. Bucks County Council have had an apology for not being acknowledged as a contributor. I have also had some high level meetings at Bucks about the West Coast Main Line, to stress its importance to the economy, and how access to stations, and capacity in the trains, and limits to capacity on the line affect us. Recently axed Southern trains between Milton Keynes and East Croydon have now been restored to 5 a day.

Luton Airport will also be proposing changes to its aerospace this Autumn.

The Parliamentary Boundary Commission has proposed that the whole Ivinghoe Division, that is Ivinghoe ward and Pitstone and Cheddington wards, are moved out of the Buckingham Constituency and in to the Aylesbury Constituency.

And as if all that change wasn't enough, BCC have submitted a proposal to the government for a single council for the county, with considerable revenue savings year on year. They expect a decision by December. The Districts are also putting forward their set of proposals, which is likely to suggest two or even three councils.

Avril Davies
County Councillor, Ivinghoe Division.

Pitstone Community Car Scheme

Servicing Healthcare Appointments

DESTINATION	Cost £.p
AMERSHAM	8.50
CHESHAM	6.50
CHURCHILL (OXFORD)	17.50
HIGH WYCOMBE	14.00
LUTON & DUNSTABLE	7.00
NUFFIELD (OXFORD)	17.50
RADCLIFFE (OXFORD)	17.50
STOKE MANDEVILLE	7.00
TRING	3.00

Volunteer drivers always needed

PHONE: Klaus Ginda 01296 668911

From District Councillors Sandra Jenkins and Derek Town

Important issues shaping the future of Aylesbury Vale in the coming months

Unitary Councils

Currently there are three levels of local government; Parish Councils, District Councils and County Councils. The 'Modernisation' of local government is to reduce this to two, leaving the Parish Councils with slightly increased responsibilities and creating a new organisation(s) in place of District and County. This is to be a Unitary Council where the functions undertaken by two organisations are done by one. Unitary councils already exist, the nearest one to us is Milton Keynes which geographically is in Bucks but is independent of Bucks County Council.

Bucks District Councils' report on modernising local government has been published. Aylesbury Vale, Chiltern, South Bucks and Wycombe District Councils commissioned a firm of consultants, Deloitte, to undertake an open and independent review to find the best option for the future of local government to serve the population of Buckinghamshire. The report has no pre-determined outcome and is looking at all possible options. It focuses on finding how best to strengthen local decision making, improve and protect the future of local services, save taxpayers' money and keep our customers at the centre of everything we do.

Engagement with stakeholders is the next step and to take this forward the four district leaders have asked to



meet with the Leader of Bucks County Council, Councillor Martin Tett. Councillor Neil Blake, Leader of Aylesbury Vale District Council said, "We welcome this report as a vital addition to the debate we need to have. Fundamental to good local government is delivering quality and consistent services to a diverse population, and it is the responsibility of all local councils and their elected members to do this as efficiently as possible."

Councillor Isobel Darby, Leader of Chiltern District Council said, "We live in rapidly changing times, local government is expected to do more with diminishing funds. By 2019/20 government funding will be gone, and local authorities will have to be financially self-sufficient. Across the four Buckinghamshire districts we are well placed because we recognised the need for change years ago and adapted swiftly, embarking on a radical review of the way we work."

Councillor Ralph Bagge, Leader of South Bucks District Council said, "Change is

not about slashing budgets and reducing services. It's about doing things differently, maintaining services and quality of life. So, any changes need to be introduced through a measured, considered and collaborative approach. We need solutions which will withstand the test of time and provide a solid foundation for future challenges, such as our ageing population."

Councillor Katrina Wood, Leader of Wycombe District Council, "The four district councils commissioned the report from Deloitte to look at long-term solutions. We have approached this with no pre-set agenda, remaining open-minded about what the recommendations may be. What's important is doing the right thing for our residents. We agree that the local government system which has served us well for many years may need an overhaul. We are up for that challenge, and are taking a broad view of the wider opportunities for change."

Vale of Aylesbury Plan

Consultation on the draft Vale of Aylesbury Vale Local Plan, (VALP) closed after over eight weeks of exhibitions, special briefings and handling countless web, email and telephone queries. Almost 1,600 people have submitted responses to the consultation – more than double the previous VALP issues and Options consultation last year. Over 500 emails were received in the last three days of the consultation period, meaning the last week was spent inputting very large numbers of comments before officers are able to start analysis. Planning officers are finalising supporting evidence and will be analysing the responses gathered. The local plan team will then start drafting the final version of the new plan. Meanwhile, discussions with neighbouring authorities

on their unmet housing need are continuing, with further coordinated work on infrastructure. Thereafter, the final plan will be considered by councillors at Scrutiny and Cabinet meetings in December. Subject to approval by councillors at council on 16 January 2017, a statutory six week public consultation period will take place. Anyone who has taken part in any consultation throughout the local plan development, and left their contact details, will automatically be notified when this takes place. During this period, any comments and representations made on AVDC final plan will be submitted alongside the final local plan to the Government planning inspector. AVDC Cabinet member Cllr Carole Paternoster said. "I like to thank everyone who has taken the time to get involved in this process by submitting their comments on our draft local plan will be submitted alongside the final local plan to the Government planning inspector. I found it very interesting listening to residents views at our VALP stand at Bucks County Show, where we had almost 400 visitors. The views of local people are invaluable to us in drafting the final plan, which we must submit to the Government planning inspector in March 2017."

It is going to be a busy time and we will keep residents up to date as much as possible.

In the meantime we wish you all a Very Merry Christmas and a successful New Year.

Derek Town – 01296 661637
dtown@aylesburyvaledc.gov.uk

Sandra Jenkins – 01296 668587
sjenkins@aylesburyvaledc.gov.uk

District Councillors for Pitstone and Cheddington Ward



the haldi restaurant

**Wednesday Night
is Taster Night!!**

WHY NOT TRY SOMETHING DIFFERENT?



MIXED STARTERS
CHEF'S SELECTION:
LAMB
CHICKEN
KUFTA
MIXED VEGETABLES
RICE
NAAN
COFFEE

£12.95*
per
person
*Based on minimum of 2 people

80 Marsworth Road, Pitstone, Buckinghamshire LU7 9AS

Telephone **01296 662204 / 661223**

www.thehaldipitstone.co.uk www.facebook.com/thehaldirestaurant

Open 7 days a week including Bank Holidays

Sun-Thurs Noon-2.00pm • 5.30-10.30pm

Fri & Sat Noon-2.00pm • 5.30-11.00pm

Your local Councillors:

Cllr Karen Groom

Areas of Responsibility: Allotments, Beacon Magazine, Beacon Villages Library, Conservation Area, Footpaths and Bridleways, Parish Maintenance, Ivinghoe Aston Village Hall, Lawn Hire, Lawn and Trees, National Trust/Chiltern Soc., Planning
Add: Willowdene Farm, Ivinghoe, LU7 9EA
Tel: **01296 668326**
Email: karengroom@hotmail.co.uk



Anna Stone

Areas of Responsibility: Education, Footpaths and Bridleways, Town Hall Committee, Grants and Fundraising
Add: Willowdene Farm, Ivinghoe, LU7 9EA
Tel: **01296 668326**
Email: annastone92@hotmail.co.uk



Pat Roach

Areas of Responsibility: Health, Community Impact Bucks Liaison, General Parish Maintenance, Lawn and Trees, Local Area Forum
Add: Church View, Church Road, Ivinghoe LU7 9EU
Tel: **01296 668482**
Email: adrian.roach@ic24.net



Mrs Bridget Knight

Clerk to Ivinghoe Parish Council
Add: Parish Office, 38 Rushendon Furlong, Pitstone, Buckinghamshire LU7 9QX
Tel: **07960 605393**
Email: ivinghoeaparishclerk@gmail.com



Ruth Benton

Areas of Responsibility: Health, Community Impact Bucks Liaison, Councillor Training, Education, IPC Website and Social Media (inc Facebook and Twitter), Planning Sub-Committee, Police Liaison, Streets, Street Lights and Highways (including Traffic Calming)
Add: Ty Cyngor, 10 High Street, Ivinghoe Aston, LU7 9DP
Tel: **01525 222730**
Email: TyCyngor@gmail.com



Avril Davies

County and District Cllr (Ivinghoe Division)
Add: The Old Bakehouse, Chequers Lane, Pitstone, Buckinghamshire LU7 9AG
Tel: **01296 668152**
Email: acdavies@buckscc.gov.uk



Cllr Sandra Jenkins

Tel: **01296 668587**
Email: sjenkins@aylesburyvaldc.gov.uk



Andrew Dicker

Areas of Responsibility: Allotments, Finance
Add: The Old House, 38 Station Road, Ivinghoe, LU7 9EB.
Tel: **01296 668444**
Email: andrew.dicker31@gmail.com



Chris Poll

District Cllr Edlesborough Ward
Add: 43 Gooseacre, Cheddington LU7 0SR
Tel: **01296 663 737**
Email: cpoll@aylesburyvaldc.gov.uk



Stephen Lott

Areas of Responsibility: Beacon Villages Library, Footpaths and Bridleways, Ivinghoe Aston Village Hall, Lawn Hire, Local Area Forum, Playgrounds (Ivinghoe and Ivinghoe Aston), Police Liaison, Town Hall Committee
Add: 2 Yew Tree Close, Ivinghoe, LU7 9ET.
Tel: **01296 668897**
Email: sjl@linley-lott.me



Cllr Derek J Town

Tel: **01296 661637**
Email: dvtown@aylesburyvaldc.gov.uk



St Mary's Church

Christmas Market

Sat 12th November

Pitstone Memorial Hall

11am - 3pm



Crafts

Face
Painting

Wine
Raffle

Tombola

Baskets

Jewellery

Hamper
Raffle

Lunches

Santa's Grotto